

LEA Name : Souderton Area SD  
Address : 760 Lower Road  
Souderton , PA 18964

County : Montgomery  
AUN Number : 123467103  
LEA Type : SD

**Annual Financial Report  
Accuracy Certification Statement**

For Fiscal Year Ending

**6/30/2019**

Pennsylvania Department of Education

&

Office of Comptroller Operations

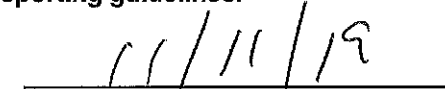
PDE-2056: Intermediate Unit

PDE-2057: School District, AVTS/CTC, Charter School,  
and Special Program Jointure

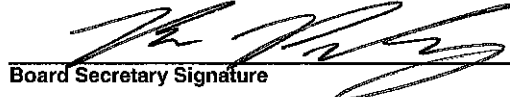
**CERTIFICATION: By signing this page I agree that the electronic data submitted is a complete and accurate statement of the financial operations and status of the local education agency for the fiscal year. It has been prepared in accordance with generally accepted accounting principles and established Commonwealth of PA reporting guidelines.**



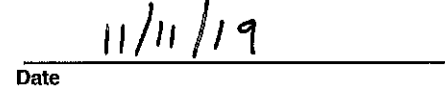
Chief School Administrator Signature



Date



Board Secretary Signature



Date

Brian Pawling

Contact Person

bpawling@soudertonsd.org

Contact Person E-mail Address

(215)723-6061

Ext :

Contact Person Telephone Number

(215)723-8897

Contact Person Fax Number

# Audit Certification

## Annual Financial Report:

For Fiscal Year Ending 6/30/2019

(Pursuant to PA School Code Section 218(b))

LEA Name : Souderton Area SD

AUN Number : 123467103

County : Montgomery

Audit Certification Due:  
12/31/2019

This certification is applicable to the Annual Financial Report data submitted  
through the Consolidated Financial Reporting System on: 12/17/19  
Date

### Auditing Firm:

Gorman & ASSOC.  
1825 Franklin St.  
Northampton, PA 18067

Contact: BO TRAVIS  
Phone: 610-262-1280  
email: btravis@gaapc.com

CERTIFICATION: By signing this page I agree that the financial statements of the school have been properly audited as noted above pursuant to Article XXIV, and in the auditor's professional opinion, the Annual Financial Report (PDE-2057) submitted on the date referenced is materially consistent with the audited financial statements.

Chief School Administrator

[Signature]  
Signature

12/18/19  
Date

Board Secretary

[Signature]  
Signature

12/18/19  
Date

Brian Pawling

Contact Person

bpawling@soudertonsd.org

Contact Person E-mail Address

(215)723-6061

Ext :

Contact Person Telephone Number

(215)723-8897

Contact Person Fax Number

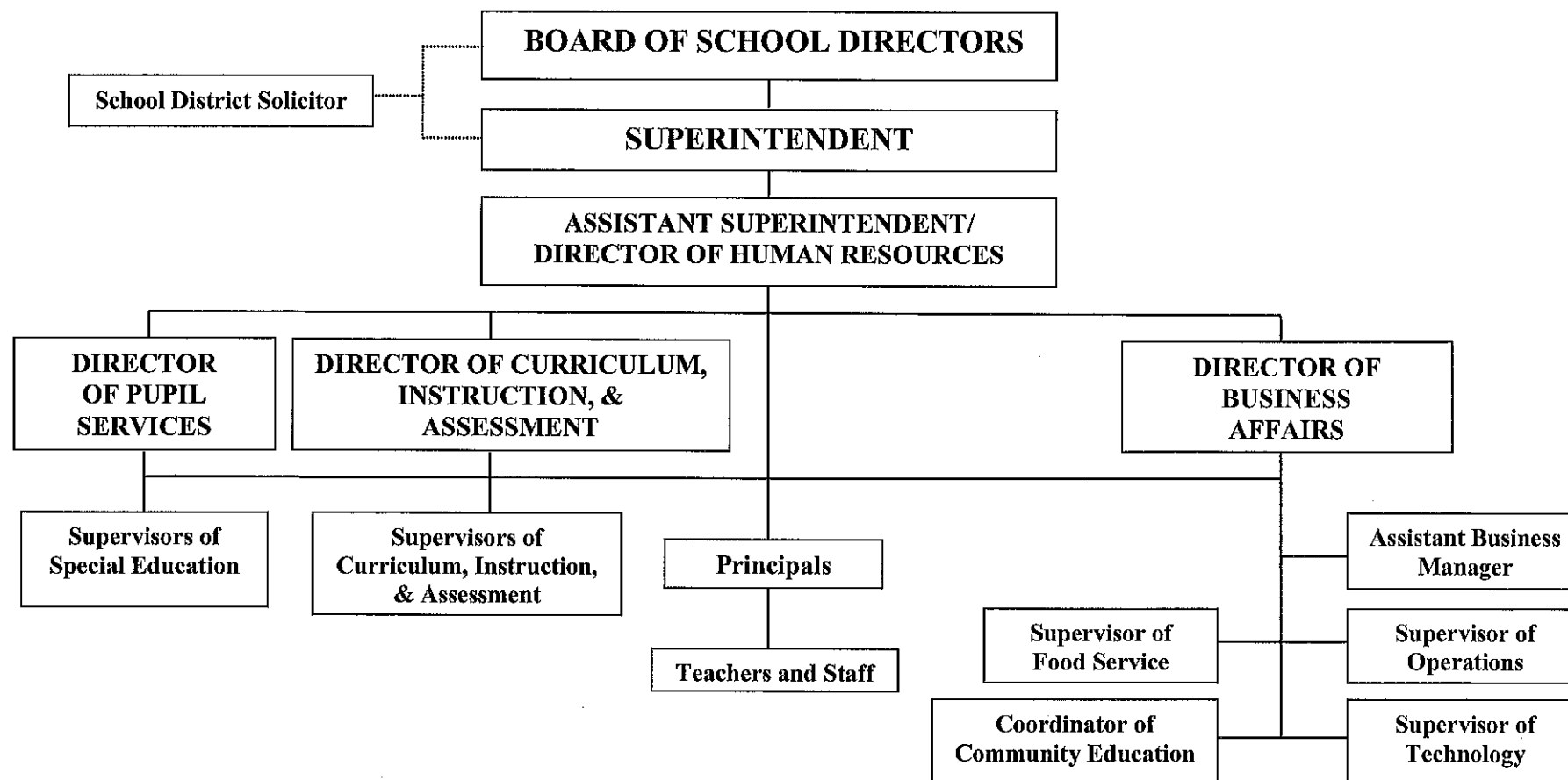
SECTION: LOCAL BOARD PROCEDURES

TITLE: ORGANIZATIONAL CHART

ADOPTED: June 27, 1971

REVISED: February 26, 2015

# SOUDERTON AREA SCHOOL DISTRICT



In the absence of the Superintendent, the Assistant Superintendent assumes the role of the Superintendent.

<u>Val Number</u>	<u>Description</u>	<u>Justification</u>
40540	<p>Expenditure code 5520 has an amount entered as a Special Item. Provide a description of this Special Item.</p> <p>Exp detail, 5520, Fund 10: \$1,305.76</p>	<p>An employee's email was hacked. An email went to the payroll department from the employee to change bank information. It was only after the fact that we found out it was fraudulent.</p>

Amounts Expressed in Whole Dollars		<u>General Fund</u> <u>(10)</u>	<u>Public Purpose Trust</u> <u>(27)</u>	<u>Other Compt Approved</u> <u>(28)</u>	<u>Athletic / Activity</u> <u>(29)</u>	<u>Capital Reserve (690.</u> <u>1850)</u> <u>(31)</u>
<b>Assets And Deferred Outflows Of Resources</b>						
<b>Assets</b>						
0100	Cash and Cash Equivalents	12,491,135				
0110	Investments					
0120	Taxes Receivable	1,404,184				
0130	Due From Other Funds	1,214,716				
0141	Due From Other Governments	5,020,334				
0142	State Revenue Receivable					
0143	Federal Revenue Receivable					
0145	Other Intergovernmental Revenue Receivable					
0146	Due from Primary Government					
0147	Due from Component Unit					
0150	Other Receivables	241,721				
0170	Inventories					
0180	Prepaid Expenses (Expenditures)	136,068				
0190	Other Current Assets					
<b>Total Assets</b>		<b>\$20,508,158</b>				
0910	Deferred Outflows of Resources					
<b>Total Assets And Deferred Outflows Of Resources</b>		<b>\$20,508,158</b>				

LEA : 123467103     Souderton Area SD

Printed 1/2/2020 9:57:09 AM

Amounts Expressed in Whole Dollars		<u>Capital Reserve (1431)</u> <u>(32)</u>	<u>Other Capital Projects</u> <u>Fund</u> <u>(39)</u>	<u>Debt Service</u> <u>(40)</u>	<u>Permanent</u> <u>(90)</u>	<u>Total Governmental</u> <u>Funds</u>
<b>Assets And Deferred Outflows Of Resources</b>						
<b>Assets</b>						
0100	Cash and Cash Equivalents		4,672,654			17,163,789
0110	Investments					
0120	Taxes Receivable					1,404,184
0130	Due From Other Funds					1,214,716
0141	Due From Other Governments					5,020,334
0142	State Revenue Receivable					
0143	Federal Revenue Receivable					
0145	Other Intergovernmental Revenue Receivable					
0146	Due from Primary Government					
0147	Due from Component Unit					
0150	Other Receivables		16,000			257,721
0170	Inventories					
0180	Prepaid Expenses (Expenditures)					136,068
0190	Other Current Assets					
<b>Total Assets</b>			<b>\$4,688,654</b>			<b>\$25,196,812</b>
0910	Deferred Outflows of Resources					
<b>Total Assets And Deferred Outflows Of Resources</b>			<b>\$4,688,654</b>			<b>\$25,196,812</b>

LEA : 123467103     Souderton Area SD

Printed 1/2/2020 9:57:09 AM

Amounts Expressed in Whole Dollars		<u>General Fund</u> <u>(10)</u>	<u>Public Purpose Trust</u> <u>(27)</u>	<u>Other Compt Approved</u> <u>(28)</u>	<u>Athletic / Activity</u> <u>(29)</u>	<u>Capital Reserve (690.</u> <u>1850)</u> <u>(31)</u>
<b>Liabilities And Deferred Inflows Of Resources And Fund Balances</b>						
<b>Liabilities</b>						
0400	Due to Other Funds	162,963				
0411	Due to Other Governments	319,937				
0412	Due to Primary Government					
0413	Due to Component Unit					
0420	Accounts Payable	914,312				
0430	Contracts Payable					
0440	Current Portion of Long-Term Debt	213,268				
0450	Short-Term Payables					
0461	Accrued Salaries and Benefits	6,516,784				
0462	Payroll Deductions and Withholding	417,387				
0480	Unearned Revenues	83,284				
0490	Other Current Liabilities	404,748				
<b>Total Liabilities</b>		<b>\$9,032,683</b>				
0950	Deferred Inflows of Resources	1,008,073				
<b>Fund Balances</b>						
0810	Nonspendable Fund Balance	136,068				
0820	Restricted Fund Balance					
0830	Committed Fund Balance					
0840	Assigned Fund Balance	269,111				
0850	Unassigned Fund Balance	10,062,223				
<b>Total Fund Balances</b>		<b>\$10,467,402</b>				
<b>Total Liabilities, Deferred Inflows Of Resources And Fund Balances</b>		<b>\$20,508,158</b>				

LEA : 123467103     Souderton Area SD

Printed 1/2/2020 9:57:09 AM

Amounts Expressed in Whole Dollars		<u>Capital Reserve (1431)</u> <u>(32)</u>	<u>Other Capital Projects</u> <u>Fund</u> <u>(39)</u>	<u>Debt Service</u> <u>(40)</u>	<u>Permanent</u> <u>(90)</u>	<u>Total Governmental</u> <u>Funds</u>
<b>Liabilities And Deferred Inflows Of Resources And Fund Balances</b>						
<b>Liabilities</b>						
0400	Due to Other Funds					162,963
0411	Due to Other Governments					319,937
0412	Due to Primary Government					
0413	Due to Component Unit					
0420	Accounts Payable		19,328			933,640
0430	Contracts Payable					
0440	Current Portion of Long-Term Debt					213,268
0450	Short-Term Payables					
0461	Accrued Salaries and Benefits					6,516,784
0462	Payroll Deductions and Withholding					417,387
0480	Unearned Revenues					83,284
0490	Other Current Liabilities					404,748
<b>Total Liabilities</b>			<b>\$19,328</b>			<b>\$9,052,011</b>
0950	Deferred Inflows of Resources					1,008,073
<b>Fund Balances</b>						
0810	Nonspendable Fund Balance					136,068
0820	Restricted Fund Balance		4,669,326			4,669,326
0830	Committed Fund Balance					
0840	Assigned Fund Balance					269,111
0850	Unassigned Fund Balance					10,062,223
<b>Total Fund Balances</b>			<b>\$4,669,326</b>			<b>\$15,136,728</b>
<b>Total Liabilities, Deferred Inflows Of Resources And Fund Balances</b>			<b>\$4,688,654</b>			<b>\$25,196,812</b>



Amounts Expressed in Whole Dollars		<u>General Fund</u> <u>(10)</u>	<u>Public Purpose Trust</u> <u>(27)</u>	<u>Other Compt Approved</u> <u>(28)</u>	<u>Athletic / Activity</u> <u>(29)</u>	<u>Capital Reserve (690.</u> <u>1850)</u> <u>(31)</u>
<b>Revenues</b>						
6000	Revenue from Local Sources	97,332,911				
7000	Revenue from State Sources	29,773,759				
8000	Revenue from Federal Sources	1,192,653				
<b>Total Revenues</b>		<b>\$128,299,323</b>				
<b>Expenditures</b>						
1000	Instruction	77,850,833				
2000	Support Services	35,614,037				
3000	Operation of Non-Instructional Services	1,514,642				
4000	Facilities Acquisition, Construction and Improvement Services	26,229				
5110	Debt Service	9,804,143				
5130	Refund of Prior Year Revenues / Receipts	2				
<b>Total Expenditures</b>		<b>\$124,809,886</b>				
<b>Excess (Deficiency) Of Revenues Over Expenditures</b>		<b>\$3,489,437</b>				
<b>Other Financing Sources (Uses)</b>						
9110	Face Value of Bonds Issued					
9120	Proceeds from Refunding of Bonds					
9130	Bond Premiums					
9200	Proceeds from Extended-Term Financing					
9300	Interfund Transfers - IN	1,208,607				
9400	Sale of or Compensation for Loss of Fixed Assets	800				
9710	Transfers from Component Units					
9720	Transfers from Primary Governments					
9910	Other Financing Sources Not Listed in the 9000 Series					
9990	Insurance Recoveries					
5120	Debt Service – Refunded Bonds					
5150	Bond Discounts					
5200	Interfund Transfers – Out	3,153,867				
5300	Transfers Out to Component Units/Primary Governments					
<b>Total Other Financing Sources (Uses)</b>		<b>(\$1,944,460)</b>				

LEA : 123467103     Souderton Area SD

Printed 1/2/2020 9:57:35 AM

Amounts Expressed in Whole Dollars		<u>Capital Reserve (1431</u> <u>(32)</u>	<u>Other Capital Projects</u> <u>Fund</u> <u>(39)</u>	<u>Debt Service</u> <u>(40)</u>	<u>Permanent</u> <u>(90)</u>	<u>Total Governmental</u> <u>Funds</u>
<b>Revenues</b>						
6000	Revenue from Local Sources		96,668			97,429,579
7000	Revenue from State Sources					29,773,759
8000	Revenue from Federal Sources					1,192,653
<b>Total Revenues</b>			<b>\$96,668</b>			<b>\$128,395,991</b>
<b>Expenditures</b>						
1000	Instruction					77,850,833
2000	Support Services		12,600			35,626,637
3000	Operation of Non-Instructional Services					1,514,642
4000	Facilities Acquisition, Construction and Improvement Services		2,216,510			2,242,739
5110	Debt Service					9,804,143
5130	Refund of Prior Year Revenues / Receipts					2
<b>Total Expenditures</b>			<b>\$2,229,110</b>			<b>\$127,038,996</b>
<b>Excess (Deficiency) Of Revenues Over Expenditures</b>			<b>(\$2,132,442)</b>			<b>\$1,356,995</b>
<b>Other Financing Sources (Uses)</b>						
9110	Face Value of Bonds Issued					
9120	Proceeds from Refunding of Bonds					
9130	Bond Premiums					
9200	Proceeds from Extended-Term Financing					
9300	Interfund Transfers - IN		3,153,867			4,362,474
9400	Sale of or Compensation for Loss of Fixed Assets					800
9710	Transfers from Component Units					
9720	Transfers from Primary Governments					
9910	Other Financing Sources Not Listed in the 9000 Series					
9990	Insurance Recoveries					
5120	Debt Service – Refunded Bonds					
5150	Bond Discounts					
5200	Interfund Transfers – Out					3,153,867
5300	Transfers Out to Component Units/Primary Governments					
<b>Total Other Financing Sources (Uses)</b>			<b>\$3,153,867</b>			<b>\$1,209,407</b>

Amounts Expressed in Whole Dollars		<u>General Fund</u> <u>(10)</u>	<u>Public Purpose Trust</u> <u>(27)</u>	<u>Other Compt Approved</u> <u>(28)</u>	<u>Athletic / Activity</u> <u>(29)</u>	<u>Capital Reserve</u> <u>(690.</u> <u>1850)</u> <u>(31)</u>
<b>Special And Extraordinary Items</b>						
9920	Special Items – Gains					
9930	Extraordinary Items – Gains					
5520	Special Items – Losses	1,306				
5530	Extraordinary Items – Losses					
<b>Net Change In Fund Balances</b>		<b>\$1,543,671</b>				
<b>Fund Balance</b>						
0001	Fund Balance - Beginning of Fiscal Year	8,923,731				
<b>Fund Balance - End Of Year</b>		<b>\$10,467,402</b>				

Amounts Expressed in Whole Dollars		<u>Capital Reserve (1431)</u> <u>(32)</u>	<u>Other Capital Projects</u> <u>Fund</u> <u>(39)</u>	<u>Debt Service</u> <u>(40)</u>	<u>Permanent</u> <u>(90)</u>	<u>Total Governmental</u> <u>Funds</u>
<b>Special And Extraordinary Items</b>						
9920	Special Items – Gains					
9930	Extraordinary Items – Gains					
5520	Special Items – Losses					1,306
5530	Extraordinary Items – Losses					
<b>Net Change In Fund Balances</b>			\$1,021,425			\$2,565,096
<b>Fund Balance</b>						
0001	Fund Balance - Beginning of Fiscal Year		3,647,901			12,571,632
<b>Fund Balance - End Of Year</b>			\$4,669,326			\$15,136,728

LEA : 123467103      Souderton Area SD

Printed 1/2/2020 9:57:38 AM

Amounts Expressed in Whole Dollars	Food Service (51)	Child Care Operations (52)	Other Enterprise (58)	TOTAL	Internal Service (60)
<b>Assets And Deferred Outflows Of Resources</b>					
<b>Current Assets</b>					
0100 Cash and Cash Equivalents	317,413			317,413	4,145,534
0110 Investments					
0130 Due From Other Funds	162,525			162,525	
0141 Due From Other Governments	27,560			27,560	
0142 State Revenue Receivable					
0143 Federal Revenue Receivable					
0146 Due from Primary Government					
0147 Due from Component Unit					
0150 Other Receivables	15,561			15,561	37,042
0170 Inventories	85,241			85,241	
0180 Prepaid Expenses (Expenditures)					
0190 Other Current Assets					
<b>Total Current Assets</b>	<b>\$608,300</b>			<b>\$608,300</b>	<b>\$4,182,576</b>
<b>Noncurrent Assets</b>					
0211 Land					
0212 Site Improvements (Net)					
0220 Buildings and Building Improvements (Net)					
0230 Machinery, Equipment and Furniture (Net)	436,596			436,596	
0250 Construction in Progress					
0260 Long Term Prepayments					
0290 Other Noncurrent Assets					
<b>Total Noncurrent Assets</b>	<b>\$436,596</b>			<b>\$436,596</b>	
0910 Deferred Outflows of Resources	444,736			444,736	
<b>Total Assets And Deferred Outflows Of Resources</b>	<b>\$1,489,632</b>			<b>\$1,489,632</b>	<b>\$4,182,576</b>

Amounts Expressed in Whole Dollars	<u>Food Service</u> <u>(51)</u>	<u>Child Care</u> <u>Operations</u> <u>(52)</u>	<u>Other Enterprise</u> <u>(58)</u>	<u>TOTAL</u>	<u>Internal Service</u> <u>(60)</u>
<b>Liabilities And Deferred Inflows Of Resources And Net Position</b>					
<b>Current Liabilities</b>					
0400 Due to Other Funds	125			125	1,208,607
0411 Due to Other Governments					
0413 Due to Component Unit					
0420 Accounts Payable	18,562			18,562	668,313
0430 Contracts Payable					
0440 Current Portion of Long-Term Debt					
0450 Short-Term Payables					
0461 Accrued Salaries and Benefits	5,253			5,253	
0462 Payroll Deductions and Withholding					
0480 Unearned Revenues	94,110			94,110	
0490 Other Current Liabilities					88,347
<b>Total Current Liabilities</b>	<b>\$118,050</b>			<b>\$118,050</b>	<b>\$1,965,267</b>
<b>Noncurrent Liabilities</b>					
0510 Bonds Payable					
0520 Extended-Term Financing Agreements Payable					
0530 Lease-Purchase Obligations					
0540 Accumulated Compensated Absences					
0550 Authority Lease Obligations					
0560 Other Post-Employment Benefits (OPEB)	139,903			139,903	
0570 Net Pension Liability	3,041,221			3,041,221	
0599 Other Noncurrent Liabilities					
<b>Total Noncurrent Liabilities</b>	<b>\$3,181,124</b>			<b>\$3,181,124</b>	
<b>Total Liabilities</b>	<b>\$3,299,174</b>			<b>\$3,299,174</b>	<b>\$1,965,267</b>
0950 Deferred Inflows of Resources	4,826			4,826	
<b>Net Position</b>					
0791 Net Investment in Capital Assets	436,595			436,595	
0008 Restricted Net Position (0792 – 0798)					
0799 Unrestricted Net Position	(2,250,963)			(2,250,963)	2,217,309
<b>Total Net Position</b>	<b>(\$1,814,368)</b>			<b>(\$1,814,368)</b>	<b>\$2,217,309</b>
<b>Total Liabilities And Deferred Inflows Of Resources And Net Position</b>	<b>\$1,489,632</b>			<b>\$1,489,632</b>	<b>\$4,182,576</b>

Amounts Expressed in Whole Dollars	Food Service (51)	Child Care Operations (52)	Other Enterprise (58)	TOTAL	Internal Service (60)
<b>Operating Revenues</b>					
6600 Food Service Revenue	1,468,996			1,468,996	
0071 Charges for Services					11,649,069
0072 Other Operating Revenue	40,781			40,781	8,230
<b>Total Operating Revenues</b>	<b>\$1,509,777</b>			<b>\$1,509,777</b>	<b>\$11,657,299</b>
<b>Operating Expenses</b>					
100 Personnel Services – Salaries	867,852			867,852	
200 Personnel Services – Employee Benefits	491,178			491,178	
300 Purchased Professional and Technical Services	1,495			1,495	
400 Purchased Property Services	96,755			96,755	
500 Other Purchased Services	2,761			2,761	
600 Supplies	1,236,853			1,236,853	
740 Depreciation	50,290			50,290	
810 Dues and Fees	1,771			1,771	
890 Miscellaneous Expenditures					10,817,735
<b>Total Operating Expenses</b>	<b>\$2,748,955</b>			<b>\$2,748,955</b>	<b>\$10,817,735</b>
<b>Operating Income (Loss)</b>	<b>(\$1,239,178)</b>			<b>(\$1,239,178)</b>	<b>\$839,564</b>
<b>Non Operating Revenues (Expenses)</b>					
6500 Earnings on Investments	588			588	
6920 Contributions and Donations from Private Sources					
6930 Gains or Losses on Sale of Fixed Assets					
6991 Refunds of a Prior Year Expenditure					
7000 Revenue from State Sources	253,712			253,712	
8000 Revenue from Federal Sources	976,996			976,996	
9990 Insurance Recoveries					
820 Claims and Judgments Against the LEA					
830 Interest					
<b>TOTAL Non Operating Revenues (Expenses)</b>	<b>\$1,231,296</b>			<b>\$1,231,296</b>	
<b>Income (Loss) Before Contributions And Transfers</b>	<b>(\$7,882)</b>			<b>(\$7,882)</b>	<b>\$839,564</b>

Amounts Expressed in Whole Dollars	<u>Food Service</u> <u>(51)</u>	<u>Child Care Operations</u> <u>(52)</u>	<u>Other Enterprise</u> <u>(58)</u>	<u>TOTAL</u>	<u>Internal Service</u> <u>(60)</u>
<b>Contributions, Transfers, and Special and Extraordinary Items</b>					
5200 Interfund Transfers – Out					1,226,511
5300 Transfers Out to Component Units/Primary Governments					
5520 Special Items – Losses					
5530 Extraordinary Items – Losses					
9300 Interfund Transfers - IN	17,904			17,904	
9500 Capital Contributions					
9700 Transfers IN From Component Units/Primary Governments					
9920 Special Items – Gains					
9930 Extraordinary Items – Gains					
<b>Change In Net Position</b>	<b>\$10,022</b>			<b>\$10,022</b>	<b>(\$386,947)</b>
0002 Net Position - Beginning of Fiscal Year	(1,824,389)			(1,824,389)	2,604,256
0003 Accounting Changes / Residual Equity Transfers					
<b>Net Position - End Of Year</b>	<b>(\$1,814,367)</b>			<b>(\$1,814,367)</b>	<b>\$2,217,309</b>



LEA : 123467103      Souderton Area SD

Printed 1/2/2020 9:58:07 AM

Amounts Expressed in Whole Dollars	<u>Food Service</u> <u>(51)</u>	<u>Child Care Operations</u> <u>(52)</u>	<u>Other Enterprise</u> <u>(58)</u>	<u>TOTAL</u>	<u>Internal Service(60)</u>
<b>Cash Flows From Operating Activities</b>					
0011 Cash Receipts From Users	1,296,941			1,296,941	
0012 Cash Receipts From Assessments Made to Other Funds					11,615,508
0013 Cash Receipts From Earnings on Investments					8,230
0014 Cash Receipts From Other Operating Revenue	40,781			40,781	
0015 Cash Payments To Employees For Services	1,339,797			1,339,797	
0016 Cash Payments For Insurance Claims					9,431,486
0017 Cash Payments To Suppliers For Goods and Services	1,199,370			1,199,370	
0018 Cash Payments For Other Operating Expenses	1,771			1,771	351,500
<b>Net Cash Provided By (Used For) Operating Activities</b>	<b>(\$1,203,216)</b>			<b>(\$1,203,216)</b>	<b>\$1,840,752</b>
<b>Cash Flows From Non-Capital Financing Activities</b>					
0021 Receipts From Local Sources - 6000					
0022 Receipts From State Sources - 7000	254,069			254,069	
0023 Receipts From Federal Sources -8000	804,246			804,246	
0024 Notes and Loans Received (Repaid)					
0025 Interest Paid on Notes/Loans - 5100-830					
0026 Operating Transfers In (Out)/Residual Equity Trans					
0027 Operating Transfers In (Out) Primary Government / Comp Unit	17,904			17,904	(1,226,511)
0028 Receipts From Refund of Prior Year Expenditures - 6991					
0029 Special and Extraordinary Gains (losses)					
0030 Receipts from Insurance Recoveries -9990					
<b>Net Cash Prov By (Used for) Non-Capital Financing Activities</b>	<b>\$1,076,219</b>			<b>\$1,076,219</b>	<b>(\$1,226,511)</b>
<b>Cash Flows From Capital and Related Financing Activities</b>					
0031 Payments For Fac Acq, Const, and Imp - 4000	(5,809)			(5,809)	
0032 Gain / (Loss) on Sale of Fixed Assets - 6930					
0033 Proceeds From Extended Term Financing - 9200					
0034 Principal Paid on Financing Agreements					
0035 Interest Paid on Financing Agreements - 5100-830					
0036 (Inc) Dec in Contributed Capital					
<b>Net Cash Prov By (Used for) Capital and Related Financing Activities</b>	<b>(\$5,809)</b>			<b>(\$5,809)</b>	
<b>Cash Flows From Investing Activities</b>					
0041 Earnings on Investments - 6500	588			588	
0042 Purchase of Inv Securities / Deposits to Inv Pools					
0043 Receipts From Investment Pool Withdrawals					
0044 Proceeds from Sale and Maturity of Inv Securities					

LEA : 123467103      Souderton Area SD

Printed 1/2/2020 9:58:07 AM

0045   Loans Received (Paid)

Net Cash Prov By (Used for) Investing Activities	\$588	\$588
--	-------	-------

LEA : 123467103      Souderton Area SD

Printed 1/2/2020 9:58:07 AM

	Food Service (51)	Child Care Operations (52)	Other Enterprise (58)	TOTAL	Internal Service (60)
<b>Net Increase (Decrease) in Cash Flows</b>	(132,218)			(132,218)	614,241
0004 Cash and Cash Equivalents Beginning of Year	449,631			449,631	3,531,293
<b>Cash and Cash Equivalents at Year End</b>	<b>\$317,413</b>			<b>\$317,413</b>	<b>\$4,145,534</b>
<b>Reconciliation of Operating Income (Loss) To Net Cash Provided by (Used For) Operating Activities</b>					
0005 Operating Income (Loss) per REP	(1,239,178)			(1,239,178)	839,564
<b>Adjustments</b>					
0051 Depreciation and Net Amortization	50,290			50,290	
0052 Provision for Uncollectible Accounts					
0053 Other Adjustments	174,988			174,988	
<b>Effect of Changes in Assets, Liabilities, Deferred Outflows and Deferred Inflows</b>					
0054 (Inc) Dec In Accounts Receivable (0120-0150)	(10,422)			(10,422)	(33,561)
0055 Advances to Other Funds (0160)	(161,633)			(161,633)	
0056 (Inc) Dec in Inventories (0170)	(13,513)			(13,513)	
0057 (Inc) Dec in Prepaid Expenses (0180)					
0058 (Inc) Dec in Other Current or Noncurrent Assets					
0064 Deferred Outflows (0910)	64,037			64,037	
0059 Inc (Dec) in Accounts Payable (0400-0450)	(16,825)			(16,825)	946,402
0060 Inc (Dec) in Accrued Salaries/Benefits (0461)	(965)			(965)	
0065 Inc (Dec) in Net Pension Liabilities (0570)	(35,505)			(35,505)	
0066 Inc (Dec) in Other Postemp Benefit Oblig (0560)	(6,250)			(6,250)	
0061 Inc (Dec) in Payroll Deductions/Withholding (0462)					
0062 Inc (Dec) in Unearned Revenue (0480)					
0063 Inc (Dec) in Other Current or Noncurrent Liabilities	(6,155)			(6,155)	88,347
0067 Deferred Inflows (0950)	(2,084)			(2,084)	
<b>Total Adjustments</b>	<b>\$35,963</b>			<b>\$35,963</b>	<b>\$1,001,188</b>
<b>Cash Provided By (Used for) Total</b>	<b>(\$1,203,215)</b>			<b>(\$1,203,215)</b>	<b>\$1,840,752</b>

COMBINED STATEMENT OF CASH FLOWS  
SCHEDULE OF NONCASH INVESTING, CAPITAL, AND FINANCING ACTIVITIES

Explanation of Transaction and Balance Sheet Effect	Amount
Total	

LEA : 123467103     Souderton Area SD

Printed 1/2/2020 9:58:09 AM

Amounts Expressed in Whole Dollars	<u>Private Purpose Trust</u> <u>(71)</u>	<u>Investment Trust</u> <u>(72)</u>	<u>Pension Trust</u> <u>(73)</u>	<u>Activity</u> <u>(81)</u>
<b>Assets And Deferred Outflows Of Resources</b>				
<b>Assets</b>				
0100 Cash and Cash Equivalents	76,640			271,050
0110 Investments				
0130 Due From Other Funds				438
0147 Due from Component Unit				
0150 Other Receivables				2,179
0170 Inventories				
0180 Prepaid Expenses (Expenditures)				
0190 Other Current Assets				
0220 Buildings and Building Improvements (Net)				
0230 Machinery, Equipment and Furniture (Net)				
<b>Total Assets</b>	<b>\$76,640</b>			<b>\$273,667</b>
0910 Deferred Outflows of Resources				
<b>Total Assets And Deferred Outflows Of Resources</b>	<b>\$76,640</b>			<b>\$273,667</b>

LEA : 123467103     Souderton Area SD

Printed 1/2/2020 9:58:09 AM

Amounts Expressed in Whole Dollars

	<u>Other Agency</u> <u>(89)</u>	<u>Discrete Component Units</u> <u>(98)</u>	<u>Discrete Component Units</u> <u>(99)</u>	<u>Total Fiduciary Funds</u>
<b>Assets And Deferred Outflows Of Resources</b>				
<b>Assets</b>				
0100 Cash and Cash Equivalents				347,690
0110 Investments				
0130 Due From Other Funds				438
0147 Due from Component Unit				
0150 Other Receivables				2,179
0170 Inventories				
0180 Prepaid Expenses (Expenditures)				
0190 Other Current Assets				
0220 Buildings and Building Improvements (Net)				
0230 Machinery, Equipment and Furniture (Net)				
<b>Total Assets</b>				<b>\$350,307</b>
0910 Deferred Outflows of Resources				
<b>Total Assets And Deferred Outflows Of Resources</b>				<b>\$350,307</b>

LEA : 123467103     Souderton Area SD

Printed 1/2/2020 9:58:09 AM

Amounts Expressed in Whole Dollars	<u>Private Purpose Trust</u> <u>(71)</u>	<u>Investment Trust</u> <u>(72)</u>	<u>Pension Trust</u> <u>(73)</u>	<u>Activity</u> <u>(81)</u>
<b>Liabilities, Deferred Inflows Of Resources And Net Position</b>				
<b>Liabilities</b>				
0400 Due to Other Funds				5,984
0411 Due to Other Governments				
0412 Due to Primary Government				
0413 Due to Component Unit				
0420 Accounts Payable				8,776
0430 Contracts Payable				
0450 Short-Term Payables				
0461 Accrued Salaries and Benefits				
0462 Payroll Deductions and Withholding				
0480 Unearned Revenues				
0490 Other Current Liabilities				258,907
<b>Total Liabilities</b>				<b>\$273,667</b>
0950 Deferred Inflows of Resources				
<b>Net Position</b>				
0791 Net Investment in Capital Assets				
0009 Restricted Net Position (0792 – 0798)				
0799 Unrestricted Net Position	76,640			
<b>Total Net Position</b>	<b>\$76,640</b>			
<b>Total Liabilities, Deferred Inflows Of Resources And Net Position</b>	<b>\$76,640</b>			<b>\$273,667</b>

LEA : 123467103     Souderton Area SD

Printed 1/2/2020 9:58:09 AM

Amounts Expressed in Whole Dollars

Other Agency     Discrete Component Units     Discrete Component Units     Total Fiduciary Funds  
(89)     (98)     (99)

Liabilities, Deferred Inflows Of Resources And Net Position

Liabilities

0400 Due to Other Funds				5,984
0411 Due to Other Governments				
0412 Due to Primary Government				
0413 Due to Component Unit				
0420 Accounts Payable				8,776
0430 Contracts Payable				
0450 Short-Term Payables				
0461 Accrued Salaries and Benefits				
0462 Payroll Deductions and Withholding				
0480 Unearned Revenues				
0490 Other Current Liabilities				258,907
Total Liabilities				\$273,667

0950 Deferred Inflows of Resources

Net Position

0791 Net Investment in Capital Assets				
0009 Restricted Net Position (0792 – 0798)				
0799 Unrestricted Net Position				76,640
Total Net Position				\$76,640
Total Liabilities, Deferred Inflows Of Resources And Net Position				\$350,307



LEA : 123467103     Souderton Area SD

Printed 1/2/2020 9:58:10 AM

Amounts Expressed in Whole Dollars	<u>Private Purpose Trust</u> <u>(71)</u>	<u>Investment Trust</u> <u>(72)</u>	<u>Pension Trust</u> <u>(73)</u>	<u>Discrete Component</u> <u>Units</u> <u>(98)</u>	<u>Discrete Component</u> <u>Units</u> <u>(99)</u>	<u>Total Fiduciary</u> <u>Funds</u>
<b>Additions</b>						
0091 Gifts and Contributions	38,471					38,471
0092 Other Additions	41					41
<b>Deductions</b>						
0093 Scholarships Awarded	39,226					39,226
0094 Other Deductions	442					442
<b>Change In Net Position</b>	<b>(\$1,156)</b>					<b>(\$1,156)</b>
0006 Net Position – Beginning of Fiscal Year	77,795					77,795
0007 Net Position Held in Trust for Pension Benefits						
<b>Net Position - End of Fiscal Year</b>	<b>\$76,639</b>					<b>\$76,639</b>

LEA : 123467103     Souderton Area SD

General Fund (10)

Printed 1/2/2020 9:58:13 AM

Page - 1 of 4

	Revenue Reported In Current Year	Current Year Tax Accrual	Prior Year Tax Accrual	Taxes Collected In Current Year
<b>Revenue from Local Sources</b>				
6111 Current Real Estate Taxes	80,298,573.62			80,298,573.62
6112 Interim Real Estate Taxes	520,822.80			520,822.80
6113 Public Utility Realty Taxes	89,990.63			89,990.63
6114 Payments in Lieu of Current Taxes - State / Local	319,731.91			319,731.91
6120 Current Per Capita Taxes, Section 679	141,144.40			141,144.40
6141 Current Act 511 Per Capita Taxes	141,144.40			141,144.40
6151 Current Act 511 Earned Income Taxes	8,331,492.65			8,331,492.65
6153 Current Act 511 Real Estate Transfer Taxes	1,311,668.32			1,311,668.32
6411 Delinquent Real Estate Taxes	1,492,854.11			1,492,854.11
6420 Delinquent Per Capita Taxes, Section 679	18,445.21			18,445.21
6440 Delinquent Local Enabling Taxes - Flat Rate Assessments	18,445.39			18,445.39
6500 Earnings on Investments	911,348.97			
6700 Revenues from LEA Activities	577,679.92			
6829 State Revenue Received from Other Sources	50,000.00			
6832 Federal IDEA Revenue Received as Pass Through	1,220,211.17			
6839 Federal Revenue Received from Other Sources	54,227.21			
6890 Other Revenue from Intermediary Sources	4,998.10			
6910 Rentals	179,499.56			
6920 Contributions and Donations from Private Sources	146,074.65			
6942 Summer School Tuition	404.50			
6943 Adult Education Tuition	139,293.00			
6944 Receipts from Other LEAs in Pennsylvania - Education	43,906.25			
6945 Receipts from Out-of-State LEAs	7,743.04			
6949 Other Tuition from Patrons	8,588.40			
6961 Transportation Services Provided Other Pennsylvania LEAs	69,320.55			
6962 Other Services Provided Other Pennsylvania LEAs	190,170.48			
6969 All Other Services Provided Other Governments	664.17			
6980 Revenue from Community Services Activities	487,876.80			
6999 Other Revenues Not Specified Above	556,590.95			
<b>TOTAL Revenue from Local Sources</b>	<b>\$97,332,911.16</b>			<b>\$92,684,313.44</b>

	Revenue Reported In Current Year			
<b><u>Revenue from State Sources</u></b>				
7110 Basic Education Funding	9,540,633.51			
7160 Tuition for Orphans Subsidy	293,543.47			
7271 Special Education funds for School-Aged Pupils	3,301,431.06			
7311 Pupil Transportation Subsidy	1,836,145.74			
7312 Nonpublic and Charter School Pupil Transportation Subsidy	363,825.00			
7320 Rental and Sinking Fund Payments / Building Reimbursement Subsidy	856,829.09			
7330 Health Services (Medical, Dental, Nurse, Act 25)	126,448.59			
7340 State Property Tax Reduction Allocation	2,226,957.93			
7361 School Safety and Security Grants	63,867.70			
7505 Ready to Learn Block Grant	524,477.00			
7506 PAsmart Grants	1,058.77			
7810 State Share of Social Security and Medicare Taxes	1,886,862.34			
7820 State Share of Retirement Contributions	8,751,678.46			
<b>TOTAL Revenue from State Sources</b>	<b>\$29,773,758.66</b>			

	Revenue Reported In Current Year			
<b><u>Revenue from Federal Sources</u></b>				
8514 NCLB, Title I - Improving the Academic Achievement of the Disadvantaged	531,706.94			
8515 NCLB, Title II - Preparing, Training and Recruiting High Quality Teachers and Principals	135,708.07			
8516 NCLB, Title III - Language Instruction for Limited English Proficient and Immigrant Students	84,351.19			
8517 NCLB, Title IV - 21St Century Schools	34,452.00			
8810 School-Based Access Medicaid Reimbursement Program (SBAP) Reimbursements (Access)	399,198.25			
8820 Medical Assistance Reimbursement for Administrative Claiming (Quarterly) Program	7,236.19			
<b>TOTAL Revenue from Federal Sources</b>	<b>\$1,192,652.64</b>			

Revenue Reported <u>In Current Year</u>				
<b><u>Other Financing Sources</u></b>				
9340 Debt Service Fund Transfers	0.08			
9360 Internal Service Fund Transfers	1,208,606.63			
9400 Sale of or Compensation for Loss of Fixed Assets	800.00			
<b>TOTAL Other Financing Sources</b>	<b>\$1,209,406.71</b>			
<b>TOTAL FROM ALL SOURCES</b>	<b>\$129,508,729.17</b>			<b>\$92,684,313.44</b>

Revenue from Local Sources	97,332,911.16
Revenue from State Sources	29,773,758.66
Revenue from Federal Sources	1,192,652.64
Other Financing Sources	1,209,406.71
<b>TOTAL FROM ALL SOURCES</b>	<b>\$129,508,729.17</b>

LEA : 123467103      Souderton Area SD

Printed 1/2/2020 9:58:19 AM

General Fund (10)

1000 Instruction		Total
100 <u>Personnel Services – Salaries</u>		
100 Personnel Services – Salaries		39,336,762.08
Total Personnel Services – Salaries		\$39,336,762.08
200 <u>Personnel Services – Employee Benefits</u>		
210 Group Insurance – Contracted Provider		73,024.95
220 Social Security Contributions		2,875,894.55
230 PSERS Retirement Contributions		13,060,712.23
240 Tuition Reimbursement		51.74
250 Unemployment Compensation		13,786.83
260 Workers' Compensation		149,023.61
270 Group Insurance – Self-Insurance		6,100,947.00
291 Other Retirement Plans		186,054.85
Total Personnel Services – Employee Benefits		\$22,459,495.76
300 <u>Purchased Professional and Technical Services</u>		
322 Professional Educational Services – Ius		755,303.04
323 Professional Educational Services – Other Educational Agencies		260,569.19
329 Professional Educational Services – Other		1,845.00
330 Other Professional Services		2,377,333.78
390 Other Purchased Professional and Technical Services		30,337.00
Total Purchased Professional and Technical Services		\$3,425,388.01
400 <u>Purchased Property Services</u>		
430 Repairs and Maintenance Services		2,834.45
Total Purchased Property Services		\$2,834.45
500 <u>Other Purchased Services</u>		
510 Student Transportation Services		42,052.37
530 Communications		1,394.72
550 Printing and Binding		29,599.44
561 Tuition To Other School Districts Within the State		129,010.64
562 Tuition To Pennsylvania Charter Schools		4,344,808.20
563 Tuition To Nonpublic Schools		2,503,560.73
564 Tuition To Career and Technology Centers		2,043,097.38
566 Tuition To Institutions of Higher Education and Technical Institutes		6,000.00
567 Tuition To Approved Private Schools (APS) and PA Chartered Schools for the Deaf and Blind		339,452.41
568 Tuition To Private Residential Rehabilitative Institutions (PRRI) [In-State] and Detention Centers		1,464,624.42
580 Travel		5,098.48
594 IU Payment By Withholding for Institutionalized Children's Programs – Special Classes		4,381.71
599 Other Miscellaneous Purchased Services		26,625.98
Total Other Purchased Services		\$10,939,706.48
600 <u>Supplies</u>		
610 General Supplies		539,779.37
630 Food		36,917.79
640 Books and Periodicals		150,954.43
650 Supplies & Fees – Technology Related		312,535.18

LEA : 123467103      Souderton Area SD

Printed 1/2/2020 9:58:19 AM

General Fund (10)

1000 Instruction		<u>Total</u>
Total Supplies		\$1,040,186.77
700 <u>Property</u>		
752	Capital Equipment – Original and Additional	512,118.12
762	Capitalized Equipment - Replacement	2,718.00
Total Property		\$514,836.12
800 <u>Other Objects</u>		
810	Dues and Fees	15,946.75
820	Claims and Judgments Against the LEA	115,105.99
890	Miscellaneous Expenditures	571.00
Total Other Objects		\$131,623.74
Total 1000 Instruction		\$77,850,833.41



LEA : 123467103     Souderton Area SD

Printed 1/2/2020 9:58:19 AM

General Fund (10)

1100 Regular Programs – Elementary / Secondary	Elementary	Secondary	Federal	Total
<b>100 Personnel Services – Salaries</b>				
100 Personnel Services – Salaries	13,774,821.49	15,922,151.94	398,049.94	30,095,023.37
<b>Total Personnel Services – Salaries</b>	<b>\$13,774,821.49</b>	<b>\$15,922,151.94</b>	<b>\$398,049.94</b>	<b>\$30,095,023.37</b>
<b>200 Personnel Services – Employee Benefits</b>				
210 Group Insurance – Contracted Provider	26,010.55	29,973.12		55,983.67
220 Social Security Contributions	1,007,911.50	1,164,498.86	29,870.64	2,202,281.00
230 PSERS Retirement Contributions	4,599,180.61	5,301,829.90	133,068.16	10,034,078.67
250 Unemployment Compensation	6,604.93	3,861.00		10,465.93
260 Workers' Compensation	53,636.96	59,416.69		113,053.65
270 Group Insurance – Self-Insurance	2,217,319.00	2,562,706.00		4,780,025.00
291 Other Retirement Plans	88,777.50	87,769.00		176,546.50
<b>Total Personnel Services – Employee Benefits</b>	<b>\$7,999,441.05</b>	<b>\$9,210,054.57</b>	<b>\$162,938.80</b>	<b>\$17,372,434.42</b>
<b>300 Purchased Professional and Technical Services</b>				
322 Professional Educational Services – Ius		638.47		638.47
323 Professional Educational Services – Other Educational Agencies		120.00		120.00
329 Professional Educational Services – Other		1,595.00		1,595.00
330 Other Professional Services	3,977.00	3,977.00		7,954.00
<b>Total Purchased Professional and Technical Services</b>	<b>\$3,977.00</b>	<b>\$6,330.47</b>		<b>\$10,307.47</b>
<b>400 Purchased Property Services</b>				
430 Repairs and Maintenance Services		2,834.45		2,834.45
<b>Total Purchased Property Services</b>		<b>\$2,834.45</b>		<b>\$2,834.45</b>
<b>500 Other Purchased Services</b>				
510 Student Transportation Services	3,225.47	21,389.95		24,615.42
530 Communications	100.00			100.00
561 Tuition To Other School Districts Within the State		39,248.49		39,248.49
562 Tuition To Pennsylvania Charter Schools	2,024,927.22	1,012,461.09		3,037,388.31
568 Tuition To Private Residential Rehabilitative Institutions (PRRI) [In-State] and Detention Centers	127,691.83	1,334,891.46		1,462,583.29
580 Travel	215.25	886.10		1,101.35
<b>Total Other Purchased Services</b>	<b>\$2,156,159.77</b>	<b>\$2,408,877.09</b>		<b>\$4,565,036.86</b>
<b>600 Supplies</b>				
610 General Supplies	208,658.95	275,223.20	28,364.33	512,246.48
630 Food		10,095.72		10,095.72
640 Books and Periodicals	28,317.03	81,980.46	17,297.38	127,594.87
650 Supplies & Fees – Technology Related	23,950.28	248,205.00	2,366.00	274,521.28
<b>Total Supplies</b>	<b>\$260,926.26</b>	<b>\$615,504.38</b>	<b>\$48,027.71</b>	<b>\$924,458.35</b>
<b>700 Property</b>				
752 Capital Equipment – Original and Additional	9,230.51	487,517.99		496,748.50
762 Capitalized Equipment - Replacement	2,718.00			2,718.00
<b>Total Property</b>	<b>\$11,948.51</b>	<b>\$487,517.99</b>		<b>\$499,466.50</b>
<b>800 Other Objects</b>				
810 Dues and Fees		276.00		276.00

LEA : 123467103     Souderton Area SD

Printed 1/2/2020 9:58:19 AM

General Fund (10)

1100 Regular Programs – Elementary / Secondary	<u>Elementary</u>	<u>Secondary</u>	<u>Federal</u>	<u>Total</u>
800 <u>Other Objects</u>				
890 Miscellaneous Expenditures	249.00	322.00		571.00
<b>Total Other Objects</b>	<b>\$249.00</b>	<b>\$598.00</b>		<b>\$847.00</b>
<b>Total 1100 Regular Programs – Elementary / Secondary</b>	<b>\$24,207,523.08</b>	<b>\$28,653,868.89</b>	<b>\$609,016.45</b>	<b>\$53,470,408.42</b>

LEA : 123467103     Souderton Area SD

Printed 1/2/2020 9:58:19 AM

General Fund (10)

1110 Regular Programs

	Elementary	Secondary	Federal	Total
<b>100 <u>Personnel Services – Salaries</u></b>				
100 Personnel Services – Salaries	13,774,821.49	15,922,151.94		29,696,973.43
<b>Total Personnel Services – Salaries</b>	<b>\$13,774,821.49</b>	<b>\$15,922,151.94</b>		<b>\$29,696,973.43</b>
<b>200 <u>Personnel Services – Employee Benefits</u></b>				
210 Group Insurance – Contracted Provider	26,010.55	29,973.12		55,983.67
220 Social Security Contributions	1,007,911.50	1,164,498.86		2,172,410.36
230 PSERS Retirement Contributions	4,599,180.61	5,301,829.90		9,901,010.51
250 Unemployment Compensation	6,604.93	3,861.00		10,465.93
260 Workers' Compensation	53,636.96	59,416.69		113,053.65
270 Group Insurance – Self-Insurance	2,217,319.00	2,562,706.00		4,780,025.00
291 Other Retirement Plans	88,777.50	87,769.00		176,546.50
<b>Total Personnel Services – Employee Benefits</b>	<b>\$7,999,441.05</b>	<b>\$9,210,054.57</b>		<b>\$17,209,495.62</b>
<b>300 <u>Purchased Professional and Technical Services</u></b>				
322 Professional Educational Services – Ius		638.47		638.47
323 Professional Educational Services – Other Educational Agencies		120.00		120.00
329 Professional Educational Services – Other		1,595.00		1,595.00
330 Other Professional Services	3,977.00	3,977.00		7,954.00
<b>Total Purchased Professional and Technical Services</b>	<b>\$3,977.00</b>	<b>\$6,330.47</b>		<b>\$10,307.47</b>
<b>400 <u>Purchased Property Services</u></b>				
430 Repairs and Maintenance Services		2,834.45		2,834.45
<b>Total Purchased Property Services</b>		<b>\$2,834.45</b>		<b>\$2,834.45</b>
<b>500 <u>Other Purchased Services</u></b>				
510 Student Transportation Services	3,225.47	21,389.95		24,615.42
530 Communications	100.00			100.00
561 Tuition To Other School Districts Within the State		39,248.49		39,248.49
562 Tuition To Pennsylvania Charter Schools	2,024,927.22	1,012,461.09		3,037,388.31
568 Tuition To Private Residential Rehabilitative Institutions (PRRI) [In-State] and Detention Centers	127,691.83	1,334,891.46		1,462,583.29
580 Travel	215.25	886.10		1,101.35
<b>Total Other Purchased Services</b>	<b>\$2,156,159.77</b>	<b>\$2,408,877.09</b>		<b>\$4,565,036.86</b>
<b>600 <u>Supplies</u></b>				
610 General Supplies	208,658.95	275,223.20		483,882.15
630 Food		10,095.72		10,095.72
640 Books and Periodicals	28,317.03	81,980.46		110,297.49
650 Supplies & Fees – Technology Related	23,950.28	248,205.00		272,155.28
<b>Total Supplies</b>	<b>\$260,926.26</b>	<b>\$615,504.38</b>		<b>\$876,430.64</b>
<b>700 <u>Property</u></b>				
752 Capital Equipment – Original and Additional	9,230.51	487,517.99		496,748.50
762 Capitalized Equipment - Replacement	2,718.00			2,718.00
<b>Total Property</b>	<b>\$11,948.51</b>	<b>\$487,517.99</b>		<b>\$499,466.50</b>
<b>800 <u>Other Objects</u></b>				
810 Dues and Fees		276.00		276.00

LEA : 123467103     Souderton Area SD

Printed 1/2/2020 9:58:19 AM

General Fund (10)

1110 Regular Programs

800 Other Objects

890 Miscellaneous Expenditures	Elementary	Secondary	Federal	Total
	249.00	322.00		571.00
Total Other Objects	\$249.00	\$598.00		\$847.00
Total 1110 Regular Programs	\$24,207,523.08	\$28,653,868.89		\$52,861,391.97

LEA : 123467103     Souderton Area SD

Printed 1/2/2020 9:58:19 AM

General Fund (10)

1190 Federally-Funded Regular Programs	<u>Elementary</u>	<u>Secondary</u>	<u>Federal</u>	<u>Total</u>
<b>100 <u>Personnel Services – Salaries</u></b>				
100 Personnel Services – Salaries			398,049.94	398,049.94
<b>Total Personnel Services – Salaries</b>			<b>\$398,049.94</b>	<b>\$398,049.94</b>
<b>200 <u>Personnel Services – Employee Benefits</u></b>				
220 Social Security Contributions			29,870.64	29,870.64
230 PSERS Retirement Contributions			133,068.16	133,068.16
<b>Total Personnel Services – Employee Benefits</b>			<b>\$162,938.80</b>	<b>\$162,938.80</b>
<b>600 <u>Supplies</u></b>				
610 General Supplies			28,364.33	28,364.33
640 Books and Periodicals			17,297.38	17,297.38
650 Supplies & Fees – Technology Related			2,366.00	2,366.00
<b>Total Supplies</b>			<b>\$48,027.71</b>	<b>\$48,027.71</b>
<b>Total 1190 Federally-Funded Regular Programs</b>			<b>\$609,016.45</b>	<b>\$609,016.45</b>

LEA : 123467103     Souderton Area SD

Printed 1/2/2020 9:58:19 AM

General Fund (10)

1200 Special Programs – Elementary / Secondary	Elementary	Secondary	Federal	Total
<b>100 Personnel Services – Salaries</b>				
100 Personnel Services – Salaries	3,800,629.17	4,310,899.84	803,680.24	8,915,209.25
<b>Total Personnel Services – Salaries</b>	<b>\$3,800,629.17</b>	<b>\$4,310,899.84</b>	<b>\$803,680.24</b>	<b>\$8,915,209.25</b>
<b>200 Personnel Services – Employee Benefits</b>				
210 Group Insurance – Contracted Provider	7,411.57	8,847.37		16,258.94
220 Social Security Contributions	278,571.79	314,369.34	56,941.65	649,882.78
230 PSERS Retirement Contributions	1,334,234.27	1,501,096.20	134,345.18	2,969,675.65
250 Unemployment Compensation	1,366.59	1,449.30		2,815.89
260 Workers' Compensation	16,534.38	18,459.25		34,993.63
270 Group Insurance – Self-Insurance	570,701.00	750,221.00		1,320,922.00
291 Other Retirement Plans	1,575.00	4,333.35		5,908.35
<b>Total Personnel Services – Employee Benefits</b>	<b>\$2,210,394.60</b>	<b>\$2,598,775.81</b>	<b>\$191,286.83</b>	<b>\$5,000,457.24</b>
<b>300 Purchased Professional and Technical Services</b>				
322 Professional Educational Services – Ius	370,000.24	312,210.20		682,210.44
323 Professional Educational Services – Other Educational Agencies	17,250.00	27,791.40		45,041.40
329 Professional Educational Services – Other		250.00		250.00
330 Other Professional Services	764,899.73	1,174,238.17	392,509.88	2,331,647.78
<b>Total Purchased Professional and Technical Services</b>	<b>\$1,152,149.97</b>	<b>\$1,514,489.77</b>	<b>\$392,509.88</b>	<b>\$3,059,149.62</b>
<b>500 Other Purchased Services</b>				
510 Student Transportation Services	1,360.00	4,399.95		5,759.95
550 Printing and Binding	74.27	89.04		163.31
561 Tuition To Other School Districts Within the State	1,763.97	57,773.11		59,537.08
562 Tuition To Pennsylvania Charter Schools	872,054.69	435,365.20		1,307,419.89
563 Tuition To Nonpublic Schools	508,644.10	1,994,916.63		2,503,560.73
566 Tuition To Institutions of Higher Education and Technical Institutes		6,000.00		6,000.00
567 Tuition To Approved Private Schools (APS) and PA Chartered Schools for the Deaf and Blind	144,620.00	194,832.41		339,452.41
568 Tuition To Private Residential Rehabilitative Institutions (PRRI) [In-State] and Detention Centers		2,041.13		2,041.13
580 Travel	1,696.68	2,195.81		3,892.49
594 IU Payment By Withholding for Institutionalized Children's Programs – Special Classes	4,381.71			4,381.71
<b>Total Other Purchased Services</b>	<b>\$1,534,595.42</b>	<b>\$2,697,613.28</b>		<b>\$4,232,208.70</b>
<b>600 Supplies</b>				
610 General Supplies	6,009.24	10,813.87	3,175.00	19,998.11
630 Food		70.10		70.10
640 Books and Periodicals	11,282.39	12,077.17		23,359.56
650 Supplies & Fees – Technology Related	21,634.84	16,379.06		38,013.90
<b>Total Supplies</b>	<b>\$38,926.47</b>	<b>\$39,340.20</b>	<b>\$3,175.00</b>	<b>\$81,441.67</b>
<b>700 Property</b>				
752 Capital Equipment – Original and Additional		9,301.25	6,068.37	15,369.62
<b>Total Property</b>		<b>\$9,301.25</b>	<b>\$6,068.37</b>	<b>\$15,369.62</b>
<b>800 Other Objects</b>				
810 Dues and Fees		25.57		25.57
820 Claims and Judgments Against the LEA		115,105.99		115,105.99

LEA : 123467103     Souderton Area SD

Printed 1/2/2020 9:58:19 AM

General Fund (10)

1200 Special Programs – Elementary / Secondary

	<u>Elementary</u>	<u>Secondary</u>	<u>Federal</u>	<u>Total</u>
Total Other Objects		\$115,131.56		\$115,131.56
Total 1200 Special Programs – Elementary / Secondary	\$8,736,695.63	\$11,285,551.71	\$1,396,720.32	\$21,418,967.66

LEA : 123467103     Souderton Area SD

Printed 1/2/2020 9:58:19 AM

General Fund (10)				
1210 Life Skills Support				
	<u>Elementary</u>	<u>Secondary</u>	<u>Federal</u>	<u>Total</u>
100 <u>Personnel Services – Salaries</u>				
100 Personnel Services – Salaries	303,883.93	560,765.32		864,649.25
<b>Total Personnel Services – Salaries</b>	<b>\$303,883.93</b>	<b>\$560,765.32</b>		<b>\$864,649.25</b>
200 <u>Personnel Services – Employee Benefits</u>				
210 Group Insurance – Contracted Provider	558.82	1,051.62		1,610.44
220 Social Security Contributions	22,630.50	41,606.28		64,236.78
230 PSERS Retirement Contributions	98,941.74	186,033.45		284,975.19
250 Unemployment Compensation	123.71	237.24		360.95
260 Workers' Compensation	1,138.15	2,089.04		3,227.19
270 Group Insurance – Self-Insurance	24,609.00	62,935.00		87,544.00
<b>Total Personnel Services – Employee Benefits</b>	<b>\$148,001.92</b>	<b>\$293,952.63</b>		<b>\$441,954.55</b>
300 <u>Purchased Professional and Technical Services</u>				
330 Other Professional Services	88,609.31	195,946.11	87,221.19	371,776.61
<b>Total Purchased Professional and Technical Services</b>	<b>\$88,609.31</b>	<b>\$195,946.11</b>	<b>\$87,221.19</b>	<b>\$371,776.61</b>
500 <u>Other Purchased Services</u>				
510 Student Transportation Services		2,450.00		2,450.00
563 Tuition To Nonpublic Schools		3,206.84		3,206.84
<b>Total Other Purchased Services</b>		<b>\$5,656.84</b>		<b>\$5,656.84</b>
600 <u>Supplies</u>				
610 General Supplies	646.57	3,035.54		3,682.11
640 Books and Periodicals		49.61		49.61
650 Supplies & Fees – Technology Related	4,305.43	1,515.93		5,821.36
<b>Total Supplies</b>	<b>\$4,952.00</b>	<b>\$4,601.08</b>		<b>\$9,553.08</b>
700 <u>Property</u>				
752 Capital Equipment – Original and Additional		6,680.00		6,680.00
<b>Total Property</b>		<b>\$6,680.00</b>		<b>\$6,680.00</b>
<b>Total 1210 Life Skills Support</b>	<b>\$545,447.16</b>	<b>\$1,067,601.98</b>	<b>\$87,221.19</b>	<b>\$1,700,270.33</b>



LEA : 123467103     Souderton Area SD

Printed 1/2/2020 9:58:19 AM

General Fund (10)				
1220 Sensory Support	<u>Elementary</u>	<u>Secondary</u>	<u>Federal</u>	<u>Total</u>
100 <u>Personnel Services – Salaries</u>				
100 Personnel Services – Salaries	587,912.20	92,104.08		680,016.28
<b>Total Personnel Services – Salaries</b>	<b>\$587,912.20</b>	<b>\$92,104.08</b>		<b>\$680,016.28</b>
200 <u>Personnel Services – Employee Benefits</u>				
210 Group Insurance – Contracted Provider	1,103.39	175.31		1,278.70
220 Social Security Contributions	43,278.44	6,728.66		50,007.10
230 PSERS Retirement Contributions	196,538.82	30,790.49		227,329.31
250 Unemployment Compensation	122.02	23.55		145.57
260 Workers' Compensation	2,194.34	346.42		2,540.76
270 Group Insurance – Self-Insurance	73,800.00	10,153.00		83,953.00
<b>Total Personnel Services – Employee Benefits</b>	<b>\$317,037.01</b>	<b>\$48,217.43</b>		<b>\$365,254.44</b>
300 <u>Purchased Professional and Technical Services</u>				
330 Other Professional Services	13,224.06	75,955.79	582.39	89,762.24
<b>Total Purchased Professional and Technical Services</b>	<b>\$13,224.06</b>	<b>\$75,955.79</b>	<b>\$582.39</b>	<b>\$89,762.24</b>
500 <u>Other Purchased Services</u>				
580 Travel	73.96			73.96
<b>Total Other Purchased Services</b>	<b>\$73.96</b>			<b>\$73.96</b>
600 <u>Supplies</u>				
610 General Supplies	709.50	433.66		1,143.16
640 Books and Periodicals	47.89			47.89
650 Supplies & Fees – Technology Related	736.97			736.97
<b>Total Supplies</b>	<b>\$1,494.36</b>	<b>\$433.66</b>		<b>\$1,928.02</b>
<b>Total 1220 Sensory Support</b>	<b>\$919,741.59</b>	<b>\$216,710.96</b>	<b>\$582.39</b>	<b>\$1,137,034.94</b>

LEA : 123467103      Souderton Area SD

Printed 1/2/2020 9:58:19 AM

General Fund (10)

1230 Emotional Support	Elementary	Secondary	Federal	Total
100 <u>Personnel Services – Salaries</u>				
100 Personnel Services – Salaries	378,353.74	218,010.79	803,680.24	1,400,044.77
<b>Total Personnel Services – Salaries</b>	<b>\$378,353.74</b>	<b>\$218,010.79</b>	<b>\$803,680.24</b>	<b>\$1,400,044.77</b>
200 <u>Personnel Services – Employee Benefits</u>				
210 Group Insurance – Contracted Provider	416.79	218.65		635.44
220 Social Security Contributions	28,310.07	15,238.01	56,941.65	100,489.73
230 PSERS Retirement Contributions	196,067.84	137,208.66	134,345.18	467,621.68
250 Unemployment Compensation	291.22	205.26		496.48
260 Workers' Compensation	3,668.03	3,077.92		6,745.95
270 Group Insurance – Self-Insurance	111,141.00	76,839.00		187,980.00
<b>Total Personnel Services – Employee Benefits</b>	<b>\$339,894.95</b>	<b>\$232,787.50</b>	<b>\$191,286.83</b>	<b>\$763,969.28</b>
300 <u>Purchased Professional and Technical Services</u>				
330 Other Professional Services	251,647.59	362,992.37	161,731.28	776,371.24
<b>Total Purchased Professional and Technical Services</b>	<b>\$251,647.59</b>	<b>\$362,992.37</b>	<b>\$161,731.28</b>	<b>\$776,371.24</b>
600 <u>Supplies</u>				
610 General Supplies	2,542.33	757.72		3,300.05
640 Books and Periodicals	194.28	2,834.70		3,028.98
650 Supplies & Fees – Technology Related	3,916.50	1,540.00		5,456.50
<b>Total Supplies</b>	<b>\$6,653.11</b>	<b>\$5,132.42</b>		<b>\$11,785.53</b>
<b>Total 1230 Emotional Support</b>	<b>\$976,549.39</b>	<b>\$818,923.08</b>	<b>\$1,156,698.35</b>	<b>\$2,952,170.82</b>

LEA : 123467103     Souderton Area SD

Printed 1/2/2020 9:58:19 AM

General Fund (10)				
1240 Academic Support	<u>Elementary</u>	<u>Secondary</u>	<u>Federal</u>	<u>Total</u>
100 <u>Personnel Services – Salaries</u>				
100 Personnel Services – Salaries	1,895,107.33	2,955,973.66		4,851,080.99
<b>Total Personnel Services – Salaries</b>	<b>\$1,895,107.33</b>	<b>\$2,955,973.66</b>		<b>\$4,851,080.99</b>
200 <u>Personnel Services – Employee Benefits</u>				
210 Group Insurance – Contracted Provider	3,559.46	5,582.00		9,141.46
220 Social Security Contributions	137,600.68	215,579.95		353,180.63
230 PSERS Retirement Contributions	631,749.38	987,277.87		1,619,027.25
250 Unemployment Compensation	644.21	844.07		1,488.28
260 Workers' Compensation	7,785.52	11,332.28		19,117.80
270 Group Insurance – Self-Insurance	266,172.00	561,792.00		827,964.00
<b>Total Personnel Services – Employee Benefits</b>	<b>\$1,047,511.25</b>	<b>\$1,782,408.17</b>		<b>\$2,829,919.42</b>
300 <u>Purchased Professional and Technical Services</u>				
330 Other Professional Services	72,481.21	238,001.98	40,392.44	350,875.63
<b>Total Purchased Professional and Technical Services</b>	<b>\$72,481.21</b>	<b>\$238,001.98</b>	<b>\$40,392.44</b>	<b>\$350,875.63</b>
500 <u>Other Purchased Services</u>				
510 Student Transportation Services		800.41		800.41
580 Travel		146.35		146.35
<b>Total Other Purchased Services</b>		<b>\$946.76</b>		<b>\$946.76</b>
600 <u>Supplies</u>				
610 General Supplies	528.71	2,222.05		2,750.76
630 Food		70.10		70.10
640 Books and Periodicals	10,994.23	9,063.62		20,057.85
650 Supplies & Fees – Technology Related	2,433.94	3,125.00		5,558.94
<b>Total Supplies</b>	<b>\$13,956.88</b>	<b>\$14,480.77</b>		<b>\$28,437.65</b>
<b>Total 1240 Academic Support</b>	<b>\$3,029,056.67</b>	<b>\$4,991,811.34</b>	<b>\$40,392.44</b>	<b>\$8,061,260.45</b>

LEA : 123467103      Souderton Area SD

Printed 1/2/2020 9:58:19 AM

General Fund (10)				
1241 Learning Support – Public	<u>Elementary</u>	<u>Secondary</u>	<u>Federal</u>	<u>Total</u>
100 <u>Personnel Services – Salaries</u>				
100 Personnel Services – Salaries	1,668,976.53	2,656,254.68		4,325,231.21
<b>Total Personnel Services – Salaries</b>	<b>\$1,668,976.53</b>	<b>\$2,656,254.68</b>		<b>\$4,325,231.21</b>
200 <u>Personnel Services – Employee Benefits</u>				
210 Group Insurance – Contracted Provider	3,133.56	5,018.14		8,151.70
220 Social Security Contributions	122,040.74	193,186.50		315,227.24
230 PSERS Retirement Contributions	556,153.93	887,081.92		1,443,235.85
250 Unemployment Compensation	592.35	784.56		1,376.91
260 Workers' Compensation	6,223.20	9,910.41		16,133.61
270 Group Insurance – Self-Insurance	231,628.00	523,244.00		754,872.00
<b>Total Personnel Services – Employee Benefits</b>	<b>\$919,771.78</b>	<b>\$1,619,225.53</b>		<b>\$2,538,997.31</b>
300 <u>Purchased Professional and Technical Services</u>				
330 Other Professional Services	72,481.21	237,931.24	40,392.44	350,804.89
<b>Total Purchased Professional and Technical Services</b>	<b>\$72,481.21</b>	<b>\$237,931.24</b>	<b>\$40,392.44</b>	<b>\$350,804.89</b>
500 <u>Other Purchased Services</u>				
510 Student Transportation Services		493.19		493.19
580 Travel		146.35		146.35
<b>Total Other Purchased Services</b>		<b>\$639.54</b>		<b>\$639.54</b>
600 <u>Supplies</u>				
610 General Supplies	528.71	2,222.05		2,750.76
630 Food		70.10		70.10
640 Books and Periodicals	10,994.23	9,063.62		20,057.85
650 Supplies & Fees – Technology Related	2,013.94	3,125.00		5,138.94
<b>Total Supplies</b>	<b>\$13,536.88</b>	<b>\$14,480.77</b>		<b>\$28,017.65</b>
<b>Total 1241 Learning Support – Public</b>	<b>\$2,674,766.40</b>	<b>\$4,528,531.76</b>	<b>\$40,392.44</b>	<b>\$7,243,690.60</b>

LEA : 123467103      Souderton Area SD

Printed 1/2/2020 9:58:19 AM

General Fund (10)				
1243 Gifted Support	<u>Elementary</u>	<u>Secondary</u>	<u>Federal</u>	<u>Total</u>
100 <u>Personnel Services – Salaries</u>				
100 Personnel Services – Salaries	226,130.80	299,718.98		525,849.78
<b>Total Personnel Services – Salaries</b>	<b>\$226,130.80</b>	<b>\$299,718.98</b>		<b>\$525,849.78</b>
200 <u>Personnel Services – Employee Benefits</u>				
210 Group Insurance – Contracted Provider	425.90	563.86		989.76
220 Social Security Contributions	15,559.94	22,393.45		37,953.39
230 PSERS Retirement Contributions	75,595.45	100,195.95		175,791.40
250 Unemployment Compensation	51.86	59.51		111.37
260 Workers' Compensation	1,562.32	1,421.87		2,984.19
270 Group Insurance – Self-Insurance	34,544.00	38,548.00		73,092.00
<b>Total Personnel Services – Employee Benefits</b>	<b>\$127,739.47</b>	<b>\$163,182.64</b>		<b>\$290,922.11</b>
300 <u>Purchased Professional and Technical Services</u>				
330 Other Professional Services		70.74		70.74
<b>Total Purchased Professional and Technical Services</b>		<b>\$70.74</b>		<b>\$70.74</b>
500 <u>Other Purchased Services</u>				
510 Student Transportation Services		307.22		307.22
<b>Total Other Purchased Services</b>		<b>\$307.22</b>		<b>\$307.22</b>
600 <u>Supplies</u>				
650 Supplies & Fees – Technology Related	420.00			420.00
<b>Total Supplies</b>	<b>\$420.00</b>			<b>\$420.00</b>
<b>Total 1243 Gifted Support</b>	<b>\$354,290.27</b>	<b>\$463,279.58</b>		<b>\$817,569.85</b>

LEA : 123467103     Souderton Area SD

Printed 1/2/2020 9:58:19 AM

General Fund (10)

1260 Physical Support	<u>Elementary</u>	<u>Secondary</u>	<u>Federal</u>	<u>Total</u>
<b>100 <u>Personnel Services – Salaries</u></b>				
100 Personnel Services – Salaries	204,175.67	81,546.33		285,722.00
<b>Total Personnel Services – Salaries</b>	<b>\$204,175.67</b>	<b>\$81,546.33</b>		<b>\$285,722.00</b>
<b>200 <u>Personnel Services – Employee Benefits</u></b>				
210 Group Insurance – Contracted Provider	390.54	152.24		542.78
220 Social Security Contributions	15,015.92	5,961.07		20,976.99
230 PSERS Retirement Contributions	68,256.00	27,260.96		95,516.96
250 Unemployment Compensation	69.84	16.80		86.64
260 Workers' Compensation	41.00			41.00
<b>Total Personnel Services – Employee Benefits</b>	<b>\$83,773.30</b>	<b>\$33,391.07</b>		<b>\$117,164.37</b>
<b>Total 1260 Physical Support</b>	<b>\$287,948.97</b>	<b>\$114,937.40</b>		<b>\$402,886.37</b>

LEA : 123467103     Souderton Area SD

Printed 1/2/2020 9:58:19 AM

General Fund (10)				
1270 Multi-Handicapped Support	<u>Elementary</u>	<u>Secondary</u>	<u>Federal</u>	<u>Total</u>
100 <u>Personnel Services – Salaries</u>				
100 Personnel Services – Salaries	155,162.14	94,913.16		250,075.30
<b>Total Personnel Services – Salaries</b>	<b>\$155,162.14</b>	<b>\$94,913.16</b>		<b>\$250,075.30</b>
200 <u>Personnel Services – Employee Benefits</u>				
210 Group Insurance – Contracted Provider	291.16	168.90		460.06
220 Social Security Contributions	11,524.99	6,748.12		18,273.11
230 PSERS Retirement Contributions	51,870.65	31,614.08		83,484.73
250 Unemployment Compensation	54.78	39.43		94.21
260 Workers' Compensation	586.48	361.09		947.57
270 Group Insurance – Self-Insurance	21,811.00	1,587.00		23,398.00
<b>Total Personnel Services – Employee Benefits</b>	<b>\$86,139.06</b>	<b>\$40,518.62</b>		<b>\$126,657.68</b>
300 <u>Purchased Professional and Technical Services</u>				
330 Other Professional Services	83,475.00	129,611.24	29,481.25	242,567.49
<b>Total Purchased Professional and Technical Services</b>	<b>\$83,475.00</b>	<b>\$129,611.24</b>	<b>\$29,481.25</b>	<b>\$242,567.49</b>
500 <u>Other Purchased Services</u>				
510 Student Transportation Services	530.00	369.00		899.00
<b>Total Other Purchased Services</b>	<b>\$530.00</b>	<b>\$369.00</b>		<b>\$899.00</b>
600 <u>Supplies</u>				
610 General Supplies	657.33	1,268.62		1,925.95
640 Books and Periodicals	45.99			45.99
650 Supplies & Fees – Technology Related	75.00	145.00		220.00
<b>Total Supplies</b>	<b>\$778.32</b>	<b>\$1,413.62</b>		<b>\$2,191.94</b>
<b>Total 1270 Multi-Handicapped Support</b>	<b>\$326,084.52</b>	<b>\$266,825.64</b>	<b>\$29,481.25</b>	<b>\$622,391.41</b>

LEA : 123467103      Souderton Area SD

Printed 1/2/2020 9:58:19 AM

General Fund (10)

1290 Special Programs - Other Support

	Elementary	Secondary	Federal	Total
<b>100 <u>Personnel Services – Salaries</u></b>				
100 Personnel Services – Salaries	276,034.16	307,586.50		583,620.66
<b>Total Personnel Services – Salaries</b>	<b>\$276,034.16</b>	<b>\$307,586.50</b>		<b>\$583,620.66</b>
<b>200 <u>Personnel Services – Employee Benefits</u></b>				
210 Group Insurance – Contracted Provider	1,091.41	1,498.65		2,590.06
220 Social Security Contributions	20,211.19	22,507.25		42,718.44
230 PSERS Retirement Contributions	90,809.84	100,910.69		191,720.53
250 Unemployment Compensation	60.81	82.95		143.76
260 Workers' Compensation	1,120.86	1,252.50		2,373.36
270 Group Insurance – Self-Insurance	73,168.00	36,915.00		110,083.00
291 Other Retirement Plans	1,575.00	4,333.35		5,908.35
<b>Total Personnel Services – Employee Benefits</b>	<b>\$188,037.11</b>	<b>\$167,500.39</b>		<b>\$355,537.50</b>
<b>300 <u>Purchased Professional and Technical Services</u></b>				
322 Professional Educational Services – Ius	370,000.24	312,210.20		682,210.44
323 Professional Educational Services – Other Educational Agencies	17,250.00	27,791.40		45,041.40
329 Professional Educational Services – Other		250.00		250.00
330 Other Professional Services	255,462.56	171,730.68	73,101.33	500,294.57
<b>Total Purchased Professional and Technical Services</b>	<b>\$642,712.80</b>	<b>\$511,982.28</b>	<b>\$73,101.33</b>	<b>\$1,227,796.41</b>
<b>500 <u>Other Purchased Services</u></b>				
510 Student Transportation Services	830.00	780.54		1,610.54
550 Printing and Binding	74.27	89.04		163.31
561 Tuition To Other School Districts Within the State	1,763.97	57,773.11		59,537.08
562 Tuition To Pennsylvania Charter Schools	872,054.69	435,365.20		1,307,419.89
563 Tuition To Nonpublic Schools	508,644.10	1,991,709.79		2,500,353.89
566 Tuition To Institutions of Higher Education and Technical Institutes		6,000.00		6,000.00
567 Tuition To Approved Private Schools (APS) and PA Chartered Schools for the Deaf and Blind	144,620.00	194,832.41		339,452.41
568 Tuition To Private Residential Rehabilitative Institutions (PRRI) [In-State] and Detention Centers		2,041.13		2,041.13
580 Travel	1,622.72	2,049.46		3,672.18
594 IU Payment By Withholding for Institutionalized Children's Programs – Special Classes	4,381.71			4,381.71
<b>Total Other Purchased Services</b>	<b>\$1,533,991.46</b>	<b>\$2,690,640.68</b>		<b>\$4,224,632.14</b>
<b>600 <u>Supplies</u></b>				
610 General Supplies	924.80	3,096.28	3,175.00	7,196.08
640 Books and Periodicals		129.24		129.24
650 Supplies & Fees – Technology Related	10,167.00	10,053.13		20,220.13
<b>Total Supplies</b>	<b>\$11,091.80</b>	<b>\$13,278.65</b>	<b>\$3,175.00</b>	<b>\$27,545.45</b>
<b>700 <u>Property</u></b>				
752 Capital Equipment – Original and Additional		2,621.25	6,068.37	8,689.62
<b>Total Property</b>		<b>\$2,621.25</b>	<b>\$6,068.37</b>	<b>\$8,689.62</b>
<b>800 <u>Other Objects</u></b>				
810 Dues and Fees		25.57		25.57
820 Claims and Judgments Against the LEA		115,105.99		115,105.99
<b>Total Other Objects</b>		<b>\$115,131.56</b>		<b>\$115,131.56</b>
<b>Total 1290 Special Programs - Other Support</b>	<b>\$2,651,867.33</b>	<b>\$3,808,741.31</b>	<b>\$82,344.70</b>	<b>\$6,542,953.34</b>



LEA : 123467103     Souderton Area SD

Printed 1/2/2020 9:58:19 AM

General Fund (10)

1300 Vocational Education

500 Other Purchased Services

	<u>Elementary</u>	<u>Secondary</u>	<u>Federal</u>	<u>Total</u>
564 Tuition To Career and Technology Centers		2,043,097.38		2,043,097.38
<b>Total Other Purchased Services</b>		<b>\$2,043,097.38</b>		<b>\$2,043,097.38</b>
<b>Total 1300 Vocational Education</b>		<b>\$2,043,097.38</b>		<b>\$2,043,097.38</b>

LEA : 123467103      Souderton Area SD

Printed 1/2/2020 9:58:19 AM

<b>General Fund (10)</b>				
<b>1400 Other Instructional Programs – Elementary / Secondary</b>	<b><u>Elementary</u></b>	<b><u>Secondary</u></b>	<b><u>Federal</u></b>	<b><u>Total</u></b>
<b>100 <u>Personnel Services – Salaries</u></b>				
100 Personnel Services – Salaries	239,451.89	8,840.00		248,291.89
<b>Total Personnel Services – Salaries</b>	<b>\$239,451.89</b>	<b>\$8,840.00</b>		<b>\$248,291.89</b>
<b>200 <u>Personnel Services – Employee Benefits</u></b>				
210 Group Insurance – Contracted Provider	492.69			492.69
220 Social Security Contributions	17,281.10	640.07		17,921.17
230 PSERS Retirement Contributions	34,658.06	2,814.66		37,472.72
250 Unemployment Compensation	189.70	5.76		195.46
260 Workers' Compensation	931.96	44.37		976.33
291 Other Retirement Plans	1,800.00			1,800.00
<b>Total Personnel Services – Employee Benefits</b>	<b>\$55,353.51</b>	<b>\$3,504.86</b>		<b>\$58,858.37</b>
<b>300 <u>Purchased Professional and Technical Services</u></b>				
322 Professional Educational Services – Ius		69,269.13		69,269.13
323 Professional Educational Services – Other Educational Agencies	638.50	214,769.29		215,407.79
390 Other Purchased Professional and Technical Services	30,337.00			30,337.00
<b>Total Purchased Professional and Technical Services</b>	<b>\$30,975.50</b>	<b>\$284,038.42</b>		<b>\$315,013.92</b>
<b>500 <u>Other Purchased Services</u></b>				
510 Student Transportation Services	11,677.00			11,677.00
530 Communications	869.72			869.72
550 Printing and Binding	3,723.73			3,723.73
561 Tuition To Other School Districts Within the State			30,225.07	30,225.07
580 Travel		104.64		104.64
599 Other Miscellaneous Purchased Services	15,351.33			15,351.33
<b>Total Other Purchased Services</b>	<b>\$31,621.78</b>	<b>\$104.64</b>	<b>\$30,225.07</b>	<b>\$61,951.49</b>
<b>600 <u>Supplies</u></b>				
610 General Supplies	6,179.83			6,179.83
630 Food	26,751.97			26,751.97
<b>Total Supplies</b>	<b>\$32,931.80</b>			<b>\$32,931.80</b>
<b>800 <u>Other Objects</u></b>				
810 Dues and Fees	11,175.48			11,175.48
<b>Total Other Objects</b>	<b>\$11,175.48</b>			<b>\$11,175.48</b>
<b>Total 1400 Other Instructional Programs – Elementary / Secondary</b>	<b>\$401,509.96</b>	<b>\$296,487.92</b>	<b>\$30,225.07</b>	<b>\$728,222.95</b>

LEA : 123467103     Souderton Area SD

Printed 1/2/2020 9:58:19 AM

General Fund (10)

1430 Homebound Instruction	Elementary	Secondary	Federal	Total
<b>100 <u>Personnel Services – Salaries</u></b>				
100 Personnel Services – Salaries	1,440.00	8,840.00		10,280.00
<b>Total Personnel Services – Salaries</b>	<b>\$1,440.00</b>	<b>\$8,840.00</b>		<b>\$10,280.00</b>
<b>200 <u>Personnel Services – Employee Benefits</u></b>				
220 Social Security Contributions	110.16	640.07		750.23
230 PSERS Retirement Contributions	481.39	2,814.66		3,296.05
250 Unemployment Compensation	0.61	5.76		6.37
260 Workers' Compensation	8.42	44.37		52.79
<b>Total Personnel Services – Employee Benefits</b>	<b>\$600.58</b>	<b>\$3,504.86</b>		<b>\$4,105.44</b>
<b>300 <u>Purchased Professional and Technical Services</u></b>				
323 Professional Educational Services – Other Educational Agencies	638.50	214,769.29		215,407.79
<b>Total Purchased Professional and Technical Services</b>	<b>\$638.50</b>	<b>\$214,769.29</b>		<b>\$215,407.79</b>
<b>500 <u>Other Purchased Services</u></b>				
580 Travel		104.64		104.64
<b>Total Other Purchased Services</b>		<b>\$104.64</b>		<b>\$104.64</b>
<b>Total 1430 Homebound Instruction</b>	<b>\$2,679.08</b>	<b>\$227,218.79</b>		<b>\$229,897.87</b>

LEA : 123467103     Souderton Area SD

Printed 1/2/2020 9:58:19 AM

General Fund (10)

1440 Alternative Regular Education Programs	<u>Elementary</u>	<u>Secondary</u>	<u>Federal</u>	<u>Total</u>
300 <u>Purchased Professional and Technical Services</u>				
322 Professional Educational Services – lus		69,269.13		69,269.13
Total Purchased Professional and Technical Services		\$69,269.13		\$69,269.13
500 <u>Other Purchased Services</u>				
561 Tuition To Other School Districts Within the State			30,225.07	30,225.07
Total Other Purchased Services			\$30,225.07	\$30,225.07
Total 1440 Alternative Regular Education Programs		\$69,269.13	\$30,225.07	\$99,494.20

LEA : 123467103     Souderton Area SD

Printed 1/2/2020 9:58:19 AM

General Fund (10)

1441 Adjudicated / Court-Placed Programs	<u>Elementary</u>	<u>Secondary</u>	<u>Federal</u>	<u>Total</u>
300 <u>Purchased Professional and Technical Services</u>				
322 Professional Educational Services – lus		69,269.13		69,269.13
Total Purchased Professional and Technical Services		\$69,269.13		\$69,269.13
500 <u>Other Purchased Services</u>				
561 Tuition To Other School Districts Within the State			30,225.07	30,225.07
Total Other Purchased Services			\$30,225.07	\$30,225.07
Total 1441 Adjudicated / Court-Placed Programs		\$69,269.13	\$30,225.07	\$99,494.20

LEA : 123467103      Souderton Area SD

Printed 1/2/2020 9:58:19 AM

General Fund (10)				
1490 Additional Other Instructional Programs	<u>Elementary</u>	<u>Secondary</u>	<u>Federal</u>	<u>Total</u>
100 <u>Personnel Services – Salaries</u>				
100 Personnel Services – Salaries	238,011.89			238,011.89
<b>Total Personnel Services – Salaries</b>	<b>\$238,011.89</b>			<b>\$238,011.89</b>
200 <u>Personnel Services – Employee Benefits</u>				
210 Group Insurance – Contracted Provider	492.69			492.69
220 Social Security Contributions	17,170.94			17,170.94
230 PSERS Retirement Contributions	34,176.67			34,176.67
250 Unemployment Compensation	189.09			189.09
260 Workers' Compensation	923.54			923.54
291 Other Retirement Plans	1,800.00			1,800.00
<b>Total Personnel Services – Employee Benefits</b>	<b>\$54,752.93</b>			<b>\$54,752.93</b>
300 <u>Purchased Professional and Technical Services</u>				
390 Other Purchased Professional and Technical Services	30,337.00			30,337.00
<b>Total Purchased Professional and Technical Services</b>	<b>\$30,337.00</b>			<b>\$30,337.00</b>
500 <u>Other Purchased Services</u>				
510 Student Transportation Services	11,677.00			11,677.00
530 Communications	869.72			869.72
550 Printing and Binding	3,723.73			3,723.73
599 Other Miscellaneous Purchased Services	15,351.33			15,351.33
<b>Total Other Purchased Services</b>	<b>\$31,621.78</b>			<b>\$31,621.78</b>
600 <u>Supplies</u>				
610 General Supplies	6,179.83			6,179.83
630 Food	26,751.97			26,751.97
<b>Total Supplies</b>	<b>\$32,931.80</b>			<b>\$32,931.80</b>
800 <u>Other Objects</u>				
810 Dues and Fees	11,175.48			11,175.48
<b>Total Other Objects</b>	<b>\$11,175.48</b>			<b>\$11,175.48</b>
<b>Total 1490 Additional Other Instructional Programs</b>	<b>\$398,830.88</b>			<b>\$398,830.88</b>

LEA : 123467103     Souderton Area SD

Printed 1/2/2020 9:58:19 AM

General Fund (10)

1500 Nonpublic School Programs

	<u>Elementary</u>	<u>Secondary</u>	<u>Federal</u>	<u>Total</u>
<b>100 <u>Personnel Services – Salaries</u></b>				
100 Personnel Services – Salaries			1,250.07	1,250.07
<b>Total Personnel Services – Salaries</b>			<b>\$1,250.07</b>	<b>\$1,250.07</b>
<b>200 <u>Personnel Services – Employee Benefits</u></b>				
220 Social Security Contributions			72.29	72.29
230 PSERS Retirement Contributions			320.60	320.60
<b>Total Personnel Services – Employee Benefits</b>			<b>\$392.89</b>	<b>\$392.89</b>
<b>300 <u>Purchased Professional and Technical Services</u></b>				
322 Professional Educational Services – Ius			3,185.00	3,185.00
<b>Total Purchased Professional and Technical Services</b>			<b>\$3,185.00</b>	<b>\$3,185.00</b>
<b>Total 1500 Nonpublic School Programs</b>			<b>\$4,827.96</b>	<b>\$4,827.96</b>

LEA : 123467103     Souderton Area SD

Printed 1/2/2020 9:58:19 AM

General Fund (10)

1600 Adult Education Programs

	<u>Elementary</u>	<u>Secondary</u>	<u>Federal</u>	<u>Total</u>
<b>100 <u>Personnel Services – Salaries</u></b>				
100 Personnel Services – Salaries				76,987.50
<b>Total Personnel Services – Salaries</b>				<b>\$76,987.50</b>
<b>200 <u>Personnel Services – Employee Benefits</u></b>				
210 Group Insurance – Contracted Provider				289.65
220 Social Security Contributions				5,737.31
230 PSERS Retirement Contributions				19,164.59
240 Tuition Reimbursement				51.74
250 Unemployment Compensation				309.55
291 Other Retirement Plans				1,800.00
<b>Total Personnel Services – Employee Benefits</b>				<b>\$27,352.84</b>
<b>300 <u>Purchased Professional and Technical Services</u></b>				
330 Other Professional Services				37,732.00
<b>Total Purchased Professional and Technical Services</b>				<b>\$37,732.00</b>
<b>500 <u>Other Purchased Services</u></b>				
530 Communications				425.00
550 Printing and Binding				25,712.40
599 Other Miscellaneous Purchased Services				11,274.65
<b>Total Other Purchased Services</b>				<b>\$37,412.05</b>
<b>600 <u>Supplies</u></b>				
610 General Supplies				1,354.95
<b>Total Supplies</b>				<b>\$1,354.95</b>
<b>800 <u>Other Objects</u></b>				
810 Dues and Fees				4,469.70
<b>Total Other Objects</b>				<b>\$4,469.70</b>
<b>Total 1600 Adult Education Programs</b>				<b>\$185,309.04</b>



LEA : 123467103      Souderton Area SD

Printed 1/2/2020 9:58:27 AM

General Fund (10)

2000 Support Services

Total

100	<u>Personnel Services – Salaries</u>	
100	Personnel Services – Salaries	13,338,458.65
<b>Total Personnel Services – Salaries</b>		<b>\$13,338,458.65</b>
200	<u>Personnel Services – Employee Benefits</u>	
210	Group Insurance – Contracted Provider	40,901.21
220	Social Security Contributions	962,254.34
230	PSERS Retirement Contributions	4,352,589.98
240	Tuition Reimbursement	200,513.50
250	Unemployment Compensation	3,569.69
260	Workers' Compensation	50,722.11
270	Group Insurance – Self-Insurance	2,309,597.00
291	Other Retirement Plans	272,844.67
<b>Total Personnel Services – Employee Benefits</b>		<b>\$8,192,992.50</b>
300	<u>Purchased Professional and Technical Services</u>	
329	Professional Educational Services – Other	8,665.75
330	Other Professional Services	840,489.56
340	Technical Services	2,200.00
350	Security / Safety Services	35,601.64
360	Employee Training and Development Services	51,597.40
<b>Total Purchased Professional and Technical Services</b>		<b>\$938,554.35</b>
400	<u>Purchased Property Services</u>	
410	Cleaning Services	251,935.94
420	Utility Services	152,384.98
430	Repairs and Maintenance Services	534,747.10
440	Rentals	121,606.90
460	Extermination Services	5,161.90
<b>Total Purchased Property Services</b>		<b>\$1,065,836.82</b>
500	<u>Other Purchased Services</u>	
510	Student Transportation Services	1,240.00
511	Student Transportation Services from Another LEA Within the State	3,304.80
513	Contracted Carriers	7,248,381.38
516	Student Transportation Services From the IU	812,762.75
519	Student Transportation Services From Other Sources	9,756.50
520	Insurance – General	66,040.00
522	Automotive Liability Insurance	17,797.00
523	General Property and Liability Insurance	157,679.00
530	Communications	570,895.27
549	Other Advertising/Public Relations	3,983.87
550	Printing and Binding	47,835.01
580	Travel	25,563.01
595	IU Payments By Withholding	81,987.40
<b>Total Other Purchased Services</b>		<b>\$9,047,225.99</b>
600	<u>Supplies</u>	
610	General Supplies	576,467.77

LEA : 123467103     Souderton Area SD

Printed 1/2/2020 9:58:27 AM

General Fund (10)

2000 Support Services

Total

600 <u>Supplies</u>	
620 Energy	1,286,915.61
630 Food	7,985.92
640 Books and Periodicals	35,320.54
650 Supplies & Fees – Technology Related	822,918.59
<b>Total Supplies</b>	<b>\$2,729,608.43</b>
700 <u>Property</u>	
752 Capital Equipment – Original and Additional	28,665.82
762 Capitalized Equipment - Replacement	79,847.76
766 Capitalized Technology Equipment – Replacement	22,145.79
768 Capitalized Technology Software - Replacement	17,977.94
<b>Total Property</b>	<b>\$148,637.31</b>
800 <u>Other Objects</u>	
810 Dues and Fees	59,943.23
890 Miscellaneous Expenditures	92,780.00
<b>Total Other Objects</b>	<b>\$152,723.23</b>
<b>Total 2000 Support Services</b>	<b>\$35,614,037.28</b>

LEA : 123467103     Souderton Area SD

Printed 1/2/2020 9:58:27 AM

General Fund (10)

2100 Support Services – Students	Elementary	Secondary	Federal	Total
100 <u>Personnel Services – Salaries</u>				
100 Personnel Services – Salaries	920,275.82	1,267,655.80	56,860.00	2,617,573.63
<b>Total Personnel Services – Salaries</b>	<b>\$920,275.82</b>	<b>\$1,267,655.80</b>	<b>\$56,860.00</b>	<b>\$2,617,573.63</b>
200 <u>Personnel Services – Employee Benefits</u>				
210 Group Insurance – Contracted Provider	2,165.75	2,694.43		5,557.45
220 Social Security Contributions	67,172.05	92,412.14	4,025.71	190,557.78
230 PSERS Retirement Contributions	307,188.09	432,540.95	9,504.15	873,793.93
250 Unemployment Compensation	227.59	315.09		703.79
260 Workers' Compensation	3,440.40	5,145.50		9,970.78
270 Group Insurance – Self-Insurance	131,607.00	169,658.00		388,285.00
291 Other Retirement Plans	56,758.33	56,758.33		113,516.66
<b>Total Personnel Services – Employee Benefits</b>	<b>\$568,559.21</b>	<b>\$759,524.44</b>	<b>\$13,529.86</b>	<b>\$1,582,385.39</b>
300 <u>Purchased Professional and Technical Services</u>				
329 Professional Educational Services – Other	242.00	242.00		484.00
330 Other Professional Services	12,449.35	11,908.78		483,686.25
<b>Total Purchased Professional and Technical Services</b>	<b>\$12,691.35</b>	<b>\$12,150.78</b>		<b>\$484,170.25</b>
500 <u>Other Purchased Services</u>				
510 Student Transportation Services	1,240.00			1,240.00
530 Communications	142.27	67.27		209.54
550 Printing and Binding	76.00	76.00		152.00
580 Travel	586.87	467.90		2,608.56
<b>Total Other Purchased Services</b>	<b>\$2,045.14</b>	<b>\$611.17</b>		<b>\$4,210.10</b>
600 <u>Supplies</u>				
610 General Supplies	18,782.17	194.10	220.00	19,230.96
630 Food	92.00	230.00		322.00
640 Books and Periodicals	851.05	140.49		991.54
650 Supplies & Fees – Technology Related		12,209.90		12,209.90
<b>Total Supplies</b>	<b>\$19,725.22</b>	<b>\$12,774.49</b>	<b>\$220.00</b>	<b>\$32,754.40</b>
800 <u>Other Objects</u>				
810 Dues and Fees	687.50	687.50		1,375.00
890 Miscellaneous Expenditures		92,780.00		92,780.00
<b>Total Other Objects</b>	<b>\$687.50</b>	<b>\$93,467.50</b>		<b>\$94,155.00</b>
<b>Total 2100 Support Services – Students</b>	<b>\$1,523,984.24</b>	<b>\$2,146,184.18</b>	<b>\$70,609.86</b>	<b>\$4,815,248.77</b>

LEA : 123467103     Souderton Area SD

Printed 1/2/2020 9:58:27 AM

General Fund (10)

2110 Supervision of Student Services	Elementary	Secondary	Federal	Total
100 <u>Personnel Services – Salaries</u>				
100 Personnel Services – Salaries	98,428.66	98,428.66		196,857.32
<b>Total Personnel Services – Salaries</b>	<b>\$98,428.66</b>	<b>\$98,428.66</b>		<b>\$196,857.32</b>
200 <u>Personnel Services – Employee Benefits</u>				
210 Group Insurance – Contracted Provider	611.71	611.71		1,223.42
220 Social Security Contributions	7,356.62	7,356.62		14,713.24
230 PSERS Retirement Contributions	32,444.81	32,444.81		64,889.62
250 Unemployment Compensation	19.54	19.54		39.08
260 Workers' Compensation	368.02	368.02		736.04
270 Group Insurance – Self-Insurance	15,725.00	15,725.00		31,450.00
291 Other Retirement Plans	56,758.33	56,758.33		113,516.66
<b>Total Personnel Services – Employee Benefits</b>	<b>\$113,284.03</b>	<b>\$113,284.03</b>		<b>\$226,568.06</b>
300 <u>Purchased Professional and Technical Services</u>				
329 Professional Educational Services – Other	242.00	242.00		484.00
<b>Total Purchased Professional and Technical Services</b>	<b>\$242.00</b>	<b>\$242.00</b>		<b>\$484.00</b>
500 <u>Other Purchased Services</u>				
530 Communications	67.27	67.27		134.54
550 Printing and Binding	76.00	76.00		152.00
580 Travel	467.90	467.90		935.80
<b>Total Other Purchased Services</b>	<b>\$611.17</b>	<b>\$611.17</b>		<b>\$1,222.34</b>
600 <u>Supplies</u>				
610 General Supplies	17.09	17.09		34.18
630 Food	70.35	70.35		140.70
640 Books and Periodicals	29.10	29.10		58.20
<b>Total Supplies</b>	<b>\$116.54</b>	<b>\$116.54</b>		<b>\$233.08</b>
800 <u>Other Objects</u>				
810 Dues and Fees	687.50	687.50		1,375.00
<b>Total Other Objects</b>	<b>\$687.50</b>	<b>\$687.50</b>		<b>\$1,375.00</b>
<b>Total 2110 Supervision of Student Services</b>	<b>\$213,369.90</b>	<b>\$213,369.90</b>		<b>\$426,739.80</b>

LEA : 123467103     Souderton Area SD

Printed 1/2/2020 9:58:27 AM

General Fund (10)

2111 Supervision of Student Services – Head of Component

	<u>Elementary</u>	<u>Secondary</u>	<u>Federal</u>	<u>Total</u>
<b>100 <u>Personnel Services – Salaries</u></b>				
100 Personnel Services – Salaries	98,428.66	98,428.66		196,857.32
<b>Total Personnel Services – Salaries</b>	<b>\$98,428.66</b>	<b>\$98,428.66</b>		<b>\$196,857.32</b>
<b>200 <u>Personnel Services – Employee Benefits</u></b>				
210 Group Insurance – Contracted Provider	611.71	611.71		1,223.42
220 Social Security Contributions	7,356.62	7,356.62		14,713.24
230 PSERS Retirement Contributions	32,444.81	32,444.81		64,889.62
250 Unemployment Compensation	19.54	19.54		39.08
260 Workers' Compensation	368.02	368.02		736.04
270 Group Insurance – Self-Insurance	15,725.00	15,725.00		31,450.00
291 Other Retirement Plans	56,758.33	56,758.33		113,516.66
<b>Total Personnel Services – Employee Benefits</b>	<b>\$113,284.03</b>	<b>\$113,284.03</b>		<b>\$226,568.06</b>
<b>300 <u>Purchased Professional and Technical Services</u></b>				
329 Professional Educational Services – Other	242.00	242.00		484.00
<b>Total Purchased Professional and Technical Services</b>	<b>\$242.00</b>	<b>\$242.00</b>		<b>\$484.00</b>
<b>500 <u>Other Purchased Services</u></b>				
530 Communications	67.27	67.27		134.54
550 Printing and Binding	76.00	76.00		152.00
580 Travel	467.90	467.90		935.80
<b>Total Other Purchased Services</b>	<b>\$611.17</b>	<b>\$611.17</b>		<b>\$1,222.34</b>
<b>600 <u>Supplies</u></b>				
610 General Supplies	17.09	17.09		34.18
630 Food	70.35	70.35		140.70
640 Books and Periodicals	29.10	29.10		58.20
<b>Total Supplies</b>	<b>\$116.54</b>	<b>\$116.54</b>		<b>\$233.08</b>
<b>800 <u>Other Objects</u></b>				
810 Dues and Fees	687.50	687.50		1,375.00
<b>Total Other Objects</b>	<b>\$687.50</b>	<b>\$687.50</b>		<b>\$1,375.00</b>
<b>Total 2111 Supervision of Student Services – Head of Component</b>	<b>\$213,369.90</b>	<b>\$213,369.90</b>		<b>\$426,739.80</b>

LEA : 123467103     Souderton Area SD

Printed 1/2/2020 9:58:27 AM

General Fund (10)

2120 Guidance Services	Elementary	Secondary	Federal	Total
100 <u>Personnel Services – Salaries</u>				
100 Personnel Services – Salaries	443,859.57	936,870.48		1,380,730.05
<b>Total Personnel Services – Salaries</b>	<b>\$443,859.57</b>	<b>\$936,870.48</b>		<b>\$1,380,730.05</b>
200 <u>Personnel Services – Employee Benefits</u>				
210 Group Insurance – Contracted Provider	842.26	1,643.65		2,485.91
220 Social Security Contributions	31,978.80	68,588.72		100,567.52
230 PSERS Retirement Contributions	148,382.13	312,915.03		461,297.16
250 Unemployment Compensation	112.24	233.72		345.96
260 Workers' Compensation	1,659.57	3,601.30		5,260.87
270 Group Insurance – Self-Insurance	73,708.00	132,635.00		206,343.00
<b>Total Personnel Services – Employee Benefits</b>	<b>\$256,683.00</b>	<b>\$519,617.42</b>		<b>\$776,300.42</b>
500 <u>Other Purchased Services</u>				
510 Student Transportation Services	1,240.00			1,240.00
<b>Total Other Purchased Services</b>	<b>\$1,240.00</b>			<b>\$1,240.00</b>
600 <u>Supplies</u>				
610 General Supplies	542.22	177.01		719.23
630 Food	21.65	159.65		181.30
640 Books and Periodicals	576.66	111.39		688.05
650 Supplies & Fees – Technology Related		12,209.90		12,209.90
<b>Total Supplies</b>	<b>\$1,140.53</b>	<b>\$12,657.95</b>		<b>\$13,798.48</b>
800 <u>Other Objects</u>				
890 Miscellaneous Expenditures		92,780.00		92,780.00
<b>Total Other Objects</b>		<b>\$92,780.00</b>		<b>\$92,780.00</b>
<b>Total 2120 Guidance Services</b>	<b>\$702,923.10</b>	<b>\$1,561,925.85</b>		<b>\$2,264,848.95</b>

LEA : 123467103      Souderton Area SD

Printed 1/2/2020 9:58:27 AM

General Fund (10)				
2130 Attendance Services				
	<u>Elementary</u>	<u>Secondary</u>	<u>Federal</u>	<u>Total</u>
100 <u>Personnel Services – Salaries</u>				
100 Personnel Services – Salaries				372,782.01
Total Personnel Services – Salaries				\$372,782.01
200 <u>Personnel Services – Employee Benefits</u>				
210 Group Insurance – Contracted Provider				697.27
220 Social Security Contributions				26,947.88
230 PSERS Retirement Contributions				124,560.74
250 Unemployment Compensation				161.11
260 Workers' Compensation				1,384.88
270 Group Insurance – Self-Insurance				87,020.00
Total Personnel Services – Employee Benefits				\$240,771.88
500 <u>Other Purchased Services</u>				
580 Travel				1,553.79
Total Other Purchased Services				\$1,553.79
600 <u>Supplies</u>				
610 General Supplies				34.69
Total Supplies				\$34.69
Total 2130 Attendance Services				\$615,142.37

LEA : 123467103     Souderton Area SD

Printed 1/2/2020 9:58:27 AM

General Fund (10)

2140 Psychological Services	Elementary	Secondary	Federal	Total
100 <u>Personnel Services – Salaries</u>				
100 Personnel Services – Salaries	377,987.59	232,356.66	56,860.00	667,204.25
<b>Total Personnel Services – Salaries</b>	<b>\$377,987.59</b>	<b>\$232,356.66</b>	<b>\$56,860.00</b>	<b>\$667,204.25</b>
200 <u>Personnel Services – Employee Benefits</u>				
210 Group Insurance – Contracted Provider	711.78	439.07		1,150.85
220 Social Security Contributions	27,836.63	16,466.80	4,025.71	48,329.14
230 PSERS Retirement Contributions	126,361.15	87,181.11	9,504.15	223,046.41
250 Unemployment Compensation	95.81	61.83		157.64
260 Workers' Compensation	1,412.81	1,176.18		2,588.99
270 Group Insurance – Self-Insurance	42,174.00	21,298.00		63,472.00
<b>Total Personnel Services – Employee Benefits</b>	<b>\$198,592.18</b>	<b>\$126,622.99</b>	<b>\$13,529.86</b>	<b>\$338,745.03</b>
300 <u>Purchased Professional and Technical Services</u>				
330 Other Professional Services	12,449.35	11,908.78		24,358.13
<b>Total Purchased Professional and Technical Services</b>	<b>\$12,449.35</b>	<b>\$11,908.78</b>		<b>\$24,358.13</b>
500 <u>Other Purchased Services</u>				
530 Communications	75.00			75.00
580 Travel	118.97			118.97
<b>Total Other Purchased Services</b>	<b>\$193.97</b>			<b>\$193.97</b>
600 <u>Supplies</u>				
610 General Supplies	18,222.86			18,222.86
640 Books and Periodicals	245.29			245.29
<b>Total Supplies</b>	<b>\$18,468.15</b>			<b>\$18,468.15</b>
<b>Total 2140 Psychological Services</b>	<b>\$607,691.24</b>	<b>\$370,888.43</b>	<b>\$70,389.86</b>	<b>\$1,048,969.53</b>



LEA : 123467103     Souderton Area SD

Printed 1/2/2020 9:58:27 AM

General Fund (10)

2160 Social Work Services

Elementary                      Secondary                      Federal                      Total

300 Purchased Professional and Technical Services

330 Other Professional Services 459,328.12

**Total Purchased Professional and Technical Services \$459,328.12**

600 Supplies

610 General Supplies 220.00 220.00

**Total Supplies \$220.00 \$220.00**

**Total 2160 Social Work Services \$220.00 \$459,548.12**

LEA : 123467103     Souderton Area SD

Printed 1/2/2020 9:58:27 AM

General Fund (10)

2200 Support Services – Instructional Staff	Elementary	Secondary	Federal	Total
<b>100 Personnel Services – Salaries</b>				
100 Personnel Services – Salaries	1,135,283.98	985,301.93	90,720.07	2,211,305.98
<b>Total Personnel Services – Salaries</b>	<b>\$1,135,283.98</b>	<b>\$985,301.93</b>	<b>\$90,720.07</b>	<b>\$2,211,305.98</b>
<b>200 Personnel Services – Employee Benefits</b>				
210 Group Insurance – Contracted Provider	3,333.39	2,915.71		6,249.10
220 Social Security Contributions	82,236.21	71,676.52	6,807.68	160,720.41
230 PSERS Retirement Contributions	374,019.16	329,734.44	30,425.39	734,178.99
240 Tuition Reimbursement	101,482.00	68,788.00		170,270.00
250 Unemployment Compensation	271.44	223.82		495.26
260 Workers' Compensation	4,699.10	4,083.78	6.48	8,789.36
270 Group Insurance – Self-Insurance	183,393.50	140,161.50		323,555.00
291 Other Retirement Plans	23,883.12	24,111.70		47,994.82
<b>Total Personnel Services – Employee Benefits</b>	<b>\$773,317.92</b>	<b>\$641,695.47</b>	<b>\$37,239.55</b>	<b>\$1,452,252.94</b>
<b>300 Purchased Professional and Technical Services</b>				
330 Other Professional Services		3,190.00		3,190.00
360 Employee Training and Development Services	6,216.00	14,175.69	25,117.71	45,509.40
<b>Total Purchased Professional and Technical Services</b>	<b>\$6,216.00</b>	<b>\$17,365.69</b>	<b>\$25,117.71</b>	<b>\$48,699.40</b>
<b>400 Purchased Property Services</b>				
430 Repairs and Maintenance Services	4,936.63	5,776.69		10,713.32
440 Rentals	3,124.68	2,464.98		5,589.66
<b>Total Purchased Property Services</b>	<b>\$8,061.31</b>	<b>\$8,241.67</b>		<b>\$16,302.98</b>
<b>500 Other Purchased Services</b>				
530 Communications	500.00			500.00
550 Printing and Binding	2,208.15	731.88		2,940.03
580 Travel	3,468.64	2,270.98	8,891.24	14,630.86
<b>Total Other Purchased Services</b>	<b>\$6,176.79</b>	<b>\$3,002.86</b>	<b>\$8,891.24</b>	<b>\$18,070.89</b>
<b>600 Supplies</b>				
610 General Supplies	11,257.45	60,197.55	3,676.71	75,131.71
630 Food	315.77	83.85		399.62
640 Books and Periodicals	18,486.18	8,961.67	1,596.07	29,043.92
650 Supplies & Fees – Technology Related	198,214.75	209,290.46	6,500.00	414,005.21
<b>Total Supplies</b>	<b>\$228,274.15</b>	<b>\$278,533.53</b>	<b>\$11,772.78</b>	<b>\$518,580.46</b>
<b>700 Property</b>				
752 Capital Equipment – Original and Additional	2,387.50	14,287.50		16,675.00
762 Capitalized Equipment - Replacement	60,992.50			60,992.50
766 Capitalized Technology Equipment – Replacement	2,596.50	2,596.50		5,193.00
<b>Total Property</b>	<b>\$65,976.50</b>	<b>\$16,884.00</b>		<b>\$82,860.50</b>
<b>800 Other Objects</b>				
810 Dues and Fees	680.00	943.61		1,623.61
<b>Total Other Objects</b>	<b>\$680.00</b>	<b>\$943.61</b>		<b>\$1,623.61</b>
<b>Total 2200 Support Services – Instructional Staff</b>	<b>\$2,223,986.65</b>	<b>\$1,951,968.76</b>	<b>\$173,741.35</b>	<b>\$4,349,696.76</b>

LEA : 123467103      Souderton Area SD

Printed 1/2/2020 9:58:27 AM

General Fund (10)

2210 Supervision of Educational Media Services	Elementary	Secondary	Federal	Total
100 <u>Personnel Services – Salaries</u>				
100 Personnel Services – Salaries	40,588.14	40,588.14		81,176.28
<b>Total Personnel Services – Salaries</b>	<b>\$40,588.14</b>	<b>\$40,588.14</b>		<b>\$81,176.28</b>
200 <u>Personnel Services – Employee Benefits</u>				
210 Group Insurance – Contracted Provider	271.48	271.48		542.96
220 Social Security Contributions	2,955.36	2,955.36		5,910.72
230 PSERS Retirement Contributions	13,214.22	13,214.22		26,428.44
250 Unemployment Compensation	8.88	8.88		17.76
260 Workers' Compensation	152.15	152.15		304.30
270 Group Insurance – Self-Insurance	8,818.00	8,818.00		17,636.00
291 Other Retirement Plans	1,875.00	1,875.00		3,750.00
<b>Total Personnel Services – Employee Benefits</b>	<b>\$27,295.09</b>	<b>\$27,295.09</b>		<b>\$54,590.18</b>
300 <u>Purchased Professional and Technical Services</u>				
330 Other Professional Services		3,190.00		3,190.00
<b>Total Purchased Professional and Technical Services</b>		<b>\$3,190.00</b>		<b>\$3,190.00</b>
600 <u>Supplies</u>				
610 General Supplies		3,721.67		3,721.67
630 Food	32.03	32.02		64.05
<b>Total Supplies</b>	<b>\$32.03</b>	<b>\$3,753.69</b>		<b>\$3,785.72</b>
<b>Total 2210 Supervision of Educational Media Services</b>	<b>\$67,915.26</b>	<b>\$74,826.92</b>		<b>\$142,742.18</b>

LEA : 123467103      Souderton Area SD

Printed 1/2/2020 9:58:27 AM

<b>General Fund (10)</b>				
<b>2211 Supervision of Educational Media Services – Head of Component</b>	<b><u>Elementary</u></b>	<b><u>Secondary</u></b>	<b><u>Federal</u></b>	<b><u>Total</u></b>
<b>100 <u>Personnel Services – Salaries</u></b>				
100 Personnel Services – Salaries	40,588.14	40,588.14		81,176.28
<b>Total Personnel Services – Salaries</b>	<b>\$40,588.14</b>	<b>\$40,588.14</b>		<b>\$81,176.28</b>
<b>200 <u>Personnel Services – Employee Benefits</u></b>				
210 Group Insurance – Contracted Provider	271.48	271.48		542.96
220 Social Security Contributions	2,955.36	2,955.36		5,910.72
230 PSERS Retirement Contributions	13,214.22	13,214.22		26,428.44
250 Unemployment Compensation	8.88	8.88		17.76
260 Workers' Compensation	152.15	152.15		304.30
270 Group Insurance – Self-Insurance	8,818.00	8,818.00		17,636.00
291 Other Retirement Plans	1,875.00	1,875.00		3,750.00
<b>Total Personnel Services – Employee Benefits</b>	<b>\$27,295.09</b>	<b>\$27,295.09</b>		<b>\$54,590.18</b>
<b>300 <u>Purchased Professional and Technical Services</u></b>				
330 Other Professional Services		3,190.00		3,190.00
<b>Total Purchased Professional and Technical Services</b>		<b>\$3,190.00</b>		<b>\$3,190.00</b>
<b>600 <u>Supplies</u></b>				
610 General Supplies		3,721.67		3,721.67
630 Food	32.03	32.02		64.05
<b>Total Supplies</b>	<b>\$32.03</b>	<b>\$3,753.69</b>		<b>\$3,785.72</b>
<b>Total 2211 Supervision of Educational Media Services – Head of Component</b>	<b>\$67,915.26</b>	<b>\$74,826.92</b>		<b>\$142,742.18</b>

LEA : 123467103      Souderton Area SD

Printed 1/2/2020 9:58:27 AM

General Fund (10)				
2220 Technology Support Services	<u>Elementary</u>	<u>Secondary</u>	<u>Federal</u>	<u>Total</u>
100 <u>Personnel Services – Salaries</u>				
100 Personnel Services – Salaries	149,331.27	149,331.27		298,662.54
<b>Total Personnel Services – Salaries</b>	<b>\$149,331.27</b>	<b>\$149,331.27</b>		<b>\$298,662.54</b>
200 <u>Personnel Services – Employee Benefits</u>				
210 Group Insurance – Contracted Provider	467.71	467.71		935.42
220 Social Security Contributions	10,744.70	10,744.70		21,489.40
230 PSERS Retirement Contributions	49,534.10	49,534.16		99,068.26
250 Unemployment Compensation	48.38	48.38		96.76
260 Workers' Compensation	556.45	556.45		1,112.90
270 Group Insurance – Self-Insurance	32,845.50	32,845.50		65,691.00
291 Other Retirement Plans	17,733.12	17,733.12		35,466.24
<b>Total Personnel Services – Employee Benefits</b>	<b>\$111,929.96</b>	<b>\$111,930.02</b>		<b>\$223,859.98</b>
500 <u>Other Purchased Services</u>				
580 Travel	909.10	909.10		1,818.20
<b>Total Other Purchased Services</b>	<b>\$909.10</b>	<b>\$909.10</b>		<b>\$1,818.20</b>
600 <u>Supplies</u>				
610 General Supplies	1,450.09	1,450.09		2,900.18
650 Supplies & Fees – Technology Related	76,429.88	76,429.88		152,859.76
<b>Total Supplies</b>	<b>\$77,879.97</b>	<b>\$77,879.97</b>		<b>\$155,759.94</b>
700 <u>Property</u>				
752 Capital Equipment – Original and Additional	2,387.50	2,387.50		4,775.00
766 Capitalized Technology Equipment – Replacement	2,596.50	2,596.50		5,193.00
<b>Total Property</b>	<b>\$4,984.00</b>	<b>\$4,984.00</b>		<b>\$9,968.00</b>
<b>Total 2220 Technology Support Services</b>	<b>\$345,034.30</b>	<b>\$345,034.36</b>		<b>\$690,068.66</b>

LEA : 123467103     Souderton Area SD

Printed 1/2/2020 9:58:27 AM

General Fund (10)				
2240 Computer-Assisted Instruction Support Services	<u>Elementary</u>	<u>Secondary</u>	<u>Federal</u>	<u>Total</u>
400 <u>Purchased Property Services</u>				
440 Rentals	3,124.68	2,464.98		5,589.66
<b>Total Purchased Property Services</b>	<b>\$3,124.68</b>	<b>\$2,464.98</b>		<b>\$5,589.66</b>
600 <u>Supplies</u>				
610 General Supplies	5,790.00	18,540.92		24,330.92
650 Supplies & Fees – Technology Related	525.00	14,280.00		14,805.00
<b>Total Supplies</b>	<b>\$6,315.00</b>	<b>\$32,820.92</b>		<b>\$39,135.92</b>
700 <u>Property</u>				
752 Capital Equipment – Original and Additional		11,900.00		11,900.00
762 Capitalized Equipment - Replacement	60,992.50			60,992.50
<b>Total Property</b>	<b>\$60,992.50</b>	<b>\$11,900.00</b>		<b>\$72,892.50</b>
800 <u>Other Objects</u>				
810 Dues and Fees		263.61		263.61
<b>Total Other Objects</b>		<b>\$263.61</b>		<b>\$263.61</b>
<b>Total 2240 Computer-Assisted Instruction Support Services</b>	<b>\$70,432.18</b>	<b>\$47,449.51</b>		<b>\$117,881.69</b>

LEA : 123467103     Souderton Area SD

Printed 1/2/2020 9:58:27 AM

General Fund (10)					
2250 School Library Services		Elementary	Secondary	Federal	Total
100 Personnel Services – Salaries					
100 Personnel Services – Salaries		457,131.07	218,113.00		675,244.07
Total Personnel Services – Salaries		\$457,131.07	\$218,113.00		\$675,244.07
200 Personnel Services – Employee Benefits					
210 Group Insurance – Contracted Provider		869.79	415.34		1,285.13
220 Social Security Contributions		33,206.67	15,429.03		48,635.70
230 PSERS Retirement Contributions		152,818.82	72,915.19		225,734.01
250 Unemployment Compensation		103.96	50.71		154.67
260 Workers' Compensation		1,705.96	817.48		2,523.44
270 Group Insurance – Self-Insurance		91,362.00	45,105.00		136,467.00
Total Personnel Services – Employee Benefits		\$280,067.20	\$134,732.75		\$414,799.95
600 Supplies					
610 General Supplies		1,565.69	736.66		2,302.35
640 Books and Periodicals		17,444.62	8,475.40		25,920.02
650 Supplies & Fees – Technology Related		27,539.37	29,094.04		56,633.41
Total Supplies		\$46,549.68	\$38,306.10		\$84,855.78
Total 2250 School Library Services		\$783,747.95	\$391,151.85		\$1,174,899.80

LEA : 123467103      Souderton Area SD

Printed 1/2/2020 9:58:27 AM

General Fund (10)

2260 Instruction and Curriculum Development Services	Elementary	Secondary	Federal	Total
100 <u>Personnel Services – Salaries</u>				
100 Personnel Services – Salaries	277,526.51	306,187.63		583,714.14
<b>Total Personnel Services – Salaries</b>	<b>\$277,526.51</b>	<b>\$306,187.63</b>		<b>\$583,714.14</b>
200 <u>Personnel Services – Employee Benefits</u>				
210 Group Insurance – Contracted Provider	1,495.10	1,541.21		3,036.31
220 Social Security Contributions	20,167.18	22,388.75		42,555.93
230 PSERS Retirement Contributions	90,317.50	102,303.20		192,620.70
250 Unemployment Compensation	46.98	47.70		94.68
260 Workers' Compensation	1,047.25	1,164.64		2,211.89
270 Group Insurance – Self-Insurance	31,287.00	31,569.00		62,856.00
291 Other Retirement Plans	4,275.00	4,503.58		8,778.58
<b>Total Personnel Services – Employee Benefits</b>	<b>\$148,636.01</b>	<b>\$163,518.08</b>		<b>\$312,154.09</b>
400 <u>Purchased Property Services</u>				
430 Repairs and Maintenance Services	4,936.63	5,776.69		10,713.32
<b>Total Purchased Property Services</b>	<b>\$4,936.63</b>	<b>\$5,776.69</b>		<b>\$10,713.32</b>
500 <u>Other Purchased Services</u>				
530 Communications	500.00			500.00
550 Printing and Binding	2,208.15	731.88		2,940.03
580 Travel	968.24	10.00		978.24
<b>Total Other Purchased Services</b>	<b>\$3,676.39</b>	<b>\$741.88</b>		<b>\$4,418.27</b>
600 <u>Supplies</u>				
610 General Supplies	2,451.67	34,668.21		37,119.88
630 Food	230.14	51.83		281.97
640 Books and Periodicals	578.10	486.27		1,064.37
650 Supplies & Fees – Technology Related	88,832.16	84,598.21		173,430.37
<b>Total Supplies</b>	<b>\$92,092.07</b>	<b>\$119,804.52</b>		<b>\$211,896.59</b>
800 <u>Other Objects</u>				
810 Dues and Fees	680.00	680.00		1,360.00
<b>Total Other Objects</b>	<b>\$680.00</b>	<b>\$680.00</b>		<b>\$1,360.00</b>
<b>Total 2260 Instruction and Curriculum Development Services</b>	<b>\$527,547.61</b>	<b>\$596,708.80</b>		<b>\$1,124,256.41</b>



LEA : 123467103     Souderton Area SD

Printed 1/2/2020 9:58:27 AM

General Fund (10)				
2270 Instructional Staff Professional Development Services	<u>Elementary</u>	<u>Secondary</u>	<u>Federal</u>	<u>Total</u>
100 <u>Personnel Services – Salaries</u>				
100 Personnel Services – Salaries	210,706.99	271,081.89	90,720.07	572,508.95
<b>Total Personnel Services – Salaries</b>	<b>\$210,706.99</b>	<b>\$271,081.89</b>	<b>\$90,720.07</b>	<b>\$572,508.95</b>
200 <u>Personnel Services – Employee Benefits</u>				
210 Group Insurance – Contracted Provider	229.31	219.97		449.28
220 Social Security Contributions	15,162.30	20,158.68	6,807.68	42,128.66
230 PSERS Retirement Contributions	68,134.52	91,767.67	30,425.39	190,327.58
240 Tuition Reimbursement	101,482.00	68,788.00		170,270.00
250 Unemployment Compensation	63.24	68.15		131.39
260 Workers' Compensation	1,237.29	1,393.06	6.48	2,636.83
270 Group Insurance – Self-Insurance	19,081.00	21,824.00		40,905.00
<b>Total Personnel Services – Employee Benefits</b>	<b>\$205,389.66</b>	<b>\$204,219.53</b>	<b>\$37,239.55</b>	<b>\$446,848.74</b>
300 <u>Purchased Professional and Technical Services</u>				
360 Employee Training and Development Services	6,216.00	14,175.69	25,117.71	45,509.40
<b>Total Purchased Professional and Technical Services</b>	<b>\$6,216.00</b>	<b>\$14,175.69</b>	<b>\$25,117.71</b>	<b>\$45,509.40</b>
500 <u>Other Purchased Services</u>				
580 Travel	1,591.30	1,351.88	8,891.24	11,834.42
<b>Total Other Purchased Services</b>	<b>\$1,591.30</b>	<b>\$1,351.88</b>	<b>\$8,891.24</b>	<b>\$11,834.42</b>
600 <u>Supplies</u>				
610 General Supplies		1,080.00	3,676.71	4,756.71
630 Food	53.60			53.60
640 Books and Periodicals	463.46		1,596.07	2,059.53
650 Supplies & Fees – Technology Related	4,888.34	4,888.33	6,500.00	16,276.67
<b>Total Supplies</b>	<b>\$5,405.40</b>	<b>\$5,968.33</b>	<b>\$11,772.78</b>	<b>\$23,146.51</b>
<b>Total 2270 Instructional Staff Professional Development Services</b>	<b>\$429,309.35</b>	<b>\$496,797.32</b>	<b>\$173,741.35</b>	<b>\$1,099,848.02</b>

LEA : 123467103     Souderton Area SD

Printed 1/2/2020 9:58:27 AM

General Fund (10)

2300 Support Services – Administration	Elementary	Secondary	Federal	Total
<b>100 Personnel Services – Salaries</b>				
100 Personnel Services – Salaries	1,077,429.82	1,406,070.00	36,918.27	2,875,169.18
<b>Total Personnel Services – Salaries</b>	<b>\$1,077,429.82</b>	<b>\$1,406,070.00</b>	<b>\$36,918.27</b>	<b>\$2,875,169.18</b>
<b>200 Personnel Services – Employee Benefits</b>				
210 Group Insurance – Contracted Provider	5,643.71	8,017.70		15,215.57
220 Social Security Contributions	76,020.87	101,467.42	2,774.51	202,657.15
230 PSERS Retirement Contributions	342,812.61	461,724.44	11,522.21	901,211.05
250 Unemployment Compensation	219.12	320.25		585.06
260 Workers' Compensation	3,934.57	5,457.58		10,395.78
270 Group Insurance – Self-Insurance	186,914.00	232,731.00		449,674.00
291 Other Retirement Plans	5,550.00	21,240.00		39,290.00
<b>Total Personnel Services – Employee Benefits</b>	<b>\$621,094.88</b>	<b>\$830,958.39</b>	<b>\$14,296.72</b>	<b>\$1,619,028.61</b>
<b>300 Purchased Professional and Technical Services</b>				
330 Other Professional Services		225.00		304,761.71
340 Technical Services				2,200.00
<b>Total Purchased Professional and Technical Services</b>		<b>\$225.00</b>		<b>\$306,961.71</b>
<b>400 Purchased Property Services</b>				
430 Repairs and Maintenance Services		1,760.50		1,760.50
440 Rentals	23,410.81	25,738.01		49,148.82
<b>Total Purchased Property Services</b>	<b>\$23,410.81</b>	<b>\$27,498.51</b>		<b>\$50,909.32</b>
<b>500 Other Purchased Services</b>				
520 Insurance – General				66,040.00
530 Communications	4,184.41	13,648.48		67,708.43
549 Other Advertising/Public Relations				3,236.18
550 Printing and Binding	19,105.83	18,006.17		44,671.43
580 Travel	383.19	134.68		4,805.87
<b>Total Other Purchased Services</b>	<b>\$23,673.43</b>	<b>\$31,789.33</b>		<b>\$186,461.91</b>
<b>600 Supplies</b>				
610 General Supplies	5,882.47	13,758.82		22,074.58
630 Food	447.50	2,955.88		6,888.65
640 Books and Periodicals	4,004.16			5,019.08
650 Supplies & Fees – Technology Related	39.00			8,989.00
<b>Total Supplies</b>	<b>\$10,373.13</b>	<b>\$16,714.70</b>		<b>\$42,971.31</b>
<b>700 Property</b>				
762 Capitalized Equipment - Replacement		60.00		60.00
766 Capitalized Technology Equipment – Replacement		12,692.79		12,692.79
<b>Total Property</b>		<b>\$12,752.79</b>		<b>\$12,752.79</b>
<b>800 Other Objects</b>				
810 Dues and Fees	3,570.00	5,414.00		30,284.94
<b>Total Other Objects</b>	<b>\$3,570.00</b>	<b>\$5,414.00</b>		<b>\$30,284.94</b>
<b>Total 2300 Support Services – Administration</b>	<b>\$1,759,552.07</b>	<b>\$2,331,422.72</b>	<b>\$51,214.99</b>	<b>\$5,124,539.77</b>

LEA : 123467103      Souderton Area SD

Printed 1/2/2020 9:58:27 AM

General Fund (10)				
2310 Board Services				
	<u>Elementary</u>	<u>Secondary</u>	<u>Federal</u>	<u>Total</u>
300 <u>Purchased Professional and Technical Services</u>				
330 Other Professional Services				25,192.00
340 Technical Services				2,200.00
Total Purchased Professional and Technical Services				\$27,392.00
500 <u>Other Purchased Services</u>				
520 Insurance – General				54,400.00
530 Communications				29.05
549 Other Advertising/Public Relations				2,586.18
580 Travel				2,096.96
Total Other Purchased Services				\$59,112.19
600 <u>Supplies</u>				
610 General Supplies				575.66
630 Food				7.52
640 Books and Periodicals				68.00
650 Supplies & Fees – Technology Related				8,450.00
Total Supplies				\$9,101.18
800 <u>Other Objects</u>				
810 Dues and Fees				13,795.00
Total Other Objects				\$13,795.00
Total 2310 Board Services				\$109,400.37

LEA : 123467103      Souderton Area SD

Printed 1/2/2020 9:58:27 AM

General Fund (10)				
2330 Tax Assessment and Collection Services	<u>Elementary</u>	<u>Secondary</u>	<u>Federal</u>	<u>Total</u>
100 <u>Personnel Services – Salaries</u>				
100 Personnel Services – Salaries				88,493.00
Total Personnel Services – Salaries				\$88,493.00
200 <u>Personnel Services – Employee Benefits</u>				
210 Group Insurance – Contracted Provider				140.65
220 Social Security Contributions				6,769.73
Total Personnel Services – Employee Benefits				\$6,910.38
300 <u>Purchased Professional and Technical Services</u>				
330 Other Professional Services				132,089.55
Total Purchased Professional and Technical Services				\$132,089.55
500 <u>Other Purchased Services</u>				
520 Insurance – General				11,640.00
530 Communications				29,371.49
550 Printing and Binding				7,328.63
Total Other Purchased Services				\$48,340.12
600 <u>Supplies</u>				
610 General Supplies				1,042.17
650 Supplies & Fees – Technology Related				500.00
Total Supplies				\$1,542.17
800 <u>Other Objects</u>				
810 Dues and Fees				1,310.00
Total Other Objects				\$1,310.00
Total 2330 Tax Assessment and Collection Services				\$278,685.22

LEA : 123467103     Souderton Area SD

Printed 1/2/2020 9:58:27 AM

General Fund (10)

2350 Legal and Accounting Services	<u>Elementary</u>	<u>Secondary</u>	<u>Federal</u>	<u>Total</u>
300 <u>Purchased Professional and Technical Services</u>				
330 Other Professional Services				130,612.72
Total Purchased Professional and Technical Services				\$130,612.72
Total 2350 Legal and Accounting Services				\$130,612.72

LEA : 123467103     Souderton Area SD

Printed 1/2/2020 9:58:27 AM

General Fund (10)

2360 Office of the Superintendent / Executive Director Services	<u>Elementary</u>	<u>Secondary</u>	<u>Federal</u>	<u>Total</u>
100 <u>Personnel Services – Salaries</u>				
100 Personnel Services – Salaries				266,258.09
<b>Total Personnel Services – Salaries</b>				<b>\$266,258.09</b>
200 <u>Personnel Services – Employee Benefits</u>				
210 Group Insurance – Contracted Provider				1,413.51
220 Social Security Contributions				15,624.62
230 PSERS Retirement Contributions				85,151.79
250 Unemployment Compensation				45.69
260 Workers' Compensation				1,003.63
270 Group Insurance – Self-Insurance				30,029.00
291 Other Retirement Plans				12,500.00
<b>Total Personnel Services – Employee Benefits</b>				<b>\$145,768.24</b>
500 <u>Other Purchased Services</u>				
530 Communications		267.91		267.91
549 Other Advertising/Public Relations				650.00
550 Printing and Binding				230.80
580 Travel				2,191.04
<b>Total Other Purchased Services</b>		<b>\$267.91</b>		<b>\$3,339.75</b>
600 <u>Supplies</u>				
610 General Supplies				815.46
630 Food				3,477.75
640 Books and Periodicals				946.92
<b>Total Supplies</b>				<b>\$5,240.13</b>
800 <u>Other Objects</u>				
810 Dues and Fees				6,195.94
<b>Total Other Objects</b>				<b>\$6,195.94</b>
<b>Total 2360 Office of the Superintendent / Executive Director Services</b>		<b>\$267.91</b>		<b>\$426,802.15</b>

LEA : 123467103     Souderton Area SD

Printed 1/2/2020 9:58:27 AM

General Fund (10)

2370 Community Relations Services	<u>Elementary</u>	<u>Secondary</u>	<u>Federal</u>	<u>Total</u>
500 <u>Other Purchased Services</u>				
530 Communications				20,475.00
Total Other Purchased Services				\$20,475.00
Total 2370 Community Relations Services				\$20,475.00

LEA : 123467103     Souderton Area SD

Printed 1/2/2020 9:58:27 AM

General Fund (10)

2380 Office of the Principal Services	Elementary	Secondary	Federal	Total
<b>100 <u>Personnel Services – Salaries</u></b>				
100 Personnel Services – Salaries	1,077,429.82	1,406,070.00	36,918.27	2,520,418.09
<b>Total Personnel Services – Salaries</b>	<b>\$1,077,429.82</b>	<b>\$1,406,070.00</b>	<b>\$36,918.27</b>	<b>\$2,520,418.09</b>
<b>200 <u>Personnel Services – Employee Benefits</u></b>				
210 Group Insurance – Contracted Provider	5,643.71	8,017.70		13,661.41
220 Social Security Contributions	76,020.87	101,467.42	2,774.51	180,262.80
230 PSERS Retirement Contributions	342,812.61	461,724.44	11,522.21	816,059.26
250 Unemployment Compensation	219.12	320.25		539.37
260 Workers' Compensation	3,934.57	5,457.58		9,392.15
270 Group Insurance – Self-Insurance	186,914.00	232,731.00		419,645.00
291 Other Retirement Plans	5,550.00	21,240.00		26,790.00
<b>Total Personnel Services – Employee Benefits</b>	<b>\$621,094.88</b>	<b>\$830,958.39</b>	<b>\$14,296.72</b>	<b>\$1,466,349.99</b>
<b>300 <u>Purchased Professional and Technical Services</u></b>				
330 Other Professional Services		225.00		225.00
<b>Total Purchased Professional and Technical Services</b>		<b>\$225.00</b>		<b>\$225.00</b>
<b>400 <u>Purchased Property Services</u></b>				
430 Repairs and Maintenance Services		1,760.50		1,760.50
440 Rentals	23,410.81	25,738.01		49,148.82
<b>Total Purchased Property Services</b>	<b>\$23,410.81</b>	<b>\$27,498.51</b>		<b>\$50,909.32</b>
<b>500 <u>Other Purchased Services</u></b>				
530 Communications	4,184.41	13,380.57		17,564.98
550 Printing and Binding	19,105.83	18,006.17		37,112.00
580 Travel	383.19	134.68		517.87
<b>Total Other Purchased Services</b>	<b>\$23,673.43</b>	<b>\$31,521.42</b>		<b>\$55,194.85</b>
<b>600 <u>Supplies</u></b>				
610 General Supplies	5,882.47	13,758.82		19,641.29
630 Food	447.50	2,955.88		3,403.38
640 Books and Periodicals	4,004.16			4,004.16
650 Supplies & Fees – Technology Related	39.00			39.00
<b>Total Supplies</b>	<b>\$10,373.13</b>	<b>\$16,714.70</b>		<b>\$27,087.83</b>
<b>700 <u>Property</u></b>				
762 Capitalized Equipment - Replacement		60.00		60.00
766 Capitalized Technology Equipment – Replacement		12,692.79		12,692.79
<b>Total Property</b>		<b>\$12,752.79</b>		<b>\$12,752.79</b>
<b>800 <u>Other Objects</u></b>				
810 Dues and Fees	3,570.00	5,414.00		8,984.00
<b>Total Other Objects</b>	<b>\$3,570.00</b>	<b>\$5,414.00</b>		<b>\$8,984.00</b>
<b>Total 2380 Office of the Principal Services</b>	<b>\$1,759,552.07</b>	<b>\$2,331,154.81</b>	<b>\$51,214.99</b>	<b>\$4,141,921.87</b>



LEA : 123467103     Souderton Area SD

Printed 1/2/2020 9:58:27 AM

General Fund (10)

2390 Other Administration Services	<u>Elementary</u>	<u>Secondary</u>	<u>Federal</u>	<u>Total</u>
300 <u>Purchased Professional and Technical Services</u>				
330 Other Professional Services				16,642.44
Total Purchased Professional and Technical Services				\$16,642.44
Total 2390 Other Administration Services				\$16,642.44

LEA : 123467103     Souderton Area SD

Printed 1/2/2020 9:58:27 AM

General Fund (10)				
2400 Support Services – Pupil Health	<u>Elementary</u>	<u>Secondary</u>	<u>Federal</u>	<u>Total</u>
100 <u>Personnel Services – Salaries</u>				
100 Personnel Services – Salaries				810,093.91
Total Personnel Services – Salaries				\$810,093.91
200 <u>Personnel Services – Employee Benefits</u>				
210 Group Insurance – Contracted Provider				1,457.19
220 Social Security Contributions				59,599.86
230 PSERS Retirement Contributions				266,088.69
250 Unemployment Compensation				246.58
260 Workers' Compensation				3,032.39
270 Group Insurance – Self-Insurance				122,450.00
Total Personnel Services – Employee Benefits				\$452,874.71
300 <u>Purchased Professional and Technical Services</u>				
330 Other Professional Services				3,679.00
Total Purchased Professional and Technical Services				\$3,679.00
400 <u>Purchased Property Services</u>				
410 Cleaning Services				129.00
430 Repairs and Maintenance Services				635.00
Total Purchased Property Services				\$764.00
500 <u>Other Purchased Services</u>				
580 Travel				46.24
Total Other Purchased Services				\$46.24
600 <u>Supplies</u>				
610 General Supplies				21,754.79
640 Books and Periodicals				266.00
Total Supplies				\$22,020.79
Total 2400 Support Services – Pupil Health				\$1,289,478.65

LEA : 123467103      Souderton Area SD

Printed 1/2/2020 9:58:27 AM

General Fund (10)

2440 Nursing Services

	Elementary	Secondary	Federal	Total
100 <u>Personnel Services – Salaries</u>				
100 Personnel Services – Salaries				806,593.79
<b>Total Personnel Services – Salaries</b>				<b>\$806,593.79</b>
200 <u>Personnel Services – Employee Benefits</u>				
210 Group Insurance – Contracted Provider				1,457.09
220 Social Security Contributions				59,338.93
230 PSERS Retirement Contributions				264,918.67
250 Unemployment Compensation				246.25
260 Workers' Compensation				3,013.43
270 Group Insurance – Self-Insurance				120,621.00
<b>Total Personnel Services – Employee Benefits</b>				<b>\$449,595.37</b>
300 <u>Purchased Professional and Technical Services</u>				
330 Other Professional Services				3,679.00
<b>Total Purchased Professional and Technical Services</b>				<b>\$3,679.00</b>
400 <u>Purchased Property Services</u>				
410 Cleaning Services				129.00
430 Repairs and Maintenance Services				635.00
<b>Total Purchased Property Services</b>				<b>\$764.00</b>
500 <u>Other Purchased Services</u>				
580 Travel				46.24
<b>Total Other Purchased Services</b>				<b>\$46.24</b>
600 <u>Supplies</u>				
610 General Supplies				21,754.79
640 Books and Periodicals				266.00
<b>Total Supplies</b>				<b>\$22,020.79</b>
<b>Total 2440 Nursing Services</b>				<b>\$1,282,699.19</b>

LEA : 123467103     Souderton Area SD

Printed 1/2/2020 9:58:27 AM

General Fund (10)

2450 Nonpublic Health Services	<u>Elementary</u>	<u>Secondary</u>	<u>Federal</u>	<u>Total</u>
100 <u>Personnel Services – Salaries</u>				
100 Personnel Services – Salaries				3,500.12
Total Personnel Services – Salaries				\$3,500.12
200 <u>Personnel Services – Employee Benefits</u>				
210 Group Insurance – Contracted Provider				0.10
220 Social Security Contributions				260.93
230 PSERS Retirement Contributions				1,170.02
250 Unemployment Compensation				0.33
260 Workers' Compensation				18.96
270 Group Insurance – Self-Insurance				1,829.00
Total Personnel Services – Employee Benefits				\$3,279.34
Total 2450 Nonpublic Health Services				\$6,779.46

LEA : 123467103      Souderton Area SD

Printed 1/2/2020 9:58:27 AM

General Fund (10)				
2500 Support Services – Business	<u>Elementary</u>	<u>Secondary</u>	<u>Federal</u>	<u>Total</u>
100 <u>Personnel Services – Salaries</u>				
100 Personnel Services – Salaries				462,858.02
Total Personnel Services – Salaries				\$462,858.02
200 <u>Personnel Services – Employee Benefits</u>				
210 Group Insurance – Contracted Provider				2,099.41
220 Social Security Contributions				32,784.79
230 PSERS Retirement Contributions				153,852.74
250 Unemployment Compensation				129.41
260 Workers' Compensation				1,728.05
270 Group Insurance – Self-Insurance				99,408.00
291 Other Retirement Plans				24,565.20
Total Personnel Services – Employee Benefits				\$314,567.60
300 <u>Purchased Professional and Technical Services</u>				
330 Other Professional Services				14,820.00
Total Purchased Professional and Technical Services				\$14,820.00
400 <u>Purchased Property Services</u>				
410 Cleaning Services				1,782.00
430 Repairs and Maintenance Services				992.97
440 Rentals				65,121.72
Total Purchased Property Services				\$67,896.69
500 <u>Other Purchased Services</u>				
530 Communications				18,590.46
580 Travel				1,089.29
Total Other Purchased Services				\$19,679.75
600 <u>Supplies</u>				
610 General Supplies				30,338.71
630 Food				375.65
650 Supplies & Fees – Technology Related				11,292.86
Total Supplies				\$42,007.22
700 <u>Property</u>				
762 Capitalized Equipment - Replacement				6,385.00
Total Property				\$6,385.00
800 <u>Other Objects</u>				
810 Dues and Fees				20,995.97
Total Other Objects				\$20,995.97
Total 2500 Support Services – Business				\$949,210.25

LEA : 123467103      Souderton Area SD

Printed 1/2/2020 9:58:27 AM

General Fund (10)				
2510 Fiscal Services	<u>Elementary</u>	<u>Secondary</u>	<u>Federal</u>	<u>Total</u>
100 <u>Personnel Services – Salaries</u>				
100 Personnel Services – Salaries				367,481.70
Total Personnel Services – Salaries				\$367,481.70
200 <u>Personnel Services – Employee Benefits</u>				
210 Group Insurance – Contracted Provider				1,924.05
220 Social Security Contributions				25,812.12
230 PSERS Retirement Contributions				121,968.52
250 Unemployment Compensation				89.99
260 Workers' Compensation				1,372.42
270 Group Insurance – Self-Insurance				70,056.00
291 Other Retirement Plans				24,565.20
Total Personnel Services – Employee Benefits				\$245,788.30
300 <u>Purchased Professional and Technical Services</u>				
330 Other Professional Services				14,820.00
Total Purchased Professional and Technical Services				\$14,820.00
400 <u>Purchased Property Services</u>				
410 Cleaning Services				1,782.00
440 Rentals				62,903.72
Total Purchased Property Services				\$64,685.72
500 <u>Other Purchased Services</u>				
530 Communications				18,590.46
580 Travel				1,089.29
Total Other Purchased Services				\$19,679.75
600 <u>Supplies</u>				
610 General Supplies				26,980.88
630 Food				375.65
650 Supplies & Fees – Technology Related				11,292.86
Total Supplies				\$38,649.39
700 <u>Property</u>				
762 Capitalized Equipment - Replacement				6,385.00
Total Property				\$6,385.00
800 <u>Other Objects</u>				
810 Dues and Fees				20,995.97
Total Other Objects				\$20,995.97
Total 2510 Fiscal Services				\$778,485.83

LEA : 123467103      Souderton Area SD

Printed 1/2/2020 9:58:27 AM

General Fund (10)				
2511 Supervision of Fiscal Services - Head of Component	<u>Elementary</u>	<u>Secondary</u>	<u>Federal</u>	<u>Total</u>
100 <u>Personnel Services – Salaries</u>				
100 Personnel Services – Salaries				191,436.86
Total Personnel Services – Salaries				\$191,436.86
200 <u>Personnel Services – Employee Benefits</u>				
210 Group Insurance – Contracted Provider				1,110.02
220 Social Security Contributions				12,450.31
230 PSERS Retirement Contributions				63,997.32
250 Unemployment Compensation				48.16
260 Workers' Compensation				715.21
270 Group Insurance – Self-Insurance				27,992.00
291 Other Retirement Plans				20,485.20
Total Personnel Services – Employee Benefits				\$126,798.22
300 <u>Purchased Professional and Technical Services</u>				
330 Other Professional Services				14,820.00
Total Purchased Professional and Technical Services				\$14,820.00
400 <u>Purchased Property Services</u>				
410 Cleaning Services				1,782.00
440 Rentals				62,903.72
Total Purchased Property Services				\$64,685.72
500 <u>Other Purchased Services</u>				
530 Communications				18,590.46
580 Travel				1,089.29
Total Other Purchased Services				\$19,679.75
600 <u>Supplies</u>				
610 General Supplies				26,980.88
630 Food				375.65
650 Supplies & Fees – Technology Related				11,292.86
Total Supplies				\$38,649.39
700 <u>Property</u>				
762 Capitalized Equipment - Replacement				6,385.00
Total Property				\$6,385.00
800 <u>Other Objects</u>				
810 Dues and Fees				7,229.23
Total Other Objects				\$7,229.23
Total 2511 Supervision of Fiscal Services - Head of Component				\$469,684.17

LEA : 123467103     Souderton Area SD

Printed 1/2/2020 9:58:27 AM

General Fund (10)

2513 Receiving and Disbursing Funds Services

Elementary                      Secondary                      Federal                      Total

100 <u>Personnel Services – Salaries</u>				
100 Personnel Services – Salaries				21,268.24
<b>Total Personnel Services – Salaries</b>				<b>\$21,268.24</b>
200 <u>Personnel Services – Employee Benefits</u>				
210 Group Insurance – Contracted Provider				36.91
220 Social Security Contributions				1,492.30
230 PSERS Retirement Contributions				7,109.96
250 Unemployment Compensation				6.84
260 Workers' Compensation				81.40
270 Group Insurance – Self-Insurance				6,140.00
<b>Total Personnel Services – Employee Benefits</b>				<b>\$14,867.41</b>
<b>Total 2513 Receiving and Disbursing Funds Services</b>				<b>\$36,135.65</b>



LEA : 123467103     Souderton Area SD

Printed 1/2/2020 9:58:27 AM

General Fund (10)					
2514 Payroll Services		<u>Elementary</u>	<u>Secondary</u>	<u>Federal</u>	<u>Total</u>
<b>100 <u>Personnel Services – Salaries</u></b>					
100 Personnel Services – Salaries					53,947.00
<b>Total Personnel Services – Salaries</b>					<b>\$53,947.00</b>
<b>200 <u>Personnel Services – Employee Benefits</u></b>					
210 Group Insurance – Contracted Provider					101.53
220 Social Security Contributions					4,129.32
230 PSERS Retirement Contributions					18,034.42
250 Unemployment Compensation					15.20
260 Workers' Compensation					199.04
270 Group Insurance – Self-Insurance					18,374.00
291 Other Retirement Plans					1,450.00
<b>Total Personnel Services – Employee Benefits</b>					<b>\$42,303.51</b>
<b>Total 2514 Payroll Services</b>					<b>\$96,250.51</b>

LEA : 123467103     Souderton Area SD

Printed 1/2/2020 9:58:27 AM

General Fund (10)

2515 Financial Accounting Services	<u>Elementary</u>	<u>Secondary</u>	<u>Federal</u>	<u>Total</u>
100 <u>Personnel Services – Salaries</u>				
100 Personnel Services – Salaries				100,829.60
Total Personnel Services – Salaries				\$100,829.60
200 <u>Personnel Services – Employee Benefits</u>				
210 Group Insurance – Contracted Provider				675.59
220 Social Security Contributions				7,740.19
230 PSERS Retirement Contributions				32,826.82
250 Unemployment Compensation				19.79
260 Workers' Compensation				376.77
270 Group Insurance – Self-Insurance				17,550.00
291 Other Retirement Plans				2,630.00
Total Personnel Services – Employee Benefits				\$61,819.16
Total 2515 Financial Accounting Services				\$162,648.76

Page 91

LEA : 123467103     Souderton Area SD

Printed 1/2/2020 9:58:27 AM

General Fund (10)

2520 Purchasing Services

Elementary                      Secondary                      Federal                      Total

100 <u>Personnel Services – Salaries</u>				
100 Personnel Services – Salaries				43,392.79
<b>Total Personnel Services – Salaries</b>				<b>\$43,392.79</b>
200 <u>Personnel Services – Employee Benefits</u>				
210 Group Insurance – Contracted Provider				83.06
220 Social Security Contributions				3,103.84
230 PSERS Retirement Contributions				14,506.13
250 Unemployment Compensation				14.18
260 Workers' Compensation				158.91
270 Group Insurance – Self-Insurance				14,377.00
<b>Total Personnel Services – Employee Benefits</b>				<b>\$32,243.12</b>
<b>Total 2520 Purchasing Services</b>				<b>\$75,635.91</b>

LEA : 123467103     Souderton Area SD

Printed 1/2/2020 9:58:27 AM

General Fund (10)				
2540 Printing, Publishing and Duplicating Services	<u>Elementary</u>	<u>Secondary</u>	<u>Federal</u>	<u>Total</u>
100 <u>Personnel Services – Salaries</u>				
100 Personnel Services – Salaries				51,983.53
Total Personnel Services – Salaries				\$51,983.53
200 <u>Personnel Services – Employee Benefits</u>				
210 Group Insurance – Contracted Provider				92.30
220 Social Security Contributions				3,868.83
230 PSERS Retirement Contributions				17,378.09
250 Unemployment Compensation				25.24
260 Workers' Compensation				196.72
270 Group Insurance – Self-Insurance				14,975.00
Total Personnel Services – Employee Benefits				\$36,536.18
400 <u>Purchased Property Services</u>				
430 Repairs and Maintenance Services				992.97
440 Rentals				2,218.00
Total Purchased Property Services				\$3,210.97
600 <u>Supplies</u>				
610 General Supplies				3,357.83
Total Supplies				\$3,357.83
Total 2540 Printing, Publishing and Duplicating Services				\$95,088.51

LEA : 123467103      Souderton Area SD

Printed 1/2/2020 9:58:27 AM

General Fund (10)				
2600 Operation and Maintenance of Plant Services	<u>Elementary</u>	<u>Secondary</u>	<u>Federal</u>	<u>Total</u>
100 <u>Personnel Services – Salaries</u>				
100 Personnel Services – Salaries				3,628,838.33
Total Personnel Services – Salaries				\$3,628,838.33
200 <u>Personnel Services – Employee Benefits</u>				
210 Group Insurance – Contracted Provider				6,275.18
220 Social Security Contributions				264,774.61
230 PSERS Retirement Contributions				1,183,998.78
250 Unemployment Compensation				1,249.75
260 Workers' Compensation				14,073.07
270 Group Insurance – Self-Insurance				791,855.00
291 Other Retirement Plans				4,366.26
Total Personnel Services – Employee Benefits				\$2,266,592.65
300 <u>Purchased Professional and Technical Services</u>				
330 Other Professional Services				3,850.00
350 Security / Safety Services				35,601.64
Total Purchased Professional and Technical Services				\$39,451.64
400 <u>Purchased Property Services</u>				
410 Cleaning Services				250,024.94
420 Utility Services				152,384.98
430 Repairs and Maintenance Services				428,280.99
440 Rentals				1,746.70
460 Extermination Services				5,161.90
Total Purchased Property Services				\$837,599.51
500 <u>Other Purchased Services</u>				
522 Automotive Liability Insurance				17,797.00
523 General Property and Liability Insurance				157,679.00
530 Communications				134,709.87
580 Travel				1,637.97
Total Other Purchased Services				\$311,823.84
600 <u>Supplies</u>				
610 General Supplies	169,842.93	161,708.44	250.00	331,801.37
620 Energy				1,286,915.61
650 Supplies & Fees – Technology Related				19,548.00
Total Supplies				\$1,638,264.98
700 <u>Property</u>				
762 Capitalized Equipment - Replacement				12,410.26
Total Property				\$12,410.26
800 <u>Other Objects</u>				
810 Dues and Fees				4,623.71
Total Other Objects				\$4,623.71
Total 2600 Operation and Maintenance of Plant Services	\$169,842.93	\$161,708.44	\$250.00	\$8,739,604.92

LEA : 123467103     Souderton Area SD

Printed 1/2/2020 9:58:27 AM

General Fund (10)				
2610 Supervision of Operation and Maintenance of Plant Services	<u>Elementary</u>	<u>Secondary</u>	<u>Federal</u>	<u>Total</u>
100 <u>Personnel Services – Salaries</u>				
100 Personnel Services – Salaries				181,186.90
<b>Total Personnel Services – Salaries</b>				<b>\$181,186.90</b>
200 <u>Personnel Services – Employee Benefits</u>				
210 Group Insurance – Contracted Provider				876.59
220 Social Security Contributions				13,237.70
230 PSERS Retirement Contributions				59,594.59
250 Unemployment Compensation				42.34
260 Workers' Compensation				676.63
270 Group Insurance – Self-Insurance				49,447.00
291 Other Retirement Plans				3,280.50
<b>Total Personnel Services – Employee Benefits</b>				<b>\$127,155.35</b>
300 <u>Purchased Professional and Technical Services</u>				
330 Other Professional Services				2,900.00
<b>Total Purchased Professional and Technical Services</b>				<b>\$2,900.00</b>
500 <u>Other Purchased Services</u>				
580 Travel				937.97
<b>Total Other Purchased Services</b>				<b>\$937.97</b>
600 <u>Supplies</u>				
610 General Supplies	1,022.50	1,743.80		2,766.30
<b>Total Supplies</b>	<b>\$1,022.50</b>	<b>\$1,743.80</b>		<b>\$2,766.30</b>
800 <u>Other Objects</u>				
810 Dues and Fees				959.00
<b>Total Other Objects</b>				<b>\$959.00</b>
<b>Total 2610 Supervision of Operation and Maintenance of Plant Services</b>	<b>\$1,022.50</b>	<b>\$1,743.80</b>		<b>\$315,905.52</b>

LEA : 123467103      Souderton Area SD

Printed 1/2/2020 9:58:27 AM

General Fund (10)				
2611 Supervision of Operation and Maintenance of Plant Services – Head of Component	<u>Elementary</u>	<u>Secondary</u>	<u>Federal</u>	<u>Total</u>
100 <u>Personnel Services – Salaries</u>				
100 Personnel Services – Salaries				181,186.90
Total Personnel Services – Salaries				\$181,186.90
200 <u>Personnel Services – Employee Benefits</u>				
210 Group Insurance – Contracted Provider				876.59
220 Social Security Contributions				13,237.70
230 PSERS Retirement Contributions				59,594.59
250 Unemployment Compensation				42.34
260 Workers' Compensation				676.63
270 Group Insurance – Self-Insurance				49,447.00
291 Other Retirement Plans				3,280.50
Total Personnel Services – Employee Benefits				\$127,155.35
300 <u>Purchased Professional and Technical Services</u>				
330 Other Professional Services				2,900.00
Total Purchased Professional and Technical Services				\$2,900.00
500 <u>Other Purchased Services</u>				
580 Travel				937.97
Total Other Purchased Services				\$937.97
600 <u>Supplies</u>				
610 General Supplies	1,022.50	1,743.80		2,766.30
Total Supplies	\$1,022.50	\$1,743.80		\$2,766.30
800 <u>Other Objects</u>				
810 Dues and Fees				959.00
Total Other Objects				\$959.00
Total 2611 Supervision of Operation and Maintenance of Plant Services – Head of Component	\$1,022.50	\$1,743.80		\$315,905.52



LEA : 123467103      Souderton Area SD

Printed 1/2/2020 9:58:27 AM

General Fund (10)

2620 Operation of Buildings Services	Elementary	Secondary	Federal	Total
100 <u>Personnel Services – Salaries</u>				
100 Personnel Services – Salaries				3,087,564.67
<b>Total Personnel Services – Salaries</b>				<b>\$3,087,564.67</b>
200 <u>Personnel Services – Employee Benefits</u>				
210 Group Insurance – Contracted Provider				5,153.11
220 Social Security Contributions				224,824.42
230 PSERS Retirement Contributions				1,008,080.88
250 Unemployment Compensation				1,081.73
260 Workers' Compensation				11,984.68
270 Group Insurance – Self-Insurance				696,079.00
<b>Total Personnel Services – Employee Benefits</b>				<b>\$1,947,203.82</b>
300 <u>Purchased Professional and Technical Services</u>				
330 Other Professional Services				950.00
<b>Total Purchased Professional and Technical Services</b>				<b>\$950.00</b>
400 <u>Purchased Property Services</u>				
430 Repairs and Maintenance Services				400,793.70
440 Rentals				1,746.70
<b>Total Purchased Property Services</b>				<b>\$402,540.40</b>
600 <u>Supplies</u>				
610 General Supplies	129,945.17	119,575.06		249,520.23
<b>Total Supplies</b>	<b>\$129,945.17</b>	<b>\$119,575.06</b>		<b>\$249,520.23</b>
700 <u>Property</u>				
762 Capitalized Equipment - Replacement				12,410.26
<b>Total Property</b>				<b>\$12,410.26</b>
<b>Total 2620 Operation of Buildings Services</b>	<b>\$129,945.17</b>	<b>\$119,575.06</b>		<b>\$5,700,189.38</b>

LEA : 123467103      Souderton Area SD

Printed 1/2/2020 9:58:27 AM

General Fund (10)				
2630 Care and Upkeep of Grounds Services	<u>Elementary</u>	<u>Secondary</u>	<u>Federal</u>	<u>Total</u>
100 <u>Personnel Services – Salaries</u>				
100 Personnel Services – Salaries				107,663.98
Total Personnel Services – Salaries				\$107,663.98
200 <u>Personnel Services – Employee Benefits</u>				
210 Group Insurance – Contracted Provider				184.59
220 Social Security Contributions				7,656.45
230 PSERS Retirement Contributions				35,991.92
250 Unemployment Compensation				29.39
260 Workers' Compensation				412.77
270 Group Insurance – Self-Insurance				25,841.00
Total Personnel Services – Employee Benefits				\$70,116.12
400 <u>Purchased Property Services</u>				
410 Cleaning Services				167,821.25
430 Repairs and Maintenance Services				3,112.54
Total Purchased Property Services				\$170,933.79
600 <u>Supplies</u>				
610 General Supplies	17,743.42	8,278.12		26,021.54
Total Supplies	\$17,743.42	\$8,278.12		\$26,021.54
Total 2630 Care and Upkeep of Grounds Services	\$17,743.42	\$8,278.12		\$374,735.43

LEA : 123467103     Souderton Area SD

Printed 1/2/2020 9:58:27 AM

General Fund (10)				
2650 Vehicle Operation and Maintenance Services (Other Than Student Transportation Vehicles)	<u>Elementary</u>	<u>Secondary</u>	<u>Federal</u>	<u>Total</u>
400 <u>Purchased Property Services</u>				
430 Repairs and Maintenance Services				16,377.61
<b>Total Purchased Property Services</b>				<b>\$16,377.61</b>
500 <u>Other Purchased Services</u>				
522 Automotive Liability Insurance				17,797.00
580 Travel				700.00
<b>Total Other Purchased Services</b>				<b>\$18,497.00</b>
600 <u>Supplies</u>				
610 General Supplies	2,964.71	10,074.62	250.00	13,289.33
620 Energy				5,685.12
<b>Total Supplies</b>	<b>\$2,964.71</b>	<b>\$10,074.62</b>	<b>\$250.00</b>	<b>\$18,974.45</b>
800 <u>Other Objects</u>				
810 Dues and Fees				115.00
<b>Total Other Objects</b>				<b>\$115.00</b>
<b>Total 2650 Vehicle Operation and Maintenance Services (Other Than Student Transportation Vehicles)</b>	<b>\$2,964.71</b>	<b>\$10,074.62</b>	<b>\$250.00</b>	<b>\$53,964.06</b>

LEA : 123467103     Souderton Area SD

Printed 1/2/2020 9:58:27 AM

General Fund (10)				
2660 Safety and Security Services	<u>Elementary</u>	<u>Secondary</u>	<u>Federal</u>	<u>Total</u>
100 <u>Personnel Services – Salaries</u>				
100 Personnel Services – Salaries				252,422.78
Total Personnel Services – Salaries				\$252,422.78
200 <u>Personnel Services – Employee Benefits</u>				
210 Group Insurance – Contracted Provider				60.89
220 Social Security Contributions				19,056.04
230 PSERS Retirement Contributions				80,331.39
250 Unemployment Compensation				96.29
260 Workers' Compensation				998.99
270 Group Insurance – Self-Insurance				20,488.00
291 Other Retirement Plans				1,085.76
Total Personnel Services – Employee Benefits				\$122,117.36
300 <u>Purchased Professional and Technical Services</u>				
350 Security / Safety Services				35,601.64
Total Purchased Professional and Technical Services				\$35,601.64
400 <u>Purchased Property Services</u>				
430 Repairs and Maintenance Services				7,997.14
Total Purchased Property Services				\$7,997.14
600 <u>Supplies</u>				
610 General Supplies	10,412.31	14,282.01		24,694.32
650 Supplies & Fees – Technology Related				19,548.00
Total Supplies	\$10,412.31	\$14,282.01		\$44,242.32
800 <u>Other Objects</u>				
810 Dues and Fees				43.00
Total Other Objects				\$43.00
Total 2660 Safety and Security Services	\$10,412.31	\$14,282.01		\$462,424.24

LEA : 123467103     Souderton Area SD

Printed 1/2/2020 9:58:27 AM

General Fund (10)				
2690 Other Operation and Maintenance of Plant Services	<u>Elementary</u>	<u>Secondary</u>	<u>Federal</u>	<u>Total</u>
400 <u>Purchased Property Services</u>				
410 Cleaning Services				82,203.69
420 Utility Services				152,384.98
460 Extermination Services				5,161.90
<b>Total Purchased Property Services</b>				<b>\$239,750.57</b>
500 <u>Other Purchased Services</u>				
523 General Property and Liability Insurance				157,679.00
530 Communications				134,709.87
<b>Total Other Purchased Services</b>				<b>\$292,388.87</b>
600 <u>Supplies</u>				
610 General Supplies	7,754.82	7,754.83		15,509.65
620 Energy				1,281,230.49
<b>Total Supplies</b>	<b>\$7,754.82</b>	<b>\$7,754.83</b>		<b>\$1,296,740.14</b>
800 <u>Other Objects</u>				
810 Dues and Fees				3,506.71
<b>Total Other Objects</b>				<b>\$3,506.71</b>
<b>Total 2690 Other Operation and Maintenance of Plant Services</b>	<b>\$7,754.82</b>	<b>\$7,754.83</b>		<b>\$1,832,386.29</b>

LEA : 123467103     Souderton Area SD

Printed 1/2/2020 9:58:27 AM

General Fund (10)

2700 Student Transportation Services	<u>Elementary</u>	<u>Secondary</u>	<u>Federal</u>	<u>Total</u>
300 <u>Purchased Professional and Technical Services</u>				
330 Other Professional Services				3,813.10
Total Purchased Professional and Technical Services				\$3,813.10
500 <u>Other Purchased Services</u>				
511 Student Transportation Services from Another LEA Within the State				3,304.80
513 Contracted Carriers			152,049.24	7,248,381.38
516 Student Transportation Services From the IU				812,762.75
519 Student Transportation Services From Other Sources				9,756.50
530 Communications				2,458.75
Total Other Purchased Services			\$152,049.24	\$8,076,664.18
600 <u>Supplies</u>				
610 General Supplies				581.25
650 Supplies & Fees – Technology Related				36,118.50
Total Supplies				\$36,699.75
Total 2700 Student Transportation Services			\$152,049.24	\$8,117,177.03

LEA : 123467103     Souderton Area SD

Printed 1/2/2020 9:58:27 AM

General Fund (10)

2720 Vehicle Operation Services

Elementary                      Secondary                      Federal                      Total

300 Purchased Professional and Technical Services

330 Other Professional Services 3,813.10

**Total Purchased Professional and Technical Services \$3,813.10**

500 Other Purchased Services

513 Contracted Carriers 152,049.24 6,266,669.54

516 Student Transportation Services From the IU 812,762.75

519 Student Transportation Services From Other Sources 9,756.50

530 Communications 2,458.75

**Total Other Purchased Services \$152,049.24 \$7,091,647.54**

600 Supplies

610 General Supplies 581.25

650 Supplies & Fees – Technology Related 36,118.50

**Total Supplies \$36,699.75**

**Total 2720 Vehicle Operation Services \$152,049.24 \$7,132,160.39**

LEA : 123467103     Souderton Area SD

Printed 1/2/2020 9:58:27 AM

General Fund (10)

2750 Nonpublic Transportation

Elementary                      Secondary                      Federal                      Total

500 Other Purchased Services

511 Student Transportation Services from Another LEA Within the State 3,304.80

513 Contracted Carriers 981,711.84

**Total Other Purchased Services \$985,016.64**

**Total 2750 Nonpublic Transportation \$985,016.64**



LEA : 123467103      Souderton Area SD

Printed 1/2/2020 9:58:27 AM

<b>General Fund (10)</b>				
<b>2800 Support Services – Central</b>	<b><u>Elementary</u></b>	<b><u>Secondary</u></b>	<b><u>Federal</u></b>	<b><u>Total</u></b>
<b>100 <u>Personnel Services – Salaries</u></b>				
100 Personnel Services – Salaries				732,619.60
<b>Total Personnel Services – Salaries</b>				<b>\$732,619.60</b>
<b>200 <u>Personnel Services – Employee Benefits</u></b>				
210 Group Insurance – Contracted Provider				4,047.31
220 Social Security Contributions				51,159.74
230 PSERS Retirement Contributions				239,465.80
240 Tuition Reimbursement				30,243.50
250 Unemployment Compensation				159.84
260 Workers' Compensation				2,732.68
270 Group Insurance – Self-Insurance				134,370.00
291 Other Retirement Plans				43,111.73
<b>Total Personnel Services – Employee Benefits</b>				<b>\$505,290.60</b>
<b>300 <u>Purchased Professional and Technical Services</u></b>				
329 Professional Educational Services – Other				8,181.75
330 Other Professional Services				22,689.50
360 Employee Training and Development Services				6,088.00
<b>Total Purchased Professional and Technical Services</b>				<b>\$36,959.25</b>
<b>400 <u>Purchased Property Services</u></b>				
430 Repairs and Maintenance Services				92,364.32
<b>Total Purchased Property Services</b>				<b>\$92,364.32</b>
<b>500 <u>Other Purchased Services</u></b>				
530 Communications				346,718.22
549 Other Advertising/Public Relations				747.69
550 Printing and Binding				71.55
580 Travel				744.22
<b>Total Other Purchased Services</b>				<b>\$348,281.68</b>
<b>600 <u>Supplies</u></b>				
610 General Supplies				75,554.40
650 Supplies & Fees – Technology Related				320,755.12
<b>Total Supplies</b>				<b>\$396,309.52</b>
<b>700 <u>Property</u></b>				
752 Capital Equipment – Original and Additional				11,990.82
766 Capitalized Technology Equipment – Replacement				4,260.00
768 Capitalized Technology Software - Replacement				17,977.94
<b>Total Property</b>				<b>\$34,228.76</b>
<b>800 <u>Other Objects</u></b>				
810 Dues and Fees				1,040.00
<b>Total Other Objects</b>				<b>\$1,040.00</b>
<b>Total 2800 Support Services – Central</b>				<b>\$2,147,093.73</b>

LEA : 123467103      Souderton Area SD

Printed 1/2/2020 9:58:27 AM

General Fund (10)				
2810 Planning, Research, Development and Evaluation Services	<u>Elementary</u>	<u>Secondary</u>	<u>Federal</u>	<u>Total</u>
100 <u>Personnel Services – Salaries</u>				
100 Personnel Services – Salaries				68,923.57
Total Personnel Services – Salaries				\$68,923.57
200 <u>Personnel Services – Employee Benefits</u>				
210 Group Insurance – Contracted Provider				441.72
220 Social Security Contributions				4,728.48
230 PSERS Retirement Contributions				23,041.15
250 Unemployment Compensation				7.14
260 Workers' Compensation				254.87
270 Group Insurance – Self-Insurance				17,692.00
291 Other Retirement Plans				19,761.73
Total Personnel Services – Employee Benefits				\$65,927.09
Total 2810 Planning, Research, Development and Evaluation Services				\$134,850.66

LEA : 123467103      Souderton Area SD

Printed 1/2/2020 9:58:27 AM

General Fund (10)					
2820 Information Services		<u>Elementary</u>	<u>Secondary</u>	<u>Federal</u>	<u>Total</u>
<b>100 <u>Personnel Services – Salaries</u></b>					
100	Personnel Services – Salaries				79,056.00
<b>Total Personnel Services – Salaries</b>					<b>\$79,056.00</b>
<b>200 <u>Personnel Services – Employee Benefits</u></b>					
210	Group Insurance – Contracted Provider				542.96
220	Social Security Contributions				5,748.65
230	PSERS Retirement Contributions				26,428.43
250	Unemployment Compensation				17.75
260	Workers' Compensation				292.84
270	Group Insurance – Self-Insurance				14,410.00
291	Other Retirement Plans				3,750.00
<b>Total Personnel Services – Employee Benefits</b>					<b>\$51,190.63</b>
<b>Total 2820 Information Services</b>					<b>\$130,246.63</b>

LEA : 123467103     Souderton Area SD

Printed 1/2/2020 9:58:27 AM

General Fund (10)

2821 Supervision of Information Services	<u>Elementary</u>	<u>Secondary</u>	<u>Federal</u>	<u>Total</u>
100 <u>Personnel Services – Salaries</u>				
100 Personnel Services – Salaries				79,056.00
Total Personnel Services – Salaries				\$79,056.00
200 <u>Personnel Services – Employee Benefits</u>				
210 Group Insurance – Contracted Provider				542.96
220 Social Security Contributions				5,748.65
230 PSERS Retirement Contributions				26,428.43
250 Unemployment Compensation				17.75
260 Workers' Compensation				292.84
270 Group Insurance – Self-Insurance				14,410.00
291 Other Retirement Plans				3,750.00
Total Personnel Services – Employee Benefits				\$51,190.63
Total 2821 Supervision of Information Services				\$130,246.63

LEA : 123467103     Souderton Area SD

Printed 1/2/2020 9:58:27 AM

<b>General Fund (10)</b>				
<b>2830 Staff Services</b>	<b><u>Elementary</u></b>	<b><u>Secondary</u></b>	<b><u>Federal</u></b>	<b><u>Total</u></b>
<b>100 <u>Personnel Services – Salaries</u></b>				
100 Personnel Services – Salaries				333,395.82
<b>Total Personnel Services – Salaries</b>				<b>\$333,395.82</b>
<b>200 <u>Personnel Services – Employee Benefits</u></b>				
210 Group Insurance – Contracted Provider				1,360.61
220 Social Security Contributions				22,161.69
230 PSERS Retirement Contributions				107,576.12
240 Tuition Reimbursement				30,243.50
250 Unemployment Compensation				80.68
260 Workers' Compensation				1,247.35
270 Group Insurance – Self-Insurance				64,377.00
291 Other Retirement Plans				12,100.00
<b>Total Personnel Services – Employee Benefits</b>				<b>\$239,146.95</b>
<b>300 <u>Purchased Professional and Technical Services</u></b>				
329 Professional Educational Services – Other				8,181.75
360 Employee Training and Development Services				6,088.00
<b>Total Purchased Professional and Technical Services</b>				<b>\$14,269.75</b>
<b>500 <u>Other Purchased Services</u></b>				
549 Other Advertising/Public Relations				747.69
550 Printing and Binding				65.55
580 Travel				744.22
<b>Total Other Purchased Services</b>				<b>\$1,557.46</b>
<b>600 <u>Supplies</u></b>				
610 General Supplies				2,089.02
650 Supplies & Fees – Technology Related				17,564.94
<b>Total Supplies</b>				<b>\$19,653.96</b>
<b>800 <u>Other Objects</u></b>				
810 Dues and Fees				1,015.00
<b>Total Other Objects</b>				<b>\$1,015.00</b>
<b>Total 2830 Staff Services</b>				<b>\$609,038.94</b>

LEA : 123467103     Souderton Area SD

Printed 1/2/2020 9:58:27 AM

General Fund (10)				
2831 Supervision of Staff Services	<u>Elementary</u>	<u>Secondary</u>	<u>Federal</u>	<u>Total</u>
100 <u>Personnel Services – Salaries</u>				
100 Personnel Services – Salaries				230,023.77
Total Personnel Services – Salaries				\$230,023.77
200 <u>Personnel Services – Employee Benefits</u>				
210 Group Insurance – Contracted Provider				1,332.29
220 Social Security Contributions				14,972.42
230 PSERS Retirement Contributions				73,351.20
250 Unemployment Compensation				41.83
260 Workers' Compensation				856.60
270 Group Insurance – Self-Insurance				25,407.00
291 Other Retirement Plans				12,100.00
Total Personnel Services – Employee Benefits				\$128,061.34
300 <u>Purchased Professional and Technical Services</u>				
329 Professional Educational Services – Other				8,181.75
Total Purchased Professional and Technical Services				\$8,181.75
500 <u>Other Purchased Services</u>				
549 Other Advertising/Public Relations				747.69
550 Printing and Binding				65.55
580 Travel				437.65
Total Other Purchased Services				\$1,250.89
600 <u>Supplies</u>				
610 General Supplies				2,089.02
650 Supplies & Fees – Technology Related				17,564.94
Total Supplies				\$19,653.96
800 <u>Other Objects</u>				
810 Dues and Fees				1,015.00
Total Other Objects				\$1,015.00
Total 2831 Supervision of Staff Services				\$388,186.71

LEA : 123467103     Souderton Area SD

Printed 1/2/2020 9:58:27 AM

General Fund (10)

2834 Staff Development Services – Non-Instructional, Certified Staff Only	<u>Elementary</u>	<u>Secondary</u>	<u>Federal</u>	<u>Total</u>
200 <u>Personnel Services – Employee Benefits</u>				
240 Tuition Reimbursement				6,936.00
Total Personnel Services – Employee Benefits				\$6,936.00
Total 2834 Staff Development Services – Non-Instructional, Certified Staff Only				\$6,936.00

LEA : 123467103     Souderton Area SD

Printed 1/2/2020 9:58:27 AM

General Fund (10)

2835 Health Services

	<u>Elementary</u>	<u>Secondary</u>	<u>Federal</u>	<u>Total</u>
<b>100 <u>Personnel Services – Salaries</u></b>				
100 Personnel Services – Salaries				36,487.80
<b>Total Personnel Services – Salaries</b>				<b>\$36,487.80</b>
<b>200 <u>Personnel Services – Employee Benefits</u></b>				
210 Group Insurance – Contracted Provider				9.91
220 Social Security Contributions				2,575.65
230 PSERS Retirement Contributions				12,197.87
250 Unemployment Compensation				13.17
260 Workers' Compensation				138.43
270 Group Insurance – Self-Insurance				14,735.00
<b>Total Personnel Services – Employee Benefits</b>				<b>\$29,670.03</b>
<b>Total 2835 Health Services</b>				<b>\$66,157.83</b>



LEA : 123467103     Souderton Area SD

Printed 1/2/2020 9:58:27 AM

General Fund (10)

2836 Staff Development Services – Non-Instructional, Non-Certified Staff Only	<u>Elementary</u>	<u>Secondary</u>	<u>Federal</u>	<u>Total</u>
200 <u>Personnel Services – Employee Benefits</u>				
240 Tuition Reimbursement				23,307.50
Total Personnel Services – Employee Benefits				\$23,307.50
300 <u>Purchased Professional and Technical Services</u>				
360 Employee Training and Development Services				6,088.00
Total Purchased Professional and Technical Services				\$6,088.00
500 <u>Other Purchased Services</u>				
580 Travel				306.57
Total Other Purchased Services				\$306.57
Total 2836 Staff Development Services – Non-Instructional, Non-Certified Staff Only				\$29,702.07

LEA : 123467103     Souderton Area SD

Printed 1/2/2020 9:58:27 AM

General Fund (10)

2839 Other Staff Services

	<u>Elementary</u>	<u>Secondary</u>	<u>Federal</u>	<u>Total</u>
<b>100 <u>Personnel Services – Salaries</u></b>				
100 Personnel Services – Salaries				66,884.25
<b>Total Personnel Services – Salaries</b>				<b>\$66,884.25</b>
<b>200 <u>Personnel Services – Employee Benefits</u></b>				
210 Group Insurance – Contracted Provider				18.41
220 Social Security Contributions				4,613.62
230 PSERS Retirement Contributions				22,027.05
250 Unemployment Compensation				25.68
260 Workers' Compensation				252.32
270 Group Insurance – Self-Insurance				24,235.00
<b>Total Personnel Services – Employee Benefits</b>				<b>\$51,172.08</b>
<b>Total 2839 Other Staff Services</b>				<b>\$118,056.33</b>

LEA : 123467103     Souderton Area SD

Printed 1/2/2020 9:58:27 AM

General Fund (10)				
2840 Data Processing Services				
	<u>Elementary</u>	<u>Secondary</u>	<u>Federal</u>	<u>Total</u>
100 <u>Personnel Services – Salaries</u>				
100 Personnel Services – Salaries				251,244.21
Total Personnel Services – Salaries				\$251,244.21
200 <u>Personnel Services – Employee Benefits</u>				
210 Group Insurance – Contracted Provider				1,702.02
220 Social Security Contributions				18,520.92
230 PSERS Retirement Contributions				82,420.10
250 Unemployment Compensation				54.27
260 Workers' Compensation				937.62
270 Group Insurance – Self-Insurance				37,891.00
291 Other Retirement Plans				7,500.00
Total Personnel Services – Employee Benefits				\$149,025.93
300 <u>Purchased Professional and Technical Services</u>				
330 Other Professional Services				22,689.50
Total Purchased Professional and Technical Services				\$22,689.50
400 <u>Purchased Property Services</u>				
430 Repairs and Maintenance Services				92,364.32
Total Purchased Property Services				\$92,364.32
500 <u>Other Purchased Services</u>				
530 Communications				346,718.22
550 Printing and Binding				6.00
Total Other Purchased Services				\$346,724.22
600 <u>Supplies</u>				
610 General Supplies				73,465.38
650 Supplies & Fees – Technology Related				303,190.18
Total Supplies				\$376,655.56
700 <u>Property</u>				
752 Capital Equipment – Original and Additional				11,990.82
766 Capitalized Technology Equipment – Replacement				4,260.00
768 Capitalized Technology Software - Replacement				17,977.94
Total Property				\$34,228.76
800 <u>Other Objects</u>				
810 Dues and Fees				25.00
Total Other Objects				\$25.00
Total 2840 Data Processing Services				\$1,272,957.50

LEA : 123467103     Souderton Area SD

Printed 1/2/2020 9:58:27 AM

General Fund (10)

2900 Other Support Services	<u>Elementary</u>	<u>Secondary</u>	<u>Federal</u>	<u>Total</u>
500 <u>Other Purchased Services</u>				
595 IU Payments By Withholding				81,987.40
Total Other Purchased Services				\$81,987.40
Total 2900 Other Support Services				\$81,987.40

LEA : 123467103     Souderton Area SD

Printed 1/2/2020 9:58:27 AM

General Fund (10)

2910 Support Services Not Listed Elsewhere In the 2000 Series

Elementary                      Secondary                      Federal                      Total

500 Other Purchased Services

595 IU Payments By Withholding 81,987.40

**Total Other Purchased Services \$81,987.40**

**Total 2910 Support Services Not Listed Elsewhere In the 2000 Series \$81,987.40**

LEA : 123467103      Souderton Area SD

Printed 1/2/2020 9:58:33 AM

<b>General Fund (10)</b>	
<b>3000 Operation of Non-Instructional Services</b>	<b><u>Total</u></b>
<b>100 <u>Personnel Services – Salaries</u></b>	
100 Personnel Services – Salaries	669,473.49
<b>Total Personnel Services – Salaries</b>	<b>\$669,473.49</b>
<b>200 <u>Personnel Services – Employee Benefits</u></b>	
210 Group Insurance – Contracted Provider	230.74
220 Social Security Contributions	50,815.61
230 PSERS Retirement Contributions	157,856.88
250 Unemployment Compensation	367.66
260 Workers' Compensation	3,459.36
270 Group Insurance – Self-Insurance	37,936.00
291 Other Retirement Plans	1,450.00
<b>Total Personnel Services – Employee Benefits</b>	<b>\$252,116.25</b>
<b>300 <u>Purchased Professional and Technical Services</u></b>	
330 Other Professional Services	44,649.00
390 Other Purchased Professional and Technical Services	55,153.50
<b>Total Purchased Professional and Technical Services</b>	<b>\$99,802.50</b>
<b>400 <u>Purchased Property Services</u></b>	
430 Repairs and Maintenance Services	4,490.35
440 Rentals	6,081.06
<b>Total Purchased Property Services</b>	<b>\$10,571.41</b>
<b>500 <u>Other Purchased Services</u></b>	
510 Student Transportation Services	174,782.28
520 Insurance – General	6,457.00
550 Printing and Binding	2,180.89
580 Travel	5,816.70
599 Other Miscellaneous Purchased Services	57,623.47
<b>Total Other Purchased Services</b>	<b>\$246,860.34</b>
<b>600 <u>Supplies</u></b>	
610 General Supplies	108,549.15
630 Food	12,830.39
640 Books and Periodicals	43,550.00
650 Supplies & Fees – Technology Related	1,674.00
<b>Total Supplies</b>	<b>\$166,603.54</b>
<b>800 <u>Other Objects</u></b>	
810 Dues and Fees	25,315.22
860 Grants To Municipal and Community Service Organizations	2,116.11
890 Miscellaneous Expenditures	41,783.00
<b>Total Other Objects</b>	<b>\$69,214.33</b>
<b>Total 3000 Operation of Non-Instructional Services</b>	<b>\$1,514,641.86</b>

LEA : 123467103     Souderton Area SD

Printed 1/2/2020 9:58:33 AM

<b>General Fund (10)</b>				
<b>3200 Student Activities</b>	<u>Elementary</u>	<u>Secondary</u>	<u>Federal</u>	<u>Total</u>
<b>100 <u>Personnel Services – Salaries</u></b>				
100 Personnel Services – Salaries				669,473.49
<b>Total Personnel Services – Salaries</b>				<b>\$669,473.49</b>
<b>200 <u>Personnel Services – Employee Benefits</u></b>				
210 Group Insurance – Contracted Provider				230.74
220 Social Security Contributions				50,815.61
230 PSERS Retirement Contributions				157,856.88
250 Unemployment Compensation				367.66
260 Workers' Compensation				3,459.36
270 Group Insurance – Self-Insurance				37,936.00
291 Other Retirement Plans				1,450.00
<b>Total Personnel Services – Employee Benefits</b>				<b>\$252,116.25</b>
<b>300 <u>Purchased Professional and Technical Services</u></b>				
330 Other Professional Services				44,649.00
390 Other Purchased Professional and Technical Services				55,153.50
<b>Total Purchased Professional and Technical Services</b>				<b>\$99,802.50</b>
<b>400 <u>Purchased Property Services</u></b>				
430 Repairs and Maintenance Services				4,490.35
440 Rentals				6,081.06
<b>Total Purchased Property Services</b>				<b>\$10,571.41</b>
<b>500 <u>Other Purchased Services</u></b>				
510 Student Transportation Services				174,782.28
520 Insurance – General				6,457.00
550 Printing and Binding				2,180.89
580 Travel				5,816.70
599 Other Miscellaneous Purchased Services				57,623.47
<b>Total Other Purchased Services</b>				<b>\$246,860.34</b>
<b>600 <u>Supplies</u></b>				
610 General Supplies				107,124.75
630 Food				12,830.39
640 Books and Periodicals				43,550.00
650 Supplies & Fees – Technology Related				1,674.00
<b>Total Supplies</b>				<b>\$165,179.14</b>
<b>800 <u>Other Objects</u></b>				
810 Dues and Fees				25,315.22
860 Grants To Municipal and Community Service Organizations				2,116.11
890 Miscellaneous Expenditures				41,783.00
<b>Total Other Objects</b>				<b>\$69,214.33</b>
<b>Total 3200 Student Activities</b>				<b>\$1,513,217.46</b>

LEA : 123467103     Souderton Area SD

Printed 1/2/2020 9:58:33 AM

General Fund (10)				
3300 Community Services	<u>Elementary</u>	<u>Secondary</u>	<u>Federal</u>	<u>Total</u>
600 <u>Supplies</u>				
610 General Supplies			1,424.40	1,424.40
Total Supplies			\$1,424.40	\$1,424.40
Total 3300 Community Services			\$1,424.40	\$1,424.40



LEA : 123467103     Souderton Area SD

Printed 1/2/2020 9:58:38 AM

General Fund (10)

4000 Facilities Acquisition, Construction and Improvement Services	<u>Total</u>
400 <u>Purchased Property Services</u>	
450 Construction Services	26,229.24
<b>Total Purchased Property Services</b>	<b>\$26,229.24</b>
<b>Total 4000 Facilities Acquisition, Construction and Improvement Services</b>	<b>\$26,229.24</b>

LEA : 123467103     Souderton Area SD

Printed 1/2/2020 9:58:38 AM

General Fund (10)

4200 Existing Site Improvement Services	<u>Elementary</u>	<u>Secondary</u>	<u>Federal</u>	<u>Total</u>
400 <u>Purchased Property Services</u>				
450 Construction Services				26,229.24
<b>Total Purchased Property Services</b>				<b>\$26,229.24</b>
<b>Total 4200 Existing Site Improvement Services</b>				<b>\$26,229.24</b>

LEA : 123467103     Souderton Area SD

Printed 1/2/2020 9:58:42 AM

General Fund (10)

5000 Other Expenditures and Financing Uses

Total

800 Other Objects

830 Interest	1,874,143.13
880 Refunds of Prior Years' Receipts	1.51

<b>Total Other Objects</b>	<b>\$1,874,144.64</b>
----------------------------	-----------------------

900 Other Uses of Funds

910 Redemption of Principal	7,930,000.00
939 Other Fund Transfers	3,153,867.00
990 Miscellaneous Other Uses of Funds	1,305.76

<b>Total Other Uses of Funds</b>	<b>\$11,085,172.76</b>
----------------------------------	------------------------

<b>Total 5000 Other Expenditures and Financing Uses</b>	<b>\$12,959,317.40</b>
---	------------------------

LEA : 123467103     Souderton Area SD

Printed 1/2/2020 9:58:42 AM

General Fund (10)

5100 Debt Service / Other Expenditures and Financing Uses	<u>Elementary</u>	<u>Secondary</u>	<u>Federal</u>	<u>Total</u>
800 <u>Other Objects</u>				
830 Interest				1,874,143.13
880 Refunds of Prior Years' Receipts				1.51
<b>Total Other Objects</b>				<b>\$1,874,144.64</b>
900 <u>Other Uses of Funds</u>				
910 Redemption of Principal				7,930,000.00
<b>Total Other Uses of Funds</b>				<b>\$7,930,000.00</b>
<b>Total 5100 Debt Service / Other Expenditures and Financing Uses</b>				<b>\$9,804,144.64</b>

LEA : 123467103     Souderton Area SD

Printed 1/2/2020 9:58:42 AM

General Fund (10)

5110 Debt Service	<u>Elementary</u>	<u>Secondary</u>	<u>Federal</u>	<u>Total</u>
800 <u>Other Objects</u>				
830 Interest				1,874,143.13
Total Other Objects				\$1,874,143.13
900 <u>Other Uses of Funds</u>				
910 Redemption of Principal				7,930,000.00
Total Other Uses of Funds				\$7,930,000.00
Total 5110 Debt Service				\$9,804,143.13

LEA : 123467103     Souderton Area SD

Printed 1/2/2020 9:58:42 AM

General Fund (10)

5130 Refund of Prior Year Revenues / Receipts	<u>Elementary</u>	<u>Secondary</u>	<u>Federal</u>	<u>Total</u>
800 <u>Other Objects</u>				
880 Refunds of Prior Years' Receipts				1.51
Total Other Objects				\$1.51
Total 5130 Refund of Prior Year Revenues / Receipts				\$1.51

LEA : 123467103     Souderton Area SD

Printed 1/2/2020 9:58:42 AM

General Fund (10)

5200 Interfund Transfers – Out	<u>Elementary</u>	<u>Secondary</u>	<u>Federal</u>	<u>Total</u>
900 <u>Other Uses of Funds</u>				
939 Other Fund Transfers				3,153,867.00
Total Other Uses of Funds				\$3,153,867.00
Total 5200 Interfund Transfers – Out				\$3,153,867.00

LEA : 123467103     Souderton Area SD

Printed 1/2/2020 9:58:42 AM

General Fund (10)

5230 Capital Projects Fund Transfers	<u>Elementary</u>	<u>Secondary</u>	<u>Federal</u>	<u>Total</u>
900 <u>Other Uses of Funds</u>				
939 Other Fund Transfers				3,153,867.00
Total Other Uses of Funds				\$3,153,867.00
Total 5230 Capital Projects Fund Transfers				\$3,153,867.00



LEA : 123467103     Souderton Area SD

Printed 1/2/2020 9:58:42 AM

General Fund (10)

5520 Special Items – Losses	<u>Elementary</u>	<u>Secondary</u>	<u>Federal</u>	<u>Total</u>
900 <u>Other Uses of Funds</u>				
990 Miscellaneous Other Uses of Funds				1,305.76
Total Other Uses of Funds				\$1,305.76
Total 5520 Special Items – Losses				\$1,305.76

LEA : 123467103     Souderton Area SD

Printed 1/2/2020 9:58:31 AM

Other Capital Projects Fund (39)

2000 Support Services

Total

400 Purchased Property Services

430 Repairs and Maintenance Services

12,600.00

Total Purchased Property Services

\$12,600.00

Total 2000 Support Services

\$12,600.00

LEA : 123467103     Souderton Area SD

Printed 1/2/2020 9:58:31 AM

Other Capital Projects Fund (39)

2600 Operation and Maintenance of Plant Services

<u>Elementary</u>	<u>Secondary</u>	<u>Federal</u>	<u>Total</u>
-------------------	------------------	----------------	--------------

400 Purchased Property Services

430 Repairs and Maintenance Services			12,600.00
--------------------------------------	--	--	-----------

<b>Total Purchased Property Services</b>			<b>\$12,600.00</b>
--	--	--	--------------------

<b>Total 2600 Operation and Maintenance of Plant Services</b>			<b>\$12,600.00</b>
---	--	--	--------------------

LEA : 123467103     Souderton Area SD

Printed 1/2/2020 9:58:31 AM

Other Capital Projects Fund (39)

2620 Operation of Buildings Services

<u>Elementary</u>	<u>Secondary</u>	<u>Federal</u>	<u>Total</u>
-------------------	------------------	----------------	--------------

400 Purchased Property Services

430 Repairs and Maintenance Services				12,600.00
--------------------------------------	--	--	--	-----------

<b>Total Purchased Property Services</b>				<b>\$12,600.00</b>
--	--	--	--	--------------------

<b>Total 2620 Operation of Buildings Services</b>				<b>\$12,600.00</b>
---	--	--	--	--------------------

LEA : 123467103     Souderton Area SD

Printed 1/2/2020 9:58:39 AM

Other Capital Projects Fund (39)

4000 Facilities Acquisition, Construction and Improvement Services		<u>Total</u>
300 <u>Purchased Professional and Technical Services</u>		
330 Other Professional Services	151,609.50	
Total Purchased Professional and Technical Services	\$151,609.50	
400 <u>Purchased Property Services</u>		
430 Repairs and Maintenance Services	17,250.00	
440 Rentals	180.00	
450 Construction Services	2,007,192.11	
Total Purchased Property Services	\$2,024,622.11	
500 <u>Other Purchased Services</u>		
549 Other Advertising/Public Relations	1,838.60	
Total Other Purchased Services	\$1,838.60	
600 <u>Supplies</u>		
610 General Supplies	34,190.39	
Total Supplies	\$34,190.39	
700 <u>Property</u>		
758 Capitalized Technology Software - Original	4,249.00	
Total Property	\$4,249.00	
Total 4000 Facilities Acquisition, Construction and Improvement Services	\$2,216,509.60	

LEA : 123467103     Souderton Area SD

Printed 1/2/2020 9:58:39 AM

Other Capital Projects Fund (39)

4200 Existing Site Improvement Services

<u>Elementary</u>	<u>Secondary</u>	<u>Federal</u>	<u>Total</u>
-------------------	------------------	----------------	--------------

300 Purchased Professional and Technical Services

330 Other Professional Services			14,900.00
---------------------------------	--	--	-----------

<b>Total Purchased Professional and Technical Services</b>			<b>\$14,900.00</b>
--	--	--	--------------------

400 Purchased Property Services

430 Repairs and Maintenance Services			1,200.00
--------------------------------------	--	--	----------

450 Construction Services			287,557.01
---------------------------	--	--	------------

<b>Total Purchased Property Services</b>			<b>\$288,757.01</b>
--	--	--	---------------------

500 Other Purchased Services

549 Other Advertising/Public Relations			186.00
--	--	--	--------

<b>Total Other Purchased Services</b>			<b>\$186.00</b>
---------------------------------------	--	--	-----------------

600 Supplies

610 General Supplies			2,412.89
----------------------	--	--	----------

<b>Total Supplies</b>			<b>\$2,412.89</b>
-----------------------	--	--	-------------------

<b>Total 4200 Existing Site Improvement Services</b>			<b>\$306,255.90</b>
--	--	--	---------------------

LEA : 123467103      Souderton Area SD

Printed 1/2/2020 9:58:39 AM

Other Capital Projects Fund (39)

4600 Existing Building Improvement Services	<u>Elementary</u>	<u>Secondary</u>	<u>Federal</u>	<u>Total</u>
300 <u>Purchased Professional and Technical Services</u>				
330 Other Professional Services				136,709.50
<b>Total Purchased Professional and Technical Services</b>				<b>\$136,709.50</b>
400 <u>Purchased Property Services</u>				
430 Repairs and Maintenance Services				16,050.00
440 Rentals				180.00
450 Construction Services				1,719,635.10
<b>Total Purchased Property Services</b>				<b>\$1,735,865.10</b>
500 <u>Other Purchased Services</u>				
549 Other Advertising/Public Relations				1,652.60
<b>Total Other Purchased Services</b>				<b>\$1,652.60</b>
600 <u>Supplies</u>				
610 General Supplies				31,777.50
<b>Total Supplies</b>				<b>\$31,777.50</b>
700 <u>Property</u>				
758 Capitalized Technology Software - Original				4,249.00
<b>Total Property</b>				<b>\$4,249.00</b>
<b>Total 4600 Existing Building Improvement Services</b>				<b>\$1,910,253.70</b>

LEA : 123467103     Souderton Area SD

Printed 1/2/2020 9:58:55 AM

	<u>General Fund(10)</u>	<u>Public Purpose Trust(27)</u>	<u>Other Compt Approved (28)</u>	<u>Athletic / Activity(29)</u>	<u>Capital Reserve (690. 1850)(31)</u>
<b>1000 <u>Instruction</u></b>					
1100 Regular Programs - Elementary / Secondary	53,470,408.42				
1200 Special Programs - Elementary / Secondary	21,418,967.66				
1300 Vocational Education	2,043,097.38				
1400 Other Instructional Programs - Elementary / Secondary	728,222.95				
1500 Nonpublic School Programs	4,827.96				
1600 Adult Education Programs	185,309.04				
<b>Total Instruction</b>	<b>\$77,850,833.41</b>				
<b>2000 <u>Support Services</u></b>					
2100 Support Services - Students	4,815,248.77				
2200 Support Services - Instructional Staff	4,349,696.76				
2300 Support Services - Administration	5,124,539.77				
2400 Support Services - Pupil Health	1,289,478.65				
2500 Support Services - Business	949,210.25				
2600 Operation and Maintenance of Plant Services	8,739,604.92				
2700 Student Transportation Services	8,117,177.03				
2800 Support Services - Central	2,147,093.73				
2900 Other Support Services	81,987.40				
<b>Total Support Services</b>	<b>\$35,614,037.28</b>				
<b>3000 <u>Operation of Non-Instructional Services</u></b>					
3200 Student Activities	1,513,217.46				
3300 Community Services	1,424.40				
<b>Total Operation of Non-Instructional Services</b>	<b>\$1,514,641.86</b>				
<b>4000 <u>Facilities Acquisition, Construction and Improvement Services</u></b>					
4200 Existing Site Improvement Services	26,229.24				
4600 Existing Building Improvement Services					
<b>Total Facilities Acquisition, Construction and Improvement Services</b>	<b>\$26,229.24</b>				
<b>5000 <u>Other Expenditures and Financing Uses</u></b>					
5100 Debt Service / Other Expenditures and Financing Uses	9,804,144.64				
5200 Interfund Transfers - Out	3,153,867.00				
5500 Special and Extraordinary Items	1,305.76				
<b>Total Other Expenditures and Financing Uses</b>	<b>\$12,959,317.40</b>				
<b>TOTAL ACTUAL EXPENDITURES &amp; OTHER FINANCING USES</b>	<b>\$127,965,059.19</b>				



LEA : 123467103     Souderton Area SD

Printed 1/2/2020 9:58:55 AM

	<u>Capital Reserve (1431)(32)</u>	<u>Other Capital Projects Fund(39)</u>	<u>Debt Service(40)</u>	<u>Permanent(90)</u>	<u>Total</u>
<b>1000 Instruction</b>					
1100 Regular Programs - Elementary / Secondary					53,470,408.42
1200 Special Programs - Elementary / Secondary					21,418,967.66
1300 Vocational Education					2,043,097.38
1400 Other Instructional Programs - Elementary / Secondary					728,222.95
1500 Nonpublic School Programs					4,827.96
1600 Adult Education Programs					185,309.04
<b>Total Instruction</b>					<b>\$77,850,833.41</b>
<b>2000 Support Services</b>					
2100 Support Services - Students					4,815,248.77
2200 Support Services - Instructional Staff					4,349,696.76
2300 Support Services - Administration					5,124,539.77
2400 Support Services - Pupil Health					1,289,478.65
2500 Support Services - Business					949,210.25
2600 Operation and Maintenance of Plant Services		12,600.00			8,752,204.92
2700 Student Transportation Services					8,117,177.03
2800 Support Services - Central					2,147,093.73
2900 Other Support Services					81,987.40
<b>Total Support Services</b>		<b>\$12,600.00</b>			<b>\$35,626,637.28</b>
<b>3000 Operation of Non-Instructional Services</b>					
3200 Student Activities					1,513,217.46
3300 Community Services					1,424.40
<b>Total Operation of Non-Instructional Services</b>					<b>\$1,514,641.86</b>
<b>4000 Facilities Acquisition, Construction and Improvement Services</b>					
4200 Existing Site Improvement Services		306,255.90			332,485.14
4600 Existing Building Improvement Services		1,910,253.70			1,910,253.70
<b>Total Facilities Acquisition, Construction and Improvement Services</b>		<b>\$2,216,509.60</b>			<b>\$2,242,738.84</b>
<b>5000 Other Expenditures and Financing Uses</b>					
5100 Debt Service / Other Expenditures and Financing Uses					9,804,144.64
5200 Interfund Transfers - Out					3,153,867.00
5500 Special and Extraordinary Items					1,305.76
<b>Total Other Expenditures and Financing Uses</b>					<b>\$12,959,317.40</b>
<b>TOTAL ACTUAL EXPENDITURES &amp; OTHER FINANCING USES</b>		<b>\$2,229,109.60</b>			<b>\$130,194,168.79</b>

LEA : 123467103     Souderton Area SD

Printed 1/2/2020 9:59:03 AM

**PSERS Salary Data (Salary Data should relate to the General Fund only)**

Amount	Description	Amount
	Total Salary Base for salaries subject to PSERS withholding	51,242,808.75
	Total Federally Funded salaries subject to PSERS withholding	930,841.91

**Title I Expenditure Data**

Amount	Description	Amount
	Expenditures Funded with Current Title I Funds	343,429.83
	Expenditures Funded with Carry over Title I Funds	
<b>Total Title I Expenditure Data</b>		<b>\$343,429.83</b>

Benefits for Staff Relative to Collective Bargaining Agreements

	OBJECT	COVERED	NOT COVERED	TOTAL
10 General Fund				
	211 Medical Insurance			
	212 Dental Insurance			
	215 Eye Care Insurance			
	216 Prescription Insurance			
	271 Self-Insurance Medical Benefits	6,938,747.00	813,740.00	7,752,487.00
	272 Self-Insurance Dental Benefits	536,964.00	71,590.00	608,554.00
	275 Self-Insurance Eye Care Benefits	77,241.00	10,198.00	87,439.00
	276 Self-Insurance Prescription Benefits			
	FUND TOTAL	\$7,552,952.00	\$895,528.00	\$8,448,480.00
50 Enterprise Fund				
	211 Medical Insurance			
	212 Dental Insurance			
	215 Eye Care Insurance			
	216 Prescription Insurance			
	271 Self-Insurance Medical Benefits		130,791.93	130,791.93
	272 Self-Insurance Dental Benefits		7,952.89	7,952.89
	275 Self-Insurance Eye Care Benefits		1,557.47	1,557.47
	276 Self-Insurance Prescription Benefits			
	FUND TOTAL		\$140,302.29	\$140,302.29
60 Internal Service Fund	No Self Insurance data to report			
	211 Medical Insurance			
	212 Dental Insurance			
	215 Eye Care Insurance			
	216 Prescription Insurance			
	271 Self-Insurance Medical Benefits			
	272 Self-Insurance Dental Benefits			
	275 Self-Insurance Eye Care Benefits			
	276 Self-Insurance Prescription Benefits			
	FUND TOTAL			
Total of All Funds		\$7,552,952.00	\$1,035,830.29	\$8,588,782.29

LEA : 123467103     Souderton Area SD

Printed 1/2/2020 9:59:09 AM

Function	Special Education (Prior Year)	Nonspecial Education (Prior Year)	Total (Prior Year)	Special Education (Current Year)	Nonspecial Education (Current Year)	Total (Current Year)
2120 Guidance Services	469,471.32	1,679,138.86	2,148,610.18	494,869.50	1,769,979.45	2,264,848.95
2140 Psychological Services	217,251.04	777,032.91	994,283.95	229,199.84	819,769.69	1,048,969.53
2150 Speech Pathology and Audiology Services						
2160 Social Work Services	236,720.18	236,720.18	473,440.36	229,774.06	229,774.06	459,548.12
2260 Instruction and Curriculum Development Services	229,232.17	819,885.29	1,049,117.46	245,650.03	878,606.38	1,124,256.41
2350 Legal and Accounting Services	30,018.68	107,366.57	137,385.25	28,538.88	102,073.84	130,612.72
2420 Medical Services						
2440 Nursing Services	281,716.44	1,007,603.65	1,289,320.09	280,269.77	1,002,429.42	1,282,699.19
2700 Student Transportation Services	2,709,817.47	5,011,122.80	7,720,940.27	3,246,953.08	4,870,223.95	8,117,177.03
Total	\$4,174,227.30	\$9,638,870.26	\$13,813,097.56	\$4,755,255.16	\$9,672,856.79	\$14,428,111.95

LEA : 123467103     Souderton Area SD

Printed 1/2/2020 9:59:12 AM

(PRINCIPAL AMOUNTS ONLY)								
<u>GOVERNMENTAL FUNDS/ ACTIVITIES</u>	Short-Term Borrowing	General Obligation Bonds/Notes	Authority Building Obligations	Other Long-Term Debt	Other Post- Employment Benefits (OPEB)	Compensated Absences	Net Pension Liability	Total
1. Debt at Beginning of Fiscal Year		60,755,000.00		150,254.00	14,522,057.00	3,074,589.00	186,823,805.00	265,325,705.00
2. Additional Debt Incurred During Year					326,927.00	18,934.00		345,861.00
3. Retirements and Repayments		7,930,000.00		75,127.00	1,485,913.00	263,634.00	2,109,491.00	11,864,165.00
4. Debt at End of Fiscal Year		52,825,000.00		75,127.00	13,363,071.00	2,829,889.00	184,714,314.00	253,807,401.00
5. Accreted Interest at End Of Fiscal Year								
6. Total Debt and Accreted Interest		52,825,000.00		75,127.00	13,363,071.00	2,829,889.00	184,714,314.00	253,807,401.00
7. Current Portion P&I - Due within 1 year		9,809,193.76		75,127.00		213,268.00		10,097,588.76
8. Interest Paid during current fiscal year		1,874,550.01						1,874,550.01

(PRINCIPAL AMOUNTS ONLY)								
<u>PROPRIETARY FUNDS</u>	Short-Term Borrowing	General Obligation Bonds/Notes	Authority Building Obligations	Other Long-Term Debt	Other Post- Employment Benefits (OPEB)	Compensated Absences	Net Pension Liability	Total
1. Debt at Beginning of Fiscal Year					146,153.00		3,076,726.00	3,222,879.00
2. Additional Debt Incurred During Year					5,251.00			5,251.00
3. Retirements and Repayments					11,501.00		35,505.00	47,006.00
4. Debt at End of Fiscal Year					139,903.00		3,041,221.00	3,181,124.00
5. Accreted Interest at End Of Fiscal Year								
6. Total Debt and Accreted Interest					139,903.00		3,041,221.00	3,181,124.00
7. Current Portion P&I - Due within 1 year								
8. Interest Paid during current fiscal year								

LEA : 123467103     Souderton Area SD

Printed 1/2/2020 9:59:12 AM

Total Principal and Interest Payments Made by Your School - All Funds

Function	Fund		Principal (910)	Principal (920)	Interest (830)	Total (Principal +Interest)	Misc Other Uses (990)
5110	10	General Fund	7,930,000.00		1,874,143.13	9,804,143.13	
5110	20	Special Revenue Funds					
5110	30	Capital Projects Funds					
5110	40	Debt Service Fund					
5110	90	Permanent Fund					
5120	10	General Fund					
5120	20	Special Revenue Funds					
5120	30	Capital Projects Funds					
5120	40	Debt Service Fund					
Total Debt Payments - Governmental Funds			\$7,930,000.00		\$1,874,143.13	\$9,804,143.13	

Function	Fund		Principal (910)	Principal (920)	Interest (830)	Total (Principal +Interest)
5110	50	Enterprise Fund				
5110	60	Internal Service Fund				
5120	50	Enterprise Fund				
5120	60	Internal Service Fund				
Total Debt Payments - Proprietary Funds						

LEA : 123467103     Souderton Area SD

Printed 1/2/2020 9:59:12 AM

<u>Debt Details</u> <u>Governmental Funds/ Activities</u>		Principal Amounts Only				Current Portion Due Within One Year (Principal and Interest)	Interest Paid During Fiscal Year
Debt Category	Debt Issue Date (MM/YYYY)	Debt at Beginning of Fiscal Year	Additions	Reductions / Repayments	Debt at End of Fiscal Year		
General Obligation Bonds/Notes – CIB	01/2017	21,370,000.00		75,000.00	21,295,000.00	4,110,575.00	852,943.75
General Obligation Bonds/Notes – CIB	01/2015	13,040,000.00		3,970,000.00	9,070,000.00	4,173,600.00	403,687.50
General Obligation Bonds/Notes – CIB	04/2015	3,985,000.00		580,000.00	3,405,000.00	661,755.00	86,755.00
General Obligation Bonds/Notes – CIB	01/2014	9,685,000.00		5,000.00	9,680,000.00	439,693.76	202,131.26
General Obligation Bonds/Notes – CIB	09/2013	9,530,000.00		155,000.00	9,375,000.00	423,570.00	266,132.50
General Obligation Bonds/Notes – CIB	06/2009	3,145,000.00		3,145,000.00			62,900.00
Other Long Term Debt/Liabilities		150,254.00		75,127.00	75,127.00	75,127.00	
Compensated Absences		3,074,589.00	18,934.00	263,634.00	2,829,889.00	213,268.00	
Other Post-Employment Benefits (OPEB)		14,522,057.00	326,927.00	1,485,913.00	13,363,071.00		
Net Pension Liability		186,823,805.00		2,109,491.00	184,714,314.00		
<b>Totals for Debt Entered:</b>		<b>\$265,325,705.00</b>	<b>\$345,861.00</b>	<b>\$11,864,165.00</b>	<b>\$253,807,401.00</b>	<b>\$10,097,588.76</b>	<b>\$1,874,550.01</b>

<u>Bond Details</u> <u>Proprietary Funds</u>		Principal Amounts Only				Current Portion Due Within One Year (Principal and Interest)	Interest Paid During Fiscal Year
Debt Category	Debt Issue Date (MM/YYYY)	Debt at Beginning of Fiscal Year	Additions	Reductions / Repayments	Debt at End of Fiscal Year		
Other Post-Employment Benefits (OPEB)		146,153.00	5,251.00	11,501.00	139,903.00		
Net Pension Liability		3,076,726.00		35,505.00	3,041,221.00		
<b>Totals for Debt Entered:</b>		<b>\$3,222,879.00</b>	<b>\$5,251.00</b>	<b>\$47,006.00</b>	<b>\$3,181,124.00</b>		

LEA : 123467103     Souderton Area SD

Printed 1/2/2020 9:59:16 AM

General Fund (10)

Section 1: Tuition/Purchased Services as Reported within Expenditure Detail	Amount
Tuition Reported in General Fund Expenditures 1000-560	10,830,553.78
Purchased Services in General Fund Expenditures 1000-594 and 1000-597	4,381.71
<b>Section 1 Total</b>	<b>\$10,834,935.49</b>

Section 2: Tuition Paid to Institution Types During Fiscal Year	Tuition Paid For Nonspecial Education	Tuition Paid For Special Education	Total
1 1306 Institutions			
2 Institutionalized Children's Programs			
3 Juveniles Incarcerated in Adult Facilities			
4 Residential Treatment Facilities		1,168,904.00	1,168,904.00
5 Other Local Education Agencies	69,473.56	63,918.79	133,392.35
6 Brick and Mortar Charter Schools	2,424,907.62	1,055,840.15	3,480,747.77
7 Cyber Charter Schools	612,480.69	251,579.74	864,060.43
8 Career and Technology Centers	2,043,097.38		2,043,097.38
9 Approved Private Schools		339,452.41	339,452.41
10 PA Chartered Schools for the Deaf and Blind			
11 Private Residential Rehabilitative Institutions	1,462,583.29	2,041.13	1,464,624.42
12 Juvenile Detention Centers			
13 Special Program Jointures			
14 Other Tuition Not Included Elsewhere In This Section		1,340,656.73	1,340,656.73
<b>Section 2 Total</b>	<b>\$6,612,542.54</b>	<b>\$4,222,392.95</b>	<b>\$10,834,935.49</b>



LEA : 123467103      Souderton Area SD

Printed 1/2/2020 9:59:23 AM

Food Service / Cafeteria Operations Fund (51)

3000 Operation of Non-Instructional Services		Total
100 <u>Personnel Services – Salaries</u>		
100 Personnel Services – Salaries		867,851.02
Total Personnel Services – Salaries		\$867,851.02
200 <u>Personnel Services – Employee Benefits</u>		
210 Group Insurance – Contracted Provider		465.28
220 Social Security Contributions		64,370.55
230 PSERS Retirement Contributions		330,967.43
250 Unemployment Compensation		472.49
260 Workers' Compensation		4,690.43
270 Group Insurance – Self-Insurance		140,302.29
280 Other Post-Employment Benefits (OPEB)		(50,090.00)
Total Personnel Services – Employee Benefits		\$491,178.47
300 <u>Purchased Professional and Technical Services</u>		
330 Other Professional Services		1,045.00
340 Technical Services		450.00
Total Purchased Professional and Technical Services		\$1,495.00
400 <u>Purchased Property Services</u>		
420 Utility Services		927.38
430 Repairs and Maintenance Services		95,828.06
Total Purchased Property Services		\$96,755.44
500 <u>Other Purchased Services</u>		
530 Communications		2,250.88
540 Advertising		56.32
541 Advertising Related to Federal Grant Awards		454.07
Total Other Purchased Services		\$2,761.27
600 <u>Supplies</u>		
610 General Supplies		84,082.86
620 Energy		8,712.54
630 Food		1,111,431.66
640 Books and Periodicals		394.00
650 Supplies & Fees – Technology Related		32,231.99
Total Supplies		\$1,236,853.05
700 <u>Property</u>		
740 Depreciation		50,289.75
Total Property		\$50,289.75
800 <u>Other Objects</u>		
810 Dues and Fees		1,771.38
Total Other Objects		\$1,771.38
Total 3000 Operation of Non-Instructional Services		\$2,748,955.38

LEA : 123467103     Souderton Area SD

Printed 1/2/2020 9:59:23 AM

Food Service / Cafeteria Operations Fund (51)

3100 Food Services	Elementary	Secondary	Federal	Total
100 <u>Personnel Services – Salaries</u>				
100 Personnel Services – Salaries				867,851.02
Total Personnel Services – Salaries				\$867,851.02
200 <u>Personnel Services – Employee Benefits</u>				
210 Group Insurance – Contracted Provider				465.28
220 Social Security Contributions				64,370.55
230 PSERS Retirement Contributions				330,967.43
250 Unemployment Compensation				472.49
260 Workers' Compensation				4,690.43
270 Group Insurance – Self-Insurance				140,302.29
280 Other Post-Employment Benefits (OPEB)				(50,090.00)
Total Personnel Services – Employee Benefits				\$491,178.47
300 <u>Purchased Professional and Technical Services</u>				
330 Other Professional Services				1,045.00
340 Technical Services				450.00
Total Purchased Professional and Technical Services				\$1,495.00
400 <u>Purchased Property Services</u>				
420 Utility Services				927.38
430 Repairs and Maintenance Services				95,828.06
Total Purchased Property Services				\$96,755.44
500 <u>Other Purchased Services</u>				
530 Communications				2,250.88
540 Advertising				56.32
541 Advertising Related to Federal Grant Awards				454.07
Total Other Purchased Services				\$2,761.27
600 <u>Supplies</u>				
610 General Supplies				84,082.86
620 Energy				8,712.54
630 Food				1,111,431.66
640 Books and Periodicals				394.00
650 Supplies & Fees – Technology Related				32,231.99
Total Supplies				\$1,236,853.05
700 <u>Property</u>				
740 Depreciation				50,289.75
Total Property				\$50,289.75
800 <u>Other Objects</u>				
810 Dues and Fees				1,771.38
Total Other Objects				\$1,771.38
Total 3100 Food Services				\$2,748,955.38

LEA : 123467103     Souderton Area SD

Printed 1/2/2020 9:59:19 AM

Internal Service Fund (60)

2000 Support Services

Total

800 Other Objects

820 Claims and Judgments Against the LEA

10,817,735.00

Total Other Objects	\$10,817,735.00
Total 2000 Support Services	\$10,817,735.00

Page 148

LEA : 123467103     Souderton Area SD

Printed 1/2/2020 9:59:19 AM

Internal Service Fund (60)

2830 Staff Services

Elementary

Secondary

Federal

Total

800 Other Objects

820 Claims and Judgments Against the LEA

10,817,735.00

**Total Other Objects**

**\$10,817,735.00**

**Total 2830 Staff Services**

**\$10,817,735.00**

LEA : 123467103     Souderton Area SD

Printed 1/2/2020 9:59:19 AM

Internal Service Fund (60)

2835 Health Services

<u>Elementary</u>	<u>Secondary</u>	<u>Federal</u>	<u>Total</u>
-------------------	------------------	----------------	--------------

800 Other Objects

820 Claims and Judgments Against the LEA				10,817,735.00
--	--	--	--	---------------

<b>Total Other Objects</b>				<b>\$10,817,735.00</b>
----------------------------	--	--	--	------------------------

<b>Total 2835 Health Services</b>				<b>\$10,817,735.00</b>
-----------------------------------	--	--	--	------------------------

	<u>Food Service(51)</u>	<u>Child Care Operations(52)</u>	<u>Other Enterprise(58)</u>	<u>Internal Service(60)</u>	<u>Total</u>
<b>2000 <u>Support Services</u></b>					
2800 Support Services - Central				10,817,735.00	10,817,735.00
<b>Total Support Services</b>				<b>\$10,817,735.00</b>	<b>\$10,817,735.00</b>
<b>3000 <u>Operation of Non-Instructional Services</u></b>					
3100 Food Services	2,748,955.38				2,748,955.38
<b>Total Operation of Non-Instructional Services</b>	<b>\$2,748,955.38</b>				<b>\$2,748,955.38</b>
<b>TOTAL ACTUAL EXPENDITURES &amp; OTHER FINANCING USES</b>	<b>\$2,748,955.38</b>			<b>\$10,817,735.00</b>	<b>\$13,566,690.38</b>

LEA : 123467103     Souderton Area SD

Printed 1/2/2020 9:59:44 AM

Fund	School	School Number	Local Personnel	Local Nonpersonnel	State Personnel	State Nonpersonnel	Federal Personnel	Federal Nonpersonnel	Total	Explanation
10										
	E M Crouthamel El Sch	3357	4,048,677.01	663,183.47	1,366,911.67	226,083.45	260,989.23	64,457.14	6,630,301.97	
	Franconia El Sch	3266	4,463,057.91	898,650.26	1,510,661.70	306,199.84	268,164.07	47,936.54	7,494,670.32	
	Indian Crest MS	8062	7,088,961.35	1,461,335.45	2,402,254.17	499,795.71	128,206.80	73,317.63	11,653,871.11	
	Indian Valley MS	4722	7,029,176.81	1,477,821.16	2,385,879.60	506,438.82	139,809.34	79,952.78	11,619,078.51	
	Oak Ridge El Sch	7262	5,119,431.43	911,480.01	1,730,078.39	310,657.46	113,541.52	49,241.63	8,234,430.44	
	Salford Hills El Sch	8282	4,509,267.55	825,286.16	1,524,399.06	281,263.00	102,518.14	44,460.92	7,287,194.83	
	Souderton Area SHS	3354	19,494,213.92	4,556,378.91	6,740,524.23	1,555,728.94	424,558.03	216,515.93	32,987,919.96	
	Vernfield El Sch	7752	4,965,170.60	896,409.83	1,677,664.20	305,346.40	108,759.94	47,167.91	8,000,518.88	
	West Broad Street El Sch	4900	4,689,824.05	794,694.13	1,583,803.26	270,839.53	260,031.97	42,830.79	7,642,023.73	
Total			61,407,780.63	12,485,239.38	20,922,176.28	4,262,353.15	1,806,579.04	665,881.27	101,550,009.75	