

BOND UPDATE #154

5.6.22

Here's what is going on with our bond projects:

1. Community members had the opportunity to watch a pre-filmed virtual tour of the FHS construction site during our weekly Facebook Live chat on Thursday. It allowed us to provide a safe way for anyone to get a peek behind the scenes of the new school. Thanks to Cornerstone General Contractors Superintendent Kurt Belanger, FHS Vice Principal Eric Tripp and Director of Maintenance and Facilities Jamie Plenkovich for being our guides during the video.
2. Work on the FHS campus has continued to progress during the past week. Some of the highlights are outlined below:

Grandstands

- Hardscape (non-plant landscape design elements) installation around the concessions and restroom area is ongoing.
- Grandstands installation should begin between May 16-23.

Athletic Wing

- The temporary wall at the west end of the Main Gym is now weatherized and will remain in this condition until the CTE Wing is constructed next year.
- Framing work is about 90% complete.
- Mechanical and electrical installation is ongoing and expected to run through mid-late May.
- Here's an interesting fact: The ductwork (tubes and pipes that distribute air through the building) over the kitchen is now being installed, and when it's complete, there will be about 25,000 pounds of it in the overhead space above the kitchen alone. When the PEMB is complete, there will be about 90,000 pounds of ductwork in that building.
- The switchgear (main electrical panels) that will energize the facility has now been delivered. The building is expected to be energized the beginning of June.
- Sound attenuation panels, which reduce echo, are now being installed in the Auxiliary Gym. This work should be completed next week.
- Painting of the overhead spaces in the PE, Main Gym and Auxiliary Gym is now finished.
- Sheetrock work in the Main Gym started this week and is now about 70% complete. Now that the walls are primarily covered with sheetrock, the gym feels huge.
- Framing in the Auxiliary Gym started this week and is about half finished.

Academic Wing

- Framing is finished on the first and second floors, and about 75% complete on the third floor. Third floor activities will slow down a bit, as crews are now more focused on the Athletic Wing, since it will be the first area to open to students and staff this fall.
 - The in-wall electrical and mechanical installation is finished on the first and second floors, and 70% complete on the third floor.
 - Door frames have been completely installed on the first two floors. The third floor is about 75% complete.
 - Painting is finished on the west end of the first floor, and about 70% on the west end of the second floor.
 - The ceiling grid is about 75% installed on the west end of the first floor and 25% installed on the west end of the second floor.
 - Cabinet installation is ongoing and making good progress.
 - The common area stairs should be close to completion by the end of May.
 - Siding work has made good progress and will likely be complete around the entire commons and academic wing by the end of June.
 - Windows are substantially complete, with just a small balance of glass remaining to be installed.
 - Installation of the storefront systems (the large windows that close in the stairwells and eventually the commons area) are moving along nicely. We anticipate this work to be close to finishing towards the end of June.
 - Bathroom tile installation will get started next week. This is a very exciting time in the project when the installation of interior finishes really start to provide a glimpse of what the final school will look like when complete.
3. At the end of this week's update, you will find several photos of the Ferndale High School site with captions. You can also find more photos on the district website at the following link: [Bond 2019 - Ferndale School District \(ferndalesd.org\)](http://ferndalesd.org)
 4. The construction trailers are moving from the east of the weight room to the parking area between Old Main and the current CTE Building. This is in preparation for the project to advance to the next phase which will begin with the tearing down the old gym in June and opening the Athletic Wing this fall.

If you have questions or comments about any of the content of this update, please feel free to reach out to me or one of my colleagues.

Mark



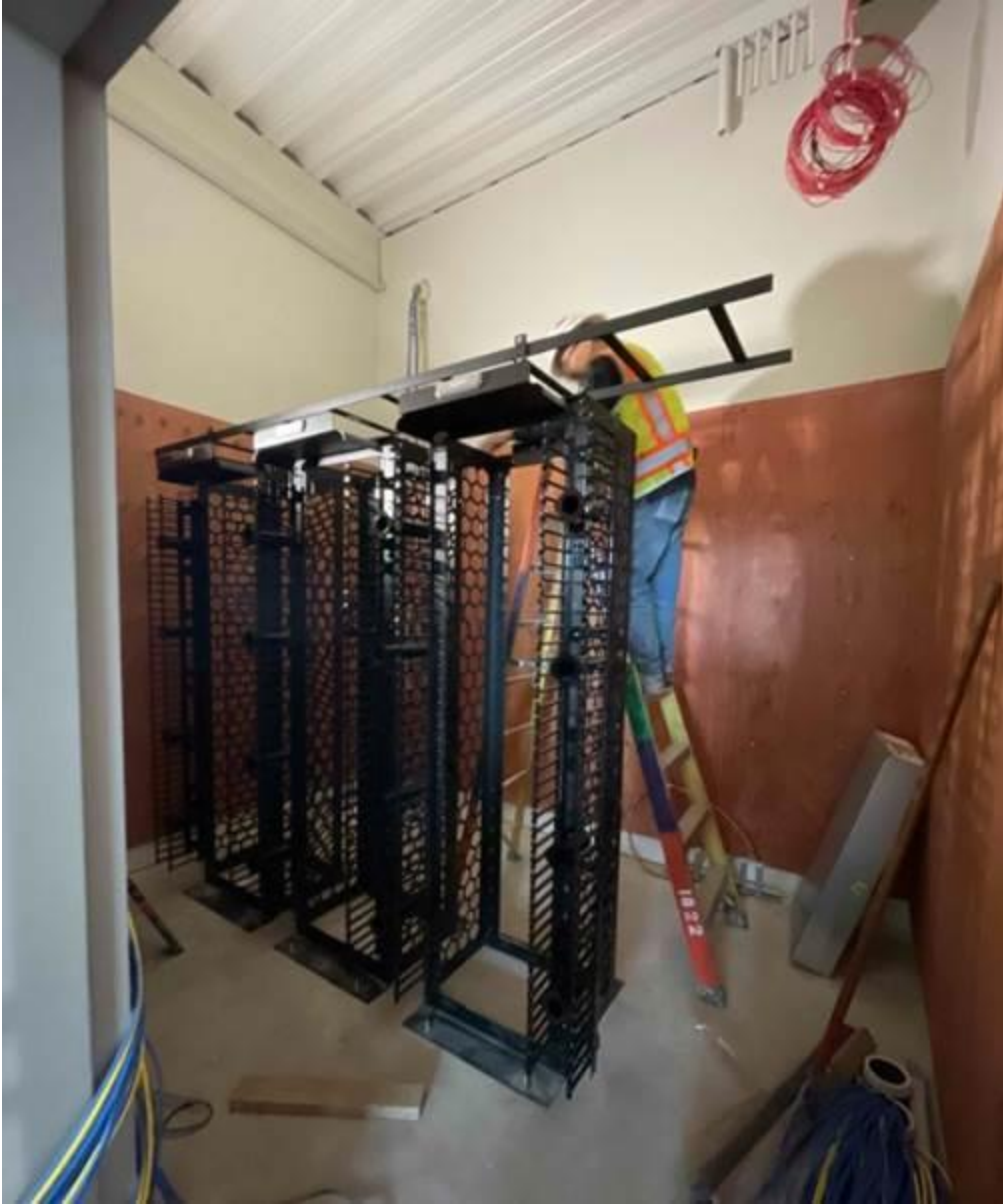
Crews installing formwork for the hardscapes around the Grandstands



Sheetrock installation in the Main Gym



Framing work in the Auxiliary Gym



Crews installing the data equipment rack in the Academic Wing



Crews installing the ceiling grid in the Academic Wing



Construction trailers being relocated to new parking area between Old Main and CTE Wing