



# ENROLLMENT REPORT

*September*  
*2015*

*Presented September 23rd, 2015*

SOUTH WHIDBEY SCHOOL DISTRICT NO. 206

<b>Grade</b>	<b>High</b>	<b>Middle</b>	<b>Elementary</b>	<b>SWA</b>	<b>Total</b>
<b>K</b>			74.00	5.00	79.00
<b>1</b>			70.52	5.00	75.52
<b>2</b>			70.02	6.73	76.75
<b>3</b>			96.02	4.75	100.77
<b>4</b>			95.02	4.18	99.20
<b>5</b>			102.52	3.93	106.45
<b>6</b>		103.43	-	2.94	106.37
<b>7</b>		90.33		8.00	98.33
<b>8</b>	1.00	106.14		7.00	114.14
<b>9</b>	124.39			3.25	127.64
<b>10</b>	108.90			11.25	120.15
<b>11</b>	97.41			10.51	107.92
<b>12</b>	124.02			8.28	132.30
<b>Total</b>	<b>455.72</b>	<b>299.90</b>	<b>508.10</b>	<b>80.82</b>	<b>1,344.54</b>

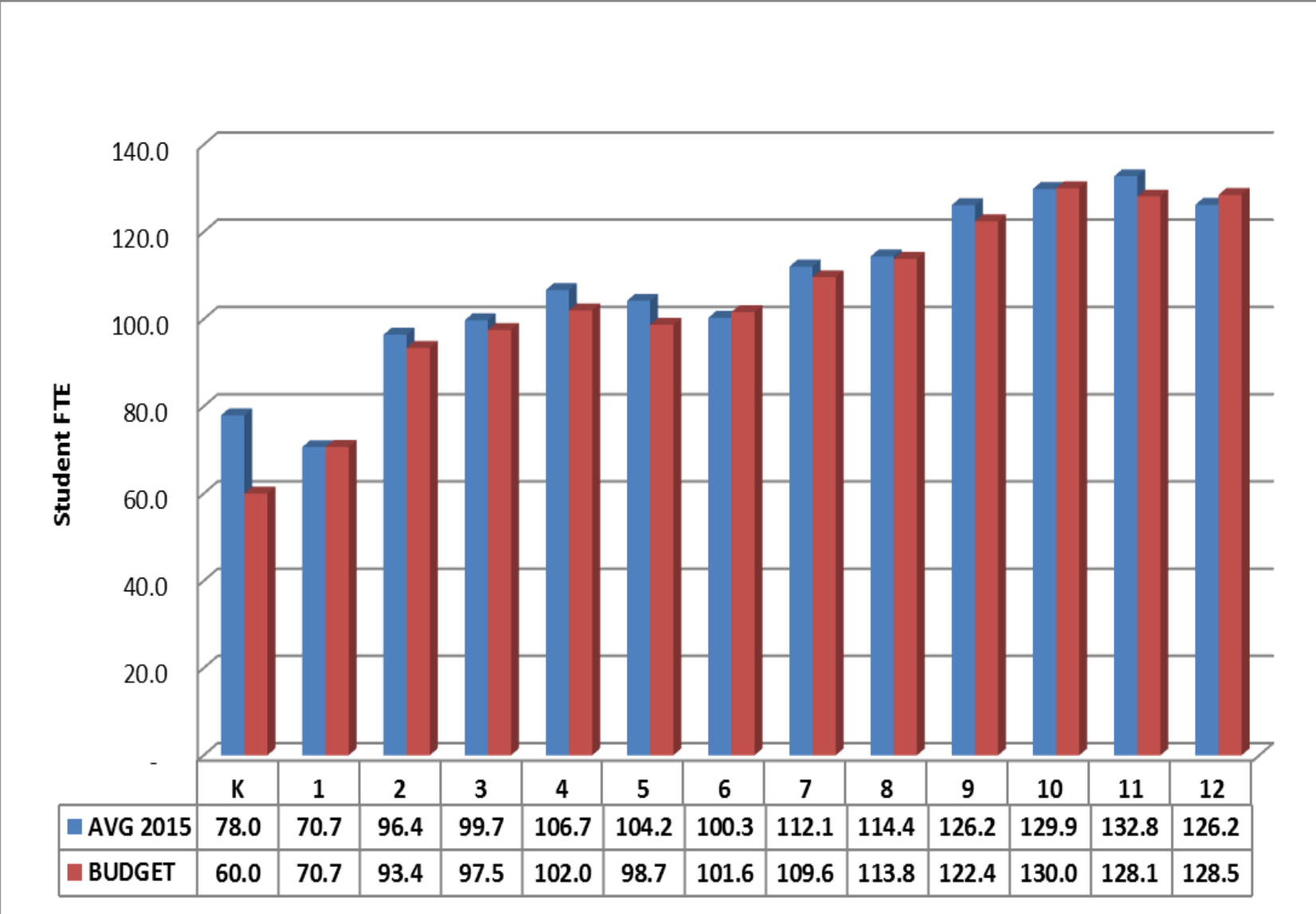
## **Student Enrollment (FTE) – September 2015**

South Whidbey School District Enrollment - By Building						CHG
	SWES	LMS	SWHS	SWA	Total	
Sep-06	686.38	430.20	624.62	163.90	1,905.10	
Sep-07	647.22	397.00	608.97	154.25	1,807.44	(97.66)
Sep-08	619.90	405.44	597.95	142.46	1,765.75	(41.69)
Sep-09	532.50	406.00	551.53	104.76	1,594.79	(170.96)
Sep-10	530.31	396.40	521.89	89.69	1,538.29	(56.50)
Sep-11	508.42	384.70	501.21	73.78	1,468.11	(70.18)
Sep-12	507.12	323.80	510.74	65.27	1,406.93	(61.18)
Sep-13	488.90	307.27	505.57	64.81	1,366.55	(40.38)
Sep-14	484.58	299.22	478.84	79.83	1,342.47	(24.08)
<b>Sep-15</b>	<b>508.10</b>	<b>299.90</b>	<b>455.72</b>	<b>80.82</b>	<b>1,344.54</b>	<b>(35.43)</b>
Budget	498.30	291.30	449.20	106.70	1,345.50	
+/- ( Budget)	9.80	8.60	6.52	(25.88)	(0.96)	

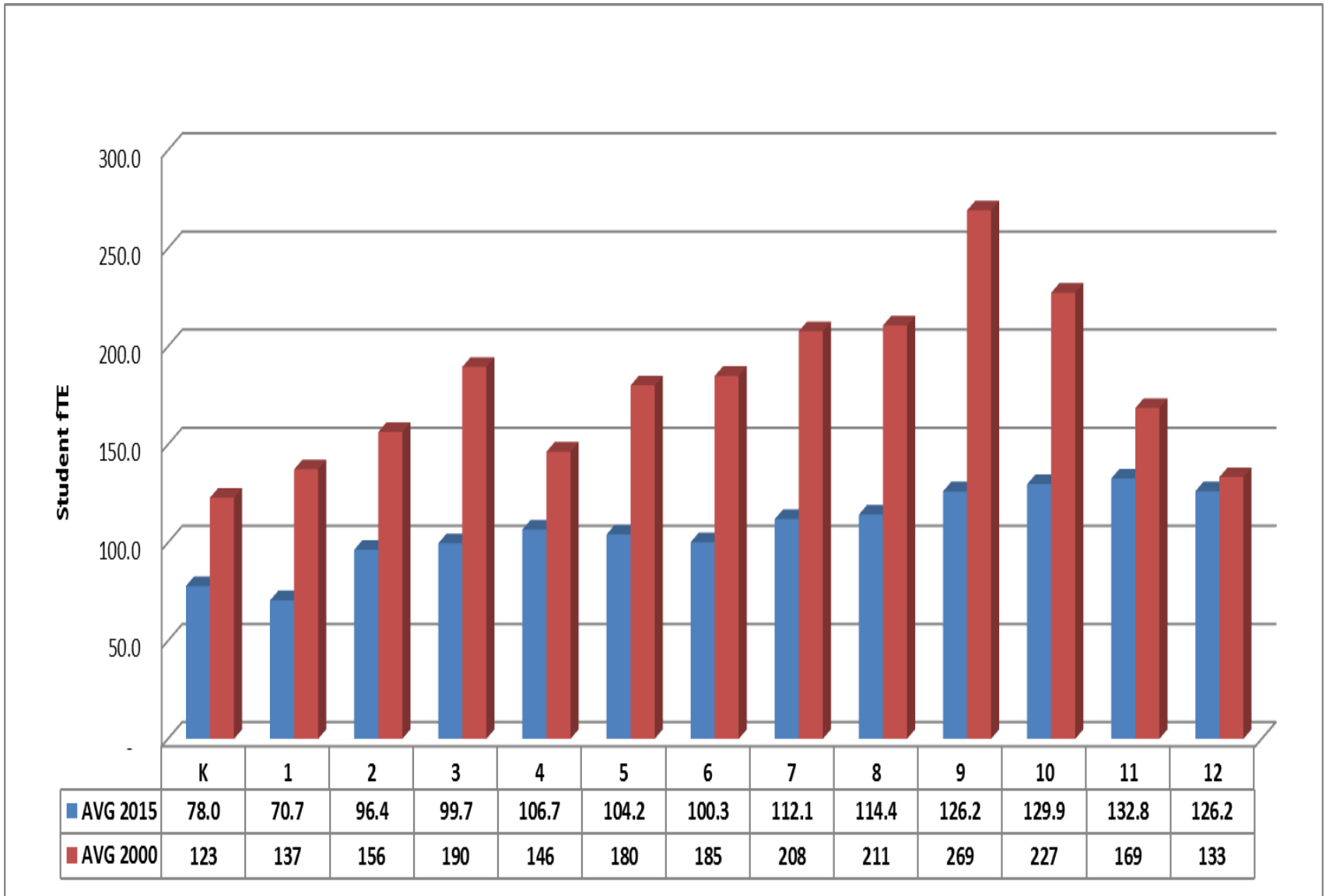
## Student Enrollment (FTE) - By Month & Building

Change From Previous Year Avg	District-Wide											
	Year	Sep	Oct	Nov	Dec	Jan	Feb	Mar	Apr	May	June	Average
(39.02)	06/07 Actual	1,905.1	1,911.0	1,907.0	1,907.9	1,895.7	1,898.1	1,881.0	1,870.2	1,870.3		1,894.0
(86.33)	07/08 Actual	1,807.4	1,815.9	1,820.7	1,820.0	1,804.9	1,811.6	1,800.3	1,796.5	1,791.9		1,807.7
(51.08)	08/09 Actual	1,765.6	1,776.1	1,772.4	1,768.4	1,761.0	1,744.9	1,742.5	1,740.3	1,738.5		1,756.6
(161.08)	09/10 Actual	1,594.8	1,604.7	1,599.3	1,599.0	1,596.9	1,597.8	1,586.5	1,581.9	1,598.9		1,595.5
(47.71)	10/11 Actual	1,538.3	1,559.5	1,556.0	1,556.2	1,553.8	1,552.6	1,544.6	1,540.5	1,529.1		1,547.8
(86.94)	11/12 Actual	1,468.4	1,469.0	1,460.5	1,462.5	1,460.3	1,458.9	1,462.0	1,460.7	1,455.5	1,450.8	1,460.9
(39.64)	12/13 Actual	1,406.9	1,414.0	1,419.0	1,426.9	1,428.6	1,425.0	1,420.0	1,423.5	1,423.2	1,425.3	1,421.2
(38.29)	13/14 Actual	1,367.4	1,399.5	1,393.8	1,383.8	1,390.0	1,386.9	1,383.2	1,377.4	1,376.3	1,371.2	1,382.9
(22.68)	14/15 Actual	1,348.3	1,353.1	1,360.4	1,360.3	1,363.8	1,370.9	1,371.5	1,363.0	1,357.3	1,354.1	1,360.3
(38.40)	15/16 Actual	1,344.5	0.0	0.0	0.0	0.0	0.0	0.0	0.0	0.0	0.0	1,344.5

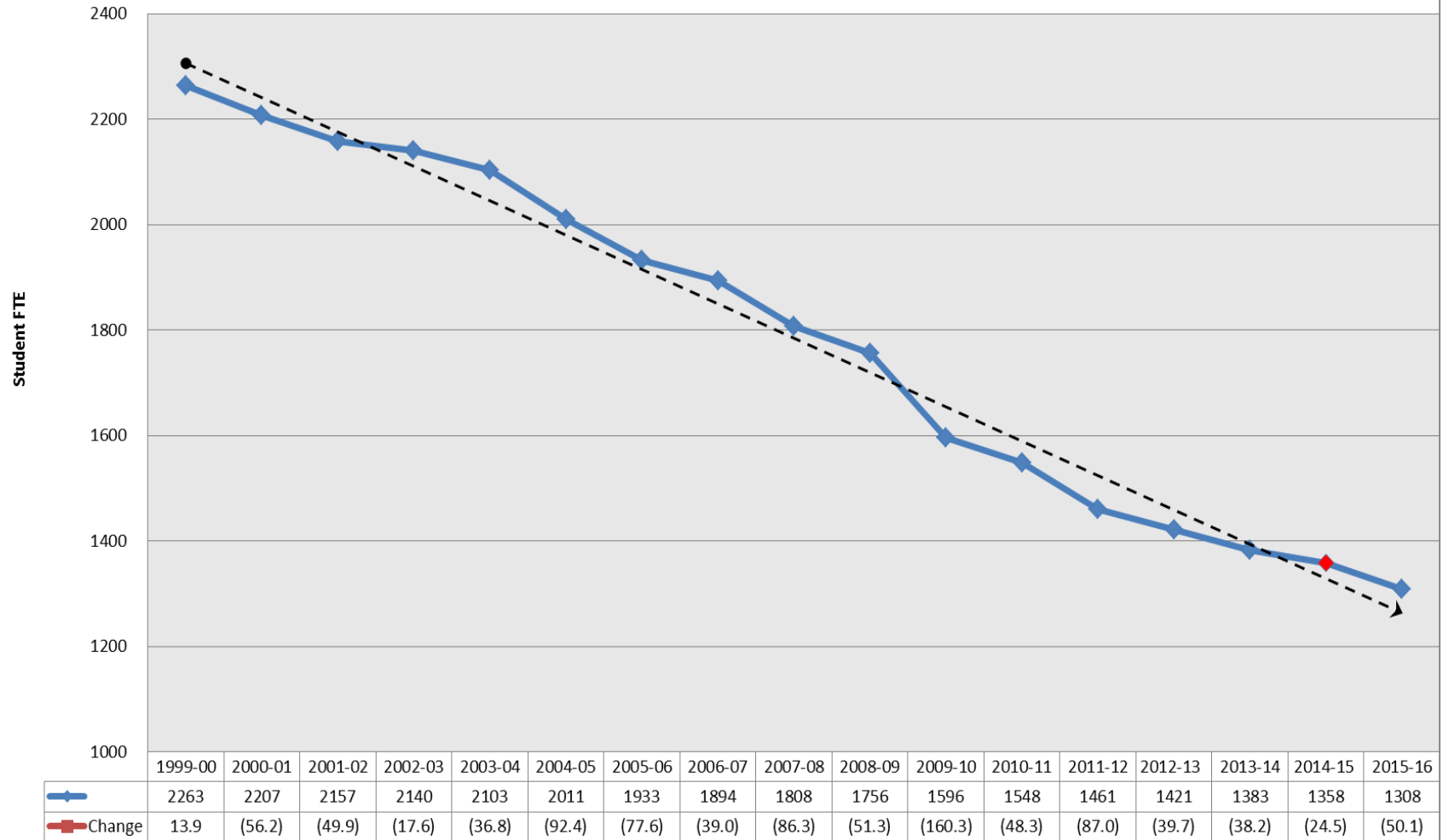
## Student Enrollment – By Month



**Student Enrollment - Budget vs. Actual by Grade**

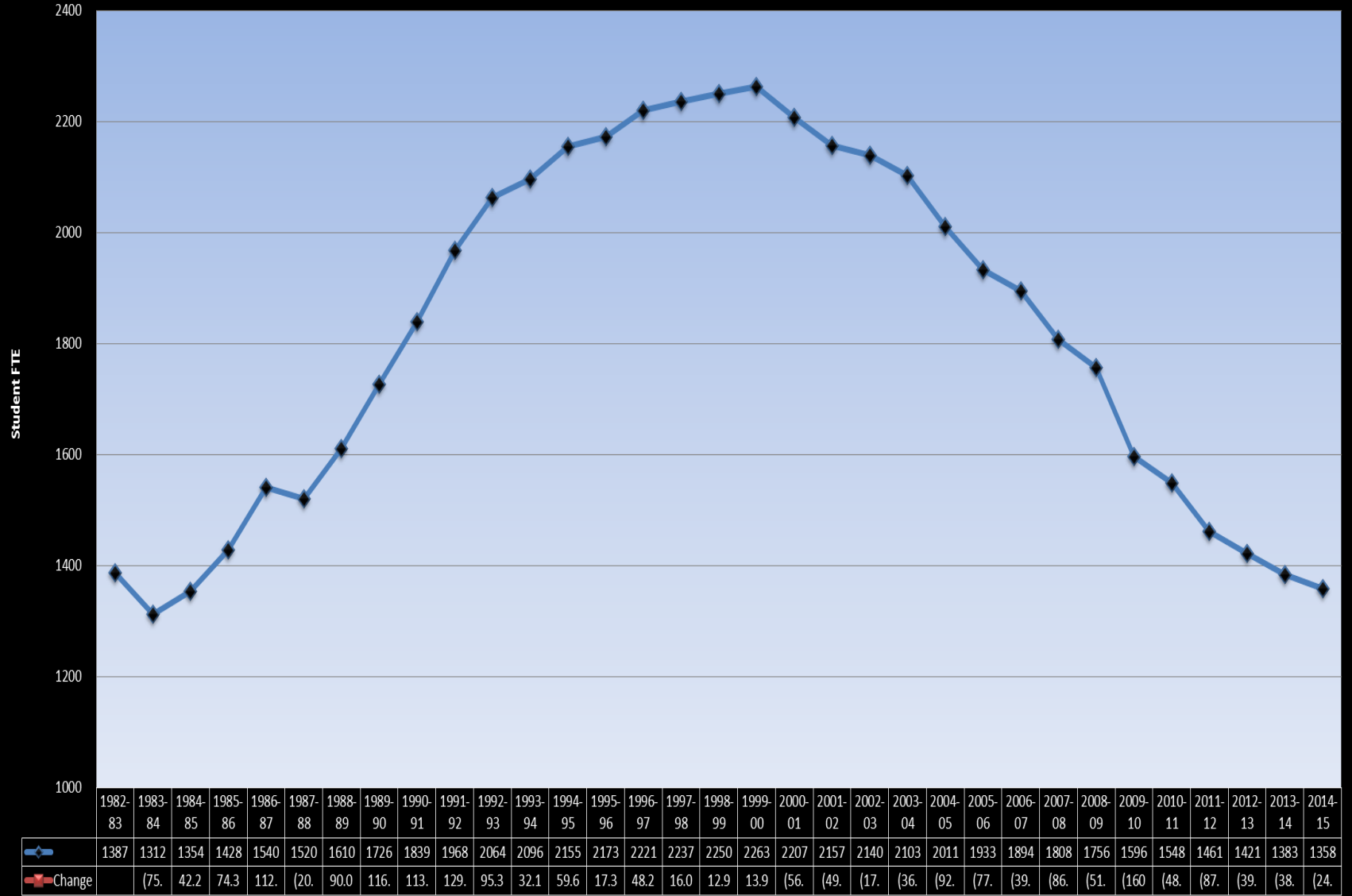


**Student Enrollment - Historical by Grade**



## Student Enrollment - Historical by Year

## Student Enrollment History



## Student Enrollment - Historical by Year