

# PLEASE KEEP ILL STUDENTS OUT OF SCHOOL

The list below gives school instructions not medical advice.  
Please contact your health care provider with health concerns.



## SYMPTOMS OF ILLNESS



## THE STUDENT MAY RETURN AFTER...

(The list below indicates the shortest time to stay home.  
A student may need to stay home longer for some illnesses.)

**Fever:** temperature of 100.4°F or greater



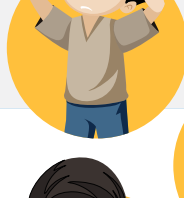
**Fever-free for 24 hours** without taking fever-reducing medicine AND after a COVID-19 **test is negative** OR **5 days** if not tested.

New **cough** illness OR new **difficulty breathing**



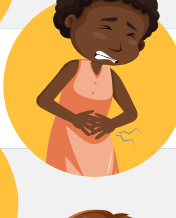
**Symptoms improving for 24 hours** AND per guidance for primary COVID-19 symptoms. If diagnosed with pertussis (whooping cough), the student must take 5 days of prescribed antibiotics before returning.

**Headache** with stiff neck or with fever



**Symptom-free** OR with orders from doctor to school nurse. Follow fever instructions if fever is present.

**Diarrhea:** 3 loose or watery stools in a day or unable to control bowel movements



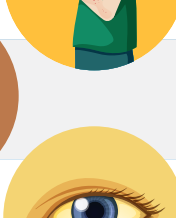
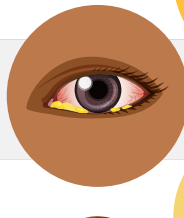
**Symptom-free for 48 hours** OR with orders from doctor to school nurse.

**Vomiting:** one or more episodes that are unexplained



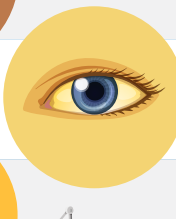
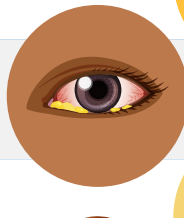
**Symptom-free for 48 hours** OR with orders from doctor to school nurse.

**Skin rash** or **open sores**



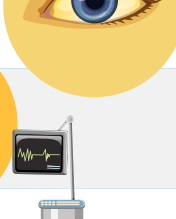
**Symptom free**, which means rash is gone or sores are dry or can be completely covered by a bandage OR with orders from doctor to school nurse.

**Red eyes with eye discharge:** yellow or brown drainage from the eyes



**Symptom-free**, which means redness and discharge are gone OR with orders from doctor to school nurse.

**Jaundice:** new yellow color in eyes or skin



After the school has orders from doctor to school nurse.

**Acting differently without a reason:** unusually sleepy, grumpy or confused



**Symptom-free**, which means return to normal behavior OR with orders from doctor to school nurse.

**Major health event**, like an illness lasting 2 or more weeks OR a hospital stay

After the school has orders from doctor to school nurse.

**Student's health condition requires more care than school staff can safely provide**

After measures are in place for student's safety.