

THE 24:1 INITIATIVE

2017 IMPACT REPORT





THE 24:1 INITIATIVE is a place-based community development effort led by residents and created to solve the serious challenges facing individuals and families living in the Normandy Schools Collaborative area. The name “24:1” was chosen by the community and represents the 24 municipalities in the Normandy school district with one vision for strong communities, engaged families, and successful children.



BEYOND HOUSING exists to create strong communities that support healthy families and children. As a comprehensive and nationally recognized community development organization, Beyond Housing brings civic leaders, targeted non-profits, corporate partners, and residents together to help entire communities become better places to live.

While specific challenges and priorities vary by community, successful and thriving communities need help and support at all levels. Beyond Housing provides support and resources in the areas of education, housing, health, employment readiness and access, economic development, and personal finance. We focus on collective impact, capacity building, and community engagement.

As Beyond Housing works in communities, the voice of the people continuously drives the actions of staff, partners and key stakeholders. Beyond Housing’s “Ask, Align, Act” approach is based upon listening to the community, acting as stewards of the community’s vision, and brings together partners to support that vision—all in an effort to create meaningful change and greater results. From health and nutrition programs to leading edge personal finance initiatives, Beyond Housing meets communities exactly where they’re invited to help and according to the needs the community has identified.



THE 24:1 COMMUNITY LAND TRUST (CLT), owned and directed by the community, builds and renovates homes within the boundaries of the Normandy Schools Collaborative. It then supports families in becoming homeowners through the Affordable Quality Homes Program, and offers support, resources, and services to help homeowners thrive.

Additionally, the CLT makes significant investments in new economic development projects such as the Pagedale Town Center, the 24:1 Cinema and the 24:1 Construction Company.



THE COLLECTIVE IMPACT NETWORK, known as the Network, is bringing partners and resources together to empower individuals and families who are living and working in the 24:1 Community.

Together, the partners make up a network of non-profit organizations connecting individuals and families to information, resources and services across multiple impact areas—housing, employment, education, health, and personal finance. Individuals and families are personally guided by trusted front-line staff members from the network of participating partner organizations.

By connecting partners and resources with individuals and families, the Network is empowering individuals and families in the 24:1 Community to live a better life—today and tomorrow.



It is hard to believe that the 24:1 Initiative began 7 short years ago. The initiative was officially launched in May 2011 after a year-long comprehensive community engagement process with residents and key stakeholders of the community. During that time, residents shared their hopes and dreams, along with what they wanted for their community. In the end, the community rallied around one vision for a strong community, engaged families, and successful children. Ever since then, we've been working hard with the voice of the community constantly driving our actions.

Looking back, there has been so much change and so many accomplishments. Yet, we all understand that there is still a lot of work to be done.

For someone like myself who wants to get things done quickly, I have to remind myself, our staff, and all of our partners, that this is a marathon—not a sprint.

From what I understand, there are similarities between running a marathon and community development. Marathon runner Tim Noakes says,

“Your body will argue that there is no justifiable reason to continue. Your only recourse is to call upon your spirit, which fortunately functions independently from logic”, and “There is no greater feeling than accomplishing something that you thought was impossible.”

Within these pages, you will learn about all of the wonderful things that are happening in the 24:1 Community—remarkable things made possible by the residents, municipal leaders, non-profit partners, the school district, local businesses, the clergy, and many others. It is because of the collective spirit and drive of these individuals and organizations that we have been able to accomplish so much together. Things that did not seem possible are now a reality.

Over the past seven years, we've built the first grocery store, two senior centers, a cinema, and a town center. Children are arriving at kindergarten ready to learn. The infant mortality and child obesity rates are down. We witnessed numerous policing consolidations, a municipal merger, and have raised and invested over \$100 million dollars into the 24:1 Community. And this is just a few of the things that we have accomplished over the last seven years.

Together we have become accustomed to doing the impossible. This is a testament to our collective spirit and vision for helping the 24:1 Community become a better place to live. Thank you for running this marathon with us and we look forward to one day crossing the finish line together.

Onward,

A handwritten signature in black ink, appearing to read 'C. Krehmeyer'.

Chris Krehmeyer
President and CEO
Beyond Housing



THE 24:1 CLT ACQUIRES AND DEVELOPS LAND FOR THE BENEFIT OF THE 24:1 COMMUNITY. IT SUPPORTS THE FINANCING AND DEVELOPMENT OF AFFORDABLE QUALITY HOUSING AND ECONOMIC DEVELOPMENT.



The 24:1 CLT has 60 plus employees who manage a real estate portfolio on behalf of the community that includes the 24:1 Cinema, Pagedale Town Center, Quality Affordable Homes, and the 24:1 Construction Company with services in construction, demolition, landscaping, maintenance, repair and rehab, acquisition, development, and property management.

27

Affordable Quality Homes

57

Demoed homes

3

Demoed commercial buildings

208

Weekly lawn & landscape parcels

31

Homes repaired

190

Property acquisitions



HOLIDAY FRIENDS

Every year, Beyond Housing hosts a holiday gift-giving program to ensure families have a little something extra under the tree. In the process, holiday joy is spread to low-income families that struggle to afford basic living needs. The community is invited to participate in the program by adopting families and purchasing gifts from the family's wish list, or by making a monetary contribution.

PARTNERS

Toys for Tots

581

Number of children

230

Number of families

134

Number of people who adopted families

\$14,618.09

Contributions raised

\$38,093.23

Total value of gifts



OWNER-OCCUPIED HOME REPAIR PROGRAM

Homeowners living on a fixed income or going through a rough financial time often struggle to pay for preventative home maintenance and repairs. To help residents maintain their homes, Beyond Housing received multiple grants to complete home repairs on owner-occupied homes in Northwoods, Pagedale, Wellston, Vinita Park, Bel-Ridge, Cool Valley, and Pine Lawn. These repairs focus on correcting health and safety issues, along with weatherizing homes to improve energy efficiency.

PARTNERS

Federal Home Loan Bank of Des Moines

St. Louis County Office of Community Development

24:1 Community Land Trust

Commerce Bank

Midwest Bank Centre

Enterprise Bank

155

Number of homeowners helped in 2017

\$2.7 million

Invested in repair grants

SINGLE FAMILY RENTAL HOMES AND SENIOR LIVING

Beyond Housing's single-family homes include services that enrich lives, helping seniors and families reach their goals and dreams by offering support in the areas of education, health, employment and personal finance.

240

Number of service-enriched rental houses

95

Number of senior living rental units

EDUCATION



PAGEDALE FAMILY SUPPORT CENTER - FREEDOM SCHOOL

For more than 65 students at Beyond Housing's Pagedale Family Support Center, last summer was filled not only with the typical play time, but also summer enrichment programs through the Children's Defense Fund Freedom School program. Here, students engaged in a variety of activities designed to encourage a love for reading and increase self-esteem. They also participated in the National Day of Social Action project, which taught students the voting process and helped make sure all eligible voters in the area were registered.

PARTNERS

Children's Defense Fund
St. Louis County Library
STL BWorks
Prosperity Connection
Collective Impact Network
U&I Rise

65

*Number of children
in program*

24,480

Total minutes spent reading

60

*Number of children
participating in National Day
of Social Action*





5byAge5

5byAge5 is an initiative of more than 30 agencies that serve children under age 5, collaboratively working together to create quality early childhood experiences critical to a child's lifelong success and the vitality of the community. 5byAge5 focuses on the five essential resources families need to help their child be school-ready by age five: developmental screenings and referrals, quality early learning, healthcare, parenting skills, and community support.



From 2013 to 2016, the original 5byAge5 partners saw a 50% increase in the number of children served from 1,299 children to 1,945.

PARTNERS

Asthma & Allergy Foundation, St. Louis Chapter • Belle Children's Services of St. Louis Arc •
Bethany Christian Services • Delta Gamma Center for Children with Visual Impairments
Epworth Children & Family Services • FamilyForward • First Steps/AWS USA
Generate Health • Helping Hand Me Downs • LUME Institute/Child Care Aware of Eastern Missouri
Lutheran Family and Children's Services • Miriam Learning Center • Missouri History Museum
Nine Network • Normandy Schools Collaborative • Nurses for Newborns • Our Little Haven
Our Daycare • Parents as Teachers • Project LAUNCH • Ready Readers • Special School District
St. Louis County Department of Public Health • St. Louis County Library
St. Louis Regional Early Childhood Council • UMSL College of Education • United 4 Children
Washington University Program in Occupational Therapy • Youth in Need • YWCA Head Start/Early Head Start

The total number of children ages 0 to 5 served in 2016 was approximately 4,010.



BIG BROTHERS BIG SISTERS



Big Brothers Big Sisters works to ensure youth in the 24:1 Community are able to own their future, living a joyful life and earning a living wage by age 26. The organization has been changing children’s lives by matching them with caring adults to guide them on a path to success. Because today’s youth face a variety of challenges, being matched with a big brother or big sister can help them navigate these challenges and reach their potential. Big Brothers Big Sisters helps build trusting and enduring relationships with young people, parents, volunteer mentors, and schools.

183

Youth served in the 24:1 Community

VIKING ADVANTAGE

Beyond Housing’s Viking Advantage program helps students save for college with Individual Development Accounts, where each dollar deposited is matched with three dollars. Students can deposit up to \$500 that is matched with \$1,500, reaching a grand total of \$2,000 to use for post-secondary education. Students in Viking Advantage also receive intensive ACT prep through the Princeton Review, assistance with college financial aid applications and entrance exam fees, as well as financial education through ECON Lowdown. To date, Viking Advantage has helped 283 students with more than \$750,000 spent on college education.

PARTNERS

- Normandy Schools Collaborative**
- Missouri College Advising Corp.**
- U.S. Bank**
- Federal Reserve Bank of St. Louis**
- The Princeton Review**
- The Scholarship Foundation of St. Louis**
- St. Louis Graduates**
- The University of Missouri-St. Louis**

\$14,417

Total saved by students for college expenses

\$43,251

Total funds including matching dollars

98%

% of participants who enrolled in college (2% enrolled in military service)

PAGEDALE FAMILY SUPPORT CENTER - AFTERSCHOOL PROGRAM

Helping students with homework has become a serious focus in Beyond Housing's Afterschool program. Serving kids 5 to 17, the program matches students with future teachers from the University of Missouri-St. Louis College of Education to provide tutoring support, especially in literacy and STEAM (Science, Technology, Engineering, Arts, and Math). Students receive a hot meal, are taught important life skills, and engage in a variety of enrichment activities.

PARTNERS

University of Missouri-St. Louis
Girl Scouts of Eastern Missouri
Wyman Center
OASIS Catch Healthy Habits
World Aquarium
Collective Impact Network

53

*Number of children
in the program*

40,793

*Total minutes spent reading
in the program*

85%

*Of parents reported an
increase in their child's
academic abilities*



PAGEDALE FAMILY SUPPORT CENTER - REDBIRD ROOKIES

Every child in the City of Pagedale can dream of playing for the World Champion Cardinals thanks to Beyond Housing's Redbird Rookies program. More than 160 children received free uniforms, cleats, gloves, bats, balls, and other equipment, along with support off the field with health, education, mentoring, and cultural arts. They also attended a Cardinals game last summer and enjoyed the 4th Annual Redbird Rookie Spring Training Camp.

PARTNERS

Cardinals Care
St. Louis County Parks Department
City of Pagedale
Ed's Trophy
Collective Impact Network

160

Number of youth participants



FAMILY ENGAGEMENT LIAISONS



Beyond Housing’s Family Engagement Liaisons (FELs) work in the Normandy Schools Collaborative (NSC), connecting students and families to resources, services, and information. The FELs engage parents and children through one-on-one interactions, school and community events, phone calls, and home visits.

THE FELS ARE RESPONSIBLE FOR :

Increasing parent engagement at the schools

Providing basic needs to children including supplemental food, uniforms, coats, and school supplies.

Providing resource referrals to parents and children

Assisting NSC staff in monitoring and increasing student attendance

2,583

Number of families engaged by FELs

520

Number of parents volunteering in schools

159

Number of parent engagement events

4,536

Parent contacts at events

1,360

Number of resource referrals

27,847

Number of basic need items provided to parents/children

MONEY SMART WEEK

Working with United Way, other non-profit agencies, and local banks, Beyond Housing participates in the annual Money Smart Week. This project is working to provide financial education and asset building opportunities throughout the region. To help residents learn more about managing money, building credit, and preparing to find a job, Beyond Housing hosted a resume workshop, credit workshops, and a job fair at our new headquarters in Pine Lawn.

131

*Attended the Job Fair,
Resume & Credit Workshop*

27

*Attended Money Smart
Week Youth Event*

140

*Attended Healthy Grocery
Store Budgeting Event*

EDUCATION NEWS

A TRIP TO WASHINGTON DC

As a reward for winning an essay contest focused on African American greatness, 10 high school students from the 24:1 Community were taken on an all-expense paid trip in September of 2017, to Washington D.C. These 10 scholars—along with 6 chaperones consisting of both Beyond Housing and North County Police Cooperative Staff—had the privilege of visiting the newly opened African American History Museum, taking a tour of the Capital, and viewing the historic Howard University campus. Not only was this trip a way to celebrate the greatness of the 24:1 Community’s children, it was a chance to help bridge the gap between police and the families they serve.

NORMANDY SCHOOLS COLLABORATIVE – PROVISIONAL ACCREDITATION

On December 1, 2017, the Missouri Board of Education voted unanimously to upgrade the Normandy Schools Collaborative (NSC) accreditation to “provisional,” citing improvements not just in academics, but system leadership and school culture. In praising the move, NSC superintendent Charles Pearson recognized not just the work of district administrators, teachers, parents, and students, but the ongoing support of community organizations like Beyond Housing and others who “made it possible for us to continue to provide the services and support to our students and families through what seemed impossible circumstances.” In announcing the decision, Beyond Housing CEO Chris Krehmeyer thanked the Family Engagement Liaison staff, who had worked tirelessly with Normandy families to make sure that they had the needed resources to support their child’s learning.

NORMANDY SCHOOLS COLLABORATIVE BOND ISSUE

On April 3, 2017, voters in the Normandy Schools Collaborative passed a \$23 million-dollar bond issue to support upgrades to Normandy schools. In October, the school board voted to reconfigure education in the district by joining the early childhood and kindergarten schools and by moving 7th and 8th grade students back to the district’s elementary schools. Beyond Housing helped Normandy in publicizing the bond issue and connecting local residents to feedback opportunities after the bond issue passed.

PROMISE ACCOUNTS

Believing every child should have the opportunity to attend college, Beyond Housing gives a \$500 MOST 529 college savings account—a Promise Account—to every student entering kindergarten in the Normandy Schools Collaborative.

PARTNERS

Normandy Schools Collaborative
Ascensus
Missouri State Treasurer
Collective Impact Network

263

Number of kindergarteners enrolled in the program

\$131,500

Total dollars deposited in 2017 in 529 accounts

\$883,000

Total dollars deposited in 529 accounts to date

1,707

Total number of students enrolled to date



WYMAN TEEN OUTREACH PROGRAM (TOP)



TOP promotes healthy behaviors, life skills, and a sense of purpose in the Normandy Schools Collaborative 7th and 8th graders, and empowers teens with tools and opportunities. TOP helps teens build their educational success, life and leadership skills, healthy behaviors, and relationships. As a result, teens are better able to navigate challenges during their teenage years—a time when decisions matter.

80.5%

% of Students completing TOP



UNITED 4 CHILDREN / PROGRAMS ACHIEVING QUALITY (PAQ)

United 4 Children's (U4C) PAQ program provides professional development, training, and resources for the early childhood centers and providers in the 24:1 Community. U4C's participating PAQ centers receive professional development and coaching, business planning, accounting supports, facility grants, onsite consultation, and training toward reaching their desired goals. U4C also helps families identify quality, inclusive childcare programs within the 24:1 Community, along with other resources available as part of the 5byAge5 collaborative working group.



1626

Hours of professional coaching

254

Hours of training provided

510

Number of children served

39

*Number of teachers receiving
CDA credentials*

To bridge the gap in early childhood education and prepare kids to be successful in kindergarten, Beyond Housing and United 4 Children partnered to create the 24:1 Early Childhood Learning Center. Offered free to children ages 2½ to 5 living in 24:1 Community, the center provides classes part-time, four days per week taught by teachers with Child Development Associate (CDA) credentials.

48

Number of children screened

85%

*Significant Improvements
made*

88%

*Parent participation
& engagement*



PASSPORT TO HEALTH (P2H)

A healthy community is the goal of Beyond Housing’s P2H program, which connects 24:1 residents with free health and wellness classes providing health and nutrition education, as well as physical activity. Free fitness classes offered 6 days per week helped the 4,623 participants increase their activity levels and lead healthier lives.

PARTNERS

- Express Scripts Foundation
- Great Rivers Greenway
- Missouri Foundation for Health
- St. Louis County Libraries
- St. Louis County Parks
- Operation Food Search
- Collective Impact Network

4,623

Number of health class participants

78%

% of participants reporting increased physical activity

96%

% of participants reporting positive diet changes



FOOD PANTRY

One of the key elements of a healthy community is access to food, and Beyond Housing’s Food Pantry exists to help make sure no one in the 24:1 Community goes hungry. The pantry is open the second Thursday of every month, while also offering bread and pastries every week thanks to ongoing donations from the Panera Bread Dough-Nation Program.

PARTNERS

- St. Louis Area Foodbank
- University of Missouri-St. Louis
- Panera Bread
- Operation Food Search
- Collective Impact Network

153

Avg. number of families served monthly

25

Number of seniors receiving weekly food boxes



NURSES FOR NEWBORNS

Nurses for Newborns provides in-home nursing visits promoting healthcare, education, and parenting skills in the 24:1 Community. In-home nursing visits include infant assessments and developmental screenings, while also connecting mothers and babies to other health care resources and parenting support. The goal is to help mothers and babies be as healthy as possible during this crucial prenatal/infant stage of child development.



172

Number of mothers served in the 24:1 Community

303

In-home Nursing Visits

192

Community Health Educator visits

60

Developmental Screenings Completed

HEALTHY COMMUNITIES

Since 2013, Beyond Housing and the Normandy Schools Collaborative have teamed up to participate in the Healthy Schools Healthy Communities Initiative through the Missouri Foundation for Health. The program focuses on giving kids access to healthy food and safe places to play, while also creating a culture of healthy living. The initiative has a goal of reducing childhood obesity rates by five percent over the next five years.

PARTNERS

Missouri Foundation for Health
Normandy Schools Collaborative
PedNet
Trailnet
Operation Food Search
St. Louis Area Foodbank
Oasis
St. Louis County Department of Public Health
St. Louis County Parks

900

Number of residents engaged in healthy eating programs and activities

800

Number of residents engaged in physical activity programs and activities

774

Number of residents receiving health information only



AFFINIA HEALTHCARE PARTNERSHIP

The 24:1 Community welcomed Affinia Healthcare to the area in 2017, with a primary care center in the Pagedale Town Center and a satellite center at Normandy High School. Affinia is one of Missouri's most significant community health organizations with centers throughout the area. The Pagedale center provides primary care services and laboratory services, while offering flexible hours, walk-in appointments, and accepting a variety of insurance plans such as Medicaid, Medicare, Gateway to Better Health, and most commercial insurance plans.

PARTNERS

Affinia Healthcare
Beyond Housing
24:1 Community Land Trust
Collective Impact Network

1075

Number of patients seen at the Pagedale Center in the first six months of operation

2,600

Expected annual number of patients served



ST. LOUIS TAX ASSISTANCE PROGRAM

For more than 15 years, the St. Louis Tax Preparation Assistance Program (TAP) has helped working families prepare taxes at no cost. Trained volunteers work with families to prepare accurate tax returns and file on time, helping families to receive their tax refunds faster.

289

Number of families receiving tax assistance

\$15,176

Avg. gross income

\$1,242

Avg. refund

Over 10,000

Number of volunteer hours



REDDOUGH

RedDough is a true alternative to high-cost, small-dollar loans and exists to help families gain access to cash when an emergency happens or to get by when money is tight. Since 2016, Prosperity Connection partnered with the 24:1 Community Land Trust (CLT) to bring RedDough services to residents in the 24:1 Community, as well as to partner with other service providers who assist families to help build their financial capability.



725

Loans issued

\$414,853

Dollars loaned

\$572

Avg. loan amount



PROSPERITY CONNECTION



Prosperity Connection provides access to free financial coaching services and affordable financial products and services within the 24:1 Community. Through individualized coaching and group classes, Prosperity Connection's staff connects with clients to assist them as they work to establish or build credit, create and maintain a budget, save toward a goal, and/or purchase an asset.

9

Homes acquired

36-points

Avg. credit score increase

\$20,911

Total debt reduced

\$5,316

Increase in total savings

COMMUNITY ENGAGEMENT



24:1 CLERGY COALITION

The 24:1 Initiative brought together more than 200 clergy leaders in conjunction with the Normandy Schools Collaborative, area mayors, police, and others to support community building efforts. Led by Mount Beulah Missouri Baptist Church Co-Pastor Reverend Dr. E.G. Shields Jr., the 24:1 Clergy Coalition is harnessing the power of the religious community to help residents grow and thrive.



24:1 MUNICIPAL GOVERNMENT PARTNERSHIP (MGP)

The 24:1 Municipal Government Partnership (MGP) is a partnership of mayors, board members, and key staff people within local government working together on cost savings and service improvement projects. Beyond Housing works closely with the MGP, helping to facilitate their collective efforts in order to provide good governance for the benefit of those living and working in the 24:1 Community.

6

Number of municipalities now served by the Normandy Police Department

7

Number of municipalities now served by the North County Cooperative Police Department



2 court hubs

13 Municipal courts within 24:1 have transitioned into 2 main court hubs, minimizing costs while increasing services and efficiencies.

The first municipal consolidation

in St. Louis County was unanimously approved by voters in the City of Vinita Park and Vinita Terrace. The two cities celebrated the completion of the merger in May 2017. The process has now started for the merging of the Village of Glen Echo Park within the City of Normandy.

\$500,000

The Missouri Department of Conservation awarded Beyond Housing a \$500,000 grant—a first-time collaborative grant—for Tree Resource Improvement and Maintenance (TRIM) across several municipalities.

\$215,000

Savings realized from collaborative forestry/tree bids

2018 INITIATIVES



PINE LAWN MANOR

New homes are coming to Pine Lawn in 2018! Beyond Housing will build 41 new three-bedroom homes on land owned by the 24:1 Community Land Trust (CLT), some with finished lower levels and one-car garages. The homes will be built near the Pine Lawn Homes development with easy access to a community playground and other amenities and shops. This development is all part of the “garden city” concept that will feature a mix of homes in a park-like atmosphere. The master plan is to create a neighborhood where residents can easily access schools, transportation, stores, and other services.

PARTNERS

Missouri Housing Development Commission
St. Louis Equity Fund
Art & Architecture
E.M. Harris Construction Company
TPI Group
City of Pine Lawn
24:1 Community Land Trust
Beyond Housing

\$10.4 million investment

MSD PROJECT CLEAR RAINDSCAPE PROGRAM

Beyond Housing and the 24:1 Community Land Trust (CLT) will complete Project Clear work in Pine Lawn. The project's goal is to improve water quality and substantially reduce storm water runoff, which can cause flooding, basement backups, and overflows.

By removing asphalt pavement and building more practical and beautiful retention areas, Project Clear will reduce surface runoff, filter pollutants, and reduce storm water runoff before it goes into the sewer system. The transformation of Pasadena Boulevard will be completed in the summer of 2018.

PARTNERS

Metropolitan St. Louis Sewer District

City of Pine Lawn

City of Northwoods

24:1 Community Land Trust

Beyond Housing

\$5.6 million investment

24:1 ARTS COLLABORATIVE

Not only is there significant untapped artistic talent in the 24:1 Community that we want to showcase and highlight, but there is also a desire to bring the great resources of the larger St. Louis artistic community (e.g. Jazz St. Louis, Dance St. Louis, the Pulitzer) to North County. We are developing an arts collaborative within the 24:1 Community to develop local talent, bring in regional and national arts, and explore planning for a possible physical arts space.

GATEWAY TO PINE LAWN

With the support of NeighborWorks America and the U.S. Economic Development Administration, Beyond Housing received a \$50,000 grant to create a feasibility study and implementation plan to guide the redevelopment at the intersection of Jennings Station Road and Natural Bridge Road. Through surveys and community meetings, Beyond Housing is working with the City of Pine Lawn to understand what new services and amenities residents want for their neighborhood. This process is the first step toward a major revitalization of the neighborhood's most active commercial area.



NEW PARK IN THE CITY OF PINE LAWN

The 24:1 Community Land Trust is working on the development of a new park in the City of Pine Lawn with plans for a multipurpose level playing field, fenced in playground equipment, swing sets for toddlers and kids 2-13, two areas to accommodate large tent pavilions, trees, lighting in the center of the park, 6 picnic tables, and 2 barbeque pits. The park development will be completed in 2018.



GRACE HILL WOMEN'S BUSINESS CENTER



Grace Hill is bringing their Women's Business Center to the 24:1 Community in 2018. Started in 1999 as a public/private partnership with the U.S. Small Business Administration, the program supports female entrepreneurs by providing business development training programs, business opportunity workshops, a legal clinic and one-on-one business counseling.

COMMUNITY HEALTH WORKER

In 2018, Beyond Housing will launch its 24:1 Community Health Workers Project. Building on our history of promoting health and emerging partnerships with health organizations—particularly Affinia Healthcare—the project will place two community health workers in the area. These health workers will communicate with health organizations to identify residents and children who lack access to primary and preventive health care services, then work with them to ensure access. The program will focus on health conditions that disproportionately impact local residents—asthma in the case of children and diabetes and diabetes related conditions for adults. To further the program's impact, Beyond Housing will work with Affinia Healthcare, the St. Louis Asthma and Allergy Foundation, Christian Hospital, and the Normandy Schools Collaborative.

MUNICIPAL GOVERNMENT PARTNERSHIP

The Municipal Government Partnership approved a strategic work plan focused on four specific areas: 1) Street and Sidewalk Repairs, 2) an Opt-In Trash Services Contract, 3) a Strategic Code Enforcement Management Plan to address vacant, abandoned, and deteriorated properties, and 4) the TRIM Grant for tree maintenance and removals.

24:1 COFFEE HOUSE/CAFÉ OPENING FEBRUARY 2018

The 24:1 Community Land Trust will be opening the 24:1 Coffee House/Café in February 2018 located in the Wealth Accumulation Center at 6724 Page Avenue. The café will serve specialty coffees along with breakfast and lunch from 6:00 am to 3:00 pm, Monday through Saturday. The café will be a great place for residents of the 24:1 Community to come together and talk about all of the wonderful things that are happening in the community. We looking forward to seeing you there.

COMMUNITY ENGAGEMENT

In 2018, Beyond Housing will spearhead a 24:1-wide community engagement process to update the 24:1 Community Plan that was previously developed in 2011. Throughout the year, Beyond Housing will be meeting with residents and other leaders in the community to gain your input on how we should move forward in the areas of health, education, job readiness, economic development, and housing. Your voice is critical to the development of our work, and we want to hear your thoughts, needs, and vision for the 24:1 Community.



Helping Hand Me Downs is coming to the 24:1 Community in 2018 to provide necessities such as children's clothing, supplies, and baby gear to help families in need. As trusting relationships are developed, Helping Hand Me Downs further empowers families by connecting them with resources related to housing and employment. The organization collects donations from the community and distributes them to families in need referred through a network of over 100 agencies, hospitals, and shelters.

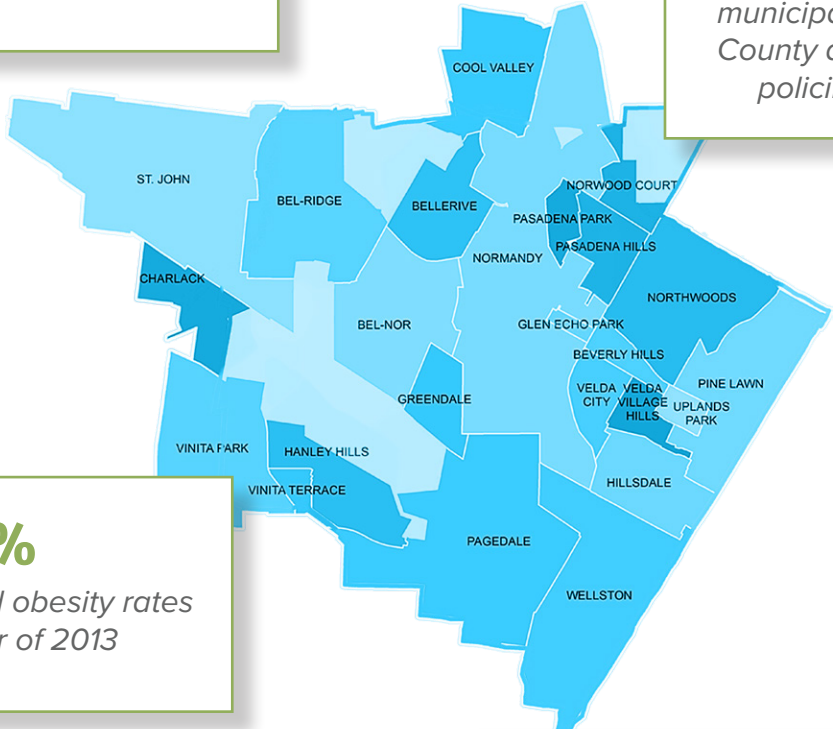




2017 HIGHLIGHTS

30%
*reduced infant mortality
between 2013 and 2017*

1st
*municipal merger in St. Louis
County along with numerous
policing consolidations*



18%
*reduction in child obesity rates
since winter of 2013*

\$100 million
*raised and invested in the
24:1 Community since 2010*

6506 Wright Way
St. Louis, MO 63121
314-533-0600

beyondhousing.org