



New Britain Parks, Recreation & Community Services Department

# SUMMER & FALL BROCHURE 2022

JUNE • NOVEMBER 2022 [www.nbparksnrec.org](http://www.nbparksnrec.org)



Supported by Mayor Erin E. Stewart and Parks & Recreation Commission Chairman Patrick Dorsey



National Gold Medal Finalist, Regional Winner Dorothy Mullen Arts & Humanities Award, State of Connecticut Governor's Committee on Fitness Recognition Award, Green Circle Award from the Connecticut Department of Environmental Protection, A.W. Stanley Park Nature Trail, designated a White House Millennium Trail, Governor's Committee on Physical Fitness Community Award, 2009 USTA New England Parks & Recreation Association of the Year Award.



## TABLE OF CONTENTS

### ADULT ACTIVITIES

Community Gardens.....	24
Community Services Division Information.....	23-24
Piano & Voice Lessons.....	16
Senior Center.....	21-22
Stanley Golf Course.....	19
Tennis Lessons.....	17
Veteran Events.....	16
Yoga.....	17

### FORMS

Activity Registration Form.....	8
Camp TotalRec Registration Form.....	12-15
Pool Pass Registration Form.....	7

### PARK INFORMATION

Fairview Cemetery Information.....	16
Rental Information (Facility, Field, Terrific Toys).....	2
Parks Guide.....	20
Pools & Splash Pads.....	6
Oscod Park Improvements.....	Back

### SPECIAL EVENTS

Abilities Walk & Roll.....	23
Farmers Market.....	25
Flick & Float.....	3
Great American Boom.....	3
Little Monster's Bash.....	3
Main Street U.S.A.....	4
New Britain Bees Baseball.....	4
Pool Parties.....	3
Rose Garden Festival.....	4
Summer Music Festival.....	26

### YOUTH ACTIVITIES

After School Programs.....	18
Basketball.....	18
Camps (summer).....	9-11
Piano & Voice Lessons.....	16
Soccer.....	18
Swim Lessons.....	5
Tennis Lessons.....	17

## Behavior Expectations Policy

Participants are expected to exhibit appropriate behavior at all times. Participants shall behave in a safe and responsible manner, show courtesy and respect to other participants and staff. If a participant does not adhere to these appropriate behaviors the department reserves the right to take appropriate action based on evaluation of the situation up to and including suspension or expulsion. In cases of participant suspension or expulsion program fees are not refundable.

## Non-Discrimination Policy

The Parks, Recreation and Community Services Department is committed to a culture of inclusion, in which we provide recreational programs and services that are accessible and equitable to the community. We strive to share a diverse array of ideas, opportunities, and experiences for all participants. The Department follows the City's policy on discrimination and harassment, which protects from discrimination and bullying on the basis of age, color, disability, familial status, height, marital status, national origin, political affiliation, race, religion, sex/gender (including gender identity and expression), sexual orientation, veteran or active duty military status or weight."

A lot of time and effort goes into recreation programming, sometimes due to circumstances beyond our control, changes in price, content or location may occur.

### REGISTRATION PROCEDURE:

Registrations are accepted on a first-come, first-served basis. Registration forms are accepted 8:15am-3:45pm, Monday-Friday at City Hall in room 302, 27 West Main Street. Payment must accompany registration. Mail-in registration is also accepted on this basis; online registration is available for most programs.

### PROGRAM INFORMATION:

NC = No class held this date.

For information on programs or scholarships call (860) 826-3360.

### FEES:

Fees are listed per session, per person unless otherwise noted.

### CANCELLATION POLICY:

All programs are subject to last minute cancellation and/or changes if minimum registration is not met or unforeseen circumstances occur. The Director of the Parks, Recreation & Community Services Department has discretionary authority to refund program and facility fees (up to but not exceeding \$250, unless authorized by the Parks and Recreation Commission).

### REFUND POLICY:

Refunds for recreational programs will be considered up to one week prior to start of the program. If granted, all refunds must be processed through the New Britain Finance Department, via city-issued check. Refunds processed through the Finance Department require a social security number and take a minimum of two weeks to process. Refunds of payment made by credit or debit take 1-3 business days to process and do not require a social security number to be provided; funds will be returned directly to the card used for original payment. The Parks, Recreation & Community Services Department suggests the use of credit or debit cards when registering for programs.

### ADA COMPLIANCE:

New Britain Parks, Recreation & Community Services Department does not discriminate on the basis of race, color, national origin, gender, religion, age, or disability in provision of programs and services. Individuals with disabilities are encouraged to register for activities. The New Britain Parks, Recreation & Community Services Department is complying with the Americans with Disabilities Act (ADA), public law 101-336. The law addresses issues of accessibility of facilities and programs. Provisions of reasonable program modifications will be made on a case by case basis to allow people with disabilities to both participate in and benefit from programs. Documentation of disabilities is required when requesting reasonable modifications.

### PARKS & RECREATION STAFF

Director of Parks, Recreation & Community Services.....	Erik Barbieri
Superintendent of Golf Course Operations.....	Kevin DeVaux
Assistant Superintendent of Golf Course Operations.....	Michael Lorch
Administrative Services Officer.....	Stephanie Formato-Scalise
After School Program Coordinator.....	Maggie Winiarski
Assistant After School Program Coordinator.....	Megan Dowling
Assistant After School Program Coordinator.....	Ashley Wooten
Assistant After School Program Coordinator.....	Lindsey Smida
Recreation Services Coordinator.....	Eric Dowling
Recreation Services Coordinator.....	Matt Scofield
Administrative Clerk.....	Laura Rosado
Veterans Affairs Clerk.....	Sandy Keefe

### COMMUNITY SERVICES STAFF

Community Services Administrator.....	Mallory Deprey
Youth Advocate.....	Omar McDew
Disabilities Services Advocate.....	June O'Leary
Homeless Prevention and Housing Coordinator.....	Mary Floyd
Prevention Coordinator.....	Tyshaunda Wiley
Administrative Assistant.....	Mona Starczewski

### SENIOR CENTER STAFF

Senior Center Program Specialist.....	Rexford Cone
Community Service Coordinator.....	Timothy Boroski
Senior Transportation Coordinator.....	Julie Swan
Custodian.....	Sean Hills
Bus Driver.....	Siobahn Baskerville
Bus Driver.....	Alex Molina
Bus Driver.....	Tiana Moore

### FAIRVIEW CEMETERY STAFF

Cemetery General Foreman.....	Jason Karwooski
Cemetery Administrator.....	Mike Pastore
Cemetery Maintainer.....	Juan Evangelista
Cemetery Maintainer.....	Paul Miller

### PARKS & RECREATION COMMISSION MEMBERS

Chairperson Patrick Dorsey,  
Commissioner David Anderson, Commissioner Scott Clark,  
Commissioner Annina Foran, Commissioner Aaron Hairston,  
Commissioner Nicholas Hudyma, Commissioner Steven Jeanetti,  
Commissioner Lisa Kaweck, Commissioner Vernon Pindar

### COMMON COUNCIL LIAISONS

Aldersperson Paul Catanzaro, Aldersperson Desiree Costa, Aldersperson Jerrell Hargraves  
Aldersperson Iris Sanchez, Aldersperson Peter Scirpo, Aldersperson Angel Segarra

All information in this brochure is accurate at time of printing but subject to change.

# Director's Message...

Greetings!

Summer is almost here and the Parks, Recreation and Community Services Department staff couldn't be more excited. There's something for everyone this summer, including, a variety of camps for youth, swim lessons, free yoga, many exciting special events and a whole lot more. The Farmers Market returns on Wednesday, June 1st at Central Park and will run every Wednesday from 11am - 2pm until October. Everyone's favorite summer music concert series will commence at Walnut Hill Park on Wednesday, July 6th and run every Monday and Wednesday from 7pm - 9pm in July and August. Saturday, June 18th will be a busy day for New Britain with A.W. Stanley and Willow Brook Pools opening for the season and our Rose Garden Festival returning to Walnut Hill Park for its eighth season. Don't forget both splash pads open up for the season Memorial Day weekend and are open daily from 10am -8pm through Labor Day weekend. All of our campers are anxiously waiting for the first day of camp which will be on Tuesday, June 21st. For all of our golfers out there, we invite you to hit a bucket of balls or play a round of golf at our beautiful Stanley Golf Course. While at Stanley, check out the beautiful patio at the Back Nine Tavern which is the perfect spot to unwind after a long day. I encourage all New Britain Seniors to check out the Senior Center if you haven't already. The Senior Center offers a multitude of offerings, including a brand new fitness center, computer lab, greenhouse club, pickle ball league and more. Speaking about pickle ball...have you checked out the new courts at Walnut Hill Park? Speaking of parks, leading the way this year are three construction projects that are going to be sensational and change the face of three different parks. First is the brand new Osgood Park. As you can see from the back page of this brochure, the park is getting a complete facelift! Included in the project are a brand new artificial turf multi-use athletic field, two basketball courts, a handball court, new playground and splashpad, outdoor classroom facility, a two room indoor recreation building, and much more! In addition, after a long period of various permit approvals, we will be dredging the pond at Stanley Quarter Park! This project will bring new life to the pond area and will not only have a huge impact of the aesthetics around the pond area, but will allow for the return of such activities as paddleboat rides and ice skating in the winter (with help from Mother Nature). Obviously the health of the pond for all the fish and other water animals and wildlife will be improved greatly as well. Last but certainly not least, we have been working on the playground and picnic pavilion area at Willow Brook Park. The picnic pavilion will become the home to our summer Camp TotalRec and will also be available for rent by the community. A brand new playground will also be replacing the existing at Willow Brook Park and will be adjacent to the picnic pavilion. This brochure is packed with plenty of recreational summer and fall fun for everyone. Along with Mayor Erin E. Stewart, the entire Parks, Recreation and Community Services Department encourages you to "Experience the New" in New Britain this summer!



Erik Barbieri, CPRP  
New Britain Parks, Recreation and Community Services Director

## How to Register...

### Online with RecTrac:

- Obtain your household ID number. If you don't know your household ID number you must call the Parks & Recreation Office.
- Go to [www.nbparksnrec.org](http://www.nbparksnrec.org)
- Go to account log-in, first time users must have a household ID# to use WebTrac.

### In-Person or By Mail:

- Complete the necessary registration form(s):  
*Camp TotalRec: pages 12-15 (Including Medical and Health Form)*  
*Pool Passes: page 7*  
*Activity Registration: Page 8*
- Sign and double-check form to ensure information is correct, complete and contains a contact phone number. Incorrect or incomplete information will delay registration.
- Submit payment (cash, check, charge) for all fees. Make checks payable to: "New Britain Parks & Recreation Department".
- IF REGISTERING BY MAIL** send registration form(s) and payment to:  
Summer Registration 2022  
New Britain Parks & Recreation Department  
27 West Main Street, New Britain CT 06051.

PLEASE NOTE: REGISTRATION FORMS SUBMITTED WITHOUT PAYMENT OR CONTAINING INCORRECT/INCOMPLETE INFORMATION WILL NOT BE PROCESSED.

## Advertise your business at Veterans Memorial Stadium

Advertise your business in the sports capital of Connecticut - Veterans Stadium in Willow Brook Park. Veterans Stadium plays host to a variety of large sporting and special events including but not limited to: CIAC State Championships in Soccer, Football, Track & Field, Nutmeg Games, professional soccer matches, and many other exciting events. This opportunity gives you great exposure to a captive audience at an economical price.

For more information, please contact: Matt Scofield at (860) 826-3358 or [matt.scofield@newbritainct.gov](mailto:matt.scofield@newbritainct.gov)

## Rental Information...

### Facility & Field Rentals:

The parks of New Britain encompass approximately 900 acres of space. Contained within are countless amenities including stadiums, tennis courts, athletic fields of all sorts, a concert shell and a beautiful rose garden, many of these facilities and fields are available for private rental.

- |                      |                         |                              |
|----------------------|-------------------------|------------------------------|
| • Baseball leagues   | • Soccer leagues        | • Special events & festivals |
| • Basketball leagues | • Tennis tournaments    | • Wedding ceremonies         |
| • Cricket leagues    | • Track and field meets | • Concerts and more...       |

### A.W. Stanley Park Picnic Site Rentals:

From Memorial Day through Labor Day between the hours of 10:00am and 8:00pm you can rent a picnic area in A.W. Stanley Park (Excluding weekdays 06/20/2022-08/05/2022). Most areas have 2 tables and a grill. Available to residents and non-residents, 18 years of age or older.

**Resident Rate:** \$20.00 Per Table    **Non-Resident Rate:** \$30.00 Per Table    **Canned Beer Permit: \$50.00\***

\*Picnic site permittee must be 21 years of age or older.  
Picnic site reservation and beer permit must be in the same name.

### Picnic Pavilion Rental at Stanley Quarter Park:

From Memorial Day through Labor Day between the hours of 10:00am and 8:00pm you can rent the picnic pavilion at Stanley Quarter Park. This pavilion has three tables and oversized grill, the maximum party size is thirty people.

**Pavilion Rental Fee: \$100.00**

### Picnic Pavilion Rental at the Chesley Park Splash Pad:

From June 18, 2022 through August 13, 2022, you can rent the Picnic Pavilion at Chesley Park Splash Pad. Four hour rental blocks are available seven days a week from 11:00am-3:00pm and from 3:00pm-8:00pm (minimum of four hour rental). This pavilion has six tables with suggested maximum occupancy of 48 people. Prepared food only, no grilling allowed. Please note: Rental is of Pavilion only, Splash Pad will remain open to the public.

**Pavilion Rental Fee: \$100.00 (Per four hour block)**

**For more information on how to reserve a facility for your sports league or special event, please call (860) 826-3360.**

**Picnic Sites and Pavilion Rental Notes:** Reservations are accepted on a first come, first serve basis, sites cannot be held prior to registration. All renters are required to present valid identification at time of registration. **THERE WILL BE NO REFUNDS FOR CANCELLATIONS AFTER APRIL 15, 2022.** Sites are rented on a rain or shine basis, **REFUNDS WILL NOT BE ISSUED FOR INCLEMENT WEATHER.**



## Terrific Toys Toy Rental Program

Concessions • Basketball Challenge • Obstacle Course  
Gladiator Joust • Castle Bounce • and more...

Includes: Delivery, set-up, ride operators and breakdown of each attraction.  
For more info call Eric Dowling at (860) 826-3364

## Special Events

# The Great American Boom

Monday, July 4, 2022  
at Willow Brook Park  
Parking lot opens at 7:00 P.M.

This Event will feature:

- Food trucks
- DJ entertainment

\$10.00 per car. Pre-Registration Required!

A Parking pass is required for entry

Call the Parks & Recreation Office for more information.



Rain date Tuesday, July 5, 2022

## Pool Parties

Pool parties are held simultaneously at A.W. Stanley Park Pool and Willow Brook Park Pool; Friday evenings, June 24<sup>th</sup> through August 13<sup>th</sup> from 6:15 P.M. to 7:45 P.M.



Daily general admission rates apply.

## Flick & Float



Willow Brook Pool  
Friday, July 8, 2022



A.W. Stanley Park Pool  
Friday, August 5, 2022

Gates open at 8:00 P.M.  
Fee: \$3.00 per person

## Little Monster's Bash

Saturday, October 29, 2022  
from 10:00am-12:00pm  
at the New Britain Senior Center



- Magic Show
- Arts & Crafts
- Apple Cider & Donuts
- Trick or Treat Candy
- Canned Food Drive

FREE Admission!

Pre-Registration Required

Activity # 3931-1

(Register in the Parks & Recreation Office)

This event is geared for our littlest ghost and goblins ages 3-8

## Become A Sponsor!

### We Love Our Sponsors!

The Parks, Recreation and Community Services Department is indebted to its sponsors who make our yearlong special events possible. If you are looking to give back to your community, consider sponsoring a special event.

- ADA Walk & Roll
- Breakfast with Santa
- Easter Egg Hunt
- Farmers Market
- Fishing Derby
- Great American Boom
- Little Monster's Bash
- Main Street USA
- Rose Garden Festival
- Summer Concert Series
- Youth Basketball Programs

**Donations Welcomed:** The New Britain Parks, Recreation and Community Services Department receives numerous requests for financial assistance for its programs. Donating to our scholarship fund is a great way to give back to your community. Offerings in any denomination are always appreciated. If you wish to make a contribution please call the Parks & Recreation Office.

## Be more social...

...follow us on social media for program and event information!



New Britain Parks & Recreation



@NBParknRec



Mayor Erin E. Stewart Presents:  
**New Britain Rose Garden Festival**

Saturday, June 18, 2022

5:00 P.M. - 10:00 P.M. at the Walnut Hill Park Rose Garden

*Rain Date Saturday, June 25, 2022*



Come dine, drink & dance among the roses!

\$7 per person in advance

\$10 per person at the door

*This event is for adults only, ages 21 and over.*

For more information or to purchase tickets call the  
New Britain Parks, Recreation & Community  
Services Department at (860) 826-3360!



**Farmers  
Market**

June-October  
at Central Park

*See page 25 for more info.*

**Summer  
Concert Series**

July-August  
at Walnut Hill Park

*See page 26 for more info.*

**Abilities  
Walk & Roll**

Wednesday, July 20, 2022

5:00 P.M.-7:00 P.M.

at Walnut Hill Park

*See page 23 for more info.*

**MAIN STREET U.S.A.**

**NEW BRITAIN, CT**

**KIDS ZONE**  
**FOOD VENDORS**  
**LIVE ENTERTAINMENT**

**Touch-A-Truck**  
**VENDOR BOOTHS**  
**BEER & WINE GARDEN**

**DOWNTOWN STREET FESTIVAL** **SATURDAY, OCTOBER 8, 2022**

**SAVE THE DATE!**



**Summer 2022**

New Britain Stadium  
230 John Karbonic Way,  
New Britain, CT

(860) 826-BEES

www.nbbees.com

# American Red Cross **Swim Lessons** Open to residents & non-residents!

## Level 1 Introduction to Water Skills

Objective: To feel comfortable in the water and to enjoy the water safely.

Requirements: None.

Skills Covered: Entering and exiting the water safely, learning to submerge mouth, nose and eyes and breath control, front and back float and recovering to a stand, changing direction in the water, swimming 5 feet on front and back.

## Level 2 Fundamental Aquatic Skills

Objective: To give students success with fundamental skills

Requirements: Students entering this level must possess a Level 1 certificate or demonstrate all the Level 1 skills.

Skills Covered: Entering water by stepping or jumping in from the side, submerging entire head, blowing bubbles, open eyes underwater, front and back glide, swim 15 feet on front and 10 feet on back, swim on side, life jacket use.

## Level 3 Stroke Development

Objective: To build on skills in Level 2 through additional guided practice.

Requirements: Students entering this level must possess a Level 2 certificate or demonstrate all the Level 2 skills.

Skills Covered: Jump into deep water, head first entry from sitting or kneeling, submerging and retrieving an object, bobbing, survival float for 30 sec., treading water for 30 sec., front crawl 15 yards, butterfly 15 feet, back crawl 15 yards, elementary rescues, safe diving, check-call-care.

Higher level swim lessons may be offered upon request, pending staff availability.

### A.W. Stanley Park Pool

2161 Stanley Street, New Britain, CT

Fee: \$20.00 (Resident)/ \$30.00 Non-Resident)

**Session 1: June 20<sup>th</sup> - July 1<sup>st</sup>**  
Monday - Friday; 11:15 A.M.-11:45 A.M.

Class Name	Age	Activity #
Parent and Tot	6 mos-3	2101-1
Level 1	All	2111-1
Level 2	All	2113-1
Level 3	All	2116-1

**Session 2: July 5<sup>th</sup> - July 15<sup>th</sup>**  
Monday\* - Friday; 11:15 A.M.-11:45 A.M.

Class Name	Age	Activity #
Parent and Tot	6 mos-3	2101-2
Level 1	All	2111-2
Level 2	All	2113-2
Level 3	All	2116-2

**Session 3: July 18<sup>th</sup> - July 29<sup>th</sup>**  
Monday - Friday; 11:15 A.M.-11:45 A.M.

Class Name	Age	Activity #
Parent and Tot	6 mos-3	2101-3
Level 1	All	2111-3
Level 2	All	2113-3
Level 3	All	2116-3

\* Class will not be held on Monday, July 4, 2022.

### Willow Brook Park Pool

80 Mill Street, New Britain, CT

Fee: \$20.00 (Resident)/ \$30.00 Non-Resident)

**Session 1: June 20<sup>th</sup> - July 1<sup>st</sup>**  
Monday - Friday; 11:15 A.M.-11:45 A.M.

Class Name	Age	Activity #
Parent and Tot	6 mos-3	2501-1
Level 1	All	2519-1
Level 2	All	2505-1
Level 3	All	2512-1

**Session 2: July 5<sup>th</sup> - July 15<sup>th</sup>**  
Monday\* - Friday; 11:15 A.M.-11:45 A.M.

Class Name	Age	Activity #
Parent and Tot	6 mos-3	2501-2
Level 1	All	2519-2
Level 2	All	2505-2
Level 3	All	2512-2

**Session 3: July 18<sup>th</sup> - July 29<sup>th</sup>**  
Monday - Friday; 11:15 A.M.-11:45 A.M.

Class Name	Age	Activity #
Parent and Tot	6 mos-3	2501-3
Level 1	All	2519-3
Level 2	All	2505-3
Level 3	All	2112-3

\* Class will not be held on Monday, July 4, 2022.

# Pools & Splash Pads

## A.W. Stanley Park Pool

2161 Stanley Street, New Britain, CT

## Willow Brook Park Pool

80 Mill Street, New Britain, CT

## Chesley Park Splash Pad

23 Wildwood Street, New Britain, CT

## Willow Street Splash Pad

43 Willow Street, New Britain, CT

## Daily Pool Hours:

Public Recreation Swim.....1:00p.m. to 4:45p.m.

Must be at least 12 years old or accompanied by a 14 year old or older

Family & Adult Swim.....6:15p.m. to 7:45p.m.

Must be at least 14 years old or accompanied by an 18 year old or older.

## Daily General Admission Rates:

\$4.00 (ages 18 and older)

\$3.00 (ages 6-17)

FREE (ages 5 and under)

### Swimsuit Policy

Swimsuits must be worn to gain entry on to the pool deck. Only bathing suits can be worn in the pool, no additional clothing is allowed in the pool.

Pools will open for the season: Saturday, June 18<sup>th</sup> at 1:00p.m. They will close for the season Saturday, August 13<sup>th</sup> at 4:45p.m.

## Daily Splash Pad Hours:

Memorial Day through Labor Day Weekend

10:00a.m. to 8:00p.m.

Free Admission



## Pool Pass..... Why get a pool pass?

- **Unlimited access during pool hours**
- **Pays for itself in a few visits**

POOL PASSES ARE FOR NEW BRITAIN RESIDENTS ONLY

**Family Pool Pass..... \$50.00**

All persons listed on a family pass must reside at the same New Britain residence. Adult children over the age of 18 living at said address must obtain an individual pool pass.

**Individual Pool Pass..... \$30.00**

### SAVE YOUR POOL PASSES!

Only new pool pass registrants will receive actual passes. Those re-newing passes will receive a "22" sticker to be placed on the pass. Lost/Stolen passes will result in a \$5.00 per pass reprinting fee

See the Pool Pass Registration Form on Page 7 of this brochure.



# Individual or Family Pool Pass Registration Form Summer 2022

Directions: Complete this form IN FULL and return with payment to the Parks & Recreation Department, 27 West Main Street, Room 302, New Britain, CT 06051.

Additional Forms can be obtained by calling (860) 826-3360 or visiting [nbparksnrec.org](http://nbparksnrec.org)

## OFFICE USE ONLY

Init: \_\_\_\_\_ Date: \_\_\_\_\_  
CASH ☐ CK ☐ CC ☐  
CK# \_\_\_\_\_ \$ \_\_\_\_\_

### STEP 1: Primary Guardian / Individual Pool Pass Swimmer Information

First Name:	Last Name:
Address:	Email Address:
City, State, Zip:	<input type="checkbox"/> Please email my receipt to the above email address. <u>GO GREEN!</u>
Primary Phone:	Work Phone:
Cell Phone:	Birthday: / / Gender: M <input type="checkbox"/> F <input type="checkbox"/>

### STEP 2: Family Pool Pass Swimmer Information

Guardian One:	Birthday: / /	Gender: M <input type="checkbox"/> F <input type="checkbox"/>
Guardian Two:	Birthday: / /	Gender: M <input type="checkbox"/> F <input type="checkbox"/>
Child 1:	Birthday: / /	Gender: M <input type="checkbox"/> F <input type="checkbox"/>
Child 2:	Birthday: / /	Gender: M <input type="checkbox"/> F <input type="checkbox"/>
Child 3:	Birthday: / /	Gender: M <input type="checkbox"/> F <input type="checkbox"/>
Child 4:	Birthday: / /	Gender: M <input type="checkbox"/> F <input type="checkbox"/>



### STEP 3: Order Information

<b>INDIVIDUAL POOL PASS:</b> <input type="checkbox"/> <b>\$30.00</b> <i>If registering for a Family Pool Pass please leave this box blank</i>	Fee:
<b>FAMILY POOL PASS:</b> <input type="checkbox"/> <b>\$50.00</b> <i>If registering for an Individual Pool Pass please leave this box blank.</i>	Fee: <b>OR</b>
<b>PASS REPRINT:</b> 1 <input type="checkbox"/> 2 <input type="checkbox"/> 3 <input type="checkbox"/> 4 <input type="checkbox"/> 5 <input type="checkbox"/> 6 <input type="checkbox"/> 7 <input type="checkbox"/> 8 <input type="checkbox"/> <i>There is a \$5.00 per pass reprint fee</i>	Fee: \$

### SAVE YOUR POOL PASSES!

Only new pool pass registrants will receive actual passes. Those renewing pool passes will receive a "22" stickers to be placed on pass. Lost/stolen passes will result in a \$5.00 reprinting fee per pass.

### STEP 5: Payment Information

Pool Pass Fee Subtotal	\$	Payment Type: CASH <input type="checkbox"/> CHECK <input type="checkbox"/> CREDIT CARD <input type="checkbox"/>
Would you like to make a donation to our Scholarship Fund? <i>If yes please indicate the amount in the box to the right. (Activity # 7001-1)</i>	\$	Please make checks payable to "New Britain Parks and Recreation Department"
<b>Total Payment Amount</b>	\$	For up to the minute information  

I, the undersigned, being desirous of participating in the above designated event/program being sponsored by the Department of Parks and Recreation of the City of New Britain, do state and agree to the following terms and conditions of participation: 1. I agree and understand the nature and risks associated with this activity, including the risks of suffering personal injury and/or property damage during the course of the event/program. 2. I understand this event/program is a non-profit recreational event and agree to waive on my behalf, or the behalf of the participant, and claim I and/or the participant may have against the City, any agent or employee of the City, any sponsor of the event/program, or any volunteer assisting in the event/ program as a condition of my participation. 3. If the participant in the event/program is a minor (under the age of eighteen (18) years old), I represent that I am the parent or legal guardian to consent to such minor's participation in this event/program. 4. I give permission to the New Britain Parks & Recreation Dept. to photograph and video tape myself and my heirs. 5. This also gives permission for my child to be transported for special field trips without additional permission. Ample notification of trips will be given. 6. I understand that all information on this registration form is subject to verification and may affect eligibility for this program.

Signature: \_\_\_\_\_ Date: \_\_\_\_\_



## Activity Registration Form

OFFICE USE ONLY

Directions: Complete this form IN FULL and return with payment to the Parks & Recreation Department, 27 West Main Street, Room 302, New Britain, CT 06051. Additional Forms can be obtained by calling (860) 826-3360 or visiting [nbparksnrec.org](http://nbparksnrec.org)

Init: \_\_\_\_\_ Date: \_\_\_\_\_  
CASH ☐ CK ☐ CC ☐  
CK# \_\_\_\_\_ \$ \_\_\_\_\_

### STEP 1 Primary Guardian / Adult Participant Information (Please complete an Activity Registration Form for each adult participant)

First Name:	Last Name:
Address:	Email Address:
City, State, Zip:	<input type="checkbox"/> Please email my receipt to the above email Address. <u>GO GREEN!</u>
Home Phone:	Work Phone:
Cell Phone:	Birthday: / / Gender: <input type="checkbox"/> M <input type="checkbox"/> F
Adult Participant: If any special medical concerns please see the box in section 3.	

### STEP 2 Emergency Contact Information

Initial the box to the far right if this person has permission to pick up your child.

1 <sup>st</sup> Emergency Contact:	Home Phone:	Cell Phone:	Relationship:	
2 <sup>nd</sup> Emergency Contact:	Home Phone:	Cell Phone:	Relationship:	
3 <sup>rd</sup> Emergency Contact:	Home Phone:	Cell Phone:	Relationship:	

### STEP 3 Youth Participant Information (Please complete an Activity Registration Form for each youth participant under 18)

First Name:	Last Name:			
Address:	City, State, Zip:			
School:	Grade:	Birthday: / /	Does the participant have any special medical concerns?	Yes <input type="checkbox"/> No <input type="checkbox"/>
		Gender: M <input type="checkbox"/> F <input type="checkbox"/>	Does the participant require reasonable accommodations in order to participate?	Yes <input type="checkbox"/> No <input type="checkbox"/>
			Check here if you would like to have an individual accommodation meeting with the Parks and Recreation supervisor and the participant.	<input type="checkbox"/>

### STEP 4 Activity Information

1 <sup>st</sup> Activity Name:	Fee: \$	Activity Number:							
2 <sup>nd</sup> Activity Name:	Fee: \$	Activity Number:							
3 <sup>rd</sup> Activity Name:	Fee: \$	Activity Number:							

### STEP 5 Payment Information

Activity Fee Subtotal	\$	Payment Type: CASH <input type="checkbox"/> CHECK <input type="checkbox"/> CREDIT CARD <input type="checkbox"/>
Would you like to make a donation to our Scholarship Fund? If yes please indicate the amount in the box to the right.	\$	Please make checks payable to "New Britain Parks and Recreation Department"
Total Payment Amount	\$	For up to the minute information:



I, the undersigned, being desirous of participating in the above designated event/program being sponsored by the Department of Parks and Recreation of the City of New Britain, do state and agree to the following terms and conditions of participation: 1. I agree and understand the nature and risks associated with this activity, including the risks of suffering personal injury and/or property damage during the course of the event/program. 2. I understand this event/program is a non-profit recreational event and agree to waive on my behalf, or the behalf of the participant, and claim I and/or the participant may have against the City, any agent or employee of the City, any sponsor of the event/program, or any volunteer assisting in the event/program as a condition of my participation. 3. If the participant in the event/program is a minor (under the age of eighteen (18) years old), I represent that I am the parent or legal guardian to consent to such minor's participation in this event/program. 4. I give permission to the New Britain Parks & Recreation Dept. to photograph and video tape myself and my heirs. 5. This also gives permission for my child to be transported for special field trips without additional permission. Ample notification of trips will be given.

Signature: \_\_\_\_\_ Date: \_\_\_\_\_

# Camp TotalRec

Open to grades 1-5 at both locations.



## Camp Description:

Camp TotalRec is a seven-week camp for children who have completed grade 1-5. The summer is focused on outdoor, screen-free fun with enriching opportunities such as crafts, games, sports, special events, and theme days. The camp day is structured to include breakfast and lunch, swim lessons, group activities, and recreation swim. Campers build friendships, explore their creativity, and develop new skills while enjoying an unforgettable summer. Camp TotalRec is affordably priced and offers flexibility for families in today's busy world by offering one week sessions and before and after care programming.

## Camp Features:

- American Red Cross swim lessons
- Morning and afternoon busing offered from neighborhood stops
- Daily afternoon recreation swim
- Breakfast and lunch (offered through the USDA Summer Food Program)
- Fun weekly and daily themes

## Camp Locations:

Camp TotalRec is offered at two different locations for convenience to families: at AW Stanley Park, and at Willow Brook Park.

## Dates & Times:

The seven-week camp begins on Tuesday, June 21<sup>st</sup> and runs through Friday, August 5<sup>th</sup> (camp closed on Monday, July 4<sup>th</sup>). The camp day begins at 8:30am and ends at 3:15pm with staggered arrival and dismissal. Before and after care programming is offered for an additional fee with Camp Clubhouse. Free and fee-based field trips off site throughout the summer are available.

## Fees:

\$40.00 per camper, per week / \$250.00 per camper, for all 7 weeks.

## Registration Deadlines:

Online registration must be completed by Monday at 11:59pm before the week attending camp. All in-office and mail-in registration must be received, with payment, by 12:00pm on the Tuesday before the week attending camp. Registration deadlines allow sufficient time for processing and development of weekly registration rosters; this will be enforced to ensure the safety of all participants.

Please Note: Camp TotalRec programs are for New Britain residents only.

## A.W. Stanley Park Camp TotalRec

Location: 2251 Stanley Street, New Britain, CT

Class Name	Day	Start/End Date	Fee	Activity #
FULL SUMMER	M-F*	06/21-08/05	\$250	2940-8
Week 1	Tu-F	06/21-06/24	\$40	2940-1
Week 2	M-F	06/27-07/01	\$40	2940-2
Week 3	Tu-F**	07/05-07/08	\$40	2940-3
Week 4	M-F	07/11-07/15	\$40	2940-4
Week 5	M-F	07/18-07/22	\$40	2940-5
Week 6	M-F	07/25-07/29	\$40	2940-6
Week 7	M-F	08/01-08/05	\$40	2940-7

## Willow Brook Park Camp TotalRec

Location: 200 Mill Street, New Britain, CT

Class Name	Day	Start/End Date	Fee	Activity #
FULL SUMMER	M-F*	06/21-08/05	\$250	2943-8
Week 1	Tu-F	06/21-06/24	\$40	2943-1
Week 2	M-F	06/27-07/01	\$40	2943-2
Week 3	Tu-F**	07/05-07/08	\$40	2943-3
Week 4	M-F	07/11-07/15	\$40	2943-4
Week 5	M-F	07/18-07/22	\$40	2943-5
Week 6	M-F	07/25-07/29	\$40	2943-6
Week 7	M-F	08/01-08/05	\$40	2943-7



## Camp TotalRec Field Trips

Field Trips are combined for both camp locations.

### Day at the Movies

Picture Show Theaters, Berlin, CT

Wednesday, July 6, 2022

\$17 per camper, Activity #: 2830-1

### Trampoline Park

Fun City, New Britain, CT

Wednesday, July 13, 2022

\$24 per camper, Activity #: 2831-1

### Bowling/Arcade/Laser Tag

Spare Time, Bristol, CT

Wednesday, July 20, 2022

\$24 per camper, Activity #: 2832-1

Note:

\*Camp begins  
Tuesday, 06/21

\*\*No Camp  
Monday, 07/04



## A.W. Stanley Park Camp Clubhouse

Location: 2251 Stanley Street, New Britain, CT

### Before Camp Care: 7:30am - 8:30am

Class Name	Day	Start/End Date	Fee	Activity #
FULL SUMMER	M-F*	06/21-08/05	\$175	2920-8
Week 1	Tu-F	06/21-06/24	\$25	2920-1
Week 2	M-F	06/27-07/01	\$25	2920-2
Week 3	Tu-F**	07/05-07/08	\$25	2920-3
Week 4	M-F	07/11-07/15	\$25	2920-4
Week 5	M-F	07/18-07/22	\$25	2920-5
Week 6	M-F	07/25-07/29	\$25	2920-6
Week 7	M-F	08/01-08/05	\$25	2920-7

### After Camp Care: 3:15pm - 5:30pm

Class Name	Day	Start/End Date	Fee	Activity #
FULL SUMMER	M-F*	06/21-08/05	\$245	2921-8
Week 1	Tu-F	06/21-06/24	\$35	2921-1
Week 2	M-F	06/27-07/01	\$35	2921-2
Week 3	Tu-F**	07/05-07/08	\$35	2921-3
Week 4	M-F	07/11-07/15	\$35	2921-4
Week 5	M-F	07/18-07/22	\$35	2921-5
Week 6	M-F	07/25-07/29	\$35	2921-6
Week 7	M-F	08/01-08/05	\$35	2921-7

## Willow Brook Park Camp Clubhouse

Location: 200 Mill Street, New Britain, CT

### Before Camp Care: 7:30am - 8:30am

Class Name	Day	Start/End Date	Fee	Activity #
FULL SUMMER	M-F*	06/21-08/05	\$175	2924-8
Week 1	Tu-F	06/21-06/24	\$25	2924-1
Week 2	M-F	06/27-07/01	\$25	2924-2
Week 3	Tu-F**	07/05-07/08	\$25	2924-3
Week 4	M-F	07/11-07/15	\$25	2924-4
Week 5	M-F	07/18-07/22	\$25	2924-5
Week 6	M-F	07/25-07/29	\$25	2924-6
Week 7	M-F	08/01-08/05	\$25	2924-7

### After Camp Care: 3:15pm - 5:30pm

Class Name	Day	Start/End Date	Fee	Activity #
FULL SUMMER	M-F*	06/21-08/05	\$245	2925-8
Week 1	Tu-F	06/21-06/24	\$35	2925-1
Week 2	M-F	06/27-07/01	\$35	2925-2
Week 3	Tu-F**	07/05-07/08	\$35	2925-3
Week 4	M-F	07/11-07/15	\$35	2925-4
Week 5	M-F	07/18-07/22	\$35	2925-5
Week 6	M-F	07/25-07/29	\$35	2925-6
Week 7	M-F	08/01-08/05	\$35	2925-7

## Camp TotalRec Summer Bus Schedule

A.W. Camp TotalRec and L.I.T. Bus Route/Stops				
Bus Route # 1	Morning	Afternoon	A <b>PINK</b> magnet will identify this bus as a "Summer Camp bus.	
NBHS (main parking lot)	7:50 a.m.	4:10 p.m.		
Roosevelt School (parking lot)	8:00 a.m.	4:00 p.m.		
Chesley Park (Wildwood St. at bath house)	8:05 a.m.	3:55 p.m.		
Arrive to camp / Pick up from camp	8:20 a.m.	3:40 p.m.		
Bus Route # 2	Morning	Afternoon	A <b>YELLOW</b> magnet will identify this bus as a "Summer Camp bus.	
Northend School (Bassett Street)	8:40 a.m.	3:30 p.m.		
Smalley School (bus loop)	8:50 a.m.	3:20 p.m.		
Washington Park (park building on Carmody Street)	9:00 a.m.	3:10 p.m.		
Arrive to camp / Pick up from camp	9:10 a.m.	3:00 p.m.		
Bus Route # 3	Morning	Afternoon	A <b>BLUE</b> magnet will identify this bus as a "Summer Camp bus.	
Gaffney School (front parking lot)	7:50 a.m.	4:15 p.m.		
Jefferson School (parking lot)	7:55 a.m.	4:10 p.m.		
Stanley Quarter Park (boat house)	8:05 a.m.	4:00 p.m.		
Arrive to camp / Pick up from camp	8:10 a.m.	3:50 p.m.		
Bus Route # 4	Morning	Afternoon	An <b>ORANGE</b> magnet will identify this bus as a "Summer Camp bus.	
Walnut Hill Park (gazebo across from Park Place)	8:30 a.m.	3:30 p.m.		
Central Park (top of park by flag poles)	8:35 a.m.	3:25 p.m.		
Vance School (parking lot)	8:40 a.m.	3:20 p.m.		
Lincoln School (Steele St bus loop)	8:45 a.m.	3:15 p.m.		
Arrive to camp / Pick up from camp	9:00 a.m.	3:00 p.m.		

Willow Brook Camp TotalRec Bus Route/Stops				
Bus Route # 1	Morning	Afternoon	A <b>PINK</b> magnet will identify this bus as a "Summer Camp bus.	
Chesley Park (Wildwood St. at bath house)	7:50 a.m.	4:15 p.m.		
Roosevelt School (parking lot)	7:55 a.m.	4:10 p.m.		
Central Park (top of park by flag poles)	8:05 a.m.	4:00 p.m.		
Arrive to camp / Pick up from camp	8:15 a.m.	3:50 p.m.		
Bus Route # 2	Morning	Afternoon	A <b>YELLOW</b> magnet will identify this bus as a "Summer Camp bus.	
Gaffney School (front parking lot)	8:35 a.m.	3:30 p.m.		
Washington Park (park building on Carmody Street)	8:45 a.m.	3:20 p.m.		
Smalley School (bus loop)	8:55 a.m.	3:10 p.m.		
Arrive to camp / Pick up from camp	9:15 a.m.	3:00 p.m.		
Bus Route # 3	Morning	Afternoon	A <b>BLUE</b> magnet will identify this bus as a "Summer Camp bus.	
Jefferson School (parking lot)	7:50 a.m.	4:15 p.m.		
Holmes School (parking lot)	8:00 a.m.	4:05 p.m.		
Stanley Quarter Park (boat house)	8:05 a.m.	4:00 p.m.		
Arrive to camp / Pick up from camp	8:20 a.m.	3:45 p.m.		
Bus Route # 4	Morning	Afternoon	An <b>ORANGE</b> magnet will identify this bus as a "Summer Camp bus.	
Northend School (Bassett Street)	8:30 a.m.	3:35 p.m.		
Walnut Hill Park (gazebo across from Park Place)	8:40 a.m.	3:25 p.m.		
Lincoln School (Steele St bus loop)	8:50 a.m.	3:15 p.m.		
Vance School (parking lot)	8:55 a.m.	3:10 p.m.		
Arrive to camp / Pick up from camp	9:00 a.m.	3:00 p.m.		

# Leaders In Training Camp Grades 6-8

## Tuesday, June 21<sup>st</sup>- Friday August 5<sup>th</sup> Calling all youth leaders!

**Camp Description:** Camp Runs: Monday - Friday, 9:00 A.M. - 3:00 P.M.

Leaders In Training is a seven week leadership development summer camp. Young leaders develop and engage in daily programming in which they are taught skills to help strengthen their individual leadership. Throughout the seven weeks of camp, LIT's will focus on problem solving, group leadership, professionalism, character development, communication, teamwork, time management, decision making, safety, responsibility, and respect.

Candidates will undergo a screening process consisting of an in-person interview and two written letters of recommendation. Active participation is a requirement of the program and campers are encouraged to attend all seven weeks. Morning and afternoon bus transportation provided. Note: T-shirts included. Breakfast and lunch available.



**Friendship**



**Teamwork**



**Adventure**

### STEPS FOR APPLICATION PROCESS:

1. Obtain 2 letters of recommendation from a non-relative.
2. Fill out registration form.
3. Submit deposit (\$50), registration form and 2 letters of recommendation to the Parks and Recreation Department.
4. Applicants will be contacted to schedule an interview upon receipt of all completed documentation.
5. If candidate is accepted, the remaining balance of \$250 must be received before the start of camp on June 21<sup>st</sup>.

Activity Number: 2926-8 / Fee: \$300 per camper  
\$50 deposit due with registration, balance due before the first day of camp on Tuesday, June 21, 2022

**Mandatory Orientation**  
Thursday, June 16<sup>th</sup>

**Application Deadline**  
Friday, May 27<sup>th</sup>

For more information contact  
Megan Dowling at  
(860) 826-3356

*Note: Camp begins Tuesday, 06/21, No Camp Monday, 07/04*

# Downtown Players Youth Theatre Camp

Camp Runs: Monday - Friday, 9:00 A.M. - 3:00 P.M.



This year the Downtown Players Youth Theatre Camp will stage Disney's Frozen Jr., complete with music featured in hit Disney animated film. The story follows Princess Anna and Elsa as they discover Elsa's hidden powers and embark on an epic journey. Along the way, they meet some precarious characters that help them return to their home kingdom and put an end to an eternal winter.

Group members engage in show rehearsals, theatre workshops and recreational activities as they work towards an end of summer performances. Downtown Players offer campers an opportunity to focus and express their creativity and love for the performing arts. From singing, dancing, and acting to set/stage and costume design, there is shortage of ways for kids to express themselves creatively. Our goal is to provide campers an opportunity to be silly, develop friendships, explore their creativity, and create memories that will last a lifetime.

Location: Walnut Hill Park, Darius Miller Band Shell

Class Name	Day	Start/End Date	Ages	Fee	Activity #
FULL SUMMER	M-F*	06/21-08/05	7-14	\$475	2927-8
Week 1	Tu-F*	06/21-06/24	7-14	\$85	2927-1
Week 2	M-F	06/27-07/01	7-14	\$85	2927-2
Week 3	Tu-F*	07/05-07/08	7-14	\$85	2927-3
Week 4	M-F	07/11-07/15	7-14	\$85	2927-4
Week 5	M-F	07/18-07/22	7-14	\$85	2927-5
Week 6	M-F	07/25-07/29	7-14	\$85	2927-6
Week 7	M-F	08/01-08/05	7-14	\$85	2927-7

*\*Camp begins Tuesday, 06/21, No Camp Monday, 07/04*



### Show Night Information:

Downtown Players  
Youth Theatre Camp in:

## Disney's Frozen Jr.

Thursday, July 28, 2022  
(Rain Date: Friday, July 29, 2022)

7:00 p.m. at Walnut Hill Park,  
Darius Miller Band Shell

FREE ADMISSION



# New Britain Parks, Recreation & Community Services Department

## REGISTRATION FORM: Camp TotalRec 2022

RECEIVED IN OFFICE: \_\_\_\_\_  
PAID: [ ] Cash [ ] Check [ ] Credit  
STAFF INITIALS: \_\_\_\_\_

### SECTION 1: CAMP TOTALREC PROGRAM LOCATION SELECTION

*Camp TotalRec is for campers who have completed 1<sup>st</sup>-5<sup>th</sup> grade. This camp is for New Britain residents only. Camp TotalRec is offered at two sites; select the site location of your choice below:*

[ ] A.W. Stanley Park  
2251 Stanley Street

[ ] Willow Brook Park  
200 Mill Street

### SECTION 2: PARTICIPANT INFORMATION

Participant Name:	Grade (school year 2021-2022):	Date of birth:	Gender (circle one): <div style="display: flex; justify-content: space-around;"><span>Male</span><span>Female</span></div>
Address:		City:	State:      Zip Code:

### SECTION 3: ADDITIONAL PARTICIPANT INFORMATION

Does your child speak English?	[ ] YES [ ] NO	If no, what is your child's primary spoken language?
Does your child have special medical concerns/needs?	[ ] YES [ ] NO	[ ] Check here if you would like to have an individual accommodation conversation/ meeting with the parks and recreation coordinators and the participant.
Are reasonable accommodations necessary for your child to participate in any activities?	[ ] YES [ ] NO	

### SECTION 4: PARENT/GUARDIAN INFORMATION

Name:	Primary Phone:	Work Phone:	Cell Phone:
Relationship to Participant:	Email Address:		
Address:		City:	State:      Zip Code:

### SECTION 5: EMERGENCY CONTACT INFORMATION

*An emergency contact is someone other than the guardian who may be contacted in case of emergency.*

Name:	Primary Phone:	Work Phone:	Cell Phone:
Relationship to Participant:			
Address:		City:	State:      Zip Code:

### SECTION 6: CHILD RELEASE AUTHORIZATION AND ADDITIONAL EMERGENCY CONTACTS

*We encourage the same individual to drop off and pick up the participant each day. If necessary, the following individuals have permission to pick up my child (a valid ID is required at pick-up, written permission is required for any individual not listed below to pick up child).*

Name:	Primary Phone:	Cell Phone:	Relationship to Child:
Name:	Primary Phone:	Cell Phone:	Relationship to Child:
Name:	Primary Phone:	Cell Phone:	Relationship to Child:

### SECTION 7: DROP-OFF AND PICK-UP INFORMATION

Will the participant be dropped off and picked up by a parent/guardian?	[ ] YES [ ] NO	Bus stop location:	Please note that bus stop locations will be the same for both morning and afternoon
Will the participant ride the bus to and from camp?	[ ] YES [ ] NO		

Mail form to: New Britain Parks & Recreation Department  
27 West Main Street, Room 302, New Britain, CT 06051

## New Britain Parks, Recreation & Community Services Department

### SECTION 8: CAMP PROGRAM LOCATION AND FEE

Complete this section to enroll the participant in Camp TotalRec.

		A.W. Stanley Park			Willow Brook Park			
Week	Dates	Activity #	Fee	✓	Activity #	Fee	✓	Fee
Week 1	Tuesday, June 21 – Friday, June 24	2940-1	\$40.		2943-1	\$40.		
Week 2	Monday, June 27 – Friday, July 1	2940-2	\$40.		2943-2	\$40.		
Week 3	Tuesday, July 5 – Friday, July 8*	2940-3	\$40.		2943-3	\$40.		
Week 4	Monday, July 11 – Friday, July 15	2940-4	\$40.		2943-4	\$40.		
Week 5	Monday, July 18 – Friday, July 22	2940-5	\$40.		2943-5	\$40.		
Week 6	Monday, July 25 – Friday, July 29	2940-6	\$40.		2943-6	\$40.		
Week 7	Monday, August 1 – Friday, August 5	2940-7	\$40.		2943-7	\$40.		
ALL	ALL 7 WEEKS	2940-8	\$250.		2943-8	\$250.		
*CAMP CLOSED Monday, July 4 in observance of Independence Day								TOTAL: \$

### SECTION 9: OPTIONAL CAMP CLUBHOUSE PROGRAM

Complete this section to continue the enrollment process to register the participant in the optional before and after care program, Camp Clubhouse.

Camp Clubhouse takes place at the site where the participant attends Camp TotalRec.		Morning starting at 7:30am		Afternoons until 5:30pm		TOTAL WEEKLY FEE
Week	Dates	Fee	✓	Fee	✓	
Week 1	June 21 – June 24	\$25.		\$35.		
Week 2	June 27 – July 1	\$25.		\$35.		
Week 3	July 5 – July 8*	\$25.		\$35.		
Week 4	July 11 – July 15	\$25.		\$35.		
Week 5	July 18 – July 22	\$25.		\$35.		
Week 6	July 25 – July 29	\$25.		\$35.		
Week 7	August 1 – August 5	\$25.		\$35.		
ALL	ALL 7 WEEKS	\$175.		\$245.		
TOTAL:						\$

### SECTION 10: OPTIONAL FIELD TRIPS

Participant must be enrolled in Camp TotalRec for the week the trip occurs. The deadline to register for each field trip is two weeks prior to the trip. Field trips are optional; camp is still open for campers who do not register for trips.

Trip	Date	Fee	✓
	Activity #		
Day at the Movies	Wednesday, July 6	\$17.00	
	2830		
Fun City Trampoline Park	Wednesday, July 13	\$24.00	
	2831		
Spare Time Bowling	Wednesday, July 20	\$24.00	
	2832		
Registration deadline closes two weeks prior to the trip.			
TOTAL:		\$	

If the camp program is cancelled due to COVID-19, refunds will be issued for the weeks affected (partial weeks will be prorated)

### SECTION 11: TOTAL AMOUNT DUE

Payment may be made by cash, check, or credit card. Checks may be made payable to New Britain Parks and Recreation Department.

Would you like to make a (optional) donation to the Program Assistance Fund? If yes, please indicate the amount:	\$	TOTAL AMOUNT DUE (enter the total from section 8, 9 and 10):	\$
--	----	--	----

### SECTION 12: PARENT/GUARDIAN SIGNATURE

I, the undersigned, being desirous of participating in the event/program above designated being sponsored by the Department of Parks, Recreation and Community Services of the City of New Britain, do state and agree to the following terms and conditions of participation: 1) I agree and understand the nature and risks associated with this activity, including the risks of suffering personal injury and/or property damage during the course of the event/program; 2) I understand that this event/program is a non-profit recreational event/program and agree to waive on my behalf, or the behalf of the participant, any claim I and/or the participant may have against the City, any agent or employee of the City, any sponsor of the event/program, or any volunteer assisting in the event/program as a condition of my participation; 3) If the participant in the event/program is a minor (under the age of eighteen (18) years), I represent that I am the parent or legal guardian to consent to such minor's participation in this event/program; 4) This also gives permission for my child to be transported off park/school grounds for special field trips without additional permission. Ample notification of trips will be given; 5) I give consent for my child to participate in evaluations conducted at the program. I understand that his/her answers to questionnaires will be anonymous and confidential. They will be used only to evaluate the quality and effectiveness of the programs; 6) I give permission to the New Britain Parks, Recreation and Community Services Department to photograph and videotape my child for various media promotions; 7) I understand that all information on this registration form is subject to verification and may affect eligibility for this program.

Parent/Guardian Signature: \_\_\_\_\_

Date: \_\_\_\_\_

Mail form to: New Britain Parks & Recreation Department  
27 West Main Street, Room 302, New Britain, CT 06051



## New Britain Parks, Recreation & Community Services Department

# PARTICIPANT MEDICAL AND HEALTH FORM

One form per participant must be filled out by a parent/guardian and returned to the Parks and Recreation Department to be kept on file. This form is to assist us in making individual assessment of participant needs and reasonable accommodations.

### PARTICIPANT INFORMATION:

Participant Name:	Nickname:	Date of birth:	Gender (circle one): <div style="display: flex; justify-content: space-around; font-size: small;">Male      Female</div>	
Address:		City:	State:	Zip Code:
School Attending:	Grade:	Approx. Height:	Approx. Weight:	

### PARENT/GUARDIAN INFORMATION:

Name:	Primary Phone:	Work Phone:	Cell Phone:	
Relationship to Participant:	Email Address:			
Address:		City:	State:	Zip Code:

### EMERGENCY CONTACT INFORMATION *(someone other than the guardian who may be contacted in case of an emergency):*

Name:	Primary Phone:	Work Phone:	Cell Phone:	
Relationship to Participant:				
Address:		City:	State:	Zip Code:

### MEDICAL INFORMATION:

Primary Care Physician:	Office Phone:	If your child does not have health insurance, call 1-877-CT-HUSKY
Address:		
Dentist:	Office Phone:	
Address:		

### HEALTH HISTORY:

<b>Medications:</b>	The Parks and Recreation Department staff is not medication administration certified; they will not administer medication to participants. Be advised that there is no nurse on duty during recreation activities.	1. Does the participant take any medication?	[   ] Yes [   ] No
		2. Does the participant carry an epinephrine pen?	[   ] Yes [   ] No
		3. Does the participant carry rescue inhaler?	[   ] Yes [   ] No
<b>Immunizations:</b>	All participants must be up-to-date on immunizations.		

Mail form to: New Britain Parks & Recreation Department  
27 West Main Street, Room 302, New Britain, CT 06051

## New Britain Parks, Recreation & Community Services Department

### HEALTH HISTORY (continued):

<b>Allergies:</b>	Does the participant have any food, medication, or environmental allergies?		[ <input type="checkbox"/> ] Yes [ <input type="checkbox"/> ] No
	If "yes", indicate allergy, reaction, and management or care taken.		
	Allergy:	Reaction:	Management/care:
	Allergy:	Reaction:	Management/care:
	Allergy:	Reaction:	Management/care:

### GENERAL WELLNESS:

Does the participant have any of the following?

1. Any recent injury, illness or chronic disease?	[ <input type="checkbox"/> ] Yes [ <input type="checkbox"/> ] No	Please use additional space below to explain any "yes" answers:
2. Ever been dizzy/passed out during physical exercise?	[ <input type="checkbox"/> ] Yes [ <input type="checkbox"/> ] No	
3. Ever had seizures/diagnosed with seizure disorder?	[ <input type="checkbox"/> ] Yes [ <input type="checkbox"/> ] No	
4. Ever had surgery? If yes, please list below.	[ <input type="checkbox"/> ] Yes [ <input type="checkbox"/> ] No	
5. Have difficulty with vision, hearing, or speech?	[ <input type="checkbox"/> ] Yes [ <input type="checkbox"/> ] No	
6. Have any restrictions to activities?	[ <input type="checkbox"/> ] Yes [ <input type="checkbox"/> ] No	

### ADDITIONAL INFORMATION:

Please provide any additional information about the participant's behavior and/or physical, emotional or mental health concerns that the Parks and Recreation Department should be aware of to accommodate the participant.

Would you like to have an individual accommodation conversation/meeting with the program coordinator?	[ <input type="checkbox"/> ] Yes [ <input type="checkbox"/> ] No
May we speak to school-day staff about your child?	[ <input type="checkbox"/> ] Yes [ <input type="checkbox"/> ] No

### PARENT/GUARDIAN SIGNATURE:

I attest the information above is correct and complete to the best of my knowledge. The participant herein may engage in all recreation program activities, except as noted. I give permission to the New Britain Parks and Recreation Department to seek emergency medical treatment when needed. I agree to the release of any information for the necessary treatment or referral purposes. If I cannot be reached in the event of an emergency, I hereby give permission to the New Britain Parks and Recreation Department to arrange necessary transportation for the participant and give permission to the physician on duty to secure and administer treatment, including hospitalization.

Parent/Guardian Signature: \_\_\_\_\_

Date: \_\_\_\_\_

Mail form to: New Britain Parks & Recreation Department  
27 West Main Street, Room 302, New Britain, CT 06051

# Piano & Voice Lessons

Each session is composed of 4-8 half-hour lessons.

Piano students should have daily access to a piano for the entire session. A full-sized (61-key) keyboard is sufficient for beginning students.

Location:  
City Hall,  
Room 505

AGE/SKILL

REQUIREMENT:

Piano lessons: 8 years old

Voice lessons: 11 years old  
(beginner & intermediate)



## Summer Session (8 lessons)

Day	Start/End Date	Start/End Time	Fee	Activity #
M	06/27/22-08/23/22	4:00-4:30pm	\$130	2030-1
M	06/27/22-08/23/22	4:30-5:00pm	\$130	2030-2
M	06/27/22-08/23/22	5:00-5:30pm	\$130	2030-3
M	06/27/22-08/23/22	5:30-6:00pm	\$130	2030-4
Tu	06/28/22-08/24/22	4:00-4:30pm	\$130	2031-1
Tu	06/28/22-08/24/22	4:30-5:00pm	\$130	2031-2
Tu	06/28/22-08/24/22	5:00-5:30pm	\$130	2031-3
Tu	06/28/22-08/24/22	5:30-6:00pm	\$130	2031-4
Tu	06/28/22-08/24/22	6:00-6:30pm	\$130	2031-5
W	06/29/22-08/25/22	4:00-4:30pm	\$130	2032-1
W	06/29/22-08/25/22	4:30-5:00pm	\$130	2032-2

## Fall Session I (4 lessons)

Day	Start/End Date	Start/End Time	Fee	Activity #
M	09/12/22-10/03/22	4:00-4:30pm	\$65	2080-1
M	09/12/22-10/03/22	4:30-5:00pm	\$65	2080-2
M	09/12/22-10/03/22	5:00-5:30pm	\$65	2080-3
M	09/12/22-10/03/22	5:30-6:00pm	\$65	2080-4
Tu	09/06/22-09/27/22	4:00-4:30pm	\$65	2081-1
Tu	09/06/22-09/27/22	4:30-5:00pm	\$65	2081-2
Tu	09/06/22-09/27/22	5:00-5:30pm	\$65	2081-3
Tu	09/06/22-09/27/22	5:30-6:00pm	\$65	2081-4
Tu	09/06/22-09/27/22	6:00-6:30pm	\$65	2081-5
W	09/07/22-09/28/22	4:00-4:30pm	\$65	2082-1
W	09/07/22-09/28/22	4:30-5:00pm	\$65	2082-2

## Fall Session II (8 lessons)

Day	Start/End Date	Start/End Time	Fee	Activity #
M	10/17/22-12/12/22	4:00-4:30pm	\$130	3030-1
M	10/17/22-12/12/22	4:30-5:00pm	\$130	3030-2
M	10/17/22-12/12/22	5:00-5:30pm	\$130	3030-3
M	10/17/22-12/12/22	5:30-6:00pm	\$130	3030-4
Tu	10/18/22-12/13/22	4:00-4:30pm	\$130	3031-1
Tu	10/18/22-12/13/22	4:30-5:00pm	\$130	3031-2
Tu	10/18/22-12/13/22	5:00-5:30pm	\$130	3031-3
Tu	10/18/22-12/13/22	5:30-6:00pm	\$130	3031-4
Tu	10/18/22-12/13/22	6:00-6:30pm	\$130	3031-5
W	10/19/22-12/14/22	4:00-4:30pm	\$130	3032-1
W	10/19/22-12/14/22	4:30-5:00pm	\$130	3032-2

Please Note: A piano recital is planned for the end of the program. Instructor William Hively will notify participants of the date.

## Veterans Events...

### Memorial Day Cemetery Services

Thursday, May 26, 2022,  
6:00pm-7:00pm  
at Fairview Cemetery

### Memorial Day Services

Monday, May 30, 2022,  
8:00am-12:30pm  
Ceremonies at memorial monuments  
call (860) 826-3362 for a schedule.

### Memorial Day Parade

Monday, May 30, 2022,  
Parade starts at 6:00pm  
at the top of Broad Street.

### Veterans Day Services

Friday, November 11, 2022  
11:00am at Central Park  
Call (860) 826-3362 for more information.

### VETERANS COMMISSION:

Commissioner John Buckley  
Commissioner Terry Crescimanno  
Commissioner Christian Gutierrez  
Commissioner David Hernandez Jr.  
Commissioner Daniel Luty  
Commissioner Luis Orriola  
Commissioner Jose Rosado  
Commissioner Mona Starczewski  
Commissioner Jamie Vaughan

## Fairview Cemetery Info...

120 Smalley Street, New Britain, CT 06051; (860) 826-3495

Cemetery grounds are open daily from sunrise until sunset.

Office Hours: Monday-Friday 8:15 A.M. - 3:45 P.M.\*

\*Please be aware that it is sometimes necessary for the Cemetery Administrator to leave the office, and occasionally the cemetery grounds during the business day. Please call ahead before visiting the office.

### Fairview Cemetery Staff Staff

Director of Parks, Recreation & Community Services.....Erik Barbieri  
Cemetery General Foreman.....Jason Karvoski  
Cemetery Administrator.....Michael B. Pastore  
Cemetery Maintainer.....Juan Evangelista  
Cemetery Maintainer.....Paul Miller

Fairview Cemetery has been serving the greater New Britain community for well over two hundred and fifty years. Established in 1756, Fairview is among the areas oldest and most historic burial grounds. This majestic one hundred acre city within a city, is home to over thirty-eight thousand interments, with room for thousands more. Fairview Cemetery has grown while New Britain has grown around it, all the while maintaining its pastoral abundance, with winding roads and mature trees. Administered by the City of New Britain, Parks & Recreation Department, Fairview Cemetery continues to be one of the area's foremost non-sectarian cemeteries.

### Fairview Cemetery Commission Members

Chairperson Kent Carlson  
Commissioner Andrea Holbrook  
Commissioner Jennifer Johnson  
Commissioner Elizabeth Nkonoki-Ward

The Fairview Cemetery Commission meets quarterly, on the second Tuesday of January, April, July and October. Meetings are typically held in room 305 of City Hall at 6:00 P.M. Schedule subject to change. Please confirm all dates and locations with the Cemetery Office or the Town Clerk's Office.

## New Britain Sports Contacts...

### New Britain Little League:

Plays at A.V. Stanley, Stanley Quarter, and Martha Hart Parks.  
Antonio Velazquez, President: NBLLPresident1@gmail.com

### Peter Kokinis Baseball League:

www.kokinisbaseball.com

### Miscellaneous:

- Boys & Girls Club: (860) 229-2865
- Y.M.C.A.: (860) 229-3787
- Y.W.C.A.: (860) 225-4681

### P.A.L. Youth Sports:

Plays at Osgood Park.  
Officer Corey Thomas, Director: (860) 827-4560

### New Britain Jr. Hurricanes:

Plays at Chesley Park  
Lisa Samuels, President: (860) 515-8132

### New Britain Soccer:

Plays at Willow Brook, Stanley Quarter, and Chesley Parks.  
For more information email: newbritainsoccer@gmail.com



# Tennis Lessons

## Summer Tennis

### at Willow Brook Park Tennis Courts

#### Beginner to Advance Tennis Lessons Session 1

##### **AGES 6-8**

Day	Start/End Date	Start/End Time	Fee	Activity#
Tu,Th	06/28-07/28	4:00-5:00pm	\$80	2701-1

##### **AGES 9-12**

Day	Start/End Date	Start/End Time	Fee	Activity #
Tu,Th	06/28-07/28	5:00-6:00pm	\$80	2702-1

##### **AGES 13-17**

Day	Start/End Date	Start/End Time	Fee	Activity #
Tu,Th	06/28-07/28	6:00-7:00pm	\$80	2703-1

##### **ADULT (AGES 18 & UP)**

Day	Start/End Date	Start/End Time	Fee	Activity #
Tu,Th	05/28-07/28	7:00-8:00pm	\$80	2704-1

Class instruction includes tips on forehand, backhand, volley, and serve. Court time drills, ladder tournaments are included. Note: If needed, classes that were cancelled due to inclement weather will be made up on Fridays.

Location: Willow Brook Park Tennis Courts

#### Beginner to Advance Tennis Lessons Session 2

##### **AGES 6-8**

Day	Start/End Date	Start/End Time	Fee	Activity#
Tu,Th	08/02-08/25	4:00-5:00pm	\$80	2701-2

##### **AGES 9-12**

Day	Start/End Date	Start/End Time	Fee	Activity #
Tu,Th	08/02-08/25	5:00-6:00pm	\$80	2702-2

##### **AGES 13-17**

Day	Start/End Date	Start/End Time	Fee	Activity #
Tu,Th	08/02-08/25	6:00-7:00pm	\$80	2703-2

##### **ADULT (AGES 18 & UP)**

Day	Start/End Date	Start/End Time	Fee	Activity #
Tu,Th	08/02-08/25	7:00-8:00pm	\$80	2704-2

Class instruction includes tips on forehand, backhand, volley, and serve. Court time drills, ladder tournaments are included. Note: If needed, classes that were cancelled due to inclement weather will be made up on Fridays.

Location: Willow Brook Park Tennis Courts

## Fall Tennis

### at Willow Brook Park Tennis Courts

#### Youth Tennis Lessons

##### **AGES 7-10**

Day	Start/End Date	Start/End Time	Fee	Activity#
Sa	09/10-10/15	11:00am-12:00pm	\$50	3701-1

##### **AGES 14-17**

Day	Start/End Date	Start/End Time	Fee	Activity #
Sa	09/10-10/15	12:00-1:00pm	\$50	3703-1

Class instruction includes tips on forehand, backhand, volley, and serve. Court time drills, ladder tournaments are included. Note: If needed, classes that were cancelled due to inclement weather will be made up on Fridays.

Location: Willow Brook Park Tennis Courts

#### Middle School Team Tennis

##### **GRADES 6-8**

Day	Start/End Date	Start/End Time	Fee	Activity#
Sa & W	09/10-10/15	2:00-3:30pm	\$65	3776-1
	09/14-10/19	4:30-6:00pm		

This program focuses on the full experience of tennis and will encourage players to gain match experience, develop their skills through level-based play, and demonstrate good sportsmanship. The objective will be to provide a fun and social environment that highlights character and skill development. All scheduled days will be hosted at the tennis courts at Willow Brook Park. Girls and Boys under the age of 18, and are looking to hone their skills are encouraged to join.

Location: Willow Brook Park Tennis Courts

#### Drill & Play

##### **ADULT (AGES 18 & UP)**

Day	Start/End Date	Start/End Time	Fee	Activity#
Sa	09/10-10/15	1:00-2:00pm	\$50	3770-1

Skill building drills and ladder tournaments, as well as a state wide tournament. Home matches, away matches, and jamboree style tournaments are scheduled. The home matches will be played at the Tennis Courts at Willow Brook Park.

Location: Willow Brook Park Tennis Courts



## Yoga Classes taught by Kelly Murphy

### FREE Yoga at Walnut Hill Park Rose Garden

June - August; Tuesdays & Thursdays, 6:00pm-7:00pm;  
Saturdays, 9:00am-10:00am; Ages 18 & up

Sponsored by the New Britain Health Department

### Fall Yoga at Walnut Hill Park Rose Garden

Wednesdays, September 7<sup>th</sup> - October 12<sup>th</sup>  
from 6:00pm-7:00pm; Fee: \$40 per person  
Activity #:3066-1; Ages 18 & up

# New Britain PARKS, RECREATION and Community Services Department



## Start Smart Soccer

Ages 3-5

This program prepares children for organized soccer without the threat of competition or getting hurt. Parent and child pairs work together in age appropriate lessons on kicking; dribbling, trapping, throw-ins and agility.

Tuesdays, 09/14 - 10/05,  
from 5:00 - 6:00 P.M.

Saturdays, 09/17-10/08,  
from 10:00-11:00 A.M.

Location: Willow Brook  
Park Soccer Fields  
Fee: \$70.00 per child  
Activity # 2733-1



## Summer Basketball Clinics



These clinics will have a focus on offensive and defensive skill development and building positive habits that lead to better efficiency on the basketball court. Players will perform drills that improve their basketball IQ and that improve the impact they make from an individual and team aspect. Emphasis will be placed on effective ball handling, moving without the ball to get open through using screens and effective cutting, perfecting offensive scoring moves, proper shooting form and mechanics, making smart decisions with and without the basketball, and improving and developing a defensive mindset. Little Ballers Basketball

### Grades 3-5

Day	Start/End Date	Start/End Time	Fee	Activity#
Tu,Th	07/05-08/04	05:00pm-06:00pm	\$125	2050-1

### Ally Oop Basketball

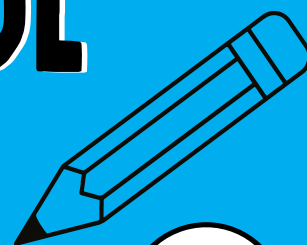
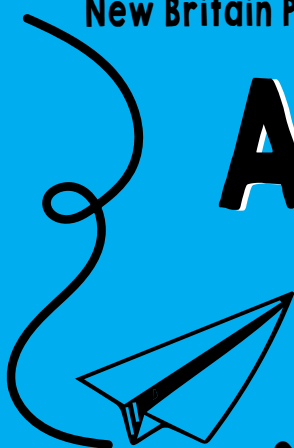
### Grades 6-8

Day	Start/End Date	Start/End Time	Fee	Activity #
Tu,Th	07/05-08/04	06:00pm-07:00pm	\$125	2050-2

Location: TBD

## New Britain Parks, Recreation and Community Services Department

# AFTER SCHOOL PROGRAM



**FREE!**

September 26, 2022- May 26, 2023  
After school until 5:45pm \*Full days of school

## Every Kid Counts

3rd - 5th grade

Chamberlain • DiLoreto • Gaffney  
Holmes • Jefferson • Lincoln • Northend  
Smith • Smalley • Vance

## "Exercise the Right Choice"

6th - 8th grade

Pulaski & Slade  
Middle School



# Stanley Golf Course



245 Hartford Road.  
New Britain, CT

If you **LIVE, WORK** or **OWN PROPERTY** in New Britain/Newington,  
you can qualify for a **20% DISCOUNT** for all your golf!  
Also available to **ALL VETERANS**

Teachers, policepersons, firepersons, restaurant workers, retail employees, & others can now golf for reduced rates. Simply make a one time visit to the Pro Shop with your \*REQUIRED DOCUMENTATION showing that you qualify for this offer to get your photo ID "Benefits Card".

#### Benefits Card Price:

\$5.00 (if you LIVE in New Britain/Newington)

\$25.00 (if you WORK or OWN PROPERTY in New Britain/Newington)

FREE (if you are a Veteran)

#### \*Required Documentation to show:

Live in New Britain/Newington:

Two forms of ID

Own property in New Britain/Newington:

Tax Bill

You work in New Britain/Newington:

Pay stub

You are a Veteran:

DD214 or Vet I.D.

#### **Heated & Lighted Driving Range!**

##### Driving Range Rates:

Small bucket (33 balls).....\$6.00

Medium bucket (66 balls).....\$9.00

Large bucket (99 balls).....\$12.00

Stanley Golf Course is a 27-hole golf course with three 9-hole courses named Blue, Red, and White. A distinguishing feature is that the topography and surrounding environment is different on each of the three courses. The holes are all different, challenging, and exciting. Start times are taken in person, over the phone at (860)827-1362 or on-line, 5 days in advance for weekday, weekend and Holiday play.

#### **Host a league or outing at Stanley:**

S.G.C. is a popular choice for area golf outings. Whether it is a 216 player charity event or a 20 player corporate league, we work hard to ensure your satisfaction. Our 2022 calendar is filling up quickly. For more information contact S.G.C. Professional Howie Friday at (860)827-8570

#### **Stanley's teaching and learning academy:**

Lessons and Clinics run by the Stanley Teaching Academy are taught by qualified teaching professionals. A fun, comfortable learning environment for people who want to either get started the right way, are returning to the game, or want to freshen up on the basics. Stanley Teaching Academy will provide equipment if needed. For more information contact S.G.C. PGA Pro Howie Friday (860) 827-8570.

#### **Stanley Men's Golf Club:**

Stanley Men's Club plays an 18 hole-round of golf typically on Sunday mornings with tee times starting at 8:00AM. We play competitively in varied individual and team events throughout the year. Membership benefits include: GHIN handicap, prizes, and (5) major championships. If you have questions or need more information, email stanleymensclub@att.net.

#### **Stanley Senior Men's Golf Club:**

The Senior Men's Golf Club offers players 55 and older the opportunity to engage in camaraderie and competitive play. We offer the opportunity to play a home/home tournament against the Timberlin Senior Men's Club as well as an 18 hole tournament against the Rockledge Senior Men's Club. Tournaments are generally 9 hole events, with coffee and cake after play is finished. Tournaments are held approximately twice a month on Wednesday. If interested in joining the Stanley Senior Men's Golf Club, see the link under "Membership" on the Stanley Golf Course web site.

#### **Stanley Women's Golf Club:**

Stanley Women's Golf Club plays an 18 hole-round of golf in varying individual and team events every other Saturday. Membership is open to all women 16 year of age and older with Membership Dues for new members at \$90.00. It covers the cost of prizes and a GHIN handicap. If you have any questions or need more information, please email Club President Jean Trzasko at jet7golf@aol.com.

Follow us on facebook, check us out on the web at [stanleygolf.com](http://stanleygolf.com) or call (860)827-8570 for more information.



For more information call:  
(860) 223-8531 or visit:  
[www.backnine-tavern.com](http://www.backnine-tavern.com)

245 Hartford Road, New Britain, CT





# New Britain Parks Guide

**A.W. Stanley Park**..... 2 baseball diamonds (Little League)  
2159 Stanley Street

1 basketball court  
Fishing pond  
Nature trail  
Playscape  
Picnic areas (with grill)  
Ping Pong Table  
Swimming pool

**Central Park**..... Lunchtime Concerts (June)  
230 Main Street Farmers' Market (July-October)  
Christmas Tree Lighting (December)

**Chedley Park**..... 2 basketball courts  
35 Wildwood Street 1 handball court  
Pavilion with picnic area  
Playscape  
3 softball diamonds (lighted)  
2 tennis courts  
William A. DeMaio Athletic Complex  
Splash pad

**Martha Hart Park**..... 2 baseball diamonds (Little League)  
135 Corbin Avenue 1 basketball court  
Fishing pond  
Swings

**Osgood Park**..... 2 basketball courts  
460 Osgood Avenue 1 football field (lighted)  
Playscape  
2 softball diamonds  
*Coming Soon: New Playground,  
Splash Pad, Basketball Court,  
Walking Path, and Pavilion!*

**Stanley Quarter Park**..... 7-station fit trail  
451 Blake Road (Sponsored by LTC Construction)  
1 baseball diamond (Little League)  
1 baseball diamond (hardball)  
1 basketball court  
Children's fishing pond  
Pavilion

(Stanley Quarter Park Continued)

Playscape  
Skate park  
Softball diamonds  
2 soccer fields  
6 tennis courts  
0.6 mile walking path

**Walnut Hill Park**..... 1 cricket field  
184 West Main Street 10-station fit trail  
(sponsored by the Schaller Auto World Fund  
and the Community Foundation of Greater NB)  
2 baseball diamond (1 L. League, 1 hardball)  
Darius Miller Concert Shell  
Concessions gazebo (seasonal)  
Rose garden with scenic overlooks  
Pickle Ball Courts  
Playscape  
1 softball diamond  
Tennis courts  
1-mile walking loop

**Washington Park**..... 2 basketball courts  
61 Carmody Street Playscape  
1 softball diamond  
Bark Park (dog park)

**Willow Brook Park**..... Beehive Baseball Stadium (high school)  
653 South Main Street New Britain Baseball Stadium  
(home of the New Britain Bees)  
Playscape  
4 soccer fields  
Swimming pool  
6 tennis courts  
Veterans Stadium  
(football / soccer / 9-lane track)

**Willow Street Park**..... 70-foot pavilion with picnic tables  
43 Willow Street: 2 basketball courts  
2 bocce courts  
Life-size chess and checkerboard  
Play field  
Playscape  
Shuffleboard  
Splash pad

*See the  
back cover for a  
look at the new  
Osgood Park!*

# Senior Center



The New Britain Senior Center, located at 55 Pearl Street, is a place for senior individuals or groups to come together for services and activities which enhance their involvement in the community. Some of the services and activities available at the New Britain Senior Center includes: Dial-A-Ride transportation services, community support services which access entitlement programs for the elderly, health and wellness clinics, nutritional programs, trip and travel activities, exercise/dance programs as well as a variety of creative art programs.

The New Britain Senior Center also serves as a community resource for information on problems and issues. The Senior Center interacts with other elderly services throughout the community and advocates for the needs of the population in order to solve problems.

## Senior Center Info

### Location:

55 Pearl Street, New Britain, CT 06051

### Hours of Operation:

8:15A.M. to 4:00P.M., Monday-Friday

### Membership Info:

Area seniors, ages 55 and over, are welcomed to join the New Britain Senior Center.

### Membership Cost:

Residents: \$3.00 for lifetime membership!

Non-Residents: \$10.00 per year

### Contact Info:

Phone Number: (860) 826-3553

Fax Number: (860) 826-3557

Website: [www.newbritainct.gov](http://www.newbritainct.gov)

## Senior Center Breakfast Bar

Early riser? Swing by the breakfast bar! Stop in anytime after 8:15am for a bite. Read the paper, do a crossword, or just shoot the breeze. Come on down for the best prices in town!

### BREAKFAST BAR INCLUDES:

Coffee.....	\$0.50	Juice.....	\$0.50	English Muffin.....	\$0.50
Tea.....	\$0.50	Bottled Water.....	\$0.50	Toast.....	\$0.50
Hot Chocolate.....	\$0.50	Bagel.....	\$0.50		

## Central Park Farmers Market

On Wednesdays from June through October, the New Britain Senior Center will be at the Central Park Farmers Market selling flowers, herbs, and vegetables grown in the Arnold Schwartz Greenhouse. All proceeds from these sales go towards events and programming at the New Britain Senior Center.



## Lunch Program by CW Resources

Meals are served from 12:00 P.M. to 1:00 P.M. each weekday. Per CW Resources, there is a suggested donation of \$2.50. To reserve a meal, you must register at least one day in advance.

New Participants: Call one day in advance to sign up. When you come for lunch, see Novelette in the cafeteria to fill out a registration form.

To reserve a lunch please call: (860) 826-3553  
Monday-Friday, between 10:00A.M. and 12:00 P.M.

## Hardware City Travelers

Open to Senior Center Members.

Members may also register their friends and family!

For a listing of current trips please call Rex Cone at (860) 826-5291.



## Dial-A-Ride

Need a ride? We'll pick you up! At least a 48-hours notice is required for rides to the Senior Center, medical appointments, shopping and other destinations at any time within the month. Call (860) 826-3555 for an appointment. There is a suggested donation of \$1.50 each way.

## Commission on Aging:

Chairperson Helen Mary Schwartz

Commissioner Adrian Cieplinski, Commissioner Helen Cieslowski,

Commissioner David Courter, Commissioner Judith Dunn,

Commissioner Roseanne Sherburne, Commissioner S. Wendy Whicher

# Events & Programs - New Britain Senior Center

Events and Programs are offered exclusively to active members of the New Britain Senior Center and are free of charge unless otherwise noted.

Frequency	Occurrence	Start Time	End Time	Event Name
Weekly	Monday	8:30am	9:00am	Fitness w/ Chris (Session 1)
Weekly	Monday	9:15am	9:45am	Fitness w/ Chris (Session 2)
Weekly	Monday	10:00am	10:30am	Fitness w/ Chris (Session 3)
Weekly	Monday	10:45am	11:15am	Line Dancing (Session 1)
Weekly	Monday/Wednesday	10:00am	12:00pm	Greenhouse Club
Weekly	Monday/Thursday	1:00pm	3:00pm	Bingo
Weekly	Tuesday	8:30am	9:00am	Fitness w/Chris (Session 4)
Weekly	Tuesday	9:15am	9:45am	Fitness w/ Chris (Session 5)
Weekly	Tuesday	10:00am	10:30am	Fitness w/ Chris (Session 6)
Weekly	Tuesday	10:45am	11:15am	Line Dancing (Session 2)
Weekly	Tuesday	1:00pm	2:00pm	Wii Bowling
Weekly	Tuesday	1:00pm	2:00pm	Healthy Balance Chair Yoga
Weekly	Tuesday/Thursday	9:00am	12:00pm	Craft Group (Session 1)
Weekly	Tuesday/Thursday	1:00pm	3:00pm	Craft Group (Session 2)
Weekly	Tuesday/Thursday	1:00pm	3:00pm	Clean Break Billiards Club
Weekly	Wednesday	10:00am	2:00pm	Pinochle Group
Weekly	Wednesday	10:00am	11:00am	Tai Chi & Qigong
Weekly	Wednesday	10:00am	11:00am	Afternoon Dancing
Weekly	Thursday	8:30am	9:00am	Fun Drumming
Weekly	Thursday	9:00am	10:00am	Zumba Gold
Weekly	Thursday	10:00am	11:00am	Chair Yoga
Weekly	Thursday	1:00pm	2:00pm	Art Class
Weekly	Friday	9:00am	11:30pm	Cornhole/Shuffleboard Open Play
Weekly	Friday	1:00pm	2:00pm	Fit & Flex
Monthly	Third Tuesday	1:00pm	2:30pm	Book Club
Monthly	Third Wednesday	11:00am	1:00pm	New Member Open House
One-Time	05/18/2022	10:30am	4:00pm	"Dancing Dream" ABBA Tribute Band*
One-Time	05/26/2022	5:00pm	8:00pm	The Bees' Knees; Senior Citizen Ragtime Runway Show
One-Time	06/15/2022	10:30am	4:00pm	"I Write The Songs" The Music of Barry Manilow*
One-Time	10/14/2022	8:00am	12:30pm	North Region Disability Employment Resource Fair

\*This event is being offered at a fee; please contact the New Britain Senior Center for more information.

## Senior Center Thrift Shop

Open: Monday, Wednesday, Friday  
9:30 A.M. - 2:00 P.M.  
Provided by C.C.A.R.C.

## Monthly Manicures

Schedule you appointment  
for a FREE manicure!  
Call (860) 826-3553

## Senior Lecture Series

May - October  
Call the New Britain Senior Center  
at (860) 826-3553 for a full schedule.

**Please be aware that the schedule and variety of programs offered is subject to change.  
Please contact the New Britain Senior Center at (860) 826-3553 for up to the minute information.**



# Community Services

## Who we are:

The Community Services Department is comprised of multiple divisions that provide direct contact with the public and offer a wide range of valuable services and programs that benefit individuals, families, businesses, and the general fabric of the community. Our divisions and their respective Commissions include: Youth & Family Services, Persons with Disabilities, and Fair Rent.

## What we do:

Under policies set forth by the Commission on Youth & Family Services, New Britain Youth & Family Services (NBYS) is a multifaceted agency that provides prevention, intervention, treatment, and aftercare services to New Britain's (and in some cases surrounding towns) at-risk and troubled youth population and their families. Its structure is based upon documented needs in the community as well as available funding, of which a large percentage originates from grant sources.

## COMMUNITY SERVICES STAFF

Community Services Administrator..... Mallory Deprey  
 Youth Advocate..... Omar McDew  
 Disabilities Services Advocate..... June O'Leary  
 Homeless Prevention & Housing Coordinator..... Mary Smith-Floyd  
 Prevention Coordinator..... Tyshaunda Wiley  
 Marriage and Family Therapist Supervisor..... Robb Ledder  
 Administrative Assistant..... Mona Starczewski

## COMMISSION ON YOUTH AND FAMILY SERVICES:

Chairperson Jason Gibson  
 Commissioner Jennese Birritteri  
 Commissioner Elizabeth Crespan  
 Commissioner Ann Dilling  
 Commissioner Salvatore Germano  
 Commissioner Amy Goode  
 Commissioner Megan Hill  
 Commissioner Sarah Wild-Jones

## COMMISSION ON PERSONS WITH DISABILITIES:

Chairperson Antonio Orriola  
 Commissioner Robert Berriault  
 Commissioner Alice Kondracki  
 Commissioner Tracy Kralik  
 Commissioner Melody Rivera  
 Commissioner Alicia Rostkowski  
 Commissioner Tom Talalay

## Fair Housing

### What is Fair Housing?

Fair Housing gives the right for people to own, sell, purchase, or rent safe, decent housing of their choice without fear of discrimination. State and federal fair housing laws prohibit discrimination and require that all people have an equal opportunity to housing of their choice.

### What does the Fair Housing Law do?

Fair Housing laws are intended to allow everyone equal access to housing and makes it illegal to discriminate against anyone based on race or color, national origin, religion, sex, marital status, age, familial status, disability, lawful source of income, gender identity or expression, and veteran status

### Fair Housing Tips...

PROTECT your belongings with renters insurance!

REPORT repairs needed/environmental health concerns to landlord in writing immediately! Pay your rent on time- even if apartment needs repairs!

OBTAIN rent/security deposit receipts when you pay.

MAINTAIN for your record, even if you move! Rent cannot be increased until lease expires!

If YOU suspect discrimination in housing, Call the New Britain Community Services Fair Housing Program (860) 826-3366

## Celebrating the 32nd Anniversary of the ADA!



**Join the Annual  
"WALK & ROLL"  
ABILITY AWARENESS DAY**

The event begins at the  
**Darius Miller Band Shell**  
with a one mile walk/roll around  
**Walnut Hill Park**

**\*FREE\***  
 \*T-SHIRTS (registration required by 6/30/2022)  
 \*RAFFLES \*REFRESHMENTS  
 \*Prizes for best decorated wheels!

**Wednesday  
July 20, 2022  
5:00 p.m. - 7:00 p.m.**

**Rain date July 27, 2022**

**Help Support Persons with Disabilities in New Britain!**

- Informational booth displaying products and services for persons with disabilities
- Children's activities

**FREE CONCERT 7:00 p.m. - 9:00 p.m.  
"Avenue Groove"**

For more information or to register: Call (860)826-3368  
or register online at [www.NBParksnRec.org](http://www.NBParksnRec.org)

**new britain**  
Sustaining our future

Presented by  
Mayor Erin E. Stewart  
City of New Britain  
Commission on  
Persons with  
Disabilities

Parks, Recreation and  
Community Services

## Disability Services

Whether you are a person with disabilities, or are concerned about the needs of a person with disabilities, you can rely on our office for assistance, information and support.

- Advocacy
- Care Coordination
- Counseling
- Crisis Intervention
- Education & Information
- Referral Service

A Disabilities Services Advocate is available for assistance in City Hall:  
 27 West Main Street, Rm. 301, M-F, 8:15 A.M. - 4:00 P.M.  
 Phone: (860)826-3368 or Fax/TDD: (860)826-3367  
 Email: [June.O'Leary@newbritainct.gov](mailto:June.O'Leary@newbritainct.gov)

# Community Gardens

**Interested in community gardens?  
Grow your own food!  
Meet new friends!  
See the benefits of gardening!**

Want to get involved?

Contact: Joey Listro with New Britain ROOTS  
at Phone: (860) 259-4290

Email: [joey@newbritainroots.org](mailto:joey@newbritainroots.org)

Web: [www.newbritainroots.org](http://www.newbritainroots.org)



## Youth Services

The Youth Advocate works with New Britain's youth that are in need of: Mentoring, Case Management, Referral for Mental Health Services, Community Service, Educational Advocacy, Crisis Services, Youth Leadership, Donations, and Marriage & Family Therapy.

The Youth Advocate also runs the City's Juvenile Review Board (JRB). The JRB is a community based program whose objective is to divert youth from the Juvenile Justice System by providing intervention services using the Restorative Justice Model to prevent further court involvement. This program is available to first time juvenile offenders residing in New Britain.

**Omar McDew: Youth Advocate**

(860) 826-3394/[omar.mcdew@newbritainct.gov](mailto:omar.mcdew@newbritainct.gov)

**Robb Ledder: Marriage and Family Therapist**

(860) 826-3371/[Robert.Ledder@newbritainct.gov](mailto:Robert.Ledder@newbritainct.gov)

## Robb Ledder, LMFT Licensed Marriage and Family Therapist

Free Counseling Services: Working with individuals, families, and agencies of New Britain for over 25 years.



- **Conflict Resolution**
- **Parenting Tips**
- **Student Achievement**

**For an appointment call: (860) 826-3371**

Office Hours: Wednesdays, 1:00 - 6:00 P.M.  
(other times as needed)

For more information contact: Community Services Division  
City Hall, 27 West Main Street, Room 301  
New Britain, CT 06051 - Tel: (860) 826-3366

## New Britain Recovers

### Our Mission:

Through community level interactions, New Britain Recovers connects individuals in a stigma free manner to resources with care, concern, and compassion.



### Our initiatives include:

#### Opioid Task Force

Communities across the nation are in the midst of an opioid overdose epidemic. More than 130 Americans die every day from an opioid overdose. Connecticut is among the top ten states for opioid overdose death rates, every city and town in our State has been affected.

In an effort to combat this growing public health crisis, Mayor Stewart has created the City of New Britain Opioid Response Task Force. This partnership is a multi-sector group of municipal agencies, community organizations, service providers and individuals that meet regularly to coordinate efforts and interventions in response to the opioid epidemic.

#### Building Hope Together

Building Hope Together is continuing and expanding under the New Britain Recovers umbrella as envisioned by Mayor Erin Stewart. By working in partnership with the City's Opioid Task Force and Youth Prevention initiatives, Building Hope Together will be better equipped to serve those seeking to avoid or overcome homelessness.

#### Local Prevention Council

New Britain's Local Prevention Council works to promote wellness through education, advocacy, collaboration and implementing strategies to ensure all youth are prepared to be positive contributing community members.



For more information visit:

**[nbrecovers.org](http://nbrecovers.org)**





MAYOR ERIN E. STEWART & THE NEW BRITAIN PARKS,  
RECREATION & COMMUNITY SERVICES DEPARTMENT PRESENTS:

# *Central Park Farmers Market*

Enjoy a wide selection of fresh produce, artisanal goods, food trucks, and family friendly activities! All are welcome, SNAP and WIC will be accepted.

*Wednesdays | 11AM to 2PM | June 1st-October 26th*

For more information, contact the New Britain Parks, Recreation, & Community Services Department at (860) 826-3367 or visit [www.nbparksnrec.org](http://www.nbparksnrec.org). Follow @nbparksnrec on Facebook for weekly updates on vendors, activities, food trucks and more!





MAYOR ERIN E. STEWART AND THE NEW BRITAIN PARKS, RECREATION & COMMUNITY SERVICES DEPARTMENT PRESENT:



# SUMMER MUSIC SERIES

JULY 06	NEW ENGLAND HEAD OVER HEELS POPULAR SHOW BAND
JULY 11	COAST GUARD BAND PREMIER ENSEMBLE
JULY 13	LEAF JUMPERS CLASSIC ROCK
JULY 18	FRITZ'S POLKA BAND MODERN-STYLE POLKA
JULY 20	AVENUE GROOVE R&B / FUNK / DANCE BAND *ADA WALK & ROLL
JULY 25	102D ARMY BAND NATIONAL GUARD BAND
JULY 27	TIMMY MAIA EXPERIENCE POPULAR SHOW BAND
AUG 01	STILL KICKIN' WITH THE BIG CITY HORNS R&B / BLUES / SOUL / FUNK
AUG 03	GOZA LATIN BAND LATIN DANCE MUSIC
AUG 08	GREAT HILL MOUNTAIN BAND COUNTRY / SOUTHERN ROCK
AUG 10	SPIRIT SHAKER CLASSIC HARD ROCK
AUG 15	MOTO CARRIBEAN VIBES CARIBBEAN BAND
AUG 17	NIGHTSHIFT CLASSIC ROCK
AUG 22	EP BOULEVARD ELVIS PRESLEY TRIBUTE
AUG 24	SOUTHERN VOICE COUNTRY
AUG 29	SHADED SOUL R&B / SOUL
AUG 31	LAST LICKS CLASSIC ROCK BAND

## MONDAY & WEDNESDAY NIGHTS

JULY 6 - AUGUST 31

# 7-9 PM

DARIUS MILLER MUSIC SHELL AT  
WALNUT HILL PARK

New Britain  
**PARKS,**  
**RECREATION**  
and Community Services Department



FREE  
LIVE  
MUSIC



# The New Osgood Park



**Coming Soon!**

[nbparksnrec.org](http://nbparksnrec.org)

(860) 826-3360