

**POCATELLO/CHUBBUCK
SCHOOL DISTRICT NO. 25
Bannock County**

**Administration Office
3115 Pole Line Road
Pocatello, Idaho**

SPECIFICATIONS FOR

2019 HVAC EQUIPMENT REPLACEMENT AT:

Highland High School – 1800 Bench Rd

Project #1- Replacement of sixteen (16) existing roof top gas package units

Project #2- Replacement of four (4) roof top gas package units, relocation and conversion of two (2) electric package units to gas NOTE: Please refer to the attached drawings and requirements from Engineered Systems Associates, Inc. (ESA).

Irving Middle School – 911 N. Grant Ave

Project #3- Replacement of twelve (12) existing roof top gas package units.

Syringa Elementary School – 388 E. Griffith

Project #4- Replacement of fifteen (15) existing roof top gas package units.

Lincoln Center 330 Oakwood Dr

Project #5- Replacement of five (5) existing roof top gas package units.

BIDS WITH CONDITIONS WILL NOT BE ACCEPTED

BID OPENING

**March 14, 2019
10:00 A.M.**

**POCATELLO/CHUBBUCK
SCHOOL DISTRICT NO. 25
Bannock County**

INVITATION TO BID

**2019 HVAC EQUIPMENT REPLACEMENT AT
VARIOUS LOCATIONS**

Sealed bids will be received by a Representative of the Board of Trustees of School District No.25, Bannock County, Idaho at 3115 Pole Line Road, Pocatello, Idaho, 83201, until March 1, 2019 at 9:30 AM for Replacement of HVAC Equipment at various locations.

A mandatory pre-bid conference and walk-thru to review projects will be held at 1:00 PM on February 21, 2019 at the District Maintenance Shop, 185 E. Maple, Pocatello, Idaho.

Specifications or additional details, (including bid forms), may be secured at 3115 Pole Line Road, Pocatello, Idaho, 83201. All bids must be on the forms furnished, all blank spaces filled in, and signed with the name and address of the Bidder. No unqualified bids will be read.

Each bid shall be accompanied by a certified check, cashier's check, or a bidder's bond, (executed by a qualified surety company with the power to do business in the State of Idaho) in the sum of not less than five percent, (5%) of the total bid, made payable to School District No. 25, Bannock County, Pocatello, Idaho. This surety shall be forfeited by the bidder in the event of failure to enter into a contract. Personal or company checks will not be accepted. Compliance with Idaho Public Works Law is required.

The Board of Trustees reserves the right to reject any/or all bids or to waive any informalities, or to accept the bid or bids deemed best for School District No. 25, Bannock County, Pocatello, Idaho.

Rena Johnson, Clerk
School District No. 25

To be published on the dates of:

February 12, 2019

February 19, 2019

IDAHO STATE JOURNAL

INSTRUCTIONS TO BIDDERS

BIDS:

Sealed "BIDS" will be received on or before the time and date set forth under "INVITATION TO BID".

The owner reserves the right to accept or reject any part or all bids.

Bidders submitting a "Bid" on this work will be required to figure and furnish everything as called for by these specifications and the requirements of the "Bid" sheet.

All bids shall be in a sealed envelope addressed to the Board of Trustees of School District No. 25, 3115 Pole Line Road, Pocatello, Idaho. The following shall be written on the exterior of the envelope:

“BIDS FOR REPLACEMENT OF HVAC EQUIPMENT AT VARIOUS LOCATIONS
TO BE OPENED ON MARCH 14, 2019 AT 10:00 AM”

Bids not delivered by contractors at time of bid opening must be received in mail no later than 4:00 PM on March 13, 2019, the day before the bid opening.

EXAMINATION OF THE SITE AND DOCUMENTS:

Refer all questions to Brian Glenn, Energy Manager, (208) 233-2604. Contact with other district staff, Board of Trustees, or Administration, will be by written permission only.

A mandatory pre-bid conference and walk-thru to review projects will be held at 1:00 PM on February 21, 2019 at the District Maintenance Shop, 185 E. Maple, Pocatello, Idaho.

Before submitting a proposal the bidder shall:

1. Carefully examine the specifications.
2. Visit the worksite.
3. Be fully informed of existing conditions and limitations.
4. Include in the bid, sums sufficient to cover all items required by the contract, and shall rely entirely upon his own examinations in making his proposal.

INTERPRETATIONS:

Should a bidder find discrepancies in or omissions from the specifications, or be in doubt as to their meaning, he should at once notify the Owner, who will send written instructions or addenda to all bidders. The owner will not be responsible for oral interpretations. Questions received less than 48 hours before time for bid opening cannot be answered. All addenda issued during the time of bidding will be incorporated in the contract.

BID GUARANTEE:

As a guarantee that, if awarded the contract, the bidder will execute same and furnish bond. Each bid will be accompanied by a Certified check, Cashier's Check, or Bid Bond for not less than five percent (5%) of the base bid payable to the Owner. NO PERSONAL OR COMPANY CHECKS WILL BE ACCEPTED.

OBJECTIONS:

Written objections to specifications or bid procedures must be received by the clerk, secretary, or other authorized official of the District at least one (1) business day before the date and time upon which bids are scheduled to be received, per Idaho Code Section 68-2806(c).

EVIDENCE OF QUALIFICATIONS:

Upon request of the owner, a bidder whose bid is under consideration for award of the contract shall submit, promptly, satisfactory evidence of his financial resources, his experiences, and the organization and equipment he has available for performance of the contract.

LAWS AND ORDINANCES:

The contractor hereby binds himself to protect and save harmless the owner from all damages arising from the violation of any and all Federal, State, County, City, and all other laws, rules, regulations, in the performance of the terms of the contract.

HOLD HARMLESS AGREEMENTS:

The District expects your work to conform to professional standards. The contractor is expected to hold the District harmless for all damages or claims arising out of the work performed by the contractor. The District will not agree to hold the contractor harmless for damages or claims.

EQUIPMENT:

The contractor shall provide all labor, materials, tools, and equipment, etc. necessary for the complete and substantial execution of everything described in the specifications.

STORAGE OF MATERIALS:

The contractor shall make arrangement and coordinate with the Maintenance Department for storage of materials. Any damages of life or property caused by storage of materials on the above indicated place shall be paid for by the contractor, who shall hold the owner harmless for any damages concerning the same.

SUPERVISION:

The supervision of this work will be done by the Maintenance Department.

EMPLOYMENT OF RESIDENTS OF IDAHO:

In compliance with Idaho Laws, Section 44-1001 and 44-1002 Idaho Code, the contractor must employ ninety-five percent 95% bona fide Idaho residents as employees on any such contracts except where under such contracts fifty (50) or less persons are employed the contractor may employ ten percent (10%) nonresidents, provided however, in all cases such employers must give preference to the employment of bona fide Idaho residents in the performance of such work.

CONTRACTOR'S LICENSE:

In compliance with Idaho Laws, the contractor must be registered with the State of Idaho, and hold the required Public Works Contractor's License before obtaining the contract documents and before submitting a bid for this work.

INSURANCE:

All contractors who provide goods or services to the District are required to provide the District with certificates of insurance for General Liability, Auto Liability, Workers Compensation, and Professional Liability if applicable.

The General Liability and/or Professional Liability certificate must name the District as an additional insured under the contractor’s policy. Certificates are to be provided to the District prior to any work commencing on District property. This would include the placement of any equipment or materials at the work site

Minimum Insurance Limits

General Liability	\$1,000,000 per occurrence \$1,000,000 products and completed operations \$1,000,000 annual aggregate
Auto Liability	\$1,000,000 per occurrence
Worker’ Compensation	Statutory
Professional Liability	\$1,000,000 per occurrence \$1,000,000 annual aggregate

OWNER/CONTRACTOR AGREEMENT:

The Agreement for the work will be written on a District provided Form of Agreement between Owner and Contractor where the basis of payment is a stipulated sum.

PERFORMANCE BOND:

The successful bidder will be required to furnish a 100% performance bond when entering into the contract work, per Idaho Code Section 54-1926, "...conditioned upon the faithful performance of the contract in accordance with the plans, specifications and conditions thereof."

PAYMENT BOND:

The successful bidder will be required to furnish a 100% payment bond when entering into the contract work, per Idaho Code Section 54-1926, "solely for the protection of persons supplying labor or materials, or renting, leasing, or otherwise supplying equipment to the contractor or his subcontractors in the prosecution of the work provided for in such contract."

5% RETAINAGE:

The Owner will retain 5% of the Contractor's earned sum to ensure faithful performance. This 5% will be released to the Contractor upon receipt of approval from State of Idaho.

LIQUIDATED DAMAGES:

Contractor shall be required to pay Owner as liquidated damages the sum of \$200 for each day, after the scheduled completion date, that the project is unfinished.

CHANGES IN THE WORK:

The owner, without invalidating the contract, may order extra work or make changes by altering, adding to, or deducting from the work; the contract sum being adjusted accordingly. All such work shall be executed under the conditions of the original contract, except that any claim for extension of the time caused thereby shall be adjusted at the time of ordering such change.

The total allowance for combined overhead and profit for changes shall be included in the total cost to the owner and shall be based on the following schedule:

- a) For the Contractor, 10% over cost;
- b) For the Sub-Contractor, 15% over cost to be divided 10% for Sub-Contractor and 5% for Contractor; and
- c) For any Sub-Subcontractor, 15% over cost to be divided 5% for Contractor, 5% for Sub-Contractor, and 5% for Sub-Subcontractor.

FORM WH5:

Per Idaho Code Section 54-1904A, within thirty (30) days of award of bid, the contractor shall file with the State Tax Commission a form WH-5, Public Works Contract Report.

INSPECTION OF WORK:

The representative of the owner shall at all times have access to the work wherever it is in preparation or progress and the contractor shall provide facilities for such access and for inspection.

WARRANTY:

Manufacturer shall warrant products under normal use and service to be free from defects in materials and workmanship for a period of one year from date of delivery.

Warranty shall cover repair or replacement of such parts determined defective upon inspection. Warranty does not cover any product or part of a product subject to accident, negligence, alteration, abuse or misuse. Warranty does not cover any accessories or parts not supplied by the manufacturer.

Warranty shall not cover any labor expended or materials used to repair any equipment without manufacturer's prior written authorization.

CLEAN UP:

The contractor shall at all times keep the premises free from accumulations of waste material or rubbish caused by his employees or work, and at the completion of the work he shall remove all his rubbish from and about the building and all tools and surplus materials and shall leave his work clean. In case of dispute, the owner shall remove the rubbish and surplus materials and charge the cost to the contractor.

IDAHO EMPLOYER ALCOHOL AND DRUG-FREE WORKPLACE ACT: Include with your bid sheet a contractor's affidavit pursuant to Idaho Code Section 72-1717.

BIDDER CERTIFICATION FORM: All bidders must complete and submit the Bidder Certification Form included with this bid request.

PAYMENT:

Prices must remain firm as quoted by supplier until quantity awarded is received. Application for payment dated on or before the 25th of the month, shall be paid by the 15th of the following month. Application for payment dated after the 25th of the month, shall be paid within 30 days.

Delivery may be accepted any time, however, payment for the 2019-2020 fiscal year cannot be made until after July 3, 2019 when those funds have been released.

BID:

The following universal specifications are being used as a guideline. Alternate bids for equal equipment will be considered. Substitutions or major alternations must be indicated upon the proposal sheet at the time of the bid submission. Bids must be based upon conditions at the site and these specifications. Bids shall be submitted in accordance with the requirements shown on the bid form.

BID EVALUATION CRITERIA:

Contractor selection on this project will be evaluated based on the following:

- 1) Price
- 2) Contractor reputation for quality of work with current customers or past performance with District 25. (please list all jobs/contracts greater than \$10,000 performed in the past two years if contractor has not performed one for the District in past 5 years)
- 3) Vendor ability to best match the listed criteria as specified.

DELIVERY AND START OF WORK:

The time-frame for the replacement of HVAC Equipment to be completed is between June 3, 2019 and July 31, 2019.

REQUIREMENT FOR REPLACEMENT OF HVAC EQUIPMENT AT VARIOUS BUILDINGS

Project #1 - HIGHLAND HIGH SCHOOL D BUILDING

This work is to replace sixteen (16 ea) rooftop units with new rooftop units sized to meet load conditions as shown on the attached plan and shall include the following:

- A. Removal and disposal of sixteen (16 ea.) existing roof top gas package units.
- B. Removal of DDC components for reuse in new equipment.
- C. Installation of fourteen (14 ea.) rooftop gas package units with economizers and transitioning curbs.
- D. Installation of two (2 ea) rooftop units to be reconnected to existing horizontal ductwork with economizers.
- E. Reconnection of DDC control wiring to these systems.
- F. Reconnection to existing high voltage electrical.
- G. Reconnection to existing gas lines.
- H. Cost for all permits and inspections.

BID OPTIONS:

- 1(a). Pricing for standard equipment. Equipment to be Lennox model# KGA series or equivalent.
- 1(b). Pricing to upgrade to higher efficiency equipment with multi-stage heating, cooling, and variable speed ECM blowers. Equipment to be Lennox model# LGH series or equivalent.

Project #2 -HIGHLAND HIGH SCHOOL D BUILDING

This work is to replace four (4 ea) rooftop gas package units and relocated and convert (2 ea) electric package units to gas. Design will be done by engineer. Installation to include the following:

- A. Removal and disposal of four (4 ea) existing roof top gas package units.
- B. Removal and disposal of two (2 ea) existing electric package units.
- C. Removal of DDC components for reuse in new equipment.
- D. Installation of two (2ea.) rooftop gas package units with economizers and transitioning curbs.
- E. Installation of two (2ea.) rooftop gas package units with economizers to be reconnected to existing horizontal ductwork.
- F. Relocation and installation of two (2ea) gas package rooftop units with economizers to be reconnected to existing horizontal duct work
- G. Reconnection of DDC control wiring to these systems.
- H. Reconnection to existing high voltage electrical.
- I. Reconnection to existing gas lines.
- J. Cost for all permits and inspections

BID OPTIONS:

- 1(a). Pricing for standard equipment. Equipment to be Lennox model# KGA series or equivalent.
- 1(b). Pricing to upgrade to higher efficiency equipment with multi-stage heating, cooling, and variable speed ECM blowers. Equipment to be Lennox model# LGH series or equivalent.

Project #3 - Irving Middle School

This work is to replace twelve (12ea) new rooftop gas package units sized to meet load conditions and to be attached to existing duct work and shall include the following:

- A. Removal and disposal of twelve (12 ea.) existing roof top gas package units.
- B. Removal of DDC components for reuse in new equipment.
- C. Installation of eleven (11ea.) rooftop gas package units with economizers and transitioning curbs.
- D. Installation of one (1 ea) rooftop unit to be reconnected to existing horizontal ductwork with economizer.
- E. Reconnection of DDC control wiring to these systems.
- F. Reconnection to existing high voltage electrical.
- G. Reconnection to existing gas lines.
- H. Cost for all permits and inspections

BID OPTIONS:

- 1(a). Pricing for standard equipment. Equipment to be Lennox model# KGA series or equivalent.
- 1(b). Pricing to upgrade to higher efficiency equipment with multi-stage heating, cooling, and variable speed ECM blowers. Equipment to be Lennox model# LGH series or equivalent.

Project #4 - Syringa Elementary School

This work is to install fifteen (15 ea) new rooftop gas package units sized to meet load conditions and to be attached to existing duct work and shall include the following:

- A. Removal and disposal of fifteen (15ea.) existing roof top gas package units.
- B. Removal of DDC components for reuse in new equipment.
- C. Installation of fifteen (15ea.) rooftop gas package units with economizers and transitioning curbs.
- D. Reconnection of DDC control wiring to these systems.
- E. Reconnection to existing high voltage electrical.
- F. Reconnection to existing gas lines.
- G. Cost for all permits and inspections

BID OPTIONS:

- 1(a). Pricing for standard equipment. Equipment to be Lennox model# KGA series or equivalent.
- 1(b). Pricing to upgrade to higher efficiency equipment with multi-stage heating, cooling, and variable speed ECM blowers. Equipment to be Lennox model# LGH series or equivalent.

Project #5 - Lincoln Center

This work is to install five (5 ea) new rooftop gas package units sized to meet load conditions and to be attached to existing duct work and shall include the following:

- A. Removal and disposal of five (5 ea.) existing roof top gas package units.
- B. Removal of DDC components for reuse in new equipment.
- C. Installation of five (5ea.) rooftop gas package units with economizers and transitioning curbs.
- D. Reconnection of DDC control wiring to these systems.
- E. Reconnection to existing high voltage electrical.
- F. Reconnection to existing gas lines.
- G. Cost for all permits and inspections

BID OPTIONS:

- 1(a). Pricing for standard equipment. Equipment to be Lennox model# KGA series or equivalent.
- 1(b). Pricing to upgrade to higher efficiency equipment with multi-stage heating, cooling, and variable speed ECM blowers. Equipment to be Lennox model# LGH series or equivalent.

GENERAL NOTES THAT APPLY TO ALL OF THE ABOVE BID ITEMS:

Contractor will submit equipment, materials and/or design submittals to the District for approval prior to ordering equipment.

New installation shall meet all Federal, state and local code requirements. The contractor will be responsible for obtaining any required permits and/or jurisdictional approvals. The contractor is responsible for providing any and all drawings and specifications that are required by governmental agencies. The contractor will be required to provide proof of final approval from all governmental agencies having jurisdiction over this work once the installation is complete.

Contractor is responsible for verifying existing electrical loads and notifying the District if electrical service modifications might be required. The Contractor is responsible for making all electrical connections necessary unless directed differently in individual item descriptions.

The Contractor is responsible for providing any changes or modifications required to the building (drywall, painting, roofing, insulation, etc.) so as to provide a complete, finished product.

Contractor will provide industry standard warrantee for this application.

Contractor will provide operation and maintenance training of O&M personnel once the installation is complete. Complete as-built drawings, equipment drawings and operation & maintenance manuals are to be turned into the District Maintenance Department.

Contractor is responsible to run heat on all units to burn off process oils from heat exchangers.

Contractor to verify phasing on fans and compressors and verify economizer operation.

Contractor to do the first filter change after operation of units.

Contractor to reinstall any bird proofing that is removed during installation of units.

EXISTING EQUIPMENT LIST

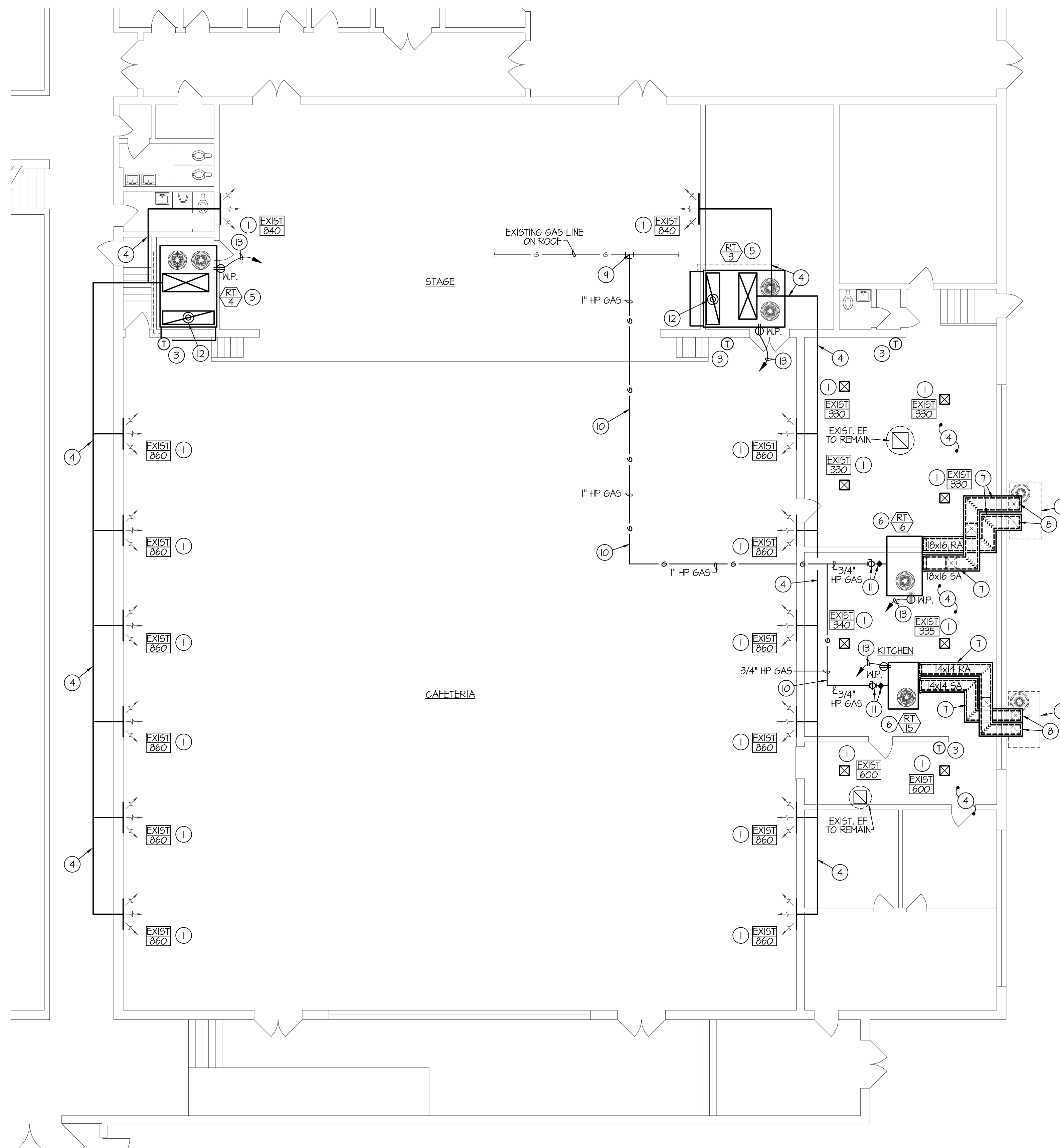
Project #1 – Highland High School, Bldg D

Equipment No.	Description	Manufacturer	Model	Serial No.	Notes
HID-RTU-001	ROOF TOP UNIT 1	TRANE	YCC024F1LOBC	L231W4P2H	
HID-RTU-005	ROOF TOP UNIT 5	TRANE	YCD037C4HABE	L25101095	
HID-RTU-006	ROOF TOP UNIT 6	TRANE	YCD037C4HABE	L25102045D	
HID-RTU-007	ROOF TOP UNIT 7	TRANE	YCD037C4HABE	L24104049D	
HID-RTU-008	ROOF TOP UNIT 8	TRANE	YCDO49C4HABE	L24104072D	
HID-RTU-009	ROOF TOP UNIT 9	TRANE	YCC024F1LOBC	L231YX02H	
HID-RTU-010	ROOF TOP UNIT 11	TRANE	YCD037C4HABE	L24104051D	
HID-RTU-011	ROOF TOP UNIT 12	TRANE	YCD037C4HABE	L2510110CD	
HID-RTU-012	ROOF TOP UNIT 13	TRANE	YCD037C4HABE	L25101096D	
HID-RTU-014	ROOF TOP UNIT 10	TRANE	YCD049C4HABE	L24104070D	
HID-RTU-017	ROOF TOP UNIT	TRANE	YCC036F4H0BF	N3112531H	
HID-RTU-018	ROOF TOP UNIT	TRANE	YCC036F4H0BF	N2724Y21H	Horizontal Discharge
HID-RTU-019	ROOF TOP UNIT	TRANE	YCC036F4H0BF	N3210NWIH	Horizontal Discharge
HID-RTU-020	ROOF TOP UNIT	TRANE	YCC018F1L0BH	2173SDN2H	
HID-RTU-021	ROOF TOP UNIT	TRANE	YCC018F1L0BH	217248U2H	
HID-RTU-024	ROOF TOP UNIT	TRANE	YHC036A3RHA 10010100000300	320100919L	

Project #2 Highland High School, Bldg D

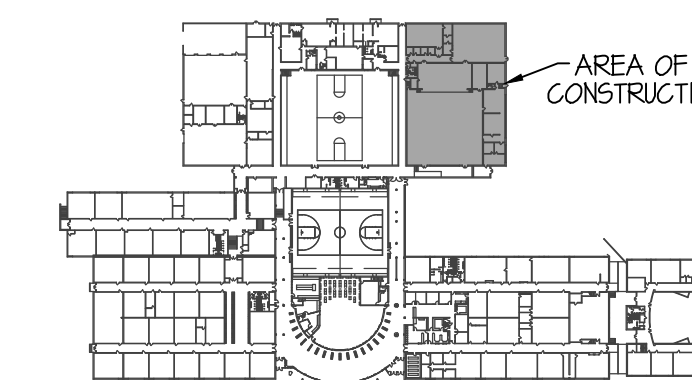
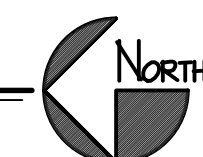
Equipment No.	Description	Manufacturer	Model	Serial No.	Notes
HID-RTU-002	ROOF TOP UNIT 2	TRANE	YCH241B4HODD	L24101447D	South Gym
HID-RTU-003	ROOF TOP UNIT 3	TRANE	YCD181B4HADD	L23104894D	South Cafeteria
HID-RTU-004	ROOF TOP UNIT 4	TRANE	YCD181B4HADD	L23104893D	North Cafeteria
HID-RTU-013	ROOF TOP UNIT 14	TRANE	YCH241B4HODD	L24101448D	North Gym
HID-RTU-015	ROOF TOP UNIT	HEIL	PAA036NILA	L932398288	Kitchen Electric Heat, relocate and convert to gas.
HID-RTU-016	ROOF TOP UNIT	HEIL	PAA060NILA	L932260257	Kitchen Electric Heat, relocate and convert to gas.

NOTE: Project #2: Please refer to the attached drawings and requirements from Engineered Systems Associates, Inc. (ESA)



**KITCHEN & CAFETERIA AREA
MECH. / ELEC. FLOOR PLAN**

SCALE: 1/8" = 1'-0"



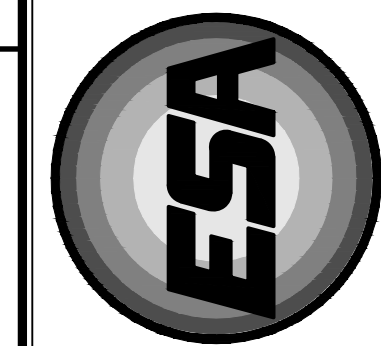
KEY PLAN
NO SCALE

PLAN NOTES:

- 1 EXISTING CEILING DIFFUSER / SIDEWALL SUPPLY REGISTER TO REMAIN. BALANCE TO CFM SHOWN.
- 2 REMOVE EXISTING ROOFTOP UNIT AND METAL SUPPORTS LOCATED ON SIDEWALL OF BUILDING. REMOVE EXISTING ELEC. DISCONNECT AND CONDUIT BACK INTO BUILDING. PULL EXISTING ELEC. WIRING & CONTROL WIRING BACK INTO BUILDING AND RELOCATE TO NEW ROOFTOP UNIT LOCATION. SEE NOTES BELOW.
- 3 EXISTING THERMOSTAT TO REMAIN. RECONNECTION TO NEW ROOFTOP UNIT BY OWNER.
- 4 EXISTING SUPPLY AIR DUCTWORK TO REMAIN.
- 5 REMOVE EXISTING ROOFTOP UNIT AND REPLACE WITH NEW UNIT. INSTALL NEW UNIT ON EXISTING ROOFCURB. CONTRACTOR TO PROVIDE ADAPT-A-CURB MOUNT AS REQUIRED. RECONNECT NEW UNIT TO EXISTING GAS PIPING, AND ELECTRICAL.
- 6 INSTALL NEW ROOFTOP UNIT ON NEW ROOF CURB AND FLASH AND SEAL INTO EXISTING ROOF. SEAL WEATHERTIGHT. CONNECT EXISTING POWER TO NEW ROOFTOP UNIT THRU BOTTOM OF CURB. MAINTAIN 10'-0" FROM ROOF EDGE TO UNIT AND 10'-0" FROM ANY ROOF VENTS OR EXHAUST.
- 7 SUPPLY AND RETURN DUCTWORK RUN ON ROOF TO HAVE 1" INTERNAL ACOUSTICAL DUCT LINER, 1-1/2" EXTERNAL DUCT WRAP AND SHEET METAL COVER OVER EXTERNAL WRAP. SEE DETAIL ON SHEET ME-3.
- 8 DROP DUCTWORK DOWN EXPOSED ON EXTERIOR OF BUILDING AND CONNECT TO EXISTING SUPPLY AND RETURN DUCTWORK. SEAL ALL AROUND DUCT PENETRATION THRU WALL WEATHERTIGHT.
- 9 CONNECT NEW 1" HIGH PRESSURE GAS LINE TO EXISTING 1" OR LARGER HIGH PRESSURE GAS LINE LOCATED ON ROOF.
- 10 INSTALL NEW GAS PIPING ON ROOF ON ERICO PIPE PIER SUPPORTS OR APPROVED EQUAL AT 10'-0" ON CENTER.
- 11 INSTALL GAS REGULATOR ON 3/4" HIGH PRESSURE GAS LINE SERVING NEW GAS FIRED ROOFTOP UNIT. SIZE REGULATOR FOR BTU LOAD OF ACTUAL UNIT SUPPLIED. FIELD VERIFY EXISTING GAS LINE PRESSURE AND SUPPLY REGULATOR TO MATCH. CONNECT 3/4" (OZ. PRESSURE) GAS LINE TO UNIT WITH SHUT-OFF VALVE, FLEXIBLE CONNECTION AND DIRT LEG AS SHOWN ON DETAIL ON SHEET ME-3.
- 12 INSTALL UL RATED SMOKE DETECTOR IN RETURN AIR DUCT FOR EMERGENCY FAN SHUT-DOWN AND INTERLOCK WITH UNIT.
- 13 RUN SEPARATE 120 VOLT 20A CIRCUIT (2) #12 WITH GROUND IN 3/4" CONDUIT TO EACH ROOFTOP UNIT. CONNECT TO NEAREST 120 VOLT POWER.

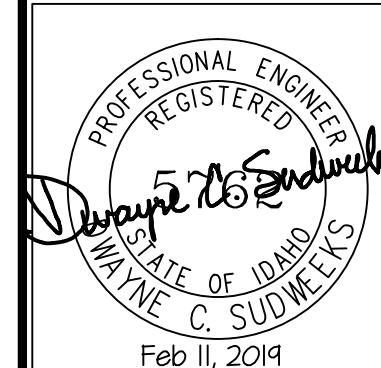
GENERAL NOTES:

- A- THE CONTRACTOR SHALL CHECK AND VERIFY ALL DIMENSIONS AND CONNECTIONS ON THE JOB SITE. ALL WORK SHALL BE EXECUTED FROM MEASUREMENTS TAKEN AT THE SITE.
- B- THE MECHANICAL CONTRACTOR SHALL BE RESPONSIBLE TO INSURE PROPER CODE CLEARANCES FOR ELECTRICAL AND MECHANICAL ACCESS WHEN INSTALLING ANY EQUIPMENT SUPPLIED BY THE MECHANICAL CONTRACTOR.
- C- IT IS CRITICAL THAT THIS CONTRACTOR COORDINATE EQUIPMENT LOCATIONS WITH PIPING, DUCTWORK, ELECTRICAL CONDUIT AND BUILDING STRUCTURE TO INSURE CODE COMPLIANCE.
- D- CEILING DIFFUSERS ARE SHOWN IN APPROXIMATE LOCATIONS. REFER TO LIGHTING PLANS AND REFLECTED CEILING PLAN FOR EXACT LOCATIONS.
- E- DUCT DIMENSIONS CALLED OUT ON DRAWINGS ARE INSIDE FREE AREA DIMENSIONS. ACOUSTICAL DUCT LINER ARE TO BE ADDED TO OVERALL MEASUREMENTS.
- F- ALL DUCTWORK AND PIPING WHICH PASSES THRU FIRE RATED WALLS TO BE FIRE STOPPED WITH APPROVED FOAM OR SEALANT. REFER TO SPECIFICATIONS FOR APPROVED MANUFACTURERS.



**Engineered Systems Associates
Mechanical Engineers**
Dwayne Sudweeks
1355 East Center - Pocatello, Idaho 83201
Phone: (208) 233-0501 Fax: (208) 233-0529 email: esa@engsystems.com

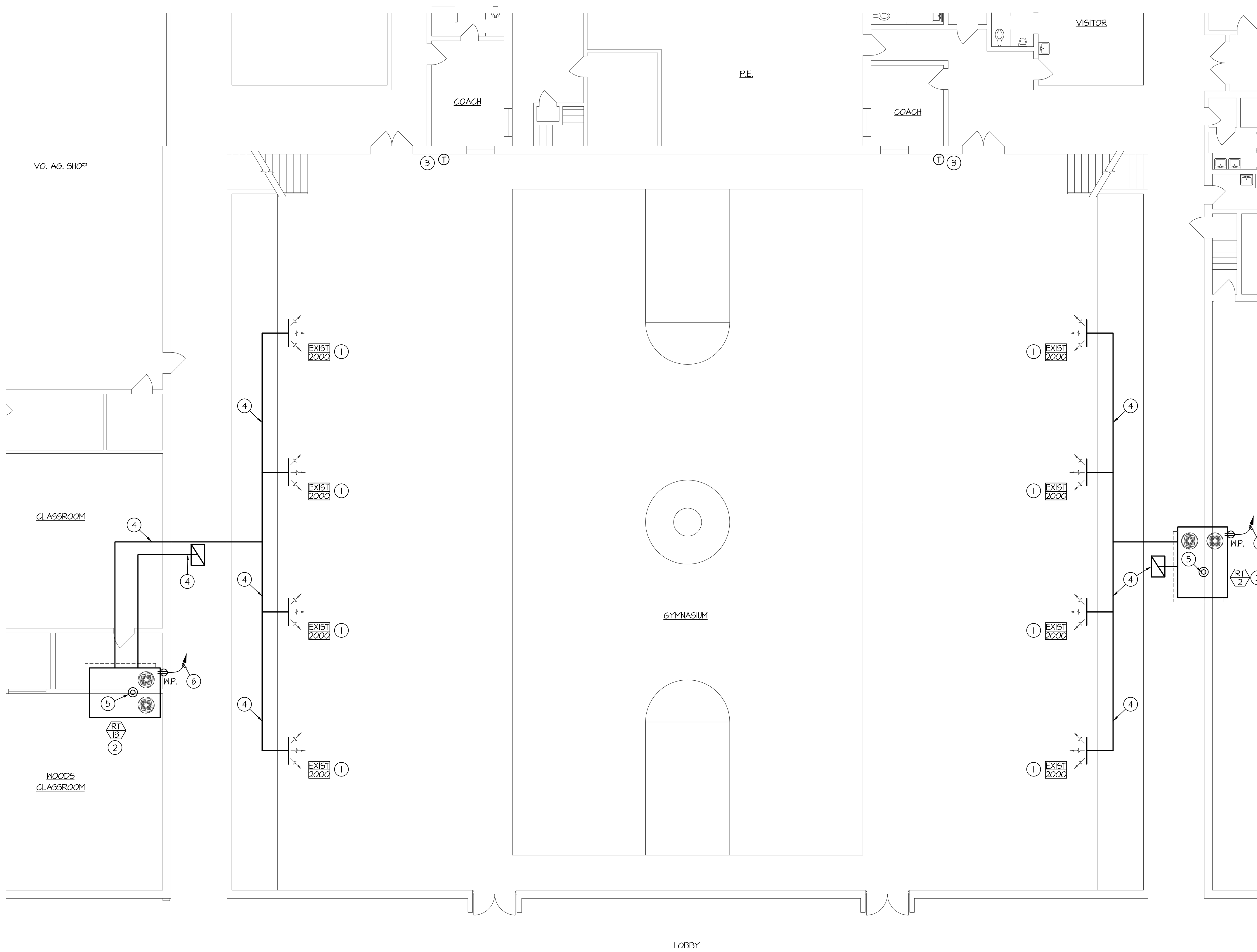
PROJECT: **ROOFTOP UNIT REPLACEMENT FOR:
HIGHLAND HIGH SCHOOL
POCATELLO SCHOOL DISTRICT #25 POCATELLO, IDAHO**
SHEET TITLE: **KITCHEN & CAFETERIA MECH. / ELEC. PLAN**



DRWN. BY: SR	CHK. BY: DCS
JOB NO. 180526	DATE: FEB. 2014

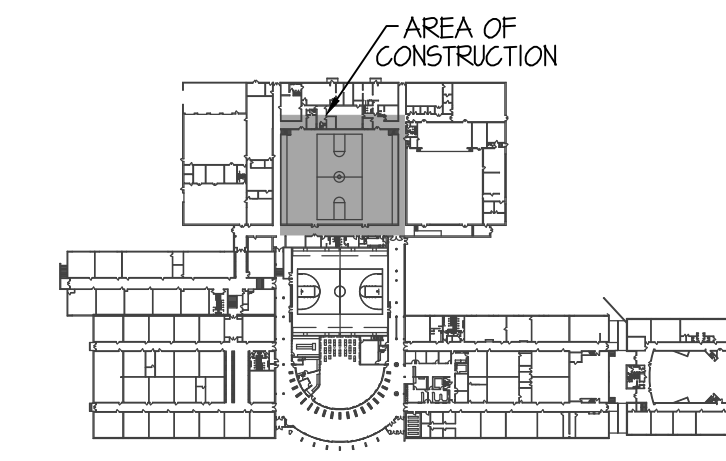
SHEET:
ME-1
OF: **THREE**

F:\180506 HIGHLAND HS RTU REPLACEMENT\180506 ME-2.dwg Feb 11, 2014 - 2:21pm



GYMNASIUM MECH. / ELEC. FLOOR PLAN

SCALE: 1/8" = 1'-0"



KEY PLAN
NO SCALE

PLAN NOTES:

- 1 EXISTING SIDEMALL SUPPLY REGISTER TO REMAIN. BALANCE TO CFM SHOWN.
- 2 REMOVE EXISTING ROOFTOP UNIT AND REPLACE WITH NEW UNIT. CONNECT NEW UNIT TO EXISTING DUCTWORK, GAS PIPING, ELEC. AND CONTROLS. MODIFY EXISTING METAL RAILS ON ROOF AS REQUIRED FOR NEW ROOFTOP UNIT.
- 3 EXISTING THERMOSTAT TO REMAIN. RECONNECTION TO NEW ROOFTOP UNIT BY OWNER.
- 4 EXISTING SUPPLY & RETURN AIR DUCTWORK TO REMAIN.
- 5 INSTALL UL RATED SMOKE DETECTOR IN RETURN AIR DUCT FOR EMERGENCY FAN SHUT-DOWN AND INTERLOCK WITH UNIT.
- 6 RUN SEPARATE 120 VOLT 20A CIRCUIT (2) #12 WITH GROUND IN 3/4" CONDUIT TO EACH ROOFTOP UNIT. CONNECT TO NEAREST 120 VOLT POWER.

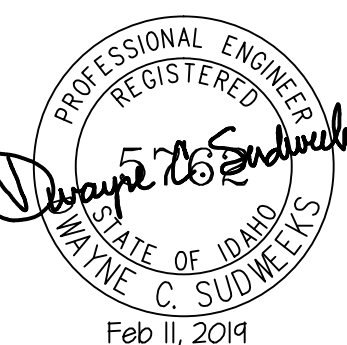
GENERAL NOTES:

- A- THE CONTRACTOR SHALL CHECK AND VERIFY ALL DIMENSIONS AND CONNECTIONS ON THE JOB SITE. ALL WORK SHALL BE EXECUTED FROM MEASUREMENTS TAKEN AT THE SITE.
- B- THE MECHANICAL CONTRACTOR SHALL BE RESPONSIBLE TO INSURE PROPER CODE CLEARANCES FOR ELECTRICAL AND MECHANICAL ACCESS WHEN INSTALLING ANY EQUIPMENT SUPPLIED BY THE MECHANICAL CONTRACTOR.
- C- IT IS CRITICAL THAT THIS CONTRACTOR COORDINATE EQUIPMENT LOCATIONS WITH PIPING, DUCTWORK, ELECTRICAL CONDUIT AND BUILDING STRUCTURE TO INSURE CODE COMPLIANCE.
- D- CEILING DIFFUSERS ARE SHOWN IN APPROXIMATE LOCATIONS. REFER TO LIGHTING PLANS AND REFLECTED CEILING PLAN FOR EXACT LOCATIONS.
- E- DUCT DIMENSIONS CALLED OUT ON DRAWINGS ARE INSIDE FREE AREA DIMENSIONS. ACOUSTICAL DUCT LINER ARE TO BE ADDED TO OVERALL MEASUREMENTS.
- F- ALL DUCTWORK AND PIPING WHICH PASSES THRU FIRE RATED WALLS TO BE FIRE STOPPED WITH APPROVED FOAM OR SEALANT. REFER TO SPECIFICATIONS FOR APPROVED MANUFACTURES.



Engineered Systems Associates
Mechanical Engineers
Dwayne Sudweeks
1355 East Center - Pocatello, Idaho 83201
Phone: (208) 233-0501 Fax: (208) 233-0529 email: esa@engsystems.com

PROJECT: **ROOFTOP UNIT REPLACEMENT FOR: HIGHLAND HIGH SCHOOL**
POCATELLO SCHOOL DISTRICT #25 POCATELLO, IDAHO
SHEET TITLE: **GYMNASIUM MECH. / ELEC. PLAN**



DRWN. BY: SR	CHK. BY: DCS
JOB NO. 180506	DATE: FEB. 2014

SHEET: **ME-2**
OF: **THREE**

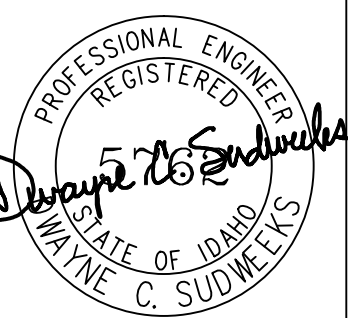


Engineered Systems Associates
Mechanical Engineers

Dwayne Sudweeks
 1355 East Center - Pocatello, Idaho 83201
 Phone: (208) 233-0501 Fax: (208) 233-0529 email: esa@engsystems.com

PROJECT: ROOFTOP UNIT REPLACEMENT FOR:
HIGHLAND HIGH SCHOOL
 POCATELLO SCHOOL DISTRICT #25 POCATELLO, IDAHO

SHEET TITLE: MECH. / ELEC. SCHEDULES & DETAILS



PROFESSIONAL ENGINEER
 REGISTERED
 Dwayne C. Sudweeks
 STATE OF IDAHO
 NO. 10476
 EXPIRES 12/31/2019

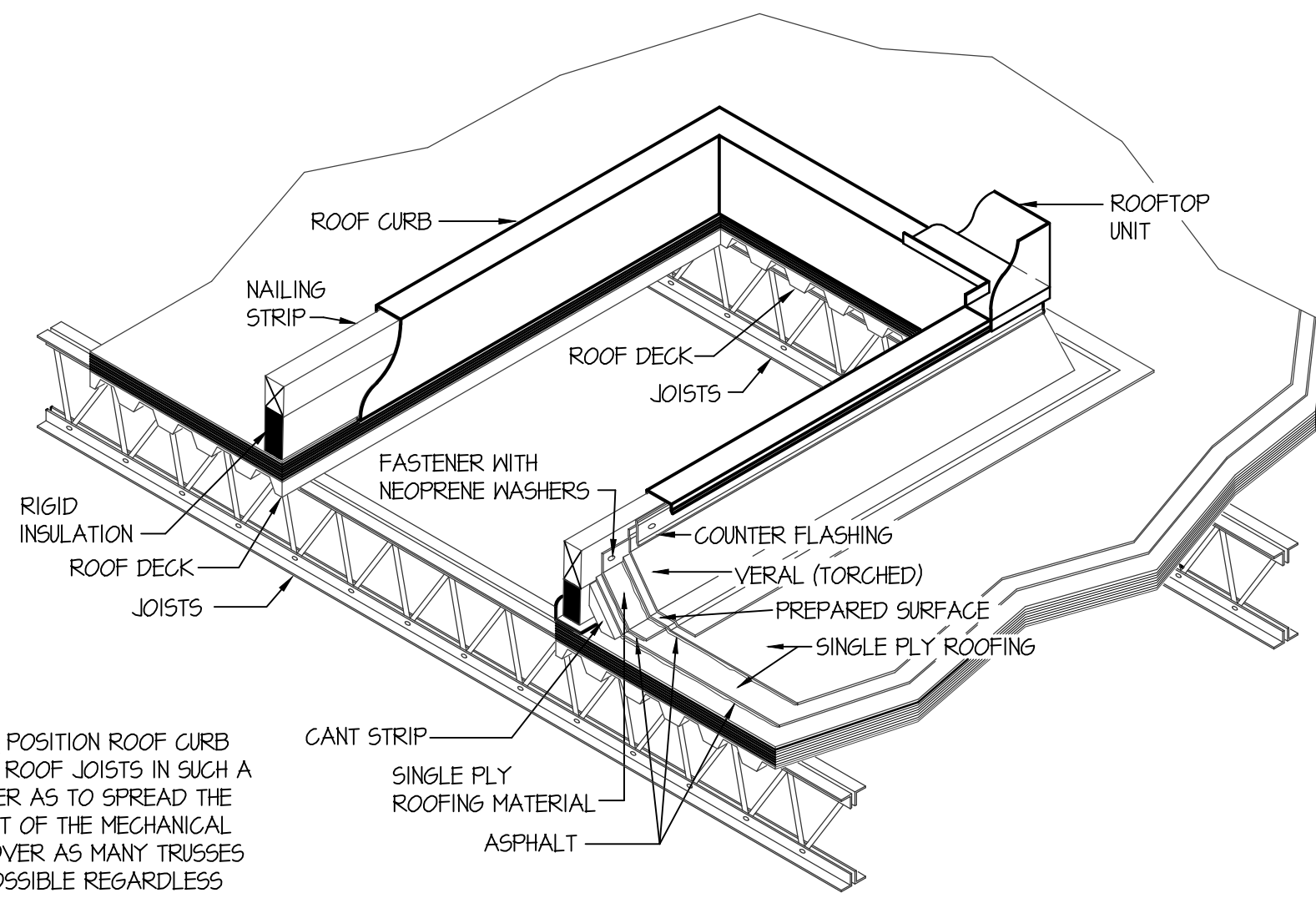
DRWN. BY: SR
 OKD. BY: DCS
 JOB NO. 18058
 DATE: FEB. 2019

SHEET: ME-3
 OF: THREE

ROOF TOP HEATING & AIR CONDITIONING UNIT SCHEDULE

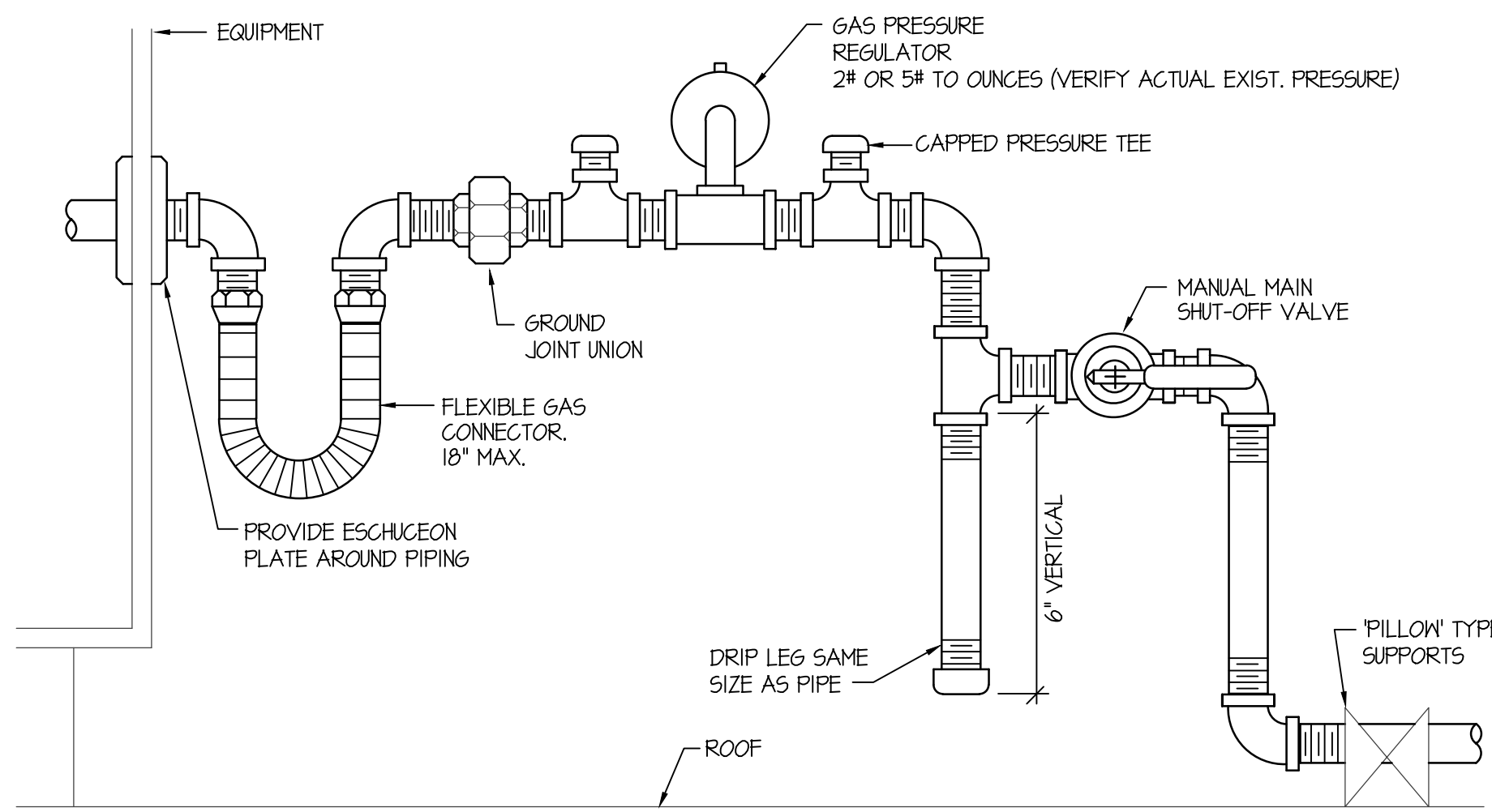
SYM.	CFM	OUTSIDE AIR REQUIRED	SP _e	BLOWER HP.	CHAR	MCA	WEIGHT	GAS CONN.	HEATING				COOLING			REMARKS
									BTU IN	BTU OUT	EAT	LAT	MBH	EAT	WB	
RT-2	8000	800	0.8"	5.0	460/60/3	45.0	2824#	3/4"	400 MBH	300 MBH	65°F	104°F	224.0	80°F	62°F	TRANE MODEL YH4240 SIDE DISCHARGE UNIT WITH HAIL GUARDS AND ECONOMIZER
RT-3	6000	600	0.8"	3.0	460/60/3	33.0	2222#	3/4"	350 MBH	250 MBH	65°F	104°F	166.7	80°F	62°F	TRANE MODEL YC1818184H WITH ADAPTA-CURB, HAIL GUARDS AND ECONOMIZER
RT-4	6000	600	0.8"	3.0	460/60/3	33.0	2222#	3/4"	350 MBH	250 MBH	65°F	104°F	166.7	80°F	62°F	TRANE MODEL YC1818184H WITH ADAPTA-CURB, HAIL GUARDS AND ECONOMIZER
RT-13	8000	800	0.8"	5.0	460/60/3	45.0	2824#	3/4"	400 MBH	300 MBH	65°F	104°F	224.0	80°F	62°F	TRANE MODEL YH4240 SIDE DISCHARGE UNIT WITH HAIL GUARDS AND ECONOMIZER
RT-15	1200	120	0.7"	3/4	460/60/3	12.0	607#	1/2"	120 MBH	96 MBH	65°F	104°F	36.0	80°F	62°F	TRANE MODEL YHC036E4RHA SIDE DISCHARGE UNIT WITH HAIL GUARDS AND ECONOMIZER
RT-16	1945	200	0.7"	1.0	460/60/3	12.3	850#	3/4"	130 MBH	120 MBH	65°F	104°F	55.0	80°F	62°F	TRANE MODEL YHC060F4RHA SIDE DISCHARGE UNIT WITH HAIL GUARDS AND ECONOMIZER

* ALL ROOFTOP UNITS TO COME WITH BAGNET CARDS, FUSED DISCONNECTS, AND W.P. GFCI OUTLET.

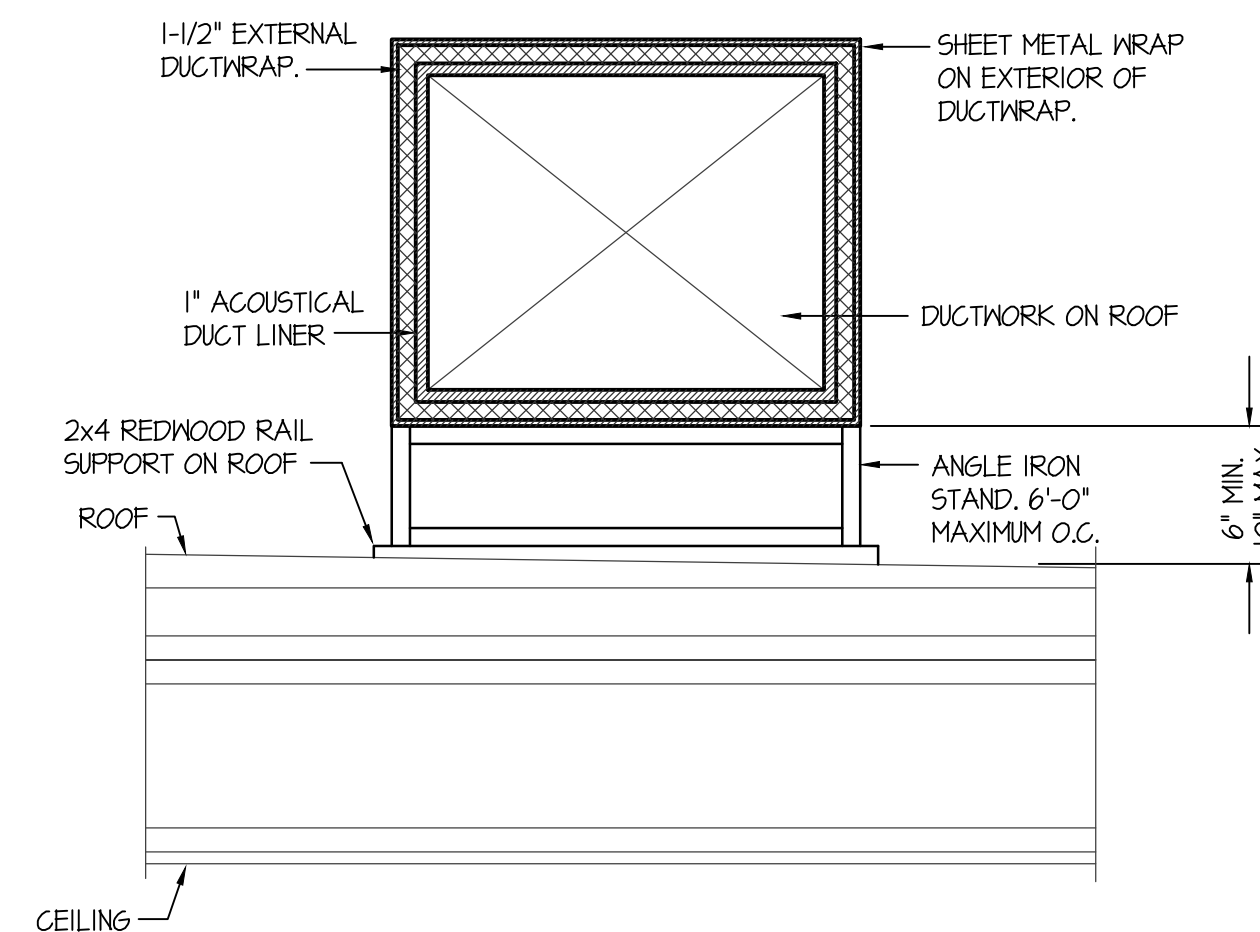


NOTE: POSITION ROOF CURB OVER ROOF JOISTS IN SUCH A MANNER AS TO SPREAD THE WEIGHT OF THE MECHANICAL UNIT OVER AS MANY TRUSSES AS POSSIBLE REGARDLESS OF HOW TRUSSES ARE RUNNING

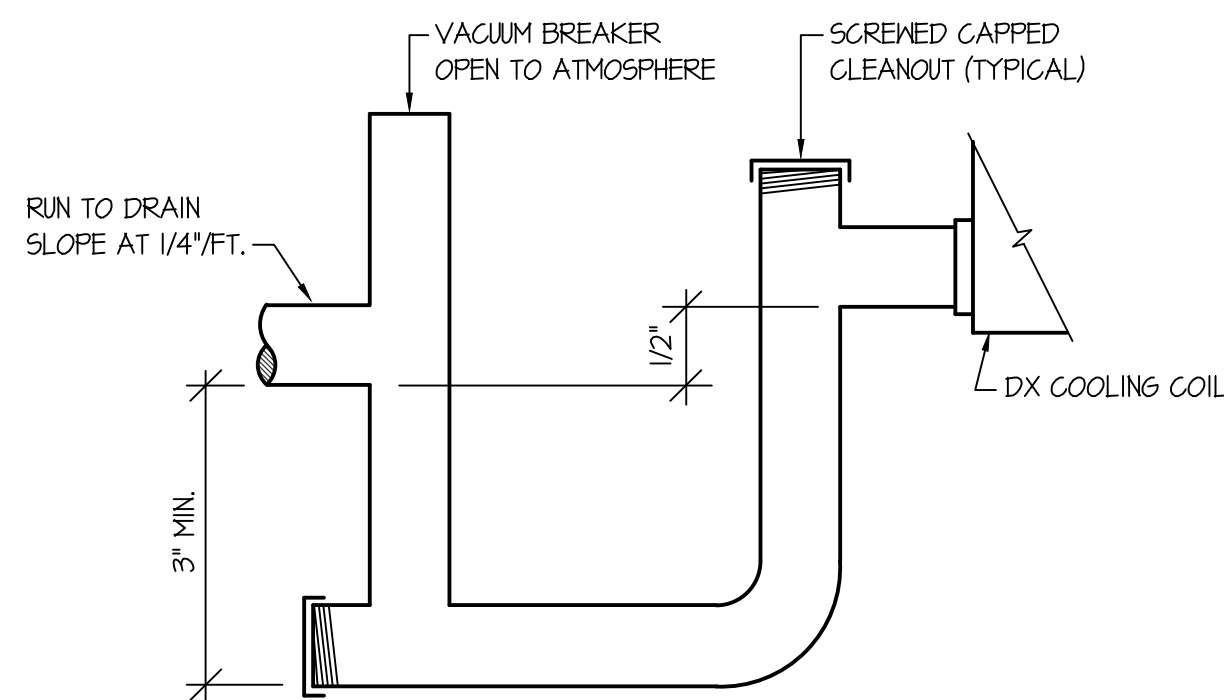
TYPICAL ROOFTOP MOUNTING DETAIL RT-15 & RT-16
 NO SCALE



ROOF TOP GAS PRESSURE REGULATOR DETAIL
 NO SCALE



ROOFTOP DUCTWORK DETAIL
 NO SCALE



ROOFTOP UNIT CONDENSATE DRAIN DETAIL
 NO SCALE

Project #3 – Irving Middle School

Equipment No.	Description	Manufacturer	Model	Serial No.	Notes
IRV-RTU-002	ROOF TOP UNIT	TRANE	YCD0036C1HABE	L24104036D	
IRV-RTU-004	ROOF TOP UNIT	TRANE	YCD036C1HABE	L24104666D	
IRV-RTU-006	ROOF TOP UNIT	TRANE	YCD036C1HABE	L24104035D	
		TRANE	YCD036C1HABE	L24104034D	
IRV-RTU-008	ROOF TOP UNIT	TRANE	YCD036C1HABE	L24104671D	
	ROOF TOP UNIT	TRANE	YCD036C1HABE	L24104037D	
IRV-RTU-010	ROOF TOP UNIT	TRANE	YCD036C1HABE	L24104668D	
IRV-RTU-011	ROOF TOP UNIT	TRANE	TCC024F100BA	H31168642	
IRV-RTU-012	ROOF TOP UNIT	TRANE	YCC024F1L0BC	L281LA92H	Horizontal Discharge

Project #4 – Syringa Elementary

Equipment No.	Description	Manufacturer	Model	Serial No.	Notes
SYR-RTU-001					
SYR-RTU-002	Roof Top Unit 2	TRANE	YOC037C4HABE	L24104050D	
SYR-RTU-003					
SYR-RTU-004	Roof Top Unit 4	TRANE	YDC037C4HABE	L24104684D	
SYR-RTU-005					
SYR-RTU-006	Roof Top Unit 6	TRANE	YDC037C4HABE	L25101102D	
SYR-RTU-007					
SYR-RTU-008	Roof Top Unit 8	TRANE	YDC037C4HABE	L24104679D	
SYR-RTU-009		TRANE	YDC037C4HABE	L24104681D	
SYR-RTU-010	Roof Top Unit 10	TRANE	YDC037C4HABE	L25101101D	
SYR-RTU-011	Roof Top Unit 11	TRANE	YDC037C4HABE	L24104054D	
SYR-RTU-012	Roof Top Unit 12	TRANE	YDC037C4HABE	L2510102052D	
SYR-RTU-013	ROOF TOP UNIT	CARRIER	48TJE004-611QE	3998G20647	
SYR-RTU-014	ROOF TOP UNIT	CARRIER	48TJE004-611QE	3998G20645	
SYR-RTU-015	ROOF TOP UNIT	CARRIER	48TJE004-611QE	3998G20646	

Project #5 – Lincoln Center

Equipment No.	Description	Manufacturer	Model	Serial No.	Notes
LIN-RTU-001	ROOF TOP UNIT	TRANE	YCD036C1HABE	L24104669D	
LIN-RTU-002	ROOF TOP UNIT	TRANE	YCD036C1HABE	L24104667D	
LIN-RTU-003	ROOF TOP UNIT	TRANE	YCD036C1HABE	L24104039D	
LIN-RTU-004	ROOF TOP UNIT	TRANE	YCC024F1L0BC	L2325TM2H	
LIN-RTU-005	ROOF TOP UNIT	TRANE	YCD036C18HABE	L24104665D	

BID SHEET
2019 HVAC EQUIPMENT REPLACEMENT AT
VARIOUS LOCATIONS

Board of Trustees
School District No. 25
3115 Pole Line Road
Pocatello, ID 83201

Date: _____

We, the undersigned, propose to furnish all labor, materials, tools, and equipment and complete all work called for by these specifications in connection with Replacement of HVAC Equipment at Various Locations, Projects 1-5 under the supervision of the School Plant Coordinator and the Director of Business Operations, for the sum of:

<u>PROJECT</u>	<u>AMOUNT</u>
#1 Highland High School, 1800 Bench Rd Replacement of (16) existing roof top gas package units	
Alternate 1(a). Standard Equipment	\$ _____
Alternate 1(b). Higher grade Equipment	\$ _____
#2 Highland High School, 1800 Bench Rd Replacement of (4) roof top gas package units Relocation and conversion of (2) electric package units to gas	
Alternate 1(a). Standard Equipment	\$ _____
Alternate 1(b). Higher grade Equipment	\$ _____
#3 Irving Middle School, 911 N. Grant Ave Replacement of (12) existing roof top gas package units	
Alternate 1(a). Standard Equipment	\$ _____
Alternate 1(b). Higher grade Equipment	\$ _____
#4 Syringa Elementary, 388 E. Griffith Replacement of (15) existing roof top gas package units	
Alternate 1(a). Standard Equipment	\$ _____
Alternate 1(b). Higher grade Equipment	\$ _____

#5 Lincoln Center, 330 Oakwood Dr
Replacement of (5)

Alternate 1(a). Standard Equipment \$ _____

Alternate 1(b). Higher grade Equipment \$ _____

Work can begin June 3, 2019 and must be completed by July 31, 2019.

The Board of Trustees reserves the right to reject any/or all bids or to waive any informalities, or to accept the bid or bids deemed best for School District No. 25, Bannock County, Pocatello, Idaho.

Respectfully submitted,

- Attached, if applicable, is a listing of subcontractors names and addresses for this project.
- Attached is our Affidavit of Alcohol and Drug-Free Worksite, as pursuant to Idaho Code 72-1717.
- Attached is Bidder Certification Form.

Company Name

Authorized Signature / Date

Address

Title

City, State, Zip

Public Works License Number

Phone / Fax Number

Worker's Comp & Liability Insurance Exp. Date

CONTRACTOR'S AFFIDAVIT
CONCERNING ALCOHOL AND DRUG-FREE WORKPLACE

STATE OF _____

COUNTY OF _____

Pursuant to the Idaho Code, Section 72-1717, I, the undersigned, being duly sworn, depose and certify that named contractor is in compliance with the provisions of Idaho Code section 72-1717; that named contractor provides a drug-free workplace program that complies with the provisions of Idaho Code, title 72, chapter 17 and will maintain such program throughout the life of a state construction contract and that named contractor shall subcontract work only to subcontractors meeting the requirements of Idaho Code, section 72-1717(1)(a).

Name of Contractor

Address

City and State

By: _____
(Signature)

Subscribed and sworn to before me this _____ day of _____, 2019.

Commission expires: _____

NOTARY PUBLIC, residing at



BIDDER CERTIFICATION FORM

- 1. Debarment and Suspension - In submitting this bid proposal, we hereby certify that we have not been suspended or in any way excluded from Federal procurement actions by any Federal Agency.
2. Anti-Collusion - In submitting this bid proposal, we hereby certify this proposal was developed and prepared without any collusion with any competing bidder or District employee.
3. Anti-Lobbying - In submitting this bid proposal, we hereby certify that to the best of our knowledge and belief, no appropriated Federal funds have been paid or will be paid by or on behalf of person associated with this proposal to any person for influencing or attempting to influence and officer or employee of any agency, a member of Congress, an office or employee of Congress or an employee of a member of Congress in connection with the awarding of any Federal contract, the making of any Federal grant, the making of any Federal loan, the entering into of any cooperative agreement and the extension, continuation, renewal, amendment or modification of any Federal contract, grant, loan or cooperative agreement.
4. National Sexual Offender Registry - In submitting this bid proposal, you certify to the District that your company will prohibit any persons in your employ who are registered or required to register under the Idaho Sex Offender Registration Act from participation in company business with the District if such participation would require them to be present on school property. You certify further that you have cross checked such employees against the National Sex Offender Registry found at the following web link: http://www.nsopr.gov/

Signed: _____ Date: _____

Name & Title: _____ Phone: _____

Company: _____

Address: _____

City/State: _____