

**POCATELLO/CHUBBUCK  
SCHOOL DISTRICT NO. 25  
Bannock County, Idaho**

**Administration Offices  
3115 Pole Line Road  
Pocatello, Idaho 83201**

**Addendum No. 1**

February 15, 2018

RE: Invitation to Bid, 2018 Door Replacement at Various District Buildings  
School District No. 25  
Pocatello, Idaho 83201

FROM: Renae Bentley  
Business Services  
3115 Poleline Road  
Pocatello, Idaho 83201  
(208) 235-3220  
bentlere@sd25.us

This Addendum becomes a part of the Contract Documents and modifies the original Bidding Specifications, as noted below.

Acknowledge receipt of the attached thirteen (13) School District No. 25 building drawings for the work specified in the Invitation to Bid.

Signature and return of this form Acknowledges receipt of Addendum No. 1. Failure to return the signed Addendum No. 1 may subject the bidder to disqualification.

Signed: \_\_\_\_\_ Date: \_\_\_\_\_

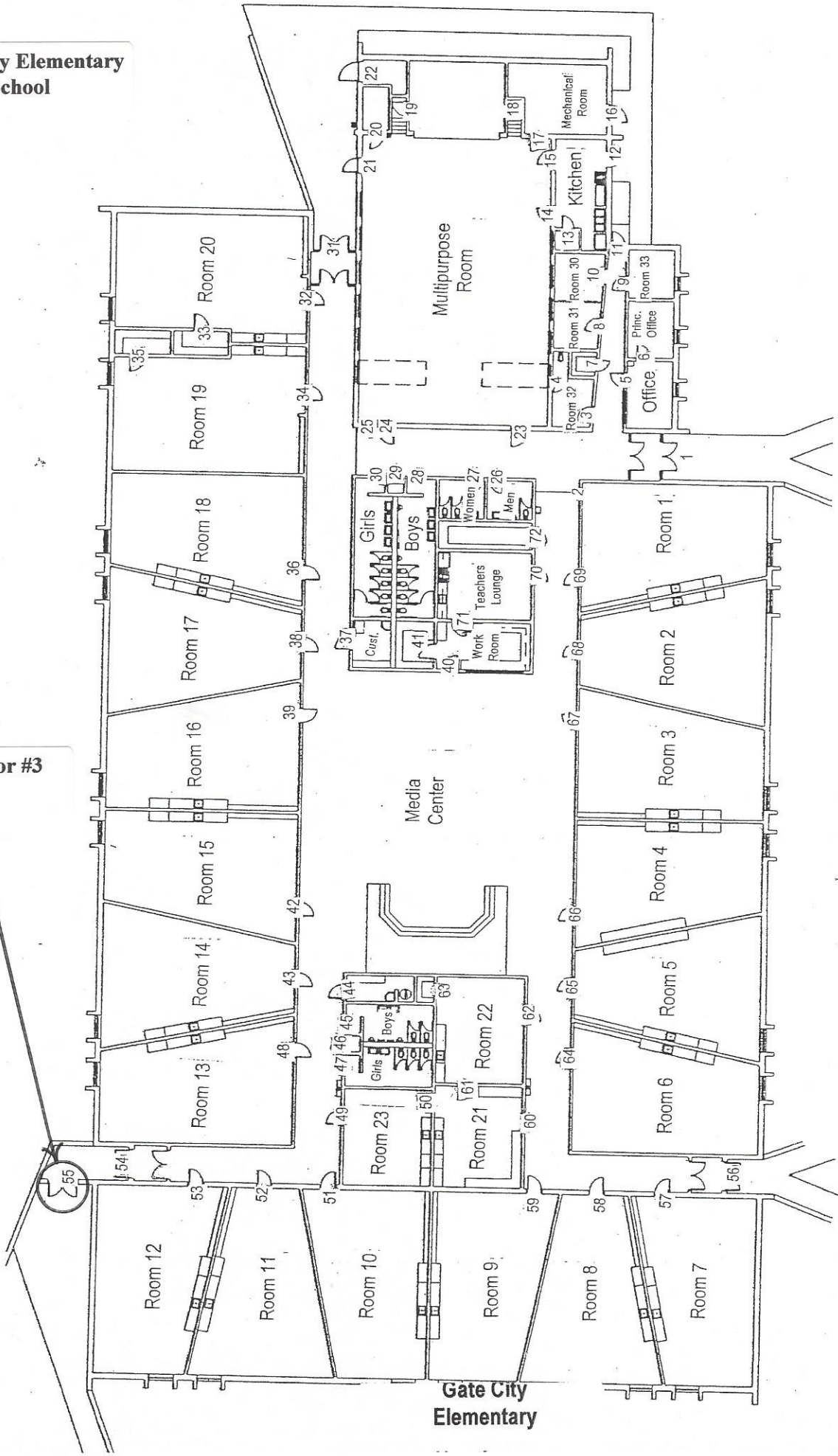
Name & Title: \_\_\_\_\_

Company: \_\_\_\_\_

NO OTHER CHANGES  
END OF ADDENDUM No.1 – February 15, 2018, rlb

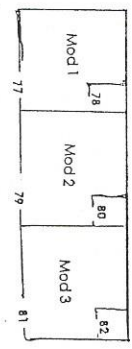
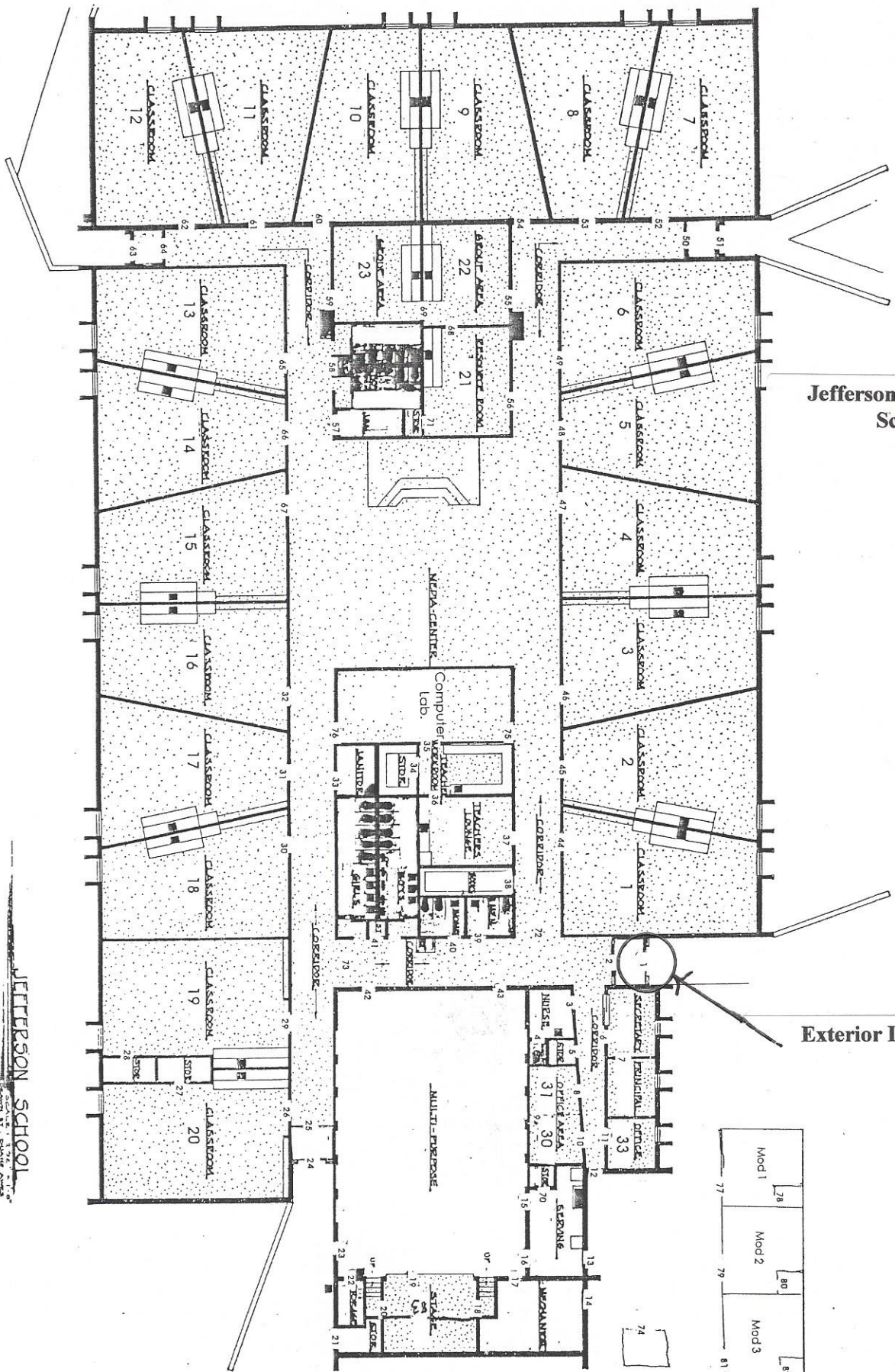
**Gate City Elementary School**

**Exterior Door #3**



GATE CITY ELEMENTARY SCHOOL

**Jefferson Elementary School**

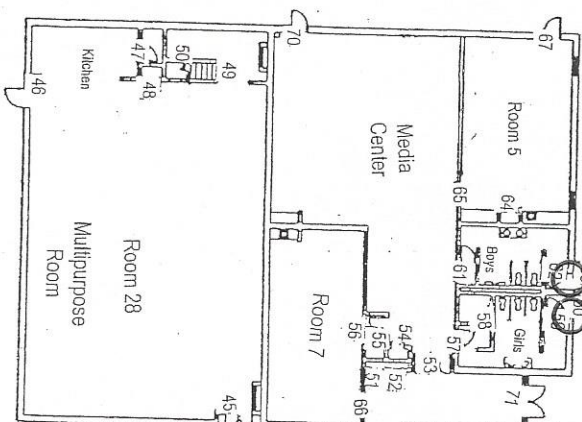


**Jefferson Elementary**

JEFFERSON SCHOOL  
 1000 S. 17th St., Clinton, MO 64705

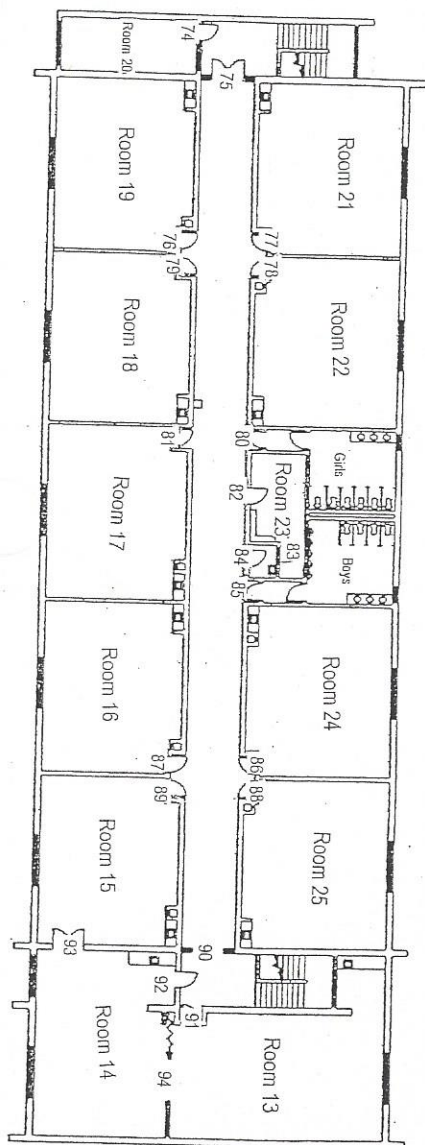
Syringa Elementary School

SYRINGA ELEMENTARY SCHOOL

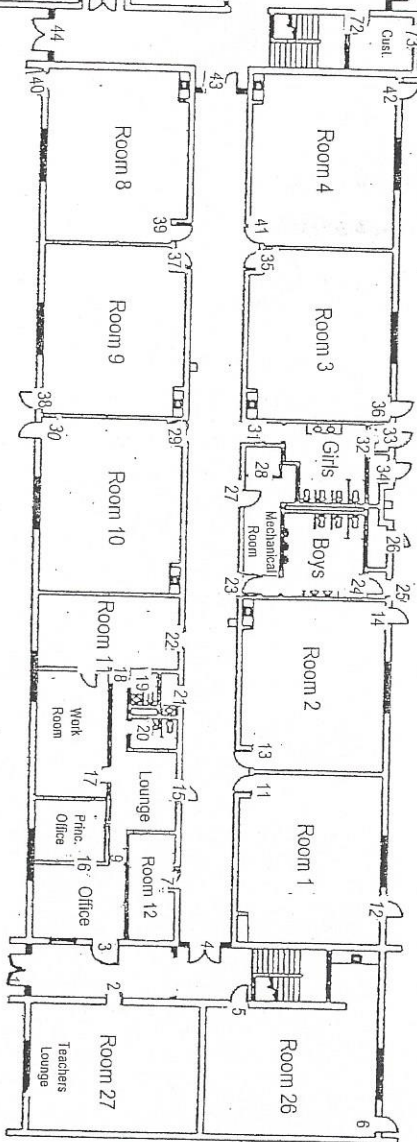


Exterior Door 9

Exterior Door 10



UPPER FLOOR PLAN



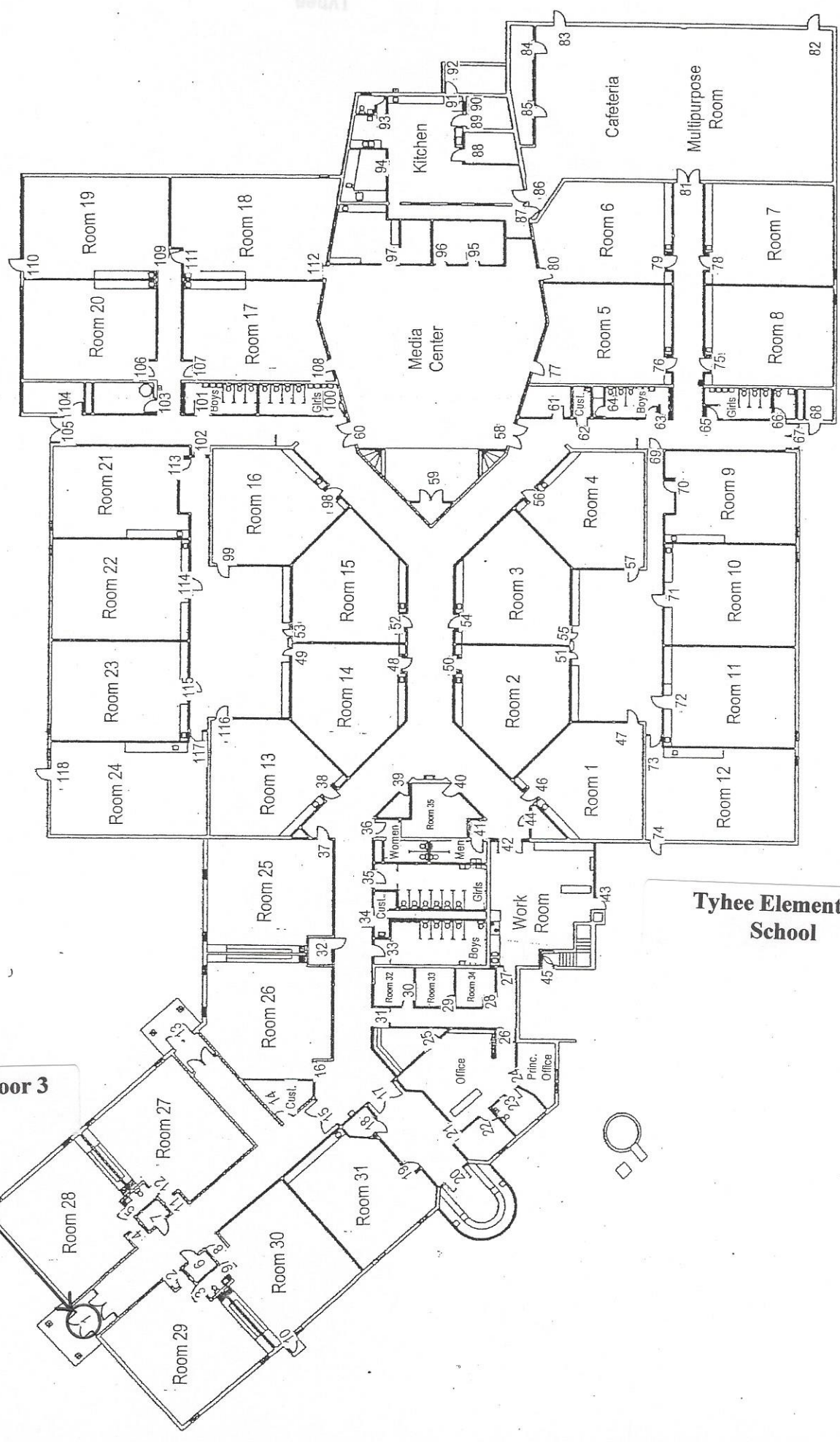
MAIN FLOOR PLAN

Syringa Elementary

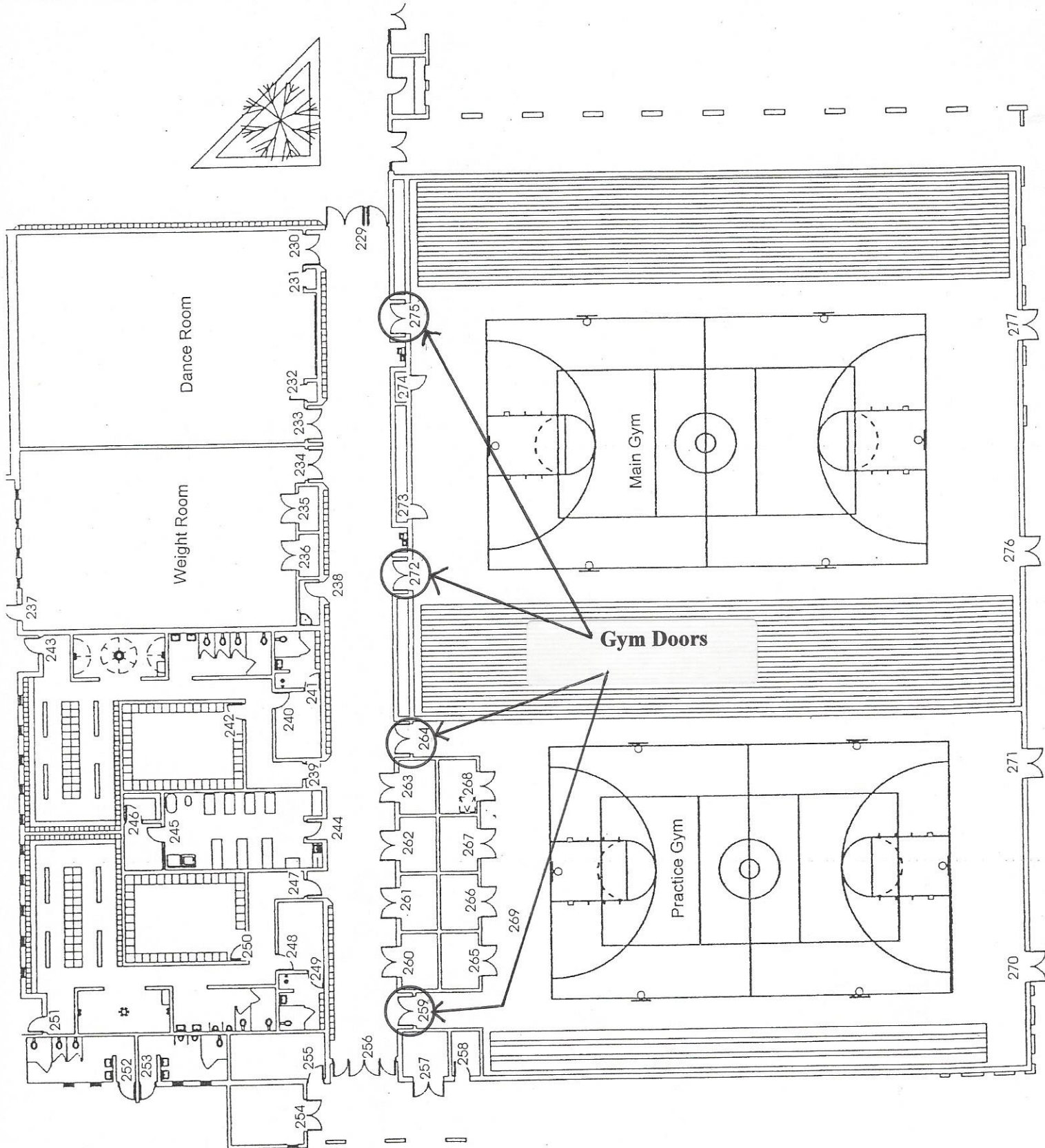
Tyhee Elementary

TYHEE ELEMENTARY SCHOOL

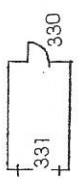
Exterior Door 3



Tyhee Elementary School

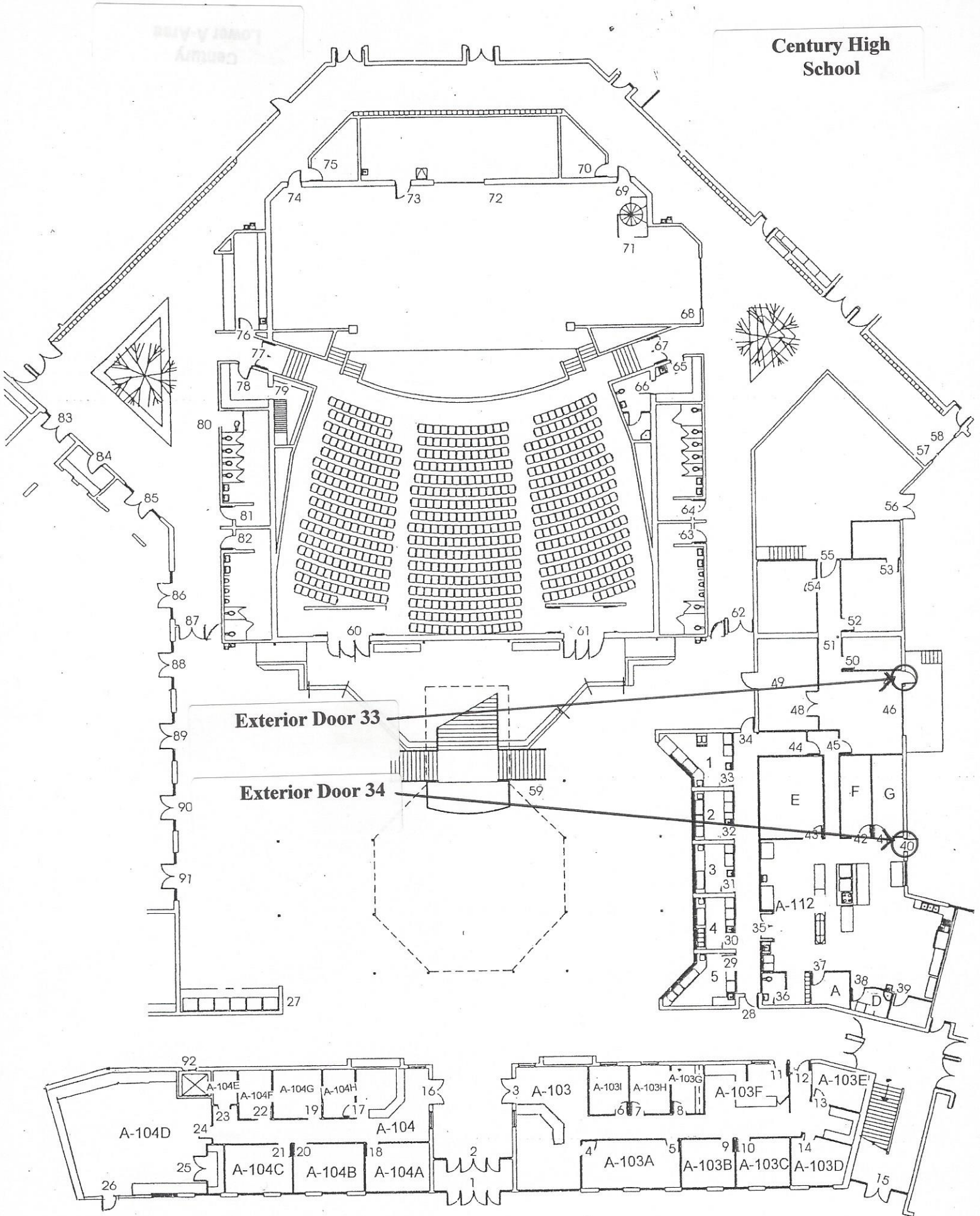


332



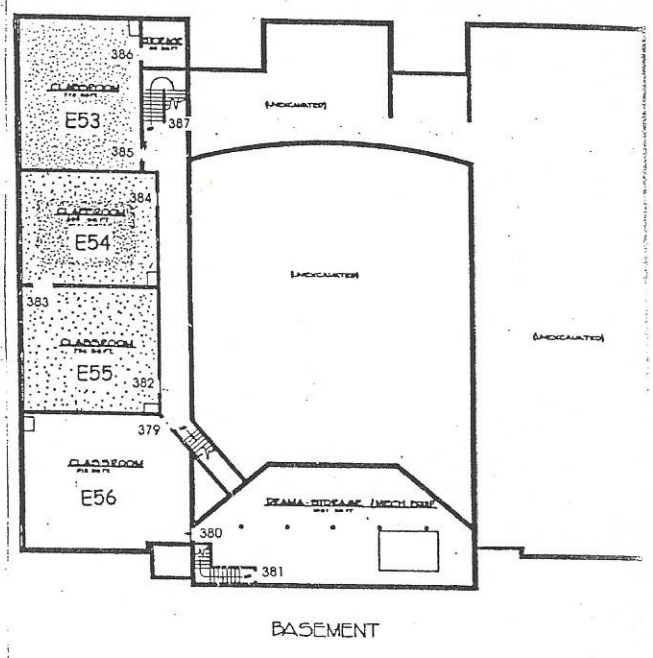
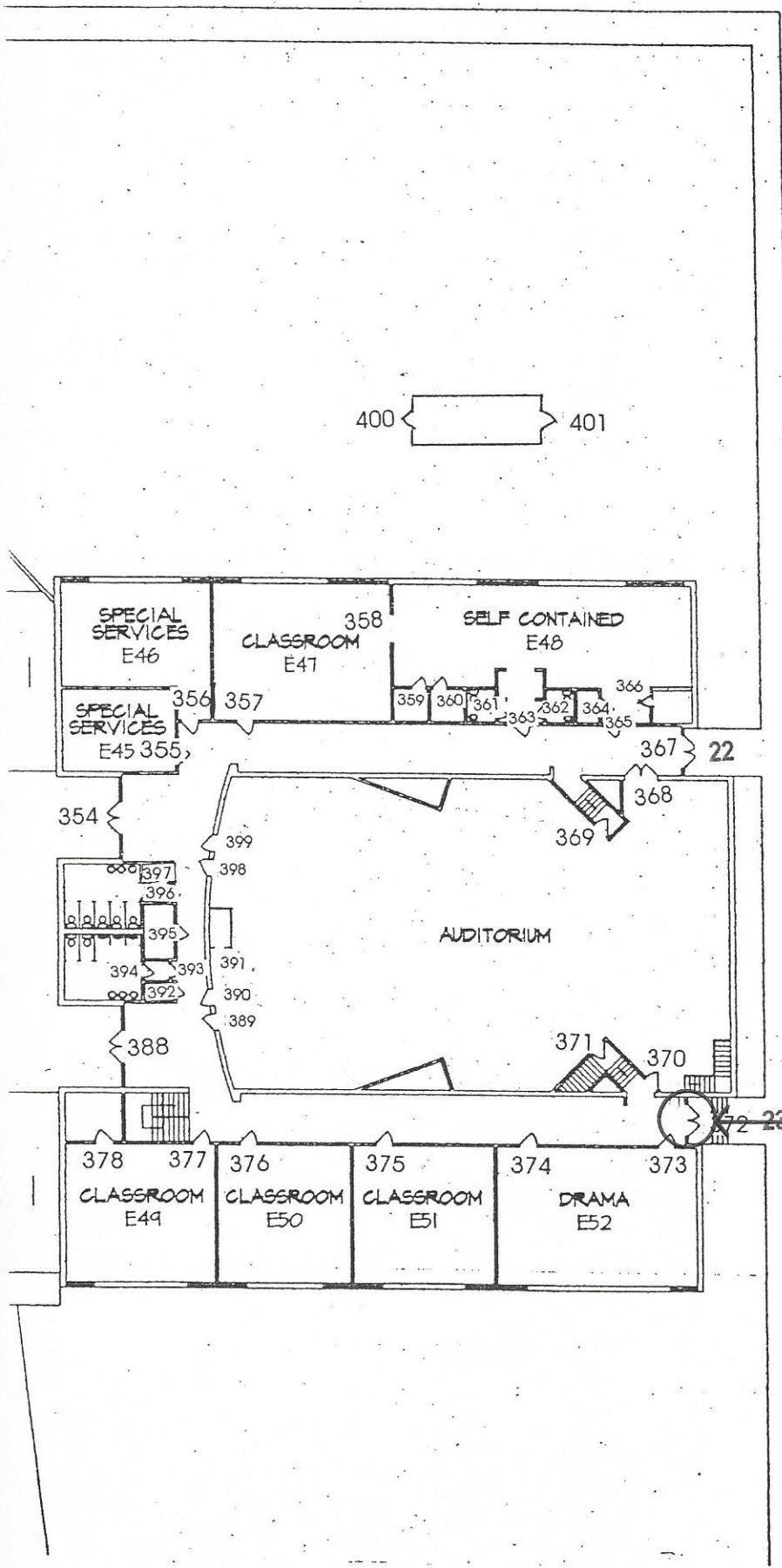
**Century  
P.E. Wing**

Century High School









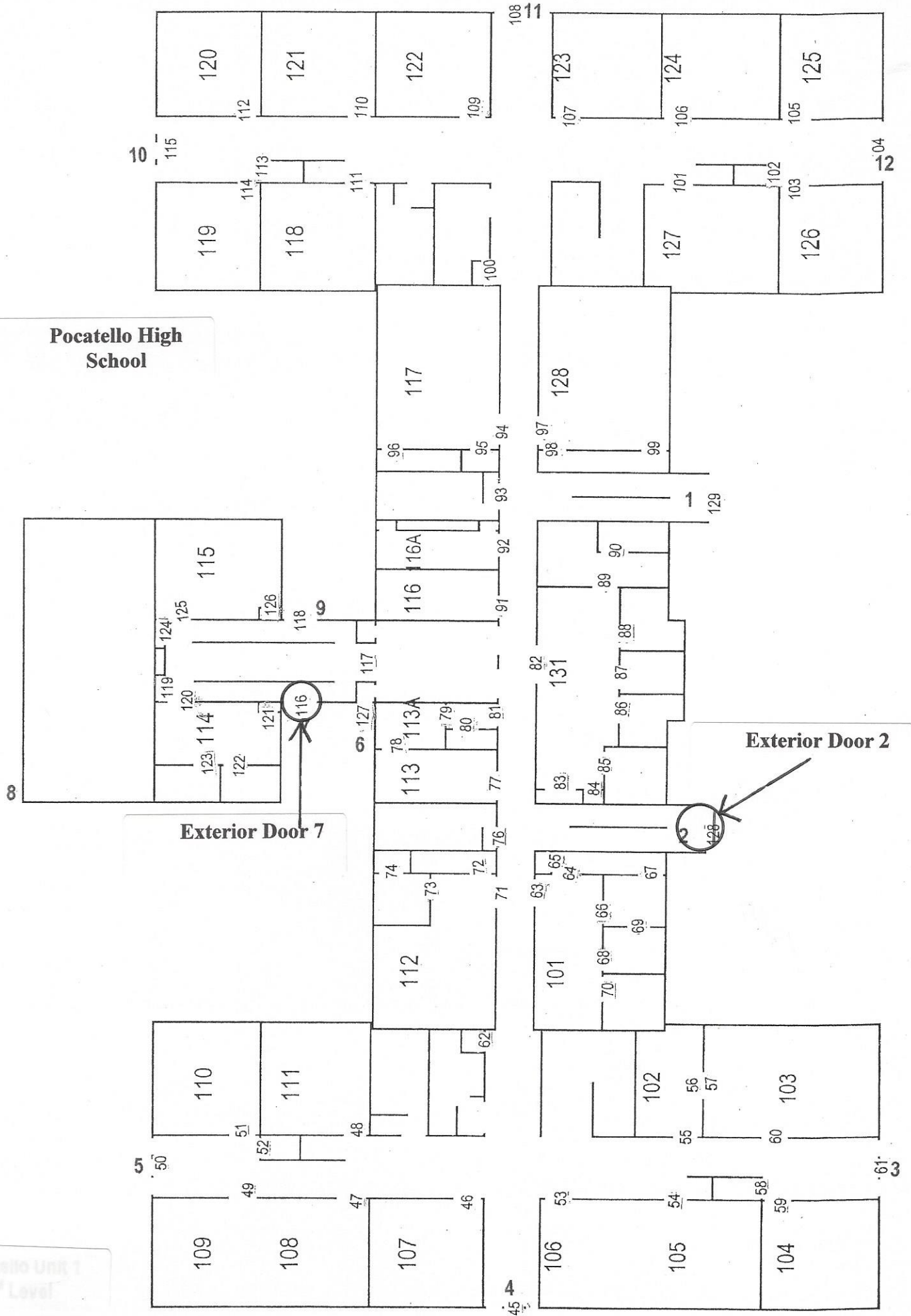
Exterior Door 23

Highland  
E-Wing

Pocatello High School Unit 1 2nd Floor

Pocatello High School

Pocatello Unit 1  
2nd Level

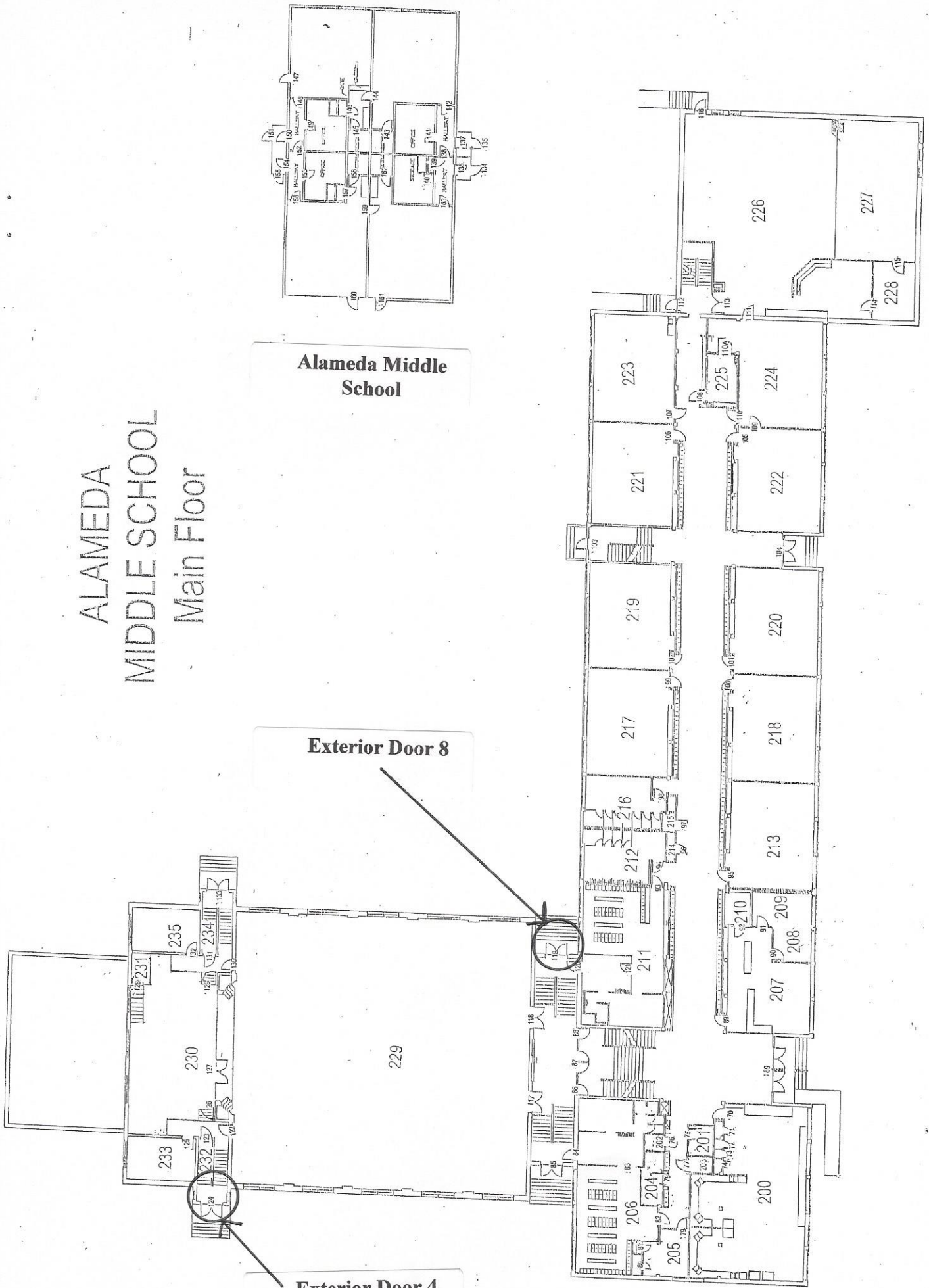


ALAMEDA  
MIDDLE SCHOOL  
Main Floor

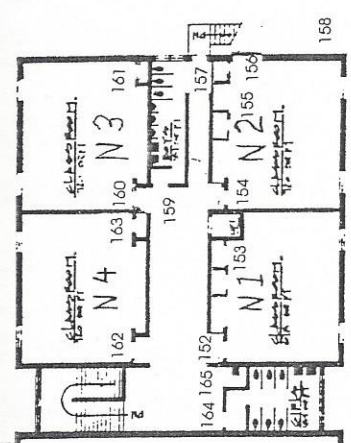
Alameda Middle  
School

Exterior Door 8

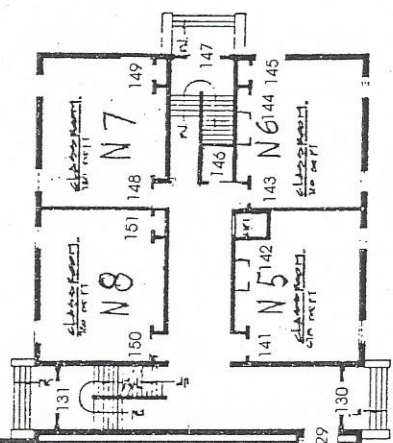
Exterior Door 4



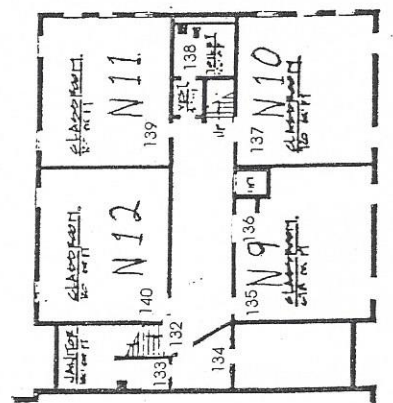




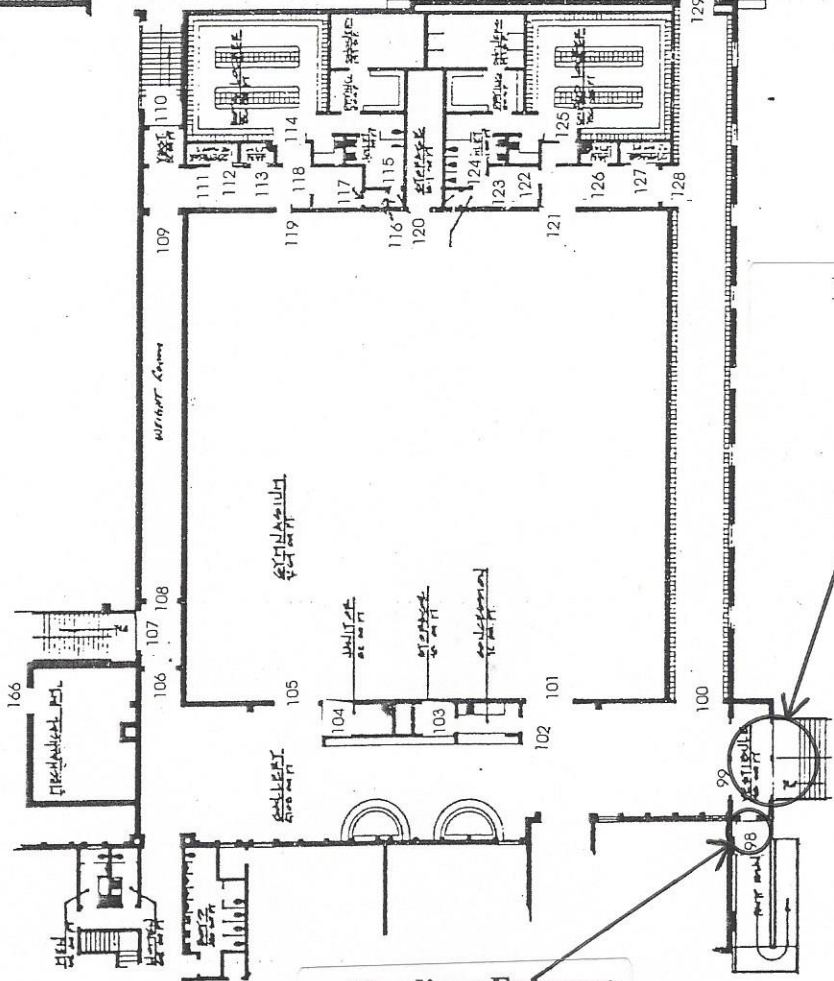
UPPER LEVEL



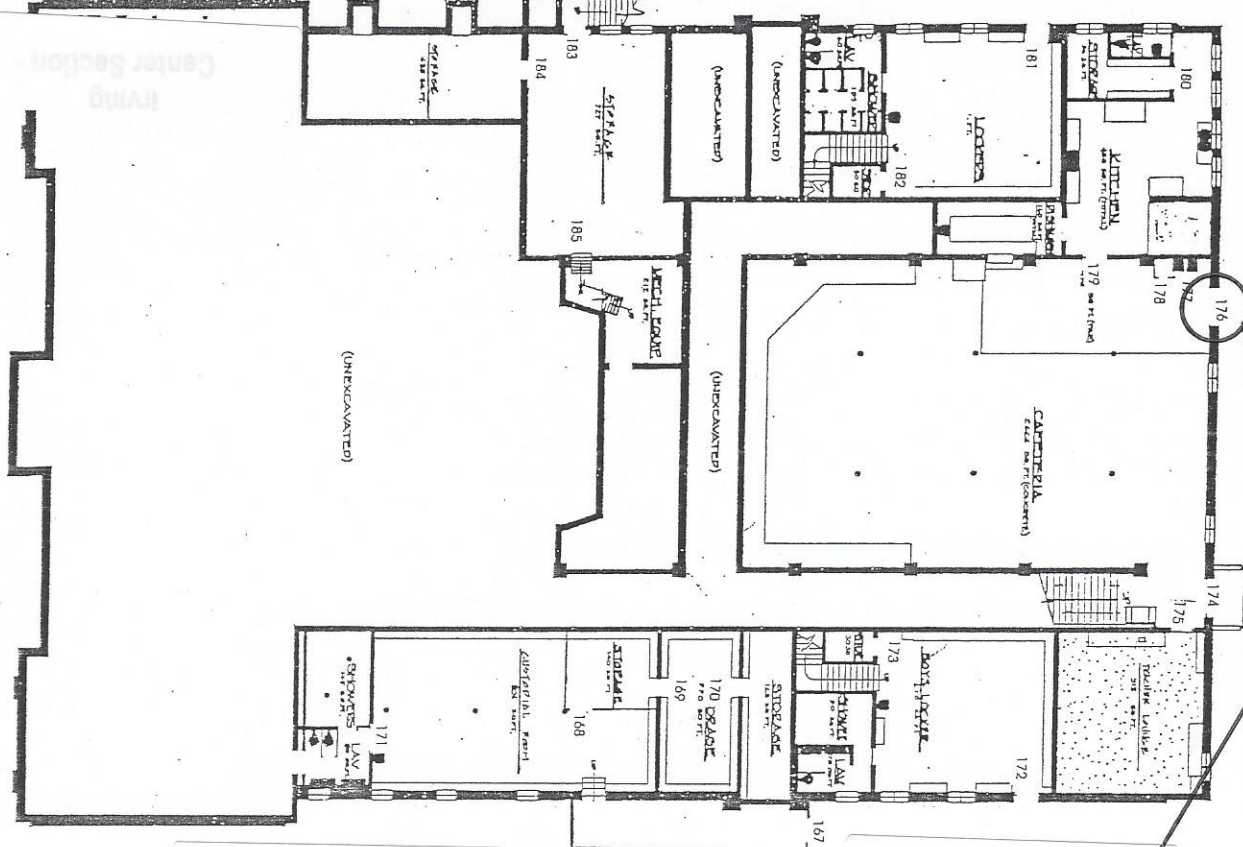
MAIN LEVEL



LOWER LEVEL

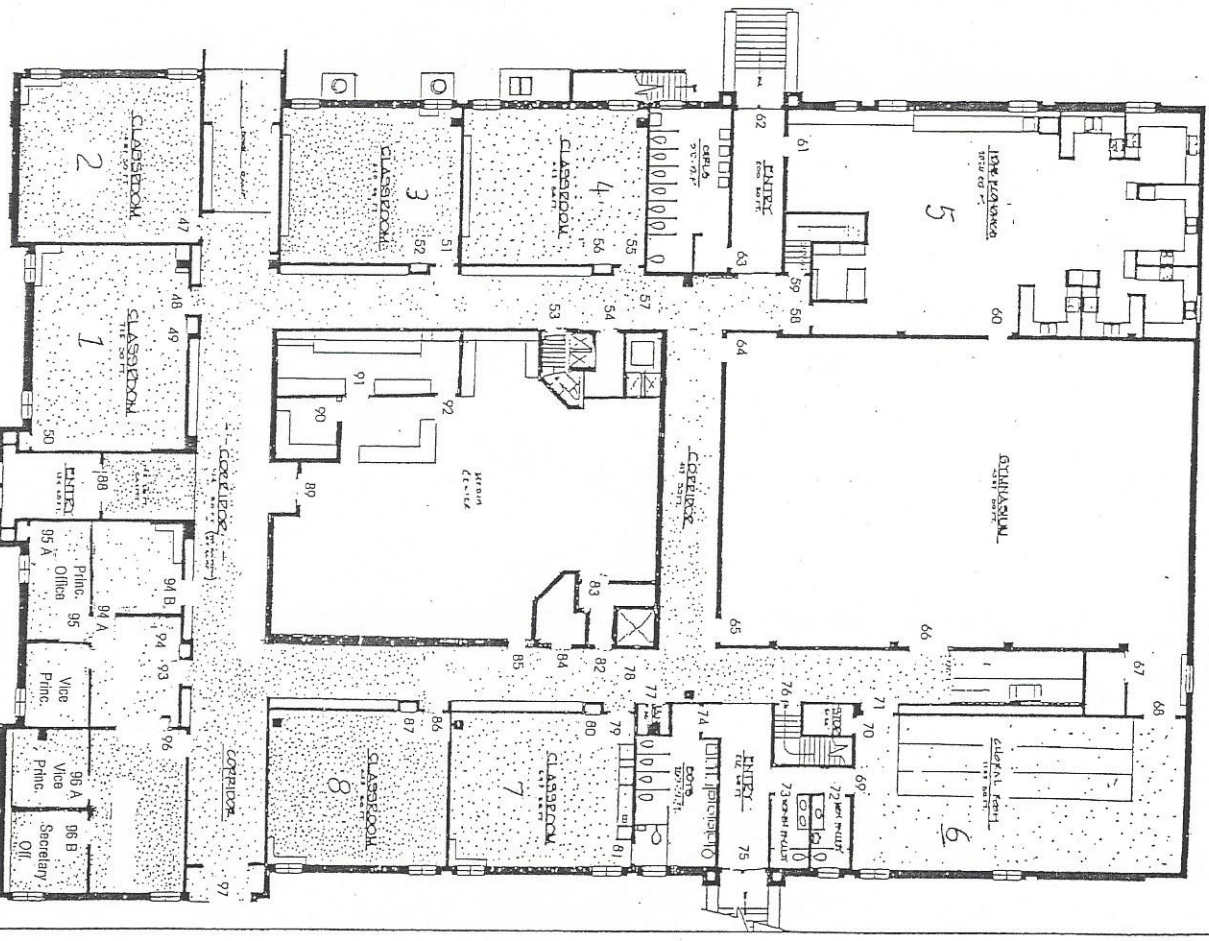


IRVING JUNIOR HIGH SCHOOL  
NORTH SECTION



Irving Middle School

Exterior Door 11



LOWER LEVEL

IRVING JR. HIGH SCHOOL

MAIN LEVEL