



KANSAS CITY

PUBLIC SCHOOLS



Community Chat

Scenarios in Support of KCPS Commitments

Superintendent's Welcome: The Road to Blueprint 2030

Learning from previous plans and assessments:

- Ed Landscape
- KCPS Strategic Plan (2018-23)
- Kansas City Educational System Analysis

We must prioritize students!



Part of the Why – Learning from our System Analysis

2019-20 Percentage of Total Expenditures on K-12 Instruction Compared to Peers

Independence	23.13%
KCPS	23.38%
Raytown	23.67%
Blue Springs	27.08%
NKC	27.49%
Lee's Summit	32.37%
Grandview	34.82%

2019-20 Percentage of Total Expenditures on Operations Costs* Compared to Peers

Blue Springs	12.25%
Independence	14.41%
Lee's Summit	14.55%
NKC	14.55%
Raytown	15.74%
Grandview	18.39%
KCPS	27.70%

*Operations Costs include: Student Transportation, Food Services, Security Services and Operation of Plant





MGT Capabilities

We stand on the front line for education, helping develop effective and efficient solutions – both from student outcomes and operations perspectives. We are school people helping school people. We've been there.

Academic

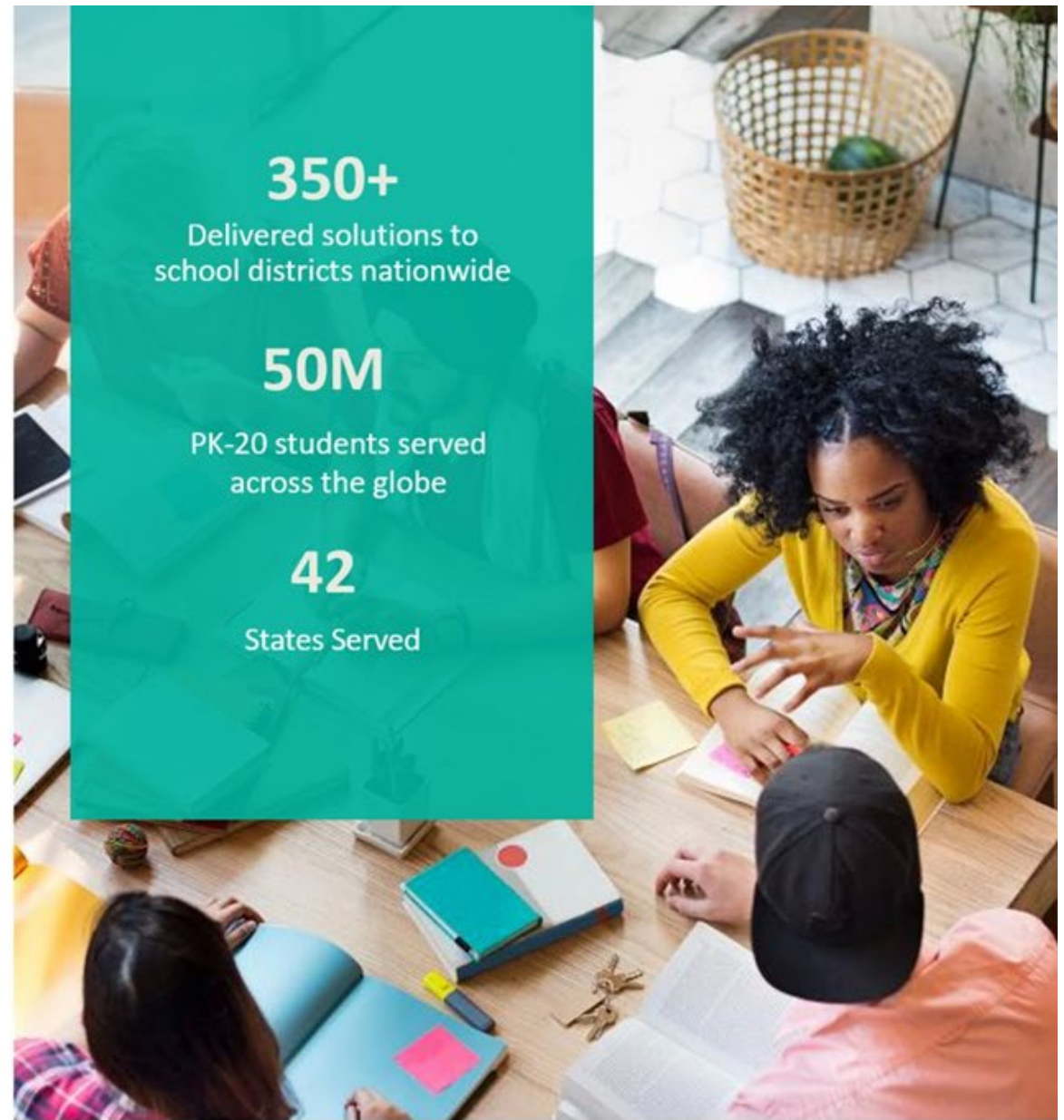
- Community Collaboration
- Demographic Studies
- Enrollment Projections
- Educational Technology Consulting

Facilities

- Facility Master Planning
- Fiscal Impact Studies and Models

Operations

- Operational Reviews
- Performance Assessment
- Needs Assessment
- Program Evaluation
- Strategic Planning



Our Experience

Danville Public
Schools, Virginia

Fairfax County Public
Schools, Virginia

Manassas City Public
Schools, Virginia

Hamilton County
Schools, Tennessee

Metro Nashville Public
Schools, Tennessee

Aurora Public Schools,
Colorado

Fairfield Public Schools,
Connecticut

St. Louis Public Schools,
Missouri

Kansas City Schools,
Missouri

Anne Arundel County
Schools, Maryland

Montgomery County
Public Schools, Maryland

Kent School District,
Washington

Hickman Schools,
Missouri

Springfield Public
Schools, Missouri

Wentzville School
District, Missouri



Agenda

- **The Work So Far**
- **KCPS Commitments**
- **Fulfilling the Commitments Through Action**
- **Presentation of Scenarios**
- **Community Engagement Activities**

What is Blueprint 2030?



Blueprint 2030 is a plan to increase academic achievement and enhance the student experience

- It is the vision for education in Kansas City with 2025 and 2030 goals. It will serve as the update to the current KCPS Strategic Plan.
- Blueprint 2030 will be continuously monitored and updated after the first 5 years to ensure we are on track to achieve the vision.



Blueprint 2030 Timeline

PHASE 1 ASSESSMENT: THRU SPRING '21

PHASE 2 GOAL SETTING: SPRING '21 – WINTER '21/22

PHASE 3 SCENARIO PLANNING: SPRING – FALL '22

PHASE 4 RECOMMENDATIONS: FALL '22

PHASE 5 IMPLEMENTATION: BEGINNING FALL '22 (academic vision)
FALL '23 (any school changes, phased in)

PHASE 6 EVALUATION: ANNUALLY

BLUEPRINT 2030: PLANNING PROCESS



Four Commitments to Kansas City

LEARNING. Student Achievement and Effective Teaching

KCPS will... provide a personalized, rigorous, and culturally responsive instructional system that enables every student to make continuous progress and meet or exceed academic standards.

SUPPORT. Whole Child and Community Partnerships

KCPS will...focus on the student experience, ensuring that every student is challenged, supported and has access to the educational opportunities and supports that best meet their academic and social/emotional needs.

PEOPLE. Talented Workforce and Strong Relationships

KCPS will...attract, develop, and retain a diverse, high-caliber workforce across all departments and schools who are committed to developing positive relationships with our students and their families, our colleagues and the KCPS community, while ensuring KCPS has a caring, effective teacher in every classroom and effective leaders in every school.

SYSTEM. Sustainable and Accredited

KCPS will...be a desirable, sustainable and fully accredited system that practices sound local fiscal stewardship, protects district resources and invests them wisely to best serve the needs of students.



LEARNING — STUDENT ACHIEVEMENT & EFFECTIVE TEACHING

STEAM schools (elementary)



Focus on Culturally Responsive Teaching & Learning



Project-based Learning



District-wide literacy / numeracy focus



Personalized intervention plans for every student below grade level

Interdisciplinary Learning



Flexible Learning Model (secondary)

KCPS is exploring ways to build on the current upward trends in student achievement and strengthen the academic programs in all schools across the district.

Through the consolidation and relocation of several programs, the district aims to expand the reach of these programs and attract additional families to KCPS schools.

SUPPORT — WHOLE CHILD & COMMUNITY PARTNERSHIPS



Attain trauma-informed school status for all KCPS schools (increases SE support resources for schools)

Equitable offerings and opportunities for all schools (world language, fine arts, etc.)



Expansion of non-traditional school options (personalization of educational experiences)



Expanded extracurricular and co-curricular activities/clubs (sense of belonging)

KCPS is continually seeking to support and empower our students and build stronger bonds in the community.

The district has identified strategies for improving access to academic and athletic programs, as well as increasing resources to support all KCPS schools.

PEOPLE — TALENTED WORKFORCE & STRONG RELATIONSHIPS

Build "Grow Your Own" teacher pipeline



Create and implement a leadership development program

Month	Day	Event
August	1	Summer Break
August	2	Summer Break
August	3	Summer Break
August	4	Summer Break
August	5	Summer Break
August	6	Summer Break
August	7	Summer Break
August	8	Summer Break
August	9	Summer Break
August	10	Summer Break
August	11	Summer Break
August	12	Summer Break
August	13	Summer Break
August	14	Summer Break
August	15	Summer Break
August	16	Summer Break
August	17	Summer Break
August	18	Summer Break
August	19	Summer Break
August	20	Summer Break
August	21	Summer Break
August	22	Summer Break
August	23	Summer Break
August	24	Summer Break
August	25	Summer Break
August	26	Summer Break
August	27	Summer Break
August	28	Summer Break
August	29	Summer Break
August	30	Summer Break
August	31	Summer Break
September	1	Back to School
September	2	Back to School
September	3	Back to School
September	4	Back to School
September	5	Back to School
September	6	Back to School
September	7	Back to School
September	8	Back to School
September	9	Back to School
September	10	Back to School
September	11	Back to School
September	12	Back to School
September	13	Back to School
September	14	Back to School
September	15	Back to School
September	16	Back to School
September	17	Back to School
September	18	Back to School
September	19	Back to School
September	20	Back to School
September	21	Back to School
September	22	Back to School
September	23	Back to School
September	24	Back to School
September	25	Back to School
September	26	Back to School
September	27	Back to School
September	28	Back to School
September	29	Back to School
September	30	Back to School
September	30	Back to School
October	1	Back to School
October	2	Back to School
October	3	Back to School
October	4	Back to School
October	5	Back to School
October	6	Back to School
October	7	Back to School
October	8	Back to School
October	9	Back to School
October	10	Back to School
October	11	Back to School
October	12	Back to School
October	13	Back to School
October	14	Back to School
October	15	Back to School
October	16	Back to School
October	17	Back to School
October	18	Back to School
October	19	Back to School
October	20	Back to School
October	21	Back to School
October	22	Back to School
October	23	Back to School
October	24	Back to School
October	25	Back to School
October	26	Back to School
October	27	Back to School
October	28	Back to School
October	29	Back to School
October	30	Back to School
October	31	Back to School
November	1	Back to School
November	2	Back to School
November	3	Back to School
November	4	Back to School
November	5	Back to School
November	6	Back to School
November	7	Back to School
November	8	Back to School
November	9	Back to School
November	10	Back to School
November	11	Back to School
November	12	Back to School
November	13	Back to School
November	14	Back to School
November	15	Back to School
November	16	Back to School
November	17	Back to School
November	18	Back to School
November	19	Back to School
November	20	Back to School
November	21	Back to School
November	22	Back to School
November	23	Back to School
November	24	Back to School
November	25	Back to School
November	26	Back to School
November	27	Back to School
November	28	Back to School
November	29	Back to School
November	30	Back to School
November	30	Back to School
December	1	Back to School
December	2	Back to School
December	3	Back to School
December	4	Back to School
December	5	Back to School
December	6	Back to School
December	7	Back to School
December	8	Back to School
December	9	Back to School
December	10	Back to School
December	11	Back to School
December	12	Back to School
December	13	Back to School
December	14	Back to School
December	15	Back to School
December	16	Back to School
December	17	Back to School
December	18	Back to School
December	19	Back to School
December	20	Back to School
December	21	Back to School
December	22	Back to School
December	23	Back to School
December	24	Back to School
December	25	Back to School
December	26	Back to School
December	27	Back to School
December	28	Back to School
December	29	Back to School
December	30	Back to School
December	31	Back to School
January	1	Back to School
January	2	Back to School
January	3	Back to School
January	4	Back to School
January	5	Back to School
January	6	Back to School
January	7	Back to School
January	8	Back to School
January	9	Back to School
January	10	Back to School
January	11	Back to School
January	12	Back to School
January	13	Back to School
January	14	Back to School
January	15	Back to School
January	16	Back to School
January	17	Back to School
January	18	Back to School
January	19	Back to School
January	20	Back to School
January	21	Back to School
January	22	Back to School
January	23	Back to School
January	24	Back to School
January	25	Back to School
January	26	Back to School
January	27	Back to School
January	28	Back to School
January	29	Back to School
January	30	Back to School
January	31	Back to School
February	1	Back to School
February	2	Back to School
February	3	Back to School
February	4	Back to School
February	5	Back to School
February	6	Back to School
February	7	Back to School
February	8	Back to School
February	9	Back to School
February	10	Back to School
February	11	Back to School
February	12	Back to School
February	13	Back to School
February	14	Back to School
February	15	Back to School
February	16	Back to School
February	17	Back to School
February	18	Back to School
February	19	Back to School
February	20	Back to School
February	21	Back to School
February	22	Back to School
February	23	Back to School
February	24	Back to School
February	25	Back to School
February	26	Back to School
February	27	Back to School
February	28	Back to School
February	29	Back to School
February	30	Back to School
February	30	Back to School
March	1	Back to School
March	2	Back to School
March	3	Back to School
March	4	Back to School
March	5	Back to School
March	6	Back to School
March	7	Back to School
March	8	Back to School
March	9	Back to School
March	10	Back to School
March	11	Back to School
March	12	Back to School
March	13	Back to School
March	14	Back to School
March	15	Back to School
March	16	Back to School
March	17	Back to School
March	18	Back to School
March	19	Back to School
March	20	Back to School
March	21	Back to School
March	22	Back to School
March	23	Back to School
March	24	Back to School
March	25	Back to School
March	26	Back to School
March	27	Back to School
March	28	Back to School
March	29	Back to School
March	30	Back to School
March	31	Back to School
April	1	Back to School
April	2	Back to School
April	3	Back to School
April	4	Back to School
April	5	Back to School
April	6	Back to School
April	7	Back to School
April	8	Back to School
April	9	Back to School
April	10	Back to School
April	11	Back to School
April	12	Back to School
April	13	Back to School
April	14	Back to School
April	15	Back to School
April	16	Back to School
April	17	Back to School
April	18	Back to School
April	19	Back to School
April	20	Back to School
April	21	Back to School
April	22	Back to School
April	23	Back to School
April	24	Back to School
April	25	Back to School
April	26	Back to School
April	27	Back to School
April	28	Back to School
April	29	Back to School
April	30	Back to School
April	30	Back to School
May	1	Back to School
May	2	Back to School
May	3	Back to School
May	4	Back to School
May	5	Back to School
May	6	Back to School
May	7	Back to School
May	8	Back to School
May	9	Back to School
May	10	Back to School
May	11	Back to School
May	12	Back to School
May	13	Back to School
May	14	Back to School
May	15	Back to School
May	16	Back to School
May	17	Back to School
May	18	Back to School
May	19	Back to School
May	20	Back to School
May	21	Back to School
May	22	Back to School
May	23	Back to School
May	24	Back to School
May	25	Back to School
May	26	Back to School
May	27	Back to School
May	28	Back to School
May	29	Back to School
May	30	Back to School
May	31	Back to School
June	1	Back to School
June	2	Back to School
June	3	Back to School
June	4	Back to School
June	5	Back to School
June	6	Back to School
June	7	Back to School
June	8	Back to School
June	9	Back to School
June	10	Back to School
June	11	Back to School
June	12	Back to School
June	13	Back to School
June	14	Back to School
June	15	Back to School
June	16	Back to School
June	17	Back to School
June	18	Back to School
June	19	Back to School
June	20	Back to School
June	21	Back to School
June	22	Back to School
June	23	Back to School
June	24	Back to School
June	25	Back to School
June	26	Back to School
June	27	Back to School
June	28	Back to School
June	29	Back to School
June	30	Back to School
June	30	Back to School
July	1	Back to School
July	2	Back to School
July	3	Back to School
July	4	Back to School
July	5	Back to School
July	6	Back to School
July	7	Back to School
July	8	Back to School
July	9	Back to School
July	10	Back to School
July	11	Back to School
July	12	Back to School
July	13	Back to School
July	14	Back to School
July	15	Back to School
July	16	Back to School
July	17	Back to School
July	18	Back to School
July	19	Back to School
July	20	Back to School
July	21	Back to School
July	22	Back to School
July	23	Back to School
July	24	Back to School
July	25	Back to School
July	26	Back to School
July	27	Back to School
July	28	Back to School
July	29	Back to School
July	30	Back to School
July	31	Back to School
August	1	Back to School
August	2	Back to School
August	3	Back to School
August	4	Back to School
August	5	Back to School
August	6	Back to School
August	7	Back to School
August	8	Back to School
August	9	Back to School
August	10	Back to School
August	11	Back to School
August	12	Back to School
August	13	Back to School
August	14	Back to School
August	15	Back to School
August	16	Back to School
August	17	Back to School
August	18	Back to School
August	19	Back to School
August	20	Back to School
August	21	Back to School
August	22	Back to School
August	23	Back to School
August	24	Back to School
August	25	Back to School
August	26	Back to School
August	27	Back to School
August	28	Back to School
August	29	Back to School
August	30	Back to School
August	31	Back to School

Provide time and framework for professional collaboration (explore calendar/early release options) to address teaching & learning models

Expand professional learning offerings to address key areas of need. (i.e. reading, ESOL, math, Sped strategies/endorsements)



Expand support for 1st & 2nd year teachers (i.e. Mentoring, Interest-groups)

KCPS is recognizes that a school district can only fully achieve its goals for all students by providing teachers and leaders with the resources and opportunities necessary to build their professional strengths.

By investing in creating a strong network of empowered teachers and leaders, the district can help assure each school builds a powerful culture of success.

SYSTEM — SUSTAINABLE & ACCREDITED



Increase Pre K seats



Improve efficiencies across the system (central office and school-based)



Define future facility needs and plans for future-ready buildings



Secure funding for 1st phase of 10-year GO Bond plan



Align grade configurations and system predictability

KCPS is considering a GO Bond to address deferred maintenance needs at schools.

The district is examining options for realizing cost savings and identifying schools in need of additional investment to ensure that every school provides students with future-ready high quality learning environments.

Fulfilling the Commitments through Action

- KCPS is presenting scenarios today for your review and discussion
- The scenarios provide options for meeting the commitments and moving forward to achieve the KCPS mission:

Upholding the promise of an equitable educational experience so Kansas City students thrive socially, emotionally and academically



District Comparisons Across the U.S.

	Grade Levels	Natomas Unified School District Sacramento, CA	Sunnyside Unified District (4407) Tucson, AZ	Union Public Schools Tulsa, OK	Independence Public Schools Independence, MO	Kansas City Public Schools Kansas City, MO
Total Enrollment		13,748	14,942	14,959	14,240	14,113
Elementary	PK-5, PK-6, K-6	5	14	13	20	21
Elementary/Middle	K-8	6	1	0	0	2
Middle	6-8 or 7-8	1	4	2	4	3
Middle/High School	7-12	2	1	0	0	1
High School	9-12	4	2	2	3	5
Total Schools in District		18	22	17	27	32
Average Number of Students Per Building		764	679	880	527	441

- This table compares the number of schools operated in KCPS with peer districts of similar enrollment.
- The table does not include other types of schools operated by the district such as early learning centers, career centers, or other alternative schools. Counting these additional district buildings, KCPS has a total of 37 schools.
- As shown in the table KCPS operates a far greater number of elementary schools than comparably sized districts and more closely mirrors larger districts like Springfield, MO.



Proposed Scenarios

- We are now going to review and discuss three scenarios designed to meet our commitments to improve student achievement and build sustainable systems
- Each of the scenarios will propose
 - Academic and programmatic opportunities
 - The potential needed investment for continued operation of schools to support the academic vision
 - How many schools to continue operating
 - How many schools for potential closure or consolidation
 - The potential cost savings by reducing Central Office inefficiencies and any school closures or consolidation



Desired KCPS Academic and Programmatic Opportunities

- Full expansion of curricular resources and services to students and schools
- Full expansion of foreign language, instrumental music, and science labs into the elementary schools
- Strong increase of elective courses at the middle and high school level
- Project-based learning experiences at all schools
- More efficient staffing model for content and support
- More equitable student experiences within KCPS and among other school districts
- Greater opportunities for innovation and differentiation to meet the needs of all students

Scenario 1

Academic/Programmatic Opportunities

- Allows for full expansion of curricular resources and services to students and schools
- Full expansion of foreign language, instrumental music, and science labs into the elementary schools
- Strong increase of elective courses at the middle and high school level
- Project-based learning experiences at all schools
- Create a more efficient staffing model for content and support
- More equitable student experiences within KCPS and among other school districts
- Greater opportunities for innovation and differentiation to meet the needs of all students

This scenario allows for full academic/programmatic opportunities

KCPS Action	Elementary (PK/K-5) & K-8	Middle (Gr. 6-8)	High (Gr. 9-12)
Continue Operating	<ul style="list-style-type: none"> • 14-16 Schools 	<ul style="list-style-type: none"> • 4 Schools (Including an additional middle school to support 6th grade moving into middle school) 	<ul style="list-style-type: none"> • 4-5 Schools
Closure/Consolidation	<ul style="list-style-type: none"> • 9-10 Schools 	<ul style="list-style-type: none"> • None 	<ul style="list-style-type: none"> • 2-3 Schools

Cost Savings	Needed Investments	Creation of Future-Ready Spaces
\$37.5 million	\$172.5 million	\$140 million

**Change in number of schools operating
37 to 25**

Scenario 2

Academic/Programmatic Opportunities

- Allows for full expansion of curricular resources and services to students and schools
- Full expansion of foreign language, instrumental music, and science labs into the elementary schools
- Strong increase of elective courses at the middle and high school level
- Project-based learning experiences at all schools
- Create a more efficient staffing model for content and support
- More equitable student experiences within KCPS and among other school districts
- Greater opportunities for innovation and differentiation to meet the needs of all students

Highlighted items indicate potential limited, reduced, or eliminated opportunity

KCPS Action	Elementary (PK/K-5) & K-8	Middle (Gr. 6-8)	High (Gr. 9-12)
Continue Operating	<ul style="list-style-type: none"> • 16-18 Schools 	<ul style="list-style-type: none"> • 4 Schools (Including an additional middle school to support 6th grade moving into middle school) 	<ul style="list-style-type: none"> • 5 Schools
Closure/Consolidation	<ul style="list-style-type: none"> • 6-8 Schools 	<ul style="list-style-type: none"> • None 	<ul style="list-style-type: none"> • 2 Schools

Cost Savings	Needed Investments	Creation of Future-Ready Spaces
\$32 million	\$186.3 million	\$155 million

**Change in number of schools operating
37 to 27**

Scenario 2

Academic/Programmatic Opportunities

- Allows for full expansion of curricular resources and services to students and schools
- Full expansion of foreign language, instrumental music, and science labs into the elementary schools
- Strong increase of elective courses at the middle and high school level
- Project-based learning experiences at all schools
- Create a more efficient staffing model for content and support
- More equitable student experiences within KCPS and among other school districts
- Greater opportunities for innovation and differentiation to meet the needs of all students

Highlighted items indicate potential limited, reduced, or eliminated opportunity

What is most important to you?

Tell us via the link below on your personal device
or the tablet provided

https://kc_public_schools.abalancingact.com/blueprint-2030-whats-the-priority

Scenario 3

Academic/Programmatic Opportunities	
<ul style="list-style-type: none"> • Allows for full expansion of curricular resources and services to students and schools • Full expansion of foreign language, instrumental music, and science labs into the elementary schools • Strong increase of elective courses at the middle and high school level • Project-based learning experiences at all schools • Create a more efficient staffing model for content and support • More equitable student experiences within KCPS and among other school districts • Greater opportunities for innovation and differentiation to meet the needs of all students 	
Highlighted items indicate potential limited, reduced, or eliminated opportunity	

KCPS Action	Elementary (PK/K-5) & K-8	Middle (Gr. 6-8)	High (Gr. 9-12)
Continue Operating	<ul style="list-style-type: none"> • 19-20 Schools 	<ul style="list-style-type: none"> • 4 Schools (Including an additional middle school to support 6th grade moving into middle school) 	<ul style="list-style-type: none"> • 6 Schools
Closure/Consolidation	<ul style="list-style-type: none"> • 3-6 Schools 	<ul style="list-style-type: none"> • None 	<ul style="list-style-type: none"> • 1 Schools

Cost Savings	Needed Investments	Creation of Future-Ready Spaces
\$21.5 million	\$207 million	\$165 million

**Change in number of schools operating
37 to 30**

Scenario 3

Academic/Programmatic Opportunities

- Allows for full expansion of curricular resources and services to students and schools
- Full expansion of foreign language, instrumental music, and science labs into the elementary schools
- Strong increase of elective courses at the middle and high school level
- Project-based learning experiences at all schools
- Create a more efficient staffing model for content and support
- More equitable student experiences within KCPS and among other school districts
- Greater opportunities for innovation and differentiation to meet the needs of all students

Highlighted items indicate potential limited, reduced, or eliminated opportunity

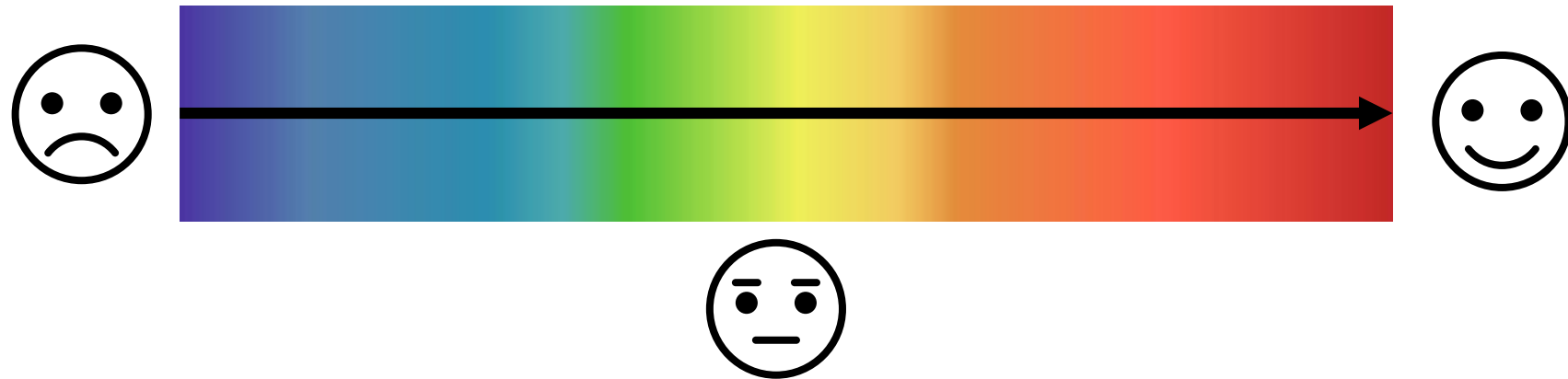
What is most important to you?

Tell us via the link below on your personal device
or the tablet provided

https://kc_public_schools.abalancingact.com/blueprint-2030-whats-the-priority-scenario-2

Let's Chat!

- Take a “temperature check” for each scenario by having participants indicate where they are along this heat spectrum, ranging from the far left (deep blue) meaning they highly unfavorable (cold) on the scenario, to the far right (red) meaning they are highly favorable (hot) on the scenario.



- After indicating where they fall along the heat range, discuss why they landed on that particular point along the range, and what would move them up (warmer) along the range. For example, do they need more information, other options, or if they are set and nothing would move them.
- Then, collect the options and information that would move each of the break-out groups and present them to the full group.

What's Next?

PHASE 3 SCENARIO PLANNING: **SPRING – FALL '22**

PHASE 4 RECOMMENDATIONS: **FALL '22**

PHASE 5 IMPLEMENTATION: **BEGINNING FALL '22** (academic vision)
FALL '23 (any school changes, phased in)

MGT and KCPS will continue collaborative community engagement into the summer and fall regarding these three scenarios.

MGT and KCPS will use public feedback to revise and refine possible scenarios. We will share refinements and engage students, parents, staff, and community members in September 2022.

If you would like more information, please visit our webpage:

www.kcpublicschools.org/blueprint

BLUEPRINT 2030: PLANNING PROCESS



KANSAS CITY PUBLIC SCHOOLS

Community Chats

Blueprint 2030



JOIN US FOR BLUEPRINT 2030 SCENARIO ENGAGEMENT

The next phase of our Blueprint 2030 process includes bringing together scenarios for the future of KCPS schools and programs. From the academic vision to the programs in our schools, we will be discussing how our schools are configured and modeled for the future. And we need your help!

During these community chats, we will seek your feedback on the proposed scenarios for KCPS. We will show potential scenarios and you will get to provide your thoughts. From there, we'll be refining our scenarios based on your feedback. These are big conversations for KCPS - please join us so we can hear what you have to say. *Let's continue building the future together.*



CONNECT WITH US ON OUR SOCIAL MEDIA PLATFORMS:



For more information, please visit: www.kcpublicschools.org/blueprint

Upcoming Community Chats

Meals and childcare will be provided at all engagement sessions.

Interpretation services in Spanish, Somali, Swahili and Burmese will be available at the chats on April 11 and April 12.


April 11:
11:30-1:00 p.m.
Southeast Community Center
4201 E 63rd St
Kansas City, MO 64132

6:30-8:00 p.m.
Central High School
3221 Indiana Ave
Kansas City, MO 64128

April 12:
9:00-10:30 a.m.
Manual Tech
1215 E Truman Rd
Kansas City, MO 64106

5:30-7:00 p.m.
Northeast Middle School
4904 Independence Ave
Kansas City, MO 64124

April 14:
SESSION IN SPANISH
6:00-7:30 p.m.
Carver Dual Language School
4600 Elmwood Ave
Kansas City, MO 64130

 Livestream will be available



Thank you for attending!

Please invite your friends and neighbors to upcoming community chats. We want to hear from them!

