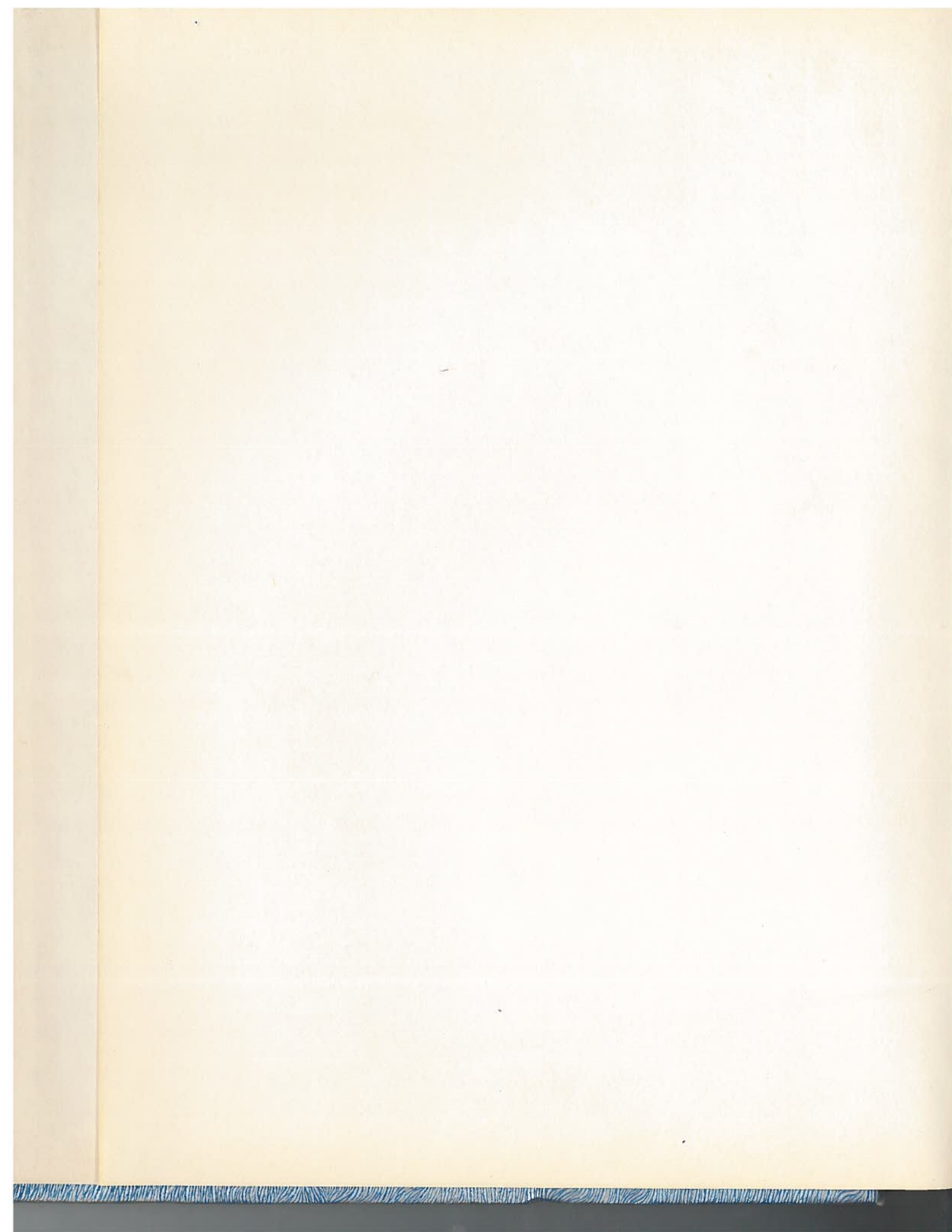


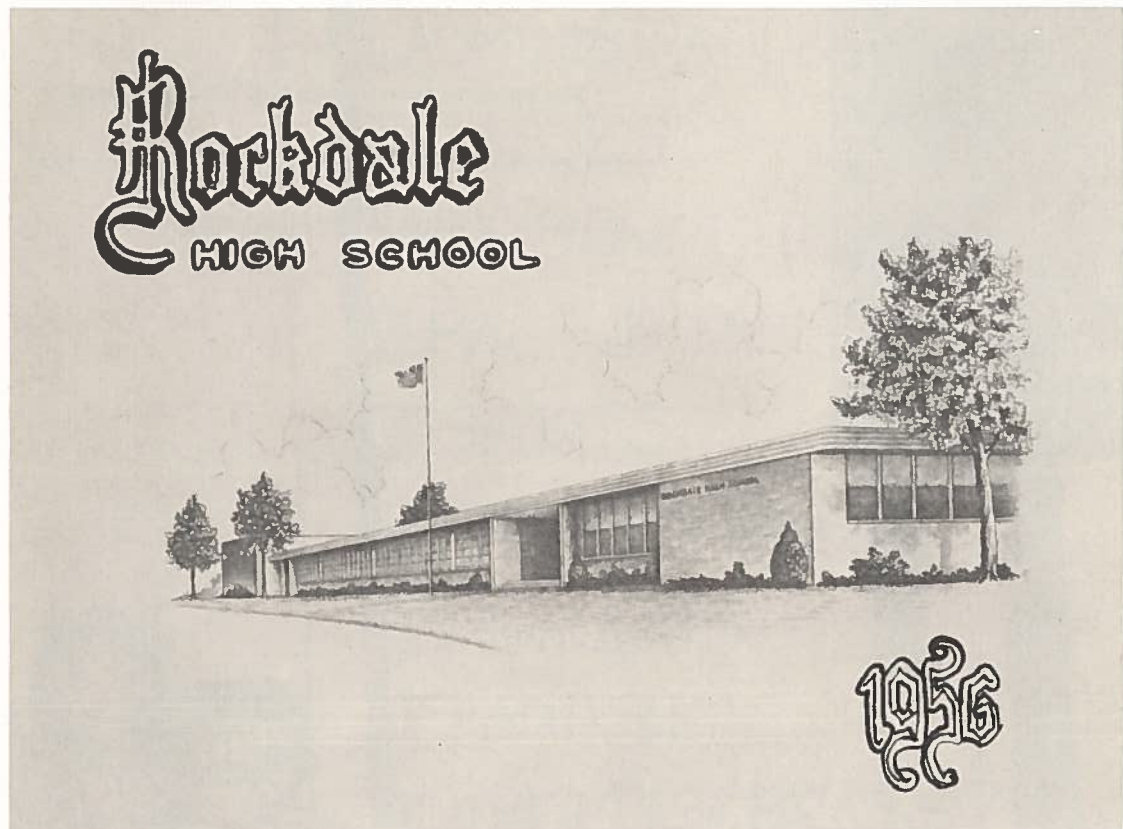


THE LAIR  
1956





# THE LAIR



PRESENTED BY THE  
LAIR STAFF  
ROCKDALE HIGH SCHOOL  
ROCKDALE, TEXAS

# SCHOOL DOORS OPEN MEMORIES OF SCHOOL LIFE



Any way you turn, it's doors, doors, doors! Life is full of them! Some will open and - others you will close.

The Rockdale School doors will always be open to you who will graduate from one class to the next, and to you who graduate from the high school.

Let your tiger mascot be your guide as you review the months of your 1955-'56 school days through the doors of memories.

Sincerely yours,

*Carolyn Hart Jarvis*

Editor





# RHS

## TABLE OF CONTENTS

I. DEDICATION

II. BUILDINGS

III. ADMINISTRATION

IV. CLASSES

V. PERSONALITIES

VI. HALL OF FAME

VII. SPORTS

VIII. ORGANIZATIONS

IX. HIGHLIGHTS

X. SNAPSHOTS

XI. ADVERTISEMENTS





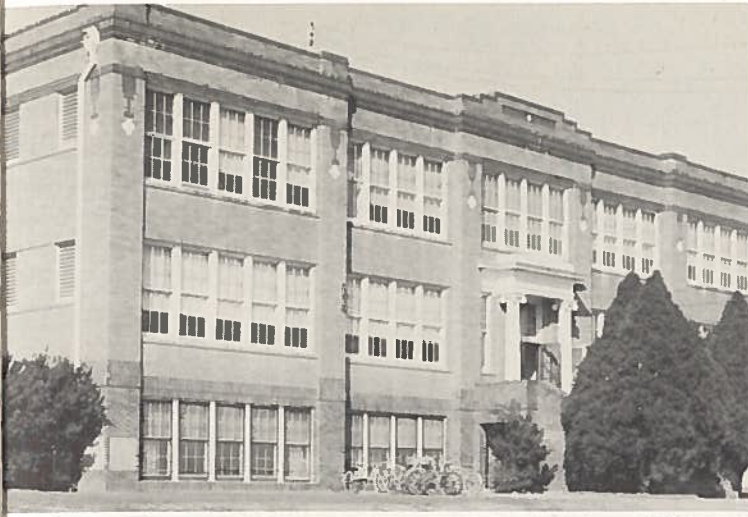
# DEDICATION



We, the Lair staff of 1955-56, proudly dedicate this edition of the Lair to a person whom we all know and admire. Through her patience and understanding she has striven to help any who come to her in matters both large and small. To you, Mrs. Ida Jo Marshall, we dedicate this annual.

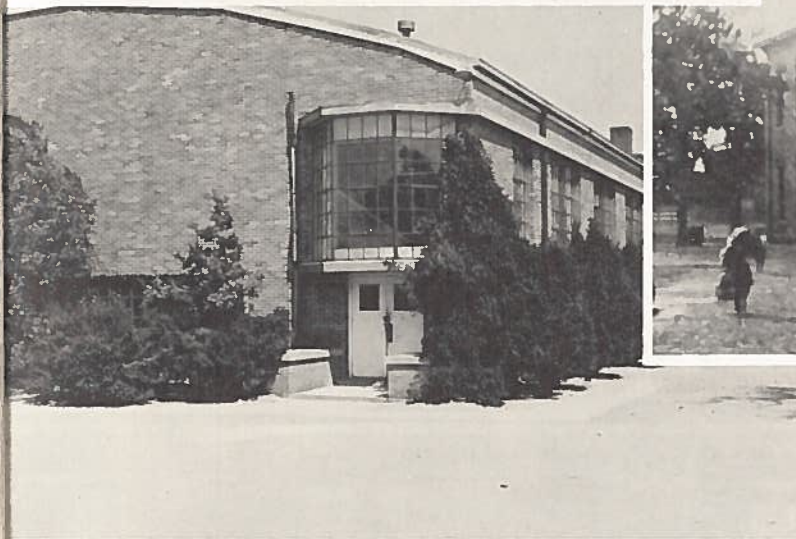


# CAMPUS — OLD



This three-story brick building, erected in 1922, houses the Junior High School. It contains the principal's office, the elementary library, a darkroom, a book room, and 15 classrooms.

The Senior High School moved from this building in September, 1955.



Through the doors of the gymnasium many students have passed. It was erected in 1936 and served as lunchroom, gymnasium, auditorium, and coaches' offices for both the high school and elementary school and in 1954 the lunchroom was moved to the new cafetorium in the new elementary building.



First High School building in Rockdale, Texas, erected in 1893; wrecked in 1955.



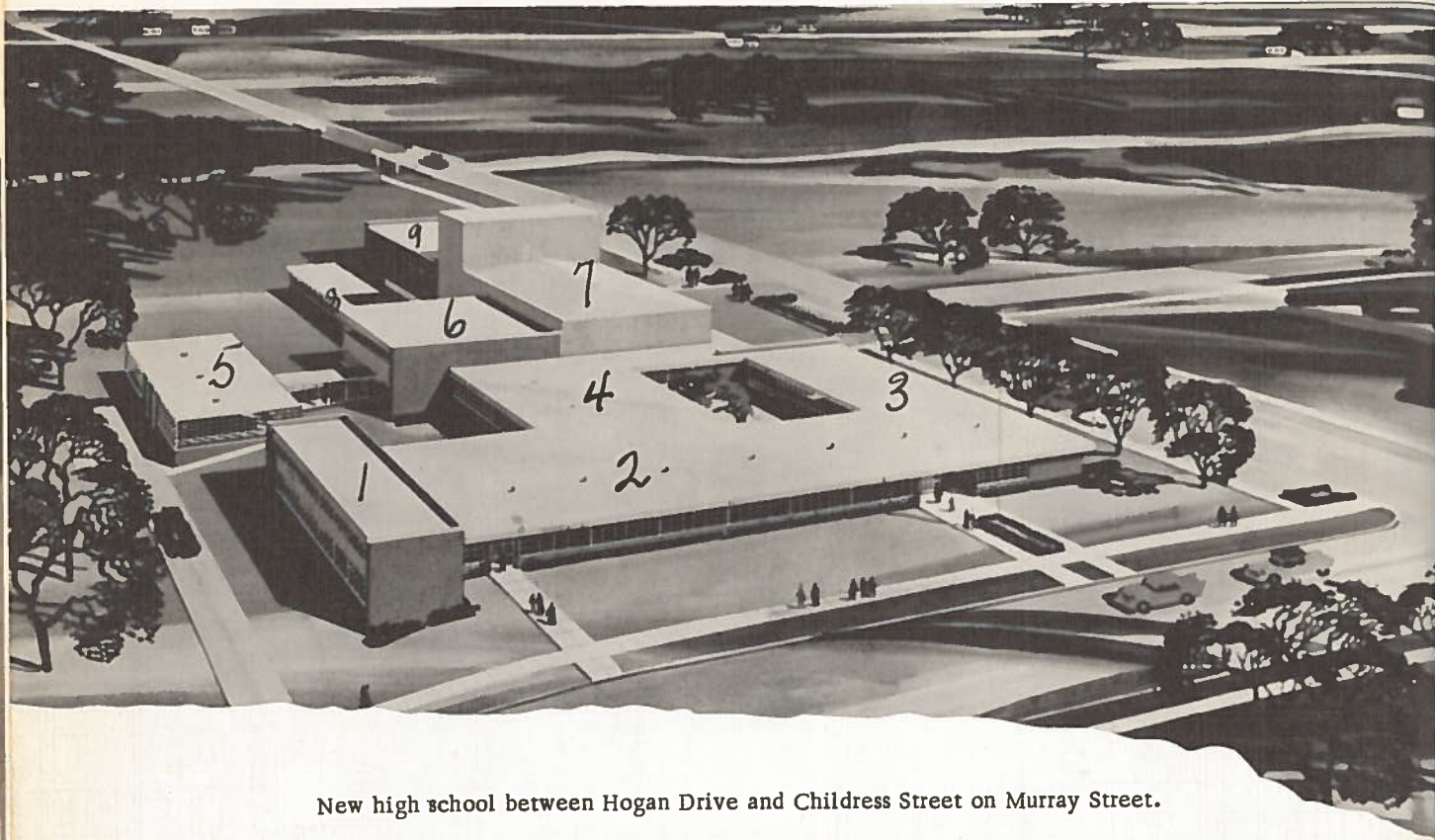
The Old New Salem Building will be discontinued after 1957.



This modern building, erected in 1953 is the new elementary building. It contains the principal's office, 16 classrooms, tax collectors' office, nurse's room, and cafetorium.



# CAMPUS — NEW



New high school between Hogan Drive and Childress Street on Murray Street.

"THOSE WHO ENTER ITS DOORS, LEAVE WITH A GREATER KNOWLEDGE."

1. Upstairs - three rooms in the commercial department.  
Downstairs - the library.
2. Six classrooms, a book room, ladies' lounge, nurses' room, principal's office, Board of Education room, superintendent's office, secretary's office, and corridors.
3. Four modern rooms for the homemaking department, and a cafeteria opening onto a spacious patio.
4. Three science rooms, two storage rooms, men's lounge, girls' rest room and boys' rest room.
5. Shop and agriculture building with offices and storage space.
6. Downstairs - Visual aids room, three classrooms, and two rest rooms.  
Upstairs - five big classrooms.
7. The eight hundred seating capacity auditorium with its magnificent stage.
8. Band hall, directors' office, practice rooms, and equipment room.
9. Modern gymnasium with drying rooms, dressing rooms, rest rooms, and coaches' offices.

Compliments of  
WESTERN AUTO ASSOCIATE STORE  
Edgar S. Dillen, Owner      Rockdale, Texas



# BOARD MEETS HOUSING PROBLEMS



ROCKDALE SCHOOL BOARD

Left to right:

E. H. NOACK

HENRY TYLER

A. W. BUTTS, Secretary

W. T. SCURLOCK, President

J. M. MOORMAN, Superintendent

JOHN YELVERTON

W. L. HALL

LARRY LOWE (resigned)

BRICE CROWE (No picture)

Compliments of a Friend

# ADMINISTRATION



## SUPERINTENDENT'S MESSAGE

Dear Students:

My sincere best wishes go to those graduating this year. Rockdale takes great pride in you as a group of well-poised, straight-thinking, cooperative youth. We will follow your course with profound interest in the future years ahead. You represent my first graduating class of Rockdale High School.

To those remaining, I wish you every success in your school work and offer you my services in making Rockdale Public Schools a pleasant and profitable school experience for you. My desire is to lead you to discover new horizons in the field of educational achievement.

My prayer for the graduates is for your lives to be linked with God in service, and to those who remain with us, my prayers shall ever be that God will bless and keep you close to Him, that you may fully realize that Christian character is developed in the home, the church, and the school. Rockdale offers all three institutions.

Sincerely,

*J. M. Moorman*

J. M. Moorman





MRS. JOINER, Secretary to Superintendent  
It's All in a Day's Job for the Busy Office Staff.



Seated, left to right: Judy Towery, Shirley Williams, Mrs. Louise Joiner, Secretary to Superintendent. Standing: Jodie Magness, Polly Perry, Margaret Munoz, Hartense Ellison, Mary Lois Burford, Bessie Buetow, Nell Morton, Sue Rutherford.

Compliments of: "JUST A FRIEND"





H. D. MAXWELL, Principal of Rockdale High School



#### OFFICE WORKERS

Seated, left to right: LaDonna Tuma, H.D. Maxwell, Principal; Billie Shelton, Barb Chapman, Sandra Wertz. Standing: Gloria Skopek, June Kirchenwitz, Ruby Jackson, Laverne Lamb, Marilyn Goehler, Glenn Cotton, Jo Johnson, Edna Wenzel, Melba Mathews.

Compliments of: WOOD'S CLINIC, Rockdale, Texas





H. D. MAXWELL  
 Degrees: B. S., SHSTC  
 M. Ed., A&M College  
 Principal of High School  
 Teaches Geometry



ERNIE LAURENCE  
 Degree: B. S., Rice  
 Institute  
 M. S., Baylor  
 University  
 Principal of Junior  
 High School  
 Head Basketball  
 Coach  
 Assistant Football  
 Coach

## PRINCIPALS MANAGE SCHOOL AFFAIRS

N. C. MALECHEK  
 Degree: A. B., Southwestern University  
 M. A., University of Texas  
 Principal of Elementary School  
 Teaches Grade 5A

Compliments of  
 L. HAUSMAN, INC., WHOLESALE GROCERS  
 Distributors of Del Monte and Jack Sprat  
 Fine Foods  
 Brenham, Texas



# "IN EACH ROOM, SUPERVISING ALL ACTIVITIES, IS A TEACHER"

MRS. NONNIE BLACKBURN  
B. S., SWTTC  
Graduate Draughon's Business College,  
Houston, Texas  
Commercial

RAYMOND BIRCHFIELD  
B. S., Southern State College; M. Ed., ETSTC  
General Science, History, Civics, Assistant Coach

K. C. BOND  
B. S., SWTSTC; M. Ed., TCU  
Band, Speech

MRS. MALINE CARAWAY  
M. Ed., NTSC, Denton, Texas  
English, Chemistry

MISS NORA DUNCUM  
B. S. and M. Ed., SHSTC  
Algebra I and II, General Math

MRS. GEORGETTE ENQUIST  
B. S., SHSTC  
Biology, Algebra I, Trigonometry, English I and II

PAUL A. JENKINS  
Shop

MRS. BETTY JONES  
B. B. A., Texas Tech College, Lubbock  
Typing, World History, Shorthand, Physical Educa-  
tion.





# TEACHERS

BEN L. KEENE  
B. S., M. A., SHSTC  
Bookkeeping, Math, Science

MRS. DOROTHY LUCKEY  
B. S., U. of Texas  
Home Economics

MRS. IDA JO MARSHALL  
B. S., SHSTC  
M. Ed., U. of Texas  
Librarian

WANNIE MILLER  
B. A., M. S., Austin College  
History, P. E., Track, Head Coach

MRS. ISABEL MOODY  
B. S., SWTSTC  
Home Economics

ALBERT TIMMERMAN  
B. S., Texas A&M  
Vocational Agriculture

FANNIE B. WALLER  
B. A., SWTSTC  
English, Spanish

MRS. FRED BAYLESS  
B. A., ETSTC  
Language Arts in Junior High

MRS. GLADYS COURTNEY  
B. A., SHSTC  
Social Studies in Junior High

MISS OLA MAE DAVIS  
B. A., M. S., TSCW  
Supervisor

# TEACHERS

ROY J. LIERMAN

B. A., Lamar State College of Technology at Beaumont  
Math in Junior High, Junior High Football Coach, Assistant  
Track Coach

MRS. NONNIE T. RENFROE

B. S., and M. A., SWTSTC, University of Southern  
California  
Social Science and Arithmetic in Junior High

MISS NETTIE TURNER

B. S., Texas College of Arts and Industries at Kingsville  
Art

MRS. JODIE TYSON

B. A., S. Western U.  
Art and P. E., Sixth and Seventh Grades

MISS VASHTI SMITH

M. Ed., SWSTC  
Sixth Grade

MISS MARGARET LENGERT

M. A., University of Texas  
Fifth Grade

MRS. DELIAH McCOY

B. S., SWTSTC  
Fifth Grade

MRS. GLADYS MAXWELL

B. A., SHSTC  
Fourth Grade

MRS. MILDRED PETTY

M. Ed., SWTSTC  
Fourth Grade

MRS. LOUISE SESSIONS

B. S., U. of Texas  
Fourth Grade





# TEACHERS



MRS. ALMA DOSS  
B. S., SWTSTC  
Third Grade

MRS. GLEN LUMPKINS  
B. A., SWTSTC  
Third Grade



MISS KATHERINE MELTON  
B. S., Mary Hardin-Baylor  
Third Grade

MRS. BERNADINE RINN  
B. S. and M. Ed., SWTSTC  
Third Grade



MRS. GRACE EILAND  
B. S., SWTSTC; M. Ed., University of Houston  
Second Grade

MRS. WARDIE GOBLE  
B. S., N. E. La. College  
Second Grade



MRS. BERTHA McLEOD  
B. S., University of Texas  
Second Grade

MRS. JEWEL WILLIAMS  
B. A., SWTSTC  
Second Grade



MRS. EUNICE LAWRENCE  
B. S., Mary Hardin-Baylor  
First Grade

MRS. MYRTLE LOVE  
B. A., SWTSTC  
First Grade

MRS. SIDNEY SCHAAF  
B.S., Texas A&I  
Master of Education, SWTTC  
First Grade

MRS. EDITH STILES  
B.S. and M.Ed., SWTTC  
First Grade

MRS. CARMEN YEAGER  
B.S., East Texas S.C.  
First Grade

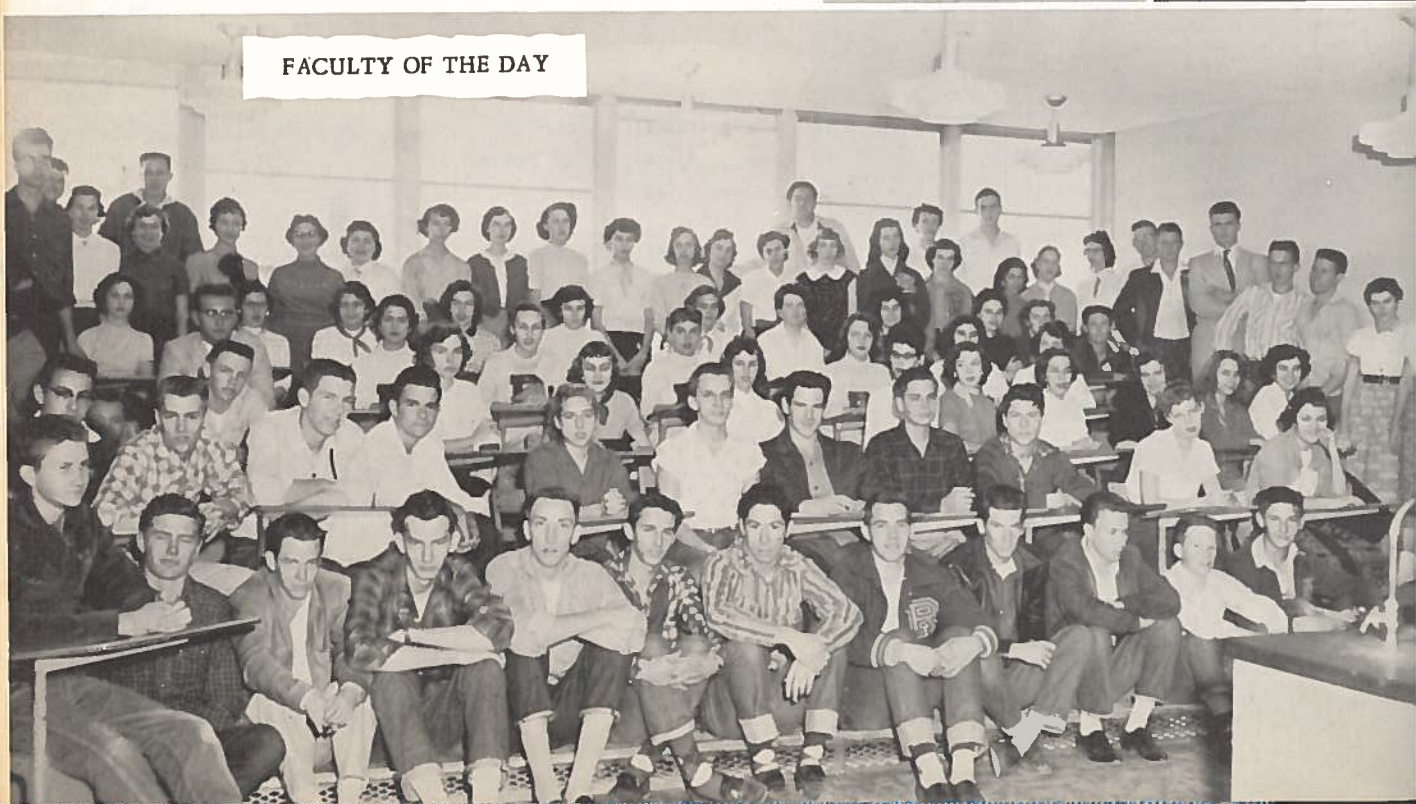
MRS. MOORMAN

MRS. GLADYS WALLIS  
Spanish in High School  
(resigned) at Mid-term

MRS. LOWEEN MALECHEK  
English in Junior High  
(resigned) at Mid-term



FACULTY OF THE DAY





## BEHIND THE SCENES



GUS A. JOHNSON  
Tax Collector

MRS. MADIE WALKER  
Secretary



Bus Drivers: Ed McCoy, L.M. Kirchenwitz, J.D. Kornegay, C.P. Beard, N.E. Dyer, T.M. Alford, Jack Crump, and O.I. Cook.

Compliments of:

PERRY'S DRUG STORE  
Telephone-No. HI6-5846 200 N. Main  
Rockdale, Texas



## THEY MAKE OUR SCHOOLS CLICK



### LUNCHROOM WORKERS

Mrs. Gary, Mrs. Neal, Mrs. Hare, Mrs. Burroughs, Mrs. Gebhart, Mrs. Gilbert, Mrs. Adams, Mrs. Gaffey, Mrs. Ditmar.



### JANITORS

Left to right, seated: Terry McLeod, J. W. Grabein. Standing: D. E. Baxter, Ed McCoy, H. E. Fischer.

ROCKDALE BEAUTY SHOP  
739 West Cameron - Rockdale  
In The Shopping Center



# SENIORS



This finishes four years of hard work and fun!

Boys, left to right: Billy Joe Hall, President; Ronald Todd, Vice President; Marshall Caraway, Student Council; Gordon Harris, Student Council President, Reporter.

Girls: Margie Luckey, Secretary; Martha Cardwell, Student Council; Carolyn Hart Harris, Treasurer.



## SENIORS



**BENTLEY, CAROLE SUE**  
(Transferred from Ft. Worth)  
Assembly Programs 3; Allied Youth 2; National Honor Society 2; Science Club 1; Engineers' Club 1, Secretary 1; Basketball 3; Volleyball 3; Baseball 3; Archery 1; Tennis 1.

**BLACKMON, HELEN SUE**  
Library Club 2; Pep Squad 2; Annual Staff 1; Spanish Club 2; Assembly Programs 1; FHA Chapter 2.



**BOUNDS, PEGGY JO**  
Tiger Tales 2; FHA Chapter 3; Band 4; Band Vice President 1; Nurses' Club 1; Assembly Programs 3; Photographers' Club 1; Class Vice President 1; Annual Staff 1.

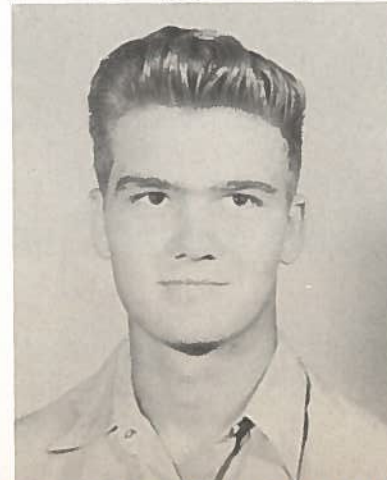
**BRAUN, LOIS ANN**  
Assembly Programs 1; FHA 2; Spanish Club 1; National Honor Society 1.

**BURFORD, MARY LOIS**  
Assembly Programs 1; FHA 3; Library Club 1.

**CAFFEY, CORA SUE**  
FHA 2; Pep Squad 2; Nurses' Club 2, Reporter 1; Science Club 1; Library Club 2, Secretary 1.

**CARAWAY, MARSHALL RAY**  
Student Council 1; Boys' State 1; Football Letterman 2; C-Captain 1; Track Letterman 1; FFA 4, President 1; National Convention, Kansas City 1; Dairy Judging, Second High in State.

**CARDWELL, MARTHA NELL (Mot)**  
FHA 4, President 1, Vice President 1, Parliamentarian 1, Delegate to State Convention in Galveston; Class Officer 2; Student Council 3, Secretary 1; Pep Squad 1; Band 2; Tiger Tales 1; Most Athletic Girl 1; Softball 3; Volleyball Letterman 3; Basketball Letterman 4, Captain 1.





# SENIORS

CHAPMAN, BARB ANNETTE  
(Transferred from Thorndale)  
FHA 3; Teen Can Teen 1; Library Club 1.

CLINARD, MYRL  
FFA 4, Treasurer 1; Shop Club 1; Sergeant-at-Arms 1.

COTTON, GLENN MARIE  
Basketball 3; Letterman 1; Volleyball 1; Baseball 1.

CRANE, DOUGLAS GENE  
Projection Club 2; Assembly Program 2; Science Club 1.



DAVENPORT, WELDON DEAN  
FFA 4; Shop 1; Basketball Letterman 3.

DAVIS, BOB  
(Transferred from Deeville)  
Student Council 1; Safety Patrol 1; Key Club 1;  
National Honor Society 1; Spanish Club 2; Band  
4; Engineers' Club 1; Science Club 1.

EILAND MARIE JOYCE (Ree)  
FHA 4, Pianist 2; Pep Squad 2; Annual Staff 1;  
Nurses' Club 1; Baseball 3; Basketball Letterman  
3; Best Looking Girl 1; Football Sweetheart 1;  
FFA Sweetheart 1; Class Officer 1.

ELLISON, HENRY DEAN  
Assembly Programs 2; FFA 1; FHA Sweetheart  
1; Football Letterman 4; Track 3; Letterman 2.



## SENIORS



**FISCHER, JOHN ELBERT FREDERICK**

Assembly Programs 2; FFA 4, Sentinel 1, Reporter 1, Second High in State Poultry Judging; Band 2; Shop 1, President 1; Football 1.

**FLORES, GUADALUPE**

FHA 3; Spanish Club 2, Vice President 1, Junior Historian 1; Nurses' Club 1.



**FULLER, GAYLE CAROL**

FHA 2; Annual Staff 1; Tiger Tales 2; Nurses' Club 1; Band 4; Assembly Programs 2.

**GARZA, VIRGINIA**

FHA 3; Annual Staff 1; Nurses' Club 1; Basketball Letterman 1; Basketball 3; Volleyball 2; Baseball 2.

**GOEHLER, MARILYN ALICE**

Assembly Programs 4; Pep Squad 1; Cheerleader 3; FHA 4, Secretary 1, Delegate to State Convention in Ft. Worth; Annual Staff 1; Tiger Tales 1; Ranger Staff 1; Class Officer 1; Basketball 2; PTA Carnival Queen.

**GREENWOOD, DOROTHY SUE**

FHA 1; Annual Staff 1; Library Club 3, Secretary 1, Vice President 1, President 1.

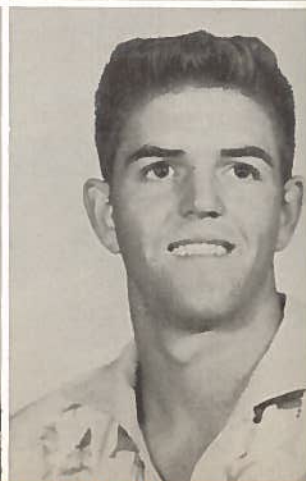


**GROSS, JULIA ANN**

FHA 3; Annual Staff 1; Tiger Tales 1; Basketball Letterman 2; Volleyball 3; Baseball 4; Band 3; Girls' Trio.

**GRUBBS, EDWARD GLYN**

Assembly Programs 2; FFA 1; Class Officer 2; Annual Staff 2; Tiger Tales 3; Football Letterman 4; Track Letterman 4; Basketball Letterman 4; Softball 4; Baseball 1; Volleyball 2.





## SENIORS

HALL, BILLY JOE

FFA 4, Secretary 1, Secretary Area 3-1, Rep. to National Convention in Kansas City 1; Projection Club 2; Tiger Tales 1; Photo Club 1; Science Club 1; Football Manager 1; Class Secretary 1, President 1; Student Council 1; Boys' State 1; Volleyball 1; Citizenship Award Rotary Club 1.

HOLLEY, KENNETH LANE

Assembly Programs 2.

HARRIS, HARRY GORDON, JR.

FFA 2, Greenhand President 1; Band 3, Rep. 1, Stage Band 2; Annual Staff 1; Class Officer 2; Assembly Programs 4; Student Council 2, President 1; Science Club 3, Vice President 1; English Club 1; Football 4, Letterman 3; Basketball 2, Letterman 1; Track Letterman 3.

HENDERSON, RACHEL JUANITA

Assembly Programs 1; FHA 2, Secretary-Treasurer 1; Science Club 2; Library Club 1; Nurses' Club 1; Volleyball 2.



HARRISS, JOHN CHARLES

Saf. Pat. Adv. 1; Tiger Tales 3, Assistant Editor 1; Annual Staff 1; Science Club 2; Spanish Club 2, President 1, Program Chairman 1; Assembly Programs 3; Band 4, Officer 1, Contest First Place 2; Photo Club 1, Reporter 1; English Club 1, President 1; Student Council Award for Scholarship 1; Stage Band 3.

JOINER, WILLIAM TAYLOR (Bill)

Assembly Programs 1; English Club 1; Football 2, Letterman 1; Track 2.



HOLLIMAN, LEE IDA

Band 1; FHA 2; Library Club 3, Vice President 1; Assembly Programs 1; Pep Squad 2.

HARRIS, CAROLYN HART

(Transferred, Trinidad)

FHA 1; Pep Squad 1; Cheerleader 2; Junior History Club 2; Annual Staff 2, Editor 1; Assembly Programs 4; Nurses' Club 2, President 2; Science Club 1, Secretary 1; Basketball 3, Letterman 2; Volleyball 3; Football Sweetheart 1; Most Likely to Succeed 1; Princess to Mt. Pleasant Relays.

## SENIORS



KIRKPATRICK, BARBARA ANN

(Transfer from La Marque)

Student Council 1; Junior Historian Club 1, Song Leader 1; Choral Club 1; Annual Staff 1; Tiger Tales 1; Assembly Programs 6; Pep Squad 1, President 1; Band 1; FHA 1.

LANDS, JACK FERGUSON

Projection Club 3; Football 1; Volleyball 1; Assembly Programs 2; Engineering Club 1, Reporter 1; Track 1; Senior Planning Committee; Exchange Program.



LUCKEY, MARGIE SUE

FHA 3; Band 4, Secretary 1, Treasurer 1, Sweetheart 1; Tiger Tales 2; Annual Staff 1; Class Officer 1; Nurses' Club 1, Vice President 1; Photographers' Club 1.

MATHEWS, MELBA JEAN

Library Club 2, Reporter 1; FHA 3; Tiger Tales 3; Choral Club 1; Annual Staff 1; Nurses' Club 1; Photographers' Club 1.

MOORE, JOHN BAXTER

(Transfer from Monroe)

Freshman Play 1; Stage Band 3; Band 2, Band Captain 1; Heart-Throb 1; Science Club 1; Projection Club 3; Football 1; Track 2; Science Club 2.

MORTON, DORIS EVANELL

FHA 3; Pep Squad 1; Basketball 1.



MULLENDORE, JUDY MAXINE

FHA 3; Library Club 2; Spanish Club 2; Pep Squad 1; Tiger Tales 1; Annual Staff 1.

MUNOZ, MARGARET

FHA 3; Junior Historian 1; Spanish Club 2; Nurses' Club 1.





# SENIORS

**NUNEZ, MARY LOUS**  
(Transfer from Riverside, Rhode Island)  
Typing Club 1; Glee 1; Dramatic 1; Spanish 1.

**PELZEL, HENRY**  
FFA 3.

**PETERSON, SARAH FRANCES**  
(Transfer from Trinidad)  
Class Officer 1, Secretary 1; Tiger Tales 1;  
Basketball 1, Manager 1; FHA 3; Junior Historian  
1, Reporter 1; Cheerleader 1; Pep Squad 1;  
Science Club 1, Reporter 1; Annual Staff 1;  
Photographers' Club 1, Secretary 1; Volleyball  
1; Tennis 1; Baseball 1.

**PIMPLER, CARROLL LEE**  
FFA 3; VIC 1, Reporter 1.



**RICHARDS, CECILIA BETH**  
FHA 1; Band 2, Twirler 1; Spanish Club 2; As-  
sembly Programs 2; Class Favorite 2; Basketball  
1; Annual Staff 1; Cheerleader 1; Choral Club  
1; Science Club 1.

**ROGERS, JAMES ERNEST**  
(Transfer from Dallas)  
ROTC 1; Science Club 2; Photographers' Club 1;  
Engineering Club 1; Volleyball 1.

**RUTHERFORD, BETTY SUE**  
FHA 4, Parliamentarian 1, Treasurer 1; Basket-  
ball 4, Letterman 3; Volleyball 4; Baseball 4;  
Pep Squad; Band 1; Cheerleader 1; Annual Staff  
2; Tiger Tales 3; Senior Planning Committee 1;  
Science Club 1; Choral Club 1.

**SHELTON, BILLYE LOUISE**  
(Transfer from Cameron)  
Student Council Representative 1; FHA 1; Library  
Club 2; Choral 1; Basketball 1, Manager 1; Pep  
Squad 1, Secretary 1; Tennis 1; Assembly Pro-  
grams 3.



## SENIORS

**SMITH, JAMES CHARLES**

Band 3; FFA 1; Science Club 3; Engineering Club 1; Assembly Programs 1; Dance Band 2; Spanish Club 1.

**STEPHENS HEINTZE, GLORIA**

Assembly Programs 2; FHA 3; Basketball 4, Letterman 3; Band 1; Pep Squad 1; Volleyball 4; Baseball 4; Tiger Tales 2; Annual Staff 2.

**TODD, RONALD**

Assembly Programs 3; Class Officer 1, Vice President; FFA 2, Vice President 1; Football 4, Letterman 1; Basketball 4, Letterman 2; Engineering Club 1, Program Chairman 1; Senior Planning Committee.

**TOOLE, WINFRED PENDER**

FFA 3.



**TUMA, FRANZ LADONNA**

(Transfer from Beaumont)

Glee Club 2; FHA 3; Tiger Tales 1; Annual Staff 2; Red Cross 2.

**TUNNELL, THOMAS DUKE**

Assembly Programs 2; Projection Club 1; Football 1; Baseball 1; Basketball 1; Volleyball 1; Engineering Club 1, Vice President; Senior Planning Committee.

**TYLER, BARBARA ANN**

Class Officer 2, President 2; Annual Staff 2; Tiger Tales 2, Editor 1; FHA 2, Vice President 1, Reporter 1; Assembly Programs 4; Basketball 4, Letterman 4; Baseball 3; Volleyball 4; Band 3.

**WENZEL, JOEVA YVETTE**

Assembly Programs 2; Band 4, Twirler 3, Drum Major 1; Band Officer 1, Secretary-Treasurer 1; Annual Staff 1; FHA 2; Football Sweetheart 1; Tiger Tales 1; Class Officer 1, Reporter 1; Nurses' Club 2, Program Chairman 1; Photographers' Club 1; Senior Planning Committee.





## SENIORS

WERTZ, SANDRA C.

(Transfer from Lafayette, Ind.)

Junior Red Cross 1; Hi-Tri 2; Assembly Programs 2; Sunshine Society 1; FHA 3; Tiger Tales 1; Annual Staff 2; Science Club 1; Nurses' Club 1; Photographers' Club.



WILLIAMS, SHIRLEY JUNE

Band 4, Majorette 3; Stage Band 3; FHA 4; Tiger Tales 2; Annual Staff 2; Choral Club 2; Girls' State 1; Football Sweetheart 1; Assembly Programs 2; Exchange Assembly 1; Senior Planning Committee; Girls' Trio.

WHITLEY, MARTHA GRACE

(Transfer from Oak Ridge, Tennessee)

Nurses' Club 1; Pep Squad 2; Class Officer 2, Secretary 2; Volleyball 1; Softball 1; Student Council Representative 1; Science Club 1; FBLA 1; Assembly Programs 2; Glee Club 1.



FROM SEPTEMBER TO JUNE THEY DIRECTED US WELL.





SENIOR TRIP



JOEVA



SENIOR Play



Billy



Pimper



Ann



Gooch



Shirley



THE G.H. HARRIS Bunch



O.G. B.J.

JUNIORS 1955-56



SWEET 'N' PURTY



WHERE YA GOING?



WOW!



LAZY DAY



JUST A BURNIN' AROUND



LYNNA 'N' LAY

STAR GAZING?



JUDY LYNN



"JUNIE"



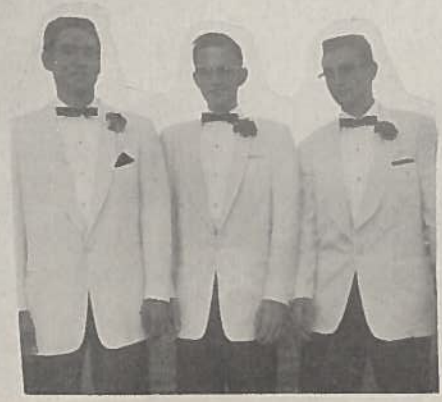
ME 'N' MY DOG



JODIE



"JERNIE"



THREE MOUSEKETEERS



JUNE QUE



FOOTBALL HERO!



WILLIAM LEO AND "ELSIE"



LIZ WILLIE



TRAVIS



# JUNIORS



OFFICERS, left to right: Peggy O'Neal, President; W. Lee Murray, Student Council; Barbara Goley, Vice President; Jodie Magness, Secretary and Treasurer; Gloria Skopek, Reporter; Nola Albrecht, Student Council.



SENIOR  
day



O.G.

2.J.



VA W' LAURA



JODIE



7 BALL  
ERO!



NOLA ALBRECHT

COURTNEY ARMSTRONG

BOBBY BARTLETT



CHARLES BATES

DOUGLAS BLACKMON

JOANN BLACKMON

## JUNIORS

Compliments of  
EADS FABRIC SHOP  
Rockdale, Texas

LYNNA BRANDON

ELAINE BRAUN

JAN BREDT



BILLY BUETOW

GARY DALE CROFT

FRANK CRUMP





YVONNE CRYER

JIM BOB DOBBS

WILLIAM DOCKALL



JO ANN DOSS

RUBY EDELMON

RUBEN GARCIA



## JUNIORS

Compliments of  
N. E. ALFORD



ALEX GARZA

BARBARA GOLEY

JANIE HAMMONDS



LAURA HENRY

ESTELLE HOBBS

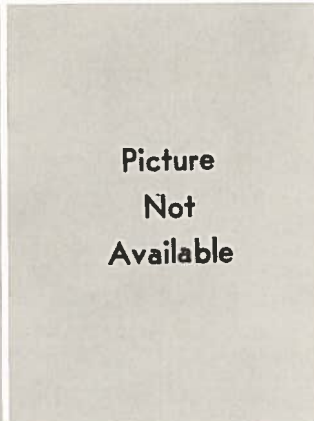
FRANK HYDER



GARY JACKSON

RUBY LEE JACKSON

DAN JENKINS



ALFIE JO JOHNSON

JUNE KIRCHENWITZ

WILMA KITCHING

## JUNIORS

Compliments of  
VILLAGE COURTS  
Mrs. Leana Dockall, Manager

JODIE MAGNESS

BECKY MAREK

PAT McQUERRY



JIM McQUERRY

ALPHA ANN MORTON

W. LEE MURRAY





DAVID MUSTON

PEGGY O'NEAL

POLLY ANN PERRY



BILLY POND

BILLY SAGER

GLORIA SKOPEK



## JUNIORS

Compliments of  
BACKHAUS BROTHERS GROCERY  
Rockdale, Texas



JOE STRELSKY

IRENE STRELSKY

SARA TODD



JUDY TOWERY

JIMMY DICK TUMA

WILFORD VON GONTEN



TRAVIS WALKER

LARRY WELLS

EDNA FAYE WENZEL



LAVADA WENZEL

DOROTHY WEISE

DONALD WHITELEY

## JUNIORS

Compliments of  
C. W. MOEHRING INSURANCE  
Rockdale, Texas

MARY F. WILLIAMS

JOAN WILLIAMS

JOHN TERRY YOAKUM



LEE YOUNG

JUNE KIRCHENWITZ

Meeting the first  
"deadline"





# SOPHOMORES



OFFICERS, left to right: Richard Kirkpatrick, Student Council; Charlene Holden, Student Council; Wayne Kyle, Reporter; Rebecca Skopek, Secretary and Treasurer; Joan Cogbill, Vice President; Mike Height, President.

# SOPHOMORES



Linda Barmore

Jimmy Baxter



Harold Brooks

Billy Joe Brown



Bessie Buetow

Joan Cogbill

Robert Crump



Peggy Dameron

Sondra DeLaney

James Doss



Mildred Doss

Hartense Ellison

Jesse Fowler



Linda Graham

Bonnie Gray

Joe Lynn Grubbs



# SOPHOMORES

Martha Hairston

Ginger Harriss



Edgar Lee Henry

Mike Hight



Charlene Holden

Lloyd Lee Holton

Jimmy Horton



Douglas Irby

Frances Ann Key

Billy Jack Kirkpatrick



Richard Kirkpatrick

Wilma Kirkpatrick

Wayne Kyle



Barbara Lamb

La Verne Lamb

Kirby Owens



Compliments of B & A GARAGE  
Auto Parts

# SOPHOMORES

Hobart Payne

Becky Reynolds

Errol Robinson

Margaret Scaff

Ernest Schlemmer

Robert Simmons

Rebecca Skopek

Jo Ann Smith

Betty Stephens

Kathy Tice

Johnny Timmerman

Joyce Tuma

Charlotte Urban

Wilbert Wanoreck

Duane Williams

Virginia Wilson

Zekie Young

Jackie Yount



# FRESHMEN



## OFFICERS

Left to right: Bobby Bounds, Student Council; Bruce Holliman, President; Mary Ann Tunnell, Student Council; Dorothea Parker, Secretary; Linda Gebhart, Treasurer; Jeff Rodes, Vice President.

# FRESHMEN



Beatrice Alonzo  
Lanier Angell  
Lou Ann Baggerly  
Betty Jo Barker



Jimmy Bartlett  
Joe Bartlett  
Rodney Boswell  
Bobby Bounds



Mary Jo Burks  
Dorothy Cardwell  
J.D. Cloud  
Jerry Cogbill



Ronnie Cummings  
Jackie Currey  
Sandra Doss  
Mary Downey



Ann Dyer  
Joyce Dyer  
Shirley Dyer  
Vernon Dymke



# FRESHMEN

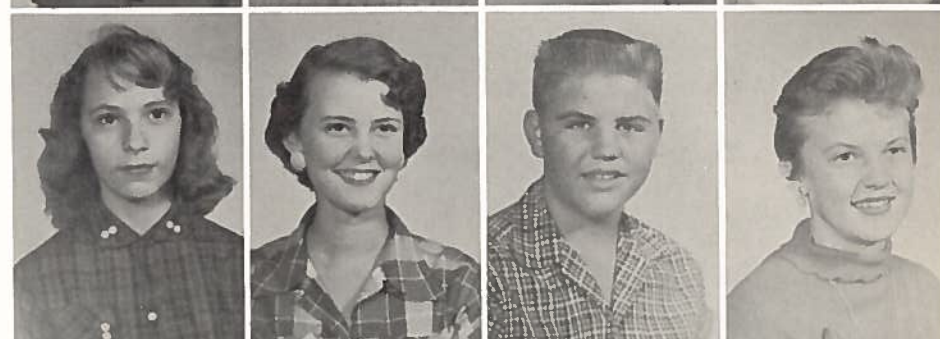
Edwin Freeman  
Fernando Garcia  
Linda Gebhart  
Dean Goodrum



Jonell Grabener  
Bobby Hanks  
Leanna Harris  
Mary Alice Head



Sharon Hodges  
Sondra Higginbotham  
Bruce Holliman  
Mary Holliman



Carol Holsonback  
Jack Hubert  
Paul Jenkins  
Robert Jenkins



Etta K. Keeble  
Leonard Kubiak  
Amanda Kyle  
Jane Landis



# FRESHMEN



Charlotte Laurence  
Wayne Loftin  
James Lyles  
Rita Magness



Floyd McCoy  
Tommie McMillian  
Julienne Miller  
Mitchel Moore



Johnny Moorman  
Matilde Munoz  
Dorotha Parker  
Bill Parrish



Pat Patterson  
Joe Mark Payne  
Betty Pelzel  
Mary Praesel



Nancy Lee Rae  
Jeff Rhodes  
Dannie Robbins  
Sardal Ross



# FRESHMEN

Mickie Dell Dunbar  
T.J. Kell  
Patsy Overturff



Lannie Sager  
John Schlemmer  
Bill Scurlock  
Janice Smith



Hal Stanislaw  
Billy Strelsky  
Shirley Suttles  
Mary Ann Tunnell



Lonnie Urban  
John Wayne Walker  
Judy Ann Walker  
Doyle Wendland



Carolyn Westbrook  
Peter Whelan  
Gene White  
Michael Whiteley



Vivian Williams  
Janice Wilmoski  
Wilbur Yakesch  
Delbert Yarbrough





# Sophomore Snapshots



HUH?



HE-MAN



PALS



HAPPY TIMES



GAIN



ANNIE OAKLEY



THINK!



WHAT YA' PLAYING BOYS?

WELL!?



WATCH IT!



BATHING BEAUTY?

# FRESHMAN Snapshots



FRESHMAN  
GOOD  
CITIZENS



WANTED



FRESHMAN  
King & Queen



Johnny Haggis



# EIGHTH GRADE

Ahrendt, Sondra  
Aldama, Alicia  
Anderson, Larry  
Angell, Lamar

Baker, Bobbie  
Bella, Gilbert  
Bella, Julia  
Bella, Mary Lou

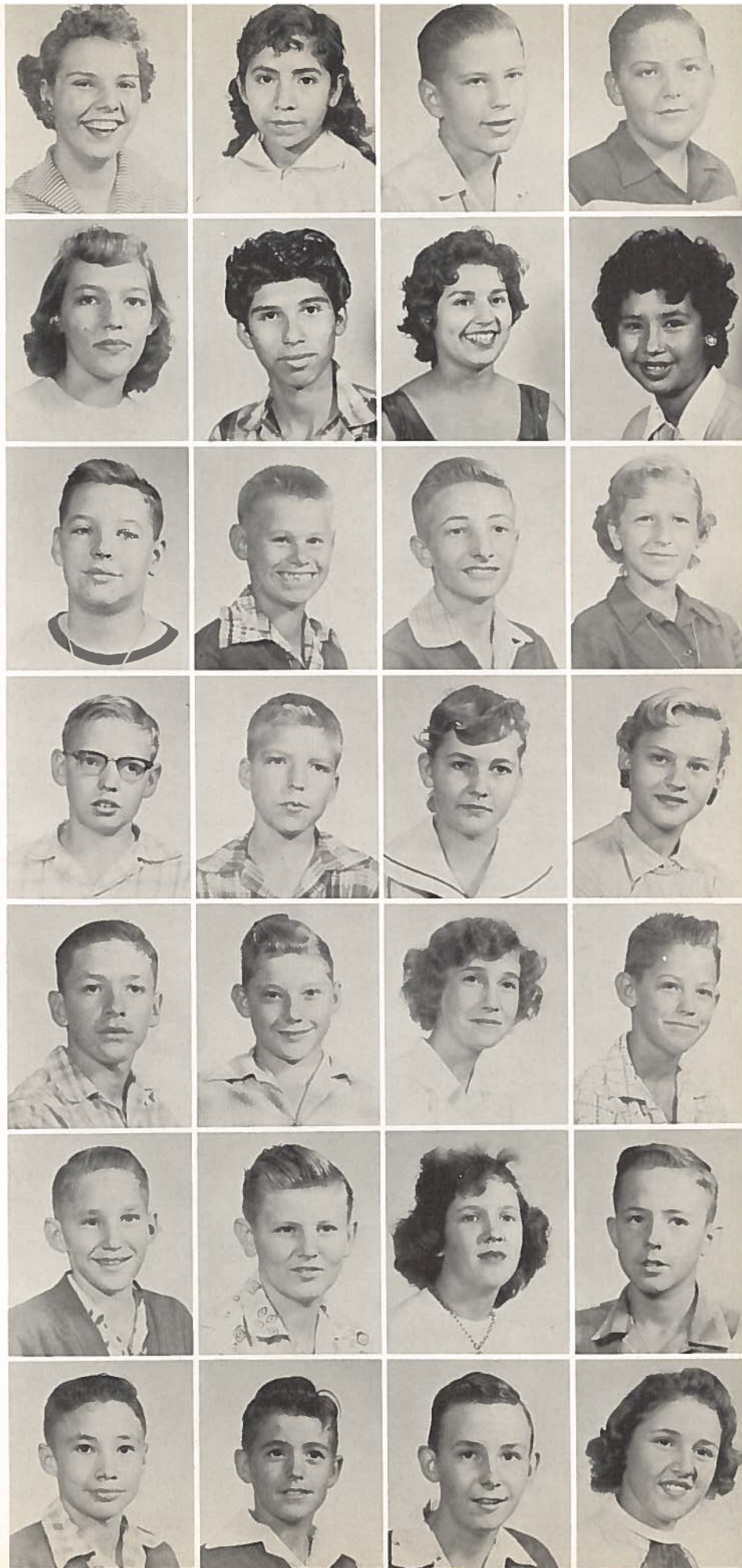
Bishop, Ocie  
Buetow, Larry  
Cain, Doug  
Calhoun, Janice

Calloway, Ben  
Carter, Delton  
Carter, Shannon  
Caywood, Shirley

Cotton, Condale  
Croft, Stephen  
Dameron, Carolyn  
Davenport, Larry

Edmond, Bobby  
Ellis, Leroy  
Fincher, Carolyn  
Gatewood, Hyman

Goodman, William  
Grabner, Thomas  
Griffith, Richard  
Grubbs, Polly





## EIGHTH GRADE



Hammonds, Cecil  
Holliman, Harvey  
Jiminez, Vincento  
Jones, Wyatt



Kight, Cliff  
King, Barbara  
Kirby, Clara  
Knight, Andy



Koehler, Norma  
Kyle, Kay  
Marshall, Grace  
McClendon, George



Menn, Patsy  
Moehring, John  
Munoz, Doris  
Murry, Thomas



Mushinski, Barbara  
Morton, Quinton  
Nickols, Gail  
Phillips, Larry



Richards, Mary  
Roberts, Barbara  
Rogers, Benny  
Rogers, Joe



Rodgers, Richard  
Rutherford, Gloria  
Sales, Gary  
Seago, Donald



EIGHTH GRADE

Sides, Bobby  
Springer, Wynne  
Strelsky, Duane  
Swearingen, Philip



Tovar, Julian  
Tovar, Lorenzo  
Tucker, Evelyn  
Valverde, Roberto



West, Violet  
White, Annice  
Whitely, Clifford  
Wiley, Nolie B.



Willard, Glen  
Wilson, James  
Yoakum, Cynthia  
Young, Carolyn



Zapata, Simon



Compliments of RICHARDS' CLINIC



EIGHTH GRADE



SEVENTH GRADE



## SEVENTH GRAD

Allen, Margaret  
Anderson, Karl  
Bacus, Elsie  
Barker, Janice

Bartlett, Melba  
Baxter, Nelly  
Beard, Geneva  
Bland, Nolan

Boyer, Robert  
Brooks, Terry  
Brown, Shirley  
Burns, Charles

Carter, Cynthia  
Carr, Melody  
Cleveland, Gerald  
Crow, John

Ditmar, Glenna  
Downey, Jack  
Doss, Barbara  
Doss, Gloria

Doss, Lottie  
Dyer, Joan  
Ellis, Sally  
Ellison, Hugo

Estepp, Betty Joyce  
Freeman, Windall  
Fritz, Weldon  
Fuchs, Bruce





# GRADE

## SEVENTH GRADE

Gatewood, Carrol  
Gebhart, Johnny  
Godfrey, Peggy  
Goehler, Janice



Gross, Dub  
Hall, Linda  
Hammonds, Arthur  
Hansen, Gail



Harriss, Bobby  
Head, Jane  
Hobson, Perry  
Holten, Shirley



Hubert, Margaret  
Jacob, Wilford  
Jacob, William  
Johnson, Imogene



Jones, Anita  
Jones, Joyce  
Jordon, Charlene  
Joseph, Barbara



Juarez, Elisa  
King, Billy  
Kubiak, Jean  
Lamb, Cora



Lamb, Willyne  
Laurence, Ronnie  
Leggs, James  
Longmire, Jill



## SEVENTH GRADE



Lumpkins, Judy  
McClendon, Joan  
McMillian, Willie  
McNeil, Sam



McNeil, Thomas  
McQuarry, Bill  
Miner, Derewood  
Moody, Wallace "Nig"



Morton, James  
Munoz, Al Dora  
Munoz, Jovita  
Muston, Shirley



Newman, La Veda  
Parrish, Rena  
Parrish, Ronnie  
Pimpler, Barbara



Reynolds, Sally  
Rosenquest, Nancy  
Pope, Jackie Sue  
Rinn, John Robert



Roscoe, Patsy  
Sales, Geraldine  
Sefcik, Marie  
Simpson, Donnie



Southerland, Rena  
Stricker, Doris  
Summers, Mary  
Sutton, Mary Frances



# SEVENTH GRADE

Sutton, Morris  
Thompson, Cynthia  
Tice, Butch  
Urban, Dannie

Wade, Clifton  
Wells, Ted Roy  
Wertz, Danny  
White, Gilbert

Layton, Kathryn  
Stephens, Anna  
Sullivan, Jeannine  
Tovar, Albert



Yezak, Daniel



JOVITA ALICE MUNOZ  
SIMON ZAPATA  
Spanish Dancers  
in  
"Texas, Under Six Flags"

Compliments of EAST TEXAS LUMBER CO., WILLIE WILLIAMS, Manager  
Rockdale, Texas





Polly Grubbs, Willyne Lamb, Joan McClendon,  
Shirley Caywood, Anise White.



Carolyn Young, Nichol Dyer, Mary Richards,  
Diana Whiteley, Cynthia Yoakum.



JUNIOR HIGH PEP SQUAD



JUNIOR HIGH BASKETBALL



Birchfield, Leirman, Miller, Laurence.



## SIXTH GRADE

Barbara Adams  
Lucinda Bela  
Joyce Chapman  
Nickol Dyer  
Joyce Dymke



Virginia Flores  
Mary Helen Garza  
Barbara Greenwood  
Patricia Hart  
Margie Jenkins



Sophie Jiminez  
Ila Mae Kyle  
Lynn Lequire  
Deliah Mendoza  
Stella Munoz



Cecilia Owens  
Fred Parker  
Joseph Randall  
Ann Staffelback  
Ann Strelsky



Peggy Seelke  
Sherry Sutton  
Horatis Tovar  
Bonnie Tucker  
Romanita Valverde



Bill Waldrop  
Travis West  
Shirley West  
Linda Sue Williams  
Jeanne Wilson



ichards,

rence.



## SIXTH GRADE

Tommy Moore  
Diana Whitely  
Barbara Yarbrough  
Rita Albrecht  
Joseph Carr



Patrick Curtis  
Jerry Downey  
Frank Dymke  
Robert Edwards  
John Franklin



Sharon Haelbig  
Bill Hanks  
Jimmy Head  
Lee Jenkins  
Edwards Jones



Gordon Jones  
Donnie Laurence  
Charles McCoy  
David McKinnon  
L.K. McNiel



Peggy Mehaffey  
Garry Mize  
Larry Mize  
Ronnie Nelson  
Collier Perry



Rob Peterson  
John Richards  
Michael Rolan  
Teddy Sager  
Dan Scurlock





## SIXTH GRADE



Johnny Sefcik  
Larry Smith  
Billy Walker  
Leon Wenzel  
Nicasio Zapata



Barbara Allen  
Laura Arnold  
Edward Baca  
Van Clinard  
Gerald Criddle



Ernestine Deonda  
Shirley Dockall  
Howard Dunbar  
Manuel Garcia  
Bettie Greenwood



Patricia Guthrie  
Jaye Holliman  
Clint Key  
Ann Kyle  
Carlos Martinez



Mary Helen Masiel  
Janie Munoz  
Lucio Munoz  
Mary Ann Mirelles  
Gayle McCoy

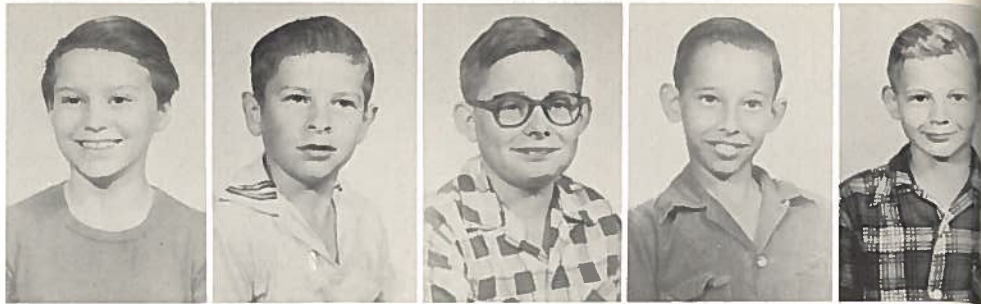


Harry Lee Ormsby  
Bennie Pounders  
Fred Pugh  
Kenneth Rae  
Sherrlyn Sexton



## SIXTH GRADE

Carol Speer  
Ray Starr  
Meredith Stokes  
Clarence Vanzandt  
Steve Van Cleave



Bill Terrell  
Kathy Arrington



## FIFTH GRADE

Ronnie Brannon  
Patricia Ann Brockenbush  
Jimmy Burgess  
Paul Freeman  
Jerry Holson



Benny King  
Wayne Kirkfield  
Linda Kneeland  
Alexandria Martinez  
Jimmy McDaniel



Mary Ellen McQuinn  
Norma Jean Merryman  
Jeanne Elizabeth Moehring  
Paul Nabors  
Thomas Wayne Owens





# FIFTH GRADE



Billy Pate  
Tom Pearson  
Bobby Pond  
Linda Schlottman  
Preston Solomon



Edwin Voss  
Candace Wallace  
George Denson Weems  
Betty Kay Wells  
Jimmie Baugh



Joe Doug Blackburn  
Jay Carter  
Cheryl Carr  
James Craddock  
Margie Crump



Darleen Cumbie  
Robert Cummings  
Helen Dittmar  
Lola Dymke  
Janice Ellis



Mary Bess Greenwood  
Frank Haley  
Harold Jones  
James Lamb  
Pamela Love



Larry Nichols  
Judi Neie  
Luis Nieto  
Kenneth Parker  
John J. Parmelee, Jr.





## FIFTH GRADE

Clifford Rasco  
Patricia Rutherford  
Richard Sullivan  
Martha Toole  
Mary Toole



Virginia Woods  
Juan Juarez  
Victoria Innoncencio  
Karen Anderson  
Christine Baccus



Joy Blackmon  
Danney Burks  
Rudy Castanedo  
Elizabeth Diver  
Kathryn Green



Pat Hight  
Edward Hubert  
Jim Killen  
Clint Kent  
Marty Lowe



Dorothy McMillian  
Linda Miller  
Mike Mattingly  
Eddie J. Muston  
Evelyn Payne



Olivia Martin  
Rosa Martinez  
Gregg Ross  
James Schlemmer  
Ronald Selke





## FIFTH GRADE

Mary Alvarado  
Rosa Linda Carbajal  
Inmael Bela  
Estell Cotton  
Judy Dolan



Nancy Taylor  
Lynne Tyler  
Ben Vatverde  
Rose Wezerek  
Etolia Williams



Richard Wykes  
Jimmy York  
Jean Zezulka



## FOURTH GRADE

Compliments of  
HODGE'S CLEANERS and MAN'S SHOP  
217 N. Main Hi-6-5091

Nathan Baker  
Rebecca Barclay  
Carolyn Barker  
Barbara Baxter  
Robert Braun



Patricia Brickey  
Mary Bela  
A.W. Butts, Jr.  
Howe King Clark  
Milton Copeland



# FOURTH GRADE

Ruby Currey  
Cheryle Dyer  
Judy Dyer  
June Dyer



Bill Dean Franklin  
Michael Fritz  
Jerrienne Fuller  
Betty Hammonds



Billy Hansen  
Rosalee Hoffman  
Marie Holton  
Robert Jenkins



Carolyn Kent  
L.B. Kubiak  
Ernie Laurence  
George Martinez



Bobby Melcher  
Billy Ogea  
Nancy Faye Oldham  
Florance Stork



Melvin Smith  
Tom Slaughter  
Johnny Prasel  
Diane Caraway



Marsha Croft  
Donavan Cumbie  
Billy Dittmar  
Manuel Garza



Yvonne Gandy  
Eugene Grubbs  
John Harris  
Garland Holley



Compliments of THE MAFIAR  
Rockdale, Texas



# FOURTH GRADE

Gary Holliman  
Larry Jackson  
Michael Liles  
Patricia Manning

Fred Marshall  
Joe Martinez  
Gordon Mathews  
Ronny Menn

Carl Moody  
Amon Muston  
Glenda Parker  
Nelda Rogers

Kenley Schroeder  
Brenda Speer  
Dickie Summers  
Roger Don Taylor

Mary Sue Thompson  
Jackie Watkins  
John Michael Weed, III  
Diane Weems

Flora White  
Janet Whitman  
Janis Yezak  
Gene Yokley

Donna York  
Jack Zercher  
David Baca  
Polly Boggus

Kathy Carter  
James Cogan  
Peggy Cogbill  
David Dalton



# FOURTH GRADE

Brenda Dolan  
Ronny Finch  
Victor Frysinger  
Sarah Gary



Roy Hammond  
David Henry  
Johnny Hirt  
Peggy Ann Huey



Nell Johnson  
Linda Keen  
Robert Liber  
Delores Masiel



Lupe Marienz  
Lois Mata  
Johnnielyn McKinney  
Alfred Moore



Ernest Munoz  
Dolores Munoz  
Eleanor Newton  
Guillermina Nieto



Ruben Nieto  
Mary Nořak  
Bob Parker  
Gerry Phillips



Ginger Romine  
William Seelke  
Darlene Sexton  
Stepnanie Stiborik



Barbara Thompson  
Sheron Thweat  
Robert Urban  
Epifania Zapata





## FOURTH GRADE

John Charles Yelverton



## THIRD GRADE

Sections A, B, C, and D

Larry Don Allen  
Terry Armstrong  
Darwin Avrett  
Linda Baxter



Edward Lee Bowman  
Robert Carter  
Sharon Carnes  
Sherman Davis



Glen Dyer  
Wenda Jo Dyer  
Patty Erwin  
John Fimian



Gayle Guilliame  
Lewis Head  
Stephen Hubert  
Barbara Jackson



Claudette Jackson  
David Killen  
Eddy Joe King  
Larry Kyle



Billy Wayne Little  
Jerry Maines  
Kay McFarland  
John Wayne Morton



# THIRD GRADE

Judy Moseley  
La Nelle Patranella  
Jenny Kay Perry  
Richard Praesel



Virginia Starr  
Janice Stewart  
Tommy Thompson  
Stanley Von Gonton



Ronald Wendland  
Bobby Yoakum  
Adelia Zapata  
Candy Blackburn



David Boyer  
Joan Gail Brannon  
Bill Brumbelow  
Donna Christian



Paul Cruz  
Tim Curtis  
Wilburn Dyer  
Marvin Evans



Walter Guillaume  
Royce Lee Harwell  
Gary Hornbeck  
Bob Jones



Gayle Jones  
Rena Kelly  
Steve Lamb  
David Ray Legg



Barbara Leshikar  
Cheryl Lewis  
Linda Lewis  
Shirley Ann McIrvin





# THIRD GRADE

Jimmy Moore  
David Nabors  
Mike Neidigh  
Jan Parmelee

Billy Rogers  
Jerry Lee Southerland  
Jimmy Lou Southerland  
Shirley Southern

Stephen Tucker  
Rodney West  
Beth Whiteley  
Donna Whiteley

Douglas Young  
Bonnie Armstrong  
Nedro Bartlett  
James Bland

Jerry Caywood  
Rosemary Cumbie  
John Curik  
Clarence Wayne Diver

Glynda Emery  
Wayne Goodman  
James Robert Greenwood  
Dale Henry

Carolyn Ireland  
Tommy Jenkins  
Jimmy Jones  
Patsy Jones

Susie Kammon  
Donald Wayne Mather  
Joe Maraga



Compliments of THE DAILY QUEEN



# THIRD GRADE

Nancy Lin Mehaffey  
Cheri Lee McGlothlin  
Janice McMillian  
Johnny Morton



Copie Perry  
Anna Marian Pontruff  
Bobby Remaley  
Dolores Robinson



Linda Smith  
Judy Ann Summers  
Jodie Tucker  
Francine Turner



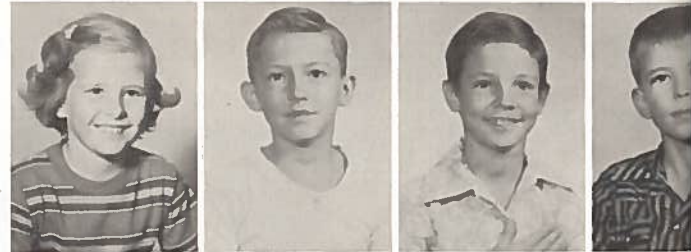
Candelarie Valverde  
Wayne Vaskamp  
Jane Wilkerson  
Paul Adams



Sue Bennett  
Glenda Burgin  
Leroy Cain  
Ronald Caywood



Wanda Clark  
Coy Doss  
Billy Downey  
Larry Dunbar



Rudolph Flores  
Danny Gage  
Keen Greenwood  
Tommy Grubbs



Don Hillis  
Dennis Hirt  
Sheila Holamon  
Judith Holmes





## THIRD GRADE

Clark Holsonback  
 Ronald Johnson  
 John Jones  
 Donald Keeble

Linda Kell  
 Marc Kunz  
 Linda McCoy  
 James Melcher

Irvin Muston  
 Paula Pope  
 Johnny Pruett  
 Julie Reynolds

Connie Roberson  
 Mike Scarbrough  
 Dwayne Schuessler  
 Charlotte Shriver

Dolores Sonntag  
 Camilia Tyus  
 Roy Waldrop  
 Anna Lois Yakesch



## SECOND GRADE

Catherine Alexander  
 Lillian Alonzo  
 Betty Anderson  
 Kathryn Austin

Jesus Baca  
 Linda Backhaus  
 Ann Bailey  
 Jerry Bauman





## SECOND GRADE

Jerry Biehle  
Cheryl Botts  
Lois Bowman  
Dierdre Brasher  
Jessie Baggerly



Shirley Brockenbush  
Rickey Brockenbush  
Donna Chapman  
Ken Clark  
Charles Currey



Leslie Davenport  
Charles Diver  
Ricky Doss  
Martha Downey  
Elizzbeth Evans



Fernando Flores  
David Franklin  
Becky Fuller  
Joyce Gary  
Robert Garza



Judy Gatewood  
Cochran Green  
Wanda Hammonds  
Brenda Haupt  
Gayle Green



Timothy Hawkins  
Twyla Hord  
James Holsonback  
Jackie House  
Ronnie Hubert



James Hoskins  
Laura Hurst  
Jimmy Hirt  
Barbara Jackson  
Charles Jacobs





## SECOND GRADE

Linda Gayle Jones  
Robert Jones  
Vicki Jones  
James Keen  
Glenna Keen



James King  
Douglas Kirk  
Jimmy Knight  
Glenda Knott  
Sue Kyle



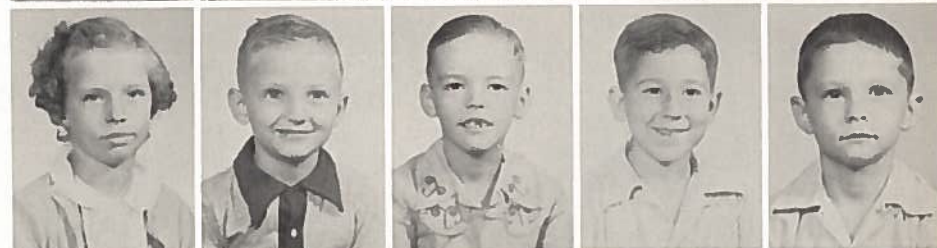
Nancy Lands  
Donna Leber  
Gary Langford  
Brenda Lea Law  
Janice McVoy



Frankie Mireles  
Bobby Moorman  
Johnny Moran  
Steven Moran  
Janice Musten



Linda Muston  
Johnnie Neiman  
Roy Lee Musten  
James Nelson  
George Norman



Sharon Orr  
Linda Owens  
James Parker  
Evelyn Pearson  
Bobby Pelzel



Emmet Perry  
Sheila Perry  
Rebecca Peterson  
Vicki Philippus  
Sue Petty





## SECOND GRADE

Clarence Pontruff  
Elizabeth Pounders  
Carolyn Rasco  
Julia Raymond  
Robert Sanchez



Judy Sapp  
Danny Schulz  
Kathie Self  
Linda Silvey  
Charles Servantez



Gayle Shelnut  
Nickie Shelton  
Dick Sims  
Waune Soloman  
Paul Sonntag



John Stewart  
Dean Stiles  
Linwood Stork  
Gail Thompson  
Tanya Thweatt



Tommy Thweatt  
Linda Tindall  
Marlene Treadwell  
Linda Jo Todd  
Gerald Toole



Patsy Tyler  
Eddie Urban  
Jesus Valverde  
Gary Walker  
Ronnie Joe Wallace



Charles Wertz  
Glen West  
Lou White  
Kenneth Whitmire  
Ronald Wiley





## SECOND GRADE

Jannie Williams  
Nancy Ann Williams  
Ronald Williams  
Charles Yoakum  
Marcia Yokley



Mary Young  
James Roy Young  
Estaban Zapata  
Beverly DeVille



## FIRST GRADE

Sections A-B-C-D-E

Virginia Zamora  
1-E



Jim Alexander  
Linda Alexander  
Joe Baugh  
June Boswell  
Jama Burns



Joe Wayne Cleveland  
Ronald Dalton  
Alice DuBose  
Sharon Dyer  
Marshall Enquist



Willard Frysinger  
Melba Garza  
Rhonda Greer  
Dennie Harbour  
Ernestine Hoffmeyer



Andy Jackson  
Brenda Ledger  
Paul Manning  
Carolyn Mills  
Armoret McLellan





# FIRST GRADE

Robbie Roberson  
George Samford  
Harold Steel  
Quincy Tuckness  
Bob Walton



Debbie Watkins  
Patricia Ann Buetow  
Linda Kay Barclay  
Michael Allen Brannon  
Nolan Pat Doss



Thomas Charles Doss  
Peggy Ann Davenport  
Tommy Eanes  
Patricia Ann Eiland  
William Fincher



Edward Lawrence Garcia  
Pamela Ann Haupt  
Philip Koster Jones  
Dennis Wayne Klick  
Jack Anthis Kyle, Jr.



Phyllis Jean Lightsey  
Jack Aaron Martine  
Robert Cecil McIrvin  
Susan Ann McKinney  
Sharon Marie Patranella



Linda Kay Rogers  
Tommy Timmerman  
Janice Marie Tindall  
H. Spencer Woods, IV  
Finnis Ray Ross



Clifton A. Wall  
Louis Bowman  
Linda Dale Collins  
Byron Cook  
Thomas Currey





# FIRST GRADE



Michael Davenport  
Renee Fimian  
Felix Flores  
Timothy Goebel  
Harold Hall



Herminio Hernandez  
Brian Hill  
Kay McCoy  
Peggy Melcher  
Carolyn Napper



Richard Norman  
Curtis Parsons  
Randy Russell  
Clara Schneebeil  
Rebecca Nabors



Linda Seelke  
Michael Sims  
Jimmy Speer  
Andy Stowe  
Marilyn Thomas



Rodrick Wenger  
Bobby Jean Baxter  
Mickey Lucille Brannam  
Susan Mary Curtis  
Larry Wright Dameron



Dan Fischer  
Freddie Flores  
Micario Flores, Jr.  
Billy Wayne Jenkins  
Rose Mary Jones



Hurschal James Joseph  
Judy Rae Killion  
Debora Gail Lessikar  
Danny Lewis  
Dorothy Elaine Martin





# FIRST GRADE

Ethel Mae Busby  
Karen Taylor



Patricia Moore  
Carol Ann Moran  
Elaine Parker  
Richard Bruce Rombough  
Betty Joyce Sapp



Delores Sanchez  
Stella Louise Seelke  
Patsy Lou Stephens  
Endelia Serroto  
Mary Ann Strelsky



Gary Wrenn White  
Dennis Ray Willard  
Wayne Bennet  
Wayne Block  
Gail Blackmon



Barbara Brickey  
Johnnie Cochran  
Linda Dowhey  
David Hodges  
Wayne Holliman



Olen Holliman  
Janice Kent  
Gerald Lands  
Kathleen Lester  
Frank Novonty



Patsy Owens  
John Redwine  
Joynell Roane  
Jimmie Sefcik  
Freeman Suttles

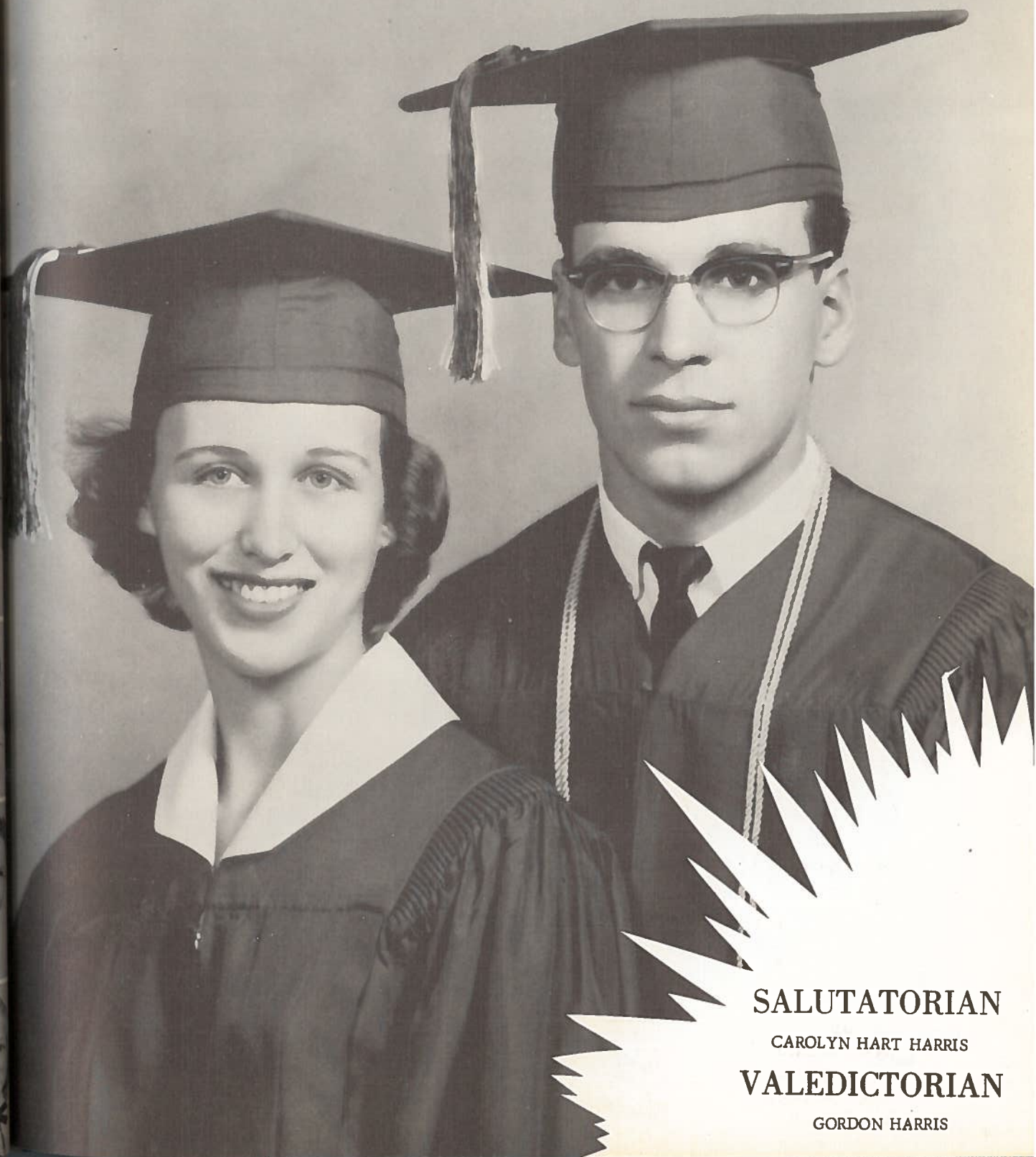


Pat Todd  
Jackie Wallace  
Donnie Wezerek  
Calvin Whiteley  
Sandra Woods





# PERSONALITIES



**SALUTATORIAN**

CAROLYN HART HARRIS

**VALEDICTORIAN**

GORDON HARRIS



MR. R.H.S.

BILLY JOE HALL  
Senior





MISS R.H.S.

MARILYN GOEHLER  
Senior

## SENIORS

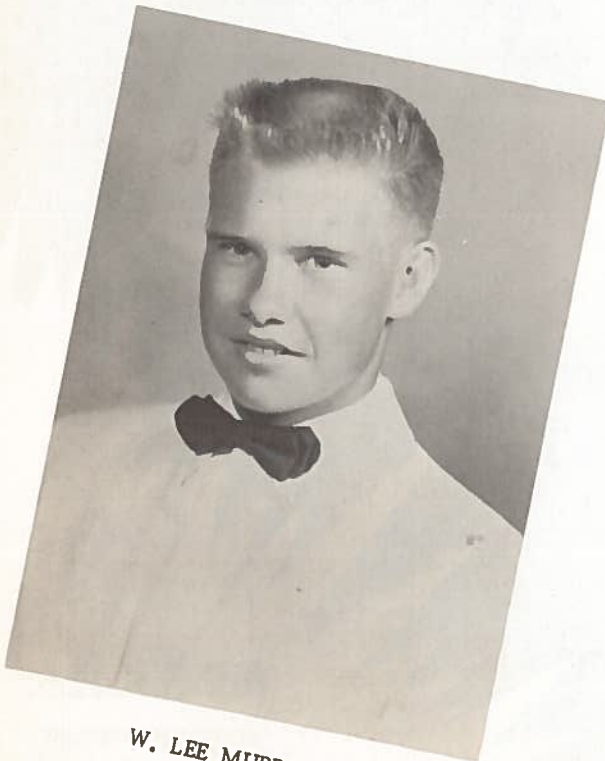


BILLY JOE HALL



MARILYN GOEHLER

## CLASS FAVORITES 1955-56



W. LEE MURRAY



NOLA ALBRECHT

## JUNIORS



## SOPHOMORES

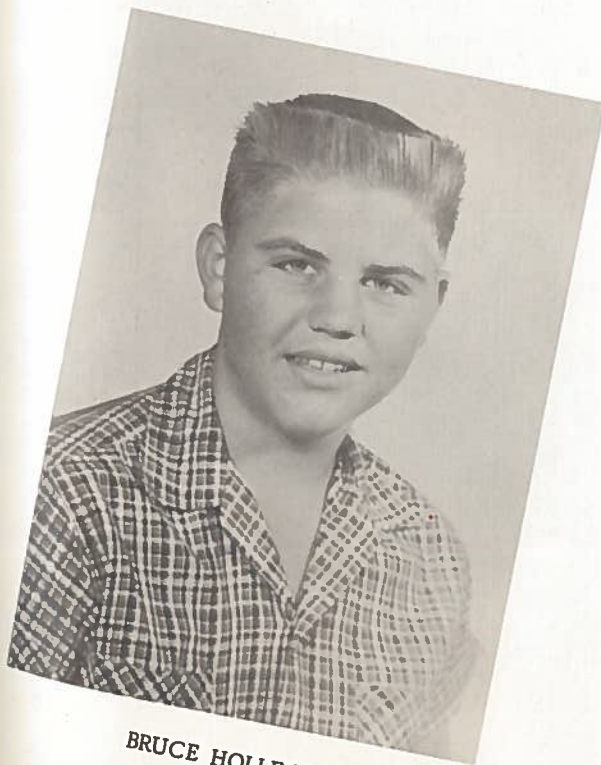


RICHARD KIRKPATRICK



GINGER HARRISS

## CLASS FAVORITES 1955-56



BRUCE HOLLIMAN



JANICE SMITH

## FRESHMEN

## BEST-LOOKING



MARGIE LUCKEY  
Senior

JACK LANDS  
Senior



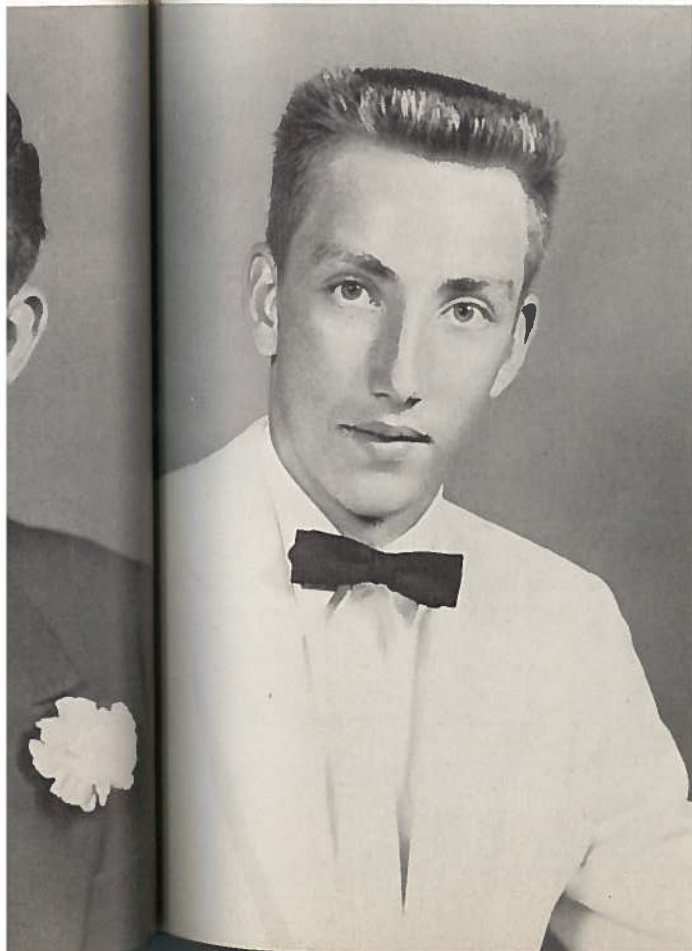


MOST LIKELY TO SUCCEED  
IN THE SENIOR CLASS

CORA SUE CAFFEY



DUKE TUNNELL



## POSTURE QUEEN

GLORIA SKOPEK, Posture  
Queen, crowned by J. M.  
Moorman, Superintendent



AMANDA LOU KYLE, third place,  
GLORIA SKOPEK, first place,  
J. M. MOORMAN, Superintendent,  
EDNA WENZEL, second place.

Compliments of  
B AND B STUDIO  
Rockdale and Cameron





BAND SWEETHEART

BABS TYLER



ESCORT

BILLY SAGER





## MOST ATHLETIC

SUE RUTHERFORD

EDWARD GRUBBS



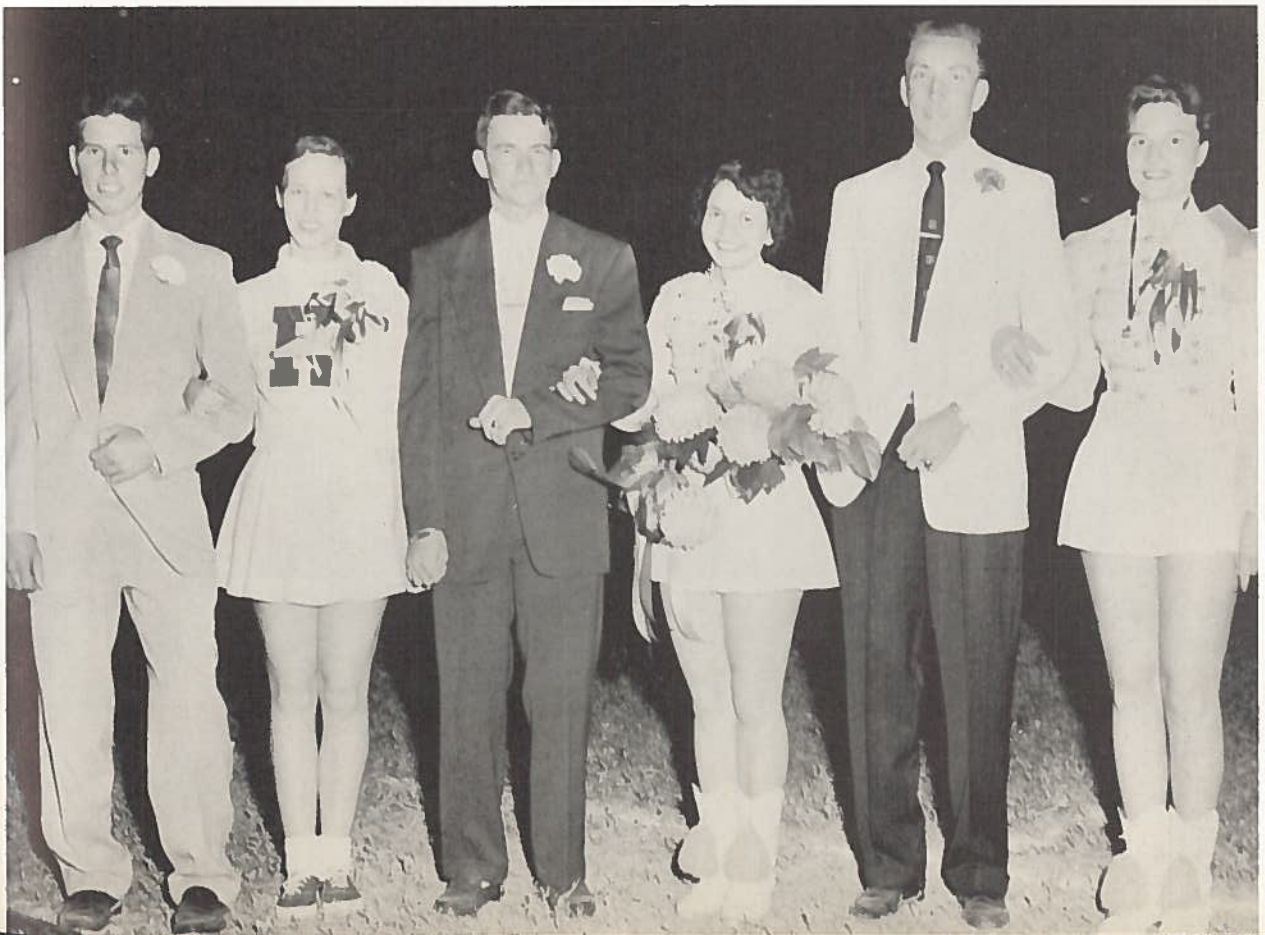
## FOOTBALL SWEETHEART



SHIRLEY WILLIAMS, Sweetheart;  
EDWARD GRUBBS, HENRY ELLISON,  
Captains.

## NOMINEES AND ESCORTS

Billy Buetow, Carolyn Harris, Jack Lands,  
Shirley Williams, Duke Tunnell, Joeva Wenzel.





## ROTARY QUEEN

GINGER HARRISS, Queen

## QUEEN, NOMINEES, AND ESCORTS





## HALL OF FAME



Coffield Award  
BILLY JOE HALL



Marjorie Award  
LOIS ANN BRAUN

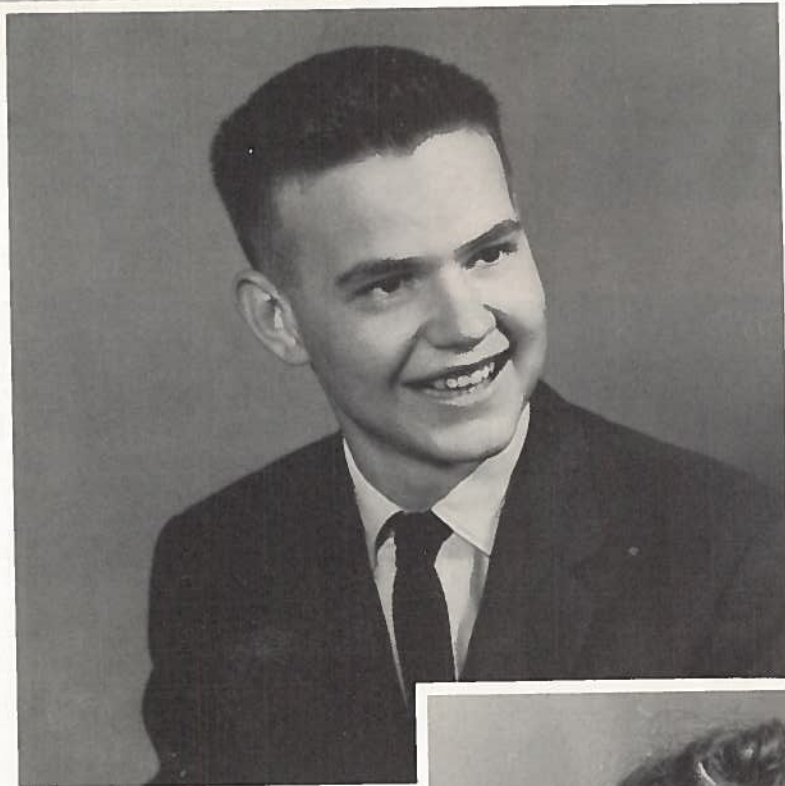


### BAND LETTERMEN

Left to right: Nola Albrecht, Johnny Harriss, Gayle Fuller, Billy Sager, Babs Tyler, John Elbert Fischer, Lavada Wenzel, Margie Luckey, Shirley Williams, Peggy Bounds, Joeva Yvette Wenzel, Gordon Harris, Joann Blackmon, Courtney Armstrong.



CORA SUE CAFFEY  
DAR Winner



JOHNNY HARRISS  
Rotary Award



GLORIA SKOPEK  
Girls' State  
Representative  
and Rotary Award





WINNERS OF VARIOUS AWARDS



#### CITIZENSHIP AWARDS

Back row: Mike Hight, Richard Kirkpatrick, Billy Jo Hall, Dale Croft. Front row: Dottie Parker, Rebecca Skopek, Edna Wenzel, Margie Luckey.

#### INTERSCHOLASTIC LEAGUE MEMBERS

Back row: Billye Shelton, Gordon Harris, Dorothy Greenwood. Front row: Lois Braun, Edna Wenzel, Carolyn Harris, Lee Ida Holliman.







## TRACK

EDWARD GRUBBS--District and Regional winner in High and Low Hurdles, and Broad Jump.

JOHNNY TIMMERMAN--District winner in Shot-put.

LEE YOUNG--District winner in High Jump.

In Remembrance of the Rockdale Reporter for its services.



# SPORTS



ner in

hot-put.

for its



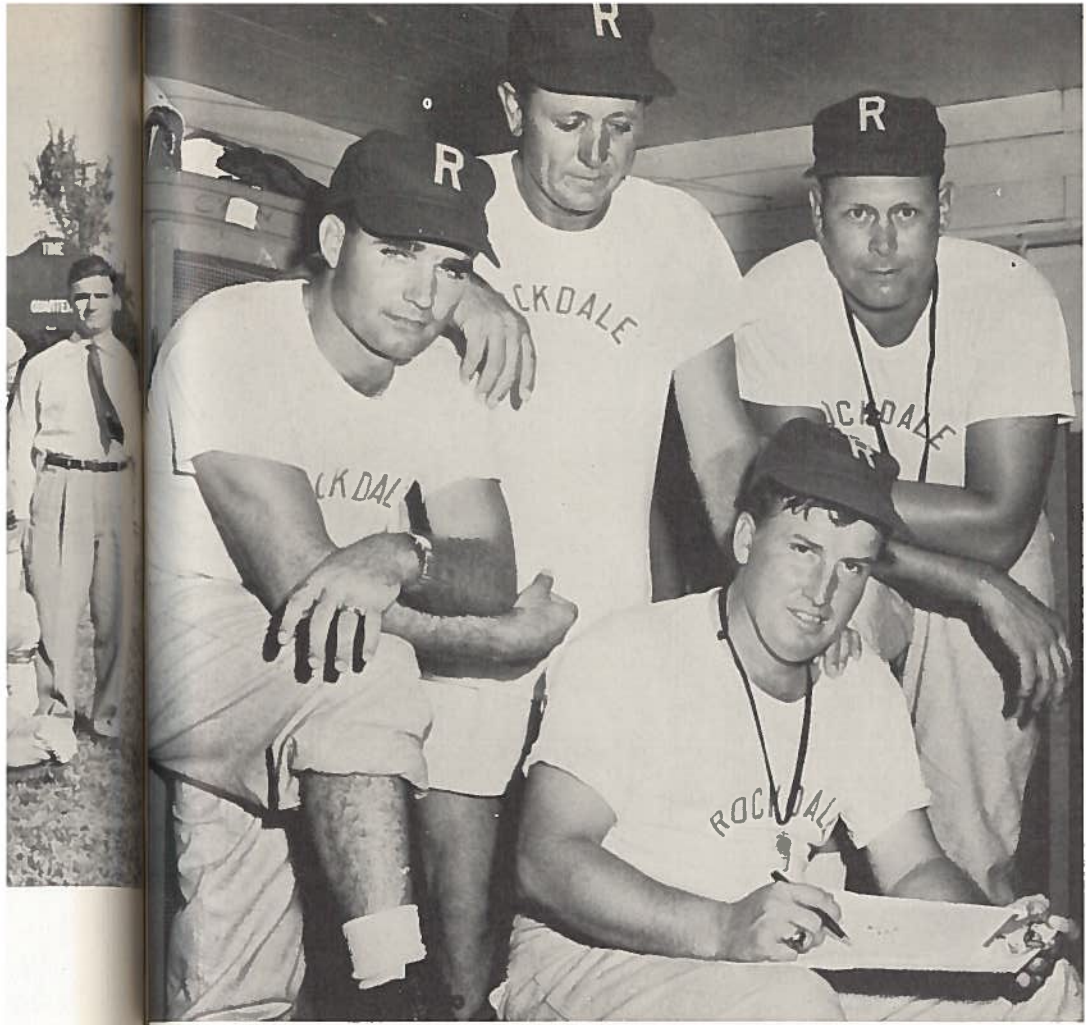


## WE FOLLOW THE PIGSKIN



Compliments of  
RODDAM'S TEXACO  
SERVICE STATION  
139 W. Cameron  
Dial Hi-6-7772  
Rockdale, Texas





Coaches R. LIERMAN, E. LAURENCE, R. BIRCHFIELD, and W. MILLER.



BILLY JOE HALL

Managers



BOBBY HANKS

Tiger Coaches

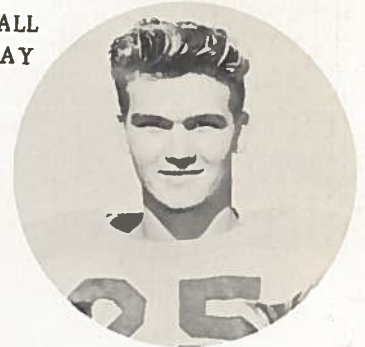


GORDON  
HARRIS



EDWARD GRUBBS

MARSHALL  
CARAWAY



HENRY  
ELLISON



Captains



RONALD  
TODD

BILL  
Junior  
2 Yrs.  
5' 11"



ED  
Senior  
4 Yrs.  
6' 1"  
Captain



JACKIE  
2 Yrs.  
Sophomore  
5' 10"



JOHNNY  
Sophomore  
2 Yrs.  
6' 0"

MOOSE  
2 Yrs.  
Sophomore  
6' 3"



The '55-'56 edition of the Tigers, coached by All-District Coach, Ernie Laurence, had 16 wins against 8 losses finishing second in District and the Belton and Rockdale Tournaments. Ed Grubbs and John Timmerman were All-District selections. Graduating are Ed Grubbs and Weldon Davenport and Ronald Todd.



WELDON  
Senior  
3 Yrs.  
5' 8"  
Captain

BINGO  
Sophomore  
2 Yrs.  
5' 10"



Compliments of  
ROCKDALE FEED AND SEED CO.  
118 Hickory at Mill Street  
Rockdale, Texas



## 'A' TEAM



## FRESHMAN TEAM



Compliments of  
MCLEOD AND TIMMERMAN GROCERY AND MARKET--217 East Cameron--Dial HI-6-2061



## 'A' TEAM



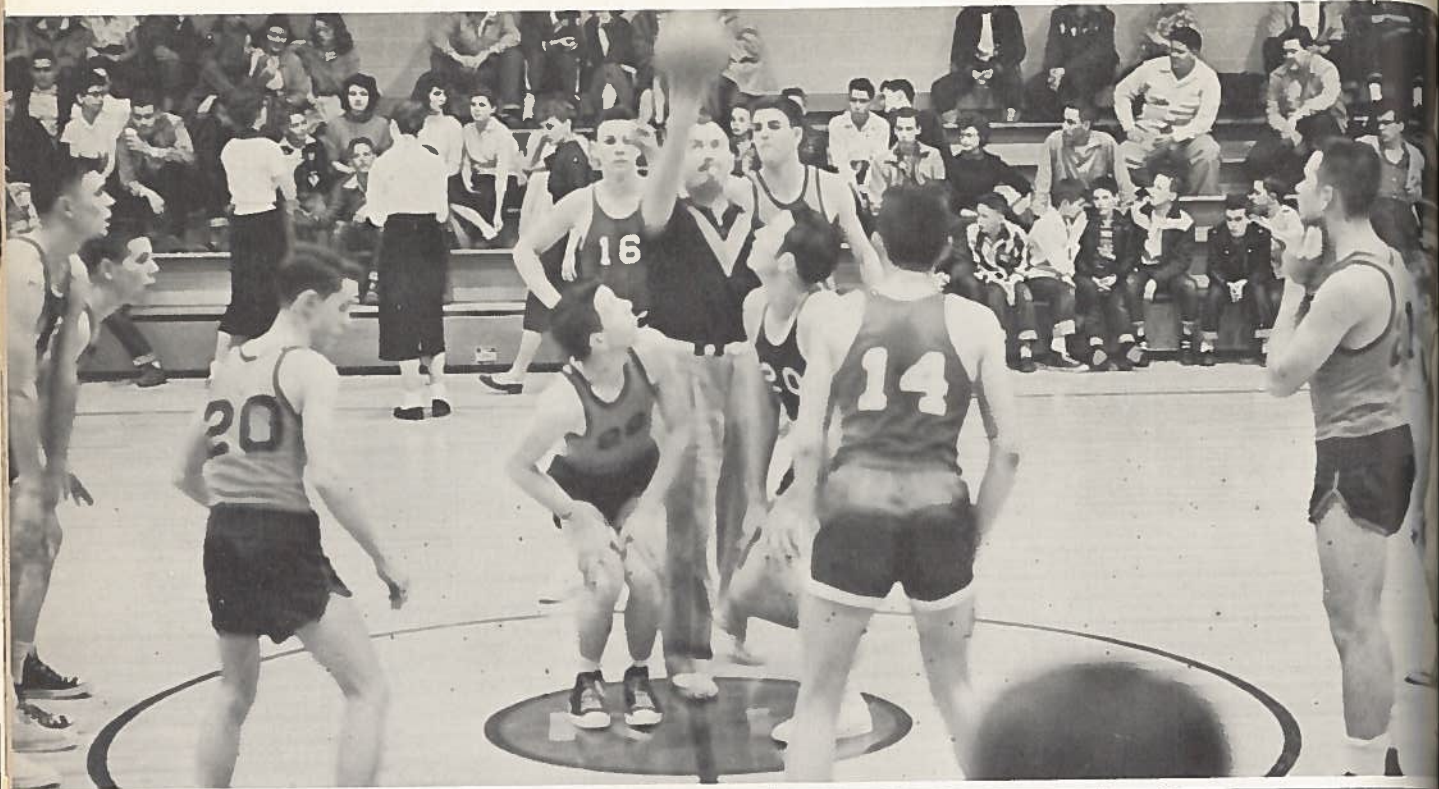
## FRESHMAN TEAM



Compliments of  
McLEOD AND TIMMERMAN GROCERY AND MARKET--217 East Cameron--Dial HI-6-2061



## BASKETBALL '55-'56

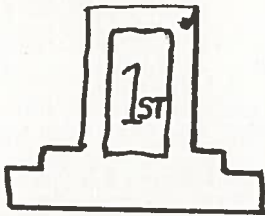


W. T. PEARSON & SONS, HARDWARE & FURNITURE  
Rockdale, Texas

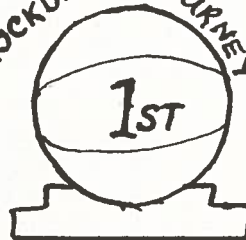


# REGIONAL PLAY-OFFS

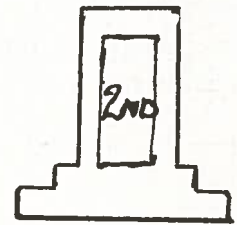
BLINN  
COLLEGE  
TOURNEY



ROCKDALE TOURNEY



BELLVILLE  
TOURNEY



Sexton Co.  
Grocery Distributors





SARAH TODD  
GUARD  
JUNIOR '56

GLORIA STEVENS  
GUARD  
SENIOR '56



IRENE STRELSKY  
GUARD  
JUNIOR '56

MARK CLARK  
GUARD  
SENIOR '56



MARTHA CARDWELL  
GUARD  
SENIOR '56  
ROCKDALE ALL-  
TOURNEY TEAM,  
BELLVILLE  
TOURNEY  
OUTSTANDING  
GUARD  
AWARD



KIRBY OWENS  
FORWARD  
SOPHOMORE '56  
BELLVILLE ALL-  
TOURNEY TEAM



ANN GROSS  
FORWARD  
SENIOR '56



SUE RUTHERFORD  
FORWARD  
SENIOR '56  
ROCKDALE ALL TOURNEY  
TEAM

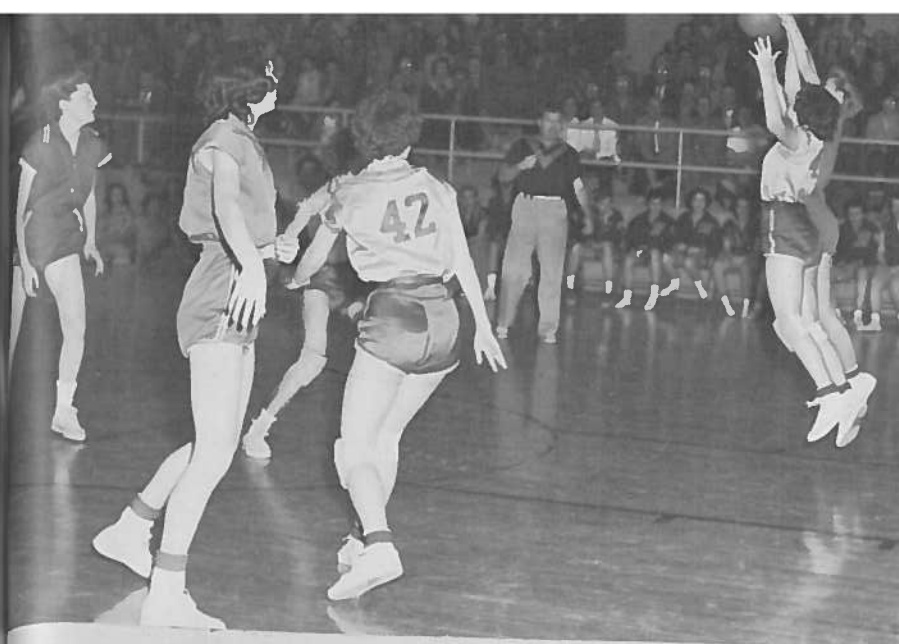


BABS TYLER  
FORWARD  
SENIOR '56  
ROCKDALE, BLINN  
JR COLLEGE ALL-  
TOURNEY TEAMS. BELLVILLE  
OUTSTANDING FORWARD  
AWARD

56



ER  
D  
56  
LUNN  
ALL-  
BELLVILLE  
ARD



"BONNIE"



MANAGER

MRS. JONES



P.E.  
INSTRUCTOR

ERNE  
LAURENCE



COACH



"MOT"



"MARIE"



"BABS"

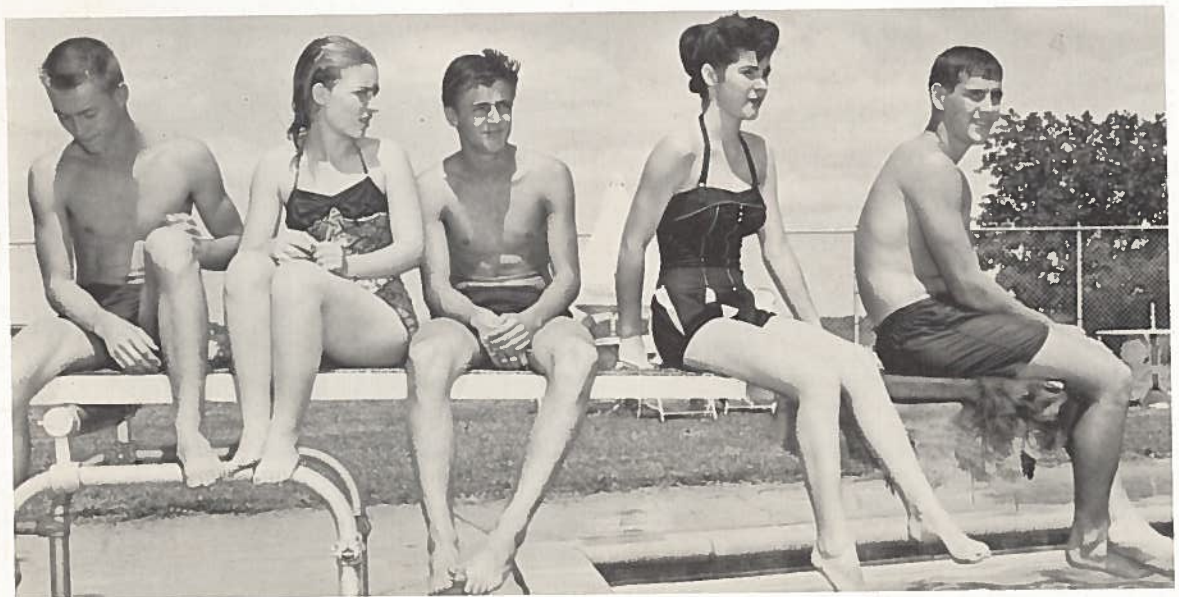
TRI-CAPTAINS



B & B. MINIMAX Super Market  
729 W. CAMERON, ROCKDALE, TEXAS



## "B" TEAM BASKETBALL



### P. E. ACTIVITY

The swimming pool is inviting.

Left to right: Errol Robinson, Juliene Miller, Jackie Yount, Charlene Holden,  
and Hal D. Stanislaw.



# ORGANIZATIONS







## STUDENT COUNCIL LEADS SCHOOL IN ACTIVITIES

Left to right:

Marshall Caraway, Vice President

Mary Ann Tunnel

W. Lee Murray

Martha Nell Cardwell, Secretary-Treasurer

H. D. Maxwell, Sponsor

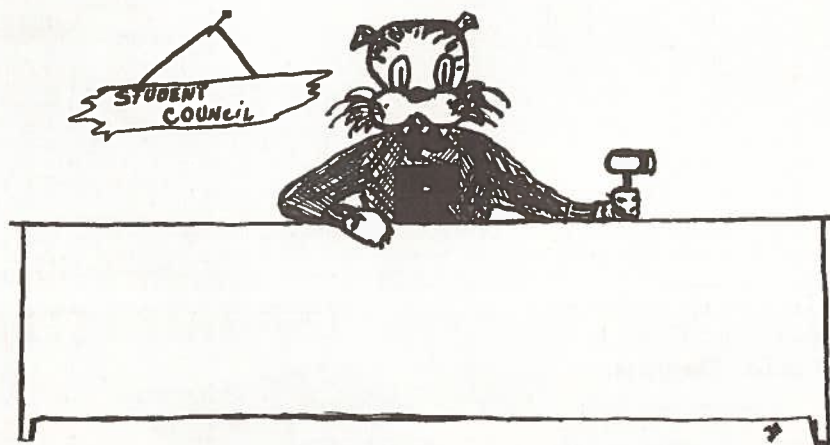
Gordon Harris, President

Nola Albrecht, Assistant Secretary-Treasurer

Richard Kirkpatrick

Charlene Holden, Reporter

Bobby Bounds



Compliments of SANITARY FARM DAIRIES, Bryan, Texas  
Milk Division, Phone 3763 - Ice Cream Division, Phone 2-1246



# TIGER TALES

Published by Students of Rockdale High School, Rockdale, Texas, April 2, 1956

## Constitution Is Ratified By High School Engineers Club

On January 26, the Engineers Club ratified their constitution by the constitution. The Engineers Club has been made one of the most exclusive clubs in R. H. S. The Constitution, as follows, sets very high standards for admission and membership in the Club.

### ARTICLE I.

#### Requirements

SEC  
the cl  
high s  
and ye  
SEC  
the limi  
except  
ases sh.  
mining  
SECTI  
members.  
make app  
of the Bo  
the Spons  
SECTIO  
shall be th  
shall be vot  
members p  
preceding  
SECTION  
Freshman  
and wishes

## Bank D Scorebo

"The scoreboard at Rockdale State is the finest thing that has happened to our M. Moorman, Rockdale Public."

"It is one of the finest things in the country and one of the finest things in the country."

Costing almost \$10,000, the scoreboard is a masterpiece of design and construction. The very modern clock shows the exact minutes and seconds left in each quarter and has scoring columns for each team. The scoreboard and clock are operated by only one man.

Mr. T. B. Ryan, President, presented the scoreboard and clock to the school on behalf of the Rockdale State Bank.

## Lovelace Talks To High School Photo Club

On Jan. 13, the Photography Club held its second meeting. Margie Luckey, Program chair-

Club should have an eighty-seven percent average or better in math and science and an eighty-four percent average or better in other subjects.

SECTION 6. Any person Senior or Junior apply

## Eight Students Compete for Scholarship

Lois Ann Braun, John Moore, Johnny Harriss, Sandy Wertz, Barbara Kirkpatrick, Joeva Wenzel, Helen Blackmon, Mullendore

## Annuals Go Off Sale Feb. 10

Anyone who has not purchased a 1955 Annual, THE LAIR, by February 10, will be sorry for that in the final date of Annual Miss Dunn

## Tigers' T Work Re In 63-50

Rockdale's bo underdogs, clip own Eagles 63-50. Played very fine team work was the Belton Tourment of sev While Rockdal old score mos m was runni could foul of the Ge fouled out. asier going f e Tigers h stars to 1 l honors of immerman 25 points s scoring team s points e

## ol Re tball

assembly Mr. H. incipal troph ketbal Laur monie Jave vard nd E with i, B lock

Martha Cardv merman, Kirby Grubbs, Sue Rubara Tyler, six all tournament cognized at the

## Rockdale New Tea

Starting with welcomed a ne Georgette Enqui She teaches a subjects. They and II, Alegebr trigonometry.

Mrs. Enquist at Sam Houston College.

After teaching land for two ye worked for the party. For the pe has kept house. her husband, L. lived in Rockdal years. They hav shall, 7, and L entered the auc talk by the Sec everyone went ferences



at Pre- Store here in Rockdale.

Duke's favorites are as follows: movie actress—Marilyn Monroe; food—steak; color—red; sport—baseball. For a hobby he keeps up with sports.

Duke plans to go to Texas University in Austin after graduation.

## Two R. H. S. Girls Get First F. H. A. Junior Degrees

For the first time in the history of the Rockdale Chapter of the Future Homemakers of America, two Junior Degrees in home economics have been completed.

The two girls who completed these degrees are Ginger Harriss and Charlene Holden. Both students are now working toward the completion of their Chapter degrees and are hoping to master their State degrees, the highest achievement for this work. Participation in these achievements is

President, Jimmy McDaniel; Vice President, Billy Pate; Sec. Tres., Jeanne Moehring; Reporter, Linda Schlottman, Door Closer, Tom Pearson; Sgt. at Arms, Tony Owens.

The election of officers was practice in parliamentary procedure for the class.

## Junior-Senior Prom

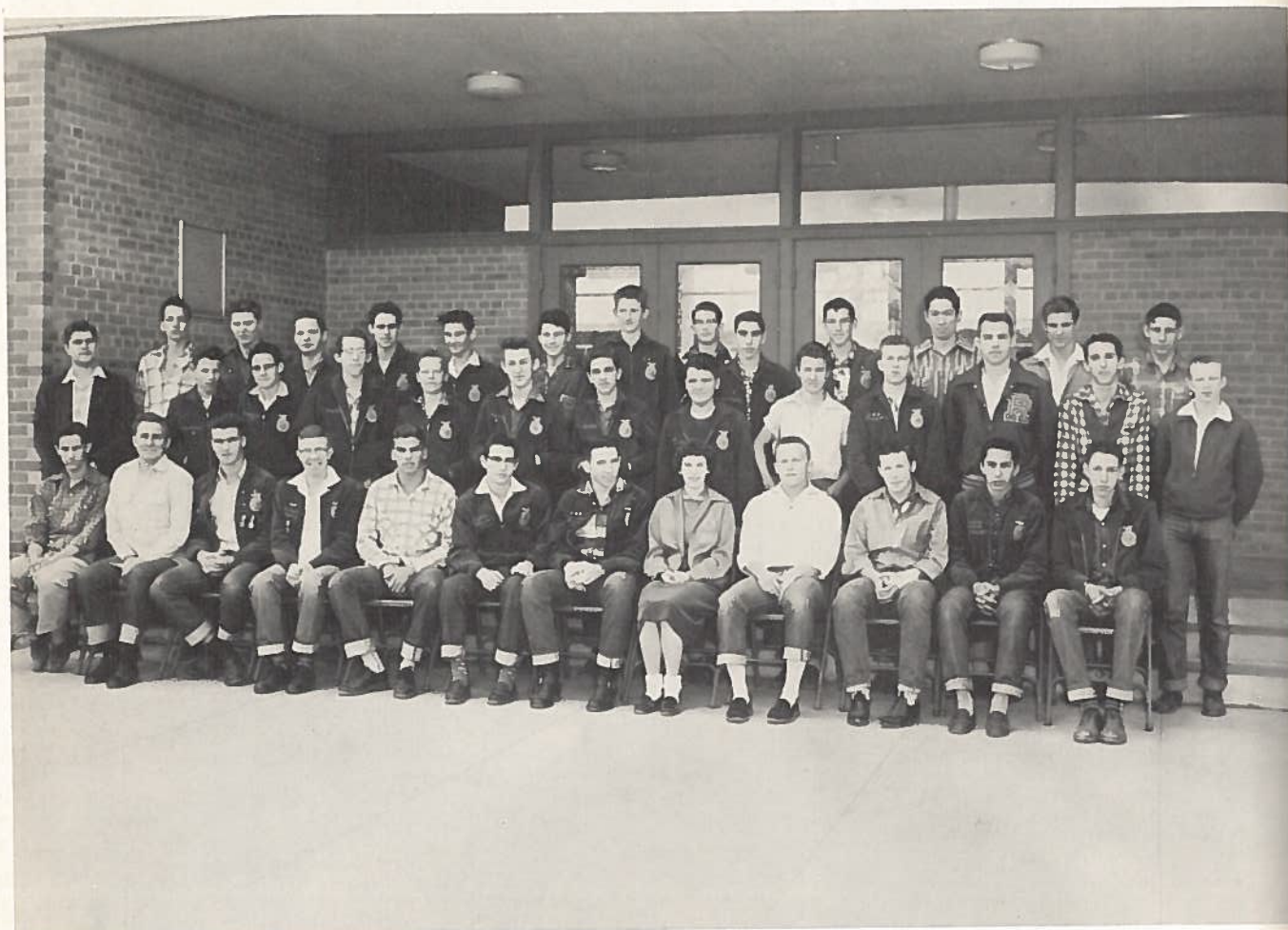
The Junior Class met in a called meeting Tuesday, March 27. The purpose of the meeting was to discuss a change of plans for the date of the Junior Senior Banquet. It was found that the dedication ceremonies for the new High School were to take place the same night as the Junior-Senior. A vote was taken, and it was decided to have the banquet and prom on Thursday night.

## TIGER TALES STAFF

Editor	Babs Tyler
Assistant Editor	Ginger Harriss
Artist	Johnny Harriss
Features	Peggy O'Neal, Becky Reynolds, Ginger Harriss
Advertising Manager	Melba Mathews
Assistants	Margie Luckey, Peggy Bounds, Gayle Fuller, Johnny Harriss, Nola Albrecht, Etta Kay Keeble, Becky Reynolds
Circulation Manager	Charlene Holden
Exchange	Becky Reynolds
Reporters	Billy Joe Hall, SueRutherford, Linda Graham, Becky Reynolds, Ginger Harriss, Charlene Holden, Jodie Magness, Peggy Bounds, Gayle Fuller, Nola Albrecht, Ruby Lee Jackson, Barbara Goley, Edna Wenzel, Frances Williams.
Sponsors	Mrs. Fanny Waller and Mrs. Maline Caraway



## F.F.A. CHAPTER



MARIE EILAND, Sweetheart



ALBERT TIMMERMAN, Sponsor

Compliments of E. M. PEEBLES AND SONS HARDWARE, Rockdale, Texas





#### F. F. A. OFFICERS

Lee Young, Sentinel; Dan Jenkins, Treasurer; Travis Walker, Vice President; Jimmy Tuma, President; John T. Yoakum, Secretary; Jim Bob Dobbs, Reporter; Larry Wells, Second Vice President.



Michaill Whitely  
2<sup>nd</sup> Place  
Lexington FFA Show



Lanier Angell  
2<sup>nd</sup> Place  
Lexington Show



Compliments of  
COWAN'S FIRESTONE  
Firestone Tires  
Dial HI-6-5312



Zeke Young  
Grand Champion Sow  
Lexington FFA Show





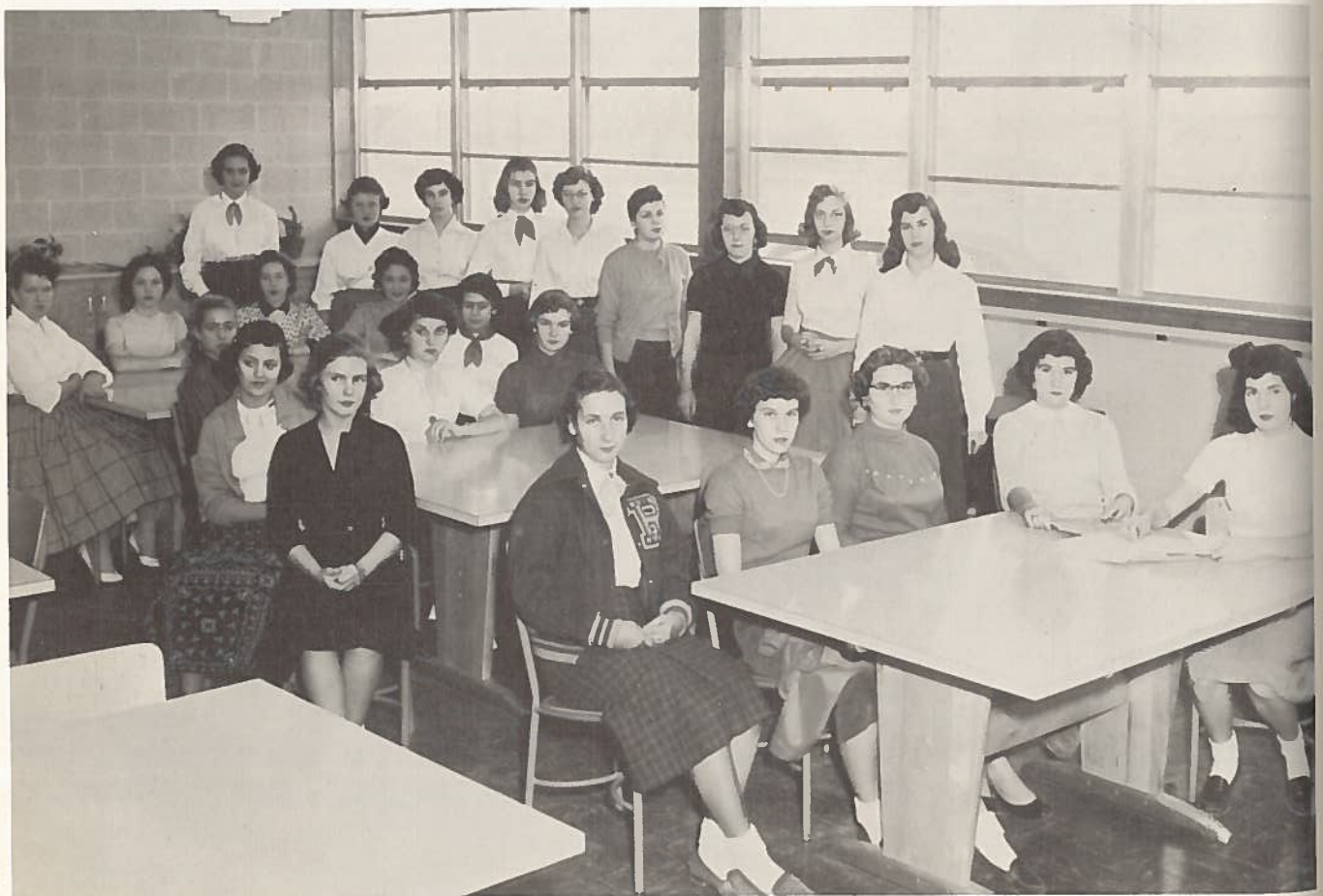


Sweetheart, WAYNE KYLE

## F.H.A.



Sponsor, MRS. D. LUCKEY



## F.H.A. COUNCIL

Compliments of HARWELL'S GULF SERVICE STATION, Complete Service  
407 W. Cameron - Dial HI-6-5411

# F.H.A.



Sponsor, MRS. I. MOODY



## OFFICERS

JODIE MAGNESS	- - - - -	Reporter
RITA MAGNESS	- - - - -	Secretary
REBECCA SKOPEK	- - - - -	Historian
GLORIA SKOPEK	- - - - -	President
CHARLENE HOLDEN	- - - - -	Vice President
GINGER HARRISS	- - - - -	Song Leader
MARIE EILAND	- - - - -	Pianist
MARTHA CARDWELL	- - - - -	Parliamentarian
SUE RUTHERFORD	- - - - -	Treasurer



## F.H.A. CHAPTER

Compliments of CAFFEY'S SERVICE STATION, Rockdale, Texas  
Phone 7732 - 241 East Cameron



RHS



BAND



# TWIRLERS

BAND



Left to right: Charlene Holden, Claudia Bond, Jove Wenzel, Drum Major; Shirley Williams, Karen Bond, Lavada Wenzel.



MR. BOND, Director



Mascots: CLAUDIA and KAREN BOND



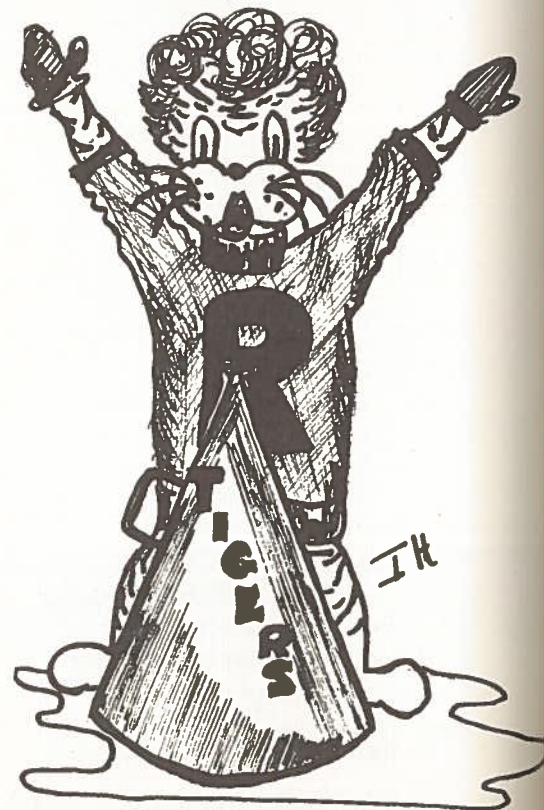
# PEP SQUAD



The Squad Revives Indian Ceremonies  
A Cappella vocalizing is nothing compared to the  
workout capable cheerleaders give their lungs.



Left to right: Shelton, Harris, Peterson, Goehler, Rutherford.



Compliments of McVOY GROCERY AND MARKET--Purina Feeds--Rockdale, Texas



## P.T.A.



Left to right, seated: Mrs. A. A. Goehler, Mrs. Harold Love, Mrs. M. C. Perry. Standing: Mrs. C. B. Sessions, Mr. Charlie Hord, Jr.; Mr. Harold Love, Mrs. J. F. Sonntag, not shown; Mrs. L. G. Rinn, Mrs. Glen Lumpkins.

### OBJECTS OF PARENT-TEACHER ASSOCIATIONS

TO PROMOTE the welfare of children and youth in home, school, church, and community.

TO RAISE the standards of home life.

TO SECURE adequate laws for the care and protection of children and youth.

TO BRING into closer relation the home and the school that parents and teachers may cooperate intelligently in the training of the child.

TO DEVELOP between educators and the general public such united efforts as will secure for every child the highest advantages in physical, mental, social, and spiritual education.

The P. T. A. has accomplished many things this year as in past years. Two of the main things they did were to give \$750 to the Junior High-Elementary Library and organized a Student Service Committee which has been working on the Youth Center which hopes to open June 1st. They gave \$50 to this project. They have 611 members, sponsored an Art Exhibit at the School, gave \$25 for tennis nets at Junior High, helped with the Speech Survey, gave \$10 for State P. T. A. Endowment Fund, honored teachers at first meeting, and cleared \$1,085.17 of the Carnival.



# LIBRARY



Leisure Reading



CORA SUE CAFFEY - - - - - Secretary  
DOROTHY GREENWOOD - - - - - President  
MELBA MATTHEWS - - - - - Reporter  
LEE IDA HOLLIMAN - - - - - Vice President



Circulation Desk

Compliments of HENRY'S GARAGE - Expert Auto Repairs



# LIBRARY



Main Reading Room



MRS. IDA JO MARSHALL  
Librarian



LIBRARY CLUB

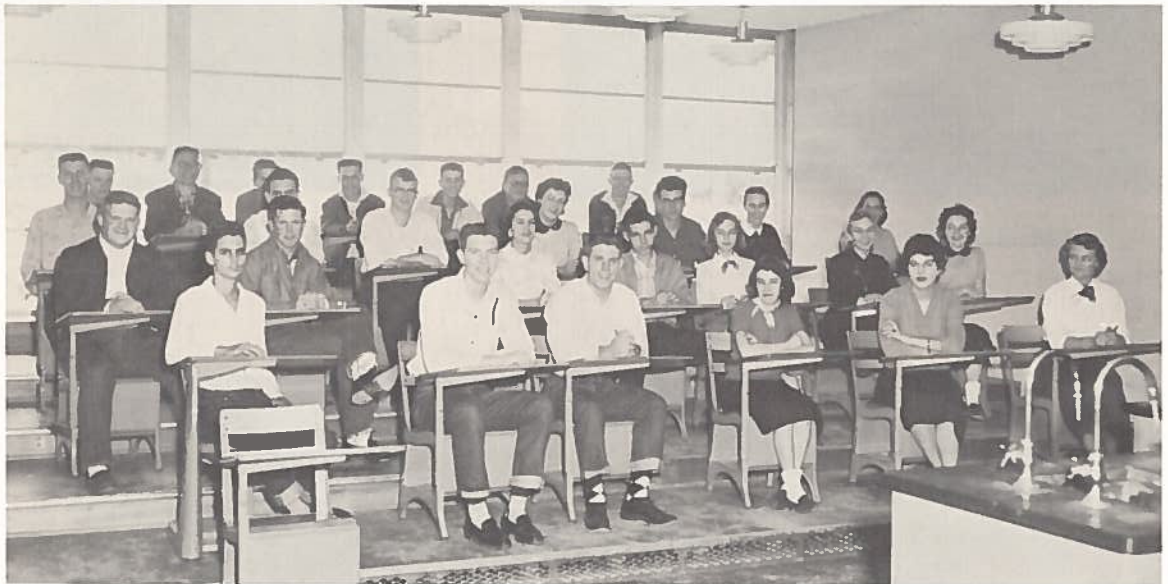
The Hi-Li Club is a member of The Texas Teen-Age Library Association.

Compliments of MRS. H. G. PERRY, Insurance Agency, Rockdale, Texas

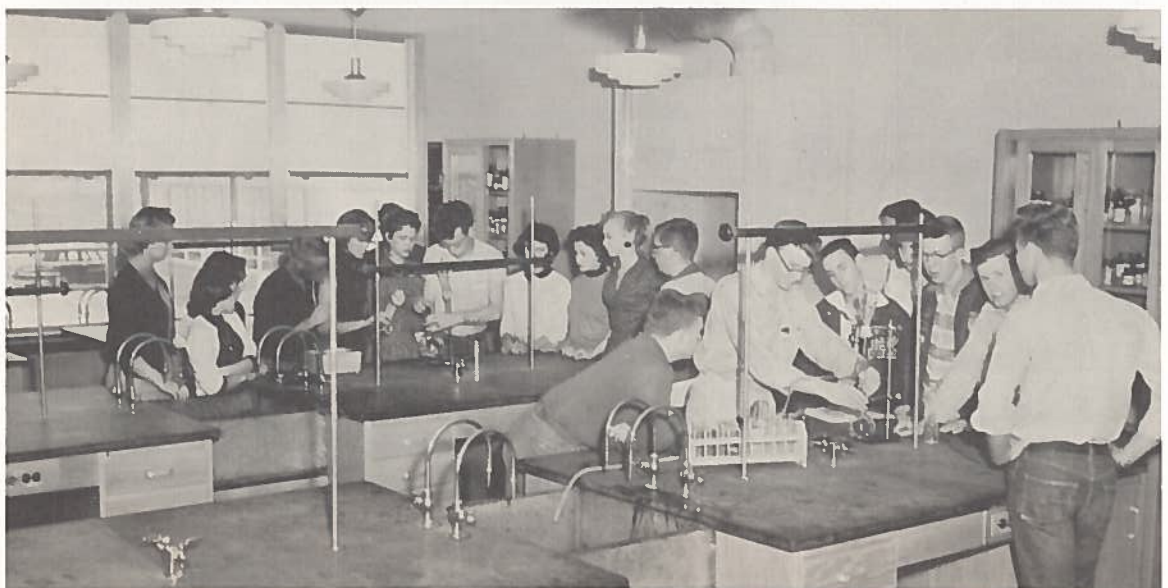




ENGINEERS' CLUB



SCIENCE CLUB



CHEMISTRY LAB





SPANISH CLUB



PHOTOGRAPHERS' CLUB



NURSES' CLUB





Annual Staff Salesmen who have done good work.

## THE LAIR STAFF



LAIR sales boomed when salesmen Billy Sager and Courtney Armstrong hustled the great publication.

## OFFICERS

CAROLYN HART HARRIS  
Editor

GORDON HARRIS  
Assistant Editor



JUNE KIRCHENWITZ  
Business Manager



Sponsor  
NORA DUNCUM

"It takes a year to build a yearbook--and a devoted staff to build it well."

TED'S FOOD MART  
1012 W. Cameron - Rockdale, Texas

# HIGHLIGHTS

CUM  
to build a  
devoted  
well."



"Collecting Memories" Fill Our Months in 1955-56





Eager Tigers anxious to get registered.



Typing Department helps to solve the scheduling problems.



Webster's Dictionary Befriends English Students.



Students learn by doing. Compliments of SMITH'S DRIVE-IN, HI-6-7727  
Highway 79, Rockdale, Texas





Ended with Coronation of Queen.



Seventh Grade in Halloween Parade Winner



Added Activity--Student Officers of the Day

## FALL ACTIVITIES HUM







Turkey with all the Trimmings



A gaily decorated and well hung Christmas tree gets plenty of attention.



N. C. Malechek, Principal



Is there a Santa Claus?  
Ask these people.



ERNIE LAURENCE, Principal



H. D. MAXWELL, Principal



J. M. MOORMAN, Superintendent



Mid-term Tests  
January 1956



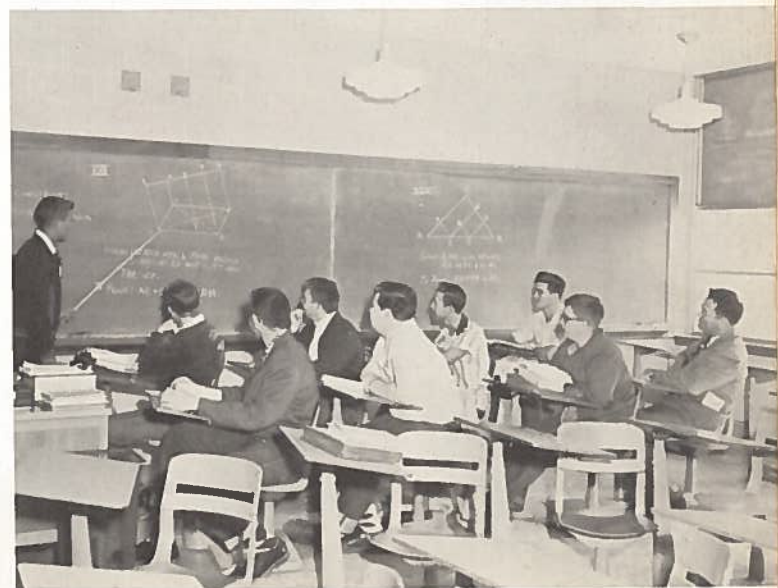
Test time, too, looks pleasant in this department.



The students in Rockdale Schools work and play together for the mutual advancement of the "school we love."



Young mathematicians ponder problems.



Compliments of  
MAREK'S PHARMACY, Rexall Drugs - Prescriptions  
Rockdale, Texas





Turkey with all the Trimmings



A gaily decorated and well hung Christmas tree gets plenty of attention.



N. C. Malechek, Principal



Is there a Santa Claus?  
Ask these people.



ERNIE LAURENCE, Principal



H. D. MAXWELL, Principal



J. M. MOORMAN, Superintendent



Mid-term Tests  
January 1956



Test time, too, looks pleasant in this department.



The students in Rockdale Schools work and play together for the mutual advancement of the "school we love."



Young mathematicians ponder problems.



Compliments of  
MAREK'S PHARMACY, Rexall Drugs - Prescriptions  
Rockdale, Texas





## JUNIOR-SENIOR BANQUET PROM

"A Night to Remember"







## SENIOR PLAY



"Rest Assured"  
A Comedy in Three Acts

Practice, Practice!



Opening Night!

## GRADUATION



Seniors take last walk in new building!



Some take part in Commencement exercises.

## SENIOR TRIP





Dear Readers:

This Annual would not have been possible but for the businessmen and friends who have placed ads herein. Let's show them our appreciation by patronizing them first.

"Our doors are closed. Our memories are recorded--our books are put away. The school year of 1955-56 is but a memory...."

We quote Thomas Moore who wrote:  
"When time who steals our years away,  
Shall steal our pleasures, too,  
The memory of the past will stay  
And half our joys renew."

Yours truly,  
The Staff



It is finished!! Was it worth it?

Compliments of ROCKDALE SANDOW & SOUTHERN RAILROAD COMPANY, A. A. GOEHLER, Gen. Mgr.

*John T. Hale*

INSURANCE  
Dial HI-5335



Rockdale, Texas

## LEWIS-BREDDT CO.

Insurance - Real Estate - Auto Loans

129 North Main

Rockdale, Texas





Compliments of

*Rockdale*  
STATE BANK

Rockdale, Texas

Member Federal Deposit Insurance Corporation

# GAITHER MOTOR CO.

Your Friendly Ford Dealer

*Rockdale*  
TEXACO AGENCY

Wholesale Distributor

W. P. "RED" HOGAN

Rockdale, Texas

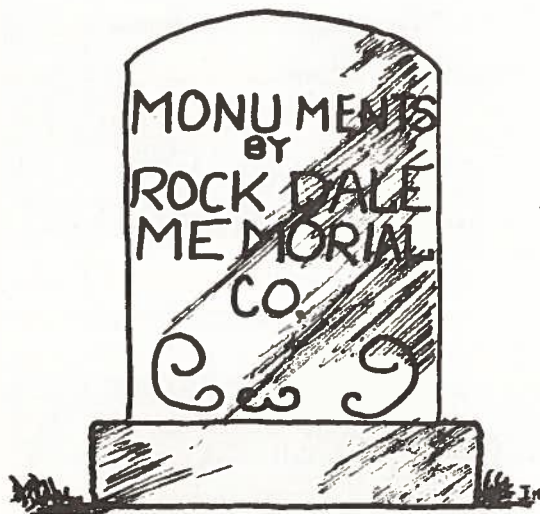
## *Rockdale Memorial* COMPANY

Designers of  
Monuments  
Markers  
Mausoleums

Authorized Dealer for Rock of Ages

Rockdale, Texas

Dial HI-6-5033





# PHILLIPS AND LUCKEY COMPANY

Undertakers and Funeral Directors

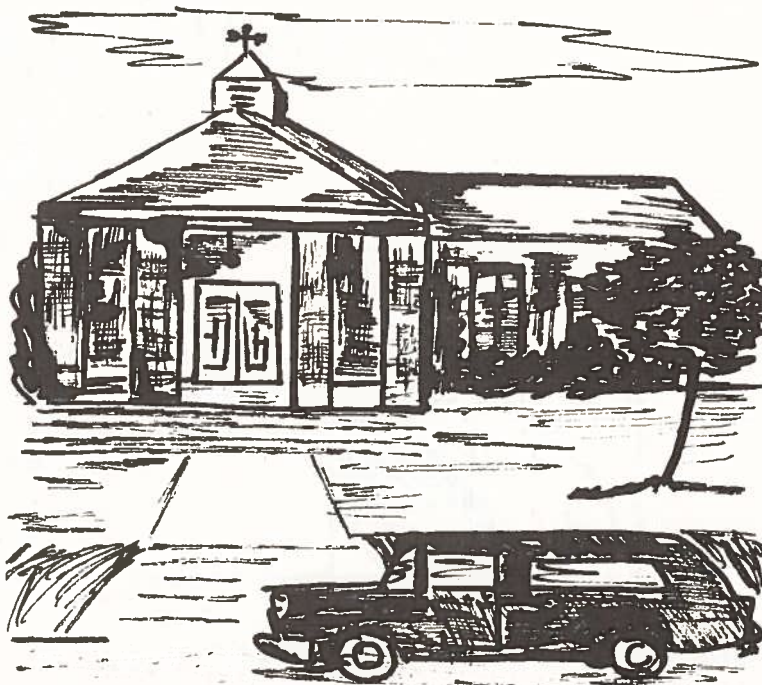
in

Rockdale, Caldwell, Giddings

24 Hour Ambulance Service

Rockdale, Texas

Dial HI-6-5454





# Strickers

## VARIETY STORE

"May Your Future Actually Be As Rosy As It Looks Now"

Rockdale, Texas



LOUIS C. GEST  
Dealer

Buick

Chevrolet

Rockdale, Texas





Compliments of

*Rockdale*  
ATHLETIC  
ASSOCIATION

T. A. WEEMS - - - - -President

JOHN YELVERTON - - - - -Sec. -Treas.



Congratulations  
Two Good Places for Tigers  
to Meet and Eat

Choice Steaks  
Shrimp  
Sea Food  
Chicken

Steaks  
Shrimp  
Chicken  
Mexican Dinners  
Sandwiches and Malts

Private Dining Room for  
Parties and Meetings

SINGER'S GRILL CAFE

Open 5 Till 10

A-1 CAFE

Open 24 Hours

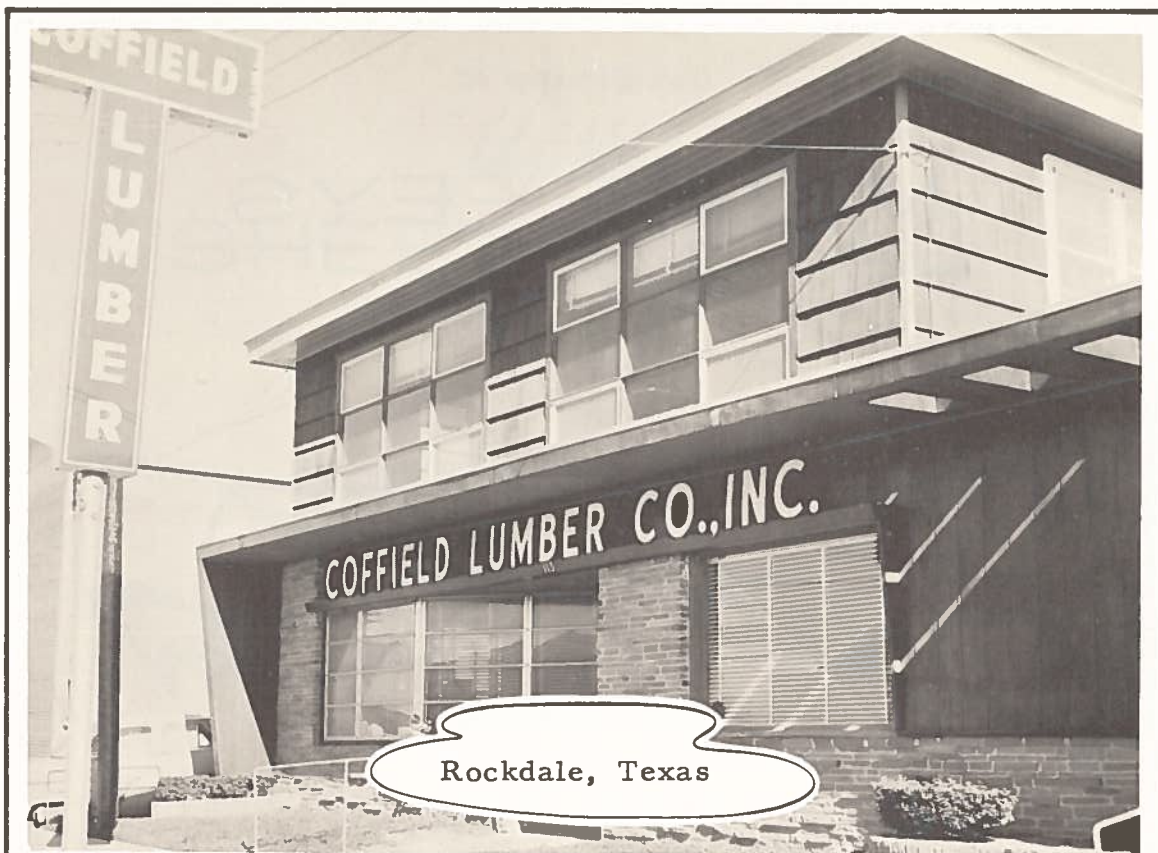
## THOMPSON CAFES

Wishing You Success  
We Are Striving to Serve the  
Future Tigers  
Everything for Infants to Seven  
Featuring Name Brands  
Toys and Gifts

Make This Your Shower Headquarters

*Heaven to Seven,*  
INC.

Rockdale, Texas



24 Hour Service

Expert Auto Repairs at

# KOEHLERS GARAGE

Rockdale, Texas

Day Phone: HI-6-5060

Night Phone: HI-6-5394



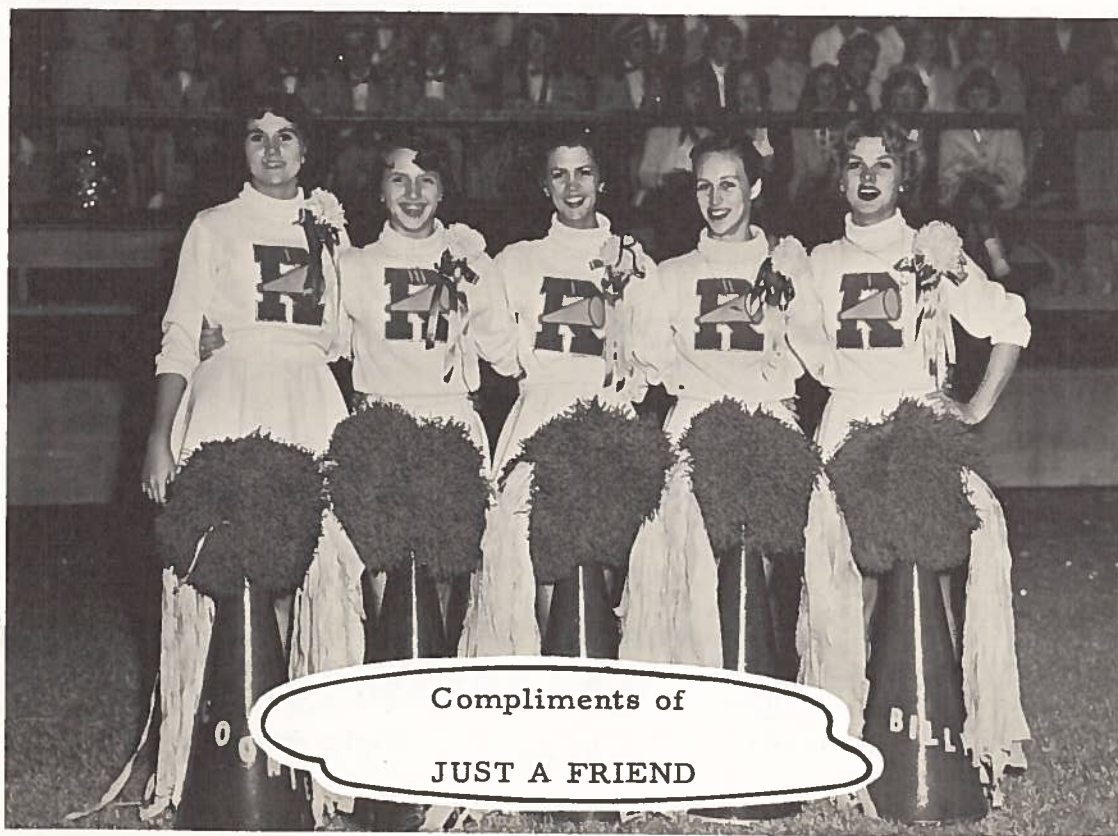
Compliments of

# MEHAFFEYS

First in Quality



Rockdale, Texas



Compliments of

JUST A FRIEND

*Acme*  
SHEET METAL  
CO.

Heating - Air Conditioning - General Sheet Metal Works

TRUMAN HAUPT, Owner

Rockdale, Texas

Working Together to Make Rockdale  
Your Opportunity--Your Future

ROCKDALE  
*Chamber of Commerce*

1955-1956 Officers and Directors

M. S. CROFT, Manager	MRS. BILLYE BROWN, Sec.	
GEORGE E. BREDT - - - - -	President	
J. R. YEAGER - - - - -	First Vice President	
CLYDE FRANKLIN - - - - -	Second Vice President	
LINWOOD MEHAFFEY - - - - -	Treasurer	
M. M. CAMP	J. COLLIER PEARSON	W. F. SAAGE
DR. T. C. GREEN	C. W. MOEHRING	M. D. WEEMS
H. W. HELMER	EDWARD LUCKEY	



IN  
CINEMASCOPE  
VISTAVISION  
SUPERSCOPE  
NEW SOUND



Compliments  
of  
THE ROCKDALE POLICE  
DEPARTMENT

Compliments of

*Texas  
Power and Light  
Company*

Your Electrical Servant in

Rockdale, Texas

Compliments of

DUNCUM MOTORS

DeSoto - Plymouth

Box 230

Phone 228

Cameron, Texas

Mercury Outboard Motors