

THE LAIR

1936

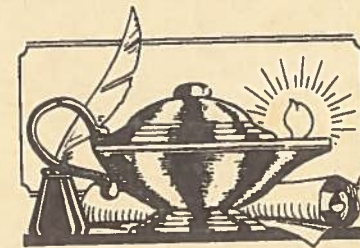
ROCKDALE SCHOOL LIBRARY

BOOK No. \_\_\_\_\_ COPY No. \_\_\_\_\_

7765

ROCKDALE SCHOOL LIBRARY

BOOK No. \_\_\_\_\_ COPY No. \_\_\_\_\_



EX LIBRIS

ROCKDALE SCHOOL LIBRARY

BOOK No. \_\_\_\_\_ COPY No. \_\_\_\_\_



# The Tiger Lair <sup>Kyle</sup>

PUBLISHED & COPYRIGHTED

By The Senior Class of R.H.S.

VIRGINIA HALE-EDITOR

TOMMY COFFIELD-BUS MGR.  
1963

# Foreword Kyle

We, the classes of Rockdale High School in 1936, take pride in leaving this book as our contribution to the commemoration of the Centennial of our State and we have tried to depict the development of Milam County and Rockdale from the primeval scene of the buffalo range and the wilderness, through the age of the Indian, who left us a heritage of freedom and space; through the time of the Franciscan padres, who left us romance in the names of the physical features of our county; through the era of Sterling C. Robertson, who was the father of Milam County, colonizer and leader; through the period of the Revolution and Ben Milam, who gave us his illustrious name and represented the sterling character of the pioneer; through the chapter of the Civil War and General Laurence Sullivan Ross, who stands to represent all Milam County heroes who participated in this upheaval; to the present day when we prefer to think of Milam County as a link in the whole chain of Texas counties and as being Texas itself, most glorious state in the Union, and when we see our Texas character personified in our distinguished Governor, James V. Allred. Herein will you find these characters portrayed by the artist's pen and herein will you feel their influence as you turn the pages of our book and, we hope, close the volume with a lasting impression and appreciation of the greatness of our part in the history of Texas.



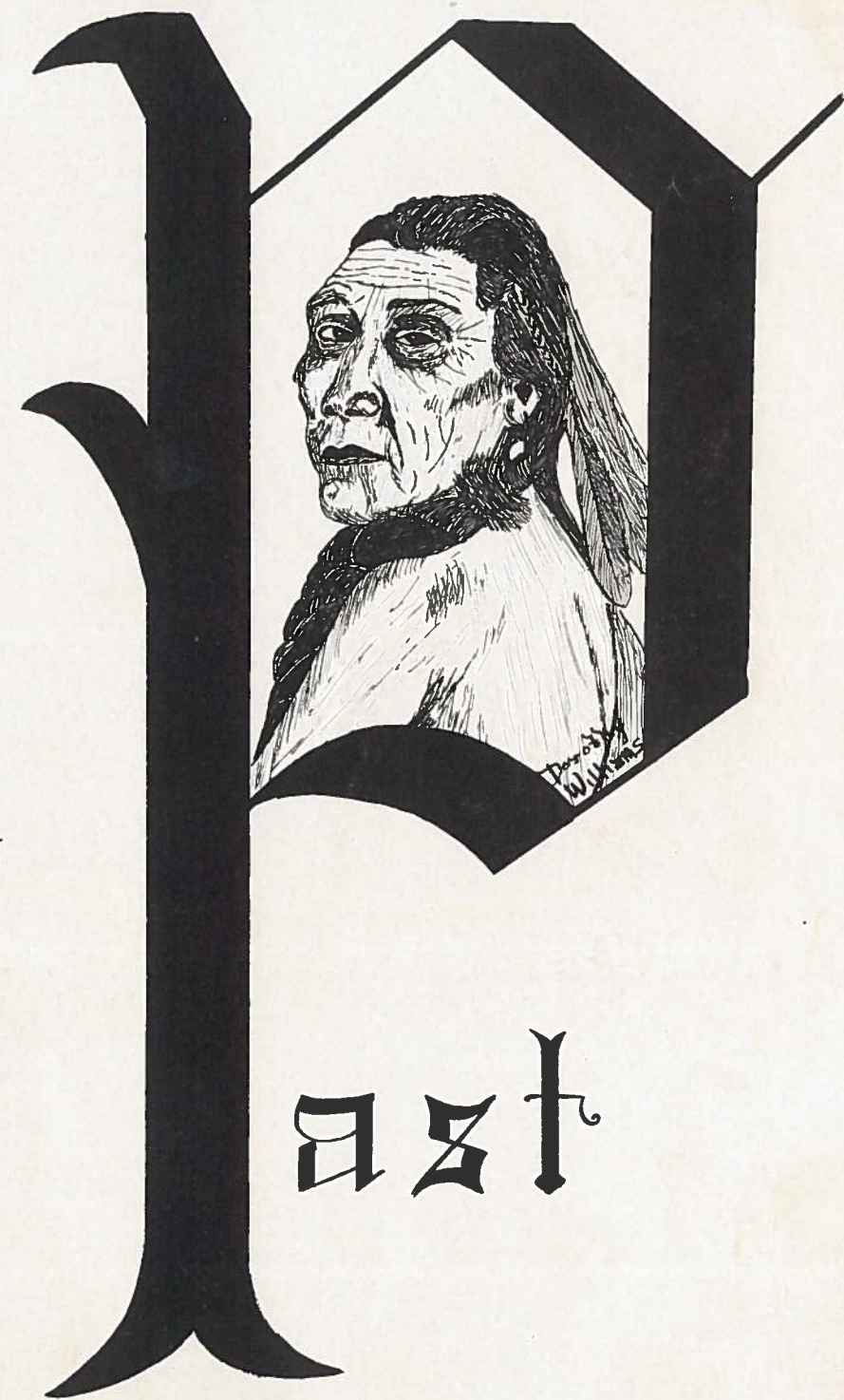
# Dedication Kyle

To the efficient and painstaking instructor, the sympathetic and firm friend of the pupil, the systematic organizer and disciplinarian, Superintendent S. C. Miles, the Senior Class of nineteen hundred and thirty-six respectfully dedicate this annual.

# Contents

-style-

- I. Past
- II. Personnel
- III. Personalities
- IV. Power and Precision
- V. Pastimes
- VI. Pot-pourri



History of  
Milam County  
City of Rockdale  
Rockdale Public School



(EDITOR'S NOTE: The history of Rockdale and the Rockdale Public School, has been presented in as clear and true a manner as possible. This would have been impossible had it not been for the information furnished me by a few of the pioneer settlers and friends who have been associated with the town since its early beginning. For co-operation in this work I am indebted to the following: Messrs. L. H. Porter and W. Hill Marshall, and Mesdames C. K. Stribling, R. H. Hicks, A. M. Dunnington, J. E. Longmoor, Lorena Kevil Bradley, J. L. Lanning.

In the extensive history of Milam County all credit goes to Mrs. Hubert Dennis, a very efficient history teacher of the Rockdale School, who is also Sponsor of the Annual. The history is gotten up entirely on research work of Mrs. Dennis in various Texas histories, assisted by information from Mrs. Jeff T. Kemp of Cameron.—VIRGINIA HALE, *Editor.*)

## Milam County

"To the eye Milam County presented the appearance of a vast stretch of undulating country, threaded at intervals by clear streams of running water and divided almost equally between timberland and prairie. All kinds of game, such as buffalo, deer, antelope, bear, wild hogs, and turkeys were there in abundance, while the climate was almost ideally perfect. It was the hunter's home, the pioneer's paradise, and the poet's dream of breathing beauty."

The territory along the banks of the San Gabriel and the Brushy was occupied by various small tribes of Indians, probably akin to the East Texas tribes. The Spanish found them here and have given their names as the Mayeyes, the Deadoses, the Yohuanes, Bidai, Cocos, Orcoquizas, and others. These names are found in Dr. H. E. Bolton's articles on the subject of the San Gabriel missions. The impression one gains from studying the meagre sources of information on these tribes is that they were not of the semi-civilized, more stable type of Indian, but more or less of a wandering and restless nature. They spent their days hunting in the woods along the Gabriel, fishing in its waters or chasing buffalo on the slopes. In summer they feasted and in the winter they shivered and starved. In summer they often followed the buffalo north and west to the plains and here they came into conflict with their hereditary enemies, the Apaches. Periodically they organized themselves into raiding bands and went on the warpath with murderous intent in search of Apaches. Thus their lives were one long idyll of savage existence, in cycles of war, the chase, orgies of feasting, and religious festivals, until the arrival upon the distant horizon of an undreamed of menace to their peace of mind—the Spanish conquistadores.

About 1714-1715 Spain became suddenly interested in settling Texas, for the French were settling on the Mississippi and Red Rivers, and were getting too close to the Spanish claims for Spain to rest comfortably. The first mention to be found of Spain in Milam County is in the reports of Captain Ramon, who told of crossing the San Andres (Little River) on May 31, 1716, just above its confluence with the Brazos, and of naming another stream which emptied into it, the San Francisco Xavier. This name, Xavier, (pronounced Haver' in Spanish) was corrupted into Gabriel, and the stream has since been known by this name. On one of Austin's early (1829) maps he names the stream the "San Javriel." In 1720, Aguayo, a Spanish governor from San Antonio, traversed Milam County and crossed Little River on June 12, after a delay of seventeen days on account of high water. In 1732, Bustillo, traveling from San Antonio on a campaign against the Apaches, reached Little River, also. In his party were one hundred and fifty-seven Spaniards, sixty Indians, one hundred and forty pack loads of supplies, and nine hundred horses.

In 1744, Fray Francisco de los Dolores y Viana, a missionary from the Alamo, on tour in search of Indians, found a large village of them near the junction of the San Gabriel and Brushy Creek. He tried to coax them to join him and enter the mission at San Antonio, but they refused, promising, however, to visit the Alamo at a later date. Soon four chiefs appeared in San Antonio with a request that the priests establish a mission in this country. It was later found out that their real purpose in asking for a mission was to secure the aid of the Spanish and their guns against the Apaches. Father Ortiz was dispatched to Mexico City to ask permission of the viceroy to found the mission, and in 1746 permission was granted for the construction of three missions on the San Xavier. In 1748, thirty soldiers were sent to protect the priests, while in the meantime Dolores had, on his own initiative, established a mission on the Gabriel, the first foundation before Dec. 26, 1746. The viceroy's orders were carried out and two missions were added to this one the same year. The three were placed at some distance from each other along the Gabriel and were named San Francisco Xavier de Horcasitas, San Ildefonso, and Nuestra Señora de la Candelaria.\* In 1751 there were three hundred and forty-nine Indians in the three missions. These missions suffered heavily from the attacks of the Apaches, and in 1751 a fort was built and more soldiers sent to guard the

\*According to Mr. L. H. Porter, San Xavier was on the Kolb place, Ildefonso on the fork of Brushy and Gabriel, and Candelaria on the Porter farm.

settlement. Smallpox reduced the population, many Indians ran away to join a campaign against the Apaches, the priests and the officers at the fort quarreled, and finally friction produced a tragedy in 1752 that demoralized the whole organization of the missions. One of the priests was killed, probably by a soldier, and after three more years of struggle against overpowering odds, the missions were deserted (1755) and left to decay and crumble. Time has erased them from the scene, for, like other missions of this part of Texas, they were constructed of logs and rotted away under the work of the elements. Traces of this settlement are still found scattered up and down the river, but nothing whole is left as a monument to the work of the faithful and unselfish Spanish padres. Some traces of a dam may be seen on Ditch Valley farm, faint marks of irrigation projects may be found, some stones used in the construction of the missions may be located, and even the bones of some of those connected with the missions have been unearthed. Many legends are related in connection with happenings in the vicinity, but we are interested in facts only in this account. Interest in settling Texas waned soon after, for France ceded Western Louisiana to Spain in 1762, and no further effort to inhabit Milam County was made by Spain.

From 1755 to 1823 seems to be a blank in the history of Milam County. It is probable that during this time the country was visited at various times by other Spaniards or by the American filibusters of the period, but no authentic data are to be found of such occurrences.

In 1823 a venturesome young American, who had spent some time in Mexico after its struggle for independence from Spain was over, and there had heard of Texas and its opportunities, decided to visit the land; so, in his home town, Nashville, Tennessee, he organized a company to explore the wild country. Sterling C. Robertson, the son of a wealthy planter, was born in Nashville, October 2, 1785, and was reared there. He was a well-educated young man and had served as a major in the War of 1812. The company from Nashville reached the Brazos in 1823 and formed a camp at the mouth of Little River. From this headquarters they spent several months hunting, fishing, and exploring the adjacent territory, and, during the time, Robertson visited Austin's colonies and others, gathering information with the idea of obtaining a grant of land and bringing in families from Nashville and Tennessee. Upon his return home, he arranged to purchase a contract (dated April 25, 1825) with the Mexican government that had been made by Robert Leftwich, for the settlement of eight hundred families on the Brazos, Little River, and the San Gabriel. The contract gave him six years to settle the eight hundred families. Late in 1829, at his own expense, Robertson introduced one hundred families into Texas; but they were held up at Nacogdoches by the Mexican military authorities, who had received false reports in regard to Colonel Robertson and his colonists. It was not until 1830 that the Nashville Company reached the Brazos, and this only after having led the authorities to believe that they were going to join one of Austin's colonies. It was not until April 29, 1834, that Robertson finally cleared up the matter with the government in Mexico and the contract reinstated. In the summer of 1834 Robertson made his headquarters on the west bluff of the Brazos, (five miles from Marlin) near the falls, and laid out a town called Sarahville de Viesca. There was a ford on the river at this point, which, in part, accounts for this choice of a site. The name Viesca was in honor of the Spanish governor of the time. Alexander Thompson, Robertson's right-hand man, established another settlement down the river as a distributing point for settlers. This site was on the west bluff of the Brazos just below the junction of the Little River and the Brazos (near Hearne). The place was known as Fort Nashville. A fort of cedar logs was constructed and business was transacted here and records preserved. Nashville later became the most important settlement in the colony and the capitol. Also, when a discussion arose in the time of the Republic over the selection of a permanent capital for Texas, Nashville came within a few votes of winning the honor. The first land office was opened about October 1, 1834, and in 1835 Robertson made a trip back to the States to induce settlers to follow him to Texas.

Ten miles south of Nashville. Tenochtitlan was established on the crossing of the Old Spanish Trail, and became an important settlement, while north of Nashville, Sterling (near Calvert) became another distribution point.\*

One of the first permanent settlements in Robertson's colony was Jones Prairie, settled in 1833 by Joseph P. Jones, who came from Illinois and obtained a league of land in the vicinity. A later point of importance was Port Sullivan, near the mouth of Little River. Davilla, one of the oldest settlements, had its beginning when the Spanish government sold to Miguel Davila a grant of land on October 18, 1833.

Robertson's original grant included roughly the section embraced as follows: The west bank of the Navasota River south to the Old San Antonio Road (or Spanish Trail), along the road west to the divide between the Brazos and the Colorado, along the ridge north to the Old Comanche trail, thence east to the Navasota. His grants included parts of the present Brazos, Burleson, and Hill Counties, and all of Williamson, Milam, McLennan, Bell, Limestone, and Navarro counties. The territory was given the name of the Municipality of Viesca, and delegates from the district were always designated as being from Viesca. Other counties included in this municipality were Burnet, Lampasas, Bosque, Coryell, Hamilton, Erath, Hood, Comanche, Brown, and Eastland.

Robertson proved himself a wise and farsighted empresario and, before the revolution, he had introduced more than six hundred families to his colony. He never spared himself expense and labor for their interests, and was a gentleman of culture, intellectual, unselfish, enterprising, patriotic, and a good leader and a statesman. He lived on his farm in what is now Robertson County until his death on March 4, 1842, at the age of fifty-seven years.

Milam County played her part in the Texas Revolution, and in the period of the Republic had a hand in all affairs. Again Sterling C. Robertson was leader in his colony. He was a delegate from Viesca (official name of Robertson's colony, also known as the Nashville colony) to the convention of March 1, 1836, which was called by the general council to meet at Washington-on-the-Brazos, and, on March 2, he signed his name with fifty-seven others to the Declaration of Independence, which was penned by George C. Childress. Childress had assisted Alexander Thompson in the establishment of Old Nashville. A few days later, Robertson took part in the drawing of a Constitution for the Republic of Texas, and again was one of the signers of the document. When the convention received news of the fall of the Alamo, it disbanded at once (March 17), and Robertson returned hastily to Viesca to organize a force to help fight the Mexicans. Forming a company, he marched to the aid of Houston. He and his men participated in the Battle of San Jacinto, and, for his heroic services, Robertson was given six hundred and forty acres of land. During the "Runaway Scrape," Robertson's colonists deserted their homes, and, after this, some of the villages practically disappeared. The first man to move back to Viesca was John Marlin, and later Captain Joseph Daniels, famous Indian fighter, built Fort Milam on the site of old Viesca. In the latter part of the year 1836, the Indians became very troublesome, and Robertson organized a ranger company to protect his colonists from attacks. Many accounts of Indian raids and Indian fights are preserved from this period of Milam County history, but it is hard to sift the truth from the legendary accounts of these events. One story that is typical of the Indian situation is the history of the Mercer brothers, Peter and Jesse, and a man named Orr who settled on the Gabriel, west of Cameron, and who were attacked by the Indians. A bluff known to this day as Mercer's Bluff is said to have been the spot where Peter Mercer, Orr, and a negro servant leaped to their death in an effort to escape the marauders. It is said also that the town of Cameron is located on the spot where an Indian fight once took place.

On December 26, 1835, nineteen days after Ben Milam fell at San Antonio, the provisional government of Texas had changed the name of the municipality of Viesca to Milam Land District. We therefore have the honor of being the first district named for a hero of the revolution. When the first Senate of the Republic was called in session, Robertson was elected from the District of Milam and served two terms. Milam was the first county organized after the revolution, and Nashville was the county seat. Early in 1836, Massillon Farley was named County Judge, and William Thompson, County Clerk.

\*Judge Calvert's granddaughter, Mrs. J. W. Doremus of Dallas, still owns the plantation at the original site of the village. Her title is in the form of a Spanish land grant dated 1825.

In 1837, the first county court was held at old Nashville. The name of the sheriff was John Beal. In the early fifties the district was divided into many smaller counties.

In January, 1842, an act of the Congress of the Republic named commissioners to select a permanent county seat of Milam County to be called "San Andres." But about this time Captain Ewen Cameron, a Texas ranger and a member of the Mier Expedition, met his death by special order of Santa Anna, and it was decided to name the new town for him. In 1846, Milam County was organized as now constituted, and Cameron became the county seat. The town was built on a tract of sixty acres donated by Captain Daniel Monroe, and he and a group of pioneers founded the county seat. The first courthouse was erected in 1846 and W. W. Oxshier was District Clerk, Isaac Standifer, Chief Justice, Francis Duffau, County Clerk, and John McLennan, Sheriff. (This building was moved and another erected later. In 1874, the second building burned, and the records were destroyed; in 1875 a new building was constructed, only to be condemned in 1889. The fourth and present courthouse was built in 1892 at a cost of \$75,000.)

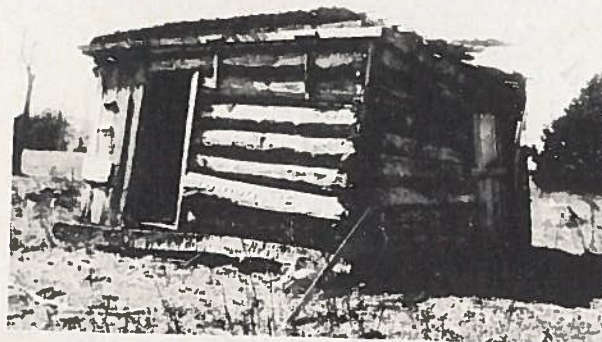
In 1846, Texas was annexed to the United States. For the next fifteen years Milam County heroes were mostly those who gave their attention to handling the Indian problem, and particularly do we remember with pride and praise the Texas Rangers of the period who gave their courage and skill to help shape the destiny of Texas. Among the famous Texas rangers and Indian fighters of Milam County who gave us one of our most illustrious heroes of the Civil War period in his son, was Shapley P. Ross, father of Lawrence Sullivan Ross. Ross was one of the earliest settlers in Milam County, and his cabin home was on the site of Cameron. The son was born in Iowa (1838) but came to Texas with his family at the early age of one year. In the notes of W. W. Oxshier on life in Milam County in early days is the following interesting mention of Ross: "I remember seeing one there (Old Nashville) at a horse race which I attended on the Fourth of July, 1840. He was then a boy and a rider in one of the races, which I think he won, this being the subsequently famous Indian fighter and distinguished Governor Sul Ross." Sul Ross attended school at Baylor, Waco, where his family finally made their permanent home, and, later, at Florence Wesleyan University in Alabama. In 1858, he organized a company of Indian warriors and went to the support of Major Earl Van Dorn, who was leading the United States troops against the Comanches. He took part in the battle of Wichita against the Indians, and in this battle rescued an eight-year-old white girl who was adopted by his mother and named Lizzie Ross. In 1859, Ross was placed at the head of a company of sixty Texas rangers. In 1860, in a battle with the Comanches on Pease River, Peta Nocona, the chief, was killed, and Ross discovered the chief's wife to be a white woman. She was identified as Cynthia Ann Parker, made captive by the Indians in childhood (1836). In 1866, Ross entered the Confederate army, and it is here, perhaps, that he deserved the name of hero most sincerely, for he entered as private soldier, and, on account of his deeds of daring, was soon promoted to the rank of Brigadier-General. He served throughout the war, took part in one hundred and thirty-five battles, and had five horses shot from under him. He was closely associated with Generals Johnston and Hood. After his return to Texas, he continued to interest himself in the affairs of state, serving as Senator (1881-1883), as Governor in 1886, and, finally, as president of A. and M. College until his death in 1898.

Milam County furnished her share of Confederate soldiers other than Ross, and in the roster of names of those who saw service were the following: Captain P. M. Kolb, Solon Joynes, Rev. W. E. Copeland, Captain Tracy, J. S. Perry, A. P. Perry, C. H. Coffield, Fred A. Graves, Captain J. B. Kemp, Dr. L. J. Turner, Captain L. L. Lee, and others whose records are not to be found at this late date.

From the time of the Civil War forward the story of Milam County has been one of consistent progress. Today "Matchless Milam" is one of the most outstanding counties of central Texas. Its improved highways, charming towns and villages, stately courthouse, efficient school system, colorful historic spots, and congenial populace all summed up together form what could be considered the "perfect" county of God's great Universe.

## Rockdale

Among the earliest settlers in this section was Dr. T. E. Riddle, who settled in the vicinity of what is now Cattail in 1867. Dr. Riddle passed away only a few years ago, having reached a ripe old age. In 1852 Captain B. M. Hutchinson settled about two miles northwest of the present site of Rockdale, where he built a log cabin and lived with his family until his death in 1894. This cabin is still standing in part, a gentle reminder of days of long ago.



Remains of cabin built by Captain B. M. Hutchinson in 1852.

In the latter part of 1872, news spread over the state that International & Great Northern Railroad was being extended from Hearne to Austin. Prospectors became intensely interested and soon entered the territory between these points, believing a good town would be settled somewhere along this line. Bryan, Hearne, Waco, and Austin were the nearest points of communication with this section of the county.

In the beginning of 1873, some sturdy pioneers with surveying outfits left Cameron in a southwestern direction to survey large tracts of land lying near Rock Prairie, about eighteen miles away. Later it developed that George Green, B. F. Ackerman and Frank Smith had sold to the International & Great Northern company four hundred acres of land on which to lay off a town. On September third a sale was had of lots, which had been laid out, with number, location, and boundary of each. Prospectors came from near and far on horseback or with ox team, carrying with them such supplies as were necessary for existence until some arrangement for local trade could be made.

E. S. Loper of Davilla and Evans and Brickhouse of Lexington were among the first to locate; Evans and Brickhouse were the first to open for business, where the Rockdale State Bank now stands.

Those who had settled here before the first train pulled in, were naturally curious to witness the arrival of that real live monster, as it would come roaring in. From near and far they came, and gathered at the quaint little station to greet the spectacle with frantic cheers and applause.

The track was completed on February 4, 1874. The first train from Hearne was loaded down with people, who brought their tents and provisions with them, for as yet no accommodations could be had. They came from city, town, and village, a varied assortment of humanity—hoarse, brave, and rugged men, coming to seek their fortunes in a new environment.

The first superintendent of the railroad was John R. Hoxie, with Henry Dickson as first ticket agent, and Homer Eads telegraph operator.

W. Hill Marshall of this city was one of the passengers on this first official train. He and his good wife have witnessed the growth and development of Rockdale, and recently celebrated their golden wedding anniversary.

The then nameless town was as yet only a small opening among the post oaks—a frontier town with stumps in the few streets which had been laid out. While it remained the terminus of the railroad, everything about the place was in that unsettled condition characteristic of new western towns.

The naming of a town was usually conceded to the railroad officials, but this honor came to Mrs. Ackerman of Cameron, whose husband, B. F. Ackerman, donated some part of the land on which the town was located, and for whom one of the main streets was named. Mr. and Mrs. Ackerman coming across country to the new town, passed an immense rock on a prairie about

two or three miles north of town—a rock about ten or twelve feet high, which must have been twenty-five or thirty feet in circumference. Mrs. Ackerman noticed this lone rock, and after arriving here and seeing the place was low with hills around, radiating as from some center, and remembering the lone rock, hit upon the idea of ROCKDALE, which she announced to the railroad officials; and that name they promptly accepted. So Rockdale, a name dear to the hearts of many, saw its beginning, and, with the swiftly passing years, was to witness phenomenal commercial and civic growth.

Among the first settlers were Thomas Fletcher, W. W. Harvey, and Frank Allen, who located on what is now the T. M. Williams' place. Mr. Fletcher improved the old J. M. Ousley homestead, where he established and operated the first mill and gin plants. This land is now owned by his daughter, Mrs. D. H. Sanford. Miss Ellen Fletcher, now Mrs. W. W. Harvey of Comanche, was quite a horsewoman and would ride at will over the prairie where Rockdale now stands with little thought of what the future held for that playground of hers.

At first tents had been put up to shelter the people who were here to build a town, but these were rapidly replaced by crude wooden or board structures. A row of business houses was built on Railroad Street, which was then the important street in the town. The carpenters and contractors were kept busy, and by the following summer one could count the number of painted houses on the fingers of one hand. One of these houses which still stands today was the home of Mr. Jack Stewart, afterwards the home of Mrs. Sue Hale. Mr. Stewart was a good carpenter, also a good singing school teacher.



W. E. Copeland home built in early nineties.



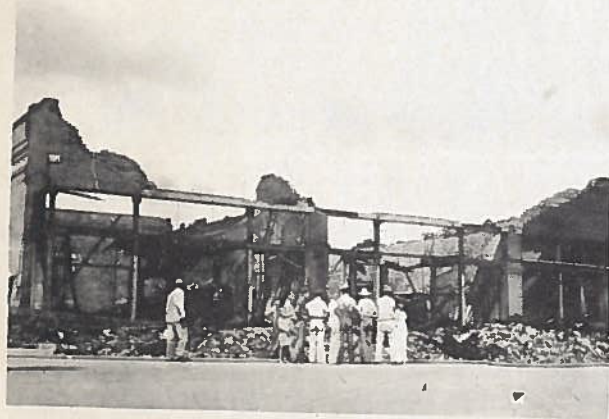
Late Mrs. Sue Hale home built by Jack Stewart in late eighties.

Business prospered, and during the two years that Rockdale was the railroad terminus it became the commercial center of Milam County, with a trade territory from the Brazos River to Georgetown and from Giddings on the south to above Belton and east toward Waco on the north. The board shacks were rapidly supplanted by brick buildings as business justified the change.

Quite a number of exciting events happened during those stirring days, chief among which was the arrival of the first circus in town. People came in wagon loads from great distances to witness the first circus of their lives, and by their awestruck and bewildered behavior proved more of a show themselves. But these rough and rugged people were "diamonds in the rough" and soon proved themselves the fine men and women of later days after contact with the outside world. Picturesque cowboys managed to ride to town often and added color and gaiety to the streets of Rockdale. Frank and Jesse James, the outlaws, visited here now and then, but always seemed in pleasant spirits and proved agreeable company. Negro revivals were popular in those early days, and quite a bit of complaint was noticed when such a revival ran for several months, beginning about twelve o'clock at midnight and closing in time for breakfast. The meeting continued, however, and developed a boy named Toliver, quite a genius for stirring the darkies up, who later landed in Washington City in charge of a large congregation. Another negro, Jim Jackson, a porter in a saloon and gambling emporium, was collecting contributions to build a church. He was active in this dual position for years, with many a successful gambler slipping Jim liberal contributions for LUCK, which enabled him to purchase the farm now occupied by the Worley Mines, upon which he raised the finest peaches in the country.

B. LOWENSTEIN AND BROTHER opened their first stock of goods here December 24, 1873. Beginning with a few handfuls of goods, valued around two or three hundred dollars, which they brought here with an ox team before the railroad came, they increased their stock of merchandise and groceries as the trade demanded. By hard work, honest dealing, and a vision of what the future held, they continued to prosper and grow, erecting several business houses and residences, and became leaders in the town. Joseph moved to Houston, and the business continued under the firm name of B. Lowenstein and Sons. B. Lowenstein was a member of the first public school board, was instrumental in having erected the German-English Academy, was vice-president of the old First National Bank, which he helped to organize, and later became postmaster of Rockdale under two administrations. He was succeeded by his son, Ben, Jr., who conducted the business left by his father, until his untimely death two years ago. Mrs. Ben Lowenstein, Jr., now heads this old-established firm.

E. M. Scarbrough, representing H. P. Hale and Company of Hearne, came from that town on horseback to Rockdale the latter part of 1873. He bought a lot on Main Street for one hundred and fifty dollars and erected a two story wooden house. When the new train arrived in February, 1874, H. P. Hale and Company opened for business in the town. The directors of the firm consisted of H. P. Hale with E. M. Scarbrough as silent partner, Jobe Hale, Green Wilson, and J. J. Dunnington as bookkeeper. The partnership lasted until the death of General Hale in 1882, when his estate having been wound up, the firm of SCARBROUGH & HICKS COMPANY was formed. Mr. R. H. Hicks, who had been with Hale and Company as bookkeeper, became partner in interest. Mr. Scarbrough remained in Rockdale until 1889, when he moved to Austin and opened a branch house in 1893. The houses at Rockdale and Austin were two of the strongest mercantile establishments in Central Texas, and stood, each in its respective place, at the head of the business interests of those cities. They continue to hold that enviable position today. Following the death of R. H. Hicks, his son John, R. L. Hale, Sr., and Omrad Palm were active managers of the business until January 1, 1913, when John Hicks and associates acquired the Scarbrough interests and sold out their interests in Austin. Following the moving of Messrs. Hicks and Palm to El Paso and the death of R. L. Hale, Sr. in 1919, the Scarbrough & Hicks Company was reorganized. In January, 1927, at a meeting of stockholders and directors, Ira Perry, J. W. Scarbrough, J. O. Newton, E. P. Henke, and J. W. Garner were named as board of directors. The entire mercantile establishment had been remodeled with an up-to-date plate glass front facing two streets sometime before 1919, and about a year ago considerable improvements were made on the interior. Then the disastrous fire in September, 1935, completely wiped



Scarbrough & Hicks Company after the fire in 1935.

out all that was once the pride and glory of the business district. But time does not stand still, and in January, 1936, the new business of Scarbrough & Hicks Company, under the ownership of J. O. Newton and Sons, opened up for business in the J. F. Coffield building on Cameron and Main Streets, and thus again this old firm continues to live in the hearts of the people.

The ROCKDALE BANK was organized in 1874 by Isaac Jalonick, representing Stowe and Wilmerding of Galveston. A corner lot on Milam and Main Streets was bought for three hundred dollars, the highest price paid for a lot

in those days. A bank building, eighteen by thirty feet was erected, which was replaced a year later by a two-story stone and brick building, the building later known as the Wolf Hotel, operated by Mr. and Mrs. A. Wolf.

The bank failed within a year or two and was bought by Wayland and Wheatley with C. E. Wynn as manager. Two years later these men sold to Judge J. S. Perry. Wynn was assisted by J. E. Longmoor, who had held the position of bookkeeper in the private banking house of Tracy Brothers until it went out of existence.

These institutions paved the way for the organization in 1890 of the First National Bank, with a paid-in capital of \$75,000. C. H. Coffield was elected President. B. Lowenstein, Vice-President, J. E. Longmoor, Cashier, Edgar Rowlett, Assistant Cashier, with R. H. Hicks, L. Isaacs, B. B. Baxter, and H. L. Witcher rounding out the board of directors.

On January 1, 1907, the ROCKDALE STATE BANK was organized with a capital stock of \$50,000, with B. Lowenstein as President, H. C. Meyer, Vice-President, W. L. Baird, Cashier, Fred H. Graves, Assistant Cashier, and S. G. Hodge, Dr. R. W. Wallis, Dr. A. C. Walker, and Harry Landa the other directors.

The Citizens State Bank was organized in 1912 with a capital stock of \$30,000. H. C. Meyer became President; J. S. Jacobs, Vice-President; E. A. Perry, Cashier; and E. B. Phillips, Ira Perry, G. M. Ryan directors.

A few years ago the Citizens State Bank, and still later the First National Bank, were taken in by the Rockdale State Bank, and this bank is now located in the old First National building. The present officers are H. H. Camp, President; T. B. Ryan, Active Vice-President; John T. Hale, Cashier; Harold Luckey, Assistant Cashier; and Poitevant Franklin, Dr. T. S. Barkley, E. A. Camp, W. E. Gaither, and T. B. Ryan are directors.

In the year 1873, Major W. M. McGregor and James A. Muir founded the MILAM COUNTY MESSENGER at Cameron, a weekly which soon won popular favor. When the then nameless town of Rockdale was being looked upon as a favorable place to invest, they built a home and transferred the plant and business to this place. During this time the paper was at its height, being published semi- and tri-weekly at times. Enock Breeding, together with his sister, Miss Nannie Breeding, purchased the MESSENGER about 1876, adding improved machinery; and then in March, 1877, the entire plant was destroyed by fire. However, it was re-established by May 25, 1877, only to burn again in April, 1891, when it was again promptly restored. For twenty-five years the people of Milam County had the benefits of a splendid newspaper, known for its strong editorials. In 1893 W. M. Ferguson bought the MESSENGER, changing its policies which heretofore had been Democratic to that of the People's Party. In 1900 the plant was sold to Howard Wilson and restored to the Democratic fold. After Mr. Wilson's death the paper was controlled by Mrs. Wilson and her sons, who finally sold it to R. W. H. Kennon of the ROCKDALE REPORTER, and it was launched under the merger, ROCKDALE REPORTER AND MESSENGER.

THE REPORTER had been founded by J. H. G. Buck in 1893, ceased publication for a while and was re-established by Homer D. Wade, then a youthful editor at Lexington. Wade sold the REPORTER to his associate, R. W. H. Kennon. Judge Kennon continued to direct the columns of the merged paper until June, 1911, when he sold out to John Esten Cooke. Mr. Cooke is known as one of the best country newspaper men in the State, and has had many honors come to his paper. He has extended the paper's circulation and each week edits a ROCKDALE REPORTER full of human, local interest and boosting "Regal, Rustling Rockdale and Matchless Milam."

In the year 1880 John Mundine of Lexington, wishing to invest his money here, erected the three-story brick structure on the corner of Main and Railroad streets, known as the MUNDINE HOTEL. In 1881 it was formally opened to the public under the management of Dr. and Mrs. W. A. Brooks, pioneers in the business, known and loved by all with whom they came in contact. The Mundine Hotel was destroyed by fire on June 8, 1888, and Mrs. Brooks and her four children, Willie, Brooksie, Harry, and Marion, lost their lives in the same building that had sheltered them for so many years. Only one man escaped, Mr. Oldhum of Austin, who could tell of the horror of that tragic fire. Dr. Brooks braved the flames in a vain effort to save his loved ones, but could not. Mr. D. H. Sanford was the hero of this great tragedy, grasping Dr. Brooks by sheer force, carrying him out of the building just in time to see the structure collapse. Other victims of the fire were Isaacs Crown, Pemberton Pierce, Mr. and Mrs. T. C. Brisco and their

three children. Dr. Brooks died many years ago in San Antonio and his body was brought here for burial by his sons, John and James.

Surveying was begun for the entrance of the San Antonio and Aransas Pass Railroad into Rockdale in the early nineties. The track was completed in 1893, and the first train was run into town, with A. J. Bashaw as first agent. L. A. Baxter is present agent. In 1926 the S. A. & A. P. was consolidated with the Southern Pacific Lines, but remains the "Sap" railroad to old patrons.

Druggists of the early days were George P. Winder, C. C. Howell, Isaacs and Lockett, W. R. Kennard, Gieseke and Hodge, W. E. Douthit, Clark and Perry, H. O. QUEBE and BALDRIDGE AND PREWITT are the two splendid, modern drug stores Rockdale possesses today.

The late Mrs. E. S. Loper was millinery artist for thirty-five years, selling out about twenty years ago to another pioneer artist, the present Mrs. Dora Poole. Mrs. Loper also had a dressmaking establishment and carried the famous old style magazines, *Godey's Lady's Book* and *Demorest's Magazine*, devoted "to the Artistic, the Useful, and the Beautiful."

John Scott was the veteran photographer of Rockdale, a real artist in his line. He was considered one of the best in this part of the country. He was succeeded by the McClintock Studio with Miss Lulu McClintock in charge. These two are about the only photographers Rockdale has ever claimed for any length of time.



Rockdale Main Street, July 4, 1916.

Vogel was the pioneer jeweler, and H. Bland and Son owned the first Jewelry and Bookstore. These were succeeded by James H. Hill, B. L. Douthit, and B. Regenbrecht.

Hughton and Robinson, A. E. Fullenwider, W. H. Richardson, H. Lockwood, and W. D. Bagley were the first lumbermen, and are today succeeded by Wm. Cameron & Company and Turner Lumber Company.

W. L. Lutner and Joseph Hooks were the first blacksmiths in Rockdale, and for many years ran their places in the same old stand, was finally sold to Louis Diehl, who continued at the same place until the property was finally sold to make way for the modern brick garage owned by W. P. Henry.

Max Ferrari today controls the longest established confectionery business in Rockdale. It was operated for many years by his late father, E. Ferrari.

Citizens must have lawyers to get out of legal entanglement, and Rockdale has been blessed with many a "skilled exponent of the Mosaic law." Among the first lawyers were James Breeding, Harry Tracy, Judge Fred Hill, Major Wm. M. McGregor, Long, Guy Hinman, Ben Bonart, John Absber, Kilpatrick and Kimbrough, A. G. Wilcox, J. S. Perry (state senator), Dr. A. C. Isaacs (representative), Henry Cone, E. L. Antony (congressman), N. H. Tracy (state representative), and later W. A. Morrison, Eugene Wallace, W. K. Clement, J. W. Garner, E. A. Camp, and Ed Gunn.

Among the early physicians who ministered to the ailments of the people were Dr. Connolly, David W. Broadnax, P. A. Horton, T. E. Riddle, W. A. Brooks, W. R. Kennard, Milton Antony, J. E. Douthit, George Prewitt, A. C. Isaacs, E. H. Gray, R. S. Wallis, D. R. Wallis, Q. C. Wallis, and A. C. Walker, who became noted surgeon of the Protestant Sanitarium of Fort Worth. These were, one by one, succeeded by I. P. Sessions, H. T. Coulter, R. W. Wallis, T. S. Barkley, and lately B. E. Laurie.

T. J. Avirett, Hunter Alexander, J. W. Allen, followed by G. B. Renfrow, P. E. Berndt, George B. Kincaid, and E. A. Swafford, were the popular dentists.

Rockdale is justly proud of her hardware and furniture stores. The J. F. Coffield Hardware and Furniture Store occupies the same location at which

1963

the late J. F. and C. H. Coffield had established business in the early eighties. The Henne and Meyer Company, that had been in business for the past forty years, was succeeded by E. M. Peeples and Sons in 1933.

Phillips and Luckey, Undertakers, long-time associates of the Henne and Meyer Company, have recently completed a handsome funeral home, the first in Rockdale. They purchased and remodeled the former J. Sid Hudson home, built in 1893, on East Bell and Burleson Streets.

Max and the jovial Pat Reilly were the pioneer bakers, followed by J. A. Stein, who had been in business for thirty-five years, when he was succeeded by his son, Otto.

Solon Joynes, commission merchant, weighed and shipped the first bale of cotton out of Rockdale. Other buyers were B. B. Baxter, W. A. Estes, J. H. Sparkman, Leo Strelsky, Valentine and Arnold, W. T. Coffield, Bryan Heard and J. W. Perry.

The Noack Abattoir, erected on the old D. H. Hunt homestead west of the city, is the only one in this territory.

Among other names who helped make Rockdale of today possible are: The Ackerman Dry Goods Company, Baum and Crohn, A. Kaiser, H. Goldsticker, John G. Brown, Max Blum, Leo Strelsky, John N. and Fayette Redding, Berry Loper, E. S. Loper, Hyman Block, A. Young, Valentine and Arnold, Solon Joynes, Coffield and Dunnington, J. S. Walden, Isaacs and Lockett, L. Box, W. A. Estes, J. M. Ousley, B. B. Baxter, J. R. Rowland, Richard Ames, John Randle, John Lyons, Woody and Berry, W. A. Gentry, L. J. Porter, Cyrus Edwards, A. Wolfson, H. & L. Hudson, T. B. Kemp, George B. Randle, John Dunnington, W. C. Wright, Joe Hawkins, Hamblen and Porter, August Schaffer, James Wicks, Tom Hudson, J. Sid Hudson, Dan and Hyman Lasker, N. H. and Harry Tracy, Joe Sitman, James H. Hill, Standifer, Robert, Steve, and John Wilson, C. A. Duffy, Jake Pettyjohn, Fred and George Graves, Cebe Houghton, W. H. Bagley, Henry McGowan, Tap York, John York, D. C. York, J. B. Hamilton, James and W. P. Branch, Vineyard, Perry Hale, El Smith, J. P. Linn, T. F. and D. P. Hewitt, Abe Steinberg, C. E. Wynne, W. H. Marshall, Frank Allen, A. Wolf, J. R. Arthur, T. M. Freeman, John Freeman, Sparkman and Lee, Busby, Chas. Reed, Tom Reed, Arthur Collins, Thomas Prewitt, J. E. Longmoor, W. M. Ferguson, F. C. Kinney, B. T. Middleton, Chas. Heidenerich, W. F. Jones, Max Ross, C. K. Robinson, Theo. Schirmacher, Max Winterberg, Kincaid, Fowler, T. H. Paul, Dave Harris and sons, Clark and Wells, C. K. and Cleve Stribling, D. W. Broadnax, J. P. Kevil, A. P. Perry, M. S. Riglander, John Fears, Moffitt and Hefley, P. Sass, Leach Grocery, A. H. Gladdish, Rasberry, Stevens, McCalla, Sprott, Wallis, Turner, Clark, Dudley, Rice, Worley, Beathea, Simms, Arnett, Armstrong, Millican, Sherar, Hillyer, Williams, Wash Wilson, Davis, Shappard, Foster, McGuyer, Rexford Wells, W. M. Wells, Hall, Baines, Douglass, Orr, Turnham, Aldridge, Tom Williams, J. C. McCawley, J. S. Bonner, Minor H. Brown, Bernard Gary, George Vandeventer, John Cole, Frank Block, Eads, Castleberry, Dan Wooten, J. J. Hairston, A. J. Bell, Kennard, Harvey, Beck, Lewis, Evans, Vogel, Henry, Lockwood, C. H. and J. F. Coffield, W. E. Copeland, J. H. Stribling, and Frank Hubert.

There are about one hundred and ten businesses in Rockdale, including the ones mentioned, and in addition an ice factory, electric oil mill, several cotton gins, an up-to-date moving picture theatre, confectioneries, cafes, a bakery, modern grocery stores, and any number of small businesses, together with many modern gasoline filling stations, representing the various major oil companies.

The Rockdale mines are said to be among the largest in the United States. These mines have been operated for over forty years, and many a ton of lignite has been shipped from here to all parts of the State. At one time there were five shaft mines and one strip pit.

The Rockdale-Minerva oil field created a great deal of excitement in 1920, and extended operations to within sight of the city. At times excitement dies down, only to be stirred up again with the drilling of another test. A few undaunted citizens are still hopeful of an oil boom in the future, when Rockdale will be put on the map forever.

The Rockdale Volunteer Fire Department is composed of sturdy citizens, who boast of having one of the most complete engines and fire-fighting apparatus in the State. Recently during the disastrous Scarbrough & Hicks Company fire, when that firm was completely destroyed, two young Rockdale men, John W. Hooper and Wilbur Williams, lost their lives. Their heroic deaths will be permanently commemorated by the opening of a park to be known as the Hooper-Williams Fireman's Memorial Park. This park will be located on two acres of ground west of the waterworks property on Highway 44.

The Rockdale Fair was organized in 1908, and ran successfully for a number of years. At one time it was considered the third largest fair in Texas, and was the pride of every citizen in and near Rockdale. The association was



incorporated and owned a park of thirty acres, covered by hundreds of immense oaks. Large and attractive exhibition buildings, grandstands, barns, and stalls dotted the grounds in attractive arrangement. In 1911 H. C. Meyer was President; John Hicks, Vice-President; A. P. Perry, Jr., Secretary; R. L. Hale, Treasurer; with George Banzaph, L. Isaacs, O. K. Phillips, S. G. Hodge, J. F. Coffield, Jr., and W. E. Gaither as board of directors. In later years lack of interest, financial loss and "hard times" caused the Fair to lose out. The park is now used by the American Legion for Fourth of July celebrations and other entertainments.



Home of Mr. and Mrs. T. B. Ryan.

The City Hall was built in 1895 during the time that B. A. Coffield was mayor, with J. G. Brown, O. A. Bowen, Lee Wallace, and E. L. Rasberry as councilmen. E. A. Wallace was city attorney; L. Isaacs, secretary-treasurer; J. B. Hamilton, marshal; and J. H. Burnett, tax assessor. At that time it was large enough to accommodate the crowds who assembled in the auditorium for social gatherings, school commencements, and political meetings; but of late years the building has lost its former splendor, and is now used only for athletic purposes and a few high school dances. These affairs will soon be held in the new auditorium being constructed on the high school campus, and the City Hall will have served its purpose. The tax collector's office and the fire department are housed on the lower floor.

Ever since Rockdale has been incorporated, it has had some strong, able men as mayors, the first of these being Alfred A. Burck, who in turn was followed by Hugh L. Witcher, W. E. Copeland, E. M. Scarbrough, Dr. W. R. Kennard, J. S. Perry, B. A. Coffield, J. E. Longmoor, H. F. Snively, C. H. Coffield, H. C. Meyer, W. E. Gaither, and E. A. Camp, the present, very efficient head of the town. Mr. H. C. Meyer, now with the State Board of Control, heads the list with more years of service, having served faithfully and well for over twenty years. Mr. Meyer was justly called the father of good roads in this section of the country, and had much to do with improvement of highways and byways in this wide territory.

Leonard Isaacs was city secretary for thirty years, and was succeeded by J. Frank McCalla, who served next in length of time as city tax collector and treasurer. E. T. Kemp, city secretary and treasurer, was succeeded by J. Branch Lewis, the present incumbent.

Judge Fred Hill served as first justice of the peace, and was followed by W. D. Wells, R. W. H. Kennon, Ed Gunn, Roy Hillyer, and the present incumbent, Leo Harris.

Officers of the law included J. E. Holtzelaw, C. C. Bethea, John R. Arthur, Howard, Eb Aldridge, N. J. Altord, and John H. Bonds, who held that place for many years. At present W. C. Colvin and Night Watchman C. H. Landis look after the welfare and safety of the town.

Uncle Sam has appointed some valuable men to look after the postal department in Rockdale, one of the earliest postmasters being Donneke; then came

H. C. Travers, W. B. Woody, Hugh L. Witcher, E. J. M. Hopkins, B. Lowenstein, Sr., J. A. Shappard, H. P. Talley, E. T. Wade, and the present incumbent, H. H. Turner.

In the early days of Rockdale private cisterns or tank cisterns furnished water for the town, and there were a few wells for home use, but these were mostly spoiled on account of minerals. Lamps were the order of the day. Mr. R. H. Ames owned the first electric light plant and later sold to Lenard Isaacs, who owned the light and water works for a number of years. The city later purchased the water works and improved it until today Rockdale has two of the deepest, finest wells with underground and tower reservoirs of 110,000 gallons capacity. The Texas Power and Light Company furnishes power and electric light from three high voltage lines, which insures uninterrupted service to its customers. The Southwestern Bell Telephone system dots the land, and the Western Union Telegraph Company maintains an uptown office besides tower service.

The latest convenience that was acquired in the town was natural gas, piped in by the Community Gas Company of Dallas. Construction began May 1, 1928, and the piping of the city being completed, gas was pumped into the mains on September 5, 1928.

The paving program was completed in September, 1929, and Rockdale now has more than six miles of concrete paved streets with uniform curbs to match, covering the entire business district and a major portion of the residential districts. The Rockdale of today presents a beautiful picture with streets lined with magnificent trees, lovely and substantial homes with green lawns and well-kept shrubs and flowers greet the eyes on every side. In the last few years a number of fine brick homes have been constructed.



Home of Mr. and Mrs. Eddie Noack.

Churches have not been mentioned so far, but Rockdale has some lovely church edifices, of which the citizens are justly proud. After the people became permanently settled in homes and businesses and felt established, they then turned to the building of comfortable homes of worship, but the work in each field preceded the building. All evangelical denominations were represented in the early days of Rockdale, and the first church service was held over W. P. Branch's dry goods store. It was a bare room, the rafters covered with dust and spiderwebs. Boards across empty beer kegs served as seats; singing was led by Mr. Jack Stewart, with his tuning fork and choir of singing school pupils. Mr. Vandivere, a Baptist preacher, conducted services. Most of the services were conducted in the old Presbyterian church, known as the Union Church Building. Rev. W. E. Copeland, living in Washington County at that time, made monthly trips to Rockdale to minister to his little flock. Rev. Copeland was born in Scotland, came to Texas in 1858, and as early as 1874 came to Rockdale. In 1880 he moved with his family here and supplied the pulpit from year to year until his resignation a few years before his death. He lived to become pastor of the handsome new building that stands on the grounds of the First Union Church, which was erected under his guidance and dedicated with elaborate ceremonies on April 19, 1914, with the united clergy and throngs of people assembled to witness the dedication.

Other active ministers of the early days were the Rev. B. B. Baxter, who was a passenger on the first incoming train and who helped to organize the First Baptist Church; Rev. Beasley of the Methodist Church; and the Rev. Edwin Wiggins of the Episcopal Church. Two outstanding ministers, the Rev. James H. Stribling and the Rev. George Baines, served as pastors of the Baptist Church. The first revival of any note was held by the great evangelist, Major Wm. E. Penn, who, together with his singer, Mr. Parker, captured the town. The historic Penn Camp Ground at San Gabriel was a favorite meeting place for those of all creeds.

Some years after the old Presbyterian Church was built, St. Thomas Episcopal Church was erected on property where the old Solon Joynes home stood. This home was destroyed by fire and Mr. Joynes gave the lot to the church. Then followed the Baptist, the Methodist, and last the Christian Churches. St. Joseph's Catholic Church was erected on a lot donated by Leopold A. Strelsky, Sr., who, with his family, had located in 1870 on a farm some three miles north of Rockdale. The Lutheran Church was established some years later. All have ample and handsome edifices, good choirs, Home and Mission Societies, and good Sunday Schools, and the pulpits are supplied by able, good, and intelligent ministers.

And so we say farewell to the past; and look with hopes to the future of a greater, bigger and more successful Rockdale.



## Rockdale Public School

In 1874, a few weeks after the I & G N railroad reached Rockdale, the first school in the town was organized by a Miss Molly Roby. Miss Roby taught for six months, and though realizing the lack of educational advantages, she was finally forced to give up on account of poor patronage.



Mrs. R. H. Hicks, El Paso, Texas.  
The former Miss Maggie Hall, first teacher in Rockdale schools.

It was not until the following fall that an attempt was made to reorganize the first school. Miss Maggie Hall, a slight, girlish, young lady, who had attended Baylor University down in old Independence, and who had taught several years in the Bryan Public School, felt the great need of education for the young. So in September she opened a private school in one small upper room of a house owned by Mrs. Cole, located where the Matson home now stands. Miss Hall taught her little school for the nine months term of 1874-75.

The town had been incorporated, and the citizens decided it was time they should have the benefits of the public schools that had been secured for Texas under the administration of Governor O. M. Roberts; so the council appointed a board of trustees consisting of Dr. W. A. Brooks, R. H. Hicks, Rev. J. H. Stribling, A. E. Fullenwider, Dr. A. C. Walker, Rev. W. E. Copeland, with E. M. Scarbrough, (Mayor, Ex-Officio) chairman—a strong sturdy group of pioneers.

We could not add fins to this bit of history of Rockdale without saying something about its social life. In the old days the Mundine Hotel became known far and near and was the social center for newer Rockdale. A social club was organized by the young men and brilliant affairs were given. The officers were H. C. Travers, president; Minor H. Brown, secretary, with the assisting committee being composed of J. E. Longmoor, Homer Eads, L. H. Porter, Frank Block, Isaac Crown, Leo Wolfson, Phil Dunnington and others. In June, 1882, Dr. and Mrs. Brooks of the Mundine celebrated their silver wedding anniversary and the reception was conceded to be the most brilliant in the history of Rockdale. The old Mason Hall, and later the Randle Opera House were other centers of social gatherings. No set forms were observed and entire families would attend these delightful entertainments. The town was full of young married people. The old Presbyterian Church which served all denominations was a gathering place for the young folk on Sunday afternoons. Rockdale is today represented by lodges and women's circles, benevolent associations and the patriotic organizations of Camp Sam Davis No. 1169, U. D. C. Chapter and American Legion Carlisle Post No. 358.

An old abandoned storehouse at the corner of Cameron and Green Streets was appropriated, and the public school of Rockdale was launched. Very meager indeed were the furnishings of this first school. Miss Hall, who had been elected assistant teacher, had a small desk at the front of the room, while Mr. W. Wyatt, who was principal, had a small platform at the rear of the room. Mr. Wyatt's only recommendations were that he was a Confederate soldier and he could "wallop" the boys. His platform was equipped with a desk, a box of sand used as a cuspidor, and a bundle of switches. The principal's general attitude and the sight of the switches aroused the resentment and tears of the pupils. However, under these primitive conditions the first public school of Rockdale dragged through its first session.

One term for Mr. Wyatt was enough for the school board; so Mr. Brickhouse was elected to be the principal for the new term. Miss Hall again accepted the position of assistant. Mr. Brickhouse conducted the school in such a way as to gain the respect and confidence of both the pupils and parents, despite the fact that the same poor old building and equipment were used. He was a clean, quiet gentleman of middle age, a widower with five children.

At the beginning of the next term Miss Hall resigned her position and built a small schoolhouse on the site of Conn R. Isaac's present home. There she taught a private school for girls. Mr. Brickhouse taught this session alone in the old building, which now almost amounted to a boys' school, as most of the girls attended Miss Hall's school. At the close of this term the council offered to rent the new building of Miss Hall's for the use of the public school and elect her as principal. She gladly accepted this offer, and for the next two years school was conducted under these circumstances.

Following the close of school in the spring of '79, Miss Hall resigned and was married to Mr. R. H. Hicks. Mr. and Mrs. Hicks continued to be identified with the social, religious, educational and business interests of the town, serving in many capacities throughout the years.

School attendance was growing rapidly. The trustees, realizing the need for a larger building, rented the old Brooks Hotel on the corner lot where now stands the J. L. Lockett home. Mr. G. W. Rainwater, as principal, and Miss Ella Meekin (the late Mrs. A. H. Wilkins), as assistant, were in charge of the classes and proved competent teachers. The school grew and prospered under their leadership for the next two terms, after which the hotel was bought by Mr. Lockett.

We might add here that there were a number of private teachers in those early days. Mr. O. F. Rogers, a maternal grandfather of Mrs. H. T. Coulter, a Presbyterian minister of the old school, organized and taught a private school in a church building which served the needs of all denominations. This building was where the Presbyterian church now stands. Here also a Mr. Waddel, an Episcopal minister, conducted a private school. The section around

the church building was still timberland, and the story is told that here, red-headed Mr. Waddel was often seen with a switch chasing the "bad boys" of the school out among the trees, trying to catch and punish them. Other teachers in the early and later stages of the private schools were Miss Nannie Breeding and her sister, Mrs. Crabbe, and Miss Ellen Ghent. The Jews for a number of years conducted the German-English Academy, with Professors Hammon and Berlinger in charge. It occupied the site of the R. L. Hale home and was sometimes used as a synagogue.

But back to the public school. After the sale of the Brooks Hotel, the school was moved to the Methodist church, where Mr. James Kennard, a nephew of Dr. W. R. Kennard, a much-loved physician in those days, and Mrs. R. H. Hicks conducted classes for another term, at the close of which they resigned. Miss Meekin and Miss Sallie Kennard were appointed for the next term.

Conditions were improving, but the citizens realized more and more the need of a school building large enough to accommodate the ever-increasing number of children. It was about February 5, 1883, that the first official board of trustees was elected by the people. This board was composed of A. E. Fullenwider, R. H. Hicks, C. H. Coffield, James H. Hill, Sr., Ben Lowenstein, Sr., Rev. J. H. Stribling and Rev. W. E. Copeland.



First high school building.

The new board immediately got busy; bonds to the amount of \$10,000.00 were issued and plans laid for a modern new brick building to be built on the beautiful hill west of town, later to be known as College Hill. These were great days for Rockdale. The building was completed about the time Grover Cleveland was elected for his first term as President of the United States. A great double celebration was planned, and when the day arrived and the new school building was pronounced ready for inspection, a huge gathering was held up on the hill, and there were speeches, handshakings, and general rejoicing by young and old.

Mr. J. W. Clark, a native of Virginia, who attended Virginia Military Institute and Emory and Henry College of Virginia, and who had taught at Austin, Bastrop, Bryan, and Navasota, was elected superintendent of the new school with a principal and a fine staff of teachers. Mr. Clark served as superintendent for eight years with intelligence and devotion, and helped to establish an educational institution fully graded and affiliated with the State University. Since this earliest period it has been recognized as one of the best small schools in the state.

Mr. Clark resigned as superintendent and moved away in 1890, when Mr. F. L. Norton was elected to fill his place. Mr. Norton successfully piloted the affairs of the school for the next nine years. During that time his wife died, leaving him with seven children. He moved to Denison, where he remarried and still resides.

About this time Mr. C. E. Brennan, a forceful young man with very modern ideas, became head of the schools. The modern ideas did not appeal to many, and after election of superintendents, Mr. Clark was recalled and accepted. This time Mr. Clark taught until 1910, when he moved to Georgetown, where he passed away a few years later.

Mr. C. G. Green, a quiet, refined gentleman, very diplomatic and understanding, reigned modestly and well from 1910 to 1919, when he moved away. Mr. G. L. Marshall successfully carried on the affairs of the school for three years, 1919-1922. It was during his time that the need for a larger school building was again realized, and in 1922 the new, very modern \$75,000.00 brick, fireproof building was constructed. At the same time the old building was turned into a modern, one-story primary building. And once again the people of Rockdale felt that ample provision had been made for the education of their future citizens. The trustees at this time were Fred H. Graves, John E. Cooke, W. A. Coffield, T. D. Rountree, Ben Lowenstein, Jr.,

C. R. Isaacs and E. B. Phillips. The city council was composed of Mayor H. C. Meyer, and Aldermen P. H. Perry, Sr., A. P. Perry, Jr., L. W. Sledge and E. H. Coffield, with City Attorney E. A. Camp, and City Secretary, E. T. Kemp. Mr. Marshall served through 1922, when he moved to Grandview where he died in 1925.

In 1922-23 Mr. J. M. Hodges was Rockdale's superintendent. After leaving Rockdale Mr. Hodges moved to Tyler, where he is still connected with the Tyler schools and Junior College.

Mr. C. G. Green returned to Rockdale in 1923 to conduct the affairs of the school. He is now in Hamlin, Texas, heading the schools there.

Mr. A. W. Franklin served as superintendent during 1924-25, when he resigned and became superintendent of the Junior High School at Wichita Falls.

In 1925-26 and 1926-27 J. C. Wilkerson became superintendent. Mr. Wilkerson is now editor of the "Chief" at Comanche.

Mr. S. P. Conn who is now with the schools at Floresville served as head of the schools in 1927-1928.

In 1928 Mr. S. C. Miles, the present, much beloved superintendent, came to Rockdale, and by his steady devotion and kindly interests in the affairs of the schools and the pupils, has built up the school within the last eight years to an envied position. During this time one teacher has been added to the faculty of the Primary School. During 1929-30 the Home Economics Department was enlarged by adding a fully equipped dining room. Some of the courses have been revised and the Library improved. In 1933-34 the campus was terraced and beautified. The Vocational Agriculture Department was added to the school system in 1933, and during the summer of 1934 a plot of ground was purchased, and a beautifully lighted football field and athletic park was provided for athletic purposes. The term of 1934-35 saw the addition of a commercial department to the high school curriculum; a full time librarian was added to the faculty; and the stage was equipped with a beautiful rose velour curtain. Five school busses have been secured, bringing children in from the rural districts. The year 1936 sees the schools of Rockdale provided with a beautiful new auditorium building which will be used as a gymnasium and perhaps for additional class rooms.



Group of students at The Little Music House on school campus.

We could hardly fail to mention the part music played in the education of the youngsters. There were a number of private music teachers in those pioneer days as well as the later and present times. One of the first of the private teachers was a Mrs. Kreutter, who taught German in the public school and music in a private home. Mrs. Kreutter was a graduate of the Conservatory of Music of Boston, and came here from New York. There was also Miss Fannie Rugeley, Mr. Milton Ragsdale, Miss Mary Hill, a Mrs. Morsheimer, Miss Lulu King, Mrs. Crable, Mrs. W. T. Wright, and later Mrs. C. M. Perry, Mrs. W. C. Marris, Mrs. M. R. Reddell and Mrs. L. W. Sledge. The trustees some time during 1900-05 built a one room house on the southwestern part of the campus to be used for the teaching of music, which for many years was a hanging out place of the students at recess and noon, and many pleasant gatherings were held in and around this little music house. Miss Sammie Osborne was the first music teacher to be elected; she was followed by Miss Nell DuBois (Mrs. Stevens, Tucson, Ariz.), Miss Grace Longmoor (Mrs. W. A. Coffield of Waco), Miss Norris Walls (Mrs. B. C. Tharpe, Austin), and Miss Margie Lockett (Mrs. L. W. Sledge). The little music house did not last so many years; it was torn down and thereafter music teachers taught in private homes.

Some of the trustees who no longer serve on the board and have not been mentioned, but who have been interested in the affairs of education, and who have given, and some still do, of their time in service to the Rockdale schools are Messrs. J. E. Longmoor, A. P. Perry, Jr., Emmett Kemp, Ira Perry, G. M. Ryan, J. T. Beasley, W. L. Baird, E. A. Wallace, I. P. Sessions, J. W. Garner, C. K. Stribling, Ed Gunn, Ed G. Simms, W. B. Smith, and C. M. Sessions.

The personnel of the school board has changed every two or three years; to the present board, as well as to those of other days, we would say, "Well done, my good and faithful servants."

See List '55 for other graduates

ROSTER OF ALUMNI OF ROCKDALE HIGH SCHOOL

CLASS OF 1886  
Mary Hill—Mrs. Walter Moore, Houston, Texas  
Minnie Kinnard—Mrs. Davis, Dallas, Texas  
Lizzie Baines—Mrs. H. C. Stiles, San Marcos, Texas  
Fannie Stribling—Mrs. W. A. Morrison, Cameron, Texas  
Gussie Rowlett—Cameron, Texas  
Mary Robinson—Mrs. A. F. Bounds, Huntsville, Texas

CLASS OF 1887  
No Graduates

CLASS OF 1888  
Laura Allen—Mrs. B. H. Griffin, Brawley, California  
Allie Davis—Mrs. Will Gilliland, Cameron, Texas  
\*Frankie Richardson—Mrs. John Gerguson, Texas  
Porter Valentine—Mrs. G. M. Edmundson, Dallas, Texas  
\*Cornelius K. Stribling  
Mary Kinnard—Austin, Texas  
\*Annie May Coffield—Mrs. J. H. Burnett  
Ida Redding—Mrs. J. Lee Penn, California  
\*Rufus Mathis  
\*Robert Copeland

CLASS OF 1889  
Emma White—Mrs. H. D. Kone, Austin, Texas  
Lillie Robinson—Mrs. Richard Moore, Pilot Pinto, Texas  
Minnie Randle—Mrs. S. G. Little, Hagerman, New Mexico  
Ione Middleton—Mrs. J. D. Hudson, Beaumont, Texas  
E. A. Wallace, lawyer, Cameron, Texas  
Hal C. Darden  
Robert Lowenstein—New York City  
\*Sam S. Woody

CLASS OF 1890  
Edwin J. Douglas—Taylor, Texas  
\*Jas. H. Hill

CLASS OF 1891  
Joseph L. Lockett—Lawyer, Houston, Texas  
Bertie I. Loper—Mrs. Robert Lowenstein, New York, N. Y.  
\*Beulah I. Loper—  
Mary J. Copeland—Mrs. C. K. Stribling, Rockdale, Texas  
\*John J. Joynes

CLASS OF 1892  
Glennie Wilson—Mrs. W. T. Corby, Calvert, Texas  
Gertrude Wallace—Mrs. W. P. Conaly, McGregor, Texas  
Leonard B. Isaacs—New Orleans, La.  
Mary Baxter—Mrs. Wm. M. Wells, Temple, Texas  
Kate Walden—Mrs. Jas. H. Hill, Rockdale, Texas  
\*Minnie Barnett—Mrs. F. P. Mallory, Austin, Texas  
Annie Hawkins—Mrs. L. L. Albertson, San Antonio, Texas  
Henry Tompson—Thrall, Texas  
Edgar Perry—Austin, Texas  
Eula Raspberry—Mrs. C. M. Sessions, Rockdale, Texas  
Addie Cone—Mrs. Robert Isaacs, Georgetown, Texas

CLASS OF 1893  
\*Annie Washburn  
John Henry Miley—Bastrop, Texas  
Mamie Lewis—Mrs. H. W. Wallace, Cuero, Texas  
Minnie Alexander—Mrs. Theo Fulcher, Thornsedale, Texas  
\*Ella Hill  
\*Willie Woody—Mrs. W. B. Peake

CLASS OF 1894  
Edna Branch—Mrs. H. T. Coulter, Rockdale, Texas  
Zelda Branch—Mrs. C. L. Kalp, Kansas City, Kan.  
Nellie Wallace—Mrs. G. M. Ryan, San Antonio, Texas  
Clyde Loper—Real Estate Loans, Dallas, Texas  
Moselle Baxter—Mrs. W. D. DeGrassi, Amarillo, Texas  
Johnny Houghton—Mrs. Bob Russel, San Angelo, Texas  
\*Johnny McKnight

CLASS OF 1895  
No Graduates

CLASS OF 1896  
\*Mattie Clement—Mrs. Chas Saller  
Bessie Simms—Mrs. O. K. Phillips, Rockdale, Texas  
Eugene Tracy—Bookkeeper, Houston, Texas

CLASS OF 1897  
Bernice Fairburn—  
\*Idella McGowen—Mrs. Chas Flynn  
Mrs. Bell Valentine—Mrs. C. P. Jones, San Antonio, Texas  
Edith Hillyer—Mrs. Geo. M. Well, Santa Fe, New Mexico  
\*Luna Duboise  
Bessie Sterly—Mrs. John Sharp, Rockdale, Texas  
Etha Perry—Mrs. Landis, San Antonio, Texas  
Knox Bunting—Baytown, Texas

CLASS OF 1898  
Minnie Crout  
Minnie Box—Mrs. Walker, Ft. Worth, Texas  
Lottie Simms—Mrs. R. C. Wallis, Rockdale, Texas  
Hester Joynes—Mrs. Hulen Means, Silver City, New Mexico  
Claudia Tracy—Mrs. W. J. Werner, Palestine, Texas  
Ruth Pleasant—Mrs. H. C. Crawford, Quannah, Texas  
Maudie Prewitt—Mrs. L. G. Culp, Rockdale, Texas  
Jones Clement—Thorndale, Texas  
\*Joe Riddle  
Jim F. Chadwick  
John C. Scott  
Thomas Davis—Houston, Texas

CLASS OF 1899  
Kate Woody—Mrs. S. B. Perry—Beaumont, Texas  
Dora McGuire—Mrs. A. C. Tombs, Washington, D. C.  
Margie Lockett—Mrs. L. W. Sledge, Rockdale, Texas  
\*Hugh Longmoor  
\*Roger Perry  
Gussie Castleberry—Center, Texas  
Murphy Buse—Mrs. F. E. Wilcox, Georgetown, Texas  
Della Foster—Mrs. J. C. Woody, San Gabriel, Texas  
Ruth Gentry—Mrs. H. C. Meyer, Austin, Texas  
Virgil Buse—Mrs. W. L. Linbron, Kingsville, Texas  
\*Lena Jones

CLASS OF 1900  
Minnie Hairston—Mrs. Lee Orr, Rockdale, Texas  
Adel Walden—Mrs. Chas. J. Simpson, Houston, Texas  
\*Kitty Tracy—Mrs. Bethea  
Ethel Gladdish—San Antonio, Texas  
Maude Bonds—Rockdale, Texas  
Souder Riddle, Waterford, California  
\*Lora Boulter

CLASS OF 1901  
Bertha P. Jers—Mrs. Frank Barlow, Austin, Texas  
Etta Loper—Mrs. Fred Graves, Rockdale, Texas  
Ola Simms—Mrs. C. F. White, San Lorenzo, New Mexico  
Elma Hewitt—Mrs. Geo Colgate, Houston, Texas  
Georgia McKnight—Mrs. Wilson, Dallas, Texas  
Alice Lockett—Mrs. R. M. Penick, Austin, Texas  
Annie Knight—Gonzales, Texas  
\*A. E. (Tink) Perry  
Lyndon Ray—Dallas, Texas  
Earle Longmoore—Kansas City, Mo.  
Leon Raspberry—Houston, Texas

CLASS OF 1902

\*Lola Perry  
Lena Perry--Mrs. E. E. Shropshire, Austin, Texas  
Edgar Turner--Ft. Worth, Texas  
Cornelia Norton--Mrs. J. M. Sheppard, Shreveport, La.  
Wallis Paul--Dentist, San Antonio, Texas  
Kate Valentine--Mrs. E. E. Mathews, Snyder, Texas  
Robert Buse  
Vaughnie Dudley--Rookdale, Texas  
Florence Farmer--Mrs. G. W. West, Tampa, Fla.

CLASS OF 1903

Frank Hicks--California  
Fannie Stevens--Houston, Texas  
Bruce Gentry--Civil Engineer, Yuma, Arizona  
James W. Hamilton--Ft. Worth, Texas  
Chas. Baxter--Chicago, Ill.  
Harry Ames--Houston, Texas  
Hale Walker--El Paso, Texas  
Stanley Longmoor--Dallas, Texas  
Henry Porter--Civil Engineer, Austin, Texas  
Hunter Shearer--Rookdale, Texas  
Lida Robinson--Mrs. Stewart McFarland, Washington, D. C.

CLASS OF 1904

Conn R. Isaacs--Rookdale, Texas  
May C. Clark--Gov. Clerk, Washington, D. C.  
Annie May Schafer--Houston, Texas  
Harold Willson--Houston, Texas  
Stella M. Lightfoot--Mrs. W. C. Boyd, Denton, Texas  
\*Carrol Woody  
Louise Loper--Mrs. Tom Ogletree  
Ora Stevens--Mrs. D. Bunn, Dallas, Texas  
Dell Simms--Mrs. Conn Isaacs, Rookdale, Texas  
Vaughn Paul--San Antonio, Texas  
Minnie Foster--Port Arthur, Texas

CLASS OF 1905

Grace Longmoor--Mrs. W. A. Coffield, Waco, Texas  
Mary Williams--Mrs. Sam Holman, San Gabriel, Texas  
Lester Turner--Thorndale, Texas  
Johnnie Shapard--Mrs. B. B. Whatley, Rogers, Texas  
Lala Fulton--Mrs. Boone Neering, West, Texas  
Lurline Holtzclaw--Mrs. Judd Davis, Cameron, Texas  
Lucy Hastings--Mrs. Will Mathews, San Antonio, Texas  
Robbie Wallis--Mrs. Will Arms, Austin, Texas  
Jewel Moses--Mrs. P. E. Berndt, Bellville, Texas

CLASS OF 1906

Minnie Sprott--Teacher, Dallas, Texas  
John W. Davis--Knippa, Texas  
Irma Valentine--Mrs. H. J. Kitohnor, Houston, Texas  
Ethel Calloway--  
\*John Kincaid  
\*Cyrus Joynes  
\*Robert Lee Hale  
Bertie Wooton--Mrs. J. R. Davis, Knippa, Texas  
Mary Hewitt--Mrs. L. L. Farley, Houston, Texas  
Irma Porter--Teacher, Cameron, Texas  
Cora Bethea--Mrs. W. B. Hughes, Portland, Oregon  
Avonia Stribling--Mrs. C. H. Jones, Austin, Texas

CLASS OF 1907

\*Newman Stribling  
Jessie Sessions--Mr. T. Beasley, Houston, Texas  
Tot Walden--Mrs. R. D. Tindall, Waco, Texas  
Norris Wallis--Mrs. B. C. Thorpe, Austin, Texas  
\*Kittie Brieger  
John Clark--San Benito, Texas  
Eva Glen Fulton--Mrs. T. T. Mart, Houston, Texas  
Annie C. Loper--Mrs. B. N. Stitt, Houston, Texas  
Beaula Raspberry--Mrs. Ed Clark, Thorndale, Texas  
Nettie Turner--Teacher, Rookdale, Texas  
Lerline Wilson--Tulsa, Oklahoma

CLASS OF 1908

\*Annie McCalla  
Alice Graves--Mrs. T. S. Barkley, Rookdale, Texas  
Clara Clymore--Mrs. O. D. Graham, Thorndale, Texas  
Jewel York--Teacher, Dallas, Texas  
Ruth Isaacs--Mrs. H. Tidwell, Graham, Texas  
Susie Garrison--Mrs. Rolan  
Lon Hudson--New York  
Leroy Ashby--Little Rock, Arkansas  
Herbert Branch--Dallas, Texas  
Howe Riddle--M. D., Cowata, Oklahoma  
Oscar Eoyner--Harlingen, Texas  
Alleen Eads--Mrs. Childs, New York City  
Am. B. Ashby--San Antonio, Texas  
\*Louis Porter

CLASS OF 1909

\*Arthur Pritchard  
Pearl Paul--Mrs. R. Campbell, San Antonio, Texas  
Annie Sprott--Mrs. Andrew Baird, Buckholts, Texas  
Lew Wallace--Minerva, Texas  
Andrew Vitrop--Dallas, Texas  
\*Mina Clark  
\*Mrs. Longwire  
Roger Gilland--Tracy, Texas  
Roger Lockwood--Tracy, Texas  
Henry Lockwood, Jr.--California  
Pansy Coffield--Mrs. H. C. Vance, Rookdale, Texas  
Leonard Stevens--Houston, Texas

CLASS OF 1910

Ernestine Kone--Mrs. B. Cantrell, Austin, Texas  
Mattie M. Gably--Mrs. Garrett, Houston, Texas  
Edith Branch--Mrs. Herbert, Dallas, Texas  
Mary Montague--Mrs. Steele, Dallas, Texas  
Ray Sessions--Mrs. J. P. Mohair, Weehawkin, New Jersey  
Esther Stevens--Houston, Texas  
Sadie Wooton--Mrs. Montague, Bay City, Texas  
Allie Wallis--Mrs. J. F. Coffield, Rookdale, Texas  
Nena Waller--Mrs. H. Ryan, Caldwell, Texas  
Mattie Williams--Mrs. Mattie Preston, Rookdale, Texas

\*Nolan Joyner  
Jean Longmoor--Rosebud, Texas  
Harley Perry--New York City  
\*Sullivan Turner

CLASS OF 1911

Agnes Hudson--Mrs. P. H. Paulin, New York City  
Pearl Brinkley--Mrs. L. B. Bing, Oakwood, Texas  
Corrinne Hehr--Mrs. N. O. Parmelee, Granger, Texas  
Esta Stribling--Mrs. Esta Quinlan, Rookdale, Texas  
Katie Waldrop--Mrs. A. E. McNeil, San Gabriel, Texas  
Mildred Moses--Mrs. Ed. Luckett, Penn.  
Maud Alford--Mrs. R. Crane, Austin, Texas  
Cassie Foster  
Goldie York--Mrs. R. Higgins, Dallas, Texas  
Frank Montague--Bay City, Texas

CLASS OF 1912

Meta McCalla--Mrs. Lassiter, Houston, Texas  
Lorena Kevill--Mrs. C. V. Landberry, Roundrock, Texas  
Dora Alford--Mrs. L. Wise, Seadrift, Texas  
\*Willie McNeil  
Helen Kone--Mrs. H. Switzer, Beaumont, Texas  
Bess Lockwood--Mrs. Cyrus Smythe, Caldwell, New Jersey  
Lettie Turner--Mrs. Irving Smith, Dallas, Texas  
Bessie Joyner--Mrs. Harrison, Wichita Falls, Texas  
Edwin York--Temple, Texas  
Frank Bethea--Piedmont, Wyoming  
Wynette Marrs, Rookdale, Texas  
Birta Robinson--Mrs. M. A. Lowery, Waco, Texas

CLASS OF 1913

Mary Ella Wallis, State Dept. of Botany, Austin, Texas  
Alice Waldrop--Lawyer, Dallas, Texas  
Josie Lee--Mrs. H. O. Quebe, Rookdale, Texas  
Clark Reeves--Houston, Texas  
Winnie Longmire--Mrs. T. Cooke, Tanglewood, Texas  
Brownie Stribling--Mrs. W. R. Laurence, Castroville, Texas  
James Sprott--Dallas, Texas  
\*John McGuire  
Edward Branch--Physician, Hollywood, Calif.

CLASS OF 1914

Louise Brodnax--Mrs. Les. Adkins, El Paso, Texas  
Jamie Wallis--Rookdale, Texas  
Esther Jenness--Mrs. K. K. Hairston, Houston, Texas  
Homer Turner--Post Office, Rookdale, Texas  
Will N. Hale--Rookdale, Texas  
Edgar Lengert--Salesman, Corpus Christi, Texas  
Forence Louise Dunnington--Rookdale, Texas  
Olive Branch--Mrs. J. C. Short, Ft. Leavenworth, Kansas  
Mollie Stein--Mrs. C. R. Farrar, Amarillo, Texas  
Minnie Hamilton--Mrs. E. E. Ferguson, Houston, Texas  
Pearl Woody--Beaumont, Texas  
Lucille Poole--Mrs. H. Estell, Rookdale, Texas  
Catherine Sanford--Mrs. Leo Strelsky, California  
Lorena Harris--Mrs. Rena Berner, Austin, Texas

CLASS OF 1915

Bernice Willis--Mrs. J. Mukelroy, Teneha, Texas  
Emma J. Lookwood--Mrs. D. Williams, New York  
Minnie Swatt--El Paso, Texas  
Ed Prewitt--Pharmacist, Rookdale, Texas  
Claud Gjedde--Salesman, Dallas, Texas  
Edrie Farmer--Mrs. Morris, Davilla, Texas

CLASS OF 1916

Mary C. Hill--Mrs. H. H. Whipp, Houston, Texas  
Tommie Johnson--Mrs. Potter, Oklahoma  
Eloie Clark--Mrs. J. Davis, Little Rock, Arkansas  
Fredonia Hairston--Mrs. J. Lanning, Rookdale, Texas  
Laura Talley--Mrs. Moore, Houston, Texas  
Ruth Stribling--Mrs. W. S. McClintock, Refugio, Texas  
Mabel Largent--Mrs. H. L. Howe, Calif.  
Erna Winterberg--Mrs. W. A. Cooper, Marathon, Texas  
Esther Gjedde--Mrs. E. Foster, Rookdale, Texas  
Mamie Hale--Mrs. J. F. Walter, St. Louis, Mo.  
Walton Douthit--M. D., New Orleans, La.  
James H. Hill--Merchant, Rookdale, Texas  
Claud Harris--Ft. Worth, Texas  
\*Grady Alledge  
Celesta Rothrock--Mrs. J. L. Dunnam

CLASS OF 1917

Agnes Cooke--Mrs. J. C. Wallis, Rookdale, Texas  
Rugy Lengert--Mrs. A. Huggins, Temple, Texas  
\*Lottie Banzhaf--  
Eva Smith--Teacher, Mt. Pleasant, Texas  
Willie Dymke--Mrs. Clarence Jeffreis, Heb-ronville, Texas  
Ella King--Mrs. T. J. Wakefield, Omaha, Neb.  
Hilda Stalterfoht--Sec'y South Texas Chamber Commerce, San Antonio, Texas  
Lois Montague--Mrs. F. Boyd Browning, Corpus Christi, Texas  
Gertrude Huddleston  
Wallace Perry--Dallas, Texas  
Essie Ferguson--Mrs. H. Williams, Rookdale, Texas  
Louis Shapard--U. S. Navy, So. Carolina

CLASS OF 1917 (Continued)

Mabel Waldrop--Mrs. Molane, Cameron, Texas  
Clay Allen--Lumber, Ennis, Texas  
Randolph Raine--Salesman, Uvalde, Texas  
Laura Hamilton--Rookdale, Texas  
Henrietta Dymke--Mrs. Frank Muschke, Rookport, Texas  
Avis Harris--Mrs. J. C. Oliver, Ft. Worth, Texas  
Myrtle McNeil

CLASS OF 1918

Elsie Seibert--Mrs. R. J. Rupert, Austin, Texas  
Louise Hale--Mrs. C. B. Sessions, Rookdale, Texas  
Mary A. Porter--Teacher, Victoria, Texas  
Edna Douthitt--Mrs. H. Jones, Tracy, Texas  
Lucille Hardy--Mrs. Young, Cameron, Texas  
Edith Bagley--Corpus Christi, Texas  
Margaret Stalterfoht--Sec'y Ins. Firm, Corpus Christi, Texas  
Bernadine Renfro--Mrs. Robt. Farmer, Ft. Worth, Texas  
Hazel Lookwood--Teacher, Austin, Texas  
Alberta Johnson--Mrs. W. R. Garrett, San Antonio, Texas  
Ruby Ray Robinson--Mrs. W. H. Gilbert, Gainsville, Texas  
Alberta Arledge  
Fannie Arledge  
Francis Terrell  
Charles B. Sessions--Salesman, Rookdale, Texas  
Malcolm Broxton  
Alfred Dipple--Accountant, Dallas, Texas  
Jack Raspberry--Lawyer, El Paso, Texas  
Floyd Lewis--Rookdale, Texas

CLASS OF 1919

Dollie Yoakum--Mrs. W. Robinson, Wyoming, Texas  
Eleanor Phillips--Mrs. L. Warren, El Paso, Texas  
Corrinne Blackburn--Mrs. H. Deihl, Jackson, Miss.  
Sarah Montague--Mrs. M. C. Boone, Palestine, Texas  
Ada Talley--Mrs. S. Lelawan, Houston, Texas  
Harry Dipple--S. P. Railroad, Houston, Texas  
Marx Raymon--Salesman, New Orleans, La.  
Carl Roth--Houston, Texas  
Eugene Lengert--Salesman, Rookdale, Texas  
Flora Sharpe--Mrs. Chas. Wright, Victoria, Texas  
\*Kelley Phillips  
Fred Bathea--Salesman, Rookdale, Texas  
Zeka Alford--Rookdale, Texas  
Charles Phillips--Civil Engineer, Vicksburg, Texas

CLASS OF 1920

Pearl Fletcher--Teacher, Houston, Texas  
\*Ophelia Estell  
Ivy Williams--Mrs. H. Moody, Rookdale, Texas  
Ellen Prewitt--Mrs. Ed. Kolba, Buckholts, Texas  
S. B. Ford--Dallas, Texas  
Sniveley Riddle--California

CLASS OF 1921

Grace Stribling--Mrs. A. A. Dipple, Dallas, Texas  
Marjerie Bagley--Teacher, Austin, Texas  
Lottie Phillips--Mrs. C. Moore, Lexington, Texas  
\*Margaret Riddle  
Inez Casey--Mrs. G. Flack, Houston, Texas  
Marguerite Lanning--Mrs. J. Meyers, Jacksboro, Texas  
Charles Young--Houston, Texas  
Rex Stewart  
Maggie Blackburn--Dallas, Texas

CLASS OF 1922

Ewell Gunn--Mrs. Gunn, Ft. Worth, Texas  
Lucy Rountree--Mrs. Kuykendall, Waco, Texas  
Lucille Gunn--Mrs. L. A. Moll, San Antonio, Texas  
Clara E. Cooke--Teacher, Carrizo Springs, Texas  
Anna Mae Prewitt--Mrs. P. H. Perry, Jr., Rookdale, Texas

CLASS OF 1922 (Continued)

Theodore Schmidt--Winchester, Texas  
 Charlie Robinson--Palestine, Texas  
 Homer Montague--Houston, Texas  
 Solon Richards--Merchant, Hicks, Texas  
 Ida Cherry--Mrs. Roy Crittenden, Waco, Texas  
 Sam Raymon--Salesman

CLASS OF 1922-23

Helen Ashby--Drug Store, Austin, Texas  
 Audrey Arrett--Mrs. Coleman Jealls, Kyle, Texas  
 Wm. Cooks--Newspaper, Rockdale, Texas  
 Lucille Ford--Mrs. R. C. Burton, McKinney, Texas  
 Robbie Isaacs--Mrs. Bob Swain, Vivian, La.  
 Horace Lightfoot--Ford Co., Shreveport, La.  
 Henry Meyer--Cotton Buyer, Vernon, Texas  
 Maurine Neville--Mrs. H. Floyd, Rockdale, Texas  
 Willie Scheihing--Salesman, Waco, Texas  
 Conner Thomas  
 Bernice Frasier--Mrs. Albert Cloud, Rockdale, Texas

CLASS OF 1923-24

Ruth Bunting--Teacher, Goose Creek, Texas  
 Don Cohn--Merchant, Rockdale, Texas  
 Helen Coulter--Mrs. T. B. Ryan, Rockdale, Texas  
 Homer Dymke--Rockdale, Texas  
 Ina Mae Hillyer--San Antonio, Texas  
 Aileen James--Mrs. B. B. Kelly, Texon, Texas  
 Osie Lee Kilpatrick--Mrs. Ed. Bartlett, Rockdale, Texas

\*Miriam Lowenstein  
 Willie Day--Mrs. Sam Taylor, Cameron, Texas  
 Ailene Catchings--Mrs. H. McGorry, Hearne, Texas  
 Robbie Williams--Mrs. A. M. Holley, Rockdale, Texas  
 Carmen James--Chicago, Ill.  
 Ruby Lee Offield--Mrs. Arthur McDaniel, Rockdale, Texas  
 Robert Lee Sykes--Drug Store, Houston, Texas  
 Malcolm Green--Rockdale, Texas  
 Clara Bell Burney--Rockdale, Texas  
 Thelma Stephen--Mrs. Reichert, Sharpe, Texas  
 Ruth Bowling--Mrs. Reich Gray, Gause, Texas  
 Emogene Ferguson  
 Ruth Spiegel

CLASS OF 1924-25

Wesley Blackburn--Overton, Texas  
 Ray Catchings--Barber, Waco, Texas  
 Elwood Seelke--Farmer, Rockdale, Texas  
 Vashti Smith--Teacher, Rockdale, Texas  
 Leon Alvrcht--Postoffice Clerk, Rockdale, Texas  
 Alma Catchings--Rockdale, Texas  
 Lois Catchings--Mrs. R. E. Bailey, Rockdale, Texas  
 Ruby Farmer  
 Wayne Hairston--Postoffice Clerk, Conroe, Texas  
 Wade Harris  
 Joe Henry--Garage, Rockdale, Texas  
 Lucille Hillyer--San Antonio, Texas  
 Welborn James  
 Artice Cone  
 Thelma Kyle  
 James Johnson  
 Ward Lightfoot--Mrs. Paul Pope, Tyler, Texas  
 Harold Luckey--Bank Clerk, Rockdale, Texas  
 Elmer Newsome--Mrs. Bennie Woods, Taylor, Texas  
 Doreen Orr--Mrs. Bert Shanklin, Rock Springs, Texas  
 Dorothea Phillips--Mrs. J. B. Newton, Rockdale, Texas  
 Elfreda Scheihing--Mrs. J. Moore, Rockdale, Texas  
 Catherine Stribling--Teacher, Corpus Christi, Texas  
 Edith Williams--Mrs. V. Rowland, Moulton, Texas  
 Christine Yeakum  
 Bernice Foster--Mrs. McCarty, Austin, Texas  
 Juanita Blakeley

CLASS OF 1925-26

Martha Crittenden--Waco, Texas  
 Jack Crump--Rockdale, Texas  
 Sherman Green--Rockdale, Texas  
 Melvin Vesey--U. S. Battleship  
 Emory Camp--Attorney, Cameron, Texas  
 Laila Catchings--Mrs. G. Towery, Rockdale, Texas

Sadie Cravey  
 Ivilla Crittenden--Waco, Texas  
 Amber Estell--Mrs. C. McKinney, Houston, Texas  
 Margaret Ferguson--Mrs. C. B. Murfrais, Austin, Texas  
 Marvin Franklyn--Teacher, Sinton, Texas  
 Emma Hardie--Stenographer, Cameron, Texas  
 Preston Harris--Rockdale, Texas  
 Grace Henry--Mrs. Kenneth Wiley, Oklahoma, City, Okla.  
 Eugene Landis--Telegrapher, Hearne, Texas  
 Glen Lincoln--Taft, Texas  
 Irene Linder--Refugio, Texas  
 Carrie Lowenstein--Rockdale, Texas  
 Mildred Lucas--Mrs. I. House, Minerva, Texas  
 Vivian Lucas--Mrs. A. W. McCullin, Minerva, Texas  
 Mary Frances Murphee--Mrs. J. Ellis, Houston, Texas  
 Boswell Newton--Merchant, Rockdale, Texas  
 Ethel Offield--Stenographer, Cameron, Texas  
 Tommie Richards--Mrs. Burney, Rockdale, Texas  
 Pauline Rountree--Stenographer, Houston, Texas  
 Sadie Smith--Mrs. Arnold Butts, Rockdale, Texas  
 Kate Stein--Mrs. E. E. Holland, Wichita, Falls, Texas  
 Cornelia Stribling--Rockdale, Texas  
 Agnes Thomas--Mrs. Pat Pervis, Louisiana  
 E. B. McCoy--Austin, Texas  
 Charles Green--San Angelo, Texas  
 Edwin Burney--Rockdale, Texas  
 Vera Edmonson  
 Marie Phillips--Stenographer, Houston, Texas  
 Cecil Kelso--Salesman, Austin, Texas  
 Rose May Strelsky--Galveston, Texas  
 Ravenell Raly  
 Paul Lewis--Teacher  
 Martha Davis--Mrs. Ft. Worth, Texas

CLASS OF 1926-27

Elizabeth Cone--Mrs. Underwood, Henderson, Texas  
 Eula Stiles  
 \*Thomas Crump  
 Raye Currey  
 Ruth Kirk--Teacher, Rockdale, Texas  
 Lucille Landia--Mrs. W. E. Bell, Dallas, Texas  
 Dorothea Lee--Mrs. J. Wilkerson, Milano, Texas  
 Ellie May Lynch--Rockdale, Texas  
 Myrtle Offield--Mrs. Kieta, Cameron, Texas  
 Bertie Smith--Teacher, Rockdale, Texas  
 Virginia Thweatt--Mrs. J. L. Easterwood, Luling, Texas  
 J. P. Sparks--Rockdale, Texas  
 Alfred Bailey--Minerva, Texas  
 Clyde Griffin  
 George Perry--Rockdale, Texas  
 Kirby Ray Simmons--Houston, Texas  
 Mel Summers--Ft. Worth, Texas  
 Anna Marie Barnes--San Marcos, Texas  
 Edith Currey--Mrs. Elmer Gunn, San Marcos, Texas  
 Lois Ferguson--Houston, Texas  
 Wilma Hillyer--Mrs. Barney McCoy, Rockdale, Texas  
 Anita Vogel--Rockdale, Texas  
 Billjian Wallis--Mrs. Sherman Green, Rockdale, Texas  
 Aaron Green--Postoffice Clerk, Longview, Texas  
 Evangeline Bevers  
 Nettie Lee Hedwell--Mrs. A. B. Curlee, Houston, Texas  
 Glenn Spiegel  
 Barney Watson

CLASS OF 1927-28

Don Luckey--Undertaker, Rockdale, Texas  
 Mervyn Offield--Teacher, Rockdale, Texas  
 Willie Mae Clumppitt--Mrs. Mustin, Rockdale, Texas  
 Jennie Bell Cone--Mrs. R. S. Evans, Minerva, Texas  
 Newton Daniels--Rockdale, Texas  
 Lois Dyer--Stenographer, Houston, Texas  
 Lloyd Dyer--Brownwood, Texas  
 \*L. C. Franklyn

CLASS OF 1927-28 (Continued)

Edna Kirk--Louisville, Ky.  
 Cora Langston--Stenographer, Austin, Texas  
 Herbert Lightfoot--Houston, Texas  
 Faye Linder--Mrs. Telling, Dallas, Texas  
 Emory Pickens--Rockdale, Texas  
 Irene Phillips--Rockdale, Texas  
 Annie Mae Sheekels--Houston, Texas  
 Jack Williams--Kyle, Texas  
 Elizabeth Doss--Rockdale, Texas  
 Terry Moses--A. & M. College  
 Ray Vinton--Houston, Texas

CLASS OF 1928-29

Billy Orr--Overton, Texas  
 John Richards--Med. Student, Galveston, Texas  
 Lois Gunn--Teacher, Rockdale, Texas  
 Mignon Graves--Teacher, Rockdale, Texas  
 Allegra Yeakum--Mrs. Buford Dobbs, Houston, Texas  
 Pearl Harris--Clerk, Rockdale, Texas  
 Leo Cone--Nurse, Dallas, Texas  
 Howard Cone--Minerva, Texas  
 Mildred Dunham--Houston, Texas  
 Lillie Mae Dean--Mrs. Jack Cummings, Houston, Texas  
 Wendell Dyer--Printer, Floresville, Texas  
 Poitevent Franklyn--Bank, Rockdale, Texas  
 Sumner Foster--Rockdale, Texas  
 Katherine Green--Rockdale, Texas  
 Leroy Hillyer--Bay City, Texas  
 Esther Lynch--Rockdale, Texas  
 Rodney Montague--Austin, Texas  
 Paris Murray--Thorndale, Texas  
 Willie Lee McLeod--Mrs. Albert Timmerman, Rockdale, Texas  
 Charles Newton--Merchant, Rockdale, Texas  
 Mignon Smith--University of Texas, Austin, Texas  
 Della Stein--Mrs. G. C. Reid, Dallas, Texas  
 Avis Williams--Mrs. Hoc Eans, Rockdale, Texas  
 Marian Bodford--Dallas, Texas  
 Bernadine Childs--Mrs. Wallis Simmons, Houston, Texas  
 Margaret Lengert--Teacher, Rockdale, Texas

CLASS OF 1929-30

Charles Carter  
 Winnie Childs--Stenographer, Border State, Rockdale, Texas  
 Frances Clawson--Mrs. B. K. Karney, Leon Junction, Texas  
 Vivian Edwards--Trained Nurse  
 Jim Ellis--Rockdale, Texas  
 Wilma Evans--Teacher, Salado, Texas  
 Noel Fisher--Sandy Creek, Texas  
 Frank Fleming--Waco, Texas  
 Artie Griffin  
 Eugene Hedwell--Minerva, Texas  
 Lowene Lewis--Teacher, Rockdale, Texas  
 Buns Marie--Tracy, Texas  
 Elzie Middleton--Mrs. Jack Lewis, Rockdale, Texas  
 Bernice Mrosko--Rockdale, Texas  
 Ruby Joak--New Mexico  
 Jewel Peterson  
 Harry Wayne Phillips--Miami, Florida  
 Elizabeth Pickens--Rockdale, Texas  
 Vera Posey--Beauty Operator, Taylor, Texas  
 Juanita Reed  
 Frances Richards--Stenographer, Rockdale, Texas  
 Shelby Smith--Rockdale, Texas  
 Gilbert Terry--Minerva, Texas  
 Wilbur Williams--Died in Soarborough & Hicks, Fire  
 Zell Mae Winslett--Port Lavaca, San Gabriel, Texas  
 Billy Worley--Mrs. Zack Felton, San Gabriel, Texas

CLASS OF 1930-31

Marshall Ashley--Teacher, Pleasant Hill, Texas  
 Vera Abrett--Practical Nurse, Pleasant Hill, Texas  
 Oleta Bartlett--Tracy, Texas  
 Linnie Bell Bailey--Rockdale, Texas  
 Harry Baldrige--Rockdale, Texas  
 Alice Elloie Barkley--Rockdale, Texas  
 Mary Katherine Baxter--Rockdale, Texas  
 Lucille Brannon--Mrs. Nash, Hearne, Texas  
 Inez Brown--Mrs. Clifton, Rockdale, Texas

CLASS OF 1930-31 (Continued)

Veda Burney--Rockdale, Texas  
 John Edwards--Minerva, Texas  
 Autherine Ewing--Beaumont, Texas  
 Robert Foster--Texas University, Austin, Texas  
 Jessie Ray Gray--Rockdale, Texas  
 Odessa Guthrie--U. S. Army, San Antonio, Texas  
 Harry Hamilton--Insurance, Rockdale, Texas  
 Andrew Jenkins--Minerva, Texas  
 Laurence Jones--Ass't Mgr. Austin Maid Ice Cream Stores, Austin, Texas  
 Pete Keen--Rockdale, Texas  
 Noel Kelso  
 Mary Lou McCall--Houston, Texas  
 Hugh Luos--Minerva, Texas  
 David McGueyer--Filling Station, Rockdale, Texas  
 Jimmie Lee Mason--Telephone Operator, Rockdale, Texas  
 Leon Stone--Tahoka, Texas  
 Otis Curry--Rockdale, Texas  
 Fred Graves--Teacher, Rockdale, Texas  
 Raymond Mason--Rockdale, Texas  
 Monard Mobley--Bryan, Texas  
 Myrtle Moses--Hearne, Texas  
 Josie Palmer--Stenographer, Rockdale, Texas  
 Raney Petty--Mechanic, Sharp, Texas  
 Irma Scheihing--Registered Nurse, El Paso, Texas  
 Helen Stein--Stenographer, Houston, Texas  
 Elwood Smith--San Antonio, Texas  
 Lorene Strelsky--Mrs. Leon Dyer--Rockdale, Texas  
 Helen Stribling--Mrs. David McGueyer, Rockdale, Texas  
 Willis Summers--Clerk, Houston, Texas  
 Kittie Zelle Tyler--Mrs. Bennie Dee Williams, Rockdale, Texas  
 Robert Wallis--Rockdale, Texas  
 Lavada Williams--Mrs. Leon Towery, Rockdale, Texas  
 Wilma Williams--Austin, Texas  
 Thelma Winslett--Waco, Texas  
 Thelma Zavisch--Mrs. Kindred Raley, Austin, Texas

CLASS OF 1931-32

Bruce Allen--Rogers, Texas  
 Esther Mae Anderson--Sharp, Texas  
 Marguerite Avrett--Cameron Hospital, Cameron, Texas  
 Esther Balcar--Rockdale, Texas  
 Wade Bankston--Rockdale, Texas  
 Claytie Boothe--Brookridge Hospital, Austin, Texas  
 Emory Brockenbush--Rockdale, Texas  
 Lorraine Burney--Gause, Texas  
 Mary Ethel Burney--Gause, Texas  
 Marie Cole--Mrs. B. Dyer, Minerva, Texas  
 Irma Gee--Rockdale, Texas  
 Jean Green--Houston, Texas  
 Morris W. Green--Austin, Texas  
 M. G. Gregory--Sharp, Texas  
 Iris Grissom--Houston, Texas  
 Mittie Haddox--Milano, Texas  
 John King Haddox--Milano, Texas  
 J. D. Hairston--San Marcos, Texas  
 John H. Hensley  
 Fannie Marie Holderness--Mrs. Pierce, Rockdale, Texas  
 Nannie Florenc Horton--Cameron Hospital, Cameron, Texas  
 Billie Kirk--San Marcos, Texas  
 Edna Laferre  
 Douglas Linder--Mrs. Louis Jackson, Dallas, Texas  
 Clayton Luos--Minerva, Texas  
 Artie Mason--Rockdale, Texas  
 Francis Middleton--Aransas Pass, Texas  
 Irene Karisch--Smithville, Texas  
 Thomas Offield--Rockdale, Texas  
 Monroe Pierce--Rockdale, Texas  
 Grace Parton--Houston, Texas  
 Mary Francis Robinson--Minerva, Texas  
 Elizabeth Schukraft--Cameron, Texas  
 Margaret Stevens--Cameron Hospital, Cameron, Texas  
 Dorris Sheppard--Rockdale, Texas  
 Austin Sidos--Dallas, Texas  
 Mary Ethel Simmons--Mrs. Harry Timmerman, Rockdale, Texas  
 Doris Small--Mrs. Dewall, Milano, Texas  
 Carl Stewart--Milano, Texas

CLASS OF 1931-32 (Continued)

Helen Stewart--Sharp, Texas  
 Lawrence Summers--Rookdale, Texas  
 Bailey Timmerman--College Station, Bryan, Texas  
 Phil Tuma--Rookdale, Texas  
 Carlton Trotter--Minerva, Texas  
 Lee Wallaas--Minerva, Texas  
 Denson Weoms--San Marcos, Texas  
 Dovie Williams--Mrs. Howard Page, Mathis, Texas  
 Boyd Worley  
 Lula Worley--Rookdale, Texas  
 Robert Young--Laredo, Texas  
 Mabel Armstrong--Minerva, Texas

CLASS OF 1932-33

William Fletcher--Rookdale, Texas  
 Flora Scheihing--Mrs. Preston Harris, Rookdale, Texas  
 Jim Sam Perry--Texas University, Austin, Texas  
 Emmerr McGuire--Rookdale, Texas  
 Viola McGown--Rookdale, Texas  
 Randolph Keeton--Alabama  
 Sessions Hosea--Rookdale, Texas  
 Mamie Lee Gore--Minerva, Texas  
 Teddy Currey--Rookdale, Texas  
 Gladys Currey--Rookdale, Texas  
 Jerry Lebr.--A. & M. College, Bryan, Texas  
 Doris Alexander--Nurse  
 Lelia Anderson--Houston, Texas  
 Horace Brown--Mission, Texas  
 Lillian Backhaus--Rookdale, Texas  
 Martha Anna Srafford--TSCFW, Denton, Texas  
 Ida Mae Petty--Clerk, Rookdale, Texas  
 Robert Porter--Texas University, Austin, Texas

R. A. Simmons--Rookdale, Texas  
 Emma Lorenz--Mrs. B. Whiteley, Cameron, Texas  
 Clark Roberts--Ft. Sam Houston, San Antonio, Texas

Adell Brannon--Mrs. Meyers Ward, Rookdale, Texas

Cecil Water--Gause, Texas  
 Florence Hubert--Training, El Paso, Texas  
 Harry Bartlett--Houston, Texas  
 Gladys Bounds--Corsicana, Texas  
 Helen Baldrige  
 Mary Edith Dold--Mrs. Richards, Minerva, Texas  
 Elizabeth Edwards--Minerva, Texas  
 Edwin Eads--Gulf Refining Station, Rookdale, Texas

Teddie Guthrie--Austin, Texas  
 C. R. Isaacs--Rookdale, Texas  
 Ishmael Jenkins--Minerva, Texas  
 Allene Kroll--Austin, Texas  
 Laura Lanford--Mrs. J. Lands, Rookdale, Texas  
 Rosie Lebr--Ramayer, Texas  
 W. O. Linder--Corsicana, Texas  
 Gladys Matson--Texas University, Austin, Texas  
 Maxine McGown--Port Arthur, Texas  
 Fenora Meyer--Texas University, Austin, Texas  
 Della Mae Noack--Rookdale, Texas

CLASS OF 1933-34

Herbert Caywood--Rookdale, Texas  
 Bonnie Mae Cunningham--Mrs. Galloway, Rookdale, Texas  
 Edith Brown--Mission, Texas  
 Willard Currey--Hicks, Texas  
 Walter Holliman--Rookdale, Texas  
 Louise Alford--Rookdale, Texas  
 Bernadina Garcia--Rookdale, Texas  
 Ina Mae Gee--Mrs. Bill Ferguson, Rookdale, Texas  
 Agnes May Hubert--Cameron Hospital, Cameron, Texas  
 Lucille Kyle--Mrs. M. Towerly-Rookdale, Texas  
 Kathleen Luckey--Rookdale, Texas  
 Nadine Bounds--Corsicana, Texas  
 Catherine Farmer  
 Opalie Hairston--Rookdale, Texas  
 Floyd Griffis--Rookdale, Texas  
 Mark Towerly--Rookdale, Texas  
 Rob Lee Bounds--Rookdale, Texas  
 Edwin Stockwell--Houston, Texas  
 Marcelia Strelsky--Galveston, Texas  
 Elizabeth Engram--Rookdale, Texas  
 Thelma Engram--Rookdale, Texas  
 Arvill Ray Jones--Austin, Texas  
 Lillian Anthis--Mrs. Artie Gleghorn--Rookdale, Texas  
 Ann Anderson--Training, Austin, Texas

CLASS OF 1933-34 (Continued)

Margie Nell Williams--Rookdale, Texas  
 Lillian Schihing--Rookdale, Texas  
 Marshall Floyd--Rookdale, Texas  
 Doris Simms--Rookdale, Texas  
 Bill Ferguson--Rookdale, Texas  
 Ray Sides--Rookdale, Texas  
 Ruth Montague--Rookdale, Texas  
 Yvonne Palmer--Rookdale, Texas  
 Ruby Menn--Cameron Hospital, Cameron, Texas  
 Alexander McLeod--Salesman, Austin, Texas  
 Evelyn Tuma--Luling, Texas  
 Henry Tyler--Rookdale, Texas  
 Dorothy Matson--Texas University, Austin, Tex.  
 Bonnie Beas McCoy--Beauty Operator, Austin, Tex  
 Mary Louise Mackie--Rookdale, Texas  
 Hardy Young--Tanglewood--Texas  
 Bob Tyler--Houston, Texas  
 Ella Frances Wolf--Baptist Academy, San Marcos, Texas

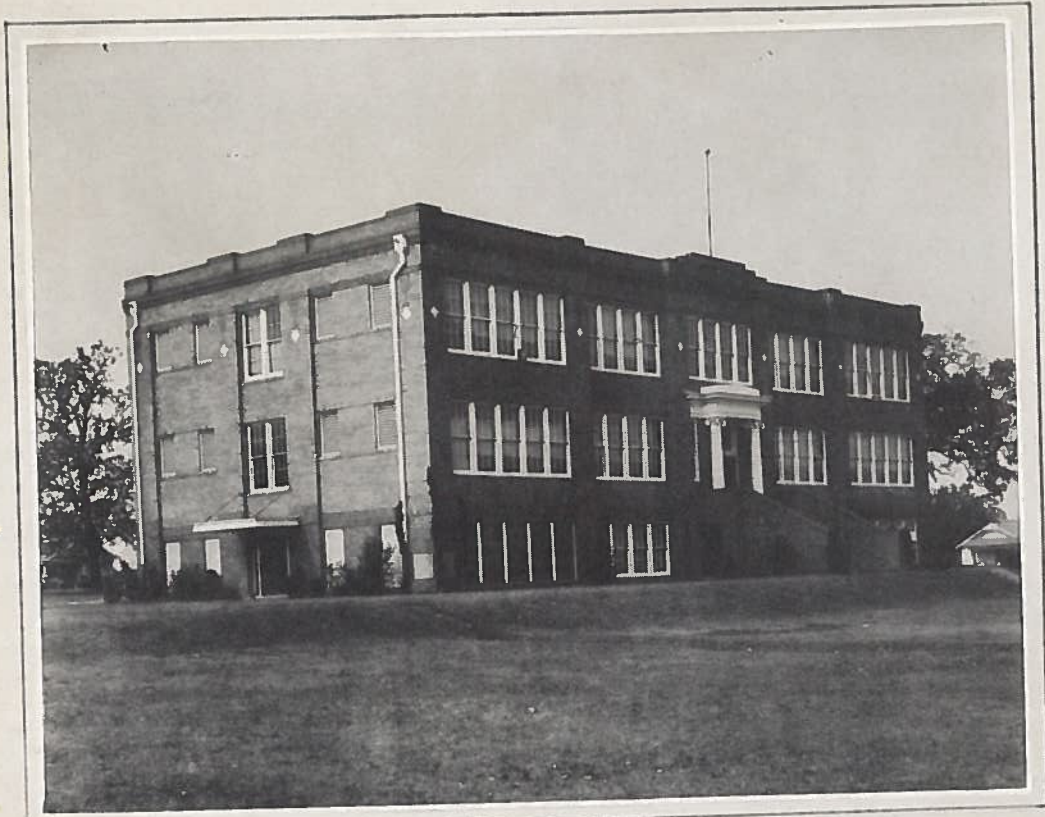
CLASS OF 1934-35

Ray Abernathy--Houston, Texas  
 Rhea Nell Allen--Rookdale, Texas  
 Marshall Ayrett--U. S. Navy  
 Isabell Baker--Dallas, Texas  
 Bertha Caywood--Mrs. C. O. Williams Rookdale, Texas  
 Norris Gons--Arizona  
 Harvey Cooke--Rookdale, Texas  
 David Corder--Tanglewood, Texas  
 Louise Curlee--Tanglewood, Texas  
 Woodrow Curlee--Tanglewood, Texas  
 Ruth Culp--Rookdale, Texas  
 Henry Easterling--Ft. Worth, Texas  
 Fred Ewing--Texas University, Austin, Texas  
 Rufus Graves--HTAC., Arlington, Texas  
 Lillian Holderness--S. W. T. C., San Marcos, Texas

Willie Jenkins--Minerva, Texas  
 Eldridge Ragan--Rookdale, Texas  
 Nona Jinks--Rookdale, Texas  
 Ruth Kornegay--Mrs. E. Cass, Rookdale, Tex.  
 Thomas Lanford--Rookdale, Texas  
 Margaret Lucas--Minerva, Texas  
 Gaylon McCoy--Houston, Texas  
 Kirby McGuire--Rookdale, Texas  
 Howard McNamee--Rookdale, Texas  
 Violet McVoy--Houston, Texas  
 Reginald Miller--Houston, Texas  
 Ernestine Moreland--Tanglewood, Texas  
 Ailene Oldham--Training, Houston, Texas  
 Adolph Owens--Tanglewood, Texas  
 Earl Perry--Texas University, Austin, Texas  
 Idelle Plant--Tanglewood, Texas  
 Guy Pruet--HTAC., Arlington, Texas  
 Nellie Gray Pruet--Mrs. Lehman, Giddings, Tex.  
 Nonnie Mae Renfro--Baylor, Belton, Texas  
 Iris Rogers--Houston, Texas  
 Capitolia Soroggins--Rookdale, Texas  
 Vera Sheppard--Rookdale, Texas  
 Wallace Smith--Rookdale, Texas  
 Edna Earl Stein--Rookdale, Texas  
 Dorothy Stephens--Lon Morris College, Jacksonville, Texas  
 Weldon Strelsky--Rookdale, Texas  
 Pansy Thompson--Rookdale, Texas  
 Lula Zora Tuma--Baylor, Belton, Texas  
 Beatrice Walker--Baylor, Belton, Texas  
 Cliff Wallace--Minerva, Texas  
 Louise White--Rookdale, Texas  
 Eloise Yoakum--Training, Waco, Texas  
 James O. Kyle--Dime Box, Texas  
 B. F. Stephens--Rookdale, Texas



ersonnel



# The School



# Faculty

FRED HILL GRAVES, B.A.  
S.W.T.S.T.C.  
English (High School)  
Senior Sponsor



BETTIE LOU GARRETT, B.S.  
S.W.T.S.T.C.  
Home Economics  
Sophomore Sponsor



JOE LIPSCOMB  
N.T.S.T.C.  
Science  
Freshman Sponsor



MABLE LENE GRAVES, B.A.  
Baylor University  
Spanish  
Junior Sponsor



SAMUEL CLAUD MILES, B.A., M.A.  
University of Texas  
Superintendent



LUCILLE MCCANNE DENNIS, B.A.  
T.W.C.  
History (Intermediate)  
Annual Sponsor



H. D. MAXWELL, B.S.  
Sam Houston Teachers  
College  
Agriculture



ESTA STRIBLING QUINLAN  
Librarian



W. H. BROCK, B.S.  
Sam Houston Teachers  
College  
Mathematics



NETTIE TURNER  
Texas Arts and Industry  
Geography (Intermediate)



RUTH KIRK, B.A.  
University of Texas  
Fourth Grade



DOROTHEA PHILLIPS NEWTON, B.A.  
University of Texas  
Arithmetic (Intermediate)



MAMMIE RHEA WILLIAMS  
University of Texas  
English (Intermediate)



HUBERT DENNIS, B.E.  
T.C.U.  
Principal, Coach



MARTHA C. MILES, B.A.  
Baylor University  
First Grade



MARY NOBLE PERRY  
Texas University &  
T.C.U.  
Second Grade



LOIS GUNN, B.S.  
S.W.T.S.T.C.  
Third Grade



LOUISE HALE SESSIONS  
University of Texas &  
T.C.C.  
First Grade

# School Board



CLYDE FRANKLIN



GUS BACKHAUS, JR.



JOHN E. COOKE



L.A. BAXTER  
President



HARLEY STONE



R.J. GLENN STEWART



HUBERT H. COFFIELD



# Views Around School



TOMMY COFFIELD, "ROXY"

Football '32, '34, '33, '35  
 All District '34  
 All Central Texas '34  
 Basketball '34, '35, '36  
 Tiger Tales Staff '35, '36  
 Annual Staff-Bus.Mgr. '36  
 Track '33, '34, '35  
 Tennis '34  
 Freshman Pres. '33  
 Sophomore V. Pres. '34  
 Junior Sec. '35  
 Senior Pres. '36  
 F.F.A. Club '34, '35, '36  
 Pres. '35  
 District Sec. '34



President



Vice-President

GRAHAM KYLE, "PAPA"

Football '32, '33, '34,  
 '35, Captain '34  
 All District '34, '35  
 Football Hero '35  
 Track '33, '34, '35  
 Basketball '33, '34,  
 '35, '36  
 Annual Staff-Design '36  
 Tiger Tales Staff '36  
 F.F.A. Club Sec. '33  
 Treasurer '34  
 Senior V. Pres. '36  
 Junior Treas. '35  
 Sophomore Sec. '34



Secretary

BILLIE NELSON, "NIG"

Tennis '34, '35  
 Tiger Tales Ed.-in-Chief '36  
 Sports '34, '35  
 Annual Staff-Asst. Ed. '36  
 Junior Class Pres. '35  
 Senior Class Sec. '36  
 Pep Squad Leader '35  
 Senior Play '36  
 Little Theatre '33



Treasurer

ELBERT VANMETER, "VANDY"

Football '33, '34, '35  
 Track '33, '34, '35  
 Senior Class Treas. '36  
 F.F.A. Club '34, '35, '36

# Seniors





MABLE CLAIRE CORDER  
Volley Ball '35



JAMES BEARD



MARGARET CURRY  
H. E. Club '33, '34  
Pep Squad '35  
Annual Staff-Assst. Photo Ed. '36



GERTRUDE CRUMP, "CHECKERS"  
Declamation '35  
H. E. Club '33, '34  
Pep Squad '32, '33, '34, '35  
Duchess '35



ALVIN CURRY  
Football '34, '35  
Basketball '34, '35, '36  
Track '34, '35



WAMBLE CHERRY



FLORINE AVRETT



ESTELLE BOSWELL  
Baseball '33  
Volley Ball '34, '35



BETH CRIMM



MELBARIE HOSEA  
H. E. Club '36



LAURA EILAND  
Basketball '35, '36

HARVEY DEAN "LIGHTCRUST"  
Football '32, '33, '34, '35  
Captain '35  
Track '33, '34, '35  
District Low Hurdles  
Stock Show-Low Hurdles  
F.F.A. Club '36



EVELYN GUNN  
Annual Staff-Snapshots '36, H. E. Club '32, '33, '34, Sec.-Treas. '33  
Pep Squad '32, '33, '34, '35



CARRIE LOUISE FRANKLIN  
H. E. Club '32, '33, '34  
Annual Staff-Photos '36

JACK FERGUSON  
Football '34, '35  
Basketball '34  
Track '34



WALLIS DYER

FLORA HAE DYMKE  
H. E. Club '32, '33, '34, Pep Squad '32, '33, '34, '35





W. T. PEARSON, JR. "SINGER"

Pep Squad Leader '35  
Senior Play '36  
F.F.A. Club '34, '36



JO MURPHREE "BUTCH"

H.E. Club '32, '33, '34  
Sec.-Treas. '34  
Pep Squad '32, '33, '34, '35  
Declamation '33  
Duchess '35  
Senior Play '36  
Tiger Tales-Asst. Society Ed. '36  
Annual Staff-Humor Editor '36



ZELLA WEISS MORELAND

H. E. Club '36  
Baseball '33  
Volley Ball '36



BOYD MIDDLETON "MITE"

Football '32, '33, '34, '35  
Basketball '33, '34, '35, '36  
F.F.A. Club '34, '35, '36  
Track '33, '34, '35



ADOLPH McVOY

F.F.A. Club '35



MAURINE McVOY

H. E. Club '35  
Baseball '33  
Volley Ball '35



HARRIS NEELY

Football '34, '35  
F.F.A. Club '33, '34, '35



CLAUDIE MUSTON

F.F.A. Club '33, '34



VERNON MCGUYER "BIRD DOG"

Football '34, '35  
Captain '35  
Track '34, '35  
F.F.A. Club Pres. '36  
Vice-Pres. '35  
Sophomore Pres. '33



ROMA LARGENT "DYNAMITE"

Football '34, '35  
All District '35



MARY LOUISE LEE "DINK"

Pep Squad '32, '33, '34, '35  
Senior Play '36  
H.E. Club '33, '34



CARLTON GUTHRIE "COOKIE"

F.F.A. Club Treas. '34, '35



DORIS MCGAWLEY "DOT"

Pep Squad '32, '33, '34, '35  
Leader '35  
Duchess '35  
H.E. Club Sec. '35  
Senior Play '36  
Annual Staff-Senior Ed. '36  
Tiger Tales-Cub '36



ERNEST LORENZ "MOOSE"

Football '33, '34  
Basketball '32, '33, '34  
Track '32, '33, '34  
F.F.A. Club '33, '34, '35



ELTON KIRCHENWITZ

F.F.A. Club '34, '36



BILLY KELLEY

Pep Squad Leader-  
'34





THOMAS ROBINSON  
F.F.A. Club '35, '36



NORINE STORK  
H. E. Club '36



VIRGINIA HALE, "VIRGIE"  
Annual Staff-Ed-in-Chief '36  
Tiger Tales-Society '34, '35, '36  
H.E. Club '32, '33, '34  
Sec.-Treas. '32  
Pep Squad '32, '33, '34, '35  
Junior Play '33  
Expression '33  
Senior Play '36



ROSS POSEY  
Football '35



NANNETTE ROUNTREE, "PEACHES"  
Senior Play '36  
Annual Staff-Asst. Bus. Mgr. '36  
Essay Writing '35  
Debate '35, '36  
Little Theatre '33  
H.E. Club, Pres. '36  
Pep Squad Leader '35  
Pep Squad '32, '33, '34, '35  
Duchess '35  
Tiger Tales-Sports '34, '35  
Asst. Ed. '36



JANE GUNN, "QUEENIE"  
Football Queen '35  
Annual Staff Asst. Ed. '36  
Tiger Tales Soph. Ed. '34  
Jun. Ed. '35, Features '36  
H.E. Club '32, '33, '34  
Vice-Pres. H.E. Club '32  
Pep Squad '32, '33, '34, '35

BILL PUGH  
Senior Play '35  
One Act Play '36  
Debate '36

ARTHUR PEDERSON, "PETE"  
Football '34, '35  
Basketball '35



MINNIE TIMMERMAN  
Basketball '35, '36  
Pep Squad '35  
H.E. Club '36



DOROTHY WILLIAMS  
H.E. Club '33, '35  
Art Editor Annual  
Little Theatre '34  
Senior Play  
Pep Squad '33, '34, '35



ANNIE MAE TIMMERMAN  
Pep Squad '34, '35



ELMO STEPHENS  
F.F.A Club '36



ERLENE SIDES  
Basketball '33, '34, '35, '36



CASSIE TUMA

LU ELLA SMITH  
H.E. Club '33, '35  
Pep Squad '32, '33, '34, '35

EDITH SCARBROUGH  
Basketball '36





OLA ESTELL WEST



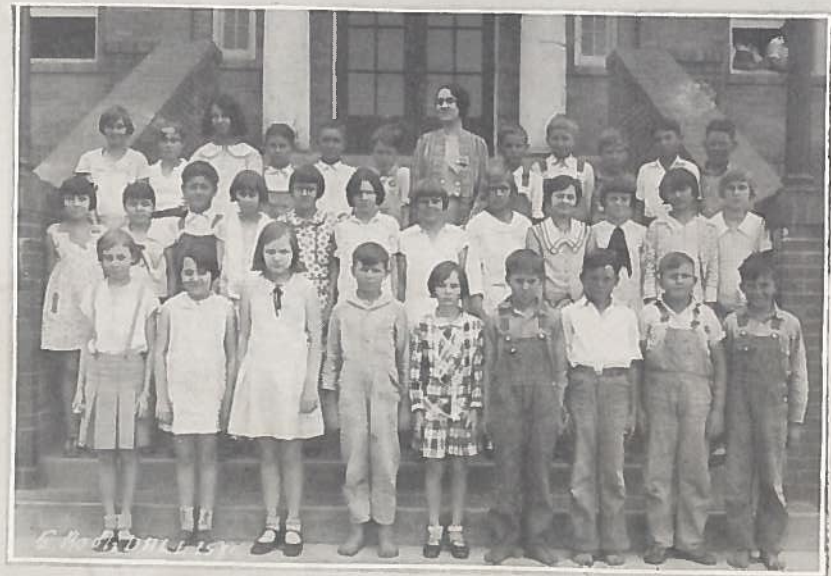
RUBY MAE WINKLER

Science Club '36



HARMON WILLIAMS

F.F.A. Club '35, '36



SENIOR CLASS IN 1930

3rd. Row-Dymke, Rountree, Burgess, J. McGuire, A. Curry, B. Williams, M. R. Williams, Muston, Kirchenwitz, Sweaks, Keen, Middleton.  
2nd. Row-J. Gunn, M. Curry, Kyle, Franklin, E. Gunn, \*Bland, Lane, Holliman, McCawley, \*Talley, Crump, Smith.  
1st. Row-D. Williams, Murphee, Hale, Flemmings, Sides, Kornegay, V. McGuyer, W. Williams, Simonton.

\*Deceased.



ANN SEIBERT  
President



LA VERNE RENFROE  
Vice-President



MARGUERITE WHITES  
Secretary



TRAVIS KEY  
Treasurer

# Junior



LUCILLE ALFORD

JESSIE ALEXANDER



EURNELL CAUDLE

BEATRICE CASS



MARY LEE ALFORD

VESPER CHRISTIAN



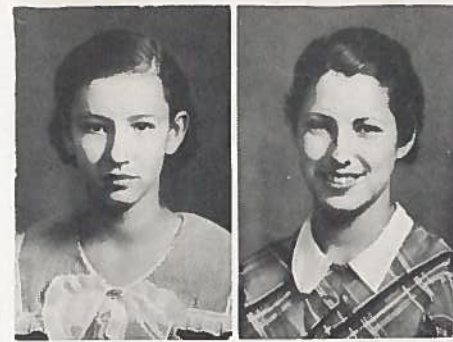
LOUISE BARNES

EDWARD BARTLETT



BYRON ERL FITZGERALD

ROY ALFORD



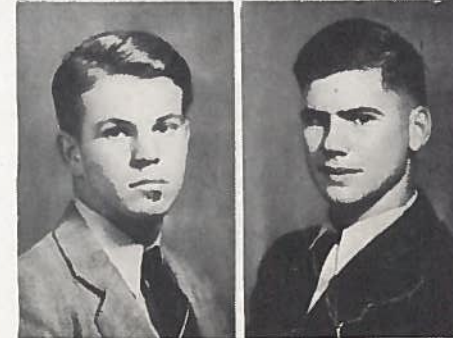
ANNIE FRANCIS CONE

LOU CILLE DUNCUM



BESSIE DOSS

JEANNE MAY DOSS



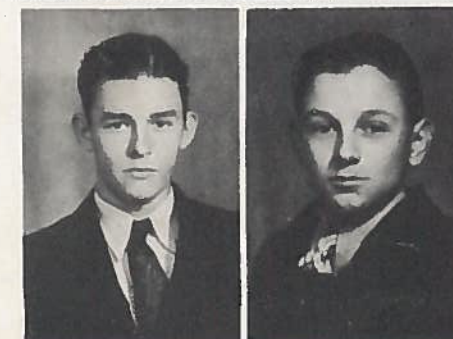
ED EDWARDS

KENNERD DOSS



CARRIE CURRY

WOODROW CURRY



VAUGHN MCGUYER

MAURICE FERRARI



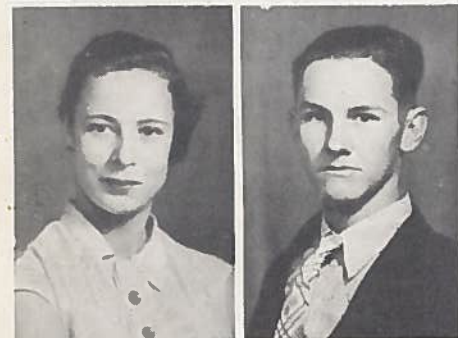
HELEN MENN

BONNELLE HUBERT



MARIE GRISSOM

ANGELINA JAIMES



SAPHRONIA LONGMIRE

JAMES MCGUIRE



LAVON HYDE

FINIS KEETON



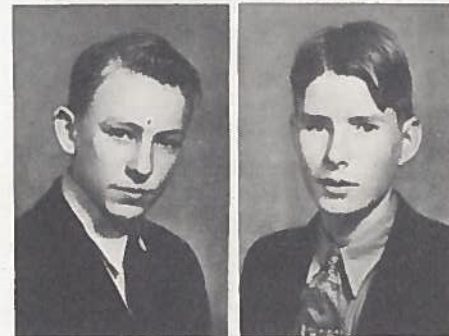
NOVA LEE HIRT

ELIZABETH HOELZEL



IRENE SEELKE

BOBBIE RAGAN



JACK WALLACE

BRADY SIDES



LAURA SUE ROBINSON

JOE NEWTON OWENS



LOIS NEELY

FITZE BRUNETTE VOYLES



ROSELINE DOCKALL

JOSEPHINE DOCKALL



"IRENE"



"ANN"

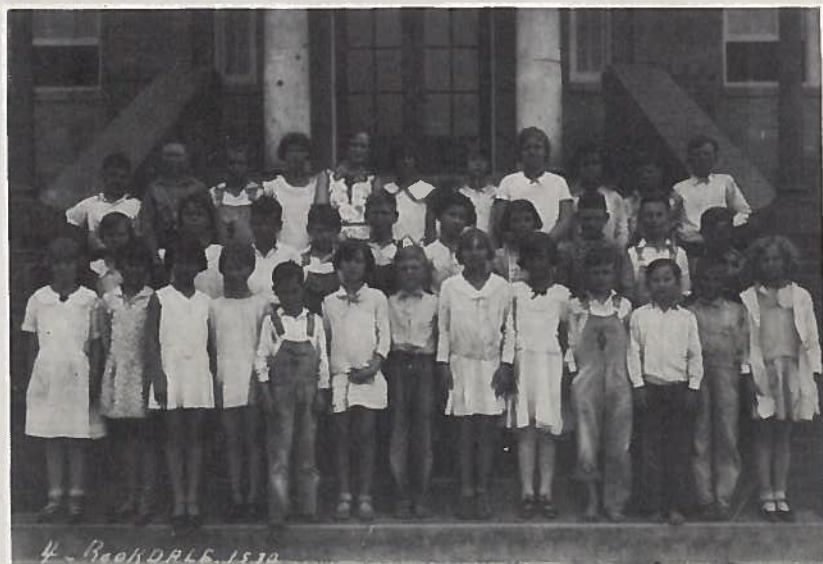


"Sap"



"FITZGERALD"

"When we were very young"



4 - RECORDS 1570

The Juniors of '36 in 1930



MALCOLM GEE  
President



WALTER B. LANFORD  
Vice-President

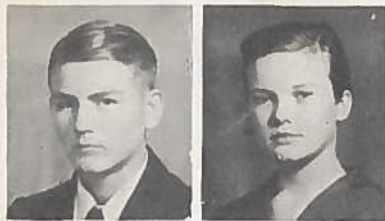


DOROTHY PRUETT  
Secretary



EDWARD BAKER  
Treasurer

Sophomores



HOWARD AVRETT



IOLA CHRISTIAN



LEONARD DOSS, JR.



HUBERT CAYWOOD



QUEBE DYER



JOHN EDMONDS



KENNETH CRIDDLE



LLOYD DYER

ELEANOR BACKHAUS

MARY SID ALLEN

LARRY SCROGGINS

KATHRYN BALDRIDGE

B. G. BARBER

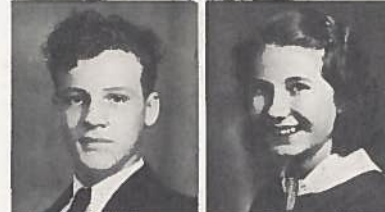
EVELYN BEARD

A. G. BRAHM

ORALE CAFFEY



EDWARD LUCKEY



WELTON KYLE



FLOYD FOSTER



CHARLES FRAZER



LUCILLE LUETGE



ALLEN MCGUIRE



LOUISE ZIMMER



EUGENIA WOLF



ROSE ELLIS



JESSIE MAY FERGUSON



EDELL KIRCHENWITZ



ELLEN JOYCE FLAKE



JOHN ALBERT GARNER



BETTY JEAN GIBSON



BUSTER GORE



LLOYD GUTHRIE





RAVENELL ROLAN

RUTH SMITH

GENEVA NATEN

OPAL TREADWELL



"ELLEN JOYCE"



"Eugenia"



3 - ROCKDALE 1930

SOPHOMORES OF '36 IN 1930

36 37  
37 38  
38 39  
39 40



CHARLES MOODY  
President



DICK HAIRSTON  
Vice-President

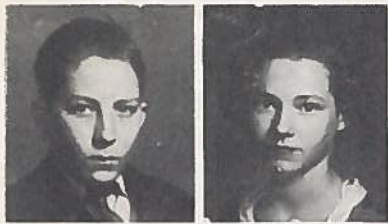


ELDRIDGE WILLIAMS  
Secretary



LOUISE KORNEGAY  
Treasurer

# Freshmen



LEWIS L. BRADLEY



FRANK DYMKE



CORA LEE BIRDWELL



ERVIN BOWNDS



MARY ALICE FERGUSON



MARY CURLEE



KENNETH BEXLEY



REX BRUCE BARTLETT



OPAL ABERNATHY



KATHLEEN CUNNINGHAM



C. L. DUNHAM



MADIE EADS



ELOISE DYER



BILLIE COLVIN



SHIRLEY MERLE BOSWELL



VIRGINIA LEE BAXTER



MARGARET HOLLIDAY



JOHN M. WEED JR.



WILLIE BELLE MORELAND



CURTIS FOSTER



DORIS NEAL



WILBURN HOLDER



ROBERT LEE MENN



WILLINE HAELBIG



ROY LARGENT



DOLLY ZIMMER



CLYDE CLAYTON FRANKLYN



ARNOLD MASON



ALINE GEGELIA GEST



CLARA LORENZ



ELEANOR HOWELL



BOB HORTON



DOROTHY WINKLER

EVA NELL PUGH

ROGER SMITH

HELEN LOUISE SMITH

LA VERNE PRUETT

RUTH SIMMS

CELESTE SWAFFORD

LELAND H. WILLIAMS

CLYDE SMITH

HELEN LOUNIETA RAGAN

CLAUD DEAN SCROGGINS

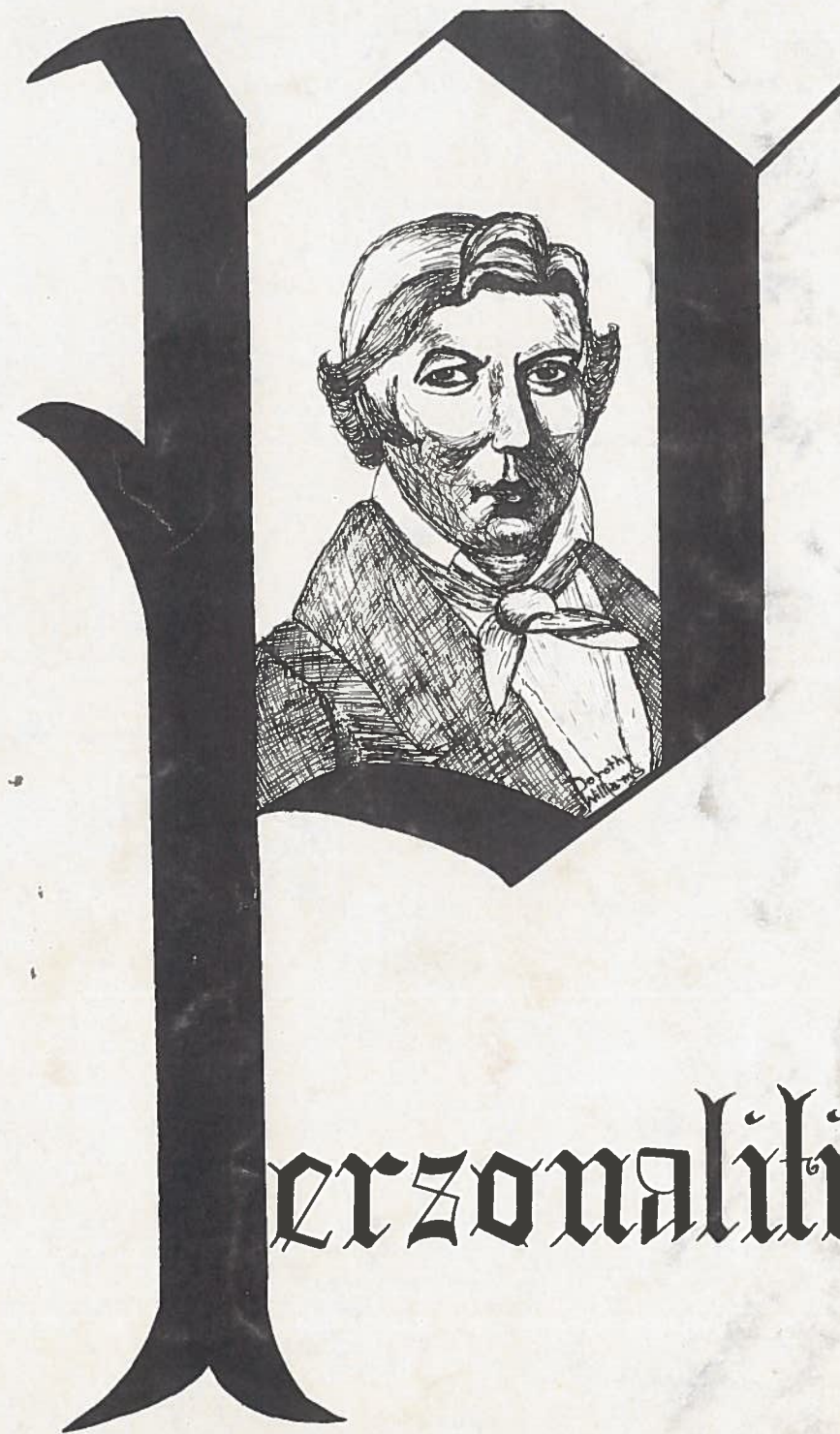
COULTER V. STEIN

BUREN B. OLDHAM

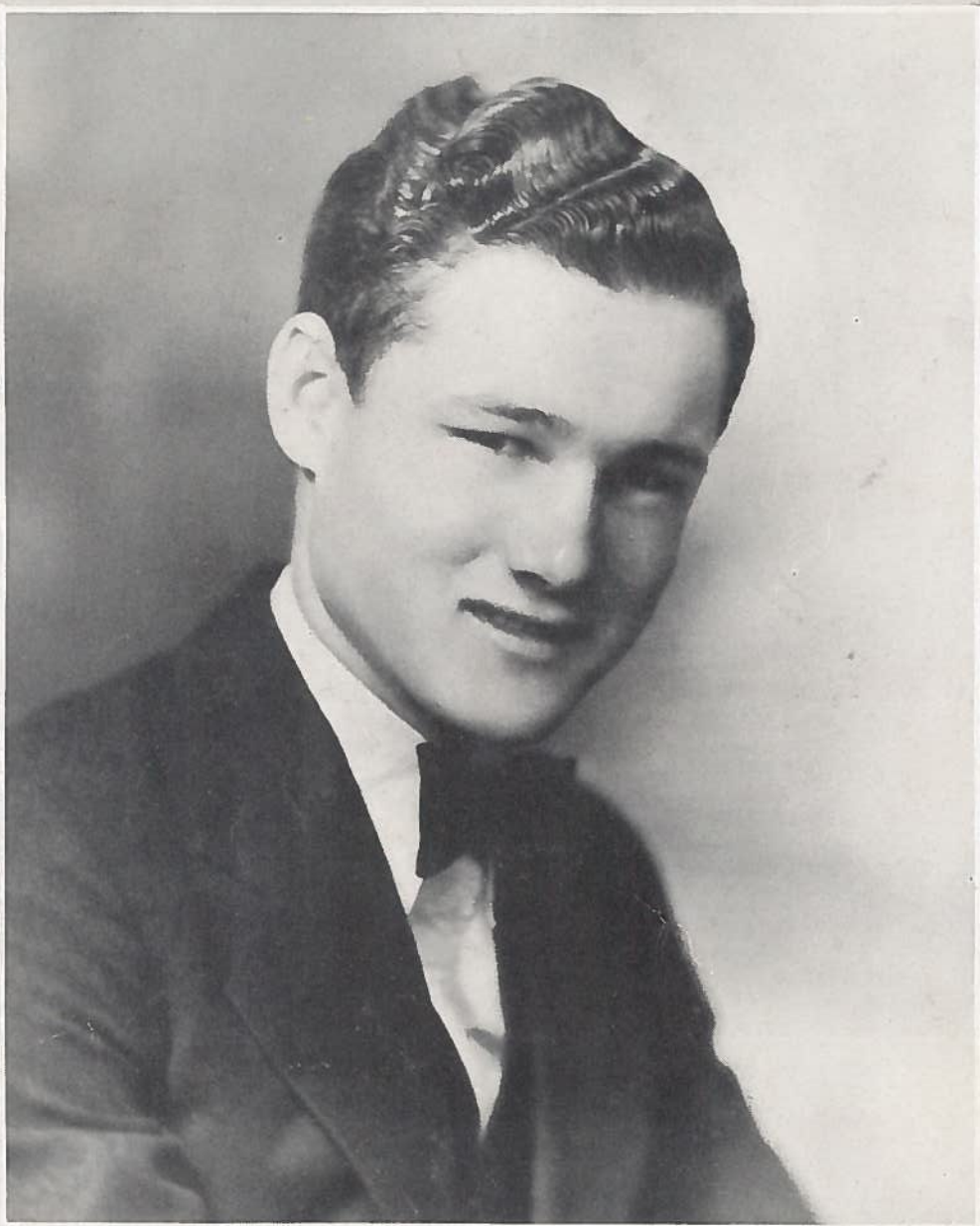
NANCY INEZ SMITH

ELIZABETH JOY O'BIER

ROBERT LEE PHILLIPS



Personalities



Graham Kyle  
Football Hero



Jane Gunn  
Football Queen



Nannette Roundtree  
Princess Charm



Tommy Gosfield  
Prince Charmin



Haverne Kentroe  
Lady Beautiful



OWER  
and  
recision  
Kyle

A  
t  
h  
l  
e  
t  
i  
c



G  
o  
u  
n  
c  
i  
l

HUBERT DENNIS  
Coach



JOHN M. WEED  
Pres.



S. C. MILES  
Supt.



V. H. COOKE  
Sect'y.



DR. T. S. BARKLEY



FRED PALMER



EDDIE NOACK



MAX FERRARI



DENNIS (COACH) LARGENT, LANDIS, GEE, MCGUYER, CURRY, MIDDLETON, NEELEY,  
VANMETER, COFFIELD, G. KYLE, W. KYLE, FERGUSON, DEAN

WEED, BAKER, EDMONDS, MCGUYER, CLARK, CAST, SMITH, POSEY, FITZGERALD, DOSS,  
PEDERSON, DYMKE, FERRARI.

# Football

1935 SCHEDULE  
SEPT. 21,

ROCKDALE 6—ALLEN ACADEMY 12

SEPT. 27,  
ROCKDALE 13—CALDWELL 6

OCT. 4,  
ROCKDALE 12—TAYLOR 19

OCT. 11,  
ROCKDALE 13—ROSEBUD 27

OCT. 18,  
OPEN DATE

OCT. 25,  
ROCKDALE 39—GEORGETOWN 0

NOV. 1,  
ROCKDALE 27—GRANGER 0

NOV. 9,  
ROCKDALE 0—CAMERON 7

NOV. 18,  
ROCKDALE 39—THRALL 7

NOV. 25,  
ROCKDALE 14—NAVASOTA 0



GRAHAM KYLE  
Football Hero  
Quarter



JANE GUNN  
Football Queen



ROCKDALE-ALLEN ACADEMY

Rockdale's fighting Tigers opened up with a loss to Jakey Wilson's bruising Allen Academy Ramblers to take the count 12-6. The Tigers did surprisingly well against the heavier and older Junior College team.

The fleet-footed Harvey Dean showed his last season form when he pulled down a beautiful pass from quarterback Kyle, triple-threat back of last year's team, and galloped away 68 yards for Rockdale's lone tally. Landis did well for a first year man against so large an opponent.

ROCKDALE-CALDWELL

Flashing a brilliant and a better defense, Rockdale High School's fighting Tigers drove out a 13-6 decision over the Caldwell Hornets. Again fighting against heavy weight odds, the local line held up and showed a formidable machine, light but too fast for the heavier Burlington crew.

With Largent and Middleton leading the interference with leg-breaking blocking, Kyle, Dean and Curry shot the works. Gee, young Tiger center, and Captain elect for next year, turned in a good job as the pivot spot.



HARVEY DEAN  
Co-Captain  
Back

### 24 TEAMS WILL TRY COMEBACK AFTER

Elusive Bob Douglass, hefty quarterback led the plumed warriors of Taylor to water over the Bengals of Rockdale to the tune of 19-12 in their annual fray--this year played on the Duck Pond in Taylor. Pass connections Kyle to Coffield, Dean, and McGuyer failed because of an injured Kyle thumb early in the game.

Half a dozen good scoring chances for Rockdale bogged down inside the Duck 15.

Kyle scored first for the Tigers, with a powerful drive from Rockdale's 3. Dean followed short order with a 50 yard gallop for the second Bengal tally. Tackles Vanmeter and Neely did well in this game.



VERNON MCGUYER  
Co-Captain  
End



ROCKDALE-ROSEBUD

The power and stamina of the royal Bengals of Rockdale is limited. It lasted three quarters. Then came the princely Panther Parade, belittling the Dennismen 27-13. Had the Tigers only boxed Box, they would have been in a thornless bed of Rosebuds, but a team replete with stars, timing spins to the split second with speed and power alike was too much.

Dean and his advance man Middleton completed several nice jaunts. All district guard Largent turned in a swell job against Parrott, also considered all district by some scribes.

ROCKDALE-GEORGETOWN

Passing, punting, running rings around a weaker Georgetown team, the Rockdale Tigers' cry of victory soared far and wide over Snyder field that eventful night. The Dennismen rollicked at will, driving the line for yards without end, passing short, long, and every other way, and making decisive a most sound beating, to win 39-0, with a team that seemed far more superior than the score indicated.

The best exhibition of a strong line from wing to wing was given by the regulars composed of McGuyer, Neely, East, Largent, Vanmeter, Coffield and Posey, who plugged the center hole nicely. Posey undoubtedly has given a great exhibition of ball passing. While Gee has had the edge on blocking.

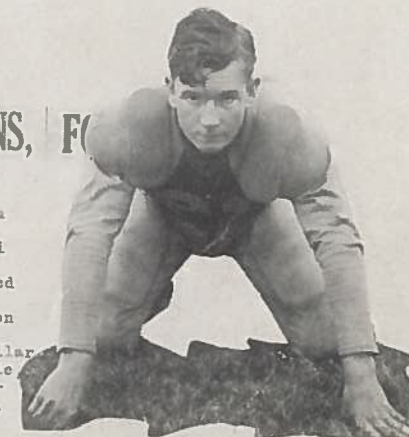


HUBERT DENNIS  
Coach

### SEASON FINISHED WITH FIVE WINS, FO

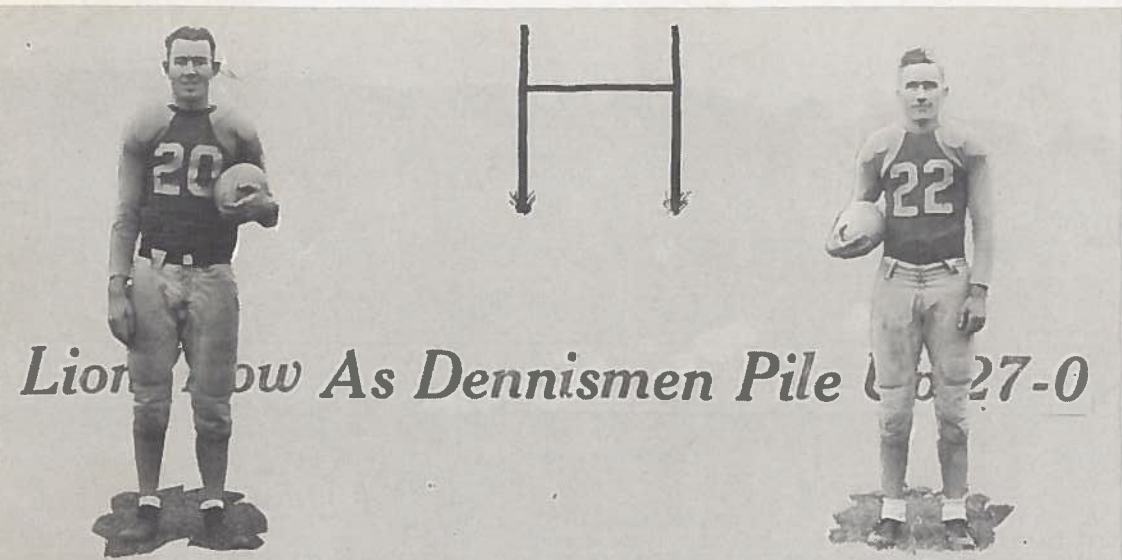
ROCKDALE-GRANGER

Making it two in a row for the win column the Rockdale Bengals defeated a strong Granger team 27-0, a powerful football machine, that had they had smarter field bossing might have romped on Rockdale. As before G. Kyle, the outstanding bid for Rockdale's place on the mythical all-central Texas team, and all district quarterback, was stellar attraction. The touchdown mate of Kyle Dean, flicked his heels at all who approached him after a drive off tackle, set loose and reared 75 yards for the first tally. Gurry was invincible.



ROMA LARGENT  
All District Guard





**Lions Now As Dennismen Pile Up 27-0**

BOYD MIDDLETON  
Back

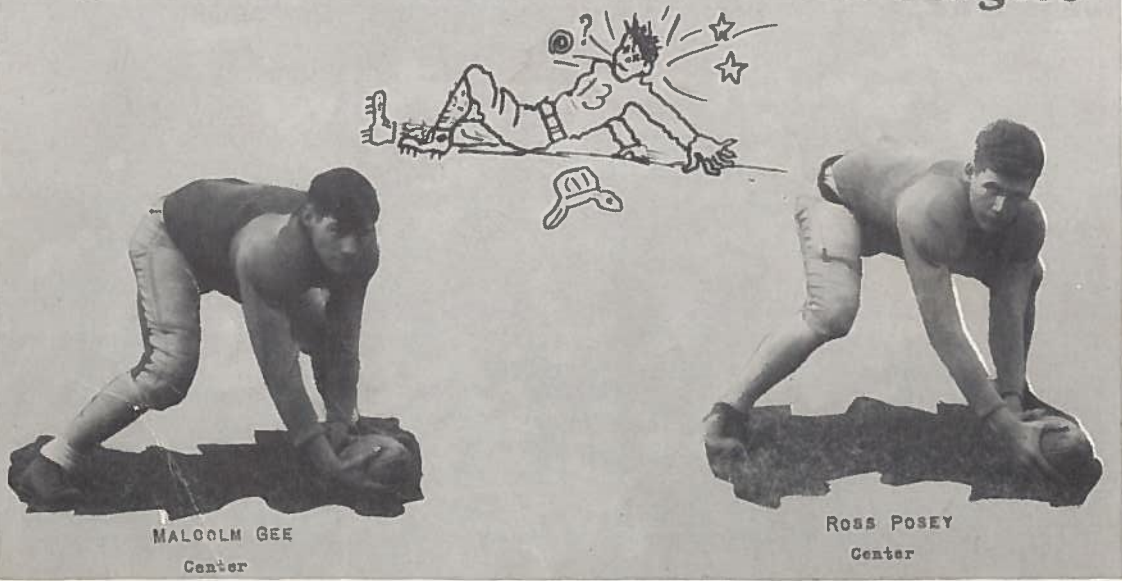
ALVIN CURRY  
Back

**ROCKDALE-CAMERON**

AT THE ANNUAL GRUDGE BATTLE IN CAMERON, THE YOEMEN DEFEATED THE TIGERS WITH THE CLOSE SCORE OF 7-0. AT ONE TIME THAT STERLING DEFENSE OF THE TIGERS LAGGED. AT THAT SAME TIME CAMERON HAPPENED TO BE PASSING. THE NEXT MAIN THORN IN THE SIDE OF THE YOEMEN BESIDES THAT OF SIX GRIZZLED LINESMEN WAS THE HEADS-UP PLAYING OF ALVIN CURRY, SENIOR HALFBACK, AND HIS THRILLING PASS INTERCEPTIONS AS WELL AS HIS SUPERHUMAN PUNT RETURNS.

TRYING HARD TO GET LOOSE, KYLE, AND DEAN, HERETOFORE THE OUTSTANDING TIGER THREATS, FAILED TO GET STARTED; ON THE OTHER HAND JOE MCLEAN OF CAMERON SEEMED AT HIS BEST.

**Tigers Plaster 39-0 Defeat On Eagles**



MALCOLM GEE  
Center

ROSS POSEY  
Center



**Tigers to Close Season With Thrall**

JACK FERGUSON  
End

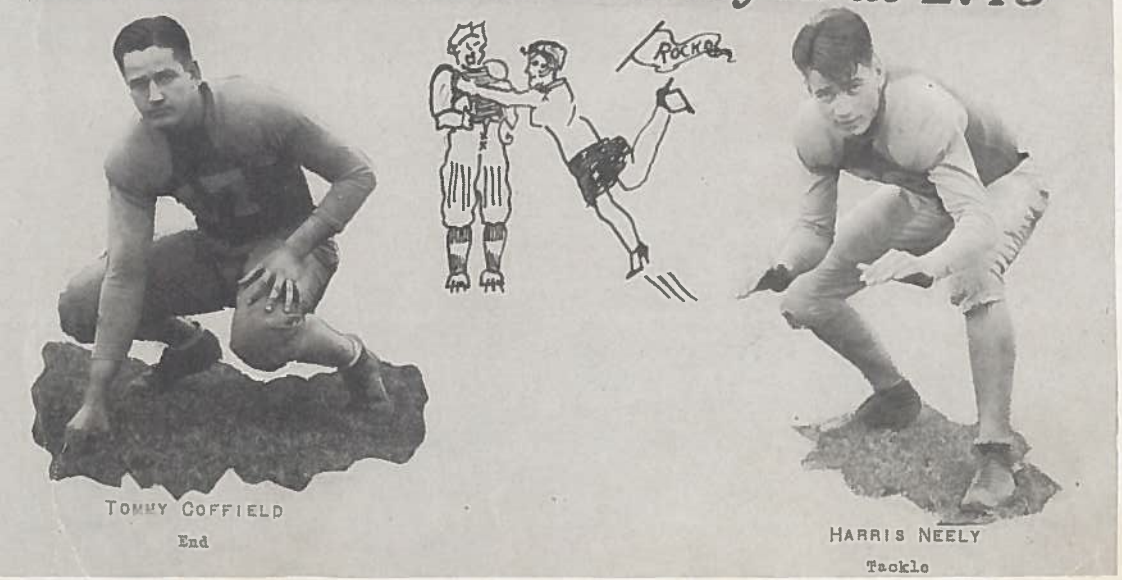
ELBERT VANMETER  
Tackle

**ROCKDALE-THRALL**

UNDER THE CLEVER LEADERSHIP OF GRAHAM KYLE, ROCKDALE RAN UP A SCORE OF 34-7 ON THE THRALL TIGERS ON LOCAL FIELD. FIVE PLAYS AFTER THE KICKOFF, KYLE MADE ROCKDALE'S FIRST POINTER. BIRKELBACK, ALL DISTRICT BACK SCORED FOR THRALL. PEDERSON, CLARK, DOSS, FERGUSON, FITZGERALD, LANDIS, GEE, AND W. KYLE PLAYED MOST OF THE GAME.

COFFIELD AND MCGUYER WERE OUTSTANDING PASS RECEIVERS AND LARGENT AND NEELY PLAYED WELL ON THE DEFENSIVE WITH ROSEY AND CAST COMING IN ON SOME GOOD PLAYS.

**Thrall Game Will Be Played at 2:45**



TOMMY COFFIELD  
End

HARRIS NEELY  
Tackle



## Tigers Win Places On Mythical Eleven

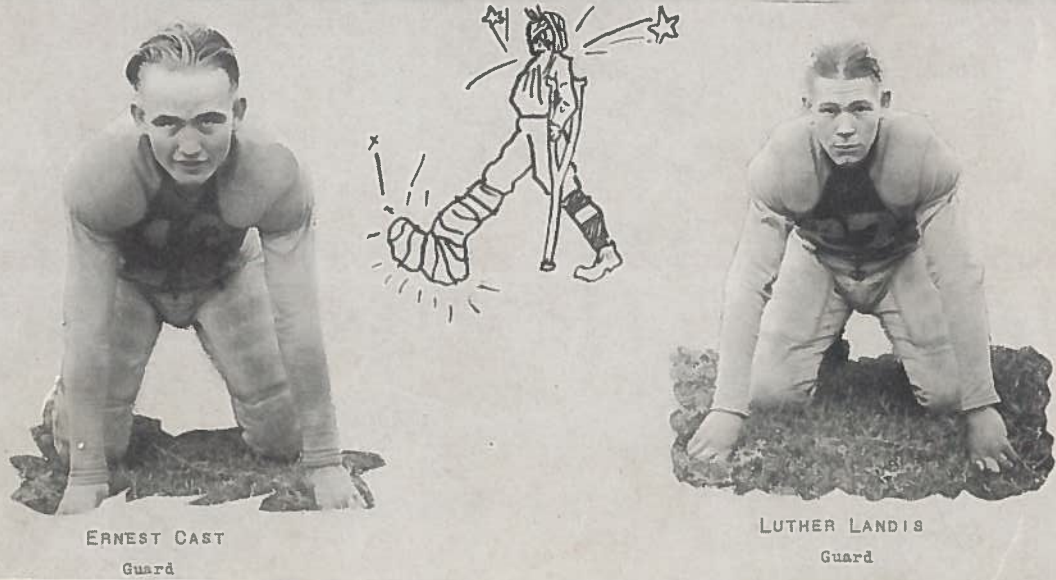
WOODY CLARK  
Back

WELTON KYLE  
Tackle

### ROCKDALE--NAVASOTA

ANOTHER STRONG TEAM WENT DOWN AT THE HANDS OF THE REGAL ROCKDALE TIGERS TO THE TUNE OF 12-0. PRESTWOOD, 210 POUNDS, WAS THE STAR FOR THE OPPOSITION WITH HIS CLOSE QUICK PUNTS. KYLE AGAIN WAS THE OUTSTANDING STAR. THE TIGERS SCORED AFTER DRIVING 90 YARDS FOR A TOUCHDOWN. CURRY WIGGLED ACROSS THE GOAL FROM THE 50 FOR THE NEXT SCORE. NAVASOTA UNDOUBTEDLY HAD THE STRONGEST LINE PLAYED AGAINST THIS YEAR. FOR ROCKDALE, COFFIELD, CURRY, LARGENT AND CAST STOOD OUT IN THE LINE-UP.

## Rosebud Panthers to Meet Tigers Here

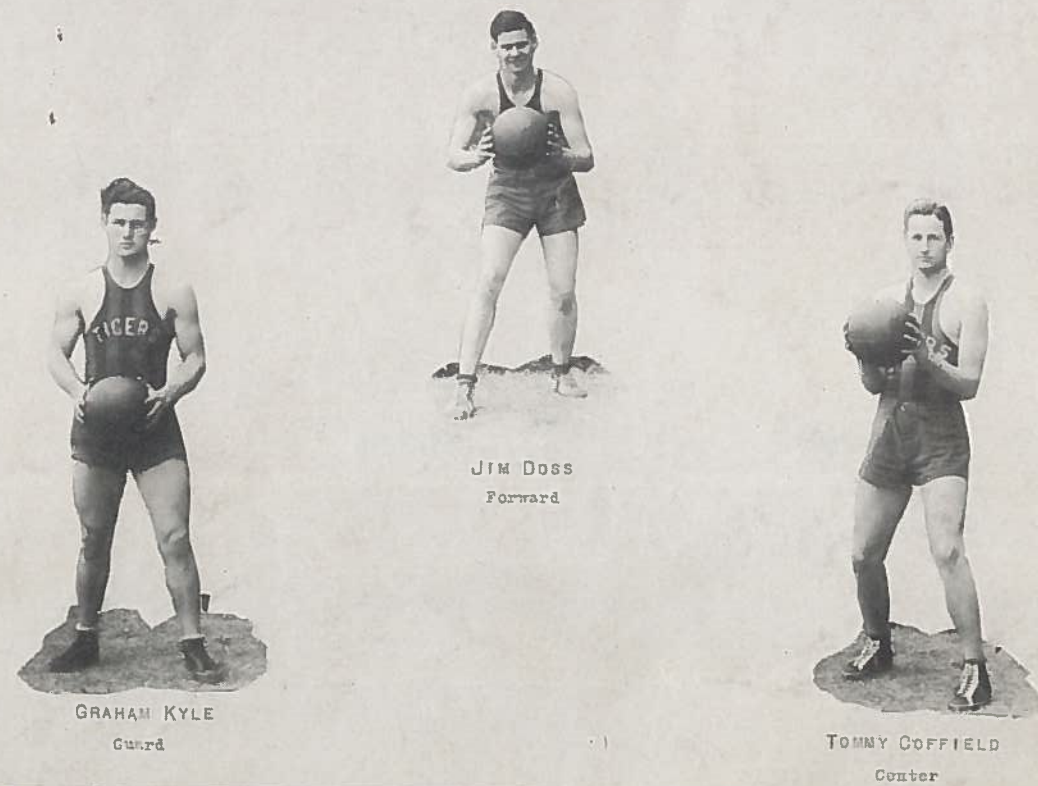


ERNEST CAST  
Guard

LUTHER LANDIS  
Guard



# Basketball



GRAHAM KYLE  
Guard

JIM DOSS  
Forward

TOMMY COFFIELD  
Center



MIDDLETON  
Forward



DEAN  
Guard

SCHEDULE FOR 1935-36

Rockdale.....23	Sharpe.....15
Rockdale.....15	Thorndale.....25
Rockdale.....19	San Gabriel.....17
Rockdale.....14	Cameron.....15
Rockdale.....13	Ben Arnold.....24
Rockdale.....16	Sharpe.....10
Rockdale.....20	Thorndale.....21
Rockdale.....13	Rosebud.....31
Rockdale.....18	Gause.....14
Rockdale.....35	Hearns.....16
Rockdale.....17	Cameron.....18
Rockdale.....24	Thorndale.....24
Rockdale.....16	Rosebud.....47



A. CURRY  
Guard



W. CURRY  
Center

Rockdale's boy "demons o' the boards" didn't fare so well this season. They were eliminated early in the County Meet, which was won by Cameron.

Hubert Dennis can be congratulated on his ability to develop a fair team from practically no material, (his B. B. team played good football on the court).

The team won 5, lost 7, tied 1. The points of the Tigers were almost the same as the opposition.



DEAN, DOSS, KYLE, MIDDLETON, A. CURRY, W. CURRY, COFFIELD, DENNIS, Coach



# TIGRESSES



LAURA EILAND  
Guard



MABEL LENE GRAVES  
Coach



ALCIE HOLLIMAN  
Forward



BARNES, SCARBROUGH, HOLLIMAN, SEELKE, TIMMERMAN, EILAND, BROWN, GRAVES, (COACH), SIDES, R. DOCKALL, HOELZEL, J. DOCKALL, ZIMMER.

MORE OF ROCKDALE'S ROYAL BENGALS WHO HAVE DONE THEMSELVES PROUD ARE THE R. H. S. TIGRESSES. THE GREATEST TEAM EVER TO GRACE THE BOARDS OF ROCKDALE'S GYM HAS PASSED ON. THROUGH THE COUNTY MEET IN A BREEZE, IT TOOK THE FIRST PLACE HONORS BY WINNING FOUR HARD GAMES FROM FLAT, TURNERSVILLE, BUFFALO GAP, AND INDIAN GAP.

THE TIGRESSES HAVE PILED UP THE ASTOUNDING SEASON TOTAL OF 1080 POINTS IN 25 GAMES TO 548 FOR THE OPPOSITION. 24 POINTS WERE THE LOWEST SINGLE GAME TOTAL.

THEY WERE UNDEFEATED UNTIL THEY LOST TO WINNSBORO IN WOOD COUNTY IN THE SEMI-FINALS OF THE STATE A A U MEET AT PLAINVIEW HELD IN MARCH. WINNSBORO WINNING THIS MEET.

LOUISE BARNES, FORWARD, AMASSED A TOTAL OF 559 POINTS. THE TEAM WAS MOST SPLENDIDLY COACHED BY MISS MABEL LENE GRAVES.



SEELKE  
Guard



BARNES  
Forward



J. DOCKALL  
Forward



R. DOCKALL  
Forward

SCHEDULE FOR 1935-36

Rockdale.....	32	Thorndale.....	20
Rockdale.....	33	Thorndale.....	16
Rockdale.....	51	Sharpe.....	50
Rockdale.....	53	Thorndale.....	12
Rockdale.....	24	Thorndale.....	22
Rockdale.....	54	San Gabriel.....	28
Rockdale.....	64	Cameron.....	29
Rockdale.....	34	Ben Arnold.....	3
Rockdale.....	32	Sharpe.....	9
Rockdale.....	38	Thorndale.....	8
Rockdale.....	31	Rosebud.....	12
Rockdale.....	23	Gause.....	11
Rockdale.....	52	Hearne.....	7
Rockdale.....	56	Cameron.....	6
Rockdale.....	33	Rosebud.....	26
Rockdale.....	44	Thorndale.....	23
Rockdale.....	46	Flat (Coryell Co.).....	15
Rockdale.....	29	Turnersville (Coryell Co.).....	26
Rockdale.....	50	Buffalo Gap (Taylor Co.).....	25
Rockdale.....	33	Indian Gap (Hamilton Co.).....	27
Rockdale.....	36	Ad Hall.....	4
Rockdale.....	28	Ad Hall.....	14
Rockdale.....	55	Shallowater (Lubbock Co.).....	43
Rockdale.....	48	Muleshoe (Bailey).....	47
Rockdale.....	38	Winnsboro (Wood Co.).....	52



SCARBROUGH  
Guard



M. TIMMERMAN  
Guard



# Track



KYLE  
Javelin-Broad Jump



MIDDLETON  
Broad Jump-Javelin-High Jump



DEAN  
220 L R -100 Dash-220 Dash



COFFIELD  
Shot-Discus



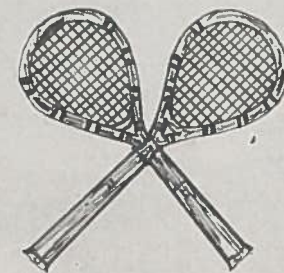
CURRY  
120 H R-440 Dash-High Jump-220 L R



VANMETER  
Discus-High Jump



SMITH  
Junior Singles



SEIBERT  
Senior Singles

# Girls Tennis



KIRK, Coach, R. SMITH, PRUETT, FERGUSON, SEIBERT, RAGAN,  
M. SMITH, NOACK, HOWELL



FERGUSON and PRUETT  
Senior Doubles





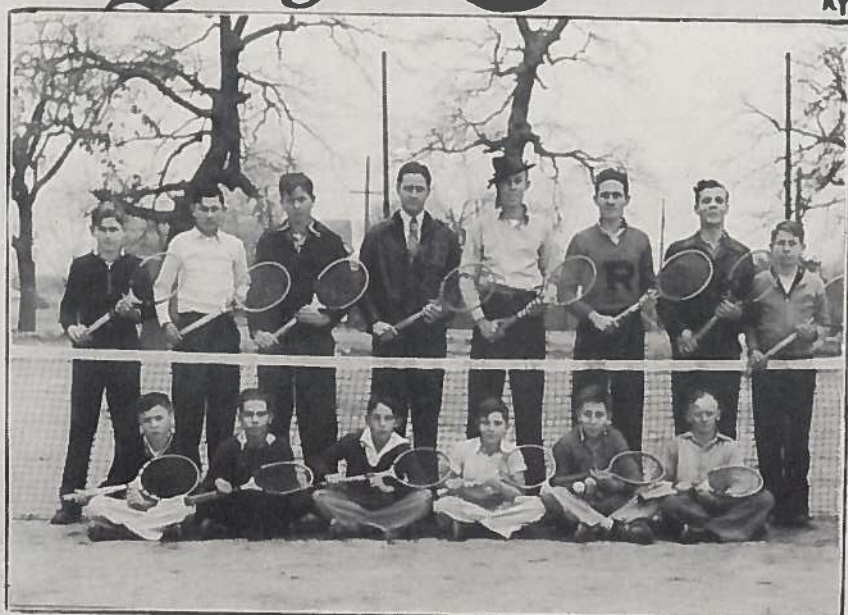
COFFIELD  
Senior Singles



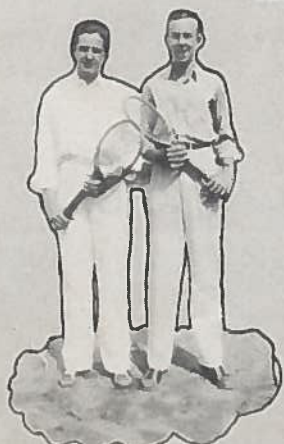
SEIBERT-BUNIVA  
Junior Singles and Sub.

# Boys Tennis

Kyle



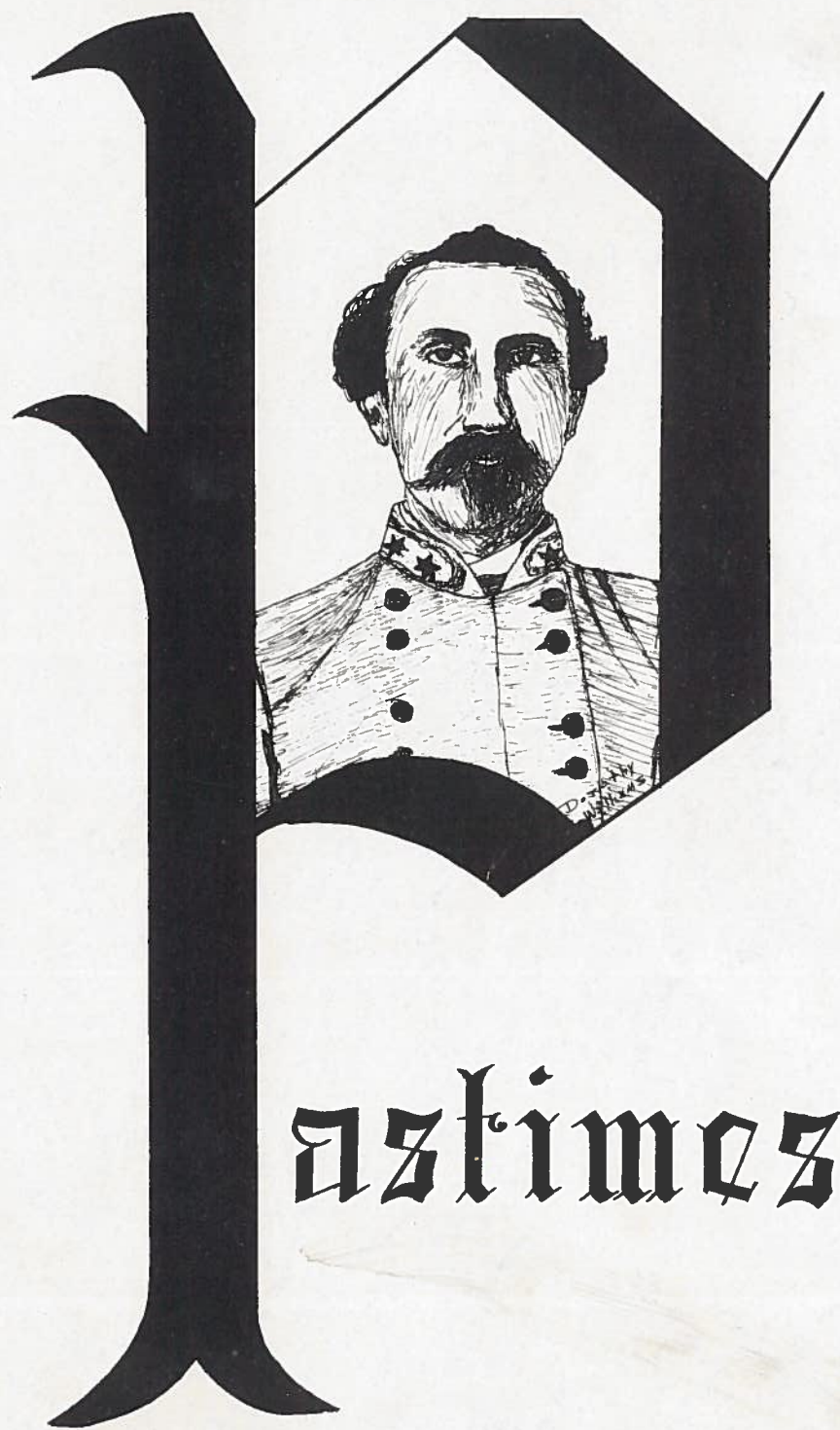
MOODY, FLOYD, GUTHRIE, COFFIELD, NELSON, FERGUSON, W. KYLE, R. SMITH,  
BUNIVA, COLVIN, SEIBERT, B. SMITH, BRADLEY, FOSTER.



COFFIELD and NELSON  
Senior Doubles



R. SMITH and GUTHRIE  
Junior Doubles



astimes

# Debate



HANNETTE ROUNTREE



DOROTHY WILLIAMS



BILL FUCH



BILLY WISBY

# Extempore

Kyle



DOROTHY PRUETT  
Winner 1935



KENNETH GRIDDLE  
Winner 1935



HANNETTE ROUNTREE  
President



BETTYE LOU GARRETT  
Sponsor



ANN SEIBERT  
Secretary

# Home Ec Club

Kyle



STORK



MENT



RENFROE



McCAWLEY



ROSEA



PRUETT



CHRISTIAN



SMITH



BACKHAUS



EILAND



ALLEN



CONE



WOLF



TIMMERMAN



STEIN



D. WINKLER



NEAL



KORNEGAY



PUGH



J. FERGUSON

Organized 1928-'29

First President—ALMA TIMMERMAN

First Secretary—LOIS GUNN

The object of this club is to provide opportunity for social contact and to work together for mutual advancement and to develop an appreciation of the part that Home Economics plays in the homes of Texas.



LORENZ



SCROGGINS



HOLLIDAY



SWAFFORD



SIMMS



BAXTER



M. A. FERGUSON



N. SMITH



R. SMITH



BIRDWELL



GEST



HOWELL



EADS



G. KYLE, SIDES, A. CURRY, PUGH, G. MACKIE, T. A. WEEMS, DEAN; V. MCGUYER, W. CURRY, BEARD, GORE, MIDDLETON, COFFIELD, BOSS; GEE, McVOY, W. DYER, LANFORD, W. MACKIE, FERRARI, OLDRAM, CHERRY, ROBINSON, H. BARTLETT; SCROGGINS, ALFORD, BRAHM, E. KIRCHENWITZ, EDMONDS, VANMETER, LANDIS; LORENZ, MUSTON, V. MCGUYER (Pres.), MURPHREE (Sweetheart), MAXWELL, FLOYD, PEARSON, KEY; B. WILLIAMS, J. BARTLETT, S. WILLIAMS, FRANKLYN, BRADLEY, COLVIN.

# F.F.A.

HISTORY OF VOCATIONAL AGRICULTURE IN R. H. S.

Vocational agriculture was added to the studies of Rockdale High School at the beginning of the semester of 1933.

Mr. Maxwell, vocational teacher had enrolled under him forty-six boys taking V. A. I. Under his leadership these boys were organized into an F. F. A. chapter.

The following officers were elected by these boys and sent to Thorndale to be initiated as greenhands; BOB TYLER, President; HERBERT CAYWOOD, Vice President; TOMMY COFFIELD, Secretary; GRAHAM KYLE, Treasurer; MARSHALL FLOYD, Parliamentarian; VERNON MCGUYER, Watch Dog; OLIVER GEE, Song Leader; MARK TOWERY, Yell Leader.

The officers listed above initiated the greenhands of Rockdale on Thursday, March 1st. They started studying for the annual state judging contest, held at A & M April 16 and 17, 1934. The ones representing Rockdale who went are as follows; Dairy Cattle judging, VERNON MCGUYER, CLAUDIE MUSTON and HERBERT CAYWOOD. Crops Contest, TRAVIS KEY, HENRY TYLER, OLIVER GEE and WALTER HOLLIMAN. Soil Conservation, TOMMY COFFIELD, ROBERT LEE BOUNDS, MARSHALL FLOYD. These boys placed better than the average in all contests.

During the vacation months of 1934 eighteen boys attended the district summer encampment.

At the beginning of the first semester of 1934 an F. F. A. meeting was held and the following officers were elected; TOMMY COFFIELD, President; VERNON MCGUYER, Vice President; CLAUDIE MUSTON, Secretary; COOKIE GUTHRIE, Treasurer; BUTCH MCGOY, Watch Dog; GRAHAM KYLE, Reporter; LUTHER LANDIS, Parliamentarian; ROBERT FLOYD, Historian.

(Continued)



Officers for the school term of 1935-36 were VERNON McGUYER, President; LUTHER LANDIS, Vice President; CLAUDIE MUSTON, Treasurer; TRAVIS KEY, Reporter; ELBERT VANMETER, Parliamentarian; HARRIS NEELY, Watch Dog.

At the Milam County Fair Rockdale's F. F. A. chapter took thirteen prizes and three second prizes for the agricultural exhibit furnished by the boys; winning first prize on the booth. Later the exhibit was carried to the Temple Fair, winning ten dollars.

March 3, 1936, ten boys of the local chapter attended the Milam County Federation Banquet, three of the boys taking part in the program.

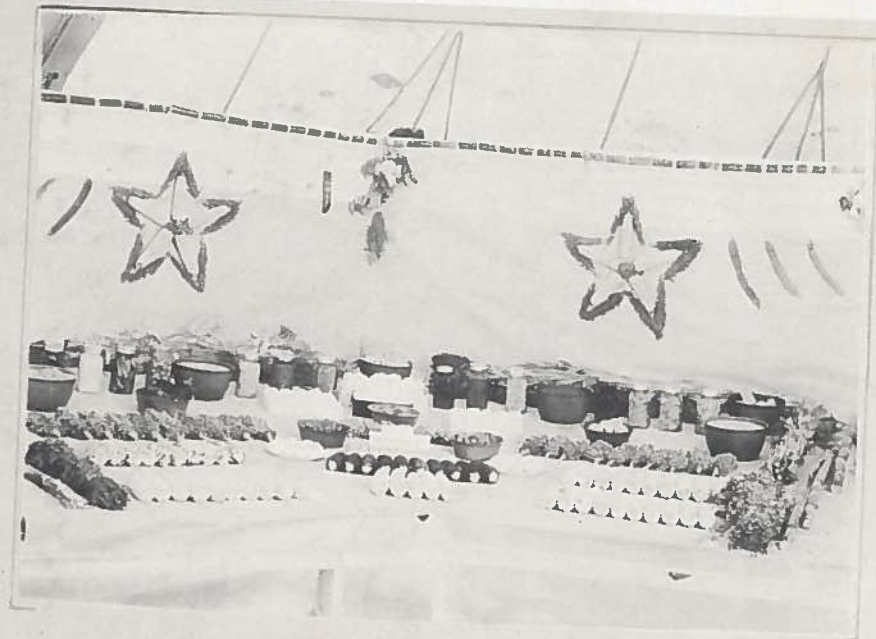
On October 14th, 1934, twenty-one boys of the Rockdale Chapter attended the Dallas Fair. On April 1, 1935, the following teams were sent to the judging contest at A & M College; Dairy Judging, BOYD MIDDLETON, ELBERT VANMETER, TRAVIS KEY; Soil Conservation, CLAUDIE MUSTON, DAVID CORDER, B. F. STEVENS; Live Stock Judging, TOMMY COFFIELD, ADOLPH OWENS, VERNON McGUYER.

BOYD MIDDLETON won two places out of three hundred and fifty boys in judging Dairy cows. The soil conservation team won second place in spacing terraces. Thirty boys attended the summer encampment at Georgetown during the vacation of 1935. The boys took active part in all the contests and won as many points as the total of the other thirteen chapters, seventy points out of one hundred.



A. MASON, OWENS, CAFFEY, L. DYER.  
 KORNEGAY, WILLIAMS, H. ELLIS, GRAY, WALLACE, C. DYER, STEIN, A. McGUIRE, KEETON, GERSTEN-  
 BURGER, E. ELLIS, GUTHRIE, GARNER, DUNNUM, PHILLIPS, AVRETT, WOOD.  
 HAIRSTON, SIMMONS, DYME, BEXLEY, FOSTER, H. DOSS, BARBER, LARGENT.





F. F. A. BOOTH, ROCKDALE CHAPTER, FIRST PLACE IN MILAM COUNTY FAIR 1935.

The booth was collected and selected by 3rd year F. F. A. boys from the local trade territories.

The material and exhibits were arranged by the following boys: TRAVIS KEY, WALLIS DYER, CLAUDIE MUSTON, JAMES G. PEARSON, ROBERT FLOYD, WALLACE DYER.



VOCATIONAL AGRICULTURE CLASS OF 1934-35.

MCCOY, ABERNATHY, FERGUSON, H. WILLIAMS, MCGUYER, G. KYLE, GORDER, KIRCHENWITZ, W. CURRY, NEELY, MIDDLETON, AVRETT, OWENS, LANFORD, MCGUIRE, W. KYLE, VANMETER, STEPHENS, J. KYLE, W. WILLIAMS, ROGERS, JENKINS, BEARD, MUSTON, MILLER, McVOY, W. SMITH, GEE, RAGAN, BRAHM, McNAMEE, EDWARDS, CURLEE, LORENZ, GORE, LANDIS, MAXWELL, LUCKEY, FLOYD, DEAN, LARGENT, COFFIELD, GRAYES, DYER, ROBINSON, BAKER, G. MACKIE, CRIDDLE, FERRARI, KEY, LANFORD, EDMONDS, SCROGGINS, SMITH, FOSTER, DYER, MACKIE, PEARSON.



PEARSON  
Asst. Leader



ROUNTREE  
Leader



McCAWLEY  
Leader



NELSON  
Asst. Leader

# Wep Squad

Kyle



GUNN



HALE



PRUETT



SEIBERT



HYDE



WILLIAMS



LEE



CRUMP



DYMKE



SMITH



CURRY



WHITES



A. M. TIMMERMAN



EILAND



M. TIMMERMAN



CASS



BILLY NELSON-Ed.-in-Chief



FRED GRAVES-Sponsor



NANETTE ROUNTREE-Asso. Ed.

# Tiger Tales Staff



VIRGINIA HALE  
Society Editor



TOMMY COFFIELD  
Senior Reporter



JANE GUNN  
Feature Ed.



ANNE SEIBERT  
Junior Editor



GRAHAM KYLE  
F.F.A. Reporter



DOROTHY PRUETT  
Sophomore Reporter

# TIGER TALES

## TIGER TALES SNOOP INTERVIEWS JANITOR

Tom Engram Has Been Janitor of the Rockdale Public Schools for the Past Two Years

An interview with Tom Engram, janitor of the Rockdale Public Schools, was conducted last week for the "Tiger Tales" feature. Tom Engram has been in the job for two years. He has worked in Dunston, Illinois county, and in the fireman in Dunston. For the past year he has been working in Rockdale. He is a very efficient worker and is well liked by all who know him.

## TIGER TRACKS

By Billy Nelson

With one win and two losses, the Rockdale Tigers are lowly in the Taylor's scrapping ducks in their opening season.

## DORIS

The supreme success of the district (or are they?) will be the opening of October 31.

Despite the unsettled weather, in a sense added to the Halloween spirit, a large crowd attended the affair.

At five thirty, a parade was organized at the city hall by Miss Nettie and led through the main street of Rockdale by Silver Jean, who won first prize in the costume contest. Dorothy Buchanan and

against 26-6. Par-thers come with. Here is gone but Box remains. The row, an outstanding linesman, returns.

Our guesses or guess ran almost true. We at least picked the winner. Tomorrow night we are taking the Tigers at about a 13-6 pace. At Belton, Taylor will take on the Bengals. Belton looks good. Cameron's Yeomen will go to Georgetown and beat the socks off them.

## NINETEEN CLASS RINGS RECEIVED BY SENIORS

Nineteen members of the senior class received their class rings Thursday, October 24, from the Taylor Engraving Company.

The rings are very attractive and were given to the seniors at the date 1838.

On the other side of the shield is the date 1838. The shield is blue and gold.

The seniors were planning to pre-entitled "The Arrival of the W. H. Lyon and Miss were to direct the play had not then been chosen. Football practice had begun as coach. Rockdale championship for the two were, and with the material expected to win again.

The girls entertained the school with a party given at the school on Friday, November 16. The economics rooms were used, and refreshments of punch and sandwiches were served.

The following items are taken from the Tiger files of November 22, 1928:

As the final game of the season the Tigers met the Taylor Ducks on Friday, Nov. 28.

The seniors were planning to pre-entitled "The Arrival of the W. H. Lyon and Miss were to direct the play had not then been chosen. Football practice had begun as coach. Rockdale championship for the two were, and with the material expected to win again.

The girls entertained the school with a party given at the school on Friday, November 16. The economics rooms were used, and refreshments of punch and sandwiches were served.

## High School English Taught By New Contract Method

The State Teachers Association decided that the teaching in the different programs should be changed. In connection with the new contract method, the first grade work is being changed. The students are also starting an English room with a model room. The students are also starting an English room with a model room. The students are also starting an English room with a model room.

## BIG CROWD DRAWN BY HALLOWEEN CARNIVAL

The Parent-Teacher Association Nets A Net of \$136.82 from Carnival of Taylor's Scrapping Ducks

The Parent-Teacher Association nets a net of \$136.82 from the various booths of the carnival which was held on the night of October 31.

Despite the unsettled weather, in a sense added to the Halloween spirit, a large crowd attended the affair.

At five thirty, a parade was organized at the city hall by Miss Nettie and led through the main street of Rockdale by Silver Jean, who won first prize in the costume contest. Dorothy Buchanan and

against 26-6. Par-thers come with. Here is gone but Box remains. The row, an outstanding linesman, returns.

## REHEARSALS NOW IN PROGRESS FOR PLAY "MAMA'S BABY BOY"

Rehearsals are now in progress for a play, "Mama's Baby Boy," to be given on Friday, November 28.

DATE OF PRESENTATION SET FOR NOVEMBER 28; MISS ELLOIE BARKLEY WILL DIRECT

Under the clever leadership of Gra-

Tentative plans for the annual of the Centennial motif through the book Her Majesty Queen, Jane of the House of Gunn, crowned Queen of the Realm of the State of Texas. The progress of the State of Texas. The progress of the State of Texas.

## PHOTOGRAPHER CAMERON BEYER ON ANNUAL

Charles Brady, photographer of the B and B Studio in Cameron, is making pictures of the annual.

Charles Brady, photographer of the B and B Studio in Cameron, is making pictures of the annual.

Charles Brady, photographer of the B and B Studio in Cameron, is making pictures of the annual.

Charles Brady, photographer of the B and B Studio in Cameron, is making pictures of the annual.

Charles Brady, photographer of the B and B Studio in Cameron, is making pictures of the annual.

Charles Brady, photographer of the B and B Studio in Cameron, is making pictures of the annual.

Charles Brady, photographer of the B and B Studio in Cameron, is making pictures of the annual.

## PRIMARY NEWS

The Circus is Coming

Under the supervision of Mrs. S. C. Graves, the first grade students are preparing to produce short plays. In connection with this work, the students are drawing and coloring balloons.

In connection with the new contract method, the first grade work is being changed. The students are also starting an English room with a model room. The students are also starting an English room with a model room.

The tenth grade composition instructor, Miss Ruth, is having the students write themes. The students are also starting an English room with a model room. The students are also starting an English room with a model room.

The sophomore composition instructor, Miss Ruth, is having the students write themes. The students are also starting an English room with a model room. The students are also starting an English room with a model room.

The sophomore composition instructor, Miss Ruth, is having the students write themes. The students are also starting an English room with a model room. The students are also starting an English room with a model room.

## CAMPUS CHATTER

The enrollment of the school has increased. The students are also starting an English room with a model room. The students are also starting an English room with a model room.

The enrollment of the school has increased. The students are also starting an English room with a model room. The students are also starting an English room with a model room.

The enrollment of the school has increased. The students are also starting an English room with a model room. The students are also starting an English room with a model room.

The enrollment of the school has increased. The students are also starting an English room with a model room. The students are also starting an English room with a model room.

The enrollment of the school has increased. The students are also starting an English room with a model room. The students are also starting an English room with a model room.

## JANE GUNN CROWNED QUEEN AT CORONATION BY LORD MAYOR CAMP

Magnificent Court Room and Rainbow Colors Help Make Coronation Hugh Success

Her Majesty Queen, Jane of the House of Gunn, crowned Queen of the Realm of the State of Texas. The progress of the State of Texas. The progress of the State of Texas.

Her Majesty Queen, Jane of the House of Gunn, crowned Queen of the Realm of the State of Texas. The progress of the State of Texas. The progress of the State of Texas.

Her Majesty Queen, Jane of the House of Gunn, crowned Queen of the Realm of the State of Texas. The progress of the State of Texas. The progress of the State of Texas.

Her Majesty Queen, Jane of the House of Gunn, crowned Queen of the Realm of the State of Texas. The progress of the State of Texas. The progress of the State of Texas.

Her Majesty Queen, Jane of the House of Gunn, crowned Queen of the Realm of the State of Texas. The progress of the State of Texas. The progress of the State of Texas.

Her Majesty Queen, Jane of the House of Gunn, crowned Queen of the Realm of the State of Texas. The progress of the State of Texas. The progress of the State of Texas.

Her Majesty Queen, Jane of the House of Gunn, crowned Queen of the Realm of the State of Texas. The progress of the State of Texas. The progress of the State of Texas.

Her Majesty Queen, Jane of the House of Gunn, crowned Queen of the Realm of the State of Texas. The progress of the State of Texas. The progress of the State of Texas.

Her Majesty Queen, Jane of the House of Gunn, crowned Queen of the Realm of the State of Texas. The progress of the State of Texas. The progress of the State of Texas.

Her Majesty Queen, Jane of the House of Gunn, crowned Queen of the Realm of the State of Texas. The progress of the State of Texas. The progress of the State of Texas.



VIRGINIA HALE  
Editor-in-Chief



MRS. HUBERT DENNIS  
Spencer



TOMMY COFFIELD  
Business Mgr.

# Annual Staff



JANE GUNN-Associate Editor



BILLIE NELSON-Associate Ed.



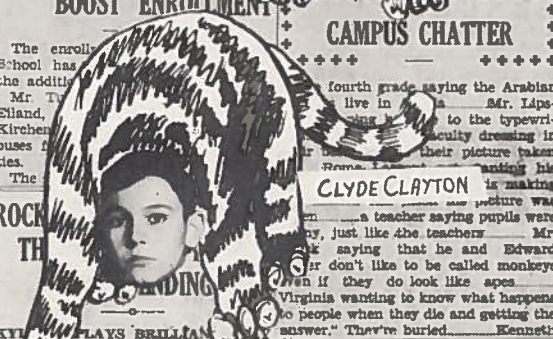
NANETTE ROUNTREE-Asso. Bus. Mgr.



GRAHAM KYLE-Design Editor



DOROTHY WILLIAMS-Art Editor





MARGARET CURRY  
Asso. Photo. Editor



CARRIE LOUISE FRANKLIN  
Photo. Ed.



DORIS McCAWLEY  
Senior Ed.



JO MURPHREE  
Ads and Humor Editor



EVELYN GUNN  
Snapshot Editor



ANNE SEIBERT  
Junior Editor



IOLA CHRISTIAN  
Sophomore Editor



RUTH SIMMS  
Freshman Editor



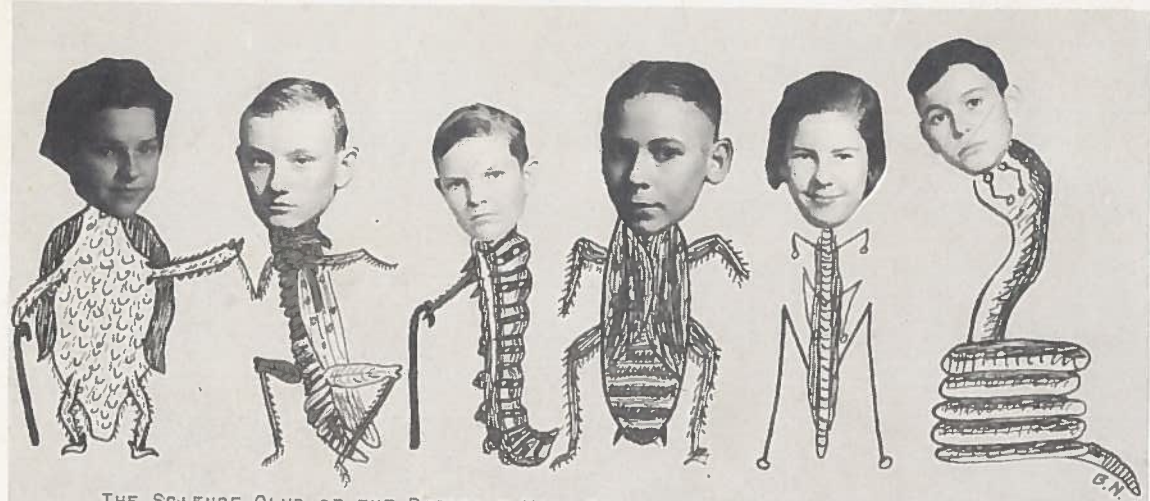
Maxwell—F. Graves—M. Graves—Miles—S. Miles—Dennis—Gry—Gunn—  
Skinner—Bradley—Kornegay—Moody—Newton—Fulohart—Williams—Gibson—  
Quinland—Backhaus—Feisler—Fulohart—Gunn—Weed—Turner—Simms—Maxwell—  
Swafford—Birdwell—Sessions.

# P.T.A.

WITH AN ATTENDANCE OF MORE THAN FIFTY, INCLUDING EVERY MEMBER OF THE ROCKDALE PUBLIC SCHOOL FACULTY, AND SOME OF THE MOST CIVIC-MINDED WOMEN OF THE CITY, THE ROCKDALE PARENT-TEACHER ASSOCIATION WAS ORGANIZED AT THE HIGH SCHOOL BUILDING ON FRIDAY, SEPTEMBER 21, 1934.

IN THE SHORT COURSE OF ITS EXISTENCE, THE P. T. A. HAS SPONSORED A NUMBER OF CONSTRUCTIVE FEATURES IN CONNECTION WITH THE SCHOOL, INCLUDING A STREET CARNIVAL ON HALLOWE'EN EACH YEAR, AND A SCHOOL CAFETERIA. THE CAFETERIA WAS STARTED WITH THE SOLE PURPOSE OF FEEDING THE UNDERPRIVILEGED CHILDREN OF OUR SCHOOL.

THE QUESTION OF CHILD WELFARE IS THE ONLY ONE ON WHICH THE ENTIRE WORLD IS UNITED, AND THE PARENT-TEACHER ORGANIZATION IS THE MEDIUM OF CO-OPERATION BETWEEN PARENT AND TEACHER FOR THE WELFARE OF THE CHILD.



THE SCIENCE CLUB OF THE ROCKDALE HIGH SCHOOL WAS ORGANIZED BY MEMBERS OF THE GENERAL SCIENCE CLASS, FOR THE PURPOSE OF FURTHERING THEIR INTERESTS IN SCIENCE AND THINGS SCIENTIFIC BEYOND THE SCOPE OF THE CLASS ROOM.

THE ORGANIZATION CONSISTS OF BOTH BOYS AND GIRLS WHO WISH TO CARRY ON VARIOUS ACTIVITIES SUGGESTED BY THE MEMBERS THEMSELVES. EACH MEMBER ALSO ENDEAVORS TO SECURE AS MANY POINTS AS HE CAN BY WORKING ON CERTAIN PROJECTS AND ACTIVITIES, FOR WHICH HE IS DULY RECOGNIZED.

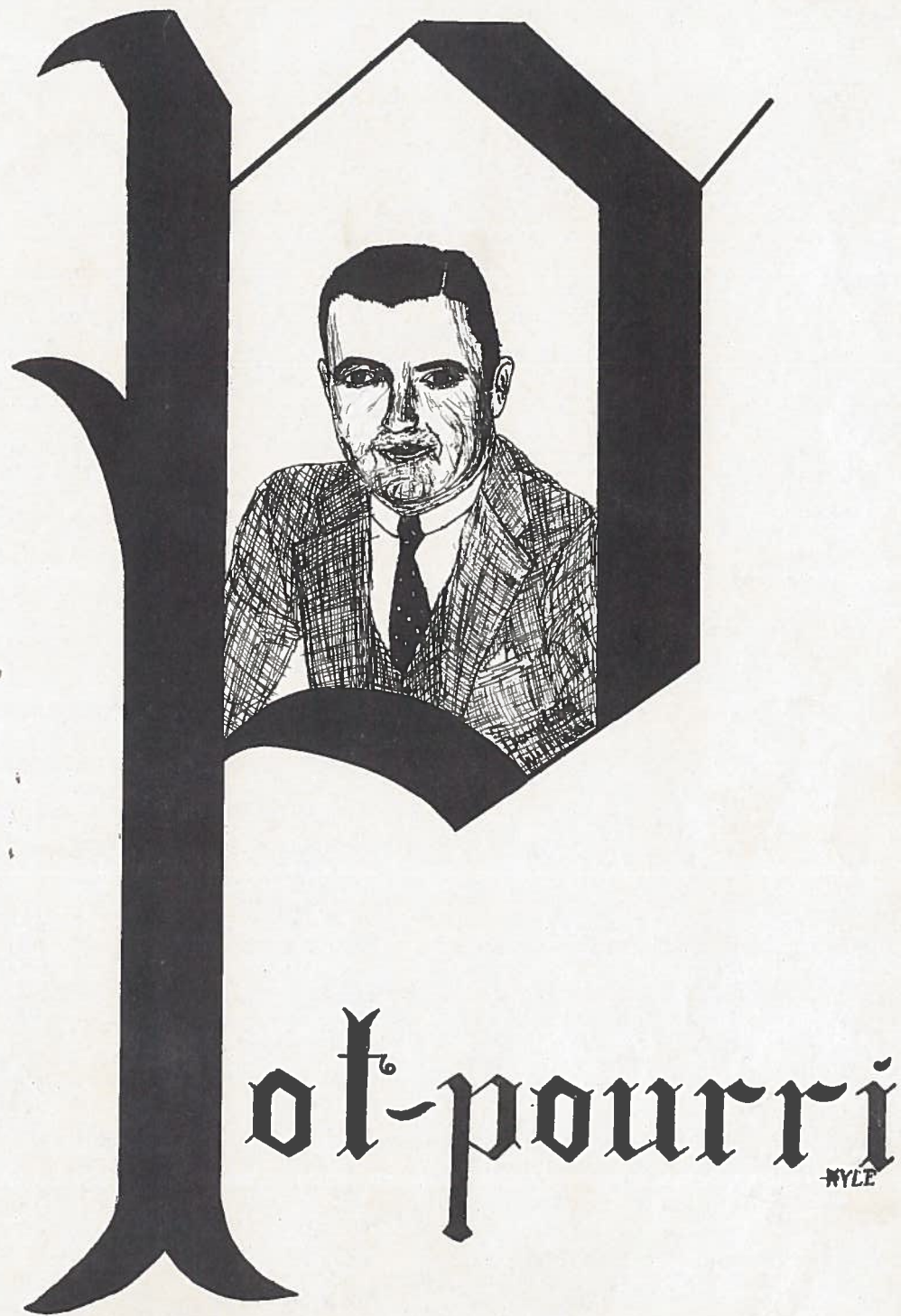
THE CLUB CARRIES OUT VARIOUS SOCIAL ACTIVITIES, AND ENJOYS THE GOOD FELLOWSHIP OF EACH OTHER.

# Science Club

Kyle



LIPSCOMB—INSTRUCTOR  
 DONNA, MOODY, MASON, COLVIN, PHILLIPS, STEIN, MENN, CURLEE, R. SMITH, HAIRSTON, RAGAN, S. WILLIAMS, H. SMITH, DYER, MORELAND, WINKLER, NEAL, BRYANT, PUGH, SWAFFORD, BEXLEY, HORTON, LARGENT, BAXTER, EADS, BOSWELL, KORNEGAY, BOUNDS, BRADLEY, FRANKLIN, L. WILLIAMS,



Hot-pourri

KYLE

# Seventh Grade



CLASS PICTURE

CLASS POEM—"MY CREED"—H.A. WALTERS

CLASS FLOWERS—"SWEET PEA"

CLASS COLOR—RED AND BLUE

Elton Abernathy  
 Ruby Ashby  
 Robert Buniva  
 Wilson Brannen  
 Louise Black  
 Dorothy Brahm  
 Evangeline Barnhouse  
 Yvonne Bounds  
 Charles Christian  
 Thebert Crittendon  
 Anna LaVerne Caudle  
 Bessie Mae Clymore  
 Agnes Darden  
 Alice Drummond  
 Millian Dyer

Eva Dall Edmonds  
 Calvert Gibson  
 Leroy Givson  
 Margie Nell George  
 Ruby Lee Hirt  
 Homer Jones  
 Joe Jacobs  
 Eldon Kornegey  
 Avon Lucas  
 Ray Leech  
 Marie Lewis  
 Lorene Lanford  
 Mildred Lee  
 Idelle Leper

C. E. Moses  
 Irvin Maston  
 May Dell McGuire  
 Inez Neal  
 Thelma Noack  
 Juanita Offield  
 Harold Pruett  
 Kenneth Pugh  
 Bill Seibert  
 Bobbie Smith  
 John Suarez  
 Wallie Mae Stork  
 W. E. White  
 Christine Watson  
 Agnes Wilder  
 Barbara Williams

MOTTO: "PRACTICE MAKES PERFECT"



Robert (Pres.)



The I m a - Bessie Mae - Margie - Wallie



Three "Tuff Guys"

# Sixth Grade



McGOWN—ENGLISH—DIVER—DENNIS—NEWTON—NICHOLS—SWEAKS  
 CHADDOCK—HOLLIDAY—FARRIS—BAGGERLEY—DOSS—BOUNDS  
 DAVIS—BRYANT—BLACKMON—DOCKALL—BACKHAUS—LANDIS  
 MASON—JAMES—GIBSON—ALLEN—MEEK—HENRY—ADDINGTON  
 WINKLER—BAKER—BLACK—SIDES—QUINLAN—CASS—DAVENPORT  
 NOACK—FIESLER—SPENCE—DANIELS—HALE



Natha Lee Henery



Six Little "Reprobates"



Hale and Girsion



Playing Ladies

# Fifth Grade



FYATT--LOPER--BRANNON--GOHMAN--GARCIA--E. RYAN--BACKHAUS--NEWTON  
 WILLIAMS--KIRCHENWITZ--DIVER--SIMMONS--CAUDLE--WILDER--SKINNER  
 BROWN--HARMES--WEED--STORK--MASON--MAXWELL--STEWART--JUSTICE  
 BLACK--GEST--MARRS--CRONE--BUELL--BAXTER--TUMA--LANFORD  
 FRUETT--FLOYD--DARDEH--KIRK--NEAL--GEBBART--P. RYAN--WALLIS  
 GARY



Lillian and Carter



Girl Scouts  
Troop 1-2



Class Officers

# Fourth Grade



SMILEY--STANISLAW--LYNCH--JENKINS--WILLIAMS--BACKHAUS--WHIPPLE  
 BOUNDS--HAIRSTON--SPENCE--ELAND--DESSENS--CASTONEDA--JUSTICE--  
 HAEBIG--HOLDER--JAMES--WELCH--HARRIS--FERGUSON--BALHORN  
 KORNGAY--SKINNER--SCROGGHNS--JACKSON--ENGLISH--VOYLES  
 KIRK--FARRIS--SEIBERT--COLVIN--WHIPPLE--HEISCH



Kids, Just Kids!



"Future Class Cutters"???



Ruth Kirk



# Third Grade



GARCIA--SUAREZ--MENDOZA--NICHOLS--VON GONTEN--RAYMOND--MUSTON--TALBOT  
 BROWN--LAVVORN--PENA--BAGGERLY--OFFIELD--QUINLAN--BOWNS--HORTON--HUGGINS  
 STANISLAW--GIBSON--GUNN--MOODY--BLACKMON--BLACK--ANDERSON--SEELKE  
 DANIALS--WILDER--FIESELER--MIDDLETON--ALLEN--BRANNON--MASON--LYNCH  
 WILDMAN--POMPLIN--SKINNER--HORTON--LEECH--HOOPER--ABERNATHY



RONALD



JOHN PINK



Miss Gunn



NETTA FAYE



JACQUILINE



OLA JOYCE



MARTHR LEE



DORIS

HIGHLIGHTS "TROUBLE-TOYLAND"

# Second Grade



FERRARI--MAPE--CLAMPET--HAIRSTON--SHIVELEY--HOLDER--BOUNDS--HARTLET  
 COFFIELD--CHADDOCK--BRUMBELOW--STALLWORTH--GARCIA--H. BLAND--MCGUYER  
 GRABEL--GIBSON--DAVENPORT--CASTALEDA--KORNEGAY--BLAFD--PERRY--SKINNER  
 STEWART--STONE--THOMPSON--WILLIAMS--J.M.S.--GARY--HAIRSTON--HORTON--ESTELL  
 JACKSON



Petie and Patty



"Sliders"

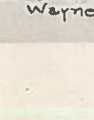


Eugene - Anna - Ross - Doris - James

# First and Second Grade



SESSIONS--KIRK--PENA--BRAHM--BLACKMAN--BRUMBELOW--STEIN--FLOYD--BADS  
SUAREZ--BELTO--LUCAS--WELCH--CHADDOCK--WOODS--ANDERSON--ADDINGTON  
TUMA



Slide, Boys, Slide!



Do the same, Girls!



# First Grade



S. MILES--JUSTICE--HOLDER--LANFORD--M. S. SMITH--COHMAN--SCHOWE--KEELING  
CRONE--MILES--DAHLSTEDT--SHIVLEY--RICHARDS--LAVORN--HOOD--MABE--STALLWORTH  
SIMAS--D. ALLEN--MUNDINE--ALFORD--J. SMITH--LEECH--BELTO--J. ALLEN--FARRIS  
MIDDLETON



Betty Jo Clifford



PICNIC DAY (ROOM MOTHER MRS ROY TYSON)



FUTURE TIGERS



1. Two of a Kind.
2. Adolph's Big Moment.
3. "Uncle Tom"
4. Arthur and his Chevy.
5. Supt. and his Ford.
6. Anne and La Verne.
7. "Virgie" and "Queenie."
8. The Long and Short of it.
9. Betty Jean.
10. "Song Bird" Allen.



# MAMA'S BABY BOY

"Senior Play"

"MAMA'S BABY BOY", A THREE ACT COMEDY, WAS PRESENTED BY THE SENIOR CLASS OF 1936 UNDER THE DIRECTION OF ALICE ELLOIE BARKLEY, A GRADUATE OF SOUTHERN METHODIST UNIVERSITY. PROCEEDS FROM THE PLAY WERE USED IN FINANCING THE ANNUAL.

THE PLOT CONCERNED THE ATTEMPTS OF AN ATTRACTIVE WIDOW TO SECURE A WEALTHY HUSBAND AND THE HUMOROUS COMPLICATIONS THAT AROSE.

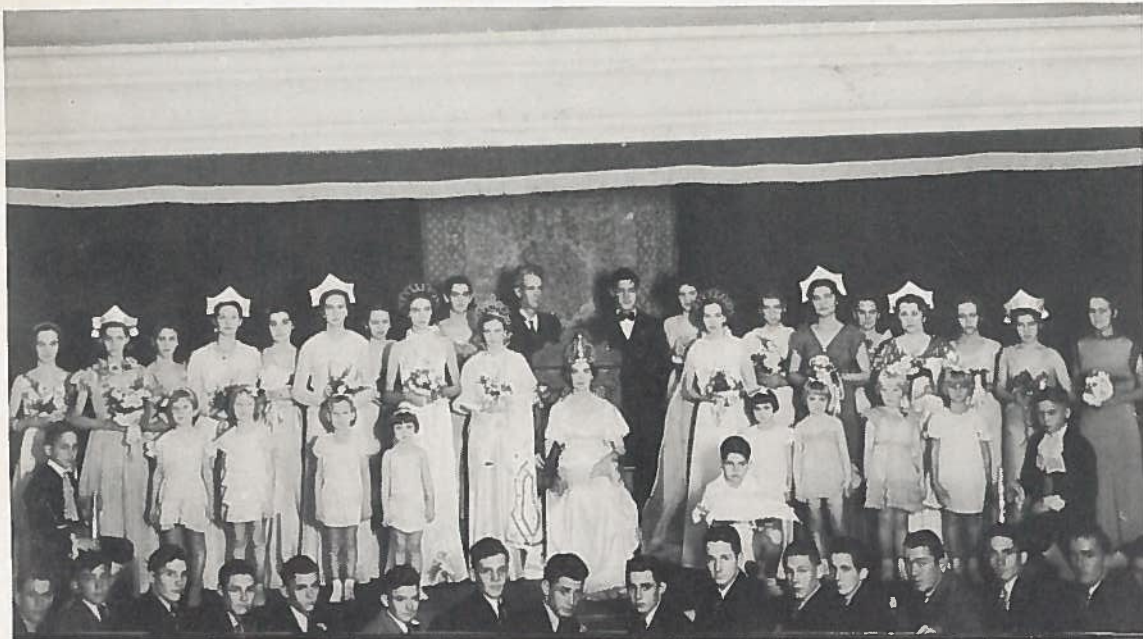
THE PERFORMANCE OF THE CAST RECEIVED HIGH PRESS COMMENTS AND THE PLAY WAS ACCLAIMED QUITE A SUCCESS.

### THE CAST

Mrs. Anna McLean.....	NANNETTE ROUNTREE
Mr. Luther Long.....	BILLY NELSON
Shepard McLean.....	BILL PUGH
Julia Long.....	JO MURPHREE
Mrs. Anglin.....	VIRGINIA HALE
Mrs. Matilda Blackburn.....	MARY LOUISE LEE
Minnie, the Maid.....	DOROTHY WILLIAMS
Sylvia Kline.....	ANN SEIBERT
Cynthia Anglin.....	DORIS MCCAWLEY
Max Moore.....	W. T. PEARSON



ALICE ELLOIE BARKLEY  
Director



# CORONATION

OF  
 HER MAJESTY THE QUEEN, JANE OF THE HOUSE OF GURN  
 SIR GRAHAM KYLE, FOOTBALL HERO  
 HIS LORDSHIP MAYOR CAMP

Crown Princess Ruth Simms  
 Princess Jessie Mae Ferguson  
 Princess Marguerite Whites  
 Duchess Gertrude Crump  
 Duchess Doris McCawley  
 Duchess Nannette Rountree  
 Duchess Jo Murphree  
 Duchess Celeste Swafford  
 Duchess Nancy Smith

Lady La Verne Renfro  
 Lady Eugenia Wolf  
 Lady Ann Seibert  
 Lady Josephine Deekall  
 Lady Dorothy Pruett  
 Lady Lavon Hyde  
 Lady Mary Sid Allen  
 Lady Betty Jean Gibson  
 Lady Eleanor Howell  
 Lady Mary Curlee

Trumpeter John T. Hale

Trumpeter Robert Bimlva  
 Crown Bearer Charles Henry Coffield

Train Bearers  
 Peggy Ruth Middleton  
 Dorothy Mundine  
 Jacqueline Allen  
 Velma Farris

Train Bearers  
 Mary Jean Behrens  
 Mary Sue Smith  
 Louise Richards  
 Betty Jo Lenford

### Members of the Realm of Football

Roma Largent, Harvey Dean, Johnny Weed, Malcolm Gee, Arthur Pederson, Vaughn McGuyer, Frank Dymke, Weldon Kyle, Harris Healey, Vernon McGuyer, Tommy Coffield, Luther Landis, Byron Earl Fitzgerald, Boyd Middleton, Jack Ferguson, Alvin Curry, Clyde Smith.



1. "Soda Jerker" Kyle
2. Childhood Days
3. Is It Good, Jessie?
4. Dorothy, Hazel, & Sally
5. A Foursome !!!
6. "Hoot" Playing Indian
7. Alvin, Fliver, & Friends
8. "Camera Shy" Dean
9. Roger, Celeste, & Buster
10. "Virgie" and "Queenie"



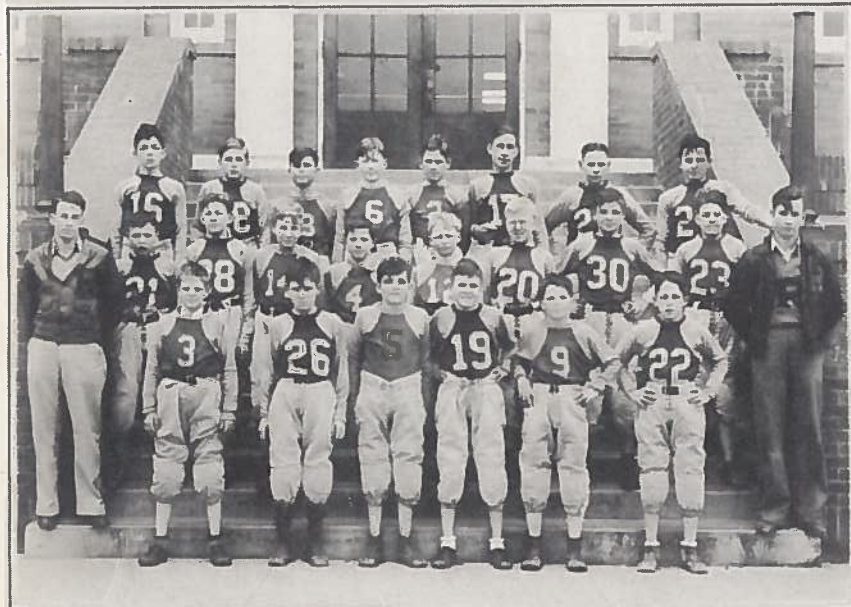
The "Gunn Gals"



"Dot" "Peach"



Sunbonnet "Hoot"



THE JUNIOR FOOTBALL TEAM OF 1935  
WEED, GIBSON, HORTON, CHRISTIAN, MOODY, WHITE, MENN, MOSES  
DEAN-(COACH), BUNIVA, LANDIS, LUCAS, B. SMITH, ABERNATHY,  
BACKHAUS, BOUNDS, BARTLETT, LARGENT-(COACH)  
BLACK, SIDES, BLACKMON, PUGH, KORNEGAY, SEIBERT.



Joseph



Mrs. Hoot, Cy, Virgie



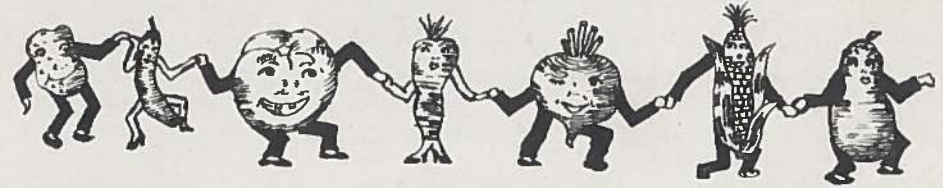
"Cherrie"



Pine's  
HALL



THREE Popular "Sophs"



Baseball



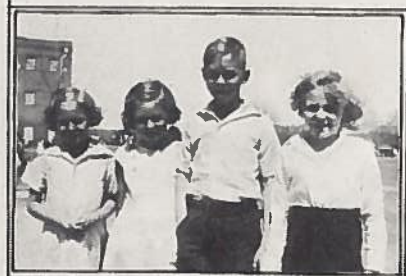
Donald and Donnie



John Pink, Jr.



Ruby



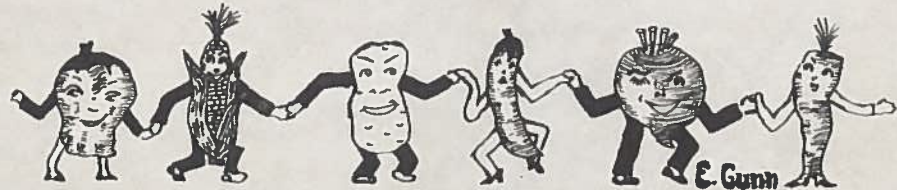
Ola Joyce George Neal  
Jacqueline Nella Faye



Jimmy



Shirley, Thelma, Peggy



E. Gunn



Such Affection!



"Big Shots"



Little "Farmers"

CHEVROLET



Doin' Swell, Elton!



Eleanor + Iola

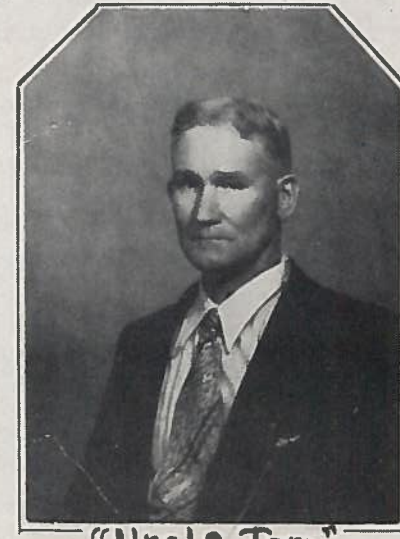


Some Fun! Eh, Annie Mae?

Ford



Hikers



"Uncle Tom"



Billy K.



Elloie, Bess, Fred, Kay, Bertha, Martha, Louise, Earle, J.O.



Dorothy W.

# OUR BABY DAYS



"Virgie"



Jo



Tommy



Nanette AND Ruth



Margaret



Tommy & Nanette



Jane & Evelyn



Virginia, Nanette, Dorothy, Jo, & John T.



**1936 LEAGUE MEET  
WON BY ROCKDALE  
WITH LARGE SCORE**

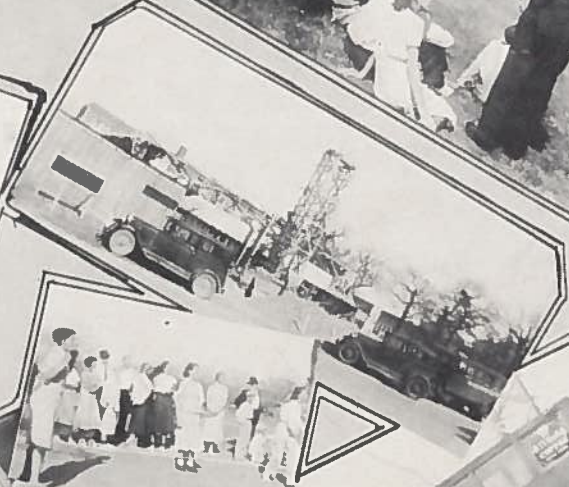
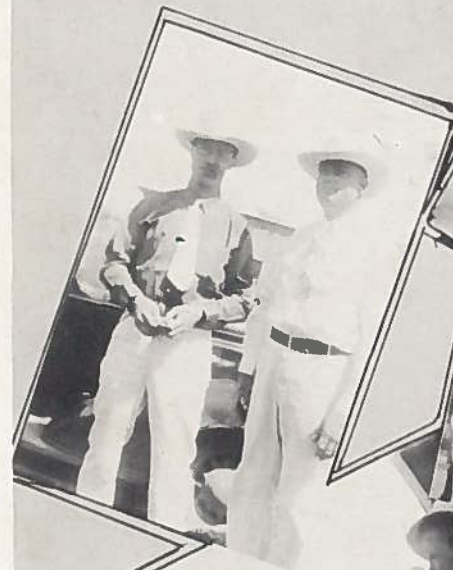
ROCKDALE WINS 9 FIRST PLACES  
AND EIGHT INDIVIDUAL  
AWARDS RECEIVED

Rockdale is the Class A winner of  
the interscholastic League Meet with a  
total of 229 1/2 points; 102 in the high  
school division and 127 1/2 in the ward  
school division, according to records  
from Superintendent S. C. Miller. Only  
Cameron took second place in the meet  
with a total of 190 points, 104 1/2.



Jessie James  
(Rep.)

# SCENES AT THE COUNTY MEET



Williams' & Murphree



"Dink" & "Gertie"



"Mary Alice"



"Harmon" and "Mac"

NEVER  
AGAIN!



"Eleanor"



"Scorita"

"Vaughn"



"Rangerette"



Pore Lil' Orphan



"Friends Forever"



"Sap"



"Three Of A Kind"



"Sissy"-Tutt Guy-"Sissy"



Alec McLeod  
Futius Graves  
Floyd Griffiths



Gladys Matson



Rueben Seelke



Dorothy Matson

# POPULAR

# EX-GRADS



Fenora Meyer



Marshall Floyd  
Gaylon McCoy



Ella Frances Wolf



Doris Simms



Flora Scheining



Virginabee - Helen



"Little Cowboys"



Dorothy - Nancy



Home Ec. Picnic -



Mary Elizabeth - Julia Verne -  
Nathalee - Mary Florence



Eleanor



"Hoot"



Mary - Natha Lee



Celeste - Ruth -  
Virginia - Eleanor



"Farmer"



"Prof"



"Buster"



# READY MADE

# AUTOGRAPHS

DEAR  
Honeybunch I'll  
always be yours

DEAR  
Always at  
your service

Dearest  
Your loving  
Tootsie Roll

Dear  
Come up and  
see me some night  
Love,

--- dear,  
yours forever  
With all my love,

Dear  
Be no bodys  
darlin' but mine,  
love U,

Sweetheart darlin',  
Please believe me,  
I love you,

--- Angel,  
I'm lost  
without you,  
your sweetie,

Dear  
Baby you're  
The only one for me,  
your,

Dear  
you've got my  
heart going 'round  
and 'round,

Always yours,

--- Honey  
I'm yours  
Forever,  
yours,

my dear  
I'm bettin' all  
I've got on you -  
Affectionately yours,

Hi TOOTS,

A Bank's chief assets are proven character and integrity... known strength and stability... unusual service facilities with a friendly, helpful application of them to each customer's needs. It is an abundance of these assets which qualifies our bank to serve the financial and commercial interests of this community.

The  
Rockdale State Bank  
ROCKDALE, TEXAS  
MEMBER FEDERAL DEPOSIT INSURANCE CORPORATION

**SCARBROUGH & HICKS**  
 Rockdale, Texas  
  
**DRY GOODS - GROCERIES**

**H.O. QUEBE**

DRUGGIST

Rockdale, TEXAS.

DRUGS & MEDICINES

PRESCRIPTIONS

TOILET & RUBBER GOODS

We Guarantee

PERSONAL ATTENTION TO PRESCRIPTIONS - ONLY PUREST DRUGS USED  
 LOWEST PRICES, QUALITY CONSIDERED

**JACK'S**

**TAILOR SHOP**

• CLEANING

• PRESSING

• ALTERATIONS  
 PHO-205

**PERRY'S RADIO SHOP**

EXPERT REPAIR WORK

TUBES • TESTED PARTS

PHONE 8

**PHILLIPS AND LUCKEY**

AMBULANCE SERVICE

NITE PHO. 94,112,88 — DAY PHONE 54

**FLORA**

**DORA**

**SHOP**

LADIES DRESSES + HATS

MRS. H.G. MURPHY

**THE ROCKDALE**

**BAKERY**

HOME OF GOOD

BREAD, CAKES, + PASTRIES

The **Rockdale Reporter**

"THE STUDENT BODY'S BEST FRIEND"

ORIGINATOR & SPONSOR OF "TIGER TALES"

Our congratulations to the Staff on overcoming many obstacles in the production of this splendid book. We have been glad to co-operate.

# PEARSON'S SHOP

TERMS & PRICES TO SUIT PURCHASER

SINGER SEWING MACHINES

EXPERT SHOE REPAIR

RADIOS; PHONE 26

BEST MATERIALS; LOWEST COST

## MAXIES

Swiff Shop

HEADQUARTERS

FOR ALL

Hi SCHOOL ATHLETICS!!

JOHN

## McConry's

SHOE

SHOP

HIGHEST QUALITY SHOE REBUILDING

## B. Regenbrecht,

OPTOMETRIST

TEXAS  
CERTIFICATE  
NO. 160

CALIFORNIA  
--- CERTIFICATE  
NO. 1191

ROCKDALE, TEX.



## ROCKDALE BOTTLING WKS.

HOME OF  
ROCKDALE SODA WATER  
& SINCLAIR PRODUCTS.

TRADE AT

# Stricker's

BERKSHIRE HOSE — KITCHENWARE — POTS & PANS  
CANDY — POCKET KNIVES — UNDERWEAR — DISHES  
FACE POWDER, ROUGE, ETC. — SHAVING NEEDS.



THE ONLY  
*complete*

LOW-PRICED  
CAR /

## LOUIS G. GEST

ROCKDALE, TEX.

McGuyer's Certified  
Service

Mobiloil — Mobilgas

MOBIL  
LUBRICATION

Phone 35

## E. P. HIENIKIE

"POPULAR PRICED MDSE.  
FOR CASH"

DRY GOODS - SHOES - MEN'S AND  
WOMEN'S WEARING APPAREL

## JOHN T. HALE

ROCKDALE, TEXAS.

### INSURANCE

AUTOMOBILE  
FIRE

1919

CASUALTY

STORM

1936

"Not a centennial  
but long enough to

know INSURANCE!"

BEST WISHES TO ROCKDALE

HIGH SCHOOL, ITS FACULTY  
AND STUDENTS



"AT THE FOOT OF A RAINBOW"

# RAINBOW COTTAGES

ROCKDALE, TEXAS.

TOURISTS WELCOME - ALL MODERN  
RADIOS, HOT & COLD RUNNING WATER,  
AND SEALEY MATTERESSES

SENIORS

We Congratulate You

# WM. CAMERON & CO., INC.,

E.M. NELSON, Mgr. ——— KENNETH STEVENS, Asst.  
GOLD MEDAL WALLPAPER-MINNESOTA PAINTS.

# E.M. PEEBLES AND SONS

HARDWARE — FURNITURE — ENAMELWARE  
GLASSWARE — CROCKERYWARE  
PHONE 55

# J.F. COFFIELD

HARDWARE AND FURNITURE

"I Sell For Cash - I Sell For Less"

EVERGREENS

ROSES — SHRUBS

SEND FOR CATALOGUE

## TEXAS ROSE GARDEN

A.C. Franklyn,

Rockdale, Texas.

## The Fairmont Creamery Co.,

CASH BUYERS OF

CREAM-EGGS-POULTRY

We Sell BABY CHICKS

and POULTRY FEED

PHO. 123

# BALDRIGE

and

# PREWITT



DRUGGISTS



# COMPLIMENTS

of

## John Buniva

## Coal

# COMPANY

# BACKHAUS BROS.

## I.G.A STORE

"The HIGHEST QUALITY FOOD FOR LOWEST PRICE"

## SINCLAIR

## SERVICE STATION

Index

## LUBRICATION

CURRY & FLOYD

SEE

## TIMMERMAN'S garage

FOR

WRECKER SERVICE

REPAIR WORK & PARTS

GAS AND OIL

WE WANT YOUR ACETYLENE JOBS

ROCKDALE

# JIM AND FRED LEADS

GENTS FURNISHINGS  
"Its The Store For Men"

## TURNER LBR. Co.

EVERYTHING TO BUILD ANYTHING

Repair, Paint thru  
our plan of small  
monthly payments  
for both material and  
labor.

PHONE 120.

ALL MODERN EQUIPMENT  
+ SHEEN GLO + 12 YEARS  
EXPERIENCE = A SUIT OR  
DRESS CLEAN + PRESSED  
ODORLESS IN 30 MINUTES  
SUITS REMODELED, DYING, HATS BLOCKED

Star Cleaners  
PHO. 121 J.B. OLDHAM

Browning's Gulf  
STATION  
MODERN WASHING  
& GREASING - RELIABLE  
BATTERIES - GATES / TIRES



Gaither MOTOR  
COMPANY

Sales-Service  
W.E. GAITHER, DISTRIBUTOR  
TEXACO PRODUCTS

Telephone  
86

DRINK  
**Coca-Cola**

IN BOTTLES



PAUSE-TIME

DELICIOUS AND REFRESHING

CAMERON BOTTLING  
CAMERON, WKS. TEXAS.

Lowenstein's

DRY GOODS--READY TO WEAR

• IN BUSINESS 62 YEARS •



Our Congratulations To

"The Senior Class of '38"

# DIXIE Theater

"WHERE ROCKDALE IS ENTERTAINED"

Congratulations, Seniors!

# NOACK GROCERY COMPANY

GROCERIES - MEATS - FEEDS

We Buy Cattle, Hogs, + Produce

COMPLIMENTS  
of  
**BORDER STATE GROCERY CO.,**  
ROCKDALE, TEXAS.

COMPLIMENTS  
of  
**C.E. Ward & Co.**  
CAPS ●  
● GOWNS

*Compliments*  
of  
**H.H. COFFIELD**

~~~~~

ALL PHOTAGRAPHIC WORK IN THIS BOOK  
BY  
**B+B STUDIOS**  
CAMERON, TEX.

**HOUPT SERVICE STA.,**  
CERTIFIED MOBIL LUBRICATION  
MOBILDIL — MOBILGAS

**E.L. HENNING**  
**SERVICE STATION**  
CERTIFIED SERVICE  
MAGNOLIA PRODUCTS

**HORTON'S FILLING STA.**  
EAST TEXAS GAS  
MANAGER BUSTER BRUMBLOW

**B. ASHBY**  
MINERVA PETROLEUM PRODUCTS  
SERVING YOU 13 YRS.

**J. APPLEMAN**  
DRY GOODS, SHOES AND  
READY-TO-WEAR

**HARRIS BROS.**  
TRANSFER AND ICE

Compliments  
of  
**HARRY HAMILTON**

PATRONIZE  
OUR  
ADVERTISERS

**TOWERY'S GARAGE**  
GENERAL REPAIR-PAINTING  
MAGNOLIA PRODUCTS  
LEON C. TOWERY, PROP.

**J. BRANCH LEWIS**  
CITY SECRETARY  
TAX ASSESSOR & COLLECTOR  
Rockdale, Texas.

**ROCKDALE MACHINE SHOP**  
Machine Work AND ELECTRIC  
ACETYLENE WELDING

**ROCKDALE PLBG. & SHEET**  
METAL WKS.  
FLOYD COOK + F.W. VINTON

COMPLIMENTS  
of  
**Burgess Battery Co.**

**ED. GUNN**  
ATTORNEY-AT-LAW

**H.G. PERRY**  
GENERAL INSURANCE  
Rockdale, Texas.

AD SECTION  
LAID OUT & PRINTED  
BY  
E. J. NELSON

AUTOGRAPHS

THE LAIR

1936



RESERVED