

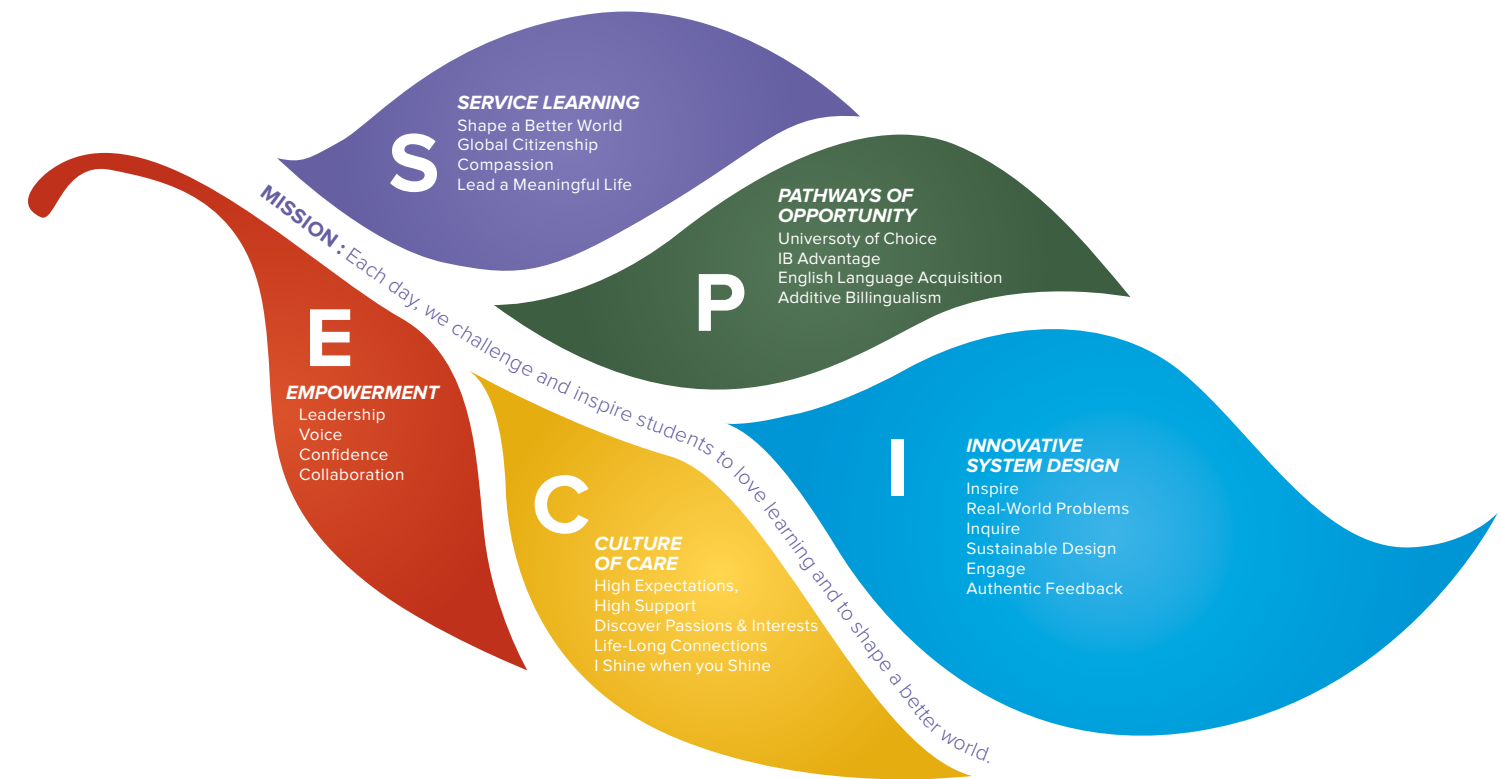
# Branksome Hall Asia

## At a Glance

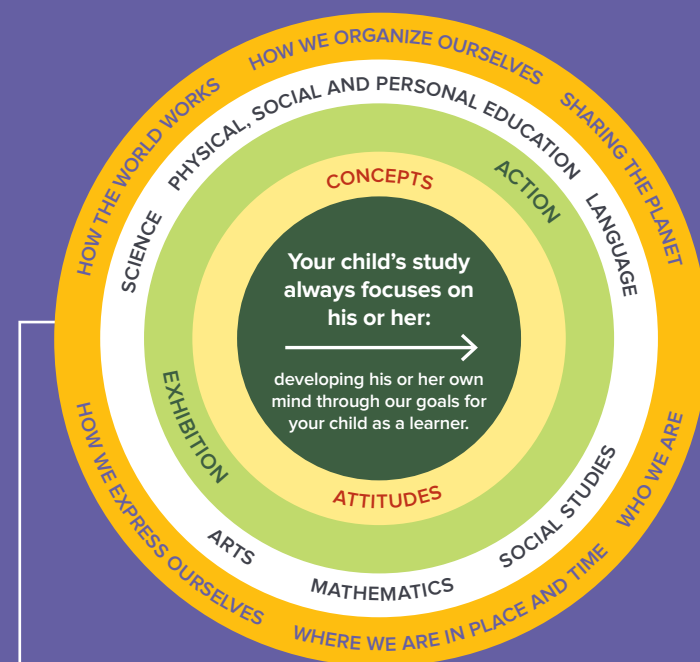


# Branksome Hall Asia is...

- The only IB World School in Jeju offering three IB programs
- Coeducational in Junior School
- Single sex environment starting in Grade 6
- Offering a full boarding program starting Grade 5
- Encouraging students to find solution together and calibrate the answers through collaboration
- Focused on identifying and solving real-life problems
- Fostering future leaders that shape a better world

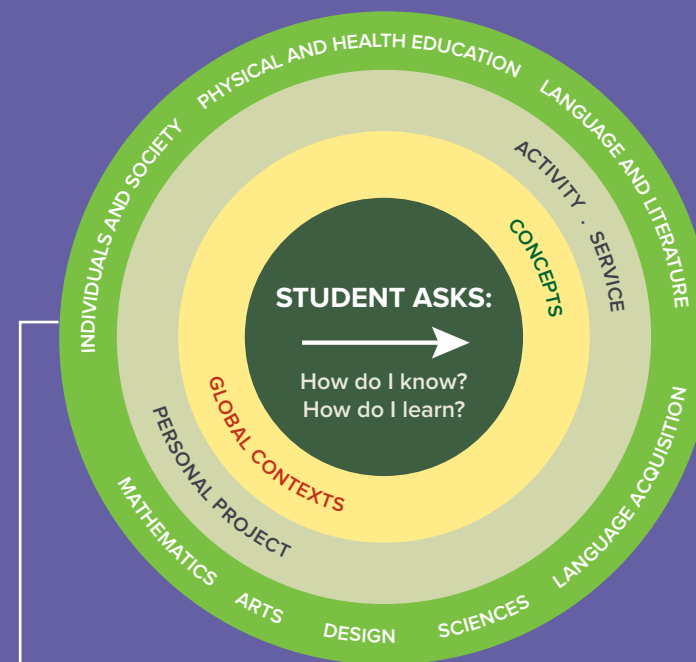


## PRIMARY YEARS PROGRAM



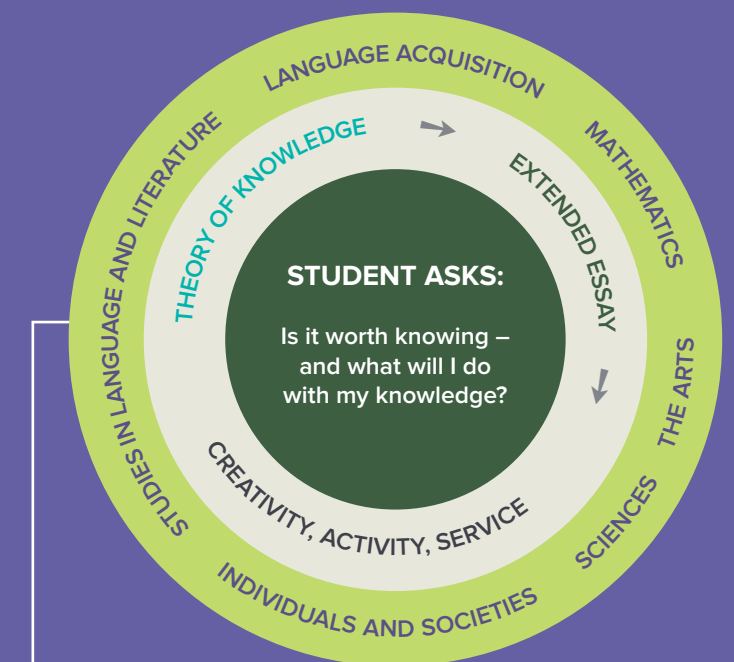
- Inquiry based learning
- Foundation for curiosity
- Learn to think, think to learn

## MIDDLE YEARS PROGRAM



- Global context
- Connecting the dots between diverse concepts
- Creating insight

## DIPLOMA PROGRAM



- Demonstrate knowledge
- University level research and writing
- Excellent results for future pathway

# Branksome Hall Asia by Numbers

1,000

NUMBER OF  
ENROLLED  
STUDENTS



38.2

IB DP

AVERAGE SCORE  
OF CLASS OF 2021

90,350

SIZE OF THE  
CAMPUS IN  
SQUARE METER



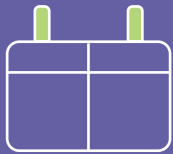
500



NUMBER OF  
EXTRACURRICULAR  
ACTIVITIES OFFERED  
PER YEAR

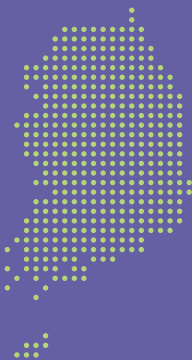
86

PERCENTAGE OF  
2021 GRADUATES  
WHO **EARNED MORE  
THAN 36 POINTS** ON  
IB DIPLOMA SCORE



2012

YEAR  
ESTABLISHED  
IN JEJU,  
KOREA



100

PERCENTAGE OF 2021  
GRADUATES THAT EARNED  
IB BILINGUAL DIPLOMA

67



PERCENTAGE OF  
FACULTY WITH  
GRADUATE  
DEGREES AND  
BEYOND

120

YEARS OF  
HERITAGE FROM  
ITS **SISTER SCHOOL**  
IN TORONTO, CANADA



93 %

2021 GRADUATES  
WHO ARE ACCEPTED  
TO **QS WORLD'S TOP  
100 UNIVERSITIES**

100

PERCENTAGE  
OF 2021  
GRADUATES WHO  
EARNED **IB DIPLOMA**



396

TOTAL NUMBER  
OF **GRADUATES**  
SINCE ESTABLISHMENT

# IB DP Courses Offered

GROUP 1	GROUP 2	GROUP 3	GROUP 4	GROUP 5	GROUP 6
Language & Literature	Language Acquisition	Individuals & Societies	Experimental Sciences	Mathematics	The Arts
English A: Language & Literature (HL/SL) Korean A: Language & Literature (HL/SL) Chinese A: Literature (HL/SL)	English B (HL) Mandarin Ab Initio: (SL) Pamoja French Ab Initio: (SL) Pamoja Spanish Ab Initio (SL) Pamoja	Business Management (HL/SL) Economics (HL/SL) Environmental Systems & Societies (SL) Geography (HL/SL) History (HL/SL)	Biology (HL/SL) Chemistry (HL/SL) Design Technology (HL/SL) Environmental Systems & Societies (SL) Physics (HL/SL) Computer Science (HL/SL)	Math Analysis & Approaches (HL/SL) Maths Applications & Interpretations (SL)	Music (HL/SL) Theater (HL/SL) Visual Arts (HL/SL)

# Branksome Hall Asia IB DP Results

Year	2021	2020	2019	2018	2017	2016	2015
Number of Graduates	61	67	81	71	49	35	32
Our IB Average	38	37	35	36	36	34	35



*International School of the Year*, ISC International School Awards 2021  
*Community Initiative*, ISC International School Awards 2021  
*Initiative to Support Students as Future-Thinking Innovators*, ISC International School Awards 2020

# CASE

Students realize their potential and nurture their unique talents outside of the classroom through our Creativity, Activity, Service and Enrichment (CASE) activities. A wide range of opportunities complement the academic curriculum and enrich the lives of students by strengthening their creative thinking, problem solving, creative judgment, aesthetic sense, physical development, social interaction, and leadership skills.

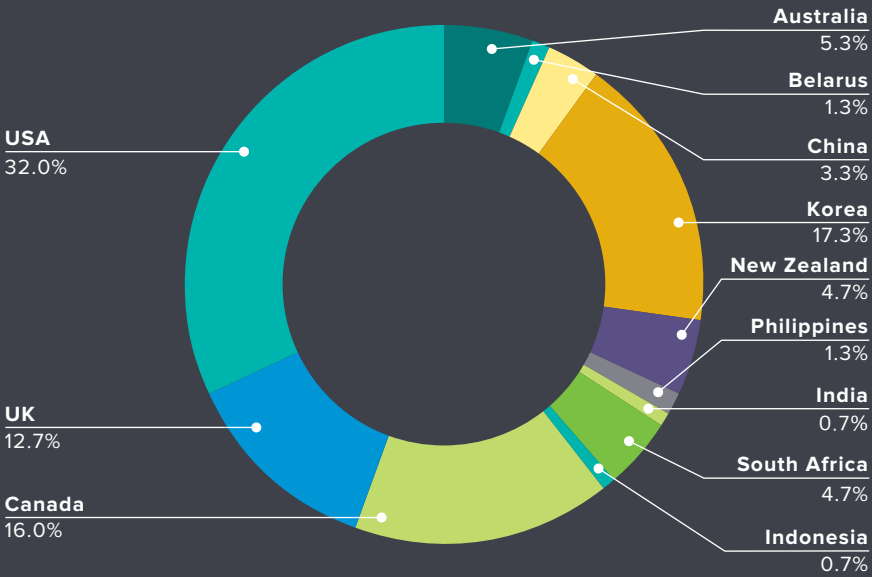
Branksome Hall Asia’s co-curricular program with more than 500 options per year

CREATIVITY	Branksome TV, Choir, Dance, Graphic Design, Model UN, Symphony Orchestra, Photography, Robotics, Studio Art (Visual Design), TEDx, Theater, Ballet, Calligraphy, Digital Storytelling, Production, String Academy, Vocal Academy, K-Pop Composition, K-Pop Vocal Training, etc.
ACTIVITY	Volleyball, Basketball, Soccer, Golf, Swimming, Cross-country, Track & Field, Hockey, Equestrian, Archery, Fencing, etc.
SERVICE	Animal Rights and Protection, Councils, Environmental Protection, Health and Medical Awareness, International Service Trips, Local Community Initiatives, Music In Hospitals, Peer Mentoring, Red Cross Youth, Sustainable Development, Tutoring in the local community, UN Girl Up, UNESCO and Human Rights, Women’s Empowerment, World Hunger, etc.
ENRICHMENT	Chess, Global Science, Healing Art, Math Competition, Math Support, Parallel Reading, Public Speaking, Writer’s Workshop, World Languages, etc.

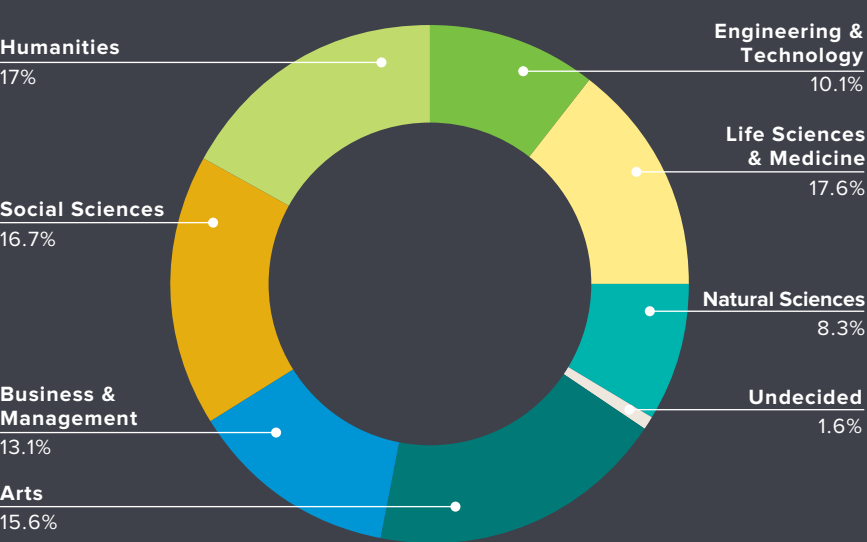


# Branksome Hall Asia in Graphs

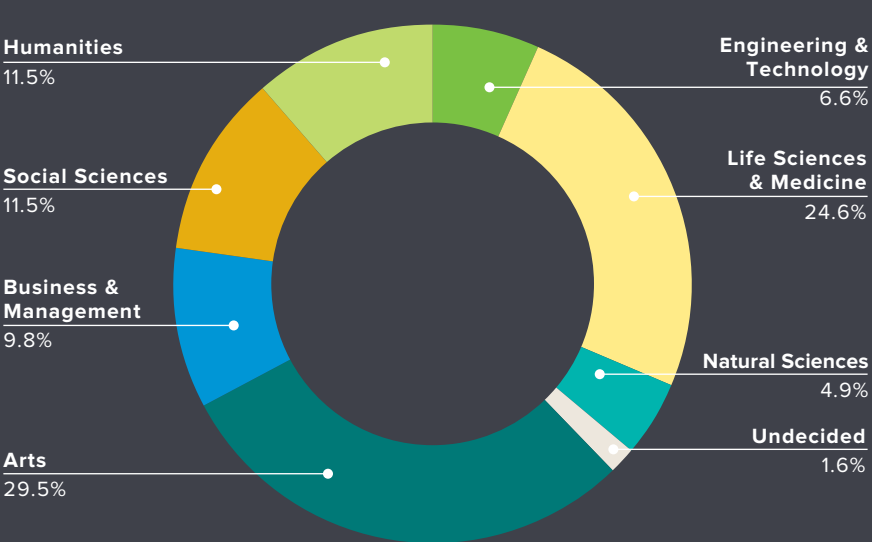
Faculty Nationalities



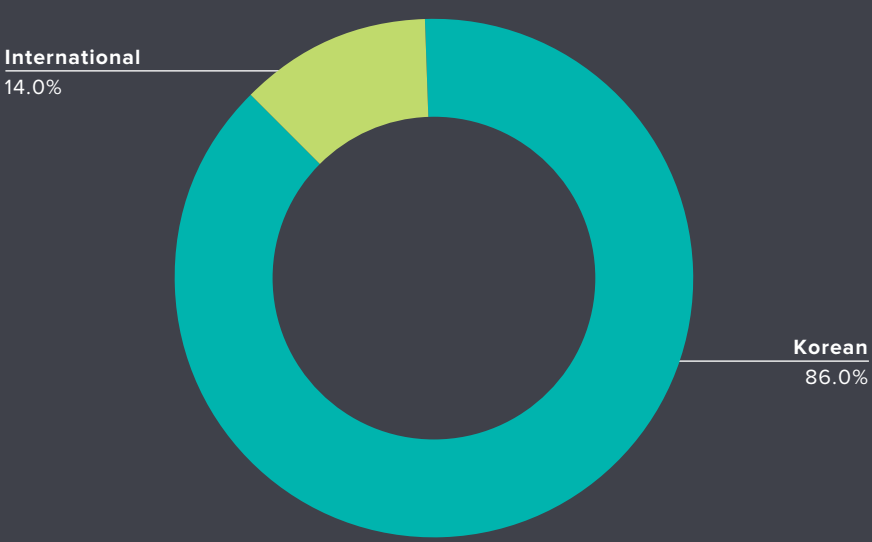
Intended Field of Study: Accumulated (2017-2021)



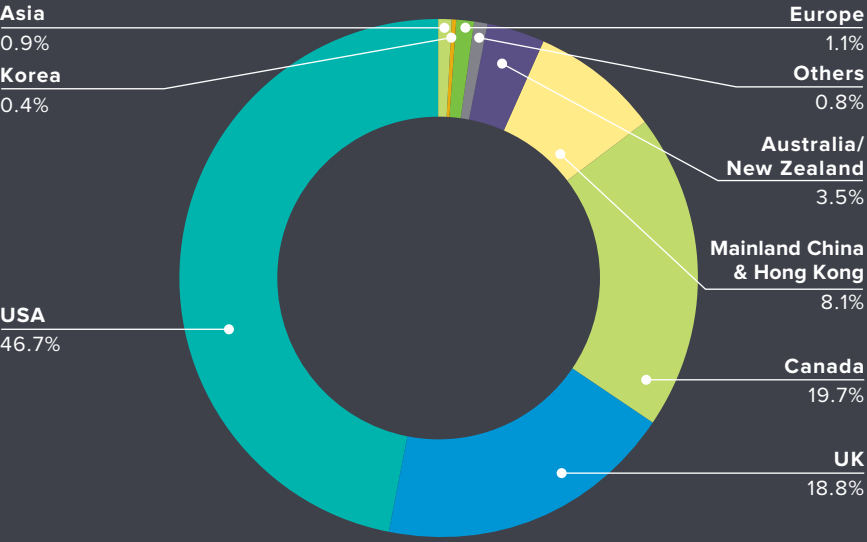
Intended Field of Study (Class of 2021)



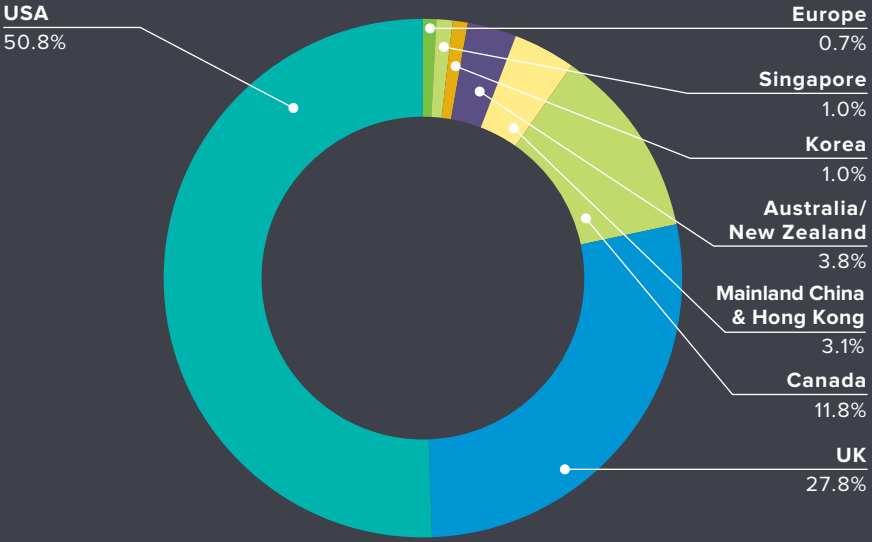
Student Nationalities



Choice of University by Country (2017-2021)






Choice of University by Country (Class of 2021)





# Select List of University Acceptances for Branksome Hall Asia Graduates (2015-2021)

				
<b>USA</b>	<b>UK</b>	<b>CANADA</b>	<b>EUROPE</b>	<b>KOREA</b>
Boston College	Central St. Martins, University of the Arts London	Dalhousie University	American University of Paris (France)	Seoul National University
Boston University	Courtauld Institute of Art	McGill University	Bard College Berlin (Germany)	Ewha Woman's University
Brown University	Durham University	McMaster University	Ecole hôtelière de Lausanne (EHL) (Switzerland)	Yonsei University
California Institute of Technology	Goldsmiths University of London	Ontario College of Art And Design	Glion Institute of Higher Education (Switzerland)	Kyunghee University
Carnegie Mellon University	Imperial College London	Queen's University	Royal College of Surgeons (Ireland)	SungKyunkwan University
Columbia University	King's College London	University of British Columbia	Tilburg University (Netherlands)	
Cornell University	London School of Economics (LSE)	University of Toronto	University of Amsterdam (Netherlands)	<b>ASIA</b>
Duke University	Loughborough University	University of Waterloo	University of Groningen (Netherlands)	Peking University
Emory University	Manchester School of Architecture			Waseda University
George Washington University	University College London			Keio University
Georgetown University	University of Bath			National University of Singapore
Georgia Institute of Technology	University of Bristol			Tokyo University
Johns Hopkins University	University of Cambridge			Hong Kong Polytechnic University
New York University	University of Edinburgh			Hong Kong University of Science and Technology
Northwestern University	University of London			University of Hong Kong
Parsons - The New School	University of Manchester			Nanyang Technological University
Pratt Institute	University of Warwick			
Rhode Island School of Design (RISD)				<b>AUSTRALIA &amp; NEW ZEALAND</b>
Rice University				Australia National University
Swarthmore College				Monash University
University of Chicago				Otago University
Univ. of California-Berkeley, LA, others				Royal Melbourne Institute of Technology
University of Illinois - Urbana-Champaign				University of Adelaide
University of Michigan				University of Auckland
University of North Carolina - Chapel Hill				University of Melbourne
University of Notre Dame				University of Queensland
University of Pennsylvania				University of Sydney
University of Southern California				University Technology of Sydney
Vanderbilt University				
Yale University				

\*The list is not exhaustive

# University Results of Class of 2021

**USA**

Abilene Christian University\*  
Albany College of Pharmacy and Health Sciences (ACPHS)  
ArtCenter College of Design\*  
Baylor University  
Berklee College of Music\*  
Boston College\*  
Boston University\*  
California College of the Arts  
California Institute of Technology\*  
Carnegie Mellon University  
Case Western Reserve University\*  
College for Creative Studies  
College of Wooster  
Cornell University\*  
Drexel University  
Emory University\*  
Fashion Institute of Technology (FIT)\*  
Fordham University  
George Washington University  
Indiana University - Bloomington  
Johns Hopkins University\*  
Lehigh University\*  
Massachusetts College of Pharmacy and Health Sciences  
Michigan State University  
New York University\*  
Northeastern University\*  
Ohio State University  
Otis College of Art and Design  
Parsons School of Design, The New School\*

Penn State University  
Pepperdine University  
Pratt Institute  
Purdue University  
Rochester Institute of Technology  
Rutgers University-New Brunswick  
Saint Louis University  
Savannah College of Art & Design (SCAD)  
School of the Art Institute of Chicago (SAIC)\*  
School of Visual Arts (SVA)  
St. John's University  
Stony Brook University - SUNY  
SUNY Albany\*  
Syracuse University  
Temple University  
The University of Chicago\*  
Tufts University\*  
University of California - Berkeley  
University of California - Davis\*  
University of California - Irvine\*  
University of California - Los Angeles  
University of California - Riverside  
University of California - San Diego  
University of California - Santa Barbara  
University of California - Santa Cruz  
University of Illinois at Chicago  
University of Illinois at Urbana Champaign (UIUC)\*  
University of Massachusetts - Amherst  
University of Minnesota - Twin Cities  
University of Nevada - Las Vegas (UNLV)

University of New Hampshire  
University of North Carolina - Chapel Hill (UNC)  
University of Pittsburgh  
University of Rhode Island  
University of Southern California\*  
University of Washington\*  
University of Wisconsin - Madison  
Vanderbilt University

**UK**

Aberystwyth University  
Angela Ruskin University  
Birbeck University of London  
Courtauld Institute of Art  
Coventry University  
Durham University  
Goldsmiths University of London  
Imperial College London  
King's College of London\*  
Kingston University London  
London Metropolitan University  
London School of Economics and Political Science\*  
Newcastle University  
Nottingham Trent University  
Oxford Brookes University  
Queen Mary University of London  
Royal Holloway, University of London  
Royal Veterinary College, University of London\*  
SOAS University of London  
Ulster University

University of the Arts - London (UAL)  
University College London (UCL)\*  
University for the Creative Arts  
University of Birmingham  
University of Brighton  
University of Bristol  
University of Edinburgh\*  
University of Glasgow  
University of Leeds  
University of Manchester  
University of Nottingham  
University of Sheffield  
University of Southampton  
University of St. Andrews  
University of Surrey  
University of Warwick

**CANADA**

Brock University  
Emily Carr University of Art & Design  
OCAD University  
Queen's University  
University of British Columbia (UBC)\*  
University of Toronto\*  
University of Toronto - Scarborough  
University of Toronto - Mississauga  
University of Waterloo\*  
Vancouver Film School  
Western University  
York University\*

**EUROPE**

Ecole Hotelier de Lausanne (EHL)\*  
Swiss Hotel Management School\*  
Wageningen University

**KOREA**

Fashion Institute of Technology - Korea  
George Mason University Korea  
SUNY Korea  
University of Utah Asia Campus  
Yonsei University\*\*

**ASIA**

Hong Kong University\*  
Hong Kong University of Science and Technology\*  
Nanyang Technological University\*  
National University of Singapore\*  
New York University (Shanghai Campus)

**AUSTRALIA & NEW ZEALAND**

Griffiths University  
Monash University  
University of Melbourne  
University of Queensland  
University of Sydney\*  
University of Western Sydney

\*denotes matriculation

# Admissions Process

1. RESEARCH	2. VISIT	3. APPLY	4. ASSESS	5. INTERVIEW	6. ACCEPTED
<ul style="list-style-type: none"><li>- Visit <b>www.branksome.asia</b></li><li>- Follow Branksome Hall Asia social media on on Facebook, Instagram, YouTube</li><li>- Explore IB and other programs</li><li>- Find out what is a good fit for my child</li><li>- Attend an information session online or offline</li></ul>	<p>If travelling is possible:</p> <ul style="list-style-type: none"><li>- Make an appointment via phone / email / inquiry on website</li><li>- Plan a trip to Jeju</li><li>- Visit Branksome Hall Asia campus</li><li>- Participate on a campus tour</li></ul> <p>If travelling is restricted:</p> <ul style="list-style-type: none"><li>- Watch our <a href="#">virtual tour</a></li></ul>	<ul style="list-style-type: none"><li>- Request relevant documents and recommendations at current school</li><li>- Fill out an application form online</li><li>- Submit documents at the point of application</li><li>- Pay application fee</li></ul>	<ul style="list-style-type: none"><li>- Take assessment depending on the grade</li></ul>	<ul style="list-style-type: none"><li>- Interview for your child</li><li>- Parent interview to discuss education philosophy and fit for school</li></ul>	<ul style="list-style-type: none"><li>- Upon receiving offer letter, reply with intent to enroll</li><li>- Pay Enrollment Deposit and set starting date as appropriate</li></ul>

GRADE	REQUIRED DOCUMENTS (AS OF 2022)
All (JK Prep - Grade 11)	<ul style="list-style-type: none"><li>- Online application</li><li>- Photo</li><li>- Copy of passport</li><li>- Parent Statement Form</li></ul>
Grades 1	<ul style="list-style-type: none"><li>- School records</li><li>- Homeroom teacher recommendation</li><li>- Parent Statement Form</li></ul>
Grades 2-5	<ul style="list-style-type: none"><li>- School records</li><li>- Homeroom teacher recommendation</li><li>- Student Profile</li><li>- Parent Statement Form</li></ul>
Grades 6-11	<ul style="list-style-type: none"><li>- Student records</li><li>- Recommendations from English and Math teachers</li><li>- Student Profile</li><li>- Parent Statement Form</li></ul>

GRADE	ASSESSMENT (AS OF 2022)
JK Prep - SK	<ul style="list-style-type: none"><li>- Small group activity observation</li></ul>
Grades 1-2	<ul style="list-style-type: none"><li>- Branksome Hall Asia assessment (English reading and writing; Math; Mother tongue writing if Korean or Chinese)</li></ul>
Grades 3-5	<ul style="list-style-type: none"><li>- MAP Test (English &amp; Math)</li><li>- Branksome Hall Asia assessment (English reading, writing and speaking; Mother tongue writing and speaking if Korean or Chinese)</li><li>- Student interview</li></ul>
Grades 6-11	<ul style="list-style-type: none"><li>- MAP Test (English &amp; Math)</li><li>- Branksome Hall Asia assessment (English writing and speaking; Mother tongue writing and speaking if Korean or Chinese)</li><li>- Student interview</li><li>- Parent interview</li></ul>

