



Riverbend Park Labyrinth

PROJECT UPDATES AND REQUEST FOR INPUT

March 3, 2021

Alicia Hunt, Director

Annie Streetman, Planner

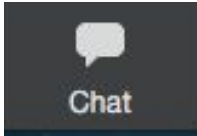
Ali Hiple, Intern

Danielle Moriarty, Medford Arts Council

Carolyn Lewenberg, Project Artist

Riverbend Park Labyrinth Public Meeting

HOW TO PARTICIPATE



We will leave plenty of time for discussion after we've had a chance to present an overview of this project, but please feel free to submit any comments or questions during the meeting via Zoom's Chat feature and we will address them at the end.



Questions and comments can also be emailed at any time during or following this meeting to ocd@medford-ma.gov.



During the discussion portion of the meeting, please use the raise hand feature in zoom or indicate in the chat that you would like to speak.



If you are having any difficulty submitting comments through the Zoom or via email, please call our office at 781-393-2480 - Ali is staffing the phone this evening and will be able to assist you.

GOALS FOR TONIGHT

- 1 Provide you with the latest updates on this ongoing project
- 2 Present some preliminary design ideas and options for discussion
- 3 Collect feedback and input from all of you
- 4 Identify project next steps

38

MALDEN

MEDFORD



DEN
ER

60

Northern
Strand

60

I-93

16



16

Malden
River

RIVERBEND PARK
LABYRINTH

Riverbend
Park

16

Macdonald
Park

WELLINGTON



Mystic River

Blessing
of the Bay

Baxter
Park

DAVIS
PROJECT LOCATION

0

2 mi

2A

99

SOMERVILLE

EXISTING SITE



View of site from path, walking toward river and Clippership Connector



View of site from path, walking toward Freedom Way and school parking area

PROJECT BACKGROUND

SOIL CONTAMINATION

- Tail end of multiple phases of contamination clean up in Riverbend Park following the discovery of surface level arsenic and lead above MA DEP “reportable levels”
- This 1,000 square foot corner of the park, close to the Andrews School and adjacent to where the future Clippership Connector will tie into the existing path network, showed exceptionally high levels of soil contamination during testing and is currently fenced off.



PROJECT BACKGROUND

RETURNING THE SITE TO ACTIVE USE

- The proposed project will construct a concrete cap (a type of engineered barrier) over the area and return this corner of the park to active use. By “capping” that section, contamination at that corner will be contained and will not pose a risk to park users or to the general public.
- The City held several public meetings in 2018 and 2019 where we heard:
 - A desire to return this space to active use and remedy a current eyesore and safety hazard
 - The need for a public space that would be intended for quiet use given the location’s close proximity to residences
 - Excitement around the idea for a meditative labyrinth space for this site

PROJECT GOALS

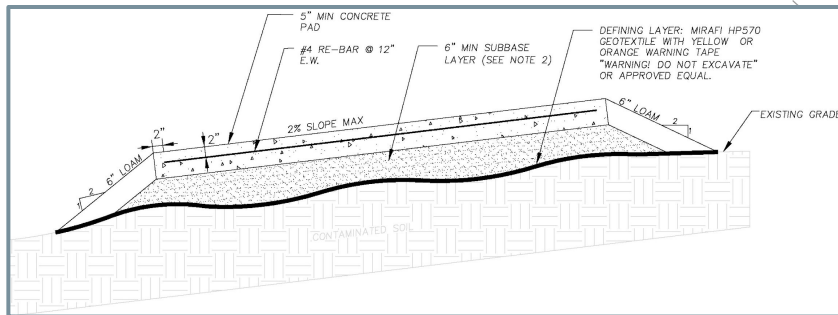
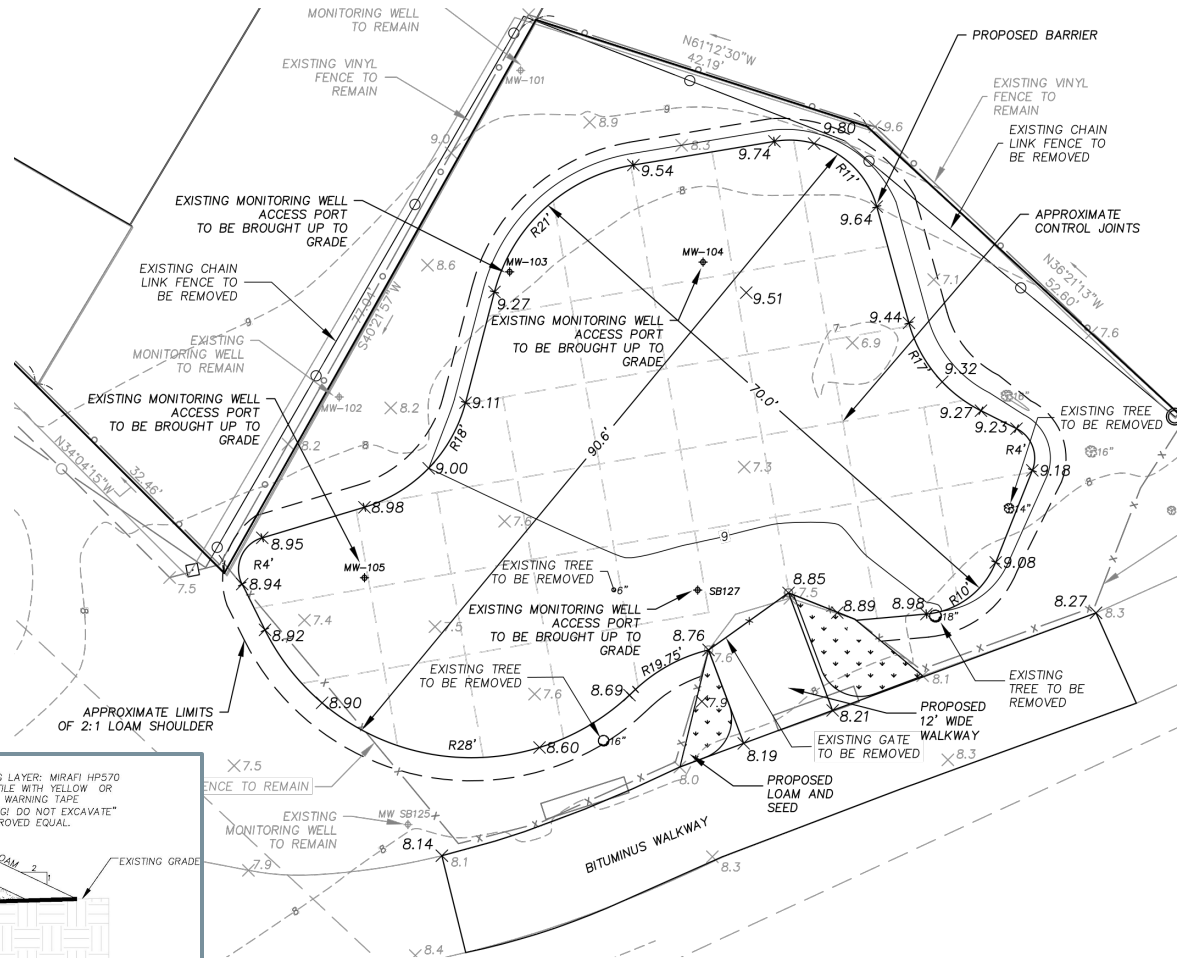
1. Remedy a safety hazard due to high levels of contamination
2. Create a quiet, meditative space for people to walk the labyrinth
3. Connect to and celebrate the nearby Mystic River through use of natural elements and winding patterns

PROPOSED PROJECT CONCEPT

Transformation of a contaminated site into a space for healing

CONSTRUCTION OF THE CAP

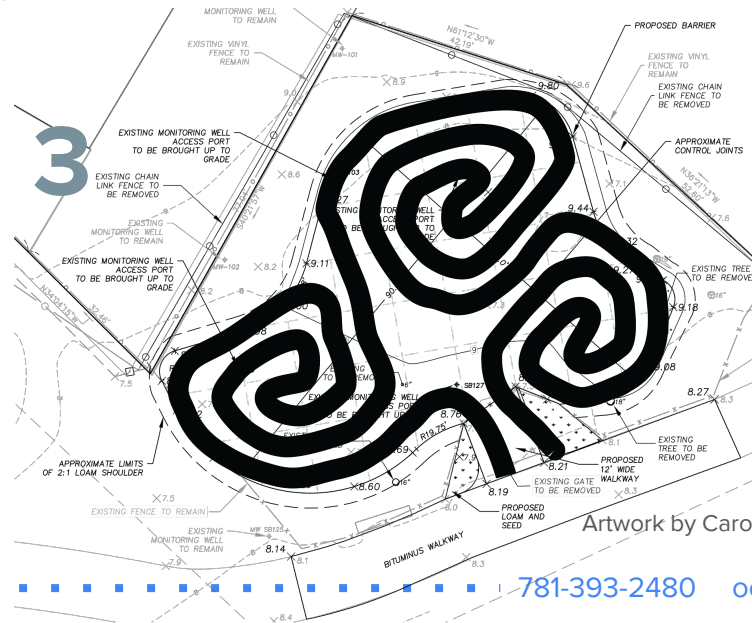
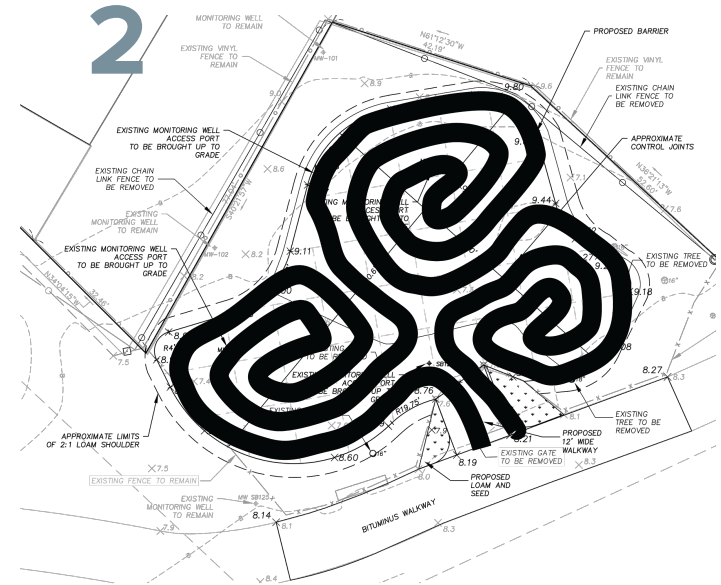
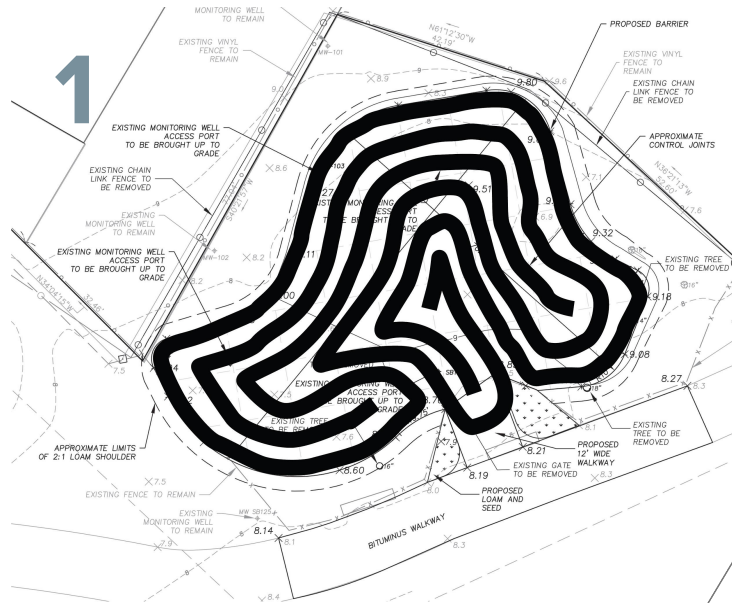
- Shape of cap is based on testing done in 2019
- Barrier would extend approx. 1 foot above existing grade and loam would be brought in to taper the sides down to existing grade
- Slopes are ADA compliant
- Unfortunately, a few of the existing trees will need to be removed to accommodate the cap



Plans prepared by CDW Consultants, Inc.
Licensed Site Professional (LSP) for the project



LAYOUT IDEAS



Paths shown could be either 4' or 5 ½' wide

Artwork by Carolyn Lewenberg

ACCESSIBILITY

SLOPE & GRADE:

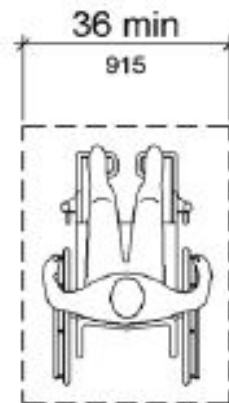
- Slope is ADA compliant and cap is an even grade, slightly textured surface
- The labyrinth will be a multi-sensory experience through changes in ground level textures and placement of river stones

ACCESS TO SITE:

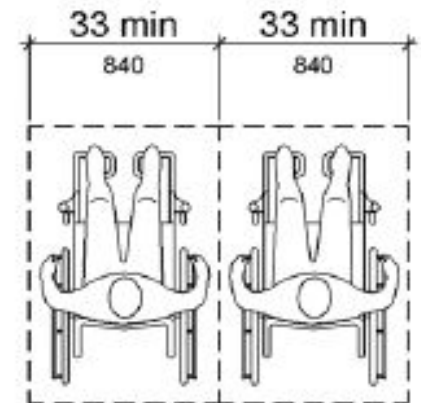
- Wheelchair-accessible parking & drop off close to the labyrinth
- Walkway and approach to labyrinth is accessible
- Clear signage for welcoming people to the labyrinth

WIDTH OF PATHS:

- Either 4' wide with clear “one way signage”
- OR 5 ½ ' wide and two-way



(a)
single space



(b)
two spaces

ADA minimum clear width for two wheelchairs to pass is 60 inches (5 ft). However, 5 ½ ft may allow for more comfort in passing

Source: Minnesota Accessibility Code

<https://up.codes/viewer/minnesota/mn-accessibility-code-2015/chapter/8/special-rooms-and-spaces#8>

MATERIALS

RIVERBED-INSPIRED TEXTURE SKIN STAMPS FOR PATHS



Pebblestone



Blue Stone

RIVERSTONES BETWEEN PATHS



NATIVE PLANTINGS

Mix of trees and shrubs along fence
(shade & screening along perimeter)

Perennials between path and
labyrinth - could be a wildflower mix
or a mix of low shrubs, creeping
groundcovers and things like lilies
and hostas



MAINTENANCE AND UPKEEP

The design is meant to be low maintenance. A planted buffer around the hardscape is key to creating a cozy sense of enclosure, and will require periodic weeding. Plants that are native to our region and suited to the site conditions will be selected for low maintenance.

- Spring/Summer/Fall: Seasonal weeding of plants around the perimeter
- Ongoing: Removal of trash that blows in
- Late fall: sweep leaves that fall or blow into labyrinth into plants around the perimeter. Adding this organic material is the same as mulching.
- Spring: rake out perennial beds



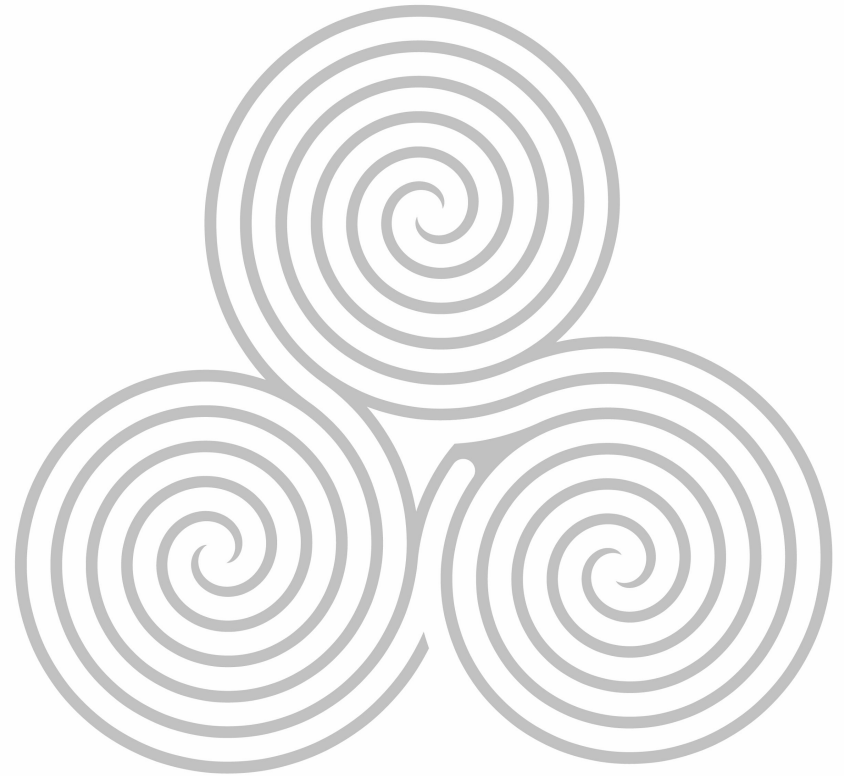
Artwork by Carolyn Lewenberg

OTHER IDEAS

MEANING BEHIND THE TRISKELION FORM

The Triskelion form can represent lots of different things, and its significance can be open to interpretation as *three* is an attractive number with a special appeal. This form goes beyond any one religion or culture to become a universal symbol:

1. **Physical, spiritual and celestial** realms of the Celtic worlds
2. **Earth, sky and water** – the three main aspects of the physical world
3. The symbol signifies **movement and motion**
4. **Mind, body and spirit**
5. The **present, past and future**
6. **Creation, preservation and destruction**



OTHER IDEAS

POETRY

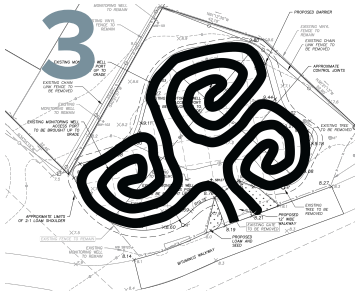
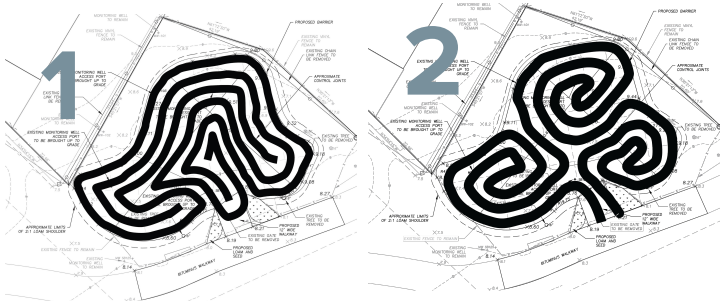
Would coordinate with the Mayor’s office who received some great applications for their poet laureate position

PHYSICAL ELEMENTS

Seating

Sculpture

A rock cairn



These elements could be incorporated into the center of each swirl (layouts 2 and 3)

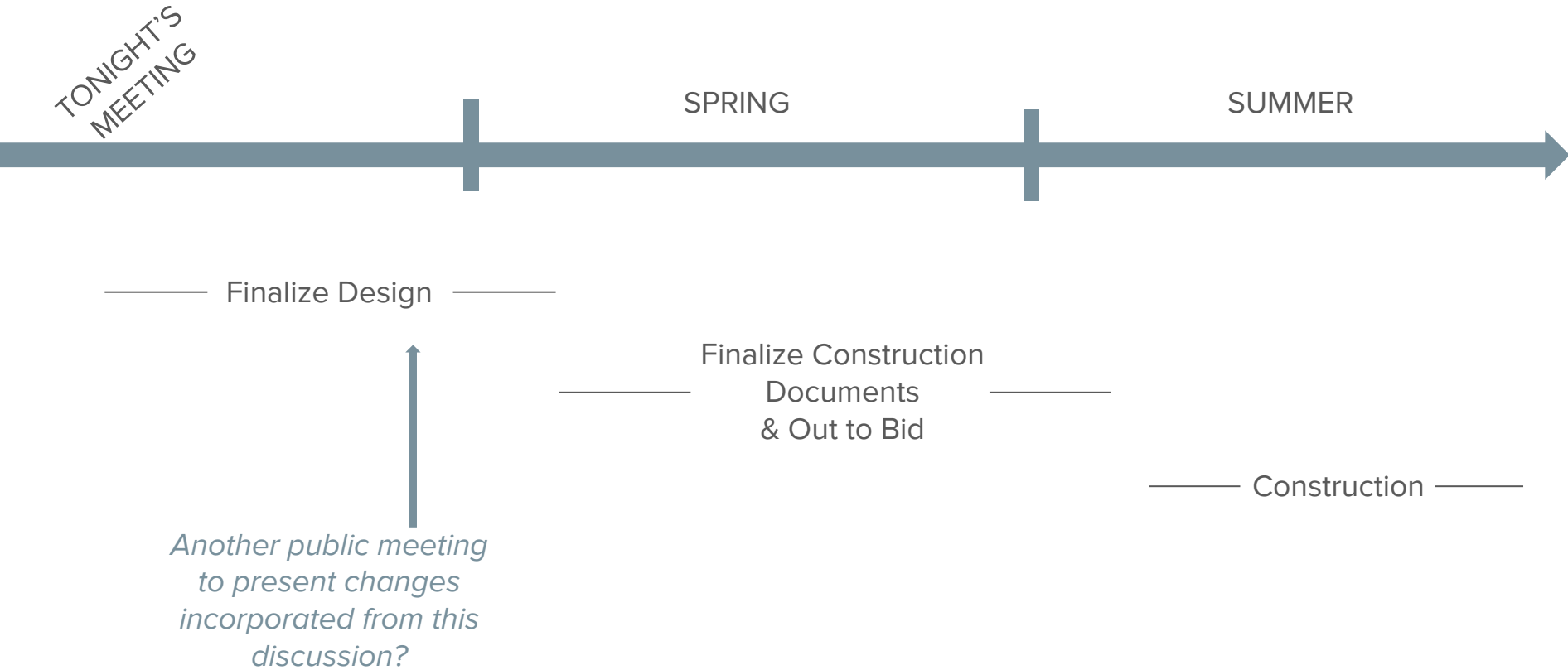
OR

located in the center of the labyrinth itself (layouts 1 and 3)

MEMORIAL

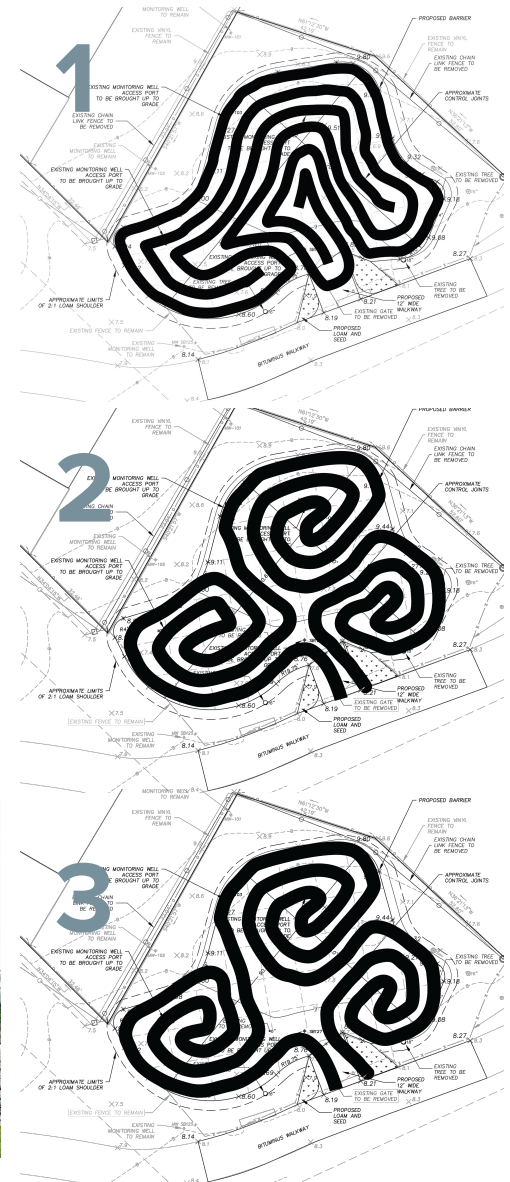
There may be an opportunity to dedicate this space as a memorial, such as to those lost during the ongoing pandemic. What are your thoughts on this idea?

PROPOSED TIMELINE & NEXT STEPS

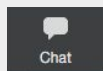


FOR DISCUSSION

- Overall concept (celebrating the river, healing, meditative space)
- Materials (stamping, natural stones, plantings)
- Layout options (triskelion or single swirl? Space for something in the middle of labyrinth? Width of the paths)
- Opportunity to incorporate poetry
- Seating elements
- Sculptural elements
- Dedication of this space as a memorial



TO PARTICIPATE:



type your
questions



request
to speak



781-393-2480



ocd@medford-ma.gov

Thank You!

Reach out to us anytime at
ocd@medford-ma.gov or 781-393-2480