



# **St. Martin Parish** **Ready Start Network**



Coalition Member Meeting  
October 14, 2021

# Objectives

1. Advisory Council (Planning & Building)
2. Community Outreach
3. Community Presentations (Blueprint Goal #1)





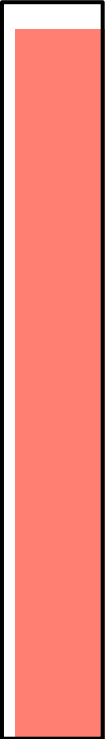
# Vision & Mission



01

## Vision

St. Martin Parish is a community where all families have access and utilize high quality early childhood care and education services in which the whole child is educated.



02

## Mission

Through the use of accountable leadership, coordinated strategic planning and financial sustainability, the St. Martin Parish Early Childhood Network's mission is to provide and fill seats of high quality care and education to all eligible families in the parish by effective recruitment with a seamless process to understand eligibility so that all children benefit from highly effective early childhood programs.



## Early Childhood Network Blueprint

**Our vision:** St. Martin Parish is a community where all families have access and utilize high quality early childhood care and education services in which the whole child is educated.

**Our mission:** Through the use of accountable leadership, coordinated strategic planning and financial sustainability, the St. Martin Parish Early Childhood Network's mission is to provide and fill seats of high quality care and education to all eligible families in the parish by effective recruitment with a seamless process to understand eligibility so that all children benefit from highly effective early childhood programs.

### Who We Are:

#### Childcare Centers

- ❖ Boyer's Preschool and Childcare Inc.
- ❖ Little Blessings of Breaux Bridge
- ❖ Owen's Developmental Learning Center
- ❖ St. Martin Sunshine Playschool

#### School System

- ❖ Breaux Bridge Primary
- ❖ Cecilia Primary
- ❖ Early Learning Center
- ❖ Parks Primary
- ❖ Stephenville Elementary

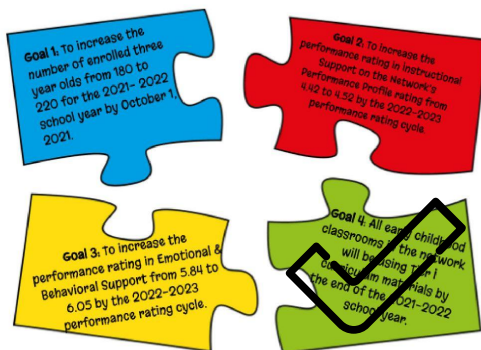
#### Head Start/ Early Head Start

- ❖ Breaux Bridge Head Start Academy
- ❖ Cecilia Head Start Academy
- ❖ St. Martinville Early Head Start Academy
- ❖ St. Martinville Head Start Academy

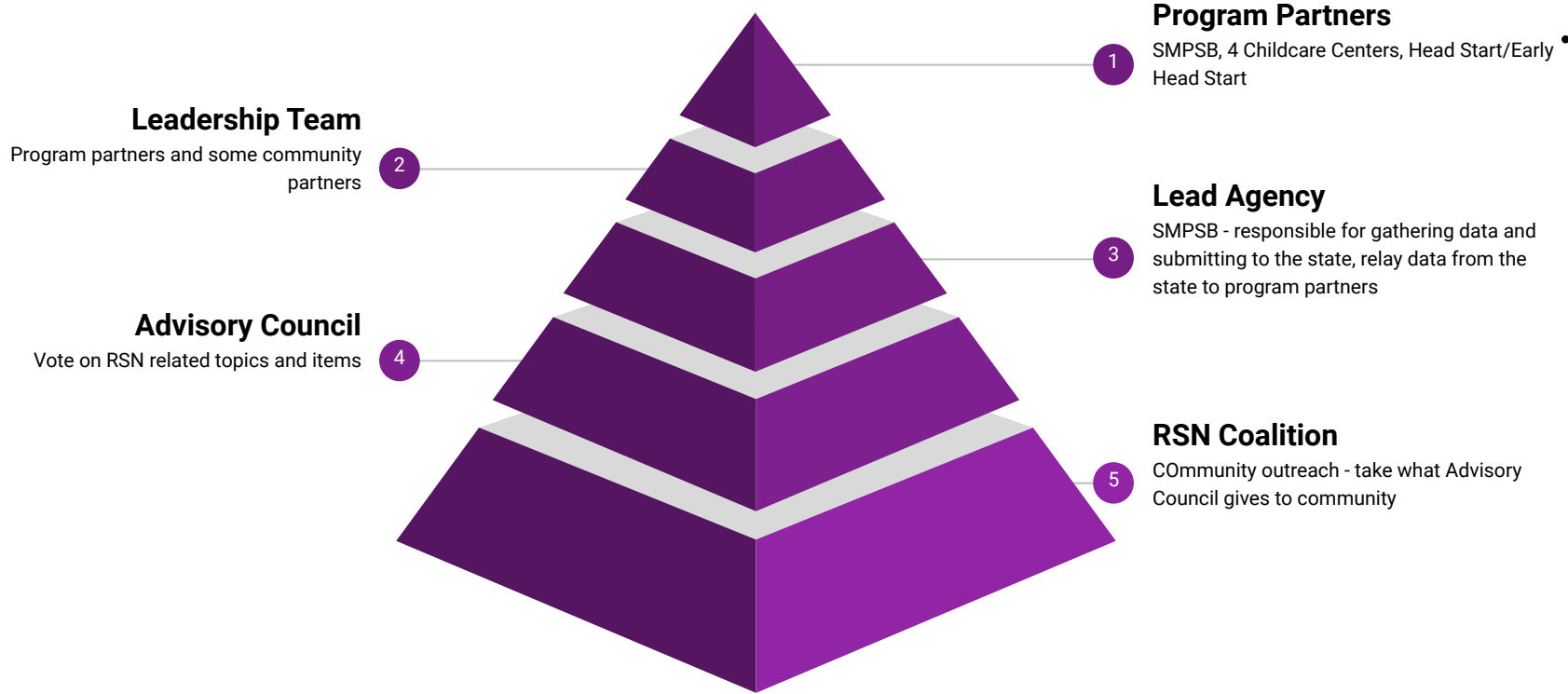
#### Community

- ❖ Early Steps (Acadiana Area Services District)
- ❖ Volunteers of America Greater Baton Rouge-Acadiana Programs (Child Care Resource and Referral)
- ❖ The Family Tree
- ❖ United Way of Acadiana

**Performance Scores:** Our 2018-2019 performance profile ranking is 5.52 on a 7 point scale. We are currently servicing over 800 children in St. Martin Parish.



# How does this all fit together?





# **St. Martin Parish Ready Start Network**

Advisory Council

# Advisory Council



- ❖ Provide process and structure necessary for funding decisions related to grants, private donations, and public dollars our RSN will receive.
- ❖ Advise and make decisions to support the network's mission and vision by:
  - Ensuring necessary policies and procedures are in place
  - Approving updates for the network blueprint, bylaws, etc.
  - Evaluating programs and initiatives in relation to the blueprint
  - Endorsing the allocation of funds to accomplish the goals outlined in the blueprint
  - Ensuring the network is financially healthy and has the resources to accomplish its strategic goals
  - Evaluating its own work and processes to ensure that policies and procedures are effective
  - Bringing concerns from the community that is preventing our EC Programs from being highly effective.



# **St. Martin Parish Ready Start Network**

Community Outreach





# Discover What St. Martin Parish Early Childhood Has To Offer!

## BIRTH TO 5

We support learning through play, creative expression, and guided activities to strengthen relationships and build a strong foundation and an early love of learning.

We facilitate instruction based on a research based curriculum across the parish to teach language and literacy development, as well as math and science concepts.

## HEALTH AND WELLNESS

We promote fine motor and gross motor physical development through outdoor and indoor play. We provide a balanced meal for breakfast and lunch.

We provide medical vision and hearing screenings in school system Pre-K and Head Start / Early Head Start programs.

## FUNDING

School System Pre-K is grant funded for eligible families

Head Start/Early Head Start is grant funded for eligible families

Type III Child Care Centers are funded through tuition and CCAP.

## DISABILITY

Instruction is given through whole group, small group, and individualized settings to meet the needs of all students.

For more information contact:

**Speech/Child Search**

Dawn Richard: 337-909-2867

**Early Steps**

337-359-8748

## MISSION

Through the use of accountable leadership, coordinated strategic planning, and financial sustainability, the St. Martin Parish Early Childhood Network's mission is to provide and fill seats of high quality care and education to all eligible families in the parish by effective recruitment with a seamless process to understand eligibility so that all children benefit from highly effective early childhood programs.

## VISION

St. Martin Parish is a community where all families have access and utilize high quality early childhood care and education services in which the whole child is educated.

## VISIT OUR WEBSITE





# Early Childhood Network Facilities by Area



## Breaux Bridge:

Boyers Childcare and Preschool  
Little Blessings of Breaux Bridge  
Breaux Bridge Head Start / Early Head Start Academy  
Breaux Bridge Primary

## Cecilia:

Cecilia Head Start / Early Head Start Academy  
Cecilia Primary

## St. Martinville:

St. Martin Sunshine Playschool  
Owens Developmental Learning Center  
St. Martinville Early Head Start Academy  
St. Martinville Head Start Academy  
Early Learning Center

## Parks:

Parks Primary

## Catahoula:

N/A

## Stephensville:

Stephensville Elementary

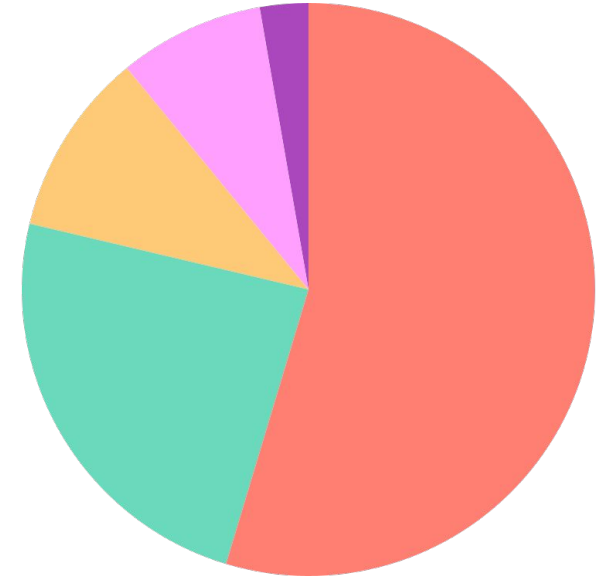
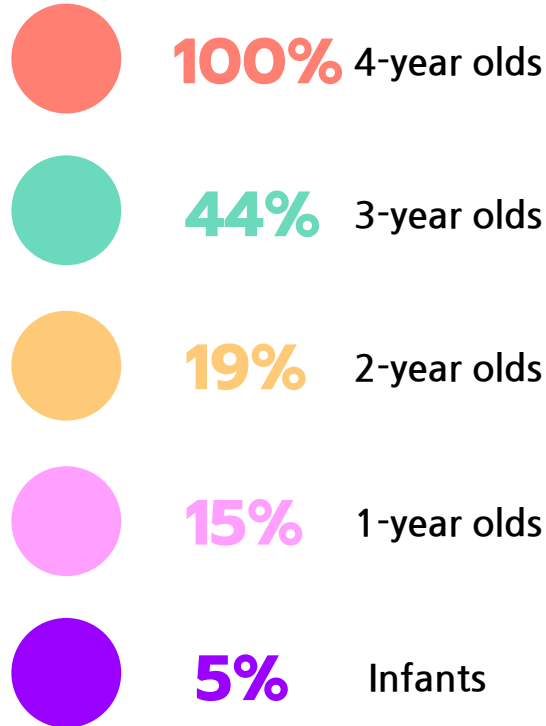


# Data by Age

Percentage reflects number of children accessing a publicly funded slot compared to the number of low-income children, by age

There are **2080 children** in need birth to age four.

**Only 39%** are able to access publicly funded seats, **leaving over 1,300 children unserved.**



Data comes from [www.policyinstitutela.org](http://www.policyinstitutela.org)



# **St. Martin Parish Ready Start Network**

Presentation Sign-Up



# Presentation Sign-Up

Organization	Date	Time	Address	RSN Rep.
Breaux Bridge Area Chamber of Commerce <u>Contact:</u> Tina 332-5406	11/17/21 (Wednesday)	11:30-12:30	Call Tina for location 332-5406	
Breaux Bridge Crawfish Association <u>Contact:</u> Mark Bernard 224-7824	11/8/21 (Monday)	6:30	520 Parkway Dr.	
Breaux Bridge Volunteer Fire Dept. <u>Contact:</u> Vicky 332-1314				
Civic Club <u>Contact:</u> Ricky Calais 332-8301	Every Friday	7:30-8:45 AM		
Lions Club <u>Contact:</u> Terry Latiolais 501-2101	11/11/21 (Thursday)	6:00	Members Camp	
Knights of Columbus <u>Contact:</u> Kenneth Tauzin 654-4944	11/9/21 (Tuesday)	7:00-8:30 PM	644 Washington	
Catholic Daughters of America <u>Contact:</u> Christine Gaspard 967-1592	Thursday	6/6:30 PM		



# Did We Meet Our Target?

1. Advisory Council (Planning & Building)
2. Community Outreach
3. Community Presentations (Blueprint Goal #1)

