

The background is a solid purple color. Four hands, each holding a different colored puzzle piece (red, green, blue, and yellow), are positioned around the central text. The hands are stylized with simple lines and are wearing sleeves of various colors (yellow, blue, brown, and green).

St. Martin Parish Ready Start Network



Agenda

- Introductions
- St. Martin E.C. Network Performance Data
- Recent Enrollment
- 22-23 Coordinated Enrollment Campaign

Welcome!



Please introduce yourself by stating:

1. Your name
2. Your affiliation with St. Martin parish

Vision & Mission

Vision:

St. Martin Parish is a community where all families have access and utilize high quality early childhood care and education services in which the whole child is educated.

Mission:

Through the use of accountable leadership, coordinated strategic planning and financial sustainability, the St. Martin Parish Early Childhood Network's mission is to provide and fill seats of high quality care and education to all eligible families in the parish by effective recruitment with a seamless process to understand eligibility so that all children benefit from highly effective early childhood programs.



Blueprint Goals



To show a 10% increase of enrolled three year olds by October 1, 2022.



To increase the performance rating in Instructional Support on the Network's Performance Profile rating from 4.42 to 4.52 by the 2022-2023 performance rating cycle.

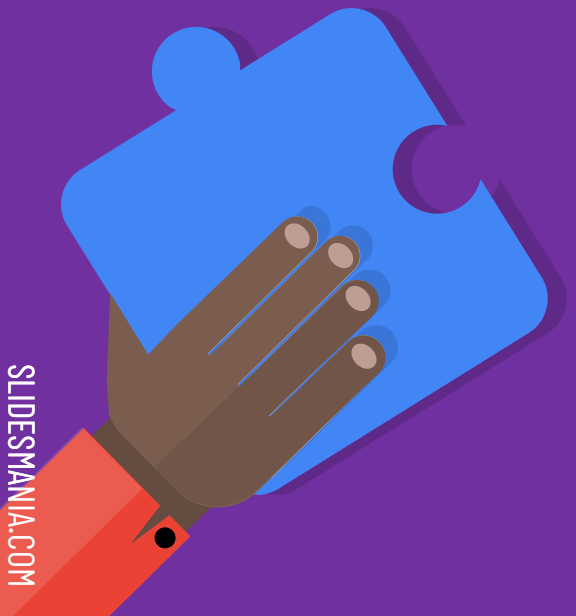


To increase the performance rating in Emotional & Behavioral Support from 5.84 to 6.05 by the 2022-2023 performance rating cycle.



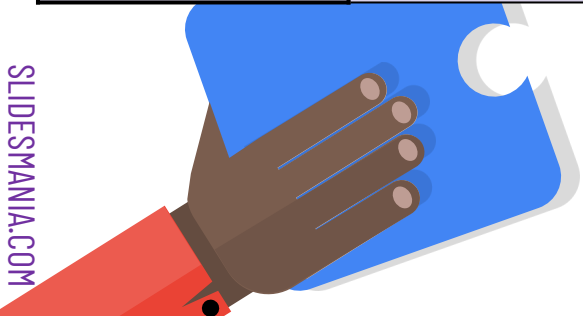
All early childhood classrooms will complete 12 hours of professional development for effective implementation of the Tier 1 curriculum by July 1, 2022.

Performance Data

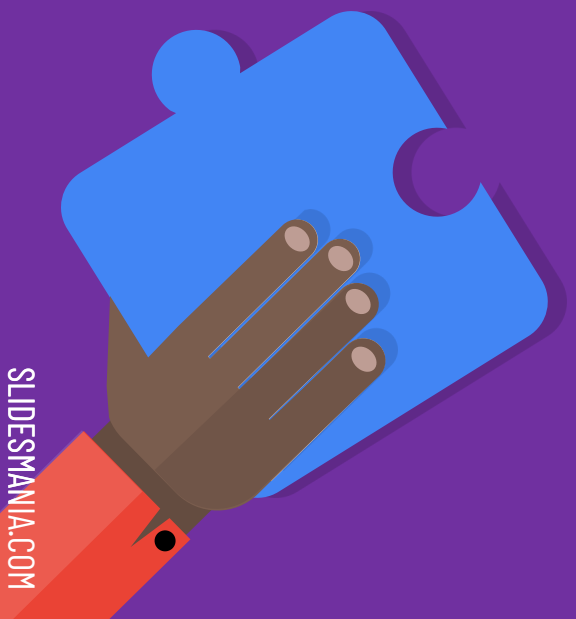


Fall 2021 Performance Data

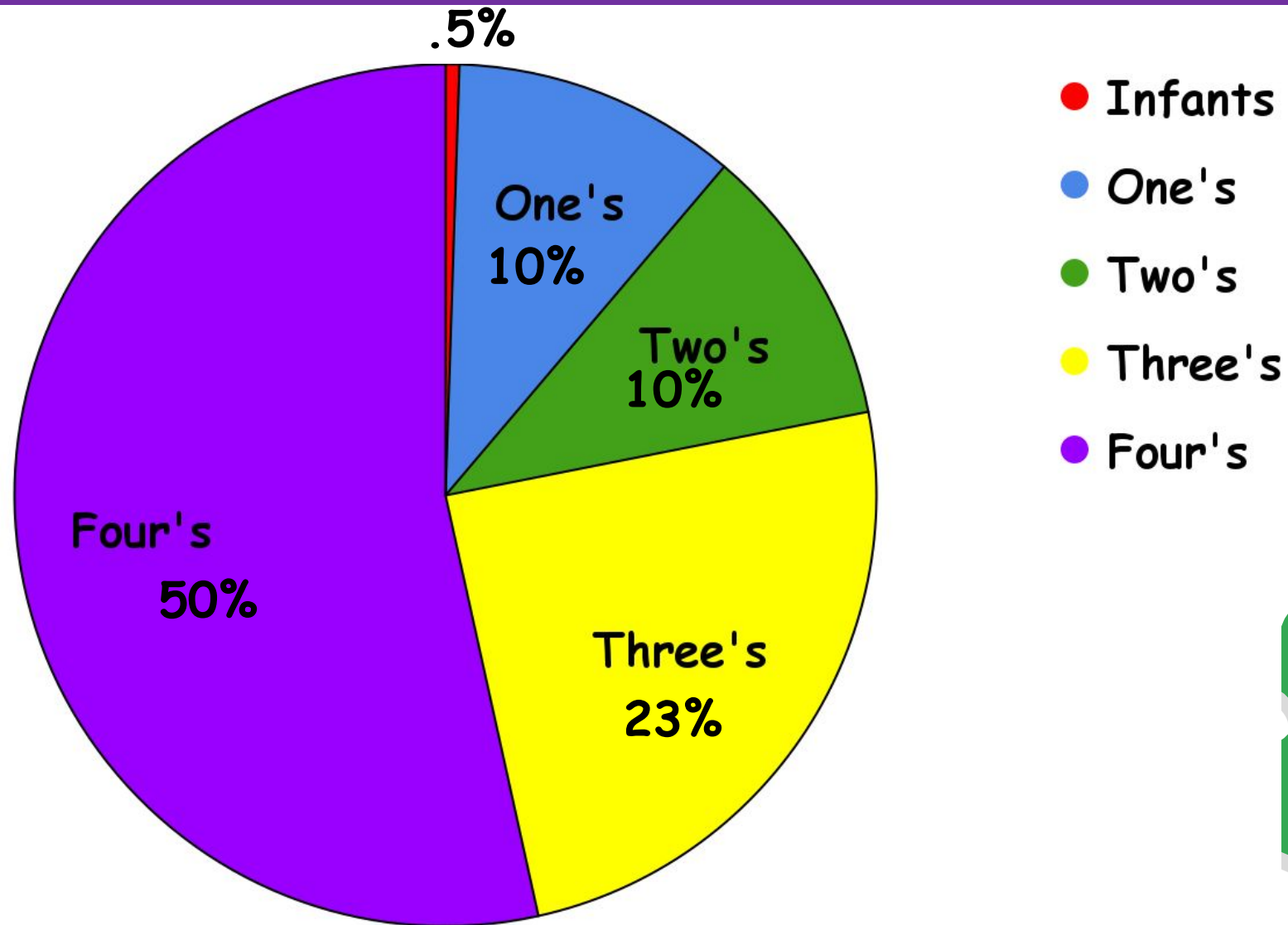
Year	Emotional Support	Classroom Organization	Instructional Support	Emotional & Behavior Support	Engaged Support for Learning	Responsive Caregiving	Overall
18-19	6.21	6.09	4.42	5.84	4.77	–	5.52
19-20	6.24	5.94	4.70	5.81	4.84	–	5.56
20-21	6.33	6.14	4.82	5.91	4.66	5.82	5.65
Fall 2021	6.14	5.63	4.54	5.9	4.53	5.52	5.39



Recent Enrollment



Enrollment Data





Coordinated Enrollment Campaign

Coordinated Enrollment Campaign

3 flyers have been created to send out through Teche News, Remind, and posted on our website and Facebook page.

St. Martin Parish Early Childhood Network
Putting the puzzle pieces together one child at a time.

St. Martin Parish Early Childhood Open Enrollment
March 14-18, 2022

Type III Child Care Centers

Boyer's Preschool & Child Care Phone: 337-332-6116 Open House: March 16 (3:30-5:30pm)	Owen's Developmental Learning Center Phone: 337-394-3377 Open House: March 14-18 ★ WAIVED ENROLLMENT FEES! ★
Little Blessings of Breaux Bridge Phone: 337-332-4539	St. Martin Sunshine Playschool Phone: 337-394-9615 Open House: March 16 (4-5pm)

Head Start/Early Head Start
(6 weeks - 3yrs. old)

Contact Information

Breaux Bridge Head Start Academy: 909-2251 St. Martinville Early Head Start Academy: 909-2265
Cecilia Head Start Academy: 909-2256 St. Martinville Head Start Academy: 909-2260

Required Documents

- Child's Birth Certificate
- Child's Social Security Card
- Child's Immunization Record
- Parent/Legal Guardian ID
- Insurance/Medical Card
- W-2, 1040A/1040, SSI Award Letter
- Head Start Application

St. Martin Parish Public Pre-K
(Must be 4 by September 30, 2022)

Schools

Breaux Bridge Primary
Cecilia Primary
Early Learning Center
Parks Primary
Stephensville Elementary

Required Documents

- Child's Birth Certificate
- Child's Social Security Card
- Child's Immunization Record
- Parent/Legal Guardian ID
- Proof of Income
- Proof of Address
 - Current lease/Rental agreement, mortgage statement, Property Tax Bill, OR Notarized Residency Affidavit (if you live with someone and bills are not under your name)
 - AND CURRENT Cable, Electric, Water, Gas, OR Garage Bill

Enrollment Begins March 14

For more information, visit our Early Childhood Network page at www.saintmartinschools.org, or call Mrs. Brooke at 909-2815.
For performance ratings, visit www.louisianaschools.com.

St. Martin Parish Early Childhood Network
Putting the puzzle pieces together one child at a time.

St. Martin Parish Early Childhood Open Enrollment
Begins March 14, 2022

Type III Child Care Centers
For more information, contact the centers below.

Boyer's Preschool & Child Care
337-332-6116

Little Blessings of Breaux Bridge
337-332-4539

Owen's Developmental Learning Center
337-394-3377

St. Martin Sunshine Playschool
337-394-9615

Head Start/Early Head Start
For more information, contact the centers below.

Breaux Bridge Head Start Academy
337-909-2251

Cecilia Head Start Academy
337-909-2256

St. Martinville Early Head Start Academy
337-909-2265

St. Martinville Head Start Academy
337-909-2260

To register for Pre-K at the schools listed below, visit the Early Childhood Network page at www.saintmartinschools.org.

St. Martin Parish Public Pre-K

Breaux Bridge Primary
Cecilia Primary
Early Learning Center
Parks Primary
Stephensville Elementary

Enrollment Begins March 14 ONLINE REGISTRATION ONLY Must be 4 by September 30, 2022

Quick Reference Chart

St. Martin Parish Early Childhood Community Network Program Partners	Infants	Toddlers	Pre-K 3	Pre-K 4	Transportation Provided	CCAP Accepted	Free Meal Required	Before & After Care Services May Be Provided	Children with Special Needs Included
Boyer's Preschool & Child Care Inc.	x	x	x	x		x	x		x
Little Blessings of Breaux Bridge	x	x	x	x		x	x		x
Owen's Developmental Learning Center	x	x	x	x		x	x		x
St. Martin Sunshine Playschool	x	x	x	x		x	x		x
Breaux Bridge Head Start Academy	x	x	x	x		x	x		x
Cecilia Head Start Academy	x	x	x	x		x	x		x
St. Martinville Early Head Start Academy	x	x							x
St. Martinville Head Start Academy			x						x
Breaux Bridge Primary				x					x
Cecilia Primary				x				x	x
Early Learning Center				x					x
Parks Primary				x				x	x
Stephensville Elementary				x					x

For more information, visit our Early Childhood Network page at www.saintmartinschools.org, or call Mrs. Brooke at 909-2815.
For performance ratings, visit www.louisianaschools.com.

St. Martin Parish Early Childhood Network
Putting the puzzle pieces together one child at a time.

Registration for 2022-2023 School Year

ENROLLMENT BEGINS MARCH 14, 2022
ONLINE REGISTRATION ONLY

To register for Pre-K visit the [Early Childhood Network](http://www.saintmartinschools.org) page at www.saintmartinschools.org

MUST BE 4 BY SEPTEMBER 30, 2022

Parks Primary
Breaux Bridge Primary
Cecilia Primary
Early Learning Center
Stephensville Elementary

For any questions or more information about Pre-K contact the Early Childhood Department at 337-909-2815 or by email brooke_richard@saintmartinschools.org

Documents Needed for Registration:

- Birth Certificate (child)
- Social Security Card (child)
- Immunization Record (child)
- Parent/Legal Guardian ID
- Current Lease/Rental Agreement, Mortgage statement, Property Tax Bill, OR Notarized Residency Affidavit (if you live with someone and bills are not under your name.)
- AND CURRENT Cable, Electric, Water, Gas, or Garbage Bill
- Proof of Income

Additional documents needed for EHS/HS are:

- Insurance/Medical Card
- W-2, 1040A/1040, SSI Award letter
- Head Start Application

To register for Head Start / Early Head Start, visit the [Early Childhood Network](http://www.saintmartinschools.org) page at www.saintmartinschools.org or contact the centers

Breaux Bridge Head Start Academy 909-2251
Cecilia Head Start Academy 909-2256
St. Martinville Early Head Start Academy 909-2265
St. Martinville Head Start Academy 909-2260

For more information, visit our Early Childhood Network page at www.saintmartinschools.org, or call Mrs. Brooke at 909-2815.
For performance ratings, visit www.louisianaschools.com.

Thank you!



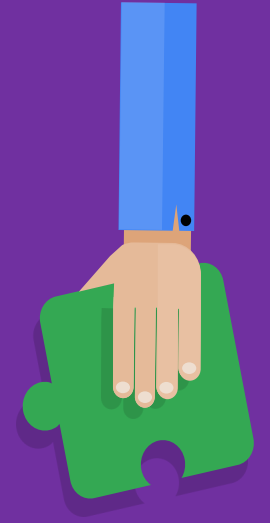


Agenda

- Vote in officers (Next meeting)
- Approve blueprint
- Approve bylaws
- Additional matters brought up in network meeting

Motion to Approve

- Bylaws
- Blueprint
- Additional Matters



Bylaws
Blueprint
Additional Matters

Officers



- **Chairperson:**
 - Preside over meetings
 - Understands bylaws
 - Note if quorum is present at each meeting
 - Conduct phone vote if quorum is not present
 - Call special meetings, when needed
 - May vote to break a tie
- **Vice Chairperson:**
 - Serve in place of chairperson in his/her absence
- **Secretary:**
 - Record all meeting minutes
 - Keep all official records

Vote

- Chairperson:
- Vice Chairperson:
- Secretary:

