

Midlothian ISD

Growth Management Committee

April 6, 2022





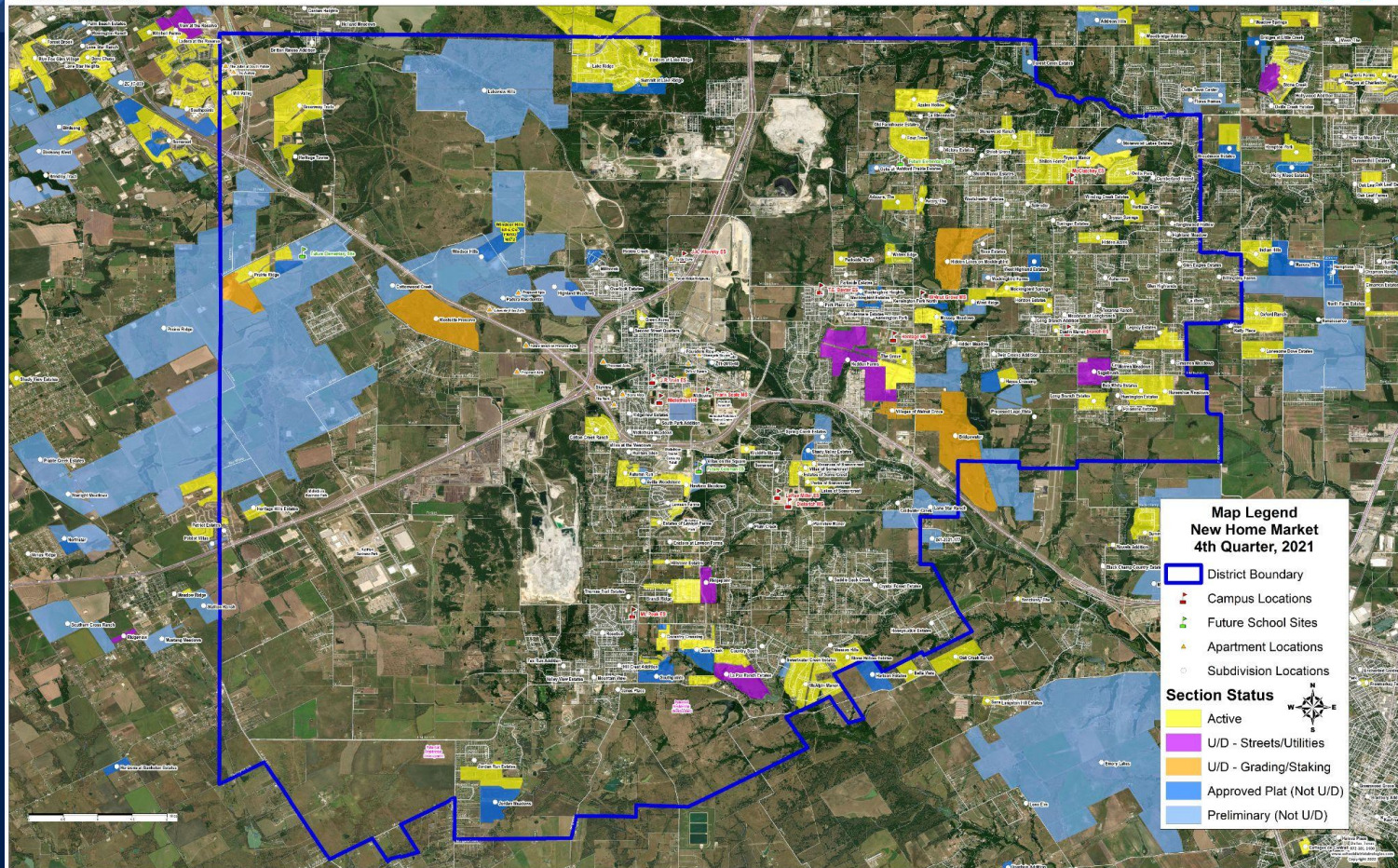
Welcome and Introductions

Dr. Jo Ann Fey

Dr. Ron Bland



Midlothian ISD Property
Jim Norris





Learning Environment

Shelle Blaylock

Midlothian ISD



Learning spaces that are versatile and support real world applications



In which environment would you learn best?



Option A



Option B



Physical Environment - School Building



1. First impressions matter to students and more
2. Ever-changing environments keep students engaged
3. Exterior learning spaces promote movement and alternative learning environments
4. Flexible, portable learning
5. Visually Stimulating



Physical Environment - Classrooms

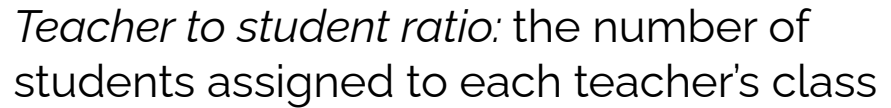
- Lighting
- Sound
- Space for Movement
- Order and Beauty
- Placement of programs
- Design Influenced by special programs









[illegible]

Impact of Lower Teacher to Student Ratio

1. Cities with greater number of students per teacher tend to have a low achievement
2. In grades K-3, smaller class sizes of no more than 18 students per teacher showed the greatest academic achievement levels.
3. When placed in smaller class sizes in primary grades, minority and low-income students showed the greatest gains.
4. Reducing class size has little positive effect without an adequate number of classrooms and without enough well-qualified teachers.
5. Professional development opportunities for teachers (like rigorous curriculum and professional development) help to improve the effect of reduced class sizes on the academic achievement of K-3 students.
6. Reduced class size initiatives tend to fail when the class size is set to 20 students or more or when it is implemented unevenly or for the short term.
7. The more years a student spends in reduced class sizes, the longer the benefits last.





Midlothian High School
Dr. Kalee McMullen



School Finance

Darin Kasper

Financing MISD Bonds

What are bonds? How long does it take to pay them off?

Bonds for school projects are very similar to a mortgage on a home. To finance construction projects, the district sells bonds to investors who will be paid principal and interest. Payout is limited by law to 40 years.



Financing MISD Bonds

How can bond money be used?

Proceeds from a bond issue can be used for the construction and renovation of facilities, the acquisition of land, and the purchase of as equipment, school busses, or vehicles for security purposes.



Financing MISD Bonds

Why are there multiple propositions in schools bonds?

Texas legislation requires school districts to have separate propositions for bonds that will fund construction or improvements for athletic facilities with 1,000 or more seats, natatoriums, performing arts facilities, recreational facilities, teacher housing, or technology improvements.



Financing MISD Bonds

Paying for schools

A school district's tax rate consists of two parts: 1) Maintenance and Operations (M&O) and 2) Debt Service (I&S). Maintenance and operations taxes fund the General Operating Fund, which pays for salaries, supplies, utilities, insurance, equipment, and the other costs of day-to-day operations.

The Debt Service tax pays off school bonds, somewhat like paying off the mortgage on a house.



Financing MISD Bonds

What is the difference between the M&O and the Debt Service tax rates?

M&O taxes are used for day-to-day operations; to pay for salaries, supplies, utilities, insurance, fuel, etc. Revenue from the Debt Service tax rate can be used only to retire bonds sold for specific purposes: construction, renovations, buses, portable buildings, land, technology, and the cost of issuing bonds.





Vision for the Future

Dr. Jo Ann Fey

Advanced Academics



Current Career & Technical Classes



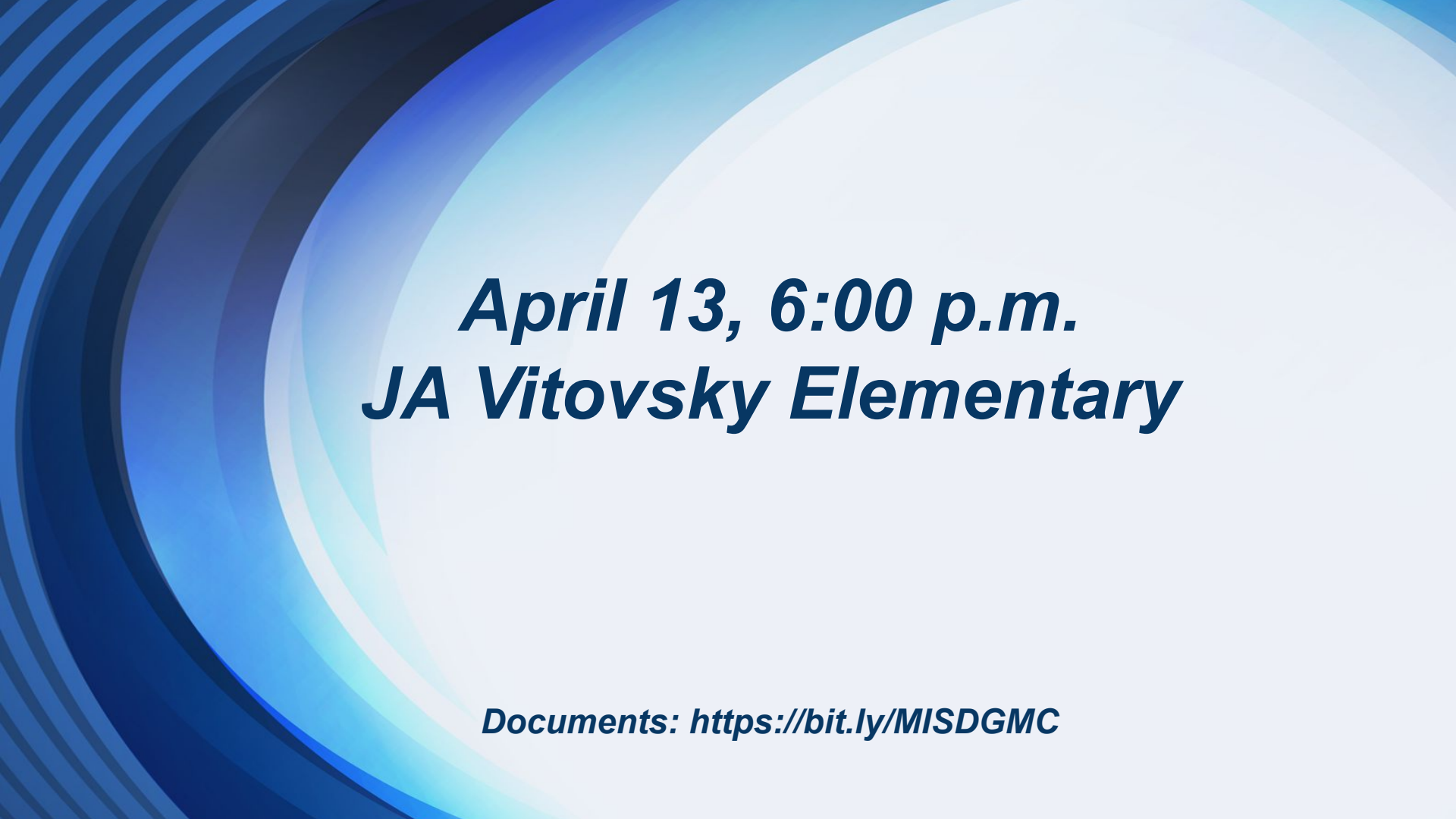
Potential Career and Technical Classes





Questions & Comments

Documents: <https://bit.ly/MISDGMC>



***April 13, 6:00 p.m.
JA Vitovsky Elementary***

Documents: <https://bit.ly/MISDGMC>