



# The Franklin Flash

## Franklin Elementary School

Habit #6 Together is Better

Principal – Elizabeth White

[ewhite@wausauschools.org](mailto:ewhite@wausauschools.org)

Secretary – Gina Lehman

[glehman@wausauschools.org](mailto:glehman@wausauschools.org)

1509 N 5th St Wausau WI 54403

Phone 715-261-0000 Fax 715-261-2144

Office Hours 8:30 AM - 3:30 PM

Student Arrival 8:15AM - 8:30AM

## Upcoming Events

April 4th - April 22nd - State Forward Testing  
(3rd, 4th, and 5th grade)

April 6th - Papa Murphy's Fundraiser

April 14th - Spring Music Concert 6:30PM

April 15th - No School

April 19th - PTO Meeting 5:30PM - 6:30PM

May 19th - Night at the Art Museum 5:00PM - 6:30PM

June 2nd - PTO Spring Fling Picnic 5:00PM - 7:00PM

Join us

### Wednesday

### April 6



### Wausau



25% of sales

from the ENTIRE day will  
go to

**FRANKLIN ELEMENTARY**

**SCHOOL**

so make it

a pizza night!

1800 Stewart Ave Wausau WI 54401

## WHAT IS YOUR INTERNET SPEED?



The North Central Wisconsin Regional Planning Commission, in partnership with Marathon County, is conducting a regional internet speed testing initiative.

Many communities that need broadband funding may miss out because the data showing their need isn't available. The goal of this project is to create an accurate regional map of where internet service is and is not available in Central Wisconsin and what speeds people are currently receiving.

Take the speed test today and encourage your friends, neighbors, and co-workers to do the same!

No Internet? Let us know! If you don't have internet available at your residence or business due to no service being available or other barriers, please call 715-261-1404 to report the address.

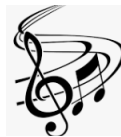


[www.ncwrpc.org/ncwrpc2021/broadband-speed-test/](http://www.ncwrpc.org/ncwrpc2021/broadband-speed-test/)

If you have no internet for any reason, please call 715-261-1404 to report the address.

## SPRING MUSIC CONCERT

Thursday, April 14th 6:30 PM  
Wausau East Auditorium



Shuttle Bus from Franklin to East

It will leave Franklin at 5:45 PM from Parent Lane (adjacent to Parent Parking Lot) The shuttle will return to Franklin after the performance.

Attention Hmong Parents: If you have questions or need explanation, please call Franklin Elementary School, 715-261- 0000 from 8:30 a.m. to 3:00 p.m. Yognejmuajlusnoogtxogdaimntawv no, Franklin Elementary School. Xovtojojog 715-261-0000.

Attention Spanish Parents: If you have questions or need explanation, please call Franklin Elementary School. 715-261-0000 from 8:30 a.m. to 3:00 p.m. Atención Padres: Si tiene una duda, pregunta o necesita una explicación, por favor llame a la escuela Franklin Elementary 715-261-0000 de 8:30am- 3:00pm.

The Wausau School District does not discriminate on the basis of race, age, color, religion, national origin, ancestry, creed, pregnancy, marital status, parental status, sexual orientation, sex (including transgender status, change of sex or gender identity), or physical, mental, emotional, or learning disability ("Protected Classes"). To receive paper copy of newsletter email [glehman@wausauschools.org](mailto:glehman@wausauschools.org)

# Report Cards

3rd quarter Report Cards can be viewed on Infinite Campus.

Parents can view their child's report card on your Infinite Campus Parent Portal account. Call the Franklin Main office at 715-261-0000 or email Gina Lehman at [glehman@wausauschools.org](mailto:glehman@wausauschools.org) if you need your activation code or help getting signed in to your parent portal.

## DIRECTIONS TO GET TO YOU CHILD'S GRADES

Go to the Wausau School District Website

Click on "Families" in the upper right hand corner

Click on "Parent Portal - Infinite Campus"





Click on "Infinite Campus Parent Portal"

Enter Parent Username and Password

Click "log in"

You can also download the Infinite Campus Parent Portal App



Wausau School District Report Card Key			Indicators for Academic Performance	Indicators for Characteristics of a Successful Learner
	<b>4</b>	Wow! You not only ride a bike on your own, but you can pop a wheelie, jump ramps, and perform other bike stunts.	<b><u>Exceeding the Standard</u></b> The student <b><u>consistently exceeds</u></b> grade level standards and expectations. Performance is characterized by <b><u>self-motivation</u></b> and the ability to apply the skills with <b><u>consistent accuracy, independence and a high-level of quality.</u></b>	<b><u>Exceeding Expectations</u></b> Student independently exceeds expectations through role modeling and leadership.
	<b>3</b>	Congratulations! You are successfully riding a bike by yourself.	<b><u>Meeting the Standard</u></b> The student <b><u>consistently meets</u></b> grade level standards and expectations. Performance is characterized by the ability to apply skills with <b><u>accuracy, independence, and quality</u></b> with <b><u>minimal assistance.</u></b> This is an excellent level of achievement, and one that a student should be working toward as <b><u>developmentally appropriate.</u></b>	<b><u>Meeting Expectations</u></b> Student consistently demonstrates skill.
	<b>2</b>	Almost there! You are pedaling well and staying upright as long as someone is holding on and giving you a little push.	<b><u>Progressing Toward the Standard</u></b> The student is <b><u>progressing toward</u></b> grade level standards and expectations. <b><u>Performance varies</u></b> in consistency with regard to accuracy and quality. Student <b><u>requires additional practice and support.</u></b>	<b><u>Progression Toward Expectations</u></b> Student demonstrates skill some of the time with support.
	<b>1</b>	Keep trying! You are riding a bike, but using training wheels.	<b><u>Not Meeting the Standard</u></b> The student is <b><u>not meeting</u></b> grade level standards and expectations. <b><u>Additional instruction, practice, and support is necessary</u></b> to move toward grade level standards and expectations.	<b><u>Not Meeting Expectations</u></b> Student requires ongoing intervention and support.

# GET THE FACTS

## Wausau School District Referendum April 5, 2022

On **Tuesday, April 5, 2022**, Wausau School District residents will vote on a referendum question. If approved, it would allow the district to address several of its critical long-term facility needs, which span three categories:

- **SAFETY & SECURITY**
- **FACILITY SYSTEMS & DEFERRED MAINTENANCE**
- **RIGHT-SIZED LEARNING SPACES**

The solution the Board of Education is presenting to voters on April 5 has been created based on the input and feedback of our community. This effort included online surveys for community and staff members, three community engagement sessions, staff listening sessions at all schools, and engagement on social media.



## DISTRICT NEEDS?

### 1 SAFETY & SECURITY

While our facilities have served generations of district residents well, most of our buildings were constructed before newer school security standards were established. Our schools are safe. However, some of them require enhanced entrance security upgrades and modern emergency systems, such as updated fire alarms, mass notification systems, and video surveillance.

THE PROPOSED REFERENDUM INCORPORATES FUNDS FOR:

- More secure entryways
- Updated fire alarms, clocks, and PA systems
- Improved student drop off, pick up, and parking at some of our schools
- Updates for accessibility (*ADA compliance*)

### 2 FACILITY SYSTEMS & DEFERRED MAINTENANCE

While our maintenance staff has made the most of the district's maintenance funding, facility systems in several of our buildings have outlived their useful lives. This includes inefficient and outdated heating and cooling systems in some buildings. In other buildings, systems are obsolete and no longer supported by their manufacturer.

THE APRIL 2022 REFERENDUM INCLUDES FUNDS FOR:

- HVAC updates and repairs
- More efficient lighting
- Roof replacements and repairs
- Improved temperature controls
- Electrical and technological updates
- Casework in classrooms

### 3 RIGHT-SIZING LEARNING SPACES

Education has changed significantly since many of our school buildings were designed decades ago. While classrooms in our schools generally function well for traditional instruction, they are not aligned with the kinds of flexible environments found in colleges, universities, and workplaces today.

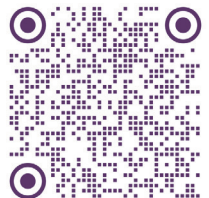
THE APRIL 2022 REFERENDUM INCLUDES FUNDS TO RIGHT-SIZE CLASSROOM SPACES & ADD MORE SPACE AT:

**Horace Mann Middle School**  
**John Muir Middle School**  
**Riverview Elementary School**  
**South Mountain Elementary School**  
**Stettin Elementary School**  
**Wausau Area Montessori Charter School**  
**Wausau West High School**

## PROPERTY TAX IMPACT

An approved referendum would have an estimated property tax decrease of \$0.43 on every \$1,000 of property value in the school district. The owner of a home valued at \$200,000 would see an annual tax reduction of about \$86.

**FORWARD**  
**TOGETHER**



Learn more at  
[wausau.referendumfacts.org](https://wausau.referendumfacts.org)



# Stay, learn and play!

## G2M Community Connections

Extend your Summer Learning with Community Connections! Have a FREE lunch and join in the fun (Monday - Thursday, 1:00 - 4:00 PM) with Community partners - like 4-H, Boys and Girls Club, Monk Botanical Gardens and much more!  
G2M = Growing Great minds!

**Registration deadline is April 15, 2022**



**Join our 6 week program June 8- July 21!**

For students in K-Grade 4, classes are held at GD Jones, Hawthorn Hills, Lincoln, Riverview and Thomas Jefferson Elementary schools!

For more information and to register on-line at:  
<https://tinyurl.com/wsdsummer2022>

Cost for the 6 week program is \$40/student; \$100/family; For students economically disadvantaged, the reduced cost is \$10/student.



# INFÓRMESE

## Referéndum del Distrito Escolar de Wausau 5 de abril de 2022

El **martes 5 de abril**, los residentes del Distrito Escolar de Wausau votarán sobre una pregunta del referéndum. Si se aprueba, permitiría al distrito abordar varias de sus necesidades críticas de instalaciones a largo plazo, que abarcan tres categorías:

- **SEGURIDAD Y PROTECCIÓN**
- **SISTEMAS DE INSTALACIONES Y MANTENIMIENTO DIFERIDO**
- **ADAPTACIÓN DEL TAMAÑO DE LOS ESPACIOS DE APRENDIZAJE**

La solución que la Junta Educativa presentará a los votantes el 5 de abril ha sido creada en base a los aportes y comentarios de nuestra comunidad. Este esfuerzo incluyó encuestas en línea para la comunidad y personal del distrito, tres sesiones de participación comunitaria, sesiones de escucha del personal en todas las escuelas, y participación en las redes sociales.



## ¿EL DISTRITO NECESITA?

### 1 SEGURIDAD Y PROTECCIÓN

Aunque nuestras instalaciones han servido bien a generaciones de residentes del distrito, la mayoría de nuestros edificios fueron construidos antes de que se establecieran los nuevos estándares de seguridad escolar. Nuestras escuelas son seguras. Sin embargo, algunas de ellas requieren mejoras en la seguridad de la entrada y sistemas de emergencia modernos, como actualización de alarmas contra incendios, sistemas de notificación masiva y videovigilancia.

EL REFERÉNDUM PROPUESTO INCORPORA FONDOS PARA:

- Entradas más seguras
- Alarmas contra incendios, relojes y sistemas de megafonía actualizados
- Mejoras para dejar, recoger y estacionar a los estudiantes en algunas de nuestras escuelas
- Actualizaciones para accesibilidad (cumplimiento con ADA)

### 2 SISTEMAS DE INSTALACIONES Y NECESIDADES DE MANTENIMIENTO DIFERIDO

Mientras nuestro personal de mantenimiento ha aprovechado al máximo los fondos de mantenimiento del distrito, los sistemas de las instalaciones en varios de nuestros edificios han superado su vida útil. Esto incluye sistemas de calefacción y refrigeración ineficientes y obsoletos en algunos edificios. En otros edificios, los sistemas están obsoletos y ya no son compatibles con su fabricante.

EL REFERÉNDUM DE ABRIL DE 2022 INCLUYE FONDOS PARA:

- Actualizaciones y reparaciones de HVAC
- Iluminación más eficiente
- Reemplazos y reparaciones de techos
- Controles de temperatura mejorados
- Actualizaciones eléctricas y tecnológicas
- Equipamiento de las aulas

### 3 ADAPTACIÓN DEL TAMAÑO DE LOS ESPACIOS DE APRENDIZAJE

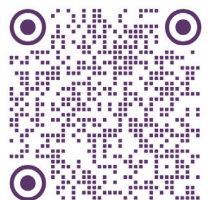
Nuestros edificios escolares fueron diseñados hace décadas, la educación ha cambiado significativamente desde entonces. Si bien las aulas de nuestras escuelas generalmente funcionan bien para la instrucción tradicional, no están alineadas con los tipos de entornos flexibles que se encuentran en las universidades y lugares de trabajo de hoy.

EL REFERÉNDUM DE ABRIL DE 2022 INCLUYE FONDOS PARA ADECUAR LOS ESPACIOS DE LAS AULAS Y AGREGAR MÁS ESPACIO EN:

**Horace Mann Middle School**  
**John Muir Middle School**  
**Riverview Elementary School**  
**South Mountain Elementary School**  
**Stettin Elementary School**  
**Wausau Area Montessori Charter School**  
**Wausau West High School**

## IMPACTO DEL IMPUESTO A LA PROPIEDAD

Un referéndum aprobado tendría una disminución estimada del impuesto a la propiedad de \$0.43 por cada \$1,000 del valor de la propiedad en el distrito escolar. El propietario de una casa valorada en \$200,000 vería una reducción anual de impuestos de alrededor de \$86.



Obtenga más información en  
[wausau.referendumfacts.org](http://wausau.referendumfacts.org)

# KEV MUAB COV LUS TSEEB

## Wausau Txoos Tsevkawm Kev Sau Ntawv Thov Kev Pab Uas Pejxeem Yuav Tau Tawm Suab Saib Puas Pom Zoo Plaub Hlis 5, 2022

Hnub **Tuesday, April 5, 2022**, Wausau Txoos Tsevkawm cov pejxeem yuav tau tawm suab xaiv qhov kev sau ntawv thov kev pab lo lus nug. Yog tias pom zoo, nws yuav tso cai rau lub txoos tsevkawm los hais txog ob peb yam ntawm nws tej vajtse tseemceeb uas yuavtsum tau muaj rau yav ntev tom ntej, uas muaj li peb yam:

- **KEV NYAB XEEB & KEV RUAJ NREG**
- **TEJ CHAW VAJTSE & NCUA KEV TU KHO KOM NTEV**
- **TEJ CHAW KAWM UAS DAV HAUM**

Qhov kev daws qhov teebmeem uas Pawg Txwjlaug ntawm Txoj Kev Kawm tab tom nthuav tawm rau cov neeg xaiv rau lub Plaub Hlis 5 yog tau raug tsim los raws li tej ncaujlus thiab tej tswvyim ntawm peb lub zej zog. Txoj kev siv zog no yog xam tagnrho tej kev sojntsum online rau lub zej zog thiab cov kws haujlwm, peb yam uas zej zog raus tes ua, cov kws haujlwm tej kev mus mloog rau hauv tagnrho cov tsevkawm, thiab kev raus tes ua rau ntawm cov kev tshaj xovxwm



## TXOOS TSEVKAWM TEJ YAM UAS YUAVTSUM TAU MUAJ

### 1 KEV NYAB XEEB & KEV RUAJ NREG

Txawm hais tias peb tej vajtse tau pab ntau tiam neeg rau cov neeg nyob ntawm ib cheeb tsam zoo, feem ntau ntawm peb cov tsev yog tau tsim ua ntej txoj kev tsim cov qauv tshiab uas hais txog tsevkawm txoj kev ruaj nreg. Peb cov tsevkawm muaj kev nyabxees. Txawm li cas los xij, qee lub yuavtsum tau kho tej chaw nkag los kom ruaj nreg raws li yam tshiab thiab tej yam kev ua tshiab thaum ti tes ti taw, xws li kho tej tswb hluav taws tshiab, tej kev tshaj qhia tawm rau sawvdaws paub, thiab tej koob thau duab caws cia.

QHOV KEV THOV COV NYIAJ TXIAG UAS PEJXEEM YUAV TAU XAIV SAIB PUAS POM ZOO YOG SIV RAU:

- Kom cov chaw nkag los muaj kev ruaj nreg dua
- Hloov tej tswb hluav taws, tej moos, thiab tej pajtaub (PA systems) kom haum li niaj hnub nyiam no
- Kho tej chaw tso tubkawm tawm, tuaj tos, thiab chaw nres tsheb ntawm peb qee lub tsevkawm kom zoo tuaj
- Kev hloov tshiab rau tej kev nkag los (ua raws li ADA)

### 2 TEJ CHAW VAJTSE & NCUA KEV TU KHO KOM NTEV

Txawm hais tias peb cov neeg ua haujlwm tu vaj tse ua tau ntau tshaj plaws los ntawm kev siv koog tsev qhov nyiaj los tu txuag vaj tse, tej twj vaj tse ntawm peb ib co tsev tau nyob ntev tshaj qhov lawv zoo siv lawm. Qhov no xam tagnrho tej cua sov thiab cua no hauv qee lub tsev ua haujlwm tsis zoo thiab qub dhau lawm. Nyob hauv lwm cov tsev, tej twj yog tsis siv lawm thiab tsis muaj kev txhawb nqa los ntawm lub chaw tsim cov twj no.

LUB PLAUB HLIS 2022 QHOV KEV THOV UAS PEJXEEM YUAV TAU TAWM SUAB XAIV XAM TAGNRHO COV NYIAJ RAU:

- HVAC tej kev hloov tshiab thiab tej kev kho
- Cov teeb uas ua haujlwm zoo dua
- Cov kev hloov thiab cov kev kho ru tsev
- Kev kho cov twj ua kom sov thiab txias zoo tuaj
- Kev hloov kho tej teeb thiab tej twj kom tshiab haum rau niaj hnub no
- Kev saibxyuas ib tus neeg twg hauv cov chavkawm

### 3 TEJ CHAW KAWM UAS DAV HAUM

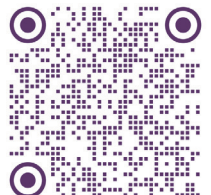
Txoj kev kawm tau hloov pauv ntau kawg txij thaum peb cov tsevkawm ntau lub tau tsim thaum ntau caum xyoo dhau los. Txawm tias cov chavkawm hauv peb cov tsevkawm feem ntau ua haujlwm zoo rau txoj kev qhia uas ib txwm ua, lawv tsis haum raws li tej chaw uas hloov kom haum raws li nyiam uas muaj nyob hauv cov colleges, universities, thiab tej chaw ua haujlwm niaj hnub nyiam no

LUB PLAUB HLIS 2022 QHOV KEV THOV UAS PEJXEEM YUAV TAU TAWM SUAB XAIV XAM TAGNRHO TEJ NYIAJ RAU KEV UA KOM COV CHAWKAWM LOJ-HAUM THIAB NTXIV COV CHAW KOM NTAU RAU NTAWM:

- Horace Mann Middle School
- John Muir Middle School
- Riverview Elementary School
- South Mountain Elementary School
- Stettin Elementary School
- Wausau Area Montessori Charter School
- Wausau West High School

### KEV YUAV RAUG RAU TEJ SE VAJTSE

Qhov kev thov uas pejxeem yuav tau tawm suab xaiv uas tau pom zoo rau yuav muaj qhov txo se vaj tse qis kwvyees li \$0.43 rau \$1,000 twg ntawm tus nqi lub tsev uas nyob hauv lub txoos tsevkawm. Tus tswv ntawm lub tsev uas tus nqi \$200,000 yuav pom qhov nqi se ib xyoos twg txo qis kwvyees li \$86.



Kawm kom paub ntau ntxiv ntawm  
[wausau.referendumfacts.org](http://wausau.referendumfacts.org)