



Long Range Facilities Master Plan Community Leadership Committee

Meeting – May 21, 2019



1. Welcome, Introductions, & Meeting Objectives
2. Why We Need a Long-Range Facilities Master Plan
3. Purpose of the Community Leadership Committee (CLC)
4. Long Range Facilities Master Plan (LRFMP) Overview
5. VUSD Draft Guiding Principles for Input
6. Educational Specifications
7. Review LRFMP Process
8. CLC Meeting #2
9. Q & A

Our Master Planning Support Team



Dr. Roger Rice
Superintendent

Betsy George
Assistant Superintendent

Dave Marshall
Director of Facilities Services Department

Terri Allison
Facilities Planner



Marco Eacrett
Partner



Alex Parslow
Partner/Principal in Charge



Hal Hart
Principal

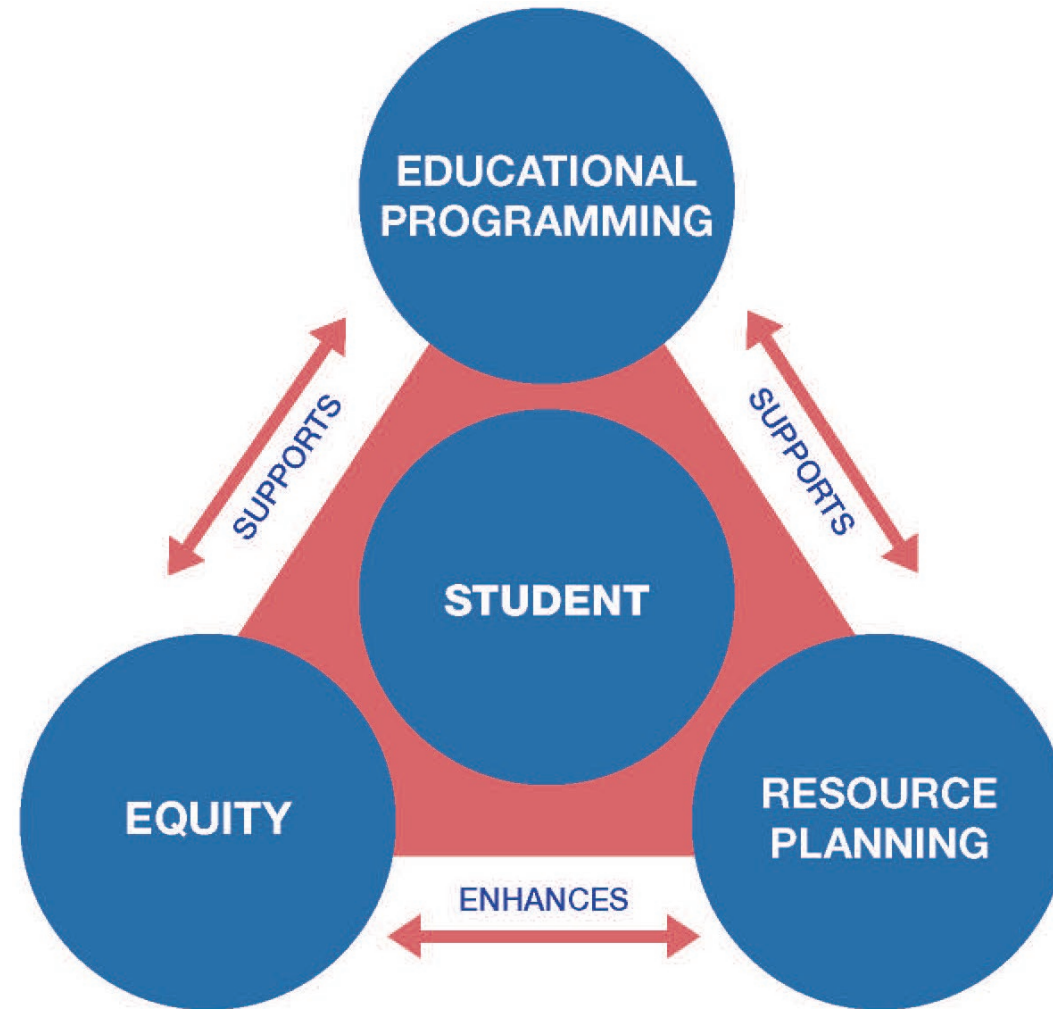


Cameron Robertson
Planner



For the future of every student

Why We Need a Facility Master Plan



Why We Need a Facility Master Plan

Last Bond was 1997 - \$81 million Measure M

New and Modernized Facilities:

1. Foothill Technology High School
2. Citrus Glen Elementary
3. Sunset School
4. Portola Elementary

Why We Need a Facility Master Plan



District Sites:

ELEMENTARY SCHOOLS

- | | |
|---------------------|-------------------------|
| 1. Blanche Reynolds | 10. Mound |
| 2. Citrus Glen | 11. Pierpont |
| 3. Elmhurst | 12. Poinsettia |
| 4. E. P. Foster | 13. Portola |
| 5. Junamaria | 14. Saticoy (ATLAS) |
| 6. Junipero Serra | 15. Sheridan Way |
| 7. Lincoln | 16. Sunset School (K-8) |
| 8. Loma Vista | 17. Will Rogers |
| 9. Montalvo | |

MIDDLE SCHOOLS (6-8)

- 18. Anacapa
- 19. Balboa
- 20. Cabrillo
- 21. De Anza Academy of Technology & the Arts

HIGH SCHOOLS (9-12)

- 22. Buena
- 23. Foothill Technology
- 24. Ventura
- 25. Pacific
- 26. El Camino

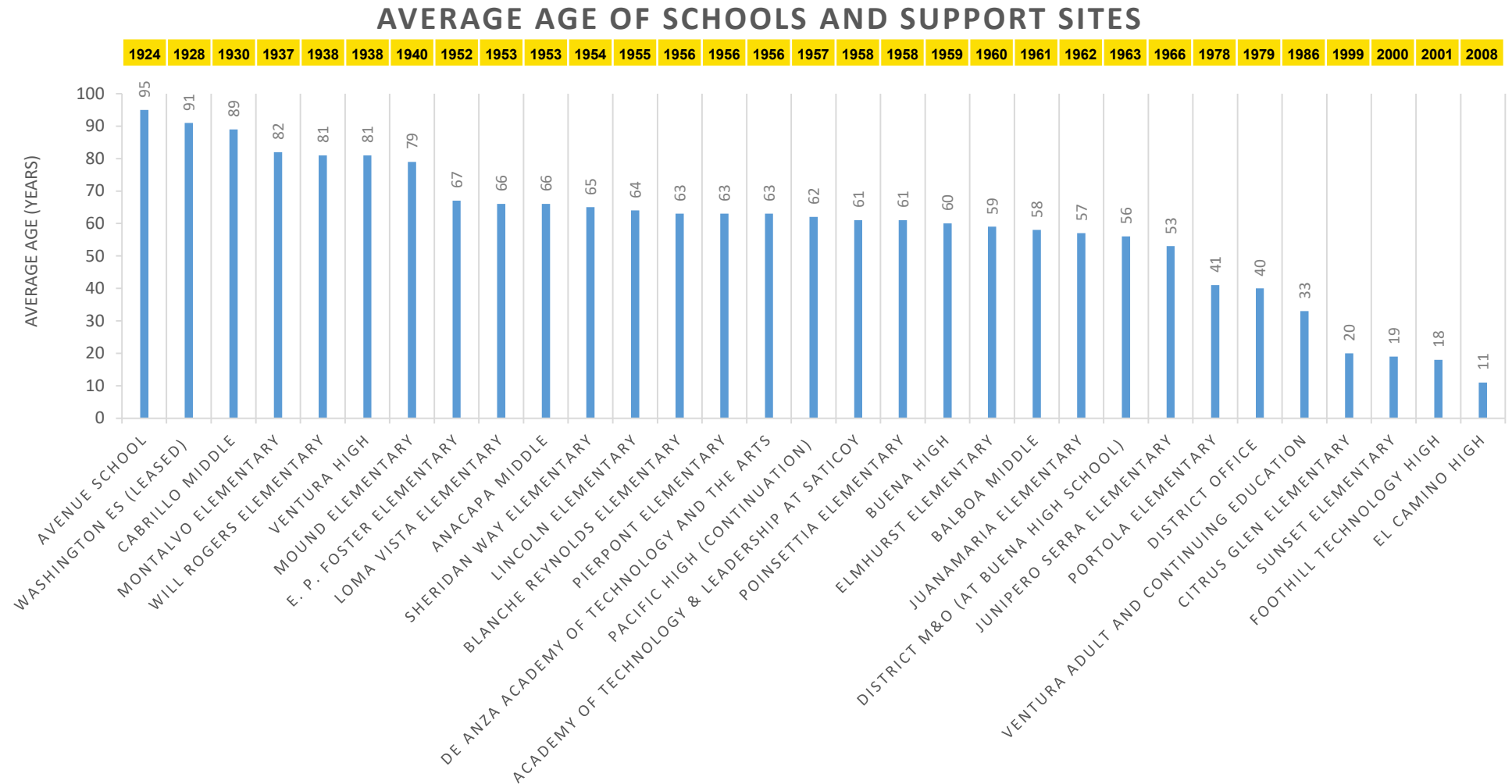
ALTERNATIVE EDUCATION

- 27. Ventura Adult and Continuing Education / Ventura Business Campus
- 28. Project Secure

DISTRICT SITES

- 29. Education Services Center
- 30. Facilities Support Department
- 31. Transportation Services Department
- 32. Washington School
- 33. Avenue School
- 34. E.P. Foster Estate
- 35. Harry Lyon Park
- 36. Fraser Ranch
- 37. Jewett Estate
- 38. Penfield School Property
- 39. Sudden Estate

Why We Need a Facility Master Plan



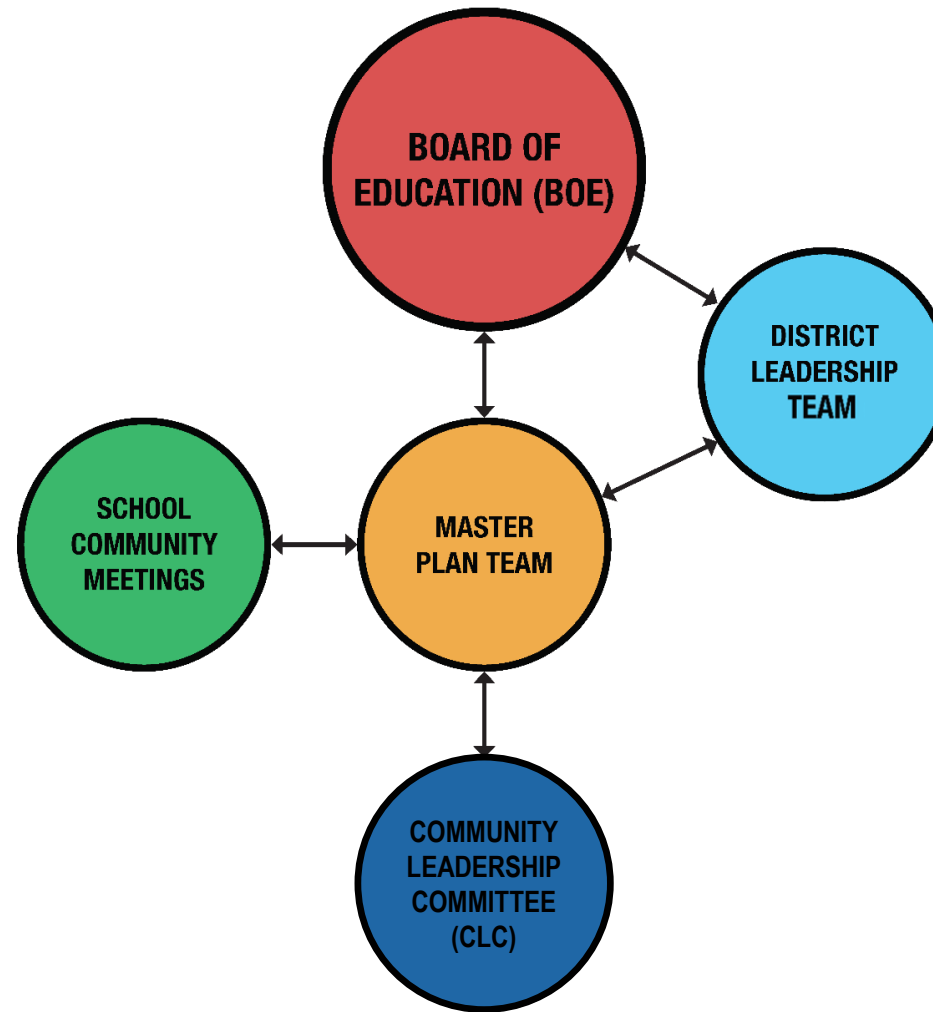
Community Leadership Committee (CLC)

- Roles & Responsibilities:
 - Identifies the community's priorities
 - Represents stakeholders
 - Contributes ideas regarding the development of the LRFMP
 - Provides feedback to the District Leadership Team
 - Communicates to the community about the LRFMP and its findings

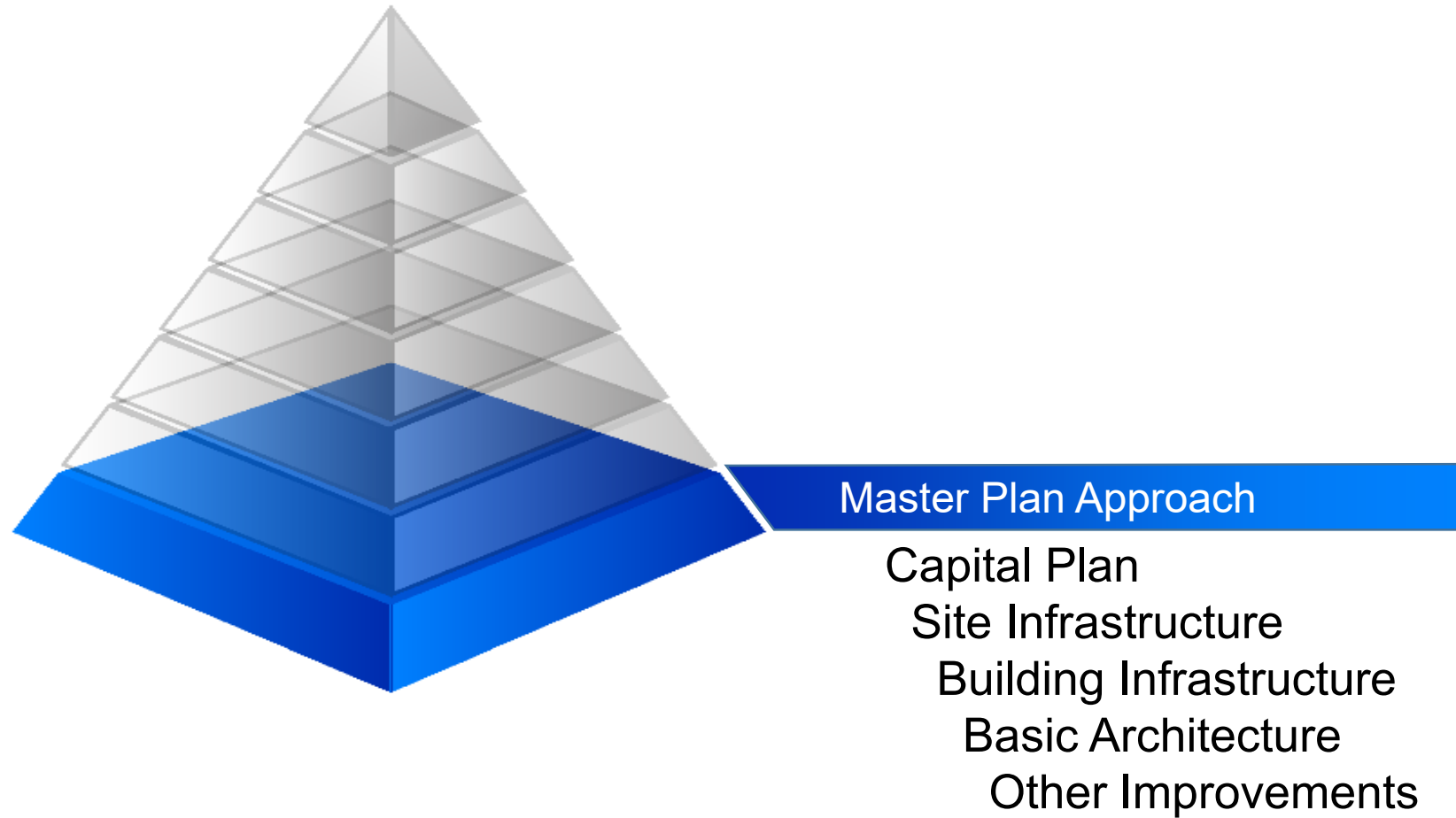


- Structure:
 - Comprised of approximately 24 members
 - Includes local leaders, parents, teachers, district and site staff, business/community members, and students
 - Reflects the geographic and demographic diversity of the District

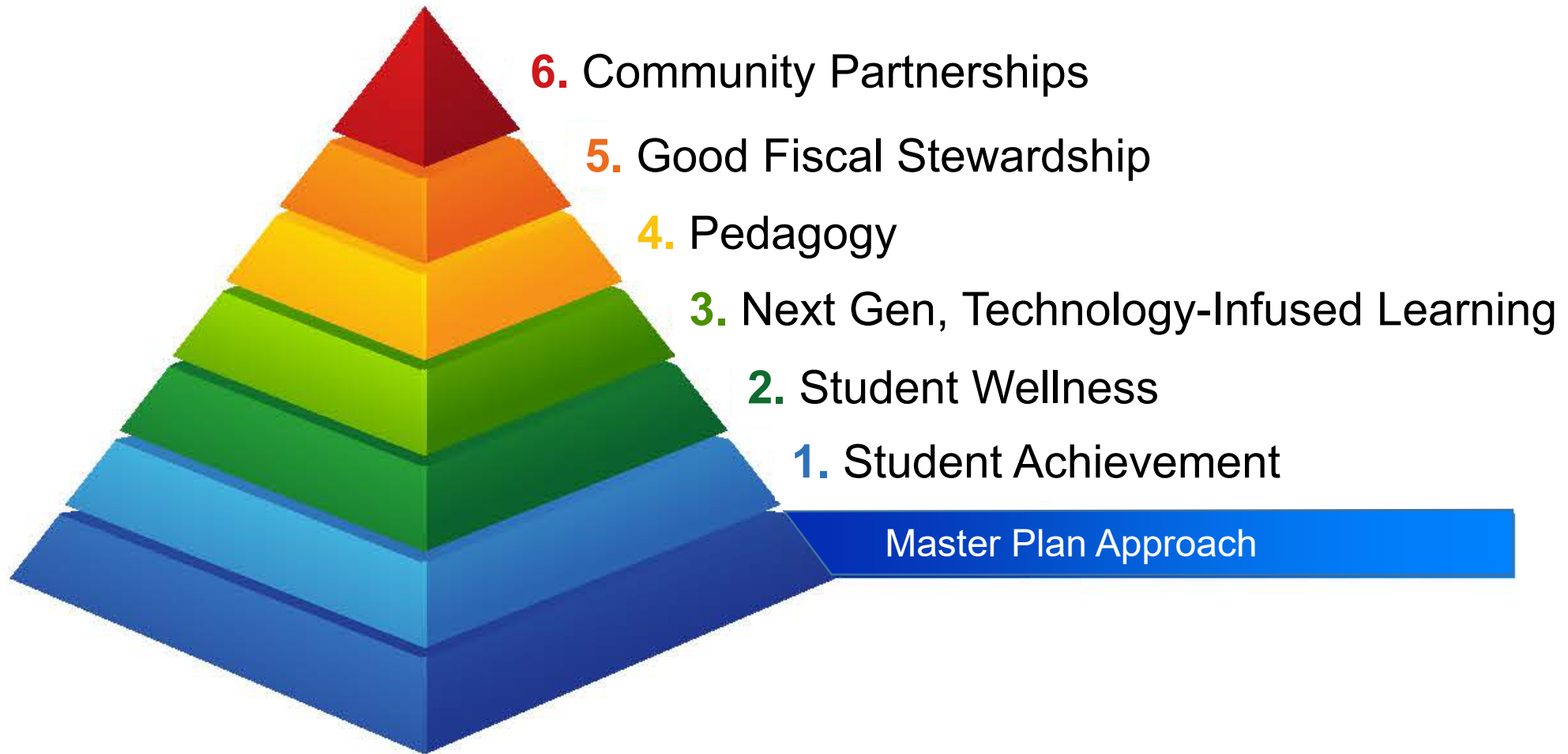
Facility Master Plan Flow of Information



Traditional Master Planning



Our Master Plan Approach

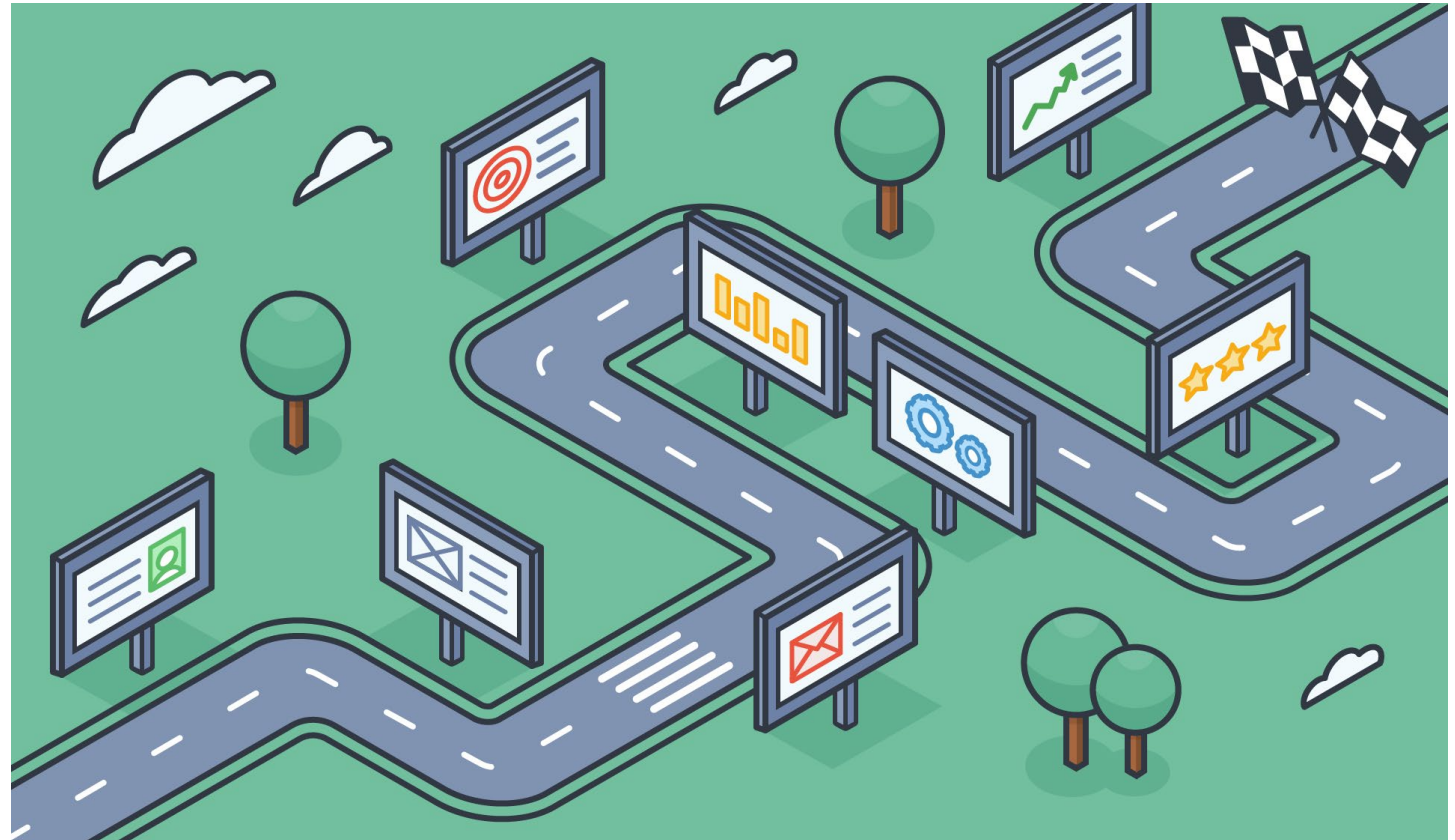


We Take a Holistic Approach to Planning



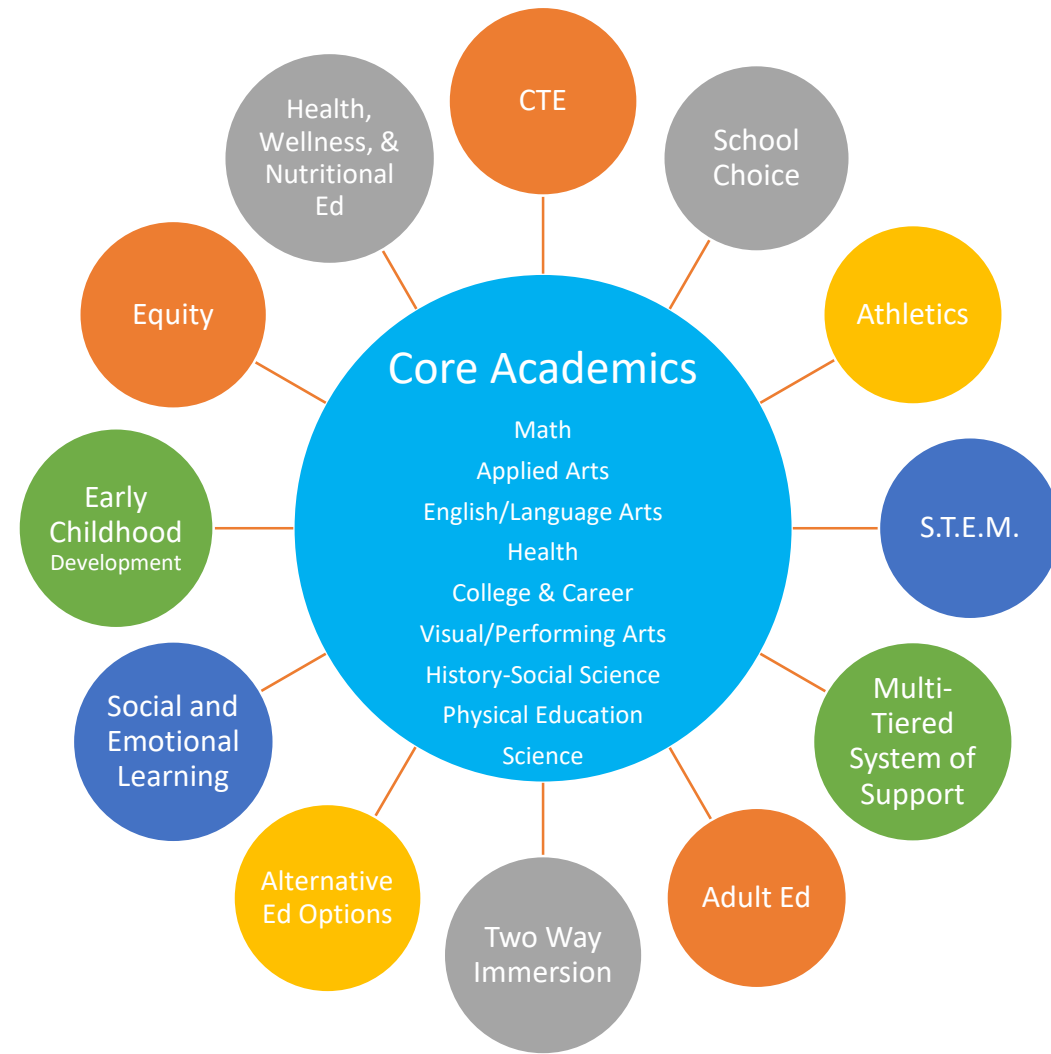
Facility Master Plan Goals – Our Roadmap

1. Needs surrounding District educational goals
2. Facilities supporting curriculum
3. Infrastructure needs at each site
4. Rough order of magnitude costs
5. Priority projects
6. Basis for priorities/decisions
7. Funding opportunities



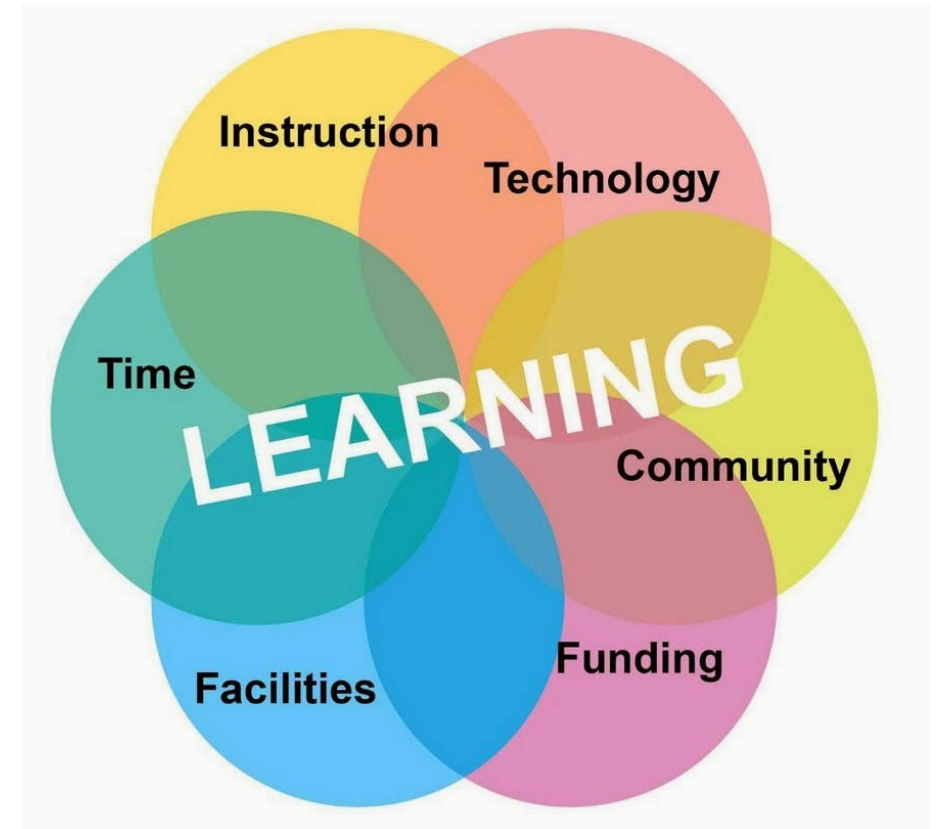
Education Specifications Process

- Define educational hub
- Identify current state
- Identify “ideal state”
- Prioritize education needs
- Explore design features
- Guiding Principles (anchors) for the LRFMP



“Ideal State” Themes

- Flexible, adaptable, inviting learning spaces
- Attractive schools (Wow factor!)
- Sustainability
- Way-finding signage
- Students come for the experience
- Features with functions
- Equity
- Scream the theme
- Marquee space
- Universal safety systems
- Parking and traffic flow



VUSD Guiding Principles - DRAFT

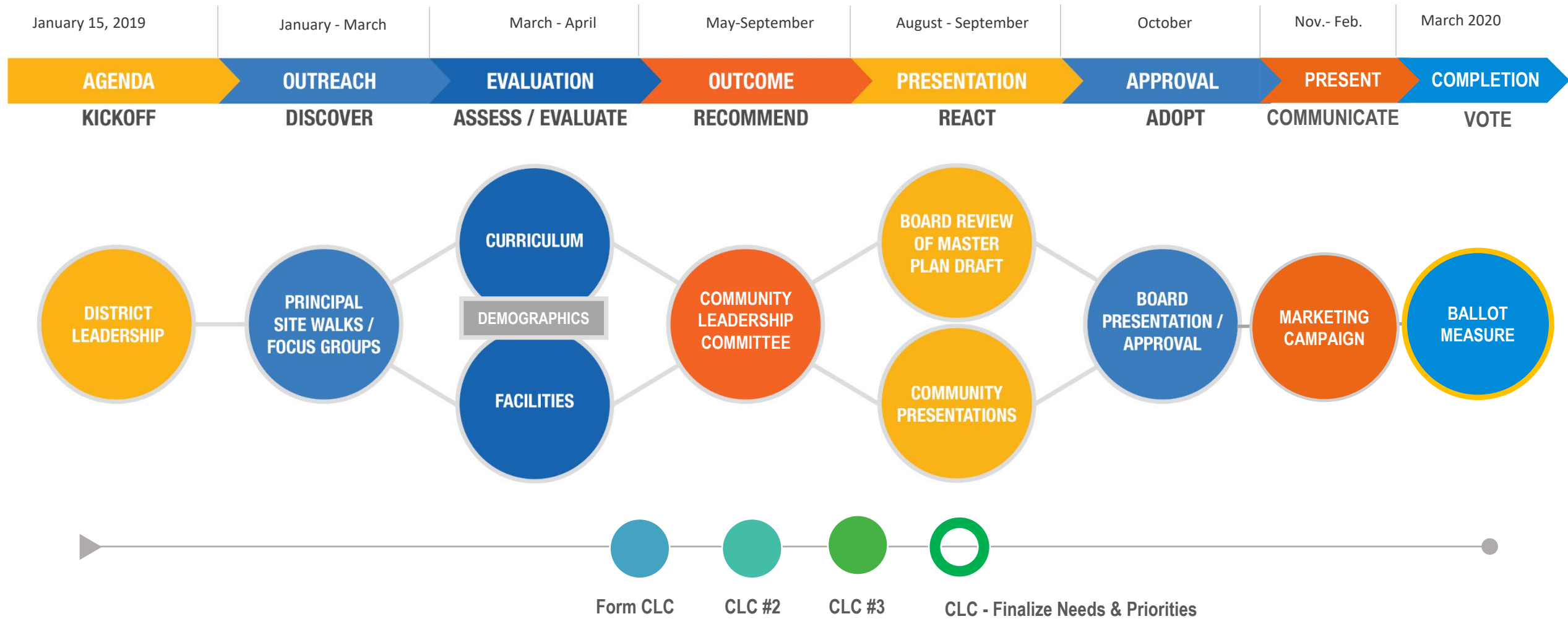
- **Student Learning:** Invest in facility and infrastructure that are student centric and demonstrate a forward thinking design.
- **Innovation and Inspiration:** Provide inviting facilities that promote innovation and flexible teaching.
- **Safety and Security:** Ensure a safe, inclusive and accessible learning environment for every student in every school.
- **Indoor/Outdoor Spaces:** Take advantage of indoor/outdoor spaces to expand learning opportunities that promote positive student outcomes.
- **Community Engagement:** Consider the spectrum of family involvement and educational partnerships to maximize the use of space in neighborhood schools.
- **Historical Perspective:** Honor the historical and cultural significance of buildings, landscapes and other important symbols that reflect the unique character of the Ventura community.

Engagement with Schools & Community

- **Outreach**
 - **Listening**
 - Visiting each site and key department:
 - Principal
 - Focus Group Meetings
 - Community Leadership Committee (CLC)
 - **Heard**
 - **Virtual or in-person meetings with:**
 - Principals at each site and Focus Groups
 - Community Leadership Committee (CLC)
 - **Present**
 - **Community Meetings:**
 - Principal
 - Teachers & Classified Staff
 - Community Leadership Committee (CLC)
 - Community/ PTA / Foundation/ Parents



Timeline



- Next CLC Meeting Date and Time
- Potential Agenda Items for CLC Mtg. #2
 - What We've Heard
 - Prepare for Community Meetings
 - Educational Specification Update
 - School Funding Process & Overview
 - Break-out Groups

Questions and Feedback

