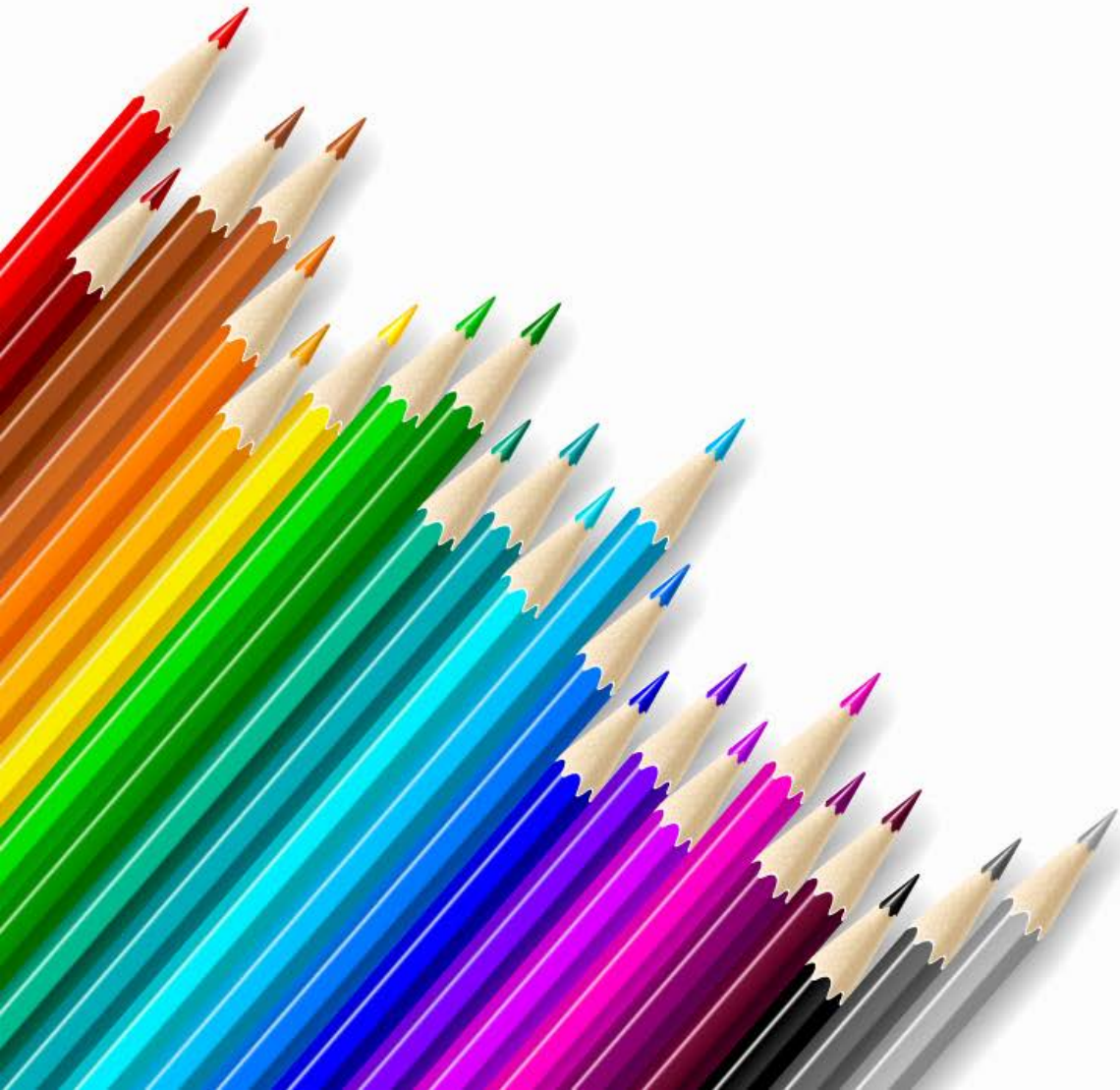


# Standards-Based Report Cards






"Why...would anyone want to change current grading practices?"

"The answer is quite simple: grades are so imprecise that they are almost meaningless."

--Robert Marzano



“Grading as it has been done traditionally promotes a culture of point accumulation not learning, encourages competition not collaboration, often focuses on activities not results...and only involves assessment OF learning because everything students do gets a score and every score ends up in the grade book.”

---Ken O'Connor



# Principles of Grading


- Reporting should be based on clearly specified learning goals and performance standards
- Evidence used for grading should be valid
- Grading should be based on established criteria, not on arbitrary norms
- Not everything should be included in grades
- Avoid grading based on averages
- Focus on achievement and report other factors separately



# What is a Standards-Based Report Card?

It reports a child's progress toward meeting state and district standards in areas of content and performance. It gives specific information on a student's level of proficiency on a given standard.





# Standards-Based Reporting System

The purpose of the reporting system is to report separately:

- Student achievement based on content standards with end of the year expectations
- Student social development and work habits



# Standards-Based Grading


- A focus on mastering content “standards” instead of accumulating points
- A report of what students know and are able to do
- A balance of formative and summative assessments (mounting evidence)
- A record keeping system that informs instruction
- A system that encourages student reflection and responsibility for learning



# Benefits of a Standards-Based Reporting System

- Measure what a student should know and be able to do by the end of each grade in each learning area.
- Identify the concepts and skills in each learning area based on these standards
- Indicate what skills students have mastered, as well as their strengths and areas for growth.
- Progress will be reported for each of the grade level standards identified rather than a single grade for each subject area.
- Students, parents, and teachers work together toward shared goals to ensure that students make progress each year.
- All teachers across the District will have the same expectations and common understandings about learning targets at each grade level and be able to build student





# What is Not Included in Standards- Based Grades:

- Effort
- Attendance
- Participation
- Citizenship
- Attitude
- Extra Credit
- Behavior
- Group Work
- Homework
- Anything that doesn't relate to a standard



## Student's Name: John Smith

Question	Standard		Question	Standard	
1	5.OA.1	Correct	11	5.NBT.2	Correct
2	5.OA.2	Correct	12	5.NBT.5	Correct
3	5.NBT.5	Correct	13	5.OA.2	Correct
4	5.NBT.6	Incorrect	14	5.OA.1	Correct
5	5.OA.2	Correct	15	5.NBT.1	Correct
6	5.OA.2	Correct	16	5.OA.6	Correct
7	5.NBT.6	Correct	17	5.OA.1	Correct
8	5.NBT.1	Correct	18	5.NBT.1	Correct
9	5.NBT.6	Incorrect	19	5.NBT.6	Incorrect
10	5.OA.6	Correct	20	5.OA.1	Correct

**Student Test Average 85% - B**



## Student's Name: John Smith

Question	Standard		Question	Standard	
1	5.OA.1	Correct	11	5.NBT.2	Correct
2	5.OA.2	Correct	12	5.NBT.5	Correct
3	5.NBT.5	Correct	13	5.OA.2	Correct
4	5.NBT.6	Incorrect	14	5.OA.1	Correct
5	5.OA.2	Correct	15	5.NBT.1	Correct
6	5.OA.2	Correct	16	5.OA.6	Correct
7	5.NBT.6	Correct	17	5.OA.1	Correct
8	5.NBT.1	Correct	18	5.NBT.1	Correct
9	5.NBT.6	Incorrect	19	5.NBT.6	Incorrect
10	5.OA.6	Correct	20	5.OA.1	Correct

### Standards-Based Approach

John is meeting expectations for all standards except 5.NBT.6. John needs additional instruction and practice to be meeting expectations on standard 5.NBT.6

# Needs Support





# Approaching Standards





# Meets Standards



# Exceeds Standards





# How do teachers determine every child's progress level?

The standard based report card progress levels are based on student performance on specific tasks and assessments, which are tied to the learning standards. Teachers will use a rubric to determine each child's performance. Comprehensive rubrics are used to describe the indicator levels on the report card and will be available online at the district website.

Remember...  
it doesn't matter  
where the child  
starts, it's where he  
or she finishes!

