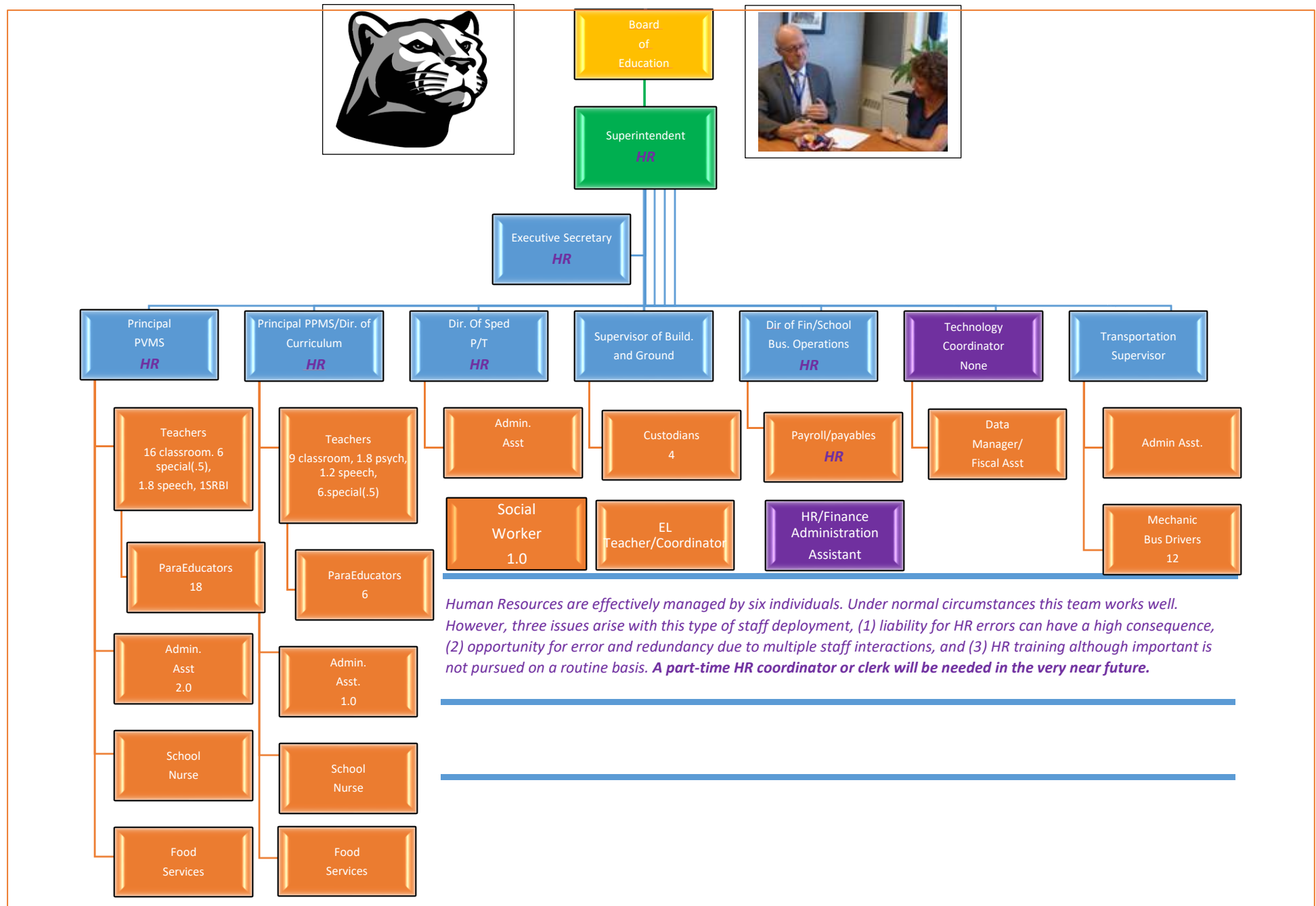


# Preston Public Schools Organizational Chart

Revised March 2022



*Human Resources are effectively managed by six individuals. Under normal circumstances this team works well. However, three issues arise with this type of staff deployment, (1) liability for HR errors can have a high consequence, (2) opportunity for error and redundancy due to multiple staff interactions, and (3) HR training although important is not pursued on a routine basis. **A part-time HR coordinator or clerk will be needed in the very near future.***