

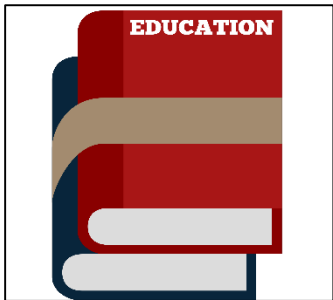
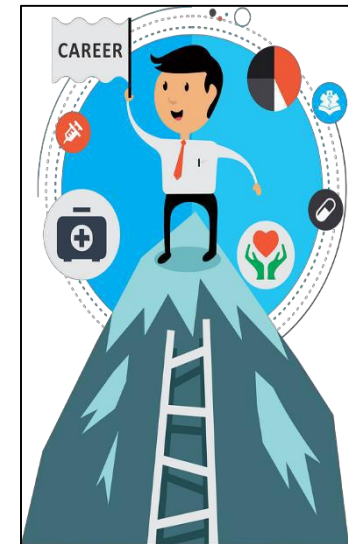
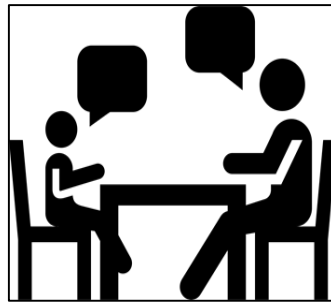
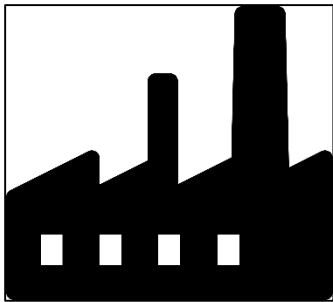
Sayreville War Memorial High School

**CTE PROGRAM
2018-19**

What is a Career Pathway

What is a Career Pathway?

Workforce Innovation and Opportunity Act

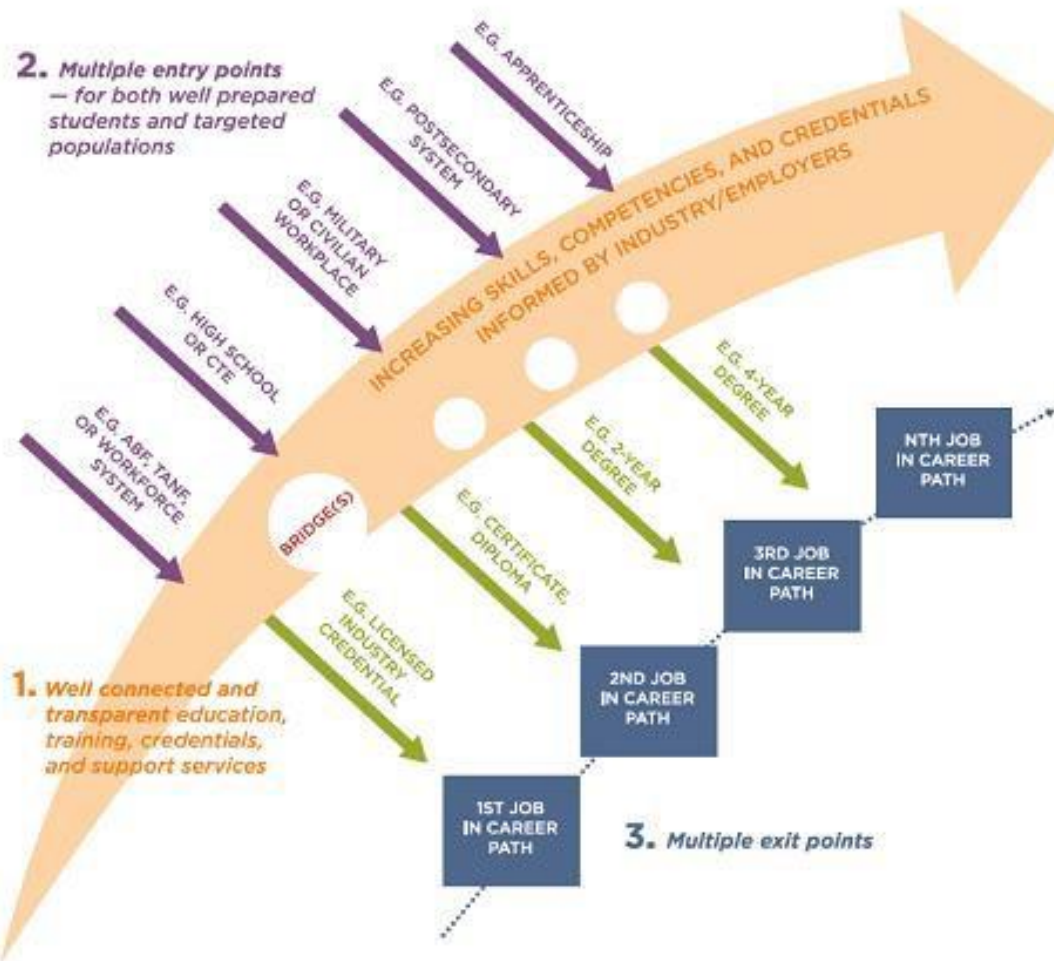


NJ Key Industry Clusters

- Biopharmaceutical & Life Sciences
- Transportation, Logistics, Distribution
- Financial Services
- Advanced Manufacturing
- Health Care
- Technology
- Construction and Utilities
- Leisure, Hospitality and Retail

NJLWD: Bureau of Labor Market Information

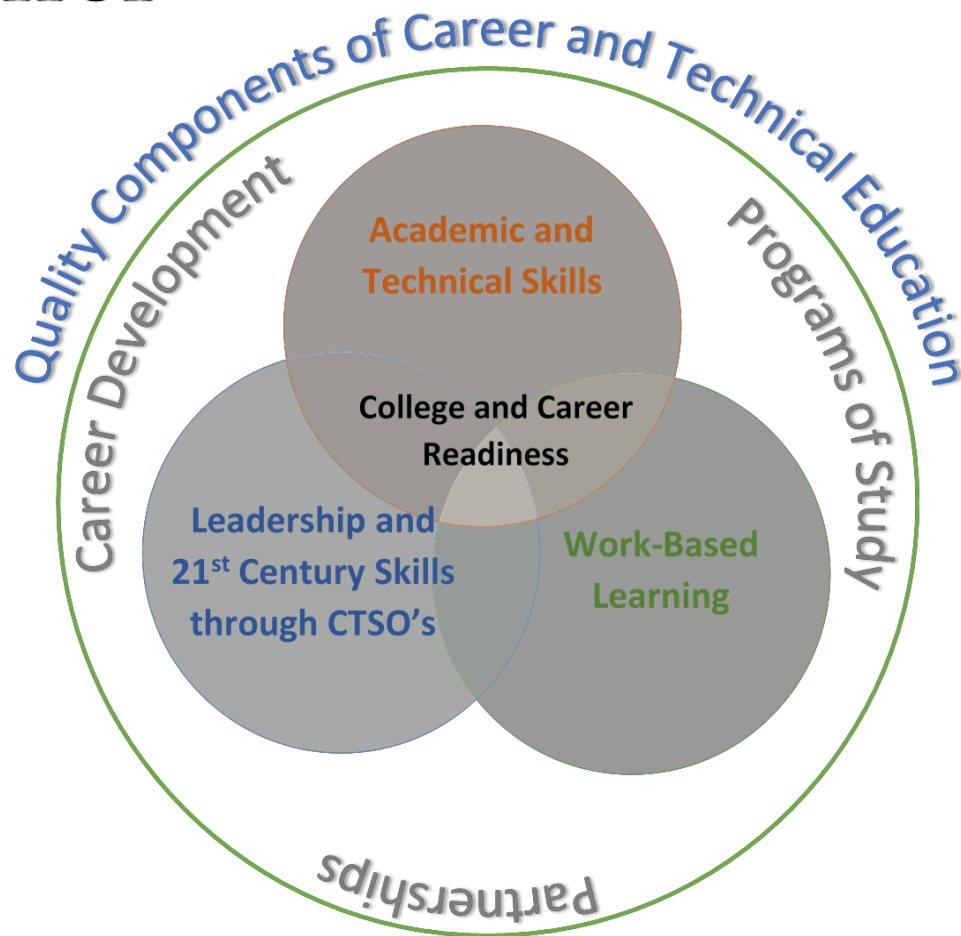
Career Pathway



Source: Shared Vision, Strong Systems: The Alliance for Quality Career Pathways Framework Version 1.0, Center for Law and Policy, June 2014.

Delivering Career Pathways through Career and Technical Education

CTE – Where Skills Come Together



Imagine a reality where all learners are given the opportunity and support to realize their full potential.



A Reality Where All Learners

- Have access to a high-quality education that leads to rewarding career opportunities.
- Gain the skills they need, when they need them, without the limitation of place or time.
- Encounter no barriers between academic and technical instruction, secondary and postsecondary education, and the workplace.
- Are empowered with the information they need to map out a flexible pathway that leads to success.
- Are taught by a range of knowledgeable experts who can deftly link the classroom to the real world.

Career Clusters®

 <p>CareerClusters® PATHWAYS TO COLLEGE & CAREER READINESS</p> <p>Agriculture, Food & Natural Resources</p>	 <p>CareerClusters® PATHWAYS TO COLLEGE & CAREER READINESS</p> <p>Education & Training</p>	 <p>CareerClusters® PATHWAYS TO COLLEGE & CAREER READINESS</p> <p>Hospitality & Tourism</p>	 <p>CareerClusters® PATHWAYS TO COLLEGE & CAREER READINESS</p> <p>Manufacturing</p>
 <p>CareerClusters® PATHWAYS TO COLLEGE & CAREER READINESS</p> <p>Architecture & Construction</p>	 <p>CareerClusters® PATHWAYS TO COLLEGE & CAREER READINESS</p> <p>Finance</p>	 <p>CareerClusters® PATHWAYS TO COLLEGE & CAREER READINESS</p> <p>Human Services</p>	 <p>CareerClusters® PATHWAYS TO COLLEGE & CAREER READINESS</p> <p>Marketing</p>
 <p>CareerClusters® PATHWAYS TO COLLEGE & CAREER READINESS</p> <p>Arts, A/V Technology & Communications</p>	 <p>CareerClusters® PATHWAYS TO COLLEGE & CAREER READINESS</p> <p>Government & Public Administration</p>	 <p>CareerClusters® PATHWAYS TO COLLEGE & CAREER READINESS</p> <p>Information Technology</p>	 <p>CareerClusters® PATHWAYS TO COLLEGE & CAREER READINESS</p> <p>Science, Technology, Engineering & Mathematics</p>
 <p>CareerClusters® PATHWAYS TO COLLEGE & CAREER READINESS</p> <p>Business Management & Administration</p>	 <p>CareerClusters® PATHWAYS TO COLLEGE & CAREER READINESS</p> <p>Health Science</p>	 <p>CareerClusters® PATHWAYS TO COLLEGE & CAREER READINESS</p> <p>Law, Public Safety, Corrections & Security</p>	 <p>CareerClusters® PATHWAYS TO COLLEGE & CAREER READINESS</p> <p>Transportation, Distribution & Logistics</p>

CTE Program

- Delivers a progressive, coherent sequence of three or more courses that build upon each other.
- Provides technical skill proficiency, an industry-recognized credential, a certificate or an associate degree.
- Includes applied learning that contributes to the academic knowledge, technical and employability skills, work attitudes, and knowledge of all aspects of an industry.
- Maintains an advisory committee to stay current on business and collegiate trends.

CTE Program

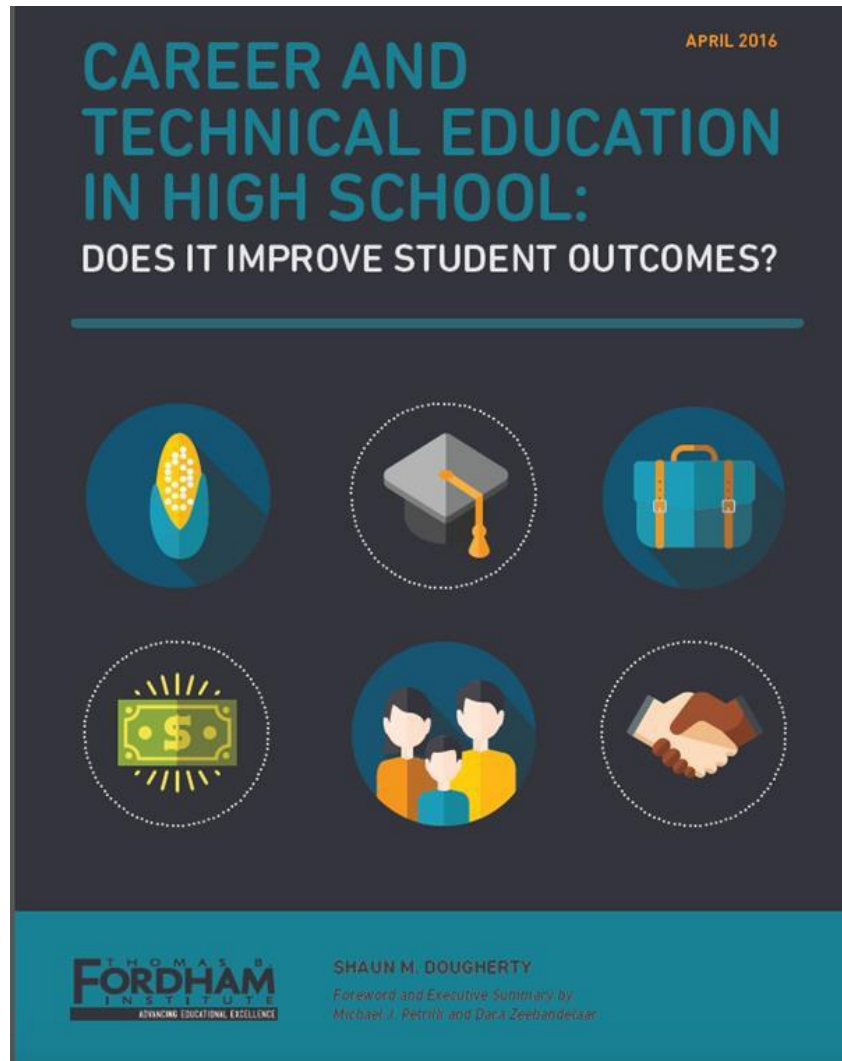
- Incorporates applied, contextual, cross curricular and interdisciplinary instructional strategies into the curricula.
- Provides opportunities to participate in structured learning experiences and career and technical student organizations (CTSO).
- Prepares students for entry-level employment or postsecondary degree in a specific pathway, and is aligned with business/industry standards.

Why Career Pathways

- 87% of Americans agree that high school students should receive more education about possible career choices
- 77% of Americans believe more emphasis is needed on preparing students for career fields with better employment opportunities
- 6 in 10 Americans said students should be required to participate in at least one volunteer or paid internship in high school

PDK/Gallup Poll 2014

Why Career Pathways



Key Points

- The more Career and Technical Education (CTE) courses students take, the better their education and labor outcomes
 - Increasing probability of graduating from high school and enrolling in college
 - Increasing probability of being employed with higher wages
 - Dual enrollment – magnifies the positive impact that the dual enrollment status has on initial college enrollment
- CTE concentrators are 21 percentage points more likely to graduate from high school than otherwise identical students
- Male and low income students see the largest benefits from concentrating

Report Recommendations

- Offer CTE courses aligned to skills and industry credentials in the state's high-growth industries
- Encourage (or require) students taking multiple CTE courses to concentrate rather than enrolling haphazardly
- Support and encourage dual enrollment and make credits “stackable” from high school to college

Building Capacity for Career Pathways

Statewide Goal:

To increase access and opportunities for New Jersey students to participate in high-quality career and technical education programs in comprehensive high schools, delivered through career pathways leading to careers with high labor market demand and family-sustaining wages.

Benefits of a Career Pathway Program

- Industry Valued Credentials
- Dual Credit through Postsecondary Articulation
- In-demand Industry Focus
- Real-World learning & Motivated Students
- Cutting-edge technical expertise + Rigorous Academics = Higher Skilled Workforce
- Opportunities to visit worksites, participate in internships and gain an inside look at the world of work (Employability Skills)
- College and Career preparedness
- Build a Strong Economy

Program of Study

SAYREVILLE WAR MEMORIAL HIGH SCHOOL

BUSINESS  **ACADEMY**

TO EMPOWER STUDENTS TODAY TO BE BUSINESS LEADERS OF TOMORROW

Business Academy Program of Study

	Grade 10	Grade 11	Grade 12
Accounting	Business Organization and Management Economics	Financial Accounting (H)	Managerial Accounting Capstone
Marketing	Business Organization and Management Economics	Essentials of Marketing Sports and Entertainment Marketing	Entrepreneurship Capstone

CTE ADVISORY BOARD

- Dr. Marilyn Shediack (Assistant Superintendent of Curriculum and Instruction)
- Mr. Steven Casano (Executive Director , **NeuroSearch** , division of Diedre Moire Corporation, Inc.)
- Ms. Donna Sicola (Supervisor of Guidance and District Test Coordinator)
- Dr. Cynthia Defina (Supervisor of Secondary Special Education)
- Ms. Mala Maharana (Supervisor of Mathematics, Business and Computer Science)
- Ms. Marybeth Drabik (Teacher of Business)
- Ms. Florence Berman (Teacher of Business)
- Mr. Aneillo Mazzeo (Teacher of Business, Cooperative Education Program Coordinator and SLE Supervisor)
- Ms. Kalgi Patel (Student in the Business Academy)
- Ms. Abigail Chandrika (Student in the Business Academy)
- Mr. Zachary Brown (Student in the Business Academy)