



Park Hill School District

Building Successful Futures • Each Student • Every Day

REQUEST FOR PROPOSAL

2022 Asphalt and Concrete Projects

Graden Elementary School

Renner Elementary School

Lakeview Middle School

Plaza Middle School

Southeast Elementary School

Park Hill South High School

Park Hill High School

District Office

Aquatic Center

English Landing Elementary School

Chinn Elementary School

Prairie Point Elementary School

Detailed Proposal Information is Available on District Website

<http://www.parkhill.k12.mo.us>

Bid Closing Date: April 8, 2022

Bid Closing Time: 10:00 AM CST

Park Hill School District reserves the right to reject any or all proposals and to waive informalities or irregularities in any proposal.

Dear Contractor:

The Park Hill School District is seeking proposals from qualified contractors to complete concrete and asphalt projects throughout the District.

A mandatory “pre-bid” meeting and walk through will start at Graden Elementary at 8804 NW 45 Highway Parkville, MO 64152 we will meet on **Friday, April 1, 2022 at 10:00am CST** in the west lot by the front door. We will continue to the other locations after Graden. If you have any questions, please contact Joe Hagg at 816-359-6967.

Sealed proposals will be accepted at the Support Services office located at 9501 N. Seymour, Kansas City, MO 64153 on April 8, 2022 at 10:00 AM CST. Proposals will be opened at that time.

Proposals must be returned on the form(s) provided, with “Bid Proposal – 2022 Asphalt and Concrete Projects” clearly on the label. A proposal must consist of all pages of the proposal request including the signature page signed by an authorized representative of the firm. Non-conformance with these instructions may be grounds for rejection of proposal.

A bid shall be accompanied by a certified check, cashier’s check or surety bond for ten percent of the amount of the bid included in the proposal as a guarantee that the contractor will enter into a contract to perform the proposal pursuant to the plans and specifications.

The District reserves the right to reject any and all proposals and to waive informalities.

Faxed or e-mailed proposals will not be accepted. Late proposals will be rejected, unopened and returned.

Work must be complete by August 8, 2022. Summer school is scheduled June 6 to July 1 at some schools. **Must coordinate with the district for scheduling.** Any work not completed by August 8, 2022 shall result in a \$1,000 per diem penalty to be deducted by the District from final payment.

Prevailing Wages will apply. Current Missouri Division of Labor Standards, Wage and Hour Section, Annual Wage Order No. 27, Section 083, Platte County, or most current version will apply.

The project is tax exempt.

Contractor is responsible for any and all required permits.



Jim Rich
Director of Operations

PROJECT SCHEDULE

March 25, 2022	RFP published to Park Hill School District website
April 1, 2022	Mandatory Pre-Bid Meeting at Graden Elementary at 10:00am
April 8, 2022	Sealed bids due by 10:00 AM to 9501 N. Seymour Ave, Kansas City MO 64153
April 28, 2022	Park Hill School District Board of Education: First Read - Bids, Contracts, Agreements
May 12, 2022	Park Hill School District Board of Education: Second Read and Vote
May 13, 2022	Park Hill Buildings and Grounds Department will contact board approved contractor(s) to proceed with project
July 5, 2022	Approximate work start date
August 8, 2022	Work completion date

PROJECT REQUIREMENTS

Project Safety

Construction equipment and the work area is required to be secured in a manner that protects the public and employees from hazard. The Contractor will be responsible for assuring that physical barriers required to prevent vehicle and pedestrian hazards remain intact throughout the duration of the project. The Contractor is required to conduct operations in a manner that is consistent and compliant with OSHA safety requirements. Contractor to provide all temporary utilities, including toilet, water, electric, etc. No access to the building unless for emergency.

Building Permits, Traffic Permits and Inspections

Contractor will be responsible for obtaining and the cost of all required building permits, storm water permits and plans, traffic permits, water metering and inspection fees associated with this project. All permits must be obtained prior to commencing work.

Public and Private Utilities

Contractor shall contact local agencies to locate underground utilities. Park Hill School District shall be responsible to locate private utilities. Contractor shall protect known utilities, landscaping, curbing, irrigation system components and all existing structures. Should damage occur, contractor is responsible to return each above to their original condition.

Removal of Construction Debris and Materials

Remove and dispose of materials properly per AHJ, OSHA, and EPA regulations. The Contractor will not dispose of any trash or construction materials in property's trash containers. Construction debris, millings and excavated granular, soil or excess materials must be removed from the project site by Contractor daily. Insure no rock or construction material reaches building, landscape, or other areas. Concrete wash out shall be off-site. Broom or blow clean all trash and construction debris at each facility's final completion. Return landscaping and all existing structures to original condition or better.

Warranty

Contractor shall warranty all project materials and workmanship for a minimum of one year from substantial completion. New surfacing shall be warranted from raveling, delamination, potholing or surface cracking for a period of one year. Contractor is responsible to maintain proper drainage and insure no ponding water. Specific concerns regarding warrantability due to existing condition(s) must be brought to the attention of Park Hill School District in advance.

Concrete Curb & Gutter

Concrete curb and gutter to be match existing curbing in style, reveal and width. Thickness to be per plans and details. Place 1/2-inch fiber expansion joints where new curbing abuts existing. Dowel new curbing to existing with three (3) #4 rebar. Place three (3) continuous runs of #4 rebar in new curb and gutter. Expansion joints shall not exceed every 30 LF of curbing run, minimum 1-inch deep tool joints not to exceed every 10 LF of curbing run. Concrete to be minimum 3,500 psi. Back-fill topsoil behind new curb and tamp.

Concrete Sidewalk

Concrete sidewalk to be a minimum of 4-inches thick and reinforced with light welded wire mesh. Place 1/2-inch fiber expansion joints where new concrete abuts existing. Expansion joints shall be placed at sidewalk intersections, at back-side of curbing and not exceed every 50 LF of sidewalk run. Minimum 1-inch deep tool joints to be placed on center and not to exceed the width of the sidewalk. Sidewalks wider than 8'-0" to have longitudinal tool joint at mid-point in width. Concrete to be minimum 3,500 psi. Back-fill topsoil behind new sidewalk and tamp.

Concrete Pavement

Concrete pavement to be a minimum of 6-inches thick and reinforced with heavy welded wire mesh. Place 1/2-inch fiber expansion joints where new concrete abuts existing. Dowel new concrete pavement to existing with #4 rebar not less than every 18-inches on center or per plans. Expansion joints shall not exceed every sixty feet (60') square. Apply cure and seal. As soon as feasible, saw-cut minimum 2-inch deep control joints not to exceed fifteen feet (15') square. Concrete to be minimum 4,000 psi. Do not permit vehicular traffic on concrete pavement until it has sufficiently cured.

HMA Mix Design

HMA mix design to be Type 3R. Asphalt wearing surface minimum density should be 92%. Placement of coarse graded surface mix is not allowed. Contractor is responsible to provide Hot Mix Asphalt surface mix design approved for intended use by the MoDOT Specifications. The asphalt surface should be placed per MoDOT Standard Specifications for temperature, jointing and compaction. Contractor shall provide material tickets verifying approved HMA mix delivery.

HMA Installation

Shall be performed in accordance with, and conform to, the most current version of applicable MoDOT Standard Specifications.

Examine the existing base materials to verify that conditions are satisfactory to receive the new paving system. 95% standard compaction must be achieved. Where feasible, proof-roll base materials using heavy, pneumatic-tired rollers to locate areas that may be unstable or that require further compaction. Before proceeding with any installation, notify Park Hill School District of any soil or base areas that are unsuitable to properly support new paving. Install tack coat.

New asphalt surface course shall be a minimum of two inches (2") thick after compaction. Average Density to be 92 percent, but not less than 90 percent nor greater than 96 percent. Compact areas inaccessible to roller equipment thoroughly, using tamper or other satisfactory method.

Contractor is responsible to provide photographic record that HMA temperature requirements are met, including; minimum surface temperature, HMA placing minimum temperature and HMA compaction completion minimum temperature. Complete compaction before mix temperature cools to 185°F. Contractor will be fully responsible for replacement of and re-application of materials at its cost should photographic record not be provided.

After final rolling, do not permit vehicular traffic on pavement until it has cooled enough not to become marked.

Crack-sealing

Route out all suitable, straight-line cracking in asphalt pavement 1/4-inch wide or greater to form a reservoir for hot applied crack sealant. Thoroughly clean route reservoir with compressed air or other satisfactory method to remove any dust or debris. Seal cracks with Crafcro Parking Lot Sealant (or approved equal) per manufacturer's application specifications. Fill cracking as close to flush as possible; a thin squeegeed band-aid is acceptable.

Seal-coating

Mechanically remove existing thermoplastic traffic markings. Remove oil and grease spots by scrubbing and flushing with water until clean. Clean asphalt surface of all loose dust, dirt, leaves, and any other foreign materials by contractor preferred method. Seal-coat material to be high quality, polymer modified coal-tar emulsion. Machine apply two (2) layers of seal-coating. First application to be by self-propelled squeegee machine.

Second application to be spray applied. Do not permit vehicular traffic on pavement until sealer has cured enough not to become marked.

Painted Pavement Markings

Where feasible, allow new surfacing to cure for two to four weeks prior to new painting. New pavement markings to match existing in type. Existing thermoplastic markings to be re-applied to match. Existing acrylic paint to be re-applied to match. Application with brush or roller is not allowed. Mark the International Handicapped Symbol at indicated parking spaces using a suitable template and pneumatic sprayer. Apply uniformly painted markings of color(s), lengths and widths to match existing with sharp edges and ends.

Measurements

Contractor will be responsible for taking accurate measurements of all areas.

Package #1

Graden Elementary

8804 NW 45 Highway, Parkville, MO 64152

- Resurface the pavement in the Blue outlined area with 2" HMA mill and pave.
A- Approximately 2,647 SY
- Include an allowance of **500 SY of 6" base replacement** for any areas we determined needed after the 2" mill.
- Replace curb and gutter in the yellow outlined areas to match existing.

A- Approximately 33 linear ft
- Re-Stripe all pavement markings in the Blue outlined areas to match existing material type, layout, and color. This also includes all curb and gutter.
- In the Red outlined areas need a **full depth mill with a 6" base replacement** and making the storm drain level with surface.
- *Alternate Bid: Include a separate price for a **full mill depth with a 6" base replacement** for entire Blue outlined area.

Lakeview Middle School

6720 NW 64th St, Kansas City, MO 64151

- Resurface the pavement in the Blue outlined area with 2" HMA mill and pave.
A- Approximately 6,600 SY
- Include an allowance of **500 SY of 6" base replacement** for any areas we determined needed after the 2" mill.
- Replace curb and gutter in the yellow outlined areas to match existing.

A- Approximately 69 Linear ft.
- Restripe all pavement markings in the Blue outlined area. Price as to replace existing markings but **do not stripe without contacting the District Grounds department** first as there might be changes.

Graden Asphalt 22

Write a description for your map.

Legend


- Graden Elementary School





Lakeview Asphalt 22

Write a description for your map.

Legend

 English Landing Elementary School

 Northwest Bible Church

 Polygon Measure



Package #2

Park Hill Softball Asphalt

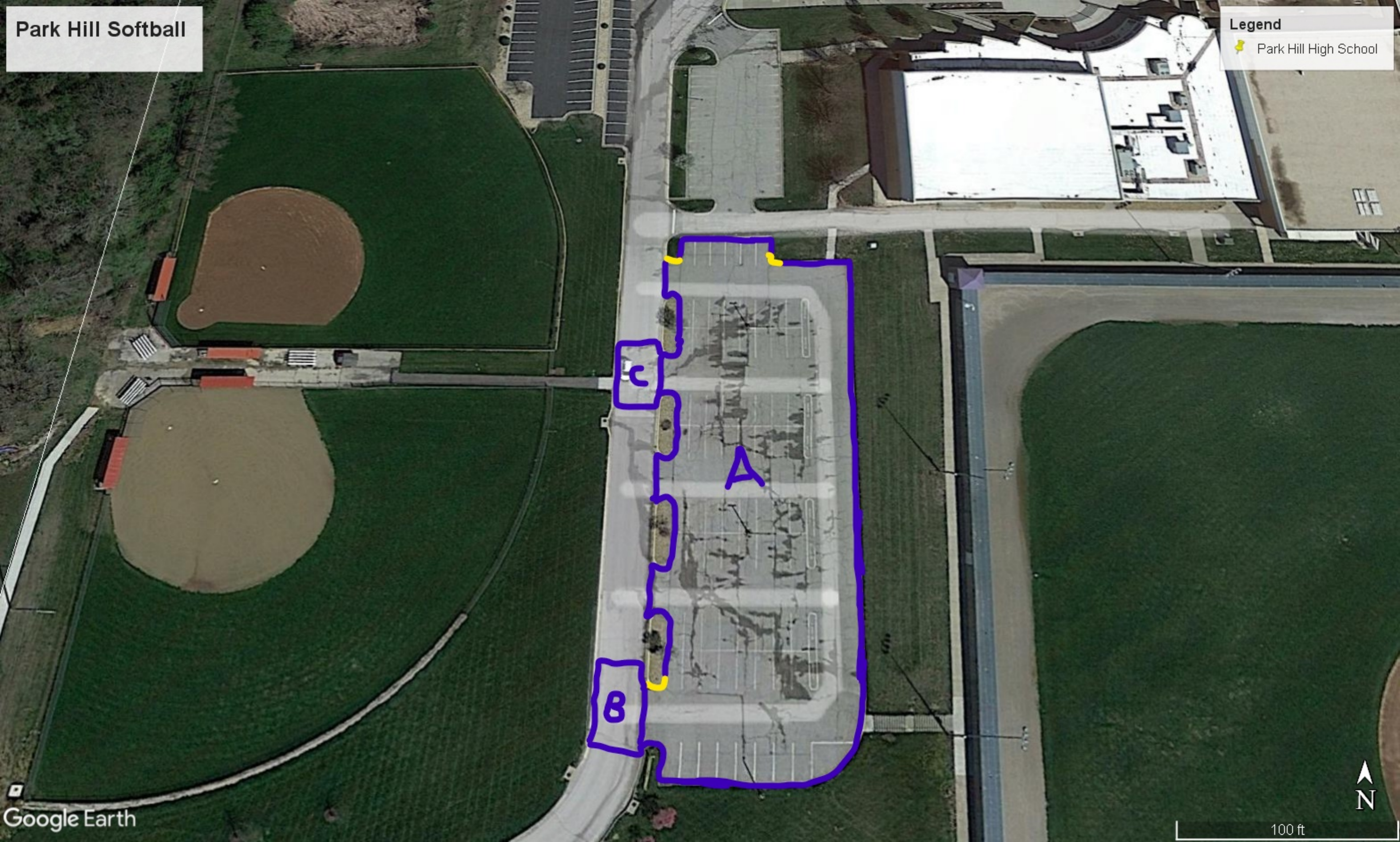
7701 NW Barry Road, Kansas City, MO 64153

- Resurface the pavement in the Blue outline areas with 2"HMA mill and pave.
 - A- Approximately 3,432 SY
 - B- Approximately 483 SY
 - C- Approximately 261 SY
- Include an allowance of **300 SY of 6" base Replacement** for any areas we determine needed after the 2" mill.
- Replace curb and gutter in the yellow outlined areas to match existing
 - A- Approximately 65 linear ft
- Re-stripe all pavement markings in the Blue outlined areas to match existing material type, layout, and color. This also includes all curb and gutter.

Southeast Elementary Asphalt

5704 NW Northwood, Kansas City, MO 64151

- Resurface the pavement in the Blue outlined area with 2" HMA mill and pave.
 - A- Approximately 6,479 SY
- Include an allowance of **500 SY of 6" base replacement** for any areas determined needed after the 2" mill.
- Replace curb and gutter in the yellow outlined area to match existing.
 - A- Approximately 125 linear ft
- Re-stripe all pavement markings in the Blue outlined area to match existing material type, layout and color. This includes curb and gutter.
- In the Red outlined area cut out and replace asphalt that broken up.
 - A- Approximately 10' x 10'
- In the Green outlined area dig out existing rock and replace with a concrete spillway and install a new catch basin minimum of 12"x 12" concrete around entire catch basin and attach to existing pipe.
- Remove and replace 7 sections of concrete sidewalk
 - A- Approximately 180 sqft Total

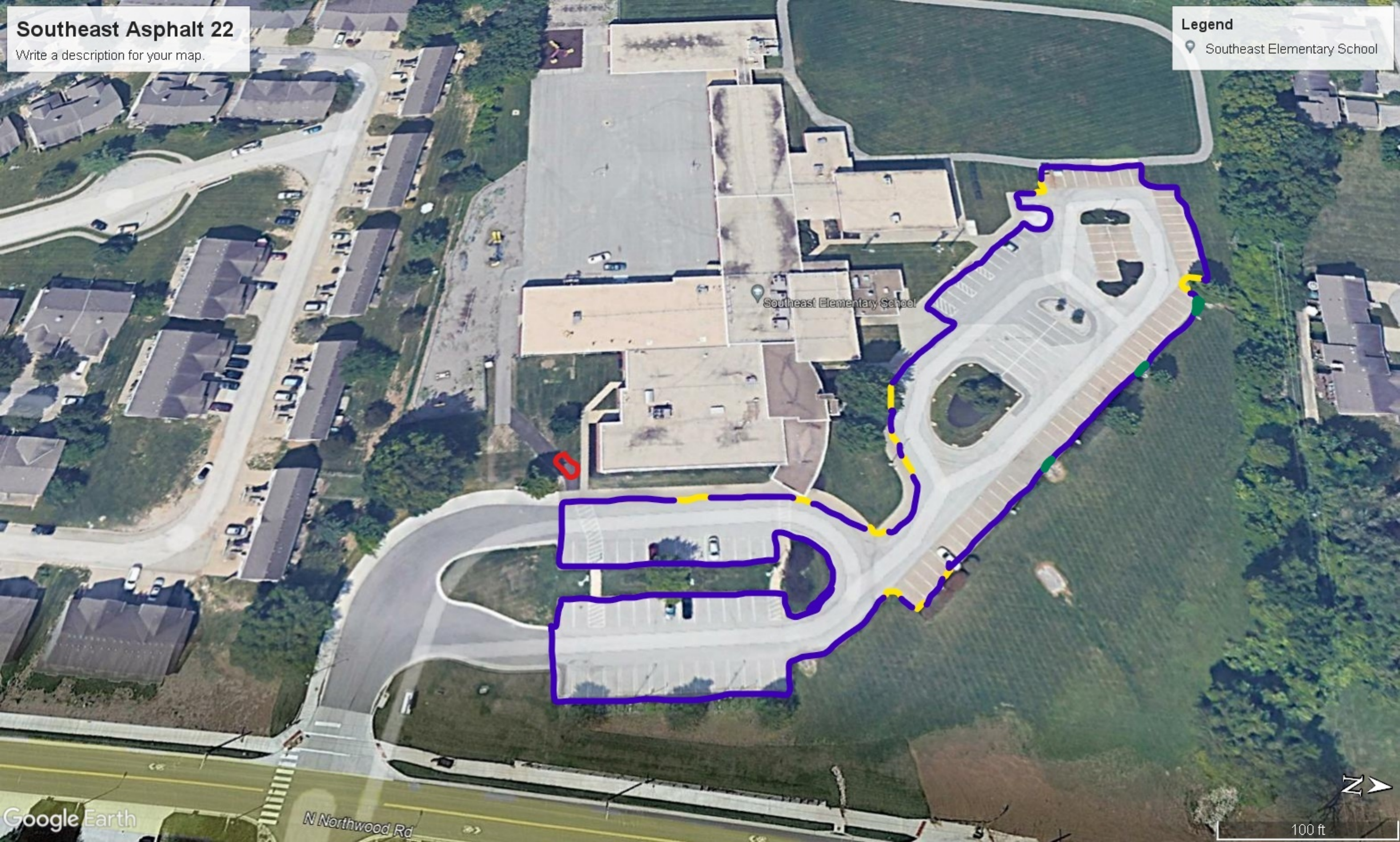


Southeast Asphalt 22

Write a description for your map.

Legend

📍 Southeast Elementary School



Southeast Elementary School

Package #3

Aquatic Center

8152 N. Congress, Kansas City, MO 64152

- In the Green outlined area properly prepare the surface and apply **Reclamite Petroleum Maltene-Based Rejuvenating Agent**
A- Approximately 6,435 SY

Chinn Elementary

7100 NW Chatham Rd, Kansas City, MO 64151

- In the green outline properly prepare the surface and apply **Reclamite Petroleum Maltene-Based Rejuvenating Agent**
A- Approximately 5,199 SY
- Lots need to be completed at separate days to allow vehicles to park on one side.

Renner Parking Lot

7401 NW Barry Road, Kansas City, MO 64152

- In the Green outlined area properly prepare the surface and apply **Reclamite Petroleum Maltene-Based Rejuvenating Agent**
A- Approximately 6,609 SY

Plaza Middle School

6501 NW 72nd St, Kansas City, MO 64151

- In the Green outlined area properly prepare the surface and apply **Reclamite Petroleum Maltene-Based Rejuvenating Agent**
A- Approximately 4,795 SY

Park Hill South High School

4500 NW Riverpark Dr, Riverside, MO 64150

- In the Green outlined area properly prepare the surface and apply **Reclamite Petroleum Maltene-Based Rejuvenating Agent**
A- Approximately 3,574 SY

Aquatic Center

Legend

- Chinn Elementary
- Gloria Dei Community Garden
- Gloria Dei Lutheran Church - Food?
- Polygon Measure



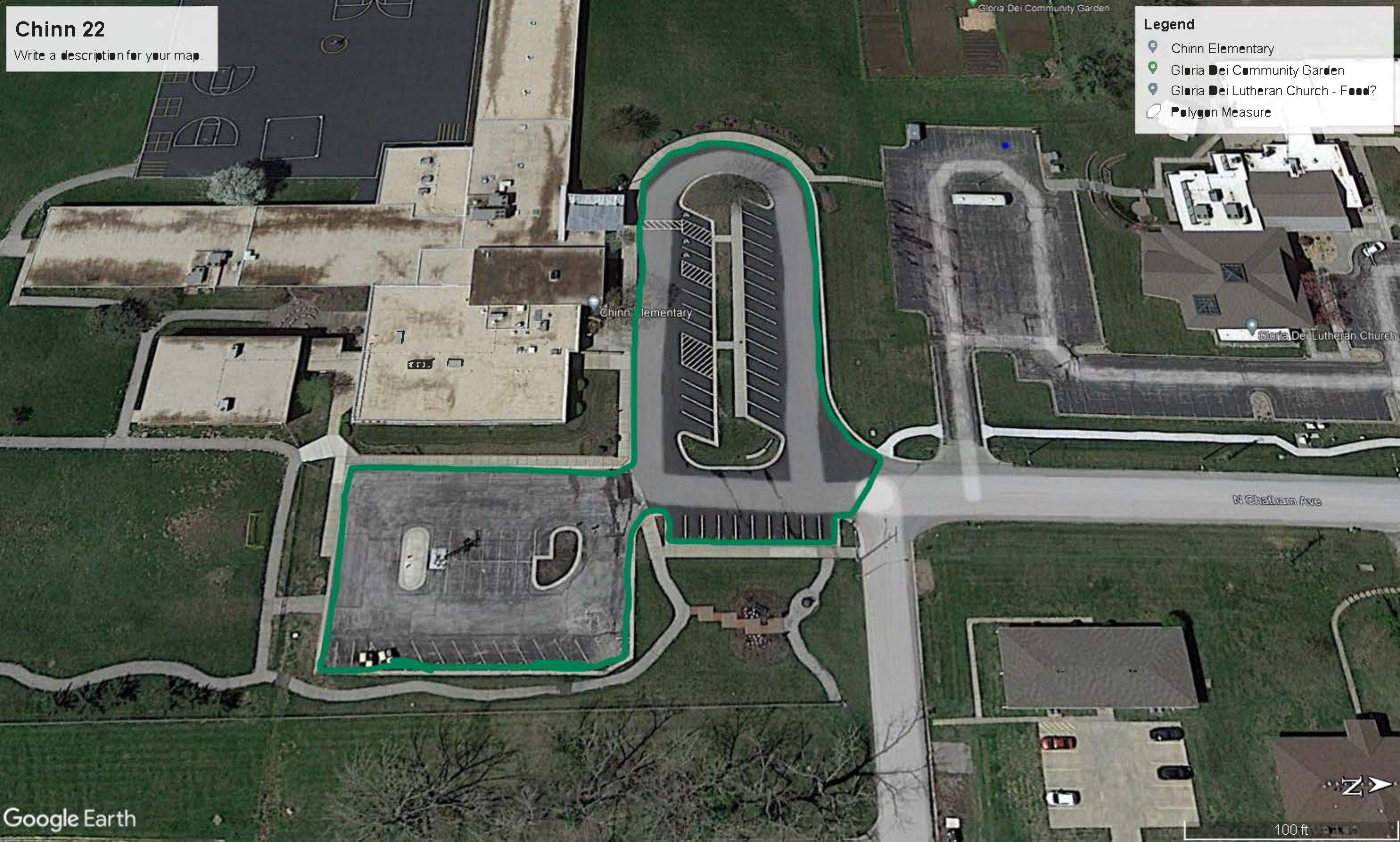
Legend

Chinn Elementary

Gloria Dei Community Garden

Gloria Dei Lutheran Church - Food?

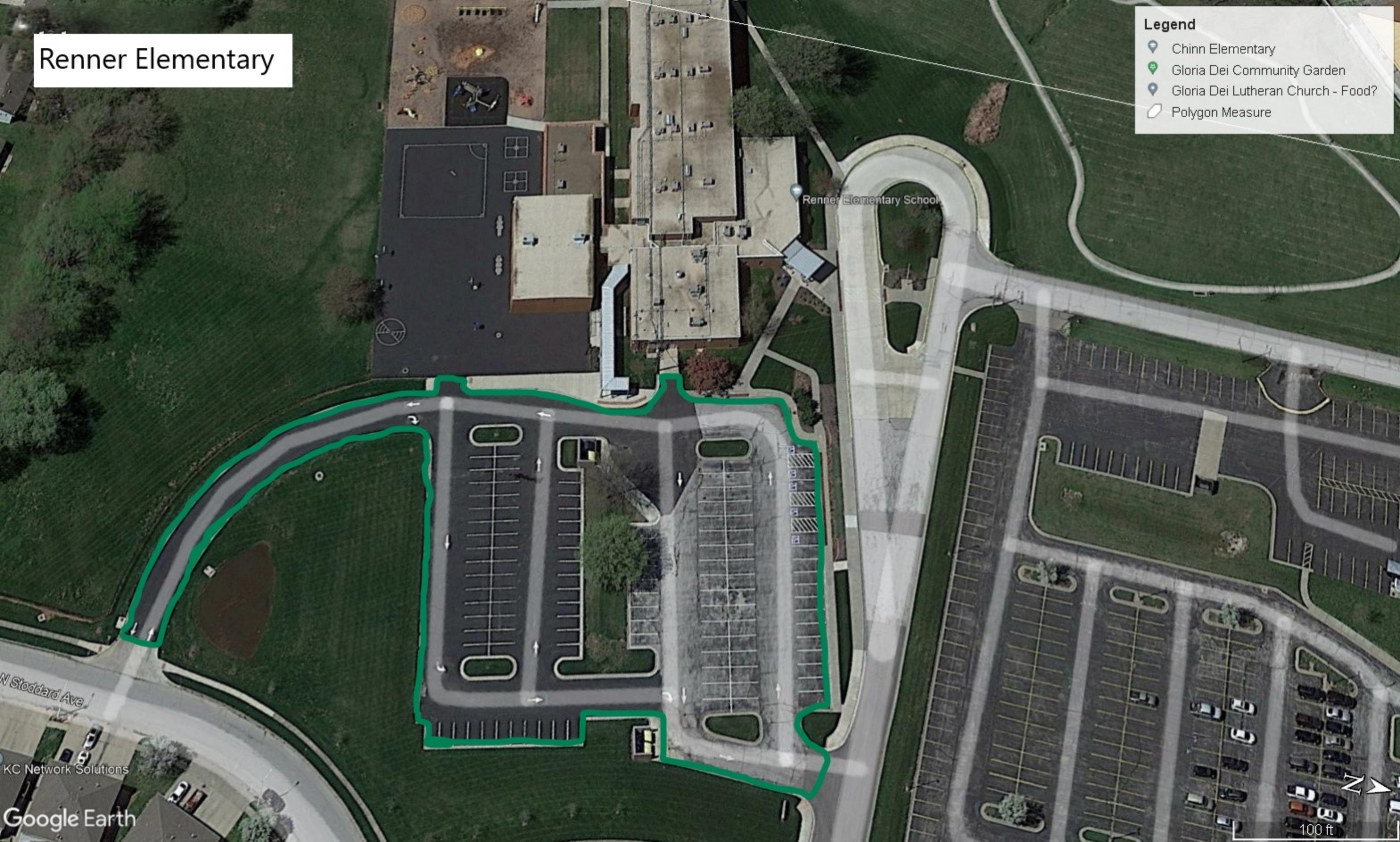
Polygon Measure



Renner Elementary

Legend

- Chinn Elementary
- Gloria Dei Community Garden
- Gloria Dei Lutheran Church - Food?
- Polygon Measure



N Stoddard Ave

KC Network Solutions


Google Earth


100 ft


Plaza 22


Write a description for your map.

Legend

 Chinn Elementary

 Gloria Dei Community Garden

 Gloria Dei Lutheran Church - Food?

 Polygon Measure



NW 72nd St

Plaza Middle School

Park Hill South
High School



Park Hill South High School

River Park Dr

Package #4

District Office

7703 NW Barry Road, Kansas City, MO 64153

- In the purple outlined area properly prepare the asphalt surface and apply 2 coats of **polymer modified coal-tar emulsion sealcoat**
A- Approximately 9,092 SY
- In the purple outlined area properly prepare suitable asphalt surface cracking $\frac{1}{4}$ " wide or greater and seal with hot applied rubberized crack sealant
A- Approximately 3,500 linear ft
- Re-stripe all pavement markings in the seal coated areas to match existing material, layout, and color.
- This needs to be completed in 2 phases so we can allow vehicles to park on one side and still have access.

English Landing Elementary Playground

6500 NW Klammer Rd, Kansas City, MO 64151

- In the Purple outlined area properly prepare the asphalt surface and apply 2 coats of **polymer modified coal-tar emulsion sealcoat**
A- Approximately 2,833 SY
- In the Purple outlined area properly prepare suitable asphalt surfacing cracking $\frac{1}{4}$ " wide or greater and seal with hot applied rubberized crack sealant
A- Approximately 500 linear ft
- Re-stripe all pavement markings in the seal coated areas to match existing material, layout, and color. Not expected to re-paint the areas where there has been artwork painted.

Prairie Point Elementary

8101 NW Belvidere Rd, Kansas City, MO 64152

- In the purple outlined area properly prepare the asphalt surface and apply 2 coats of **polymer modified coal-tar emulsion sealcoat**
A- Approximately 9,989 SY
- In the purple outlined area properly prepare suitable asphalt surface cracking $\frac{1}{4}$ " wide or greater and seal with hot applied rubberized crack sealant
A- Approximately 3,500 linear ft

- Re-stripe all pavement markings in the sealcoated areas to match the existing material, layout, and color.
- Lots to be completed at separate times to allow vehicles to park on one side

Renner Elementary Drive Lane

7401 NW Barry Road, Kansas City, MO 64152

- In the Purple outlined area properly prepare the asphalt surface and apply 2 coats of **polymer modified coal-tar emulsion sealcoat**
A- Approximately 3,304 SY
- In the Purple outlined area properly prepare suitable asphalt surface cracking ¼" wide or greater and seal with hot applied rubberized crack sealant.
A- Approximately 1,000 linear ft

Graden Elementary South Lot




8804 NW 45 Highway, Parkville, MO 64152

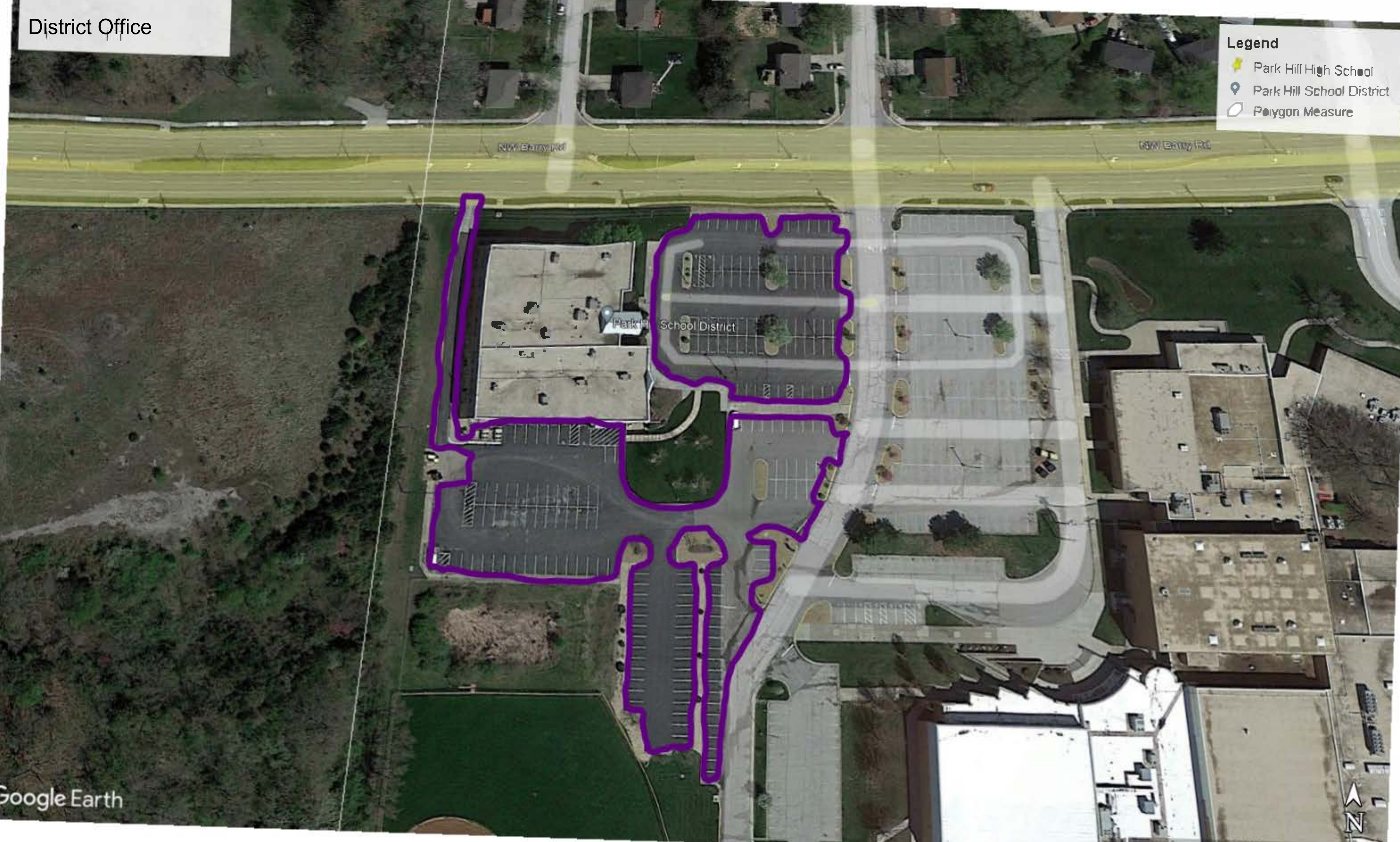
- In the purple outlined area properly prepare the asphalt surface and apply 2 coats of **polymer modified coal-tar emulsion sealcoat**
A- Approximately 2,046 SY
- In the Purple outlined area properly prepare suitable asphalt surfacing cracking 1/4" wide or greater and seal with hot applied rubberized crack sealant
B- Approximately 500 linear ft
- Re-stripe all pavement markings in the seal coated areas to match existing material, layout, and color.



District Office

Legend

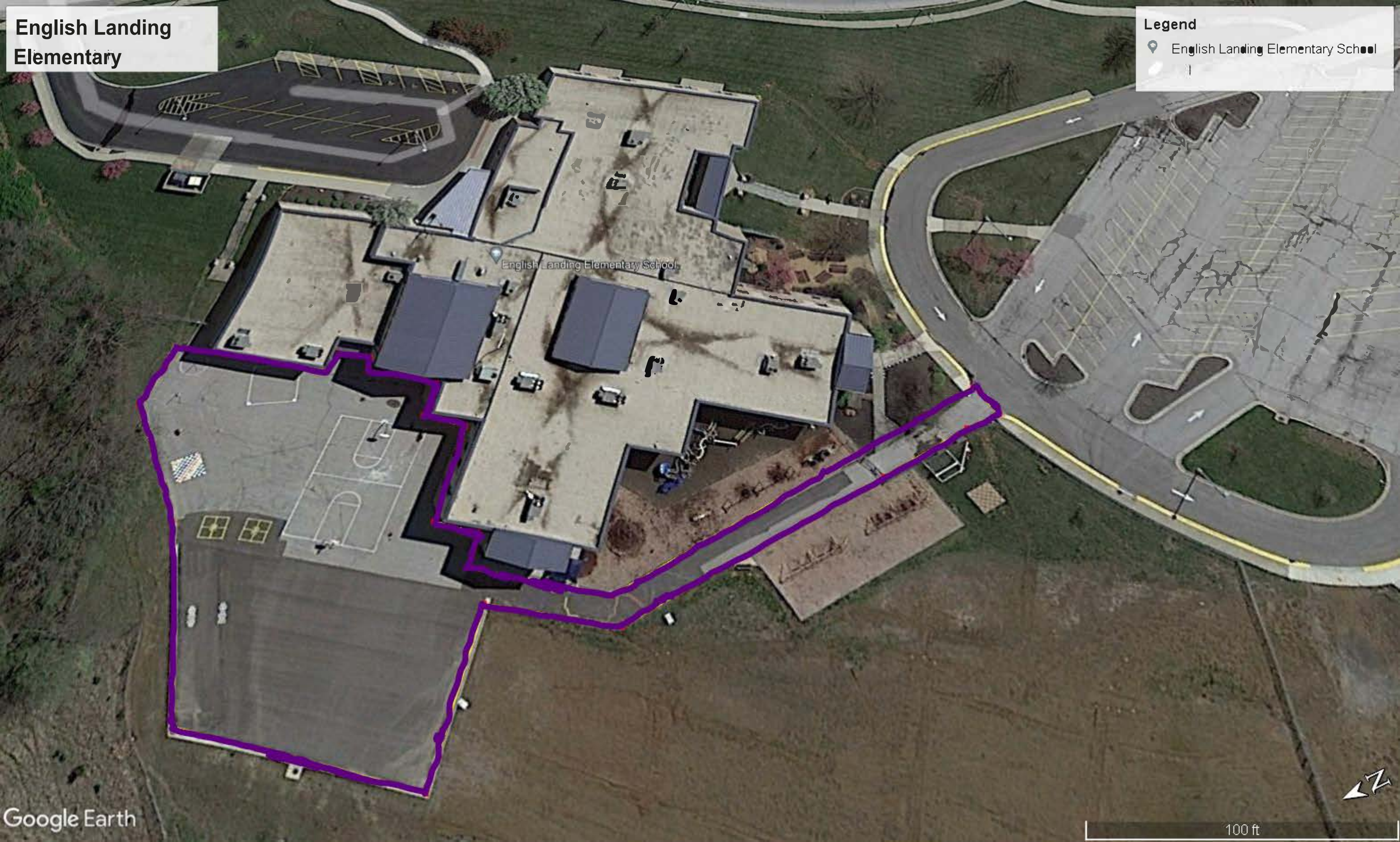
-  Park Hill High School
-  Park Hill School District
-  Polygon Measure



English Landing
Elementary

Legend


📍 English Landing Elementary School



Untitled Map

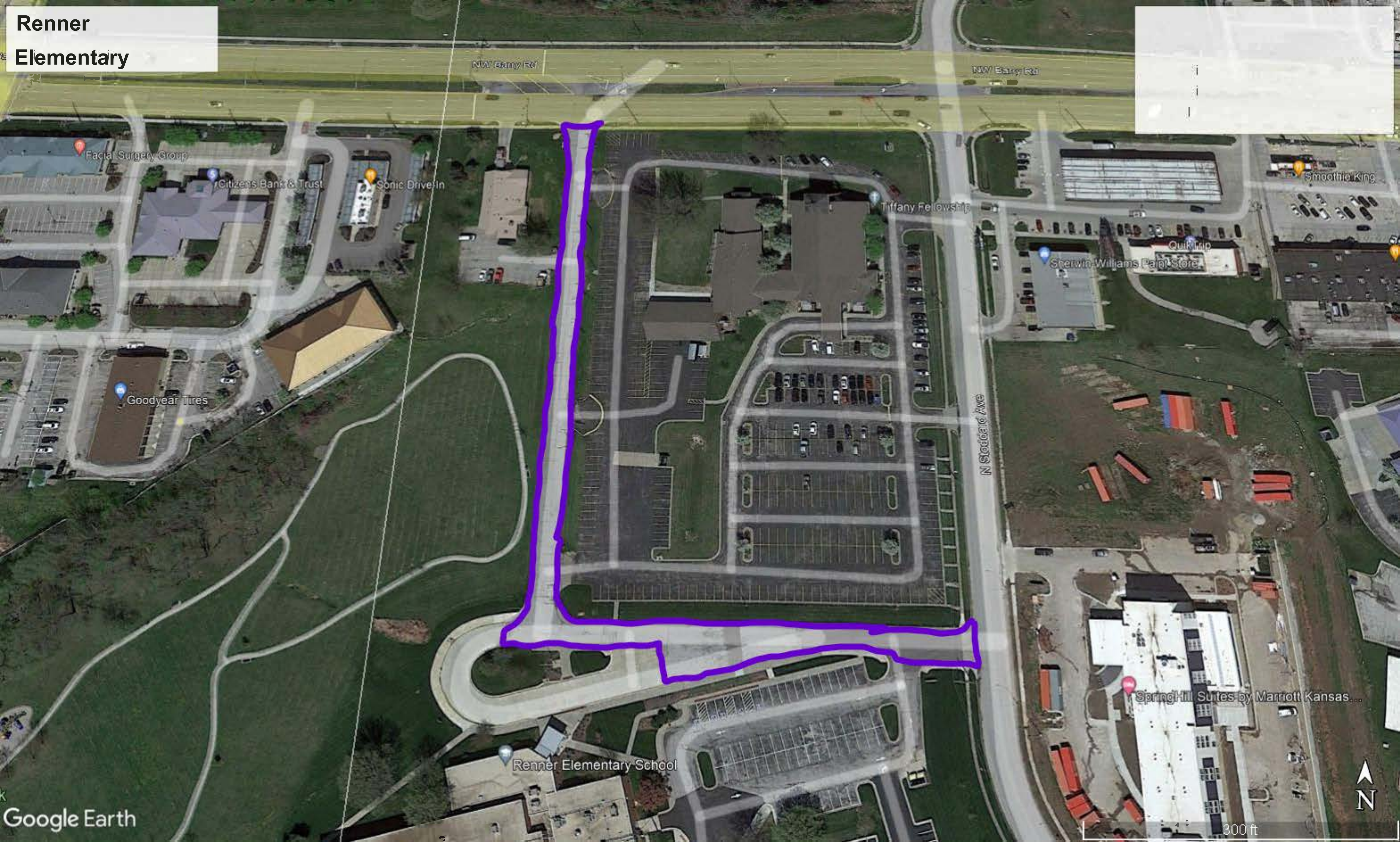
Write a description for your map.

Legend

 Prairie Point Elementary School




Renner
Elementary





Graden
Elementary

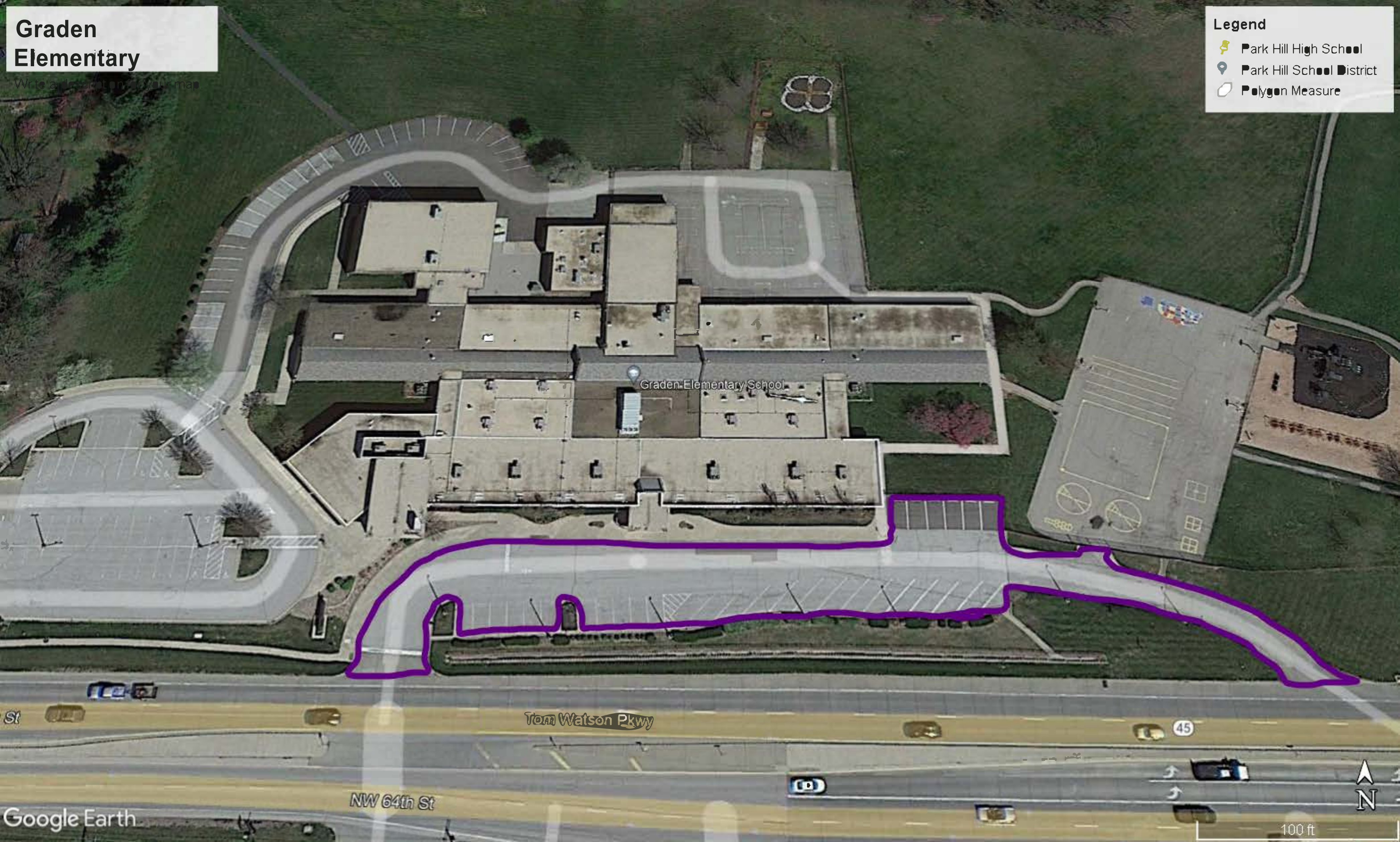
Write a description of your map

Legend

 Park Hill High School

 Park Hill School District

 Polygon Measure



Graden Elementary School

Tom Watson Pkwy

NW 64th St

Google Earth



100 ft

BID FORM – 2022 PAVEMENT REPAIR PROJECTS

Package #1	
Graden Elementary	\$ _____
Lakeview Middle School	\$ _____
*Alternate Bid	\$ _____

Total Package 1 \$ _____

This **work is to be completed no later than August 8, 2022.**

All work not completed by August 8, 2022 shall result in a \$1,000.00 per diem penalty to be deducted by the District from final payment.

Prices as bid on this form shall include total dollar amounts to cover work as specified, including labor, materials, overhead and profit.

COMPANY _____

ADDRESS _____

PHONE _____ FAX _____

EMAIL _____

PRINT NAME _____

SIGNATURE _____ Date: _____

BID FORM – 2022 PAVEMENT REPAIR PROJECTS

Package #2:	
Park Hill High School Softball	\$ _____
Southeast Elementary	\$ _____

Total Package 2 \$ _____

This **work is to be completed no later than August 8, 2022.**

No Work between June 6 and July 1 due to Summer School.

All work not completed by August 8, 2022 shall result in a \$1,000.00 per diem penalty to be deducted by the District from final payment.

Prices as bid on this form shall include total dollar amounts to cover work as specified, including labor, materials, overhead and profit.

COMPANY _____

ADDRESS _____

PHONE _____ FAX _____

EMAIL _____

PRINT NAME _____

SIGNATURE _____ Date: _____

BID FORM – 2022 PAVEMENT REPAIR PROJECTS

Package #3:	
Aquatic Center	
Chinn Elementary	\$ _____
Renner Elementary	\$ _____
Plaza Middle School	
Park Hill South High	

Total Package 3 \$ _____

This **work is to be completed no later than August 8, 2022.**

No Work between June 6 and July 1 due to Summer School.

All work not completed by August 8, 2022 shall result in a \$1,000.00 per diem penalty to be deducted by the District from final payment.

Prices as bid on this form shall include total dollar amounts to cover work as specified, including labor, materials, overhead and profit.

COMPANY _____

ADDRESS _____

PHONE _____ FAX _____

EMAIL _____

PRINT NAME _____

SIGNATURE _____ Date: _____

BID FORM – 2022 PAVEMENT REPAIR PROJECTS

Package #4:	
District Office	\$ _____
English Landing	\$ _____
Prairie Point	\$ _____
Renner	\$ _____
Graden	\$ _____

Total Package 4 \$ _____

This **work is to be completed no later than August 8, 2022.**

No Work between June 6 and July 1 due to Summer School.

All work not completed by August 8, 2022 shall result in a \$1,000.00 per diem penalty to be deducted by the District from final payment.

Prices as bid on this form shall include total dollar amounts to cover work as specified, including labor, materials, overhead and profit.

COMPANY _____

ADDRESS _____

PHONE _____ FAX _____

EMAIL _____

PRINT NAME _____

SIGNATURE _____ Date: _____