

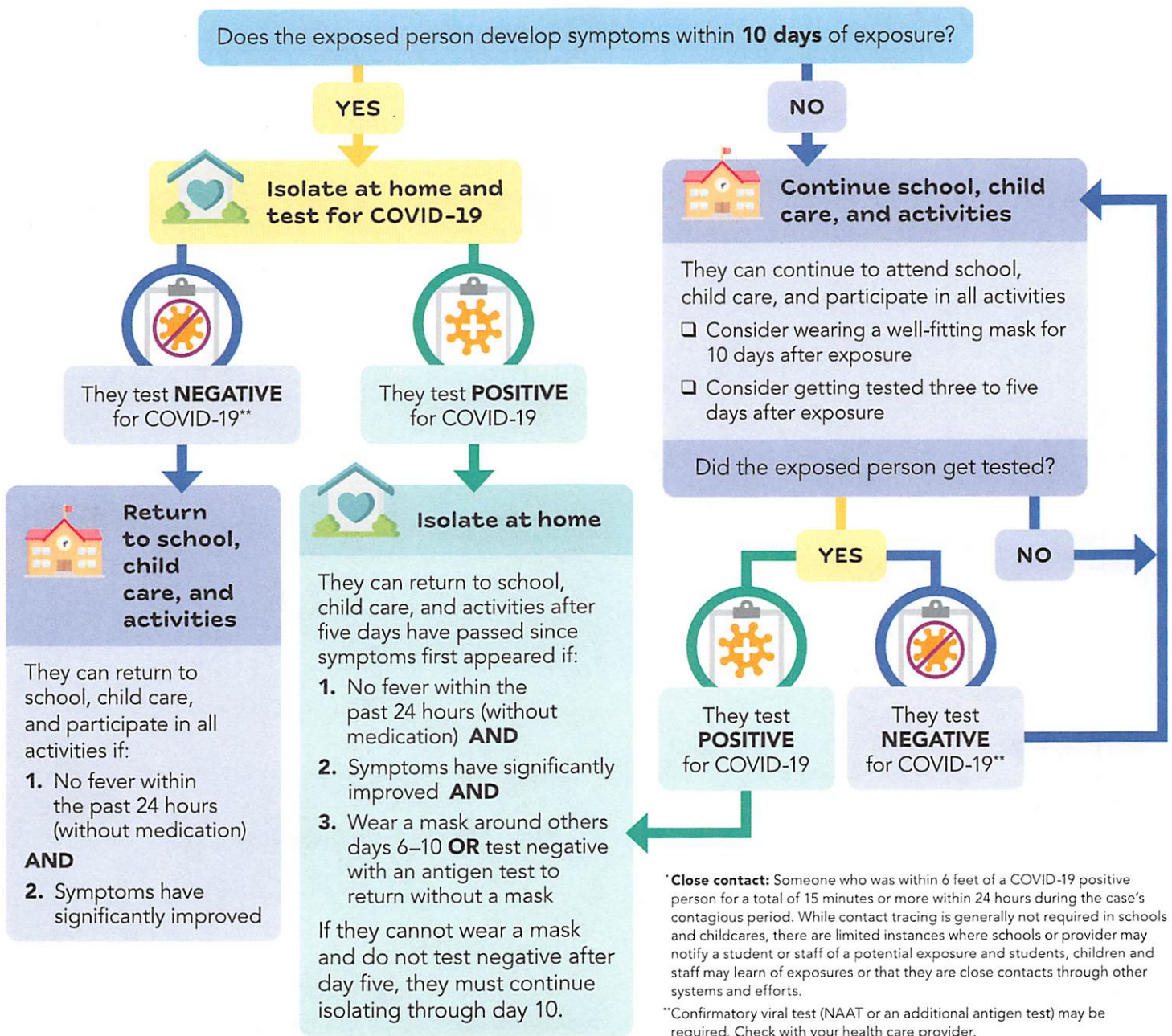
What to do if You Receive an Exposure Notification or are Identified as a Close Contact*



These recommendations are for K-12 schools, child care, and connected extra-curricular activities.

Regardless of vaccination status, the following guidelines are recommended:

- Continue to attend school, child care, and activities.
- Monitor for symptoms for 10 days after exposure.
- Consider wearing a well-fitting mask for 10 days after exposure.
- Consider getting tested three to five days after exposure.



What to do if a Person is Symptomatic



These recommendations are for K-12 schools, child care, and connected extra-curricular activities.

If a person has one or more of these symptoms:

