

# WELCOME CLASS OF 2026

Academic Orientation  
& Roadmap



# TRANSFORMATIVE JOURNEY

---



# TRANSFORMATIVE JOURNEY





**WE ARE READY FOR YOU –  
COME AS YOU ARE**

---

# WELCOME TO THE LA SALLE COMMUNITY!

## WE'RE HERE TO HELP.



Dr. Alex Macmillan  
Dean of Academics



Mr. Nicholas Coggins  
Director of Curriculum,  
Instruction, and Assessment



Mr. Jerry Evans  
Scheduler

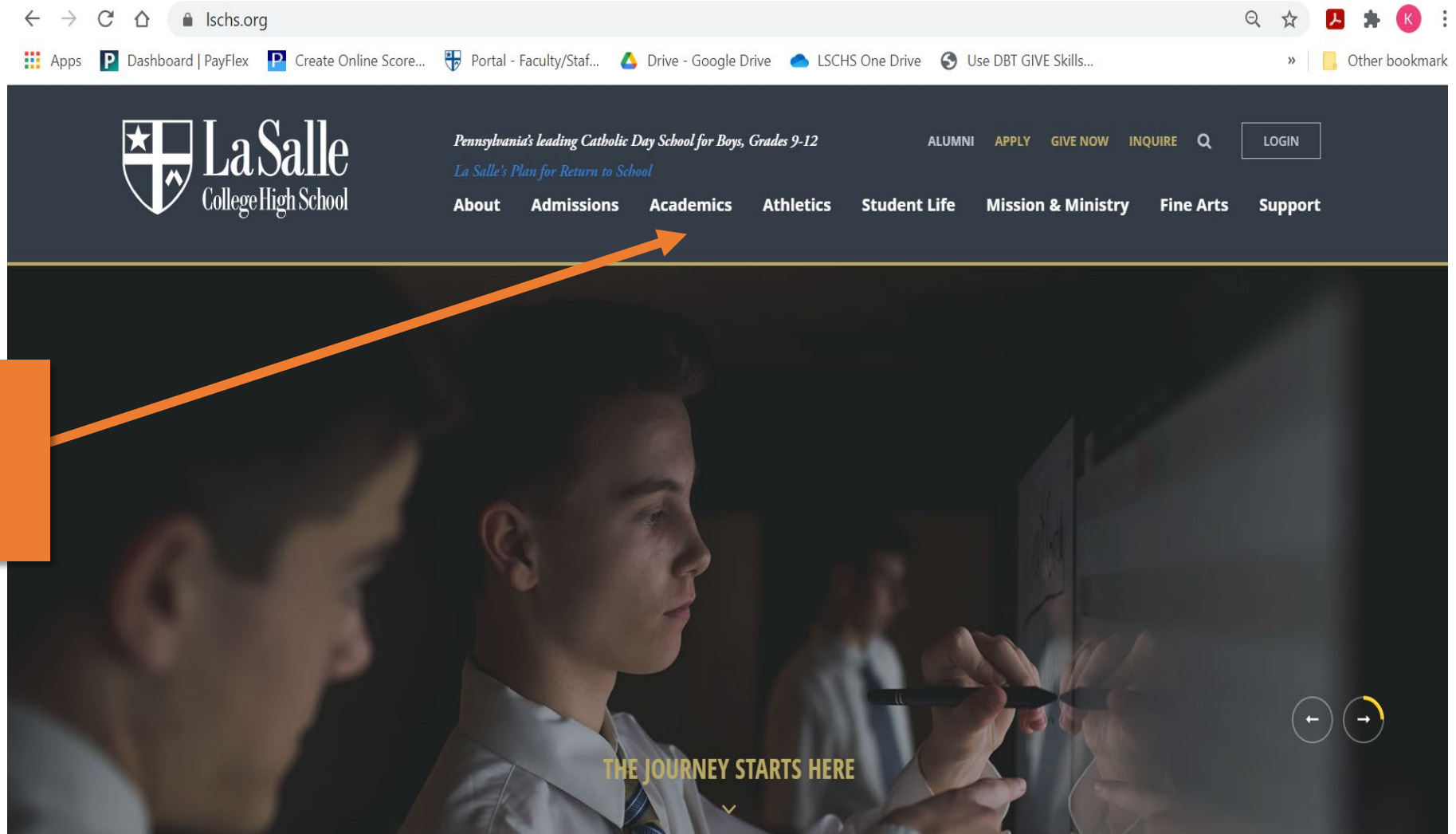


Mrs. Catrina Wheatley  
Administrative Assistant for  
Academic Affairs

A close-up photograph of a spiral-bound notebook. The notebook is open to a page with horizontal lines. A silver pen lies on the page. A circular white overlay is positioned on the right side of the page, containing the text "Communication Moving Forward". The text "Moving" is underlined. The background is slightly blurred, showing the spiral binding and the edges of other pages.

Communication  
Moving Forward

# www.lschs.org



Welcome  
Class of  
2026



Philadelphia's leading Catholic Day School for Boys, Grades 9-12

[ALUMNI](#) [APPLY](#) [GIVE NOW](#) [INQUIRE](#) [Q](#)

[LOGIN](#)

[About](#) [Admissions](#) [Academics](#) [Athletics](#) [Student Life](#) [Mission & Ministry](#) [Fine Arts](#) [Support](#)

[EXPLORE Ideas](#) | [Academic Departments](#) | [College Counseling](#) | [McShain Library](#) | [Academic & Student Life Back to School Information](#) |

[Transfer Students](#) | [Class of 2026 Welcome](#) | [Course Registration for 2022-2023](#)

» [ACADEMICS](#) » [CLASS OF 2026 WELCOME](#)

## CLASS OF 2026 WELCOME



### This Is La Salle



### Tasks and Events

<a href="#">Academic Orientation</a>
<a href="#">Placement Test Registration and Course Selection Questionnaire</a>
<a href="#">Virtual Information Sessions</a>
<a href="#">Diversity, Equity and Inclusion</a>
<a href="#">Online Forms</a>
<a href="#">Welcome Mass</a>

# CLASS OF 2026

## YOUR ADVENTURE BEGINS HERE...



### Class Welcome and Academic Orientation

**IN PERSON SESSIONS**  
March 20, 2022 | 10:30 am  
March 20, 2022 | 1:00 pm  
March 21, 2022 | 4:30 pm  
March 24, 2022 | 4:30 pm  
**VIRTUAL SESSION**  
March 31, 2022 | 7:00 pm



### Placement Tests

April 20-21, 2022  
April 26-27, 2022



### Complete Online Forms and Tasks by May 1, 2022

Family Profile, Transportation, Legacy Data, Guidance  
Transition, Order Gym Uniform, Obtain E-Mail and  
Passwords for Parents and Students



### First Day of Classes

August 18, 2022



### Complete Online Forms and Tasks by April 13, 2022

Placement Test Registration  
and  
Course Selection Questionnaire



### Virtual Information Sessions 7:00 pm (30 minutes)

Academic Overview | April 7, 2022  
Music | April 21, 2022  
Athletics | April 28, 2022



### Virtual Information Session 7:00 pm (30 minutes)

Student Life | May 2, 2022  
(Clubs and Activities)  
Technology | May 12, 2022



### Welcome Mass and Picnic

May 15, 2022  
4:00 pm



Philly's leading Catholic Day School for Boys, Grades 9-12

ALUMNI APPLY GIVE NOW INQUIRE LOGIN

About Admissions Academics Athletics Student Life Mission & Ministry Fine Arts Support

EXPLORE Ideas Academic Departments College Counseling McShain Library Academic & Student Life Back to School Information

Transfer Students **Class of 2026 Welcome** Course Registration for 2022-2023

ACADEMICS > CLASS OF 2026 WELCOME

## CLASS OF 2026 WELCOME



### This Is La Salle



### Tasks and Events

⊕ Academic Orientation
⊕ Placement Test Registration and Course Selection Questionnaire
⊕ Virtual Information Sessions
⊕ Diversity, Equity and Inclusion
⊕ Online Forms
⊕ Welcome Mass

# Roadmap



# Details

You are here

# Roadmap

# Details



You are here

# Roadmap



# Details

## By April 13<sup>th</sup>: Registration Tasks



- Open until April 13<sup>th</sup>
- Course Selection and Placement Test Registration Form

# Roadmap



# Details

## April Virtual Information Sessions

- No registration required
- All on Thursdays starting at 7:00 pm
- Links to the virtual sessions will be sent the day prior via email (Wednesday)
- All are optional but some strongly recommended
- Video recordings will be posted

# Roadmap



## Details



### Academic Overview April 7<sup>th</sup>

- Detailed explanation of La Salle's Program of Studies, featuring over 150 courses and 24 AP courses



### Music Program April 21<sup>st</sup>

- Highlights of La Salle's accomplished music program as well as information for summer evaluations



### Athletics Overview April 28<sup>th</sup>

- An overview of athletic teams, intramural programs, and sign-ups/registration for fall sports

# Roadmap



# Details

## Placement Testing

- April 20, 21, 26, & 27 @ 3:30pm
- Can Take Science & Language on Same Day
- Math Taken on Its Own

# Roadmap



# Details

## By May 1st: Registration Tasks



- Family Profile
- Legacy Data
- Guidance Transition
- Transcript and Medical Records

# Roadmap



# Details

## May Virtual Information Sessions

- No registration required
- Links to the virtual sessions will be sent the day prior via email
- All are optional but some strongly recommended
- Video recordings will be posted

# Roadmap



# Details



## Student Life - MONDAY, May 2<sup>nd</sup>

- Learn about clubs and activities, dress code, transportation, and more!



## Technology - May 12<sup>th</sup>

- Learn about technology requirements, how to access various systems, and everything else you'll need to know.

# Roadmap



# Details



## Welcome Mass May 15<sup>th</sup>

- Outdoor event
- Starts at 4:00 pm
- Rain date: May 17<sup>th</sup>

# Roadmap



# Details



## What happens in July and August?

- Course placement verification – July
- Summer work – July/August
- Back-to-School packet – Student schedules, textbook information, etc.

# Academic Program – At a Glance

	Freshman	Sophomore	Junior	Senior
Religion	✓	✓	✓	✓
English	✓	✓	✓	✓
Math	✓	✓	✓	?
Science	✓	✓	✓	?
World Languages	✓	✓	✓	?
History & Political Science	✓	✓	✓	?
Social Sciences		?	?	?
Physical Education	✓			
Innovation + Design	✓	?	?	?
Fine Arts	?	?	?	?
Group Advisory	✓	✓	✓	✓
<b>Electives:</b>	0-2	1-2+	1-2+	5+

Daily Schedule Regular Day			
Time		ACEG Day	BDFH Day
8:00	8:10	HR	HR
8:15	9:15	1	7
9:20	10:20	2	8
10:25	11:25	3	9
11:30	12:30	4	10
12:35	1:35	5	11
1:40	2:40	6	12

# Sample Schedule for a Freshman

## A Day

8:00-8:10	Homeroom
<b>Period 1</b> 8:15-9:15	Spanish 1
<b>Period 2</b> 9:20-10:20	Music or David Program or free period
<b>Period 3</b> 10:25-11:25	Lunch
<b>Period 4</b> 11:30-12:30	Integrated Science
<b>Period 5</b> 12:35-1:35	Religion
<b>Period 6</b> 1:40-2:40	Intro to Tech. & Design Group Advisory

## B Day

8:00-8:10	Homeroom
<b>Period 7</b> 8:15-9:15	Algebra 1
<b>Period 8</b> 9:20-10:20	English
<b>Period 9</b> 10:25-11:25	Lunch
<b>Period 10</b> 11:30-12:30	World Civilizations 1
<b>Period 11</b> 12:35-1:35	Physical Education/ Aquatics
<b>Period 12</b> 1:40-2:40	Foundations Art or free period



# Science - options

## Biology Honors

- Academic scholarship awardees
- High score on placement test

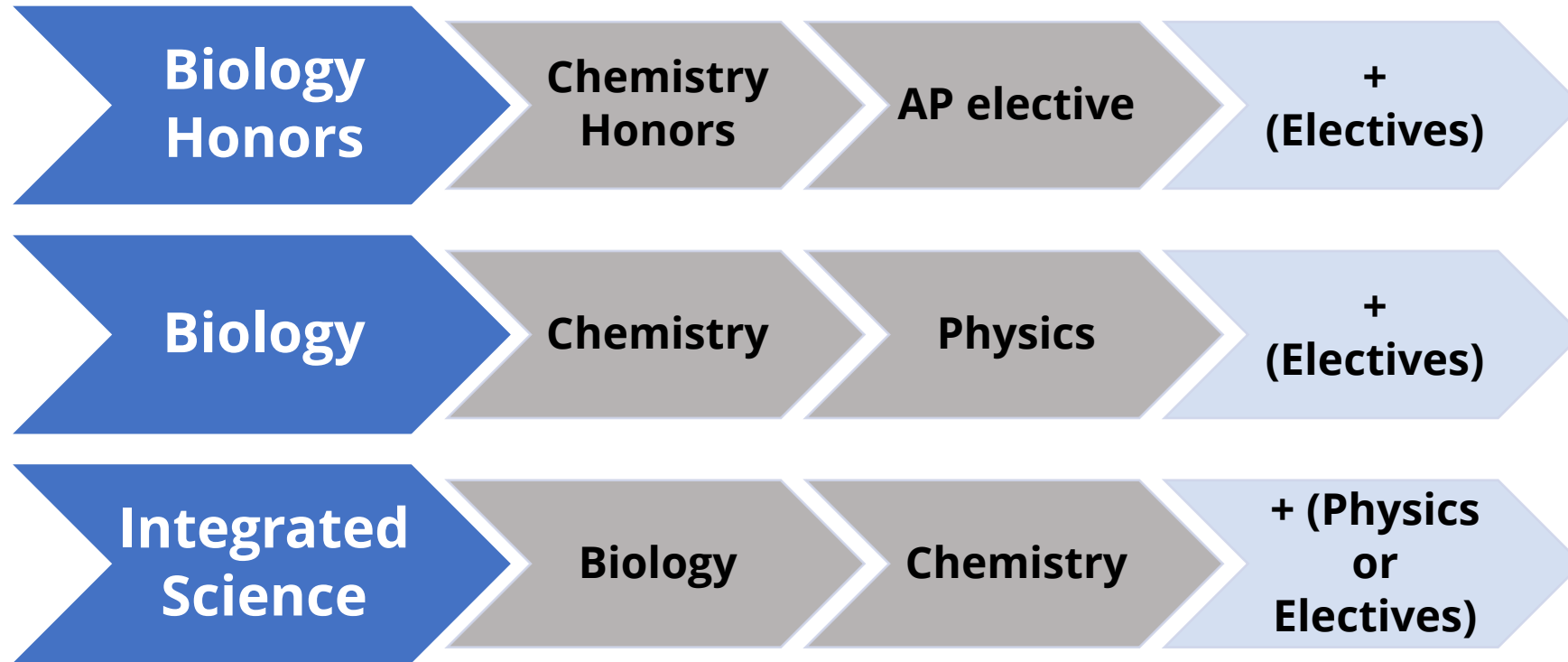
## Biology

- Any student who was not an academic scholarship awardee may take the placement test.

## Integrated Science

- Students who need a foundational science experience to prepare them for Biology in sophomore year.

# Science - Progression



## Other electives:

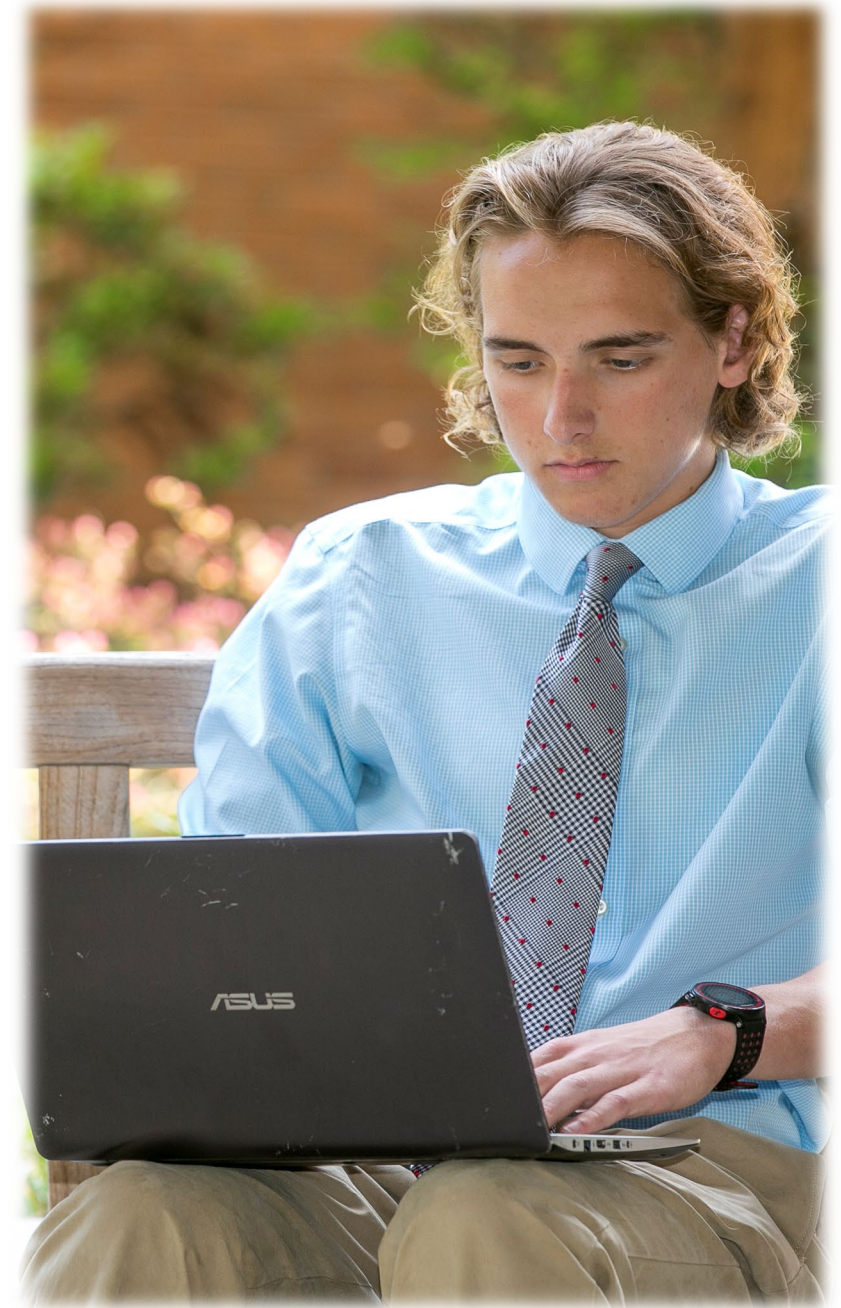
- AP Biology
- AP Chemistry
- AP Physics 1
- AP Physics 2

- Anatomy and Physiology Honors
- Zoology
- Forensic Science

- AP Physics C: Electricity and Magnetism (1 sem)
- AP Physics C: Mechanics (1 sem)
- AP Environmental Science
- Environmental Science

# Science Placement Test

- Rigorous assessment to gauge **basic science knowledge, data analysis skills, and math proficiency**
- **90 multiple choice** questions
- **60 minutes**
- **No calculators**





# **World Language – options:**

## **Chinese, Spanish, French, Latin**

### **Language – Level 1**

- **Beginning level, even if have had some exposure**

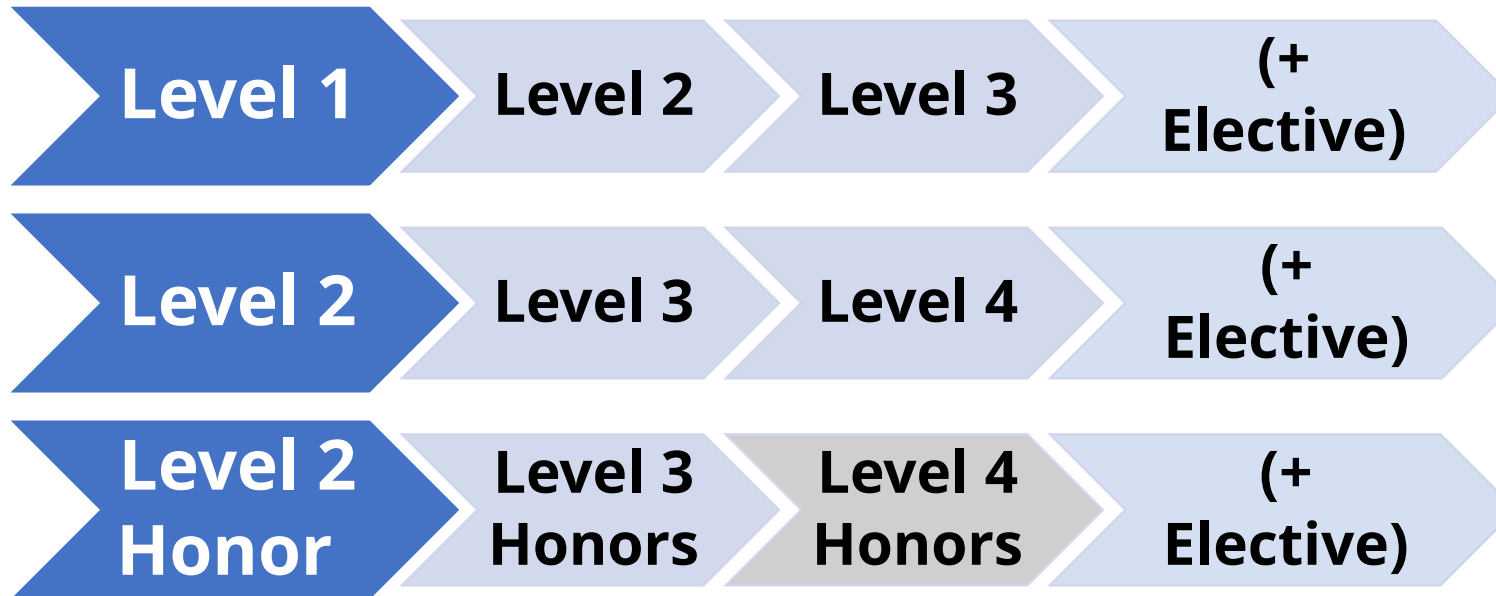
### **Language – Level 2**

- **Students who do well on level 1 placement test**

### **Language – Level 2 Honors**

- **Students who do very well on level 1 placement test**

# World Language - Progression

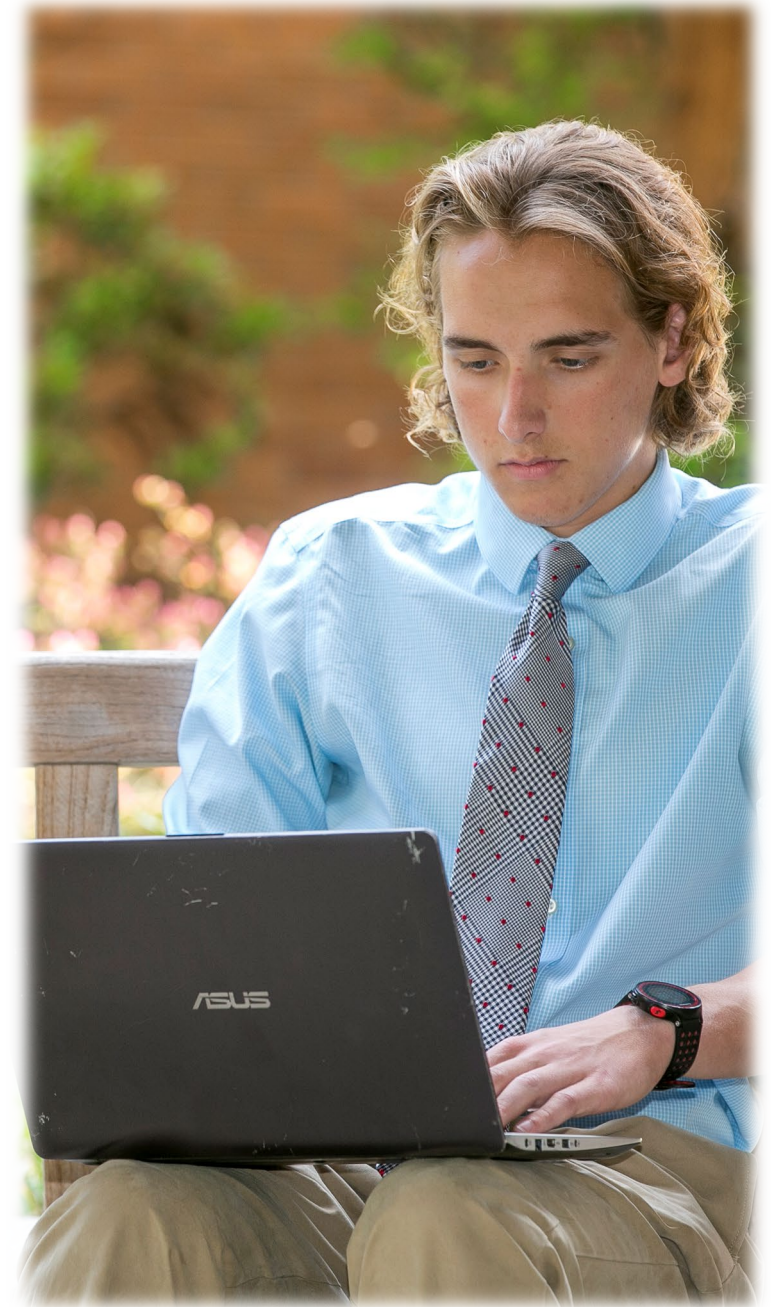


## Other electives:

- Students may double up on any languages
- Level 4 of any language
- AP Spanish, Latin, Chinese, French
- Independent Study

# World Language Placement Test

- **Multiple choice** questions, **fill in the blank** (e.g. verb conjugations), and **written sentences**
- About **60 minutes**



# Math- options



## Algebra 1 Y

- **Extra support** – additional class time, same curriculum

## Algebra 1

- **Majority** of students

## Algebra 1 Honors

- Students who did **not have a full-year of Algebra 1** but did have **high** math scores on Entrance Exam.

## Integrated Algebra 1 + Geo.

- Students who do **well** on Algebra 1 placement test, but not well enough to move to Algebra 2.
- Students who had **Algebra 1 in 7<sup>th</sup>** and **Geometry in 8<sup>th</sup> but** aren't ready for Algebra 2.

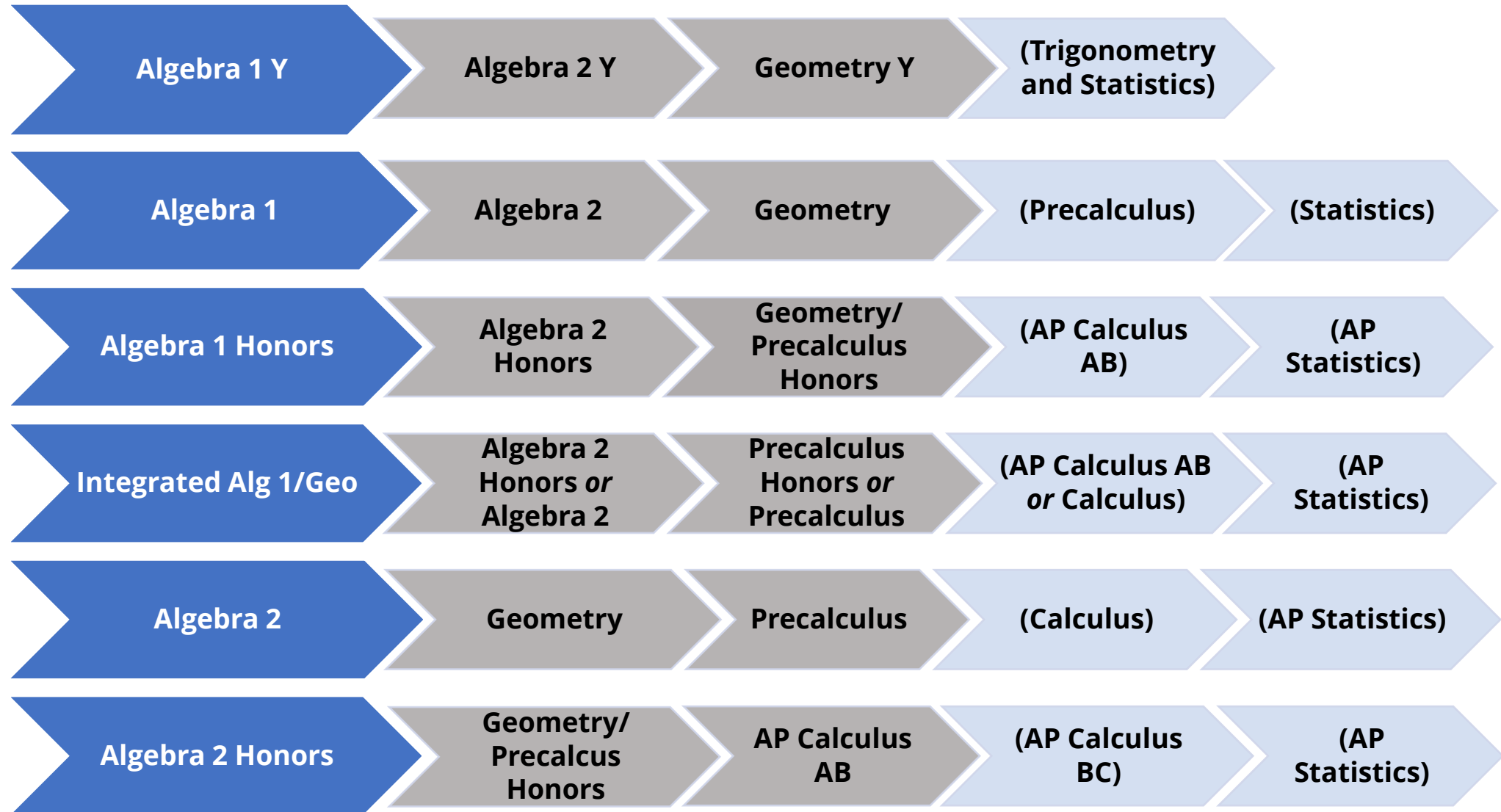
## Algebra 2

- Students who do **well** on Algebra 1 placement test.

## Algebra 2 Honors

- Students who do **very well** on Algebra 1 placement test.

# Math- Progression



# Math Placement Test

- Multiple choice questions and free-response questions
- **90 minutes** maximum
- Graphing **calculators** are acceptable but not necessary. Either way, need to show the work.



# English- options: Introduction to Literature and Composition

## English 9 Honors

- Academic scholarship awardees
- Students in 80<sup>th</sup> percentile in 1) Verbal, 2) Language, AND 3) Reading on Entrance Exam

## English 9

- Majority of freshmen

## English 9 Y

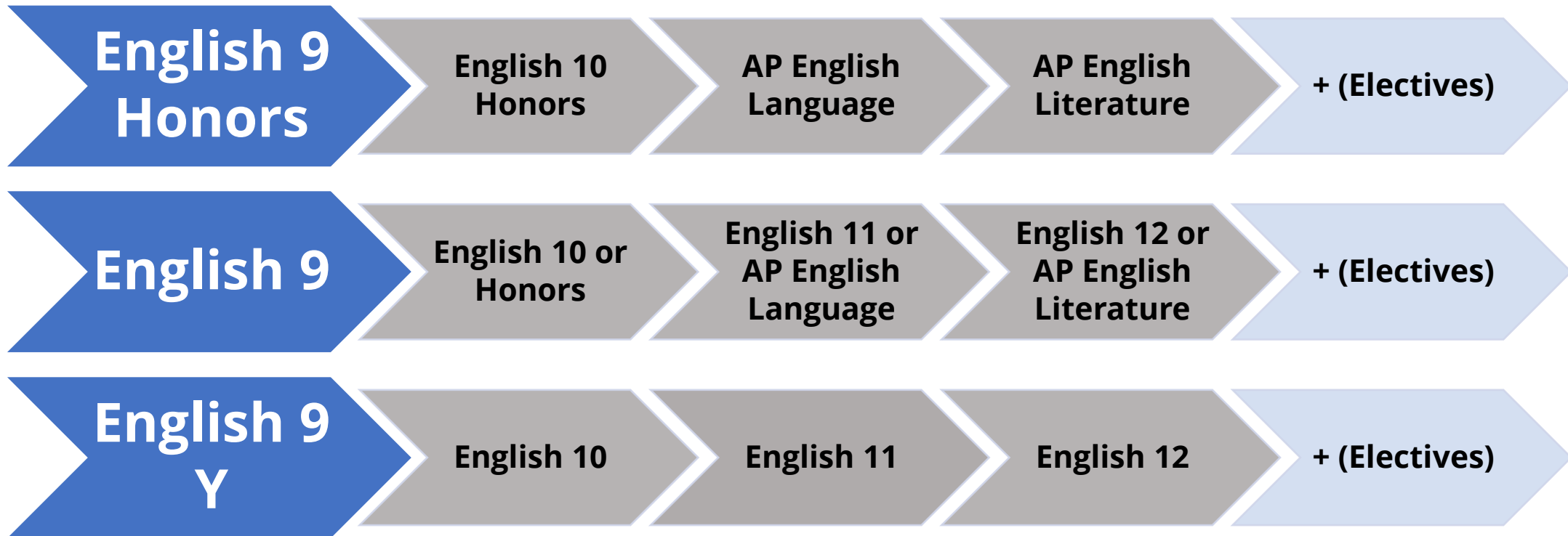
- Extra support – additional class time, same curriculum



# English - Progression

## Electives:

- Creative Writing I, II
- African American Literature
- Public Speaking
- Advanced Public Speaking



# History and Political Science- options:

## AP Human Geography

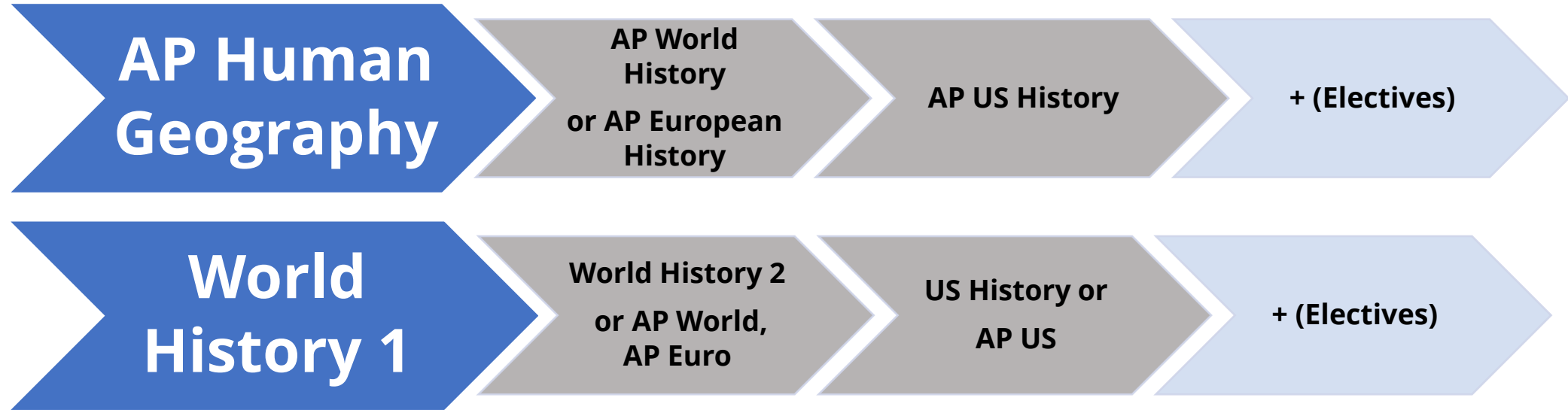
- Academic scholarship awardees
- Select other students – typically in the 96<sup>th</sup>-98<sup>th</sup> percentile composite score on Entrance Test

## World Civilizations 1

- Majority of freshmen



# History and Political Science- Progression



- AP Modern European History
- US Civil Rights
- Modern East Asia Studies
- AP US Government and Politics
- AP Comparative Gov and Politics

## Electives in **Social Sciences:**

- AP Macroeconomics
- AP Microeconomics
- Economics
- Psychology
- AP Psychology
- Introduction to Business and Finance
- Personal Finance and Investment



# Innovation and Design

## Introduction to Technology and Design

- All freshmen



# INNOVATION AND DESIGN DEPARTMENT

## 2022-23 COURSE CURRICULUM

### FRESHMAN REQUIREMENT

1001 - Introduction to Technology and Design

#### INFORMATION TECHNOLOGY

1024 - Networking Essentials  
1025 - Introduction to Cybersecurity  
1026 - Cloud Fundamentals  
1029 - Networking Internship

#### PROGRAMMING

1030 - Introduction to Programming  
1031 - Java Programming  
1032 - AP Computer Science A  
1033 - AP Computer Science Principals  
1089 - Digital Design Internship

#### ENGINEERING

1092 - Engineering Design  
1093 - Advanced Engineering Design  
1094 - Principles of Engineering  
1095 - Introduction to Robotics  
1089 - Digital Design Internship

#### GRAPHIC DESIGN

1050 - Introduction to Digital Design  
1051 - Introduction to Digital Design (Online)  
1081 - Advanced Visual Communication  
1089 - Digital Design Internship

#### WEB DESIGN

1070 - Web Design For Business  
1079 - Web Design Internship

#### VIDEO PRODUCTION

1052 - Introduction to Multimedia Journalism  
1060 - Introduction to Mobile Video Production  
1061 - Advanced Media Production - WEXPtv  
1069 - Multimedia Internship



# Fine Arts

Art

Foundations Arts

Chorus

Freshman Chorus

Music\*

Introduction to Music Performance

Instrumental Instruction



- **Music Evaluation for Placement:**  
**May 9 and 11 from 3:00-5:00**

# Religion

## Catholic Lasallian Identity

- **All freshmen**



# Additional Courses:



## Group Advisory 9

- All freshmen

## Physical Education/ Aquatics

- All freshmen

## Academic Support

- Students enrolled in the David Program

# Placement Tests

For students who **want to accelerate** their course loads, we require placement tests in...

- **Math**
- **Science**
- **World Languages** (Spanish, Latin, Chinese, or French)

Dates –

- **Wed, April 20**
- **Thurs, April 21**
- **Tues, April 26**
- **Wed, April 27**

Time – **3:30-5:30**

**Note** – Math on 1 day; can double Science and Language on 1 day



For **Music** – evaluations for placement

- **Dates** – **May 9 and 11**
- **Time** – **3:00-5:00** (10-minute time slot assigned)



La Salle  
College High School

*Pennsylvania's leading Catholic L*

About

Admissions

#### Admission Events

The Application Process

Tuition & Financial Aid

Transportation

#### Admissions Staff

Summer Programs

This is La Salle

Why La Salle?

# SUMMER PROGRAMS

*(VOLUNTARY)*

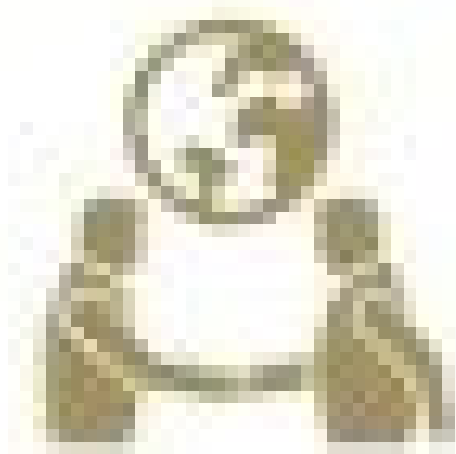


# Summer Work

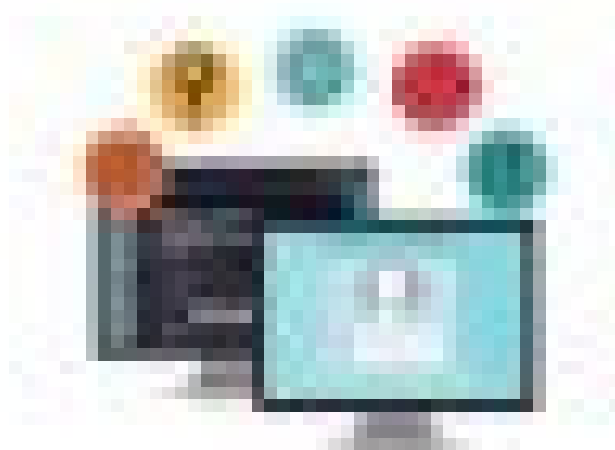


# LA SALLE COLLEGE HIGH SCHOOL

## CONCENTRATIONS PROGRAM



**GLOBAL BUSINESS**



**ENGINEERING**



**IT PROFESSIONAL**

# LA SALLE COLLEGE HIGH SCHOOL

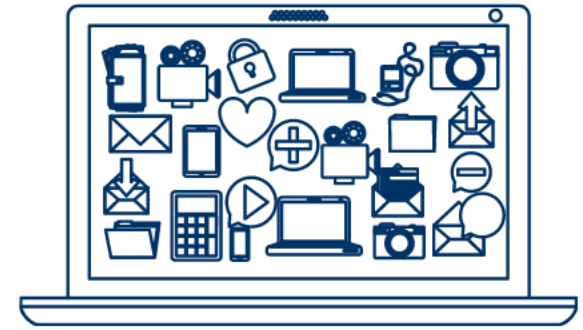
## CONCENTRATIONS PROGRAM



**GLOBAL BUSINESS**



**ENGINEERING**



**IT PROFESSIONAL**

# IT PROFESSIONAL

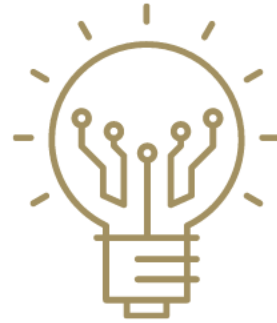
## CONCENTRATION PROGRAM

### ***REQUIRED COURSE***

- Intro to Technology and Design

### ***ELECTIVES***

- Networking Essentials
- Introduction to Cybersecurity
- Azure Cloud Fundamentals



### ***ALSO INCLUDES:***

**EXPERIENTIAL LEARNING &  
LEADERSHIP COMPONENT**

**SERVICE OPPORTUNITIES**

**PROFESSIONAL EXPERIENCE**

# Q & A



LaSalle  
College High School