



Join Running Start at Bellevue College!

Information Session @ Juanita HS

3/18/2022

runningstartnewstudent@bellevuecollege.edu
<https://www.bellevuecollege.edu/runningstart>

Join Running Start at Bellevue College!



Anastasia Whitaker – Running Start New Student Liaison

Jonathan Harrington – Program Specialist Assisting Q & A

Email us at runningstartnewstudent@bellevuecollege.edu

Visit our website: <https://www.bellevuecollege.edu/runningstart>

What is Running Start?

- Running Start was created by the *Learning by Choice* bill in 1990. This bill determined that:
 - High School students can earn college credits.
 - Public School districts in Washington State pay for the tuition for the approved amount of college credits (for 100 and 200 level courses) for Running Start students.
 - Running Start students are responsible for all class and student fees, so the program is not completely free.
- Running Start is available at all Washington State Community & Technical Colleges
- Bellevue College Running Start has around 2,800 students enrolled

Running Start Fee Waiver Petition Form

- Running Start students may be eligible for our Fee Waiver if any of the following applies to them:



- The Fee Waiver Petition form is available on our webpage <https://www.bellevuecollege.edu/runningstart/navigation/forms/>
- Students need to email this form and required documentation to chsprograms@bellevuecollege.edu no later than the 5th day of the quarter.

Running Start is Dual Enrollment

- **Dual Enrollment** is when a student is enrolled at both a high school and a college.
- Running Start students are earning both high school and college credits at the same time.
- Classes taken through Running Start can be used for high school graduation requirements, associate's degree requirements, as well as other degree programs such as bachelor's degrees.
- **1 High School credit = 5 Bellevue College credits**
- Use your **Course Equivalency** sheet from your school district to know exactly what classes at Bellevue College will meet your specific high school graduation requirements. Students can obtain this sheet from their high school counselor.

Running Start Enrollment Options

- Running Start students can enroll as **full-time** or **part-time** students.
 - **Full-time** students typically take 15 credits (three 5-credit courses) per quarter.
- Running Start students can take any course at Bellevue College as long as they meet the **prerequisites** for the course.
 - **Prerequisites** are requirements that students need to meet in order to enroll in a course. Requirements are often having completed a specific course with a certain grade or placement into the course or a specific course level.
 - For example: [ENGL& 101 English Composition I • 5 Cr.](#)

Prerequisite: Placement by assessment or ENGL 092 or 093 with a C- or better.]

Enrollment in specific courses at Bellevue College is never guaranteed even if the course is needed for a high school graduation requirement.

Running Start Eligibility

To participate in the Running Start program students must be both of the following:

- A high school junior or senior
- Enrolled in a public high school in Washington state.

No GPA Requirements because Bellevue College is an Open Campus

Bellevue College **ACADEMIC POLICY**

- Bellevue College is committed to the academic success of its students.
- The college identifies and alerts students who are not making satisfactory academic progress and provides those students with assistance to improve their academic performance.
- The Academic Standing Policy applies to all students, with limited exceptions.
- Students must earn a **cumulative** and **quarterly** Grade Point Average (GPA) of 2.0 or higher to remain in good academic standing and off of academic probation.
- The college applies progressive consequences for students who do not achieve a good academic standing at the end of each quarter.

For more information: [policy #3200](#) and [3200p Academic Standing Procedures](#).

Academic Standing Levels

- Level 1: [Academic Concern](#)
- Level 2: [Academic Intervention](#)
- Level 3: [Academic Restriction](#)
- Level 4: [Academic Dismissal](#)

Student Conduct Code

All students are held accountable to the **Student Conduct Code of Bellevue College** which prohibits cheating, plagiarizing, forgery, fighting, harassment, bullying and more.

Students can be suspended or dismissed from Bellevue College for misconduct.

Learn more about the Student Conduct Code at <https://www.bellevuecollege.edu/studentconduct>

Running Start Advising & Educational Planning

- At Bellevue College, we have two advisors specifically for Running Start students. Advising is available via email, phone calls, or video meetings.
- Students can meet with an advisor to plan how to meet their high school graduation requirements, plan how to earn an associates degree, find resources on campus, discuss their plans for after high school, and more.
- Before meeting with an advisor students must:
 - Complete all admissions steps and be cleared to register for classes.
 - Meet with their high school counselor to confirm their remaining high school graduation requirements and obtain their districts course equivalency sheet to determine which courses at Bellevue College will fulfill those requirements.

Webpage:

<https://www.bellevuecollege.edu/runningstart/navigation/advising-educational-planning/>

Disability Resource Center (DRC)



- If Running Start students have an IEP or a 504 plan at their high school they may be eligible for accommodations at Bellevue College through the DRC.
- The accommodations must be arranged through the DRC by the student and updated each quarter.
- High school accommodations are different from college accommodations. Meet with the DRC to learn more about what your accommodations could be.

Webpage: <https://www.bellevuecollege.edu/drc>

Email: drc@bellevuecollege.edu

Leveraging your College Credits with Running Start



- **Utilize your credits to give you a head start in the Pathways of interest**
 - Research the college of your dreams to prepare you for the prerequisites ahead
 - Major ready vs Non-Major ready
- **Earn an Associates to remain the most competitive as well as locking in that Transfer agreement between colleges in Washington State.**
 - This tells Admission Boards that you can handle the rigor & complete the degree!
 - Work with our Running Start Educational Advisors to assist in your planning and engagement!
- **Go beyond the classroom**
 - STEM TO STERN Program
 - Internships
 - Volunteer
 - Service Learning



runningstartnewstudent@bellevuecollege.edu
<https://www.bellevuecollege.edu/runningstart>

Running Start is only during Fall, Winter, and Spring quarters.

Students are allowed to take classes over the summer if they would like, however, they will be responsible for the tuition as well as class and student fees.

FALL 2022:

- Phase 1 deadline (all enrollment and admissions steps completed)
Friday June 3, 2022.
- Phase 2 deadline (all enrollment and admissions steps completed)
Friday September 9, 2022 (this date is subject to change).
- [Bellevue College Academic Calendar](#)

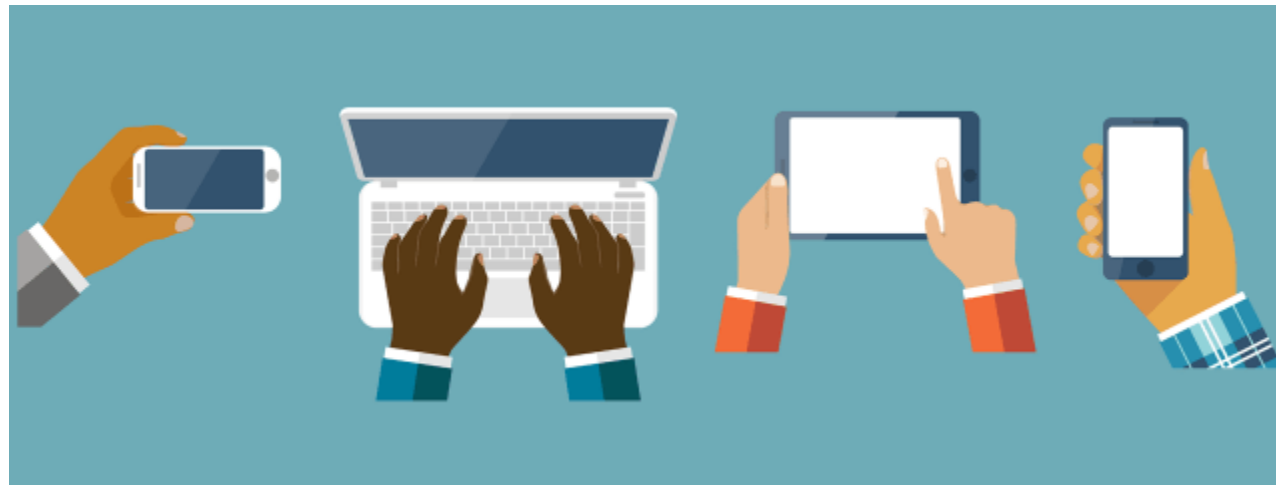
Quarter Begins

September 19

Quarter Ends

December 8

How to Apply for Running Start @ Bellevue College



1. Complete the Intent for Running Start Form

Running Start Intent Form

Complete the Running Start Intent Form.

Running Start Intent

1.

Running Start Intent Form Active Link

The screenshot shows the 'Running Start Intent Form' page on the Bellevue College website. The page header includes the college logo and navigation links for Register, Online Services, and Canvas. A search bar is located in the top right. Below the header is a navigation menu with tabs for CHSP Home, Career Education Options, College in the High School, Running Start (which is active), Summer Enrichment, Tech Prep, and Contact. The main content area is titled 'Running Start Intent Form' and shows 'Step 1 of 3' with a progress bar at 33%. The primary question is 'Do you qualify for Running Start Admission Fee Assistance? *'. Below this, a paragraph explains that admissions cost \$32.00 and lists seven eligibility criteria. At the bottom, there are two radio button options: 'Yes I qualify' and 'No I do not qualify'. A large blue arrow points from the 'No I do not qualify' option back to the 'Yes I qualify' option. To the right of the 'No I do not qualify' option is a 'Next' button. A 'Return to Running Start' button is located in the top right of the main content area. A sidebar on the right lists 'Available Forms' with links to various forms, including the 'Running Start Intent Form'.

BELLEVUE COLLEGE Register Online Services Canvas

Running Start Forms

CHSP Home Career Education Options College in the High School **Running Start** Summer Enrichment Tech Prep Contact

Running Start Intent Form

Step 1 of 3

33%

Do you qualify for Running Start Admission Fee Assistance? *

Admissions to Bellevue College is \$32.00 and will be charged to your student account when your application is processed. You qualify for Bellevue College Running Start Admissions Fee Assistance if any of the following statements are true:

- You have received or are eligible to receive an ACT or SAT testing fee waiver.
- You are enrolled in or eligible to participate in the Federal Free or Reduced Price Lunch program (FRPL).
- Your family's annual income falls within the Income Eligibility Guidelines set by the USDA Food and Nutrition Service.
- You are enrolled in a federal, state, or local program that aids students from low-income families
- Your family receives public assistance.
- You live in federally subsidized public housing, a foster home, or are homeless.
- You are a ward of the state or an orphan.

Yes I qualify

No I do not qualify

Next

Last Updated March 29, 2021

Return to Running Start

Available Forms

- [Running Start Academic Dismissal Appeal Form](#)
- Running Start Intent Form**
- [Request More Information](#)
- [Learn More Running Start](#)
- [New Running Start Student Enrollment Verification Form Submission](#)
- [Running Start Fee Waiver Form](#)
- [Returning Student Enrollment Verification Form Submission](#)

2. Complete Bellevue College SBCTC Application

Bellevue College Application

Complete the Bellevue College Application.

Bellevue College Application

2.

<https://apply.ctc.edu/register>



READY FOR WHAT'S NEXT?

Career training and university transfer at a fraction of the cost



Create Username *

Create a Username and Password

Password *

Confirm Password *

Title

First Name *

Middle Name

Last Name *

Name Suffix

<https://www.bellevuecollege.edu/runningstart/navigation/admissions>

2.

SBCTC Application Example

When the student Applies to Running Start.....



Start A New Application

Immediately below this page, you will find detailed explanations for each section.

Logout

College *

B Bellevue College

I will be enrolling as a... *

First Year

Program *

Non-Award Seeking

Term *

Fall 2022

Degree or Certificate I am seeking... *

Non-degree - Other

Academic Focus Area

Apply

Explore our Programs

In-progress applications

Instructions Guide

Submitted Applications



The student will receive an email from Enrollment services after you submit your SBCTC Application.

The student will receive an email from runningstartnewstudent@bellevuecollege.edu with the steps you must complete for Running Start Admissions.

Student ID (SID) included in acceptance letter

Email Runningstartnewstudent@bellevuecollege.edu with any questions, concerns, compliments; we will call to action!

MOST IMPORTANT! Read the entire email and follow all of the directions

Applying Best Practices

- **Deadline:** [Phase 1](#) State College application and RS admissions steps all completed by June 2, 2022.
- **Deadline:** [Phase 2](#) State College application and RS admissions steps all completed by September 9, 2022.
- Be sure to check your E-mail that you provided on the Running Start Intent and SBCTC Application – allow time for the processing to happen – Deadlines are communicated via E-mail and our website.
- Use your legal name that will match the High School Records.
- **Join us Saturday, March 19th on Microsoft TEAMS for a Running Start Online Information Session for Fall 2022 to learn more!**

<https://www.bellevuecollege.edu/runningstart/navigation/admissions>

Running Start Fall 2022 Information Session Schedule

Date	Start Time	Location	Join Button
Saturday March 12th	10:00 am	Online	Join Here
Saturday March 19th	10:00 am	Online	Join Here
Saturday March 26th	9:00 am 11:00am 2:00 pm	Building N Room 201	Sign-up Here
Saturday April 9th	10:00 am	Online	Join Here
Saturday April 23rd	9:00 am 11:00am 2:00 pm	Building N Room 201	Sign-up Here
Saturday April 30th	10:00 am	Online	Join Here
Saturday May 7th	9:00 am 11:00am 2:00 pm	Building N Room 201	Sign-up Here
Saturday May 14th	10:00 am	Online	Join Here



BC Vaccination Attestation (Confirmation) and Exemption Requirements and Information to protect the health and safety of the Bellevue College campus community and the public, the College requires all faculty, staff and students to be fully vaccinated against COVID-19 with an authorized vaccine unless an individual receives an authorized exemption.

[BC Student COVID-19 Vaccination Attestation \(Confirmation\) Form \(tfaforms.net\)](https://www.bellevuecollege.edu/covid19/)

All new students will have a Vaccination Attestation hold until they complete that task; before any registration.

Running Start Voices Video



<https://player.vimeo.com/video/588038373>



The Center for High School Programs Office

- Bellevue College Main Campus U-Building | 2nd Floor | [Check website for Updates](https://www.bellevuecollege.edu/runningstart/navigation/runningstartinfoschedule/)
<https://www.bellevuecollege.edu/runningstart/navigation/runningstartinfoschedule/>



Welcome to Bellevue College

