

Welcome to Central Middle School



EDEN PRAIRIE SCHOOLS
Inspiring each student every day

Central Middle School is committed to inspiring EACH student every day

This means helping your learner grow and reach their full potential in a safe, nurturing environment. Academic opportunities are available for each CMS student at every stage of their development. Together with our strong parent community, we lead our students to take ownership of their learning while exploring their interests and finding new passions.



Why do families love Eden Prairie Schools?



Outstanding parent approval

Our excellent teaching staff earned a 98% approval rate among parents.



Unparalleled opportunities

We offer the largest variety of athletic, academic and artistic options in the state.



Top-rated school district

Eden Prairie Schools earned the highest possible rating of "A+" from *Niche.com*.

The CMS Difference

Be Safe. Be Responsible. Be Kind.

At Central Middle School, all students work together with their teachers to embed three character pillars – Be Safe, Be Responsible and Be Kind – into everyday learning. Our staff use the Positive Behavioral Interventions and Supports (PBIS) framework to develop students into outstanding community members committed to learning and growth.



New state-of-the-art classroom wing, performing arts center and gym

What do parents have to say?

"With four kids in Eden Prairie Schools and our last now at CMS, I continue to be amazed by the school, faculty, staff and opportunities offered to all students. CMS challenges and supports each student in different ways but always exactly as they need, setting each child up for success and preparing them for high school and beyond. We are so grateful to be a part of this community and wouldn't want our kids to be at any other school."

-Erika Willette, Parent



CMS Academic Excellence

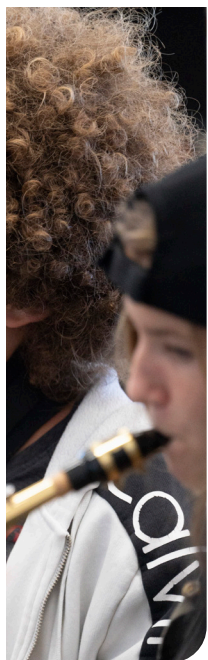
- Our test scores are consistently above the state average.
- Well over 70% of our students enroll in 1 or more Enriched, Advanced or Honors courses.



Co-Curricular Activities

From athletics and the arts to student clubs and organizations, there are exciting opportunities for each student. The clubs and activities offered reflect the voices and interests of our students. Learn more about the variety of activities available to your student at edenpr.org/CMS.

Inspiring each st



At Central Middle School, Eagles learn the #CMSWay

CMS is a wonderful place for students, staff and families. What makes us an excellent school?

- **A SMALL school experience with BIG opportunities:** Each CMS student is assigned to a team with a common set of teachers and students to maximize relationship building. It's how we provide a small-school experience alongside big-school opportunities.
- **World class facilities:** New to CMS in 2022 are a state-of-the-art classroom wing, gym and performing arts center, plus an expanded cafeteria and redesigned classrooms.
- **Excellent course offerings:** Our variety of challenging courses allow students to consistently progress at a pace that is right for each individual, potentially earning high school credits. Rigorous interest-based courses prepare students to take advantage of career-focused EP Pathways, like Marketing, Health Science, Finance or Manufacturing, at the high school.
- **Safety is our priority:** Our supportive school culture among staff and students combined with our significant security measures provide a safe learning environment, which is why 93% of students surveyed report feeling safe at school.
- **Personalized Learning:** At CMS, we believe each learner has unique talents and gifts. By personalizing learning, teachers work to nurture student strengths, while students are encouraged to take ownership of their learning and explore their interests and passions.
- **4Cs:** Our teaching practices emphasize the 4Cs: creativity, collaboration, critical thinking and communication. These are the skills essential for both career and citizenship.
- **Gifted Services:** Students have access to our comprehensive gifted programming options, including our rigorous continuation of the elementary Mosaic program.
- **Orchestra, choir and band:** Students are invited to engage in one or more of our musical education opportunities.
- **Exceptional technology:** Teachers and students utilize a variety of technology tools to enhance each student's learning experience.

tudent every day



Parent Involvement

CMS and our PTO work collaboratively to enhance the educational environment for students. The PTO helps fund personalized learning spaces, student field trips, as well as team and character building activities throughout our school. All families are invited to participate in our yearly major fundraiser. We encourage our families to be involved in the CMS community.

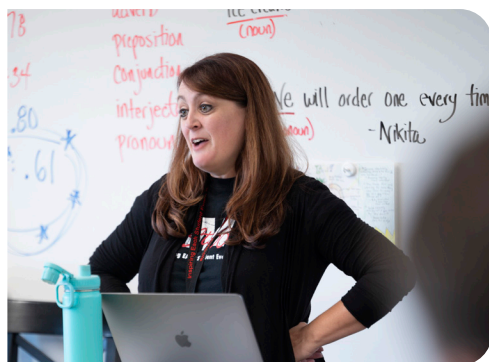
Learning from
the best:
83%
of teachers have
master's degrees or
higher

Principal
**Nate
Swenson**

**6-8
grades**

Connect with
Eden Prairie Schools

Facebook: @EdenPrairieSchools
Instagram: @EdenPrairieEagles
YouTube: @EdenPrairieSchools
Twitter: @EPS272



Ready to register?

We're excited for you to join the Eden Prairie family! Visit us online at edenpr.org/register or visit us in person at 8100 School Road in Eden Prairie (Monday-Friday, 7:30 a.m. - 4:30 p.m.)

Registration questions? Contact our Welcome Center:
952-975-7008 or email Register4EP@edenpr.org

Central Middle School

8025 School Road • Eden Prairie, MN 55344
Office: 952-975-7300 • EPEaglesCMS@edenpr.org
School hours: 9:25 a.m. - 4:07 p.m.
edenpr.org/CMS