

# Norwich Anticipating Significant Tax Rate Increase

## The Vermont Pupil Weighting Study

### What Is A Pupil Weight?

Vermont education funding and local tax rates are based on school spending per equalized pupil. Equalized pupils are determined by applying weights to student counts, recognizing that certain categories of students cost more to educate. Examples of these categories are english language learners, students from small, rural schools and students in poverty.



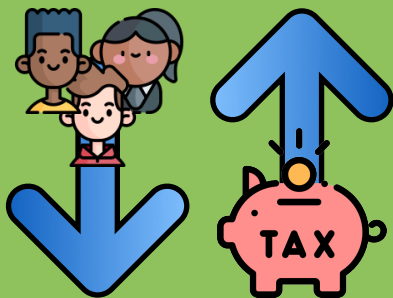
+1.03



+.39



+.21



### Why Is This Important?

This is important because pupil weights have a big impact on the local education property tax. Equalized pupils are used to determine school funding. When the number of equalized students goes down, the tax rate goes up. Conversely, if the equalized student count goes up, a town could see their tax rate go down.

### Why Is This Being Changed?

In 2018, the VT Legislature commissioned a study of the existing student weights. The study found that the current weights were not scientifically derived and recommended new weights that more accurately reflect the real costs associated with educating these different categories of students.



### What Does This Mean For Norwich?

Norwich will see a significant decrease in equalized pupils with the new weights. This could result in a tax rate increase of nearly 30%.



**+30%**

### What Can I Do?

While the new weights have been determined, the VT Legislature is still considering how to implement them. Learn more at the link below including how to contact your Senators and Representatives.

For more information go to: <https://www.sau70.org/norwichweightingstudy>