

LEA Name : Unionville-Chadds Ford SD
Address : 740 Unionville Road
Kennett Square , PA 19348

County : Chester
AUN Number : 124158503
LEA Type : SD

Annual Financial Report Accuracy Certification Statement

For Fiscal Year Ending

6/30/2021

Pennsylvania Department of Education

&

Office of Comptroller Operations

PDE-2056: Intermediate Unit

PDE-2057: School District, AVTS/CTC, Charter School,
and Special Program Jointure

CERTIFICATION: By signing this page I agree that the electronic data submitted is a complete and accurate statement of the financial operations and status of the local education agency for the fiscal year. It has been prepared in accordance with generally accepted accounting principles and established Commonwealth of PA reporting guidelines.



Chief School Administrator Signature

11.24.21

Date



Board Secretary Signature

11/24/2021

Date

Candace Brown

Contact Person

cabrown@ucfsd.net

Contact Person E-mail Address

(610)347-0970

Ext :3320

Contact Person Telephone Number

(610)347-0976

Contact Person Fax Number

Audit Certification
Annual Financial Report:
For Fiscal Year Ending **6/30/2021**
(Pursuant to PA School Code Section 218(b))


LEA Name : Unionville-Chadds Ford SD
AUN Number : 124158503
County : Chester

Audit Certification Due: 12/31/2021

This certification is applicable to the Annual Financial Report data submitted through the Consolidated Financial Reporting System (CFRS).

CERTIFICATION: By signing this page I agree that the financial statements of the school have been properly audited as noted above pursuant to Article XXIV, and in the auditor's professional opinion, the Annual Financial Report (PDE-2057) submitted through CFRS is materially consistent with the audited financial statements.

Chief School Administrator



Signature

11.24.21

Date

Board Secretary



Signature

11/24/2021

Date

Candace Brown

Contact Person

cabrown@ucfsd.net

Contact Person E-mail Address

(610)347-0970 Ext :3320

Contact Person Telephone Number

(610)347-0976

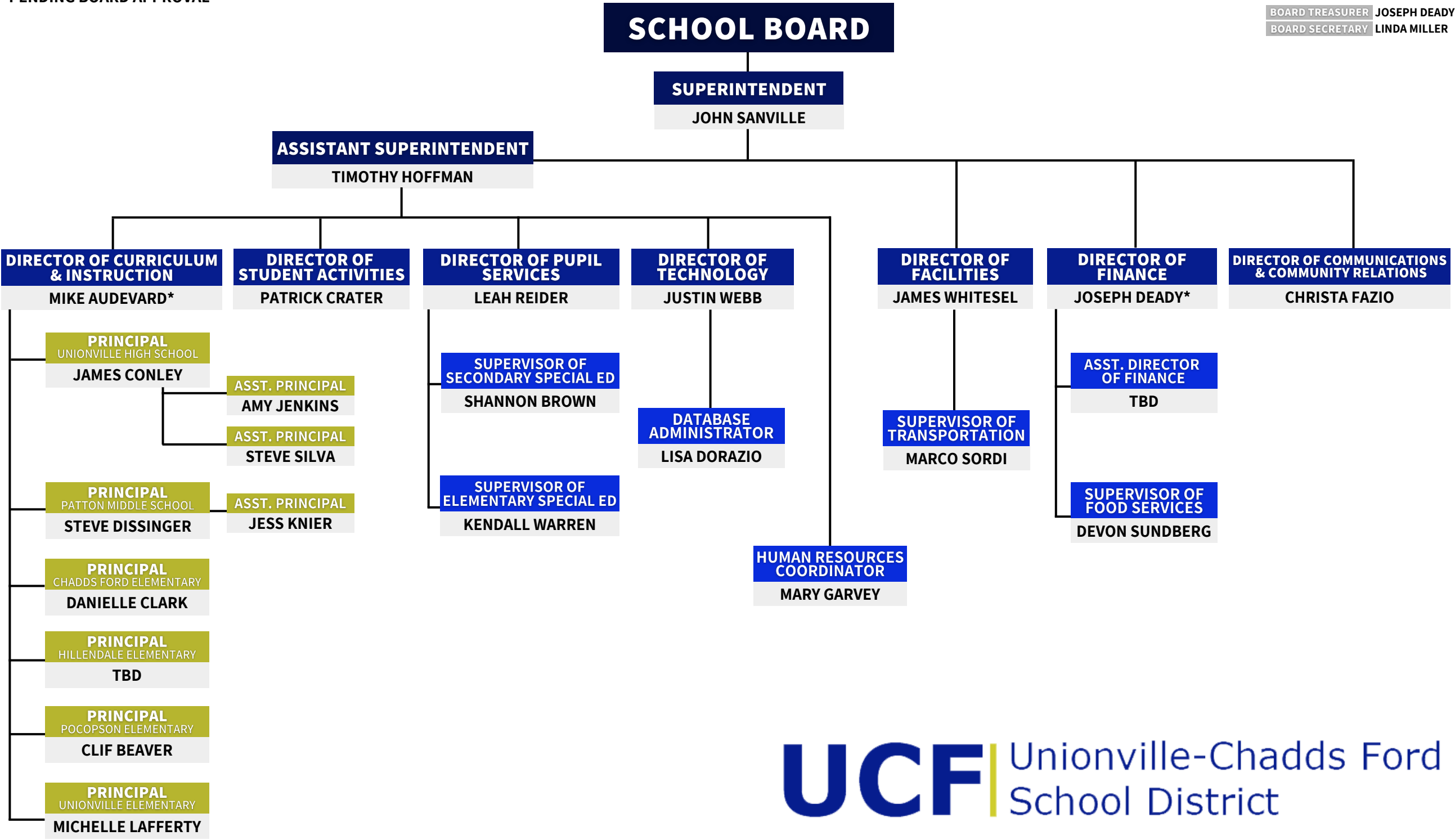
Contact Person Fax Number

ORGANIZATIONAL CHART OF

UNIONVILLE-CHADDS FORD SCHOOL DISTRICT

*PENDING BOARD APPROVAL

BOARD TREASURER JOSEPH DEADY
BOARD SECRETARY LINDA MILLER





Book	Policy Manual
Section	600 Finances
Title	GASB Statement 34
Code	622
Status	Active
Adopted	January 20, 2015

Purpose

The Board recognizes the need to implement the required accounting and financial reporting standards stipulated by the Pennsylvania Department of Education.

The primary objectives of implementing the Governmental Accounting Standards Board (GASB) Statement 34 are to assure compliance with state requirements, and properly account for both the financial and economic resources of the district.

Authority

Participation of the school district in any such activity shall be in accordance with Board policy.[\[1\]](#)[\[2\]](#)

Delegation of Responsibility

The responsibility to coordinate the compilation and preparation of all information necessary to implement this policy is delegated to the Director of Business and Operations.

The designated individual shall be responsible for implementing the necessary procedures to establish and maintain a fixed asset inventory, including depreciation schedules. Depreciation shall be computed on a straight-line basis over the useful lives of the assets, using an averaging convention. Normal maintenance and repairs shall be charged to expense as incurred; major renewals and betterments that materially extend the life or increase the value of the asset shall be capitalized. A schedule of accumulated depreciation shall be consistent from year to year. The basis for depreciation, including groups of assets and useful lives, shall be in writing and submitted for review to the Board.

The Director of Business and Operations shall prepare the required Management Discussion and Analysis (MD&A). The MD&A shall be in the form required by GASB Statement 34 and shall be submitted to the Board for approval, prior to publication.

Prior to submission of the MD&A for Board approval, the district's independent auditors shall review the MD&A, in accordance with SAS No. 52, "Required Supplementary Information".

Legal	1. 24 P.S. 218
	2. 24 P.S. 613
	Governmental Accounting Standards Board, Statement No. 34

<u>Val Number</u>	<u>Description</u>	<u>Justification</u>
30410	Revenue Detail: AFR amount must equal or exceed PDE FAI System amount. 6944, AFR Rev Detail: \$243,827.83 6944, PDE FAI System: \$448,946.28	Revenue was received that was accrued to prior years.
42420	Expenditure Detail: Total current year 2700-513 expenditure varies from prior year by 10%. Correct the data or enter a justification. 2700-513, AFR Exp Detail: \$0.00 2700-513, PY AFR Amount: \$1,380.00	No contracted carriers in the 2020/2021 school year.
50600	HCB Schedule, Enterprise Fund Total cannot exceed REP report for Object 200, all Functions total reported for all Enterprise Funds. HCBS, Enterprise Fund Total: \$0.00 REP, Object 200, Enterprise Fund: \$-727,081.00	The negative balance in the REP object 200 is the allocation/adjustment in the PSERS liability for the food service fund.

LEA : 124158503 Unionville-Chadds Ford SD

Printed 1/6/2022 12:00:01 PM

Amounts Expressed in Whole Dollars		<u>General Fund</u> <u>(10)</u>	<u>Student Sponsored</u> <u>Activity Fund</u> <u>(21)</u>	<u>Public Purpose Trust</u> <u>(27)</u>	<u>Other Compt Approved</u> <u>(28)</u>	<u>Athletic / Activity</u> <u>(29)</u>
Assets And Deferred Outflows Of Resources						
Assets						
0100	Cash and Cash Equivalents	14,334,746				
0110	Investments	1,245,000				
0120	Taxes Receivable	1,170,993				
0130	Due From Other Funds					
0141	Due From Other Governments	5,186,185				
0142	State Revenue Receivable					
0143	Federal Revenue Receivable					
0145	Other Intergovernmental Revenue Receivable					
0146	Due from Primary Government					
0147	Due from Component Unit					
0150	Other Receivables	3,319				
0170	Inventories					
0180	Prepaid Expenses (Expenditures)	12,937				
0190	Other Current Assets					
Total Assets		\$21,953,180				
0910	Deferred Outflows of Resources					
Total Assets And Deferred Outflows Of Resources		\$21,953,180				

LEA : 124158503 Unionville-Chadds Ford SD

Printed 1/6/2022 12:00:01 PM

Amounts Expressed in Whole Dollars		<u>Capital Reserve (690.</u> <u>1850)</u> <u>(31)</u>	<u>Capital Reserve (1431)</u> <u>(32)</u>	<u>Other Capital Projects</u> <u>Fund</u> <u>(39)</u>	<u>Debt Service</u> <u>(40)</u>	<u>Permanent</u> <u>(90)</u>
Assets And Deferred Outflows Of Resources						
Assets						
0100	Cash and Cash Equivalents		2,583,315	2,017		
0110	Investments					
0120	Taxes Receivable					
0130	Due From Other Funds					
0141	Due From Other Governments					
0142	State Revenue Receivable					
0143	Federal Revenue Receivable					
0145	Other Intergovernmental Revenue Receivable					
0146	Due from Primary Government					
0147	Due from Component Unit					
0150	Other Receivables					
0170	Inventories					
0180	Prepaid Expenses (Expenditures)					
0190	Other Current Assets					
Total Assets			\$2,583,315	\$2,017		
0910	Deferred Outflows of Resources					
Total Assets And Deferred Outflows Of Resources			\$2,583,315	\$2,017		

LEA : 124158503 Unionville-Chadds Ford SD

Printed 1/6/2022 12:00:01 PM

Amounts Expressed in Whole Dollars		<u>Total Governmental</u> <u>Funds</u>
Assets And Deferred Outflows Of Resources		
Assets		
0100 Cash and Cash Equivalents	16,920,078	
0110 Investments	1,245,000	
0120 Taxes Receivable	1,170,993	
0130 Due From Other Funds		
0141 Due From Other Governments	5,186,185	
0142 State Revenue Receivable		
0143 Federal Revenue Receivable		
0145 Other Intergovernmental Revenue Receivable		
0146 Due from Primary Government		
0147 Due from Component Unit		
0150 Other Receivables	3,319	
0170 Inventories		
0180 Prepaid Expenses (Expenditures)	12,937	
0190 Other Current Assets		
Total Assets	\$24,538,512	
0910 Deferred Outflows of Resources		
Total Assets And Deferred Outflows Of Resources	\$24,538,512	

LEA : 124158503 Unionville-Chadds Ford SD

Printed 1/6/2022 12:00:01 PM

Amounts Expressed in Whole Dollars		<u>General Fund</u> <u>(10)</u>	<u>Student Sponsored</u> <u>Activity Fund</u> <u>(21)</u>	<u>Public Purpose Trust</u> <u>(27)</u>	<u>Other Compt Approved</u> <u>(28)</u>	<u>Athletic / Activity</u> <u>(29)</u>
Liabilities And Deferred Inflows Of Resources And Fund Balances						
Liabilities						
0400	Due to Other Funds	241,003				
0411	Due to Other Governments					
0412	Due to Primary Government					
0413	Due to Component Unit					
0420	Accounts Payable	892,629				
0430	Contracts Payable					
0440	Current Portion of Long-Term Debt					
0450	Short-Term Payables					
0461	Accrued Salaries and Benefits	10,953,161				
0462	Payroll Deductions and Withholding					
0480	Unearned Revenues	757,345				
0490	Other Current Liabilities					
Total Liabilities		\$12,844,138				
0950	Deferred Inflows of Resources					
Fund Balances						
0810	Nonspendable Fund Balance	12,937				
0820	Restricted Fund Balance					
0830	Committed Fund Balance	3,885,201				
0840	Assigned Fund Balance					
0850	Unassigned Fund Balance	5,210,904				
Total Fund Balances		\$9,109,042				
Total Liabilities, Deferred Inflows Of Resources And Fund Balances		\$21,953,180				

LEA : 124158503 Unionville-Chadds Ford SD

Printed 1/6/2022 12:00:01 PM

Amounts Expressed in Whole Dollars		<u>Capital Reserve (690.</u> <u>1850)</u> <u>(31)</u>	<u>Capital Reserve (1431)</u> <u>(32)</u>	<u>Other Capital Projects</u> <u>Fund</u> <u>(39)</u>	<u>Debt Service</u> <u>(40)</u>	<u>Permanent</u> <u>(90)</u>
Liabilities And Deferred Inflows Of Resources And Fund Balances						
Liabilities						
0400	Due to Other Funds					
0411	Due to Other Governments					
0412	Due to Primary Government					
0413	Due to Component Unit					
0420	Accounts Payable		913,430			
0430	Contracts Payable					
0440	Current Portion of Long-Term Debt					
0450	Short-Term Payables					
0461	Accrued Salaries and Benefits					
0462	Payroll Deductions and Withholding					
0480	Unearned Revenues					
0490	Other Current Liabilities					
Total Liabilities			\$913,430			
0950	Deferred Inflows of Resources					
Fund Balances						
0810	Nonspendable Fund Balance					
0820	Restricted Fund Balance		1,669,885	2,017		
0830	Committed Fund Balance					
0840	Assigned Fund Balance					
0850	Unassigned Fund Balance					
Total Fund Balances			\$1,669,885	\$2,017		
Total Liabilities, Deferred Inflows Of Resources And Fund Balances			\$2,583,315	\$2,017		

LEA : 124158503 Unionville-Chadds Ford SD

Printed 1/6/2022 12:00:01 PM

Amounts Expressed in Whole Dollars		<u>Total Governmental Funds</u>
Liabilities And Deferred Inflows Of Resources And Fund Balances		
Liabilities		
0400 Due to Other Funds	241,003	
0411 Due to Other Governments		
0412 Due to Primary Government		
0413 Due to Component Unit		
0420 Accounts Payable	1,806,059	
0430 Contracts Payable		
0440 Current Portion of Long-Term Debt		
0450 Short-Term Payables		
0461 Accrued Salaries and Benefits	10,953,161	
0462 Payroll Deductions and Withholding		
0480 Unearned Revenues	757,345	
0490 Other Current Liabilities		
Total Liabilities	\$13,757,568	
0950 Deferred Inflows of Resources		
Fund Balances		
0810 Nonspendable Fund Balance	12,937	
0820 Restricted Fund Balance	1,671,902	
0830 Committed Fund Balance	3,885,201	
0840 Assigned Fund Balance		
0850 Unassigned Fund Balance	5,210,904	
Total Fund Balances	\$10,780,944	
Total Liabilities, Deferred Inflows Of Resources And Fund Balances	\$24,538,512	

Amounts Expressed in Whole Dollars	<u>General Fund</u> <u>(10)</u>	<u>Student Sponsored</u> <u>Activity Fund</u> <u>(21)</u>	<u>Public Purpose Trust</u> <u>(27)</u>	<u>Other Compt Approved</u> <u>(28)</u>	<u>Athletic / Activity</u> <u>(29)</u>
Revenues					
6000 Revenue from Local Sources	72,244,983				
7000 Revenue from State Sources	16,399,351				
8000 Revenue from Federal Sources	1,754,571				
Total Revenues	\$90,398,905				
Expenditures					
1000 Instruction	51,852,042				
2000 Support Services	28,003,905				
3000 Operation of Non-Instructional Services	1,664,763				
4000 Facilities Acquisition, Construction and Improvement Services					
5110 Debt Service	8,482,325				
5130 Refund of Prior Year Revenues / Receipts	6,669				
Total Expenditures	\$90,009,704				
Excess (Deficiency) Of Revenues Over Expenditures	\$389,201				
Other Financing Sources (Uses)					
9110 Face Value of Bonds Issued					
9120 Proceeds from Refunding of Bonds					
9130 Bond Premiums					
9200 Proceeds from Extended-Term Financing					
9300 Interfund Transfers - IN	183,572				
9400 Sale of or Compensation for Loss of Fixed Assets					
9710 Transfers from Component Units					
9720 Transfers from Primary Governments					
9910 Other Financing Sources Not Listed in the 9000 Series					
9990 Insurance Recoveries					
5120 Debt Service – Refunded Bonds					
5150 Bond Discounts					
5200 Interfund Transfers – Out	1,008,560				
5300 Transfers Out to Component Units/Primary Governments					
Total Other Financing Sources (Uses)	(\$824,988)				

Amounts Expressed in Whole Dollars		<u>Capital Reserve (690.1850)</u> <u>(31)</u>	<u>Capital Reserve (1431)</u> <u>(32)</u>	<u>Other Capital Projects</u> <u>Fund</u> <u>(39)</u>	<u>Debt Service</u> <u>(40)</u>	<u>Permanent</u> <u>(90)</u>
Revenues						
6000	Revenue from Local Sources		1,390	1,048		
7000	Revenue from State Sources					
8000	Revenue from Federal Sources					
Total Revenues			\$1,390	\$1,048		
Expenditures						
1000	Instruction					
2000	Support Services					
3000	Operation of Non-Instructional Services					
4000	Facilities Acquisition, Construction and Improvement Services		2,493,975	2,480,188		
5110	Debt Service					
5130	Refund of Prior Year Revenues / Receipts					
Total Expenditures			\$2,493,975	\$2,480,188		
Excess (Deficiency) Of Revenues Over Expenditures			(\$2,492,585)	(\$2,479,140)		
Other Financing Sources (Uses)						
9110	Face Value of Bonds Issued					
9120	Proceeds from Refunding of Bonds					
9130	Bond Premiums					
9200	Proceeds from Extended-Term Financing					
9300	Interfund Transfers - IN		1,008,560			
9400	Sale of or Compensation for Loss of Fixed Assets					
9710	Transfers from Component Units					
9720	Transfers from Primary Governments					
9910	Other Financing Sources Not Listed in the 9000 Series					
9990	Insurance Recoveries					
5120	Debt Service – Refunded Bonds					
5150	Bond Discounts					
5200	Interfund Transfers – Out			183,572		
5300	Transfers Out to Component Units/Primary Governments					
Total Other Financing Sources (Uses)			\$1,008,560	(\$183,572)		

Amounts Expressed in Whole Dollars		<u>Total Governmental Funds</u>
Revenues		
6000	Revenue from Local Sources	72,247,421
7000	Revenue from State Sources	16,399,351
8000	Revenue from Federal Sources	1,754,571
Total Revenues		\$90,401,343
Expenditures		
1000	Instruction	51,852,042
2000	Support Services	28,003,905
3000	Operation of Non-Instructional Services	1,664,763
4000	Facilities Acquisition, Construction and Improvement Services	4,974,163
5110	Debt Service	8,482,325
5130	Refund of Prior Year Revenues / Receipts	6,669
Total Expenditures		\$94,983,867
Excess (Deficiency) Of Revenues Over Expenditures		(\$4,582,524)
Other Financing Sources (Uses)		
9110	Face Value of Bonds Issued	
9120	Proceeds from Refunding of Bonds	
9130	Bond Premiums	
9200	Proceeds from Extended-Term Financing	
9300	Interfund Transfers - IN	1,192,132
9400	Sale of or Compensation for Loss of Fixed Assets	
9710	Transfers from Component Units	
9720	Transfers from Primary Governments	
9910	Other Financing Sources Not Listed in the 9000 Series	
9990	Insurance Recoveries	
5120	Debt Service – Refunded Bonds	
5150	Bond Discounts	
5200	Interfund Transfers – Out	1,192,132
5300	Transfers Out to Component Units/Primary Governments	
Total Other Financing Sources (Uses)		\$0

Amounts Expressed in Whole Dollars		<u>General Fund</u> <u>(10)</u>	<u>Student Sponsored</u> <u>Activity Fund</u> <u>(21)</u>	<u>Public Purpose Trust</u> <u>(27)</u>	<u>Other Compt Approved</u> <u>(28)</u>	<u>Athletic / Activity</u> <u>(29)</u>
Special And Extraordinary Items						
9920	Special Items – Gains					
9930	Extraordinary Items – Gains					
5520	Special Items – Losses					
5530	Extraordinary Items – Losses					
Net Change In Fund Balances		(\$435,787)				
Fund Balance						
0001	Fund Balance - Beginning of Fiscal Year	9,544,826				
Fund Balance - End Of Year		\$9,109,039				

Amounts Expressed in Whole Dollars		<u>Capital Reserve (690.</u> <u>1850)</u> <u>(31)</u>	<u>Capital Reserve (1431)</u> <u>(32)</u>	<u>Other Capital Projects</u> <u>Fund</u> <u>(39)</u>	<u>Debt Service</u> <u>(40)</u>	<u>Permanent</u> <u>(90)</u>
Special And Extraordinary Items						
9920	Special Items – Gains					
9930	Extraordinary Items – Gains					
5520	Special Items – Losses					
5530	Extraordinary Items – Losses					
Net Change In Fund Balances			(\$1,484,025)	(\$2,662,712)		
Fund Balance						
0001	Fund Balance - Beginning of Fiscal Year		3,153,910	2,664,730		
Fund Balance - End Of Year			\$1,669,885	\$2,018		

Amounts Expressed in Whole Dollars		<u>Total Governmental</u> <u>Funds</u>
Special And Extraordinary Items		
9920	Special Items – Gains	
9930	Extraordinary Items – Gains	
5520	Special Items – Losses	
5530	Extraordinary Items – Losses	
Net Change In Fund Balances		(\$4,582,524)
Fund Balance		
0001	Fund Balance - Beginning of Fiscal Year	15,363,466
Fund Balance - End Of Year		\$10,780,942

Amounts Expressed in Whole Dollars		<u>Food Service</u> <u>(51)</u>	<u>Child Care</u> <u>Operations</u> <u>(52)</u>	<u>Other Enterprise</u> <u>(58)</u>	<u>TOTAL</u>	<u>Internal Service</u> <u>(60)</u>
Assets And Deferred Outflows Of Resources						
Current Assets						
0100	Cash and Cash Equivalents	215,877			215,877	4,229,642
0110	Investments					
0130	Due From Other Funds					488,103
0141	Due From Other Governments	235,453			235,453	
0142	State Revenue Receivable					
0143	Federal Revenue Receivable					
0146	Due from Primary Government					
0147	Due from Component Unit					
0150	Other Receivables					
0170	Inventories	16,252			16,252	
0180	Prepaid Expenses (Expenditures)					
0190	Other Current Assets					211,128
Total Current Assets		\$467,582			\$467,582	\$4,928,873
Noncurrent Assets						
0211	Land					
0212	Site Improvements (Net)					
0220	Buildings and Building Improvements (Net)					
0230	Machinery, Equipment and Furniture (Net)	296,925			296,925	
0250	Construction in Progress					
0260	Long Term Prepayments					
0290	Other Noncurrent Assets					
Total Noncurrent Assets		\$296,925			\$296,925	
0910	Deferred Outflows of Resources	164,434			164,434	
Total Assets And Deferred Outflows Of Resources		\$928,941			\$928,941	\$4,928,873

Amounts Expressed in Whole Dollars	<u>Food Service</u> <u>(51)</u>	<u>Child Care</u> <u>Operations</u> <u>(52)</u>	<u>Other Enterprise</u> <u>(58)</u>	<u>TOTAL</u>	<u>Internal Service</u> <u>(60)</u>
Liabilities And Deferred Inflows Of Resources And Net Position					
Current Liabilities					
0400 Due to Other Funds	247,100			247,100	
0411 Due to Other Governments					
0413 Due to Component Unit					
0420 Accounts Payable					
0430 Contracts Payable					
0440 Current Portion of Long-Term Debt					
0450 Short-Term Payables					
0461 Accrued Salaries and Benefits	14,618			14,618	488,103
0462 Payroll Deductions and Withholding					
0480 Unearned Revenues	103,111			103,111	
0490 Other Current Liabilities					
Total Current Liabilities	\$364,829			\$364,829	\$488,103
Noncurrent Liabilities					
0510 Bonds Payable					
0520 Extended-Term Financing Agreements Payable					
0530 Lease-Purchase Obligations					
0540 Accumulated Compensated Absences					
0550 Authority Lease Obligations					
0560 Other Post-Employment Benefits (OPEB)	146,497			146,497	
0570 Net Pension Liability	883,364			883,364	
0599 Other Noncurrent Liabilities					
Total Noncurrent Liabilities	\$1,029,861			\$1,029,861	
Total Liabilities	\$1,394,690			\$1,394,690	\$488,103
0950 Deferred Inflows of Resources	28,343			28,343	
Net Position					
0791 Net Investment in Capital Assets	296,925			296,925	
0008 Restricted Net Position (0792 – 0798)					
0799 Unrestricted Net Position	(791,017)			(791,017)	4,440,770
Total Net Position	(\$494,092)			(\$494,092)	\$4,440,770
Total Liabilities And Deferred Inflows Of Resources And Net Position	\$928,941			\$928,941	\$4,928,873

Amounts Expressed in Whole Dollars		<u>Food Service</u> <u>(51)</u>	<u>Child Care Operations</u> <u>(52)</u>	<u>Other Enterprise</u> <u>(58)</u>	<u>TOTAL</u>	<u>Internal Service</u> <u>(60)</u>
Operating Revenues						
6600	Food Service Revenue	10,416			10,416	
0071	Charges for Services					7,444,081
0072	Other Operating Revenue					
Total Operating Revenues		\$10,416			\$10,416	\$7,444,081
Operating Expenses						
100	Personnel Services – Salaries	339,373			339,373	
200	Personnel Services – Employee Benefits	(727,081)			(727,081)	7,435,247
300	Purchased Professional and Technical Services					8,834
400	Purchased Property Services					
500	Other Purchased Services					
600	Supplies	327,675			327,675	
740	Depreciation	71,898			71,898	
810	Dues and Fees					
880	Refunds of Prior Years' Receipts					
890	Miscellaneous Expenditures					
Total Operating Expenses		\$11,865			\$11,865	\$7,444,081
Operating Income (Loss)		(\$1,449)			(\$1,449)	\$0
Non Operating Revenues (Expenses)						
6500	Earnings on Investments	487			487	64,304
6920	Contributions and Donations from Private Sources	12,084			12,084	
6930	Gains or Losses on Sale of Fixed Assets					
6991	Refunds of a Prior Year Expenditure					
7000	Revenue from State Sources	69,770			69,770	
8000	Revenue from Federal Sources	495,390			495,390	
9990	Insurance Recoveries					
820	Claims and Judgments Against the LEA					
830	Interest					
TOTAL Non Operating Revenues (Expenses)		\$577,731			\$577,731	\$64,304
Income (Loss) Before Contributions And Transfers		\$576,282			\$576,282	\$64,304

Amounts Expressed in Whole Dollars	<u>Food Service</u> <u>(51)</u>	<u>Child Care Operations</u> <u>(52)</u>	<u>Other Enterprise</u> <u>(58)</u>	<u>TOTAL</u>	<u>Internal Service</u> <u>(60)</u>
Contributions, Transfers, and Special and Extraordinary Items					
5200 Interfund Transfers – Out					
5300 Transfers Out to Component Units/Primary Governments					
5520 Special Items – Losses					
5530 Extraordinary Items – Losses					
9300 Interfund Transfers - IN					
9500 Capital Contributions					
9700 Transfers IN From Component Units/Primary Governments					
9920 Special Items – Gains					
9930 Extraordinary Items – Gains					
Change In Net Position	\$576,282			\$576,282	\$64,304
0002 Net Position - Beginning of Fiscal Year	(1,070,374)			(1,070,374)	4,376,466
0003 Accounting Changes / Residual Equity Transfers					
Net Position - End Of Year	(\$494,092)			(\$494,092)	\$4,440,770

LEA : 124158503 Unionville-Chadds Ford SD

Printed 1/6/2022 12:00:39 PM

Amounts Expressed in Whole Dollars	<u>Food Service</u> <u>(51)</u>	<u>Child Care Operations</u> <u>(52)</u>	<u>Other Enterprise</u> <u>(58)</u>	<u>TOTAL</u>	<u>Internal Service(60)</u>
Cash Flows From Operating Activities					
0011 Cash Receipts From Users	1,902			1,902	
0012 Cash Receipts From Assessments Made to Other Funds					7,528,095
0013 Cash Receipts From Earnings on Investments					
0014 Cash Receipts From Other Operating Revenue					
0015 Cash Payments To Employees For Services	353,075			353,075	
0016 Cash Payments For Insurance Claims					7,519,261
0017 Cash Payments To Suppliers For Goods and Services	286,040			286,040	
0018 Cash Payments For Other Operating Expenses					8,834
Net Cash Provided By (Used For) Operating Activities	(\$637,213)			(\$637,213)	\$0
Cash Flows From Non-Capital Financing Activities					
0021 Receipts From Local Sources - 6000	12,084			12,084	
0022 Receipts From State Sources - 7000	60,665			60,665	
0023 Receipts From Federal Sources -8000	295,798			295,798	
0024 Notes and Loans Received (Repaid)					
0025 Interest Paid on Notes/Loans - 5100-830					
0026 Operating Transfers In (Out)/Residual Equity Trans					
0027 Operating Transfers In (Out) Primary Government / Comp Unit					
0028 Receipts From Refund of Prior Year Expenditures - 6991					
0029 Special and Extraordinary Gains (losses)					
0030 Receipts from Insurance Recoveries -9990					
Net Cash Prov By (Used for) Non-Capital Financing Activities	\$368,547			\$368,547	
Cash Flows From Capital and Related Financing Activities					
0031 Payments For Fac Acq, Const, and Imp - 4000	(169,533)			(169,533)	
0032 Gain / (Loss) on Sale of Fixed Assets - 6930					
0033 Proceeds From Extended Term Financing - 9200					
0034 Principal Paid on Financing Agreements					
0035 Interest Paid on Financing Agreements - 5100-830					
0036 (Inc) Dec in Contributed Capital					
Net Cash Prov By (Used for) Capital and Related Financing Activities	(\$169,533)			(\$169,533)	
Cash Flows From Investing Activities					
0041 Earnings on Investments - 6500	487			487	64,304
0042 Purchase of Inv Securities / Deposits to Inv Pools					
0043 Receipts From Investment Pool Withdrawals					
0044 Proceeds from Sale and Maturity of Inv Securities					3,750,000

LEA : 124158503 Unionville-Chadds Ford SD

Printed 1/6/2022 12:00:39 PM

0045 Loans Received (Paid)				
Net Cash Prov By (Used for) Investing Activities	\$487		\$487	\$3,814,304

LEA : 124158503 Unionville-Chadds Ford SD

Printed 1/6/2022 12:00:39 PM

	<u>Food Service</u> <u>(51)</u>	<u>Child Care Operations</u> <u>(52)</u>	<u>Other Enterprise</u> <u>(58)</u>	<u>TOTAL</u>	<u>Internal Service</u> <u>(60)</u>
Net Increase (Decrease) in Cash Flows	(437,712)			(437,712)	3,814,304
0004 Cash and Cash Equivalents Beginning of Year	653,589			653,589	
Cash and Cash Equivalents at Year End	\$215,877			\$215,877	\$3,814,304
Reconciliation of Operating Income (Loss) To Net Cash Provided by (Used For) Operating Activities					
0005 Operating Income (Loss) per REP	(1,449)			(1,449)	
Adjustments					
0051 Depreciation and Net Amortization	71,898			71,898	
0052 Provision for Uncollectible Accounts					
0053 Other Adjustments	18,226			18,226	
Effect of Changes in Assets, Liabilities, Deferred Outflows and Deferred Inflows					
0054 (Inc) Dec In Accounts Receivable (0120-0150)					
0055 Advances to Other Funds (0160)					
0056 (Inc) Dec in Inventories (0170)	23,409			23,409	
0057 (Inc) Dec in Prepaid Expenses (0180)					
0058 (Inc) Dec in Other Current or Noncurrent Assets	248,093			248,093	84,014
0064 Deferred Outflows (0910)	108,084			108,084	
0059 Inc (Dec) in Accounts Payable (0400-0450)					
0060 Inc (Dec) in Accrued Salaries/Benefits (0461)	14,618			14,618	(84,014)
0065 Inc (Dec) in Net Pension Liabilities (0570)	(1,068,116)			(1,068,116)	
0066 Inc (Dec) in Other Postemp Benefit Oblig (0560)	17,095			17,095	
0061 Inc (Dec) in Payroll Deductions/Withholding (0462)					
0062 Inc (Dec) in Unearned Revenue (0480)	(8,514)			(8,514)	
0063 Inc (Dec) in Other Current or Noncurrent Liabilities					
0067 Deferred Inflows (0950)	(60,557)			(60,557)	
Total Adjustments	(\$635,764)			(\$635,764)	
Cash Provided By (Used for) Total	(\$637,213)			(\$637,213)	

COMBINED STATEMENT OF CASH FLOWS
SCHEDULE OF NONCASH INVESTING, CAPITAL, AND FINANCING ACTIVITIES

Explanation of Transaction and Balance Sheet Effect	Amount
Total	

LEA : 124158503 Unionville-Chadds Ford SD

Printed 1/6/2022 12:00:41 PM

Amounts Expressed in Whole Dollars		<u>Private Purpose Trust</u> <u>(71)</u>	<u>Investment Trust</u> <u>(72)</u>	<u>Pension Trust</u> <u>(73)</u>	<u>Student Activity Custodial</u> <u>(81)</u>
Assets And Deferred Outflows Of Resources					
Assets					
0100	Cash and Cash Equivalents	34,465			392,495
0110	Investments				
0130	Due From Other Funds				
0140	Due from Other Governments, Primary Government and Component Units				
0150	Other Receivables				
0170	Inventories				
0180	Prepaid Expenses (Expenditures)				
0190	Other Current Assets				
0220	Buildings and Building Improvements (Net)				
0230	Machinery, Equipment and Furniture (Net)				
Total Assets		\$34,465			\$392,495
0910	Deferred Outflows of Resources				
Total Assets And Deferred Outflows Of Resources		\$34,465			\$392,495

LEA : 124158503 Unionville-Chadds Ford SD

Printed 1/6/2022 12:00:41 PM

Amounts Expressed in Whole Dollars		<u>Other Custodial</u> <u>(89)</u>	<u>Fiduciary Component Units</u> <u>(98)</u>	<u>Total Fiduciary Funds</u>
Assets And Deferred Outflows Of Resources				
Assets				
0100	Cash and Cash Equivalents			426,960
0110	Investments			
0130	Due From Other Funds			
0140	Due from Other Governments, Primary Government and Component Units			
0150	Other Receivables			
0170	Inventories			
0180	Prepaid Expenses (Expenditures)			
0190	Other Current Assets			
0220	Buildings and Building Improvements (Net)			
0230	Machinery, Equipment and Furniture (Net)			
Total Assets				\$426,960
0910	Deferred Outflows of Resources			
Total Assets And Deferred Outflows Of Resources				\$426,960

LEA : 124158503 Unionville-Chadds Ford SD

Printed 1/6/2022 12:00:41 PM

Amounts Expressed in Whole Dollars	<u>Private Purpose Trust</u> <u>(71)</u>	<u>Investment Trust</u> <u>(72)</u>	<u>Pension Trust</u> <u>(73)</u>	<u>Student Activity Custodial</u> <u>(81)</u>
Liabilities, Deferred Inflows Of Resources And Net Position				
Liabilities				
0400 Due to Other Funds				
0410 Due to Other Governments, Primary Government and Component Units				
0420 Accounts Payable				
0430 Contracts Payable				
0450 Short-Term Payables				
0460 Payroll Accruals and Withholdings				
0480 Unearned Revenues				
0490 Other Current Liabilities				
Total Liabilities				
0950 Deferred Inflows of Resources				
Net Position				
0791 Net Investment in Capital Assets				
0009 Restricted Net Position (0792 – 0798)	34,465			392,495
0799 Unrestricted Net Position				
Total Net Position	\$34,465			\$392,495
Total Liabilities, Deferred Inflows Of Resources And Net Position	\$34,465			\$392,495

LEA : 124158503 Unionville-Chadds Ford SD

Printed 1/6/2022 12:00:41 PM

Amounts Expressed in Whole Dollars		<u>Other Custodial</u> <u>(89)</u>	<u>Fiduciary Component Units</u> <u>(98)</u>	<u>Total Fiduciary Funds</u>
Liabilities, Deferred Inflows Of Resources And Net Position				
Liabilities				
0400	Due to Other Funds			
0410	Due to Other Governments, Primary Government and Component Units			
0420	Accounts Payable			
0430	Contracts Payable			
0450	Short-Term Payables			
0460	Payroll Accruals and Withholdings			
0480	Unearned Revenues			
0490	Other Current Liabilities			
Total Liabilities				
0950	Deferred Inflows of Resources			
Net Position				
0791	Net Investment in Capital Assets			
0009	Restricted Net Position (0792 – 0798)			426,960
0799	Unrestricted Net Position			
Total Net Position				\$426,960
Total Liabilities, Deferred Inflows Of Resources And Net Position				\$426,960

LEA : 124158503 Unionville-Chadds Ford SD

Printed 1/6/2022 12:00:43 PM

Amounts Expressed in Whole Dollars	<u>Private Purpose Trust</u> <u>(71)</u>	<u>Investment Trust</u> <u>(72)</u>	<u>Pension Trust</u> <u>(73)</u>	<u>Student Activity</u> <u>Custodial</u> <u>(81)</u>	<u>Other Custodial</u> <u>(89)</u>	<u>Fiduciary Component</u> <u>Units</u> <u>(98)</u>
Additions						
0091 Gifts and Contributions	62,202			299,140		
0095 Net Investment Earnings						
0092 Other Additions						
Deductions						
0093 Scholarships Awarded	119,018					
0094 Other Deductions				274,840		
Change In Net Position	(\$56,816)			\$24,300		
0006 Net Position – Beginning of Fiscal Year	91,281			368,195		
0007 Net Position Held in Trust for Pension Benefits						
Net Position - End of Fiscal Year	\$34,465			\$392,495		

LEA : 124158503 Unionville-Chadds Ford SD

Printed 1/6/2022 12:00:43 PM

Amounts Expressed in Whole Dollars		<u>Total Fiduciary</u>
		<u>Funds</u>
Additions		
0091	Gifts and Contributions	361,342
0095	Net Investment Earnings	
0092	Other Additions	
Deductions		
0093	Scholarships Awarded	119,018
0094	Other Deductions	274,840
Change In Net Position		(\$32,516)
0006	Net Position – Beginning of Fiscal Year	459,476
0007	Net Position Held in Trust for Pension Benefits	
Net Position - End of Fiscal Year		\$426,960

	Revenue Reported In Current Year	Current Year Tax Accrual	Prior Year Tax Accrual	Taxes Collected In Current Year
Revenue from Local Sources				
6111 Current Real Estate Taxes	67,843,310.95			67,843,310.95
6112 Interim Real Estate Taxes	241,621.01	67,076.00	9,244.00	183,789.01
6113 Public Utility Realty Taxes	67,545.53			67,545.53
6153 Current Act 511 Real Estate Transfer Taxes	1,493,978.50	167,936.00	135,279.71	1,461,322.21
6411 Delinquent Real Estate Taxes	1,421,397.44	178,636.00	210,894.00	1,453,655.44
6500 Earnings on Investments	51,447.89			
6700 Revenues from LEA Activities	121,471.37			
6832 Federal IDEA Revenue Received as Pass Through	569,054.22			
6910 Rentals	11,916.00			
6941 Regular Day School Tuition	5,421.00			
6944 Receipts from Other LEAs in Pennsylvania - Education	243,827.83			
6949 Other Tuition from Patrons	12,770.00			
6991 Refunds of a Prior Year Expenditure	44,230.87			
6992 Energy Efficiency Revenues and Incentives	56,507.97			
6999 Other Revenues Not Specified Above	60,482.89			
TOTAL Revenue from Local Sources	\$72,244,983.47	\$413,648.00	\$355,417.71	\$71,009,623.14

	Revenue Reported In Current Year			
<u>Revenue from State Sources</u>				
7111 Basic Education Funding-Formula	3,368,197.59			
7112 Basic Education Funding-Social Security	1,184,752.27			
7160 Tuition for Orphans Subsidy	31,334.67			
7271 Special Education funds for School-Aged Pupils	1,841,569.80			
7311 Pupil Transportation Subsidy	456,890.34			
7312 Nonpublic and Charter School Pupil Transportation Subsidy	96,250.00			
7320 Rental and Sinking Fund Payments / Building Reimbursement Subsidy	289,875.51			
7330 Health Services (Medical, Dental, Nurse, Act 25)	79,127.92			
7340 State Property Tax Reduction Allocation	1,488,735.71			
7361 School Safety and Security Grants	21,196.00			
7505 Ready to Learn Block Grant	127,325.00			
7810 State Share of Social Security and Medicare Taxes	402,990.18			
7820 State Share of Retirement Contributions	7,011,105.71			
TOTAL Revenue from State Sources	\$16,399,350.70			

	Revenue Reported In Current Year			
<u>Revenue from Federal Sources</u>				
8514 NCLB, Title I - Improving the Academic Achievement of the Disadvantaged	102,643.98			
8515 NCLB, Title II - Preparing, Training and Recruiting High Quality Teachers and Principals	55,624.00			
8516 NCLB, Title III - Language Instruction for Limited English Proficient and Immigrant Students	6,795.15			
8517 NCLB, Title IV - 21St Century Schools	10,000.00			
8741 Elementary and Secondary School Emergency Relief Fund (ESSER)	82,072.00			
8742 Governor's Emergency Education Relief Fund (GEER)	49,672.00			
8743 ESSER II - Elementary and Secondary School Emergency Relief Fund	364,766.00			
8744 ARP ESSER - Elementary and Secondary School Emergency Relief Fund	135,024.00			
8749 Other CARES Act Funding	538,225.98			
8810 School-Based Access Medicaid Reimbursement Program (SBAP) Reimbursements (Access)	409,748.35			
TOTAL Revenue from Federal Sources	\$1,754,571.46			

	Revenue Reported In Current Year			
<u>Other Financing Sources</u>				
9330 Capital Projects Fund Transfers	183,572.33			
TOTAL Other Financing Sources	\$183,572.33			
TOTAL FROM ALL SOURCES	\$90,582,477.96	\$413,648.00	\$355,417.71	\$71,009,623.14

LEA : 124158503 Unionville-Chadds Ford SD

Printed 1/6/2022 12:00:49 PM

	<u>General Fund (10)</u>	<u>Student Sponsored Activity Fund (21)</u>	<u>Public Purpose Trust (27)</u>	<u>Other Compt Approved (28)</u>	<u>Athletic / Activity (29)</u>	<u>Capital Reserve (690, 1850) (31)</u>
6000 Revenue from Local Sources						
6111 Current Real Estate Taxes	67,843,310.95					
6112 Interim Real Estate Taxes	241,621.01					
6113 Public Utility Realty Taxes	67,545.53					
6153 Current Act 511 Real Estate Transfer Taxes	1,493,978.50					
6411 Delinquent Real Estate Taxes	1,421,397.44					
6500 Earnings on Investments	51,447.89					
6700 Revenues from LEA Activities	121,471.37					
6832 Federal IDEA Revenue Received as Pass Through	569,054.22					
6910 Rentals	11,916.00					
6941 Regular Day School Tuition	5,421.00					
6944 Receipts from Other LEAs in Pennsylvania - Education	243,827.83					
6949 Other Tuition from Patrons	12,770.00					
6991 Refunds of a Prior Year Expenditure	44,230.87					
6992 Energy Efficiency Revenues and Incentives	56,507.97					
6999 Other Revenues Not Specified Above	60,482.89					
6000 Total Revenue from Local Sources	\$72,244,983.47					
7000 Revenue from State Sources						
7111 Basic Education Funding-Formula	3,368,197.59					
7112 Basic Education Funding-Social Security	1,184,752.27					
7160 Tuition for Orphans Subsidy	31,334.67					
7271 Special Education funds for School-Aged Pupils	1,841,569.80					
7311 Pupil Transportation Subsidy	456,890.34					
7312 Nonpublic and Charter School Pupil Transportation Subsidy	96,250.00					
7320 Rental and Sinking Fund Payments / Building Reimbursement Subsidy	289,875.51					
7330 Health Services (Medical, Dental, Nurse, Act 25)	79,127.92					
7340 State Property Tax Reduction Allocation	1,488,735.71					
7361 School Safety and Security Grants	21,196.00					
7505 Ready to Learn Block Grant	127,325.00					
7810 State Share of Social Security and Medicare Taxes	402,990.18					
7820 State Share of Retirement Contributions	7,011,105.71					
7000 Total Revenue from State Sources	\$16,399,350.70					
8000 Revenue from Federal Sources						
8514 NCLB, Title I - Improving the Academic Achievement of the Disadvantaged	102,643.98					
8515 NCLB, Title II - Preparing, Training and Recruiting High Quality Teachers and Principals	55,624.00					

LEA : 124158503 Unionville-Chadds Ford SD

Printed 1/6/2022 12:00:49 PM

	<u>Capital Reserve</u> <u>(1431) (32)</u>	<u>Other Capital</u> <u>Projects Fund (39)</u>	<u>Debt Service (40)</u>	<u>Permanent (90)</u>	<u>Total</u>
6000 Revenue from Local Sources					
6111 Current Real Estate Taxes					67,843,310.95
6112 Interim Real Estate Taxes					241,621.01
6113 Public Utility Realty Taxes					67,545.53
6153 Current Act 511 Real Estate Transfer Taxes					1,493,978.50
6411 Delinquent Real Estate Taxes					1,421,397.44
6500 Earnings on Investments	1,390.36	1,047.59			53,885.84
6700 Revenues from LEA Activities					121,471.37
6832 Federal IDEA Revenue Received as Pass Through					569,054.22
6910 Rentals					11,916.00
6941 Regular Day School Tuition					5,421.00
6944 Receipts from Other LEAs in Pennsylvania - Education					243,827.83
6949 Other Tuition from Patrons					12,770.00
6991 Refunds of a Prior Year Expenditure					44,230.87
6992 Energy Efficiency Revenues and Incentives					56,507.97
6999 Other Revenues Not Specified Above					60,482.89
6000 Total Revenue from Local Sources	\$1,390.36	\$1,047.59			\$72,247,421.42
7000 Revenue from State Sources					
7111 Basic Education Funding-Formula					3,368,197.59
7112 Basic Education Funding-Social Security					1,184,752.27
7160 Tuition for Orphans Subsidy					31,334.67
7271 Special Education funds for School-Aged Pupils					1,841,569.80
7311 Pupil Transportation Subsidy					456,890.34
7312 Nonpublic and Charter School Pupil Transportation Subsidy					96,250.00
7320 Rental and Sinking Fund Payments / Building Reimbursement Subsidy					289,875.51
7330 Health Services (Medical, Dental, Nurse, Act 25)					79,127.92
7340 State Property Tax Reduction Allocation					1,488,735.71
7361 School Safety and Security Grants					21,196.00
7505 Ready to Learn Block Grant					127,325.00
7810 State Share of Social Security and Medicare Taxes					402,990.18
7820 State Share of Retirement Contributions					7,011,105.71
7000 Total Revenue from State Sources					\$16,399,350.70
8000 Revenue from Federal Sources					
8514 NCLB, Title I - Improving the Academic Achievement of the Disadvantaged					102,643.98
8515 NCLB, Title II - Preparing, Training and Recruiting High Quality Teachers and Principals					55,624.00

LEA : 124158503 Unionville-Chadds Ford SD

Printed 1/6/2022 12:00:49 PM

	<u>General Fund (10)</u>	<u>Student Sponsored Activity Fund (21)</u>	<u>Public Purpose Trust (27)</u>	<u>Other Compt Approved (28)</u>	<u>Athletic / Activity (29)</u>	<u>Capital Reserve (690, 1850) (31)</u>
8000 Revenue from Federal Sources						
8516 NCLB, Title III - Language Instruction for Limited English Proficient and Immigrant Students	6,795.15					
8517 NCLB, Title IV - 21st Century Schools	10,000.00					
8741 Elementary and Secondary School Emergency Relief Fund (ESSER)	82,072.00					
8742 Governor's Emergency Education Relief Fund (GEER)	49,672.00					
8743 ESSER II - Elementary and Secondary School Emergency Relief Fund	364,766.00					
8744 ARP ESSER - Elementary and Secondary School Emergency Relief Fund	135,024.00					
8749 Other CARES Act Funding	538,225.98					
8810 School-Based Access Medicaid Reimbursement Program (SBAP) Reimbursements (Access)	409,748.35					
8000 Total Revenue from Federal Sources	\$1,754,571.46					
9000 Other Financing Sources						
9310 General Fund Transfers						
9330 Capital Projects Fund Transfers	183,572.33					
9000 Total Other Financing Sources	\$183,572.33					
Total From All Sources	\$90,582,477.96					

LEA : 124158503 Unionville-Chadds Ford SD

Printed 1/6/2022 12:00:49 PM

	<u>Capital Reserve</u> <u>(1431) (32)</u>	<u>Other Capital</u> <u>Projects Fund (39)</u>	<u>Debt Service (40)</u>	<u>Permanent (90)</u>	<u>Total</u>
8000 Revenue from Federal Sources					
8516 NCLB, Title III - Language Instruction for Limited English Proficient and Immigrant Students					6,795.15
8517 NCLB, Title IV - 21st Century Schools					10,000.00
8741 Elementary and Secondary School Emergency Relief Fund (ESSER)					82,072.00
8742 Governor's Emergency Education Relief Fund (GEER)					49,672.00
8743 ESSER II - Elementary and Secondary School Emergency Relief Fund					364,766.00
8744 ARP ESSER - Elementary and Secondary School Emergency Relief Fund					135,024.00
8749 Other CARES Act Funding					538,225.98
8810 School-Based Access Medicaid Reimbursement Program (SBAP) Reimbursements (Access)					409,748.35
8000 Total Revenue from Federal Sources					\$1,754,571.46
9000 Other Financing Sources					
9310 General Fund Transfers	1,008,560.33				1,008,560.33
9330 Capital Projects Fund Transfers					183,572.33
9000 Total Other Financing Sources	\$1,008,560.33				\$1,192,132.66
Total From All Sources	\$1,009,950.69	\$1,047.59			\$91,593,476.24

LEA : 124158503 Unionville-Chadds Ford SD

Printed 1/6/2022 12:00:53 PM

	<u>General Fund (10)</u>	<u>Student Sponsored</u> <u>Activity Fund (21)</u>	<u>Public Purpose Trust (27)</u>	<u>Other Compt Approved</u> <u>(28)</u>	<u>Athletic / Activity (29)</u>	<u>Capital Reserve (690.</u> <u>1850) (31)</u>
Revenue from Local Sources	72,244,983.47					
Revenue from State Sources	16,399,350.70					
Revenue from Federal Sources	1,754,571.46					
Other Financing Sources	183,572.33					
Total From All Sources	\$90,582,477.96					

LEA : 124158503 Unionville-Chadds Ford SD

Printed 1/6/2022 12:00:53 PM

	<u>Capital Reserve (1431)</u> <u>(32)</u>	<u>Other Capital Projects</u> <u>Fund (39)</u>	<u>Debt Service (40)</u>	<u>Permanent (90)</u>	<u>Total</u>
Revenue from Local Sources	1,390.36	1,047.59			72,247,421.42
Revenue from State Sources					16,399,350.70
Revenue from Federal Sources					1,754,571.46
Other Financing Sources	1,008,560.33				1,192,132.66
Total From All Sources	\$1,009,950.69	\$1,047.59			\$91,593,476.24

LEA : 124158503 Unionville-Chadds Ford SD

Printed 1/6/2022 12:00:58 PM

General Fund (10)

1000 Instruction	Total
100 <u>Personnel Services – Salaries</u>	
100 Personnel Services – Salaries	27,706,180.72
Total Personnel Services – Salaries	\$27,706,180.72
200 <u>Personnel Services – Employee Benefits</u>	
220 Social Security Contributions	1,986,402.63
230 PSERS Retirement Contributions	9,139,862.73
250 Unemployment Compensation	77,493.51
260 Workers' Compensation	166,977.19
270 Group Insurance – Self-Insurance	4,743,368.22
Total Personnel Services – Employee Benefits	\$16,114,104.28
300 <u>Purchased Professional and Technical Services</u>	
322 Professional Educational Services – Ius	2,097,946.17
329 Professional Educational Services – Other	1,912,604.03
330 Other Professional Services	542,638.29
Total Purchased Professional and Technical Services	\$4,553,188.49
400 <u>Purchased Property Services</u>	
430 Repairs and Maintenance Services	165,357.88
440 Rentals	19,454.00
Total Purchased Property Services	\$184,811.88
500 <u>Other Purchased Services</u>	
530 Communications	570.82
561 Tuition To Other School Districts Within the State	140,170.17
562 Tuition To Pennsylvania Charter Schools	979,050.80
564 Tuition To Career and Technology Centers	786,153.03
567 Tuition To Approved Private Schools (APS) and PA Chartered Schools for the Deaf and Blind	65,759.16
569 Tuition – Other	507,313.77
580 Travel	5,873.88
599 Other Miscellaneous Purchased Services	223,417.14
Total Other Purchased Services	\$2,708,308.77
600 <u>Supplies</u>	
610 General Supplies	245,606.16
640 Books and Periodicals	167,678.62
650 Supplies & Fees – Technology Related	37,967.93
Total Supplies	\$451,252.71
700 <u>Property</u>	
752 Capital Equipment – Original and Additional	108,192.40
762 Capitalized Equipment - Replacement	26,002.52
Total Property	\$134,194.92
Total 1000 Instruction	\$51,852,041.77

LEA : 124158503 Unionville-Chadds Ford SD

Printed 1/6/2022 12:00:58 PM

General Fund (10)

1100 Regular Programs – Elementary / Secondary	Elementary	Secondary	Federal	Total
100 Personnel Services – Salaries				
100 Personnel Services – Salaries	10,317,479.41	10,335,495.49	514,765.10	21,167,740.00
Total Personnel Services – Salaries	\$10,317,479.41	\$10,335,495.49	\$514,765.10	\$21,167,740.00
200 Personnel Services – Employee Benefits				
220 Social Security Contributions	751,244.24	751,244.22		1,502,488.46
230 PSERS Retirement Contributions	3,480,569.60	3,480,569.60	17,608.00	6,978,747.20
250 Unemployment Compensation	24,656.97	24,656.97		49,313.94
260 Workers' Compensation	67,138.28	67,138.28		134,276.56
270 Group Insurance – Self-Insurance	1,630,350.01	1,638,442.16	8,092.15	3,276,884.32
Total Personnel Services – Employee Benefits	\$5,953,959.10	\$5,962,051.23	\$25,700.15	\$11,941,710.48
300 Purchased Professional and Technical Services				
322 Professional Educational Services – lus			3,500.00	3,500.00
329 Professional Educational Services – Other	566,814.89	413,037.52		979,852.41
330 Other Professional Services			3,295.15	3,295.15
Total Purchased Professional and Technical Services	\$566,814.89	\$413,037.52	\$6,795.15	\$986,647.56
400 Purchased Property Services				
430 Repairs and Maintenance Services	72,883.62	89,295.22		162,178.84
440 Rentals	19,454.00			19,454.00
Total Purchased Property Services	\$92,337.62	\$89,295.22		\$181,632.84
500 Other Purchased Services				
530 Communications	240.06	240.06		480.12
562 Tuition To Pennsylvania Charter Schools	219,134.32	461,169.51		680,303.83
569 Tuition – Other	140,798.96	317,482.88		458,281.84
580 Travel	(7,330.27)	10,968.24		3,637.97
Total Other Purchased Services	\$352,843.07	\$789,860.69		\$1,142,703.76
600 Supplies				
610 General Supplies	88,008.97	128,609.02	464.38	217,082.37
640 Books and Periodicals	85,053.55	80,548.83		165,602.38
650 Supplies & Fees – Technology Related	73.50	73.50		147.00
Total Supplies	\$173,136.02	\$209,231.35	\$464.38	\$382,831.75
700 Property				
752 Capital Equipment – Original and Additional	73,574.79	34,617.61		108,192.40
762 Capitalized Equipment - Replacement	8,956.36	17,046.16		26,002.52
Total Property	\$82,531.15	\$51,663.77		\$134,194.92
Total 1100 Regular Programs – Elementary / Secondary	\$17,539,101.26	\$17,850,635.27	\$547,724.78	\$35,937,461.31

LEA : 124158503 Unionville-Chadds Ford SD

Printed 1/6/2022 12:00:58 PM

General Fund (10)

1110 Regular Programs

	<u>Elementary</u>	<u>Secondary</u>	<u>Federal</u>	<u>Total</u>
100 <u>Personnel Services – Salaries</u>				
100 Personnel Services – Salaries	10,317,479.41	10,335,495.49	430,229.10	21,083,204.00
Total Personnel Services – Salaries	\$10,317,479.41	\$10,335,495.49	\$430,229.10	\$21,083,204.00
200 <u>Personnel Services – Employee Benefits</u>				
220 Social Security Contributions	751,244.24	751,244.22		1,502,488.46
230 PSERS Retirement Contributions	3,480,569.60	3,480,569.60		6,961,139.20
250 Unemployment Compensation	24,656.97	24,656.97		49,313.94
260 Workers' Compensation	67,138.28	67,138.28		134,276.56
270 Group Insurance – Self-Insurance	1,630,350.01	1,638,442.16	8,092.15	3,276,884.32
Total Personnel Services – Employee Benefits	\$5,953,959.10	\$5,962,051.23	\$8,092.15	\$11,924,102.48
300 <u>Purchased Professional and Technical Services</u>				
329 Professional Educational Services – Other	566,814.89	413,037.52		979,852.41
Total Purchased Professional and Technical Services	\$566,814.89	\$413,037.52		\$979,852.41
400 <u>Purchased Property Services</u>				
430 Repairs and Maintenance Services	72,883.62	89,295.22		162,178.84
440 Rentals	19,454.00			19,454.00
Total Purchased Property Services	\$92,337.62	\$89,295.22		\$181,632.84
500 <u>Other Purchased Services</u>				
530 Communications	240.06	240.06		480.12
562 Tuition To Pennsylvania Charter Schools	219,134.32	461,169.51		680,303.83
569 Tuition – Other	140,798.96	317,482.88		458,281.84
580 Travel	(7,330.27)	10,968.24		3,637.97
Total Other Purchased Services	\$352,843.07	\$789,860.69		\$1,142,703.76
600 <u>Supplies</u>				
610 General Supplies	88,008.97	128,609.02		216,617.99
640 Books and Periodicals	85,053.55	80,548.83		165,602.38
650 Supplies & Fees – Technology Related	73.50	73.50		147.00
Total Supplies	\$173,136.02	\$209,231.35		\$382,367.37
700 <u>Property</u>				
752 Capital Equipment – Original and Additional	73,574.79	34,617.61		108,192.40
762 Capitalized Equipment - Replacement	8,956.36	17,046.16		26,002.52
Total Property	\$82,531.15	\$51,663.77		\$134,194.92
Total 1110 Regular Programs	\$17,539,101.26	\$17,850,635.27	\$438,321.25	\$35,828,057.78

LEA : 124158503 Unionville-Chadds Ford SD

Printed 1/6/2022 12:00:58 PM

General Fund (10)

1190 Federally-Funded Regular Programs	<u>Elementary</u>	<u>Secondary</u>	<u>Federal</u>	<u>Total</u>
100 <u>Personnel Services – Salaries</u>				
100 Personnel Services – Salaries			84,536.00	84,536.00
Total Personnel Services – Salaries			\$84,536.00	\$84,536.00
200 <u>Personnel Services – Employee Benefits</u>				
230 PSERS Retirement Contributions			17,608.00	17,608.00
Total Personnel Services – Employee Benefits			\$17,608.00	\$17,608.00
300 <u>Purchased Professional and Technical Services</u>				
322 Professional Educational Services – Ius			3,500.00	3,500.00
330 Other Professional Services			3,295.15	3,295.15
Total Purchased Professional and Technical Services			\$6,795.15	\$6,795.15
600 <u>Supplies</u>				
610 General Supplies			464.38	464.38
Total Supplies			\$464.38	\$464.38
Total 1190 Federally-Funded Regular Programs			\$109,403.53	\$109,403.53

LEA : 124158503 Unionville-Chadds Ford SD

Printed 1/6/2022 12:00:58 PM

General Fund (10)

1200 Special Programs – Elementary / Secondary	Elementary	Secondary	Federal	Total
100 Personnel Services – Salaries				
100 Personnel Services – Salaries	3,499,767.73	2,362,228.13	675,166.80	6,537,162.66
Total Personnel Services – Salaries	\$3,499,767.73	\$2,362,228.13	\$675,166.80	\$6,537,162.66
200 Personnel Services – Employee Benefits				
220 Social Security Contributions	267,071.22	198,950.05	17,795.58	483,816.85
230 PSERS Retirement Contributions	1,171,452.95	868,988.04	116,499.82	2,156,940.81
250 Unemployment Compensation	15,784.01	12,395.56		28,179.57
260 Workers' Compensation	19,149.62	13,349.62		32,499.24
270 Group Insurance – Self-Insurance	817,799.26	622,815.79	25,868.85	1,466,483.90
Total Personnel Services – Employee Benefits	\$2,291,257.06	\$1,716,499.06	\$160,164.25	\$4,167,920.37
300 Purchased Professional and Technical Services				
322 Professional Educational Services – lus	969,512.07	1,124,934.10		2,094,446.17
329 Professional Educational Services – Other	614,343.02	252,684.90	49,672.00	916,699.92
330 Other Professional Services	4,884.14	534,459.00		539,343.14
Total Purchased Professional and Technical Services	\$1,588,739.23	\$1,912,078.00	\$49,672.00	\$3,550,489.23
400 Purchased Property Services				
430 Repairs and Maintenance Services	1,589.52	1,589.52		3,179.04
Total Purchased Property Services	\$1,589.52	\$1,589.52		\$3,179.04
500 Other Purchased Services				
530 Communications		90.70		90.70
561 Tuition To Other School Districts Within the State		17,054.70		17,054.70
562 Tuition To Pennsylvania Charter Schools	114,282.17	184,464.80		298,746.97
567 Tuition To Approved Private Schools (APS) and PA Chartered Schools for the Deaf and Blind	52,556.16	13,203.00		65,759.16
569 Tuition – Other	18,770.83	30,261.10		49,031.93
580 Travel	1,217.41	1,018.50		2,235.91
Total Other Purchased Services	\$186,826.57	\$246,092.80		\$432,919.37
600 Supplies				
610 General Supplies	19,955.81	8,567.98		28,523.79
640 Books and Periodicals	2,076.24			2,076.24
650 Supplies & Fees – Technology Related	17,919.41	19,901.52		37,820.93
Total Supplies	\$39,951.46	\$28,469.50		\$68,420.96
Total 1200 Special Programs – Elementary / Secondary	\$7,608,131.57	\$6,266,957.01	\$885,003.05	\$14,760,091.63

LEA : 124158503 Unionville-Chadds Ford SD

Printed 1/6/2022 12:00:58 PM

General Fund (10)

1210 Life Skills Support

	<u>Elementary</u>	<u>Secondary</u>	<u>Federal</u>	<u>Total</u>
100 <u>Personnel Services – Salaries</u>				
100 Personnel Services – Salaries		931.61	57,797.05	58,728.66
Total Personnel Services – Salaries		\$931.61	\$57,797.05	\$58,728.66
200 <u>Personnel Services – Employee Benefits</u>				
220 Social Security Contributions		2,081.68	2,210.74	4,292.42
230 PSERS Retirement Contributions		9,509.17	9,972.88	19,482.05
250 Unemployment Compensation		176.14		176.14
270 Group Insurance – Self-Insurance		17,121.39		17,121.39
Total Personnel Services – Employee Benefits		\$28,888.38	\$12,183.62	\$41,072.00
300 <u>Purchased Professional and Technical Services</u>				
322 Professional Educational Services – Ius	238,849.60	156,978.66		395,828.26
329 Professional Educational Services – Other	98,837.04	13,039.11		111,876.15
Total Purchased Professional and Technical Services	\$337,686.64	\$170,017.77		\$507,704.41
500 <u>Other Purchased Services</u>				
530 Communications		90.70		90.70
580 Travel	25.00			25.00
Total Other Purchased Services	\$25.00	\$90.70		\$115.70
600 <u>Supplies</u>				
610 General Supplies	7,190.00	831.61		8,021.61
Total Supplies	\$7,190.00	\$831.61		\$8,021.61
Total 1210 Life Skills Support	\$344,901.64	\$200,760.07	\$69,980.67	\$615,642.38

LEA : 124158503 Unionville-Chadds Ford SD

Printed 1/6/2022 12:00:58 PM

General Fund (10)

1220 Sensory Support	Elementary	Secondary	Federal	Total
100 <u>Personnel Services – Salaries</u>				
100 Personnel Services – Salaries	291,846.42	127,355.55	25,212.00	444,413.97
Total Personnel Services – Salaries	\$291,846.42	\$127,355.55	\$25,212.00	\$444,413.97
200 <u>Personnel Services – Employee Benefits</u>				
220 Social Security Contributions	21,652.18	11,154.16		32,806.34
230 PSERS Retirement Contributions	85,414.86	39,651.59	4,350.00	129,416.45
250 Unemployment Compensation	581.14	299.38		880.52
260 Workers' Compensation	1,943.91	1,001.41		2,945.32
270 Group Insurance – Self-Insurance	49,130.93	25,309.88		74,440.81
Total Personnel Services – Employee Benefits	\$158,723.02	\$77,416.42	\$4,350.00	\$240,489.44
300 <u>Purchased Professional and Technical Services</u>				
322 Professional Educational Services – lus	5,623.71	5,455.88		11,079.59
329 Professional Educational Services – Other	10,856.60	249.77		11,106.37
Total Purchased Professional and Technical Services	\$16,480.31	\$5,705.65		\$22,185.96
500 <u>Other Purchased Services</u>				
580 Travel	43.12			43.12
Total Other Purchased Services	\$43.12			\$43.12
600 <u>Supplies</u>				
610 General Supplies	3,545.49	498.74		4,044.23
Total Supplies	\$3,545.49	\$498.74		\$4,044.23
Total 1220 Sensory Support	\$470,638.36	\$210,976.36	\$29,562.00	\$711,176.72

LEA : 124158503 Unionville-Chadds Ford SD

Printed 1/6/2022 12:00:58 PM

General Fund (10)

1230 Emotional Support	Elementary	Secondary	Federal	Total
100 <u>Personnel Services – Salaries</u>				
100 Personnel Services – Salaries	360,022.72	299,829.69	247,040.25	906,892.66
Total Personnel Services – Salaries	\$360,022.72	\$299,829.69	\$247,040.25	\$906,892.66
200 <u>Personnel Services – Employee Benefits</u>				
220 Social Security Contributions	26,858.28	30,838.12	9,449.29	67,145.69
230 PSERS Retirement Contributions	135,817.69	161,099.74	42,626.80	339,544.23
250 Unemployment Compensation	1,761.27	2,641.91		4,403.18
260 Workers' Compensation	956.60	1,434.90		2,391.50
270 Group Insurance – Self-Insurance	77,120.68	111,399.99	4,281.02	192,801.69
Total Personnel Services – Employee Benefits	\$242,514.52	\$307,414.66	\$56,357.11	\$606,286.29
300 <u>Purchased Professional and Technical Services</u>				
322 Professional Educational Services – lus	459,589.39	762,156.17		1,221,745.56
329 Professional Educational Services – Other	209,403.11	67,434.26	35,272.00	312,109.37
Total Purchased Professional and Technical Services	\$668,992.50	\$829,590.43	\$35,272.00	\$1,533,854.93
500 <u>Other Purchased Services</u>				
561 Tuition To Other School Districts Within the State		17,054.70		17,054.70
567 Tuition To Approved Private Schools (APS) and PA Chartered Schools for the Deaf and Blind		13,203.00		13,203.00
580 Travel	13.80			13.80
Total Other Purchased Services	\$13.80	\$30,257.70		\$30,271.50
600 <u>Supplies</u>				
610 General Supplies	3,937.35	1,343.82		5,281.17
Total Supplies	\$3,937.35	\$1,343.82		\$5,281.17
Total 1230 Emotional Support	\$1,275,480.89	\$1,468,436.30	\$338,669.36	\$3,082,586.55

LEA : 124158503 Unionville-Chadds Ford SD

Printed 1/6/2022 12:00:58 PM

General Fund (10)

1240 Academic Support

	<u>Elementary</u>	<u>Secondary</u>	<u>Federal</u>	<u>Total</u>
100 <u>Personnel Services – Salaries</u>				
100 Personnel Services – Salaries	2,739,502.64	1,842,715.48	160,406.50	4,742,624.62
Total Personnel Services – Salaries	\$2,739,502.64	\$1,842,715.48	\$160,406.50	\$4,742,624.62
200 <u>Personnel Services – Employee Benefits</u>				
220 Social Security Contributions	203,733.52	141,189.46	6,135.55	351,058.53
230 PSERS Retirement Contributions	947,342.31	657,296.69	27,678.14	1,632,317.14
250 Unemployment Compensation	13,166.82	9,024.45		22,191.27
260 Workers' Compensation	16,157.48	10,828.72		26,986.20
270 Group Insurance – Self-Insurance	691,547.65	468,984.53		1,160,532.18
Total Personnel Services – Employee Benefits	\$1,871,947.78	\$1,287,323.85	\$33,813.69	\$3,193,085.32
300 <u>Purchased Professional and Technical Services</u>				
322 Professional Educational Services – lus	23,041.95	145,619.70		168,661.65
329 Professional Educational Services – Other	230,087.53	104,844.33	14,400.00	349,331.86
Total Purchased Professional and Technical Services	\$253,129.48	\$250,464.03	\$14,400.00	\$517,993.51
600 <u>Supplies</u>				
610 General Supplies	3,602.85	2,482.07		6,084.92
640 Books and Periodicals	2,076.24			2,076.24
Total Supplies	\$5,679.09	\$2,482.07		\$8,161.16
Total 1240 Academic Support	\$4,870,258.99	\$3,382,985.43	\$208,620.19	\$8,461,864.61

LEA : 124158503 Unionville-Chadds Ford SD

Printed 1/6/2022 12:00:58 PM

General Fund (10)

1241 Learning Support – Public	Elementary	Secondary	Federal	Total
100 Personnel Services – Salaries				
100 Personnel Services – Salaries	2,343,048.73	1,625,247.90	160,406.50	4,128,703.13
Total Personnel Services – Salaries	\$2,343,048.73	\$1,625,247.90	\$160,406.50	\$4,128,703.13
200 Personnel Services – Employee Benefits				
220 Social Security Contributions	174,238.47	125,307.51	6,135.55	305,681.53
230 PSERS Retirement Contributions	809,854.73	583,264.91	27,678.14	1,420,797.78
250 Unemployment Compensation	12,365.49	8,592.97		20,958.46
260 Workers' Compensation	13,604.87	9,454.24		23,059.11
270 Group Insurance – Self-Insurance	617,516.27	429,121.48		1,046,637.75
Total Personnel Services – Employee Benefits	\$1,627,579.83	\$1,155,741.11	\$33,813.69	\$2,817,134.63
300 Purchased Professional and Technical Services				
322 Professional Educational Services – lus	23,041.95	145,619.70		168,661.65
329 Professional Educational Services – Other	230,087.53	104,844.33	14,400.00	349,331.86
Total Purchased Professional and Technical Services	\$253,129.48	\$250,464.03	\$14,400.00	\$517,993.51
600 Supplies				
610 General Supplies	1,905.21	2,482.07		4,387.28
640 Books and Periodicals	2,076.24			2,076.24
Total Supplies	\$3,981.45	\$2,482.07		\$6,463.52
Total 1241 Learning Support – Public	\$4,227,739.49	\$3,033,935.11	\$208,620.19	\$7,470,294.79

LEA : 124158503 Unionville-Chadds Ford SD

Printed 1/6/2022 12:00:58 PM

General Fund (10)

1243 Gifted Support

	<u>Elementary</u>	<u>Secondary</u>	<u>Federal</u>	<u>Total</u>
100 <u>Personnel Services – Salaries</u>				
100 Personnel Services – Salaries	396,453.91	217,467.58		613,921.49
Total Personnel Services – Salaries	\$396,453.91	\$217,467.58		\$613,921.49
200 <u>Personnel Services – Employee Benefits</u>				
220 Social Security Contributions	29,495.05	15,881.95		45,377.00
230 PSERS Retirement Contributions	137,487.58	74,031.78		211,519.36
250 Unemployment Compensation	801.33	431.48		1,232.81
260 Workers' Compensation	2,552.61	1,374.48		3,927.09
270 Group Insurance – Self-Insurance	74,031.38	39,863.05		113,894.43
Total Personnel Services – Employee Benefits	\$244,367.95	\$131,582.74		\$375,950.69
600 <u>Supplies</u>				
610 General Supplies	1,697.64			1,697.64
Total Supplies	\$1,697.64			\$1,697.64
Total 1243 Gifted Support	\$642,519.50	\$349,050.32		\$991,569.82

LEA : 124158503 Unionville-Chadds Ford SD

Printed 1/6/2022 12:00:58 PM

General Fund (10)				
1270 Multi-Handicapped Support	<u>Elementary</u>	<u>Secondary</u>	<u>Federal</u>	<u>Total</u>
300 <u>Purchased Professional and Technical Services</u>				
322 Professional Educational Services – Ius	126,975.22	53,350.12		180,325.34
329 Professional Educational Services – Other		54,444.00		54,444.00
Total Purchased Professional and Technical Services	\$126,975.22	\$107,794.12		\$234,769.34
500 <u>Other Purchased Services</u>				
580 Travel	500.47	500.46		1,000.93
Total Other Purchased Services	\$500.47	\$500.46		\$1,000.93
600 <u>Supplies</u>				
610 General Supplies	1,066.73	1,066.72		2,133.45
Total Supplies	\$1,066.73	\$1,066.72		\$2,133.45
Total 1270 Multi-Handicapped Support	\$128,542.42	\$109,361.30		\$237,903.72

LEA : 124158503 Unionville-Chadds Ford SD

Printed 1/6/2022 12:00:58 PM

General Fund (10)

1280 Early Intervention Support

	<u>Elementary</u>	<u>Secondary</u>	<u>Federal</u>	<u>Total</u>
300 <u>Purchased Professional and Technical Services</u>				
322 Professional Educational Services – lus	78,972.36			78,972.36
Total Purchased Professional and Technical Services	\$78,972.36			\$78,972.36
Total 1280 Early Intervention Support	\$78,972.36			\$78,972.36

LEA : 124158503 Unionville-Chadds Ford SD

Printed 1/6/2022 12:00:58 PM

General Fund (10)

1290 Special Programs - Other Support	Elementary	Secondary	Federal	Total
100 Personnel Services – Salaries				
100 Personnel Services – Salaries	108,395.95	91,395.80	184,711.00	384,502.75
Total Personnel Services – Salaries	\$108,395.95	\$91,395.80	\$184,711.00	\$384,502.75
200 Personnel Services – Employee Benefits				
220 Social Security Contributions	14,827.24	13,686.63		28,513.87
230 PSERS Retirement Contributions	2,878.09	1,430.85	31,872.00	36,180.94
250 Unemployment Compensation	274.78	253.68		528.46
260 Workers' Compensation	91.63	84.59		176.22
270 Group Insurance – Self-Insurance			21,587.83	21,587.83
Total Personnel Services – Employee Benefits	\$18,071.74	\$15,455.75	\$53,459.83	\$86,987.32
300 Purchased Professional and Technical Services				
322 Professional Educational Services – lus	36,459.84	1,373.57		37,833.41
329 Professional Educational Services – Other	65,158.74	12,673.43		77,832.17
330 Other Professional Services	4,884.14	534,459.00		539,343.14
Total Purchased Professional and Technical Services	\$106,502.72	\$548,506.00		\$655,008.72
400 Purchased Property Services				
430 Repairs and Maintenance Services	1,589.52	1,589.52		3,179.04
Total Purchased Property Services	\$1,589.52	\$1,589.52		\$3,179.04
500 Other Purchased Services				
562 Tuition To Pennsylvania Charter Schools	114,282.17	184,464.80		298,746.97
567 Tuition To Approved Private Schools (APS) and PA Chartered Schools for the Deaf and Blind	52,556.16			52,556.16
569 Tuition – Other	18,770.83	30,261.10		49,031.93
580 Travel	635.02	518.04		1,153.06
Total Other Purchased Services	\$186,244.18	\$215,243.94		\$401,488.12
600 Supplies				
610 General Supplies	613.39	2,345.02		2,958.41
650 Supplies & Fees – Technology Related	17,919.41	19,901.52		37,820.93
Total Supplies	\$18,532.80	\$22,246.54		\$40,779.34
Total 1290 Special Programs - Other Support	\$439,336.91	\$894,437.55	\$238,170.83	\$1,571,945.29

LEA : 124158503 Unionville-Chadds Ford SD

Printed 1/6/2022 12:00:58 PM

General Fund (10)

1300 Vocational Education

500 Other Purchased Services

	<u>Elementary</u>	<u>Secondary</u>	<u>Federal</u>	<u>Total</u>
564 Tuition To Career and Technology Centers		786,153.03		786,153.03
Total Other Purchased Services		\$786,153.03		\$786,153.03
Total 1300 Vocational Education		\$786,153.03		\$786,153.03

LEA : 124158503 Unionville-Chadds Ford SD

Printed 1/6/2022 12:00:58 PM

General Fund (10)

1400 Other Instructional Programs – Elementary / Secondary	<u>Elementary</u>	<u>Secondary</u>	<u>Federal</u>	<u>Total</u>
100 <u>Personnel Services – Salaries</u>				
100 Personnel Services – Salaries	434.54	843.52		1,278.06
Total Personnel Services – Salaries	\$434.54	\$843.52		\$1,278.06
200 <u>Personnel Services – Employee Benefits</u>				
220 Social Security Contributions	33.09	64.23		97.32
230 PSERS Retirement Contributions	1,419.40	2,755.32		4,174.72
260 Workers’ Compensation	68.47	132.92		201.39
Total Personnel Services – Employee Benefits	\$1,520.96	\$2,952.47		\$4,473.43
300 <u>Purchased Professional and Technical Services</u>				
329 Professional Educational Services – Other	378.00	15,673.70		16,051.70
Total Purchased Professional and Technical Services	\$378.00	\$15,673.70		\$16,051.70
500 <u>Other Purchased Services</u>				
561 Tuition To Other School Districts Within the State		123,115.47		123,115.47
599 Other Miscellaneous Purchased Services		223,417.14		223,417.14
Total Other Purchased Services		\$346,532.61		\$346,532.61
Total 1400 Other Instructional Programs – Elementary / Secondary	\$2,333.50	\$366,002.30		\$368,335.80

LEA : 124158503 Unionville-Chadds Ford SD

Printed 1/6/2022 12:00:58 PM

General Fund (10)

1410 Drivers' Education

	<u>Elementary</u>	<u>Secondary</u>	<u>Federal</u>	<u>Total</u>
300 <u>Purchased Professional and Technical Services</u>				
329 Professional Educational Services – Other		15,673.70		15,673.70
Total Purchased Professional and Technical Services		\$15,673.70		\$15,673.70
Total 1410 Drivers' Education		\$15,673.70		\$15,673.70

LEA : 124158503 Unionville-Chadds Ford SD

Printed 1/6/2022 12:00:58 PM

General Fund (10)

1430 Homebound Instruction	<u>Elementary</u>	<u>Secondary</u>	<u>Federal</u>	<u>Total</u>
100 <u>Personnel Services – Salaries</u>				
100 Personnel Services – Salaries	434.54	843.52		1,278.06
Total Personnel Services – Salaries	\$434.54	\$843.52		\$1,278.06
200 <u>Personnel Services – Employee Benefits</u>				
220 Social Security Contributions	33.09	64.23		97.32
230 PSERS Retirement Contributions	1,419.40	2,755.32		4,174.72
260 Workers’ Compensation	68.47	132.92		201.39
Total Personnel Services – Employee Benefits	\$1,520.96	\$2,952.47		\$4,473.43
300 <u>Purchased Professional and Technical Services</u>				
329 Professional Educational Services – Other	378.00			378.00
Total Purchased Professional and Technical Services	\$378.00			\$378.00
Total 1430 Homebound Instruction	\$2,333.50	\$3,795.99		\$6,129.49

LEA : 124158503 Unionville-Chadds Ford SD

Printed 1/6/2022 12:00:58 PM

General Fund (10)

1440 Alternative Regular Education Programs

Elementary Secondary Federal Total

500 Other Purchased Services

561 Tuition To Other School Districts Within the State		123,115.47		123,115.47
599 Other Miscellaneous Purchased Services		223,417.14		223,417.14
Total Other Purchased Services		\$346,532.61		\$346,532.61
Total 1440 Alternative Regular Education Programs		\$346,532.61		\$346,532.61

LEA : 124158503 Unionville-Chadds Ford SD

Printed 1/6/2022 12:00:58 PM

General Fund (10)

1441 Adjudicated / Court-Placed Programs

Elementary Secondary Federal Total

500 Other Purchased Services

561 Tuition To Other School Districts Within the State		123,115.47		123,115.47
599 Other Miscellaneous Purchased Services		223,417.14		223,417.14
Total Other Purchased Services		\$346,532.61		\$346,532.61
Total 1441 Adjudicated / Court-Placed Programs		\$346,532.61		\$346,532.61

LEA : 124158503 Unionville-Chadds Ford SD

Printed 1/6/2022 12:01:05 PM

General Fund (10)

2000 Support Services

Total

100	<u>Personnel Services – Salaries</u>	
100	Personnel Services – Salaries	12,781,661.78
Total Personnel Services – Salaries		\$12,781,661.78
200	<u>Personnel Services – Employee Benefits</u>	
220	Social Security Contributions	955,063.15
230	PSERS Retirement Contributions	4,412,683.43
240	Tuition Reimbursement	285,689.20
250	Unemployment Compensation	41,212.57
260	Workers' Compensation	78,793.64
270	Group Insurance – Self-Insurance	2,673,169.39
Total Personnel Services – Employee Benefits		\$8,446,611.38
300	<u>Purchased Professional and Technical Services</u>	
322	Professional Educational Services – Ius	19,876.04
329	Professional Educational Services – Other	381,675.59
330	Other Professional Services	293,336.79
340	Technical Services	21,214.00
350	Security / Safety Services	4,019.65
390	Other Purchased Professional and Technical Services	1,987.00
Total Purchased Professional and Technical Services		\$722,109.07
400	<u>Purchased Property Services</u>	
410	Cleaning Services	36,641.99
420	Utility Services	107,104.71
430	Repairs and Maintenance Services	647,292.42
440	Rentals	5,652.34
Total Purchased Property Services		\$796,691.46
500	<u>Other Purchased Services</u>	
516	Student Transportation Services From the IU	6,755.70
520	Insurance – General	5,751.13
521	Fire Insurance	144,048.00
522	Automotive Liability Insurance	112,225.00
523	General Property and Liability Insurance	113,931.00
529	Other Insurance	134,460.00
530	Communications	82,950.80
541	Advertising Related to Federal Grant Awards	2,233.00
549	Other Advertising/Public Relations	2,180.58
550	Printing and Binding	11,405.47
580	Travel	22,019.99
591	Services Purchased Locally	22,994.49
595	IU Payments By Withholding	40,968.17
Total Other Purchased Services		\$701,923.33
600	<u>Supplies</u>	
610	General Supplies	1,329,212.92
620	Energy	1,246,680.25
630	Food	6,876.91

LEA : 124158503 Unionville-Chadds Ford SD

Printed 1/6/2022 12:01:05 PM

General Fund (10)

2000 Support Services

Total

600 <u>Supplies</u>	
640 Books and Periodicals	60,279.64
650 Supplies & Fees – Technology Related	11,175.00
Total Supplies	\$2,654,224.72
700 <u>Property</u>	
752 Capital Equipment – Original and Additional	817,414.07
762 Capitalized Equipment - Replacement	1,052,079.84
Total Property	\$1,869,493.91
800 <u>Other Objects</u>	
810 Dues and Fees	31,189.21
Total Other Objects	\$31,189.21
Total 2000 Support Services	\$28,003,904.86

LEA : 124158503 Unionville-Chadds Ford SD

Printed 1/6/2022 12:01:05 PM

General Fund (10)

2100 Support Services – Students

	<u>Elementary</u>	<u>Secondary</u>	<u>Federal</u>	<u>Total</u>
100 <u>Personnel Services – Salaries</u>				
100 Personnel Services – Salaries	1,066,008.82	1,359,175.77	69,814.00	2,494,998.59
Total Personnel Services – Salaries	\$1,066,008.82	\$1,359,175.77	\$69,814.00	\$2,494,998.59
200 <u>Personnel Services – Employee Benefits</u>				
220 Social Security Contributions	80,796.84	102,550.76		183,347.60
230 PSERS Retirement Contributions	357,481.04	456,708.34	12,406.00	826,595.38
250 Unemployment Compensation	2,998.13	3,870.66		6,868.79
260 Workers' Compensation	5,701.41	7,162.35		12,863.76
270 Group Insurance – Self-Insurance	171,535.58	216,845.07	23,277.00	411,657.65
Total Personnel Services – Employee Benefits	\$618,513.00	\$787,137.18	\$35,683.00	\$1,441,333.18
300 <u>Purchased Professional and Technical Services</u>				
322 Professional Educational Services – lus	6,189.29	13,686.75		19,876.04
329 Professional Educational Services – Other	45,596.15	24,151.92		69,748.07
Total Purchased Professional and Technical Services	\$51,785.44	\$37,838.67		\$89,624.11
500 <u>Other Purchased Services</u>				
541 Advertising Related to Federal Grant Awards	1,116.50	1,116.50		2,233.00
580 Travel	255.00	1,747.94		2,156.88
Total Other Purchased Services	\$1,371.50	\$2,864.44		\$4,389.88
600 <u>Supplies</u>				
610 General Supplies	9,500.33	6,328.76		15,829.09
640 Books and Periodicals	159.31	550.03		1,006.34
Total Supplies	\$9,659.64	\$6,878.79		\$16,835.43
700 <u>Property</u>				
752 Capital Equipment – Original and Additional	112.00	112.00		224.00
Total Property	\$112.00	\$112.00		\$224.00
Total 2100 Support Services – Students	\$1,747,450.40	\$2,194,006.85	\$105,497.00	\$4,047,405.19

LEA : 124158503 Unionville-Chadds Ford SD

Printed 1/6/2022 12:01:05 PM

General Fund (10)

2110 Supervision of Student Services	Elementary	Secondary	Federal	Total
100 <u>Personnel Services – Salaries</u>				
100 Personnel Services – Salaries	150,054.25	149,448.99		299,503.24
Total Personnel Services – Salaries	\$150,054.25	\$149,448.99		\$299,503.24
200 <u>Personnel Services – Employee Benefits</u>				
220 Social Security Contributions	11,037.65	11,037.65		22,075.30
230 PSERS Retirement Contributions	49,400.90	49,400.90		98,801.80
250 Unemployment Compensation	352.29	352.28		704.57
260 Workers' Compensation	855.91	855.90		1,711.81
270 Group Insurance – Self-Insurance	30,892.93	30,892.93		61,785.86
Total Personnel Services – Employee Benefits	\$92,539.68	\$92,539.66		\$185,079.34
300 <u>Purchased Professional and Technical Services</u>				
329 Professional Educational Services – Other	36,694.83	8,286.11		44,980.94
Total Purchased Professional and Technical Services	\$36,694.83	\$8,286.11		\$44,980.94
500 <u>Other Purchased Services</u>				
541 Advertising Related to Federal Grant Awards	1,116.50	1,116.50		2,233.00
580 Travel	205.00	205.00		410.00
Total Other Purchased Services	\$1,321.50	\$1,321.50		\$2,643.00
600 <u>Supplies</u>				
640 Books and Periodicals	159.31	159.31		318.62
Total Supplies	\$159.31	\$159.31		\$318.62
700 <u>Property</u>				
752 Capital Equipment – Original and Additional	112.00	112.00		224.00
Total Property	\$112.00	\$112.00		\$224.00
Total 2110 Supervision of Student Services	\$280,881.57	\$251,867.57		\$532,749.14

LEA : 124158503 Unionville-Chadds Ford SD

Printed 1/6/2022 12:01:05 PM

General Fund (10)

2119 Supervision of Student Services – All Other Supervision

	<u>Elementary</u>	<u>Secondary</u>	<u>Federal</u>	<u>Total</u>
100 <u>Personnel Services – Salaries</u>				
100 Personnel Services – Salaries	150,054.25	149,448.99		299,503.24
Total Personnel Services – Salaries	\$150,054.25	\$149,448.99		\$299,503.24
200 <u>Personnel Services – Employee Benefits</u>				
220 Social Security Contributions	11,037.65	11,037.65		22,075.30
230 PSERS Retirement Contributions	49,400.90	49,400.90		98,801.80
250 Unemployment Compensation	352.29	352.28		704.57
260 Workers' Compensation	855.91	855.90		1,711.81
270 Group Insurance – Self-Insurance	30,892.93	30,892.93		61,785.86
Total Personnel Services – Employee Benefits	\$92,539.68	\$92,539.66		\$185,079.34
300 <u>Purchased Professional and Technical Services</u>				
329 Professional Educational Services – Other	36,694.83	8,286.11		44,980.94
Total Purchased Professional and Technical Services	\$36,694.83	\$8,286.11		\$44,980.94
500 <u>Other Purchased Services</u>				
541 Advertising Related to Federal Grant Awards	1,116.50	1,116.50		2,233.00
580 Travel	205.00	205.00		410.00
Total Other Purchased Services	\$1,321.50	\$1,321.50		\$2,643.00
600 <u>Supplies</u>				
640 Books and Periodicals	159.31	159.31		318.62
Total Supplies	\$159.31	\$159.31		\$318.62
700 <u>Property</u>				
752 Capital Equipment – Original and Additional	112.00	112.00		224.00
Total Property	\$112.00	\$112.00		\$224.00
Total 2119 Supervision of Student Services – All Other Supervision	\$280,881.57	\$251,867.57		\$532,749.14

LEA : 124158503 Unionville-Chadds Ford SD

Printed 1/6/2022 12:01:05 PM

General Fund (10)

2120 Guidance Services	Elementary	Secondary	Federal	Total
100 <u>Personnel Services – Salaries</u>				
100 Personnel Services – Salaries	683,272.57	977,044.78		1,660,317.35
Total Personnel Services – Salaries	\$683,272.57	\$977,044.78		\$1,660,317.35
200 <u>Personnel Services – Employee Benefits</u>				
220 Social Security Contributions	50,596.60	72,350.53		122,947.13
230 PSERS Retirement Contributions	230,788.65	330,015.96		560,804.61
250 Unemployment Compensation	2,029.43	2,901.98		4,931.41
260 Workers' Compensation	3,398.01	4,858.97		8,256.98
270 Group Insurance – Self-Insurance	105,383.44	150,692.93		256,076.37
Total Personnel Services – Employee Benefits	\$392,196.13	\$560,820.37		\$953,016.50
300 <u>Purchased Professional and Technical Services</u>				
322 Professional Educational Services – lus	6,189.29	6,189.29		12,378.58
329 Professional Educational Services – Other	101.32	10,865.81		10,967.13
Total Purchased Professional and Technical Services	\$6,290.61	\$17,055.10		\$23,345.71
500 <u>Other Purchased Services</u>				
580 Travel		1,542.94		1,542.94
Total Other Purchased Services		\$1,542.94		\$1,542.94
600 <u>Supplies</u>				
640 Books and Periodicals		390.72		390.72
Total Supplies		\$390.72		\$390.72
Total 2120 Guidance Services	\$1,081,759.31	\$1,556,853.91		\$2,638,613.22

LEA : 124158503 Unionville-Chadds Ford SD

Printed 1/6/2022 12:01:05 PM

General Fund (10)

2140 Psychological Services	Elementary	Secondary	Federal	Total
100 Personnel Services – Salaries				
100 Personnel Services – Salaries	232,682.00	232,682.00	69,814.00	535,178.00
Total Personnel Services – Salaries	\$232,682.00	\$232,682.00	\$69,814.00	\$535,178.00
200 Personnel Services – Employee Benefits				
220 Social Security Contributions	19,162.59	19,162.58		38,325.17
230 PSERS Retirement Contributions	77,291.49	77,291.48	12,406.00	166,988.97
250 Unemployment Compensation	616.41	616.40		1,232.81
260 Workers' Compensation	1,447.49	1,447.48		2,894.97
270 Group Insurance – Self-Insurance	35,259.21	35,259.21	23,277.00	93,795.42
Total Personnel Services – Employee Benefits	\$133,777.19	\$133,777.15	\$35,683.00	\$303,237.34
300 Purchased Professional and Technical Services				
322 Professional Educational Services – lus		7,497.46		7,497.46
329 Professional Educational Services – Other	8,800.00	5,000.00		13,800.00
Total Purchased Professional and Technical Services	\$8,800.00	\$12,497.46		\$21,297.46
500 Other Purchased Services				
580 Travel	50.00			50.00
Total Other Purchased Services	\$50.00			\$50.00
600 Supplies				
610 General Supplies	9,500.33	6,328.76		15,829.09
Total Supplies	\$9,500.33	\$6,328.76		\$15,829.09
Total 2140 Psychological Services	\$384,809.52	\$385,285.37	\$105,497.00	\$875,591.89

LEA : 124158503 Unionville-Chadds Ford SD

Printed 1/6/2022 12:01:05 PM

General Fund (10)

2160 Social Work Services	<u>Elementary</u>	<u>Secondary</u>	<u>Federal</u>	<u>Total</u>
500 <u>Other Purchased Services</u>				
580 Travel				153.94
Total Other Purchased Services				\$153.94
600 <u>Supplies</u>				
640 Books and Periodicals				297.00
Total Supplies				\$297.00
Total 2160 Social Work Services				\$450.94

LEA : 124158503 Unionville-Chadds Ford SD

Printed 1/6/2022 12:01:05 PM

General Fund (10)

2200 Support Services – Instructional Staff	Elementary	Secondary	Federal	Total
100 Personnel Services – Salaries				
100 Personnel Services – Salaries	1,062,508.46	779,169.34	10,132.50	1,851,810.30
Total Personnel Services – Salaries	\$1,062,508.46	\$779,169.34	\$10,132.50	\$1,851,810.30
200 Personnel Services – Employee Benefits				
220 Social Security Contributions	83,916.78	59,879.26		143,796.04
230 PSERS Retirement Contributions	380,247.79	272,400.76		652,648.55
240 Tuition Reimbursement	120,118.08	120,118.08		240,236.16
250 Unemployment Compensation	2,920.20	1,659.12		4,579.32
260 Workers' Compensation	7,616.30	5,524.35		13,140.65
270 Group Insurance – Self-Insurance	185,700.04	114,296.41		299,996.45
Total Personnel Services – Employee Benefits	\$780,519.19	\$573,877.98		\$1,354,397.17
300 Purchased Professional and Technical Services				
329 Professional Educational Services – Other	41,476.08	77,762.49	70,151.26	189,389.83
Total Purchased Professional and Technical Services	\$41,476.08	\$77,762.49	\$70,151.26	\$189,389.83
400 Purchased Property Services				
430 Repairs and Maintenance Services	292,721.63	18,448.50		311,170.13
Total Purchased Property Services	\$292,721.63	\$18,448.50		\$311,170.13
500 Other Purchased Services				
530 Communications	5,226.22	4,746.10		9,972.32
580 Travel	5,192.22	5,618.94	2,334.42	13,145.58
591 Services Purchased Locally	689.23			689.23
Total Other Purchased Services	\$11,107.67	\$10,365.04	\$2,334.42	\$23,807.13
600 Supplies				
610 General Supplies	56,176.25	54,047.09	26,738.69	136,962.03
630 Food		62.00		62.00
640 Books and Periodicals	17,146.62	37,822.27		54,968.89
Total Supplies	\$73,322.87	\$91,931.36	\$26,738.69	\$191,992.92
700 Property				
752 Capital Equipment – Original and Additional	489,365.46	253,811.12	68,591.75	811,768.33
762 Capitalized Equipment - Replacement	242,012.59	236,277.03		478,289.62
Total Property	\$731,378.05	\$490,088.15	\$68,591.75	\$1,290,057.95
Total 2200 Support Services – Instructional Staff	\$2,993,033.95	\$2,041,642.86	\$177,948.62	\$5,212,625.43

LEA : 124158503 Unionville-Chadds Ford SD

Printed 1/6/2022 12:01:05 PM

General Fund (10)

2220 Technology Support Services	Elementary	Secondary	Federal	Total
100 <u>Personnel Services – Salaries</u>				
100 Personnel Services – Salaries	413,532.79	340,231.13		753,763.92
Total Personnel Services – Salaries	\$413,532.79	\$340,231.13		\$753,763.92
200 <u>Personnel Services – Employee Benefits</u>				
220 Social Security Contributions	31,028.06	25,386.59		56,414.65
230 PSERS Retirement Contributions	124,754.67	102,072.01		226,826.68
250 Unemployment Compensation	968.68	792.55		1,761.23
260 Workers' Compensation	2,727.57	2,231.64		4,959.21
270 Group Insurance – Self-Insurance	69,192.73	56,612.23		125,804.96
Total Personnel Services – Employee Benefits	\$228,671.71	\$187,095.02		\$415,766.73
400 <u>Purchased Property Services</u>				
430 Repairs and Maintenance Services	3,026.74			3,026.74
Total Purchased Property Services	\$3,026.74			\$3,026.74
600 <u>Supplies</u>				
610 General Supplies	17,379.53	16,071.94		33,451.47
Total Supplies	\$17,379.53	\$16,071.94		\$33,451.47
700 <u>Property</u>				
752 Capital Equipment – Original and Additional	10,710.30	13,953.48		24,663.78
762 Capitalized Equipment - Replacement	5,735.56			5,735.56
Total Property	\$16,445.86	\$13,953.48		\$30,399.34
Total 2220 Technology Support Services	\$679,056.63	\$557,351.57		\$1,236,408.20

LEA : 124158503 Unionville-Chadds Ford SD

Printed 1/6/2022 12:01:05 PM

General Fund (10)				
2240 Computer-Assisted Instruction Support Services	<u>Elementary</u>	<u>Secondary</u>	<u>Federal</u>	<u>Total</u>
300 <u>Purchased Professional and Technical Services</u>				
329 Professional Educational Services – Other	32,327.08	50,162.95		82,490.03
Total Purchased Professional and Technical Services	\$32,327.08	\$50,162.95		\$82,490.03
400 <u>Purchased Property Services</u>				
430 Repairs and Maintenance Services	289,694.89	18,448.50		308,143.39
Total Purchased Property Services	\$289,694.89	\$18,448.50		\$308,143.39
500 <u>Other Purchased Services</u>				
530 Communications	4,746.10	4,746.10		9,492.20
580 Travel	212.28	212.28		424.56
Total Other Purchased Services	\$4,958.38	\$4,958.38		\$9,916.76
600 <u>Supplies</u>				
610 General Supplies	37,144.63	37,144.63		74,289.26
Total Supplies	\$37,144.63	\$37,144.63		\$74,289.26
700 <u>Property</u>				
752 Capital Equipment – Original and Additional	197,116.91	197,116.91	25,000.00	419,233.82
762 Capitalized Equipment - Replacement	236,277.03	236,277.03		472,554.06
Total Property	\$433,393.94	\$433,393.94	\$25,000.00	\$891,787.88
Total 2240 Computer-Assisted Instruction Support Services	\$797,518.92	\$544,108.40	\$25,000.00	\$1,366,627.32

LEA : 124158503 Unionville-Chadds Ford SD

Printed 1/6/2022 12:01:05 PM

General Fund (10)

2250 School Library Services	Elementary	Secondary	Federal	Total
100 Personnel Services – Salaries				
100 Personnel Services – Salaries	334,907.64	106,162.42		441,070.06
Total Personnel Services – Salaries	\$334,907.64	\$106,162.42		\$441,070.06
200 Personnel Services – Employee Benefits				
220 Social Security Contributions	30,525.23	9,639.55		40,164.78
230 PSERS Retirement Contributions	140,660.37	44,419.07		185,079.44
250 Unemployment Compensation	1,606.28	507.24		2,113.52
260 Workers' Compensation	2,621.08	827.71		3,448.79
270 Group Insurance – Self-Insurance	87,691.27	27,691.98		115,383.25
Total Personnel Services – Employee Benefits	\$263,104.23	\$83,085.55		\$346,189.78
600 Supplies				
640 Books and Periodicals	16,909.62	37,822.27		54,731.89
Total Supplies	\$16,909.62	\$37,822.27		\$54,731.89
Total 2250 School Library Services	\$614,921.49	\$227,070.24		\$841,991.73

LEA : 124158503 Unionville-Chadds Ford SD

Printed 1/6/2022 12:01:05 PM

General Fund (10)				
2260 Instruction and Curriculum Development Services	<u>Elementary</u>	<u>Secondary</u>	<u>Federal</u>	<u>Total</u>
100 <u>Personnel Services – Salaries</u>				
100 Personnel Services – Salaries	287,372.03	300,429.07		587,801.10
Total Personnel Services – Salaries	\$287,372.03	\$300,429.07		\$587,801.10
200 <u>Personnel Services – Employee Benefits</u>				
220 Social Security Contributions	20,131.44	20,953.14		41,084.58
230 PSERS Retirement Contributions	105,008.23	109,294.28		214,302.51
250 Unemployment Compensation	345.24	359.33		704.57
260 Workers' Compensation	2,121.64	2,208.23		4,329.87
270 Group Insurance – Self-Insurance	28,816.04	29,992.20		58,808.24
Total Personnel Services – Employee Benefits	\$156,422.59	\$162,807.18		\$319,229.77
300 <u>Purchased Professional and Technical Services</u>				
329 Professional Educational Services – Other		3,432.15	22,550.00	25,982.15
Total Purchased Professional and Technical Services		\$3,432.15	\$22,550.00	\$25,982.15
500 <u>Other Purchased Services</u>				
530 Communications	480.12			480.12
580 Travel	175.85	(155.00)		20.85
Total Other Purchased Services	\$655.97	(\$155.00)		\$500.97
600 <u>Supplies</u>				
610 General Supplies			26,738.69	26,738.69
640 Books and Periodicals	237.00			237.00
Total Supplies	\$237.00		\$26,738.69	\$26,975.69
700 <u>Property</u>				
752 Capital Equipment – Original and Additional	281,538.25	42,740.73	43,591.75	367,870.73
Total Property	\$281,538.25	\$42,740.73	\$43,591.75	\$367,870.73
Total 2260 Instruction and Curriculum Development Services	\$726,225.84	\$509,254.13	\$92,880.44	\$1,328,360.41

LEA : 124158503 Unionville-Chadds Ford SD

Printed 1/6/2022 12:01:05 PM

General Fund (10)

2270 Instructional Staff Professional Development Services	<u>Elementary</u>	<u>Secondary</u>	<u>Federal</u>	<u>Total</u>
100 <u>Personnel Services – Salaries</u>				
100 Personnel Services – Salaries	12,096.00	10,500.00	10,132.50	32,728.50
Total Personnel Services – Salaries	\$12,096.00	\$10,500.00	\$10,132.50	\$32,728.50
200 <u>Personnel Services – Employee Benefits</u>				
220 Social Security Contributions	1,250.93	2,428.29		3,679.22
230 PSERS Retirement Contributions	4,258.22	8,265.95		12,524.17
240 Tuition Reimbursement	120,118.08	120,118.08		240,236.16
260 Workers' Compensation	85.59	166.15		251.74
Total Personnel Services – Employee Benefits	\$125,712.82	\$130,978.47		\$256,691.29
300 <u>Purchased Professional and Technical Services</u>				
329 Professional Educational Services – Other	9,149.00	24,167.39	47,601.26	80,917.65
Total Purchased Professional and Technical Services	\$9,149.00	\$24,167.39	\$47,601.26	\$80,917.65
500 <u>Other Purchased Services</u>				
580 Travel	4,804.09	5,561.66	2,334.42	12,700.17
591 Services Purchased Locally	689.23			689.23
Total Other Purchased Services	\$5,493.32	\$5,561.66	\$2,334.42	\$13,389.40
600 <u>Supplies</u>				
610 General Supplies	46.64	830.52		877.16
630 Food		62.00		62.00
Total Supplies	\$46.64	\$892.52		\$939.16
Total 2270 Instructional Staff Professional Development Services	\$152,497.78	\$172,100.04	\$60,068.18	\$384,666.00

LEA : 124158503 Unionville-Chadds Ford SD

Printed 1/6/2022 12:01:05 PM

General Fund (10)

2290 Other Instructional Staff Services	<u>Elementary</u>	<u>Secondary</u>	<u>Federal</u>	<u>Total</u>
100 <u>Personnel Services – Salaries</u>				
100 Personnel Services – Salaries	14,600.00	21,846.72		36,446.72
Total Personnel Services – Salaries	\$14,600.00	\$21,846.72		\$36,446.72
200 <u>Personnel Services – Employee Benefits</u>				
220 Social Security Contributions	981.12	1,471.69		2,452.81
230 PSERS Retirement Contributions	5,566.30	8,349.45		13,915.75
260 Workers’ Compensation	60.42	90.62		151.04
Total Personnel Services – Employee Benefits	\$6,607.84	\$9,911.76		\$16,519.60
600 <u>Supplies</u>				
610 General Supplies	1,605.45			1,605.45
Total Supplies	\$1,605.45			\$1,605.45
Total 2290 Other Instructional Staff Services	\$22,813.29	\$31,758.48		\$54,571.77

LEA : 124158503 Unionville-Chadds Ford SD

Printed 1/6/2022 12:01:05 PM

General Fund (10)

2300 Support Services – Administration	Elementary	Secondary	Federal	Total
100 Personnel Services – Salaries				
100 Personnel Services – Salaries	977,374.19	889,039.79		2,337,535.78
Total Personnel Services – Salaries	\$977,374.19	\$889,039.79		\$2,337,535.78
200 Personnel Services – Employee Benefits				
220 Social Security Contributions	71,425.85	65,931.55		171,696.75
230 PSERS Retirement Contributions	334,311.91	308,595.61		794,589.16
250 Unemployment Compensation	2,197.96	2,028.89		4,755.28
260 Workers' Compensation	6,466.62	5,969.19		14,651.09
270 Group Insurance – Self-Insurance	164,901.28	152,216.56		365,504.36
Total Personnel Services – Employee Benefits	\$579,303.62	\$534,741.80		\$1,351,196.64
300 Purchased Professional and Technical Services				
329 Professional Educational Services – Other	5,504.06	1,129.92		20,959.27
330 Other Professional Services				224,314.44
Total Purchased Professional and Technical Services	\$5,504.06	\$1,129.92		\$245,273.71
400 Purchased Property Services				
430 Repairs and Maintenance Services		22,685.35		22,685.35
Total Purchased Property Services		\$22,685.35		\$22,685.35
500 Other Purchased Services				
520 Insurance – General				5,751.13
530 Communications	31,495.70	13,524.46		45,510.16
549 Other Advertising/Public Relations				2,180.58
550 Printing and Binding	976.78	1,896.10		2,872.88
580 Travel				771.69
Total Other Purchased Services	\$32,472.48	\$15,420.56		\$57,086.44
600 Supplies				
610 General Supplies	6,003.85	15,319.44		23,422.12
630 Food	2,028.93	3,866.94		6,825.46
640 Books and Periodicals				2,958.53
Total Supplies	\$8,032.78	\$19,186.38		\$33,206.11
800 Other Objects				
810 Dues and Fees				26,737.57
Total Other Objects				\$26,737.57
Total 2300 Support Services – Administration	\$1,602,687.13	\$1,482,203.80		\$4,073,721.60

LEA : 124158503 Unionville-Chadds Ford SD

Printed 1/6/2022 12:01:05 PM

General Fund (10)

2310 Board Services

Elementary Secondary Federal Total

300 <u>Purchased Professional and Technical Services</u>				
329 Professional Educational Services – Other				9,195.00
Total Purchased Professional and Technical Services				\$9,195.00
500 <u>Other Purchased Services</u>				
520 Insurance – General				1,057.00
549 Other Advertising/Public Relations				2,180.58
580 Travel				19.69
Total Other Purchased Services				\$3,257.27
600 <u>Supplies</u>				
630 Food				596.75
Total Supplies				\$596.75
800 <u>Other Objects</u>				
810 Dues and Fees				20,927.57
Total Other Objects				\$20,927.57
Total 2310 Board Services				\$33,976.59

LEA : 124158503 Unionville-Chadds Ford SD

Printed 1/6/2022 12:01:05 PM

General Fund (10)

2330 Tax Assessment and Collection Services	<u>Elementary</u>	<u>Secondary</u>	<u>Federal</u>	<u>Total</u>
300 <u>Purchased Professional and Technical Services</u>				
329 Professional Educational Services – Other				4,580.29
Total Purchased Professional and Technical Services				\$4,580.29
500 <u>Other Purchased Services</u>				
520 Insurance – General				4,694.13
530 Communications				490.00
Total Other Purchased Services				\$5,184.13
600 <u>Supplies</u>				
610 General Supplies				2,098.83
Total Supplies				\$2,098.83
Total 2330 Tax Assessment and Collection Services				\$11,863.25

LEA : 124158503 Unionville-Chadds Ford SD

Printed 1/6/2022 12:01:05 PM

General Fund (10)

2350 Legal and Accounting Services	<u>Elementary</u>	<u>Secondary</u>	<u>Federal</u>	<u>Total</u>
300 <u>Purchased Professional and Technical Services</u>				
330 Other Professional Services				151,244.94
Total Purchased Professional and Technical Services				\$151,244.94
Total 2350 Legal and Accounting Services				\$151,244.94

LEA : 124158503 Unionville-Chadds Ford SD

Printed 1/6/2022 12:01:05 PM

General Fund (10)				
2360 Office of the Superintendent / Executive Director Services	<u>Elementary</u>	<u>Secondary</u>	<u>Federal</u>	<u>Total</u>
100 <u>Personnel Services – Salaries</u>				
100 Personnel Services – Salaries				471,121.80
Total Personnel Services – Salaries				\$471,121.80
200 <u>Personnel Services – Employee Benefits</u>				
220 Social Security Contributions				34,339.35
230 PSERS Retirement Contributions				151,681.64
250 Unemployment Compensation				528.43
260 Workers' Compensation				2,215.28
270 Group Insurance – Self-Insurance				48,386.52
Total Personnel Services – Employee Benefits				\$237,151.22
300 <u>Purchased Professional and Technical Services</u>				
329 Professional Educational Services – Other				550.00
330 Other Professional Services				73,069.50
Total Purchased Professional and Technical Services				\$73,619.50
500 <u>Other Purchased Services</u>				
530 Communications	7,869.00	7,869.00		15,738.00
580 Travel				752.00
Total Other Purchased Services	\$7,869.00	\$7,869.00		\$16,490.00
600 <u>Supplies</u>				
630 Food				332.84
640 Books and Periodicals				2,958.53
Total Supplies				\$3,291.37
800 <u>Other Objects</u>				
810 Dues and Fees				5,810.00
Total Other Objects				\$5,810.00
Total 2360 Office of the Superintendent / Executive Director Services	\$7,869.00	\$7,869.00		\$807,483.89

LEA : 124158503 Unionville-Chadds Ford SD

Printed 1/6/2022 12:01:05 PM

General Fund (10)

2380 Office of the Principal Services	Elementary	Secondary	Federal	Total
100 <u>Personnel Services – Salaries</u>				
100 Personnel Services – Salaries	977,374.19	889,039.79		1,866,413.98
Total Personnel Services – Salaries	\$977,374.19	\$889,039.79		\$1,866,413.98
200 <u>Personnel Services – Employee Benefits</u>				
220 Social Security Contributions	71,425.85	65,931.55		137,357.40
230 PSERS Retirement Contributions	334,311.91	308,595.61		642,907.52
250 Unemployment Compensation	2,197.96	2,028.89		4,226.85
260 Workers' Compensation	6,466.62	5,969.19		12,435.81
270 Group Insurance – Self-Insurance	164,901.28	152,216.56		317,117.84
Total Personnel Services – Employee Benefits	\$579,303.62	\$534,741.80		\$1,114,045.42
300 <u>Purchased Professional and Technical Services</u>				
329 Professional Educational Services – Other	5,504.06	1,129.92		6,633.98
Total Purchased Professional and Technical Services	\$5,504.06	\$1,129.92		\$6,633.98
400 <u>Purchased Property Services</u>				
430 Repairs and Maintenance Services		22,685.35		22,685.35
Total Purchased Property Services		\$22,685.35		\$22,685.35
500 <u>Other Purchased Services</u>				
530 Communications	23,626.70	5,655.46		29,282.16
550 Printing and Binding	976.78	1,896.10		2,872.88
Total Other Purchased Services	\$24,603.48	\$7,551.56		\$32,155.04
600 <u>Supplies</u>				
610 General Supplies	6,003.85	15,319.44		21,323.29
630 Food	2,028.93	3,866.94		5,895.87
Total Supplies	\$8,032.78	\$19,186.38		\$27,219.16
Total 2380 Office of the Principal Services	\$1,594,818.13	\$1,474,334.80		\$3,069,152.93

LEA : 124158503 Unionville-Chadds Ford SD

Printed 1/6/2022 12:01:05 PM

General Fund (10)				
2400 Support Services – Pupil Health	<u>Elementary</u>	<u>Secondary</u>	<u>Federal</u>	<u>Total</u>
100 <u>Personnel Services – Salaries</u>				
100 Personnel Services – Salaries				484,617.60
Total Personnel Services – Salaries				\$484,617.60
200 <u>Personnel Services – Employee Benefits</u>				
220 Social Security Contributions				34,032.75
230 PSERS Retirement Contributions				150,290.07
250 Unemployment Compensation				1,761.23
260 Workers' Compensation				2,819.45
270 Group Insurance – Self-Insurance				82,629.30
Total Personnel Services – Employee Benefits				\$271,532.80
300 <u>Purchased Professional and Technical Services</u>				
329 Professional Educational Services – Other				911.50
330 Other Professional Services				1,300.00
390 Other Purchased Professional and Technical Services				1,987.00
Total Purchased Professional and Technical Services				\$4,198.50
400 <u>Purchased Property Services</u>				
410 Cleaning Services				386.00
430 Repairs and Maintenance Services				516.00
Total Purchased Property Services				\$902.00
500 <u>Other Purchased Services</u>				
580 Travel				225.45
Total Other Purchased Services				\$225.45
600 <u>Supplies</u>				
610 General Supplies				10,969.36
650 Supplies & Fees – Technology Related				11,175.00
Total Supplies				\$22,144.36
700 <u>Property</u>				
762 Capitalized Equipment - Replacement				999.00
Total Property				\$999.00
Total 2400 Support Services – Pupil Health				\$784,619.71

LEA : 124158503 Unionville-Chadds Ford SD

Printed 1/6/2022 12:01:05 PM

General Fund (10)

2440 Nursing Services

	<u>Elementary</u>	<u>Secondary</u>	<u>Federal</u>	<u>Total</u>
100 <u>Personnel Services – Salaries</u>				
100 Personnel Services – Salaries				484,617.60
Total Personnel Services – Salaries				\$484,617.60
200 <u>Personnel Services – Employee Benefits</u>				
220 Social Security Contributions				34,032.75
230 PSERS Retirement Contributions				150,290.07
250 Unemployment Compensation				1,761.23
260 Workers' Compensation				2,819.45
270 Group Insurance – Self-Insurance				82,629.30
Total Personnel Services – Employee Benefits				\$271,532.80
300 <u>Purchased Professional and Technical Services</u>				
329 Professional Educational Services – Other				911.50
330 Other Professional Services				1,300.00
390 Other Purchased Professional and Technical Services				1,987.00
Total Purchased Professional and Technical Services				\$4,198.50
400 <u>Purchased Property Services</u>				
410 Cleaning Services				386.00
430 Repairs and Maintenance Services				516.00
Total Purchased Property Services				\$902.00
500 <u>Other Purchased Services</u>				
580 Travel				225.45
Total Other Purchased Services				\$225.45
600 <u>Supplies</u>				
610 General Supplies				10,969.36
650 Supplies & Fees – Technology Related				11,175.00
Total Supplies				\$22,144.36
700 <u>Property</u>				
762 Capitalized Equipment - Replacement				999.00
Total Property				\$999.00
Total 2440 Nursing Services				\$784,619.71

LEA : 124158503 Unionville-Chadds Ford SD

Printed 1/6/2022 12:01:05 PM

General Fund (10)

2500 Support Services – Business	<u>Elementary</u>	<u>Secondary</u>	<u>Federal</u>	<u>Total</u>
100 <u>Personnel Services – Salaries</u>				
100 Personnel Services – Salaries				567,819.18
Total Personnel Services – Salaries				\$567,819.18
200 <u>Personnel Services – Employee Benefits</u>				
220 Social Security Contributions				44,457.18
230 PSERS Retirement Contributions				217,085.65
250 Unemployment Compensation				1,232.82
260 Workers' Compensation				3,750.88
270 Group Insurance – Self-Insurance				69,229.97
Total Personnel Services – Employee Benefits				\$335,756.50
300 <u>Purchased Professional and Technical Services</u>				
329 Professional Educational Services – Other				65,855.48
Total Purchased Professional and Technical Services				\$65,855.48
400 <u>Purchased Property Services</u>				
430 Repairs and Maintenance Services				59,333.73
Total Purchased Property Services				\$59,333.73
500 <u>Other Purchased Services</u>				
530 Communications				15,480.12
580 Travel				751.07
591 Services Purchased Locally				22,305.26
Total Other Purchased Services				\$38,536.45
600 <u>Supplies</u>				
610 General Supplies				37,497.13
640 Books and Periodicals				1,345.88
Total Supplies				\$38,843.01
800 <u>Other Objects</u>				
810 Dues and Fees				2,036.80
Total Other Objects				\$2,036.80
Total 2500 Support Services – Business				\$1,108,181.15

LEA : 124158503 Unionville-Chadds Ford SD

Printed 1/6/2022 12:01:05 PM

General Fund (10)				
2510 Fiscal Services	<u>Elementary</u>	<u>Secondary</u>	<u>Federal</u>	<u>Total</u>
100 <u>Personnel Services – Salaries</u>				
100 Personnel Services – Salaries				567,819.18
Total Personnel Services – Salaries				\$567,819.18
200 <u>Personnel Services – Employee Benefits</u>				
220 Social Security Contributions				44,457.18
230 PSERS Retirement Contributions				217,085.65
250 Unemployment Compensation				1,232.82
260 Workers' Compensation				3,750.88
270 Group Insurance – Self-Insurance				69,229.97
Total Personnel Services – Employee Benefits				\$335,756.50
300 <u>Purchased Professional and Technical Services</u>				
329 Professional Educational Services – Other				65,855.48
Total Purchased Professional and Technical Services				\$65,855.48
400 <u>Purchased Property Services</u>				
430 Repairs and Maintenance Services				59,333.73
Total Purchased Property Services				\$59,333.73
500 <u>Other Purchased Services</u>				
530 Communications				15,480.12
580 Travel				751.07
Total Other Purchased Services				\$16,231.19
600 <u>Supplies</u>				
610 General Supplies				37,497.13
640 Books and Periodicals				1,345.88
Total Supplies				\$38,843.01
800 <u>Other Objects</u>				
810 Dues and Fees				2,036.80
Total Other Objects				\$2,036.80
Total 2510 Fiscal Services				\$1,085,875.89

LEA : 124158503 Unionville-Chadds Ford SD

Printed 1/6/2022 12:01:05 PM

General Fund (10)

2511 Supervision of Fiscal Services - Head of Component	<u>Elementary</u>	<u>Secondary</u>	<u>Federal</u>	<u>Total</u>
100 <u>Personnel Services – Salaries</u>				
100 Personnel Services – Salaries				343,938.84
Total Personnel Services – Salaries				\$343,938.84
200 <u>Personnel Services – Employee Benefits</u>				
220 Social Security Contributions				26,928.56
230 PSERS Retirement Contributions				139,824.54
250 Unemployment Compensation				746.74
260 Workers' Compensation				2,271.98
270 Group Insurance – Self-Insurance				41,933.90
Total Personnel Services – Employee Benefits				\$211,705.72
300 <u>Purchased Professional and Technical Services</u>				
329 Professional Educational Services – Other				16,612.00
Total Purchased Professional and Technical Services				\$16,612.00
400 <u>Purchased Property Services</u>				
430 Repairs and Maintenance Services				59,333.73
Total Purchased Property Services				\$59,333.73
500 <u>Other Purchased Services</u>				
530 Communications				15,480.12
580 Travel				314.15
Total Other Purchased Services				\$15,794.27
600 <u>Supplies</u>				
610 General Supplies				9,374.28
640 Books and Periodicals				1,345.88
Total Supplies				\$10,720.16
800 <u>Other Objects</u>				
810 Dues and Fees				509.20
Total Other Objects				\$509.20
Total 2511 Supervision of Fiscal Services - Head of Component				\$658,613.92

LEA : 124158503 Unionville-Chadds Ford SD

Printed 1/6/2022 12:01:05 PM

General Fund (10)

2513 Receiving and Disbursing Funds Services	<u>Elementary</u>	<u>Secondary</u>	<u>Federal</u>	<u>Total</u>
100 <u>Personnel Services – Salaries</u>				
100 Personnel Services – Salaries				91,363.54
Total Personnel Services – Salaries				\$91,363.54
200 <u>Personnel Services – Employee Benefits</u>				
220 Social Security Contributions				7,153.27
230 PSERS Retirement Contributions				31,529.56
250 Unemployment Compensation				198.36
260 Workers' Compensation				603.53
270 Group Insurance – Self-Insurance				11,139.28
Total Personnel Services – Employee Benefits				\$50,624.00
300 <u>Purchased Professional and Technical Services</u>				
329 Professional Educational Services – Other				(1,450.94)
Total Purchased Professional and Technical Services				(\$1,450.94)
500 <u>Other Purchased Services</u>				
580 Travel				436.92
Total Other Purchased Services				\$436.92
600 <u>Supplies</u>				
610 General Supplies				9,374.28
Total Supplies				\$9,374.28
800 <u>Other Objects</u>				
810 Dues and Fees				509.20
Total Other Objects				\$509.20
Total 2513 Receiving and Disbursing Funds Services				\$150,857.00

LEA : 124158503 Unionville-Chadds Ford SD

Printed 1/6/2022 12:01:05 PM

General Fund (10)

2514 Payroll Services

	<u>Elementary</u>	<u>Secondary</u>	<u>Federal</u>	<u>Total</u>
100 <u>Personnel Services – Salaries</u>				
100 Personnel Services – Salaries				57,512.00
Total Personnel Services – Salaries				\$57,512.00
200 <u>Personnel Services – Employee Benefits</u>				
220 Social Security Contributions				4,502.88
230 PSERS Retirement Contributions				19,847.39
250 Unemployment Compensation				124.87
260 Workers' Compensation				379.91
270 Group Insurance – Self-Insurance				7,012.01
Total Personnel Services – Employee Benefits				\$31,867.06
300 <u>Purchased Professional and Technical Services</u>				
329 Professional Educational Services – Other				30,194.42
Total Purchased Professional and Technical Services				\$30,194.42
600 <u>Supplies</u>				
610 General Supplies				9,374.28
Total Supplies				\$9,374.28
800 <u>Other Objects</u>				
810 Dues and Fees				509.20
Total Other Objects				\$509.20
Total 2514 Payroll Services				\$129,456.96

LEA : 124158503 Unionville-Chadds Ford SD

Printed 1/6/2022 12:01:05 PM

General Fund (10)

2515 Financial Accounting Services	<u>Elementary</u>	<u>Secondary</u>	<u>Federal</u>	<u>Total</u>
100 <u>Personnel Services – Salaries</u>				
100 Personnel Services – Salaries				75,004.80
Total Personnel Services – Salaries				\$75,004.80
200 <u>Personnel Services – Employee Benefits</u>				
220 Social Security Contributions				5,872.47
230 PSERS Retirement Contributions				25,884.16
250 Unemployment Compensation				162.85
260 Workers' Compensation				495.46
270 Group Insurance – Self-Insurance				9,144.78
Total Personnel Services – Employee Benefits				\$41,559.72
300 <u>Purchased Professional and Technical Services</u>				
329 Professional Educational Services – Other				20,500.00
Total Purchased Professional and Technical Services				\$20,500.00
600 <u>Supplies</u>				
610 General Supplies				9,374.29
Total Supplies				\$9,374.29
800 <u>Other Objects</u>				
810 Dues and Fees				509.20
Total Other Objects				\$509.20
Total 2515 Financial Accounting Services				\$146,948.01

LEA : 124158503 Unionville-Chadds Ford SD

Printed 1/6/2022 12:01:05 PM

General Fund (10)

2590 Other Support Services – Business	<u>Elementary</u>	<u>Secondary</u>	<u>Federal</u>	<u>Total</u>
500 <u>Other Purchased Services</u>				
591 Services Purchased Locally				22,305.26
Total Other Purchased Services				\$22,305.26
Total 2590 Other Support Services – Business				\$22,305.26

LEA : 124158503 Unionville-Chadds Ford SD

Printed 1/6/2022 12:01:05 PM

General Fund (10)

2600 Operation and Maintenance of Plant Services	Elementary	Secondary	Federal	Total
100 <u>Personnel Services – Salaries</u>				
100 Personnel Services – Salaries				2,681,324.36
Total Personnel Services – Salaries				\$2,681,324.36
200 <u>Personnel Services – Employee Benefits</u>				
220 Social Security Contributions				188,559.81
230 PSERS Retirement Contributions				891,999.39
250 Unemployment Compensation				9,862.84
260 Workers' Compensation				17,042.59
270 Group Insurance – Self-Insurance				661,034.37
Total Personnel Services – Employee Benefits				\$1,768,499.00
300 <u>Purchased Professional and Technical Services</u>				
329 Professional Educational Services – Other				34,811.44
330 Other Professional Services				9,126.56
340 Technical Services				19,128.00
350 Security / Safety Services				4,019.65
Total Purchased Professional and Technical Services				\$67,085.65
400 <u>Purchased Property Services</u>				
410 Cleaning Services				36,255.99
420 Utility Services				107,104.71
430 Repairs and Maintenance Services				245,325.41
Total Purchased Property Services				\$388,686.11
500 <u>Other Purchased Services</u>				
521 Fire Insurance				144,048.00
523 General Property and Liability Insurance				113,931.00
529 Other Insurance				134,460.00
530 Communications				3,567.45
580 Travel				3,768.90
Total Other Purchased Services				\$399,775.35
600 <u>Supplies</u>				
610 General Supplies	372,720.98	372,720.99	231,372.00	976,813.97
620 Energy				1,080,431.67
630 Food				(10.55)
Total Supplies	\$372,720.98	\$372,720.99	\$231,372.00	\$2,057,235.09
700 <u>Property</u>				
752 Capital Equipment – Original and Additional				3,879.81
762 Capitalized Equipment - Replacement				22,420.23
Total Property				\$26,300.04
Total 2600 Operation and Maintenance of Plant Services	\$372,720.98	\$372,720.99	\$231,372.00	\$7,388,905.60

LEA : 124158503 Unionville-Chadds Ford SD

Printed 1/6/2022 12:01:05 PM

General Fund (10)

2610 Supervision of Operation and Maintenance of Plant Services	<u>Elementary</u>	<u>Secondary</u>	<u>Federal</u>	<u>Total</u>
100 <u>Personnel Services – Salaries</u>				
100 Personnel Services – Salaries				191,150.40
Total Personnel Services – Salaries				\$191,150.40
200 <u>Personnel Services – Employee Benefits</u>				
220 Social Security Contributions				13,442.34
230 PSERS Retirement Contributions				63,590.23
250 Unemployment Compensation				703.12
260 Workers' Compensation				1,214.96
270 Group Insurance – Self-Insurance				47,124.84
Total Personnel Services – Employee Benefits				\$126,075.49
300 <u>Purchased Professional and Technical Services</u>				
330 Other Professional Services				9,126.56
Total Purchased Professional and Technical Services				\$9,126.56
500 <u>Other Purchased Services</u>				
530 Communications				3,567.45
580 Travel				803.54
Total Other Purchased Services				\$4,370.99
600 <u>Supplies</u>				
630 Food				(10.55)
Total Supplies				(\$10.55)
Total 2610 Supervision of Operation and Maintenance of Plant Services				\$330,712.89

LEA : 124158503 Unionville-Chadds Ford SD

Printed 1/6/2022 12:01:05 PM

General Fund (10)

2611 Supervision of Operation and Maintenance of Plant Services – Head of Component	<u>Elementary</u>	<u>Secondary</u>	<u>Federal</u>	<u>Total</u>
100 <u>Personnel Services – Salaries</u>				
100 Personnel Services – Salaries				191,150.40
Total Personnel Services – Salaries				\$191,150.40
200 <u>Personnel Services – Employee Benefits</u>				
220 Social Security Contributions				13,442.34
230 PSERS Retirement Contributions				63,590.23
250 Unemployment Compensation				703.12
260 Workers' Compensation				1,214.96
270 Group Insurance – Self-Insurance				47,124.84
Total Personnel Services – Employee Benefits				\$126,075.49
300 <u>Purchased Professional and Technical Services</u>				
330 Other Professional Services				9,126.56
Total Purchased Professional and Technical Services				\$9,126.56
500 <u>Other Purchased Services</u>				
530 Communications				3,567.45
580 Travel				803.54
Total Other Purchased Services				\$4,370.99
600 <u>Supplies</u>				
630 Food				(10.55)
Total Supplies				(\$10.55)
Total 2611 Supervision of Operation and Maintenance of Plant Services – Head of Component				\$330,712.89

LEA : 124158503 Unionville-Chadds Ford SD

Printed 1/6/2022 12:01:05 PM

General Fund (10)

2620 Operation of Buildings Services	Elementary	Secondary	Federal	Total
100 <u>Personnel Services – Salaries</u>				
100 Personnel Services – Salaries				2,248,370.74
Total Personnel Services – Salaries				\$2,248,370.74
200 <u>Personnel Services – Employee Benefits</u>				
220 Social Security Contributions				158,113.05
230 PSERS Retirement Contributions				747,968.19
250 Unemployment Compensation				8,270.28
260 Workers' Compensation				14,290.72
270 Group Insurance – Self-Insurance				554,297.11
Total Personnel Services – Employee Benefits				\$1,482,939.35
300 <u>Purchased Professional and Technical Services</u>				
329 Professional Educational Services – Other				34,811.44
340 Technical Services				19,128.00
Total Purchased Professional and Technical Services				\$53,939.44
400 <u>Purchased Property Services</u>				
410 Cleaning Services				36,255.99
420 Utility Services				107,104.71
430 Repairs and Maintenance Services				245,325.41
Total Purchased Property Services				\$388,686.11
500 <u>Other Purchased Services</u>				
521 Fire Insurance				144,048.00
523 General Property and Liability Insurance				113,931.00
529 Other Insurance				134,460.00
580 Travel				2,965.36
Total Other Purchased Services				\$395,404.36
600 <u>Supplies</u>				
610 General Supplies	327,025.55	327,025.56	231,372.00	885,423.11
620 Energy				1,080,431.67
Total Supplies	\$327,025.55	\$327,025.56	\$231,372.00	\$1,965,854.78
700 <u>Property</u>				
752 Capital Equipment – Original and Additional				3,879.81
762 Capitalized Equipment - Replacement				20,312.28
Total Property				\$24,192.09
Total 2620 Operation of Buildings Services	\$327,025.55	\$327,025.56	\$231,372.00	\$6,559,386.87

LEA : 124158503 Unionville-Chadds Ford SD

Printed 1/6/2022 12:01:05 PM

General Fund (10)

2630 Care and Upkeep of Grounds Services	<u>Elementary</u>	<u>Secondary</u>	<u>Federal</u>	<u>Total</u>
100 <u>Personnel Services – Salaries</u>				
100 Personnel Services – Salaries				241,803.22
Total Personnel Services – Salaries				\$241,803.22
200 <u>Personnel Services – Employee Benefits</u>				
220 Social Security Contributions				17,004.42
230 PSERS Retirement Contributions				80,440.97
250 Unemployment Compensation				889.44
260 Workers' Compensation				1,536.91
270 Group Insurance – Self-Insurance				59,612.42
Total Personnel Services – Employee Benefits				\$159,484.16
600 <u>Supplies</u>				
610 General Supplies	37,954.86	37,954.86		75,909.72
Total Supplies	\$37,954.86	\$37,954.86		\$75,909.72
700 <u>Property</u>				
762 Capitalized Equipment - Replacement				2,107.95
Total Property				\$2,107.95
Total 2630 Care and Upkeep of Grounds Services	\$37,954.86	\$37,954.86		\$479,305.05

LEA : 124158503 Unionville-Chadds Ford SD

Printed 1/6/2022 12:01:05 PM

General Fund (10)

2660 Safety and Security Services	<u>Elementary</u>	<u>Secondary</u>	<u>Federal</u>	<u>Total</u>
300 <u>Purchased Professional and Technical Services</u>				
350 Security / Safety Services				4,019.65
Total Purchased Professional and Technical Services				\$4,019.65
600 <u>Supplies</u>				
610 General Supplies	7,740.57	7,740.57		15,481.14
Total Supplies	\$7,740.57	\$7,740.57		\$15,481.14
Total 2660 Safety and Security Services	\$7,740.57	\$7,740.57		\$19,500.79

LEA : 124158503 Unionville-Chadds Ford SD

Printed 1/6/2022 12:01:05 PM

General Fund (10)

2700 Student Transportation Services		<u>Elementary</u>	<u>Secondary</u>	<u>Federal</u>	<u>Total</u>
100	<u>Personnel Services – Salaries</u>				
100	Personnel Services – Salaries			57,600.00	1,751,891.63
Total Personnel Services – Salaries				\$57,600.00	\$1,751,891.63
200	<u>Personnel Services – Employee Benefits</u>				
220	Social Security Contributions				141,036.61
230	PSERS Retirement Contributions				658,214.85
250	Unemployment Compensation				10,567.20
260	Workers' Compensation				12,058.20
270	Group Insurance – Self-Insurance				701,976.81
Total Personnel Services – Employee Benefits					\$1,523,853.67
300	<u>Purchased Professional and Technical Services</u>				
330	Other Professional Services				32,218.79
340	Technical Services				2,086.00
Total Purchased Professional and Technical Services					\$34,304.79
400	<u>Purchased Property Services</u>				
430	Repairs and Maintenance Services				8,261.80
440	Rentals				5,652.34
Total Purchased Property Services					\$13,914.14
500	<u>Other Purchased Services</u>				
516	Student Transportation Services From the IU				6,755.70
522	Automotive Liability Insurance				112,225.00
530	Communications				8,420.75
Total Other Purchased Services					\$127,401.45
600	<u>Supplies</u>				
610	General Supplies				127,061.35
620	Energy				166,248.58
Total Supplies					\$293,309.93
700	<u>Property</u>				
762	Capitalized Equipment - Replacement				549,471.99
Total Property					\$549,471.99
Total 2700 Student Transportation Services				\$57,600.00	\$4,294,147.60

LEA : 124158503 Unionville-Chadds Ford SD

Printed 1/6/2022 12:01:05 PM

General Fund (10)

2710 Supervision of Student Transportation Services	<u>Elementary</u>	<u>Secondary</u>	<u>Federal</u>	<u>Total</u>
100 <u>Personnel Services – Salaries</u>				
100 Personnel Services – Salaries				122,632.41
Total Personnel Services – Salaries				\$122,632.41
200 <u>Personnel Services – Employee Benefits</u>				
220 Social Security Contributions				9,872.56
230 PSERS Retirement Contributions				46,075.04
250 Unemployment Compensation				739.70
260 Workers' Compensation				844.08
270 Group Insurance – Self-Insurance				49,138.38
Total Personnel Services – Employee Benefits				\$106,669.76
500 <u>Other Purchased Services</u>				
522 Automotive Liability Insurance				112,225.00
530 Communications				8,420.75
Total Other Purchased Services				\$120,645.75
Total 2710 Supervision of Student Transportation Services				\$349,947.92

General Fund (10)

2711 Supervision of Student Transportation Services – Head of Component	<u>Elementary</u>	<u>Secondary</u>	<u>Federal</u>	<u>Total</u>
100 <u>Personnel Services – Salaries</u>				
100 Personnel Services – Salaries				122,632.41
Total Personnel Services – Salaries				\$122,632.41
200 <u>Personnel Services – Employee Benefits</u>				
220 Social Security Contributions				9,872.56
230 PSERS Retirement Contributions				46,075.04
250 Unemployment Compensation				739.70
260 Workers' Compensation				844.08
270 Group Insurance – Self-Insurance				49,138.38
Total Personnel Services – Employee Benefits				\$106,669.76
500 <u>Other Purchased Services</u>				
522 Automotive Liability Insurance				112,225.00
530 Communications				8,420.75
Total Other Purchased Services				\$120,645.75
Total 2711 Supervision of Student Transportation Services – Head of Component				\$349,947.92

LEA : 124158503 Unionville-Chadds Ford SD

Printed 1/6/2022 12:01:05 PM

General Fund (10)				
2720 Vehicle Operation Services	<u>Elementary</u>	<u>Secondary</u>	<u>Federal</u>	<u>Total</u>
100 <u>Personnel Services – Salaries</u>				
100 Personnel Services – Salaries			57,600.00	998,578.23
Total Personnel Services – Salaries			\$57,600.00	\$998,578.23
200 <u>Personnel Services – Employee Benefits</u>				
220 Social Security Contributions				80,390.87
230 PSERS Retirement Contributions				375,182.46
250 Unemployment Compensation				6,023.31
260 Workers' Compensation				6,873.17
270 Group Insurance – Self-Insurance				400,126.78
Total Personnel Services – Employee Benefits				\$868,596.59
300 <u>Purchased Professional and Technical Services</u>				
330 Other Professional Services				32,218.79
340 Technical Services				2,086.00
Total Purchased Professional and Technical Services				\$34,304.79
500 <u>Other Purchased Services</u>				
516 Student Transportation Services From the IU				6,755.70
Total Other Purchased Services				\$6,755.70
Total 2720 Vehicle Operation Services			\$57,600.00	\$1,908,235.31

LEA : 124158503 Unionville-Chadds Ford SD

Printed 1/6/2022 12:01:05 PM

General Fund (10)

2730 Monitoring Services

	<u>Elementary</u>	<u>Secondary</u>	<u>Federal</u>	<u>Total</u>
100 <u>Personnel Services – Salaries</u>				
100 Personnel Services – Salaries				35,037.83
Total Personnel Services – Salaries				\$35,037.83
200 <u>Personnel Services – Employee Benefits</u>				
220 Social Security Contributions				2,820.73
230 PSERS Retirement Contributions				13,164.30
250 Unemployment Compensation				211.34
260 Workers' Compensation				241.16
270 Group Insurance – Self-Insurance				14,039.54
Total Personnel Services – Employee Benefits				\$30,477.07
Total 2730 Monitoring Services				\$65,514.90

LEA : 124158503 Unionville-Chadds Ford SD

Printed 1/6/2022 12:01:05 PM

General Fund (10)

2740 Vehicle Servicing and Maintenance Services

Elementary Secondary Federal Total

100 <u>Personnel Services – Salaries</u>				
100 Personnel Services – Salaries				140,151.33
Total Personnel Services – Salaries				\$140,151.33
200 <u>Personnel Services – Employee Benefits</u>				
220 Social Security Contributions				11,282.93
230 PSERS Retirement Contributions				52,657.19
250 Unemployment Compensation				845.38
260 Workers' Compensation				964.66
270 Group Insurance – Self-Insurance				56,158.14
Total Personnel Services – Employee Benefits				\$121,908.30
400 <u>Purchased Property Services</u>				
430 Repairs and Maintenance Services				8,261.80
440 Rentals				5,652.34
Total Purchased Property Services				\$13,914.14
600 <u>Supplies</u>				
610 General Supplies				127,061.35
620 Energy				166,248.58
Total Supplies				\$293,309.93
700 <u>Property</u>				
762 Capitalized Equipment - Replacement				549,471.99
Total Property				\$549,471.99
Total 2740 Vehicle Servicing and Maintenance Services				\$1,118,755.69

LEA : 124158503 Unionville-Chadds Ford SD

Printed 1/6/2022 12:01:05 PM

General Fund (10)

2750 Nonpublic Transportation	<u>Elementary</u>	<u>Secondary</u>	<u>Federal</u>	<u>Total</u>
100 <u>Personnel Services – Salaries</u>				
100 Personnel Services – Salaries				455,491.83
Total Personnel Services – Salaries				\$455,491.83
200 <u>Personnel Services – Employee Benefits</u>				
220 Social Security Contributions				36,669.52
230 PSERS Retirement Contributions				171,135.86
250 Unemployment Compensation				2,747.47
260 Workers' Compensation				3,135.13
270 Group Insurance – Self-Insurance				182,513.97
Total Personnel Services – Employee Benefits				\$396,201.95
Total 2750 Nonpublic Transportation				\$851,693.78

LEA : 124158503 Unionville-Chadds Ford SD

Printed 1/6/2022 12:01:05 PM

General Fund (10)				
2800 Support Services – Central	<u>Elementary</u>	<u>Secondary</u>	<u>Federal</u>	<u>Total</u>
100 <u>Personnel Services – Salaries</u>				
100 Personnel Services – Salaries				611,664.34
Total Personnel Services – Salaries				\$611,664.34
200 <u>Personnel Services – Employee Benefits</u>				
220 Social Security Contributions				48,136.41
230 PSERS Retirement Contributions				221,260.38
240 Tuition Reimbursement				45,453.04
250 Unemployment Compensation				1,585.09
260 Workers' Compensation				2,467.02
270 Group Insurance – Self-Insurance				81,140.48
Total Personnel Services – Employee Benefits				\$400,042.42
300 <u>Purchased Professional and Technical Services</u>				
330 Other Professional Services				26,377.00
Total Purchased Professional and Technical Services				\$26,377.00
500 <u>Other Purchased Services</u>				
550 Printing and Binding				8,532.59
580 Travel				1,200.42
Total Other Purchased Services				\$9,733.01
600 <u>Supplies</u>				
610 General Supplies				657.87
Total Supplies				\$657.87
700 <u>Property</u>				
752 Capital Equipment – Original and Additional				1,541.93
762 Capitalized Equipment - Replacement				899.00
Total Property				\$2,440.93
800 <u>Other Objects</u>				
810 Dues and Fees				2,414.84
Total Other Objects				\$2,414.84
Total 2800 Support Services – Central				\$1,053,330.41

LEA : 124158503 Unionville-Chadds Ford SD

Printed 1/6/2022 12:01:05 PM

General Fund (10)

2810 Planning, Research, Development and Evaluation Services	<u>Elementary</u>	<u>Secondary</u>	<u>Federal</u>	<u>Total</u>
100 <u>Personnel Services – Salaries</u>				
100 Personnel Services – Salaries				466,324.34
Total Personnel Services – Salaries				\$466,324.34
200 <u>Personnel Services – Employee Benefits</u>				
220 Social Security Contributions				37,405.36
230 PSERS Retirement Contributions				187,862.59
250 Unemployment Compensation				1,585.09
260 Workers' Compensation				2,467.02
270 Group Insurance – Self-Insurance				81,140.48
Total Personnel Services – Employee Benefits				\$310,460.54
Total 2810 Planning, Research, Development and Evaluation Services				\$776,784.88

LEA : 124158503 Unionville-Chadds Ford SD

Printed 1/6/2022 12:01:05 PM

General Fund (10)				
2820 Information Services	<u>Elementary</u>	<u>Secondary</u>	<u>Federal</u>	<u>Total</u>
100 <u>Personnel Services – Salaries</u>				
100 Personnel Services – Salaries				145,340.00
Total Personnel Services – Salaries				\$145,340.00
200 <u>Personnel Services – Employee Benefits</u>				
220 Social Security Contributions				10,731.05
230 PSERS Retirement Contributions				33,397.79
Total Personnel Services – Employee Benefits				\$44,128.84
300 <u>Purchased Professional and Technical Services</u>				
330 Other Professional Services				26,377.00
Total Purchased Professional and Technical Services				\$26,377.00
500 <u>Other Purchased Services</u>				
550 Printing and Binding				8,532.59
580 Travel				1,200.42
Total Other Purchased Services				\$9,733.01
600 <u>Supplies</u>				
610 General Supplies				657.87
Total Supplies				\$657.87
700 <u>Property</u>				
752 Capital Equipment – Original and Additional				1,541.93
762 Capitalized Equipment - Replacement				899.00
Total Property				\$2,440.93
800 <u>Other Objects</u>				
810 Dues and Fees				2,414.84
Total Other Objects				\$2,414.84
Total 2820 Information Services				\$231,092.49

LEA : 124158503 Unionville-Chadds Ford SD

Printed 1/6/2022 12:01:05 PM

General Fund (10)				
2823 Public Information Services	<u>Elementary</u>	<u>Secondary</u>	<u>Federal</u>	<u>Total</u>
100 <u>Personnel Services – Salaries</u>				
100 Personnel Services – Salaries				145,340.00
Total Personnel Services – Salaries				\$145,340.00
200 <u>Personnel Services – Employee Benefits</u>				
220 Social Security Contributions				10,731.05
230 PSERS Retirement Contributions				33,397.79
Total Personnel Services – Employee Benefits				\$44,128.84
300 <u>Purchased Professional and Technical Services</u>				
330 Other Professional Services				26,377.00
Total Purchased Professional and Technical Services				\$26,377.00
500 <u>Other Purchased Services</u>				
550 Printing and Binding				8,532.59
580 Travel				1,200.42
Total Other Purchased Services				\$9,733.01
600 <u>Supplies</u>				
610 General Supplies				657.87
Total Supplies				\$657.87
700 <u>Property</u>				
752 Capital Equipment – Original and Additional				1,541.93
762 Capitalized Equipment - Replacement				899.00
Total Property				\$2,440.93
800 <u>Other Objects</u>				
810 Dues and Fees				2,414.84
Total Other Objects				\$2,414.84
Total 2823 Public Information Services				\$231,092.49

LEA : 124158503 Unionville-Chadds Ford SD

Printed 1/6/2022 12:01:05 PM

General Fund (10)

2830 Staff Services

<u>Elementary</u>	<u>Secondary</u>	<u>Federal</u>	<u>Total</u>
-------------------	------------------	----------------	--------------

200 Personnel Services – Employee Benefits

240 Tuition Reimbursement			45,453.04
---------------------------	--	--	-----------

Total Personnel Services – Employee Benefits			\$45,453.04
---	--	--	--------------------

Total 2830 Staff Services			\$45,453.04
----------------------------------	--	--	--------------------

LEA : 124158503 Unionville-Chadds Ford SD

Printed 1/6/2022 12:01:05 PM

General Fund (10)

2834 Staff Development Services – Non-Instructional, Certified Staff Only	<u>Elementary</u>	<u>Secondary</u>	<u>Federal</u>	<u>Total</u>
200 <u>Personnel Services – Employee Benefits</u>				
240 Tuition Reimbursement				45,453.04
Total Personnel Services – Employee Benefits				\$45,453.04
Total 2834 Staff Development Services – Non-Instructional, Certified Staff Only				\$45,453.04

LEA : 124158503 Unionville-Chadds Ford SD

Printed 1/6/2022 12:01:05 PM

General Fund (10)

2900 Other Support Services	<u>Elementary</u>	<u>Secondary</u>	<u>Federal</u>	<u>Total</u>
500 <u>Other Purchased Services</u>				
595 IU Payments By Withholding				40,968.17
Total Other Purchased Services				\$40,968.17
Total 2900 Other Support Services				\$40,968.17

Page 113

LEA : 124158503 Unionville-Chadds Ford SD

Printed 1/6/2022 12:01:09 PM

General Fund (10)

3000 Operation of Non-Instructional Services		<u>Total</u>
100 <u>Personnel Services – Salaries</u>		
100 Personnel Services – Salaries	938,351.56	
Total Personnel Services – Salaries	\$938,351.56	
200 <u>Personnel Services – Employee Benefits</u>		
220 Social Security Contributions	73,277.71	
230 PSERS Retirement Contributions	363,200.99	
250 Unemployment Compensation	528.42	
260 Workers' Compensation	5,966.16	
270 Group Insurance – Self-Insurance	27,543.10	
Total Personnel Services – Employee Benefits	\$470,516.38	
300 <u>Purchased Professional and Technical Services</u>		
329 Professional Educational Services – Other	20,000.00	
330 Other Professional Services	37,374.58	
Total Purchased Professional and Technical Services	\$57,374.58	
400 <u>Purchased Property Services</u>		
430 Repairs and Maintenance Services	16,486.45	
Total Purchased Property Services	\$16,486.45	
500 <u>Other Purchased Services</u>		
520 Insurance – General	12,400.00	
580 Travel	13,055.50	
Total Other Purchased Services	\$25,455.50	
600 <u>Supplies</u>		
610 General Supplies	113,919.31	
Total Supplies	\$113,919.31	
700 <u>Property</u>		
752 Capital Equipment – Original and Additional	32,837.69	
Total Property	\$32,837.69	
800 <u>Other Objects</u>		
810 Dues and Fees	9,822.00	
Total Other Objects	\$9,822.00	
Total 3000 Operation of Non-Instructional Services	\$1,664,763.47	

LEA : 124158503 Unionville-Chadds Ford SD

Printed 1/6/2022 12:01:09 PM

General Fund (10)				
3200 Student Activities				
	<u>Elementary</u>	<u>Secondary</u>	<u>Federal</u>	<u>Total</u>
100 <u>Personnel Services – Salaries</u>				
100 Personnel Services – Salaries				929,916.60
Total Personnel Services – Salaries				\$929,916.60
200 <u>Personnel Services – Employee Benefits</u>				
220 Social Security Contributions				72,357.92
230 PSERS Retirement Contributions				357,634.70
250 Unemployment Compensation				528.42
260 Workers' Compensation				5,865.47
270 Group Insurance – Self-Insurance				27,543.10
Total Personnel Services – Employee Benefits				\$463,929.61
300 <u>Purchased Professional and Technical Services</u>				
329 Professional Educational Services – Other				20,000.00
330 Other Professional Services				37,374.58
Total Purchased Professional and Technical Services				\$57,374.58
400 <u>Purchased Property Services</u>				
430 Repairs and Maintenance Services				16,486.45
Total Purchased Property Services				\$16,486.45
500 <u>Other Purchased Services</u>				
520 Insurance – General				12,400.00
580 Travel				13,055.50
Total Other Purchased Services				\$25,455.50
600 <u>Supplies</u>				
610 General Supplies				113,919.31
Total Supplies				\$113,919.31
700 <u>Property</u>				
752 Capital Equipment – Original and Additional				32,837.69
Total Property				\$32,837.69
800 <u>Other Objects</u>				
810 Dues and Fees				9,822.00
Total Other Objects				\$9,822.00
Total 3200 Student Activities				\$1,649,741.74

LEA : 124158503 Unionville-Chadds Ford SD

Printed 1/6/2022 12:01:09 PM

General Fund (10)

3300 Community Services

Elementary Secondary Federal Total

100 <u>Personnel Services – Salaries</u>				
100 Personnel Services – Salaries				8,434.96
Total Personnel Services – Salaries				\$8,434.96
200 <u>Personnel Services – Employee Benefits</u>				
220 Social Security Contributions				919.79
230 PSERS Retirement Contributions				5,566.29
260 Workers’ Compensation				100.69
Total Personnel Services – Employee Benefits				\$6,586.77
Total 3300 Community Services				\$15,021.73

General Fund (10)

5000 Other Expenditures and Financing Uses

Total

800	<u>Other Objects</u>	
830	Interest	3,112,325.00
880	Refunds of Prior Years' Receipts	6,669.03
Total Other Objects		\$3,118,994.03
900	<u>Other Uses of Funds</u>	
910	Redemption of Principal	5,370,000.00
932	Capital Reserve Fund Transfers Applicable To Fund 32	1,008,560.33
Total Other Uses of Funds		\$6,378,560.33
Total 5000 Other Expenditures and Financing Uses		\$9,497,554.36

LEA : 124158503 Unionville-Chadds Ford SD

Printed 1/6/2022 12:01:20 PM

General Fund (10)

5100 Debt Service / Other Expenditures and Financing Uses	<u>Elementary</u>	<u>Secondary</u>	<u>Federal</u>	<u>Total</u>
800 <u>Other Objects</u>				
830 Interest				3,112,325.00
880 Refunds of Prior Years' Receipts				6,669.03
Total Other Objects				\$3,118,994.03
900 <u>Other Uses of Funds</u>				
910 Redemption of Principal				5,370,000.00
Total Other Uses of Funds				\$5,370,000.00
Total 5100 Debt Service / Other Expenditures and Financing Uses				\$8,488,994.03

LEA : 124158503 Unionville-Chadds Ford SD

Printed 1/6/2022 12:01:20 PM

General Fund (10)

5110 Debt Service	<u>Elementary</u>	<u>Secondary</u>	<u>Federal</u>	<u>Total</u>
800 <u>Other Objects</u>				
830 Interest				3,112,325.00
Total Other Objects				\$3,112,325.00
900 <u>Other Uses of Funds</u>				
910 Redemption of Principal				5,370,000.00
Total Other Uses of Funds				\$5,370,000.00
Total 5110 Debt Service				\$8,482,325.00

LEA : 124158503 Unionville-Chadds Ford SD

Printed 1/6/2022 12:01:20 PM

General Fund (10)

5130 Refund of Prior Year Revenues / Receipts	<u>Elementary</u>	<u>Secondary</u>	<u>Federal</u>	<u>Total</u>
800 <u>Other Objects</u>				
880 Refunds of Prior Years' Receipts				6,669.03
Total Other Objects				\$6,669.03
Total 5130 Refund of Prior Year Revenues / Receipts				\$6,669.03

LEA : 124158503 Unionville-Chadds Ford SD

Printed 1/6/2022 12:01:20 PM

General Fund (10)

5200 Interfund Transfers – Out	<u>Elementary</u>	<u>Secondary</u>	<u>Federal</u>	<u>Total</u>
900 <u>Other Uses of Funds</u>				
932 Capital Reserve Fund Transfers Applicable To Fund 32				1,008,560.33
Total Other Uses of Funds				\$1,008,560.33
Total 5200 Interfund Transfers – Out				\$1,008,560.33

LEA : 124158503 Unionville-Chadds Ford SD

Printed 1/6/2022 12:01:20 PM

General Fund (10)

5230 Capital Projects Fund Transfers	<u>Elementary</u>	<u>Secondary</u>	<u>Federal</u>	<u>Total</u>
900 <u>Other Uses of Funds</u>				
932 Capital Reserve Fund Transfers Applicable To Fund 32				1,008,560.33
Total Other Uses of Funds				\$1,008,560.33
Total 5230 Capital Projects Fund Transfers				\$1,008,560.33

LEA : 124158503 Unionville-Chadds Ford SD

Printed 1/6/2022 12:01:14 PM

Capital Reserve Fund - § 1431 (32)

4000 Facilities Acquisition, Construction and Improvement Services

Total

300 Purchased Professional and Technical Services

330 Other Professional Services	63,557.50
---------------------------------	-----------

Total Purchased Professional and Technical Services	\$63,557.50
--	--------------------

700 Property

762 Capitalized Equipment - Replacement	2,430,417.41
---	--------------

Total Property	\$2,430,417.41
-----------------------	-----------------------

Total 4000 Facilities Acquisition, Construction and Improvement Services	\$2,493,974.91
---	-----------------------

LEA : 124158503 Unionville-Chadds Ford SD

Printed 1/6/2022 12:01:14 PM

Capital Reserve Fund - § 1431 (32)

4600 Existing Building Improvement Services	<u>Elementary</u>	<u>Secondary</u>	<u>Federal</u>	<u>Total</u>
300 <u>Purchased Professional and Technical Services</u>				
330 Other Professional Services				63,557.50
Total Purchased Professional and Technical Services				\$63,557.50
700 <u>Property</u>				
762 Capitalized Equipment - Replacement				2,430,417.41
Total Property				\$2,430,417.41
Total 4600 Existing Building Improvement Services				\$2,493,974.91

LEA : 124158503 Unionville-Chadds Ford SD

Printed 1/6/2022 12:01:15 PM

Other Capital Projects Fund (39)

4000 Facilities Acquisition, Construction and Improvement Services

Total

300 Purchased Professional and Technical Services

330 Other Professional Services	26,366.12
---------------------------------	-----------

Total Purchased Professional and Technical Services	\$26,366.12
--	--------------------

700 Property

762 Capitalized Equipment - Replacement	2,453,822.32
---	--------------

Total Property	\$2,453,822.32
-----------------------	-----------------------

Total 4000 Facilities Acquisition, Construction and Improvement Services	\$2,480,188.44
---	-----------------------

LEA : 124158503 Unionville-Chadds Ford SD

Printed 1/6/2022 12:01:15 PM

Other Capital Projects Fund (39)

4600 Existing Building Improvement Services

<u>Elementary</u>	<u>Secondary</u>	<u>Federal</u>	<u>Total</u>
-------------------	------------------	----------------	--------------

300 Purchased Professional and Technical Services

330 Other Professional Services			26,366.12
---------------------------------	--	--	-----------

Total Purchased Professional and Technical Services			\$26,366.12
--	--	--	--------------------

700 Property

762 Capitalized Equipment - Replacement			2,453,822.32
---	--	--	--------------

Total Property			\$2,453,822.32
-----------------------	--	--	-----------------------

Total 4600 Existing Building Improvement Services			\$2,480,188.44
--	--	--	-----------------------

LEA : 124158503 Unionville-Chadds Ford SD

Printed 1/6/2022 12:01:22 PM

Other Capital Projects Fund (39)

5000 Other Expenditures and Financing Uses

Total

900 Other Uses of Funds

939 Other Fund Transfers

183,572.33

Total Other Uses of Funds

\$183,572.33

Total 5000 Other Expenditures and Financing Uses

\$183,572.33

LEA : 124158503 Unionville-Chadds Ford SD

Printed 1/6/2022 12:01:22 PM

Other Capital Projects Fund (39)

5200 Interfund Transfers – Out	<u>Elementary</u>	<u>Secondary</u>	<u>Federal</u>	<u>Total</u>
900 <u>Other Uses of Funds</u>				
939 Other Fund Transfers				183,572.33
Total Other Uses of Funds				\$183,572.33
Total 5200 Interfund Transfers – Out				\$183,572.33

LEA : 124158503 Unionville-Chadds Ford SD

Printed 1/6/2022 12:01:22 PM

Other Capital Projects Fund (39)

5220 Special Revenue Fund Transfers	<u>Elementary</u>	<u>Secondary</u>	<u>Federal</u>	<u>Total</u>
900 <u>Other Uses of Funds</u>				
939 Other Fund Transfers				183,572.33
Total Other Uses of Funds				\$183,572.33
Total 5220 Special Revenue Fund Transfers				\$183,572.33

LEA : 124158503 Unionville-Chadds Ford SD

Printed 1/6/2022 12:01:39 PM

	<u>General Fund(10)</u>	<u>Student Sponsored Activity Fund(21)</u>	<u>Public Purpose Trust(27)</u>	<u>Other Compt Approved (28)</u>	<u>Athletic / Activity(29)</u>
1000 <u>Instruction</u>					
1100 Regular Programs - Elementary / Secondary	35,937,461.31				
1200 Special Programs - Elementary / Secondary	14,760,091.63				
1300 Vocational Education	786,153.03				
1400 Other Instructional Programs - Elementary / Secondary	368,335.80				
Total Instruction	\$51,852,041.77				
2000 <u>Support Services</u>					
2100 Support Services - Students	4,047,405.19				
2200 Support Services - Instructional Staff	5,212,625.43				
2300 Support Services - Administration	4,073,721.60				
2400 Support Services - Pupil Health	784,619.71				
2500 Support Services - Business	1,108,181.15				
2600 Operation and Maintenance of Plant Services	7,388,905.60				
2700 Student Transportation Services	4,294,147.60				
2800 Support Services - Central	1,053,330.41				
2900 Other Support Services	40,968.17				
Total Support Services	\$28,003,904.86				
3000 <u>Operation of Non-Instructional Services</u>					
3200 Student Activities	1,649,741.74				
3300 Community Services	15,021.73				
Total Operation of Non-Instructional Services	\$1,664,763.47				
4000 <u>Facilities Acquisition, Construction and Improvement Services</u>					
4600 Existing Building Improvement Services					
Total Facilities Acquisition, Construction and Improvement Services					
5000 <u>Other Expenditures and Financing Uses</u>					
5100 Debt Service / Other Expenditures and Financing Uses	8,488,994.03				
5200 Interfund Transfers - Out	1,008,560.33				
Total Other Expenditures and Financing Uses	\$9,497,554.36				
TOTAL ACTUAL EXPENDITURES & OTHER FINANCING USES	\$91,018,264.46				

LEA : 124158503 Unionville-Chadds Ford SD

Printed 1/6/2022 12:01:39 PM

	<u>Capital Reserve (690.1850)(31)</u>	<u>Capital Reserve (1431)(32)</u>	<u>Other Capital Projects Fund(39)</u>	<u>Debt Service(40)</u>	<u>Permanent(90)</u>
1000 <u>Instruction</u>					
1100 Regular Programs - Elementary / Secondary					
1200 Special Programs - Elementary / Secondary					
1300 Vocational Education					
1400 Other Instructional Programs - Elementary / Secondary					
Total Instruction					
2000 <u>Support Services</u>					
2100 Support Services - Students					
2200 Support Services - Instructional Staff					
2300 Support Services - Administration					
2400 Support Services - Pupil Health					
2500 Support Services - Business					
2600 Operation and Maintenance of Plant Services					
2700 Student Transportation Services					
2800 Support Services - Central					
2900 Other Support Services					
Total Support Services					
3000 <u>Operation of Non-Instructional Services</u>					
3200 Student Activities					
3300 Community Services					
Total Operation of Non-Instructional Services					
4000 <u>Facilities Acquisition, Construction and Improvement Services</u>					
4600 Existing Building Improvement Services		2,493,974.91	2,480,188.44		
Total Facilities Acquisition, Construction and Improvement Services		\$2,493,974.91	\$2,480,188.44		
5000 <u>Other Expenditures and Financing Uses</u>					
5100 Debt Service / Other Expenditures and Financing Uses					
5200 Interfund Transfers - Out			183,572.33		
Total Other Expenditures and Financing Uses			\$183,572.33		
TOTAL ACTUAL EXPENDITURES & OTHER FINANCING USES		\$2,493,974.91	\$2,663,760.77		

LEA : 124158503 Unionville-Chadds Ford SD

Printed 1/6/2022 12:01:39 PM

	<u>Total</u>
1000 <u>Instruction</u>	
1100 Regular Programs - Elementary / Secondary	35,937,461.31
1200 Special Programs - Elementary / Secondary	14,760,091.63
1300 Vocational Education	786,153.03
1400 Other Instructional Programs - Elementary / Secondary	368,335.80
Total Instruction	\$51,852,041.77
2000 <u>Support Services</u>	
2100 Support Services - Students	4,047,405.19
2200 Support Services - Instructional Staff	5,212,625.43
2300 Support Services - Administration	4,073,721.60
2400 Support Services - Pupil Health	784,619.71
2500 Support Services - Business	1,108,181.15
2600 Operation and Maintenance of Plant Services	7,388,905.60
2700 Student Transportation Services	4,294,147.60
2800 Support Services - Central	1,053,330.41
2900 Other Support Services	40,968.17
Total Support Services	\$28,003,904.86
3000 <u>Operation of Non-Instructional Services</u>	
3200 Student Activities	1,649,741.74
3300 Community Services	15,021.73
Total Operation of Non-Instructional Services	\$1,664,763.47
4000 <u>Facilities Acquisition, Construction and Improvement Services</u>	
4600 Existing Building Improvement Services	4,974,163.35
Total Facilities Acquisition, Construction and Improvement Services	\$4,974,163.35
5000 <u>Other Expenditures and Financing Uses</u>	
5100 Debt Service / Other Expenditures and Financing Uses	8,488,994.03
5200 Interfund Transfers - Out	1,192,132.66
Total Other Expenditures and Financing Uses	\$9,681,126.69
TOTAL ACTUAL EXPENDITURES & OTHER FINANCING USES	\$96,176,000.14

LEA : 124158503 Unionville-Chadds Ford SD

Printed 1/6/2022 12:01:49 PM

PSERS Salary Data (Salary Data should relate to the General Fund only)

Amount	Description	Amount
	Total Salary Base for salaries subject to PSERS withholding	40,977,812.20
	Total Federally Funded salaries subject to PSERS withholding	839,316.88

Title I Expenditure Data

Amount	Description	Amount
	Expenditures Funded with Current Title I Funds	102,643.98
	Expenditures Funded with Carry over Title I Funds	
Total Title I Expenditure Data		\$102,643.98

Title IV Revenue Data

Amount	Description	Amount
	Revenue from Title IV-A-1: Student Support and Academic Enrichment Grants	
	Revenue from Title IV-B: 21st Century Community Learning Centers	10,000.00

Title V Revenue Data

Amount	Description	Amount
	Revenue from Title V-B-2: Rural and Low-Income School Programs	
	Revenue from Title V-B-1: Small Rural School Achievement (Directly from the Federal Govt)	

1 .	<u>Current Special Education Expenditures/Expenses within Functions 1000, 2000, 3100, and 3200</u>	23,424,166.32
2 .	<u>Current Special Education Expenditures for Instruction Functions 1000 and 3200</u>	18,155,952.95
3 .	<u>Current Special Education Expenditures for Pupil Support Services Function 2100</u>	1,827,549.08
4 .	<u>Current Special Education Expenditures for Instructional Staff Support Services Function 2200</u>	657,144.15
5 .	<u>Current Special Education Expenditures for Student Transportation Support Services Function 2700</u>	453,137.50

Note: Do not report total Special Education expenditures for the functions listed above. Refer to the AFR User Manual for specific instructions on Funds/Functions/Objects to be included and excluded on each line.

Benefits for Staff Relative to Collective Bargaining Agreements

	OBJECT	COVERED	NOT COVERED	TOTAL
10 General Fund				
	211 Medical Insurance			
	212 Dental Insurance			
	215 Eye Care Insurance			
	216 Prescription Insurance			
	271 Self-Insurance Medical Benefits	2,794,502.64	2,478,143.85	5,272,646.49
	272 Self-Insurance Dental Benefits	282,519.55	221,979.64	504,499.19
	275 Self-Insurance Eye Care Benefits	51,513.64	40,475.01	91,988.65
	276 Self-Insurance Prescription Benefits	834,721.57	740,224.79	1,574,946.36
	FUND TOTAL	\$3,963,257.40	\$3,480,823.29	\$7,444,080.69
50 Enterprise Fund	No Self Insurance data to report			
	211 Medical Insurance			
	212 Dental Insurance			
	215 Eye Care Insurance			
	216 Prescription Insurance			
	271 Self-Insurance Medical Benefits			
	272 Self-Insurance Dental Benefits			
	275 Self-Insurance Eye Care Benefits			
	276 Self-Insurance Prescription Benefits			
	FUND TOTAL			
60 Internal Service Fund	No Self Insurance data to report			
	211 Medical Insurance			
	212 Dental Insurance			
	215 Eye Care Insurance			
	216 Prescription Insurance			
	271 Self-Insurance Medical Benefits			
	272 Self-Insurance Dental Benefits			
	275 Self-Insurance Eye Care Benefits			
	276 Self-Insurance Prescription Benefits			
	FUND TOTAL			
Total of All Funds		\$3,963,257.40	\$3,480,823.29	\$7,444,080.69

LEA : 124158503 Unionville-Chadds Ford SD

Printed 1/6/2022 12:01:58 PM

Function	Special Education (Prior Year)	Nonspecial Education (Prior Year)	Total (Prior Year)	Special Education (Current Year)	Nonspecial Education (Current Year)	Total (Current Year)
2120 Guidance Services	922,567.05	1,713,338.62	2,635,905.67	818,334.79	1,519,764.45	2,338,099.24
2140 Psychological Services	808,312.64	42,545.92	850,858.56	831,809.21	43,782.68	875,591.89
2150 Speech Pathology and Audiology Services						
2160 Social Work Services						
2260 Instruction and Curriculum Development Services	215,751.39	863,007.22	1,078,758.61	265,671.67	1,062,688.74	1,328,360.41
2350 Legal and Accounting Services	44,643.26	76,967.52	121,610.78	48,109.75	103,135.19	151,244.94
2420 Medical Services						
2440 Nursing Services	191,042.80	573,125.38	764,168.18	196,155.71	588,464.00	784,619.71
2700 Student Transportation Services	446,690.34	3,848,409.12	4,295,099.46	446,591.35	3,847,556.25	4,294,147.60
Total	\$2,629,007.48	\$7,117,393.78	\$9,746,401.26	\$2,606,672.48	\$7,165,391.31	\$9,772,063.79

LEA : 124158503 Unionville-Chadds Ford SD

Printed 1/6/2022 12:02:02 PM

(PRINCIPAL AMOUNTS ONLY)

GOVERNMENTAL FUNDS/ ACTIVITIES

	Short-Term Borrowing	General Obligation Bonds/Notes	Authority Building Obligations	Other Long-Term Debt	Other Post- Employment Benefits (OPEB)	Compensated Absences	Net Pension Liability	Total
1. Debt at Beginning of Fiscal Year		75,730,000.00			6,371,325.00	4,094,366.00	133,156,692.00	219,352,383.00
2. Additional Debt Incurred During Year					301,750.00	62,291.00	11,313,519.00	11,677,560.00
3. Retirements and Repayments		5,370,000.00			421,486.00			5,791,486.00
4. Debt at End of Fiscal Year		70,360,000.00			6,251,589.00	4,156,657.00	144,470,211.00	225,238,457.00
5. Accreted Interest at End Of Fiscal Year								
6. Total Debt and Accreted Interest		70,360,000.00			6,251,589.00	4,156,657.00	144,470,211.00	225,238,457.00
7. Current Portion P&I - Due within 1 year		8,410,137.50				156,831.00		8,566,968.50
8. Interest Paid during current fiscal year		3,112,325.00						3,112,325.00

(PRINCIPAL AMOUNTS ONLY)

PROPRIETARY FUNDS

	Short-Term Borrowing	General Obligation Bonds/Notes	Authority Building Obligations	Other Long-Term Debt	Other Post- Employment Benefits (OPEB)	Compensated Absences	Net Pension Liability	Total
1. Debt at Beginning of Fiscal Year							1,951,480.00	1,951,480.00
2. Additional Debt Incurred During Year								
3. Retirements and Repayments							1,068,116.00	1,068,116.00
4. Debt at End of Fiscal Year							883,364.00	883,364.00
5. Accreted Interest at End Of Fiscal Year								
6. Total Debt and Accreted Interest							883,364.00	883,364.00
7. Current Portion P&I - Due within 1 year								
8. Interest Paid during current fiscal year								

Total Principal and Interest Payments Made by Your School - All Funds

Function	Fund		Principal (910)	Principal (920)	Interest (830)	Total (Principal +Interest)	Misc Other Uses (990)
5110	10	General Fund	5,370,000.00		3,112,325.00	8,482,325.00	
5110	20	Special Revenue Funds					
5110	30	Capital Projects Funds					
5110	40	Debt Service Fund					
5110	90	Permanent Fund					
5120	10	General Fund					
5120	20	Special Revenue Funds					
5120	30	Capital Projects Funds					
5120	40	Debt Service Fund					
Total Debt Payments - Governmental Funds			\$5,370,000.00		\$3,112,325.00	\$8,482,325.00	

Function	Fund		Principal (910)	Principal (920)	Interest (830)	Total (Principal +Interest)
5110	50	Enterprise Fund				
5110	60	Internal Service Fund				
5120	50	Enterprise Fund				
5120	60	Internal Service Fund				
Total Debt Payments - Proprietary Funds						

LEA : 124158503 Unionville-Chadds Ford SD

Printed 1/6/2022 12:02:02 PM

Debt Details
Governmental Funds/ Activities

Debt Category	Debt Issue Date (MM/YYYY)	Principal Amounts Only				Current Portion Due Within One Year (Principal and Interest)	Interest Paid During Fiscal Year
		Debt at Beginning of Fiscal Year	Additions	Reductions / Repayments	Debt at End of Fiscal Year		
General Obligation Bonds/Notes – CIB	05/2019	8,660,000.00		495,000.00	8,165,000.00	788,575.00	293,425.00
General Obligation Bonds/Notes – CIB	05/2019	2,820,000.00		2,525,000.00	295,000.00	213,200.00	109,200.00
General Obligation Bonds/Notes – CIB	09/2016	57,005,000.00		5,000.00	57,000,000.00	4,795,975.00	2,441,075.00
General Obligation Bonds/Notes – CIB	02/2015	6,825,000.00		2,140,000.00	4,685,000.00	2,390,937.50	256,537.50
General Obligation Bonds/Notes – CIB	09/2010	420,000.00		205,000.00	215,000.00	221,450.00	12,087.50
Compensated Absences		4,094,366.00	62,291.00		4,156,657.00	156,831.00	
Other Post-Employment Benefits (OPEB)		6,371,325.00	301,750.00	421,486.00	6,251,589.00		
Net Pension Liability		133,156,692.00	11,313,519.00		144,470,211.00		
Totals for Debt Entered:		\$219,352,383.00	\$11,677,560.00	\$5,791,486.00	\$225,238,457.00	\$8,566,968.50	\$3,112,325.00

Bond Details
Proprietary Funds

Debt Category	Debt Issue Date (MM/YYYY)	Principal Amounts Only				Current Portion Due Within One Year (Principal and Interest)	Interest Paid During Fiscal Year
		Debt at Beginning of Fiscal Year	Additions	Reductions / Repayments	Debt at End of Fiscal Year		
Net Pension Liability		1,951,480.00		1,068,116.00	883,364.00		
Totals for Debt Entered:		\$1,951,480.00		\$1,068,116.00	\$883,364.00		

LEA : 124158503 Unionville-Chadds Ford SD

General Fund (10)

Section 1: Tuition/Purchased Services as Reported within Expenditure Detail	Amount
Tuition Reported in General Fund Expenditures 1000-560	2,478,446.93
Purchased Services in General Fund Expenditures 1000-594 and 1000-597	
Section 1 Total	\$2,478,446.93

Section 2: Tuition Paid to Institution Types During Fiscal Year	Tuition Paid For Nonspecial Education	Tuition Paid For Special Education	Total
1 1306 Institutions			
2 Institutionalized Children's Programs			
3 Juveniles Incarcerated in Adult Facilities			
4 Residential Treatment Facilities			
5 Other Local Education Agencies	317,482.88	206,885.59	524,368.47
6 Brick and Mortar Charter Schools	40,602.90	44,840.32	85,443.22
7 Cyber Charter Schools	639,700.93	253,906.65	893,607.58
8 Career and Technology Centers	786,153.03		786,153.03
9 Approved Private Schools		65,759.16	65,759.16
10 PA Chartered Schools for the Deaf and Blind			
11 Private Residential Rehabilitative Institutions			
12 Juvenile Detention Centers	123,115.47		123,115.47
13 Special Program Jointures			
14 Other Tuition Not Included Elsewhere In This Section			
Section 2 Total	\$1,907,055.21	\$571,391.72	\$2,478,446.93

1 .	<u>Student Transportation Services for Educational Field Trips</u>	
2 .	<u>Student Transportation Services for Student Activities</u>	11,733.87
3 .	<u>Rental of Vehicles for Student Transportation Services</u>	
4 .	<u>Capital Reserve Funds</u>	

Include only district-owned transportation expenditures paid from State or local money.
DO NOT include federal expenditures or payments to contract service providers.
Contracted transportation services should not be recorded on this schedule.

LEA : 124158503 Unionville-Chadds Ford SD

Printed 1/6/2022 12:02:16 PM

Food Service / Cafeteria Operations Fund (51)

3000 Operation of Non-Instructional Services

Total

100	<u>Personnel Services – Salaries</u>	
100	Personnel Services – Salaries	339,372.58
Total Personnel Services – Salaries		\$339,372.58
200	<u>Personnel Services – Employee Benefits</u>	
220	Social Security Contributions	16,695.59
230	PSERS Retirement Contributions	(929,593.03)
270	Group Insurance – Self-Insurance	185,816.85
Total Personnel Services – Employee Benefits		(\$727,080.59)
600	<u>Supplies</u>	
610	General Supplies	327,675.29
Total Supplies		\$327,675.29
700	<u>Property</u>	
740	Depreciation	71,897.87
Total Property		\$71,897.87
Total 3000 Operation of Non-Instructional Services		\$11,865.15

LEA : 124158503 Unionville-Chadds Ford SD

Printed 1/6/2022 12:02:16 PM

Food Service / Cafeteria Operations Fund (51)

3100 Food Services	<u>Elementary</u>	<u>Secondary</u>	<u>Federal</u>	<u>Total</u>
100 <u>Personnel Services – Salaries</u>				
100 Personnel Services – Salaries				339,372.58
Total Personnel Services – Salaries				\$339,372.58
200 <u>Personnel Services – Employee Benefits</u>				
220 Social Security Contributions				16,695.59
230 PSERS Retirement Contributions				(929,593.03)
270 Group Insurance – Self-Insurance				185,816.85
Total Personnel Services – Employee Benefits				(\$727,080.59)
600 <u>Supplies</u>				
610 General Supplies				327,675.29
Total Supplies				\$327,675.29
700 <u>Property</u>				
740 Depreciation				71,897.87
Total Property				\$71,897.87
Total 3100 Food Services				\$11,865.15

LEA : 124158503 Unionville-Chadds Ford SD

Printed 1/6/2022 12:02:13 PM

Internal Service Fund (60)

2000 Support Services

Total

200 <u>Personnel Services – Employee Benefits</u>	
270 Group Insurance – Self-Insurance	7,435,246.94
Total Personnel Services – Employee Benefits	\$7,435,246.94
300 <u>Purchased Professional and Technical Services</u>	
390 Other Purchased Professional and Technical Services	8,833.75
Total Purchased Professional and Technical Services	\$8,833.75
Total 2000 Support Services	\$7,444,080.69

LEA : 124158503 Unionville-Chadds Ford SD

Printed 1/6/2022 12:02:13 PM

Internal Service Fund (60)

2800 Support Services – Central

Elementary Secondary Federal Total

200 <u>Personnel Services – Employee Benefits</u>				
270 Group Insurance – Self-Insurance				7,435,246.94
Total Personnel Services – Employee Benefits				\$7,435,246.94
300 <u>Purchased Professional and Technical Services</u>				
390 Other Purchased Professional and Technical Services				8,833.75
Total Purchased Professional and Technical Services				\$8,833.75
Total 2800 Support Services – Central				\$7,444,080.69

LEA : 124158503 Unionville-Chadds Ford SD

Printed 1/6/2022 12:02:13 PM

Internal Service Fund (60)

2830 Staff Services

Elementary Secondary Federal Total

200 <u>Personnel Services – Employee Benefits</u>				
270 Group Insurance – Self-Insurance				7,435,246.94
Total Personnel Services – Employee Benefits				\$7,435,246.94
300 <u>Purchased Professional and Technical Services</u>				
390 Other Purchased Professional and Technical Services				8,833.75
Total Purchased Professional and Technical Services				\$8,833.75
Total 2830 Staff Services				\$7,444,080.69

LEA : 124158503 Unionville-Chadds Ford SD

Printed 1/6/2022 12:02:13 PM

Internal Service Fund (60)

2835 Health Services

<u>Elementary</u>	<u>Secondary</u>	<u>Federal</u>	<u>Total</u>
-------------------	------------------	----------------	--------------

200 <u>Personnel Services – Employee Benefits</u>			
270 Group Insurance – Self-Insurance			7,435,246.94
Total Personnel Services – Employee Benefits			\$7,435,246.94
300 <u>Purchased Professional and Technical Services</u>			
390 Other Purchased Professional and Technical Services			8,833.75
Total Purchased Professional and Technical Services			\$8,833.75
Total 2835 Health Services			\$7,444,080.69

	<u>Food Service(51)</u>	<u>Child Care Operations(52)</u>	<u>Other Enterprise(58)</u>	<u>Internal Service(60)</u>	<u>Total</u>
2000 <u>Support Services</u>					
2800 Support Services - Central				7,444,080.69	7,444,080.69
Total Support Services				\$7,444,080.69	\$7,444,080.69
3000 <u>Operation of Non-Instructional Services</u>					
3100 Food Services	11,865.15				11,865.15
Total Operation of Non-Instructional Services	\$11,865.15				\$11,865.15
TOTAL ACTUAL EXPENDITURES & OTHER FINANCING USES	\$11,865.15			\$7,444,080.69	\$7,455,945.84

LEA : 124158503 Unionville-Chadds Ford SD

Printed 1/6/2022 12:02:31 PM

Fund	School	School Number	Local Personnel	Local Nonpersonnel	State Personnel	State Nonpersonnel	Federal Personnel	Federal Nonpersonnel	Total	Explanation
10										
	Chadds Ford El Sch	1441	4,991,654.64	666,765.70	1,095,729.07	146,363.20	168,122.95	49,688.00	7,118,323.56	
	Charles F Patton MS	6719	13,547,698.46	1,677,360.95	2,973,885.03	368,201.19	269,666.67	132,849.00	18,969,661.30	
	Hillendale El Sch	7214	5,508,934.07	595,238.69	1,209,278.21	130,662.15	84,645.08	48,119.00	7,576,877.20	
	Pocopson El Sch	7736	7,045,295.20	848,124.77	1,546,528.22	186,173.73	211,149.04	71,132.00	9,908,402.96	
	Unionville El Sch	1442	4,870,170.19	607,236.39	1,069,061.75	133,295.79	150,091.00	41,842.00	6,871,697.12	
	Unionville HS	1443	17,258,702.54	3,011,613.83	3,788,495.68	661,085.96	653,296.58	179,398.00	25,552,592.59	
Total			53,222,455.10	7,406,340.33	11,682,977.96	1,625,782.02	1,536,971.32	523,028.00	75,997,554.73	