

FRANKLIN PIERCE SCHOOLS

High School

Course Catalog



FRANKLIN PIERCE HIGH SCHOOL
GATES HIGH SCHOOL
WASHINGTON HIGH SCHOOL

**FRANKLIN
PIERCE
SCHOOLS**

TABLE OF CONTENTS

<u>Franklin Pierce Schools Vision, Mission, & Graduate Profile</u>	2
<u>Graduation Requirements</u>	3
<u>General Information: Course Taking Policies, Procedures and Opportunities</u>	6
<u>Dual Credit Options</u>	9
<u>Four-Year Planning Sheet</u>	11
<u>Courses at a Glance</u>	13
<u>Course Descriptions</u>	
<u>Arts (Theatre, Music, Technical & Visual Arts)</u>	22
<u>Career and Technical Education (CTE)</u>	31
<u>English Language Arts</u>	44
<u>English Language Learning</u>	49
<u>Health & Physical Education</u>	50
<u>Mathematics</u>	53
<u>Science</u>	59
<u>Social Studies</u>	65
<u>Special Education</u>	70
<u>World Language</u>	73
<u>Additional Elective Classes</u>	76
<u>Pierce County Skills Center</u>	79
<u>Counseling and Career Services</u>	83
<u>GATES High School</u>	84

FRANKLIN PIERCE SCHOOLS

The purpose of this Course Catalog is to guide students, families, and the Franklin Pierce Schools community to make decisions that will drive our Mission and fulfill our Vision that every student thrives on the path to graduation and beyond. This guide provides information on *the What* (requirements), *the How* (courses) and *the Why* (skills for life, college, and career) of the high school experience. The Franklin Pierce Schools community celebrates working in partnership to co-create a just, healthy, and sustainable future together.

The Course Catalog includes courses offerings at the comprehensive high schools for the 2022 – 2023 registration process. From these offerings, students will indicate their preferences. Actual student schedules will be based on student interests and staff availability. GATES High School provides a limited range of course offerings in a unique schedule and quarterly structure: learn about their program in the Catalog.

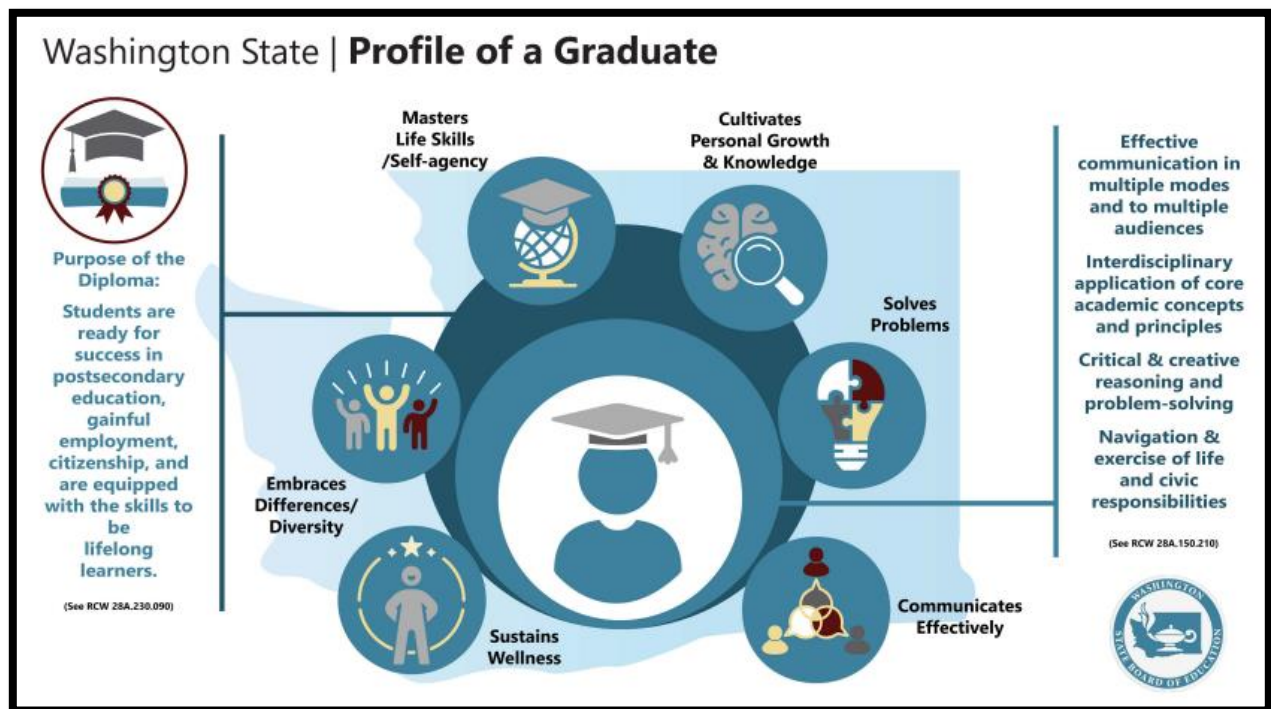
Mission

We relentlessly engage students in diverse learning experiences grounded in authentic relationships, quality teaching, and high expectations.

Vision

Every student thrives on the path to graduation and beyond.

The Franklin Pierce Schools' high school program of study is designed to ensure students graduate ready to grow and contribute to their communities, post-secondary education settings, and careers. Necessary competencies are outlined in Washington law and expressed in Washington State's Profile of a Graduate. High school courses and programs empower students in these areas.



GRADUATION REQUIREMENTS

In accordance with Franklin Pierce Schools Board Policy # 2410 students must have completed all requirements for graduation prior to receiving a diploma and participating in the graduation ceremony.

1 HIGH SCHOOL & BEYOND PLAN

The High School and Beyond Plan (HSBP) process is a graduation requirement that every FPS student uses to explore potential career interests, take relevant courses, and plan for post-high school education or training. Each student begins their own personalized plan in 8th grade, then works with school staff and their family to revise it throughout high school. The result is a plan that promotes student success and well-being while establishing a next step after graduation.

Students in Franklin Pierce Schools must successfully complete and share their plans to meet the graduation requirement. During advisory in grades 9-12, students research, develop, and modify their plans as they identify options for employment, enlistment, and enrollment after graduation. Advisory activities at each grade level support this process. Students share the development of the plan with their family at annual student-led conferences.

2 HIGH SCHOOL COURSE CREDITS

Each semester a student can earn four credits, with eight total credits per year possible. Most students can earn 32 total credits over four years.

With the transition to an eight-period schedule in the 2021-22 school year, the required number of credits for graduation varies by year:

Classes of 2023 and 2024:

24 credits

Class of 2025:

28 credits

Class of 2026 and beyond:

30 credits

Specific course requirements may also vary by graduation year and are specified in this catalog.

Counselors regularly monitor students' progress toward graduation goals and requirements. Teachers and other support staff provide help so all students stay on track to graduate.

3 GRADUATION PATHWAYS

All high school students take state tests that are aligned to our learning standards in English language arts, math, and science. Passing the English and math tests is one pathway in this third requirement for graduation.

In addition to passing state tests, there are other graduation pathway options for students to meet this state requirement. Students demonstrate their readiness to enter a postsecondary career or attend college by completing any one of the graduation pathways outlined on following pages. Options include academic coursework and testing options, a Career/Technical education sequence, and a qualifying military career interest score.

For information about state testing and high school graduation requirements, visit <https://www.k12.wa.us/student-success/graduation/graduation-requirements>.

HIGH SCHOOL COURSE CREDIT REQUIREMENTS

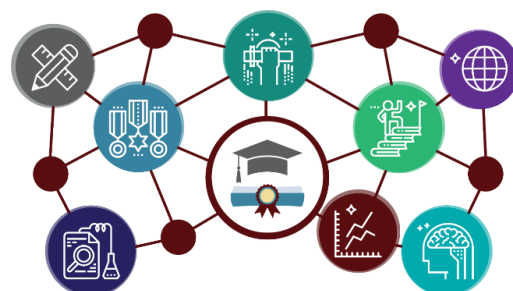
<u>English</u>	4.0	
<u>Math</u>	3.0	Algebra I Geometry 1-2 Algebra II/Modern Algebra II * *Algebra II/Modern Algebra II may be met by another third-year math course chosen by the student based on interest and their High School and Beyond Plan (HSBP). See counselor for details. Algebra II/Modern Algebra II, as well as a senior year math-based quantitative course, is a requirement for admission to Washington public four-year baccalaureate institutions, as well as many other universities.
<u>Science</u>	3.0	At least two credits of lab science are required. The third credit should be chosen by the student based on interest and their High School and Beyond Plan (HSBP). The recommended sequence is Biology – Physical Science – Chemistry.
<u>Social Studies</u> **	3.0	1.0 World History 1.0 US History 0.5 Civics 0.5 Contemporary World Problems or Ethnic Studies **Washington State History is required for graduation. FPS students fulfill this state requirement in Grade 7. Transfer students may need to complete this requirement prior to graduation. See counselor for details.
<u>Arts</u>	2.0	1 credit may be earned in a Personalized Pathway.***
<u>World Language</u>	2.0	Two consecutive years in the same language. Both credits may be earned in a Personalized Pathway.***
<u>Health & Fitness</u>	2.0	1.5 Physical Education .5 Health
<u>Career & Technical Ed</u>	1.0	
Electives		
Classes of '23 and '24	4.0	
Class of '25	8.0	
Class of '26	10.0	

*** "Personalized pathway" means coursework identified in a student's High School and Beyond Plan that is deemed necessary to attain the post-secondary career or educational goals chosen by the student.

GRADUATION PATHWAYS

Career/Technical Field CTE Course Sequence:

Complete 2.0 or more credits in a CTE course progression within the same Program Area tailored to the student's goals and relevant to the postsecondary pathway(s) outlined in the student's High School and Beyond Plan.



ASVAB Exam for Military Career Interest:

Meet standard on the ASVAB (Armed Services Vocational Aptitude Battery) by scoring at least the minimum score on the Armed Forces Qualification Test (AFQT) established by the military for eligibility to serve in a branch of the armed services. The State Board of Education will post the score needed to meet this pathway on its website annually (www.sbe.wa.gov/our-work/graduation-pathway-options/asvab). Students are not required to enlist, meet physical or other military enlistment requirements, or release score or personal information to the military.

Postsecondary Education English Language Arts (ELA) and Math Courses & Exams:

Use any combination of the ELA and math options listed in this section.

College admissions tests (ACT/SAT):

Meet or exceed the scores set by the State Board of Education in the ELA and Math sections of the ACT (ELA = 14; math = 16) or SAT (ELA = 410; math = 430).

Dual credit courses:

Earn at least 1.0 credit in College in the High School or Running Start dual credit courses. Or pass a state-approved Advanced Placement (AP) course with a C+ or better each semester.

Dual credit exams:

Earn a 3 or higher on certain state-designated Advanced Placement (AP) exams.

State assessments:

Meet or exceed the graduation scores in the Smarter Balanced Assessments (SBA) in English language arts (ELA) and mathematics or in WA-AIM (Washington Access to Instruction & Measurement).

Transition courses:

Earn credits in high school Bridge to College English and math courses that, based on their final grade, allow students to place directly into credit-bearing college level courses (courses with college course numbers of 100 or above).

Specific course and test score requirements are updated at the Office of the Superintendent of Public Instruction: <https://www.k12.wa.us/student-success/graduation/graduation-requirements/graduation-pathways>.

GENERAL INFORMATION

Class Schedule

To take full advantage of educational offerings in preparation for success beyond graduation, students are expected to enroll in eight (8) classes per semester. 11th and 12th graders *may* be granted an early release or late arrival only if requested by a parent or guardian and with the approval of a school counselor. All students are also assigned to an advisory period. Students who are participating in athletics may not have an early dismissal during the sports season.

Academic Acceleration

Engagement in rigorous coursework prepares students best for success in postsecondary education and/or employment after high school. To enable student participation in rigorous classes, the district will automatically consider for enrollment those students who meet state standards on the high school statewide student assessment in the next most rigorous level of advanced courses offered by the high school. (Policy 2195)

Schedule Changes

Students must submit a written schedule change request to their counselor by email or by completing a schedule change form. Class requests should be consistent with High School and Beyond Plans, credit requirements, and graduation pathway options. Students should confirm timelines and processes for this at their school.

Advisory & Navigation

Within an advisory period, students meet with a teacher for social emotional learning, academic support, and post-secondary planning (Navigation) – Cardinal Connections at Franklin Pierce HS, Check & Connect at GATES HS, Patriot Partnership at Washington HS. Within advisory time, students develop, monitor, and adjust their High School and Beyond Plans (HSBPs). Based on their goals and interests, students are encouraged to explore related options for enrollment, employment, and enlistment (three Es) following high school. Navigation also supports students' preparation for student-led conferences and senior culminating activities. Students can earn .25 credits annually upon successful completion of grade-level requirements. Advisory is a Pass/Fail class.

Career & Technical Education (CTE)

Career and Technical Education (CTE) programs enable students to explore career pathways based on their interests. A sequence of CTE courses in a focused program area can be used as a graduation pathway. Many CTE classes are dual credit courses where students may earn both high school and college credits. Some CTE courses may also satisfy graduation requirements in various content areas. See course descriptions for more information.

College Admissions (WA)

For more information on admission requirements for Washington's 34 community and technical colleges and four-year baccalaureate colleges in Washington, consult <https://wsac.wa.gov/college-admissions>.

Generally, Washington's public four-year colleges require a 2.0 grade point average and successful completion of the following coursework: 4 credits of English; 3 credits of math including Algebra II/Modern Algebra II; a senior year quantitative math course; 3 credits of social studies; 2 credits of science; 2 credits of world language; and 1 credit in arts. All of Washington's public four-year colleges are permanently test-optional, so the ACT or SAT are not required. All of Washington's private, not-for-profit four-year colleges offer test-optional pathways. Washington's public two-year community and technical colleges are open access, so anyone with a high school diploma or GED can apply and attend; test scores and GPAs are not considered. (Note: Meeting minimum college entrance requirements does not guarantee admission.)

Several colleges/universities in Washington offer specific programs for students with intellectual disabilities. Students and families are encouraged to check out programs at Bellevue College ([Occupational & Life Skills](#)), Highline College ([Achieve](#)), Seattle Central College ([Mainstay/SAILS](#)), Skagit Valley College ([INVEST](#)), and Washington State University ([ROAR](#)).

Grading

Franklin Pierce Schools utilize standards-based grading, wherein students' proficiency is assessed and reported for course-specific standards. In course assessments, students receive scores of: 1=Below Basic, 2=Basic, 3=Proficient, 4=Advanced. These scores are translated to a letter grade as required for the state high school transcript. Grading scales are shown at: <https://www.fpschools.org/departments/teaching-and-learning/student-grades>

"INC" Grades (No Credit Earned): Students who receive an INC grade, with a grade of 2.0 or better in the course, at the end of a semester can complete that course with their teacher. An incomplete may be changed to a letter grade within twenty days after the close of a semester when proficiency is demonstrated on course standards at a grade of 2.0 or higher. Incomplete grades will revert to "F" after that time. A building administrator must approve all other grade changes.

Athletic Eligibility: A student must have passed seven academic courses (out of an 8-period day) from the previous term and be passing seven academic courses during the sports season to be eligible to participate in athletics. Refer to the [WIAA athletic code](#) for additional athletic eligibility requirements.

High School Credit Retrieval

Students with credit or course deficiencies are required to make up the credit to meet graduation requirements. Credit recovery courses, summer school, and remote course options may be available. Students with credit deficiencies should see their counselor for pre-approval and additional information.

Home School Courses

Any credit received for work outside of the regular school program requires the superintendent of the school district (or a designee) to approve the course work. Home-schooled students are encouraged to participate in activities and athletics in Franklin Pierce Schools. Students may see a high school counselor for more information.

NCAA

College-bound student-athletes enrolling at a Division I or II school must meet specified academic requirements to practice, compete, and receive an athletics scholarship. These include course, GPA, and SAT/ACT testing requirements. In planning their high school classes, student-athletes should consult <https://www.ncaa.org/student-athletes/future>.

Pierce County Skills Center (PCSC)

The Pierce County Skills Center serves high school juniors and seniors under the age of 21 from ten school districts in this area. PCSC focuses on hands-on learning and offers a variety of courses to choose from. PCSC students earn high school and even college credit in selected areas. Franklin Pierce students attend mornings or afternoons, depending on program selection. To participate in PCSC, students must be on track with graduation requirements and should have good attendance (95% or higher). A list of course descriptions can be found in course descriptions. For more information, students may see their counselor or go to www.pcskillscenter.org.

The Seal of Biliteracy

The Washington State Seal of Biliteracy recognizes public high school graduates who have attained a high level of proficiency in speaking, reading, and writing in one or more world languages in addition to English. Graduating seniors earn this distinction by meeting all ELA graduation requirements and demonstrating proficiency in another world language either by earning four credits through proficiency testing or earning a score of three or higher on an AP World Language exam. Where students are eligible for the Seal, a notation is made on the student's high school diploma and high school transcript indicating that the student has earned the distinction.

DUAL CREDIT OPTIONS

Dual Credit provides students with the potential to earn high school and college credit at the same time. Why dual credit? In today's world, two-thirds of all jobs require some post-high school training or education. Taking dual credit is connected to higher high school graduation rates, college enrollment, and degree completion.

Dual credit options in Franklin Pierce Schools are listed below. The features of each dual credit option vary. Some are taught on the high school campus while others require students to travel to a postsecondary campus. Some require passing an exam to earn credit while in others credit is based on satisfactory course completion. Where students have specific postsecondary plans in mind, they should consult the requirements of relevant university or career programs to select the best dual credit option.

Dual Credit (DC) options by course are noted in the Courses at a Glance table and in Course Descriptions in this guide.

Advanced Placement (AP)

Students earn regular high school credit upon successful completion of the course and may gain college credit if they earn a qualifying score on the corresponding AP exam. University credit is generally granted for test scores of 3 and above on a five-point scale, however, each university has their own standards for accepting credit for AP exams. For more information on the AP program, go to www.collegeboard.com/ap. Students enrolling in three or more concurrent AP classes must have prior approval from their counselor. Students who enroll in year-long AP courses are expected to remain in those courses for the entire year.

College in the High School (CHS)

In association with Washington universities, high school students may earn college credit for completing these classes on the high school campus. College credit earned may count as elective or academic credit depending on the receiving college's transfer credit policies. Franklin Pierce Schools is applying to participate in this program beginning the 2022-23 school year: see course options in the subject areas for potential offerings.

There is no fee for students to enroll in a CHS or co-delivered dual credit course that includes CHS to earn only high school credit. Fees apply for students who choose to enroll in a CHS course to earn both high school and college credit. College credit fees are as follows:

- Central WA University: \$60/credit
- Eastern WA University: \$65/credit
- University of WA: \$66/credit, plus a \$45 registration fee

Courses typically run five credits. Fees are collected by the University at the beginning of the fall semester. Tuition assistance is available to students who qualify for free and reduced lunch services. Students should note that paying for the college credit automatically starts an official college transcript with the institution offering the course that will include the student's performance.

CTE Dual Credit

Dual credit courses offer students an opportunity to earn Community/Technical College credit while attending high school classes. CTE Dual Credit classes are taught at the high school or Puget Sound Skills Center and integrate academics with technical skills to help prepare students for advanced education and careers related to professional-technical occupations. High school students who complete selected high school courses with a grade of 'C' (2.0) or better can earn Community/Technical College credit. After June 30th of the summer after completing required high school courses, students may contact the PC3 office at 253-583-8803 for transcription of CTE Dual credits. More information about CTE Dual Credit can be found online at Pierce County Careers Connection at www.pc3connect.com or Washington State Board for Community and Technical Colleges at www.sbctc.edu/colleges-staff/programs-services/cte-dual-credit.

Running Start

Running Start offers qualified juniors and seniors the opportunity to earn high school graduation and college credits by taking approved courses at Tacoma Community College, Pierce College, or Clover Park Technical College without paying tuition. (Books, supplies, other fees, and transportation are the responsibility of the student.) To be eligible for this program, students must 1) have earned the credits necessary for junior or senior status; 2) demonstrate readiness for college-level study through their performance on a college placement exam; 3) meet course prerequisites. It is not usually advisable for students to try to transfer to the Running Start Program during the middle of the school year. The community/technical colleges are on a three-quarter system that does not match starting times with our semesters. **Students planning to take Running Start courses during fall quarter must have the application process completed by early spring of the prior year.**

FOUR YEAR PLANNING SHEET

Graduation Credit Requirements:

Credits	Content Area
4.0	English
3.0	Math
3.0	Science
3.0	Social Studies
1.5	Physical Education (PE)
0.5	Health
2.0	Arts (or 1 Art & 1 Personal Pathway)
1.0	Career and Technical Education (CTE)
2.0	World Language or Personal Pathway
4.0	Elective credits (Classes of 2023, 2024)
8.0	Elective credits (Class of 2025)
10.0	Elective credits (Class of 2026)
24.0	Classes of 2023, 2024 Total Credits
28.0	Class of 2025 Total Credits
32.0	Class of 2026 Total Credits

The graduation requirements reflect a minimum standard for high school completion. Students are encouraged to persist in core classes throughout their high school program.

Four-year college admission requires two years of World Language and a senior year quantitative math course.

CTE courses may satisfy two graduation requirements while earning one credit for a single course. (See course descriptions.)

Freshman Year

First Semester	Second Semester
English Language Arts:	English Language Arts:
Mathematics:	Mathematics:
Science:	Science:
Health or Intro to PE:	Health or Intro to PE:
Personalized Pathway Elective:	Personalized Pathway Elective:
Elective:	Elective:
Elective:	Elective:
Elective:	Elective:

Sophomore Year

First Semester	Second Semester
English Language Arts:	English Language Arts:
Social Studies:	Social Studies:
Mathematics:	Mathematics:
Science	Science
Personalized Pathway Elective:	Personalized Pathway Elective:
Elective (World Language):	Elective (World Language):
Elective:	Elective:
Elective:	Elective:

Junior Year

First Semester	Second Semester
English Language Arts:	English Language Arts:
Social Studies (US):	Social Studies (US):
Mathematics:	Mathematics:
Science:	Science:
Personalized Pathway Elective:	Personalized Pathway Elective:
Elective (World Language):	Elective (World Language):
Elective:	Elective:
Elective:	Elective:

Senior Year

First Semester	Second Semester
English Language Arts:	English Language Arts:
Social Studies:	Social Studies:
Elective (Mathematics):	Elective (Mathematics):
Elective (Science):	Elective (Science):
Personalized Pathway Elective:	Personalized Pathway Elective:
Elective:	Elective:
Elective:	Elective:
Elective:	Elective:

COURSES AT A GLANCE 2022-2023

The course table summarizes offerings at Franklin Pierce and Washington High Schools for the 2022-2023 school year. Students and families should consult Course Descriptions for more information about each course. A number series after a course title denotes a yearlong course. Otherwise, courses are one semester unless otherwise noted.

Graduation requirements reflect a minimum standard for high school completion. Students are encouraged to persist in core classes throughout their high school program. When all required courses in a subject area are completed, additional courses in that subject count as elective credits.

COURSE	SCHOOLS	GRADUATION REQUIREMENT	GRADE LEVEL	SEMESTER 1 COURSE NO.	SEMESTER 2 COURSE NO.
Arts					
AFJROTC Drill and Ceremonies	WHS	Arts/CTE/PE	9 – 12	FLT611	
AP Art & Design 1,2 (DC Exam)	FPHS, WHS	Arts/CTE	10 – 12	FNA131	FNA132
Choir Beginning 1, 2	FPHS	Arts	9 – 12	FNA301	FNA302
Choir Intermediate 1, 2	FPHS, WHS	Arts	9 – 12	FNA313	FNA314
Choir Advanced 1, 2	FPHS, WHS	Arts	10 – 12	FNA315	FNA316
Community Art (DC)	FPHS, WHS	Arts	10 – 12	FNA133	
Concert Band 1, 2	FPHS, WHS	Arts	9 – 12	FNA411	FNA412
Digital Photography Beginning (DC)	FPHS, WHS	Arts/CTE	9 – 12	ATC301	
Digital Photography Advanced	FPHS, WHS	Arts/CTE	9 – 12	ATC302	
Drama	FPHS, WHS	Arts	9 – 12	FNA211	
Drama Advanced 1, 2	WHS	Arts	10 – 12	FNA213	FNA214
Drumline for Beginners	FPHS	Arts	9 – 12	FNA 567	
Glass Art Beginning	FPHS	Arts/CTE	9 – 12	FNA113	
Glass Art Advanced	FPHS	Arts/CTE	9 – 12	FNA114	
Graphic Design (DC)	FPHS, WHS	Arts/CTE	9 – 12	ATC321	
Guitar Beginning	FPHS	Arts	9 – 12	FNA615	
History of Rock & Roll	FPHS, WHS	Arts	9 – 12	FNA571	
Instrumental Jazz Ensemble 1, 2	FPHS, WHS	Arts	9 – 12	FNA419	FNA420
History of Classical Music	FPHS, WHS	Arts	9 – 12	FNA572	
Jazz Choir 1, 2	FPHS	Arts	10 – 12	FNA325	FNA326
Percussion Ensemble Beginning 1, 2	WHS	Arts	9 – 12	FNA417	FNA418

Percussion Ensemble 1, 2	WHS	Arts	9 – 12	FNA427	FNA428
Percussion Ensemble Advanced 1, 2	WHS	Arts	9 – 12	FNA437	FNA438
Piano/Keyboarding Beginning	WHS	Arts	9 – 12	FNA601	
Pottery Beginning	FPHS, WHS	Arts/CTE	9 – 12	FNA117	
Pottery Advanced	FPHS, WHS	Arts/CTE	9 – 12	FNA118	
Screen Printing Beginning (DC)	WHS	Arts/CTE	9 – 12	FNA115	
Screen Printing Advanced (DC)	WHS	Arts/CTE	9 – 12	FNA125	
Steel Drums Ensemble Beginning 1, 2	WHS	Arts	9 – 12	FNA611	FNA612
Steel Drums Advanced 1, 2	WHS	Arts	10 – 12	FNA621	FNA622
Symphonic Band 1, 2	FPHS	Arts	9 – 12	FNA413	FNA414
Technology Exploration 1, 2 (DC) *	FPHS	Arts/CTE	9 – 12	ATC311	ATC312
Ukulele	WHS	Arts	9 – 12	FNA617	
Unified Art	WHS	Arts	10 – 12	FNA100	
Video Editing 1, 2 (DC)	FPHS. WHS	Arts/CTE	9 – 12	ATC211	ATC212
Video Production 1, 2 (DC)	FPHS. WHS	Arts/CTE	9 – 12	ATC221	ATC222
Visual Art & Design (DC)	FPHS. WHS	Arts/CTE	9 – 12	FNA111	
Wind Ensemble 1, 2	WHS	Arts	9 – 12	FNA415	FNA416
World Music Ensemble	FPHS	Arts	9 – 12	FNA603	
Yearbook 1, 2 (DC)	FPHS, WHS	Arts/CTE	10 – 12	ATC401	ATC402
CTE-Agricultural Science					
ECO System Design 1, 2 (2 period block class) (DC) *	FPHS, WHS	Science (1) & CTE (1)	9 – 12	SCI621	SCI622
Food Justice in Action (2 period daily class) (DC) *	FPHS, WHS	Science(1) & CTE(2) & English(1)	10 – 12	SCI651	SCI652
Restoration Ecology (DC)	FPHS, WHS	Science/CTE	9 – 12	SCI627	
CTE-Business and Marketing					
AP Computer Science 1, 2 (DC Exam)	FPHS, WHS	Math (3rd Year)/CTE	10 – 12	TEC231	TEC232
Business Management (DC)	FPHS, WHS	CTE	9 – 12	BUS111	
Entrepreneurship (DC)	FPHS, WHS	CTE	9 – 12	BUS112	
Financial Literacy 1, 2 (DC)	FPHS, WHS	Math (3rd Year)/CTE	11 – 12	BUS211	BUS212
Intro to Computer Science 1, 2 (DC)	FPHS, WHS	Math (3rd Year)/CTE	9 – 12	TEC113	TEC114
Marketing (DC)	FPHS, WHS	CTE	9-12	BUS115	
Technology Exploration 1, 2 (DC) *	FPHS	Art/CTE	9 – 12	ATC311	ATC312

Yearbook 1, 2 (DC)	FPHS, WHS	Art/CTE	10 – 12	ATC401	ATC402
CTE-Family and Consumer Science					
American Sign Language 1, 2 (DC)	FPHS, WHS	World Language/CTE	9 – 12	WRL111	WRL112
American Sign Language 3, 4	FPHS, WHS	World Language/CTE	10 – 12	WRL113	WRL114
American Sign Language 5, 6	WHS	World Language/CTE	11 – 12	WRL115	WRL116
Culinary Arts Advanced (DC) *	FPHS, WHS	CTE	10 – 12	FCS113	
Culinary Arts Beginning (DC) *	FPHS, WHS	CTE	9 – 12	FCS111	
Early Childhood Education (DC)	FPHS, WHS	CTE	10 – 12	FCS211	
Family Health *	FPHS, WHS	Health/CTE	9 – 12	HPE111	
Independent Living	WHS	CTE	10 – 12	FCS311	
Teaching Academy 1, 2 (DC) *	FPHS, WHS	CTE	10 – 12	CIE311	CIE312
CTE-Health Science					
Biomedical Innovation 1, 2	FPHS, WHS	Science/CTE	11 – 12	SCI415	SCI416
Fitness Specialist 1, 2 (DC) *	FPHS	PE/CTE	11-12	HPE211	HPE212
Human Body Systems 1, 2 (DC)	FPHS, WHS	Science/CTE	10 – 12	SCI215	SCI216
Medical Interventions 1, 2 (DC)	FPHS, WHS	Science/CTE	11 – 12	SCI315	SCI316
Principles of Biomedical Science 1, 2 (DC)	FPHS, WHS	Science/Health/CTE	9 – 12	SCI115	SCI116
Sports Medicine Advanced 3, 4 (DC) *	FPHS	CTE	11 – 12	MDC121	MDC122
Sports Medicine Beginning 1, 2 (DC)*	FPHS	CTE	10 – 12	MDC111	MDC112
CTE-Science Technology Engineering Math (STEM)					
Aerospace Manufacturing 1, 2 *	FPHS, WHS	Math (3rd Year)/CTE	10 – 12	TEC213	TEC214
Aerospace Manufacturing Adv 3, 4 *	FPHS, WHS	Math (3rd Year)/CTE	11 – 12	TEC313	TEC314
Global Challenges 1, 2 (DC)	WHS	Science/CTE	9 – 12	SCI611	SCI612
Intro to Engineering Design 1, 2 (DC)	FPHS, WHS	Math (3rd Year)/CTE	9 – 12	TEC111	TEC112
Robotics Technology	FPHS, WHS	CTE	9 – 12	TEC115	
CTE-Skilled and Technical Sciences					
AFJROTC Drill and Ceremonies	WHS	Art/PE/CTE	9 – 12	FLT611	
AFJROTC Management of the Cadet Corps and Leadership 1, 2 (AS400/LE400) *	WHS	CTE	12	FLT413	FLT414
AFJROTC Milestone into Aviation History and Leadership 1, 2 (AS100/LE100)	WHS	CTE	9 – 12	FLT111	FLT112

AFJROTC Survival: Survive & Return and Leadership 1, 2 (AS410/LE300) *	WHS	CTE	10 – 12	FLT313	FLT314
AFJROTC The Science of Flight: A Gateway to New Horizons and Leadership 1, 2 (AS200/LE300) *	WHS	CTE	10 – 12	FLT212	FLT213
AP Art and Design 1, 2 (DC Exam)	WHS	Art/CTE	10 – 12	FNA131	FNA132
Community Art (DC)	FPHS, WHS	Arts	10 – 12	FNA133	
Construction Trades 1, 2 (daily within one semester) (DC) *	WHS	Math (3rd Year)/CTE	10 – 12	ARC111	ARC112
Digital Photography Advanced	WHS	Art/CTE	9 – 12	ATC302	
Digital Photography Beginning (DC)	FPHS, WHS	Art/CTE	9 – 12	ATC301	
Glass Art Advanced	FPHS	Art/CTE	9 – 12	FNA114	
Glass Art Beginning	FPHS	Art/CTE	9 – 12	FNA113	
Graphic Design (DC)	FPHS, WHS	Art/CTE	9 – 12	ATC321	
Pottery Advanced	FPHS, WHS	Art/CTE	9 – 12	FNA118	
Pottery Beginning	FPHS, WHS	Art/CTE	9 – 12	FNA117	
Screen Printing Advanced (DC)	WHS	Art/CTE	9 – 12	FNA125	
Screen Printing Beginning (DC)	WHS	Art/CTE	9 – 12	FNA115	
Video Editing 1, 2 (DC)	FPHS, WHS	Art/CTE	9 – 12	ATC211	ATC212
Video Production 1, 2 (DC)	WHS	Art/CTE	9 – 12	ATC221	ATC222
Visual Art & Design (DC)	FPHS, WHS	Art/CTE	9 – 12	FNA111	
English Language Arts (ELA)					
AP Lang. & Compstn 1, 2 (DC Exam)	FPHS	English	11	ENG331	ENG332
AP Lit. & Composition 1, 2 (DC Exam)	FPHS	English	12	ENG431	ENG432
Bridge to College English 1, 2	FPHS, WHS	English	12	ENG423	ENG424
Bridge to College English Prep 1, 2	WHS	English	11	ENG323	EMG324
Cllg Comp: Expos & Arg 1, 2 (DC CHS)	FPHS, WHS	English	11 – 12	ENG433	ENG434
Creative Writing	FPHS	Elective	11 – 12	ENG611	
Engl Composition Lit 1, 2 (DC CHS)	FPHS	English	12	ENG435	ENG436
Food Justice in Action (2 period daily class) (DC) *	FPHS, WHS	Science(1) & CTE(2) & English(1)	10 – 12	SCI651	SCI652
Freshman English 1, 2	FPHS, WHS	English	9	ENG111	ENG112
Freshman English Advanced 1, 2	FPHS, WHS	English	9	ENG 121	ENG122
Freshman Language Arts 1, 2 (IEP)	FPHS, WHS	English	9	ENG101	ENG102
Intro to Literature 1, 2 (DC CHS)	FPHS, WHS	English	11 – 12	ENG437	ENG438

Junior English 1, 2	FPHS	English	11	ENG311	ENG312
Junior Language Arts 1, 2 (IEP)	FPHS, WHS	English	11	ENG301	ENG302
Reading Lab 1, 2 (IEP)	FPHS, WHS	English	9 - 12	ENG501	ENG502
Senior Language Arts 1, 2 (IEP)	FPHS, WHS	English	12	ENG401	ENG402
Sophomore English 1, 2	FPHS, WHS	English	10	ENG211	ENG212
Sophomore English Advanced 1, 2	FPHS, WHS	English	10	ENG221	ENG222
Sophomore Language Arts 1, 2 (IEP)	FPHS, WHS	English	10	ENG201	ENG202
World Mythology	FPHS	Elective	11 – 12	ENG613	
English Language Learning					
Beginning English	FPHS, WHS	Elective	9 – 12	ELE501	ELE502
Academic Language Development	FPHS, WHS	Elective	9 – 12	ELE503	ELE504
Health & Fitness					
Family Health *	FPHS, WHS	Health/CTE	9 - 12	HPE111	
Fitness Specialist 1, 2 (DC) *	FPHS	PE/CTE	11 – 12	HPE211	HPE212
Intro to PE	FPHS, WHS	PE	9	HPE112	
Individual & Dual Sports	FPHS	PE	10 – 12	HPE114	
Lifetime Fitness	FPHS	PE	10 – 12	HPE116	
PE Advanced	FPHS, WHS	PE	10 – 12	HPE122	
Principles of Biomedical Science 1, 2 (DC)	FPHS	Health/CTE/Science	9 – 12	SCI115	SCI116
Strength Training	FPHS	PE	10 – 12	HPE115	
Team Sports	FPHS	PE	10 – 12	HPE118	
Unified PE	FPHS, WHS	PE	9 – 12	HPE100	
AFJROTC Drill and Ceremonies	WHS	Art/PE/CTE	9 – 12	FLT611	
Mathematics					
Aerospace Manufacturing 1, 2 *	FPHS, WHS	Math (3rd year)/CTE	10 – 12	TEC213	TEC214
Aerospace Manufacturing 3, 4 *	FPHS, WHS	Math (3rd year)/CTE	11 – 12	TEC313	TEC314
Algebra I 1, 2	FPHS, WHS	Math	9 – 12	MTH111	MTH112
Algebra II 1, 2	FPHS, WHS	Math	9 – 12	MTH311	MTH312
Algebra II, Modern 1, 2	FPHS, WHS	Math	9 – 12	MTH315	MTH316
Algebra II Advanced 1, 2	FPHS	Math	9 – 10	MTH321	MTH322
AP Calculus A/B 1, 2 (DC Exam)	FPHS, WHS	Math	11 – 12	MTH631	MTH632

AP Calculus B/C 1, 2 (DC Exam)	FPHS, WHS	Math	12	MTH633	MTH634
AP Computer Science 1, 2 (DC Exam)	FPHS, WHS	Math (3rd year)/CTE	10 – 12	TEC231	TEC232
AP Statistics 1, 2 (DC Exam)	WHS	Math	12	MTH635	MTH636
Basic Math 1, 2 (IEP)	FPHS, WHS	Math	9 – 12	MTH101	MTH102
Basic Math 3, 4 (IEP)	FPHS, WHS	Math	9 – 12	MTH201	MTH202
Bridge to College Mathematics 1, 2	FPHS, WHS	Math	12	MTH423	MTH424
Calculus I (DC CHS)	FPHS	Math	11 – 12	MTH641	MTH642
Construction Trades (daily within one semester) (DC) *	WHS	Math (3rd year)/CTE	10 – 12	ARC111	ARC112
Consumer Math 1, 2 (IEP)	FPHS, WHS	Math	11 – 12	MTH601	MTH602
Financial Literacy 1, 2 (DC)	FPHS, WHS	Math (3rd year)/CTE	11 – 12	BUS211	BUS212
Geometry 1, 2	FPHS, WHS	Math	9 – 12	MTH211	MTH212
Geometry Advanced 1, 2	FPHS	Math	9, 10	MTH221	MTH222
Intro to Computer Science 1, 2 (DC)	FPHS, WHS	Math (3rd year)/CTE	9 – 12	TEC113	TEC114
Intro to Engineering Design (DC)	FPHS, WHS	Math (3rd year)/CTE	9 – 12	TEC111	TEC112
Pre-Algebra 1, 2 (IEP)	FPHS, WHS	Math	9 – 12	MTH301	MTH302
Pre-Algebra 3, 4 (IEP)	FPHS, WHS	Math	9 – 12	MTH401	MTH402
Pre-Calculus 1, 2	FPHS, WHS	Math	10 – 12	MTH411	MTH412
Pre-Calculus, UW (DC CHS)	FPHS	Math	10 – 12	MTH421	MTH422
Statistics 1, 2	FPHS, WHS	Math (3rd Year)	10 – 12	MTH413	MTH414
Stats, Society, & Decisions (DC CHS)	FPHS	Math	12	MTH645	MTH646
Science (All courses are lab science unless designated an elective)					
AP Biology 1, 2 (DC Exam)	FPHS, WHS	Science	10 – 12	SCI131	SCI132
AP Chemistry 1, 2 (DC Exam)	FPHS, WHS	Science	11 – 12	SCI331	SCI332
AP Environmental Sci 1, 2 (DC Exam)	FPHS	Science	12	SCI433	SCI434
AP Physics (DC Exam)	FPHS	Science	12	SCI431	SCI432
Astronomy	FPHS	Elective	11 – 12	SCI635	
Biology 1, 2	FPHS, WHS	Science	9	SCI111	SCI112
Biology Advanced	FPHS, WHS	Science	9	SCI121	SCI122
Biomedical Innovation 1, 2	FPHS, WHS	Science/CTE	11 – 12	SCI415	SCI416
Chemistry 1, 2	FPHS, WHS	Science	10 – 12	SCI311	SCI312
Chemistry Advanced 1,2	FPHS, WHS	Science	11	SCI321	SCI322

ECO System Design 1, 2 (2 period block class) (DC) *	FPHS, WHS	Science (1) & CTE (1)	9 - 12	SCI621	SCI622
Food Justice in Action (2 period daily class) (DC) *	FPHS, WHS	Science(1) & CTE(2) & English(1)	10 - 12	SCI651	SCI652
Forensic Science 1, 2	FPHS	Science	10 - 12	SCI641	SCI642
Global Challenges 1, 2 (DC)	WHS	Science/CTE	9 - 12	SCI611	SCI612
Human Body Systems 1, 2 (DC)	FPHS, WHS	Science/CTE	10 - 12	SCI215	SCI216
Marine Biology	FPHS	Elective	11 - 12	SCI633	
Medical Interventions 1, 2 (DC)	FPHS, WHS	Science/CTE	11 - 12	SCI315	SCI316
Physics 1, 2	FPHS, WHS	Science	12	SCI411	SCI412
Physical Science 1, 2	FPHS, WHS	Science	10	SCI211	SCI212
Physical Science Advanced 1, 2	FPHS, WHS	Science	9	SCI221	SCI222
Principles of Biomedical Science 1, 2 (DC)	FPHS	Health/CTE/Science	9 - 12	SCI115	SCI116
Restoration Ecology (DC)	WHS	Science/CTE	9 - 12	SCI627	
Science Research	WHS	Science	9 - 12	SCI625	SCI626
Social Studies					
AP Psychology 1, 2 (DC Exam)	FPHS, WHS	Elective	11 - 12	SST633	SST634
AP U.S. Gov. & Politics 1, 2 (DC Exam)	FPHS, WHS	Social Studies	12	SST431	SST432
AP Human Geography (DC Exam)	FPHS	Elective	9	SST131	SST132
AP World History 1, 2 (DC Exam)	FPHS, WHS	Social Studies	10	SST231	SST232
Civics	FPHS, WHS	Social Studies	12	SST411	
Contemporary World Problems	FPHS, WHS	Social Studies	12	SST412	
Ethnic Studies I	FPHS, WHS	Social Studies	11 - 12	SST617	
Ethnic Studies II	FPHS, WHS	Elective	12	SST618	
Intro to Psychology	WHS	Elective	9 - 10	SST630	
Sociology 1, 2	FPHS	Elective	10 - 12	SST615	SST616
Street Law	FPHS	Elective	12	SST911	
U.S. History 1, 2	FPHS, WHS	Social Studies	11	SST311	SST312
U.S. Hist to 1877 (DC CHS)	FPHS, WHS	Social Studies	11	SST333	
U.S. Hist Since 1877 (DC CHS)	FPHS, WHS	Social Studies	11		SST334
Washington State History	FPHS, WHS	Social Studies	9 - 12	SST611	
World History 1, 2	FPHS, WHS(1)	Social Studies	9 - 10	SST211	SST212
WH From 1500 1, 2 (DC CHS)	WHS	Social Studies	10	SST233	SST234

WH Topics: Hist of Asia & Pacific Isls	WHS	Social Studies	9 – 10	SST213	
WH Topics: Latin American History	WHS	Social Studies	9 – 10	SST214	
Special Education (Coursework determined by IEP)					
Basic Math 1, 2	FPHS, WHS	Math	9 – 12	MTH101	MTH102
Basic Math 3, 4	FPHS, WHS	Math	9 – 12	MTH201	MTH202
Community Based Learning 1, 2	FPHS, WHS	Elective	10 – 12	ELE301	ELE302
Consumer Math 1, 2	FPHS/WHS	Math	11 – 12	MTH601	MTH602
Freshman Language Arts 1, 2	FPHS, WHS	English	9	ENG101	ENG102
Junior Language Arts 1, 2	FPHS, WHS	English	11	ENG301	ENG302
Learning Strategies 1, 2	FPHS, WHS	Elective	9 – 10	ELE103	ELE104
Learning Strategies Advanced 1, 2	FPHS, WHS	Elective	11 – 12	ELE105	ELE106
Pre-Algebra 1, 2	FPHS, WHS	Math	9 – 12	MTH301	MTH302
Pre-Algebra 3, 4	FPHS, WHS	Math	9 – 12	MTH401	MTH402
Reading Lab 1, 2	FPHS, WHS	English	9 - 12	ENG501	ENG502
Senior Language Arts 1, 2	FPHS, WHS	English	12	ENG401	ENG402
Sophomore Language Arts 1, 2	FPHS, WHS	English	10	ENG201	ENG202
Support Center I 1, 2	FPHS, WHS	Elective	9 – 12	ELE201	ELE202
Support Center II 1, 2	FPHS, WHS	Elective	11 – 12+	ELE203	ELE204
Tools for Success 1, 2	FPHS, WHS	Elective	9 – 12	ELE101	ELE102
World Languages					
AP Spanish Language 1, 2 (DC Exam)	FPHS, WHS	World Language	10 – 12	WRL231	WRL232
American Sign Language 1, 2 (DC)	FPHS, WHS	World Language/CTE	9 – 12	WRL111	WRL112
American Sign Language 3,4	FPHS, WHS	World Language/CTE	10 – 12	WRL113	WRL114
American Sign Language 5,6	WHS	World Language/CTE	11 – 12	WRL115	WRL116
Japanese 1, 2	FPHS, WHS	World Language	9 – 12	WRL121	WRL122
Spanish 1, 2	FPHS, WHS	World Language	9 – 12	WRL101	WRL102
Spanish 3, 4	FPHS, WHS	World Language	10 – 12	WRL103	WRL104
Spanish 5, 6	FPHS, WHS	World Language	11 – 12	WRL105	WRL106
Spanish for Native Speakers 1, 2	FPHS	World Language	9 – 12	WRL201	WRL202

Additional Electives					
AVID 1, 2	FPHS, WHS	Elective	9 – 12	9=ELE123 10=ELE223 11=ELE323 12=ELE423	9=ELE124 10=ELE224 11=ELE324 12=ELE424
Counseling & Career Center Assistant	FPHS, WHS	Elective	11 – 12	CIE103	CIE104
Leadership 1, 2	FPHS, WHS	Elective	9 – 12	ELE231	ELE232
Leadership Advanced 3, 4 (DC CHS)	WHS	Elective	12	ELE435	ELE436
Leadership Theory (DC CHS)	FPHS	Elective	11 – 12	ELE437	
Library Assistant	FPHS, WHS	Elective	11 – 12	CIE105	CIE106
Main Office Assistant	FPHS, WHS	Elective	11 – 12	CIE101	CIE102
Restorative Practices & Advocacy	WHS	Elective	10 – 12	ELE130	
Restorative Center	WHS	Elective	10 – 12	ELE233	ELE234
Teacher Assistant	FPHS, WHS	Elective	11 – 12	CIE107	CIE108

DC Dual Credit
*Industry Recognized Certificate

COURSE DESCRIPTIONS

The Arts

Performing Arts

Drama

Semester, Grades 9, 10, 11, 12

Course Number: FNA211

Dual Credit: No

Graduation Requirement: Arts

Prerequisites: None

This introductory acting class explores theatre performance techniques and script analysis. This course is intended to develop acting skills and build upon the fundamentals of public speaking. The specific goal of this course is to develop skills in portraying characters on stage through their relationships to one another and to their environments. Students mainly perform in group scenes from various plays with a strong emphasis on learning the basics of speaking in front of audiences. Emphasis is also placed on research and the analysis of play scripts to discover details of the environment, action, and intentions of the characters.

Advanced Drama 1&2 (WHS Only)

Full Year, Grades 10, 11, 12

Course Number: FNA213/214

Dual Credit: No

Graduation Requirement: Arts

Prerequisites: Teacher permission

This course is designed for students who want to experience the process of creating a production. Students focus on methods of acting, technical theater, advertising, and promotion, as well as certain design elements such as costuming and set design. The school play is rehearsed during this class. Enrollment in this course requires after school rehearsals, and some Saturday rehearsals.

Beginning Choir 1&2 (FPHS Only)

Full year, Grades 9, 10, 11, 12

Course Number: FNA301/302

Dual Credit: No

Graduation requirement: Arts

Prerequisites: None

This large vocal ensemble is open to all freshmen and/or first-year singers capable of matching pitch. Course content includes training in basic vocal production, concert preparation and performance, sight singing, ear training, and music theory. Some costs may be expected for uniforms or travel. Performances are required.

Intermediate Choir 1&2

Full year, Grades 9, 10, 11, 12

Course Number: FNA313/314

Dual Credit: No

Graduation requirement: Arts

Prerequisites: Previous Middle School, High School, or community choral experience. (Audition and teacher permission required at FPHS.)

Intermediate Choir 1-2 is a performance-based course for vocalists. Students learn intermediate and advanced vocal techniques involved in the performance of various styles of music. Students prepare and perform soprano and alto literature in all styles, as soloists and with others. Members of the group are expected to attend after school/evening commitments (rehearsals/concerts/contests/special events)

throughout the year at the school and in the community. Fees: Uniforms are determined and purchased by students each year.

Advanced Choir 1&2

Full year, Grades 10, 11, 12

Course Number: FNA315/316

Dual Credit: No

Graduation requirement: Arts

Prerequisites: Intermediate Choir and teacher permission.

Advanced Choir 1-2 is a performance-based course for vocalists. Students learn intermediate and advanced vocal techniques and choreography involved in the performance of assorted styles of music. Students should be comfortable singing a solo melodic line alone and with others, harmonizing with ensemble members, and be capable of light/moderate physical activity while singing. Students may take on a leadership role as section leader or assistant director. Members of the group are expected to attend after school/evening commitments (rehearsals/concerts/contests/special events) throughout the year at the school and in the community. Fees: Uniforms are determined and purchased by students each year.

Jazz Choir 1, 2 (FPHS only)

Full year, Grades 10, 11, 12

Course Number: FNA325/326

Dual Credit: No

Graduation requirement: Arts

Prerequisites: Concurrent enrollment in advanced choir and audition required.

Jazz Choir is open, by audition, to 10-12 students also enrolled in Advanced Choir. This class explores the jazz style through learning basic jazz techniques, rehearsal, and performance. Included are elements of ear training, sight singing, and music theory. Some extra costs may be expected for travel and uniforms. Performances are required.

Concert Band 1&2

Full Year, Grades 9, 10, 11, 12

Course number: FNA411/412

Dual Credit: No

Graduation Requirement: Arts

Prerequisites: Prior experience on a band instrument. All other students, teacher permission required.

Concert Band is a non-audition group that focuses on the basics of technique, tone production, ensemble performance, and individual study. Through rigorous rehearsals and practices, students gain valuable experience on their instruments, learn teamwork, and gain self-confidence through performance. Concert Band members are required to attend all Pep Band functions including all school assemblies, football games, eight basketball games, and the Daffodil Parade.

Symphonic Band 1&2 (FPHS only)

Full Year, Grades 9, 10, 11, 12

Course number: FNA413/414

Dual Credit: No

Graduation Requirement: Arts

Prerequisites: Prior experience on a band instrument. All other students, teacher permission required.

Symphonic Band is an audition group that focuses on more advanced technique, tone production, ensemble performance, and individual study. Through rigorous rehearsals and practices, students gain valuable experience on their instruments, learn teamwork, and gain self-confidence through performance. Symphonic Band members are required to attend all Pep Band functions including all school assemblies, football games, eight basketball games, and the Daffodil Parade.

Instrumental Jazz Ensemble 1&2

Full year, Grades 9, 10, 11, 12

Course Number: FNA419/420

Dual Credit: No

Graduation requirement: Arts

Prerequisites: Audition and teacher permission required; concurrent enrollment in Symphonic or Concert Band at FPHS; Wind or Percussion Ensemble at WHS.

Students learn the basics of jazz music through performance in a full-sized jazz ensemble with a focus on jazz articulation, improvisation, jazz styles, and jazz theory. Students must audition for the course and there are a limited number of open spots. This ensemble has a more rigorous performance schedule than other ensembles. Students must be able to commit to the performance schedule or arrange absences with the teacher to succeed in the class.

Fees: Students are responsible for uniform costs (i.e. concert black uniform, dress shoes) and equipment costs (i.e. reeds, sticks, mallets). School instruments are available at no charge.

Drumline for Beginners (FPHS only)

Semester, Grades 9, 10, 11, 12

Course number: FNA567

Dual Credit: No

Graduation Requirement: Arts

Prerequisites: None

This class is intended for students who have no experience in music and who desire to learn about the basics of drumming. Students learn how to be part of an ensemble, learn teamwork, strategies for personal practice, and grow musically through performance experiences. Students should expect to purchase drumsticks to participate in class.

Percussion Ensemble 1&2 (WHS only)

Full year, Grades 9, 10, 11, 12

Course Number: FNA427/428

Course Number: FNA 417/418 Beginning

Dual Credit: No

Graduation requirement: Arts

Prerequisites: Open to all students by audition/teacher approval. Audition materials are available from the director.

This performance-based course is for percussion students only. Students learn intermediate and advanced techniques on all percussion instruments. Members of this group are considered members of the Wind Ensemble, Concert and Symphonic Bands, Pep Band, Marching Band, and Drum Line - and are expected to attend summer band camp as well as after school/evening performances (Concerts, Football/Basketball Games, and Parades) throughout the year. Fees: Students are responsible for uniform costs (i.e. concert black uniform, dress shoes) and instrument costs (i.e. drumsticks, mallets, stick bag).

Percussion Ensemble 1&2 Advanced

Full year, Grades 9, 10, 11, 12

Course Number: FNA 437/438

Dual Credit: No

Graduation requirement: Arts

Prerequisites: Open to all students by audition/teacher approval. Audition materials are available from the director.

This performance-based course is for percussion students only. Students learn intermediate and advanced techniques on all percussion instruments. Members of this group are considered members of the Wind Ensemble, Concert and Symphonic Bands, Pep Band, Marching Band, and Drum Line - and are expected to attend summer band camp as well as after school/evening performances (Concerts, Football/Basketball Games, and Parades) throughout the year. Fees: Students are responsible for uniform costs (i.e. concert black uniform, dress shoes) and instrument costs (i.e. drumsticks, mallets, stick bag). This course replaces Advanced Drumline at FPHS.

Steel Drum Ensemble Beginning 1&2 (WHS Only)

Full year, Grades 9, 10, 11, 12

Course Number: FNA611/612

Dual Credit: No

Graduation requirement: Arts

Prerequisites: Previous music experience not required but preferred.

This performance-based course teaches the basics of steel drums including reading music (notes and rhythms), sticking, concert preparation and performances. Members are required to attend all performances of the ensemble (i.e. concerts, community events, assemblies), most of which take place in the evening. Students are graded individually.

Steel Drum Ensemble Advanced 1&2 (WHS Only)

Semester, Grades 10, 11, 12

Course Number: FNA621/622

Dual Credit: No

Graduation requirement: Arts

Prerequisites: One year of steel drums and/or audition with the teacher.

This performance-based course is designed to continue teaching the basics of steel drums including reading music (notes and rhythms), sticking, concert preparation and performances with additional focus on music theory, soloing, and composition. Members are required to attend all performances of the ensemble (i.e. concerts, community events, assemblies), most of which take place in the evening. Students are given plenty of advance notice regarding performances. Students will be graded individually.

Wind Ensemble 1&2 (WHS Only)

Full year; Grades 9, 10, 11, 12

Course Number: FNA415/416

Dual Credit: No

Graduation requirement: Arts

Prerequisites: Open to all students by audition/teacher approval. Audition materials are available from the director.

This performance-based course is for brass/woodwind students only. The course teaches advanced instrumental technique on woodwind and brass instruments. Members of this group are also considered members of the Prep Marching Band and will be expected to attend summer band camp as well as after school/evening commitments (rehearsals, concerts, football and basketball games, parades) throughout the year. Fees: Students are responsible for uniform costs (i.e., concert black uniform, dress shoes) and instrument costs (i.e., reeds, supplies).

World Music Ensemble (FPHS only)

Semester, Grades 9, 10, 11, 12

Course number: FNA603

Dual Credit: No

Graduation Requirement: Arts

Prerequisites: None

The WME is a multicultural ensemble with a foundation in world music drumming. Students explore percussion, singing, and dance from a variety of cultures across the globe. Coursework is influenced by student interests and backgrounds. No prior musical experience is required, but ensemble members are expected to exhibit enthusiasm, respect for other cultures, and a willingness to try new things.

WME will perform several times throughout the year.

History of Classical Music

Semester, Grades 9, 10, 11, 12

Course Number: FNA575

Dual Credit: No

Graduation requirement: Arts

Prerequisites: None

Music of the Western Worlds focuses on how music has affected culture and society throughout history. Students survey classical music from the Middle Ages to the Romantic Era (up to the 20th century). Students also relate their own musical experiences to music history and learn how they are personally affected by music. No prior musical experience is required to succeed in this class. Students develop an appreciation for a range of styles of music through a rigorous listening regimen. Students may take this course on its own or in a sequence with The History of Rock and Roll.

The History of Rock and Roll

Semester, Grades 9, 10, 11, 12

Course Number: FNA571

Dual Credit: No

Graduation requirement: Arts

Prerequisites: None

The History of Rock and Roll focuses on how music has affected culture and society throughout history. Students learn about all major areas of modern Rock and Roll music from the 1940's to the present. Students also relate their own musical experiences to music history and learn how they are personally affected by music. No prior musical experience is required to succeed in this class. Students develop an appreciation for a range of styles of music through a rigorous listening regimen.

Guitar Beginning (FPHS only)

Semester, Grades 9, 10, 11, 12

Course number: FNA615

Dual Credit: No

Graduation Requirement: Arts

Prerequisites: None

In Beginning Guitar, students learn basic notes and chords for guitar or ukulele. After mastering these, students learn simple folk songs and twelve bar blues. Required equipment is an acoustic guitar or ukulele and a notebook for music. School instruments are available at no charge.

Piano/Keyboarding Beginning (WHS Only)

Semester, Grades 9, 10, 11, 12

Course Number: FNA601

Dual Credit: No

Graduation requirement: Arts

Prerequisites: None

Keyboard class focuses on learning how to play notes, rhythms and chords using modern styles such as pop and rock music. Students learn how to use an electric keyboard as the basis for a modern music ensemble. Students gain an understanding of how electric keyboards function in today's musical styles. No prior musical experience is required to succeed in this class. Performances are considered for assemblies, concerts, or community events.

Ukulele (WHS Only)

Semester, Grades 9, 10, 11, 12

Course Number: FNA617

Dual Credit: No

Graduation requirement: Arts

Prerequisites: None

This course includes introductory through intermediate ukulele playing techniques. Students study open chords, barre chords, finger-picking and common strum patterns, reading chords, and tablature. Playing tests are a part of the course curriculum and solo opportunities are offered to students interested in performing individually. Performances are considered for assemblies, concerts, and community events. Beginners are welcome and are matched with more experienced players as peer tutors. All materials are provided.

Technical & Visual Arts

AFJROTC Drill and Ceremonies (WHS only)

Semester, Grades 9, 10, 11, 12

Course Number: FLT611

Dual Credit: No

Graduation Requirement: CTE, Physical Education, Arts

Prerequisites: Must currently be enrolled in an AFJROTC academic course.

CTE Program Area: Skilled and Technical Sciences

In Drill and Ceremonies students learn advanced drill & ceremonies and creatively develop exhibition drill maneuvers in preparation for several performances throughout the year. Students compete and are judged at

Northwest Drill & Rifle League competitions. Students already enrolled in AFJROTC may also take this zero-hour course.

AP Art and Design 1&2

Full Year, Grades 10, 11, 12

Course Number: FNA131/132

Dual Credit: Yes – Credit by Exam & CTE Dual Credit

Graduation Requirement: Arts, CTE

Prerequisites: Teacher permission required.

CTE Program Area: Skilled and Technical Sciences

AP Art and Design 1&2 provides students with a learning experience equivalent to that of an introductory college course in studio art foundations. In this course students focus on career exploration in the fields of Design and Professional Production Arts. This course focuses on the theories, methods and techniques and must include the areas of glass, metal, ceramic, wood, polymers, and mixed media. This includes instruction in core art standards, design, concepts sketching, technical drawing, and color theory. Students create a portfolio of work in at least one of three areas of study: Drawing, 2-D Design, or 3-D design. This body of work can be used to meet college admission portfolio requirements and will be assessed by the College Board for Advanced Placement, in lieu of an examination. Students who earn a grade of 'C' (2.0) or better in this course can earn college credit.

Community Art

Semester, Grades 10, 11, 12

Course Number: FNA133

Dual Credit: Yes – CTE Dual Credit

Graduation Requirement: Arts, CTE

Prerequisites: B or better in any entry level art class (Visual Art and Design, Glass Art Beginning, Pottery, Graphic Design, Photography, Yearbook)

CTE Program Area: Skilled and Technical Sciences

Community Art develops skills to create a wide range of visual art designed for the school and broader community. Students design and work together to create public artworks ranging from murals to installations and community art projects. Students learn how artists get funding and approval for community projects and will learn to write art proposals. Students use and develop their art skills and interests, exploring a variety of art media, including drawing, painting, sculpture, photography, and digital artwork.

Digital Photography Beginning

Semester, Grades 9, 10, 11, 12

Course Number: ATC301

Dual Credit: Yes – CTE Dual Credit

Graduation Requirement: Arts, CTE

Prerequisites: None

CTE Program Area: Skilled and Technical Sciences

Beginning Digital Photography focuses on career exploration in the fields of photography. The course includes basic theories, methods and techniques used to plan, produce, and distribute photos. Includes instruction in lighting, camera options, composition, production preparation, and related computer applications. Students who earn a grade of 'C' (2.0) or better in this course can earn college credit.

Digital Photography Advanced

Semester, Grades 9, 10, 11, 12

Course Number: ATC302

Dual Credit: No

Graduation Requirement: Arts, CTE

Prerequisites: Digital Photography Beginning

CTE Program Area: Skilled and Technical Sciences

Advanced Digital Photography prepares students to use computer applications and related visual imaging and editing techniques to manipulate images and information originating as digital, still photographs, digital copy, and physical objects in order to communicate messages simulating real-world content. Includes instruction in specialized camerawork and equipment operation and maintenance, image capture, lighting,

software applications, and applications to specific commercial, industrial, and entertainment needs. Students who earn a grade of 'C' (2.0) or better in this course can earn college credit.

Glass Art Beginning (FPHS only)

Semester, Grades 9, 10, 11, 12

Course Number: FNA113

Dual Credit: No

Graduation Requirement: Arts, CTE

Prerequisites: None

CTE Program Area: Skilled and Technical Sciences

Beginning Glass Art prepares students to apply knowledge and technical skills in creating, producing, and selling products in the fields of glass and mixed media. Instruction includes art theory, design, safety, technical skills, production skills and marketing, sales, entrepreneurship, and management functions associated with operating a small business in professional arts.

Glass Art Advanced (FPHS only)

Semester, Grades 9, 10, 11, 12

Course Number: FNA114

Dual Credit: No

Graduation Requirement: Arts, CTE

Prerequisites: Glass Art Beginning or teacher permission.

CTE Program Area: Skilled and Technical Sciences

Advanced Glass Art develops personal expression through glass art. Students design their own artworks, determining the best media and techniques to communicate their ideas to further develop their artistic style expanding their glass art portfolio. Instruction includes project planning, art analyses, and critiques.

Graphic Design

Semester, Grades 9, 10, 11, 12

Course Number: ATC321

Dual Credit: Yes – CTE Dual Credit

Graduation Requirement: Arts, CTE

Prerequisites: None

CTE Program Area: Skilled and Technical Sciences

Graphic Design develops digital artwork skills. Using Adobe Photoshop, Illustrator and InDesign students will create works of art that are meaningful and personal. Learn the principles of design and art elements while gaining skills that make you employable. Students are exposed to the entire creative process from concept sketches to layout requirements for printing. Students who earn a grade of 'C' (2.0) or better in this course can earn college credit.

Pottery Beginning

Semester Grades 9, 10, 11, 12

Course Number: FNA117

Dual Credit: No

Graduation Requirement: Arts, CTE

Prerequisites: None

CTE Program Area: Skilled and Technical Sciences

This course teaches the fundamentals of Pottery. Students learn pottery and sculpture using hand building techniques. Some wheel throwing techniques are explored. Students learn finishing techniques in firing and glazing. Artistic style and ideas are developed while applying the elements of art and principles and design. Historical and contemporary pottery/ceramics are studied as students build their skills, understanding and practice their visual literacy.

Pottery Advanced

Semester, Grades 9, 10, 11, 12

Course Number: FNA118

Graduation Requirement: Arts, CTE

Dual Credit: No

Prerequisites: Pottery

CTE Program Area: Skilled and Technical Sciences

Advanced Pottery expands upon the fundamentals learned in Pottery. Students will increase their knowledge of pottery, sculpture, and complex hand building techniques. Wheel throwing techniques will be reintroduced and elevated. Students learn advanced finishing techniques in firing and glazing. Artistic style and ideas are developed while applying the Elements of Art and Principles of Design. Students will learn Advanced Ceramic Relief. Historical and contemporary pottery/ceramics are studied as students build their skills, understanding and practice their visual literacy.

Screen Printing Beginning (WHS Only)

Semester, Grades 9, 10, 11, 12

Course Number: FNA115

Dual Credit: Yes – CTE Dual Credit

Graduation Requirement: Arts, CTE

Prerequisites: None

CTE Program Area: Skilled and Technical Sciences

Beginning Screen Printing introduces the screen-printing trade that generally prepares students to apply technical knowledge and skills to plan, prepare, and execute a variety of commercial and industrial graphic communication jobs. A combination of technical laboratory applications and theory provide the foundation for this course. Students will produce a final project by designing and printing their own T-shirt. Students who earn a grade of 'C' (2.0) or better in this course can earn college credit.

Screen Printing Advanced (WHS only)

Semester, Grades 9, 10, 11, 12

Course Number: FNA125

Dual Credit: Yes – CTE Dual Credit

Graduation Requirement: Arts, CTE

Prerequisites: Screen Printing Beginning or teacher permission.

CTE Program Area: Skilled and Technical Sciences

Advanced Screen Printing builds on the basic concepts in screen-printing learned in the Beginning Screen Printing course. Advanced students run the Patriot Screen Print Shop with the goal of having a website and controlling merchandise that is sold at the school store. Students who earn a grade of 'C' (2.0) or better in this course can earn college credit.

Technology Exploration 1&2 (FPHS only)

Full Year, Grades 9, 10, 11, 12

Course Number: ATC311/312

Dual Credit: Yes – CTE Dual Credit

Graduation Requirement: Arts, CTE

Prerequisites: None

CTE Program Area: Business and Marketing

Technology Exploration 1&2 explores the basics of digital photography as well as basic design principles using Photoshop and InDesign and computer science skills. Students learn Microsoft Word and Microsoft PowerPoint with the opportunity to earn industry certification. Students who earn a grade of 'C' (2.0) or better in this course can earn college credit. *Industry Recognized Credential: Microsoft Office Specialist (MOS).*

Unified Arts

Semester, Grades 10, 11, 12

Course Number: FNA100

Dual Credit: No

Graduation Requirement: Arts

Prerequisites: Teacher approval for neurotypical peer students

This visual art class centers around students with varied abilities. Students will learn about all seven elements of art and the principles of design. Students will also learn the basics of calligraphy, cursive, drawing, painting, and other projects tailored to students' specific needs. Students will work together and on their own. Neurotypical students need teacher approval before being added to the class.

Video Editing 1&2

Full Year, Grades 9, 10, 11, 12

Course Number: ATC211/212

Dual Credit: Yes – CTE Dual Credit

Graduation Requirement: Arts, CTE

Prerequisites: None

CTE Program Area: Skilled and Technical Sciences

Video Editing 1&2 is a performance-based class for students interested in the television, film, or video production industries. Coursework includes practical experience shooting and editing videos. The course includes instruction script writing, sound, lighting, camera operations; production preparation; related computer applications; and specialized applications such as news, entertainment, live talk, sports, commercial and corporate production. Students who earn a grade of 'B' (3.0) or better in this course can earn college credit.

Video Production 1&2

Full Year, Grades 9, 10, 11, 12

Course Number: ATC221/222

Dual Credit: Yes – CTE Dual Credit

Graduation Requirement: Arts, CTE

Prerequisites: None

CTE Program Area: Skilled and Technical Sciences

Video Production 1&2 prepares students to apply technical knowledge and skills to the production of video as it relates to the television, film, or video production industries. The course includes instruction script writing, sound, lighting, camera operations and maintenance; operations; production preparation; related computer applications; and specialized applications such as news, entertainment, live talk, sports, commercial and corporate production. Students who earn a grade of 'B' (3.0) or better in this course can earn college credit.

Visual Art and Design

Semester, Grades 9, 10, 11, 12

Course Number: FNA111

Dual Credit: Yes – CTE Dual Credit

Graduation Requirement: Arts, CTE

Prerequisites: None

CTE Program Area: Skilled and Technical Sciences

Visual Art and Design explores a variety of two-dimensional art media including a variety of types and styles of drawing and painting. Students may build on skills and concepts learned in middle school art classes or may be learning art skills and concepts for the first time. The focus of the course is on producing artwork with a range of media, techniques, and styles. The course also begins to explore art history, art criticism, and aesthetics. There is a focus on art skills that transfer to careers in the arts. Students who earn a grade of 'C' (2.0) or better in this course can earn college credit.

Yearbook 1&2

Full Year, Grades 10, 11, 12

Course Number: ATC401/402

Dual Credit: Yes – CTE Dual Credit

Graduation Requirement: Arts, CTE

Prerequisites: Digital Photography, Graphic Design or teacher permission.

CTE Program Area: Business and Marketing

Yearbook 1&2 develops a creative theme and designs the school's yearbook. Students will apply technical knowledge and skills to the layout, design and publication. All phases of publication including copy writing, layout, and photography are covered by applying sophisticated computer technology to contemporary design. Students will be required to work outside of class time to meet publishing deadlines. Students who earn a grade of 'C' (2.0) or better in this course can earn college credit.

Career and Technical Education - CTE

Career/Technical Field CTE Course Sequence: Complete two or more credits in a CTE course progression within the same Program Area tailored to the student's goals and relevant to the postsecondary pathway(s) outlined in the student's High School and Beyond Plan.

CTE Program Areas

Agricultural Science	Family and Consumer Sciences	Science, Technology, Engineering and Math (STEM)
Business and Marketing	Health Science	Skilled and Technical Sciences

Aerospace Manufacturing 1&2

Full Year, Grades 10, 11, 12

Course Number: TEC213/214

Dual Credit: No

Graduation Requirement: CTE, Mathematics (3rd Year)

Prerequisites: None

CTE Program Area: STEM

Aerospace Manufacturing 1&2 provides an overview of mechanical behavior and characteristics of aerospace materials including metal alloys, polymers, ceramics, and composites. Students will receive hands-on experience in machining, testing, and assessing the properties and performance of aerospace materials.

Students will apply the skills learned by designing and making various projects. Seniors who complete this course and earn an industry-recognized certificate and will have an opportunity to interview local companies.

Industry Recognized Credential: CorePlus and OSHA 10.

Aerospace Manufacturing Advanced 3&4

Full Year, Grades 11, 12

Course Number: TEC313/314

Dual Credit: No

Graduation Requirement: CTE, Mathematics (3rd Year)

Prerequisites: Successful Completion of Aerospace Manufacturing 1&2

CTE Program Area: STEM

Aerospace Manufacturing Advanced 3&4 prepares students to apply basic engineering principles and technical skills in support of engineers and other professionals engaged in developing, manufacturing, and testing aircraft, spacecraft and their systems. This includes instruction in aircraft/spacecraft systems technology; design and development testing, prototype, and operational testing; inspection and maintenance procedures, instrument calibration, test equipment operation; maintenance and report preparation. *Industry Recognized Credential: CorePlus.*

AFJROTC Drill and Ceremonies (WHS only)

Semester, Grades 9, 10, 11, 12

Course Number: FLT611

Dual Credit: No

Graduation Requirement: CTE, Physical Education, Arts

Prerequisites: Must currently be enrolled in an AFJROTC academic course.

CTE Program Area: Skilled and Technical Sciences

In Drill and Ceremonies students will learn advanced drill & ceremonies and creatively develop exhibition drill maneuvers in preparation for several performances throughout the year. Students compete and are judged at Northwest Drill & Rifle League competitions. Students already enrolled in AFJROTC may also take this zero-hour course.

AFJROTC Management of the Cadet Corps and Leadership 1&2 (AS400/LE400) (WHS only)

Full Year, Grades 12

Course Number: FLT413/414

Dual Credit: No

Graduation Requirement: CTE

Prerequisites: Successful Completion of Two Years of AFJROTC (One year with teacher permission).

CTE Program Area: Skilled and Technical Sciences

AFJROTC Management of the Cadet Corps and Leadership 1&2 provides cadets the opportunity to put theories of the previous leadership courses into practice. Planning, organizing, coordinating, directing, controlling, and decision-making will be done by cadets. Cadets apply what they learned in their leadership courses and put into practice their communication, decision-making, personal- interaction, managerial, and organizational skills. *Industry Recognized Credential: Certificate of Training and Certificate of Completion.*

AFJROTC Milestones into Aviation History and Leadership 1&2(AS100/LE100) (WHS only)

Full Year, Grades 9, 10, 11, 12

Course Number: FLT111/112

Dual Credit: No

Graduation Requirement: CTE

Prerequisites: None

CTE Program Area: Skilled and Technical Sciences

AFJROTC Milestones into Aviation History and Leadership 1&2 explores the history of aviation from the early days of flight to the present space programs. Learn about job opportunities in the aerospace industry. Students build and fly a Balsa wood airplane. Students develop self-confidence and pride, in themselves, uniform, school, and community. Leadership, community service, and management opportunities are available and stressed. Paired with LE100: Citizenship, Character, and Air Force Tradition.

AFJROTC Survival and Return and Leadership 1&2(AS410/LE300) (WHS only)

Full Year, Grades 10, 11, 12

Course Number: FLT313/314

Dual Credit: No

Graduation Requirement: CTE

Prerequisites: Successful Completion of Milestones into Aviation History or teacher permission.

CTE Program Area: Skilled and Technical Sciences

AFJROTC Survival and Return and Leadership 1&2 is based on the Air Force's actual survival manual and training in skills, knowledge, and attitudes necessary to successfully perform fundamental tasks needed for survival. The course presents "good to know" information useful in any situation such as a lost hiker or someone stranded in a snowstorm and includes a field trip to McChord Field for instruction/demonstrations from Air Force Survival, Evasion, Rescue, Escape instructors. Paired with LE300: Life Skills and Career Opportunities. *Industry Recognized Credential: Certificate of Training and Certificate of Completion.*

AFJROTC The Science of Flight: A Gateway to New Horizons and Leadership 1&2(AS200/LE300) (WHS only)

Full Year, Grades 10, 11, 12

Course Number: FLT211/212

Dual Credit: No

Graduation Requirement: CTE

Prerequisites: Successful Completion of Milestones into Aviation History or teacher permission.

CTE Program Area: Skilled and Technical Sciences

AFJROTC The Science of Flight: A Gateway to New Horizons and Leadership 1&2 is an introductory course and a customized textbook that focuses on how airplanes fly, how weather conditions affect flight, flight and the human body, and flight navigation. The course is designed to complement materials taught in math, physics, and other science-related courses. Leadership and management are emphasized through training that focuses on life skills and career opportunities. Paired with LE200: Communication, Awareness, and Leadership. *Industry Recognized Credential: Certification of Training.*

American Sign Language 1&2

Full Year, Grades 9, 10, 11, 12

Course Number: WRL111/112

Dual Credit: Yes – CTE Dual Credit (FPHS only)

Graduation Requirement: CTE, World Language

Prerequisites: None

CTE Program Area: Family and Consumer Sciences

American Sign Language 1&2 course offers specialized and technical training in the field of Deaf Studies and allows students to explore how to facilitate communication between Deaf and hearing people using American Sign Language (ASL). Students learn basic communication components and grammar of ASL, as well as becoming familiar with Deaf culture. Students who earn a grade of 'B' (3.0) or better in this course can earn 5 college credit through Seattle Central College.

American Sign Language 3&4

Full Year, Grades 10, 11, 12

Course Number: WRL113/114

Dual Credit: No

Graduation Requirement: CTE, World Language

Prerequisites: Successful completion of American Sign Language 1&2.

CTE Program Area: Family and Consumer Science

American Sign Language 3&4 offers in depth, highly specialized and technical training in the field of linguistics and, Deaf Studies and prepares students for facilitating communication between Deaf and hearing people using American Sign Language (ASL) in a variety of settings. Students learn professional communication components of ASL as well as content specific vocabulary in a variety of areas such as: medicine, law, and finance. ASL students also have opportunities to become participants in the Deaf community.

American Sign Language 5&6 (WHS only)

Full Year, Grades 11, 12

Course Number: WRL115/116

Dual Credit: No

Graduation Requirement: CTE, World Language

Prerequisites: Successful completion of American Sign Language 1&2 and American Sign Language 3&4.

CTE Program Area: Family and Consumer Sciences

American Sign Language 5&6 provides hands-on opportunities within the classroom setting for facilitating communication between Deaf and hearing people using American Sign Language (ASL). Students explore and analyze a myriad of careers that utilize ASL and examine services that are available for Deaf/Hard of Hearing individuals in their local community. Students also research levels of professionalism, confidentiality, and the Code of Ethics that ASL Interpreters adhere to while interpreting.

AP Art and Design 1&2

Full Year, Grades 10, 11, 12

Course Number: FNA131/132

Dual Credit: Yes – Credit by Exam & CTE Dual Credit

Graduation Requirement: CTE, Arts

Prerequisites: Teacher permission required.

CTE Program Area: Skilled and Technical Sciences

AP Art and Design 1&2 provides students with a learning experience equivalent to that of an introductory college course in studio art foundations. In this course students focus on career exploration in the fields of Design and Professional Production Arts. This course focuses on the theories, methods and techniques and must include the areas of glass, metal, ceramic, wood, polymers, and mixed media. This includes instruction in core art standards, design, concepts sketching, technical drawing, and color theory. Students create a portfolio of work in at least one of three areas of study: Drawing, 2-D Design, or 3-D design. This body of work can be used to meet college admission portfolio requirements and will be assessed by the College Board for Advanced Placement, in lieu of an examination. Students who earn a grade of 'C' (2.0) or better in this course can earn college credit.

AP Computer Science 1&2

Full Year, Grades 10, 11, 12

Course Number: TEC231/232

Dual Credit: Yes – Credit by Exam & CTE Dual Credit

Graduation Requirement: CTE, Mathematics (3rd Year)

Prerequisites: Introduction to Computer Science or teacher permission.

CTE Program Area: Business and Marketing

AP Computer Science 1&2 focuses on the general writing and implementation of generic and customized programs to drive operating systems and that generally prepares individuals to apply the methods and procedures of software design and programming to software installation and maintenance. Includes instruction in software design, low- and high-level languages and program writing; program customization and linking; prototype testing; troubleshooting; and related aspects of operating systems and networks. Students who earn a grade of 'C' (2.0) or better in this course can earn college credit.

Biomedical Innovation 1&2

Full Year, Grades 11, 12

Course Number: SCI415/416

Dual Credit: No

Graduation Requirement: CTE, Science (Lab Science)

Prerequisites: Medical Interventions 1&2

CTE Program Area: Health Sciences

Biomedical Innovation 1&2 is the final course in the Biomedical Science sequence of classes where students build on the knowledge and skills gained from previous courses to design innovative solutions for the most pressing health challenges of the 21st century. Students address topics ranging from public health and biomedical engineering to clinical medicine and physiology. Students work on an independent design project with a mentor or advisor from a university, medical facility, or research institution.

Business Management

Semester, Grades 9, 10, 11, 12

Course Number: BUS111

Dual Credit: Yes – CTE Dual Credit

Graduation Requirement: CTE

Prerequisites: None

CTE Program Area: Business and Marketing

This course prepares individuals to develop and manage independent small businesses. Includes instruction in business administration; enterprise planning and entrepreneurship; start-up; small business operations and problems; personnel supervision; capitalization and investment; taxation; business law and regulations; e-commerce; home business operations; and applications to specific sectors, products, and services. Students who earn a grade of 'C' (2.0) or better in this course can earn college credit.

Community Art

Semester, Grades 10, 11, 12

Course Number: FNA133

Dual Credit: Yes – CTE Dual Credit

Graduation Requirement: CTE, Arts

Pre-requisite: B or better in any entry level art class (Visual Art and Design, Glass Art Beginning, Pottery, Graphic Design, Photography, Yearbook)

CTE Program Area: Skilled and Technical Sciences

Community Art develops skills to create a wide range of visual art designed for the school and broader community. Students design and work together to create public artworks ranging from murals to installations and community art projects. Students learn how artists get funding and approval for community projects and will learn to write art proposals. Students use and develop their art skills and interests, exploring a variety of art media, including drawing, painting, sculpture, photography, and digital artwork.

Construction Trades 1&2 (WHS only)

Full Year (within one semester, class meets every day) Grades 10, 11, 12

Course Number: ARC111/112

Dual Credit: Yes – CTE Dual Credit

Graduation Requirement: CTE, Mathematics (3rd Year)

Prerequisites: Physically fit to lift and carry heavy objects.

CTE Program Area: Skilled and Technical Sciences

Construction Trades 1&2 develops skills for a high demand, high wage career in construction. Students can earn a Construction Skills Certificate. Students will build a variety of carpentry and construction related projects to challenge the skills they develop in the class. Some of the topics covered are basic blueprint creation and reading, hand and power tool safety and use, framing, electrical wiring, and others. Students who earn a grade of 'C' (2.0) or better in this course can earn college credit. *Industry Recognized Credential: OSHA 10.*

Culinary Arts Advanced

Semester, Grades 10, 11, 12

Course Number: FCS113

Dual Credit: Yes – CTE Dual Credit

Graduation Requirement: CTE

Prerequisites: Culinary Arts Beginning and teacher permission.

CTE Program Area: Family and Consumer Sciences

Advanced Culinary Arts trains students for career opportunities in the food service/culinary arts industry. Students learn and practice safety and sanitation procedures, basic communication skills and customer relations, meal planning, and more advanced food preparation skills. Students who earn a grade of 'C' (2.0) or better in this course can earn college credit. *Industry Recognized Credential: Washington State Food Worker Card.*

Culinary Arts Beginning

Semester, Grades 9, 10, 11, 12

Course Number: FCS111

Dual Credit: Yes – CTE Dual Credit

Graduation Requirement: CTE

Prerequisites: None

CTE Program Area: Family and Consumer Sciences

Beginning Culinary Arts prepares explores safety and sanitation, basic culinary skills and knowledge, baked goods, and the food guide pyramid. Students will demonstrate their knowledge through individual and group activities. Students who earn a grade of 'C' (2.0) or better in this course can earn college credit. *Industry Recognized Credential: Washington State Food Worker Card.*

Digital Photography Advanced

Semester, Grades 9, 10, 11, 12

Course Number: ATC302

Dual Credit: No

Graduation Requirement: CTE, Arts

Prerequisites: Digital Photography Beginning

CTE Program Area: Skilled and Technical Sciences

Advanced Digital Photography prepares students to use computer applications and related visual imaging and editing techniques to manipulate images and information originating as digital, still photographs, digital copy, and physical objects in order to communicate messages simulating real-world content. Includes instruction in specialized camerawork and equipment operation and maintenance, image capture, lighting, software applications, and applications to specific commercial, industrial, and entertainment needs. Students who earn a grade of 'C' (2.0) or better in this course can earn college credit.

Digital Photography Beginning

Semester, Grades 9, 10, 11, 12

Course Number: ATC301

Dual Credit: Yes – CTE Dual Credit

Graduation Requirement: CTE, Arts

Prerequisites: None

CTE Program Area: Skilled and Technical Sciences

Beginning Digital Photography focuses on career exploration in the fields of photography. The course includes basic theories, methods and techniques used to plan, produce, and distribute photos, Includes instruction in lighting, camera options, composition, production preparation, and related computer applications. Students who earn a grade of 'C' (2.0) or better in this course can earn college credit.

Early Childhood Education

Semester, Grades 10, 11, 12

Course Number: FCS211

Dual Credit: Yes – CTE Dual Credit

Graduation Requirement: CTE

Prerequisites: None

CTE Program Area: Family and Consumer Sciences

Early Childhood Education develops student knowledge, skills, and practices required for careers in Early Childhood, Education and Services. The course focuses on the provision and management of childcare services and prepares students to plan, design, and manage childcare facilities and programs that meet children's developmental needs and interests and that provide safe and healthy environments. Students who earn a grade of 'C' (2.0) or better in this course can earn college credit.

Eco System Design 1&2

Full Year (2 period class), Grades 9, 10, 11, 12

Course Number: SCI621/622

Dual Credit: Yes – CTE Dual Credit

Graduation Requirement: CTE and Science (Biology, Lab Science)

Prerequisites: None

CTE Program Area: Agriculture Sciences

Eco System Design 1&2 studies environmental science and ecosystems through agriculture, using the FPSD Farm as a living laboratory. The course is designed as a hands-on course that digs into systems thinking, biology, and ecology concepts while learning practical skills of growing food, business, and leadership skills. Students access state-of-the-art tools and resources on the Franklin Pierce Farm site and learn how to design sustainable systems by growing food from seed to harvest. This class is lab and activities are held outside on the farm. Students who earn a grade of 'C' (2.0) or better in this course can earn college credit. *Industry Recognized Credential: Food Handlers Permit.*

Entrepreneurship

Semester, Grades 10, 11, 12

Course Number: BUS112

Dual Credit: Yes – CTE Dual Credit

Graduation Requirement: CTE

Prerequisites: Business Management or Financial Literacy

CTE Program Area: Business and Marketing

Entrepreneurship is designed to introduce students to the world of small business ownership and management. This course builds students' skills in the knowledge of types of business ownership, legal issues, business finance, start-up costs, business trends, site selection, marketing, pricing strategies and the development of a business plan on the students' product or service of choice. The Entrepreneurship class will develop and/or operate a class business in which they will realistically perform duties in areas such as product planning, financing, human resources, marketing, advertising, selling, and management of product(s). Students who earn a grade of 'C' (2.0) or better in this course can earn college credit.

Family Health

Semester, Grades 9, 10, 11, 12

Course Number: HPE111

Dual Credit: No

Graduation Requirement: Health, CTE

Prerequisites: None

CTE Program Area: Family and Consumer Sciences

Family Health prepares students for life-long decision making, problem solving, critical thinking, and management skills related to health and wellness issues impacting families. The primary role is enabling

students to assume an active role in developing healthy lifestyles for themselves and others. Integrating the Washington Health and Fitness essential learning's with standards and competencies from the National Standards for Family and Consumer Sciences Education, this course focuses on the interrelationships of healthy choices and a productive, satisfying life. *Industry Recognized Credential: Adult and Pediatric First Aid/CPR/AED for Washington High School students.*

Financial Literacy 1&2

Full Year, Grades 11, 12

Course Number: BUS211/BUS212

Dual Credit: Yes – CTE Dual Credit

Graduation Requirement: CTE, Mathematics (3rd Year)

Prerequisites: None

CTE Program Area: Business and Marketing

Financial Literacy 1&2 develops financial management skills to prepare students to make smart financial decisions, now and in the future. Topics include banking services, consumer credit, budgeting, saving, investing, stocks, insurance, retirement planning, how to buy a car and more. Students learn how to avoid financial mistakes by understanding your options and responsibilities and to be financially successful in the real world. Students who earn a grade of 'C' (2.0) or better in this course can earn college credit.

Fitness Specialist 1&2 (FPHS only)

Full Year, Grades 11, 12

Course Number: HPE211/212

Dual Credit: Yes – CTE Dual Credit

Graduation Requirement: CTE, Physical Education

Prerequisites: Successful completion (C or better) in Intro to PE.

CTE Program Area: Health Sciences

Fitness Specialist 1&2 prepares students to work in the fitness industry - in health and fitness clubs, wellness centers, public and private recreation facilities, hospitals, and corporate fitness programs. In this class students apply what they learn in the weight room with student athletes. With completion of this program, after graduation students will be able to gain personal fitness trainer certification. Students who earn a grade of 'C' (2.0) or better in this course can earn college credit. *Industry Recognized Credential: Adult and Pediatric First Aid/CPR/AED.*

Food Justice in Action 1&2

Full Year, Grades 10, 11, 12

Course Number: SCI651/SCI652

Dual Credit: Yes – CTE Dual Credit

Graduation Requirement: CTE (2), Science (Lab Science) and English

Prerequisites: Intake check-in with Instructor

CTE Program Area: Agricultural Sciences

Everybody eats! Food Justice in Action 1&2 is a four-period interdisciplinary program on the ten-acre school district farm. The course uses food and food justice as the starting place for conversations, reading, writing, and thinking critically around current and relevant social issues. In community, this course explores what it means to be in right relationship with the land and one another – focusing on Identity, shared history, equitable food access, climate change, social justice, leadership and more. This work makes a difference! Through hands on outdoor learning, students learn real world skills in community leadership, food production, and activism while being part of a small, tight knit group feeding the community nourishing food. If you enjoy hands on, project-based learning, like to spend time outside, and want to put knowledge about environmental science, food justice, and our communities into action, this program is for you! *Industry Recognized Credential: Food Handlers Permit.*

Glass Art Advanced (FPHS only)

Semester, Grades 9, 10, 11, 12

Course Number: FNA114

Dual Credit: No

Graduation Requirement: CTE, Arts

Prerequisites: Glass Art Beginning or teacher permission.

CTE Program Area: Skilled and Technical Sciences

Advanced Glass Art develops personal expression through glass art. Students design their own artworks, determining the best media and techniques to communicate their ideas to further develop their artistic style expanding their glass art portfolio. Instruction includes project planning, art analyses, and critiques.

Glass Art Beginning (FPHS only)

Semester, Grades 9, 10, 11, 12

Course Number: FNA113

Dual Credit: No

Graduation Requirement: CTE, Arts

Prerequisites: None

CTE Program Area: Skilled and Technical Sciences

Beginning Glass Art prepares students to apply knowledge and technical skills in creating, producing, and selling products in the fields of glass and mixed media. Instruction includes art theory, design, safety, technical skills, production skills and marketing, sales, entrepreneurship, and management functions associated with operating a small business in professional arts.

Global Challenges 1&2 (WHS only)

Full Year, Grades 9, 10, 11, 12

Course Number: SCI611/612

Dual Credit: Yes – CTE Dual Credit

Graduation Requirement: CTE, Science (Lab Science)

Prerequisites: None

CTE Program Area: STEM

Global Challenges 1&2 explores the most pressing environmental and social issues of the 21st century. Students are encouraged to problem-solve, critically analyze, and debate topics ranging from climate change, species loss, pollution, and the food system. Students create and design locally relevant solutions to solve global issues. This course is designed to create global citizens equipped with the knowledge to be change makers within their community. Students who earn a grade of 'C' (2.0) or better in this course can earn college credit.

Graphic Design

Semester, Grades 9, 10, 11, 12

Course Number: ATC321

Dual Credit: Yes – CTE Dual Credit

Graduation Requirement: CTE, Arts

Prerequisites: None

CTE Program Area: Skilled and Technical Sciences

Graphic Design develops digital artwork skills. Using Adobe Photoshop, Illustrator and InDesign students will create works of art that are meaningful and personal. Learn the principles of design and art elements while gaining skills that make you employable. Students are exposed to the entire creative process from concept sketches to layout requirements for printing. Students who earn a grade of 'C' (2.0) or better in this course can earn college credit.

Human Body Systems 1&2

Full Year, Grades 10, 11, 12

Course Number: SCI215/216

Dual Credit: Yes – CTE Dual Credit

Graduation Requirement: CTE, Science (Lab Science)

Prerequisites: None

CTE Program Area: Health Sciences

Human Body Systems 1&2 prepares students to examine the interactions of body systems as they explore identity, communication, power, movement, protection, and homeostasis. Students design experiments investigate the structures and functions of the human body and use data acquisition software to monitor body functions such as muscle movement, reflex and voluntary action, and respiration. Exploring science in action, students build organs and tissues on a skeletal manikin, work through interesting real-world cases,

and play the roles of biomedical professionals to solve medical mysteries. Students who earn a grade of 'C' (2.0) or better in this course can earn college credit.

Independent Living (WHS only)

Semester, Grades 10, 11, 12

Course Number: FCS311

Dual Credit: No

Graduation Requirement: CTE

Prerequisites: None

CTE Program Area: Family and Consumer Sciences

Independent Living prepares students for responsible decision making in a variety of areas that confront young adults as they leave high school. The primary focus of Independent Living is the development of essential skills for living on their own, in a family, or with others. Standards and competencies are selected from the National Standards for Family and Consumer Sciences Education. Planning systems to manage connections between human economic and environmental resources examining family responsibilities, career choices, and community involvement is an essential component of this course.

Introduction to Computer Science 1&2

Full Year, Grades 9, 10, 11, 12

Course Number: TEC113/TEC114

Dual Credit: Yes – CTE Dual Credit

Graduation Requirement: CTE, Mathematics (3rd Year)

Prerequisites: None

CTE Program Area: Business and Marketing

Introduction to Computer Science 1&2 covers the foundations of computer science and basic programming, with an emphasis on helping students develop logical thinking and problem-solving skills. At a time when computer science affects how people work and live, Computer Science empowers students grades 9-12 to become creators, instead of merely consumers. Students who earn a grade of 'C' (2.0) or better in this course can earn college credit.

Introduction to Engineering Design 1&2

Full Year, Grades 9, 10, 11, 12

Course Number: TEC111/112

Dual Credit: Yes – CTE Dual Credit

Graduation Requirement: CTE, Mathematics (3rd Year)

Prerequisites: None

CTE Program Area: STEM

Introduction to Engineering Design 1&2 explores the engineering design process, applying math, science, and engineering standards to hands-on projects. Students work both individually and in teams to design solutions to a variety of problems using 3-D modeling software and apply their skills utilizing 3-D printers and laser engravers and more traditional shop equipment. Students who earn a grade of 'C' (2.0) or better in this course can earn college credit.

Marketing

Semester, Grades 9, 10, 11, 12

Course Number: BUS115

Dual Credit: Yes – CTE Dual Credit

Graduation Requirement: CTE

Prerequisites: None

CTE Program Area: Business and Marketing

Marketing teaches marketing skills and concepts that apply to many industries today. Students develop skills related to interpersonal communication, self-presentation, economics, marketing, sales, employability, career discovery, and ethical decision-making. This class will include aspects of Sports, Entertainment, and Retail marketing. Students who earn a grade of 'C' (2.0) or better in this course can earn college credit.

Medical Interventions 1&2

Full Year, Grades 11, 12

Course Number: SCI315/316

Dual Credit: Yes – CTE Dual Credit

Graduation Requirement: CTE, Science (Lab Science)

Prerequisites: Human Body Systems 1&2

CTE Program Area: Health Sciences

Medical Interventions 1&2 investigates a variety of interventions involved in the prevention, diagnosis and treatment of disease as they follow the life of a fictitious family. Students learn how to screen and fight infection; screen and evaluate the code in human DNA; prevent, diagnose and treat cancer; and prevail when the organs of the body begin to fail. Through these scenarios, students are exposed to a range of interventions related to immunology, surgery, genetics, pharmacology, medical devices, and diagnostics. Students who earn a grade of 'C' (2.0) or better in this course can earn college credit.

Pottery Advanced

Semester, Grades 9, 10, 11, 12

Course Number: FNA118

Graduation Requirement: CTE, Arts

Dual Credit: No

Prerequisites: Pottery

CTE Program Area: Skilled and Technical Sciences

Advanced Pottery expands upon the fundamentals learned in Pottery. Students will increase their knowledge of pottery, sculpture, and complex hand building techniques. Wheel throwing techniques will be reintroduced and elevated. Students learn advanced finishing techniques in firing and glazing. Artistic style and ideas are developed while applying the Elements of Art and Principles of Design. Students will learn Advanced Ceramic Relief. Historical and contemporary pottery/ceramics are studied as students build their skills, understanding and practice their visual literacy.

Pottery Beginning

Semester Grades 9, 10, 11, 12

Course Number: FNA117

Dual Credit: No

Graduation Requirement: CTE, Arts

Prerequisites: None

CTE Program Area: Skilled and Technical Sciences

Beginning Pottery teaches the fundamentals of Pottery. Students learn pottery and sculpture using hand building techniques. Some wheel throwing techniques are explored. Students learn finishing techniques in firing and glazing. Artistic style and ideas are developed while applying the elements of art and principles and design. Historical and contemporary pottery/ceramics are studied as students build their skills, understanding and practice their visual literacy.

Principles of Biomedical Science 1&2

Full Year, Grades 9, 10, 11, 12

Course Number: SCI115/116

Dual Credit: Yes – CTE Dual Credit

Graduation Requirement: CTE, Science (Lab Science), Health

Prerequisites: None

CTE Program Area: Health Sciences

Principles of Biomedical Science 1&2 investigates the human body systems and various health conditions, including heart disease, diabetes, sickle cell disease, hypercholesterolemia, and infectious diseases. Students determine the factors that led to the death of a fictional person and investigate lifestyle choices and medical treatments that might have prolonged the person's life. The activities and projects introduce students to human physiology, medicine, research processes, and bioinformatics. This course is designed to provide an overview of all the courses in the Biomedical Sciences program and lay the scientific foundation for subsequent courses. Students who earn a grade of 'C' (2.0) or better in this course can earn college credit.

Restoration Ecology (WHS only)

Semester, Grades 9, 10, 11, 12

Course Number: SCI627

Dual Credit: Yes – CTE Dual Credit

Graduation Requirement: CTE, Science (Lab Science)

Prerequisites: None

CTE Program Area: Agriculture Sciences

Restoration Ecology is a hands-on course that utilizes the on-campus wetland as a living laboratory. Students engage in real world citizen science to understand the social, ecological, and cultural importance of natural spaces to the community. Students will engage in active restoration work including removal of invasive species, planting of native vegetation, and on-going wildlife surveys. This class is lab and activities will predominately take place outdoors.

Robotics Technology

Semester, Grades 9, 10, 11, 12

Course Number: TEC115

Dual Credit: No

Graduation Requirement: CTE

Prerequisites: None

CTE Program Area: STEM

Robotics Technology uses VEX Robots, LEGO EV3s, and other robots to learn problem solving, concepts of logic, design, and computational thinking. Students are introduced to various forms of robotic design including mechanical systems, programming, electronics, computer science, manufacturing, and system design. Students will have the opportunity to apply principles learned and build\operate robots to address a variety of challenges. In addition, students will have the opportunity to compete in a robotics competition.

Screen Printing Advanced (WHS only)

Semester, Grades 9, 10, 11, 12

Course Number: FNA125

Dual Credit: Yes – CTE Dual Credit

Graduation Requirement: CTE, Arts

Prerequisites: Screen Printing Beginning or teacher permission.

CTE Program Area: Skilled and Technical Sciences

Advanced Screen Printing builds on the basic concepts in screen-printing learned in the Beginning Screen Printing course. Advanced students run the Patriot Screen Print Shop with the goal of having a website and controlling merchandise that is sold at the school store. Students who earn a grade of 'C' (2.0) or better in this course can earn college credit.

Screen Printing Beginning (WHS Only)

Semester, Grades 9, 10, 11, 12

Course Number: FNA115

Dual Credit: Yes – CTE Dual Credit

Graduation Requirement: CTE, Arts

Prerequisites: None

CTE Program Area: Skilled and Technical Sciences

Beginning Screen Printing introduces the screen-printing trade that generally prepares students to apply technical knowledge and skills to plan, prepare, and execute a variety of commercial and industrial graphic communication jobs. A combination of technical laboratory applications and theory provide the foundation for this course. Students will produce a final project by designing and printing their own T-shirt. Students who earn a grade of 'C' (2.0) or better in this course can earn college credit.

Sports Medicine Advanced 3&4 (FPHS only)

Full Year, Grades 11, 12

Course Number: MDC121/122

Dual Credit: Yes – CTE Dual Credit

Graduation Requirement: CTE

Prerequisites: Sports Medicine Beginning 1 & 2.

CTE Program Area: Health Sciences

Sports Medicine Advanced 3 & 4 focuses on advanced sports medicine concepts and refining athletic training skills. This includes assisting beginning student athletic trainers in lab, presenting sports medicine topics, completing independent projects, managing, and running the training room. This course offers students hands-on training in sports therapy and athletic training. There is a requirement of 30 hours per semester that will be necessary to achieve the maximum grade for the course's practicum component. Students who earn a grade of 'C' (2.0) or better in this course can earn college credit. *Industry Recognized Credential: Adult and Pediatric First Aid/CPR/AED.*

Sports Medicine Beginning 1&2 (FPHS only)

Full Year, Grades 10, 11, 12

Course Number: MDC111/112

Dual Credit: Yes – CTE Dual Credit

Graduation Requirement: CTE

Prerequisites: None Fitness Specialist Recommended.

CTE Program Area: Health Sciences

Sports Medicine Beginning 1&2 focuses on an introduction to sports medicine. It covers all aspects of the profession of athletic training. The sports medicine course offers students hands-on training in sports therapy and athletic training. There is a requirement of 20 hours per semester that will be necessary to achieve the maximum grade for the course's practicum component. Students who earn a grade of 'C' (2.0) or better in this course can earn college credit. *Industry Recognized Credential: Adult and Pediatric First Aid/CPR/AED.*

Teaching Academy 1&2

Full Year, Grades 10, 11, 12

Course Number: CIE311/312

Dual Credit: Yes – CTE Dual Credit

Graduation Requirement: CTE

Prerequisites: None Early Childhood Education Recommended.

CTE Program Area: Family and Consumer Sciences

Teaching Academy 1&2 prepares students with the knowledge, skills, and practices required for careers in education. The course focuses on the general theory and practice of learning and teaching; the basic principles of educational psychology; the art of teaching; the planning and administration of educational activities; and the social foundations of education. In addition, standards and competencies from the Early Childhood, Education and Services and the Family and Community Services sections of the Family and Consumer Sciences National Standards are attained by students, preparing them for the beginning levels of a variety of human service careers. Students who earn a grade of 'C' (2.0) or better in this course can earn college credit. *Industry Recognized Credential: ETS ParaPro.*

Technology Exploration 1&2 (FPHS only)

Semester Grades 9, 10, 11, 12

Course Number: ATC311/312

Dual Credit: Yes – CTE Dual Credit

Graduation Requirement: CTE, Arts

Prerequisites: None

CTE Program Area: Business and Marketing

Technology Exploration 1&2 explores the basics of digital photography as well as basic design principles using Photoshop and InDesign and computer science skills. Students learn Microsoft Word and Microsoft PowerPoint 2010 with the opportunity to earn industry certification. Students who earn a grade of 'C' (2.0) or better in this course can earn college credit. *Industry Recognized Credential: Microsoft Office Specialist (MOS).*

Video Editing 1&2

Full Year, Grades 9, 10, 11, 12

Course Number: ATC211/212

Dual Credit: Yes – CTE Dual Credit

Graduation Requirement: CTE, Arts

Prerequisites: None

CTE Program Area: Skilled and Technical Sciences

Video Editing 1&2 is a performance-based class for students interested in the television, film, or video production industries. Coursework includes practical experience shooting and editing videos. The course Includes instruction script writing, sound, lighting, camera operations; production preparation; related computer applications; and specialized applications such as news, entertainment, live talk, sports, commercial and corporate production. Students who earn a grade of 'B' (3.0) or better in this course can earn college credit.

Video Production 1&2

Full Year, Grades 9, 10, 11, 12

Course Number: ATC221/222

Dual Credit: Yes – CTE Dual Credit

Graduation Requirement: CTE, Arts

Prerequisites: None

CTE Program Area: Skilled and Technical Sciences

Video Production 1&2 prepares students to apply technical knowledge and skills to the production of video as it relates to the television, film, or video production industries. The course Includes instruction script writing, sound, lighting, camera operations and maintenance; operations; production preparation; related computer applications; and specialized applications such as news, entertainment, live talk, sports, commercial and corporate production. Students who earn a grade of 'B' (3.0) or better in this course can earn college credit.

Visual Art and Design

Semester, Grades 9, 10, 11, 12

Course Number: FNA111

Dual Credit: Yes – CTE Dual Credit

Graduation Requirement: CTE, Arts

Prerequisites: None

CTE Program Area: Skilled and Technical Sciences

Visual Art and Design explores a variety of two-dimensional art media including a variety of types and styles of drawing and painting. Students may build on skills and concepts learned in middle school art classes or may be learning art skills and concepts for the first time. The focus of the course is on producing artwork with a range of media, techniques, and styles. The course also begins to explore art history, art criticism, and aesthetics. There is a focus on art skills that transfer to careers in the arts. Students who earn a grade of 'C' (2.0) or better in this course can earn college credit.

Yearbook 1&2

Full Year, Grades 10, 11, 12

Course Number: ATC401/402

Dual Credit: Yes – CTE Dual Credit

Graduation Requirement: CTE, Arts

Prerequisites: Digital Photography, Graphic Design or teacher permission.

CTE Program Area: Business and Marketing

Yearbook 1&2 develops a creative theme and designs the school's yearbook. Students will apply technical knowledge and skills to the layout, design and publication. All phases of publication including copy writing, layout, and photography are covered by applying sophisticated computer technology to contemporary design. Students will be required to work outside of class time to meet publishing deadlines. Students who earn a grade of 'C' (2.0) or better in this course can earn college credit.

English Language Arts

English courses engage students in reading, writing, speaking, listening, and thinking that will support them throughout life. Students study different types of literature and learn a variety of writing techniques and styles while also collaborating to improve their speaking and listening skills. Washington state requires four years of high school English. Each Franklin Pierce Schools student is required to take a full year of freshman, sophomore, junior and senior English.

Freshman English 1&2

Full year, Grade 9

Course Number: ENG111/112

Dual Credit: No

Graduation Requirement: English

Prerequisites: None

This class enables students to refine their writing, speaking, listening, and reading skills. They become familiar with common literary terms, figurative language, multiple modes of writing, and general vocabulary. Students focus on poetry, narrative writing, short answer & extended responses, and argumentative writing as they become active participants in developing and organizing their ideas. Speaking and listening skills are also critical components of this course. In addition, students utilize higher level thinking skills through various assignments and projects.

Advanced Freshman English 1&2

Full year, Grade 9

Course Number: ENG121/122

Dual Credit: No

Graduation Requirement: English

Prerequisites: None

Speaking and Listening skill development is a critical component of this course. This class enables students to refine their writing and reading skills. They become familiar with common literary, argumentative, and analytical terms and apply their learning to various forms of media and literature. Students learn to become active readers and learners by applying various strategies such as close reading and note taking. Students become active participants in their writing with a focus on the expository and argumentative writing modes. In addition, students utilize higher level thinking skills through various assignments, projects, and class discussions. A main goal of Advanced Freshman English is to prepare students for Advanced Placement classes they will take during their 11th and 12th grade years. Advanced English requires more detailed and extensive writing as well as more rigorous reading assignments than the regular 9th program. Reading and completion of assignments outside of class time are required.

Language Arts 1&2

Full year, Grades 9, 10, 11, 12

Course Number: Grade 9=ENG101/102

Grade 10=ENG 201/202

Grade 11=ENG 301/302

Grade 12=ENG 401/402

Dual Credit: No

Graduation Requirement: English

Prerequisites: IEP Determined

This course emphasizes intense writing and reading instruction. The Jane Schaeffer writing technique, Language! Curriculum and/or reasoning and writing curriculum will be used to strengthen literacy skills. A high level of direct instruction and student participation is utilized in all Language Arts courses.

Reading Lab (Read to Achieve) 1&2

Full Year, Grades 9, 10, 11, 12

Course Number: ENG501/502

Dual Credit: No

Graduation Requirement: English

Prerequisites: IEP Determined

The program is based on a proven approach to improving comprehension. Read to Achieve provides two courses to boost achievement with explicit reading for understanding instruction: With *Comprehending Content-Area Text*, students effectively read science and social studies texts, take notes from textbooks and classroom lectures, and learn real world study skills and work strategies. With *Comprehending Narrative Text* students effectively read conceptually challenging text, capture main idea, key concepts, and details, and engage in high quality open discussions of content.

Sophomore English 1&2

Full Year, Grade 10

Course Number: ENG211/212

Dual Credit: No

Graduation Requirement: English

Prerequisites: None

Speaking and Listening skill development is a critical component of this course. This class enables students to refine their writing and reading skills. Students complete frequent writing tasks to reinforce and improve students' writing skills. Students are active participants in their writing. A variety of reading strategies expand comprehension of literary and informational text. This class continues to prepare students to meet standards on the state English Language Arts content test.

Advanced Sophomore English 1&2

Full year, Grade 10

Course Number: ENG221/222

Dual Credit: No

Graduation Requirement: English

Prerequisites: None

Speaking and Listening skill development is a critical component of this course. Advanced Sophomore English is a course designed for the highly capable English student who is independent and who enjoys writing, reading, and thinking. Students read literature from different genres. Assignments require students to use higher-level thinking skills, and to write and read critically and analytically. Students develop their own writing styles. A goal of Advanced Sophomore English is to prepare students for Advanced Placement classes they will take during their 11th and 12th grade years. Advanced English requires more detailed and extensive writing as well as more rigorous reading assignments than the regular ten program. Reading and completion of assignments outside of class time may be required.

Junior English 1&2 (FPHS only)

Full year, Grade 11

Course Number: ENG311/312

Dual Credit: No

Graduation Requirement: English

Prerequisites: None

In this course, students develop skills in writing, reading, and speaking. Composition, vocabulary, grammar, drama, poetry, short story, and the novel will be studied. There is an emphasis on American Literature which reflects eras in American history.

Bridge to College English Preparation 1&2 (WHS only)

Full year, Grade 11

Course Number: ENG323/324

Dual Credit: No

Graduation Requirement: English

Prerequisites: None

The Bridge to College English Prep language arts course is primarily for juniors who have not yet met standard on the Smarter Balanced assessment. The course curriculum emphasizes reading, writing, speaking & listening, and research based on the Common Core State Standards (CCSS) for ELA. Students engage with rigorous texts and activities that support the standards' additional goals of developing the capacities of literacy, including deepening appreciation of other cultures, valuing evidence, and responding to varying tasks across content areas, and navigating technology to support their work.

AP Language and Composition 1&2 (FPHS only)

Full year, Grade 11

Course Number: ENG331/332

Dual Credit: Yes – Credit by Exam

Graduation Requirement: English

Prerequisites: None

Speaking and Listening skill development is a critical component of this course. The primary goal of the course is to develop an awareness of language and to sharpen skills in essay development, language analysis, and critical reading. A secondary goal of this course is to prepare students to be successful in college English courses. Students develop individual styles adaptable to different audiences. The course includes an in-depth study of style and focus on the analysis of prose; it will also require independent reading and analysis of texts outside of class time. Throughout the year, students are introduced to the semantic, structural, and rhetorical resources of the language. The AP test given in May is required of all students enrolled in this class. College credit may be received from taking the AP test.

College Composition: Exposition and Argumentation 1&2, College in the High School

Full year, Grades 11, 12

Course Number: ENG433/434

Dual Credit: Yes – College Course Completion

Graduation Requirement: English

Prerequisites: Writing Placement Test or General Advising

This college course provides opportunities for students to develop and enhance their written communication skills. It stresses the organization, development, and support of ideas and perspective in exposition and argumentation as public discourse, familiarization with library resources and application of the rules and conventions of standard American English. Upon successful completion of the course, students can earn up to five credits in ENGL101 from Eastern Washington University.

Food Justice in Action 1&2

Full year, Grades 10, 11, 12

Course Number: SCI651/652

Dual Credit: Yes – CTE Dual Credit

Graduation Requirement: CTE (2), Science (Lab Science) and English

Prerequisites: Intake check-in with Instructor

Everybody eats! Food Justice in Action 1&2 is a four-period interdisciplinary program on the ten-acre school district farm. The course uses food and food justice as the starting place for conversations, reading, writing, and thinking critically around current and relevant social issues. In community, this course explores what it means to be in right relationship with the land and one another – focusing on Identity, shared history, equitable food access, climate change, social justice, leadership and more. This work makes a difference! Through hands on outdoor learning, students learn real world skills in community leadership, food production, and activism while being part of a small, tight knit group feeding the community nourishing food. If you enjoy hands on, project-based learning, like to spend time outside, and want to put knowledge about environmental science, food justice, and our communities into action, this program is for you! *Industry*

Recognized Credential: Food Handlers Permit.

Creative Writing (FPHS only)

Semester, Grades 11, 12

Course Number: ENG611

Dual Credit: No

Graduation Requirement: Elective

Prerequisites: None

Students examine themselves and the world around them through the art of writing and creative expression. This is achieved through interacting with both creating original works and reading and analyzing relevant works of literature. This semester long class is divided up between writing poetry, short fiction, and a brief exposure to creative non-fiction. Whether students already have a passion for writing and want to hone their skills, or if they are excited to try it out for the first time, Creative Writing gives skills and tricks that they can utilize to create engaging works of poetry and prose.

World Mythology (FPHS only)

Semester, Grades 11, 12

Course Number: ENG613

Dual Credit: No

Graduation Requirement: Elective

Prerequisites: None

Examine myths, legends, and stories from multiple cultures across the world dating back to the beginning of storytelling as we know it. Students study heroes, tricksters, creation myths, and more from a variety of places and look at the common elements that tie us all together in the human experience as we all look to the world around us to find answers to life's big questions. Read, watch, and experience stories with opportunities for engaging projects, presentations, and interactions.

Introduction to Literature 1&2, College in the High School

Full year, Grades 11, 12

Course Number: ENG437/438

Dual Credit: Yes – College Course Completion

Graduation Requirement: English

Prerequisites: None

Literary approaches in human experience are examined including short fiction, poetry, and drama. Principal attention is paid to the elements that make up literature, with supporting discussion of ideas, attitudes, problems, and values. Upon successful completion of the course, students can earn up to five credits in ENGL170 from Eastern Washington University.

English Composition: Literature 1&2, College in the High School (FPHS only)

Full year, Grades 12

Course Number: ENG435/436

Dual Credit: Yes – College Course Completion

Graduation Requirement: English

Prerequisites: None

This course focuses on the study and practice of good writing. Topics are derived from reading and discussing stories, poems, essays and plays. Upon successful completion of the course, students can earn up to five credits in ENGL111 from University of Washington.

Bridge to College English Language Arts 1&2

Full year, Grade 12

Course Number: ENG423/424

Dual Credit: No

Graduation Requirement: English

Prerequisites: none

The Bridge to College English Language Arts course is for seniors and is designed to prepare students to be college and career ready. The course curriculum emphasizes Common Core State Standards (CCSS) for ELA including skills in reading, writing, speaking & listening, and conducting research. Students engage with rigorous texts and activities that support the standards' additional goals of developing the capacities of literacy, including deepening appreciation of other cultures, valuing evidence, responding to varying tasks across content areas, and navigating technology to support their work.

AP Literature and Composition (FPHS only)

Full year, Grade 12

Course Number: ENG431/432

Dual Credit: Yes – Credit by Exam

Graduation Requirement: English

Prerequisites: None

In Advanced Placement English students engage in the careful reading of literary works. Through this study, they sharpen their awareness of language and their understanding of the writer's craft. They also develop critical standards for the independent appreciation of literary works and increase their sensitivity to literature. To achieve this, students study individual texts, analyzing the language, characters, actions, and themes. Students consider structure, meaning, and value as related to contemporary mores of critical

analysis. Students ideally enjoy reading novels, plays, poetry, essays, and short stories. The course involves independent reading assignments and regular homework that will have to be completed outside of class time. Speaking and Listening skill development is also a critical component of this course. Students are required to take the AP test given in May. College credit may be received from taking the AP test.

English Language Learning

Beginning English

Semester, Grades 9, 10, 11, 12

Course Number: ELE 501/502

Dual Credit: No

Prerequisites: Have been attending U.S. schools 1.5 years or less and Active Placement in the EL Program

This course is designed for multilingual students acquiring English at the Entering or Beginning Levels (Levels 1 and 2) of proficiency. The course work is aligned with English Language Proficiency standards with a focus on vocabulary building, basic reading skills, writing skills, phonemic awareness, and speech skills in English, as well as introducing the U.S. school system and culture. This class is an elective credit and does not count towards an English Language Arts credit. This class may be repeated for credit depending on student needs and teacher guidance.

Academic Language Development

Semester, Grades 9, 10, 11, 12

Course Number: ELE 503/504

Dual Credit: No

Prerequisites: Active Placement in the EL Program

This course is designed for multilingual students acquiring English at the Beginning, Developing, and Expanding Levels (Levels 2 – 4) of proficiency. It includes more intensive instruction in reading and writing in English. Students further develop their skills in vocabulary and grammar, as well as their ability to express themselves both orally and in writing. This class is an elective credit and does not count towards an English Language Arts credit. This class may be repeated for credit depending on student needs and teacher guidance.

Health & Physical Education

All students complete three semesters of Physical Education and one semester of Health to meet graduation requirements. Courses are co-ed. PE students are required to dress in appropriate workout clothes and shoes - athletic t-shirt, athletic style shorts, socks and rubber soled athletic shoes. (No black soled shoes are allowed in class.) Sweats or warm-ups are highly recommended for winter months and outdoor cardio days. Satisfactory completion of PE courses requires regular attendance and participation in all activities. Unless specified otherwise, grading will be based on active involvement, participation level, written tests, and completed coursework.

Freshmen are required to take a one-semester Health class and a one-semester Intro to PE. In grades 10-12, students may choose from other courses listed.

Family Health

Semester, Grade 9, 10, 11, 12

Course Number: HPE111

Dual Credit: No

Graduation Requirement: Health, CTE

Prerequisites: None

Family Health prepares students for life-long decision making, problem solving, critical thinking, and management skills related to health and wellness issues impacting families. The class enables students to assume an active role in developing healthy lifestyles for themselves and others. Integrating the Washington Health and Physical Education standards with standards and competencies from the National Standards for Family and Consumer Sciences Education, this course focuses on the interrelationships of healthy choices and a productive, satisfying life. *Industry Recognized Credential: Adult and Pediatric First Aid/CPR/AED for Washington High School students.*

Intro to P.E.

Semester, Grade 9

Course Number: HPE112

Dual Credit: No

Graduation Requirement: Physical Education

Prerequisites: None

This is the first Physical Education course to be taken and must be satisfactorily completed before enrolling in any other Physical Education courses. The class emphasizes personal fitness through participation in a wide range of activities drawing from: general fitness testing, aerobic exercise, weight training, circuit training, cardio, team & individual sports. This introductory course sets students up for success in lifelong fitness activities after high school.

Advanced P.E.

Semester, Grades 10, 11, 12

Course Number: HPE122

Dual Credit: No

Graduation Requirement: Physical Education

Prerequisites: Intro to P.E.

Students must pass Intro to PE to sign up for this class. The course covers a wide range of advanced weight training, circuit training, cardio, team & individual sports and other activities to set students up for success in lifelong fitness activities after high school. There is a strong emphasis on personal fitness through active participation in general fitness testing, aerobic exercise, cardiorespiratory endurance, weight room etiquette and training, and different fitness concepts and sport training principles. Activities are tailored to ability levels of the students in class. This class may be repeated for credit.

Individual and Dual Sports (FPHS only)

Semester, Grades 10, 11, 12

Course Number: HPE114

Dual Credit: No

Graduation Requirement: Physical Education

Prerequisites: Intro to PE

This course emphasizes fitness through participation in a variety of individual and dual sports that can serve as lifetime fitness activities. Students test regularly on knowledge, skills, and fitness throughout the class. Grading is based upon mastery of skills, rules, regulations, and participation. Potential activities include tennis, badminton, paddle ball, bowling, golf, ultimate Frisbee, fitness testing, and others. This class may be repeated for credit.

Lifetime Fitness (FPHS only)

Semester, Grades 10, 11, 12

Course Number: HPE116

Dual Credit: No

Graduation Requirement: Physical Education

Prerequisites: Intro to PE

This class provides students with the opportunity to improve their fitness levels, improve self-esteem by creating a positive concept of themselves, and to have a better understanding of the importance of the role of physical activity in living a long, healthy life. This class consists of both aerobic and anaerobic workouts. Workout opportunities include floor aerobics, step, circuit, fitness days, muscular fitness, flexibility, and a chance to create personalized routines. This class may be repeated for credit.

Strength Training (FPHS only)

Semester, Grades 10, 11, 12

Course Number: HPE115

Dual Credit: No

Graduation Requirement: Physical Education

Prerequisites: Intro to PE

This physically demanding class is designed for students desiring to improve strength and endurance through a highly structured weight-lifting program. Participants develop an understanding of strength training and its effects on the mind and body. Grading is based upon mastery of skills, rules, regulations, participation, and record keeping. This class may be repeated for credit.

Team Sports (FPHS only)

Semester, Grades 10, 11, 12

Course Number: HPE118

Dual Credit: No

Graduation Requirement: Physical Education

Prerequisites: Intro to PE

This course emphasizes fitness through participation in a variety of team sports activities. Students test regularly on knowledge, skills, and fitness throughout the class. Grading is based upon mastery of skills, rules, regulations and participation. Potential activities include basketball, fleet ball, Frisbee football, football, hockey, volleyball, softball, soccer, track & field, and others. This class may be repeated for credit.

Unified PE

Semester, Grades 9, 10, 11, 12

Course Number: HPE100

Dual Credit: No

Graduation Requirement: Physical Education

Prerequisites: Teacher approval

This Physical Education class pairs student leaders/mentors with students in the Special Education program. Student leaders help students with disabilities access and engage in team/individual sports, cardiorespiratory endurance, and other physical education activities. Must have teacher approval before being added to the class.

AFJROTC Drill and Ceremonies (WHS only)

Semester, Grades 9, 10, 11, 12

Course Number: FLT611

Dual Credit: No

Graduation Requirement: CTE, Physical Education, Arts

Prerequisites: Must currently be enrolled in an AFJROTC academic course.

CTE Program Area: Skilled and Technical Sciences

In Drill and Ceremonies students will learn advanced drill & ceremonies and creatively develop exhibition drill maneuvers in preparation for several performances throughout the year. Students compete and are judged at Northwest Drill & Rifle League competitions. Students already enrolled in AFJROTC may also take this zero-hour course.

Fitness Specialist 1&2 (FPHS only)

Full year, Grades 11, 12

Course Number: HPE211/212

Dual Credit: Yes – CTE Dual Credit

Graduation Requirement: Physical Education, CTE

Prerequisites: Successful completion (C or better) in Intro to PE or teacher permission. Human Body Systems 1&2 (can be taken concurrently).

Fitness Specialist 1&2 prepares students to work in the fitness industry - in health and fitness clubs, wellness centers, public and private recreation facilities, hospitals, and corporate fitness programs. In this class students apply what they learn in the weight room with student athletes. With completion of this program, after graduation students will be able to gain personal fitness trainer certification. Students who earn a grade of 'C' (2.0) or better in this course can earn college credit. *Industry Recognized Credential: Adult and Pediatric First Aid/CPR/AED.*

Principles of Biomedical Science 1&2

Full year, Grades 9, 10, 11, 12

Course Number: SCI 115/116

Dual Credit: Yes – CTE Dual Credit

Graduation Requirement: Health, CTE, Science (Lab Science)

Prerequisites: None

Principles of Biomedical Science 1&2 investigates the human body systems and various health conditions, including heart disease, diabetes, sickle cell disease, hypercholesterolemia, and infectious diseases. Students determine the factors that led to the death of a fictional person and investigate lifestyle choices and medical treatments that might have prolonged the person's life. The activities and projects introduce students to human physiology, medicine, research processes, and bioinformatics. This course is designed to provide an overview of all the courses in the Biomedical Sciences program and lay the scientific foundation for subsequent courses. Students who earn a grade of 'C' (2.0) or better in this course can earn college credit.

Mathematics

Mathematics courses prepare students for postsecondary education and career success. Washington state requires three years of high school mathematics including Algebra I, Geometry, and a third year aligned with students' interests and postsecondary plans. FPS recommends students complete Algebra I, Geometry, and Algebra II/Modern Algebra II, with additional mathematics classes available for elective credit.

Basic Math 1&2

Full year, Grades 9, 10, 11, 12

Course Number: MTH 101/102

Dual Credit: No

Graduation Requirement: Mathematics

Prerequisites: IEP Determined

This course emphasizes intense mathematics instruction. The curriculum that is used focuses on whole number operations, fractions, decimals, and percentages as well as problem solving strategies that teach students how to apply the above skills. A high level of direct instruction and student participation is utilized in all Basic Math courses.

Basic Math 3&4

Full year, Grades 9, 10, 11, 12

Course Number: MTH 201/202

Dual Credit: No

Graduation Requirement: Mathematics

Prerequisites: IEP Determined

This course emphasizes intense mathematics instruction. The curriculum that is used focuses on whole number operations, fractions, decimals, and percentages as well as problem solving strategies that teach students how to apply the above skills. A high level of direct instruction and student participation is utilized in all Basic Math courses.

Pre-Algebra 1&2

Full year, Grades 9, 10, 11, 12

Course Number: MTH 301/302

Dual Credit: No

Graduation Requirement: Mathematics

Prerequisites: IEP Determined

Essentials for Algebra integrates basic skills with pre-algebra and algebra lessons. This program expands the students' basic skills knowledge to becoming firm in the areas of solving a variety of equations using Algebra, using a coordinate system, probability, and Geometry skills. Students learn to apply these skills through activities, projects and in the math curriculum. A high level of direct instruction and student participation is utilized in all Basic Math courses.

Pre-Algebra 3&4

Full year, Grades 9, 10, 11, 12

Course Number: MTH 401/402

Dual Credit: No

Graduation Requirement: Mathematics

Prerequisites: IEP Determined

Essentials for Algebra integrates basic skills with pre-algebra and algebra lessons. This program expands the students' basic skills knowledge to becoming firm in the areas of solving a variety of equations using Algebra, using a coordinate system, probability, and Geometry skills. Students learn to apply these skills through activities, projects and in the math curriculum. A high level of direct instruction and student participation is utilized in all Basic Math courses.

Algebra I 1&2

Full year, Grades 9, 10, 11, 12

Course Number: MTH111/112

Dual Credit: No

Graduation Requirement: Mathematics

Prerequisites: None

This year-long course is the extension of the ideas of arithmetic to more abstract forms. Algebra will continue to develop both number sense and algebraic reasoning. Students will work with concepts algebraically, numerically, graphically, and verbally. Expressions and equations begin the course with a large in-depth study of linear functions carrying most of the coursework. Non-linear functions are also explored in the latter half of the class.

Geometry 1&2

Full year, Grades 9, 10, 11, 12

Course Number: MTH211/212

Dual Credit: No

Graduation Requirement: Mathematics

Prerequisites: A grade of "C" or better in Algebra I 1&2

This is a year-long course that studies the in-depth properties of 2 and 3-dimensional figures. Students will learn about the relationships of points, lines, planes, triangles, quadrilaterals, and polygons using the interactions of unique, proven properties. Three dimensional shapes and trigonometry are also largely supported in this class. Logical thinking and proof, a form of reasoning that will help them to explain sequentially with valid rationales, are formally developed throughout the content.

Advanced Geometry 1&2 (FPHS only)

Full year, Grade 9

Course Number: MTH221/222

Dual Credit: No

Graduation Requirement: Mathematics

Prerequisites: Successful completion (B or better) in Algebra I 1&2

This course is a continuation of topics taught in Algebra 1&2 and Geometry. Critical thinking will be essential in covering concepts with greater depth and intensity. The course includes basic trigonometric functions and identities to help prepare students for Pre-Calculus.

Algebra II 1&2 (formerly Algebra 3&4 at FPHS; formerly Advanced Algebra at WHS)

Full year, Grades 9, 10, 11, 12

Course Number: MTH311/312

Dual Credit: No

Graduation Requirement: Mathematics

Prerequisites: Completion of Algebra I 1&2 and Geometry 1&2

This year-long course continues the foundation laid by Algebra I. Students will begin with complex solving and linear functions. However, the large portion of study is with non-linear functions and their unique properties. To finish the coursework, students have an introduction to trigonometric functions.

Modern Algebra II 1&2

Full year, Grades 9, 10, 11, 12

Course Number: MTH315/316

Dual Credit: No

Graduation Requirement: Mathematics

Prerequisites: Completion of Algebra I 1&2 and Geometry 1&2

The course will focus on algebraic understanding that is key for all students and will build that understanding through mathematical modeling that includes topics that are flexible and relevant to students. In addition to study of linear and non-linear functions, the course will include introductory data science and statistics. This course is equivalent to Algebra II.

Algebra II Advanced (FPHS only)

Full year, Grades 9, 10

Course number: MTH321/322

Dual Credit: No

Graduation Requirement: Mathematics

Prerequisites: Must have passed Algebra I 1&2 and Geometry 1&2 with a "C" or better or permission from math department

This course continues the foundation laid by Algebra 1, 2. Students will begin with complex solving and linear functions. However, the large portion of study will be with non-linear functions and their unique properties. To finish the coursework, students will have an introduction to trigonometric functions.

Bridge to College Mathematics

Full year, Grade 12

Course Number: MTH423/424

Dual Credit: No

Graduation Requirement: Mathematics

Prerequisites: Passing grade in Algebra II (formerly Algebra 3&4) or Modern Algebra II, has not taken Precalculus

This is a senior-level year-long math course designed for students scoring a Level 2 on the Smarter Balanced high school assessment (10th grade). Students who earn a "B" or better in the course are eligible to enter credit-bearing coursework in any of the State of Washington Community and Technical Colleges. The course is designed to prepare students for entrance into non-calculus pathway introductory college level mathematics courses. The course addresses key learning standards for high school including Algebra 1, statistics, geometry, and Algebra II standards essential for college- and career-readiness.

Precalculus 1&2

Full year, Grades 10, 11, 12

Course Number: MTH411/412

Dual Credit: No

Graduation Requirement: Mathematics

Prerequisites: Successful completion of Algebra II 1&2 (formerly Algebra 3&4)

This year-long course will include a more detailed approach to the concepts of functions and an introduction to calculus. Five main functions – linear, quadratic, power, exponential and trigonometric functions are further extended algebraically, numerically, verbally, and graphically. Included are topics of probability, logarithms, complex numbers, functions, systems of equations, extensive study of trigonometry and vectors.

Precalculus, College in the High School (FPHS only)

Full year, Grades 10, 11, 12

Course Number: MTH421/422

Dual Credit: Yes – College Course Completion

Graduation Requirement: Mathematics

Prerequisites: Successful completion (B or better) in Advanced Algebra II (formerly Algebra 3&4)

This course covers properties of functions, graphs, with an emphasis on linear, quadratic, trigonometric, exponential functions and their inverses. The emphasis of the course is on multi-step problem-solving involving real world application problems. This course is intended to be taken as a prep class to AP Calculus. Upon successful completion of the course, students can earn up to five credits in MATH120 from University Washington.

Aerospace Manufacturing 1&2

Full Year, Grades 10, 11, 12

Course Number: TEC213/214

Dual Credit: No

Graduation Requirement: Mathematics (3rd Year), CTE

Prerequisites: None

CTE Program Area: STEM

Aerospace Manufacturing 1&2 provides an overview of mechanical behavior and characteristics of aerospace materials including metal alloys, polymers, ceramics and composites. Students will receive hands-on

experience in machining, testing and assessing the properties and performance of aerospace materials. Students will apply the skills learned by designing and making various projects. Seniors who complete this course and earn an industry-recognized certificate will have an opportunity to interview local companies. *Industry Recognized Credential: CorePlus and OSHA 10.*

Aerospace Manufacturing Advanced 3&4

Full Year, Grades 11, 12

Course Number: TEC313/314

Dual Credit: No

Graduation Requirement: Mathematics (3rd Year), CTE

Prerequisites: Aerospace Manufacturing 1&2

CTE Program Area: STEM

Aerospace Manufacturing Advanced 3 & 4 prepares students to apply basic engineering principles and technical skills in support of engineers and other professionals engaged in developing, manufacturing and testing aircraft, spacecraft and their systems. This includes instruction in aircraft/spacecraft systems technology; design and development testing, prototype and operational testing; inspection and maintenance procedures, instrument calibration, test equipment operation; maintenance and report preparation. *Industry Recognized Credential: CorePlus.*

Construction Trades 1&2 (WHS only)

Full Year (within one semester, class meets every day) Grades 10, 11, 12

Course Number: ARC111/112

Dual Credit: Yes – CTE Dual Credit

Graduation Requirement: CTE and Mathematics (3rd Year)

Prerequisites: Physically fit to lift and carry heavy objects

CTE Program Area: Skilled and Technical Sciences

Construction Trades develops skills for a high demand, high wage career in construction. Students can earn a Construction Skills Certificate. Students will build a variety of carpentry and construction related projects to challenge the skills they develop in the class. Some of the topics covered are basic blueprint creation and reading, hand and power tool safety and use, framing, electrical wiring, and others. Students who earn a grade of 'C' (2.0) or better in this course can earn college credit. *Industry Recognized Credential: OSHA 10.*

Consumer Math 1&2

Full year, Grades 11, 12

Course Number: MTH601/602

Dual Credit: No

Graduation Requirement: Mathematics

Prerequisites: IEP Determined

This is a full year course designed to reinforce arithmetic skills for students through the study of consumer education topics. The course is intended to help students to develop into active, knowledgeable, and thoughtful consumers and to prepare them to engage in adult consumer activities with some skill and savvy, while understanding some of the mathematics that underlie their choices. Skills in the areas of whole numbers, fractions, decimals, percent, and Algebra are reviewed and taught as needed to deal with the consumer applications.

Financial Literacy 1&2

Full Year, Grades 11, 12

Course Number: BUS211/212

Dual Credit: Yes – CTE Dual Credit

Graduation Requirement: Mathematics (3rd Year), CTE

Prerequisites: None

CTE Program Area: Business and Marketing

Financial Literacy develops financial management skills to prepare students to make smart financial decisions, now and in the future. Topics include banking services, consumer credit, budgeting, saving, investing, stocks, insurance, retirement planning, how to buy a car and more. Students learn how to avoid financial mistakes by understanding your options and responsibilities and to be financially successful in the real world. Students who earn a grade of 'C' (2.0) or better in this course can earn college credit.

Introduction to Computer Science 1&2

Full Year, Grades 9, 10, 11, 12

Course Number: TEC113/114

Dual Credit: Yes – CTE Dual Credit

Graduation Requirement: Mathematics (3rd Year), CTE

Prerequisites: None

CTE Program Area: Business and Marketing

Introduction to Computer Science covers the foundations of computer science and basic programming, with an emphasis on helping students develop logical thinking and problem-solving skills. At a time when computer science affects how people work and live, Computer Science empowers students grades 9-12 to become creators, instead of merely consumers. Students who earn a grade of 'C' (2.0) or better in this course can earn college credit.

Introduction to Engineering Design 1&2

Full Year, Grades 9, 10, 11, 12

Course Number: TEC111/112

Dual Credit: Yes – CTE Dual Credit

Graduation Requirement: Mathematics (3rd Year), CTE

Prerequisites: None

CTE Program Area: STEM

Introduction to Engineering Design 1&2 explores the engineering design process, applying math, science, and engineering standards to hands-on projects. Students work both individually and in teams to design solutions to a variety of problems using 3-D modeling software and apply their skills utilizing 3-D printers and laser engravers. Students who earn a grade of 'C' (2.0) or better in this course can earn college credit.

Statistics 1&2

Full year, Grades 10, 11, 12

Course Number: MTH413/414

Dual Credit: No

Graduation Requirement: Mathematics

Prerequisites: Algebra II or Modern Algebra II (formerly Algebra 3&4)

This course introduces students to the world of data analysis. Students collect data using surveys and experiments and interpret the data to make informed decisions. Topics include the use of graphs such as histograms, stem plots, time plots, and scatter plots to display data, using numbers such as median, mean, and standard deviation to describe data, and evaluating data distributions. Students examine relationships using correlations and least square regression.

AP Calculus A/B 1&2

Full year, Grades 11, 12

Course Number: MTH631/632

Dual Credit: Yes – Credit by Exam

Graduation Requirement: Mathematics

Prerequisites: Successful completion of Precalculus or Advanced Precalculus and/or a 3 or higher on SBA

This year-long course explores the concepts, methods, and applications of differential and integral calculus. Students learn to determine expressions and values using mathematical procedures and rules, translate mathematical information from a single representation or across multiple representations, justifying reasoning and solutions, and use of correct notation, language, and mathematical conventions to communicate results or solutions.

AP Calculus B/C 1&2

Full year, Grade 12

Course Number: MTH633/634

Dual Credit: Yes – Credit by Exam

Graduation Requirement: Mathematics

Prerequisites: Successful completion (B or better) in Calculus 1&2, SBA score of 3 or better.

Explore the concepts, methods, and applications of differential and integral calculus, including topics such as parametric equations, polar coordinates, and vector-valued functions, infinite sequences, and series. Students perform experiments and investigations and solve problems. Students learn to determine expressions and values using mathematical procedures and rules, translate mathematical information from a single representation or across multiple representations, justifying reasoning and solutions, and to use correct notation, language, and mathematical conventions to communicate results or solutions.

AP Computer Science 1&2

Full Year, Grades 10, 11, 12

Course Number: TEC231 / 232

Dual Credit: Yes – Credit by Exam & CTE Dual Credit

Graduation Requirement: Mathematics (3rd Year), CTE

Prerequisites: Introduction to Computer Science or teacher permission.

CTE Program Area: Business and Marketing

AP Computer Science 1&2 focuses on the general writing and implementation of generic and customized programs to drive operating systems and that generally prepares individuals to apply the methods and procedures of software design and programming to software installation and maintenance. Includes instruction in software design, low- and high-level languages and program writing; program customization and linking; prototype testing; troubleshooting; and related aspects of operating systems and networks. Students who earn a grade of 'C' (2.0) or better in this course can earn college credit.

AP Statistics 1&2 (WHS only)

Full year, Grade 12

Course Number: MTH635/636

Dual Credit: Yes – Credit by Exam

Graduation Requirement: Mathematics

Prerequisites: A grade of "C" or better in Algebra II or Modern Algebra II (formerly Algebra 3&4) and Precalculus 1&2

Students will learn about the major concepts and tools used for collecting, analyzing, and drawing conclusions from data. There are four themes evident in the content, skills and assessment in the course: exploring data, sampling and experimentation, probability and simulation, and statistical inference. Skills students will learn selecting methods for collecting or analyzing data for statistical inference, describing patterns, trends, associations, and relationships in data, random phenomena, and develop an explanation or justify a conclusion using evidence from data, definitions, or statistical inference.

Statistics, Society, and Decisions, College in the High School (FPHS only)

Full year, Grade 12

Course Number: MTH645/646

Dual Credit: Yes – College Course Completion

Graduation Requirement: Mathematics

Prerequisites: A grade of "C" or better in Algebra II 1&2 or Modern Algebra II 1&2, or Precalculus 1&2

The statistical revolution has dramatically changed how our society makes decisions. Students will examine how statistics is used in diverse fields and current ethical and social issues surrounding the use of statistics and data. Upon successful completion of the course, students can earn up to five credits in MATH211 from Central Washington University.

Calculus I, College in the High School (FPHS only)

Full year, Grades 11, 12

Course Number: MTH641/642

Dual Credit: Yes – College Course Completion

Graduation Requirement: Mathematics

Prerequisites: A grade of "C" or better in Algebra II (formerly Algebra 3&4) and Precalculus 1&2

Students will learn theory, techniques, and applications of differentiation and integration of the elementary functions. Upon successful completion of the course, students can earn up to five credits in MATH172 from Central Washington University.

Science

Science courses prepare students for a variety of postsecondary education and career options. Washington state requires three years of high school science including two lab science courses. FPS has identified the following recommended course sequence: Biology, Physical Science, and Chemistry. By taking these courses, students will learn our science standards and be prepared for success on the state science exam (Washington Comprehensive Assessment of Science - WCAS). Students may choose a third-year science course aligned with their interests and postsecondary plans. Additional science classes are available for elective credit.

Biology 1&2

Full year, Grade 9

Course Number: SCI111/112

Dual Credit: No

Graduation Requirement: Science (Lab)

Prerequisites: None

This course investigates the characteristics of life and living things from the simplest through the most complex animals and plants. This course is specifically designed to meet Life Science portion of the Washington State K-12 Science Learning Standards.

Eco System Design 1&2

Full Year (2 period class), Grades 9, 10, 11, 12

Course Number: SCI621/622

Dual Credit: Yes – CTE Dual Credit

Graduation Requirement: Science (Biology, Lab Science) *and* CTE

Prerequisites: None

CTE Program Area: Agriculture Sciences

Eco System Design 1&2 studies environmental science and ecosystems through agriculture, using the FPSD Farm as a living laboratory. The course is designed as a hands-on course that digs into systems thinking, biology, and ecology concepts while learning practical skills of growing food, business, and leadership skills. Students access state-of-the-art tools and resources on the Franklin Pierce Farm site and learn how to design sustainable systems by growing food from seed to harvest. This class is lab and activities are held outside on the farm. Students who earn a grade of 'C' (2.0) or better in this course can earn college credit. *Industry Recognized Credential: Food Handlers Permit.*

Advanced Biology

Full Year, Grade 9

Course Number: SCI121/122

Dual Credit: No

Graduation Requirement: Science (Lab)

Prerequisites: None

This course investigates the characteristics of life and living things from the simplest through the most complex animals and plants. This course is specifically designed to meet the Life Science portion of the Washington State K-12 Science Learning Standards. This course prepares students to take AP Biology during their junior or senior year.

Physical Science 1&2

Full year, Grade 10

Course Number: SCI211/212

Dual Credit: No

Graduation Requirement: Science (Lab)

Prerequisites: None

This course uses laboratory practices to explore physical, earth, and space sciences. Through modeling, engineering, and design, students discover the interactions between matter and energy through the lens of physics, climate, geology, and astronomy.

Physical Science Advanced 1&2

Full year, Grades 9, 10

Course Number: SCI221/222

Dual Credit: No

Graduation Requirement: Science (Lab)

Prerequisites: placement by counselor/teacher recommendation

This course uses laboratory practices to explore physical, earth, and space sciences. Through modeling, engineering, and design, students discover the interactions between matter and energy through the lens of physics, climate, geology, and astronomy. This course prepares students to take AP science courses.

Chemistry 1&2

Full year, Grades 10, 11, 12

Course Number: SCI311/312

Dual Credit: No

Graduation Requirement: Science (Lab)

Prerequisites: Pass Biology and Physical Science or Advanced Physical Science

This course explores the composition, structure and properties of substances and the transformations that they undergo. This course primarily covers the physical science core idea: Matter and Its Interactions. It covers some of the core earth and space core ideas: Earth's Place in the Universe, Earth's Systems, and Earth and Human Activity. It covers the two engineering core ideas: Engineering Design and Links Among Engineering, Technology, Science, and Society.

Chemistry Advanced 1&2

Full year, Grade 11

Course Number: SCI321/322

Dual Credit: No

Graduation Requirement: Science (Lab)

Prerequisites: Received a 'B' or better in Biology or Physical Science, or by student request.

This course is a study of matter and energy in the universe. It is a challenging course due to the scale of atoms and molecules and trying to understand the tiny particles that make the universe. Students apply measurements and math to help represent atoms, molecules, and chemical reactions. Advanced chemistry challenges students with greater depth on many topics as well as more frequent and challenging applications of math. Advanced Chemistry is recommended for students interested in AP Chemistry, AP Physics, or AP Biology their senior year. This course addresses physical science Next Generation Science Standards.

Physics

Full year, Grade 12

Course Number: SCI411/412

Dual Credit: No

Graduation Requirement: Science (Lab)

Prerequisites: Chemistry, Advanced Chemistry and concurrently Algebra 2 or above

This course deals with matter and energy and their interactions. It provides practical experience in the application of math to understand how things work physically in our world and universe.

Principles of Biomedical Science 1&2

Full Year, Grades 9, 10, 11, 12

Course Number: SCI115/116

Dual Credit: Yes – CTE Dual Credit

Graduation Requirement: Science (Lab), CTE, Health

Prerequisites: None

CTE Program Area: Health Sciences

Principles of Biomedical Science 1&2 investigates the human body systems and various health conditions, including heart disease, diabetes, sickle cell disease, hypercholesterolemia, and infectious diseases. Students determine the factors that led to the death of a fictional person and investigate lifestyle choices and medical treatments that might have prolonged the person's life. The activities and projects introduce students to human physiology, medicine, research processes, and bioinformatics. This course is designed to provide an

overview of all the courses in the Biomedical Sciences program and lay the scientific foundation for subsequent courses. Students who earn a grade of 'C' (2.0) or better in this course can earn college credit.

Human Body Systems 1&2

Full Year, Grades 10, 11, 12

Course Number: SCI215/216

Dual Credit: Yes – CTE Dual Credit

Graduation Requirement: Science (Lab), CTE

Prerequisites: None

CTE Program Area: Health Sciences

Human Body Systems 1&2 prepares students to examine the interactions of body systems as they explore identity, communication, power, movement, protection, and homeostasis. Students design experiments investigate the structures and functions of the human body and use data acquisition software to monitor body functions such as muscle movement, reflex and voluntary action, and respiration. Exploring science in action, students build organs and tissues on a skeletal manikin, work through interesting real-world cases, and play the roles of biomedical professionals to solve medical mysteries. Students who earn a grade of 'C' (2.0) or better in this course can earn college credit.

Medical Interventions 1&2

Full Year, Grades 11, 12

Course Number: SCI315/316

Dual Credit: Yes – CTE Dual Credit

Graduation Requirement: Science (Lab), CTE

Prerequisites: Human Body Systems 1&2

CTE Program Area: Health Sciences

Medical Interventions investigates a variety of interventions involved in the prevention, diagnosis and treatment of disease as they follow the life of a fictitious family. Students learn how to screen and fight infection; screen and evaluate the code in human DNA; prevent, diagnose and treat cancer; and prevail when the organs of the body begin to fail. Through these scenarios, students are exposed to a range of interventions related to immunology, surgery, genetics, pharmacology, medical devices, and diagnostics. Students who earn a grade of 'C' (2.0) or better in this course can earn college credit.

Biomedical Innovation 1&2

Full Year, Grades 11, 12

Course Number: SCI415/416

Dual Credit: No

Graduation Requirement: CTE and Science (L)

Prerequisites: Medical Interventions 1&2

CTE Program Area: Health Sciences

Biomedical Innovation is the final course in the Biomedical Science sequence of classes where students build on the knowledge and skills gained from previous courses to design innovative solutions for the most pressing health challenges of the 21st century. Students address topics ranging from public health and biomedical engineering to clinical medicine and physiology. Students work on an independent design project with a mentor or advisor from a university, medical facility, or research institution.

Astronomy (FPHS only)

One semester, Grades 11, 12

Course Number: SCI635

Dual Credit: No

Graduation Requirement: Elective

Prerequisites: Passed Physical Science

This is an elective science course on the study of space and the solar system. This includes the processes that have occurred and continue to occur that change our universe. Topics covered include The Big Bang Theory, The Life Cycle of Stars and Galaxies, The Sun, and The Planets and their Moons.

Food Justice in Action

Full Year (2 periods every day), Grades 10, 11, 12

Course Number: SCI651/652

Dual Credit: Yes – CTE Dual Credit

Graduation Requirement: CTE (2), Science (Lab) *and* English

Prerequisites: Intake check-in with Instructor

CTE Program Area: Agricultural Sciences

Everybody eats! Food Justice in Action 1&2 is a four-period interdisciplinary program on the ten-acre school district farm. The course uses food and food justice as the starting place for conversations, reading, writing, and thinking critically around current and relevant social issues. In community, this course explores what it means to be in right relationship with the land and one another – focusing on Identity, shared history, equitable food access, climate change, social justice, leadership and more. This work makes a difference! Through hands on outdoor learning, students learn real world skills in community leadership, food production, and activism while being part of a small, tight knit group feeding the community nourishing food. If you enjoy hands on, project-based learning, like to spend time outside, and want to put knowledge about environmental science, food justice, and our communities into action, this program is for you! *Industry Recognized Credential: Food Handlers Permit.*

Forensic Science 1&2 (FPHS only)

Full Year, Grade 10, 11, 12

Course Number: SCI641/642

Dual Credit: No

Graduation Requirement: Science (Lab)

Prerequisites: None

Forensic Science is the application of biological, physical, biomedical, and social sciences to analyze and evaluate physical evidence, human testimony, and criminal suspects. Students properly document a crime scene, collect evidence, conduct lab processes, and analyze evidence. The course includes instruction in forensic medicine and laboratory technology, anthropology, fingerprint technology, crime scene analysis, examinations in autopsy, patterns, and documents, application of laws and regulations as well as professional careers, standards, and ethics.

Global Challenges 1&2 (WHS only)

Full Year, Grades 9, 10, 11, 12

Course Number: SCI611/612

Dual Credit: Yes – CTE Dual Credit

Graduation Requirement: Science (Lab), CTE

Prerequisites: None

CTE Program Area: STEM

Global Challenges 1&2 explores the most pressing environmental and social issues of the 21st century. Students are encouraged to problem-solve, critically analyze, and debate topics ranging from climate change, species loss, pollution, and the food system. Students create and design locally relevant solutions to solve global issues. This course is designed to create global citizens equipped with the knowledge to be change makers within their community. Students who earn a grade of 'C' (2.0) or better in this course can earn college credit.

Marine Biology (FPHS only)

One semester, Grades 11,12

Course Number: SCI633

Dual Credit: No

Graduation Requirement: Elective

Prerequisites: Algebra 1&2 and Biology 1&2

This is an elective science course investigating the ocean environment. The adaptations, interactions, classification, structure, and function of marine organisms as well as the influence of their habitat on these organisms will be emphasized. Topics covered: The role of the marine environment, human impacts on the marine environment, and how the economy depends on the ocean.

Restoration Ecology (WHS only)

Semester, Grades 9, 10, 11, 12

Course Number: SCI627

Dual Credit: YES – CTE Dual Credit

Graduation Requirement: Science (Lab), CTE

Prerequisites: None

CTE Program Area: Agriculture Sciences

Restoration Ecology utilizes the on-campus wetland as a living laboratory. Students engage in real world citizen science to understand the social, ecological, and cultural importance of natural spaces to the community. Students engage in active restoration work including removal of invasive species, planting of native vegetation, and on-going wildlife surveys. This class is a lab science and activities will predominately take place outdoors.

Science Research (WHS only)

One Semester or Full Year, Grades 9, 10, 11, or 12

Course Number: SCI625/626

Dual Credit: No

Graduation Requirement: Science (Lab, 3rd year)

Prerequisites: None

This course assists students in designing and completing an independent research project on a science topic of their choice. Students gain skills in lab techniques necessary for conducting experiments, as well as technical writing. Students create a poster and write a science journal article detailing their findings, as well as present their research. This course greatly assists students in their preparation for college-level research and is highly recommended for students interested in a science or medical career, or who simply enjoy science.

AP Biology 1&2

Full year, Grades 10, 11, 12

Course Number: SCI131/132

Dual Credit: Yes – Credit by Exam

Graduation Requirement: Science (Lab)

Prerequisites: Successful completion of Advanced Biology 1&2, Advanced Physical Science 1&2, Chemistry 1&2 or Advanced Chemistry 1&2

This course is designed to be the equivalent of a year-long introductory biology course taken at a 4-year college. It differs significantly from lower-level science classes with respect to the depth and breadth of concepts covered, the kind of textbook used, and the kind of laboratory activities completed. This course greatly assists students in their preparation for college study and is highly recommended for students interested in a science or medical career, or who simply enjoy Biology.

AP Chemistry 1&2

Full year, Grades 11, 12

Course Number: SCI331/332

Dual Credit: Yes – Credit by Exam

Graduation Requirement: Science (Lab)

Prerequisites: B or better in Chemistry or AP Biology and Algebra II

This course cultivates students understanding of chemistry through inquiry-based investigations, as they explore content such as: atomic structure, intermolecular forces and bonding, chemical reactions, kinetics, thermodynamics, and equilibrium. Practices developed include models and representations, question and method, representing data and phenomena, model analysis, mathematical routines, and argumentation.

AP Environmental Science 1&2 (FPHS only)

Full year, Grade 12

Course Number: SCI433/434

Dual Credit: Yes – Credit by Exam

Graduation Requirement: Science (Lab)

Prerequisites: Biology or Advanced Biology, Physical Science or Advanced Physical Science and Chemistry

This course is designed to engage students with the scientific principles, concepts, and methodologies required to understand the interrelationships within the natural world. The course requires that students identify and analyze natural and human-made environmental problems, evaluate the relative risks associated with these problems, and examine alternative solutions for resolving or preventing them. Environmental science is interdisciplinary, embracing topics from geology, biology, environmental studies, environmental science, chemistry, and geography. Practices students develop include concept explanation, visual representations, text analysis, scientific experiments, data analysis, mathematical routines, and environmental solutions.

AP Physics 1&2 (FPHS only)

Full year, Grade 12

Course Number: SCI431/432

Dual Credit: Yes – Credit by Exam

Graduation Requirement: Science (Lab)

Prerequisites: Geometry and concurrently in Algebra 3 & 4 or above

AP Physics is an algebra-based, introductory college-level physics course. Students cultivate their understanding of physics through inquiry-based investigations as they explore these topics: kinematics, dynamics, circular motion and gravitation, energy, momentum, simple harmonic motion, torque and rotational motion, electric charge and electric force, DC circuits, and mechanical waves and sound.

Social Studies

Franklin Pierce Schools require high school graduates to successfully complete three credits of social studies including coursework in World History first, U.S. History second, and Contemporary World Problems (or Ethnic Studies) and Civics third. Additional social studies classes are available for elective credit.

Washington State History

Semester, Grades 9, 10, 11, 12

Course Number: SST611

Dual Credit: No

Graduation Requirement: Social Studies

Prerequisites: None

Students examine Washington state, from pre-European contact to the present. The study of Washington state includes an examination of the state constitution and key treaties, including popular and tribal sovereignty issues. Through additional study of migration, differing cultural experiences, and human interactions with the environment, students develop enduring understandings of the core concepts and ideas in civics, economics, geography, and history.

Advanced Placement Human Geography (FPHS only)

Full year, Grade 9

Course Number: SST131/132

Dual Credit: Yes - Credit by Exam

Graduation Requirement: Elective

Prerequisites: None

This course introduces students to the systematic study of patterns and processes that have shaped human understanding, use, and alteration of Earth's surface. Students employ spatial concepts and landscape analysis to examine socioeconomic organization and its environmental consequences. They also learn about the methods and tools geographers use in their research and applications. The curriculum reflects the goals of the National Geography Standards (2012).

Introduction to Psychology (WHS only)

Semester, Grades 9, 10

Course Number: SST630

Dual Credit: No

Graduation Requirement: Elective

Prerequisites: None

Use psychology to better understand your own life. Learn a wide variety of information that is relevant to you right now. How does adolescence change you? What is your personality like, and how does it affect your behavior? How do groups affect your behavior as an individual? What mistakes do you often make when thinking, studying, and learning—and how can you be a better student? Why are you attracted to some people and not others? How can you describe stress, anxiety and depression, and what strategies can you use to deal with these challenges? What is optimism and how can it make your life better? At the end of the semester, you'll complete a project exploring a specific career in psychology and plan what to do in high school to achieve that path.

World History 1&2

Full year, Grades 9, 10 (WHS); 10 (FPHS)

Course Number: SST211/212

Dual Credit: No

Graduation Requirement: Social Studies

Prerequisites: None

In ninth and tenth grades, students apply their deeper understanding of social studies concepts on a global scale. The recommended context in the ninth and tenth grades is primarily modern world history and geography, from 1450 to the present. Students explore major themes and developments that shaped the modern world, colonization, and imperialism; government and revolution; economic transformation; and war and conflict.

World History Topics: History of Asia and the Pacific Islands (WHS only)

Semester, Grades 9, 10

Course Number: SST213

Dual Credit: No

Graduation Requirement: Social Studies

Prerequisites: None

The course addresses the culture, history, and geography of different regions in Asia and Oceania from 1450 to the present. Students explore differences in regional histories and the interaction of these cultures with other regions. Major themes include an exploration of religion and culture, economic patterns in each region, the legacy of colonization, and political changes over time. (Students at WHS will complete World History 1, then choose a World History Topics course for their second semester of world history.)

World History Topics: Latin American History (WHS only)

Semester, Grades 9, 10

Course Number SST214

Dual Credit: No

Graduation Requirement: Social Studies

Prerequisites: None

The course addresses Latin American culture, history, and geography of different regions from 1450 to the present. Major themes include an exploration of indigenous communities from the 1400s-1700, religion and culture, economic patterns in each region, the legacy of colonization, and social transformations. (Students at WHS will complete World History 1, then choose a World History Topics course for their second semester of world history.)

Advanced Placement World History 1&2 (FPHS only)

Full year, Grade 10

Course Number: SST231/232

Dual Credit: Yes — Credit by Exam

Graduation Requirement: Social Studies

Prerequisites: None

In AP World History: Modern, students investigate significant events, individuals, developments, and processes from 1200 to the present. Students develop and use the same skills, practices, and methods employed by historians: analyzing primary and secondary sources; developing historical arguments; making historical connections; and utilizing reasoning about comparison, causation, and continuity and change over time. The course provides six themes that students explore throughout the course to make connections among historical developments in different times and places: humans and the environment, cultural developments and interactions, governance, economic systems, social interactions and organization, and technology and innovation.

World History from 1500 1&2, College in the High School (WHS only)

Full year, Grade 10

Course Number: SST233/234

Dual Credit: Yes — College Course Completion

Graduation Requirement: Social Studies

Prerequisites: None

This course examines the emergence of well-organized societies from 1450 to the present. The course focus is on distinct cultural traditions in the Americas, Asia, The Pacific, Europe, and Africa. Themes include social structures, politics, interactions with the environment, culture, religion, and trade. Upon successful completion of the course, students can earn up to five credits in HIST103 from Eastern Washington University.

Sociology 1&2 (FPHS only)

Full year, Grades 10, 11, 12

Course Number: SST615/616

Dual Credit: No

Graduation Requirement: Elective

Prerequisites: None

Sociology is the study of social life, social change, and the impacts of sociology on human behavior. In this course, students get a brief overview of several different topics in Sociology such as: family, politics, education, race, gender, and social classes.

United State History 1&2

Full year, Grade 11

Course Number: SST311/312

Dual Credit: No

Graduation Requirement: Social Studies

Prerequisites: None

In eleventh grade, students have the intellectual and social capacity to deepen their study of history. Students explore major themes and topics in US History from Reconstruction forward. Themes include Migration and Conflict; History of Indigenous Tribes; Growth of US Global Power; Government and the Economy; and Social Transformation from a variety of perspectives.

United States History to 1877, College in the High School

Semester, Grade 11

Course Number: SST333

Dual Credit: Yes — College Course Completion

Graduation Requirement: Social Studies

Prerequisites: None

This course examines the changes and continuities of early American history from the development of colonial societies to the end of Reconstruction. Following a chronological timeline, students evaluate and discuss historical voices in national events such as the American Revolution and the Civil War. Students examine primary and/or secondary sources to produce a research project. Upon successful completion of the course, students can earn up to five credits in HIST111 from Eastern Washington University.

United States History since 1877, College in the High School

Semester, Grade 11

Course Number: SST334

Dual Credit: Yes — College Course Completion

Graduation Requirement: Social Studies

Prerequisites: None

This course examines changes and continuities of modern American history from the Reconstruction era to the present day. Following a chronological timeline, students evaluate and discuss historical voices in national events such as Progressivism, World War II, the Civil Rights Movement, and globalization. Students examine secondary and/or primary sources to produce a research project. Upon successful completion of the course, students can earn up to five credits in HIST112 from Eastern Washington University.

Ethnic Studies I

Semester, Grades 11, 12

Course Number: SST617

Dual Credit: No

Graduation Requirement: Social Studies

Prerequisites: None

Ethnic Studies focuses on the experiences of Native Americans, African Americans, Asian Americans, Latinxs, and Chicanxs, and other racialized people in the US. The course examines how race and racism have been, and continue to be, central to shaping, understanding, and reacting to American society. As we do this work, we also explore how these ideas create and concentrate economic, political, and social power, and how this in turn leads to inequalities. The objective of this work is for the students to gain consciousness about their personal connections to local and national history, and of their own potential as agents of social justice, civic responsibility, and cultural change.

Ethnic Studies II

Semester, Grade 12

Course Number: SST618

Dual Credit: No

Graduation Requirement: Elective

Prerequisites: Ethnic Studies I

Ethnic Studies II deepens students' understanding of how race and racism have been, and continue to be, central to shaping, understanding, and reacting to American society. Students continue to explore how these ideas create and concentrate economic, political, and social power, and how this in turn leads to inequalities. Students create a community action project highlighting their connections to local and national history, and developing their potential as agents of social justice, civic responsibility, and cultural change.

Civics

Semester, Grade 12

Course Number: SST411

Dual Credit: No

Graduation Requirement: Social Studies

Prerequisites: None

In Civics, students examine local, state, tribal, and national government and how the state and federal constitutions govern the rights and responsibilities of all residents and citizens in Washington and the rest of the United States. Students should graduate ready to become active citizens and leaders of their communities. This course fulfills the Washington State stand-alone Civics graduation requirement.

Contemporary World Problems

Semester, Grade 12

Course Number: SST412

Dual Credit: No

Graduation Requirement: Social Studies

Prerequisites: None

In CWP, students examine global themes rooted in environmental issues, economic development, human rights, and civic action and responsibility, by examining current events and primary documents from around the world. Students should graduate ready to become active citizens and leaders of their communities, the nation, and the world.

Street Law (FPHS only)

Semester, Grade 12

Course Number: SST911

Dual Credit: No

Graduation Requirement: Elective

Prerequisites: None

Street Law examines the workings of the U.S. criminal and civil justice systems, including providing an understanding of civil and criminal law and the legal process, the structure and procedures of courts, and the role of various legal or judicial agencies.

Advanced Placement Psychology 1&2

Full Year, Grades 11, 12

Course Number: SST633/634

Dual Credit: Yes — Credit by Exam

Graduation Requirement: Elective

Prerequisites: None

The AP Psychology course introduces students to the systematic and scientific study of human behavior and mental processes. While considering the psychologists and studies that have shaped the field, students explore and apply psychological theories, key concepts, and phenomena associated with such topics as the biological bases of behavior, sensation, and perception, learning and cognition, motivation, developmental psychology, testing and individual differences, treatments of psychological disorders, and social psychology. Throughout the course, students employ psychological research methods, including ethical considerations, as they use the scientific method, evaluate claims, and evidence, and effectively communicate ideas.

Advanced Placement United States Government and Politics

Full year, Grade 12

Course Number: SST431/432

Dual Credit: Yes — Credit by Exam

Graduation Requirement: Social Studies

Prerequisites: None

AP U.S. Government and Politics provides a college-level, nonpartisan introduction to key political concepts, ideas, institutions, policies, interactions, roles, and behaviors that characterize the constitutional system and political culture of the United States. Students study U.S. foundational documents, Supreme Court decisions, and other texts and visuals to gain an understanding of the relationships and interactions among political institutions, processes, and behaviors. They also engage in disciplinary practices that require them to read and interpret data, make comparisons and applications, and develop evidence-based arguments. In addition, they will complete a political science research or applied civics project.

Special Education

Basic Math 1&2

Grade: 9, 10, 11, 12

Course Number: MTH 101/102

Dual Credit: No

Graduation Requirement: Mathematics

Prerequisites: IEP determined

This course emphasizes intense mathematics instruction. The curriculum that is used focuses on whole number operations, fractions, decimals, and percentages as well as problem solving strategies that teach students how to apply the above skills. A high level of direct instruction and student participation is utilized in all Basic Math courses.

Basic Math 3&4

Grade: 9, 10, 11, 12

Course Number: MTH 201/202

Dual Credit: No

Graduation Requirement: Mathematics

Prerequisites: IEP determined

This course emphasizes intense mathematics instruction. The curriculum that is used focuses on whole number operations, fractions, decimals, and percentages as well as problem solving strategies that teach students how to apply the above skills. A high level of direct instruction and student participation is utilized in all Basic Math courses.

Community Based Learning 1&2

Full Year, Grades 10, 11, 12

Course Number: ELE301/302

Dual Credit: No

Graduation Requirement: Elective

Prerequisites: Student, parent, & teacher permission, IEP determined

The Community Based Teaching (CBT) Program is a competency-based, experiential learning environment that instills and increases a learner's social skills. The goal of the program is to create functional citizens that will have the necessary skills for employment, education enhancement, and life competencies for the 21st century: Life-long learning, personal accountability, self-responsibility, and self-confidence. Learners will become familiar with basic occupational skills, as well as the importance of teamwork, positive communications, positive human relations, job market, leadership, and self-improvement skills in academic and occupational settings (Special Education Pre-qualification.)

Consumer Math 1&2

Full year, Grades 11, 12

Course Number: MTH601/602

Dual Credit: No

Graduation Requirement: Mathematics

Prerequisites: IEP Determined

This is a full year course designed to reinforce arithmetic skills for students through the study of consumer education topics. The course is intended to help students to develop into active, knowledgeable, and thoughtful consumers and to prepare them to engage in adult consumer activities with some skill and savvy, while understanding some of the mathematics that underlie their choices. Skills in the areas of whole numbers, fractions, decimals, percent, and Algebra are reviewed and taught as needed to deal with the consumer applications.

Language Arts 1&2

Full year, Grades 9, 10, 11, 12

Course Number: Grade 9=ENG101/102

Grade 10=ENG 201/202

Grade 11=ENG 301/302

Grade 12=ENG 401/402

Dual Credit: No

Graduation Requirement: English

Prerequisites: IEP determined

This course emphasizes intense writing and reading instruction. The Jane Schaeffer writing technique, Language! Curriculum, and/or reasoning and writing curriculum will be used to strengthen literacy skills. A high level of direct instruction and student participation is utilized in all Language Arts courses.

Learning Strategies 1&2

Full Year, Grades 9, 10

Course Number: ELE103/104

Dual Credit: No

Graduation Requirement: Elective

Prerequisites: Student, parent, & teacher permission, IEP determined

This course provides students with essential skills needed to be successful and productive in the workplace with a focus on appropriate work habits and behavior, maintaining & securing employment. Supporting instruction in reading & math is included. The course addresses the question, "What skills must I have to become an employable & effective worker?"

Learning Strategies Advanced 1&2

Full Year, Grades 11, 12

Course Number: ELE105/106

Dual Credit: No

Graduation Requirement: Elective

Prerequisites: Student, parent, & teacher permission, IEP determined

This course provides students with important skills needed to be successful and productive in the workplace. It addresses the question, "What skills must I have to become an employable & effective worker?" This course focuses on knowing, planning, and selecting occupation possibilities. Appropriate work habits and behavior, as well as maintaining & securing employment, are addressed along with reading & math instruction.

Pre-Algebra 1&2

Grade: 9, 10, 11, 12

Course Number: MTH 301/302

Dual Credit: No

Graduation Requirement: Mathematics

Prerequisites: IEP determined

Essentials for Algebra integrates basic skills with pre-algebra and algebra lessons. This program expands the students' basic skills knowledge to becoming firm in the areas of solving a variety of equations using Algebra, using a coordinate system, probability, and Geometry skills. Students learn to apply these skills through activities, projects and in the math curriculum. A high level of direct instruction and student participation is utilized in all Basic Math courses.

Pre-Algebra 3&4

Grade: 9, 10, 11, 12

Course Number: MTH 401/402

Dual Credit: No

Graduation Requirement: Mathematics

Prerequisites: IEP determined

Essentials for Algebra integrates basic skills with pre-algebra and algebra lessons. This program expands the students' basic skills knowledge to becoming firm in the areas of solving a variety of equations using Algebra, using a coordinate system, probability, and Geometry skills. Students learn to apply these skills through activities, projects and in the math curriculum. A high level of direct instruction and student participation is utilized in all Basic Math courses.

Reading Lab (Read to Achieve) 1&2

Full Year, Grades 9, 10, 11, 12

Course Number: ENG501/502

Dual Credit: No

Graduation Requirement: English

Prerequisites: IEP determined

The Read to Achieve program is based on a proven approach to improving comprehension. Read to Achieve boosts achievement with explicit reading for understanding instruction. With *Comprehending Content-Area Text*, students effectively read science and social studies texts, take notes from textbooks and classroom lectures, and learn real world study skills and work strategies. With *Comprehending Narrative Text* students effectively read conceptually challenging text, capture main idea, key concepts, and details, and engage in high quality open discussions of content.

Support Center I 1&2

Full year, Grades 9, 10, 11, 12

Course Number: ELE201/202

Dual Credit: No

Graduation Requirement: Elective

Prerequisites: IEP determined

The Support Center is designed for students with moderate to severe disabilities at 9th grade through the age of 21. The program prepares students for post-high school living. The curriculum integrates functional academics with work-related and daily living skills. The curriculum also provides many opportunities for hands on experiences and incorporates cooperative learning principles. This course works to develop self-advocacy skills and independence in all students while addressing the critical competencies students need to be productive individuals.

Students in the first four years of high school are in Phase I (Support Center I). Their goals are to work on functional academics, explore work, postsecondary education, independent living, and social-leisure options. They are active participants in the high school culture. Although students spend most of their time in the support center class, most will also attend general education classes.

Support Center II 1&2

Full year, Grades 11, 12+

Course Number: ELE 203/204

Dual Credit: No

Graduation Requirement: Elective

Prerequisites: IEP determined

Students in their last 3-4 years of high school, ages 18-21 years, focus on obtaining postsecondary employment, residential, and leisure options in Phase II (Support Center II). School reflects the student's future as much as possible. Students participate in community activities rather than high school events, developing linkages with adult agencies, securing options for postsecondary employment, and developing community supports.

Tools for Success 1&2

Full Year, Grades 9, 10, 11, 12

Course Number: ELE101/102

Dual Credit: No

Graduation Requirement: Elective

Prerequisites: Student, parent, & teacher permission, IEP determined

This course aims to support students with study and organizational skill while helping student practice and achieve self-advocacy.

World Language

In the World Language program, students demonstrate essential language skills needed to meet their basic needs and to communicate in real life situations through listening, speaking, reading, and writing. Additionally, students develop an understanding of the various cultures of the target language. Students learn through a variety of instructional strategies such as listening input, modeling, group work, working with technology, games, and simulations.

In the Spanish program, students who speak Spanish at home or have any degree of fluency and who are interested in improving their language skills should speak with a Spanish teacher or counselor for recommendations before enrolling.

Students must pass first semester to continue to the next level at semester or get teacher permission to continue.

American Sign Language 1&2

Full Year, Grades 9, 10, 11, 12

Course Number: WRL111/112

Dual Credit: Yes – CTE Dual Credit (FPHS only)

Graduation Requirement: World Language, CTE

Prerequisites: None

CTE Program Area: Family and Consumer Sciences

American Sign Language 1&2 course offers specialized and technical training in the field of Deaf Studies and allows students to explore how to facilitate communication between Deaf and hearing people using American Sign Language (ASL). Students learn basic communication components and grammar of ASL, as well as becoming familiar with Deaf culture. Students who earn a grade of 'B' (3.0) or better in this course can earn 5 college credits through Seattle Central College.

American Sign Language 3&4

Full Year, Grades 10, 11, 12

Course Number: WRL113/114

Dual Credit: No

Graduation Requirement: World Language, CTE

Prerequisites: Successful completion of American Sign Language 1&2

CTE Program Area: Family and Consumer Science

American Sign Language 3&4 offers in depth, highly specialized and technical training in the field of linguistics and, Deaf Studies and prepares students for facilitating communication between Deaf and hearing people using American Sign Language (ASL) in a variety of settings. Students learn professional communication components of ASL as well as content specific vocabulary in a variety of areas such as: medicine, law, and finance. ASL students also have opportunities to become participants in the Deaf community.

American Sign Language 5&6 (WHS only)

Full Year, Grades 11, 12

Course ID#: WRL115/116

Dual Credit: No

Graduation Requirement: World Language, CTE

Prerequisites: Successful completion of American Sign Language 1&2 and American Sign Language 3&4

CTE Program Area: Family and Consumer Sciences

American Sign Language 5&6 provides hands-on opportunities within the classroom setting for facilitating communication between Deaf and hearing people using American Sign Language (ASL). Students explore and analyze a myriad of careers that utilize ASL and examine services that are available for Deaf/Hard of Hearing individuals in their local community. Students also research levels of professionalism, confidentiality, and the Code of Ethics that ASL Interpreters adhere to while interpreting.

Japanese 1&2

Full year, Grades 9, 10, 11, 12

Course Number: WRL121/122

Dual Credit: No

Graduation Requirement: World Language

Prerequisites: None

Japanese 1&2 introduces students to basic vocabulary and structures allowing for immediate dialogue in real life situations. Students learn to read, speak, and aurally comprehend Japanese. Students also develop writing skills in hiragana, katakana, and basic kanji. Topics include introductions, family descriptions, likes/dislikes, and daily activities. Components of Japanese culture are studied throughout the year. In addition, this course provides students with the communication skills for subsequent language classes as well as the basics needed to communicate with native speakers. This course requires active participation. Homework is given regularly so that students may acquire skills rapidly.

Spanish 1&2

Full year, Grades 9, 10, 11, 12

Course Number: WRL101/102

Dual Credit: No

Graduation Requirement: World Language

Prerequisites: None

The objective in the first two years of Spanish classes is to learn to understand and speak the language. Its outcome is the ability to understand the spoken language, to speak competently, to read without translation and to write adequately. Students will be exposed to the cultures represented by the language. Speaking and participation are emphasized.

Spanish 3&4

Full year, Grades 10, 11, 12

Course Number: WRL103/104

Dual Credit: No

Graduation Requirement: World Language

Prerequisites: Successful completion of Spanish 1&2 or tested out of certain years of Spanish. (i.e. heritage speakers of Spanish).

The objective in the first two years of Spanish classes is to learn to understand and speak the language. Its outcome is the ability to understand the spoken language, to speak competently, to read without translation, and to write adequately. Students will be exposed to the cultures represented by the language. Speaking and participation are emphasized.

Spanish 5&6

Full year, Grades 11, 12

Course Number: WRL105/106

Dual Credit: No

Graduation Requirement: World Language

Prerequisites: Successfully completion of Spanish 3&4 or have tested out of certain years of Spanish. (i.e. heritage speakers of Spanish).

In a third year of study, students continue the development of oral competence and improve skills in vocabulary building, reading, and writing. A variety of literature will be introduced. Native Spanish speakers are encouraged to enroll to develop literacy skills and enhance the immersion experience.

Spanish Native Speaker 1&2 (FPHS only)

Full year, Grades 9, 10, 11, 12

Course Number: WRL201/202

Dual Credit: No

Graduation Requirement: World Language

Prerequisites: None, for heritage speakers

A heritage speaker is someone whose first language is Spanish. This class will help heritage speakers further develop reading and writing skills in Spanish while learning more about the Spanish-speaking culture. One of

the main goals in this class is to improve Spanish writing skills. Students will read and analyze works of Spanish authors.

AP Spanish Language 1&2

Full year, Grades 10, 11, 12

Course Number: WRL231/232

Dual Credit: No

Graduation Requirement: World Language

Prerequisites: Successful completion of a minimum three years of Spanish language study or permission of teacher/counselor. Heritage speakers are encouraged to take Spanish 5&6 before entering into AP.

In AP Spanish, students complete 300-level college coursework as they prepare to take the AP Exam in May. As in such a class, daily notes and homework are included and Spanish is used exclusively in class. Students continue to refine skills and knowledge needed to communicate fluently in reading, writing, speaking, and listening. In addition to taking practice exams, students will build fluency through interacting with numerous authentic sources, including short stories, poetry, history, encyclopedic entries, news articles, and radio broadcasts. Class members produce written or spoken samples representative of their abilities on a regular basis. College credit depends on AP exam score and individual college standards.

Additional Electives

AVID

Full year, Grades 9, 10, 11, 12

Course Number: Grade 9 ELE123/124

Grade 10 ELE223/224

Grade 11 ELE323/324

Grade 12 ELE423/424

Dual Credit: No

Graduation Requirement: Elective

Prerequisites: Teacher permission/program selection

Advancement Via Individual Determination (AVID) is an academic elective course that prepares students for college success. Over the course of the four high school years, AVID students grow their skills and knowledge in preparation for postsecondary study after high school. Students utilize a rigorous college preparatory curriculum provided by AVID Center that includes motivational activities and academic survival skills. The course emphasizes development of writing, inquiry, collaboration, organization, and reading (WICOR) skills, including rhetorical reading, analytical writing, collaborative discussion strategies, and tutorial inquiry study groups. Local college student tutors assist students in developing their study group skills. The course also addressed preparation for college entrance and placement exams, college study skills and test-taking strategies, note-taking, and research. Requirements: Students must be enrolled each year in academically challenging courses, commit to remain in program through graduation, and agree to and meet stipulations of the AVID student contract. Students complete an application and interview process to be accepted into the program.

Leadership 1&2

Full Year, Grades 9, 10, 11, 12

Course Number: ELE231/232

Dual Credit: No

Graduation Requirement: Elective

Prerequisites:

FPHS - ASB executive officers are required to enroll. Class officers are strongly encouraged to enroll. All other students are selected through an application process.

WHS – Grades 11, 12; Subject to Advisor approval

Leadership 1&2 helps students develop a deeper understanding of the characteristics of leadership. The course gives students the opportunity to grow as leaders through the implementation of a variety of student-led activities on campus, developing leadership skills including decision making, goal setting, event management, and process analysis. By teaching various leadership models and the practical skills to apply them, Leadership prepares students to be leaders in any post-secondary setting. Students grow as individuals while increasing student pride and motivation. Students may also be involved with local and state leadership programs including the SPSL Association of Student Councils and the Association of Washington Student Leaders (AWSL) providing students the opportunity to meet and network with other student leaders around the state.

Advanced Leadership 3,4, College in the High School (WHS only)

Full Year, Grade 12

Course Number: ELE435/436

Dual Credit: No

Graduation Requirement: Elective

Prerequisites: Advanced Leadership 1,2; Instructor Approval

Advanced Leadership 3/4 is a continuation of Advanced Leadership 1/2. Second year leadership is primarily responsible for leading core student activities on campus. The class will focus on the practical application of skills and philosophies learned in first year leadership, as well as in-depth exploration of various models of leadership and consideration of leadership beyond high school. Students will create a portfolio reflecting on their growth as a student leader and their application of the six core foundations of learning. This course will allow students to earn three college credits in CSBS 200 from Eastern Washington University.

Leadership Theory, College in the High School (FPHS Only)

Semester, Grades 11, 12

Course Number: ELE437

Dual Credit: No

Graduation Requirement: Elective

Prerequisites: None

This course addresses communication, decision making, problem solving, time management, and conflict resolution. This class focuses on motivating students to tackle problems in their community at both micro (individual) and macro (school/community/state/national) levels. Ultimately, the class empowers students for authentic and lasting change while at the same time providing highly sought-after leadership skills useful in school, the home, and workplace. This course will allow students to earn three college credits in CSBS 200 from Eastern Washington University.

Intro to Restorative Practices and Student Advocacy (WHS only)

Semester, Grades 10, 11, 12

Course Number: ELE130

Dual Credit: No

Graduation Requirement: Elective

Prerequisites: None

Restorative Practices is a social science that studies how to strengthen relationships between individuals as well as social connections within communities. Rooted in practices from Indigenous Communities across the world, Restorative Practices recognize that strong relationships are a key ingredient in creating safe communities. The course explores frameworks, theory, and practices that intentionally create space for empowerment, relationship, and problem-solving. Students focus on social-emotional skills, conflict resolution and reconciliation, and advocacy skills that translate into community spaces and a variety of human service-related careers.

Restorative Center (WHS only)

Semester or Full Year, Grades 10, 11, 12

Course Number: ELE233/ELE234

Dual Credit: No

Graduation Requirement: Elective

Prerequisites: None

In this course, students staff the Restorative Justice Center. In addition to deepening their learning of Restorative Practices, students serve in campus leadership roles proactively facilitating community building activities, peer mentoring and coaching, and responsive restorative circles and conferences with their peers and staff on campus. Students integrate elements of social justice and transformation to support our campus and community.

Office Assistants

Student office assistants work as an integral part of the daily operations of the high school Main Office, Counseling and Career Center, and Library under the supervision of office staff. Duties may include greeting and providing information to students, staff, and parents, answering phones, filing, delivering messages and passes, and other general office procedures pertinent to the office in which a student is working. Assistants are expected to demonstrate a friendly, professional attitude, respect for others, attention to detail, confidentiality, and excellent attendance. This is an excellent opportunity to learn work-related skills, especially for those interest in pursuing a career in an office profession.

A student may earn .5 elective credit for a maximum of two semesters in their high school career as an office assistant. (Total of one credit) Office assistants will receive pass/fail grades.

Counseling and Career Center Assistant

Semester, Grades 11, 12

Course Number: CIE103 (Sem1), 104 (Sem2)

Dual Credit: No

Graduation Requirement: Elective

Prerequisites: Counselor permission.

Library Office Assistant

Semester, Grades 11, 12

Course Number: CIE105 (Sem1), 106 (Sem2)

Dual Credit: No

Graduation Requirement: Elective

Prerequisites: Library/Media Tech permission.

Main Office Assistant

Semester, Grades 11, 12

Course Number: CIE101 (Sem1), 102 (Sem2)

Dual Credit: No

Graduation Requirement: Elective

Prerequisites: Administrator/Office Manager permission.

Teacher Assistant

Semester, Grades 11, 12

Course Number: CIE107 (Sem1), CIE108 (Sem2)

Dual Credit: No

Graduation Requirement: Elective

Prerequisites: Teacher permission

This class provides students with experience working with administrators, teachers, and office personnel. Students assist teachers with classroom tasks or projects. Assistants are expected to demonstrate good citizenship, respect for others, and maintain confidentiality. Regular attendance is required. TAs must be a role model for other students and work in the classroom/designated workspace unless given a specific task otherwise. A student may earn .5 elective credit for a maximum of two semesters in their high school career as a TA. (Total of one credit) Teacher assistants will receive pass/fail grades.

Pierce County Skills Center

The Pierce County Skills Center offers year-long Career and Technical Education programs designed to give students an in-depth look into specific career fields. PCSC courses are taught by industry professionals in state-of-the-art facilities. PCSC programs earn high school and college credit and prepare students to successfully transition to post-secondary education and the workforce.



- Students attend their home high school for ½ day and PCSC for the other ½ day
- PCSC serves high school juniors and seniors
- Programs are tuition free, but may have program/testing fees
- Transportation is provided to and from each high school
- Students may earn up to 1.5 high school credits per trimester (total of 4.5 credits per year)
- Session Times: AM Session – 7:55am-10:25am, PM Session – 11:15am-1:45pm

Students interested in attending PCSC should meet with their counselor to review credit status. **Online applications for the 2022-2023 school year will be accepted beginning March 1, 2022, at 5pm.**

To access the PCSC online application, visit our website at www.pcskillscenter.org.

Aerospace Composites

The Aerospace Composites program is designed to prepare students to fabricate, assemble and repair composite materials. Students design, build and repair composite parts and assemblies using the same techniques as our industry partners. Year 2 option available with instructor permission.

Dual Credit: Up to 14 credits

Certifications: First Aid/CPR, Locally-Developed Manufacturing Certificate

Credit Equivalency: Technical/3rd Year Math - 1.5, Occupational Ed - 3.0 (Per Year)

Aerospace Machining/Fabrication

The Aerospace Machining/Fabrication program is designed to teach hands-on skills, processes, and technologies used in the aerospace and manufacturing industry. Students will learn technical sketching, precision measurement, computer-aided design/programming, fabrication/assembly, welding, and computer-aided manufacturing. Year 2 option available with instructor permission.

Dual Credit: Up to 23 credits

Certifications: First Aid/CPR, Locally-Developed Manufacturing Certificate

Credit Equivalency: Technical/3rd Year Math - 1.5, Occupational Ed - 3.0 (Per Year)

Automotive Technology

The Automotive Technology program is designed to train students for a variety of jobs within the automotive industry. Students will focus on maintenance and light repair in an environment set up just like an automotive service department. Students will service and diagnose vehicles, complete tune-ups, conduct brake and suspension repairs, and perform wheel alignments. Year 2 option available with instructor permission.

Dual Credit: Up to 13 credits

Certifications: First Aid/CPR, ASE (varies - up to 10 certifications available), Valvoline, SP2

Credit Equivalency: Occupational Ed - 4.5 (Per Year)

Construction Trades

The Construction Trades program is a State of Washington approved pre-apprenticeship program designed to prepare students for direct entry into an apprenticeship by meeting rigorous academic and industry standards. This course covers both residential and commercial construction with an emphasis on job site safety through hands-on projects, guest speakers and field trips. Students will learn framing, roofing, blueprint reading, estimating costs, and site preparation. Students who meet ALL course competencies with a

B or better will be granted preferred enrollment and advanced placement in the Carpenters-Employers Apprenticeship & Training Trust Fund. Year 2 option available with instructor permission.

Dual Credit: Up to 25 credits

Certifications: First Aid/CPR, Carpenters 1, 2 & 3, Forklift, OSHA 10, Pre-Apprenticeship Certificate

Credit Equivalency: Technical/3rd Year Math - 1.5, Occupational Ed - 3.0 (Per Year)

Cosmetology

The Cosmetology program is designed to train students in haircutting, current styling trends, hair coloring, and safety and sanitation in a hair salon setting. Students will begin the program in July before their senior year through the next August after graduation and will earn the 1,400 hours (5 quarters) of instruction required to take the state licensing examination. Students are encouraged to attend Clover Park Technical College for two additional quarters to earn an Associate's Degree. Students must be prepared to attend classes in the evenings and must provide their own transportation.

Program Requirement: Students must be a senior.

Off Site: Clover Park Technical College

Dual Credit: Up to 93 credits

Certifications: Washington State Cosmetology License

Credit Equivalency: Chemistry-Other - 1.5, Occupational Ed - 3.0 (Per Year)

Criminal Justice

The Criminal Justice program is designed to prepare students with preliminary training for careers in law enforcement. Upon completion of this program, students will have a working knowledge of criminal law, policing procedures, forensics, and their application to the various divisions of the criminal justice system.

Dual Credit: Up to 17 credits

Certifications: FEMA Incident Command Systems 100, 200 & 700; First Aid/CPR

Credit Equivalency: Fitness & Conditioning Activities - 1.5, CWI or Civics - 1.5, Occupational Ed - 1.5 (Per Year)

Culinary Arts

The Culinary Arts program is designed to prepare students for a promising career in the food service or hospitality industry. Students will learn kitchen procedures, sanitation and safety, menu planning and costing, dining room service, baking/food preparation, and banquet and catering service taught by industry professionals in a state-of-the-art facility. Students will also assist in the operation of our on-site café, *The Glacier Grill*. Year 2 option available with instructor permission.

Dual Credit: Up to 15 credits

Certifications: WA State Food Handler's Permit, National ServeSafe Certification, First Aid/CPR

Credit Equivalency: Creative Arts-Sculpture - 1.0, Occupational Ed - 3.5 (Per Year)

Fire Science & Emergency Services

The Fire Science & Emergency Services program is designed to prepare students for a career as a firefighter and other emergency services careers such as, EMT, fire investigator, and building investigator. Students will learn the academic requirements associated with being a firefighter including wildland firefighting. Students will use industry firefighting equipment such as hoses, turnout gear, SCBAs, and a working fire engine. Year 2 option available with instructor permission.

Dual Credit: Up to 15 credits

Certifications: First Aid/CPR, FEMA Incident Command Systems 100, 200 & 700, Wildland Firefighting

Credit Equivalency: Fitness & Conditioning Activities - 1.5, Occupational Ed - 3.0 (Per Year)

Information Technology Services (ITS) & Cybersecurity

The ITS & Cybersecurity program is designed to provide students with a broad understanding of the installation, troubleshooting, and management of computers, hardware, and computer networks in alignment to industry standards. Students will also learn cybersecurity fundamentals and automation for factories using Programmable Logic Controllers (PLCs). Year 2 option available with instructor permission.

Dual Credit: Up to 17 credits

Certifications: A+, Network+, Security+, PC Pro, Ethical Hacker Pro, MCSE (Testing Fees May Apply)

Credit Equivalency: Technical/3rd Year Math - 1.5, Occupational Ed - 3.0 (Per Year)

Medical Careers (NA-C)

The Medical Careers program is designed to prepare students for initial certification as a Nursing Assistant (NA-C) as well as continued training in nursing. Students spend time in the classroom and in an assisted living facility learning many procedures for patient care including: taking blood pressure, temperature, pulse and respirations, as well as learning how to bathe, groom, feed, lift, exercise, and position patients. Transportation is required for clinicals. **Program Requirements:** Students must be a senior and pass a criminal background check.

Prerequisite: Successful completion of Biology or other related science class.

Dual Credit: Up to 22 credits

Certifications: First Aid/CPR, Nursing Assistant Certification, WA State HIV/AIDS Training

Credit Equivalency: Health - 1.5, Biology-Other - 1.5, Occupational Ed - 1.5(Per Year)

Pre-Pharmacy Technology

The Pre-Pharmacy Technology program introduces students to the skills needed for entry-level positions in retail, hospital or mail-order pharmacies. Students will learn how to process prescriptions, prepare IV medications, order and stock medications, as well as operate and troubleshoot automated drug dispensing systems. Students will also learn about disease, medication therapy, anatomy & physiology and medical terminology. This program will provide a foundation for students who want to pursue a career as a pharmacy technician or pharmacist.

Prerequisite: Biology or other related science class.

Dual Credit: Up to 7.5 credits

Certifications: First Aid/CPR, Pharmacy Assistant, HIPAA, WA State HIV/AIDS

Credit Equivalency: Anatomy & Physiology - 1.0, Health - 1.0, Life Science - 1.0, Occupational Ed - 1.5 (Per Year)

Pre-Physical Therapy & Sports Medicine

The Pre-Physical Therapy & Sports Medicine program is designed to provide students with hands-on experience in evaluation, acute care and rehabilitation skills. This program will also teach students about Kinesiology (the study of human movement), human anatomy and physiology, ethics, and taping procedures. This course is a first stop for students interested in becoming a certified athletic trainer, strength and conditioning coach, physical therapy assistant or physical therapist. Year 2 option available with instructor permission.

Prerequisite: Biology or other related science class.

Dual Credit: Up to 15 Credits

Certifications: First Aid/CPR

Credit Equivalency: Anatomy & Physiology - 1.5, Fitness & Conditioning Activities - 1.5, Occupational Ed - 1.5 (Per Year)

Pre-Veterinary Technology

The Pre-Veterinary Technology program is designed to prepare students for a career in animal healthcare and provides a foundation for employment in fields such as veterinary medicine, agriculture, research, and fish and wildlife, as well as training in grooming services. Students will gain experience through classroom activities and daily handling of resident animals in a realistic setting that models worksites in the industry. Year 2 option available with instructor permission.

Prerequisite: *Successful completion of high school Biology or equivalent class.*

Dual Credit: Up to 2 credits

Certification: First Aid/CPR

Credit Equivalency: Zoology - 1.5, Occupational Ed - 3.0 (Per Year)

Video Game Development/AP Computer Science Principles

The Video Game Development program is designed to teach students to create video games using trigonometry and higher math, computer programming in C#, as well as 2D and 3D animation. This course will prepare students with the skills necessary for the video game industry's need for qualified video game programmers and artists. Year 2 option available with instructor permission.

Prerequisite: *Successful completion of Algebra I*

Dual/College Credit: Up to 5 credits. Students will also take the Advanced Placement Computer Science Principles exam

Certifications: Unity, First Aid/CPR

Credit Equivalency: Technical/3rd Year Math - 1.5, Occupational Ed - 3.0 (Per Year)

COUNSELING AND CAREER SERVICES

Franklin Pierce Schools Counseling Programs provide guidance and support to enable all students, regardless of individual differences, to acquire the self-knowledge, academic, post-secondary planning competencies necessary to succeed and contribute in a changing society.

Franklin Pierce High School

Counselors are assigned to specific sections of the alphabet. Therefore, they work with students in all grades. For more information please contact:

Jaime Fineman	Counselor A-E	253-298-3902	jfineman@fpschools.org
Letysha Plaskett-Rosario	Counselor F-L	253-298-3953	lplaskett@fpschools.org
Breanne Chapman	Counselor M-R	253-298-3820	bchapman@fpschools.org
JulieAnn Detweiler	Counselor S-Z	253-298-3901	jdetweiler@fpschools.org
Ashley Rosier	Grad/Transition Specialist	253-298-3835	arosier@fpschools.org
La'Keeshia Thomas	Data Manager/Registrar	253-298-3977	lthomas@fpschools.org
Elisa Price	College & Career Specialist	253-298-3934	eprice@fpschools.org
Lori Brist	Registration Coordinator	253-298-3834	lbrist@fpschools.org

The FPHS Guidance, Counseling and Career Department hours are 7:00am – 3:15pm

Parents are encouraged to contact their child's counselor to schedule an appointment with the counselor and/or to arrange parent teacher conferences. Counseling Office: 253-298-3834

Washington High School

Counselors are assigned to specific sections of the alphabet. Therefore, they work with students in all grades. For more information please contact:

Jamie Zapanta	Counselor A-G	253-298-4861	jzapanta@fpschools.org
Eduardo Ortiz	Counselor H-O/Dept. Head	253-298-4736	eortiz@fpschools.org
Matthew Summers-Smith	Counselor P-Z	253-298-4735	msummerssmith@fpschools.org
Annie Plutko	Grad/Running Start Coach	253-298-4718	aplutko@fpschools.org
Bonnie Wiklund	Student Data Manager	253-298-4713	bwiklund@fpschools.org
Sheryl Moore	College & Career Specialist	253-298-4871	smoore@fpschools.org
Eileen Gatlin	Registration Coordinator	253-298-4734	egatlin@fpschools.org

The WHS Guidance, Counseling and Career Department hours are 7:00am – 2:30pm

Parents are encouraged to contact their child's counselor to schedule an appointment with the counselor and/or to arrange parent teacher conferences. Counseling Office: 253-298-4734

GATES HIGH SCHOOL

GATES High School is a school of choice in Franklin Pierce Schools for high school students. GATES provides a small learning environment with a focus on meeting individual student needs. Staff prioritize positive relationships with students. Coursework focuses on meaningful and engaging work. In a positive, safe environment, students feel secure to be who they are while respecting the individuality of others. Students are encouraged to and supported in taking responsibility for their lives and to formulate educational plans that direct them toward success during and after high school.



GATES HS provides competency-based learning opportunities for students to meet standards in high school courses. GATES' classes are of a traditional nature within a smaller environment - there are typically less than 15 students to a class. All work at GATES High School must be completed at a mastery level of at least 70% to receive credit at the end of a class. Currently, graduation requirements are the same and students earn the same diploma that they would at an FPS comprehensive high school. GATES runs on an eight-term system, with students focusing on five courses each term, earning up to ten academic credits a year. GATES is studying mastery-based learning options for the future as part of a Washington State Board of Education grant program.

All students at GATES High School take a Check and Connect class for the entire time they are enrolled at GATES High School. The Check and Connect class meets daily and is taught by the student's academic advisor. The Check and Connect advisor also acts as a case-manager/advocate to support the success of their students. The Check and Connect class emphasizes goal setting, study skills and academic progress. Attendance is required for all students.

Any student between the ages of 15–21, who is a high school student (grades 10–12) and will be able to complete all high school credits and requirements by the time they turn 21 is welcome to apply to GATES High School. Students who are currently under suspension or expulsion from another school are welcome to apply to GATES *when the conditions to re-enter her/his home school have been met.*

Every student entering GATES High School is required to complete a three-day GATES Success Orientation prior to the term they enter school. The purpose of GATES Success Orientation is to support a successful transition into GATES. GATES Success Orientation activities are designed to help students get to know the school, the staff, each other, and themselves as learners to reflect on their academic history and to set goals that will support them in graduation and beyond. Students earn .25 elective credits by successfully completing GATES Success Orientation.

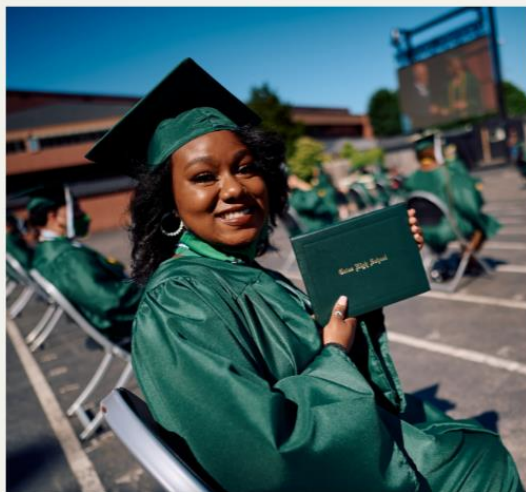
Interested students at Franklin Pierce high schools should confer with their counselor to determine if GATES might be a fit. A referral form will be completed as a first step in potential enrollment at GATES.

Counselor:

Crissy Kirklin

253-298-4000

ckirklin@fpschools.org



Franklin Pierce High School

Principal Ron Hartley

11002 18th Ave E, Tacoma, WA

253-298-3800

franklinpierce@fpschools.org



@FPHSCARDS



@FPHSCARDS



@FPHSSPIRIT

GATES High School

Principal Val Jones

813 132nd St. S, Tacoma, WA

253-298-4000

gates@fpschools.org



@GATESHSGATORS



@GATESHIGHSCHOOL

Washington High School

Principal Brent Whitmarsh

12420 Ainsworth Ave S, Tacoma, WA

253-298-4700

washington@fpschools.org



@WHSPATRIOTPRIDE



@WHS_PATRIOTS_



@WHSPATRIOTPRIDE



www.fpschools.org



(253) 298-3000



info@fpschools.org

Franklin Pierce Schools

315 129th St. South

Tacoma, WA 98444

**FRANKLIN
PIERCE
SCHOOLS**