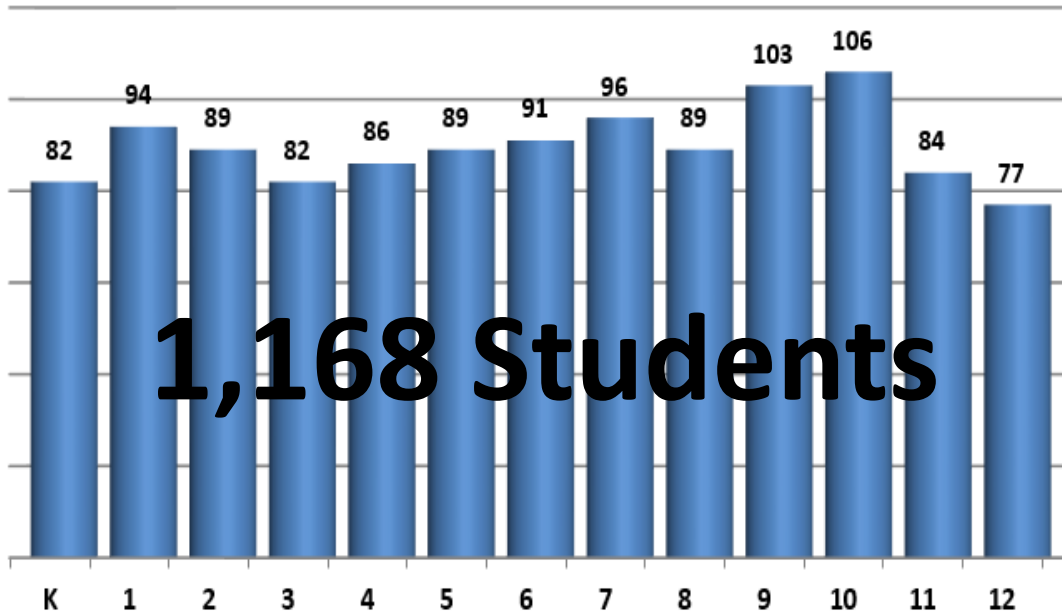
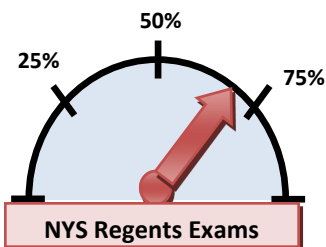




Class Enrollment

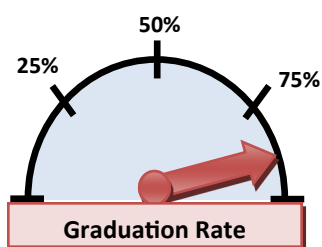


The following Data and Assessment Newsletter is a compilation of district-wide data from the 2021-2022 school year. The data shared in this newsletter is for the educators of the SFCSD and hopefully will provide informative data on the students in our district.



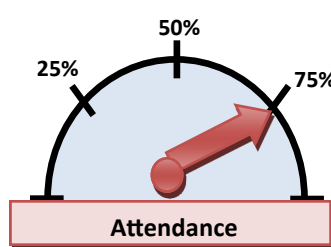
Average % Passing Algebra I, Biology, English, Earth Science

68%



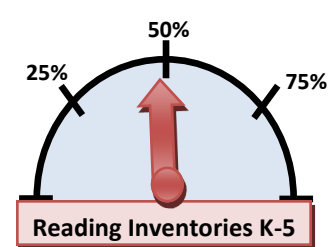
% of Graduates from Mynderse Academy
Class of 2021
(Total Completers)

92%



Student Attendance at 90% or Greater
FK (76%) CS (78%)
MS (76%) MA (69%)

75%



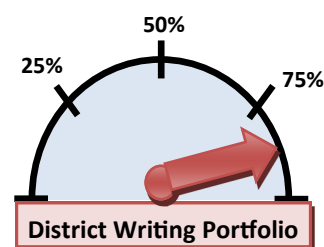
Average % At/Above GL
DRA (Grades K-2),
QRI (Grades 3-5)

50%



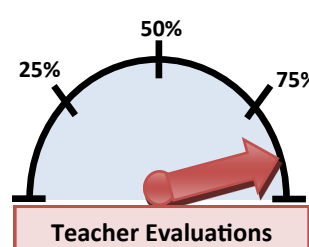
% Free & Reduced Lunch
Free Lunch &
Reduced Lunch

43%



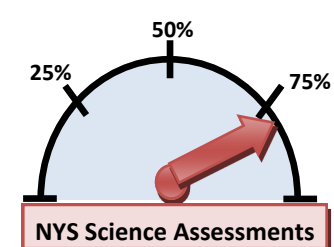
% Meeting GL Competency
Grade 8=79%,
Grade 11=94%

87%



% Meeting Proficiency
In Domain II & III
Class Environment
Instruction

93%



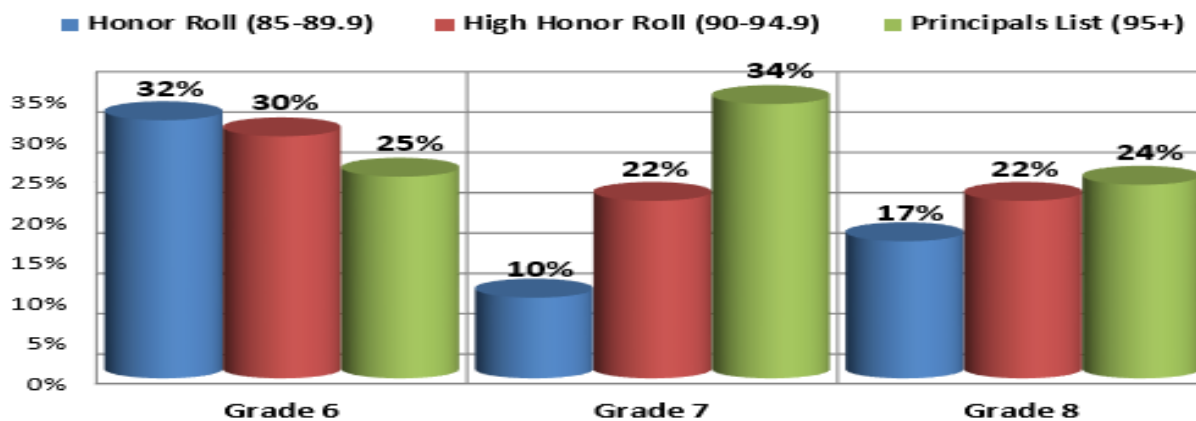
Grade 4 = 82%
Grade 8 = 80%

81%

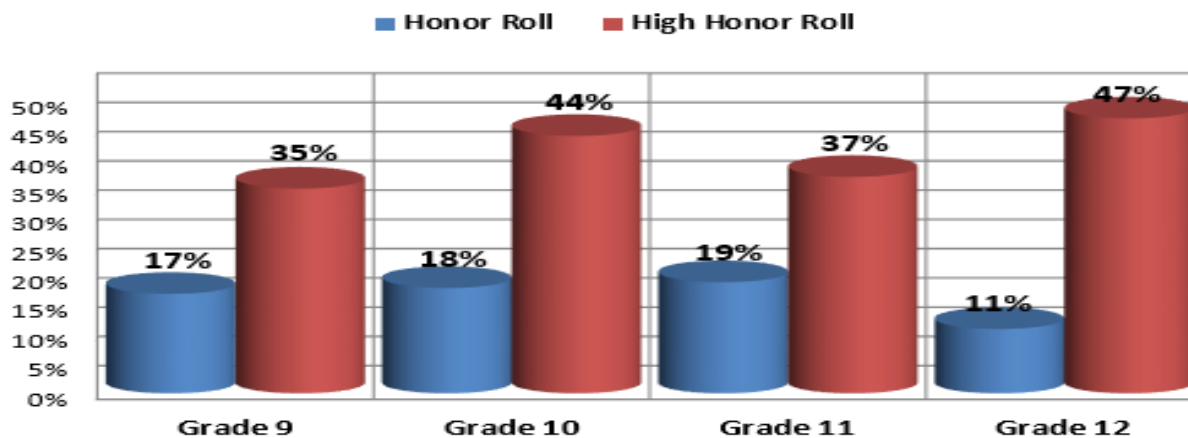


HS/MS QUARTER 2 ACHIEVEMENT DATA (6-12)

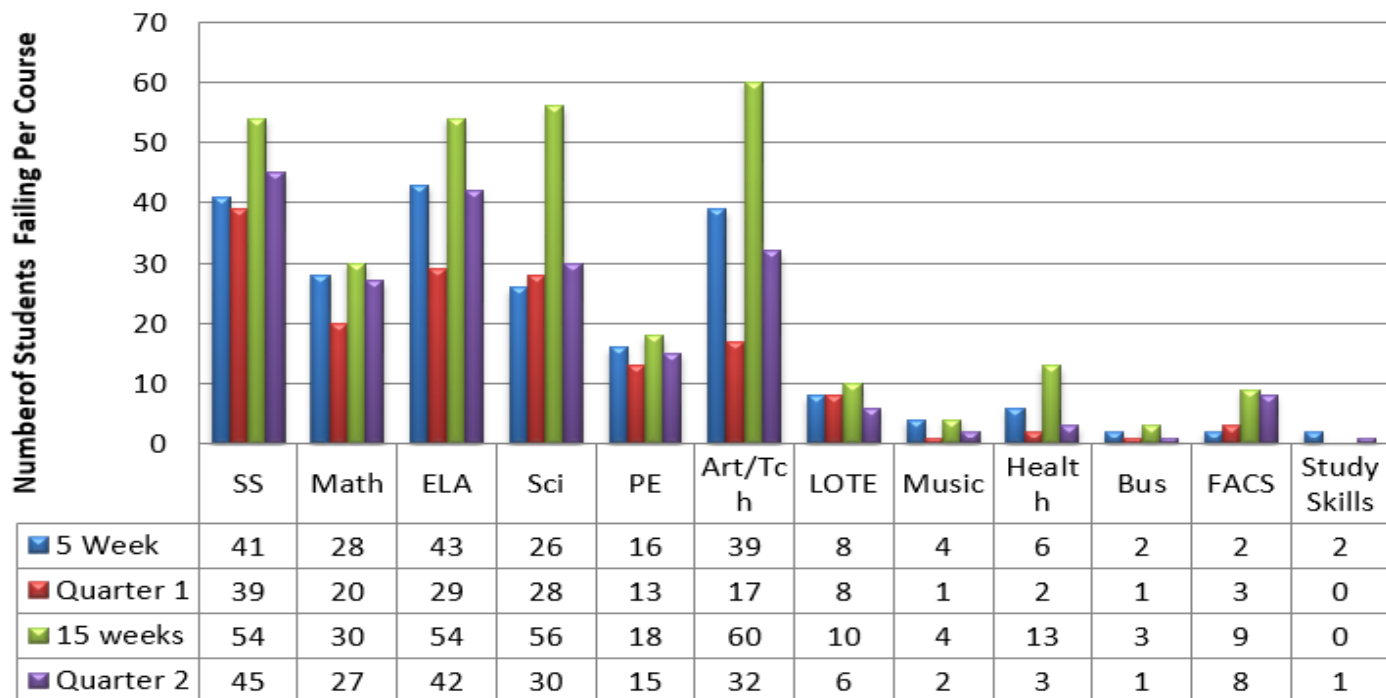
Middle School Honor Roll Data



Mynderse Academy Honor Roll Data



STUDENT FAILURE BY COURSE GRADES 9-12





SENECA FALLS CSD ABSENTEEISM (K-12) & ACHIEVEMENT DATA (9-12)

Percentage of Students Who Were Absent as of 3/1/22

*Numbers may change as quarantined students complete work.

Grade	0-4%	5-9%	10% or more	10% or more AND Economically Disadvantaged Per Building	10% or more AND Not Economically Disadvantaged Per Building	All Students 10% or More Per Building
K	63.5%	18.8%	17.6%	33.8%	12.4%	24.4%
Grade 1	51.5%	20.6%	27.8%			
Grade 2	47.3%	25.8%	26.9%			
Grade 3	45.9%	28.2%	25.9%	36.4%	5.8%	22.3%
Grade 4	51.1%	27.3%	21.6%			
Grade 5	53.8%	26.4%	19.8%			
Grade 6	52.1%	24.5%	23.4%	31.4%	11.6%	22.6%
Grade 7	62%	15%	23%			
Grade 8	56.4%	22.3%	21.3%			
Grade 9	56.4%	15.5%	28.2%	44.4%	19.9%	31.2%
Grade 10	46.8%	18.9%	34.2%			
Grade 11	51.6%	22%	26.4%			
Grade 12	48.1%	15.2%	36.7%			

Quarter 2 Grades 9-12 Data

Grade	High Honor Roll	Honor Roll	Total	% students on honor and high honor roll
9	36	18	54/103	52%
10	46	19	65/106	61%
11	31	16	47/84	56%
12	36	9	45/77	58%
Total	149	62	211/370	57%

Grade	Failing 1 class	Failing more than 1 class	# of students failing at least 1 class	% of students failing 1 or more classes	# of Courses being failed
9	13	18	31/103	30%	85
10	10	13	23/106	22%	58
11	10	10	20/84	24%	37
12	9	8	17/77	22%	32
Totals	42	49	91/370	25%	212



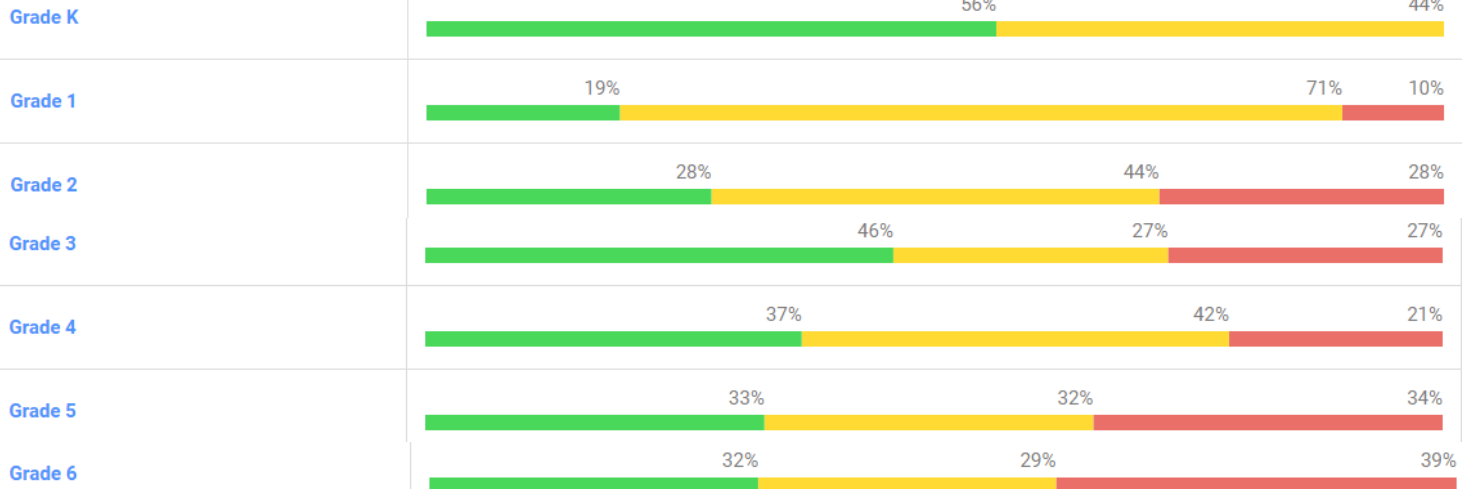
K-6 IREADY DIAGNOSTIC ASSESSMENT

● On or Above Grade Level

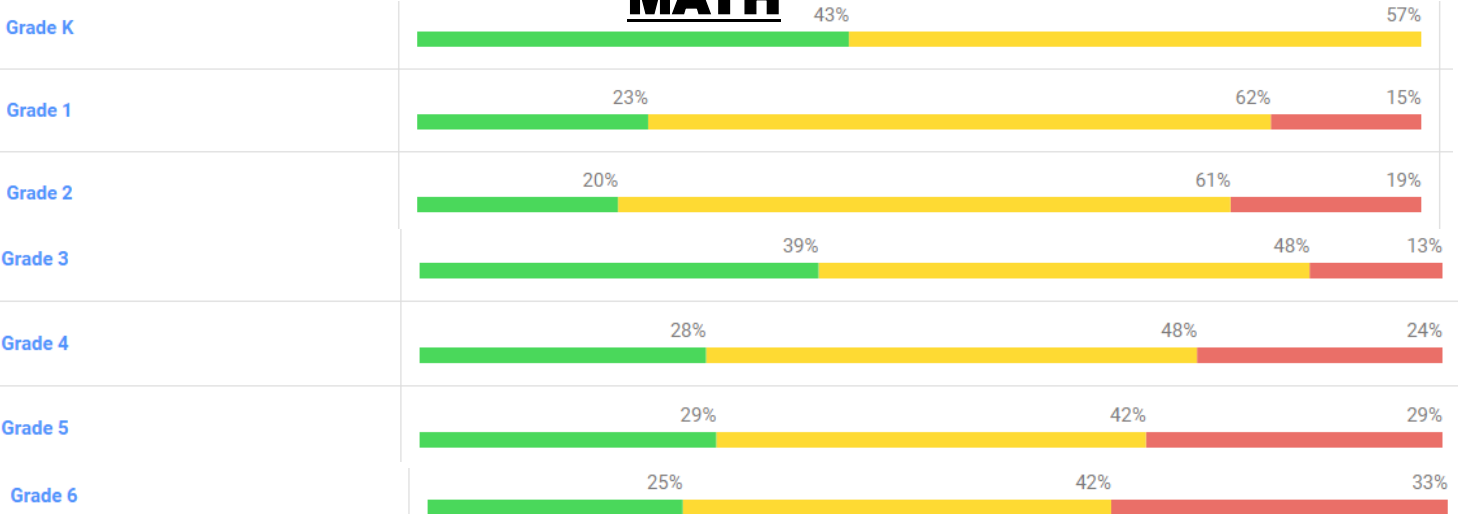
● One Grade Level Below

● Two or More Grade Levels Below

READING



MATH



● Mid or Above Grade Level ● Early On Grade Level ● One Grade Level Below ● Two Grade Levels Below ● Three or More Grade Levels Below

R
E
A
D
I
N
G

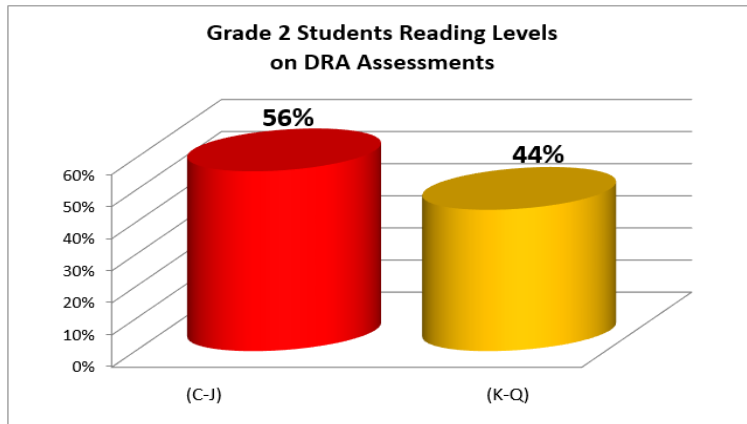
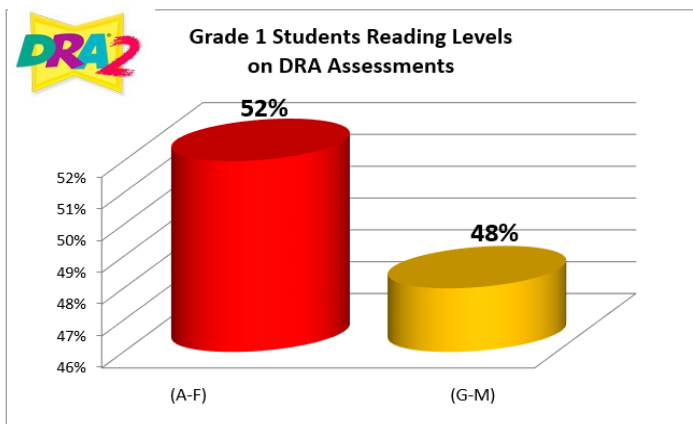
	Mid or Above Grade Level	Early On Grade Level	One Grade Level Below	Two Grade Levels Below	Three or More Grade Levels Below
K	23%	33%	44%	0%	0%
1	13%	6%	71%	10%	0%
2	11%	17%	44%	28%	0%
3	23%	23%	27%	23%	4%
4	19%	19%	42%	8%	13%
5	12%	20%	33%	19%	16%
6	17%	13%	31%	13%	26%

M
A
T
H

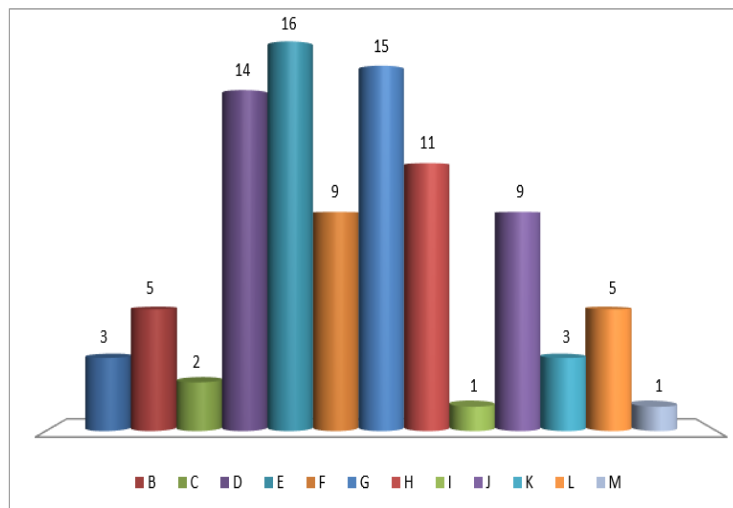
	Mid or Above Grade Level	Early On Grade Level	One Grade Level Below	Two Grade Levels Below	Three or More Grade Levels Below
K	24%	18%	57%	0%	0%
1	18%	5%	62%	15%	0%
2	9%	11%	61%	19%	0%
3	11%	27%	48%	9%	5%
4	8%	20%	48%	19%	6%
5	9%	19%	43%	12%	17%
6	2%	23%	42%	21%	12%



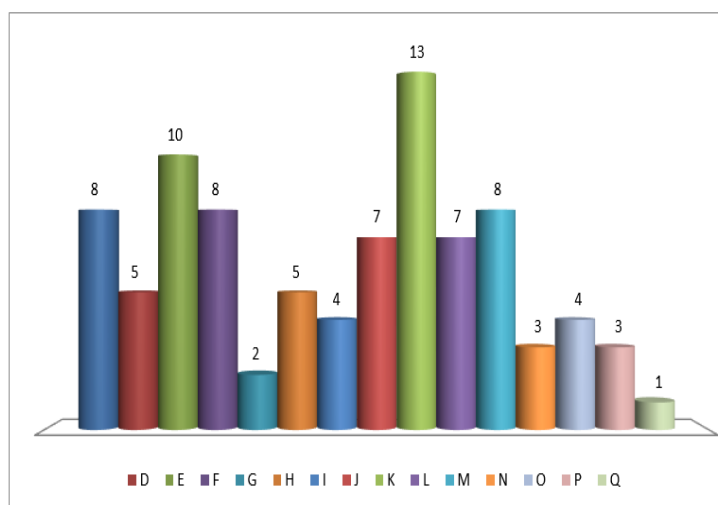
Students at the primary & elementary grade levels are tested to determine reading levels. Frank Knight uses the Developmental Reading Assessment (DRA) and Cady Stanton uses the Qualitative Reading Inventory (QRI). Both programs are used to determine instructional reading levels (accuracy and comprehension)



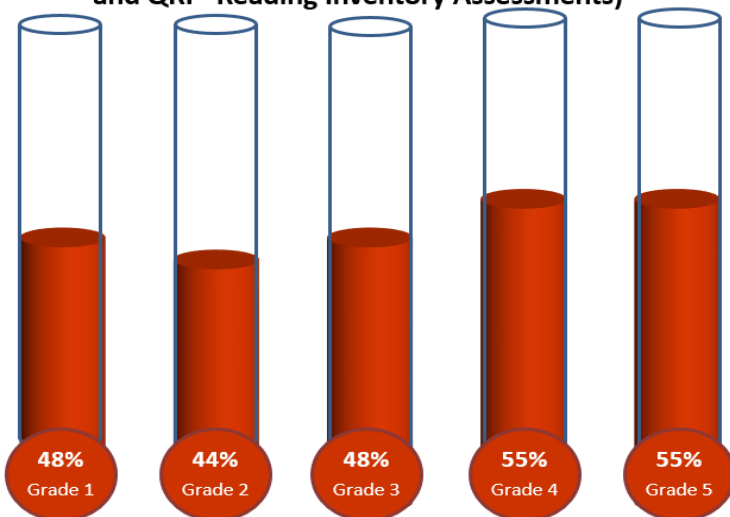
Grade 1 Instructional Reading Levels (DRA)



Grade 2 Instructional Reading Levels (DRA)



Grades 1-5 - % Reading At or Above Grade Level (DRA and QRI - Reading Inventory Assessments)



QRI Goal: All students (Gr. 3-5) will meet their reading target as measured by the QRI (Qualitative Reading Inventory)

Grade 3	Grade 4	Grade 5
48%	55%	55%
At or above Grade Level	At or above Grade Level	At or above Grade Level
30%	30%	20%
Less than a year below Grade Level	Less than a year below Grade Level	Less than a year below Grade Level
22%	15%	25%
A year or more below Grade Level	A year or more below Grade Level	A year or more below Grade Level

"Gauging" Our Reading