

## OUR MISSION

Metro Technology Centers prepares people for successful employment and life in a global society.

## OUR VISION

Metro Technology Centers will be recognized as a strategic partner in economic development by preparing a high-quality workforce.

## OUR COMMITMENT

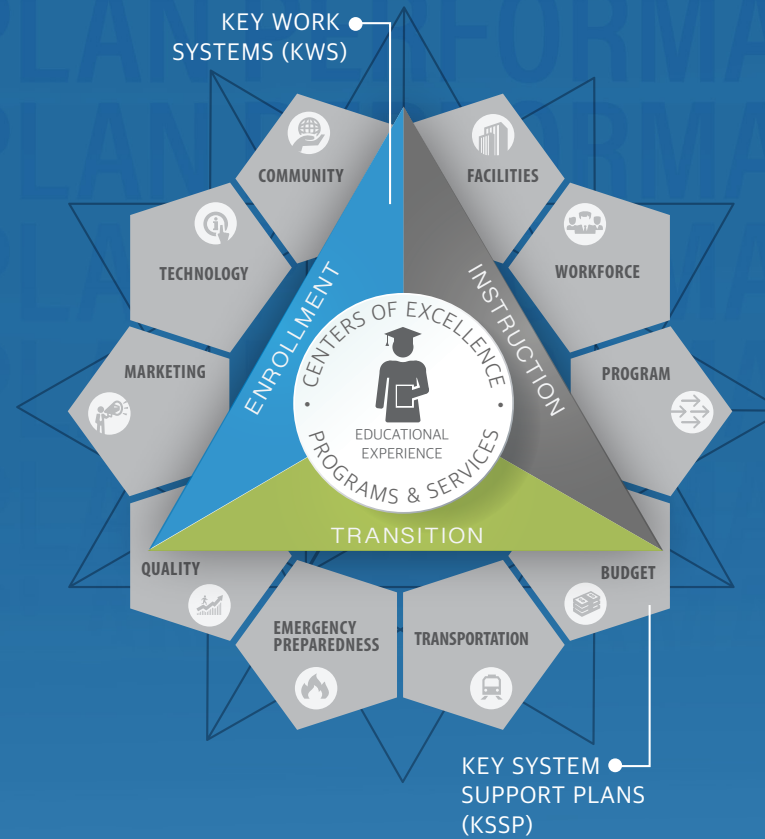
Metro Technology Centers provides the highest quality programs and services enabling students to succeed in their chosen career field.(Board Policy BP-1007)

## OUR CORE VALUES

- Customer-focused
- Learning-centered
- Accountable and ethical
- Innovative
- Nurturing, sensitive and supportive
- Dedicated to continuous quality improvement
- Agile and Flexible

## OUR CORE COMPETENCIES

- Holistic approach to education
- Career and technical training
- High skill/high wage placements



# PERFORMANCE EXCELLENCE PLAN



405.424.8324  
[www.metrotech.edu](http://www.metrotech.edu)

Metro Technology Centers does not discriminate on the basis of race, color, national origin, sex, gender, gender expression or identity, sexual orientation, age, veteran status, religion, pregnancy, or genetic information or disability in its programs, services, activities and employment. Metro Technology Centers will provide equal access to the Boy Scouts of America and other designated youth groups.



**Metro Technology Centers**  
Preparing for Life

METRO TECHNOLOGY CENTERS PREPARES PEOPLE FOR WORK AND LIFE IN A GLOBAL SOCIETY.

GOALS



**STRENGTHEN  
MARKET POSITION**



**IMPROVE STUDENT  
PERFORMANCE**



**IMPROVE CAREER  
OUTCOMES**

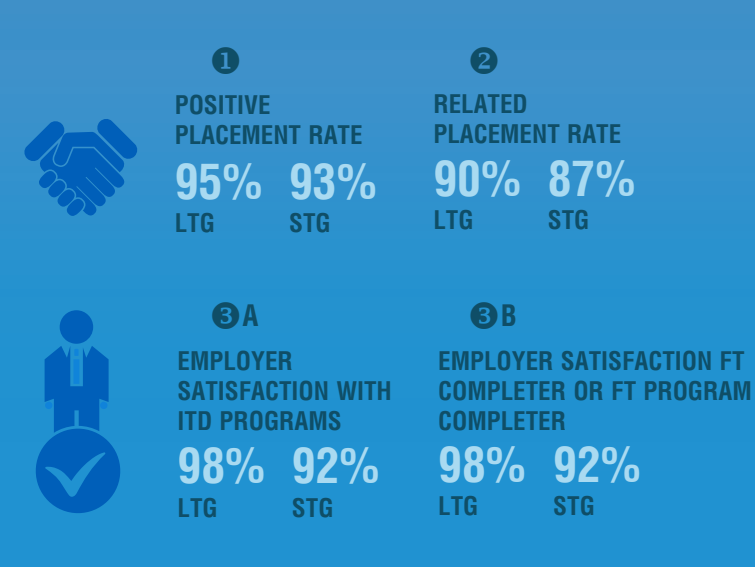
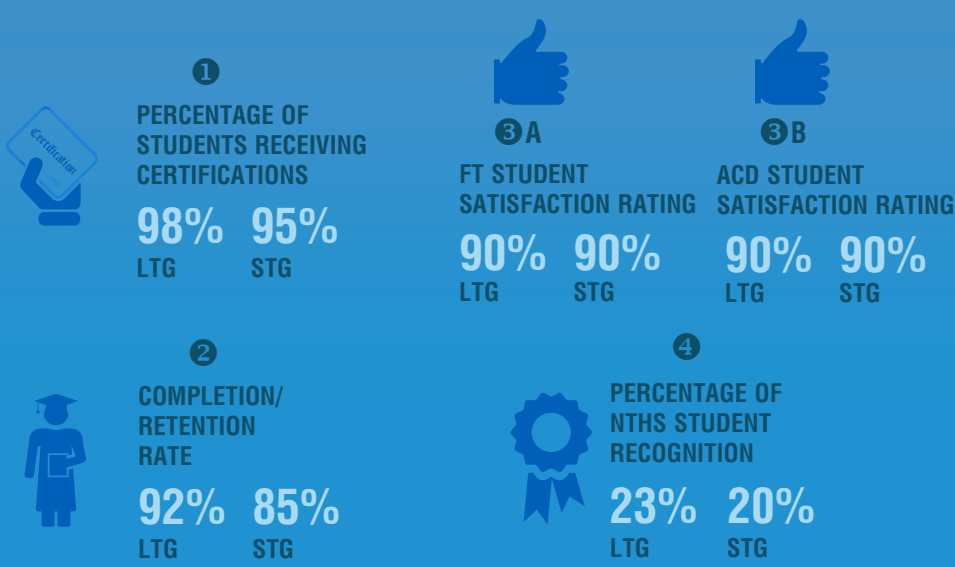
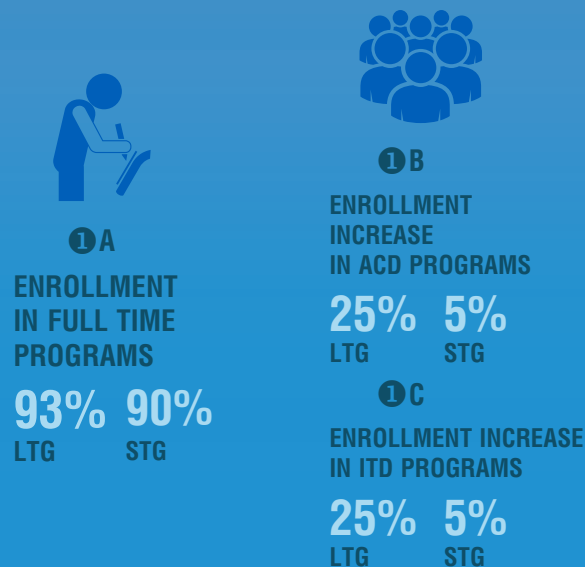
STRATEGIC OBJECTIVES

- 1 Increase Enrollment in Training Programs

- 1 Increase Number of Certifications Received
- 2 Increase Student Completion/Retention
- 3 Increase Student Satisfaction with Educational Experience
- 4 Increase Students Recognized as NTHS Members

- 1 Increase Student Positive Placement Rate
- 2 Increase Student Related Placement Rate
- 3 Increase Industry Engagement

KEY PERFORMANCE MEASURES



STG - SHORT TERM GOAL (WITHIN 1 - 2 YEARS) · LTG - LONG TERM GOAL (WITHIN 3 -5 YEARS)