





August & September

Bournedale Bulletin



Important Dates to Remember



August

Tuesday, 27th

First Day of School (Grades 1 & 2)!!!!

Wednesday, 28th

First Day of Kindergarten

Friday, 30th

No School



September

Monday, 2nd

No School

Tuesday, 3rd

First Day of PreK

Wednesday, 11th

Early Release Day 2:15 Dismissal

Week of 16th

Scholastic Book Fair

September (cont'd)

Wednesday, 18th

Picture Day

Thursday, 19th


Back to School Night 5:30-7:30
Parents only please

Wednesday, 25th

Early Release Day 2:15 Dismissal

Staying Informed

- Like our new Facebook page "Bournedale Elementary"! Please note there are several other pages, but this one will be the official page for our school with information coming directly from the administration and staff.
- Sign up to receive our weekly Enews email. This provides important information and links regarding the happenings at Bournedale. Enews will go out every Thursday.
<https://www.bourneps.org/communication>
- Bournedale has chosen Thursdays as our day to have events and activities. We're hoping by planning things on the same evening that will help families plan so everyone can attend!
- This first newsletter is coming home paper copy, but starting in October they will be sent through Enews and our Facebook page!



Bourne to Be Respectful, Responsible and Safe

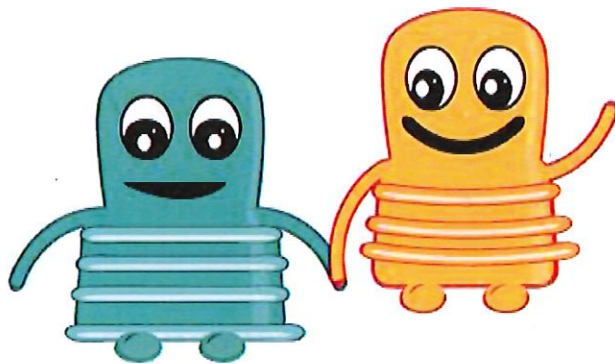
You will hear your student talking about these traits they will learn at school. We will be sharing more information as the school year gets underway!

B2B



To and From School

- The day for students begins at 9:00 AM and ends at 3:15 PM
- Bus and Transportation information is available at the Bourne Public School's website:
<http://www.bourneps.org/administration/22>
- All Bournedale buses will be marked with a **PURPLE** dot
- Extra staff is available the first couple weeks to assist students to their classrooms
- Cars are not allowed past the front loop due to safety while our students are exiting and boarding the buses
- If you are dropping your student off in the morning, please remember they must exit curbside. A staff member is happy to assist if necessary to keep the flow of traffic moving. If you would like to walk your student to the front door, please park in one of the front lots.
- In the afternoon please park in the front lot if you plan to pick your student up. The fire lane needs to stay clear of parked cars. At dismissal students will be called down to the lobby and you will sign them out from there.
- If your child attends Before or Aftercare, you can drop them off or pick them up at the cafeteria entrance.



What is Back to School Night?

The purpose of Back to School Night is for parents to learn more about your student's classroom and teacher. You will hear about what their year will look like, curriculum, and opportunities for families to volunteer. If you would like to volunteer or go on field trips, you will need to have a CORI on file. These forms can be filled out at the main office.

Who's Hungry?

- Bournedale is a Nut Free building. Please be mindful of this while packing snack and lunch for your child
- Please send in items and containers students are comfortable with. Our little ones can get nervous trying out something new in these first couple weeks!
- Lunch menus can be found at <https://bourne.nutrislice.com/menu>
- Free and Reduced Applications can be filled out at <https://www.myschoolapps.com/Home/Contact>
- Add money and monitor your student's lunch account at My School Bucks <https://www.myschoolbucks.com/ver2/login/getmain?requestAction=home>

