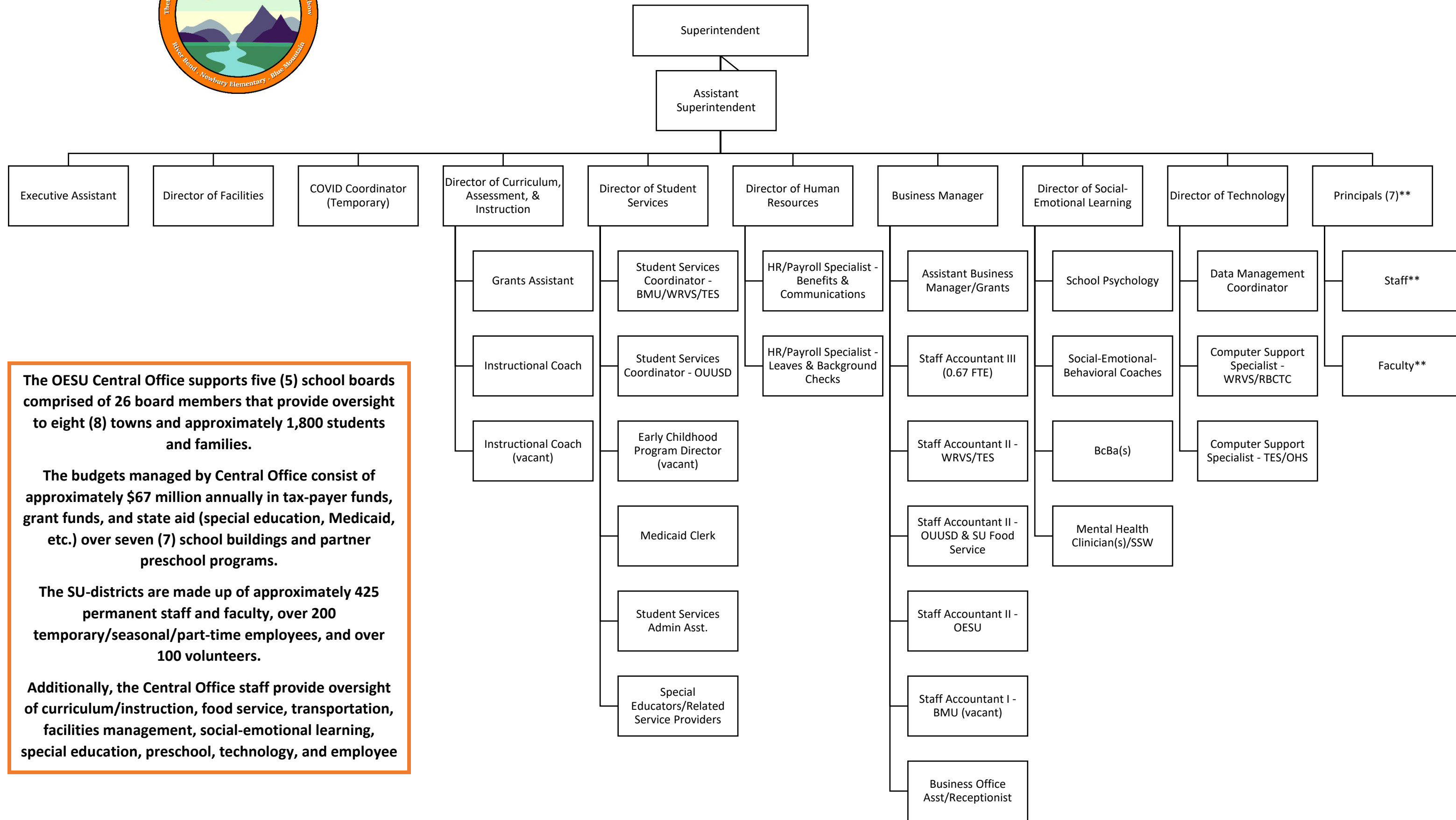


# Orange East Supervisory Union Organizational Chart



**The OESU Central Office supports five (5) school boards comprised of 26 board members that provide oversight to eight (8) towns and approximately 1,800 students and families.**

**The budgets managed by Central Office consist of approximately \$67 million annually in tax-payer funds, grant funds, and state aid (special education, Medicaid, etc.) over seven (7) school buildings and partner preschool programs.**

**The SU-districts are made up of approximately 425 permanent staff and faculty, over 200 temporary/seasonal/part-time employees, and over 100 volunteers.**

**Additionally, the Central Office staff provide oversight of curriculum/instruction, food service, transportation, facilities management, social-emotional learning, special education, preschool, technology, and employee**

*\*\* These positions are not Central Office employees but are supported by the SU-office and overseen by the Superintendent and Assistant*