



Wayne County Parent Advisory Committee

33500 Van Born Road
 Wayne, MI 48184-2497
 (734) 334-1625
 Fax: (734) 334-1494

Kara Clarke, Chairperson **Jennifer Seal**, Vice-Chairperson
Samara Wolf & Michelle Muse-Worthy, Secretary **Linda MacClinton**, Treasurer

**MEETING MINUTES
 February 10, 2022**

Call to Order

Kara Clarke called the meeting to order at 6:30 p.m. A quorum of members was present.

Members Present: -

Karima Alwishah Dearborn	Elia Syed Dearborn	Iesha Brassell Dearborn Heights #7	Joann Goree Detroit	Sharene Nathan Detroit
Tiffany Edmonds- Jasso Ecorse	Jennifer Seal Garden City	Helena Stephenson Harper Woods	Crystle Upshaw Lincoln Park	Kara Clarke Livonia
Michelle DeJesus Melvindale-NAP	Clare Brick Northville	Maria Warmuth Northville	James Michalik Plymouth-Canton	Khalilah Montgomery Redford Union
Linda MacClinton Redford Union	Monique Draw River Rouge	Tracee Winston South Redford	Jamie Czernik Trenton	Steven Bejarano Wayne-Westland
Kristen Bejarano Wayne-Westland	Priscilla Grossenheider- Albano Woodhaven/B.town	Victoria Martinez Wyandotte	Jessica Owulette Plymouth Scholars	Samara Wolf Quest Charter

Members Excused: Michelle Muse-Worthy,

Guests Present: Bridget Green, Stephanie Person, C. Pride, Christophel Kaounas, Ya Hussain, Darcy Matthies, Gail Strickland, Mike/Laura Francis, Beth Kohler

RESA Representatives: Vita Lusk, Celeste Johnson

Dates to Remember

<i>Dates to Remember</i>	
<i>Next Meeting on March 10, 2022</i>	<i>How to Develop & Maintain Trust in School-Family Partnerships of School</i>

I. Approval of Agenda

A copy of the meeting agenda was emailed and posted to the website for members in advance and made available at the meeting. A motion was made by Clare Brick and seconded by Michelle DeJesus to accept the agenda. Motion was supported by a majority of members present. No objections were made.

Objections: _____

II. Approval of Minutes

A copy of the meeting agenda was emailed and posted to the website for members in advance. A motion was made by Jim Michalik and seconded by Joann Goree to accept the minutes as noted. Motion supported by majority present. No objections were made.

Objections: _____

III. Presentation:

This month we had Bridget Green, LPC, NCC with Midwest Wellness and the topic was *Mental Health and the Caregiver*. Bridget discussed the stages of caregiver burnout, and strategies for dealing with caregiver burnout along with some resources. Please see the presentation for details.

Bridget Green, LPC, NCC
Clinical Director
Bridget@midwestwellnessclinic.com
313-587-9963
<https://midwestwellnessclinic.com>

IV. Chairperson Report –

Conferences – just a reminder that as a WCPAC member you are able to attend a relevant conference and be reimbursed. Please see your member pack for all of the details. MTSA conference has been cancelled for this year, however they have a new “after hours” series. Please see the website for all the details.

<https://www.michigantsa.org/mtsa-after-hours/>

START conference is May 2, 2022. As of right now START will be held in person. Please see the website for all the details.

<https://www.gvsu.edu/autismcenter/start-conference-167.htm>

Autism Alliance of MI’s conference is March 18, 2022. This is being held in person and there’s a virtual option. This conference is free of charge. Please see the website for details.

<https://autismallianceofmichigan.org/2022-conference/>

Wallace Financial is offering a free virtual Special Needs Planning Workshop. The next workshop is April 5, 2022 at 12:00pm. Please see the flyer on page 5 for details.

If you come across a conference that you’d like to attend, please reach out to Vita or Kara and we’ll advise you of the next steps.

V. **Vice Chairperson Report-** If you are a new member and have not yet received a member packet, or if any of your contact information has changed, please contact Jennifer Seal.

VI. **Secretary Report-** If you need business cards, please contact Samara Wolf so she can gather the necessary information for RESA. Even though we are not meeting in person please make sure you sign in at each meeting, for minute purposes but also for year-end mileage reimbursement (only applies for in person meetings). If it is a virtual meeting, please make sure a member of the board knows you are there so you can be accounted for.

VII. **Treasurer Report -** The account balance is \$2,251.30.

VIII. **Subcommittee Reports-**

- Special Recognition: Start thinking about recognizing people in our community who provide support to those with special needs. After a live poll during the meeting, Special Recognition will be held on Thursday, May 19, 2022, at 6:30pm, via Zoom. This subcommittee will discuss everything in detail at the March WCPAC meeting.
- Nomination Subcommittee – nominations for the Executive Board (EB) will be accepted beginning with the March meeting. Please reach out to the EB with questions and see your member pack for all the details.

IX. **RESA Reports –** Vita Lusk-

Vita introduced us to Celeste Johnson. Celeste is a new Special Education Consultant. She has a wealth of knowledge and experience and will be working with Vita and the WCPAC.

The General Supervision and Accountability team has been supporting districts and PSAs on improving compliance and student outcomes with an extra focus on B-12 Early Childhood Transition, B-13 Secondary Transition, and State Assessments. This year Graduation/Dropout was added to the focus.

By the end of March, all LEAs and PSAs will have been provided with training related to the areas identified above.

Another area of work which is a requirement for all ISDs in the state of Michigan is ISD Self-Assessment Tool. The General Supervision consultants work on the continued development and implementation of a system of supervision which supports the improvement of educational results and outcomes for students with IEPs. This system is made up of eight components which are designed to ensure ISDs are meeting the requirements of IDEA.

Each month, the GSA Team members meet with representatives from Michigan's Office of Special Education to review 1 of the 8 components of the Self-Assessment Tool. To date, 3 of 8 components have been presented to the Office of Special Education.

Additionally, the General Supervision Team is involved in the Data Use and Action Process. The goal of this work is to support member districts with building capacity and improving outcomes using a data driven process. This involves spending 8 ½ days in Lansing throughout the 2021-2022 school year. A district has volunteered to be part of this process and will work closely with WRESA's GSA team, as well as MDE/OSE representatives throughout this year.

X. **Member Reports-**

Clare Brick from Northville: Clare shared that she is now a Parent Advocate with MI UCP, MI United Cerebral Palsy. Sixty-five percent of the people that they support have a disability other than cerebral palsy. <https://www.mi-ucp.org/>

Sharene Nathan from DPSCD: The district is face to face as of February and have required mandated vaccinations. Staff and students are tested weekly for COVID, and numbers are remaining low. Count day was good. Peer to Peer is also being implemented in the district, Sharene is a trainer after completing the training with START. Full roll out will be in September of 2022.

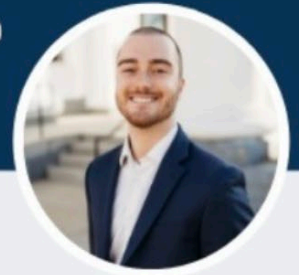
XI. Adjournment

A motion was made by Sharene Nathan and seconded by Iesha Brassell to adjourn the meeting at 8:10 p.m. Motion passed by majority present. No objections were made.

**The next WCPAC meeting is scheduled to be virtual on Thursday, March 10, 2022 at 6:30pm.
When in person, meetings are held at Wayne RESA in the Boyd's Arthur's Auditorium.**

SPECIAL NEEDS PLANNING WORKSHOP

YOU'RE INVITED!



This workshop is designed to provide families with confidence and clarity around planning for the future of their child or loved one with special needs.

Nick Wallace, ChSNC, RICP is a financial advisor specializing in helping families across the United States plan for their loved one's future with special needs. Nick serves as co-guardian and future trustee for his brother, Aaron who has physical and intellectual disabilities.

WHEN:

Tuesday, April 5, 2022
12:00PM EST

WHERE:

ZOOM- Register for link



TOPICS:

- Why plan?
- Nick's Personal Experience
- ABLE accounts
- Special Needs Trusts
- Financial Strategies
- Open Q & A

REGISTER NOW: text WORKSHOP to 859.446.4445

Email our team directly or visit our website to learn more about Special Needs Planning:

nick.wallace@nm.com | www.nickwallace.nm.com