

IB Course Catalogue

Marymount has offered the IB program since 1985, placing it as one of Rome's first schools to implement this program. The International Baccalaureate (IB) is a two-year pre-university program of study designed to meet the needs of students in international schools throughout the world. Those who wish to pursue an IB diploma or IB subject certificates should be prepared to follow a highly demanding program in Grades 11 and 12 that includes the study of languages, individuals and societies, experimental sciences, math and computer science, and the arts.

In order to receive the IB Diploma, students will sit for examinations in six subject areas at the conclusion of Grade 12 as well as follow a course in Theory of Knowledge, the focus of which is to demonstrate the interdependence of various subjects. Lastly, students must also submit an Extended Essay and participate in Creativity, Activity, and Service (CAS) programs.

More than half of all IB candidates worldwide are from the USA, where IB classes can make college applications stronger and may offer the opportunity to receive university credit. The IB also prepares students for admission to colleges and universities from countries worldwide, including the UK and Italy, where Marymount's IB Program is recognized by the Ministry of Public Instruction for entrance to Italian universities.

Subject Areas

The IB Diploma candidate studies and takes exams in six subjects, one from each of the categories listed below (three at Higher Level, three at Standard Level) as well as a course in Theory of Knowledge and complete CAS (Creativity, Activity and Service).

Group 1: Language A*: English Literature or English Language and Literature, Italian Literature or Italian Language and Literature, French Literature, Arabic Literature, Chinese Literature, Russian Literature.

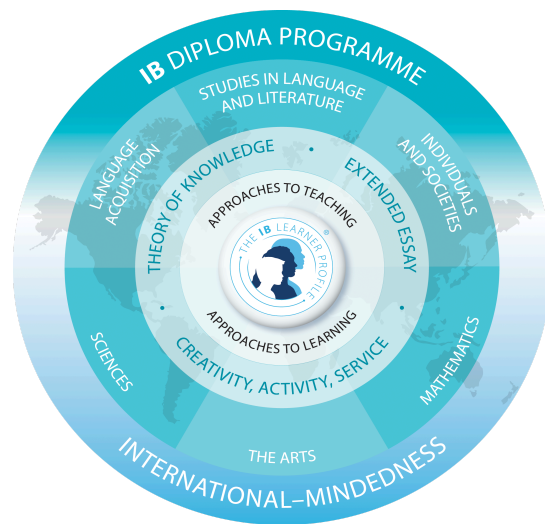
Group 2: Second Language*: English, Italian, Italian *ab-initio*, French, French *ab-initio*, Spanish, German, Chinese, Russian, Ancient Greek, Latin.

Group 3: Individuals & Societies: Business Management, Economics, History, Psychology, Environmental Systems and Societies.

Group 4: Experimental Sciences: Biology, Chemistry, Physics, Computer Science, Environmental Systems and Societies.

Group 5: Mathematics: Mathematical Analysis and Approaches, Mathematical Applications and Interpretation.

Group 6: The Arts: Visual Art, Music and Theater Arts (or students may substitute the Group 6 subject with a subject from Groups 2, 3, or 4)



Bilingual Diploma

A bilingual IB diploma is awarded to a successful candidate who fulfills one or more of the following criteria:

- Completion of two A languages (with the award of a score of 3 or higher in both)
- Completion of one of the subjects from group 3 or group 4 in a language that is not the same as the candidate's group 1 language. The candidate must attain a grade 3 or higher in both the group 1 language and the subject from group 3 or 4
- Completion of an Extended Essay in a Group 3 or Group 4 subject written in a language other than the candidate's Group 1 language.

IB DIPLOMA RECOGNITION IN ITALY

Diploma in Classics <i>Liceo Classico</i>	Diploma in Languages <i>Liceo Linguistico</i>	Diploma in Science <i>Liceo Scientifico</i>	Diploma in Humanities <i>Liceo Scienze Umane</i>
First Language <i>Prima Lingua</i>	First Language HL <i>Prima Lingua HL</i>	First Language <i>Prima Lingua</i>	First Language <i>Prima Lingua</i>
Latin HL <i>Lingua Latina HL</i>	Second Language <i>Seconda Lingua</i>	Second Language <i>Seconda Lingua</i>	Second Language <i>Seconda Lingua</i>
History or Economics or Psychology <i>Storia o Economia o Psicologia</i>	History or Economics or Psychology <i>Storia o Economia o Psicologia</i>	History or Economics or Psychology <i>Storia o Economia o Psicologia</i>	History or Psychology HL <i>Storia o Psicologia HL</i>
Chemistry or Physics or Biology or Environmental Systems and Societies <i>Chimica o Fisica o Biologia o Informatica o Scienze Ambientali</i>	Chemistry or Physics or Biology or Environmental Systems and Societies <i>Chimica o Fisica o Biologia o Informatica o Scienze Ambientali</i>	Chemistry or Physics or Biology <i>Chimica o Fisica o Biologia</i>	Chemistry or Physics or Biology or Environmental Systems and Societies <i>Chimica o Fisica o Biologia o Informatica o Scienze Ambientali</i>
Mathematics <i>Matematica</i>	Mathematics <i>Matematica</i>	Mathematics HL <i>Matematica HL</i>	Mathematics <i>Matematica</i>
Classical Greek <i>Lingua Greca</i>	Third Language <i>Terza Lingua</i>	Chemistry or Biology or Environmental Systems and Societies or Art <i>Chimica o Biologia o Scienze Ambientali Informatica o Arte</i>	History or Economics or Psychology or Art <i>Storia o Economia o Psicologia o Arte</i>

COURSE CATALOGUE

LANGUAGE AND LITERATURE



IB ARABIC A LITERATURE SL & HL Year 1 (Credit: 1)

The A language course should be taken in the student's best language. The focus is to develop students' skills in both critical reading and textual analysis of literary works. The model for Language A: Literature is the same at SL and HL. The major difference between Higher Level and Standard Level is the number of literary texts studied and the degree of sophistication required in expression and analytical skills. At Standard Level students study 10 works of literature and at HL students study 13 works of Literature. Fluency in the language is essential for success in this course at Higher Level. Texts studied include poetry, drama, short stories and novels originally written in Arabic as well as Literature in Translation.

IB ENGLISH A LITERATURE SL & HL Year 1

(Credit: 1) Prerequisite: English 10 and a grade of B or higher for Higher Level

The A language course should be taken in the student's best language. The focus is to develop students' skills in both critical reading and textual analysis of literary works. The model for Language A: Literature is the same at SL and HL. The major difference between Higher Level and Standard Level is the number of literary texts studied and the degree of sophistication required in expression and analytical skills. At HL students also write a literary essay. Fluency in the language is essential for success in this course at Higher Level. Texts studied include poetry, drama, short stories and novels originally written in English as well as Literature in translation..

IB ENGLISH A LANGUAGE AND LITERATURE SL & HL Year 1

(Credit: 1) Prerequisite: English 10 and a grade of B or higher for Higher Level

This course develops skills of textual analysis at both Standard and Higher Level as well as introducing students to media studies. Students explore and analyze the formal elements in both literary and non-literary texts. Topics in the language sections range from the study of rhetoric used in speeches and advertisements to the use of new media. The English A: Language and Literature course shares many of the overarching aims and objectives identified for the Literature course with an added emphasis on media studies and linguistics.

IB ITALIAN A LANGUAGE AND LITERATURE SL & HL - Year 1 (Credit: 1)

Prerequisite: Knowledge of the Italian language as a first language, ability to analyze both literary and non literary texts. Italian Literature 9 & 10 recommended.

The focus of this course is to develop critical reading and textual analysis of literary and non literary works. Language A language and literature comprises four parts. Two relate to the study of language (language in a cultural context and language and mass communication) and two to the study of literature. The study of texts, both literary and non literary, provides a focus for developing an understanding of how language works to create meanings in a culture, as well as in particular texts. The model for language A: language and literature is the same at SL and HL, but there are significant quantitative and qualitative differences between the levels. In the literature sections the number of texts prescribed is greater at HL than at SL. In the language section students are generally expected to cover many more texts of all kinds at HL than at SL.

IB FRENCH A LITERATURE SL & HL Year 1 (Credit: 1)

The A language course should be taken in the student's best language. The focus is to develop students' skills in both critical reading and textual analysis of literary works. The model for Language A: Literature is the same at SL and HL. The major difference between Higher Level and Standard Level is the number of literary texts studied and the degree of sophistication required in expression and analytical skills. At Standard Level students study 10 works of literature and at HL students study 13 works of Literature. Fluency

in the language is essential for success in this course at Higher Level. Texts studied include poetry, drama, short stories and novels originally written in Chinese as well as Literature in Translation.

IB RUSSIAN A LITERATURE SL & HL Year 1 (Credit: 1)- upon request

The A language course should be taken in the student's best language. The focus is to develop students' skills in both critical reading and textual analysis of literary works. The model for Language A: Literature is the same at SL and HL. The major difference between Higher Level and Standard Level is the number of literary texts studied and the degree of sophistication required in expression and analytical skills. At Standard Level students study 10 works of literature and at HL students study 13 works of Literature. Fluency in the language is essential for success in this course at Higher Level. Texts studied include poetry, drama, short stories and novels originally written in Russian as well as Literature in Translation.

IB LANGUAGE A SCHOOL-SUPPORTED SELF-TAUGHT LANGUAGES - ONLY SL (Credit: 1)

This course is part of the studies in language and literature group and offers a unique opportunity to study the literature of a mother tongue language that may not be offered at the school, as a school-supported self-taught student. The course is similar in content and concepts to standard level literature courses in the language A group. A certain level of autonomy is expected from students who will be asked to develop a list of literary works and a timeline. Students will also be expected to autonomously administer the 150 hours required for the study of the course, with the supervision of a teacher-mentor. This subject can only be taken at standard level.

LANGUAGE ACQUISITION

IB ARABIC B SL & HL - Year 1 (Credit: 1)

Prerequisite: 2 years previous study of the language for SL and 4 years study for HL

This is the first year of the Arabic B course, a language course designed for students with some previous learning of the target language. The main focus is on language acquisition and development of language skills through analysis of the five IB core themes. Language skills are developed through the study and use of a wide range of both written and spoken material. Group work is vital to the course as is the skill of listening. Throughout the course there will be an intensive study of texts (both literary and non-literary), and responses will be oral and written. The material is chosen to develop mastery of language skills and intercultural understanding. The second year of the course attempts to examine the relationship between language and culture in greater depth, while simultaneously preparing for the written examination and the individual oral assessment more intensively than during the first year. Higher level Language B requires an effective operational proficiency and the study of literary texts in the target language.

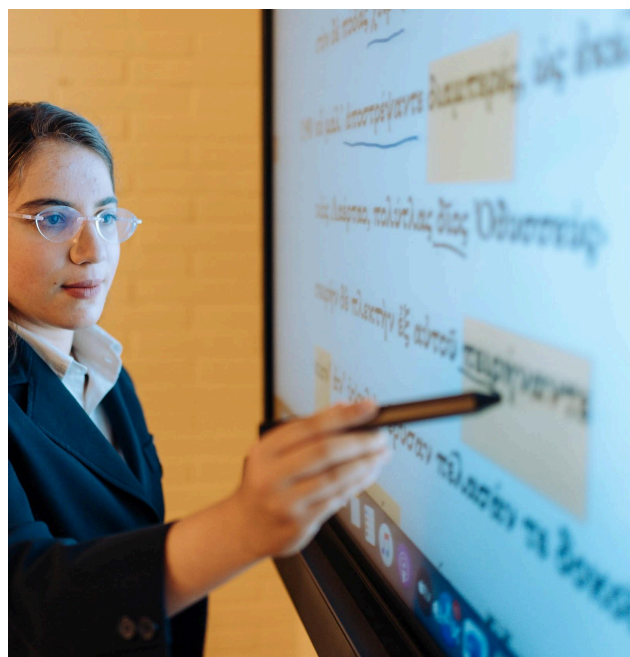
IB CHINESE B SL & HL Year 1 (Credit: 1)

Language B is a language course designed for students with some previous learning of the target language. The main focus is on language acquisition and development of language skills. These skills are developed through the study and use of a wide range of written and spoken material. This material will extend from everyday oral exchanges to literary texts, and is related to the culture concerned. The course revolves around five themes: identities, experiences, human ingenuity, sharing the planet and social organizations. It is also chosen to develop mastery of language skills and intercultural understanding. Higher Level Language B requires an effective operational proficiency as students will be assessed both orally and in writing on Literature.

IB CLASSICAL GREEK SL - Year 1 (Credit: 1)

Prerequisite: 1 year previous study of the language

Classical Languages in the IB are designed for students with some previous learning of the target language. The main focus is on language acquisition and development of language skills. These skills are developed through the study and use of a wide range of textual material. This material will extend from epic poetry to historical narrative, and is related to the culture concerned. Paper 1 requires students to translate a passage from the work of Xenophon, while Paper 2 is based on the study of set texts: part of Homer's *Odyssey* and a selection of historical texts revolving around the presentation of women. It is also chosen to develop mastery of language skills and intercultural understanding. In the internally-assessed research dossier, students have the opportunity to study any aspect of the classical world that is of interest to them. Higher Level Classical Languages require the study of more set texts and the development of skills in essay-writing.



IB ENGLISH LANGUAGE B SL & HL Year 1 (Credit: 1)

Prerequisite: 2 years previous study of the language for SL and 4 years study for HL

Language B is a language course designed for students with some previous learning of the target language. The main focus is on language acquisition and development of language skills. These skills are developed through the study and use of a wide range of written and spoken material. This material will extend from everyday oral exchanges to literary texts, and is related to the culture concerned. The course revolves around five themes: identities, experiences, human ingenuity, sharing the planet and social organizations. It is also chosen to develop mastery of language skills and intercultural understanding. Higher Level Language B requires an effective operational proficiency as students will be assessed both orally and in writing on literature.

IB ITALIAN B, SL & HL - Year 1 (Credit: 1)

Prerequisite: 2 years previous study of the language for SL and 4 years study for HL

Language B is a language course designed for students with some previous learning of the target language. The main focus is on language acquisition and development of language skills. These skills are developed through the study and use of a wide range of written and spoken material. This material will extend from everyday oral exchanges to literary texts, and is related to the culture concerned. The course revolves around five themes: identities, experiences, human ingenuity, sharing the planet and social organizations. It is also chosen to develop mastery of language skills and intercultural understanding. Higher Level Language B requires an effective operational proficiency as students will be assessed both orally and in writing on Literature.

IB ITALIAN ab initio (SL) - Year 1 (Credit: 1)

The *ab initio* language course is designed for students with little or no prior experience of the language they wish to study. The main focus is on language acquisition and development of language skills. These skills are developed through the study and use of a wide range of written and spoken material as students explore the five themes from the IB Diploma Language ab initio guide (first examination 2020): identities, experiences, human ingenuity, social organization and sharing the planet. The subject is only offered at Standard Level.

IB FRENCH LANGUAGE B SL & HL - Year 1 (Credit: 1)

Prerequisite: 2 years previous study of the language for SL and 4 years study for HL

Language B is a language course designed for students with some previous learning of the target language. The main focus is on language acquisition and development of language skills. These skills are developed through the study and use of a wide range of written and spoken material. This material will extend from everyday oral exchanges to literary texts, and is related to the culture concerned. The course

revolves around five themes: identities, experiences, human ingenuity, sharing the planet and social organizations. It is also chosen to develop mastery of language skills and intercultural understanding. Higher Level Language B requires an effective operational proficiency as students will be assessed both orally and in writing on Literature.

IB FRENCH ab initio (SL) - Year 1 (Credit: 1)

The *ab initio* language course is designed for students with little or no prior experience of the language they wish to study. The main focus is on language acquisition and development of language skills. These skills are developed through the study and use of a wide range of written and spoken material as students explore the five themes from the IB Diploma Language ab initio guide (first examination 2020): identities, experiences, human ingenuity, social organization and sharing the planet. The subject is only offered at Standard Level.

IB GERMAN B SL & HL - Year 1 (Credit: 1)

Prerequisite: 2 years previous study of the language for SL and 4 years study for HL

Language B is a language course designed for students with some previous learning of the target language. The main focus is on language acquisition and development of language skills. These skills are developed through the study and use of a wide range of written and spoken material. This material will extend from everyday oral exchanges to literary texts, and is related to the culture concerned. The course revolves around five themes: identities, experiences, human ingenuity, sharing the planet and social organizations. It is also chosen to develop mastery of language skills and intercultural understanding. Higher Level Language B requires an effective operational proficiency as students will be assessed both orally and in writing on Literature.

IB LATIN SL & HL - Year 1 (Credit: 1)

Prerequisite: 1 year previous study of the language for SL and 2 years study for HL

Classical Languages in the IB are designed for students with some previous learning of the target language. The main focus is on language acquisition and development of language skills. These skills are developed through the study and use of a wide range of textual material. This material will extend from epic poetry to courtroom speeches, and is related to the culture concerned. Paper 1 requires students to translate a passage from Ovid's *Metamorphoses*, while Paper 2 is based on the study of set texts: part of Virgil's *Aeneid* and a selection of historical texts revolving around the theme of 'Villains'. It is also chosen to develop mastery of language skills and intercultural understanding. In the internally-assessed research dossier, students have the opportunity to study any aspect of the classical world that is of interest to them. Higher Level Classical Languages require the study of more set texts and the development of skills in essay-writing.

IB RUSSIAN B SL&HL - Year 1 (Credit: 1) - upon request

Language B is a language course designed for students with some previous learning of the target language. The main focus is on language acquisition and development of language skills. These skills are developed through the study and use of a wide range of written and spoken material. This material will extend from everyday oral exchanges to literary texts, and is related to the culture concerned. The course revolves around five themes: identities, experiences, human ingenuity, sharing the planet and social organizations. It is also chosen to develop mastery of language skills and intercultural understanding. Higher Level Language B requires an effective operational proficiency as students will be assessed both orally and in writing on Literature.

IB SPANISH B SL & HL - Year 1 (Credit: 1)

Prerequisite: 2 years previous study of the language for SL and 4 years study for HL

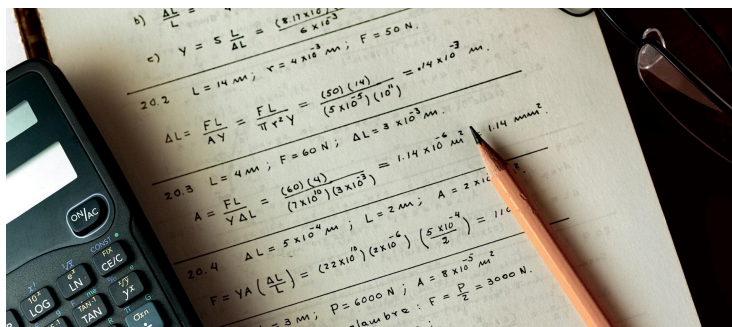
Language B is a language course designed for students with some previous learning of the target language. The main focus is on language acquisition and development of language skills. These skills are developed through the study and use of a wide range of written and spoken material. This material will extend from everyday oral exchanges to literary texts, and is related to the culture concerned. The course revolves around five themes: identities, experiences, human ingenuity, sharing the planet and social organizations. It is also chosen to develop mastery of language skills and intercultural understanding. Higher Level Language B requires an effective operational proficiency as students will be assessed both orally and in writing on Literature.

MATHEMATICS, SCIENCES AND TECHNOLOGY

IB MATHEMATICAL ANALYSIS AND APPROACHES SL Year 1 - (Credit: 1)

Prerequisites: Algebra II/Trigonometry and Teacher Recommendation

This two-year course is designed for students who have a strong background using algebraic approaches to solve problems in Mathematics. In this course, students are encouraged to apply their mathematical knowledge to solve abstract problems as well as those set in a variety of meaningful contexts. There is a strong emphasis on the ability to construct, communicate and justify correct mathematical arguments. The topics of study are Algebra, Functions and Equations, Circular Functions and Trigonometry, Statistics, Probability, and Calculus. Naturally, the SL course explores each topic area in less depth and the style of the problem set is less demanding than the HL course.



IB MATHEMATICAL ANALYSIS AND APPROACHES HL Year 1 (Credit: 1)

Prerequisites: Algebra II/Trigonometry and Teacher Recommendation

This two-year course is intended for students who wish to pursue studies in mathematics at university or subjects that have a large mathematical content; it is for students who enjoy developing mathematical arguments, problem solving and exploring real and abstract applications, with and without technology. It is designed for students with a very strong background in mathematics who are competent in a range of analytical and technical skills. This course requires students to study a broad range of mathematical topics through a number of different approaches and to varying degrees of depth. Core areas of study include: Algebra, Functions and Equations, Circular Functions and Trigonometry, Vectors, Statistics and Probability, and Calculus.

IB MATHEMATICAL APPLICATIONS AND INTERPRETATION SL YEAR 1 (Credit: 1)

Prerequisites: Algebra II and Teacher Recommendation

This is designed for students who enjoy the more practical side of mathematics. In this course, students are encouraged to solve real-world problems, construct and communicate this mathematically and interpret the conclusions or generalizations. The course is designed for those students who may find algebraic approaches to Mathematics more challenging and wish to develop strong technology skills. Topics of study are: Number and Algebra, Functions, Geometry and trigonometry, Statistics and probability, Calculus and Financial Mathematics. The subject is offered only at Standard Level.

SCIENCES



IB BIOLOGY SL & HL Year 1 (Credit: 1)

Prerequisite: HS Biology

This is a two-year course. Students will study the Core program in Biology that includes cell biology, molecular biology, genetics, ecology, evolution and biodiversity, and human physiology. Also a topic of particular interest called "Option" that will involve a study of neurobiology and behavior, biotechnology and bioinformatics, ecology and conservation, or human physiology. Students at higher level will cover nucleic acids, metabolism, cell respiration and photosynthesis, plant biology, genetics and evolution, and animal physiology.

IB CHEMISTRY SL & HL Year 1 (Credit: 1)

Prerequisite: HS Chemistry

IB Chemistry is an in-depth study of subjects taught in general Chemistry. The chemistry syllabus allows that SL and HL can be taught simultaneously; each topic has an SL component that all students study with extra content covered by students at HL. The emphasis in year 1 is physical chemistry, elementary inorganic chemistry and laboratory & analytical work. Scientific investigation skills, spanning the two-year program, are assessed internally by the teacher and externally by an IB examiner.

IB COMPUTER SCIENCE SL & HL Year 1 (Credit:1)

This is a two-year course. Computer science requires an understanding of the fundamental concepts of computational thinking as well as knowledge of how computers and other digital devices operate. The course draws on a wide spectrum of knowledge, enables and empowers innovation, raises ethical issues and is underpinned by computational thinking. Computational thinking involves the ability to think procedurally, logically, concurrently, abstractly and recursively and utilize an experimental and inquiry-based approach to problem solving. Students will be required to develop algorithms, express them clearly and appreciate how theoretical and practical limitations affect the extent to which problems can be solved computationally. During the course students will develop a computational solution and demonstrate the ability to identify a problem or unanswered question, design, prototype, program and test a proposed solution and liaise with clients and end users to evaluate the success of the proposed solution.

IB ENVIRONMENTAL SYSTEMS AND SOCIETIES - ONLY SL (Credit: 1)

Environmental systems and societies (ES&S) is an interdisciplinary group 3 and 4 course that is offered at standard level (SL). The prime intent for the course is to provide students with a coherent perspective of interrelationships between environmental systems and societies; one that enables them to adopt an informed personal response to the wide range of pressing environmental issues that they will inevitably come to face. The teaching approach is such that students are allowed to evaluate the scientific, ethical and socio-political aspects of issues. The subject is offered only at Standard Level.

IB PHYSICS SL & HL Year 1 (Credit: 1)

Prerequisite: HS Physics

This two-year course prepares students for the IB Physics examination. The course allows students to explore the nature of the universe and its physical laws. Topics of study include Physical Measurement, Mechanics, Thermal Physics, Waves, Electricity & Magnetism, Circular motion & Gravitation, Atomic, Nuclear & Particle Physics, and Energy Production. Topics of study for HL students include Wave Phenomena, Fields, Quantum & Nuclear Physics, and Electromagnetic Induction. Additionally students are required to study the Astrophysics option. Scientific investigation skills, spanning the two-year program, are assessed internally by the teacher and externally by an IB examiner.

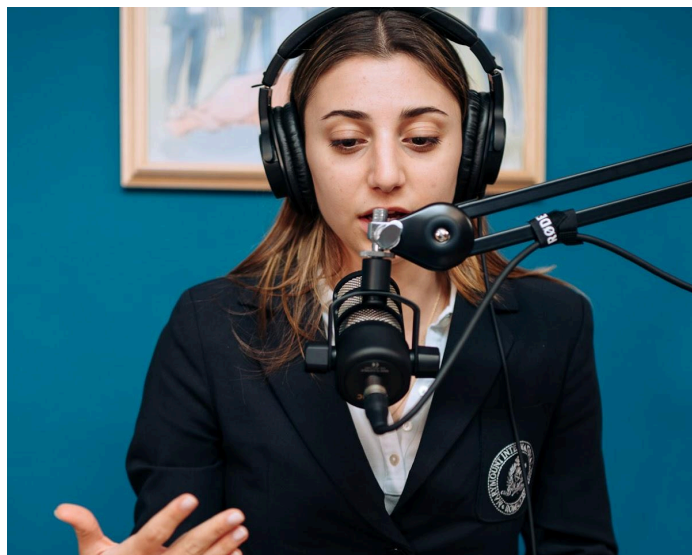
INDIVIDUALS AND SOCIETIES

IB BUSINESS MANAGEMENT SL & HL - Year 1 (Credit: 1)

This course aims to develop students' theoretical understanding of business management while exposing them to the practical application of theory in the context of business activities. The course explores business ventures in local, national and international contexts. Both Standard Level and Higher Level courses address core units on business organization and environment, human resource management, finance and accounts, marketing and operations management, with additional material in each unit studied in greater depth at higher level.

IB ECONOMICS SL & HL - Year 1 (Credit: 1)

The IB Economics course is a two year program that emphasizes the economic theories of microeconomics, which deal with economic variables affecting individuals, firms and markets, and the economic theories of macroeconomics, which deal with economic variables affecting countries, governments and societies. These economic theories will be applied to real world issues. Prominent among



these issues are fluctuations in economic activity, international trade and economic development.

IB ENVIRONMENTAL SYSTEMS AND SOCIETIES - ONLY SL (Credit: 1)

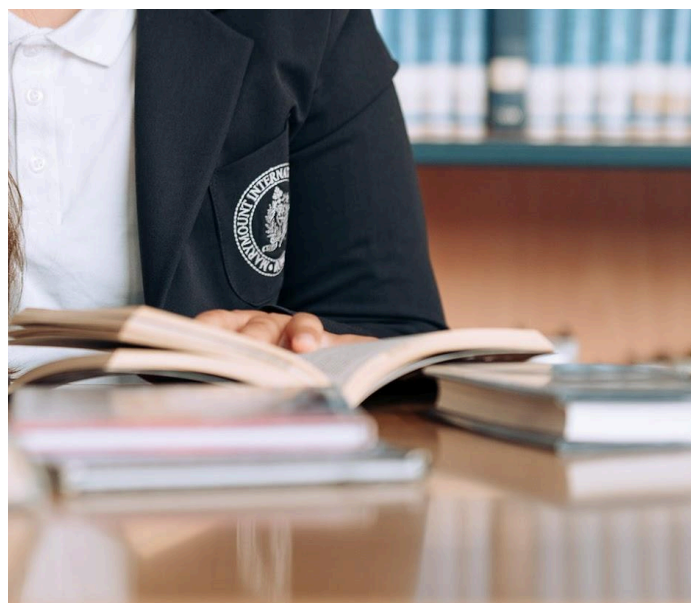
Environmental systems and societies (ES&S) is an interdisciplinary group 3 and 4 course that is offered at standard level (SL). The prime intent for the course is to provide students with a coherent perspective of interrelationships between environmental systems and societies; one that enables them to adopt an informed personal response to the wide range of pressing environmental issues that they will inevitably come to face. The teaching approach is such that students are allowed to evaluate the scientific, ethical and socio-political aspects of issues.

IB HISTORY SL & HL - Year 1 (Credit: 1)

IB History is a two-year program which prepares students for the International Baccalaureate examinations in 20th Century World History at either standard or higher level. The Standard Level course consists of two parts: an in-depth study of one prescribed subject (*Move to Global War*) in preparation for the document-based Paper 1 and an overview of two 20th century history topics (*Single Party States and Cause, Course and Consequence of 20th Century Wars*) in preparation for the essay based Paper 2. Higher Level students study additional content in preparation for a Paper 3 examination on three sections of 20th century European history. Students at both SL and HL are also required to complete an historical investigation on a topic of their choice.

IB PSYCHOLOGY SL & HL - Year 1 (Credit: 1)

This course on the science of psychology is part of the international baccalaureate program of coursework in group 3 and spans two years. Psychology is by its very nature a vast and dynamic subject. The demands of the syllabus are addressed in several ways to meet the goal of the IB learner profile: critical thinking, research activities and attainment of a specific body of knowledge. Topics covered will include research methods, genetics, cognitive processes, and three levels of analysis: biological cognitive and socio-cultural, abnormal psychology, health psychology, relationships, sport psychology and qualitative research. Since psychology is related to other disciplines such as history, anthropology, economics, and biology, students' knowledge base will be enriched and broadened with a careful study of psychology at the IB level.



IB THEORY OF KNOWLEDGE (TOK) 11 (Credit: ½)

This is a required course for the International Baccalaureate designed to enable students, through their own objective questioning and analysis, to appreciate the various ways in which knowledge is acquired. These reflections are then applied to the various skills and disciplines to which they have been introduced during their academic career. 'At the end of year 1, students complete a TOK Exhibition and report. In year 2, students submit an essay based on a prescribed title.'

PERFORMING ARTS



IB MUSIC SL & HL Year 1 (Credit: 1)

This two - year course gives students the opportunity to explore and enjoy the diversity of music of all genres throughout the world, encouraging them to develop perceptual skills through diverse musical experiences which they learn to recognize, analyze, identify and hypothesize in relation to music. During the course students extend their knowledge and abilities in performance, musicology and composition (using Sibelius software), as well as developing their potential as either solo and ensemble performers, or

as composers. The course is suitable for students with or without previous formal musical experience, although prior musical knowledge and experience would be highly recommended.

IB THEATER ARTS SL & HL - Year 1 Grades 11-12 (Credit: 1)

This two-year course combines practical and academic study in the subject of theater. It can be taken at either standard or higher level. The IB Diploma Programme Theater course is a multifaceted theater-making course of study. It gives students the opportunity to make theater as creators, designers, directors and performers. It emphasizes the importance of working both individually and collaboratively as part of an ensemble. It offers the opportunity to engage actively in the creative process, transforming ideas into action as inquisitive and productive artists. Students experience the course from contrasting artistic perspectives. They learn to apply research and theory to inform and to contextualize their work. The theater course encourages students to appreciate that through the processes of researching, creating, preparing, presenting and critically reflecting on theater—as participants and audience members—they gain a richer understanding of themselves, their community and the world.



VISUAL ARTS



IB VISUAL ART SL & HL - Year 1 (Credit: 1)

Prerequisite: Drawing & Painting

The IB Diploma Program visual arts course encourages students to challenge their own creative and cultural expectations and boundaries. It is a thought-provoking course in which students develop analytical skills in problem-solving and divergent thinking, while working towards technical proficiency and confidence as art-makers. In addition to exploring and comparing visual arts from different perspectives and in different contexts, students are expected to engage in, experiment with and critically reflect upon a wide range of contemporary practices and media. Supporting the International Baccalaureate mission statement and learner profile, the course encourages students to actively explore the visual arts within and across a variety of local, regional, national, international and intercultural contexts.