

30

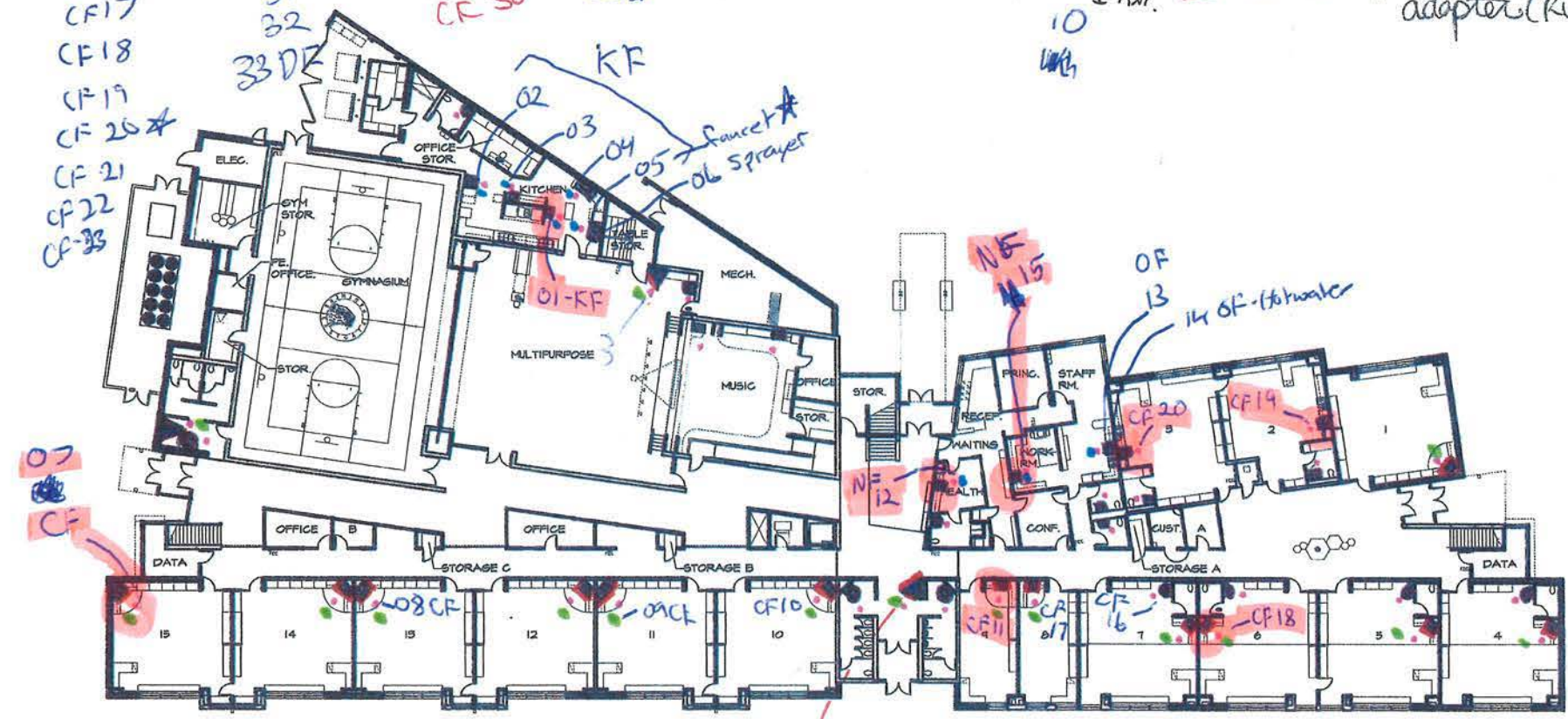
Free (9) | 4 DF/WC | 4 CDF | KF (5) | OF (3) | NF (1) | CF (4)

Portables

CF 11	25	CF 27	01	13	07
CF 16*	26	CF 28	02	14	08
CF 17	31	CF 29	03	15	09*
CF 18	32	CF 30	04*		10
CF 19			05*		with
CF 20*					
CF 21					
CF 22					
CF 23					

Counting as 1 fixt.

- - HANDSINK
- - Sensor/multi w. sh
- ▲ - Drinking Fountain
- - Sink w/ Bubbler adapter (Rubber)



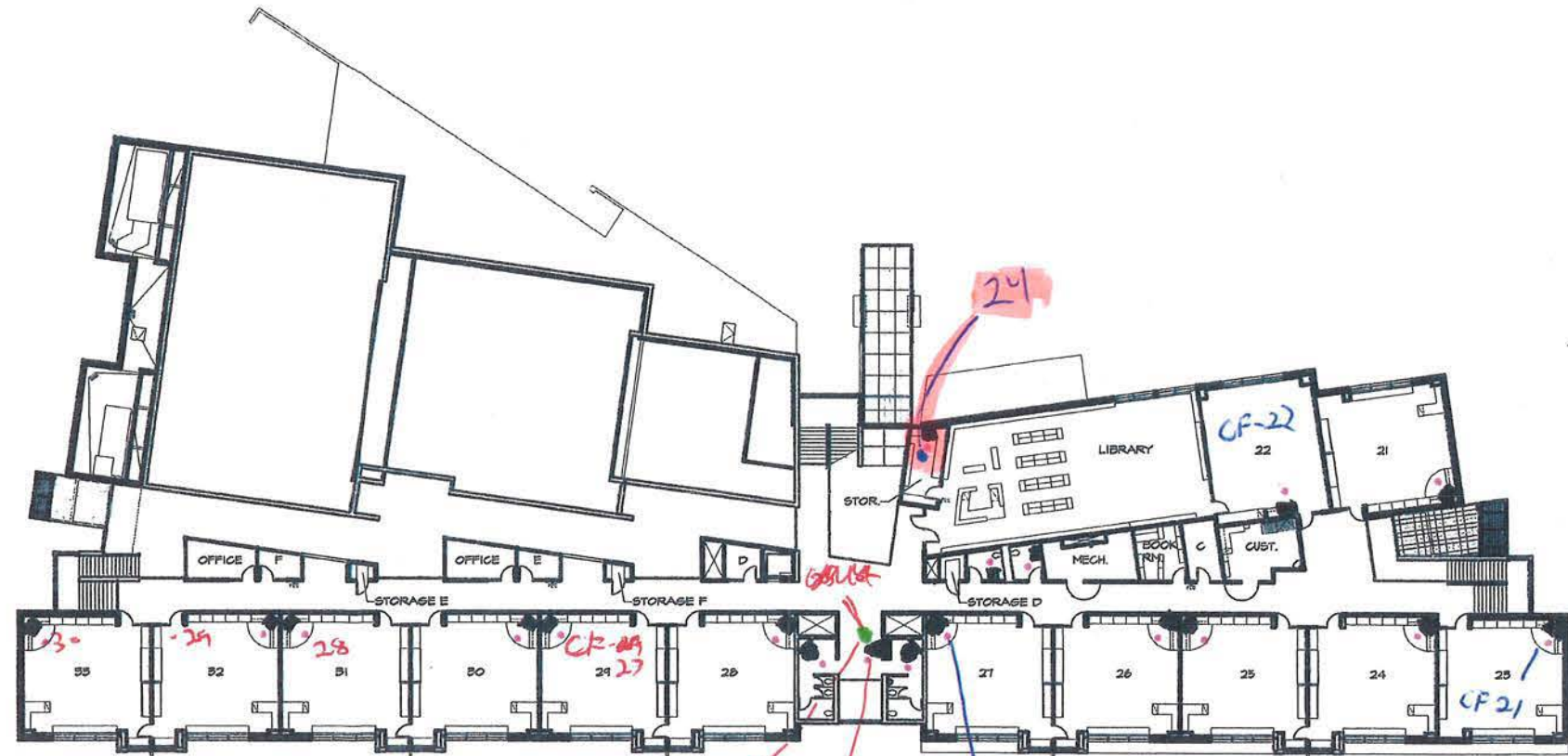
1st Floor	2nd Floor
CA DF: 3	1
CDF: 13	0
Kitch: 5	0
THR/OPP: 3	1
Class/Hall: 3	13
Total: 42	19

31 DF/WC / left  
 \* 32 DF/WC / right

Spokane, Washington (509) 596-7278   Kennecott, Washington www.mmeccarchitecture.com

1ST FLOOR PLAN  
 EASTGATE ELEMENTARY SCHOOL  
 910 E. 10TH AVE.  
 KENNEWICK, WA 99337

Date: 4-20-15  
 Drawn by: JSH  
 Checked by: DGM  
 Scale: 1" = 25'-0"  
 Sheet No: 1 OF 2



25 DR/WC left

26 DR/WC right



**MMEC**  
 ARCHITECTURE • INTERIORS  
 Spokane, Washington (509) 396-7278  
 Kennewick, Washington  
 www.mmeccarchitecture.com

2ND FLOOR PLAN  
 EASTGATE ELEMENTARY SCHOOL  
 910 E. 10TH AVE.  
 KENNEWICK, WA 99337

Date:	4-26-18
Drawn by:	JSH
Checked by:	DCH
Scale:	1"=25'-0"
Sheet No:	2 OF 2