



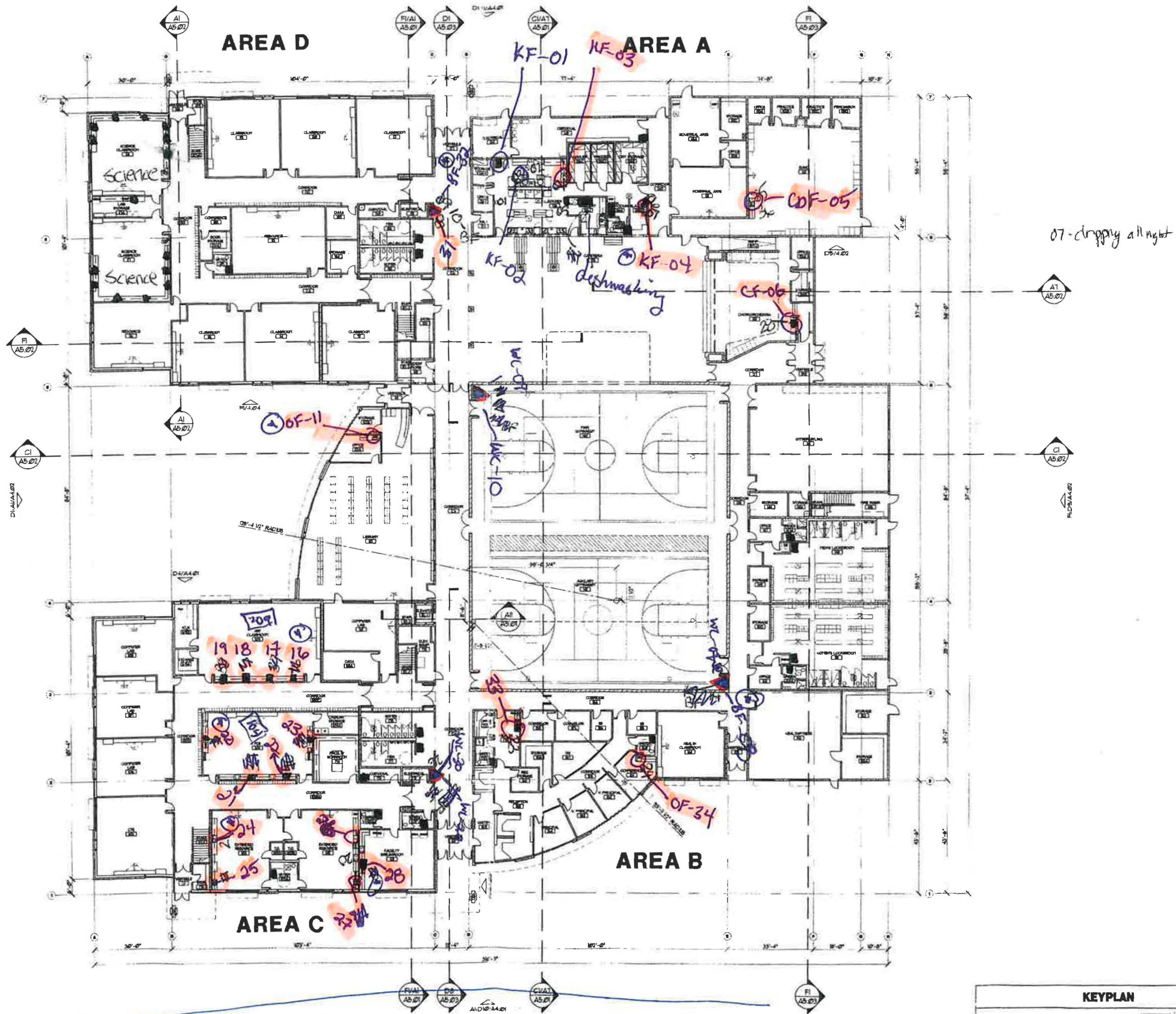


-  - Drinking Fountain
-  - Sink w/ Bubbler
-  - Handsink
-  - Sensor sink



07-dripping all night

W 27th Avenue



DESIGN WEST
ARCHITECTS P.A.
7510 UNIVERSITY AVENUE
KENNEWICK, WA 98502
PH: (509) 793-2844



KENNEWICK SCHOOL DISTRICT
Education for the Future

Chinook MS

CLODFELTER ROAD MIDDLE SCHOOL
KENNEWICK SCHOOL DISTRICT
CLODFELTER ROAD
KENNEWICK, WASHINGTON

REVISIONS

DRAWN BY: KC/M/L/M

CHECKED BY: SW

DATE: 02/18/15

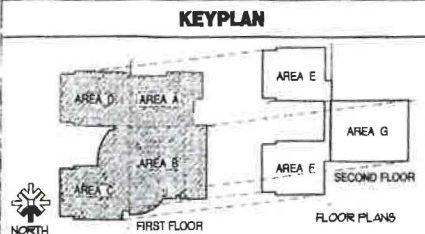
JOB NUMBER: 148

SHEET NAME:

FIRST FLOOR COMPOSITE PLAN

SHEET

A3.01A

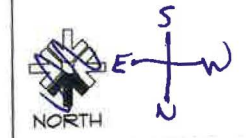


A1 FIRST FLOOR PLAN - COMPOSITE
SCALE: 1/8" = 1'-0"



NORTH

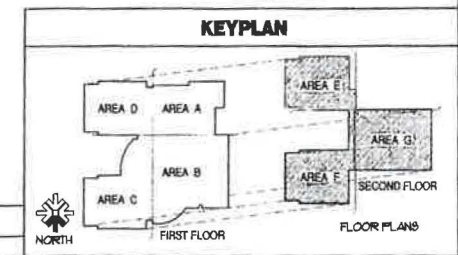
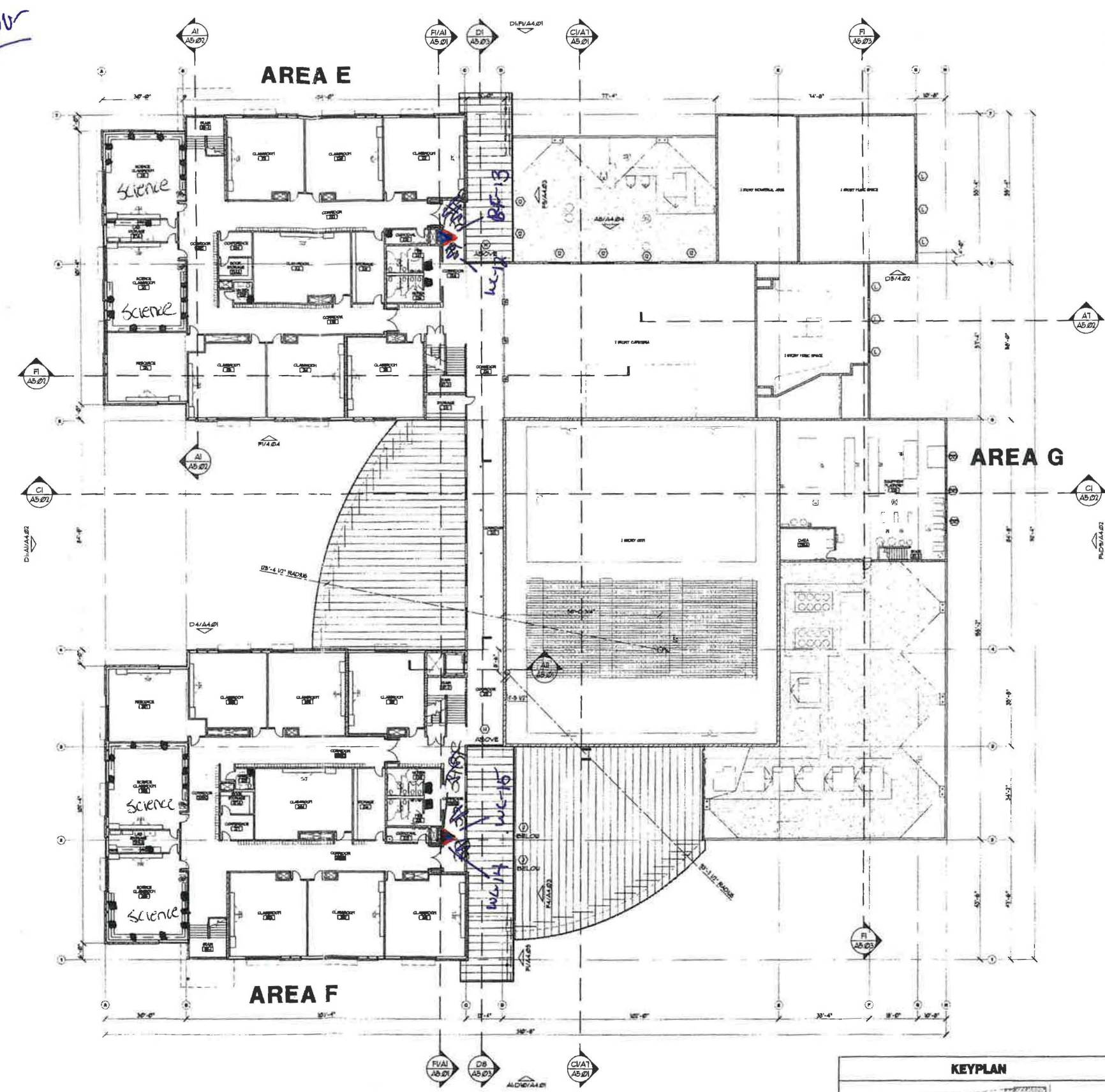
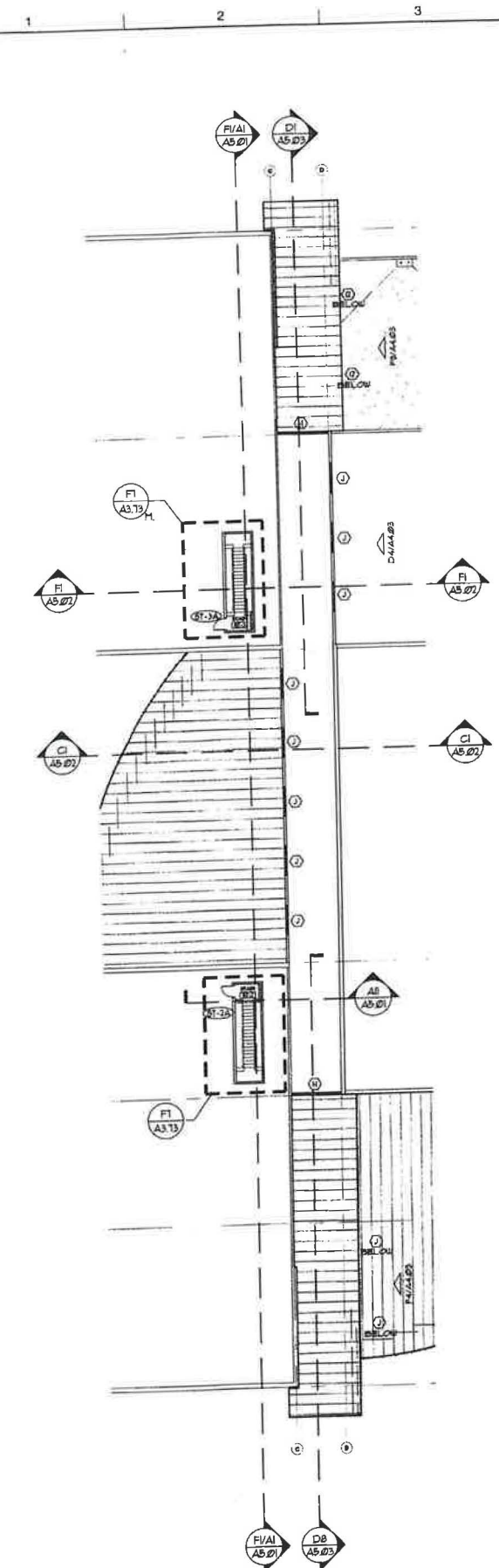
A1 THIRD FLOOR PLAN - COMPOSITE
SCALE: 1/8" = 1'-0"



NORTH

A4 SECOND FLOOR PLAN - COMPOSITE
SCALE: 1/8" = 1'-0"

2nd floor



REGISTERED ARCHITECT
BRANDON D. WILM
STATE OF WASHINGTON

DESIGN WEST
ARCHITECTS
A.P.C. # 14500
KENNEWICK, WA 98561
PH: (509) 783-0004



KENNEWICK
SCHOOL DISTRICT
1400 W. 10th Street
Kennewick, WA 98561

CLODFELTER ROAD MIDDLE SCHOOL
KENNEWICK SCHOOL DISTRICT
CLODFELTER ROAD
KENNEWICK, WASHINGTON

REVISIONS

DRAWN BY:
KC/JAL/AM

CHECKED BY:
DU

DATE
07/16/15

JOB NUMBER
148

SHEET NAME

SECOND & THIRD FLOOR COMPOSITE PLAN

SHEET

A3.01B