The background is a semi-transparent map of Northwest ISD attendance boundaries. The map shows various neighborhood names such as JUSTIN, ROANOKE, BEG, LAKEVIEW, HUGHES, GRANGER, THOMAS, and PENNVIEW. A large circular area on the left is highlighted in a darker shade of red, containing the text 'PROPOSED NORTHWEST ISD ELEMENTARY SCHOOL' and '940 LOTS'. The text 'Attendance Boundaries' and 'February 14, 2022' is overlaid in white in the center of the map.

# Attendance Boundaries

February 14, 2022

# District Attendance Boundary Team

## District Personnel

**Tim McClure**, Asst. Superintendent for Facilities

**Michael Griffin**, Asst. Superintendent for Curriculum

**Kim Barker**, Exe. Director of Human Resources

**Logan Faris**, Exe. Director of Secondary Education

**Kim Becan**, Exe. Director of Elementary Instruction and Campus Support

**Sarah Stewart**, Exe. Director of Planning

**Melissa DeSimone**, Exe. Director of Research, Assessment and Accountability

**Anthony Tosie**, Exe. Director of Communications

**Bobby Aucoin**, Exe. Director of Outsourced Operations

**Julie Meek**, Director of Data Services

**Principals of Affected Campuses**

# Adjusting Attendance Boundaries

## Guiding Growth Strategies

- Prevent Campus Overcrowding
  - Unsafe environment with too many students/staff in a building
  - Creates overcrowded classrooms that could negatively impact the learning environment
- Maintain Student/Teacher Ratios
- Minimize Future Boundary Changes and its Impact on Students
- Improve Efficiency of Schools

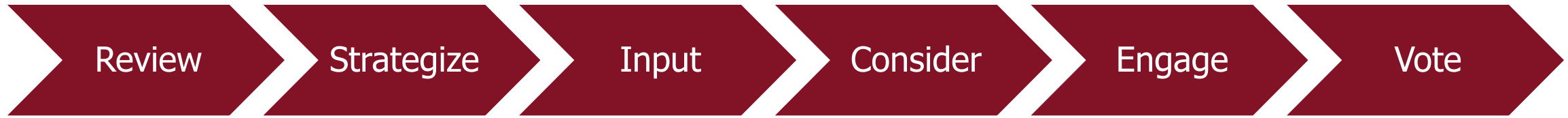


# How Do We Predict the Future?

It's like a game of Chess



# Attendance Boundary Process



## **Review NISD's Statistics & Future Projections**

- District History & Growth
- Demographic Growth Projections

## **Boundary Strategies**

- Prevent Campus Overcrowding
- Minimize Future Boundary Changes and its Impact on Students
- Maintain Student/Teacher Ratios
- Improve Efficiency of Schools

## **District Input**

- District Leadership
- School Principals

## **Board of Trustees**

- Consider Recommendations

## **Engage and Communicate with the Community**

- Affected Campus Presentations
- Facebook Live
- Social Media Posts
- Newsletters
- NISD Website
- Email Correspondence

## **Board of Trustees**

- Review Community Feedback
- Votes to Establish/Adjust Boundaries

# Attendance Boundary Timeline

## January 25<sup>th</sup> – February 14<sup>th</sup>

- District Attendance Boundary Team Meetings

## February 14<sup>th</sup>

- School Board Presentation of Recommended Changes

## February 15<sup>th</sup> – February 28<sup>th</sup>

- Engage and Communicate with the Community
  - Affected Campus Presentations
    - Haslet E.S. – Wednesday, February 16<sup>th</sup> 5:30-6:30
    - Curtis E.S. – Thursday, February 17<sup>th</sup> 5:30-6:30
  - Zoom Webinar
    - Tuesday, February 22<sup>nd</sup> 5:30-6:30
  - Social Media Posts, Newsletters and NISD Website Information
  - Feedback sent to [onthegrow@nisdtx.org](mailto:onthegrow@nisdtx.org)

## February 28<sup>th</sup> Board of Trustees

- Board of Trustees Votes to Establish/Adjust Boundaries

# Ten Year Forecast by Elementary Campus

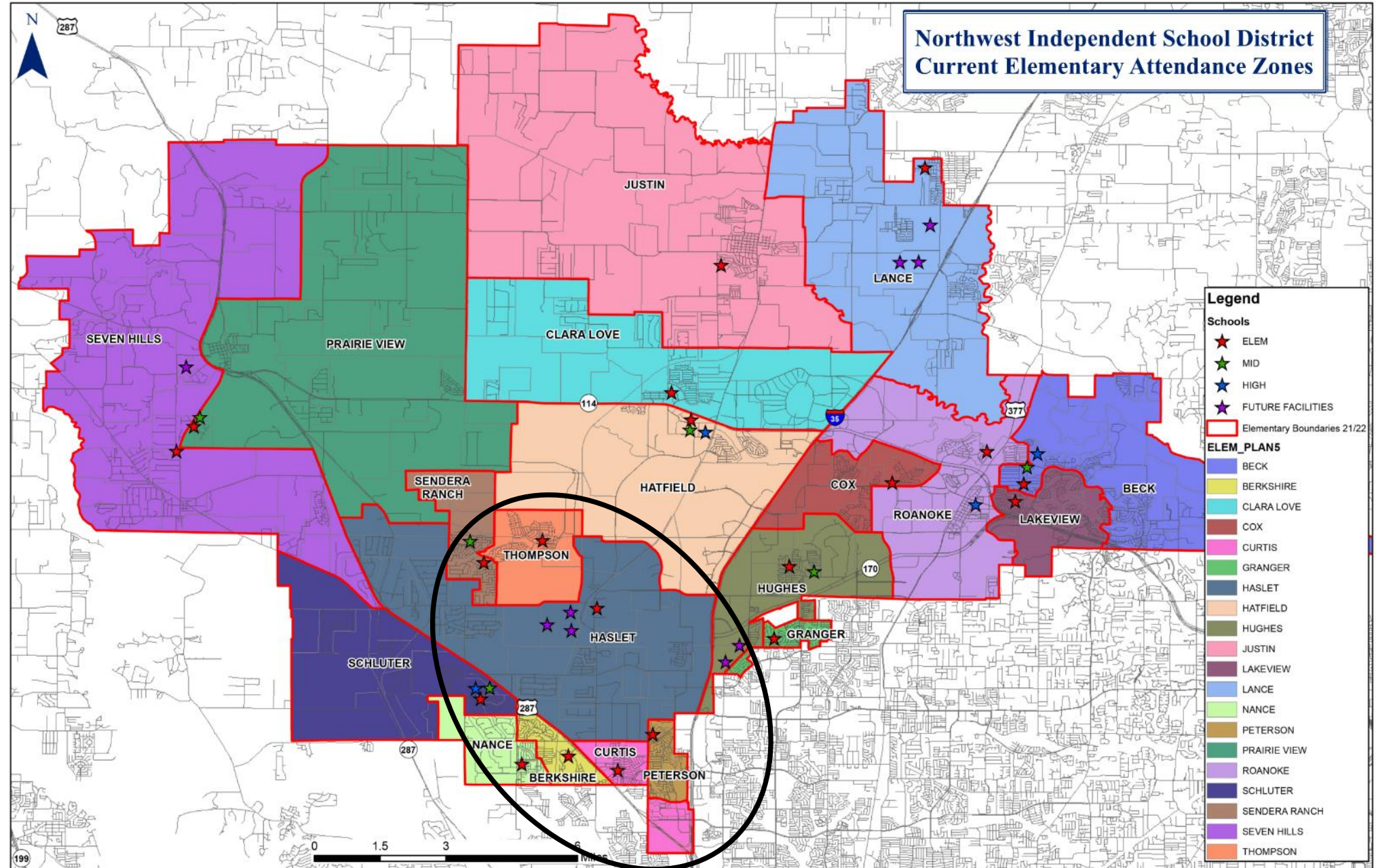
Campus	Capacity	Fall	ENROLLMENT PROJECTIONS									
		2021/22	2022/23	2023/24	2024/25	2025/26	2026/27	2027/28	2028/29	2029/30	2030/31	2031/32
Beck Elementary	850	755	758	733	745	750	736	724	718	711	705	701
Berkshire Elementary	850	598	687	734	785	825	858	842	833	816	801	789
Clara Love Elementary	850	644	709	780	864	954	1,041	1,113	1,175	1,236	1,281	1,328
Cox Elementary	850	757	796	792	803	805	814	814	794	785	765	755
Curtis Elementary	850	618	626	630	629	640	647	643	643	645	651	649
Granger Elementary	850	743	723	694	685	662	672	685	690	693	691	690
Haslet Elementary	850	775	1,057	1,343	1,623	1,838	1,988	2,068	2,124	2,169	2,186	2,183
Hatfield Elementary	450	510	588	668	755	813	870	912	953	996	1,022	1,048
Hughes Elementary	850	673	694	702	692	685	689	703	705	706	701	706
Justin Elementary	650	608	658	722	790	844	879	905	938	965	1,004	1,030
Lakeview Elementary	650	561	548	551	548	541	563	566	570	580	579	582
Lance Elementary	850	674	907	1,138	1,374	1,539	1,688	1,820	1,951	2,063	2,165	2,242
Nance Elementary	650	521	558	611	634	682	728	744	761	774	764	753
Peterson Elementary	850	685	682	652	633	605	621	613	610	604	601	601
Prairie View Elementary	650	590	639	703	777	884	1,034	1,173	1,299	1,406	1,509	1,593
Roanoke Elementary	850	656	637	657	665	661	654	653	656	664	665	665
Sendera Ranch Elementary	850	586	594	607	615	631	654	683	739	784	821	855
Seven Hills Elementary	650	602	708	830	949	1,069	1,194	1,266	1,355	1,443	1,521	1,594
Schluter Elementary	850	684	765	841	895	977	1,100	1,167	1,242	1,279	1,310	1,352
Thompson Elementary	850	795	907	996	1,034	1,045	1,077	1,065	1,032	1,010	996	966
<b>ELEMENTARY SCHOOL TOTALS</b>	15,600	13,035	14,241	15,384	16,495	17,450	18,507	19,159	19,788	20,329	20,738	21,082
Elementary Absolute Growth		1,257	1,206	1,143	1,111	955	1,057	652	629	541	409	344
Elementary Percent Growth		10.67%	9.25%	8.03%	7.22%	5.79%	6.06%	3.52%	3.28%	2.73%	2.01%	1.66%

# Ten Year Forecast by Secondary Campus

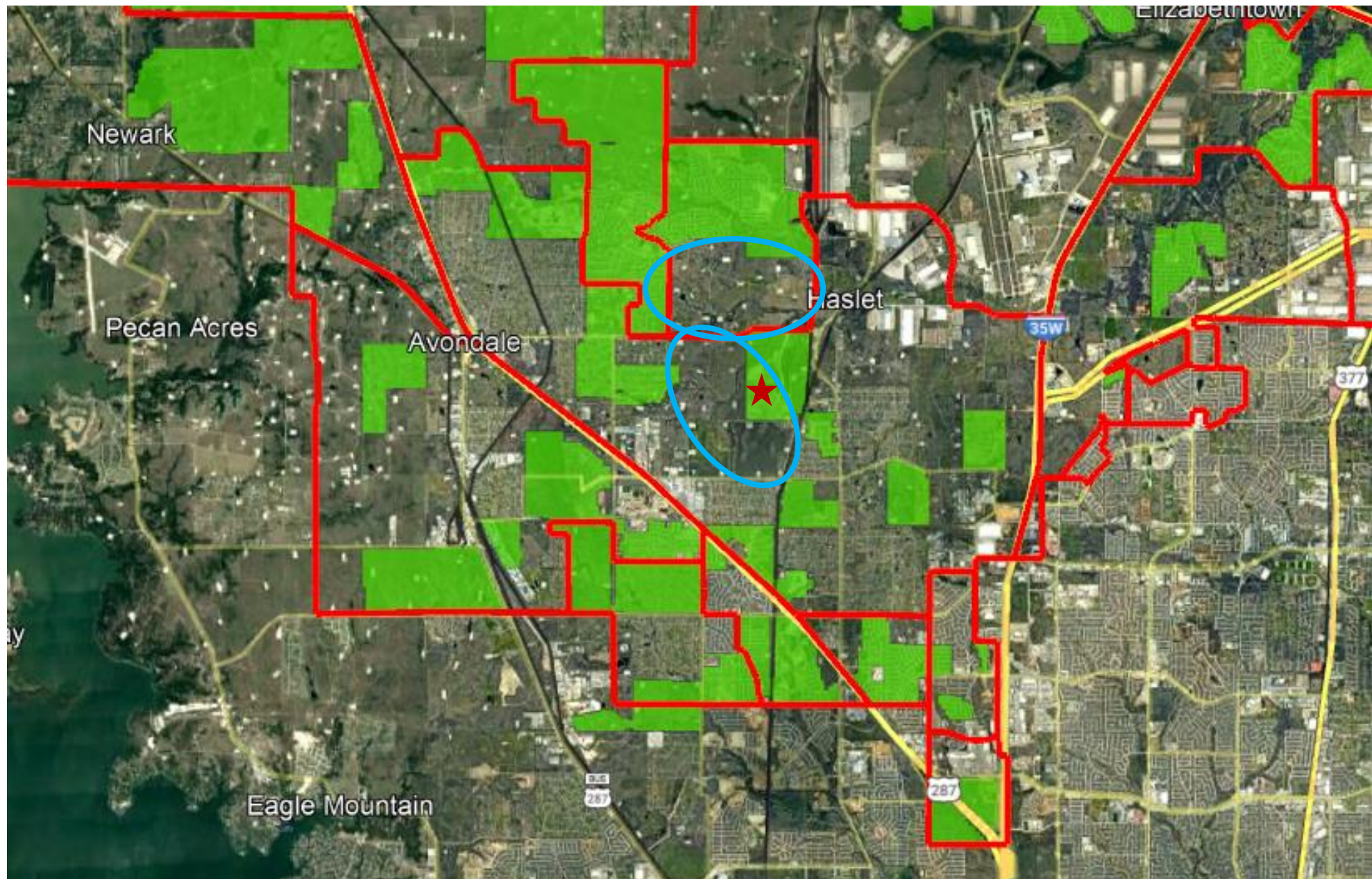
		Fall	ENROLLMENT PROJECTIONS									
Campus	Capacity	2021/22	2022/23	2023/24	2024/25	2025/26	2026/27	2027/28	2028/29	2029/30	2030/31	2031/32
Adams Middle School	1,200	1,331	1,393	1,474	1,552	1,576	1,583	1,663	1,814	1,978	2,023	2,051
Chisholm Trail Middle School	1,100	629	677	749	789	872	907	1,018	1,191	1,399	1,555	1,717
Gene Pike Middle School	1,100	1,111	1,215	1,322	1,471	1,646	1,899	2,158	2,390	2,556	2,704	2,896
Medlin Middle School	1,200	994	999	1,040	1,045	1,026	1,014	1,006	992	974	1,006	1,024
Tidwell Middle School	1,200	1,061	1,033	1,071	1,103	1,170	1,148	1,114	1,078	1,065	1,112	1,126
Wilson Middle School	1,200	1,294	1,386	1,494	1,656	1,810	1,987	2,180	2,363	2,471	2,500	2,546
<b>MIDDLE SCHOOL TOTALS</b>	7,000	6,420	6,703	7,150	7,616	8,100	8,538	9,139	9,828	10,443	10,900	11,360
Middle School Absolute Growth		355	283	447	466	484	438	601	689	615	457	460
Middle School Percent Growth		5.85%	4.41%	6.67%	6.52%	6.36%	5.41%	7.04%	7.54%	6.26%	4.38%	4.22%
Northwest High School	3,200	2,181	2,387	2,550	2,766	2,901	3,121	3,378	3,640	4,014	4,431	4,875
Byron Nelson High School	3,200	2,737	2,843	2,859	2,842	2,854	2,900	2,945	3,030	3,043	2,934	2,924
Eaton High School	3,200	2,999	3,237	3,442	3,673	3,855	4,067	4,396	4,609	4,855	5,269	5,588
Steele Accelerated High School	450	237	237	237	237	237	237	237	237	237	237	237
Denton County JJAEP		3	3	3	3	3	3	3	3	3	3	3
<b>HIGH SCHOOL TOTALS</b>	10,050	8,157	8,707	9,091	9,521	9,850	10,328	10,959	11,519	12,152	12,874	13,627
High School Absolute Growth		601	550	384	430	329	478	631	560	633	722	753
High School Percent Growth		7.95%	6.74%	4.41%	4.73%	3.46%	4.85%	6.11%	5.11%	5.50%	5.94%	5.85%
<b>DISTRICT TOTALS</b>	<b>32,650</b>	<b>27,612</b>	<b>29,651</b>	<b>31,625</b>	<b>33,632</b>	<b>35,400</b>	<b>37,373</b>	<b>39,257</b>	<b>41,135</b>	<b>42,924</b>	<b>44,512</b>	<b>46,069</b>
District Absolute Growth		2,213	2,039	1,974	2,007	1,768	1,973	1,884	1,878	1,789	1,588	1,557
District Percent Growth		8.7%	7.4%	6.7%	6.3%	5.3%	5.6%	5.0%	4.8%	4.3%	3.7%	3.5%



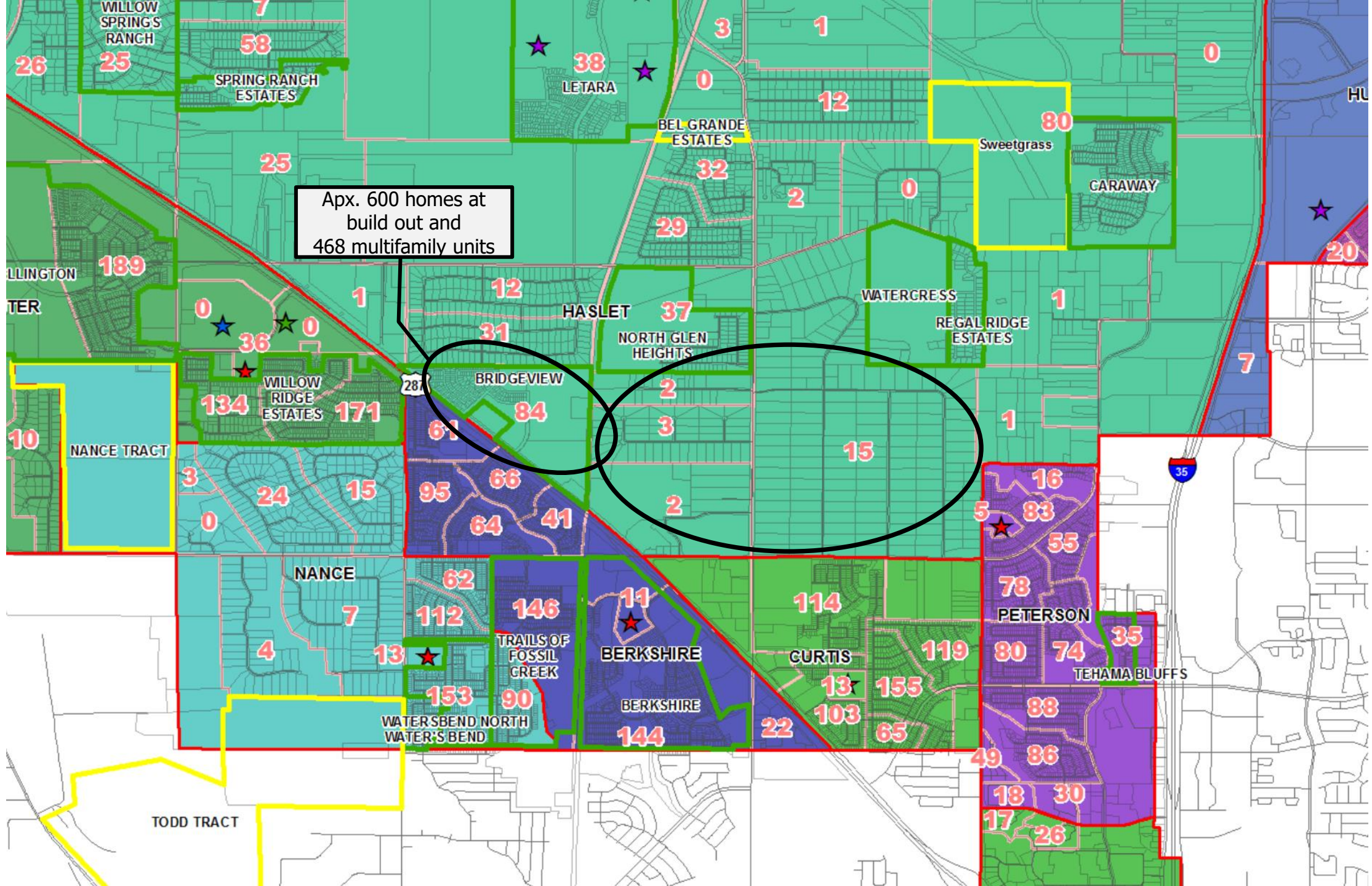
# Attendance Boundary Recommendations



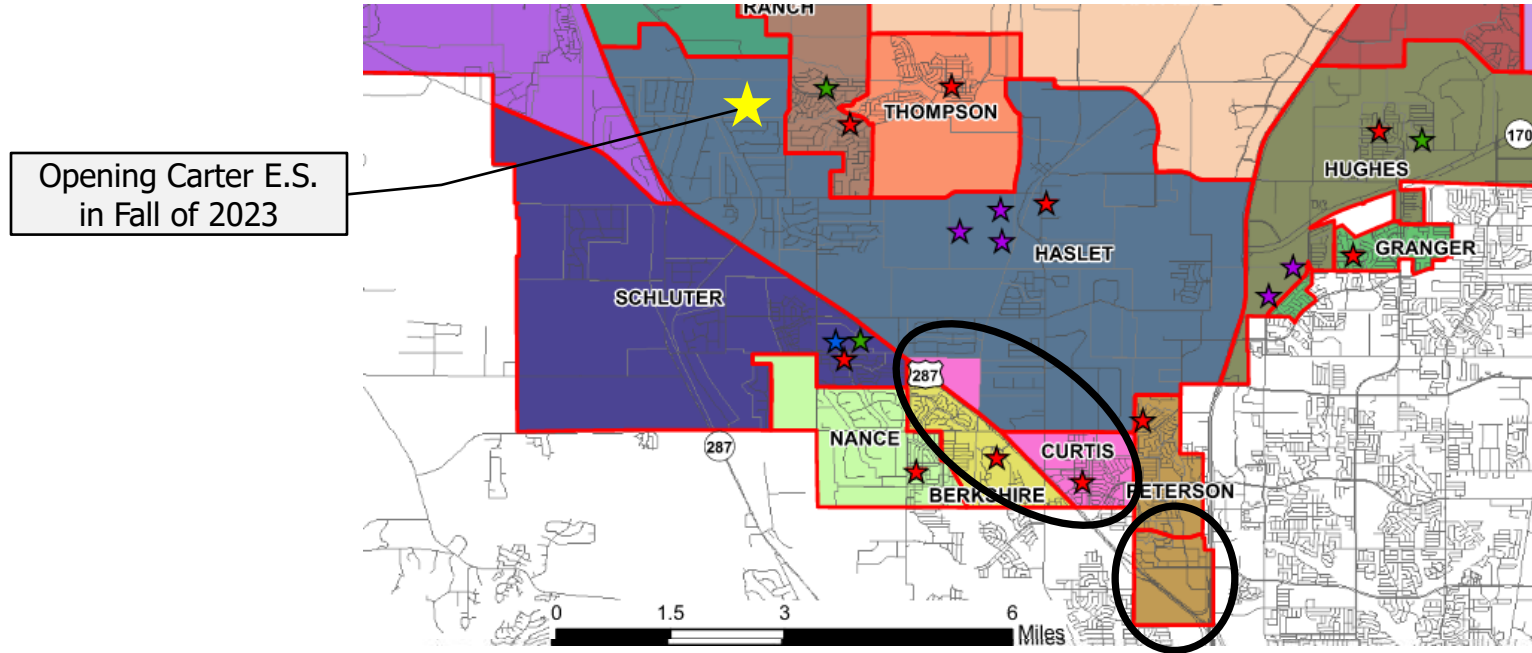








# Attendance Boundary Recommendations



## Current Boundary Forecast

SCHOOL	CAPACITY	2021/22	2022/23	2023/24	2024/25	2025/26	2026/27	2027/28	2028/29	2029/30	2030/31	2031/32
Curtis Elementary	850	618	626	630	629	640	647	643	643	645	651	649
Haslet Elementary	850	775	1,057	1,343	1,623	1,838	1,988	2,068	2,124	2,169	2,186	2,183
Peterson Elementary	850	685	682	652	633	605	621	613	610	604	601	601

## Recommended Boundary Forecast

SCHOOL	CAPACITY	2021/22	2022/23	2023/24	2024/25	2025/26	2026/27	2027/28	2028/29	2029/30	2030/31	2031/32
CURTIS	850	655	738	789	841	874	876	865	862	861	861	852
HASLET	850	669	907	1,131	1,357	1,555	1,706	1,794	1,852	1,893	1,909	1,908
PETERSON	850	791	721	705	687	657	674	665	661	664	670	676

# Attendance Boundary Recommendations

1. Students starting 5<sup>th</sup> grade next year would be eligible to remain at their existing elementary school.
2. Students choosing to remain would not receive bus transportation, and younger siblings would not be eligible.





# Discussion