



THE UPPER SCHOOL
CLASSROOM BUILDING INITIATIVE

Architecting the Dana Hall Experience



Bringing learning to life

Dana Hall students are ambitious and creative. They are eager to explore their interests and to engage with new challenges and subjects. When faced with demanding coursework and high expectations, how do they respond? Exactly as you might expect: They tackle them with joy and enthusiasm.

Dana Hall is a learning environment unlike any other that a young woman will experience, and it's our job to ensure our students have the spaces they need to realize their full potential.

That's why we're revitalizing our Upper School Classroom Building—first opened in 1956—to meet the needs of 21st-century learners: flexible classrooms that enable diverse learning styles, common spaces that foster connection and collaboration, brand-new art studios, a purpose-built chorus room, and fully accessible facilities that support all students.



A vision for Dana Hall's future

A central component of Dana Hall's strategic plan, Vision 2025, includes updating key sections of our physical campus to ensure they honor our history while still serving current and future generations of students. The Upper School Building Initiative represents an exciting opportunity to celebrate the best of our past while preparing our beloved institution for everything tomorrow holds.

Looking to our future as articulated in Vision 2025, we are poised for continued excellence by providing a vibrant campus, challenging curriculum and programming, and rich opportunities that are worthy of our students. To learn more about Vision 2025, visit [VISION2025.DANAHALL.ORG](https://vision2025.danahall.org).



Vision 2025 priorities

- Revitalizing our Upper School Classroom Building
- Investing in residential spaces for students and faculty
- Expanding our commitment to community, equity, and inclusion programming
- Growing the Dana Hall endowment
- Enhancing Bardwell Auditorium

We are more determined than ever to provide each of our students with the knowledge, tools, experience, and voice to make a difference—her way.

Our new Upper School Classroom Building will dramatically enhance the Dana experience across four critical dimensions:

- Collaborative Learning
- Accessible Learning
- Healthy Learning
- Sustainable Learning

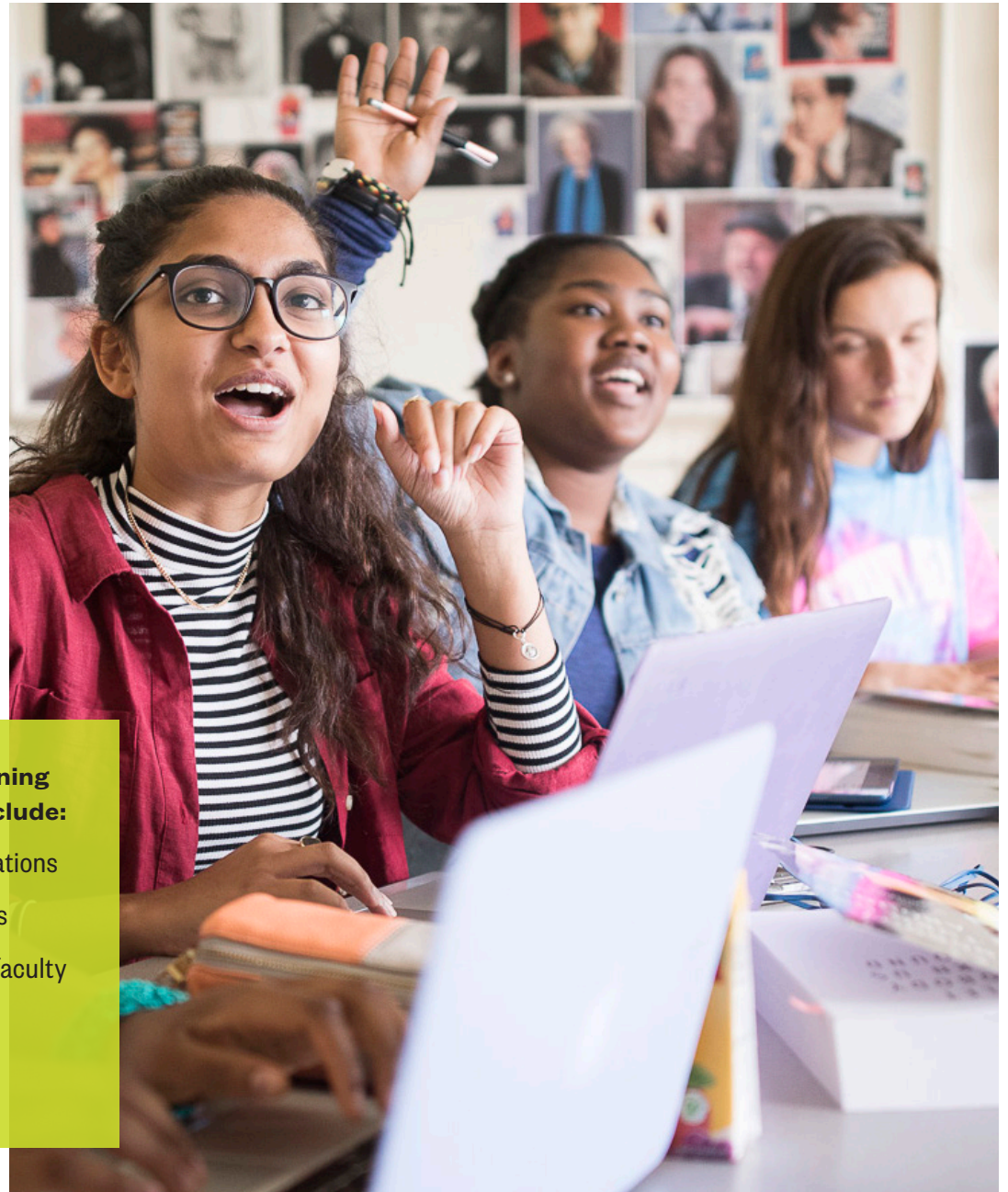
We're renovating and revitalizing our existing Classroom Building by adding new glass-clad atria at the north and south ends. The heart of the building will remain intact, but the interior will be entirely reconstructed to create best-in-class spaces for learning, teaching, and growing.

Collaborative learning

In today's dynamic workplaces, innovation is essential and the best work is teamwork. As Dana Hall prepares our students for success in college and beyond, we must give them the tools to become active and engaged collaborators.

To support a more collaborative learning environment, the new building will include:

- Larger classrooms with flexible configurations
- Shared and informal collaborative spaces
- Areas purpose-built for interdisciplinary faculty collaboration
- Administrative offices united in the academic building





Today, learning looks very different than it did in 1956!

Our new classrooms will facilitate discussion and group learning, and be easily reconfigured to suit the lesson (and subject) of the day.



Putting our heads together

A space that's designed with collaboration in mind will provide students—and faculty members and staff—with countless advantages. By bringing our community together under one roof, we will strengthen our students' intellectual explorations and supply them with even more opportunities to build meaningful relationships with their classmates. From larger classrooms set up for flexible learning configurations and group work to an enhanced, leading-edge Makerspace to support our expanded STEAM program, students will have the resources they need to continue on a journey of fearless learning, engaged inquiry, and personal expression.

Building community

Beyond the classroom walls, students will come together to study, complete projects, and engage in co-curricular work in spaces tailor-made for these purposes. Classes will spill out into common areas intended for discussion and teamwork, much as they would in the best-designed spaces in the professional world. Enlarging Waldo Auditorium to fit the entire student body and faculty will enable our community to come together within the academic building, contributing to a more connected, close-knit learning environment.

Accessible learning

Every student deserves the opportunity to dive fully into the Dana experience. Transparency, accessibility, and ADA compliance aren't the most glamorous aspects of a building project, but they are foundational to ensuring that everyone can fully engage with day-to-day learning at Dana Hall.

To support a more accessible learning environment, the new building will:

- Align with ADA requirements (elevator, ramps, accessible restrooms)
- Bring together diverse offices that support student success, such as Academic Support, College Counseling, and Math and Writing Labs
- Feature faculty spaces that are more accessible and visible to students and shared offices so teachers can better collaborate
- Include embedded technology in the classroom, such as screens and webcams that allow students and faculty to easily use technology on a daily basis



Open access

A classroom—no matter how great it is— isn't any help to a student who uses a wheelchair or is on crutches and has no way to reach the second floor. Enabling access through elevators and ramps will make a Dana Hall education available to all students—whether they are regular wheelchair users or recently suffered an injury on the sports field.

But that's just one form of accessibility. The new building will also provide **enhanced access to services, teachers, and technology**—and that will have a positive impact on every student in ways large and small.



Here are just a few examples of how increased accessibility will benefit our community:

- Student services will be more organically integrated into the Dana Hall experience. Rather than having to dedicate time to seek out their college counselor or learning specialist, students will be able to drop by on their way to class or have a conversation in the hallway.
- Teachers will see collaboration—with students and with one another—increase thanks to the design of their offices and collaborative spaces.
- New technology will provide access to external presenters and guests, global partner schools, and other forms of distance learning.

Open, airy spaces that are accessible by ramps and elevators ensure everyone can take full advantage of the Dana Hall experience.

Healthy learning

Dana Hall students should be joyfully and unabashedly engaged with their learning. They should have the opportunity and encouragement to dive headlong into their intellectual pursuits. That level of immersion is impossible if they are distracted by being too cold in the winter or too hot in the summer, by leaks in the ceiling or lighting that doesn't allow them to see the board clearly.

The Classroom Building is well-loved, but it's showing its age. By revitalizing it, we will provide the leading-edge learning environment that our students deserve—and that they need to become their best selves.





Now and in the future, we must ensure every student can benefit from in-person learning—and the powerful friendships it supports—within a safe, healthy environment.

In the zone

The new Upper School Classroom Building will provide a learning environment where students will be comfortable and at ease, free to focus fully on their schoolwork. They will be prepared daily for the realities of 21st-century learning and working. And they will be able to wholeheartedly immerse themselves in an education that is academically ambitious, rich with opportunity, and fiercely empowering.

To ensure healthy learning spaces in the new building, we will:

- Focus on air filtration and bring HVAC up to date
- Vastly improve the layout of the ground floor to create brighter, more spacious learning areas
- Introduce better lighting and improved acoustics throughout the building

Sustainable learning

If this building is to be an expression of Dana Hall's values, it's essential that we build it sustainably, cost-effectively, and with an eye to the world that tomorrow's students will inherit and inhabit.

Our LEED-certifiable building will feature:

- Mechanical systems that convert heat and increased insulation to help stabilize temperatures and limit energy costs
- Occupancy sensors and increased natural light to reduce electricity usage
- Sustainable building materials that reduce the carbon impact of construction



Today for tomorrow

Investing in a truly exceptional classroom building is not only a necessary step to support the education our students deserve—it's also a meaningful gift to future generations of Dana Hall students. And an important part of that gift is ensuring we remain financially and environmentally responsible.

One way to make good on that commitment is by restoring our existing building rather than constructing a new building from scratch—and that's what we're doing. Another is to ensure that

our building is designed with sustainability baked into the very walls. By making sustainability central to our effort, we will both increase the longevity of our investment and promote the longevity of our shared planet.

The Classroom Building has played an important role in the life of our community for more than 65 years.

Thanks to the building initiative, we'll ensure that legacy endures long into the future, helping new generations of Dana students feed their curiosity, sharpen their skills, and build lasting memories.



A new era of excellence

The Classroom Building has been a landmark on campus for 65 years. In the coming years, we will preserve and celebrate the traditions at the heart of this cherished building while reinforcing its role as a hub of learning, innovation, and community.

Thanks to the Upper School Classroom Building Initiative, we will be better positioned than ever to cultivate the confident, compassionate, intellectually curious young women who will be tomorrow's leaders—just as Dana Hall always has.



We hope you will consider contributing to this exciting effort.

To learn more about the Upper School Classroom Building Initiative and how you can support it, please contact Christie Baskett at 781-489-1371 or christie.baskett@danahall.org.