

THE HISTORY OF Border Star Montessori

In 1863, the pioneers living south of Brush Creek and adjacent to Westport organized a school district that became known as the Border Star District and the first school was built.



Border Star was closed near the end of the Civil War but reopened in 1865. In 1873, a new building was built at the site of the present Border Star School. In 1911, Border Star District was absorbed into the Kansas City School District.

In 1924, the cornerstone was laid for a new modern building, and the northeast wing was completed. About 1928, the present building of 22 classrooms was opened. The original little Border Star school house was incorporated into the caretaker's quarters at the northeast corner of the present building.



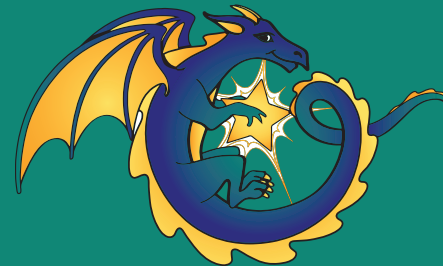
6321 Wornall Rd., Kansas City, Missouri 64113

(816) 418-5150

www.KCPublicSchools.org/BorderStar

Facebook: [KCPsBorderStar](#)

Twitter: [KCPs_BorderStarD](#)



DIVERSITY LEADERSHIP INNOVATION

HOME OF THE DRAGONS



OUR MISSION:

The staff of Border Star is committed to building relationships and upholding high expectations for all, in an intentionally prepared environment.



ABOUT BORDER STAR

Serving students

Pre-Kindergarten thru Sixth Grade

Bell Times:

8:20 am – 3:20 pm

Uniforms:

Solid white or navy blue short or long-sleeved shirt (must have a collar or turtleneck).

Tan (khaki) or navy blue pants, skirt, jumper or shorts. No denim is allowed.

Border Star Montessori School prepares the learner for life in a diverse educational and social environment. Each child will be encouraged to become a self-motivated learner and develop qualities of order, concentration and independence.

One of two public signature Montessori schools in the Kansas City metropolitan area, students residing within the KCPS school boundary are invited to apply. As a KCPS school, free breakfast and lunch are available for all Border Star students. Free transportation and before- and after-school care are also provided for students in grades K-6.

Strong parent support

Border Star is proud to have a strong parent support community that enriches the lives of our students. The parent-led Parent Teacher Association strives to provide a quality education for all students by involving community, family and business participation.

Learn more about our PTA here: www.BorderStarPTA.org.

Before- and after-school care

Border Star is proud to partner with LINC to offer free-of-charge, high quality before- and after-school care for students in grades K-6. Students are able to participate in a variety of safe, fun and engaging activities. LINC provides a caring environment that supports children's social, emotional and physical development.

MONTESSORI LIFE

Developed by Dr. Maria Montessori, the Montessori philosophy is an educational approach that emphasizes independence, freedom within limits and respect for each child's natural development. Our teachers promote hands-on learning through exploration and discovery.

Develop a life-long love of learning

Children follow their interests, wherever that passion leads. They develop a life-long love of learning through a balance of freedom and responsibility within the classroom.

Freedom to learn at your pace

Our students are in mixed-age groups that offer a variety of activities, enabling children to become peer teachers and learn from helping one another. They have the freedom to work at their own pace, and become self-motivated learners.

Signature School FAQ

Q: Who can attend Border Star?

A: Any student who lives within the Kansas City Public Schools attendance boundary and meets the school's enrollment requirements can attend a Signature School.

Q: How do I fulfill the additional admission requirements?

A: Once you have submitted your enrollment application, call the school office to schedule a time to complete the admission requirements.

Q: Can my student enroll in Border Star at any grade level?

A: After kindergarten, students must have a Montessori background to enroll.

Free Pre-K Program

Free Before & After School Care (K-6)

Free Breakfast & Lunch

Montessori Model United Nations

Honors Choir

Chess Club

Instrumental Music Class

Gardening

Ballet

Farmers Market

Green Team

