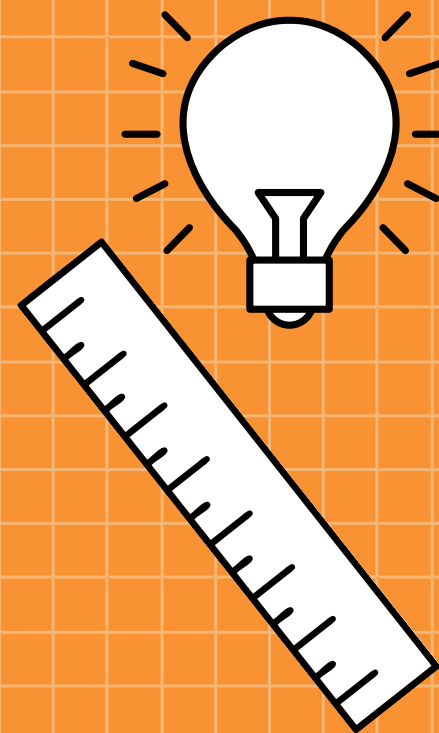


PSEO AT CENTURY COLLEGE

Pa Kue Vue

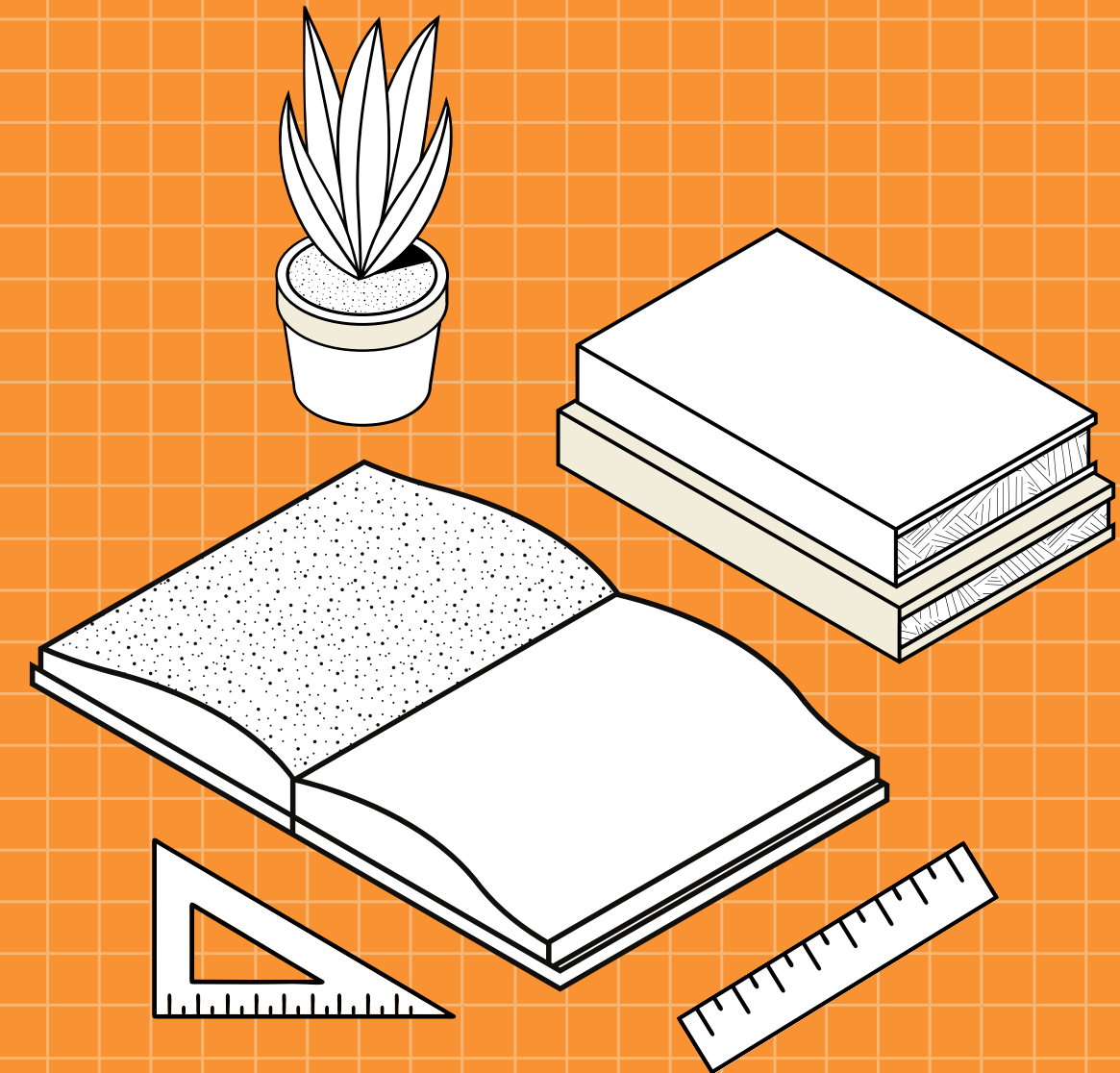
Admissions Representative

Interim-PSEO Coordinator



What is PSEO?

- The goal is to promote rigorous academic pursuits or career exploration.
- Students can receive high school & college credits.
- Students may enroll full-time or part-time.
- Open to Sophomores, Juniors & Seniors.



To be eligible, you must meet the admissions requirements of the post-secondary institution



WHAT ARE THE COSTS?

- The State of Minnesota pays for tuition & required text books.
- No additional fee for parking.
- **Students pay for:**
 - Any consumable supplies that will belong to them at the end of the semester (ex. Notebooks)

The Successful PSEO Student

- PSEO is not for everyone.
- Must be self-motivated.
- Students need to be very organized.
- Must be good with time management.
- Have a proven track record of academic success.
- Possess the maturity level to take on additional responsibilities.

***Be prepared for online coursework.**

Things to Keep in Mind

PSEO classes will be on both the high school & college transcripts.


Students will follow both the high school & college academic calendars.

PSEO students need to follow high school & college standards inside & outside the classroom. (Ex. Attendance)

2.0 GPA requirement (cumulative) and 67% completion rate.



MAY 30TH DEADLINE

- Students are **required** to notify their school district of possible PSEO enrollment by May 30th.
 - Schools have the ability to not approve PSEO participation if they are alerted after May 30th.
 - Post-Secondary institutions **do not** have the ability to supersede the secondary school's decision.
- 



Application Deadlines




Fall Term 2022

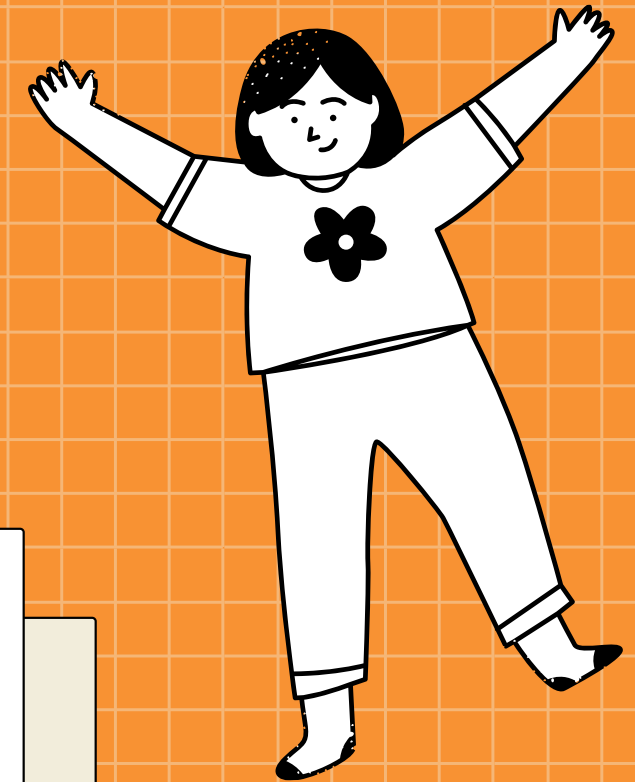


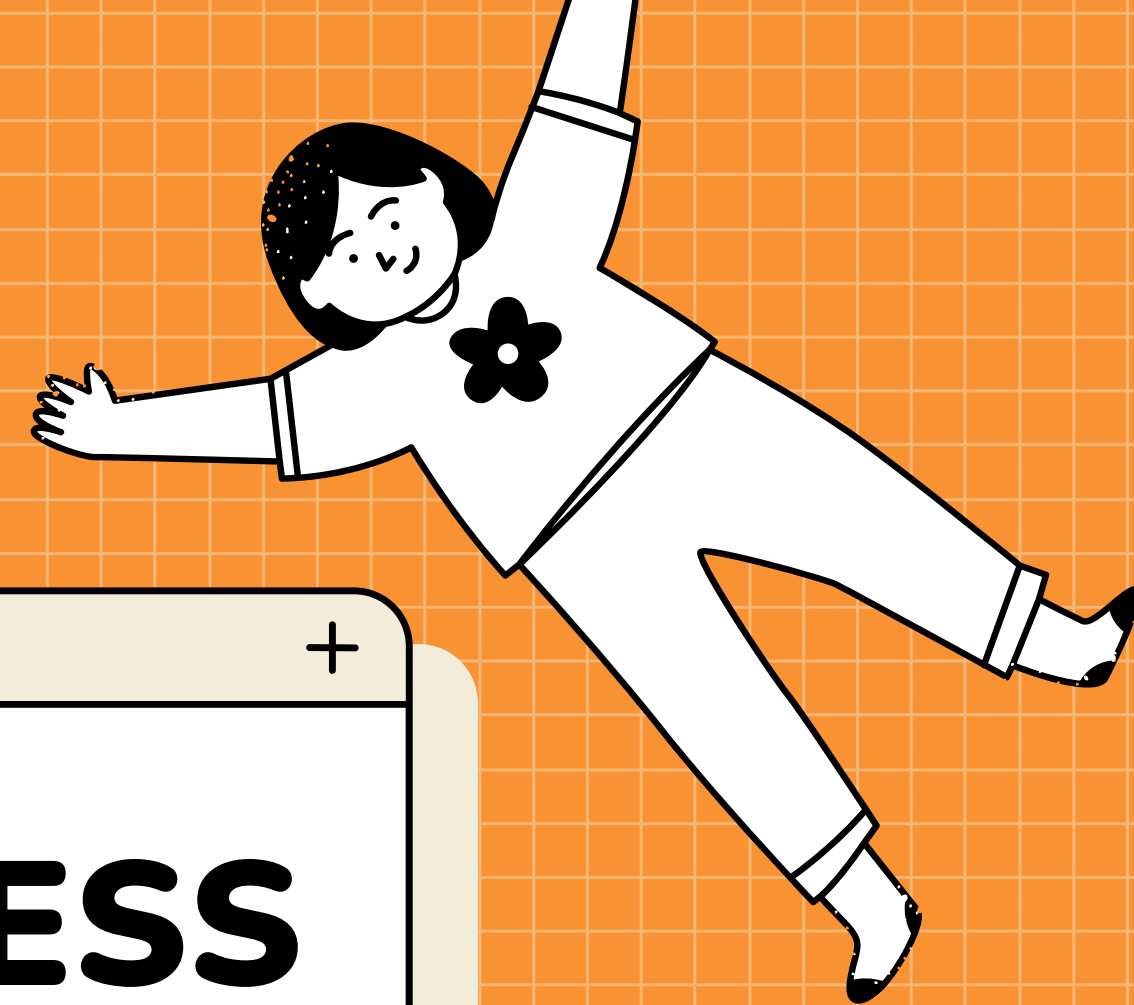
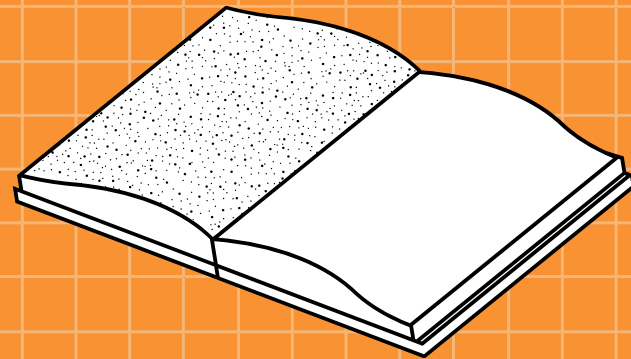
**July 1,
2022**

Spring Term 2023



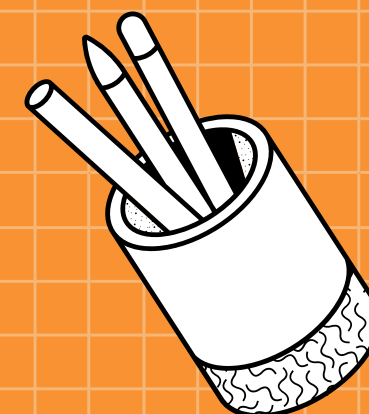
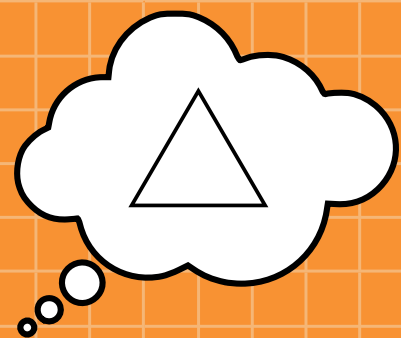
**Dec. 1,
2022**





APPLICATION PROCESS

Juniors & Seniors





STEP 1: COLLEGE-LEVEL PLACEMENT IN READING

1. Standardized Test Scores

ACT:

- Reading Score of 21+

OR

- English Score of 18+

For **MCA** & **SAT** requirements, please visit the Testing Center website.

2. High School GPA

Cumulative GPA of 2.6+

3. Appeal

Reading Course Placement Form

Math is Optional

- ACT Math Score of 22+
- OR
- Cumulative GPA 2.8+ and high school algebra 2 with C- or better



STEP 2: OPTION A

Students are only required to meet of the items listed in Option A

- **Class Rank**
 - Juniors - Top 3rd of class
 - Seniors - Top half of class
- **Decile**
 - Juniors - 3rd decile or higher
 - Seniors - 5th decile or higher
- **GPA**
 - Juniors - 3.0 or higher
 - Seniors - 2.5 or higher [cumulative]



STEP 2: OPTION B

Nationally Standardized Norm-Referenced Test
ACT, SAT, PSAT & PRE-ACT only

- Juniors - At or above the 70th percentile
- Seniors - At or above the 50th percentile



STEP 2: OPTION C

Appeal Process

This is for students who do not meet Option A or B

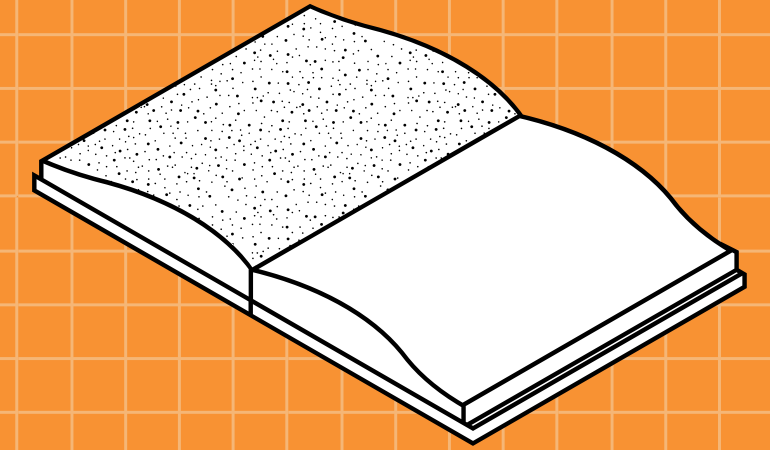
- Letter of recommendation from a high school counselor or teacher.
- Written essay on why the student will benefit from PSEO & what can the student contribute to Century College as a PSEO student.
- Submission of materials does not guarantee admission to the PSEO program.
- Decisions regarding this option are made according to a point system.
 - Letter of recommendation
 - Rigor of transcripts
 - Progressive Improvement
 - Essay
 - GPA



ALL STUDENTS MUST SUBMIT

- Notice of Student Registration Form (NOSR)
- High School Transcript





**Online
Only!**

Complete the online
general application

Complete the
**PSEO Applications
Submission eForm**

Once Accepted to PSEO

- Students will receive an acceptance notification via email.
- **ALL** PSEO students are **required** to go through the PSEO Orientation process.
 - Orientation information is available in April for Fall Semester and late-October for Spring Semester.
- **Step 1:** Complete Online PSEO Orientation
- **Step 2:** Register for classes and/or schedule an appointment with your Academic Advisor



**Please watch the start date
as they are not the same as
high school!**

Fall Semester start:
Monday, August 22, 2022



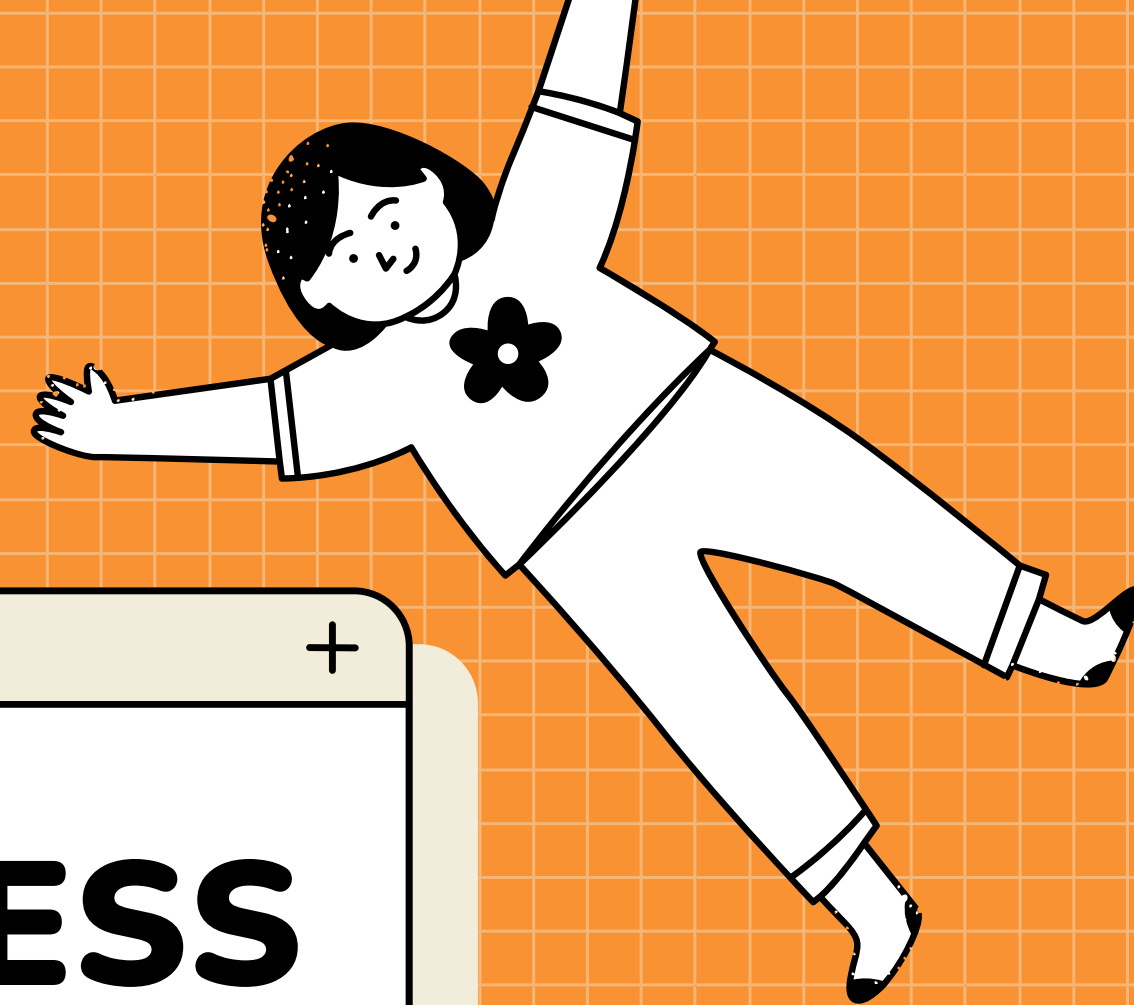
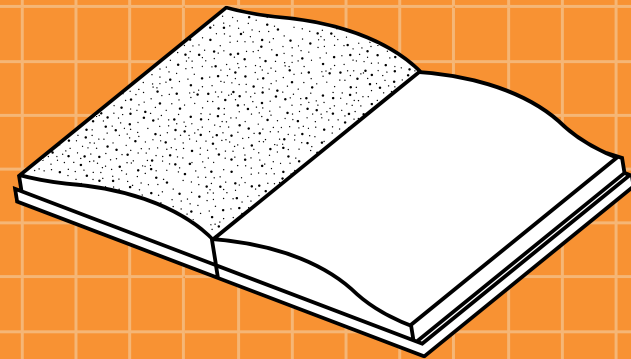
COURSE AVAILABILITY

- General education courses (MnTC Course List)
- Most technical courses
 - **Exceptions:**
 - **Special Application programs**
 - Dental Assistant, Dental Hygiene, Paramedic Science, Paramedic Fire Science, Nursing, Orthotics & Prosthetics and Radiologic Technology
 - However, students may take the **pre-requisite** courses to these programs and apply to the program once the student graduates from high school.



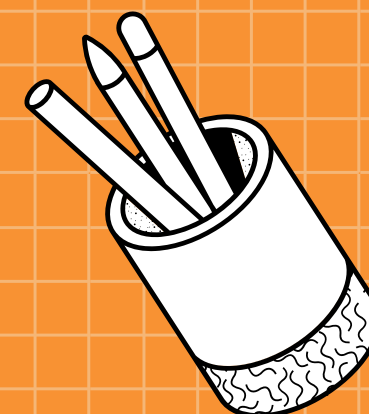
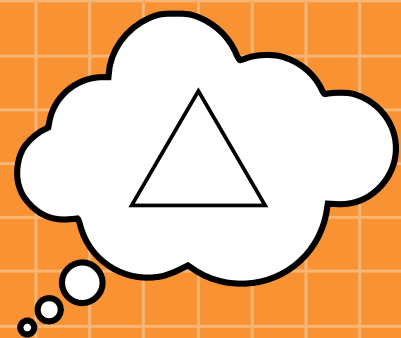
COURSE AVAILABILITY

- Not eligible for Private Music courses.
- Not eligible for any developmental courses.
- Not eligible for any courses taking place off campus.
 - Includes all Certified Nursing Assistant (CNA) courses
- Please review the "**Restricted Courses for PSEO**" list on our website.



APPLICATION PROCESS

Sophomores





ADMISSIONS INFORMATION

- Designed to introduce students to career & technical education courses.
- Must have achieved proficient score on 8th Grade MCA Reading Section (850 or higher)
 - Can substitute other methods to demonstrate College-Level Reading placement.
- Complete the online application.
- Submit documentation via the **PSEO Application Materials Submission eForm.**



COURSE AVAILABILITY

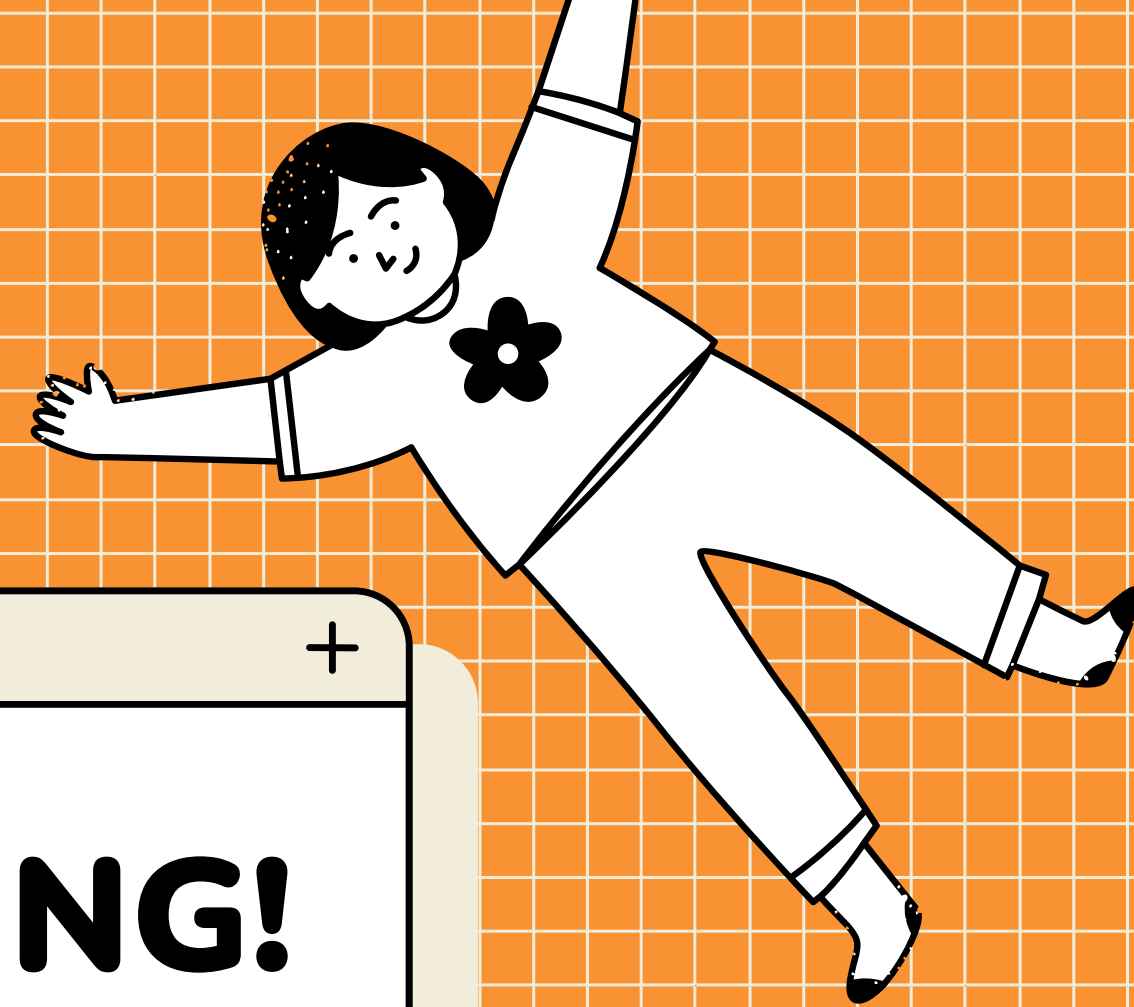
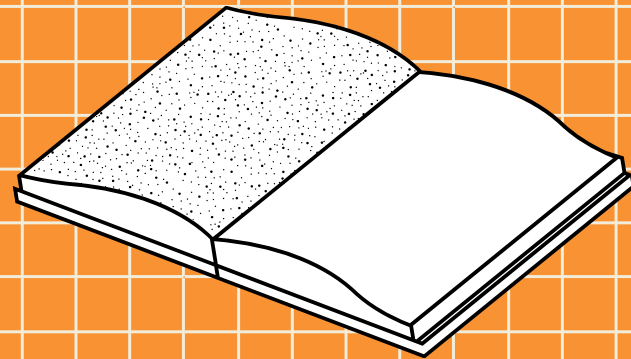
- 10th graders must select classes from the "**Approved Courses for 10th Grade PSEO**" list.
- May take one course first semester, if grade of C or higher is achieved, may take additional courses next semester.
 - Course selection at that point is not limited to the 10th Grade Course List.

Must reapply to 11th & 12th Grade PSEO



MAKING THE FINAL DECISION

- Your high school counselor is a huge asset in your decision process!
- Review the negatives & positives with your parents/guardians and your counselor.
- Make sure that all high school requirements are going to be met.



THANK YOU FOR JOINING!

We hope to see you at Century College!
Contact us at pseo@century.edu.

