

# College for All

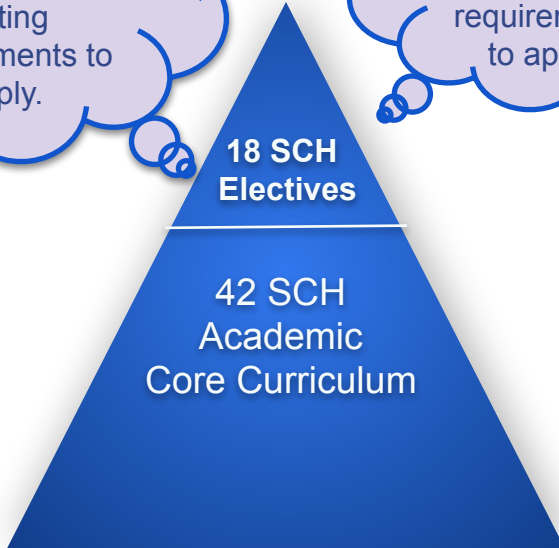
Garland ISD



# COLLEGE DEGREES IN HIGH SCHOOL

## Collegiate Academy

Students must meet minimum testing requirements to apply.



**Associate of Arts (AA)**  
**Associate of Science (AS)**

## Early College HS

No testing or grade requirements to apply.

## P-TECH

### Associate of Applied Science (AAS)



# P-TECH Programs



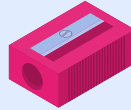
Garland

Engineering  
Manufacturing



Lakeview

Criminal Justice  
Business/Accounting



Naaman Forest

Construction  
Mortgage Banking



North Garland

Pre-Med/Pre-Dental  
Networking



Rowlett

Gaming  
Software Development



Sachse

Multimedia Web Design  
Teaching



South Garland

Automotive  
Mechanics  
Teaching

# ECHS Programs

Rowlett and South Garland

## Collegiate Programs

Lakeview and Naaman Forest

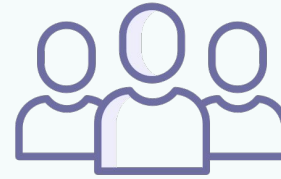
## New ECHS Programs for 21-22

North Garland

Garland

Sachse

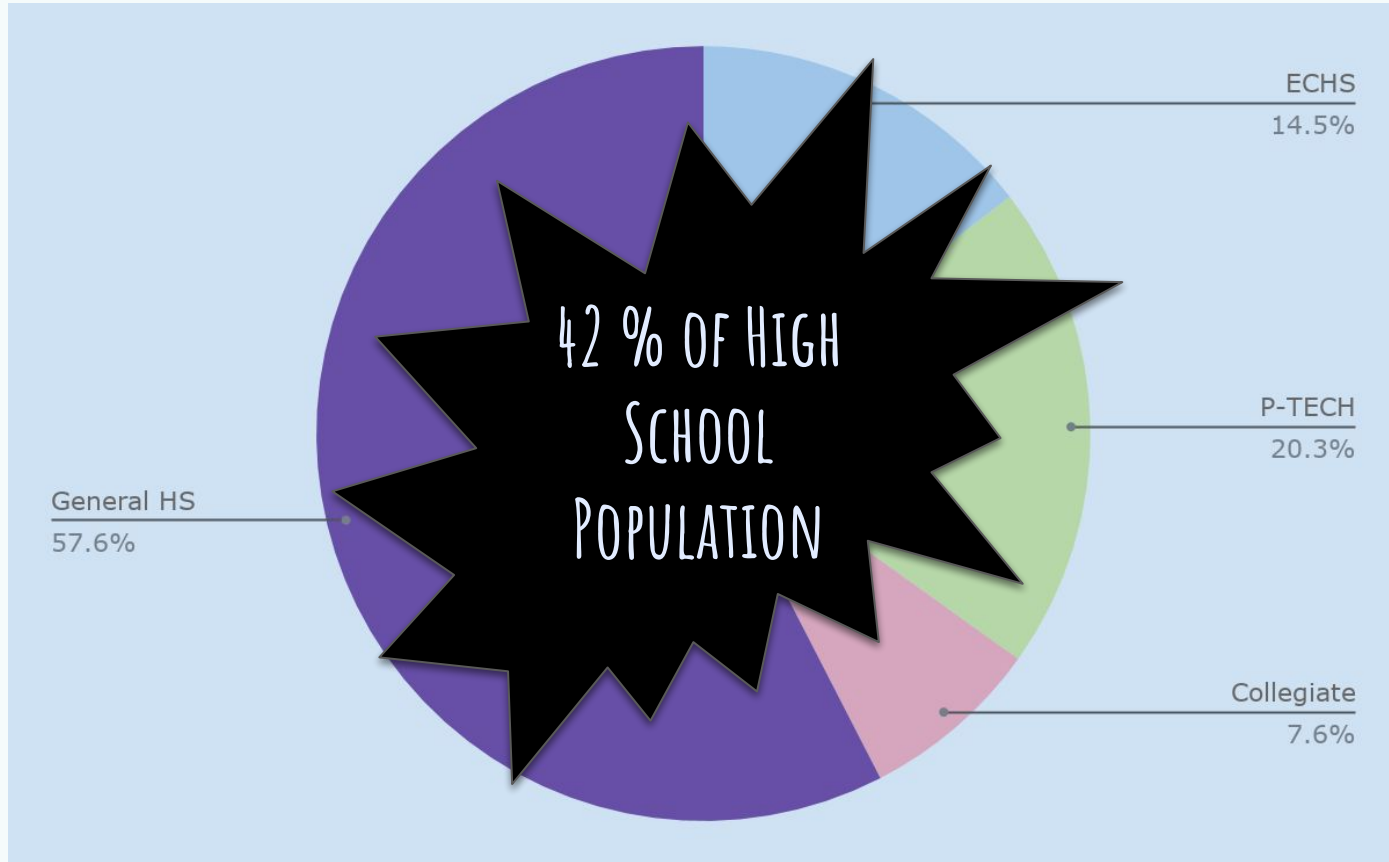
# 20-21 Enrollment



P-TECH	9th	10th
Garland	36	
Lakeview	116	
Naaman Forest	42	
North Garland	125	
Rowlett	77	119
South Garland	55	
Sachse	128	
<b>Total:</b>	<b>579</b>	<b>119</b>

Collegiate/ ECHS	9th	10th
Lakeview	125	118
Naaman Forest	126	117
Rowlett	77	
South Garland	118	135
<b>Total:</b>	<b>446</b>	<b>370</b>

# 2024-2025 Enrollment Projection



# Key Differences of ECHS/P-TECH and Traditional Dual Credit

- Small school environment (500 students per program)
- Accelerated instruction
- Student support
- Students begin taking college classes in 9th grade
- Structured sequence of courses leading to an associates degree
- Students spend the entire day on the college campus during the Senior year

# Target Population

- At risk students
- Students who are underrepresented in college
  - First generation college goers
  - Economically disadvantaged students
  - English language learners





# Student Support

- AVID
- Summer acceleration program
- Academic support/Intervention
- Accelerated curriculum
- Social emotional support
- Parent involvement
- Community involvement



# Leadership

## High School Assistant Principal = Early College Principal

- Support teachers with accelerated learning
- Assist parents in supporting their high-school aged college student
- Attend district and campus level steering committee meetings, site team meetings with the IHE and TEA-required meetings.
- Supervise students when they transition to the Dallas College campus junior or senior year

# Year 1 Data and Outcomes

2019-2020



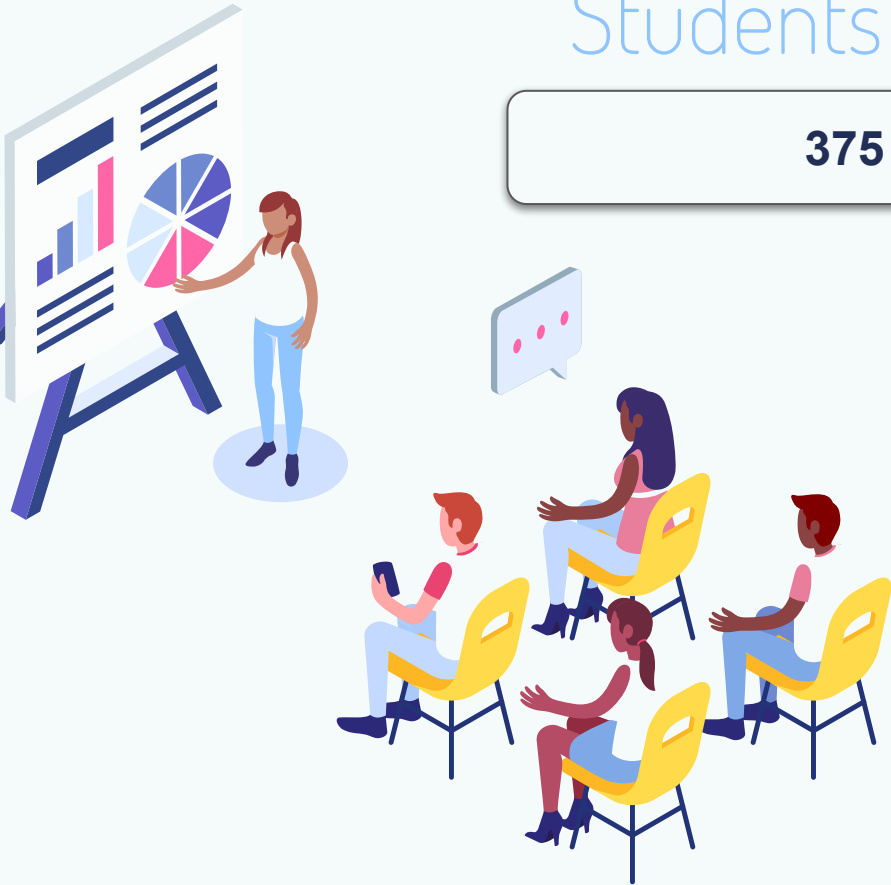
# Students Enrolled for 2019-2020

**375 Early College Students**

**22% At Risk**

**69% Economically  
Disadvantaged**

**15% English  
Learners**



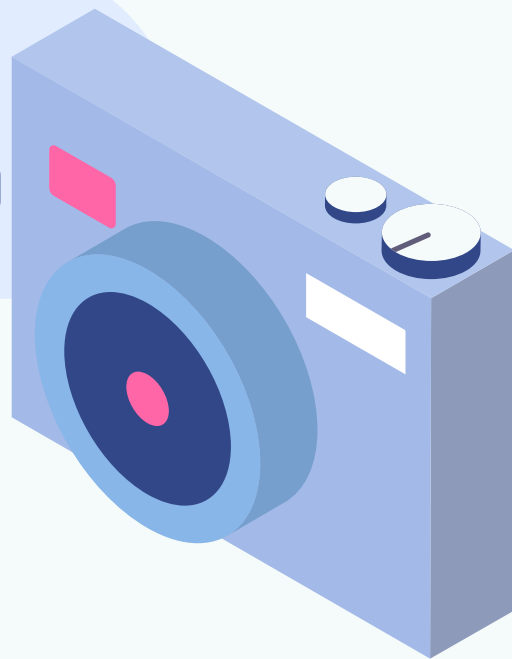
# Texas Success Initiative Assessment (TSIA) Snapshot

Percent of Early College Cohort 1  
who are TSI met in  
WRITING

94%

72%

Percent of Early College Cohort 1  
who are TSI met in  
READING





GISD Students Earned 1,613  
College Credits in 19-20  
P-TECH/ECHS programs

# 60 Hours of College Credit

Dallas College	University of Texas	Baylor University	GISD ECHS/P-TECH
\$4,740	\$24,000	\$89,000	FREE





THANKS  
Questions?

