



County of Albemarle and Albemarle County Public Schools

Lambs Lane Campus Master Plan

Public Meeting

February 15, 2022

First Thing's First



You have a beautiful site with abundant natural resources - our team seeks to help ACPS intensify its use in a sustainable way while also enhancing its beauty.



This is *your* unique plan, not ours.



Our professional recommendations will be based on analysis, experience, and creativity.



You have a collection of buildings - let's make it a campus!



Who we are



Lisa Walker

Project Manager
ACPS



Helen Dunn

Legislative & Public Affairs Officer
ACPS



John Chadwick

Principal in Charge / Client Leader
DLR Group



Camilo Llorens Bearman

AIA, LEED AP BD+C
Project Planner/Designer
DLR Group



Kwame Bailey

Community Engagement Specialist
DLR Group

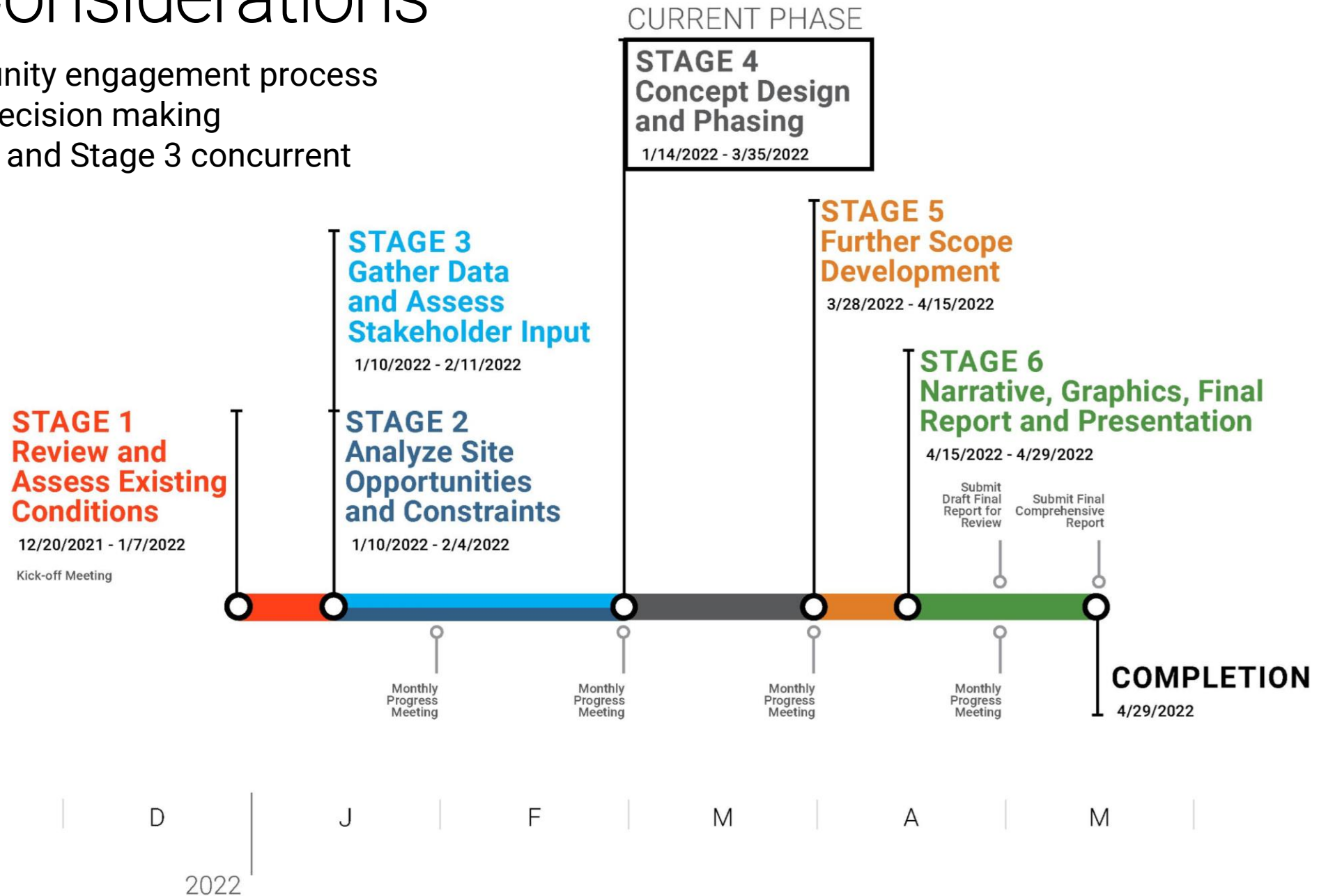


May L. Sein Win

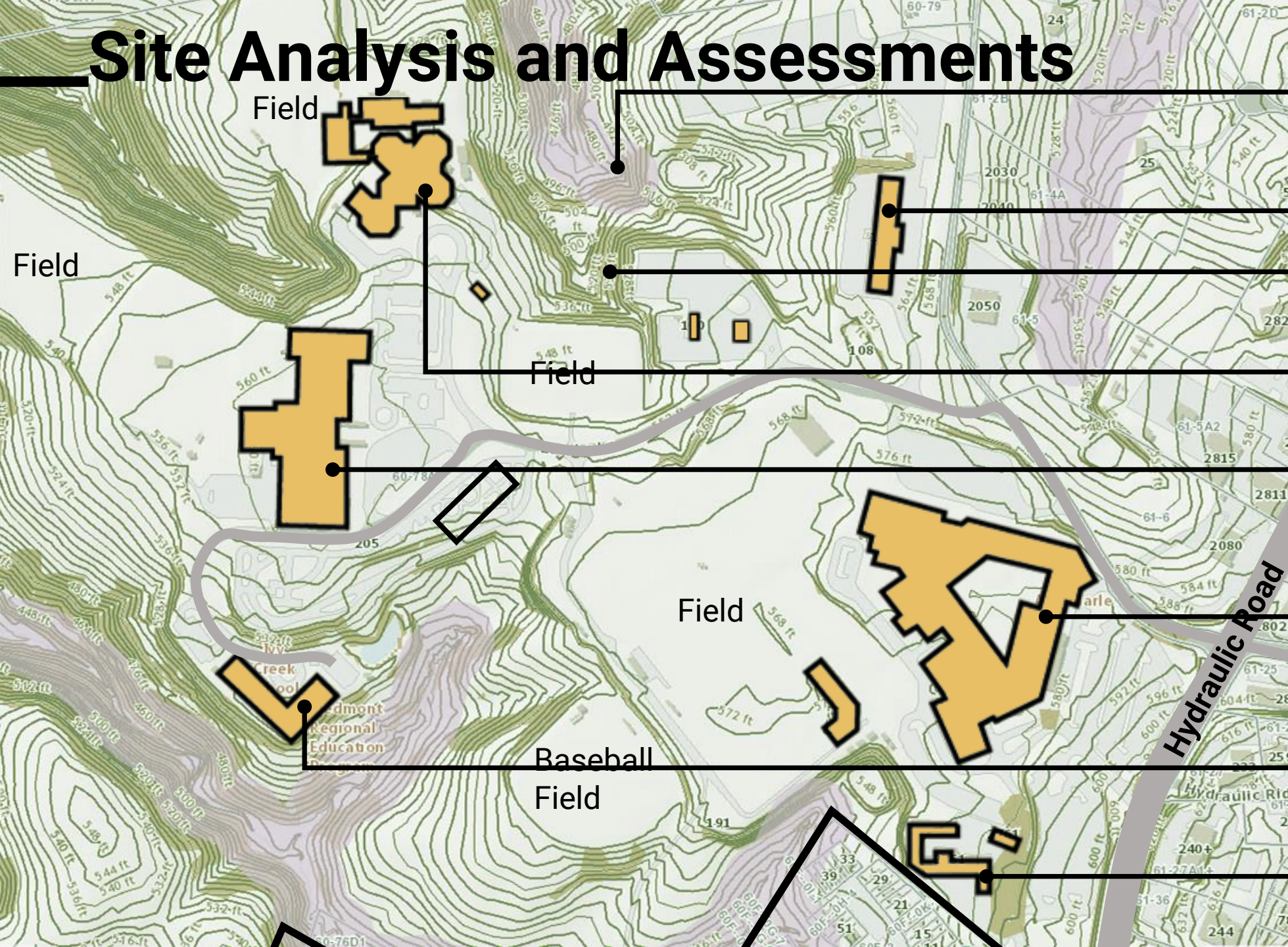
AIA
Project Manager
DLR Group

Key Considerations

- Community engagement process
- ACPS decision making
- Stage 2 and Stage 3 concurrent



Site Analysis and Assessments



Water protection

Transportation Center

Critical slopes

Mary Carr Greer Elementary School

Jack Jouett Middle School

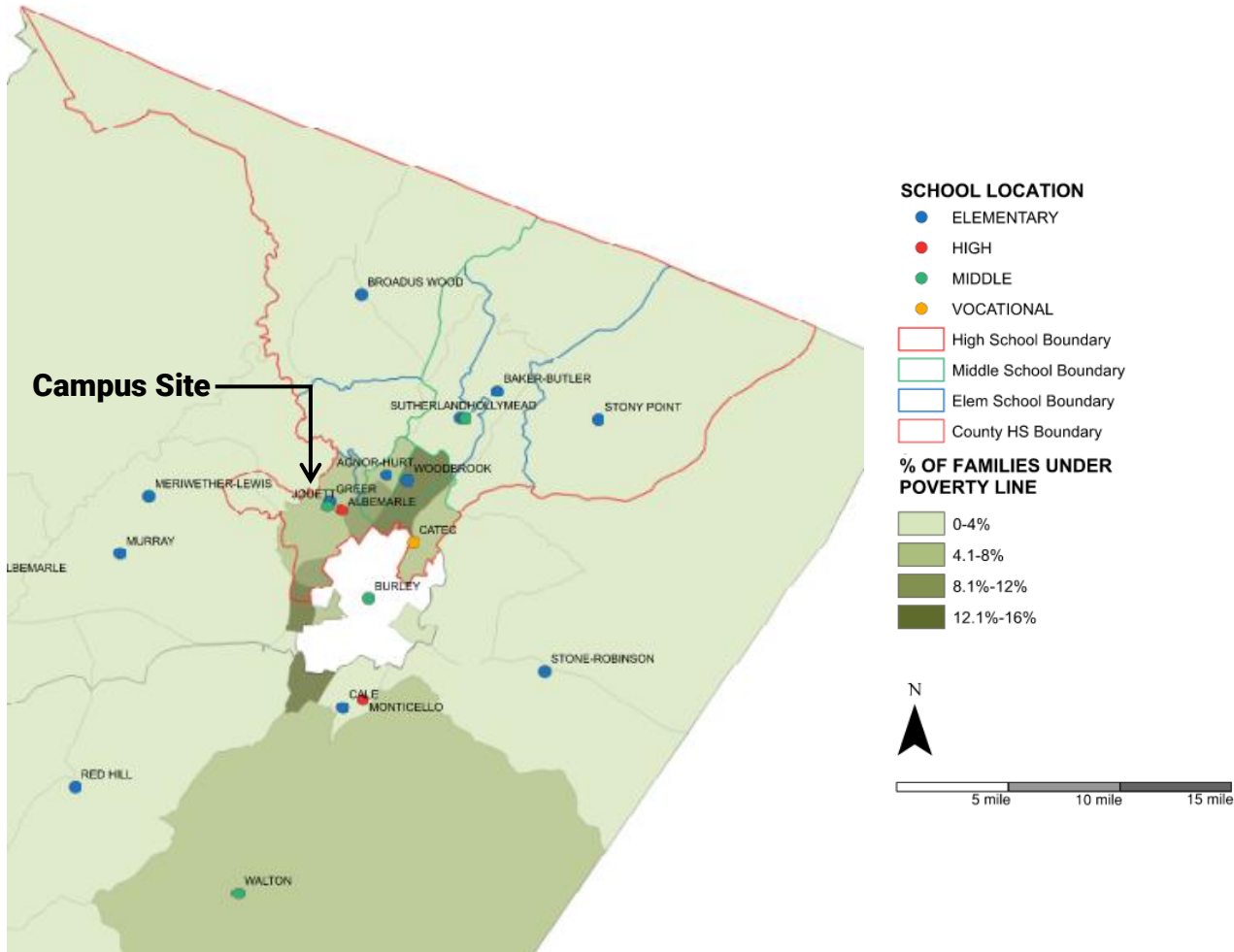
Albemarle High School

Ivy Creek School

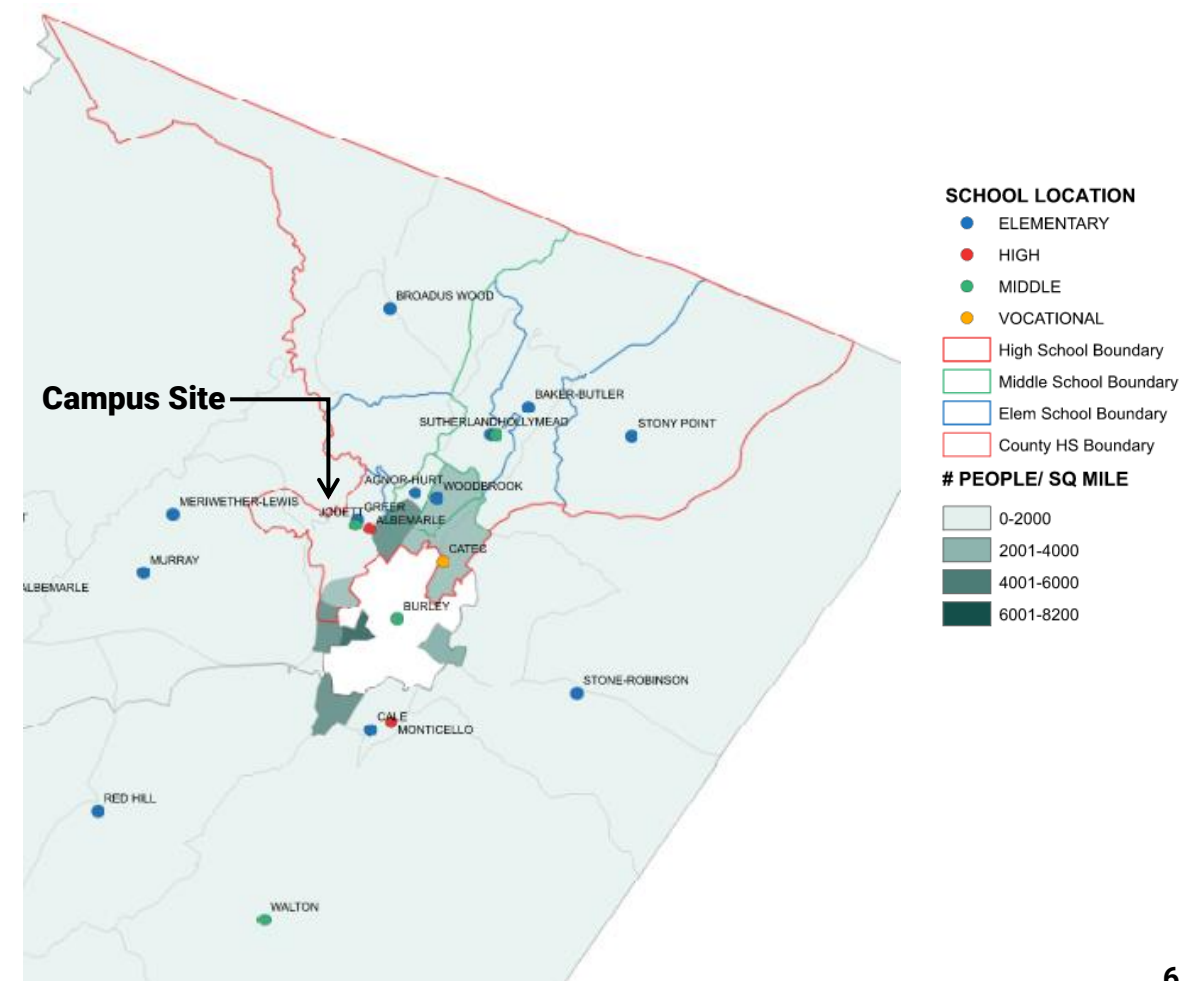
Building Services

GIS Data Analysis

**Exhibit 1
Percentage of Families Under Poverty**



**Exhibit 2
Population per Square Mile**



Social Determinants of Health – CDC



Whom We've Talked To



Schools

Albemarle High School

Jack Jouett Middle School

Mary Carr Greer Elementary School

Albemarle County Public Schools



Community

School Board Representative

Kate Acuff

Board of Supervisors Representatives

Diantha McKeel

Long Range Planning Commission

Albemarle Planning Commission

Boys and Girls Club



County Gov

Transportation Department

Facilities and Environmental Services

Economic Development

Legislative & Public Affairs

Community Education Department

ESOL, World Languages & Homeschool

Climate Protection Program



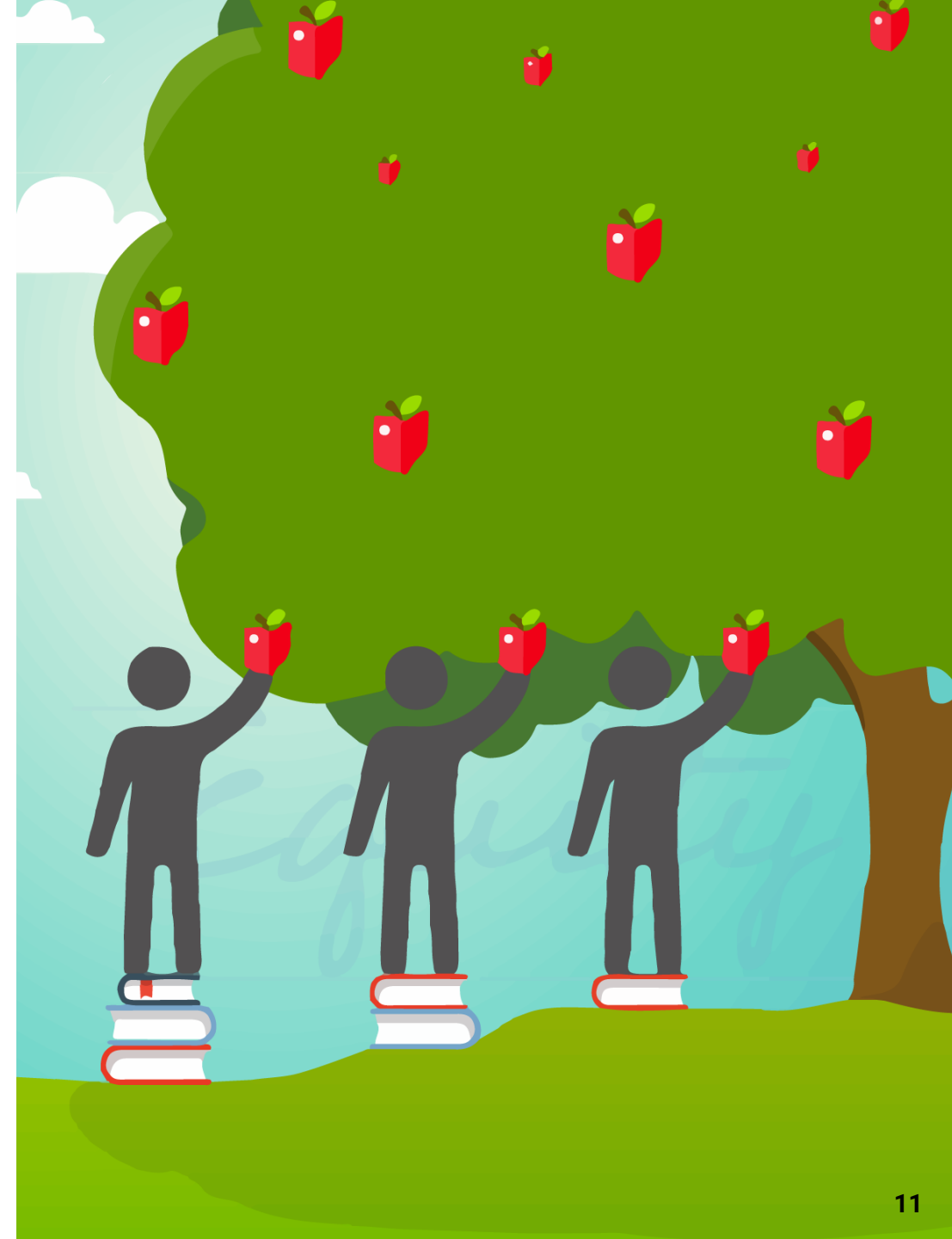
What We've Learned



Equity

How can the campus serve the diversity of people who use it more equitably and inclusively?

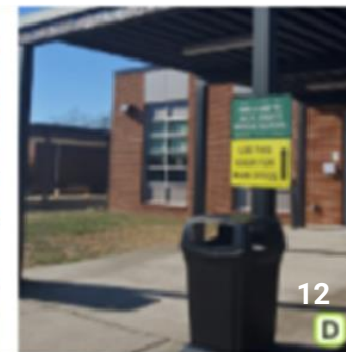
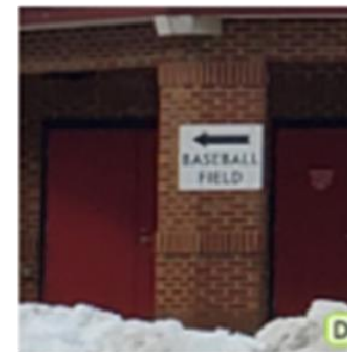
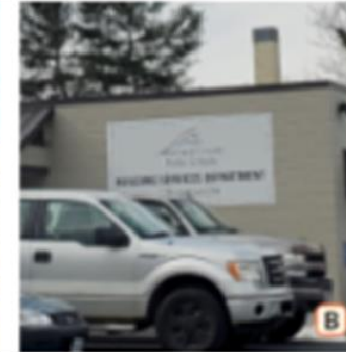
- Campus is centrally located within the County and serves the most densely populated, diverse and underprivileged population.
- Families with greatest needs in County are served by this campus and many of them live close to it.
- Access to campus is heavily reliant on school buses and personally owned vehicles, and therefore challenging for those that do not have access to them
- Access between schools on campus is also challenging and vehicle focused



Wayfinding

How do people find their way around the campus?

- Roads do not lead to their destination intuitively which causes a much confusion for those not familiar with the campus
- Signage to and within the campus is confusing and has never been coordinated between schools and facilities.
- Coordinated signage will facilitate wayfinding and campus identity.
- Trail heads should be more prominently and intuitively located.



Safety

How can people feel safer and more secure on the campus?

- A second entrance/exit to the campus is urgently needed
- Adding a second entrance/exit should not rely on relocation or removal of any existing buildings if possible
- Albemarle HS has many exterior doors and concealed spaces that are hard to monitor exits because of lack of personnel and school layout
- Bus loops serving Greer and Jouett are severely congested and conflict with parent drop-off and pick-up.



Environment

How can the campus be used and maintained more sustainably and responsibly?

- How can we highlight the trail network on the site and improve it?
- Currently, there is a lot of use by the students and selective community groups (mountain biking) but outside of that, the trails are not used much by the community. How can we change that?



Use

What uses should be added to or removed from the campus?

- Find a site for Center III
- A welcome center for new families would be valuable. For example, there is no centralized location for new students to be vaccinated and gave their health checks and the ESOL office is currently in a public library and small
- An aquatics/wellness center and a performing arts center have been suggested



Place

How can the campus be transformed from a collection of buildings into a campus that gives the people who use it a strong sense of place and belonging?

- This is the main ACPS campus
- How can it be reinforced as such?
- How can it present ACPS and the County as welcoming and inviting?
- How can we create a sense of entry and center?



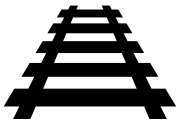
Circling Back



You have a beautiful site with abundant natural resources - our team seeks to help ACPS intensify its use in a sustainable way while also enhancing its beauty.



This is *your* unique plan, not ours.



Our professional recommendations will be based on analysis, experience, and creativity.

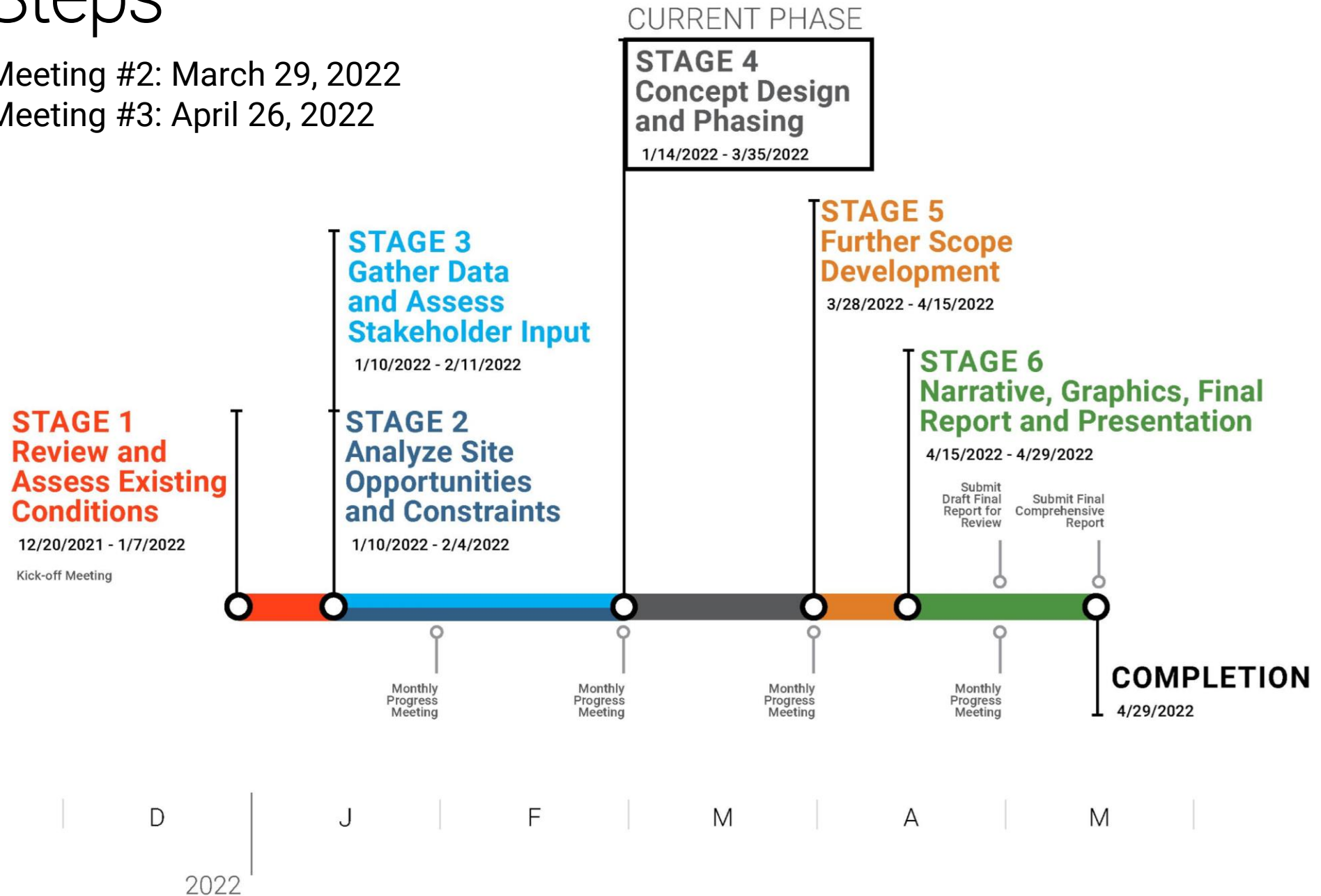


You have a collection of buildings - let's make it a campus!



Next Steps

- Public Meeting #2: March 29, 2022
- Public Meeting #3: April 26, 2022



Feedback?

Thank you!

 **DLR Group**

Architecture Engineering Planning Interiors