



# HALL MEMORIAL LIBRARY



93 MAIN STREET, ELLINGTON, CT 06029

860-870-3160

[HALLMLIB@ELLINGTON-CT.GOV](mailto:HALLMLIB@ELLINGTON-CT.GOV)

## LIBRARY HOURS

Monday-Thursday 10am-8pm

Friday - Saturday 10am-5pm

Sunday 1pm-5pm

**Closed Feb. 21 for Presidents Day**

**And when the weather outside is frightful...**

Check the Library website and Facebook page for info

Closings also posted on WFSB TV

## February 2022 Newsletter

### TAKE YOUR CHILD TO THE LIBRARY DAY

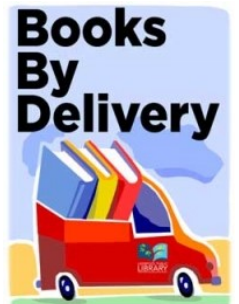


Take Your Child to the Library Day will be celebrated Saturday, February 5. We look forward to children of all ages dropping into the library to pick up some of their favorite books and other materials. Did you know that we

have board games and puzzles that you can check out to enjoy at home? Did you know that we have Playaway Launchpads filled with games for kids ages 3-10?? And while you're here... pick up a Grab-N-Go Craft to take home and enjoy. Everyone who checks out materials at the Children's Desk, upstairs, will receive a special book bag of their own. We really want you to visit!! Come in and enjoy!

### HOMEBOUND SERVICES

The Hall Memorial Library is pleased to offer home delivery services to our patrons who are unable to come to the Library due to temporary illness/situation or permanent disability. To apply for Homebound Services, fill out the application found on the website or call Sue at 860-870-3160.



### CURBSIDE PICKUP

For those patrons who are able to come to the library but then are unable to come into the building due to infirmity or the current Covid 19 concerns, we continue to offer curbside delivery of library materials. To request materials, use the online catalog, email to [hallmlib@ellington-ct.gov](mailto:hallmlib@ellington-ct.gov) or call us at 860-870-3160. After receiving notification that your materials are ready, come to the library, call when you arrive and a staff member will bring your items out to your vehicle.

### JIGSAW PUZZLES—THE MISSING PIECE FOR YOUR WINTER DAY

Did you know that the Library has a collection of jigsaw puzzles? The perfect activity for these cold winter days. Many great new donations were just added, bringing your choices to over 200 at all levels.

**We**  **Our Library**



**All Feb. Long!**

### GREAT COURSES NOW AVAILABLE

Thanks to some wonderful donations the Library now has a fledgling collection of "Great Courses" titles in DVD and audiobook. If you have some that you no longer need please consider donating them to add to the collection. The Great Courses is a series of over 800 college-level audio and video courses on a variety of subjects. Come in and check them out. They are also available digitally on Hoopla and OverDrive.

### INCOME TAX PREPARATION MATERIALS ARE HERE

Federal 1040 forms and Instruction booklets are now available along with a variety of schedules and supplementary forms. The State Dept. of Revenue Services will no longer be providing printed forms to libraries. We will print and provide you with forms for free. Copies of the instructions may be viewed in the Library in print or online. To obtain a full printed set of forms and instructions, you may call the DRS at 860-297-5962.

Please visit the HML Calendar, [www.library.ellington-ct.gov](http://www.library.ellington-ct.gov), for all program details and registrations. Questions may be directed to 860 870 3160. All Zoom links will be emailed upon registration.

## FAMILIES



**Learn To Play the Dulcimer with Carolyn Brodgerski**  
**Wednesday, Feb. 22 at 6:30pm**  
**Upstairs Room**

Registration is required. Limited instruments available.

## TEENS



**Teen Advisory Board Kickoff Meeting**  
**Thursday, Feb. 17 at 4pm**  
**In person & Zoom**

## PROGRAMS FROM OUR PARTNERS

HML partners with other libraries and organizations to “share the wealth” of programming.

**The Connecticut Historical Society offers:**

**Online Book Club**  
**Wednesday, Feb. 2 at 2pm**

**Online Lunch and Learn**  
**Tuesday, Feb. 15 at 12pm**



## CHILDREN



**Read to the Dogs**  
**Sat. Feb. 12 & 26 at 10:30am**  
**Children’s Room**

Registration and masks required.



**SJU Winterfest Crafternoon**  
**Sat. Feb. 26 at 12-3pm**  
**Upstairs Room**

Join Ellington SJU for drop in crafts and fun for kids of ALL AGES!



**Chess Ninjas**  
**Tuesdays, 4:30-6:00pm**  
**Upstairs Room**



**Preschool Story Hours**  
**Tuesdays Feb. 8-Apr. 5 at 10:30am**

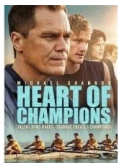
**Children’s Program Room**  
Children 3-5. Masks and registration required.

**Time for Twos**

**Wednesdays Feb. 9-Apr. 6 at 10:30am**  
**Children’s Program Room**

Children 2-3. Registration required.

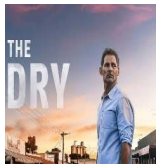
## ADULTS



**Movie Day: Heart of Champions**  
**Wednesday, Feb. 2 at 6:30pm**  
**Thursday, Feb. 3 at 1pm**  
**Upstairs Room**



**HML Book Discussion – “Havisham” by Richard Frame**  
**Wednesday, Feb. 16 at 7pm**  
**McKnight Room**



**Movie Day: The Dry**  
**Wednesday, Feb. 16 at 6:30pm**  
**Thursday, Feb. 17 at 1pm**  
**Upstairs Room**



**Knit and Natter Handcraft Group**  
**Tuesdays, 10am**  
**McKnight Room**

**Felted Wool Mushroom with Angelina Fleury**  
**Tuesday, Feb. 15 at 6pm**  
**Upstairs Room**

All materials will be provided. Registration is required. There will be a \$5 non-refundable materials fee for this class, payable within 5 days of registration.

**Ellington Human Services Office Hours with Elderly Outreach Social Worker Rebecca Stack**  
**Third Wednesday of every month (Feb. 16) at 10am – 1pm**  
**McKnight Room**



**Veterans Coffeehouse**  
**Third Thursday of every month (Feb. 17) at 10:30am, McKnight Room**



**Writers’ Workshop Group**  
**Tuesday, Feb. 15 at 6:30pm**  
**Children’s Program Room**

