



BURY

GRAMMAR SCHOOL
AGE 3-18



THE COURTHOUSE

INTRODUCING OUR NEW ACADEMIC
CENTRE FOR SIXTH FORM

SIXTH FORM

CONTENTS

- 3 THE DIAMOND MODEL
- 4 THE COURTHOUSE
- 6 BRIDGE ROAD
- 7 HISTORY OF THE COURTHOUSE
- 8 A POSITIVE CHANGE FOR ALL
- 10 BENEFITS
- 12 FAQs
- 14 THE FUTURE

QUALITY FIRST

We believe that quality and high standards are the keys to our students' success and happiness.

The Courthouse will offer our sixth formers unrivalled facilities and a superb environment in which to complete their Bury Grammar School education.

The best schools evolve with the times and Bury Grammar School is keen to lead the way as a school with both a rich history and a modern outlook.

We are confident that the developments outlined here will lead to enhanced student experiences, opportunities and possibilities.

We are delighted to share our plans with you and look forward to working alongside BGS sixth formers and families as our most senior pupils reach the apex of their careers at Bury Grammar School.

Exciting times lie ahead.

Mrs Jo Anderson

Principal



Primary will become an all-through experience from Kindergarten to Juniors in a co-educational setting where pupils grow and learn together at a formative age. This means pupils no longer change schools at age seven and is followed by automatic transition into our Senior Schools.



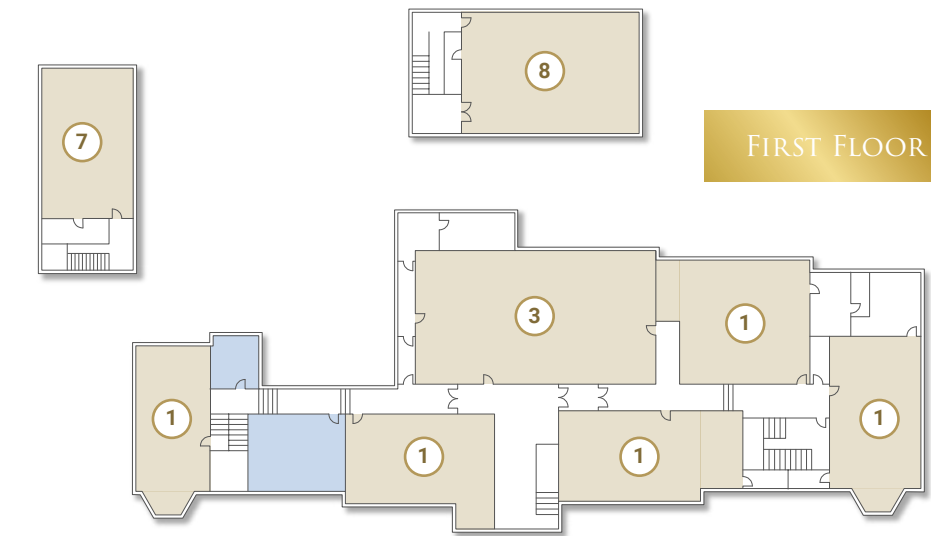
INTRODUCING THE COURTHOUSE

Bury Grammar School is delighted to announce the opening of The Courthouse – our new Academic Centre for Sixth Form within this historic and beautiful building – from January 2023.

The Courthouse becomes a dedicated area for Sixth Form lessons, giving sixth formers their own specialist academic centre for the very first time.

This space represents a number of other 'firsts' too and facilities our sixth formers have never before enjoyed:

- ◆ The Court Room – our very first Sixth Form Hall
- ◆ The Sixth Form Board Room
- ◆ The Sixth Form Careers and Higher Education Library
- ◆ The Sixth Form Arts Centre
- ◆ A suite of Faculty Tutorial Rooms.



MAIN BUILDING

- ① Faculty Tutorial Room
- ② Careers and Higher Education Library
- ③ Sixth Form Hall
- ④ Sixth Form Board Room
- ⑤ Meeting Room
- ⑥ Sixth Form WC
- Offices and Staff Areas

ARTS CENTRE

- ⑦ The Gallery @ BGS
- ⑧ Drama and Theatre
- ⑨ Music Technology
- ⑩ Music



BRIDGE ROAD

Sixth formers will continue to enjoy the Sixth Form Centre on Bridge Road as their social and study base. This, along with The Courthouse, gives our most senior students access to unprecedented facilities.

THE HISTORY OF THE COURTHOUSE

This historic building played a significant role in the borough of Bury as the former Magistrates' Court House. It still retains the original cells in the lower floors which are currently used as music practice rooms (the old cell doors have been removed!) and the architecture evokes the atmosphere and history of our town.

In 1993, Bury Grammar School purchased the building and it became the home of our Boys Juniors. We are proud that it is about to move into a new stage in its history.

BGS sixth formers study a wide range of subjects – from Sciences to Modern Languages and Creative subjects to Humanities – with Social Sciences being the choice of many of our students. It seems apt that a building which has heard so many life stories will be the academic centre for the lawyers, politicians, economists, social scientists and business leaders of the future.

The hall in which trials once took place will also provide a fabulous venue, full of character, for debates and public speaking competitions.

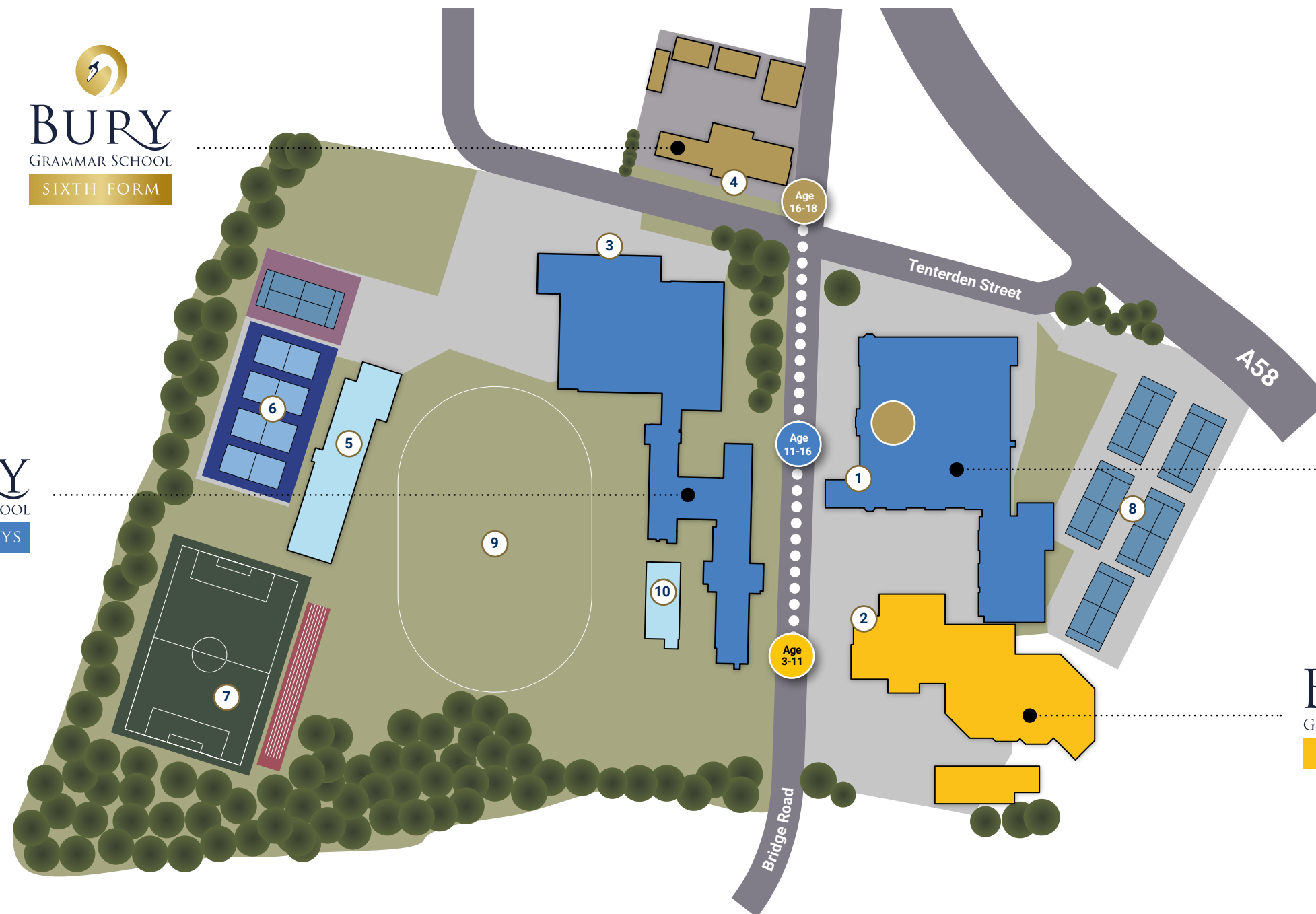
The Sixth Form Prefect Team will no doubt enjoy planning school events from their new base.



A POSITIVE CHANGE

What does this mean for the whole school?

- ♦ All Senior School pupils can look forward to studying in The Courthouse one day;
- ♦ A significant investment in Senior School classrooms is planned as rooms are liberated by sixth formers;
- ♦ It is possible that new study areas will become available for Year 11s within Senior School;
- ♦ Senior School pupils will have access to more outdoor areas;
- ♦ This development allows Senior School to continue to grow. There has been a 25% growth in the last 5 years.



KEY

- 1 Senior Girls' Reception
- 2 Primary Reception
- 3 Senior Boys' Reception
- 4 The Courthouse Reception
- 5 Sports Hall
- 6 Multi Use Games Area
- 7 3G Pitch and Sprint Track
- 8 Netball Courts
- 9 Running Track and Cricket Pitch
- 10 Swimming Pool
- Sixth Form Centre – Sixth Form social and study base

BENEFITS

WHAT THE COURTHOUSE FACILITIES MEAN FOR SIXTH FORMERS

The addition of The Courthouse is an exciting milestone in the development of our School and will further improve the experiences of our sixth formers. Students will benefit from:

- ♦ A university style environment independent of Senior School
- ♦ Academic and tutorial spaces entirely dedicated to A Level teaching
- ♦ An academic base for each Sixth Form Faculty as part of the suite of Tutorial Rooms
- ♦ Seminars conducted in specialist facilities
- ♦ The Court Room (Courthouse Hall) – a new venue for careers lectures, UCAS presentations, Prize Giving, assemblies, debates and talks from visiting speakers
- ♦ The Sixth Form Library and Careers Centre – a central focus point as sixth formers prepare for the next stage of their education and careers
- ♦ Tutorial bases for every Sixth Form Tutor Group.

As well as:

- ♦ The Sixth Form Board Room – the centre for Prefect Meetings and the Leadership Team
- ♦ Key senior staff on hand to offer advice, guidance and their academic expertise
- ♦ The Arts Centre – music and drama facilities next door to our art gallery.
- ♦ Academic hubs independent of the main Senior Schools but within a couple of minutes' reach when prefecting responsibilities call our most senior students to their all-important positions as role models for younger pupils.

FAQs

HOW HAS THIS BUILDING BECOME AVAILABLE?

Bury's former Courthouse has been, up until 2022, the home of our Boys Juniors. Following the creation of our new Primary Division in their new facilities on Bridge Road, our Governors decided to dedicate this beautiful building to being an Academic Centre for our Sixth Form.

You can read more about our new primary facilities in the *Primary Division* brochure.

WILL SIXTH FORMERS STILL BE USING THE SIXTH FORM CENTRE ON BRIDGE ROAD?

Yes- this will remain our sixth formers' social and study base and the location of common rooms, study rooms and the Sixth Form Café. (There are no classrooms of course in the current Sixth Form Centre on Bridge Road.)

SO WHERE DO SIXTH FORMERS HAVE THEIR LESSONS AT THE MOMENT?

In classrooms all around the Senior Schools.

WILL SIXTH FORMERS BE TRAVELLING AROUND THE SITE MORE THEN?

No, not necessarily. At the moment, sixth formers leave their Sixth Form Centre when the bell rings to go to lessons in classrooms across the two Senior School sites; from January 2023, the same principle will apply but the destination will be The Courthouse.

DOES THIS MEAN TEACHERS AND SUPPORT STAFF MOVING AROUND THE SITE MORE?

No. A significant advantage for teachers – and therefore ultimately also for pupils – is that Sixth Form faculties will have their own academic base. Sixth Form support staff will also have their own bases in The Courthouse.

WILL THIS DEVELOPMENT SUPPORT ACADEMIC STANDARDS?

Yes. It is always good for faculties to be able to work closely together sharing good practice and we believe our students will relish having their own base with a university feel.

WE KNOW THAT SIXTH FORMERS PLAY A KEY ROLE THROUGHOUT THE SCHOOL AS ROLE MODELS, MENTORS AND PREFECTS. WILL THEY STILL BE INVOLVED IN THE WHOLE LIFE OF THE SCHOOL?

Yes, very much so – this is an important aspect of BGS life we are very keen to preserve.

Sixth formers will continue to:

- ♦ Play an important role as prefects with a high profile in Senior School
- ♦ Lead and attend whole school assemblies
- ♦ Be a presence around school as monitors at break and lunch times
- ♦ Meet with younger pupils and mentors
- ♦ Have certain lessons in Senior School.

DO YOU THINK PARENTS WILL SUPPORT THIS DEVELOPMENT?

We hope so, yes. It is hard to see how giving pupils more facilities and investing further in their education could be anything other than positive.

The parent survey conducted earlier this year gave us a very clear steer on a number of matters. The survey told us that:

- ♦ Parents would like us primarily to invest in (1) teaching facilities and resources, and (2) recruitment and retention of staff
- ♦ This development represents a significant investment in facilities and will, we believe, be popular with staff
- ♦ BGS parents' top five priorities in education are (1) quality of teaching, (2) atmosphere, (3) facilities, (4) class sizes and (5) academic results.

The Courthouse supports all of these priorities.

WILL THE STAFF TEAM GROW AS A CONSEQUENCE?

Yes. We have appointed an Assistant Head of Sixth Form to join the Head and Deputy Head of Sixth Form, thereby strengthening support for our students still further.



THE FUTURE

We have a number of plans to invest in your child's education at BGS over the coming decade.

FURTHER ESTATE DEVELOPMENTS

We envisage upgrading the outside of the Boys' Senior School building and re-purposing some classrooms in the Girls' Senior School building. Senior School pupils will have greater access to more specialist facilities on the Senior School sites as sixth formers move into The Courthouse for their academic lessons.

DIGITAL STRATEGY

BGS has led the way with its rapid roll out of Microsoft Surfaces and the installation of Clevertouch boards into every classroom. We intend to continue to be at the forefront of digital developments.

ENVIRONMENTAL IMPACT

As an eco-school, we are already committed to making environmentally respectful decisions and will be launching our eco-strategy soon.

SOCIETAL IMPACT

Education changes lives and BGS intends to grasp the opportunity to aid social mobility to an even greater extent than we do already through extending our bursary scheme and partnerships with other schools.

ACADEMIC AND PASTORAL EXPERTISE

BGS is known for its high academic standards and outstanding pastoral care. Post pandemic, we intend to be leading the way in both these areas and making the most of the opportunity to support the much talked about renaissance in education.

ALUMNI AND CAREERS

Our alumni enjoy a fabulous array of impressive careers and we are keen to build on our partnerships with them to support and advise

the teenagers of today as they look to the future. We all need a role model and mentor!

COMMUNITY PARTNERSHIPS

We are very proud of our partnerships with local dignitaries, businesses, charities, schools, sports groups and cultural groups. Our Partnerships and Arts & Culture initiatives will be growing in number and ambition.

FUTURE GROWTH

We believe that it is possible BGS continues to grow in size as a consequence of these and other developments. But growth is not the driving force: offering even better experiences to our pupils is, as ever, our key motivation.

BURY GRAMMAR SCHOOL IS PROUD TO BE BUILDING
STRONG FOUNDATIONS FOR THE FUTURE





INTRODUCING OUR ENHANCED DIAMOND STRUCTURE