



# Facilities and Bond Projects Update

February 8, 2022

Presented by: CJ Knowland, Director, Facilities, Maintenance, Operations, and Transportation



## Districtwide Playground Replacements

- ▶ All playgrounds Districtwide have been replaced!
  - ▶ 11 playgrounds constructed using bond funds.
- ▶ Lee ES playground is complete and open to students!
- ▶ Los Alamitos ES upper playground is complete and open to students!
- ▶ Los Alamitos ES kinder playground is complete and open to students!
- ▶ Weaver ES is complete and open to students!



# Los Alamitos High School – Multistory STEM Building

## Current Status



- ▶ Current Construction Activities:
  - ▶ Exterior Enclosure – Metal Wall Panels, Brick Veneer, Curtain Wall, Glazing
  - ▶ Interior – Insulation, Drywall
  - ▶ Main electrical switchgear scheduled to arrive by the end of January.
  - ▶ Rooftop HVAC units scheduled to arrive by the end of January.
  - ▶ Elevator installation to begin in February.
  - ▶ Grand Staircase forming, rebar, and concrete are in progress.
- ▶ The Science Department has requested to enlarge the counter space of the island casework located in the chemistry classrooms.
- ▶ The site administration has requested to modify one of the exterior facing first floor classrooms to become an attendance office with a transaction window.
- ▶ The robotics and engineering lab staff have requested modifications to accommodate desktop computers in the robotics lab.

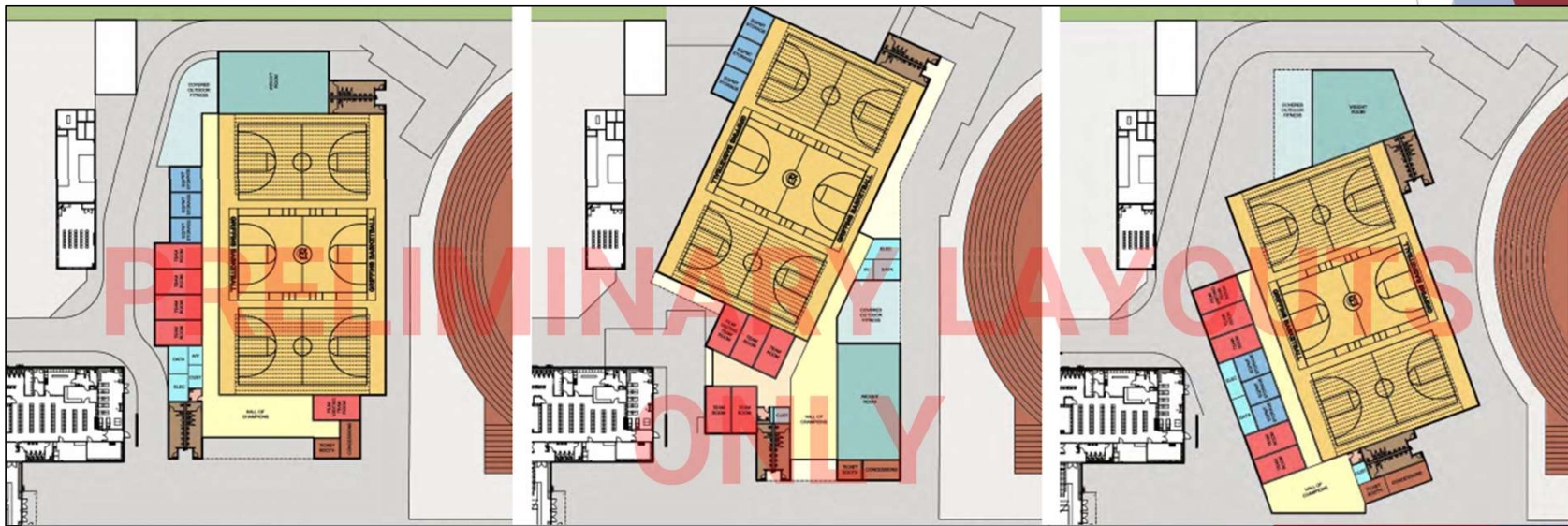
# Los Alamitos High School – Multistory STEM Building Progress Photos



# Los Alamitos High School – Second Gymnasium Current Status

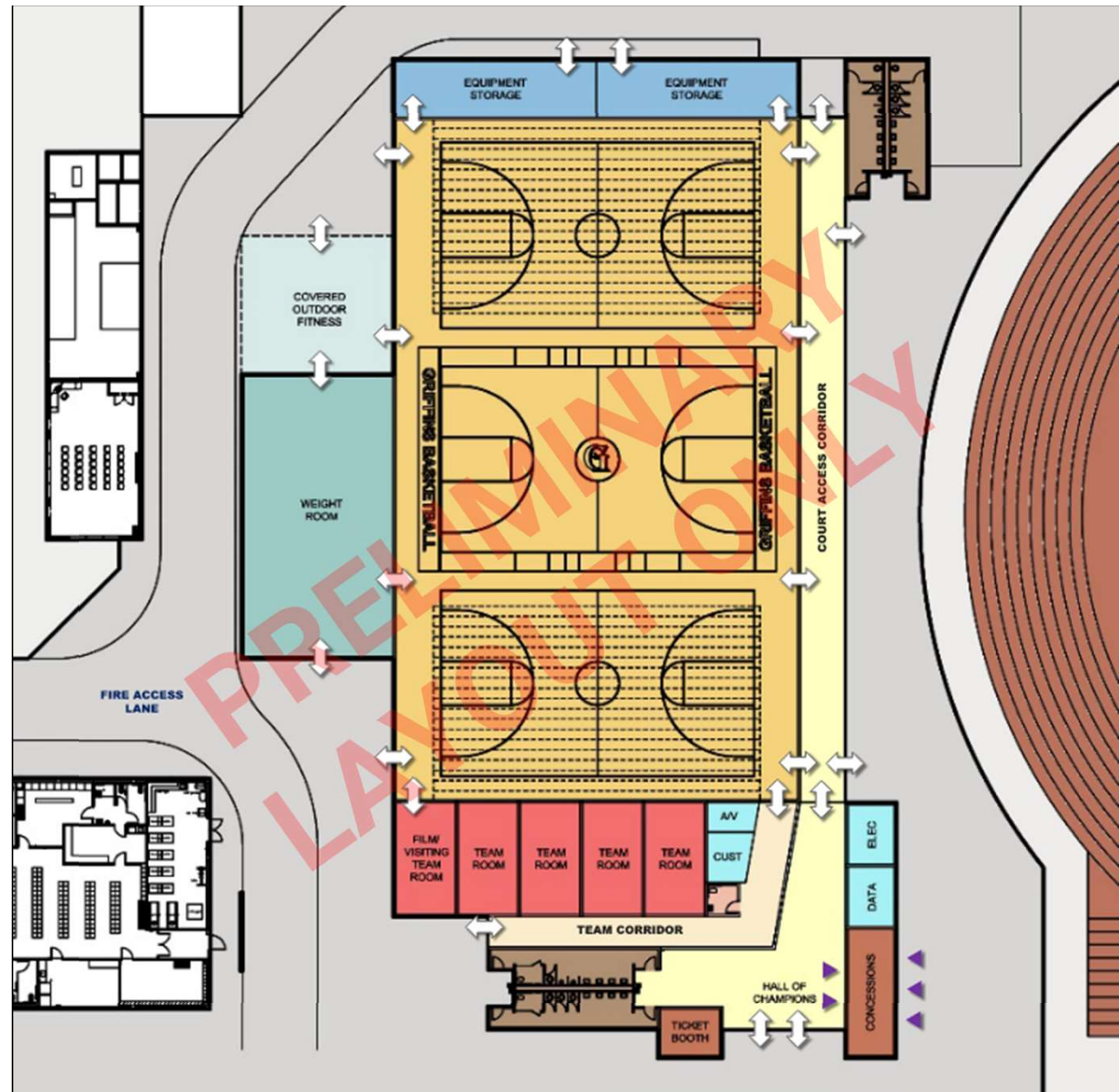


- ▶ Schematic Design is nearing completion!
  - ▶ We have met with all user groups, and we have collected their input in terms of needs, wants, and overall functionality of the second gymnasium.
  - ▶ The Design Firm, Westgroup Designs, is consulting with a third-party estimating consultant to develop the first design estimate for the new gymnasium.



# Los Alamitos High School – Second Gymnasium Current Floorplan

- ▶ Design Considerations:
  - ▶ New Weight Room with Outdoor Fitness Area
  - ▶ (2) sets of Restrooms with interior and exterior access
  - ▶ Interior Corridor for access to Basketball Courts
  - ▶ Team Rooms with separate Team Corridor
  - ▶ Ticket Booth and Concession Area with interior and exterior serviceability
  - ▶ Equipment Storage with interior and exterior accessibility



# Districtwide – Solar Program

- ▶ DSA Plan Approvals
  - ▶ Weaver ES
  - ▶ Hopkinson ES
  - ▶ McAuliffe ES
- ▶ Construction schedules are currently being negotiated with our Solar Contractor.
  - ▶ The Solar Contractor would like to break ground as early as mid March 2022.
  - ▶ The typical construction duration for most of our sites, with exception to the High School, is 90 to 100 calendar days.
  - ▶ The consecutive project start dates would lag approximately 14 days behind the previous projects start date. As such, solar construction would be ongoing at 6 to 7 sites concurrently during the peak of construction.





Questions?



Comments?

*Thank you!*