



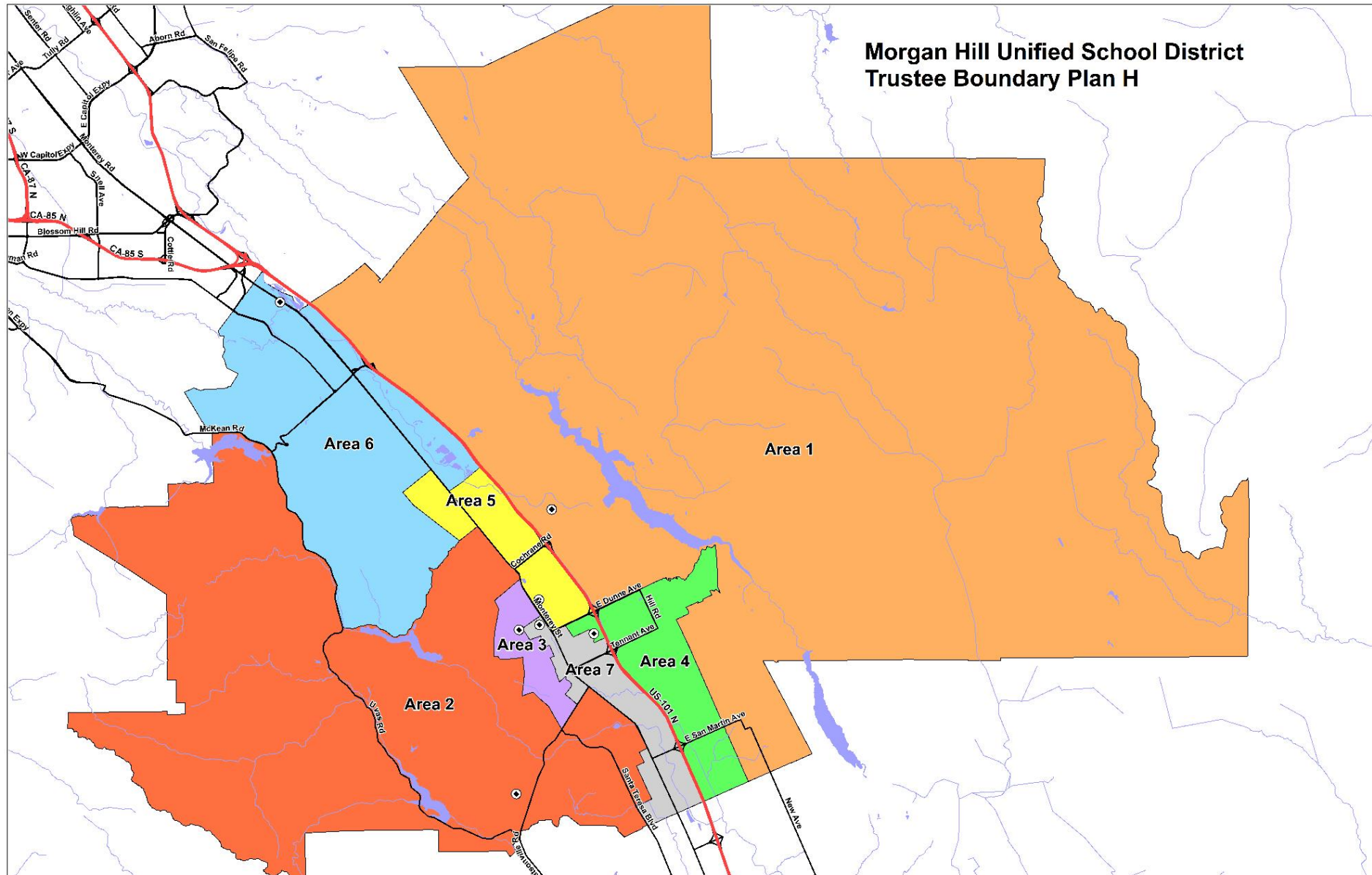
# Trustee Boundary Map H

## Morgan Hill Unified School District

Presented by Ken Reynolds  
President, SchoolWorks, Inc.

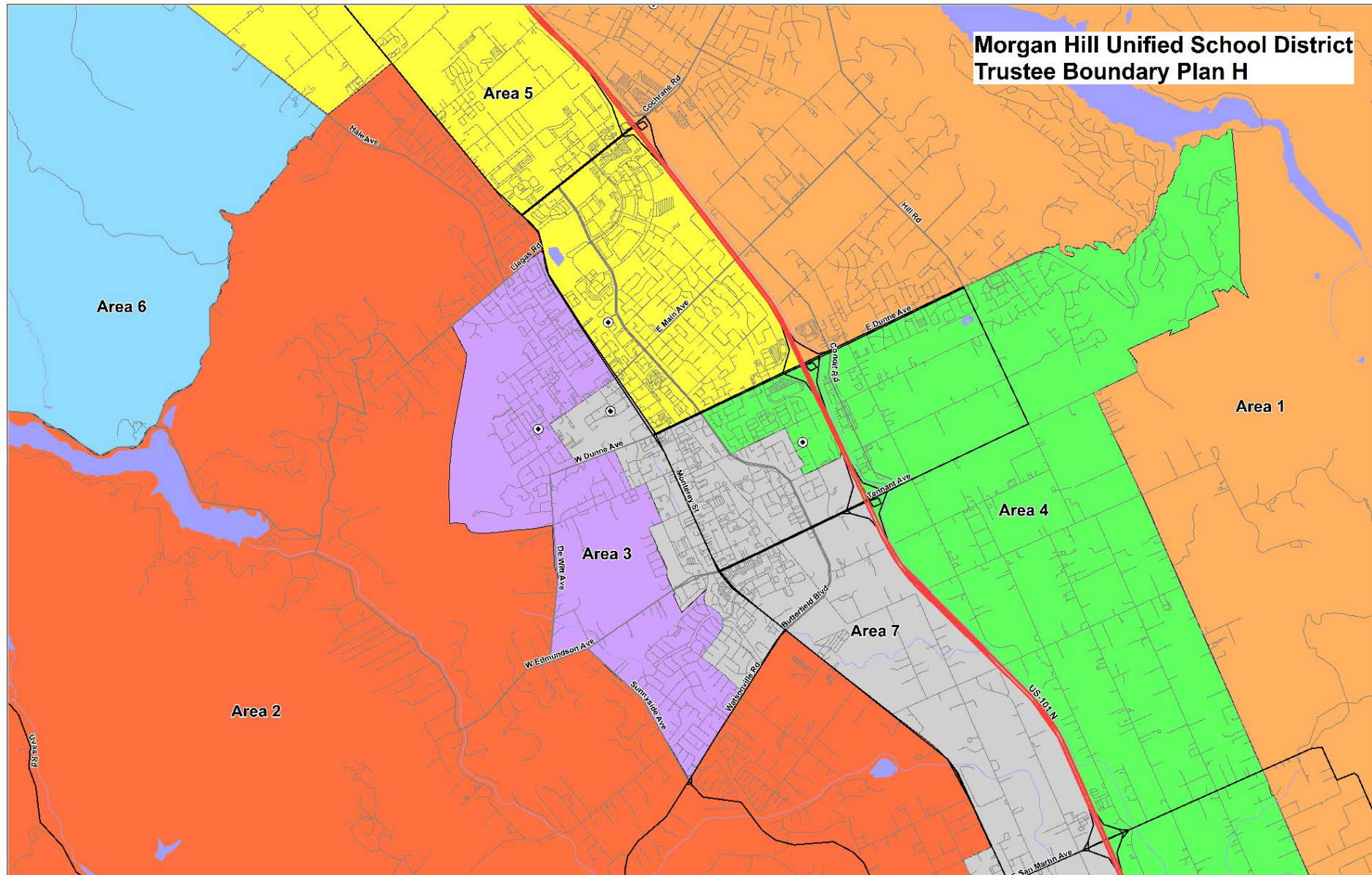


# Trustee Area Boundary Map H

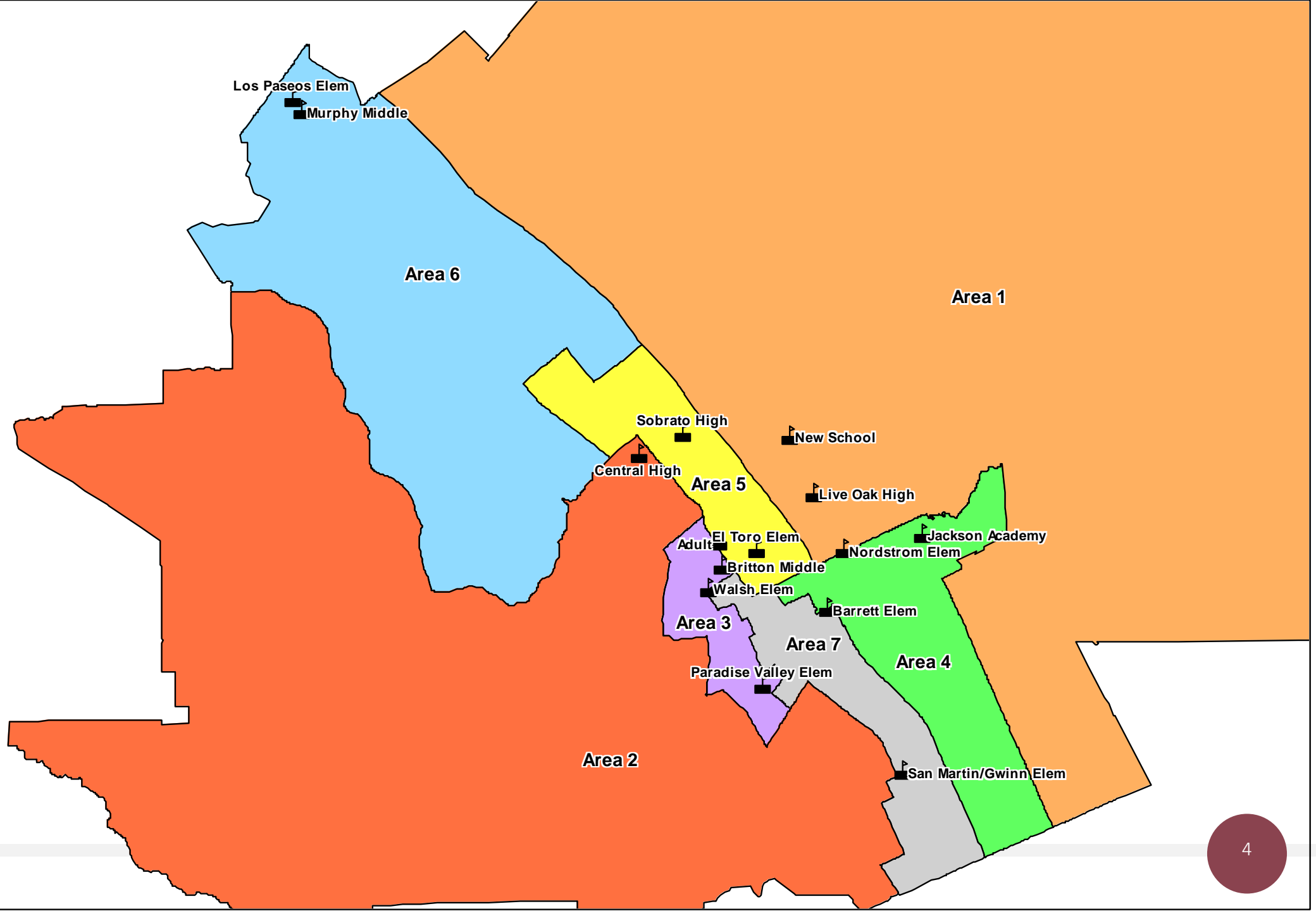




# Trustee Area Boundary Map H (Detail)



# Trustee Areas and Schools - Map H



# Map H – School Representation

Each of the Trustee Areas have the following schools located in the boundary:

- |   |     |
|---|-----|
| 1) Nordstrom, Live Oak High               | (2) |
| 2) Central High                           | (1) |
| 3) Paradise Valley, Walsh, Britton Middle | (3) |
| 4) Barrett, Jackson                       | (2) |
| 5) El Toro, Sobrato High, Adult Ed        | (3) |
| 6) Los Paseos, Murphy Middle              | (2) |
| 7) San Martin/Gwinn                       | (1) |

# Total Population and % Deviation, Map H

**Morgan Hill Unified School District  
Census 2020 Data Summary by Trustee Areas  
Plan H**

**Total Population Statistics**

Area:	1	2	3	4	5	6	7	Total
Trustees:	1	1	1	1	1	1	1	7
Population	10,080	9,805	9,563	9,595	9,347	9,550	9,872	<b>67,812</b>
% of Total Pop.	14.86%	14.46%	14.10%	14.15%	13.78%	14.08%	14.56%	
Ideal Pop.	9,687	9,687	9,687	9,687	9,687	9,687	9,687	
Ideal Pop. %	14.29%	14.29%	14.29%	14.29%	14.29%	14.29%	14.29%	
								<b><u>Peak</u></b>
Deviation	393	118	-124	-92	-340	-137	185	<b>733</b>
Dev %	4.05%	1.21%	-1.28%	-0.95%	-3.51%	-1.42%	1.91%	<b>7.57%</b>

Peak Deviation may not exceed 10%.

# Demographics by Trustee Area, Map H

Census Data by Trustee Area including Racial/Ethnic details  
Plan H

Area:	1	%	2	%	3	%	4	%	5	%	6	%	7	%	Total	%
Trustees:	1		1		1		1		1		1		1		7	
<b>Total Population</b>	<b>10,080</b>		<b>9,805</b>		<b>9,563</b>		<b>9,595</b>		<b>9,347</b>		<b>9,550</b>		<b>9,872</b>		<b>67,812</b>	
Hispanic	2,418	23.99%	2,293	23.39%	3,682	38.50%	3,288	34.27%	3,355	35.89%	2,728	28.57%	5,197	52.64%	22,961	33.86%
White - NH	5,085	50.45%	5,476	55.85%	4,213	44.06%	4,343	45.26%	3,805	40.71%	3,451	36.14%	2,958	29.96%	29,331	43.25%
Black - NH	190	1.88%	106	1.08%	118	1.23%	148	1.54%	212	2.27%	247	2.59%	249	2.52%	1,270	1.87%
American Indian - NH	15	0.15%	50	0.51%	19	0.20%	16	0.17%	31	0.33%	17	0.18%	26	0.26%	174	0.26%
Asian - NH	1,739	17.25%	1,221	12.45%	954	9.98%	1,185	12.35%	1,388	14.85%	2,426	25.40%	946	9.58%	9,859	14.54%
Pacific Islander - NH	32	0.32%	20	0.20%	30	0.31%	33	0.34%	46	0.49%	49	0.51%	30	0.30%	240	0.35%
Other - NH	71	0.70%	81	0.83%	55	0.58%	50	0.52%	47	0.50%	51	0.53%	50	0.51%	405	0.60%
Multiple Races - NH	530	5.26%	558	5.69%	492	5.14%	532	5.54%	463	4.95%	581	6.08%	416	4.21%	3,572	5.27%
<b>18+ Population</b>	<b>7,674</b>		<b>7,942</b>		<b>7,100</b>		<b>7,503</b>		<b>7,139</b>		<b>7,418</b>		<b>7,368</b>		<b>52,144</b>	
Hispanic	1,626	21.19%	1,671	21.04%	2,426	34.17%	2,354	31.37%	2,369	33.18%	1,904	25.67%	3,582	48.62%	15,932	30.55%
White - NH	4,099	53.41%	4,699	59.17%	3,406	47.97%	3,660	48.78%	3,129	43.83%	2,903	39.13%	2,447	33.21%	24,343	46.68%
Black - NH	160	2.08%	106	1.33%	103	1.45%	125	1.67%	163	2.28%	199	2.68%	190	2.58%	1,046	2.01%
American Indian - NH	10	0.13%	38	0.48%	15	0.21%	11	0.15%	24	0.34%	15	0.20%	26	0.35%	139	0.27%
Asian - NH	1,392	13.81%	1,005	10.25%	763	7.98%	958	9.98%	1,093	11.69%	1,977	20.70%	795	8.05%	7,983	11.77%
Pacific Islander - NH	24	0.31%	18	0.23%	20	0.28%	31	0.41%	36	0.50%	42	0.57%	20	0.27%	191	0.37%
Other - NH	47	0.61%	59	0.74%	45	0.63%	33	0.44%	32	0.45%	38	0.51%	38	0.52%	292	0.56%
Multiple Races - NH	316	4.12%	346	4.36%	322	4.54%	331	4.41%	293	4.10%	340	4.58%	270	3.66%	2,218	4.25%
<b>CVAP</b>	<b>6,995</b>		<b>7,426</b>		<b>5,940</b>		<b>6,963</b>		<b>6,038</b>		<b>6,802</b>		<b>5,396</b>		<b>45,560</b>	
Hispanic	1,632	23.33%	1,498	20.17%	1,538	25.89%	1,617	23.22%	1,781	29.50%	1,416	20.82%	2,064	38.25%	11,546	25.34%
White - NH	3,898	55.73%	4,616	62.16%	3,510	59.09%	4,180	60.03%	3,148	52.14%	3,387	49.79%	2,311	42.83%	25,050	54.98%
Black - NH	152	2.17%	129	1.74%	98	1.65%	93	1.34%	101	1.67%	100	1.47%	245	4.54%	918	2.01%
American Indian - NH	0	0.00%	0	0.00%	0	0.00%	5	0.07%	0	0.00%	0	0.00%	7	0.13%	12	0.03%
Asian - NH	1,007	14.40%	958	12.90%	587	9.88%	803	11.53%	785	13.00%	1,622	23.85%	573	10.62%	6,335	13.90%
Pacific Islander - NH	0	0.00%	11	0.15%	0	0.00%	0	0.00%	0	0.00%	5	0.07%	6	0.11%	22	0.05%
Multiple Races - NH	306	4.37%	214	2.88%	207	3.48%	265	3.81%	223	3.69%	272	4.00%	190	3.52%	1,677	3.68%

NH = Not of Hispanic Origin

CVAP = Citizen Voting Age Population