



Program Planning 2022-2023

Developing a schedule with your
families and school counselor

Planning for your future



Graduation Requirements

4 years English
(20 credits)

3 years Social
Studies (15 cr)

3 years Science
(15 cr)

3 years
Mathematics
(15 cr)

1 year World
Language (5
cr)

1 year Fine Art
or Performing
Art (5 cr)

1 year 21st
Century Life &
Careers (5 cr)

PE / Health
(each year in a
NJ high school)

½ year
Financial
literacy (2.5 cr)

Community
Service- Grade
10

PIRL- Class of
2025 +

Additional 17.5
credits of
Electives

**120 credits
total!**



GRADUATION REQUIREMENTS CONT.

- **NJGPA**
 - ELA
 - Math
- **Attendance**
 - Full - 18 days
 - Half year - 9 days



Other Course Options

- Princeton University
Classes (11th/12th)
- Mercer County Technical
Schools (11th/12th)
- Option II- See the athletic
department website
- Independent Study



Course Selection-PowerSchool

Use Parent Portal to make requests

When selecting courses:

- Look at Prerequisites on [Program of Study](#)
- Make sure you are eligible based on your grade level
- If recommendation is required - discuss with your teachers!

COURSE SELECTION PROCESS

- THE PORTAL IS NOW OPEN FOR YOU TO ENTER COURSE REQUESTS. ** Remember that these are requests, it is not your schedule!
- The Portal will be open until Feb. 11.
- Even if you're applying for Peer Group, Teen Pep, Mindful Mentors, Princeton University Courses, etc., please still enter a full schedule (8 periods).
 - Keep in mind which courses you would *drop* if you do get one of these placements.





COURSE SELECTION PROCESS

Only choose a course that you are eligible for based off your *current* mid-year grades.

Check to ensure you meet pre-requisite grades based off final grades.

If you are on the cusp of meeting a grade requirement, you can request an appeal form for Humanities and the sciences.

Example: You want to take AP Biology, but you had a B in Algebra II and a B in Biology Accelerated.

Enroll for a different science class but fill out the appeal form for AP Biology.

POWER SCHOOL SAMPLE

ENGLISH GRADE 12

Click the edit button to request a course ➡



English IV or AP English Literature is a 12th grade requirement.

Number of requests to generate : 1

SCIENCE GRADE 12

Click the edit button to request a course ➡

Please choose a course.

Number of requests to generate : 1

MATH GRADE 12

Click the edit button to request a course ➡

Please choose a course.

Number of requests to generate : 1

SOCIAL STUDIES GRADE 12

Click the edit button to request a course ➡

Please choose a course.

Number of requests to generate : 1

WORLD LANGUAGES

Click the edit button to request a course ➡

Please choose a course.

Number of requests to generate : 1

PE AND HEALTH GRADE 12

Click the edit button to request a course ➡



PE 11/12 and Health is a 12th grade requirement.

Number of requests to generate : 1

English Grade 12

English IV or AP English Literature is a 12th grade requirement.

<input checked="" type="checkbox"/>	Course Name ▲	Number	Course Description	Credits
<input type="checkbox"/>	AP English Literature & Composition	H14041		5
<input type="checkbox"/>	English (D)	H14514		5
<input type="checkbox"/>	English (PF)	H14513		5
<input type="checkbox"/>	English 4	H14540		5
<input type="checkbox"/>	English 4 ICRP	H14533		0
<input type="checkbox"/>	English IV	H14040		5
<input type="checkbox"/>	ESL Eng 10	H14923		0
<input type="checkbox"/>	ESL Eng 11	H14933		0
<input type="checkbox"/>	ESL Welcome Center	H91900		5
<input type="checkbox"/>	School to Work	H94516		5

<< first < prev 1 next > last

✓ You may select up to 1 course. You have selected 0 course(s).

WHY CHALLENGE YOURSELF??



- ❧ Prepping for college level courses
- ❧ Honors and AP help to boost your Weighted GPA
- ❧ Creating a more competitive Transcript
- ❧ Passing AP classes (and exams) may save you money if they can fulfill college class requirements (depending on the policies of your institution)
- ❧ Quality over quantity

ALTERNATES

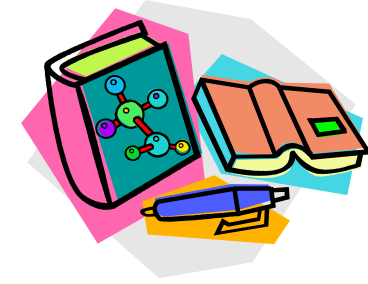
- It's really important that you choose alternates you would actually want to take.
- Please enter at least 3-5 back-ups
- As you know, sometimes the more popular courses fill up.

Grade 9 & 10

1. English I
2. Mathematics
3. Biology I
4. US History I
5. World Language
6. PE & Health 9
7. 21st Century/Arts/Fin. Lit.
8. Elective

1. English II
2. Mathematics
3. Chemistry
4. US History II
5. World Language/Elective
6. PE & Driver's Education
7. 21st Century/Arts/Fin. Lit
8. Elective

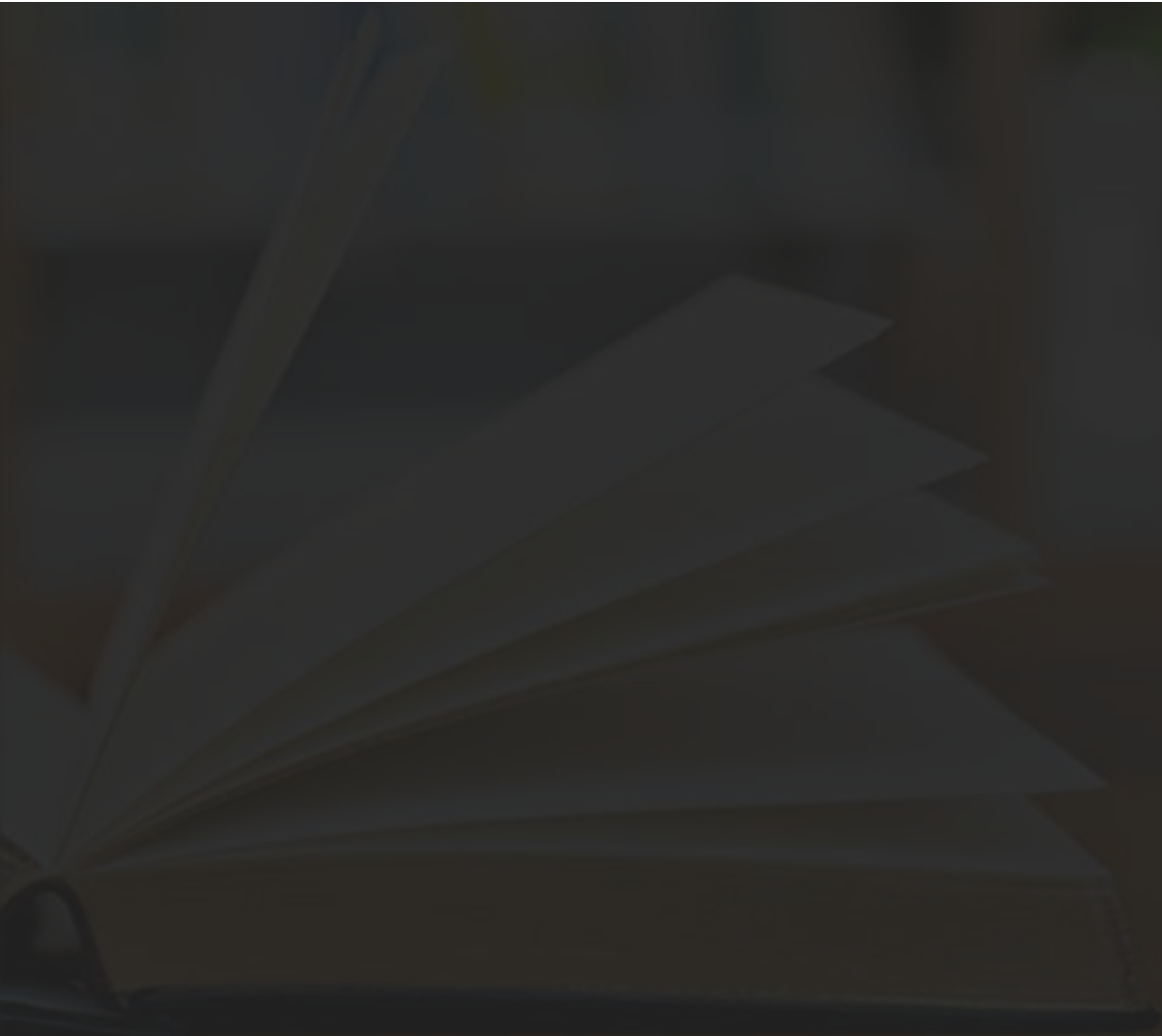
Grades 11 & 12



1. English III
2. Mathematics
3. Physics
4. World History & Cultures
5. PE & Health 11/12
6. 21st Century/Arts/Financial Lit.
7. World Language or Elective
8. Elective

1. English IV
2. PE & Health 12
3. _____
4. _____
5. _____
6. _____
7. _____
8. _____

COURSE OFFERINGS- ENGLISH LANGUAGE ARTS

- 
- English I, II, III, & IV
 - AP English Language & Composition
 - AP English Literature & Composition
 - English Plus
 - ESL English IV

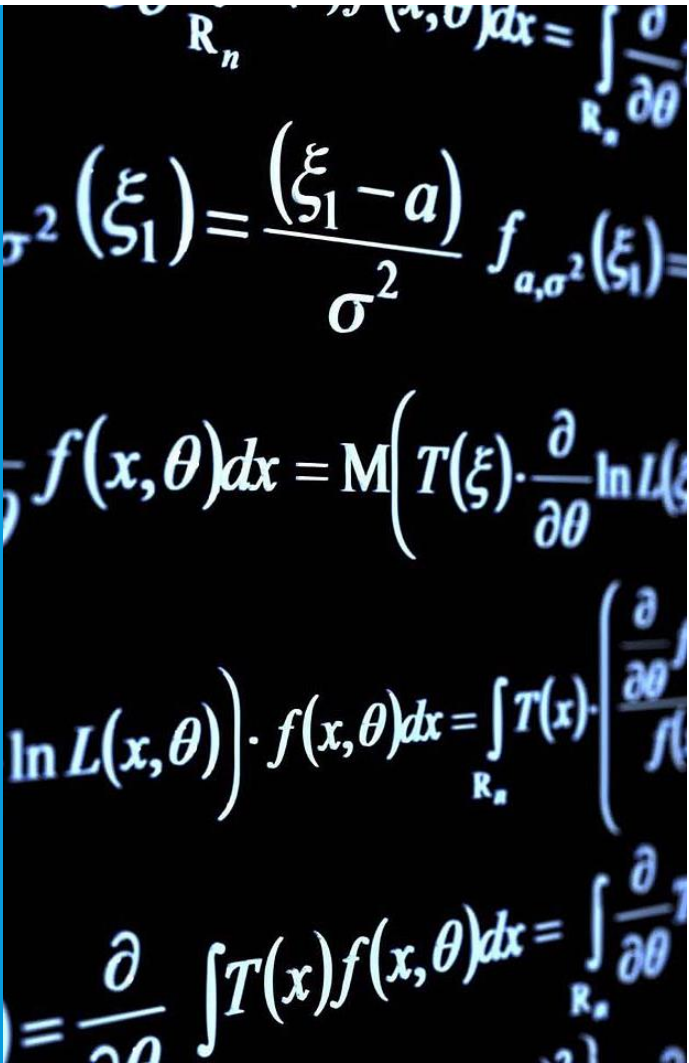
ENGLISH- ELECTIVE COURSES



- Creative Writing
- Filmmaking
- Journalism I/II
- Media Studies
- Multi-Media Special Effects
- Public Speaking
- Video Production I/II
- Contemporary Literature
- Film Appreciation
- Great Books
- Philosophy
- Game Design
- Literature and Social Justice

COURSE OFFERINGS & ELECTIVES - MATHEMATICS

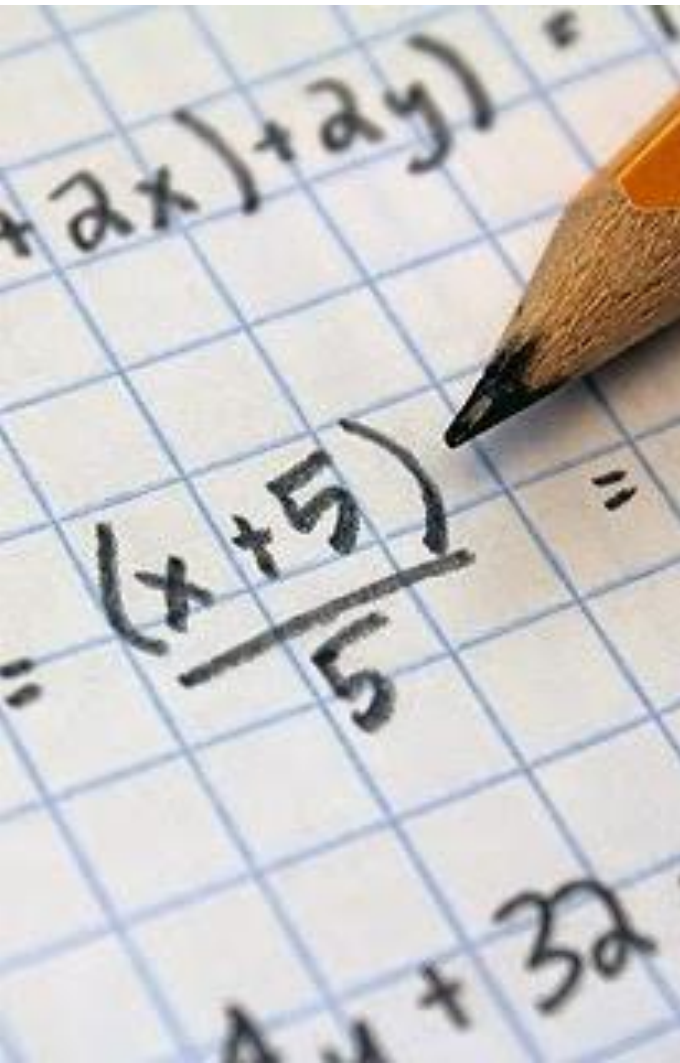
- Algebra I
- Geometry/Accel
- Algebra II/Elements/Accel
- Applications and Modeling of Math
- Pre-Calculus/Accel
- Intro to Stats*
- Discrete Mathematics*



The image displays a collage of mathematical formulas, primarily related to probability and statistics. The formulas are written in white on a dark background. The visible formulas include:

- The normal distribution probability density function: $f(x, \theta) = \frac{1}{\sigma \sqrt{2\pi}} e^{-\frac{(x-\mu)^2}{2\sigma^2}}$
- The Fisher information formula: $I(\theta) = -E\left[\frac{\partial^2 \ln L(\theta)}{\partial \theta^2}\right]$
- The score function formula: $S(\theta) = \frac{\partial \ln L(\theta)}{\partial \theta}$

COURSE OFFERINGS & ELECTIVES – MATHEMATICS



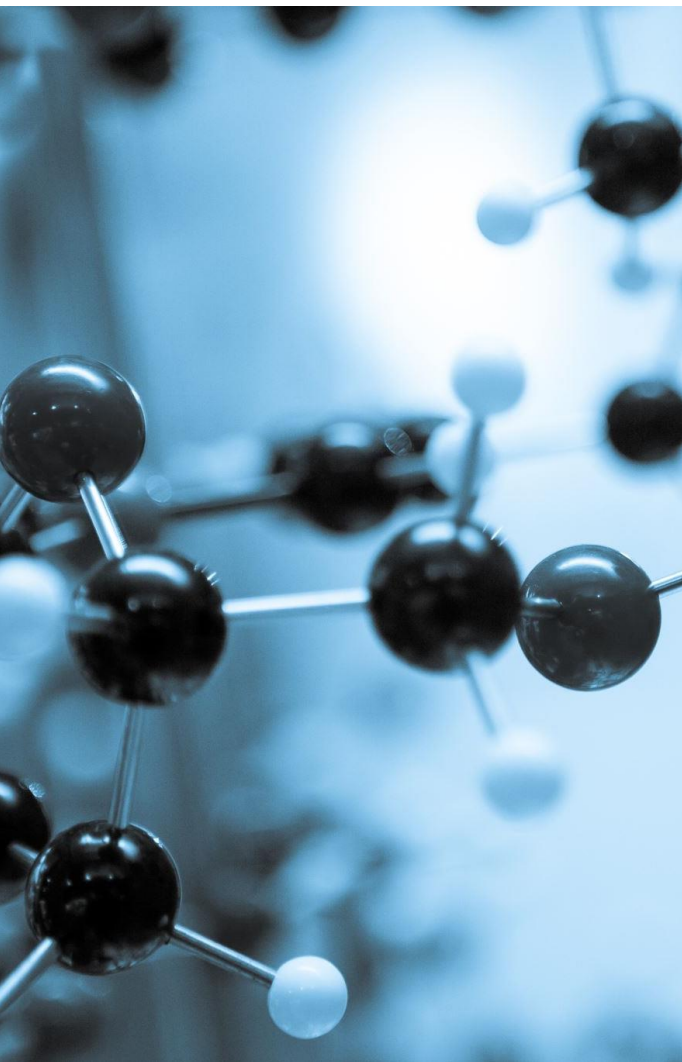
- AP Statistics
- Intro to Statistics/Discrete Math
- Calculus
- AP Calculus AB/BC
- Multivariable Calculus

BUSINESS/COMPUTER SCIENCE ELECTIVES

- Personal Finance, Entrepreneurship, Economics, Business Ethics
- AP Macroeconomics / AP Microeconomics
- Contemporary Economic Issues
- Accounting
- Coding courses
- Cybersecurity
- App Development



COURSE OFFERINGS & ELECTIVES-SCIENCE



- Biology /AP
- Chemistry /AP
- Organic Chemistry
- Physics, AP 1 & C
- Anatomy & Physiology
- Forensics
- Environmental Science, AP
- Engineering/Exercise Science
- Genetics
- Anatomy & Physiology
- Planetary Science Accelerated
- Research (if already in program)
- Innovation Engineering Physics

SOCIAL STUDIES COURSE OFFERINGS

- US History I
- US History II/AP
- World History/AP





SOCIAL STUDIES - ELECTIVES

- Racial Literacy and Justice
- Contemporary Crisis & Current Events
- Latin America
- Middle East
- Africa
- Russia
- World Religion
- Human Behavior
- Accelerated Sociology
- AP European History
- AP Government & Politics

CLASSICAL AND WORLD LANGUAGES

- ❖ French II-VI/AP/Advanced
- ❖ Spanish I-VI/AP/Advanced
- ❖ Latin I-IV
- ❖ Japanese I-IV/AP
- ❖ Mandarin I-IV/AP
- ❖ Italian I-IV/AP
- ❖ Latin Studies: Mythology
- ❖ East Asian Studies



COURSE OFFERINGS & ELECTIVES

PHYSICAL EDUCATION

- Teen Prevention Education Program (PEP) - *application required*
- Physical Education
- Health I, III, IV
- Driver's Education (10th Grade)

ELECTIVES – PERFORMING ARTS

- ◆ Choir
- ◆ Orchestra
- ◆ Band
- ◆ AP Music Theory- audition required
- ◆ Studio Art I-IV
- ◆ Art of Craft
- ◆ AP Art History
- ◆ Drama, Drama II, Drama Seminar, Musical Theatre
- ◆ Dance





◆ Studio Art I

◆ Studio Art II & III (2D)

◆ Studio Art II & III (3D)

◆ Studio Art IV

◆ The Art of Craft

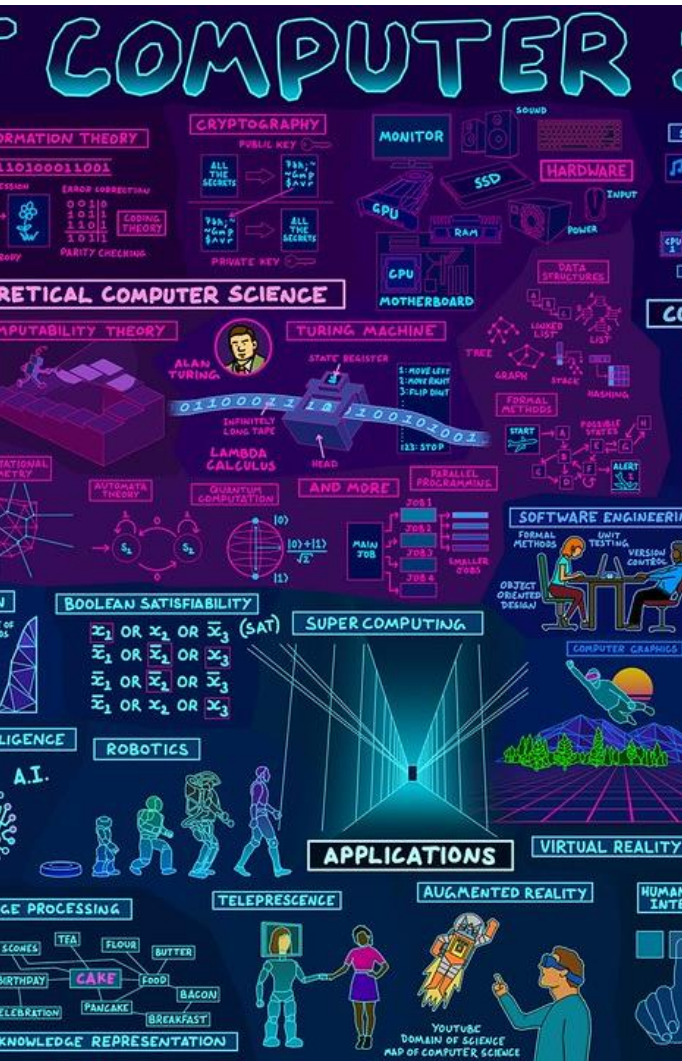
◆ AP Art History



ELECTIVES – VISUAL ARTS

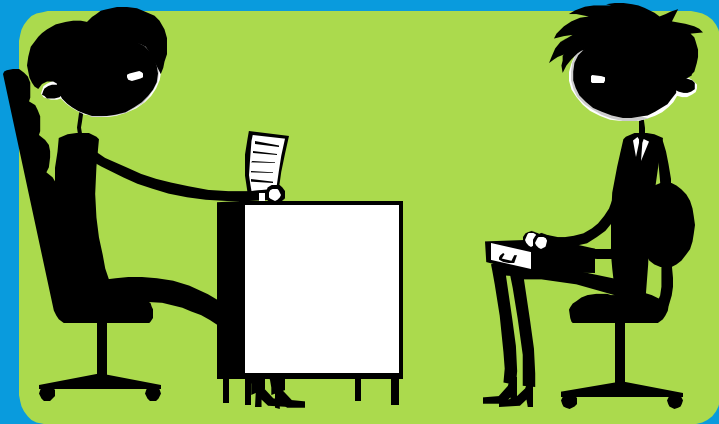


COURSE OFFERINGS - COMPUTER SCIENCE



- Python Programming
- Intro to Java* / Object Java*
- AP Computer Science
- Computer Science Principles
- App Development
- Algorithms & Data Structures

Program Planning/ Recommendations



Review

prerequisites



Talk

to your teachers & parents



Review

recommendations



Make

requests online



Prepare

for your scheduling appointment!

WHY YOU SHOULD TAKE PLANNING YOUR SCHEDULE SERIOUSLY...



Changing your schedule once you receive it has limits

If you want to make a change, after school starts, we have to get approval from your parent/guardian, teacher and supervisor of the subject

If you drop past the drop deadline (9/23/22 for semester courses, 9/30/22 for full year) the change will be reflected as a WITHDRAWAL -- WF if Failing, WP if Passing at time of drop.

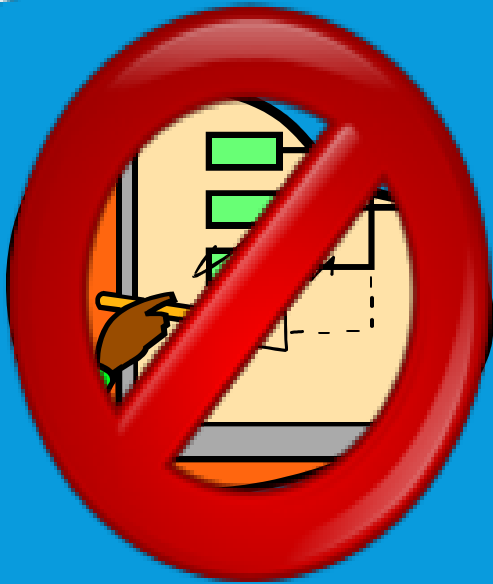
SCHEDULING REVISIONS

July 15, 2022 = last day to make changes

Once schedules are released

- Email counselor to make an appointment
- Contact Counseling Services for:
 - Correction of an incomplete or incorrect schedule
 - Fulfilling district and/or state of New Jersey graduation requirements
 - Alteration of a schedule due to failure of a course
 - Alteration of a schedule as a result of summerschool

Scheduling Revisions



Schedule changes will **NOT** be made for the following reasons:

- Class during the AM/PM session
- Course selection based on a “trial period”
- Course choice based on a “preferred teacher”



SUMMER CONSIDERATIONS

Finish up your
Community Service!

Remember that summer projects need to be approved by Dr. Dinan first.

Hours cannot count towards the requirement prior to the start of 10th grade (September)

Financial Literacy requirement can be completed online through Educere.

PHS summer workshops (if offered)

WHAT IS NAVIANCE?

WHY DO I WANT TO USE IT?

- College & Career Readiness tool
- Support in discovering your strengths and interests as you plan for college and careers
- Log into Naviance via the PPS Link



9TH GRADE LEARNING AND PRODUCTIVITY ASSESSMENT

- Learn your sensory and mindset preferences to help you develop strong study practices
- 20 minutes
- No right or wrong answers
- In Naviance
 - Self-Discovery---> Learning and Productivity



10TH GRADE CAREER INTEREST PROFILER

- Capture your interests to help identify your personality traits and suggested careers
- 15 minutes
- 60 questions
- In Naviance
 - Self-Discovery---> Career Interest Profiler



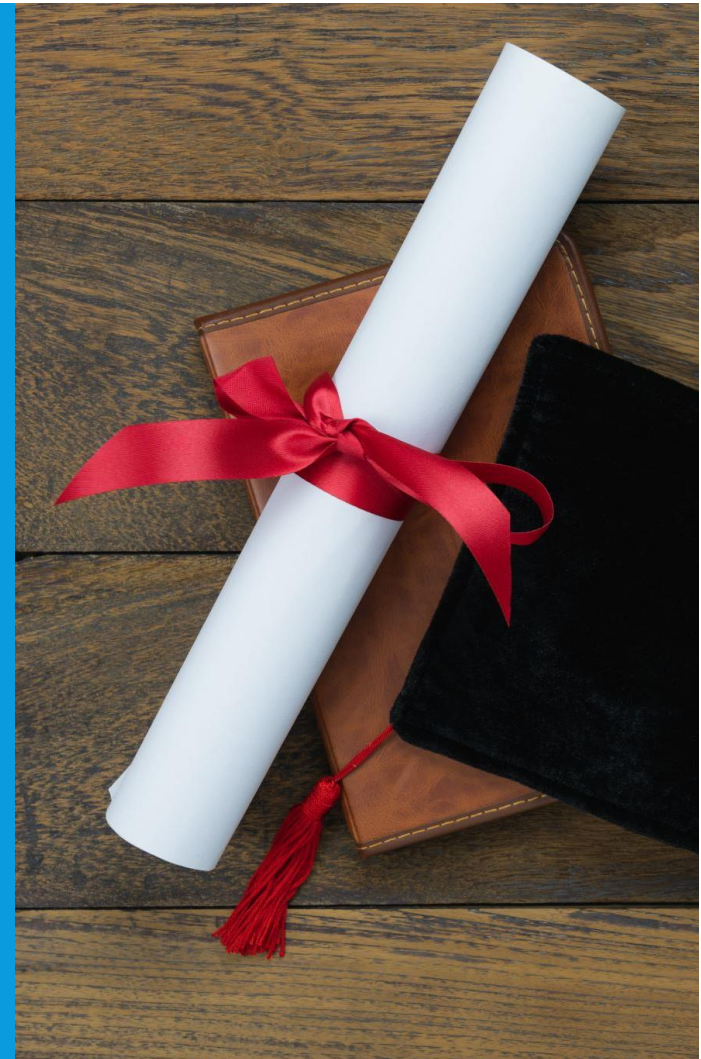
WANT TO EXPLORE MORE...



- In Naviance:
 - Careers-->Explore Careers
 - Careers-->Explore Clusters and Pathways
 - Careers-->Explore Roadtrip Nation Videos

Graduation Requirement Summary: True/False Quiz

- A total of 120 credits are required to graduate from PHS?
- Students must take two years of US History and one of World History?
- Statistics is one of the three math classes you must pass?
- Four years of PE and health are required?



Graduation Requirements True/False Quiz

- Passing the NJGPA is all you need to meet state graduation requirements?
- A minimum of two years of a world language is required?
- Students must pass four years of English?
- Courses taken in middle school count towards graduation?





Questions???

