

# Parent Orientation for Kindergarteners

## 2022-2023

### January 26, 6:00 pm



- Welcome to Newcastle Elementary      Dr. Tod Wood, Principal
- Family Liaison      Ina Ghandgurde
- Newcastle PTSA      Mary Vickers
- Registration Materials\Timeline      Pam Stucky, Registrar
- Immunizations\Health Forms      Pam Gibson, Nurse
- Q & A

# Cultural and Family Partnerships



The Issaquah School District supports students' success by supporting families. To eliminate barriers and provide full access to all the educational opportunities in our district, we provide families supports such as Parent Workshops, access to Family Liaisons and resources to help staff better support our students and families.

# Family Liaisons

Family Liaisons can help you navigate the Issaquah schools so you can better support your child. For example, we can provide more information about school programs, assist with registration and enrollment verification, and help you connect with your child's teacher(s), counselor, or other staff.

Si tiene alguna pregunta, por favor envíe un correo electrónico a [medinal@issaquah.wednet.edu](mailto:medinal@issaquah.wednet.edu), o mande un texto o llame al 425-331-9555

**Liliana Medina (Español)**  
Family Partnership Liaison  
425-837-7141  
[MedinalL@issaquah.wednet.edu](mailto:MedinalL@issaquah.wednet.edu)

**Serving:**  
Issaquah High School  
Issaquah Middle School  
Pacific Cascade Middle School  
Clark Elementary  
Issaquah Valley Elementary  
Sunset Elementary

需要協助與老師或職員溝通嗎？請發送電子郵件至 [mithalw@issaquah.wednet.edu](mailto:mithalw@issaquah.wednet.edu) 獲取協助並回答問題或填寫表格。此外，學校的教職員也可以與您聯繫提供協助。

**Wenli Mithal (中文)**  
Family Partnership Liaison  
425-837-7106  
[MithalW@issaquah.wednet.edu](mailto:MithalW@issaquah.wednet.edu)

**Serving:**  
Skyline High School  
Beaver Lake Middle School  
Pine Lake Middle School  
Cascade Ridge Elementary  
Cedar Trails Elementary  
Challenger Elementary  
Creekside Elementary  
Discovery Elementary  
Endeavour Elementary  
Sunny Hills Elementary

Need help communicating with teachers or staff? Please email [ghangurdei@issaquah.wednet.edu](mailto:ghangurdei@issaquah.wednet.edu) to get help answering questions or filling out forms. Also, someone from the school can contact you with help or answers.

**Ina Ghangurde (Marathi, Hindi)**  
Family Partnership Liaison  
425-837-7008 (phone)  
252-563-4398 (text)  
[Ghangurdel@issaquah.wednet.edu](mailto:Ghangurdel@issaquah.wednet.edu)

**Serving:**  
Liberty High School  
Cougar Mountain Middle School  
Maywood Middle School  
Apollo Elementary  
Briarwood Elementary  
Cougar Ridge Elementary  
Grand Ridge Elementary  
Maple Hills Elementary  
Newcastle Elementary



## Ina Ghangurde

[ghangurdei@issaquah.wednet.edu](mailto:ghangurdei@issaquah.wednet.edu)

(425) 837-7008 (phone)

(252) 563-3498 (text)

*English, Marathi, Hindi*

*At Newcastle on Thursday morning but available any time*

### **The Family Liaison role:**

- Introduce, facilitate access and aid in navigation of appropriate school and District resources available to students and their families
- Work with registrar, school counselor, nurse and admin to connect and support families.
- Initiate and maintain verbal and written communication as appropriate with families, particularly our culturally and linguistically diverse families and traditionally marginalized groups.
- Support school in planning Family Partnership Events



# ♥ Welcome to Kindergarten



Cultural Bridges  
Issaquah Schools Foundation

**When:** Wednesday, March 16, 2022 from 6:30 to 8 pm

**Where:** Zoom—Presentations in English, Español and 中文 [Register for the event](#)

**Who:** All parents and caregivers of incoming kindergarten students 2022-2023.

**What:** Information will include:

- Kindergarten preparedness
- general school day schedule (lunch and recess)
- classroom general information
- transportation
- immunization
- on-site before and after school care program
- differences between school systems in US vs some other countries



## The event is designed for families **new to US public schools.**

If you need interpretation in another language (한국어, 日本語, русский or Tiếng Việt) or have any questions, please contact Ina Ghangurde [ghangurdei@issaquah.wednet.edu](mailto:ghangurdei@issaquah.wednet.edu) by Friday, March 11, 2021.

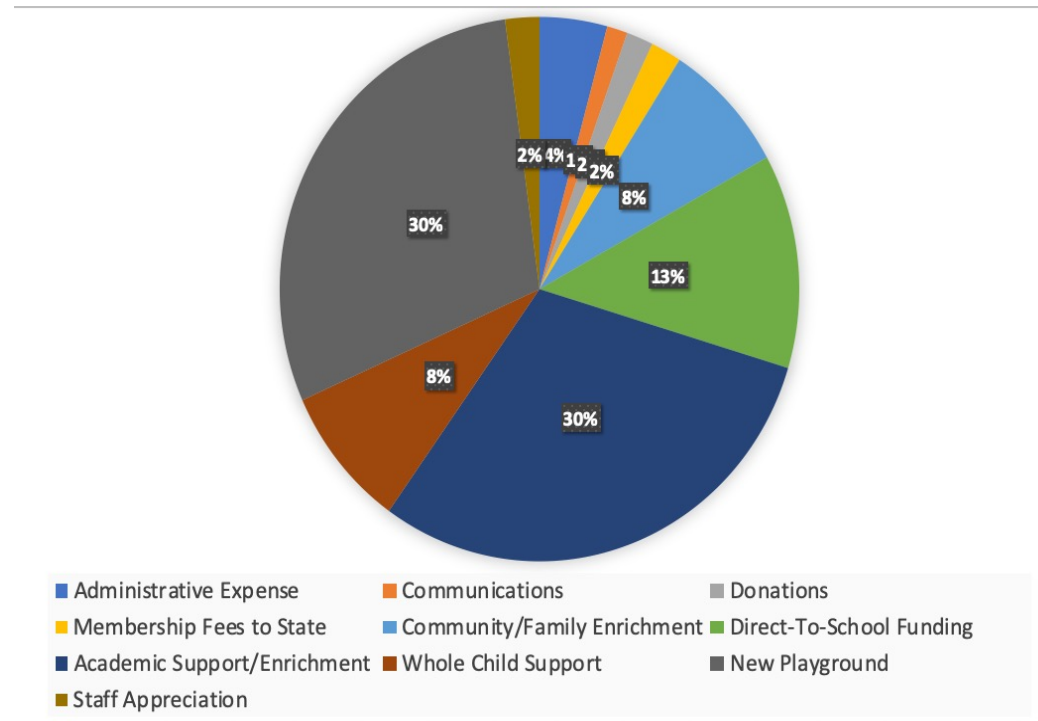


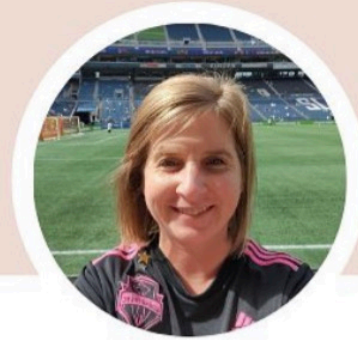
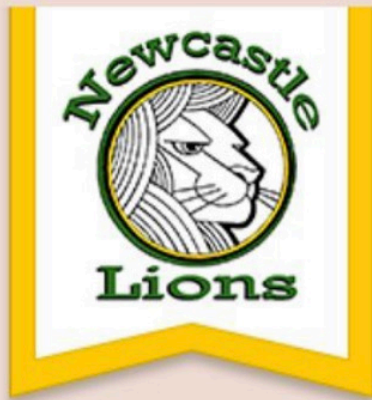
## What is a PTSA?

Parent  
Teacher  
Student  
Association

The Newcastle Elementary PTSA is a non-profit organization which supports the children and families of Newcastle Elementary School. In partnership with families, the community, teachers, and staff, we provide the funding, programs, and volunteers to *enrich the educational experience for every child.*

## What does our PTSA fund?





## Testimonial

I'm grateful for Newcastle PTSA. The past years of been challenging and our PTSA has been there support teachers. I'm thankful for the creative ways they support our students. My students were sad that there wasn't a Harvest Festival this year, but the PTSA provided activities for us to do in the classroom. My classroom was filled with smiles and laughs as we created spiders and played bingo. I'm also thankful for the endless supplies of treats and snacks. There is ALWAYS a Diet Coke when I need a pick me up!!



Mrs. Posten,  
3rd Grade





**Teacher Grants**



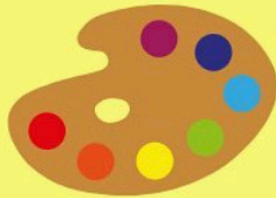
**LionArt**



**Playground  
Equipment**



**Kinder Connect**



**Reflections**



**Science  
Enrichment  
Activities**



**Staff  
Appreciation**



**Book Fair**



**Spirit Wear**



**Yearbook**



**Angel Program**



**Fall Event**

**BE A PART OF OUR PTSA!**





## Qualifications for Kindergarten Registration

- Your child must be 5 by August 31, 2022.
- Live in Newcastle Attendance Area.
- Complete the online registration process.
- Provide required documents as requested following registration.



## Documents Required to Complete Online Registration

- Birth Certificate or Passport
- Record of Immunizations
- Purchase or Lease Agreement
- Utility Bill
- Parent/Guardian Picture ID



## Your Next Steps...

Once your online application is approved, Pam will contact you with a timeline to pick up your *Kindergarten Information Packet*.

This packet includes additional materials that are required and will need to be completed and returned to the office.

# Kindergarten Timeline 2022

## February

### Feb 1: Kindergarten Registration Opens

- All incoming 2022 Kindergarten student needs to complete the [ISD New Student Enrollment](#) website

### March 4: Kindergarten Registration due

#### Kindergarten screener for your child in March or April

- Your school will contact you
- You go with your child to the screener
- The screener is reading and math (letters, sounds, numbers, counting and a few words)

## March

Online Registration is  
required  
(ends March 4)

### March 16: Informational Event - Kindergarten families new to US public school system

- Information shared: Differences between US and other countries school systems / General classroom / Transportation / Lunch / On-site before and after school care programs
- Each elementary school will host a specific event to welcome kindergarten families.
- Presented by ISD Family Partnership staff in English, Spanish, and Chinese. [Register for the event](#)

# July

Pre-K Summer school is  
by invitation

## July 5 – July 30: Pre-K Summer School *(by invitation only)*

- Focus on reading skills and introduction to school
- Free transportation
- Prepares students for Kindergarten

# August

## August 9, 10 and 11: “Come, ride along” on the Yellow School Bus - Optional 9:30 am – 10:30 am

- Visit the ISD Kindergarten Transportation webpage to register

**Route Information:** New students registered in the ISD by August 1<sup>st</sup> will be able get route information by the end of August. Go to the ISD Transportation website for route information

## Online Enrollment Verification - Aug ‘22

- All Families with children registered in the ISD will need to complete this process via Skyward. Details to follow in E-News.

## “Tools4Schools” – Optional

An ISF event in August 2022, provides free backpacks and school supplies for families who need financial assistance. Use this link for information and to register:

<https://issaquahfoodbank.org/tools4school>

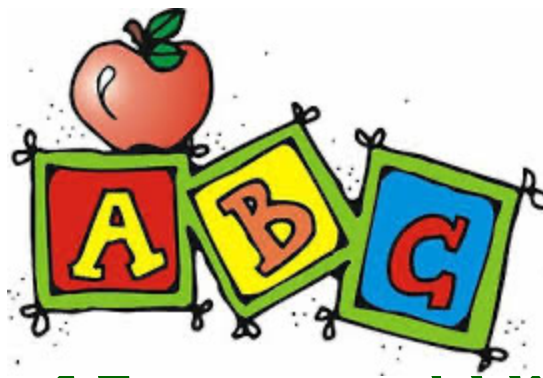
## August 30 – First Day of School for grades 1-12

## September 2 – First Day of School for Kindergarteners\*

**\*August 30, 31 and Sept 1 – Kindergarten families are invited to a family connection meeting with your child’s Kindergarten teacher during the first three school calendar days. This meeting is required.**

# September

Family Connection  
Meeting (Required)



## Timeline of Events and Highlights

- March 4      Deadline to complete online registration and provide additional documents
- May            Kindergarten Open House Evening (Zoom)
- April/May    Pre-Kinder Assessment Appointments
- August  
9, 10, & 11    Kindergarten Bus Ride-Along (see packet)

**Any Questions? Please contact Pam Stucky at 425.837.5802 or email her at [stuckyp@issaquah.wednet.edu](mailto:stuckyp@issaquah.wednet.edu)**



# 2022 Kindergarten Ride Along – Invitation to Ride the Bus

**When: August 9, 10 & 11**

The ISD Transportation department invites you take a free school bus ride before school starts in September!

*Look for more details included in your packet.*



## HEALTH CONDITIONS QUESTIONNAIRE

- If your child has any health condition that could be considered life-threatening such as asthma, food allergies, seizures, diabetes.....
- According to the law, your child must have an emergency health plan, which includes medication orders from your child's health care provider in place before he/she can attend school.
- Forms will be sent to family after review of questionnaire by Nurse.





## Minimum Vaccines Required for Kindergarten School Attendance

- All boosters required for kindergarten can be given on or after the 4<sup>th</sup> birthday.
- Records are reviewed on an individual basis as needed.
- Physician verification of a history of varicella disease, or blood test (titer) showing immunity to varicella is acceptable (Chickenpox)
- If exemption from immunizations is desired, a meeting with the nurse is required.
- ***ALL STUDENTS MUST BE COMPLIANT TO START KINDERGARTEN.***

# CERTIFICATE OF EXEMPTION (COE)

- If parents and guardians choose to exempt their child from one or more of the required vaccines, they must fill out a Certificate of Exemption form.
- A licensed health care provider must sign the Certificate of Exemption for a parent or guardian to exempt their child from school immunization requirements.
- The signature verifies that the provider gave the parent or guardian information about the benefits and risks of immunization.
- There is no exemption for the MMR immunization.



Questions?