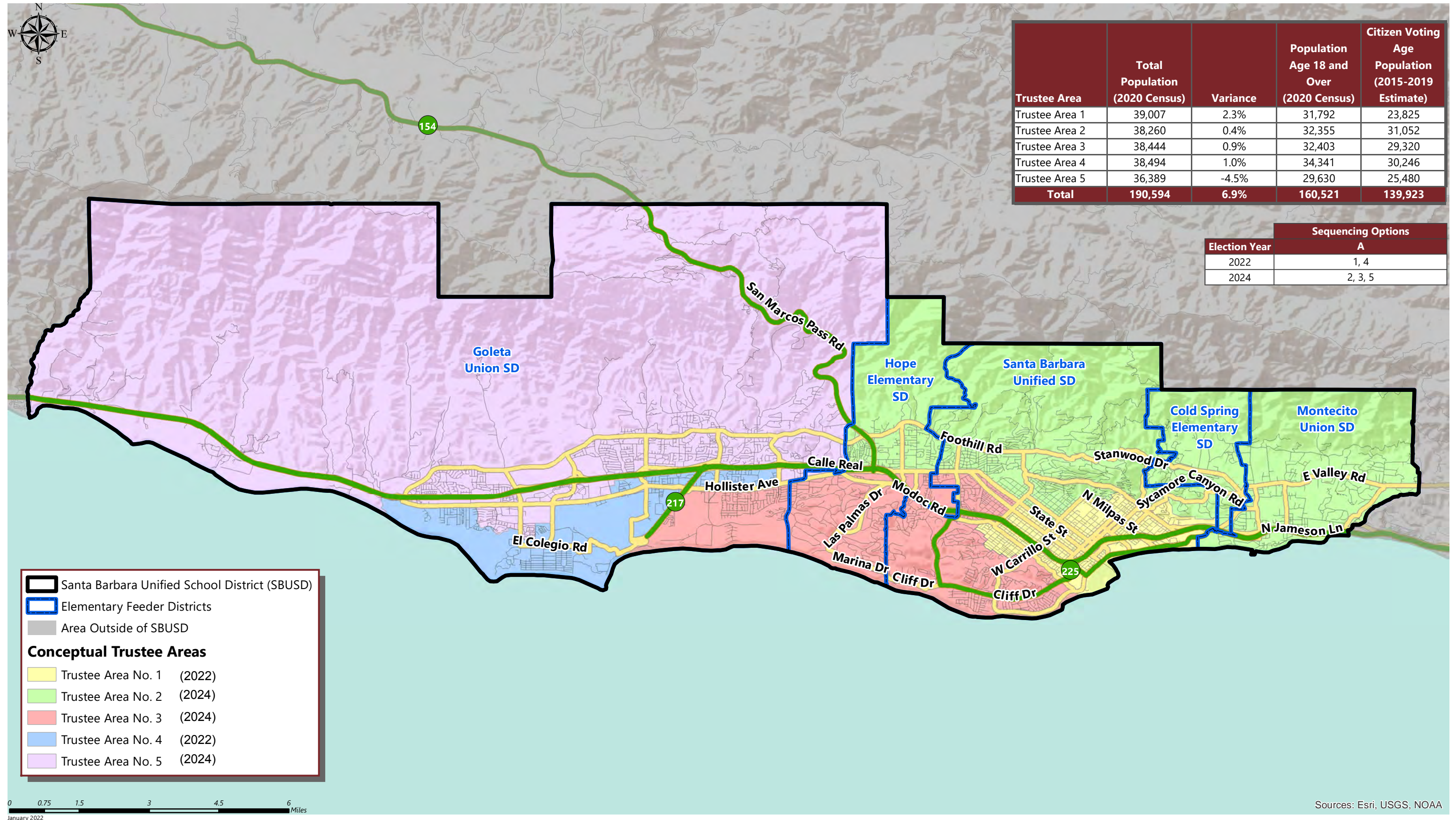


SANTA BARBARA UNIFIED SCHOOL DISTRICT

CONCEPTUAL TRUSTEE AREAS - SCENARIO A MAP



Trustee Area	Total Population (2020 Census)	Variance	Population Age 18 and Over (2020 Census)	Citizen Voting Age Population (2015-2019 Estimate)
Trustee Area 1	39,007	2.3%	31,792	23,825
Trustee Area 2	38,260	0.4%	32,355	31,052
Trustee Area 3	38,444	0.9%	32,403	29,320
Trustee Area 4	38,494	1.0%	34,341	30,246
Trustee Area 5	36,389	-4.5%	29,630	25,480
Total	190,594	6.9%	160,521	139,923

Election Year	Sequencing Options
	A
2022	1, 4
2024	2, 3, 5

Santa Barbara Unified School District (SBUSD)
 Elementary Feeder Districts
 Area Outside of SBUSD

Conceptual Trustee Areas

- Trustee Area No. 1 (2022)
- Trustee Area No. 2 (2024)
- Trustee Area No. 3 (2024)
- Trustee Area No. 4 (2022)
- Trustee Area No. 5 (2024)

0 0.75 1.5 3 4.5 6 Miles
January 2022

Sources: Esri, USGS, NOAA

SANTA BARBARA UNIFIED SCHOOL DISTRICT

CONCEPTUAL TRUSTEE AREAS - SCENARIO A MAP

Total Population:	190,594	Ideal Population:	38,119	Variance:	6.9%
--------------------------	----------------	--------------------------	---------------	------------------	-------------

Total Population (2020 Census)					
	Trustee Area 1	Trustee Area 2	Trustee Area 3	Trustee Area 4	Trustee Area 5
Population	39,007	38,260	38,444	38,494	36,389
Population Variance	888	141	325	375	-1,730
	2.3%	0.4%	0.9%	1.0%	-4.5%
Hispanic/Latino	57.8%	18.5%	26.5%	32.7%	24.8%
White	34.2%	71.4%	62.2%	38.7%	58.4%
Black/ African American	1.4%	0.8%	1.1%	1.7%	1.1%
American Indian/ Alaska Native	0.3%	0.3%	0.3%	0.1%	0.2%
Asian	2.6%	3.5%	4.6%	21.1%	10.2%
Native Hawaiian/ Other Pacific Islander	0.0%	0.2%	0.1%	0.1%	0.1%
Other	0.6%	0.6%	0.7%	0.8%	0.5%
Two or More Races	3.0%	4.7%	4.4%	4.8%	4.7%

Population 18 and Over (2020 Census)					
	Trustee Area 1	Trustee Area 2	Trustee Area 3	Trustee Area 4	Trustee Area 5
Population	31,792	32,355	32,403	34,341	29,630
Hispanic/Latino	52.7%	16.6%	24.1%	29.8%	22.5%
White	38.8%	74.0%	65.1%	40.0%	60.9%
Black/ African American	1.6%	0.9%	1.2%	1.7%	1.1%
American Indian/ Alaska Native	0.3%	0.3%	0.3%	0.1%	0.2%
Asian	3.0%	3.8%	5.0%	22.8%	10.9%
Native Hawaiian/ Other Pacific Islander	0.0%	0.1%	0.1%	0.0%	0.0%
Other	0.6%	0.6%	0.7%	0.8%	0.4%
Two or More Races	2.9%	3.8%	3.5%	4.7%	3.9%

Citizens by Voting Age Population Estimate (2015-2019)					
	Trustee Area 1	Trustee Area 2	Trustee Area 3	Trustee Area 4	Trustee Area 5
Population	23,825	31,052	29,320	30,246	25,480
Hispanic/Latino	37.9%	11.8%	21.2%	25.1%	18.1%
White	53.0%	81.9%	72.3%	53.3%	72.3%
Black/ African American	3.5%	1.1%	1.1%	3.9%	2.2%
American Indian/ Alaska Native	0.2%	0.2%	0.6%	0.0%	0.1%
Asian	2.8%	3.8%	3.7%	13.6%	5.9%
Native Hawaiian/ Other Pacific Islander	0.0%	0.0%	0.1%	0.0%	0.0%
Other	0.0%	0.0%	0.0%	0.0%	0.0%
Two or More Races	2.6%	1.1%	1.0%	4.1%	1.3%